

Population 10,200. Prevailing Winds, S.W.

WATER FACILITIES

Gravity and direct pressure system of water works, installed in 1901. Water supply from Stoner Creek. Water pumped to stand pipe capacity, 256,000 galls., elevated 35 ft. above business section and directly into mains by two beane compound duplex pumps, capacity 60 million galls., each per 24 hours.

FIRE DEPARTMENT

Three fully paid men. Fire party paid men. Fire men sleep at engine house. Two horses, swinging harness. One 5-horse steam fire engine. One hose wagon with 1000 ft. 2 1/2 hose. One combination hose and chemical wagon with 50 gall. tank and 700 ft. 2 1/2 hose. 122 ft. of ladders. Gamewell fire alarm system. 21 boxes combination gong and indicator.

Grades about uniform. Streets Macadamized. Public lights electric and gas.

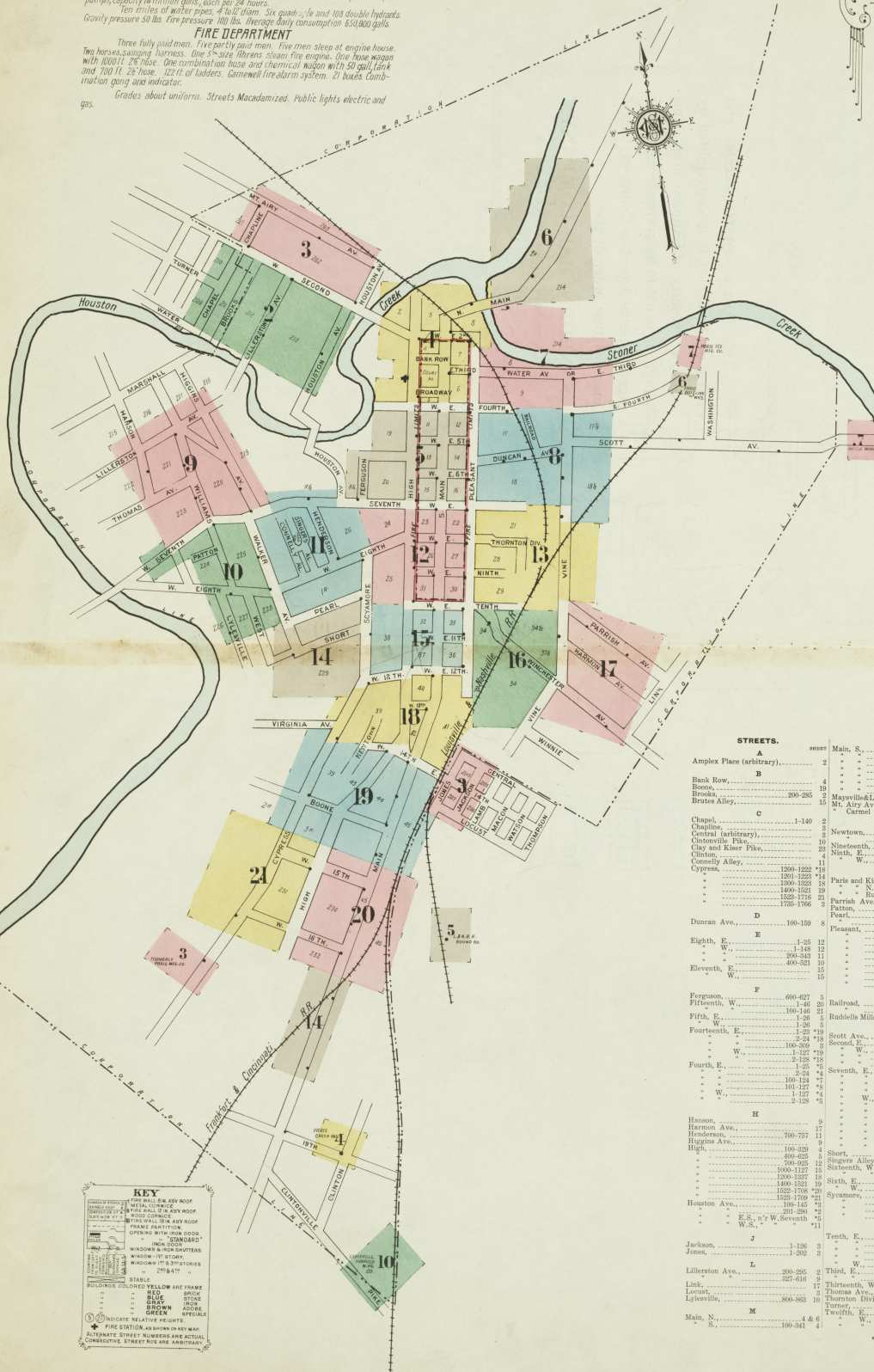
Insurance Maps of PARIS

BOURBON KENTUCKY COUNTY

SANBORN MAP COMPANY 11 BROADWAY New York

SCALE 50 FT TO AN INCH May 1912

Copyright 1912, by the Sanborn Map Company



INDEX.

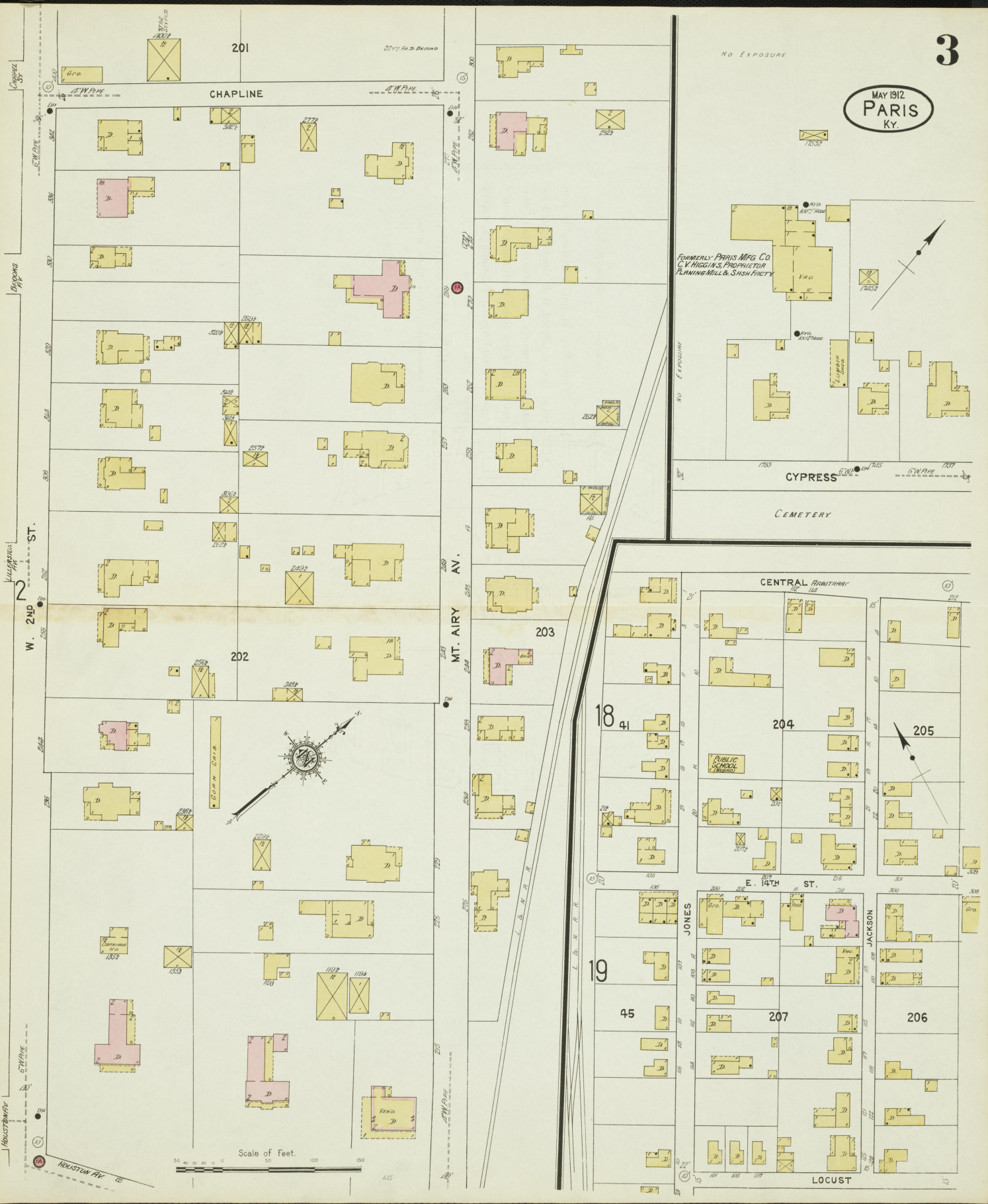
Table with columns for STREET, BLOCK, and various street names. It lists streets from A to Z and includes a 'SPECIALS' section. The table is organized into columns for different street directions and block numbers.

KEY section containing symbols and legends for various features: STABLE, BUILDING COLORED YELLOW AND PINK, RED BRICK, BLUE STONE, BROWN BRICK, GREEN SPIDERS, WINDOWS AND DOOR SHUTTERS, WINDING UP STAIRS, WINDOWS 17' & 37' STORIES, 25' & 45'.

\* Indicates only one side of Street shown.



MAY 1912  
PARIS  
Ky.



Scale of Feet.  
0 20 40 60 80 100 120 140 150

NO EXPOSURE  
FORMERLY PARIS MFG. CO.  
C.V. HIGGINS, PROPRIETOR  
PLANING MILL & SASH FACTORY  
NO EXPOSURE  
CYPRESS  
CEMETERY

CENTRAL ARBITRARY

E. 14TH ST.

LOCUST

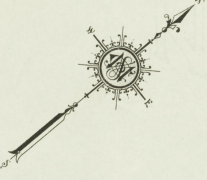
W. 2ND ST.

CHAPLINE

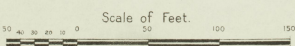
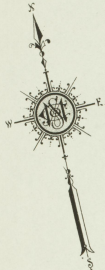
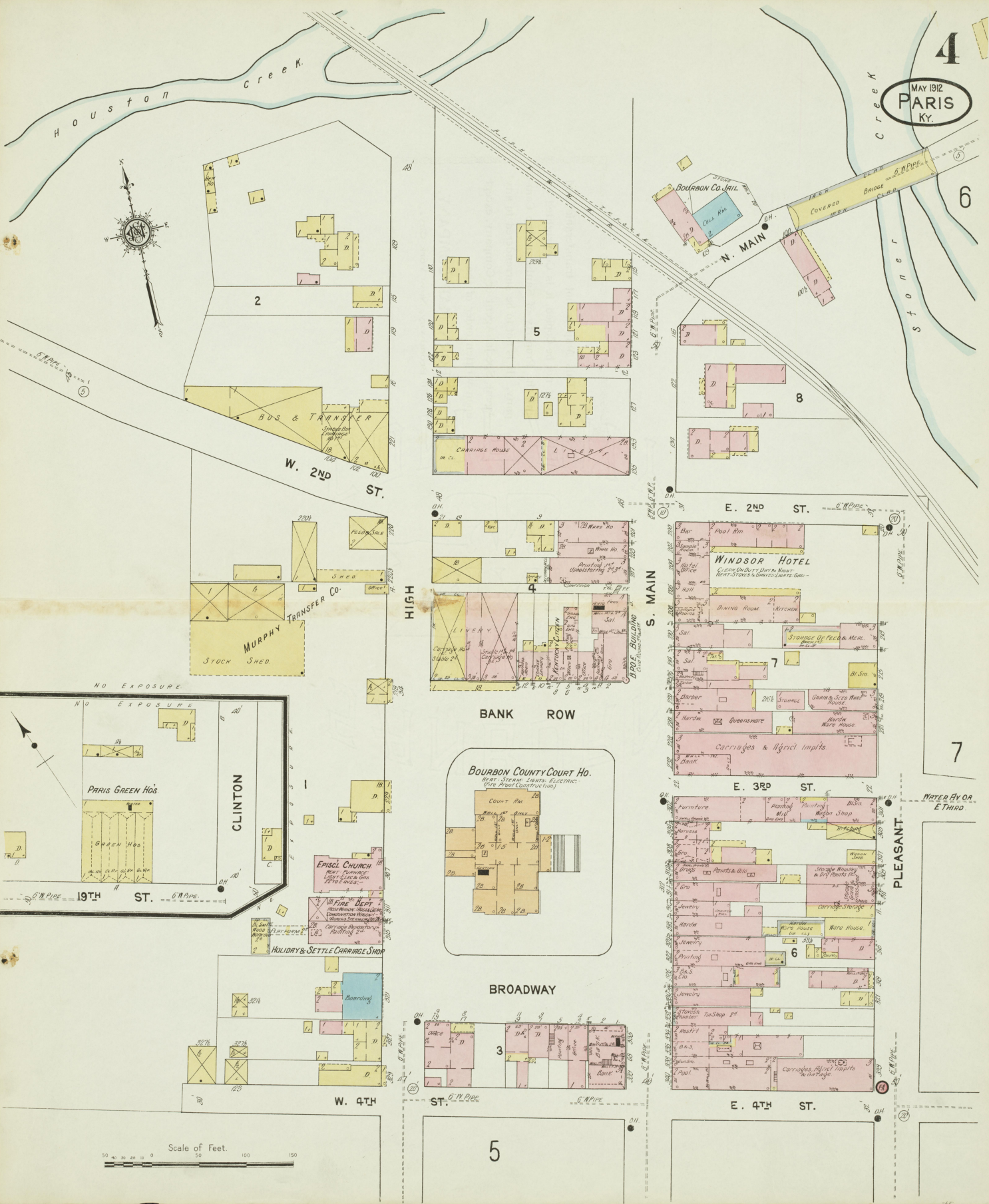
MT. AIRY AV.

JONES

JACKSON



MAY 1912  
PARIS  
KY.



4

6

7

5

2

5

8

4

E. 2ND ST.

S. MAIN

WINDSOR HOTEL

BANK ROW

BOURBON COUNTY COURT HO.

E. 3RD ST.

BROADWAY

PLEASANT

FURNITURE

PAINTS & OILS

DRUGS

JEWELRY

PRINTING

WINE HOUSE

WINE HOUSE

WINE HOUSE

WINE HOUSE

WINE HOUSE

WINE HOUSE

WINE HOUSE

WINE HOUSE

WINE HOUSE

NO EXPOSURE

NO EXPOSURE

19TH ST.

ST.

W. 2ND ST.

W. 4TH ST.

ST.

E. 4TH ST.

WATER AV OR E THIRD

CLINTON

MURPHY TRANSFER CO.  
STOCK SHED

PARIS GREEN HO'S

EPISCOPAL CHURCH

FIRE DEPT.

HOLIDAY & SETTLE CARRIAGE SHOP

COUNT RM.

CLERK'S OFFICE

RECORDS

OFFICE

OFFICE

OFFICE

OFFICE

OFFICE

OFFICE

OFFICE

OFFICE

OFFICE

OFFICE

OFFICE

BOYS & TRANSFER

CHAIRMAN'S HOUSE

BOURBON CO. HALL

CHIEF OF POLICE

N. MAIN

COVERED BRIDGE

STONER CREEK

STONER CREEK

STONER CREEK

STONER CREEK

STONER CREEK

STONER CREEK

STONER CREEK

STONER CREEK

STONER CREEK

STONER CREEK

STONER CREEK

STONER CREEK

STONER CREEK

STONER CREEK

STONER CREEK

STONER CREEK

STONER CREEK

STONER CREEK

STONER CREEK

STONER CREEK

STONER CREEK

STONER CREEK

STONER CREEK

STONER CREEK

STONER CREEK

STONER CREEK

STONER CREEK

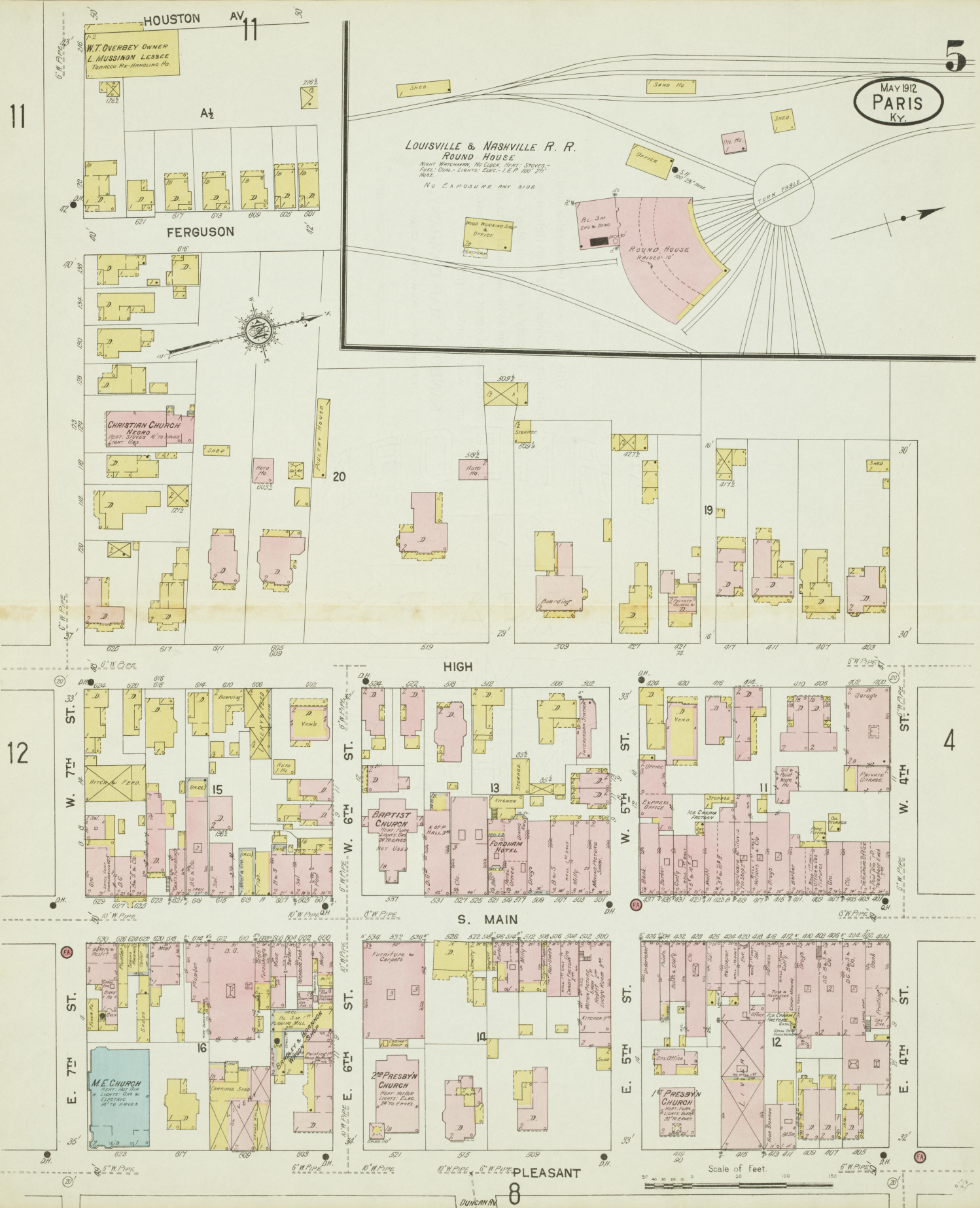
STONER CREEK

STONER CREEK

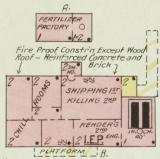
STONER CREEK

STONER CREEK

MAY 1912  
PARIS  
Ky.



Located 2 1/2 Miles S.W. of Court Ho.  
NO EXPOSURE ANY SIDE

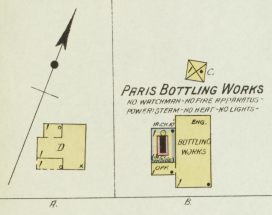


**BOURBON PACKING CO.**

NO WATCHMAN - NO FIRE APP.  
HEAT - STEAM - FUEL - CHAL.  
LIGHTS - ELECTRIC - 110 V.

MAY 1912  
**PARIS**  
KY.

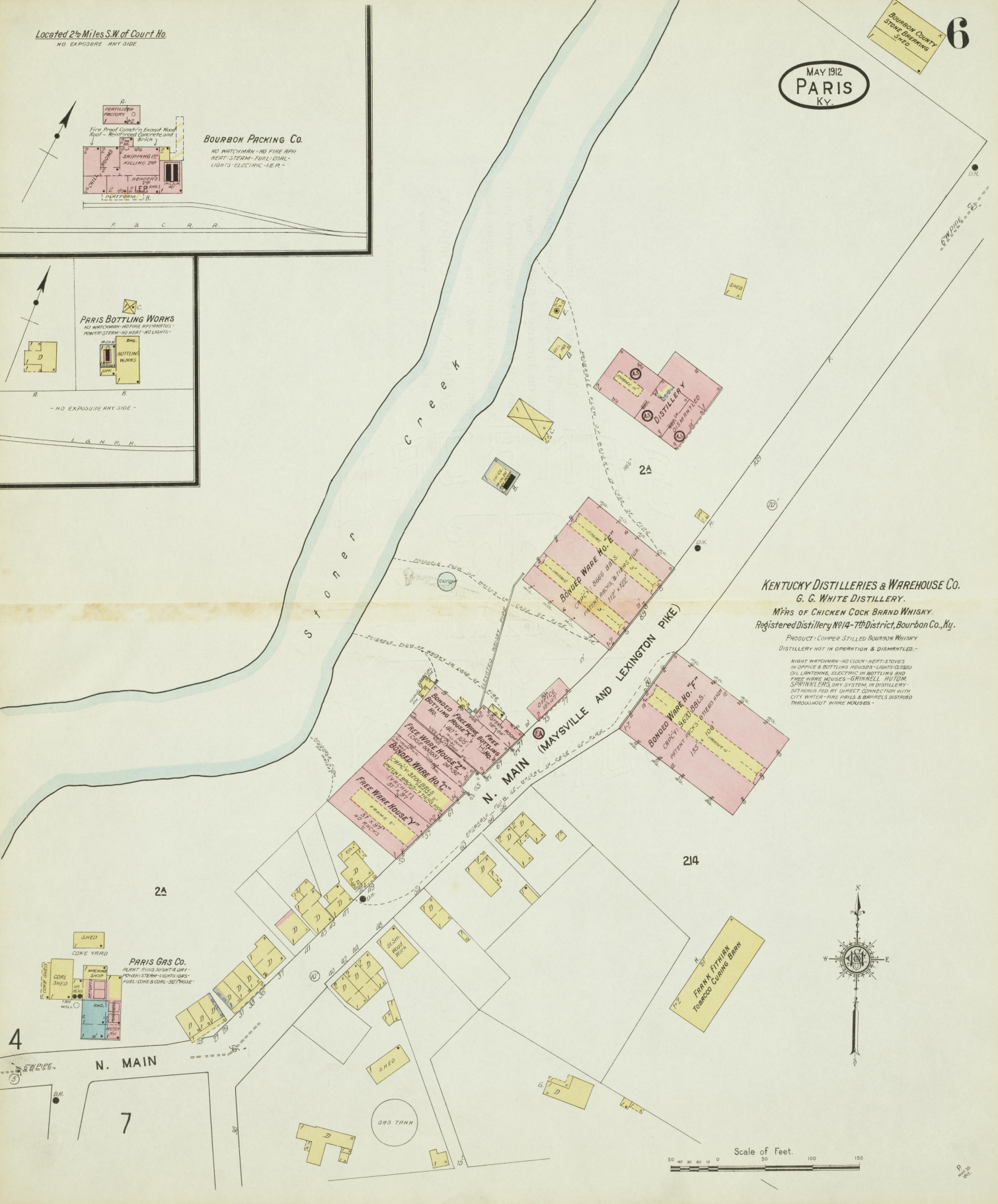
Bourbon County  
Stone Engineering  
6



**PARIS BOTTLING WORKS**

NO WATCHMAN - NO FIRE APP.  
HEAT - STEAM - NO HEAT - NO LIGHTS -  
ELECTRIC - 110 V.

NO EXPOSURE ANY SIDE

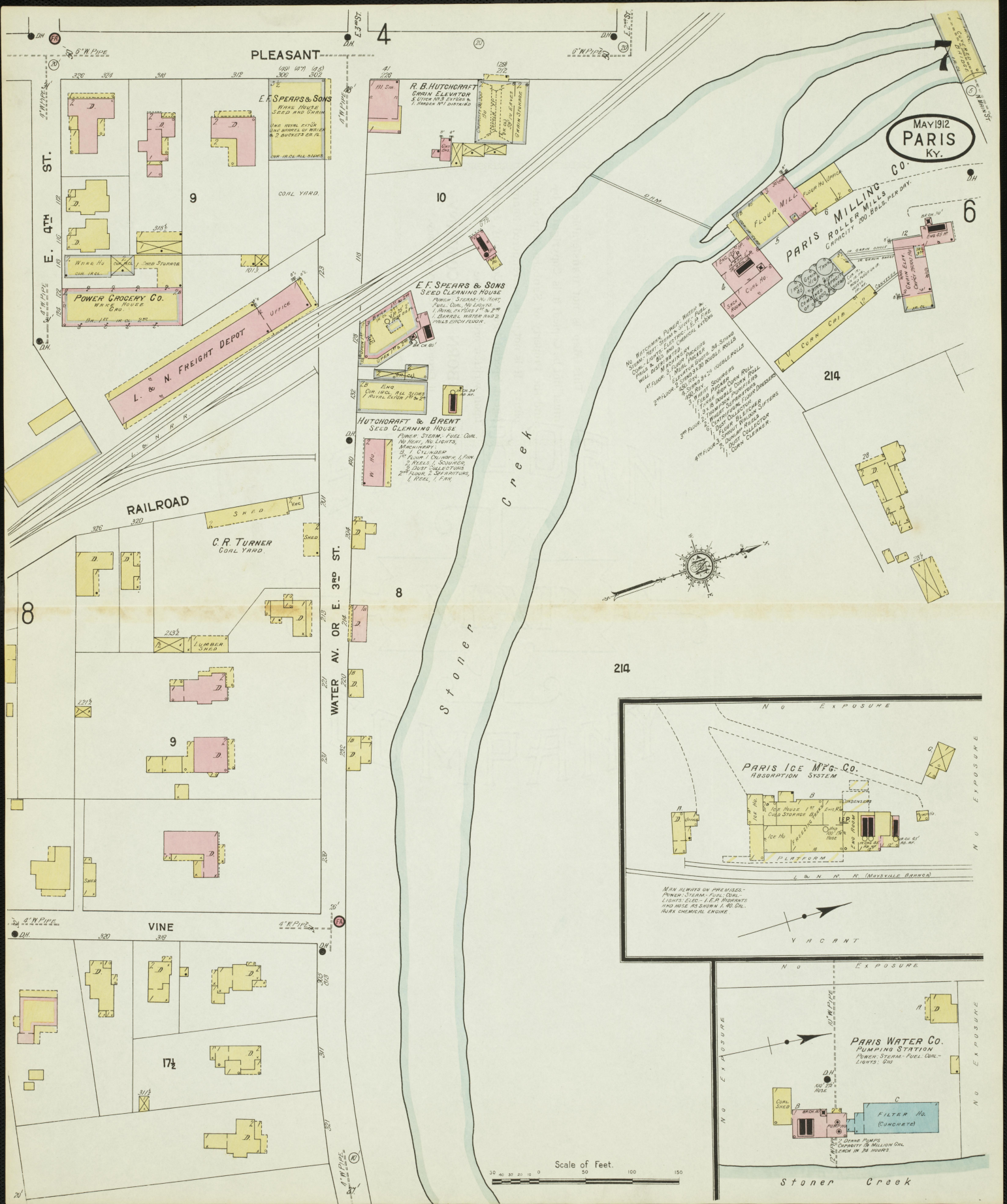


**KENTUCKY DISTILLERIES & WAREHOUSE CO.**  
**G. G. WHITE DISTILLERY.**  
MFRS OF CHICKEN COCK BRAND WHISKY.  
Registered Distillery No. 14 - 7th District, Bourbon Co., Ky.

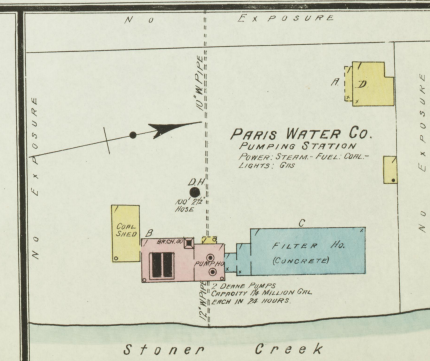
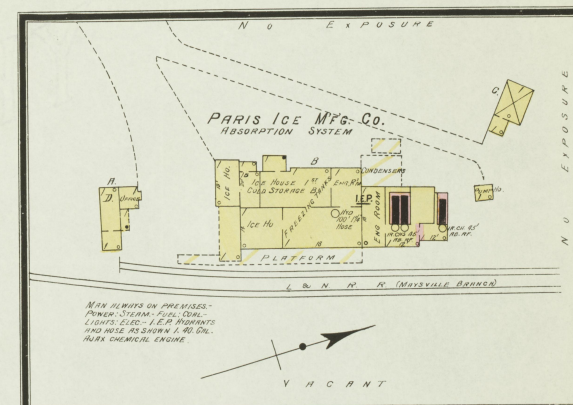
PRODUCT - COPPER STILLED BOURBON WHISKY  
DISTILLERY NOT IN OPERATION & DISMANTLED -  
NIGHT WATCHMAN - NO CLOCK - HEAT - STOVES  
IN OFFICE & BOTTLING HOUSES - LIGHTS - GASES  
OIL LANTERNS, ELECTRIC IN BOTTLING AND  
PIED WARE HOUSES - GRINNELL AUTOM.  
SPARKERS, WY. SYSTEM IN DISTILLERY.  
DIT HEATS FED BY DIRECT CONNECTION WITH  
CITY WHICH HAS PIPES & BRANCHES DISTRIBUTED  
THROUGHOUT WARE HOUSES -



Scale of Feet.  
0 50 100 150



- 1<sup>ST</sup> FLOOR: 100,000 LBS. OF  
2<sup>ND</sup> FLOOR: 100,000 LBS. OF  
DUST COLLECTORS,  
1, REEL, 1, PAN
- 2<sup>ND</sup> FLOOR: 100,000 LBS. OF  
2<sup>ND</sup> FLOOR: 100,000 LBS. OF  
DUST COLLECTORS,  
1, REEL, 1, PAN
- 3<sup>RD</sup> FLOOR: 100,000 LBS. OF  
2<sup>ND</sup> FLOOR: 100,000 LBS. OF  
DUST COLLECTORS,  
1, REEL, 1, PAN
- 4<sup>TH</sup> FLOOR: 100,000 LBS. OF  
2<sup>ND</sup> FLOOR: 100,000 LBS. OF  
DUST COLLECTORS,  
1, REEL, 1, PAN



MAY 1912  
PARIS  
KY.

5  
PLEASANT

8

13

7

18 1/2

17 1/2 ALLEY

VINE AVENUE

SCOTT AV.

DUNCAN AV.

E. 7TH ST.

E. 4TH ST.

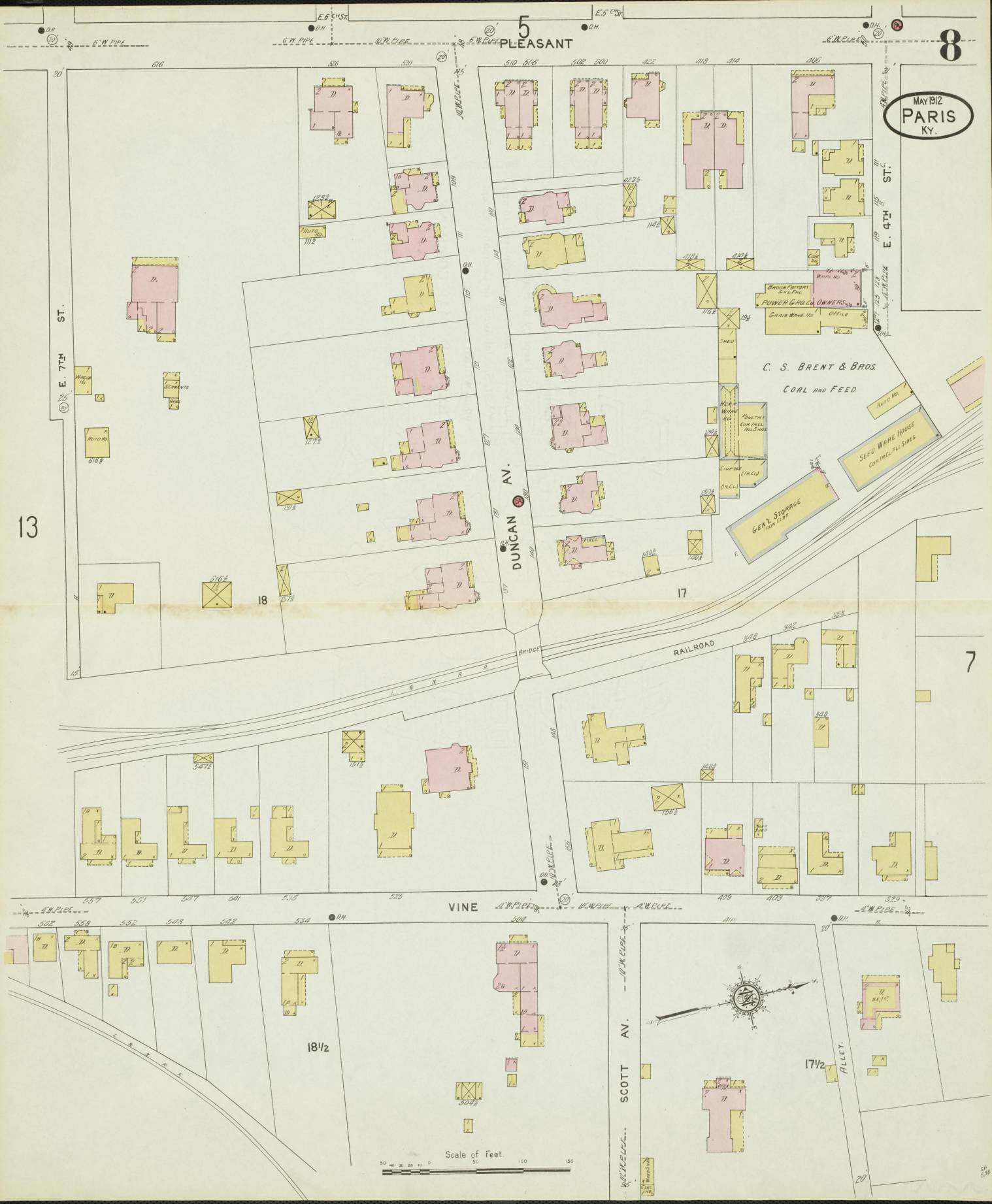
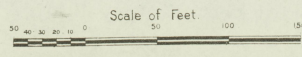
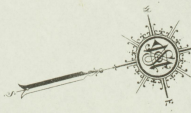
RAILROAD

C. S. BRENT & BROS.  
COAL AND FEED

POWER GRID CO. OWNERS  
OFFICE

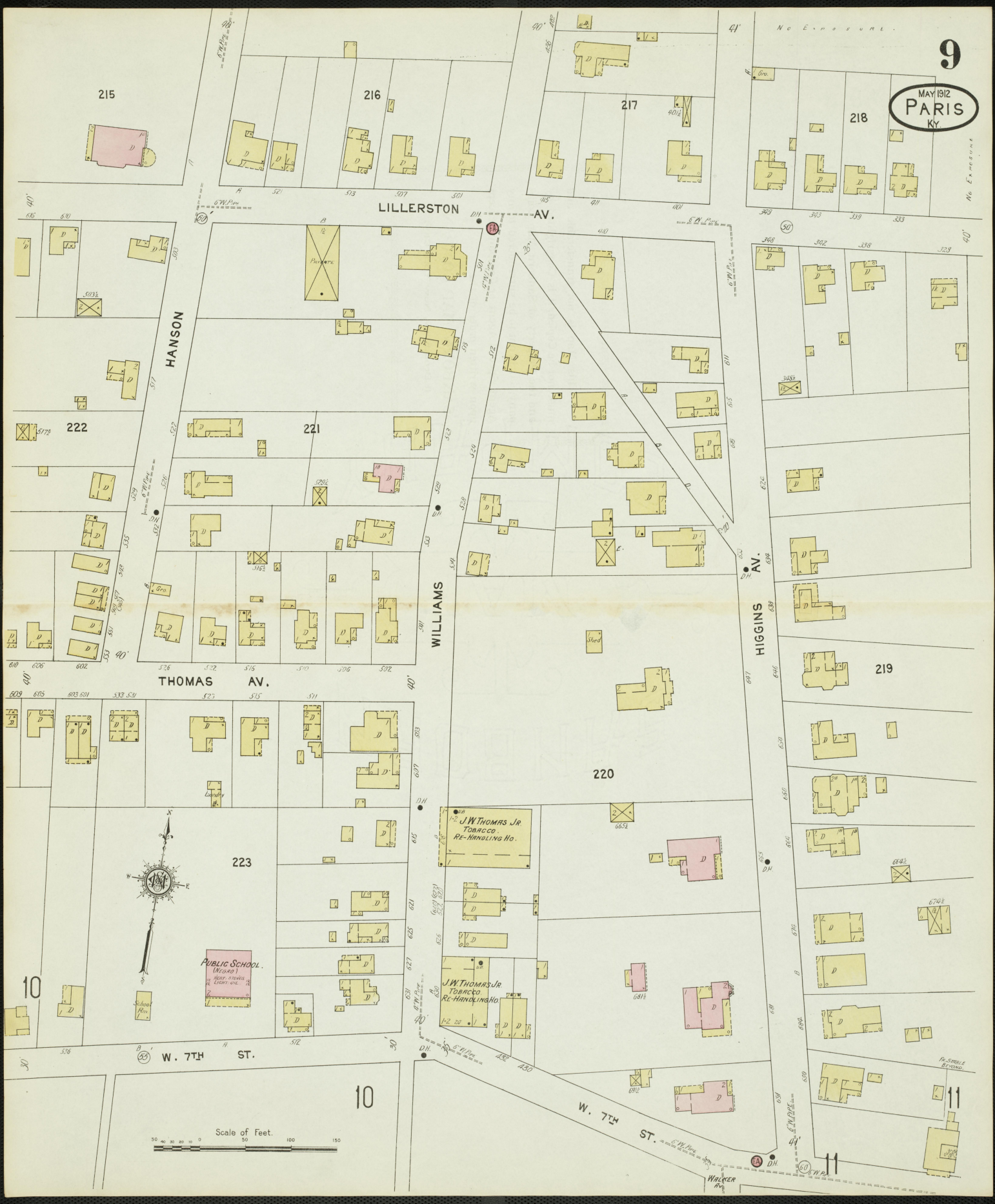
GEN'L STORAGE

SEED WARE HOUSE  
CON. INCL. ALL STAGES





MAY 1912  
PARIS  
KY



LILLERSTON AV.

HANSON

WILLIAMS

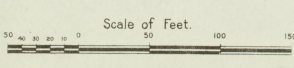
HIGGINS AV.

THOMAS AV.



PUBLIC SCHOOL (W. 7th St.)

W. 7TH ST.



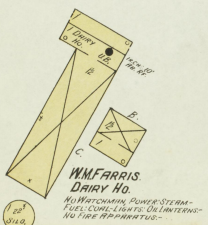
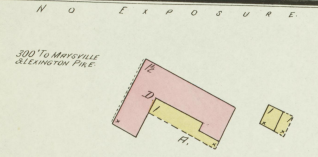
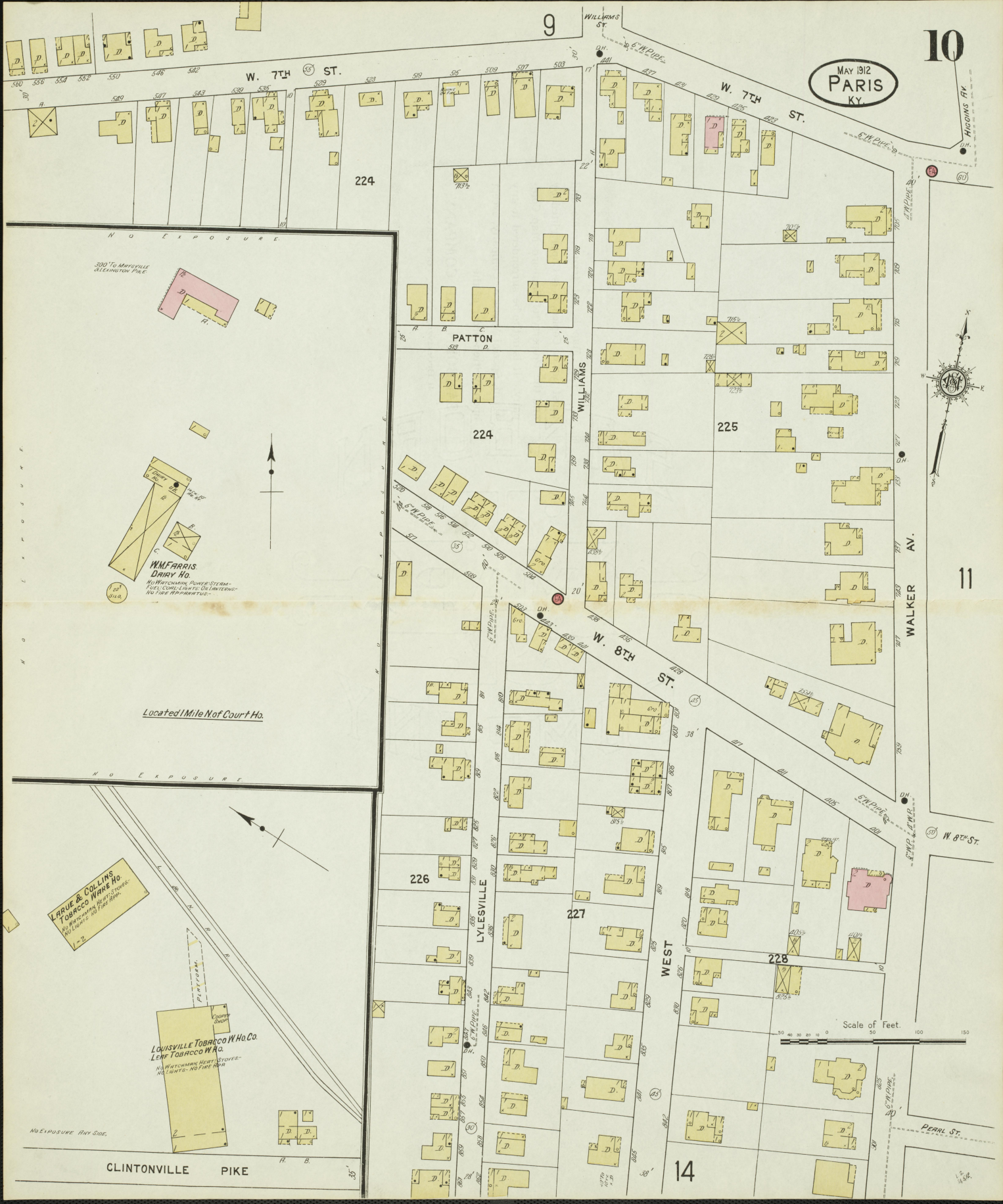
W. 7TH ST.

WALKER

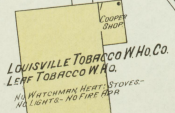
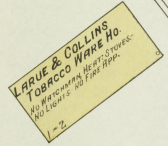
MAY 1912  
PARIS  
KY.

10

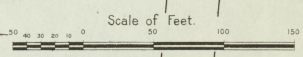
11



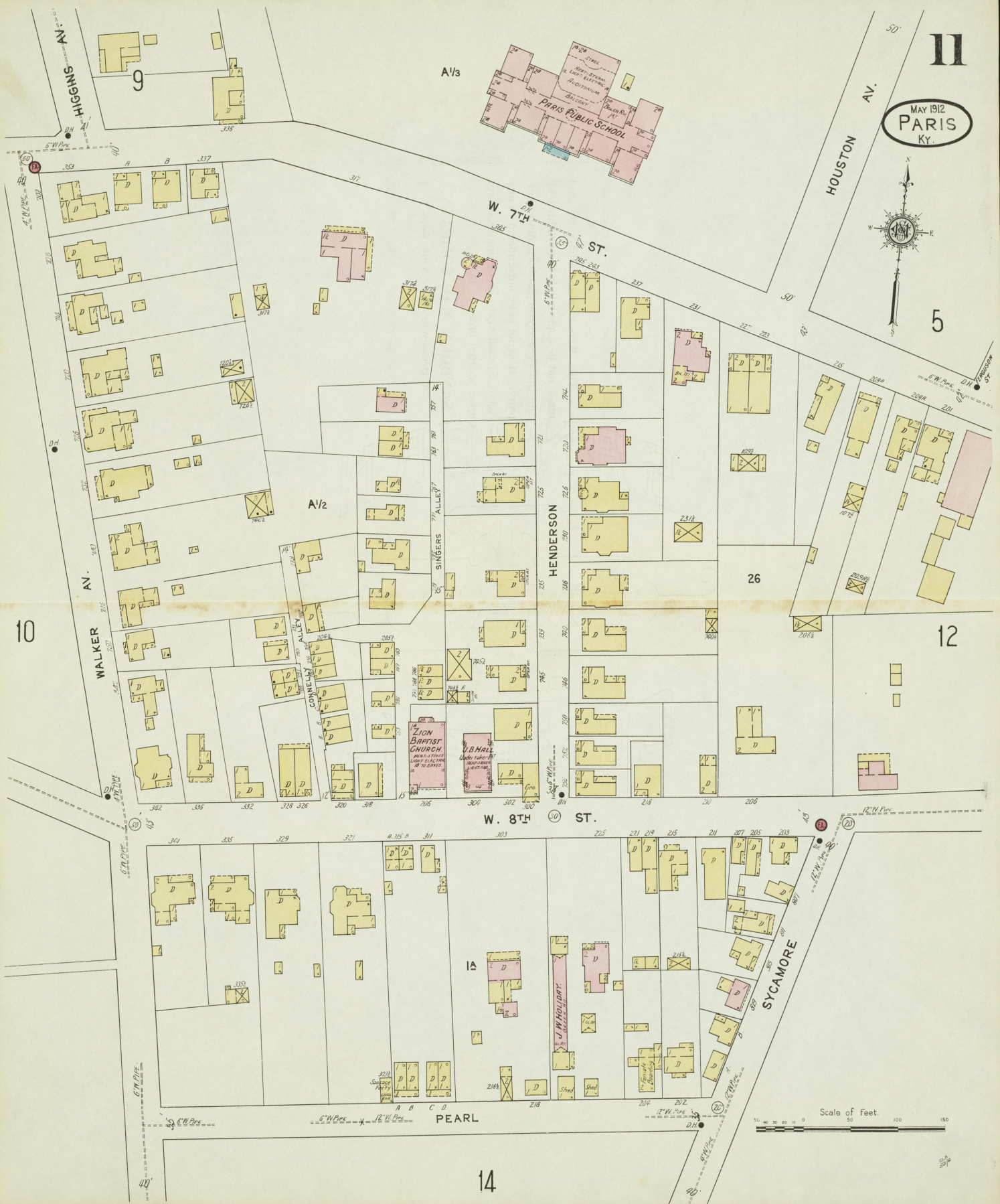
Located 1 Mile N of Court Ho.



CLINTONVILLE PIKE



MAY 1912  
PARIS  
KY.



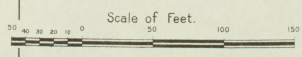
Scale of Feet.  
0 10 20 30 40 50 60 70 80 90 100 150

14

5



PLEASANT  
13



MAY 1912  
PARIS  
KY.

8

E. 7TH ST.

21



THORNTON

DIVN

12  
PLEASANT

Post Office

28

THORNTON  
DIVN

THE GEORGE WEIDEMANN BREWING CO.

BEER  
DEPOT

BEER  
DEPOT

E. 9TH ST.

29

L. & M. P. R. Supply  
Storage Co.

L. & M.  
P. & N. Offices

WAUSAU

PL. Brewery

34 1/2

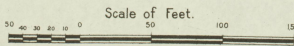
PARIS ELECTRIC LIGHT CO.  
Power & Light Supply - Central Station  
Gasoline and Oil - No. 10 - 11 - 12 - 13

CHAS. S. BRENT & BRO.  
Cigars, Stog, Tobacco, etc.  
Cigars & Tobacco Wh.

E. 10TH ST.

ST.

WINDYBROOK



16

VINE

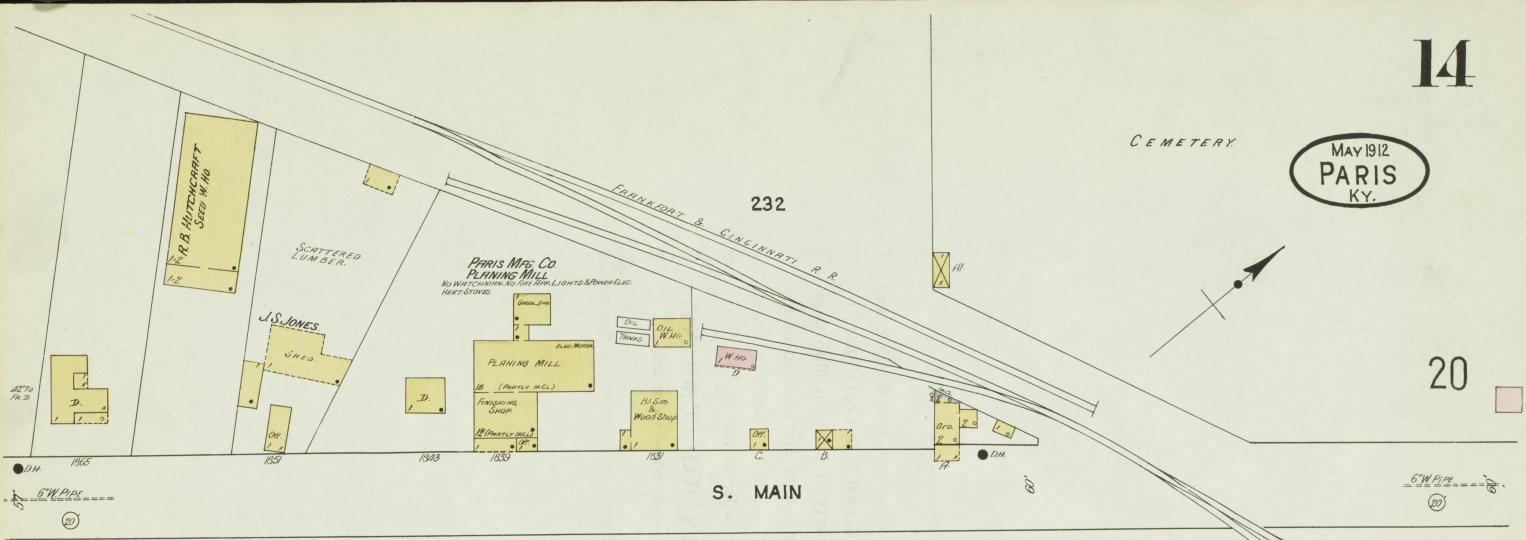
18 1/2

17

1912

MAY 1912  
PARIS  
KY.

CEMETERY



S. MAIN

45

VACANT



WEST

10

228

WALKER

11

BOURBON FEMALE COLLEGE

229

SHORT

PEARL

SYCAMORE

CYPRESS

18

18

15

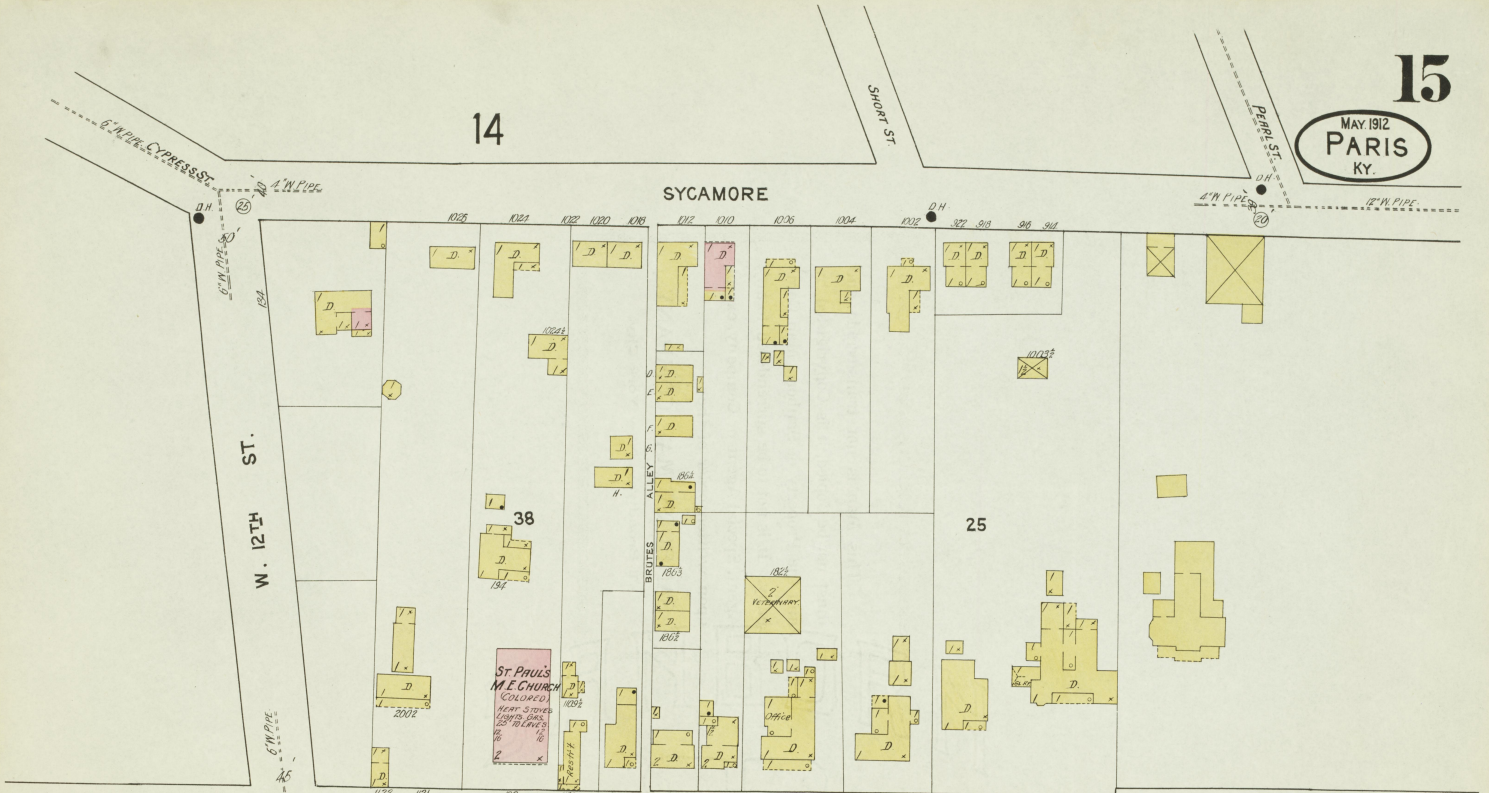
12

Scale of Feet.

12

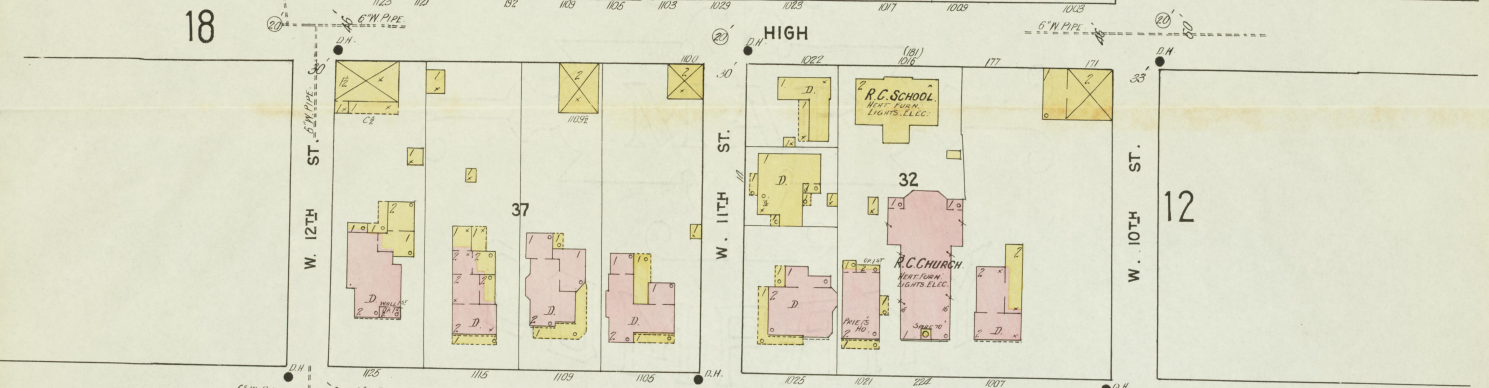
14

SYCAMORE

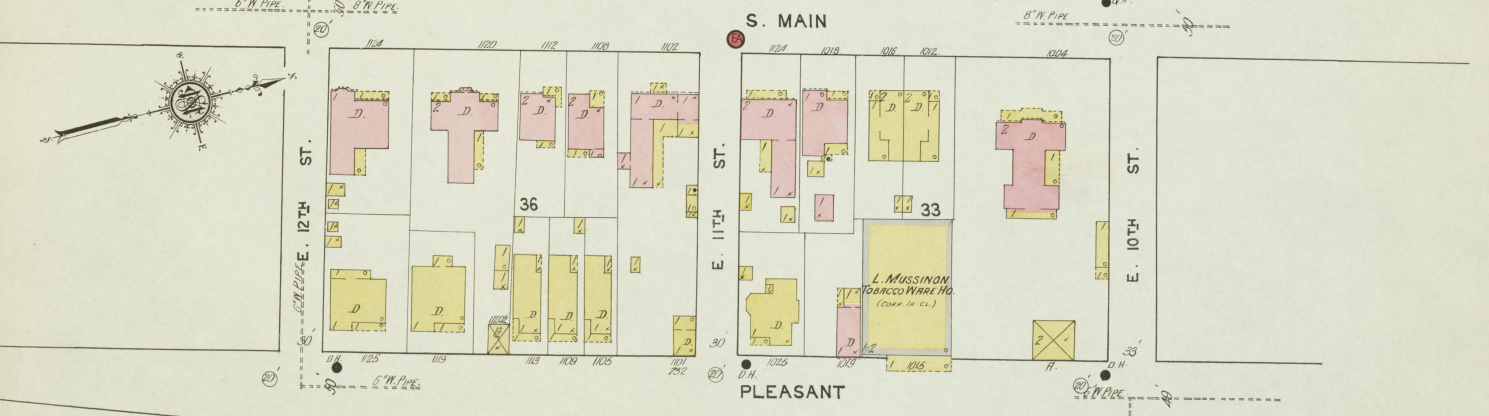


18

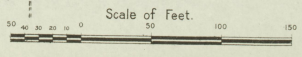
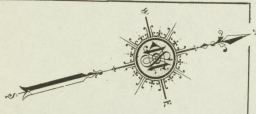
HIGH



S. MAIN



16



MAY 1912  
PARIS  
Ky.

13

10TH ST.

ST. JAMES HOTEL

L. A. R. P.  
PASSENGER STATION

W. C. CLEGG  
2102

34

34 1/2

J. S. WILSON  
TIRE & GRASS SEED DEALER  
Tires - 1000  
Grass Seed - 1000  
Auto Grass  
2104 N. 10.  
(A. C. 1.)

15

PLEASANT  
E. 11TH ST.

WINCHESTER AV.

35

37 1/2

17

E. 12TH ST.



34

18

Scale of Feet.  
0 50 100 150



MAY 1912  
PARIS  
KY.



16

18½

PARRISH  
AV.

HARMON  
AV.

WINCHESTER  
AV.

VINE

VINE

LINK

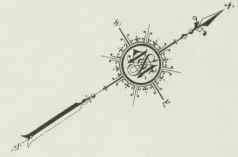
Scale of Feet.  
0 50 100 150

MAY 1912  
PARIS  
KY.

14

229

CYPRESS (SYCAMORE)



15

19

NEWTOWN  
W. 14TH ST.

W. 12TH ST.

HIGH

W. 13TH ST.

W. 12TH ST.

S. MAIN

E. 14TH ST.

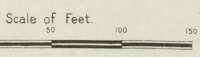
PLEASANT

E. 12TH ST.

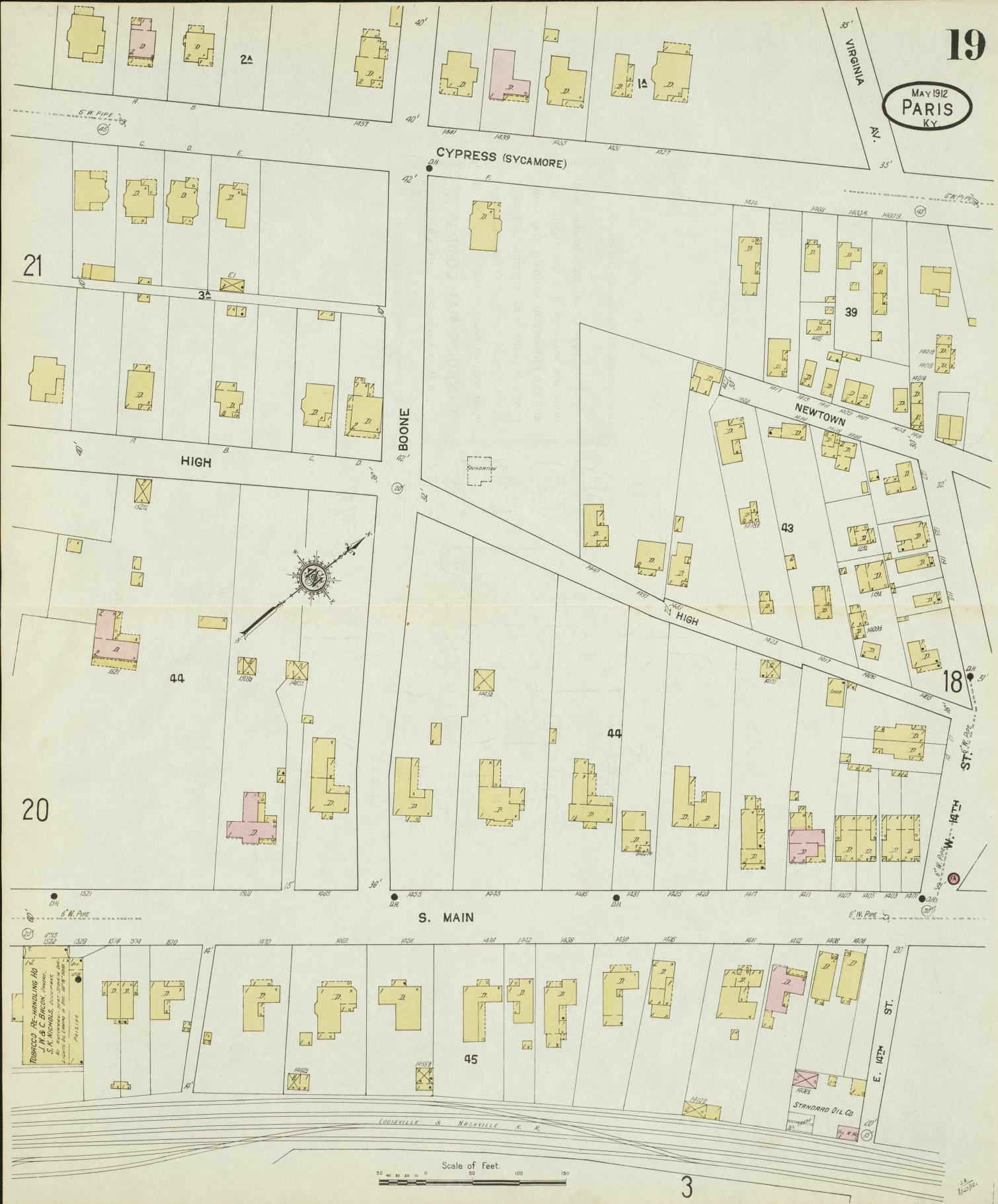
3

16

Map details including:  
- **BOURBON LUMBER CO.** (Lumber Piles, No Warehouse, No Fire Alarm)  
- **TEMPLIN LUMBER CO.** (Lumber Piles, No Warehouse, No Fire Alarm)  
- **PILING MILL** (One Elevator)  
- **LUMBER PILES** (Various locations)  
- **W. 14TH ST.**, **W. 13TH ST.**, **W. 12TH ST.**, **E. 14TH ST.**, **E. 12TH ST.**  
- **CYPRESS (SYCAMORE)**, **NEWTOWN**, **HIGH**, **S. MAIN**, **PLEASANT**

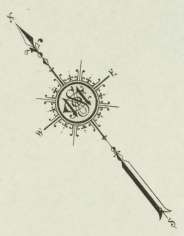


MAY 1912  
PARIS  
KY



Scale of Feet  
0 50 100 150





MAY 1912  
PARIS  
KY.

40'  
21

19

3A

2A

W. 15TH ST.

HIGH

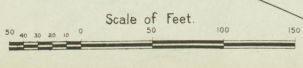
20

231

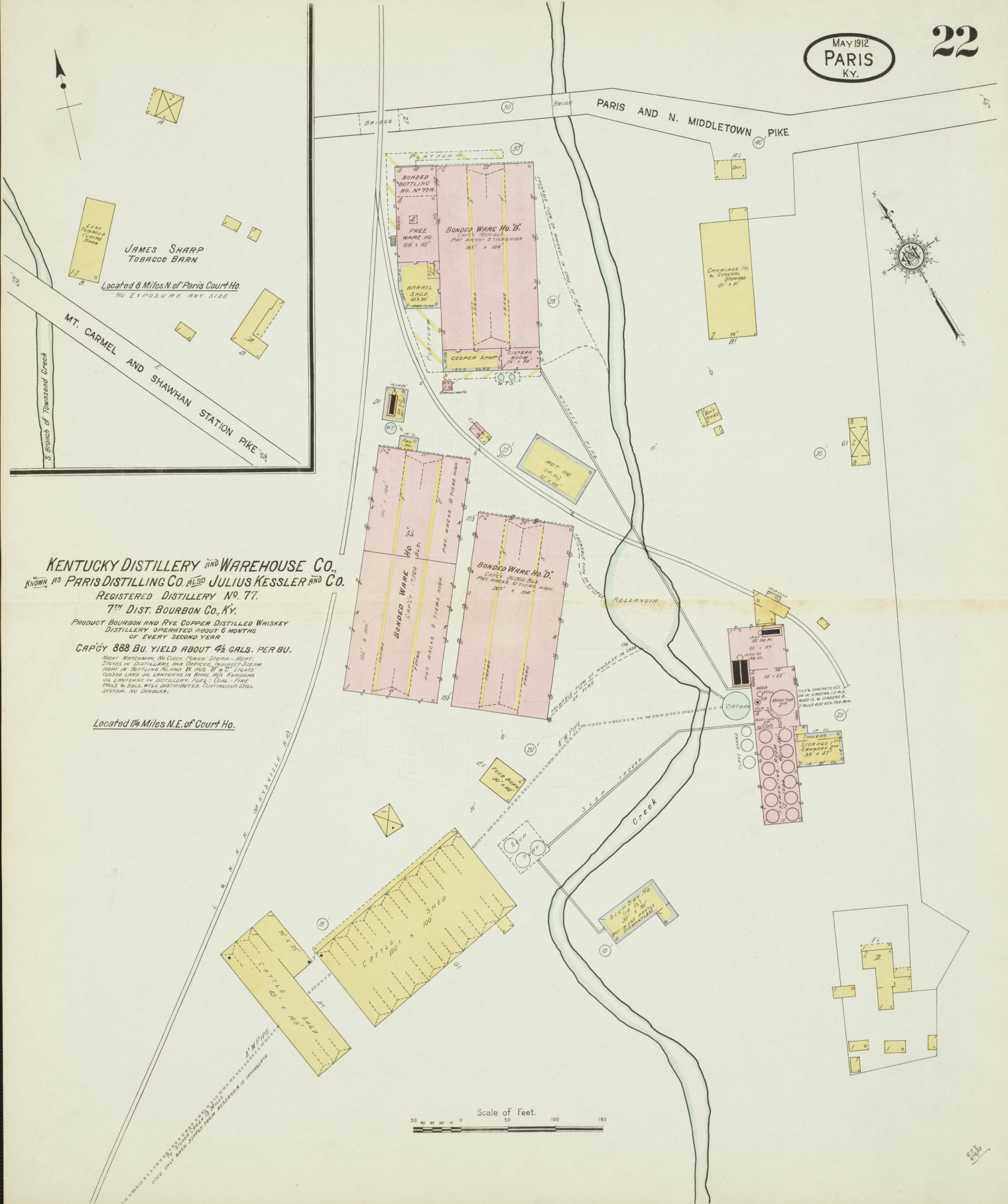
W. 16TH ST.

232

GEO W ELLIS  
TOWN AND REVENUE  
COMMISSIONER  
PLAT BOOK 100 PAGE 100  
1874



J. H. W. 1/11/12



JAMES SHARP  
TOBACCO BARN

Located 6 Miles N. of Paris Court Ho.  
NO EXPOSURE ANY SIDE

**KENTUCKY DISTILLERY AND WAREHOUSE CO.**  
 KNOWN AS **PARIS DISTILLING CO.** ALSO **JULIUS KESSLER AND CO.**  
 REGISTERED DISTILLERY NO. 77.  
 7<sup>TH</sup> DIST. BOURBON CO., KY.

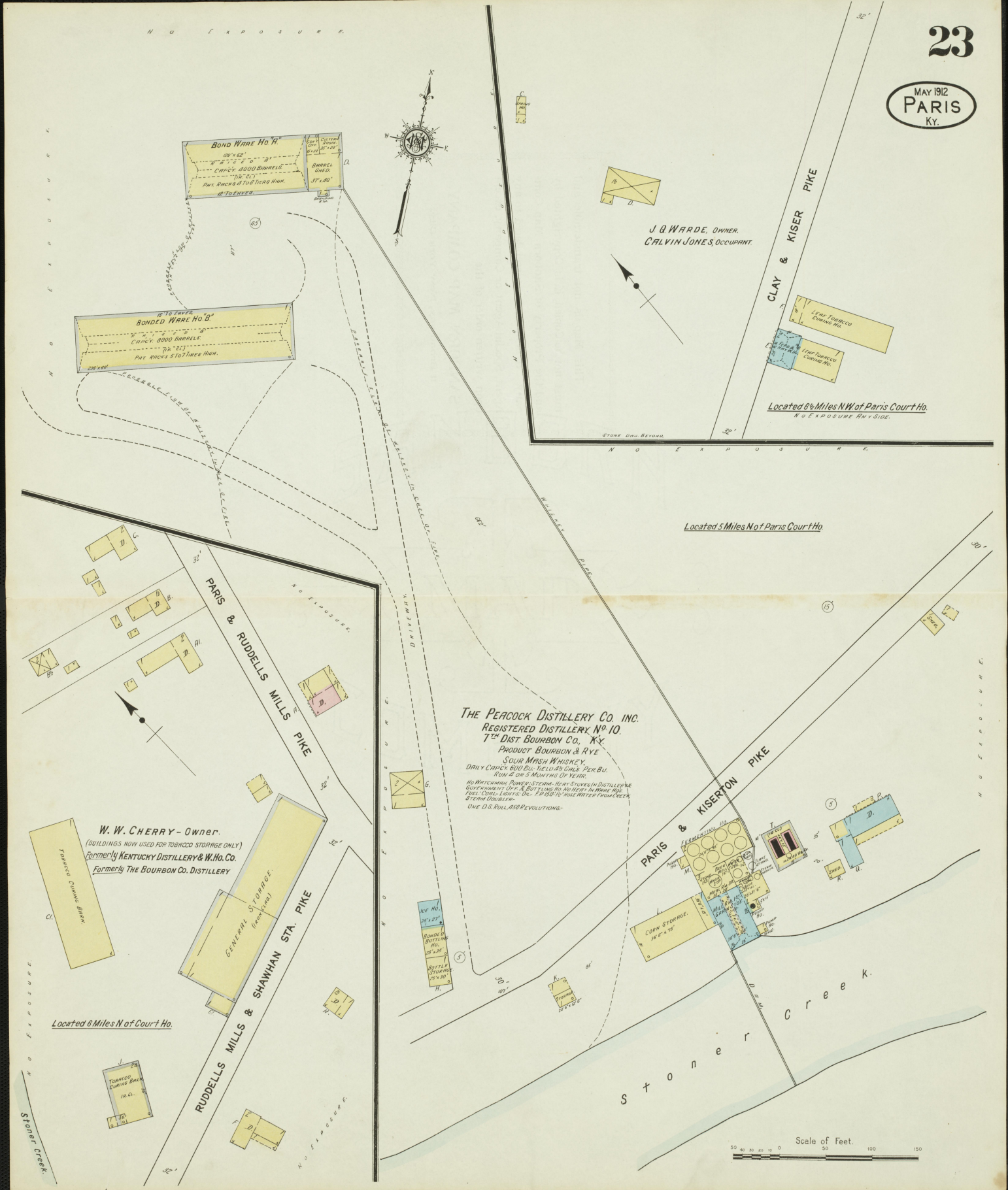
PRODUCT BOURBON AND RYE COPPER DISTILLED WHISKEY  
 DISTILLERY OPERATED ABOUT 6 MONTHS  
 OF EVERY SECOND YEAR

CAPACITY 888 BU. YIELD ABOUT 4 1/2 GALS. PER BU.

NOTE: MACHINERY, NO CLOCK, FURNACE, STEAM-HEAT,  
 STOVES IN DISTILLERY AND OFFICES. BOTTLES, STIVES  
 MADE IN BUTLINO PLANT IN 1895. 20' x 12' TUBS  
 COILED LARD OIL LAMPERS IN BURNING ROOMS.  
 OIL LAMPERS IN DISTILLERY. JOSEPH, CONN.-TYPE  
 PRESS & SUGAR WILL DISTRIBUTED. CONTINUOUS STILL  
 SYSTEM. NO SWAGERS.

Located 1/4 Miles N.E. of Court Ho.

Scale of Feet.  
 0 50 100 150



J & W WARDE, OWNER.  
CALVIN JONES, OCCUPANT

Located 6 1/2 Miles NW of Paris Court Ho.  
N O E X P O S U R E N W SIDE.

Located 5 Miles N of Paris Court Ho

THE PEACOCK DISTILLERY CO. INC.  
REGISTERED DISTILLERY No. 10.  
7th DIST BOURBON CO., KY.  
PRODUCT BOURBON & RYE.  
SOUR MASH WHISKEY.  
DAILY CRACK 600 BU. YIELD 45 GALS PER BU.  
RUN 4 OR 5 MONTHS OF YEAR.  
NO WATCHMAN (RUNS) STEAM HEAT EXHAUST (DISTILLER)  
GOVERNMENT U.P. & BOTTLING HO. HEAT IN BARGE HO.  
FEEL COOL LEAFER. DR. FRIGID HO. USE WATER FROM CREEK.  
STEAM DOUBLES.  
ONE U.S. ROLL, 450 REVOLUTIONS.

W. W. CHERRY - Owner.  
(BUILDINGS NOW USED FOR TOBACCO STORAGE ONLY)  
Formerly KENTUCKY DISTILLERY & W. HO. CO.  
Formerly THE BOURBON CO. DISTILLERY

Located 6 Miles N of Court Ho.

Scale of Feet.  
0 50 100 150