

G
23
6

Parties welcome students to UK

By Gary Wull
Assistant News Editor

Students will have an opportunity to relieve tension and panic before the fall semester begins at the annual Student Center Spectacular.

Approximately 2,000 new and transfer students are expected to attend the Student Center Spectacular on Sunday evening. A total of 17 different events were organized by the Student Activities Board and SGA.

Alex Goodman, Indoor Activities chairperson for SAB, helped line up the event this year, which includes three music groups, a comedian and a hypnotist.

"The Student Center Spectacular is one of the best ways to introduce new students and transfers to the large amount of different activities on campus," said Edward Marshall, program assistant for SAB.

A snake and reptile exhibit are among the new additions to this year's Spectacular. The exhibit will allow students to handle the snakes and reptiles.

Dancers will have two opportunities to show their skills. A professional country line dancer will be present to teach students how to boot scoot and other line dances. International students

will wear traditional clothes to teach folk dancing to any interested student.

Gamblers are invited to a Monte Carlo Casino Night which will feature 23 different games such as craps and blackjack. The games will be played with fake money and no prizes will be given for winning.

However, door prizes will be given throughout the evening.

The next night, the Student Government and Residence Hall Associations have planned the first annual "Back to School Bash."

The event is open to all students, faculty and staff.

Last spring, the Freshman Representative Council planned an "End of School Bash," but rain washed it out.

SGA summer Senate approved funding to reschedule the event for Monday.

"We're banking on no rain, because there really is no way to have an alternate site," said SGA president Alan Aja.

Barring inclement weather, the outdoor event will feature a live band, open basketball and sand volleyball.

UK Food Services will sell food and drinks. Radio station Z-103 will have a remote live broadcast from Haggin Hall Field.



LOOKING
ahead

Back to School Bash will be in Haggin Field Monday from 5:30 - 8 p.m.
The Student Center Spectacular will be at the Student Center from 8 - 11 p.m. Sunday.

Marching back onto campus



FLAG FORMATION The UK color guard practices in preparation for its opening performance at next Saturday's football season-opener against the University of Louisville. The marching band's first half-time show will feature a patriotic medley, complete with a "gigantic" American flag. Women participating on sorority recruitment week, below, line up in front of the Kappa Alpha Theta social sorority house Thursday before the final round of parties. They will receive their bids Friday morning based on their top three preferences.

By Kathy Reding
Assistant News Editor

While most students are making their UK debut or return trip, some have cut their summers short and have been on campus for the past week.

Women participating in sorority recruitment and members of the marching band have gotten a head start on their semester while putting in long hours with their organizations.

Since Sunday, marching band members have spent their days in the hot sun on Stoll field near the Student Center, learning formations and practicing music for their first show coming up Aug. 31 at the UK-UL football game.

Richard Clary, director of bands, said the 245 band members are preparing three shows for this year's season, the first one is a "traditional patriotic show featuring a gigantic American flag." The other two shows they will learn through the remainder of the year.

Clary said it takes about a week to learn the formations and music for each



Band and sorority members return early

show. "They'll have the first show on the field by the end of the week," Clary said.

Junior Margaret Dittinger, color guard squad leader, said the band has been working daily from 8:30 in the morning until 9 at night. Once classes begin, rehearsal time will be reduced to six hours per week.

Dittinger said they have had a week less to prepare this year since the football season is beginning earlier, but they will be ready for the opening game.

Coming back to campus

a week early for days of rehearsal hasn't bothered Dittinger even though it shortened her summer. "Band is a great bonding experience, especially for the freshmen," she said. "You get to know people if you spend 12 hours a day with them."

While the band was marching, 623 women were also participating in sorority recruitment week.

Dean Susan West, sorority adviser, said the process began last Saturday and ends with bid day today. The number of women involved is up from the 534 who went through last year.

West said part of the increase is due to the greater promotional work done by the Panhellenic Council this year and the new format for recruitment.

"One of the goals of Panhellenic was to change the image of sorority life," West said. The process is no longer called "rush," but has been changed to "recruitment week," West said. She said the process has become more relaxed and less formal.

This year, women were allowed to wear casual clothes for the first three rounds instead of dressing up.

"There is more emphasis on community service than entertainment," West said. "They are given more information about the chapter."

When the recruitment process ends with today's bid day, each of the 13 sororities will offer membership to a maximum of 38 women, West said. It is then up to the women whether or not they join the organization they have been invited to.

Nancy Baldwin, a sophomore transfer student, who has been participating in the recruitment week said she enjoyed the process because of the people she met.

"I'm new to UK. I didn't know anyone," Baldwin said.

Kelly O'Bryan, a freshman, said it had been a fun week but that it was hard to choose preferences.

"It gets stressful if you don't get invited back to where you wanted," O'Bryan said. "I've already cut them down."
West said women who did not participate in formal recruitment but are still interested in sorority life can register for open recruitment beginning Monday at 575 Patterson Office Tower.

Add/Drop hints simplify class schedule changes

By Gary Wull
Assistant News Editor

UK-VIP is relatively easy to use, but every once in a while, things don't work out as planned and a number of questions emerge. Here is a guide to help you through this year's Add/Drop:

▼Add/Drop opens on Aug. 27 at 7 a.m. and closes on Sept. 4 at 8 p.m.

▼If you forget your PAC number, go to Student Records, 10 Funkhouser, with a picture ID. Your PAC cannot be released over the telephone or without a photo ID.

▼Phones in the registrar's office are not answered faster than other calls. The calls are taken in the order in which they are received.

▼The conditional drop/add function does not allow a student to drop a course until the student successfully adds a replacement course.

▼If a student adds a new course, the system confirms by repeating the course prefix, course number and section number of the course they have added, followed by the course prefix, course number and section number of the course they

student has dropped. ▼UK-VIP allows a student to check open sections of a course against courses, a person is currently enrolled in and alerts that student to open sections that fit into their schedule.

▼If a class is closed, go to the class for the first couple of days. Some students enrolled in the class may drop it in the first few days. If no one drops the class, a student may be able to get an override from the professor.

▼A student can pick up a printed schedule by presenting a photo ID in the Registrar's Office, or by going to any micro-computer lab.

▼Overlapping schedules is possible, but not through UK-VIP. If you receive permission to register in two courses that have overlapping meeting patterns, go to 5 or 6 Funkhouser Building your registration or Add/Drop window.

▼If you have questions, consult the fall registration book. For further questions, students can call the Registration Help Line at 257-7173. Help is available Monday through Friday between 8 a.m. and 4:30 p.m.

UK-VIP has the open line for class registration

By Lindsay Hendrix
Features Editor

It's one of those technological advances that makes our lives easier. Although we don't realize it, we save time and escape hassles every time we use it.

Just ask any student who endured Add/Drop before the new system was installed in the 1993 fall semester. They are counting their blessings.

When it comes to registering, adding and dropping classes, UK's Voice Information Processing Network, commonly known as UK-VIP, has brought relief to the campus.

"(VIP)'s a lot easier than standing in line," said Ava Beckett, a secondary Spanish senior. "As far as registering — you can do it in five minutes and be done."

Although registering has been done by computers for years, students used to have to wait in line

to speak directly with a staff member who entered the information at a computer terminal.

Now, students use the telephone to communicate with a box located in McVey Hall

that contains the actual VIP operating system. VIP uses the Student Information System (SIS) to retrieve the information it needs to work correctly.

For example, when your VIP window opens is based on your social security number and student status. The VIP system obtains their information from SIS.

This convenient connection can present a problem, however.

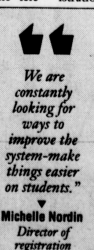
"If SIS goes down, then VIP will not function either," said Michelle Nordin, director of registration.

But this doesn't happen often. As a matter of fact, it has only happened once in the month that Nordin has held this position, and it was only down for a few minutes.

"It functions pretty well, all things considered," she said. "(VIP) is so much better. We're constantly looking for ways to improve the system — make things easier on students."

Although it has improved greatly from the days of long lines in

hot weather, there are still a few complaints about getting busy sig-



The Procrastinator's Calendar
The dead last day to...

- Drop a class with a full refund — August 27
- Add or drop a class with UK-VIP — September 4
- Pay fees — September 11
- Drop a class without a "W" grade — September 18
- Withdraw from a class — October 25

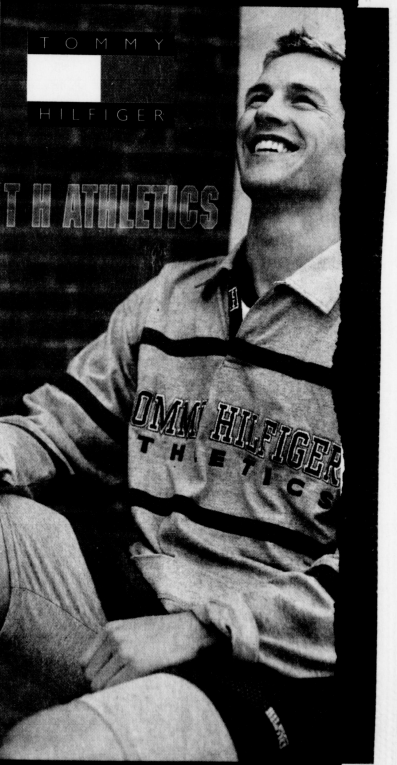
Main table containing multiple columns of data, including names, numbers, and dates. The table is organized into several vertical sections, each with its own column headers. The data appears to be a list of transactions or records, possibly related to a lottery or a similar system, given the context of the page header.

Table with columns for course ID, course name, credits, and sections. Includes courses like CME 433, CME 505, CME 558, etc.

Advertise in the Kernel.

WELCOME BACK UK STUDENTS! FITNESS Today's Choice OPEN 24 HOURS Back to School SPECIAL \$24.95/month LEXINGTON: 151 W Zandale Lexington, KY 276-1151

McAlpin's these are the CHOICES



this is the place

bw-3 Grill & Pub advertisement. Features a cartoon character, a list of services (Daily Happy Hour, NTN Interactive Trivia, etc.), and promotional offers like '50% Off Taco Salad' and 'TUESDAY 20 WINGS'.

The Independent Study Program logo and address: Room 1 Frazier Hall - 257-3466

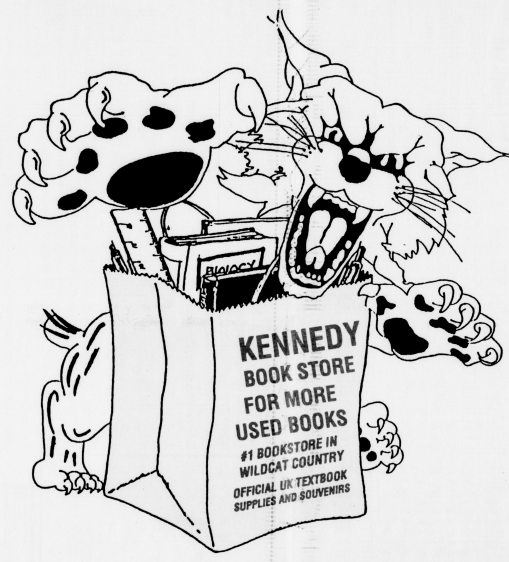
290 S. Limestone 233-BWWW 299 - Corner of Limestone & Maxwell

Men's Collections - Lexington Mall, Turfgrass Mall, Fayette Mall

KENNEDY BOOK STORE

For More Used Books

Save 25%



If Saving Money Is Your Bag, Be Sure To Get Ours.

Your source for official UK Textbooks since 1950

Open Sunday 11-6
And Extended Hours
This Week

252-0331 • Corner of S. Limestone and Euclid

“We’ve Got The Corner On Savings”



Table of Kentucky Kernel Add Drop Edition, Friday, August 23, 1996. Columns include station call letters, frequency, power, and time slot. Rows are organized by station call letters (e.g., 0300PM, 0305PM, 0310PM, etc.).

Advertise in the Kernel.

Smith's Barber Shop
1802 Alexandria Drive, Lexington, KY 40504
Clean, Courteous, Professional Service
Phone 278-1370
Open Mon. Through Fri., 9:00 a.m. to 6:00 p.m. and Sat., 8:30 a.m. to 3:00 p.m.

Imperial Plaza
Waller Avenue
233-0956
Blimpie SUBS & SALADS
Triangle Center Downtown 231-5855
Palomar Center 224-4322
301 Southland Drive Rose Street 231-9499
Tates Center 272-4549
Crossroads Center Nicholasville 245-2992
Kroger Center Bryan Station Road 293-1379
Try a Blimpie combo meal today!
50¢ OFF 6" \$1.00 OFF Footlong!

The Graduate School Doctoral Dissertation Defenses

Table listing doctoral dissertation defenses with columns for Name, Program, Dissertation Title, Date, and Location.

CELLULAR ONE INTRODUCES NEW STATEWIDE LOCAL CALLING!!

Kentucky KW HOME
New Statewide Local Calling
Blugrass State

No long distance charges to call anywhere in the state of Kentucky when the call originates from your home area.
Certain qualified rate plans with the unlimited nights and weekend option package allow you to make free calls anywhere in Kentucky every night and all weekend long.

FOR MORE INFORMATION CALL:
CLIFF HENDERSON, III
(606) 321-3021

02476	GEO	130	001	6	3.0	MWF	1100AM	1150AM	02485	GEO	152	007	5	3.0	S	030	000AM	1055AM								
02477	GEO	130	002	17	3.0	TR	0930AM	1045AM	02486	GEO	152	008	4	3.0	TR	0930AM	0950AM	02529	GEO	222	001	31	3.0	TR	0900AM	0915AM
02478	GEO	152	001	6	3.0	MWF	1200PM	1250PM	02487	GEO	152	009	4	3.0	TR	0930AM	0950AM	02530	GEO	222	002	30	3.0	TR	0900AM	0915AM
02480	GEO	152	002	1	3.0	TR	0930AM	1045AM	02488	GEO	152	010	4	3.0	TR	0930AM	0950AM	02531	GEO	222	003	29	3.0	TR	0900AM	0915AM
02481	GEO	152	003	5	3.0	TR	1230PM	0145PM	02489	GEO	152	011	4	3.0	TR	0930AM	0950AM	02532	GEO	222	004	28	3.0	TR	0900AM	0915AM
02482	GEO	152	004	9	3.0	MWF	1000AM	1050AM	02490	GEO	152	012	4	3.0	TR	0930AM	0950AM	02533	GEO	222	005	27	3.0	TR	0900AM	0915AM
02483	GEO	152	005	1	3.0	S	030	000AM	02491	GEO	152	013	4	3.0	TR	0930AM	0950AM	02534	GEO	222	006	26	3.0	TR	0900AM	0915AM
02484	GEO	152	006	1	3.0	S	030	000AM	02492	GEO	152	014	4	3.0	TR	0930AM	0950AM	02535	GEO	222	007	25	3.0	TR	0900AM	0915AM
									02493	GEO	152	015	4	3.0	TR	0930AM	0950AM	02536	GEO	222	008	24	3.0	TR	0900AM	0915AM

CINEMARK THE AIRS

LEXINGTON GREEN 8
 11:50 2:30 4:10 7:30 10:50 PM

MAN O WAR 8
 11:50 2:30 4:10 7:30 10:50 PM

WOODHILL MOVIES 10
 12:30 2:15 4:00 7:30 10:30 PM

TIME TO GET NOTICED!

257-2871

02537	GEO	222	009	4	3.0	TR	0930AM	0950AM	02546	GEO	208	001	4	2.0	MW	1000AM	1050AM
02538	GEO	222	010	3	3.0	TR	0930AM	0950AM	02547	GEO	208	002	3	2.0	TR	1000AM	1050AM
02539	GEO	222	011	3	3.0	TR	0930AM	0950AM	02548	GEO	208	003	3	2.0	TR	1000AM	1050AM
02540	GEO	222	012	3	3.0	TR	0930AM	0950AM	02549	GEO	208	004	3	2.0	TR	1000AM	1050AM
02541	GEO	222	013	3	3.0	TR	0930AM	0950AM	02550	GEO	208	005	3	2.0	TR	1000AM	1050AM

WILDCAT CALLING

Student Telephone Services
Room 255 Student Center
257-1331
 \$\$ No Sign-up Fee
 \$\$ Discount Long Distance Rates
 \$\$ Monthly Billing to Campus or Home Address
 \$\$ Basic Features Provided Free of Charge

On site hours:
 Saturday, August 24: 8:00 a.m.-4:00 p.m.
 255 Student Center Only
 Sunday, August 25: 9:00 a.m.-3:00 p.m.
 *near Blandin/Kirwan Complex 3 at the Wildcat Calling Tent
 Monday, August 26-Friday, August 30
 8:00 a.m.-6:00 p.m. 255 Student Center
 OR 9:00 a.m.-5:00 p.m. on Rose Street

Choose from one of the following packages or order a la carte:

SmartPak A \$3.00/mo.
 Call Waiting/Cancel Call Waiting
 3-Way Calling

SmartPak B \$5.00/mo.
 Smart Pak A
 Speed Call 26
 Automatic Busy Redial
 Automatic Call Return


Voicemail \$5.00/mo.
 This is a personal answering machine

a la carte Features \$2.00 each/mo.
 Auto Busy Redial
 Auto Call Return
 Call Block
 Call Forwarding
 *Calling Number ID
 Call Waiting
 Special Call Acceptance
 Special Call Forwarding
 Speed Call 26
 3-Way Calling
 VIP Alert

*Requires box rental for 53/mo.

02551	GEO	208	006	2	2.0	MW	1000AM	1050AM	02560	GEO	208	013	3	2.0	TR	1100AM	1150AM
02552	GEO	208	007	3	2.0	TR	1000AM	1050AM	02561	GEO	208	014	3	2.0	TR	1100AM	1150AM
02553	GEO	208	008	3	2.0	TR	1000AM	1050AM	02562	GEO	208	015	3	2.0	TR	1100AM	1150AM
02554	GEO	208	009	3	2.0	TR	1000AM	1050AM	02563	GEO	208	016	3	2.0	TR	1100AM	1150AM
02555	GEO	208	010	3	2.0	TR	1000AM	1050AM	02564	GEO	208	017	3	2.0	TR	1100AM	1150AM

Our checking accounts come with a reusable check.



Bank One THE ONE Card
 THE ONE Card
 4000 2284 5078 501E
 2/99 OJ
 PAT. FRANCES

Presenting THE ONE Card.

The hassle of check approval can be a thing of the past when you carry THE ONE Card. Because THE ONE Card looks like a credit card, but works like a check, it allows you to make checking account purchases wherever Visa® is accepted. THE ONE Card also gives you 24-hour ATM access, and is available with any Bank One checking account.*

Stop by and open the Bank One checking account that meets your individual needs.

Financial Center near campus:
 Chevy Chase - 727 Euclid Avenue

ATM locations near campus:
 Chevy Chase - 727 Euclid Avenue
 UK campus - Student Center
 UK campus - Commons Building
 SuperAmerica - 515 East Euclid
 SuperAmerica - 819 South Limestone

Bank One Whatever it takes.
 Bank One, Lexington, VA
 Member FDIC.

*Subject to approval.
 *Offer good through August 30, 1996

Complimentary Checks
 Open your account and receive 50 complimentary Antique style checks.**

See CLASSES on B2

02565	GEO	208	018	3	2.0	TR	1100AM	1150AM
02566	GEO	208	019	3	2.0	TR	1100AM	1150AM
02567	GEO	208	020	3	2.0	TR	1100AM	1150AM
02568	GEO	208	021	3	2.0	TR	1100AM	1150AM
02569	GEO	208	022	3	2.0	TR	1100AM	1150AM

Follow The Map For Savings!
 Lexington's best kept secret also offers you special savings. Act now and save \$\$\$!

Our super-sized apartments come with far more than just convenience and a super price! Our huge 2 or 3 bedroom apartments are ideal for students or roommates. And, Cloisters adds more value by paying all major utility bills!

- Huge 1, 2 and 3 Bedroom Apartments
- Ideal Location, Minutes From Downtown Shopping, Entertainment and UK
- Planned Activity Program w/ Activities Director
- 2 Sparkling Swimming Pools
- Sand Volleyball Court
- Tennis Court
- 24 hour Emergency Maintenance Service!

CALL 272-4561

Cloisters ON THE GREEN

EQUITY REALTY



ACROS

1 Trip
 6 You b
 9 Big m
 14 Think
 15 "Butte"
 16 "Free"
 16 Michie
 17 chapir
 17 Gloom
 18 Lose e
 19 for
 20 Went i
 21 Wide t
 22 Neveri
 23 Cupy
 25 Odsen
 26 Initiate
 31 Ghost
 35 Griffer
 38 Actros
 39 - Mar
 40 Shippy
 40 Doll
 43 Watch
 48 Scharis
 49 Baset
 50 Bridge
 51 Luge o
 52 tobogg
 53 Cranm
 57 Couple
 60 Prima t
 61 songs
 63 "Read i
 65 HaspBa
 68 Find th

14

17

20

23

35

39

43

49

57

58

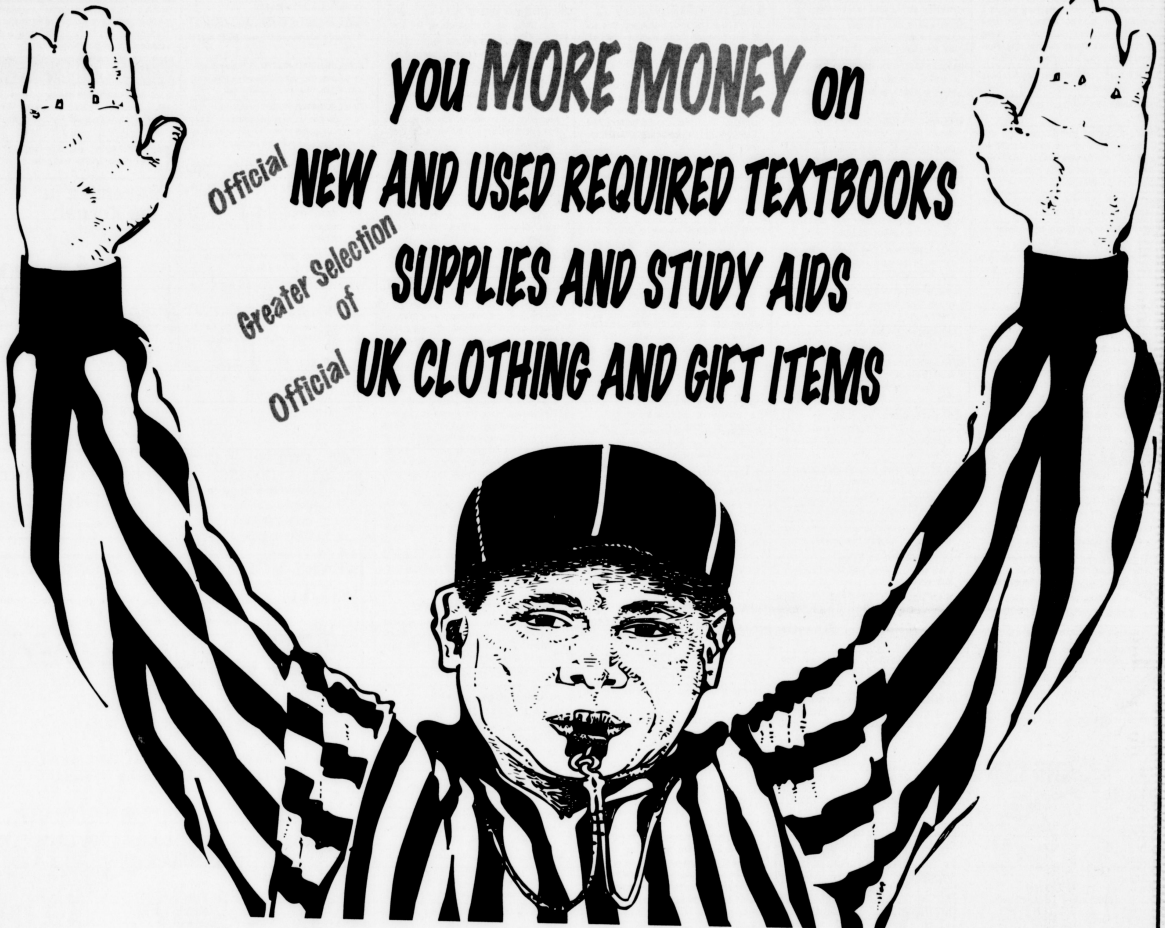
65

69

72

FROM
 1st
 2nd
 3rd
 4th
 5th
 6th
 7th
 8th
 9th
 10th
 11th
 12th
 13th
 14th
 15th
 16th
 17th
 18th
 19th
 20th
 21st
 22nd
 23rd
 24th
 25th
 26th
 27th
 28th
 29th
 30th
 31st

UK BOOKSTORE SAVES



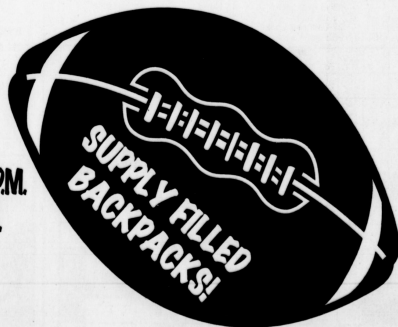
Official **you MORE MONEY on**
NEW AND USED REQUIRED TEXTBOOKS
Greater Selection of **SUPPLIES AND STUDY AIDS**
Official **UK CLOTHING AND GIFT ITEMS**

Come In And Register To Win!



SPECIAL HOURS:

AUGUST 23 AND 24 8 A.M. UNTIL 6 P.M.
AUGUST 25 12 NOON UNTIL 10 P.M.
AUGUST 26 THROUGH 29 7:45 A.M. UNTIL 9 P.M.
AUGUST 30 AND 31 7:45 A.M. UNTIL 7 P.M.



YOUR *official* BOOKSTORE

106 Student Center Annex

257-6304

BUNC
By Da
Assista

The
Ap
too
very
gown
Buncl
appea
which
Bej
series.
1969
117 e
family
ing sp
love
year's
For
entire
famili
additi
Brady

Stu
to l
By Chri
Sports E

Stu
the I
begins
ticket v
rial Co
The
son at
against
day. Ar
will tel
ally.
Stu
same l
day ne
Admini
Stiles
10,000
student
For



'I think the Bradys are, and always have been a fantasy, but they are a universal classic fantasy that a lot of people identify with.'

— Shelley Long



Photo furnished

Marcia, Marcia, Marcia!



Photo furnished

BUNCH OF BRADYS The entire cast of 'The Brady Bunch Movie' return as the family from the '70s that we have grown to love (or hate).

By Dan O'Neill
Assistant Arts Editor

They have arrived. Apparently they've been gone too long, and now they're back, very back. America's polyester-gowned pop icons, the Brady Bunch, make their encore film appearance in *A Very Brady Sequel*, which opens nationally today.

Beginning with the television series, which originally ran from 1969 to 1974 and aired a total of 117 episodes, the overly genial family has amassed a loyal following spanning all ages. The 27 year love affair didn't end with last year's *The Brady Bunch Movie*.

For the second outing, the entire original cast returns to their familiar roles, with one notable addition to stir things up. Mrs. Brady's first husband Roy (Tim

Matheson) appears out of the blue to ruffle the feathers of their seemingly idyllic family bliss.

Determined to save the family from this upsetting turn of events, Mike (Gary Cole), Carol (Shelley Long) and the kids travel to Hawaii, which serves as the backdrop for their series of misadventures with contemporary society.

To add a new twist to its predecessor, the show's creator, Sherwood Schwartz, co-produces and Arlene Sanford makes her film directorial debut with the sequel. Her previous credits

include directing the hit television shows "Friends" and "The Wonder Years."

In a press release, co-producer Schwartz comments on the differences between the '70s and '90s Brady family, "The attitude is different... there's no point in doing a feature length movie in the same way we did it in television, so we made a determination to play it over the top. It's not really a satire but an affectionate kidding of the original, without harming the characters."

Despite the attitude change, the distinct Brady look refused to die with the times.

Filmmakers emphasized a strict attention to detail, faithful to the television series, providing a humorous contrast between the outrageous—yet orderly—Brady world and the real '90s world.

"Wherever possible, we used colors definitely not found in nature," said costume designer Rosanna Norton of the exaggerated wardrobes.

If you're waiting for critical opinion before making the trip to the theaters, Ru Paul, who reprises his role as Jan's guidance counselor, gives his always modest opinion of the film, "It's the feel good film of the year. I laughed; I cried; it's better than 'Cats!'"

Andrew Lloyd Weber is green with envy. Look for Brady on Broadway coming to a stage near you.

Student tickets for Louisville game to be distributed Monday morning

By Chris Easterling
Sports Editor

Student ticket distribution for the Louisville football game begins at 9 a.m. Monday at the ticket windows in front of Memorial Coliseum.

The Cats will kickoff their season at Commonwealth Stadium against their archrivals on Saturday, Aug. 31, at 6:30 p.m. ESPN2 will televise the game live nationally.

Students can buy tickets at the same location until 4 p.m. each day next week. UK Director of Administrative Services Rodney Seales said "approximately 10,000 tickets" will be set aside for student distribution.

For the first time in school his-

tory, it will cost UK students \$5 for a football ticket. Prior to this season, students received their tickets free; however, they did have to pay for their men's basketball tickets.

In order to receive a ticket, students must present their UK ID and the \$5 fee to the person at the ticket window.

Students must also be full-time (12 credit hours undergraduate, nine hours graduate). The ID will be scanned to make sure the individual is a full-time student. They will then give the student their ticket.

Students are permitted to buy no more than two tickets each. If you want to sit next to someone, you can bring their ID and purchase two tickets.

Last year's game against the Cardinals was the second largest crowd in the history of Commonwealth Stadium, as 58,967 watched U of L gain its first-ever win in the series, 13-10.

In 1994, the largest crowd in the history of the stadium, 59,162, came out to watch UK top the Cards 20-14, in the first meeting between the two intrastate rivals in 70 years.

Students camped out the night before the first ticket distribution for the 1994 game, forcing UK officials to distribute control cards so that people could go home and not lose their spot in line.

Stiles said that the 1994 game against U of L was sold out by the Wednesday before the game. Last year, a few students started to line up around the windows at about 6 a.m., but the numbers were down from the previous year. In fact, there were still tickets available on game day,

although the game was eventually a sellout.

Stiles said students have never bought all the available tickets through distribution. He said that generally students buy "about 3,000 through distribution, the rest sell as guest tickets."

Guest tickets, if there are any available after Monday's distribution, will go on sale Tuesday. Sideline seats cost \$20, endzone seats cost \$16.

The UK Ticket Office has also announced that tickets are available for all five road football games this year. Students can inquire about away tickets by calling 257-1818.

Tickets for the Cincinnati game on Sept. 7 will cost \$14 and for the Sept. 28 Florida game, \$20.

The last three games — at Alabama on Oct. 5, LSU on Oct. 19 and Tennessee on Nov. 23 — will each cost \$22 a ticket.

White Zombie takes turn for the worse

By Robert Duffy
Arts Editor

You know, sometimes you should just leave well enough alone. Too bad White Zombie and the star studded line-up of remixers who put together *Supersexy Swingin' Sounds* didn't follow this advice.

Supersexy Swingin' Sounds is an 11-song disaster featuring new mixes of the tracks off of the Zombies' previous album, *Astro-Creep: 2000 Songs of Love, Destruction and Other Synthetic Delusions of the Electric Head*.

I bet you're thinking that since *Astro-Creep* was a pretty good album, that an album dedicated to remixes would be just as sweet sounding. Wrong, wrong, wrong. These new remixes are terribly hard to swallow.

Granted, there are some people who have found White Zombie's music terribly annoying from the beginning. If you're one of these people, this album may very well make you want to bang yourself. If, however, you are one of the 2 million plus people who bought *Astro-Creep* and enjoyed it, *Supersexy Swingin' Sounds* may just turn your stomach.

I'll admit, I thought *Astro-Creep* was a very solid album, but

when listening to my favorite songs such as "More Human Than Human" and "Super-Charger Heaven" get the remix mode. I question why I ever liked this band.

I've gone over this album with a fine-toothed comb over and over again, trying my hardest to find a halfway decent song on it. I just cannot do it. I just cannot find one good song on an album.

The only small (and I mean small) interesting thing on this album is the name of the songs: "Grease Paint and Monkey Brains (Sin Cones of Suburbia Mix)," "El Phantasmio and the Chicken-Ran Blast-O-Rama (Wine, Women and Song Mix)" and "Electric Head Pt. 1 (Satan In High Heels Mix)" are some titles that bring a smile to your face. Unfortunately, when you hear these songs, a smile may not be the only thing coming from your mouth.

So why did the Zombies put out this album? The money? The attention? Self promotion? No explanation that they give could possibly make up for the torture that this album puts you through. Stay away from it, unless you're into that self-imposed torture stuff.

Way to go, White Zombie.



MUSIC REVIEW

'Supersexy Swingin' Sounds'
White Zombie
(Geffen)
RATINGS
★★★★ Excellent
★★★★ Good
★★★ Fair
★ Poor

Cats want more from less in '96

By Jay G. Tate
Staff Writer

Less is more.

So says head coach Fran Ralston-Flory about the 1996 UK volleyball squad.

Less refers to the graduation losses of All-Southeastern Conference performers Molly Dreisbach and Mara Eglitis, who together contributed to nearly 50 percent of the team's offensive output last year on a team that finished 10-18 overall, 7-7 in the SEC.

More refers to the gains the team has made in making up for that loss.

"Losing players like Molly and Mara is certainly not a good thing," Ralston-Flory conceded. "But their departure allows us to expand our game plan and include more players in our offense — a move that gives us a more balanced attack."

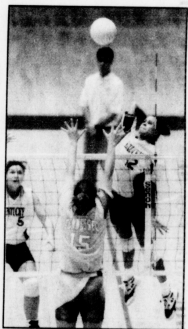
And including players is exactly what Ralston-Flory is doing. In fact, with so many players to choose from, he said it will be difficult to nail down the starting lineup.

"At this point, Gina Heustis is the only for-sure starter," Ralston-Flory said. "After that, each position is up-for-grabs."

Heustis, a senior outside hitter from Louisville, had a solid 1995 season — smashing 3.3 kills per game and playing in 101 games, second — most on last year's team. In addition to Heustis, junior outside hitter Cynthia Dozier figures to be in the mix for a starting position as well. She returns from last season in which, despite limited playing time, she averaged 3.3 kills per game.

For the 1996 season, the coaching staff decided to employ a new recruiting philosophy. Rather than recruit the pure athletes as they had in the past, the staff instead pursued players with more specialized skills.

"We wanted girls that really



File photo

SPIKED Junior Cynthia Dozier will be looked upon as key offensive threat for the UK volleyball team.

understood the game of volleyball," Ralston-Flory said. "We were able to recruit four players who have both athleticism and a strong background in the fundamentals of this sport."

Perhaps most indicative of that new philosophy is freshman Jaclyn Homan of St. Henry, Ohio. Homan had an impressive high school career that culminated with an undefeated squad her senior year that didn't surrender a game the entire season, a seemingly impossible feat.

A team wins a volleyball match when they are the first to win three games, similar to the game-set relationship in tennis.

When considering the 1996 team, it could be labeled a "rebirth," a year that will thrust several young and untested players into key roles.

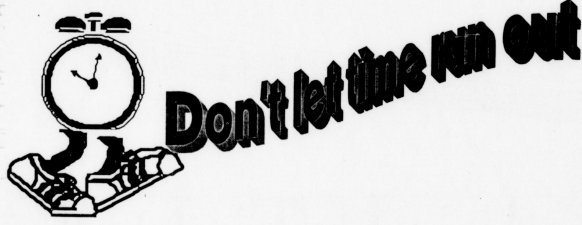
However, the year will be a birth of other sorts as well — Ralston-Flory is due to give birth on Oct. 23. Although the coach is excited about the newest addition to the family, she isn't intending to let it get in the way of her coaching.

"I am going to continue to coach as long as I possibly can," said the former All-Southwest Conference player at Texas. "After she's born, I am going back with the team — she can sit in the stands and watch the matches with her daddy."

Classes From PAGE A10

Main table containing flight class schedules with columns for flight number, time, frequency, and destination. Includes sub-sections for 'From PAGE A10' and 'To PAGE A11'.

Table with multiple columns containing student names, IDs, and course information. Includes a large section of 'WAR' text on the right side of the page.



DON'T walk.....RUN TO THE CAREER CENTER
201 Mathews Building
DON'T WRITE.....PHONE 257-2746
DON'T dogpaddle.....SURF AT
http://www.uky.edu/CAREERCENTER

Bring this ad to the Career Center ASAP for your FREE career starter pack.*
*SUPPLY LIMITED



WAR HAS BEEN DECLARED!! ON TEXTBOOK PRICES!!

Joe Student Wildcat Correspondent
The newest textbook store, WILDCAT TEXTBOOKS (located in South Hill Station at the corner of South Upper and Bolivar Streets), has recently muscled their way into town. Shortly after issuing a declaration of war on textbook prices, WILDCAT TEXTBOOKS guaranteed the lowest prices on textbooks. WILDCAT TEXTBOOKS has single-handedly forced textbook prices back to the cold, wet trenches and fox-

holes of the textbook battlefield. WILDCAT TEXTBOOKS has issued a call-to-arms to all UK and LCC students to join in the price-busting combat and keep the enemy, high prices, at bay. Those brave soldiers wishing to enlist in the good fight are urged to do so at these times: M-F 8am-10pm Sat. 9am-6pm Sun. 2pm-6pm Parking on side of Building. For additional information call 225-7771.

Map showing the location of Wildcat Textbooks at the University of Kentucky campus, near Limestone and South Hill Station. Includes contact information: 225-7771, South Hill Station.

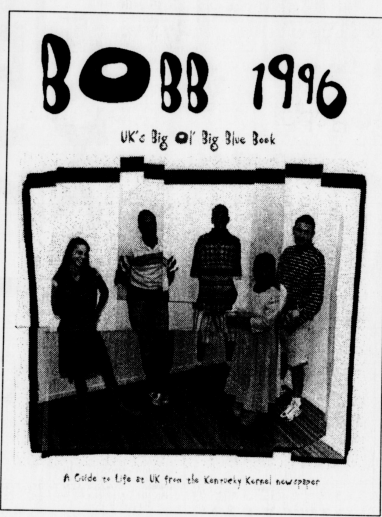
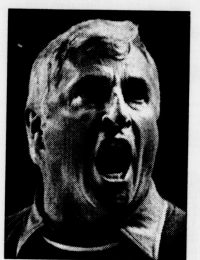
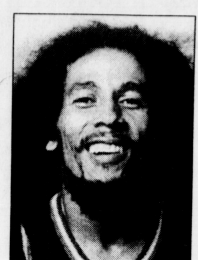
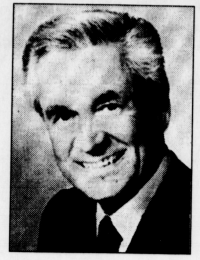
Bob Ross, Bob Evans, Bob Dulan, Robert Goldsmith

John Bobbitt, Bob Costas, Bob Hope, Bob Geldof, Bob Ubanks, Bobby Hurley, Bob Cratchett, Bob Dole, Bobby Kennedy, Sideshow Bob, Bobby Allison, Microsoft Bob, Bob Marley, Bob Villa, Bobby Cremins, Bobby McFerrin, Bobby

Bob Ross, Bob Evans, Bob Dylan, Bobcat Goldwaith, Bob Saget, Bob Newhart, Bob Seger, Bobby Brown, Bob Uecker, Bob Orr, Bobby Fischer,

Rahal, Bob Mould, Bob Feller, Bobby Knight, Bob & Tom, Bobby's World, Bob Barker,

0150PM
0150PM
0150PM
0150PM
0150PM
0150PM
0150PM
0150PM
0150PM
0150PM
0950AM
1150AM
0150PM
0145PM
1215PM
0250PM
1250PM
1150AM
1250PM
1045AM
1215PM
0950AM
0950AM
0950AM
0350PM
1050AM
0250PM
0950AM
1250PM
0950AM
0150PM
0150PM
1215PM
1050AM
1050AM
1150AM
1250PM
0950PM
1150AM
0950AM
0950AM
1045AM
0445PM
0350PM
0350PM
1045AM
1150AM
0250PM
0250PM
0950PM
0215PM
0515PM
0150PM
0430PM
0630PM
0950AM
0645PM
0415PM
0630PM
0530PM
0630PM
0620PM
1150AM
0715PM
0150PM
0250PM
0445PM
0350PM
0950AM
1050AM
0130PM
0130PM
0150PM
0150PM
0810PM
0450PM
1250PM
0915AM



**Only one
'Bob' is
coming to
campus this
Friday**

**KENTUCKY
Kernel**

1 ^{FREE} on US!

Call **Lextran** for information about the Getaround Program and for your free roundtrip ride good with student ID.

Call today
253-4636
Limited supply available.

the **LEXTRAN** student
Getaround card



\$50 Just

per semester

OR

\$15

per month

SAVE MONEY!

MONTHLY PASSES \$30 VALUE...
\$15 for students with valid ID! 4 monthly passes would cost \$120...WITH THE GETAROUND SEMESTER PASS YOU PAY ONLY \$50...SAVE \$70.

Save Money and Getaround!

Getaround

on a Lextran bus to:

- University of Kentucky
- Malls
- Selected movie theaters
- Downtown & more...

Save your tread
No parking hassles
Kick back on the bus
It's *reliable* - so don't worry be happy
half-hour service
It's greener for the environment
Save moola on gas

For information and bus schedules call:

253-4636

How often does the bus run?
When will the bus be there?
Who do I talk to?
Where can I go?

04002
04003
04004
04005
04006
04007
04008
04009
04010
04011
04012
04013
04014
04015
04016
04017
04018
04019
04020
04021
04022
04023
04024
04025
04026
04027
04028
04029
04030
04031
04032
04033
04034
04035
04036
04037
04038
04039
04040
04041
04042
04043
04044
04045
04046
04047
04048
04049
04050
04051
04052
04053
04054
04055
04056
04057
04058
04059
04060
04061
04062
04063
04064
04065
04066
04067
04068
04069
04070
04071
04072
04073
04074
04075
04076
04077
04078
04079
04080
04081
04082
04083
04084
04085
04086
04087
04088
04089
04090
04091
04092
04093
04094
04095
04096
04097
04098
04099
04100
04101
04102
04103
04104
04105
04106
04107
04108
04109
04110
04111
04112
04113
04114
04115
04116
04117
04118
04119
04120
04121
04122
04123
04124
04125
04126
04127
04128
04129
04130
04131
04132
04133
04134
04135
04136
04137
04138
04139
04140
04141
04142
04143
04144
04145
04146
04147
04148
04149
04150
04151
04152
04153
04154
04155
04156
04157
04158
04159
04160
04161
04162
04163
04164
04165
04166
04167
04168
04169
04170
04171
04172
04173
04174
04175
04176
04177
04178
04179
04180
04181
04182
04183
04184
04185
04186
04187
04188
04189
04190
04191
04192
04193
04194
04195
04196
04197
04198
04199
04200

Int
U
\$11
Lee
Lexi
600
606
HIP
HEA
SPOR
The
189 Moon
Advertis
the Kern
Call 2

Table with columns for item number, description, price, and other details. Includes items like 04728 PSY 100 042 3' 4.0 MW 1100AM 1150AM 0250PM.

Table with columns for item number, description, price, and other details. Includes items like 04730 PSY 100 044 7' 4.0 MW 1100AM 1150AM 0250PM.

Table with columns for item number, description, price, and other details. Includes items like 04732 PSY 100 047 8' 4.0 MW 1100AM 1150AM 0250PM.

Table with columns for item number, description, price, and other details. Includes items like 04734 PSY 100 048 1' 4.0 MW 1100AM 1150AM 0250PM.

White's Mattress Woodhill Center behind Thornton's NOW OPEN! Simple Message • We Are The Factory (No Middle Man Expenses) DARE TO COMPARE—No one exceeds our QUALITY, COMFORT, AND PRICE VALUE RATIO!

Advertise in the Kernel. Large graphic with a kernel and the text 'Advertise in the Kernel.'

Table with columns for item number, description, price, and other details. Includes items like 04736 PSY 215 001 8' 4.0 TR 1100AM 1215PM 0450PM.

Table with columns for item number, description, price, and other details. Includes items like 04738 PSY 100 051 13' 4.0 MW 1100AM 1150AM 0250PM.

TV/VCR Cart Swivel Top allows TV viewing Door Storage for Tapes/CD's \$57.00 Computer Desk w/Hutch 48 x 23 x 66 \$157.00

Large graphic with the word 'KERNEL' in a stylized font.

Table with columns for item number, description, price, and other details. Includes items like 04740 PSY 100 054 3' 4.0 MW 1100AM 1150AM 0250PM.

Table with columns for item number, description, price, and other details. Includes items like 04742 PSY 100 057 17' 4.0 TR 1100AM 1150AM 0250PM.

Contemporary Metal Futon Multi-purpose futon saves space, converts from sofa to a full size bed \$247.00 Wildcat Blue UK cover with 2 logo pillows \$97.00

Large graphic with the word 'KERNEL' in a stylized font.

Table with columns for item number, description, price, and other details. Includes items like 04744 PSY 100 061 1' 4.0 MW 1100AM 1150AM 0250PM.

Table with columns for item number, description, price, and other details. Includes items like 04746 PSY 100 064 6' 4.0 MW 1100AM 1150AM 0250PM.

Twin size headboards Pine or Maple Finish Twin/Full Bed Frames \$24.00 Compare Our Lowest Prices Factory Direct To You WE SAVE YOU MONEY • YOU GET A GREAT NIGHT'S SLEEP! Woodhill Center behind Thornton's 2350 Woodhill Dr. Lexington, KY 40509 606-266-BEDS (2337)

Summer may be over, but your tan doesn't have to end! 12 VISITS FOR \$20! (with student i.d.) Ultimate Tan 266-8848 3101 Richmond Rd. (next to the new Kroger)

WOLFEY TAVERN & GRILL LAUGH TRACK LIVE EVERY TUESDAY. Shake Your Body On Disco Dance Party Wednesday! Thru Fri & Sat THUNDER and the PLAID RABBITS BRUCE LYONS on the Patio Every Sunday Night Great Sunday Brunch • Drink & Food Specials • LIVE MUSIC 333 S. LIMESTONE • 254-5000 • LEX, KY

Large graphic with the word 'KERNEL' in a stylized font.

Table of course offerings with columns for course number, section, credits, prerequisites, and instructor.

COURSES WITH CONTROLLED ENROLLMENT

Table of course offerings with controlled enrollment, including course number, section, credits, prerequisites, and instructor.

COURSES FOR STUDENTS IN SPECIAL PROGRAMS

Table of course offerings for students in special programs, including course number, section, credits, prerequisites, and instructor.

Kentucky Trade Computers advertisement with contact information and store location.

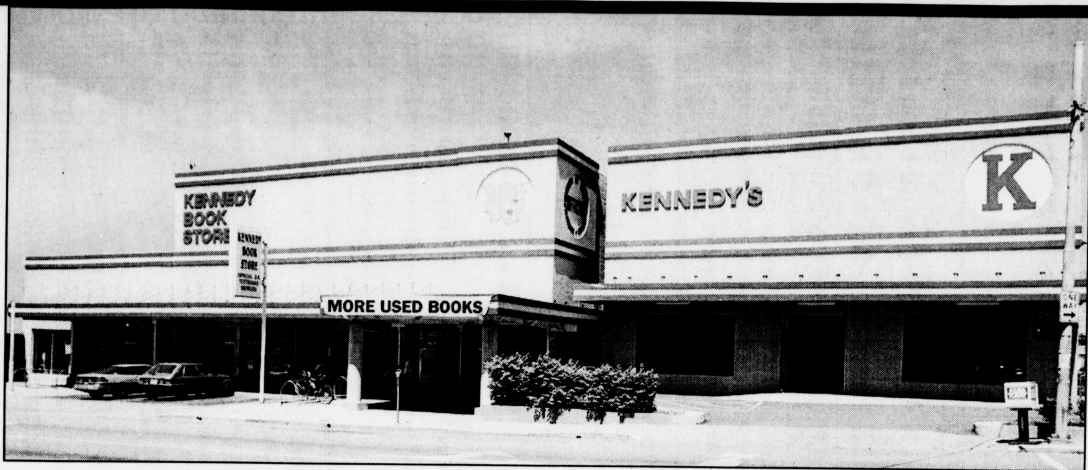
LSAT Classes start Sept. 3 advertisement for Kaplan.

Talk is cheap advertisement for ConQuest.

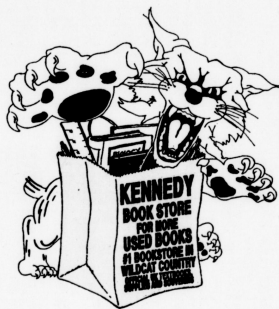
Stretch your advertising dollar advertisement featuring a \$100 bill.

UKSA Committee Member!!! advertisement for the Student Government.

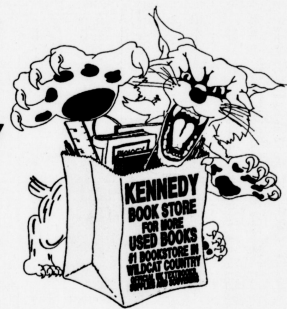
Prepaid Long Distance Telephone Card advertisement for Kennedy Book Store.



**OFFICIAL UNIVERSITY OF KENTUCKY
TEXTBOOKS, SUPPLIES, CLOTHING
AND SOUVENIRS**



**MORE
STUDENTS,
BY FAR,
CHOOSE**



KENNEDY BOOK STORE

"We've got the corner on savings."

**Corner of Limestone & Euclid
Lexington, KY 40508
In Lexington: 252-0331
Toll Free: 888-860-CATS
<http://www.kennedys.com>**

