



Welcome to the CHATTAHOOCHEE National Forest



Brantstown Bald Visitor Center

SCENIC AND HISTORICAL AREAS

The Chattahoochee National Forest is known for its many scenic and historical areas which delight photographers, botanists, and sight-seers. Among these areas are:

Blood Mountain Archeological Area - Site of a Cherokee Indian battle, found by following the Appalachian Trail to the top of Blood Mountain.

Chattahoochee Overlook - A scenic view of Blood Mountain Cover, located off Georgia 62, 12 miles north of Dalton, Georgia.

Cohutta Overlook - A magnificent view of the Blue Ridge Mountains, located just off Georgia 52 near Fort Mountain State Park.

Coleman River - A stand of large, old growth timber grows alongside a stream which winds its way through high lookouts. Take US 76 west from Clayton for 8 miles. Turn right on unnumbered, paved road for 4 miles. Turn left on Forest Service Road 70 for 1 mile.

High Shoals - Five waterfalls, luxuriant banks of rhododendron and laurel, and sparkling mountain streams highlight this 170-acre scenic area. Take Georgia 75 north from Cleveland for 17 miles. Turn right on Forest Service Road 283 for 1 1/2 miles to the start of the trail at Blue Hole Falls.

Seosee Cove - The 175-acre scenic area of pine hardwoods is set aside as a memorial to Arthur Woody, an early Forest Service Ranger. Rare and beautiful flowers abound in the area. Located off Georgia 180 between Lake Winfield Scott and Vogel State Park.

Track Rock Archeological Area - A 52-acre area with preserved petroglyphs of ancient Indian origin. These carvings resemble animal and bird tracks. Take US 181/229 south from Blountville for 3 miles. Turn left on Georgia 2322 (Town Creek Road) and follow signs for 5 miles.

Chattahoochee Wild and Scenic River - One of the longest free-flowing rivers in the southeastern United States. The Chattahoochee is still relatively primitive and undeveloped. Located in northeast Georgia, the river hosts thousands of canoes, kayaks, and rafts each year. Commercial outfitters conduct trips for novice floaters. A separate map of the river is available for purchase.

WILDERNESS AREAS

Cohutta Wilderness - A 34,100-acre wilderness in northwest Georgia. Contains two of the best wild trout streams in Georgia plus deer, wild boar, and bear. A separate map of the Cohutta Wilderness is available for purchase.

Ellicott Rock Wilderness - 181 acres of this wilderness area are located in extreme northeast Georgia. Information on this area can be obtained from Francis Marion-Sumter N.F., 1801 Assembly Street, Columbus, SC 29201.

This Guide will help you enjoy the Chattahoochee National Forest. It describes and directs you to developed camping sites, picnicking areas, and to points of interest and special beauty.

Most of the developed recreation areas on the Chattahoochee are open from late spring to early fall. A few selected areas are kept open year long or are opened for short times during fishing and hunting seasons. Contact the appropriate Ranger District office listed in this guide to receive specific information on opening and closing dates.

A fee is charged for use of many developed recreation areas. The money collected is used to help pay the costs of operating the recreation areas. Twenty-five percent of the money collected is returned directly to the counties in which Forest Service land is located.

We hope this guide will increase your awareness of the many opportunities awaiting you on the Chattahoochee National Forest. We ask that while you're enjoying your stay you remember your responsibility to leave the forest clean and safe from fire.



Cohutta Wilderness



damage caused by your fire. Remember to leave your fire "dead out."

Off-Road Vehicles - ORVs are permitted on most forest roads and trails unless otherwise posted. Vehicle drivers must be licensed and conform to all state laws. Check with the local Forest Service office before using an ORV on the forest.

Horses - Horse use is prohibited on the Appalachian Trail and on several trails within the Cohutta Wilderness. Check with the local Forest Service office before taking horses on any trail. Caution is urged on all trails because narrow clearing widths and steep grades often make horseback riding dangerous.

Hiking - There are several hundred miles of foot trails on the Chattahoochee National Forest. These offer experiences for everyone from the expert backpacker to the novice hiker. More information can be found in the Trail Guide to the Chattahoochee-Oconee National Forests.

RECREATION OPPORTUNITIES

Camping - Primitive camping is allowed anywhere on the Chattahoochee National Forest unless otherwise posted. There is no charge for primitive camping; no permit is required, and you may camp in dispersed areas year-round.

Fires - No permit is needed to build a campfire. However, you may only use dead and down wood and you are responsible for any



Hunting and Fishing - Hunting and fishing are allowed only under state laws. For licenses, regulations, and season dates, check with the Georgia Department of Natural Resources, Game and Fish Division, 270 Washington Street, SW, Atlanta, GA 30334, 404-656-3530.

DIRECTIONS TO RECREATION AREAS

Hidden Creek (1) - Take Georgia 156 south-west from Calhoun for 11 miles. Turn right on Forest Service Road 355 for 5 miles.

Keowee Falls (2) - Take Georgia 136 east from Lafayette for 13 1/2 miles (past Vidalsville). Turn south on Forest Service Road 203 for about 6 miles to the entrance road.

The Pocket (3) - Take Georgia 136 east from Lafayette for 13 1/2 miles (past Vidalsville). Turn south on Forest Service Road 203 for 8 miles.

Andrews Cove (4) - Take Georgia 75 north from Cleveland for 14 miles.

Anna Ruby Falls (5) - Take Georgia 75 north from Helen for 1 mile to Robertstown. Turn right on Georgia 356 to entrance of Unicoi State Park. Follow signs through park for 3 1/2 miles to parking area.

Barnes Creek (6) - Take US 411 north from Chatsworth for 4 miles. Turn right at traffic

light in Eton and follow Forest Service Road 18 east for 10 miles. Turn left on Forest Service Road 68 for 4 miles.

Brantstown Bald Visitor Center (7) - Take US 191/29 south from Blairville for 8 miles. Turn left or east on Georgia 180 for 5 miles. Then turn left (or north) on Georgia 86 for 3 miles.

Cooper Creek (8) - Take Georgia 60 north from Dahlonega for 24 miles. Turn right on Forest Service Road 236 for 3 miles.

Deep Hole (9) - Take Georgia 60 north from Dahlonega for 27 miles.

DeSoto Falls (10) - Take US 129 north from Cleveland for 15 miles.

Dockery Lake (11) - Take Georgia 60 north from Dahlonega for 12 miles. Turn right on Forest Service Road 654 for 1 mile.

Fern Springs (12) - Take US 123 north from Cornelia for 6 miles.

Frank Cross (13) - Take Georgia 60 north from Dahlonega for 27 miles. Turn left on Forest Service Road 69 for 5 miles.

Lake Blue Ridge (14) - Take US 76 east from Blue Ridge for 2 1/2 miles. Turn south on Forest Service Road 605 for 2 miles.

Lake Chatugee (15) - Take US 76 west from Hiawassee for 2 miles. Turn left on Georgia 288 for 1 mile.

Lake Conasauga (16) - Take US 411 north from Chatsworth for 7 miles. Turn right at the traffic light in Eton and follow Forest Service Road 18 east for 10 miles. Turn left on Forest Service Road 78 for 10 miles.

Lake Russell (17) - Take US 123 north from Cornelia for 1 1/2 miles. Turn right on Forest Service Road 59 and go 2 miles to the entrance.

Lake Winfield Scott (18) - Take US 19 south from Blairville for 10 miles. Turn west on Georgia 190 for 7 miles.

Morganton Point (19) - Take US 76 east from Blue Ridge for 6 miles. Turn right on paved County Road 616 for 1 mile.

Mulky (20) - Take Georgia 60 north from Dahlonega for 26 miles. Turn right on Forest

DEPOSITORY
GOVERNMENT PUBLICATIONS DEPT.
NOV 2 1983
UNIVERSITY OF KENTUCKY
LIBRARIES

Service Road 4 for 5 miles.

Panther Creek (21) - Take US 441/23 south from Talula Falls for 3 miles.

Rabun Beach (22) - Take US 441/23 south from Clayton for 7 miles. Turn west on County Road 10 for 5 miles.

Talulah River (23) - Take US 76 west from Clayton for 8 miles. Turn right on unnumbered, paved road for 4 miles. Turn left on Forest Service Road 70 for 1 mile.

Tate Branch (24) - Take US 76 west from Clayton for 8 miles. Turn right on unnumbered, paved road for 7 miles. Turn left on Forest Service Road 70 for 4 miles.

Warwoman Dam (25) - Take County Road 5 east from Clayton for 3 miles.

Waters Creek (26) - Take US 19 north from Dahlonega for 12 miles. Turn left on Forest Service Road 34 for 1 mile.

Woody Gap (27) - Take Georgia 60 north from Dahlonega for 14 miles.

SAFETY TIPS

- Always plan when family or friends so someone will know where you are and who to contact should you fail to arrive home as planned.
- Boil or purify all water before drinking.
- Carry a first aid kit. Know how to treat minor injuries. Be aware of where the closest hospital is.
- Wear proper clothing for the season and terrain. A cold, wet, and exhausted individual can experience potentially fatal hypothermia with the air temperature as high as 41F.
- Do not climb on or around waterfalls. People have been killed while climbing around waterfalls.
- Keep glass away from swimming areas.
- Never leave your campfire unattended.

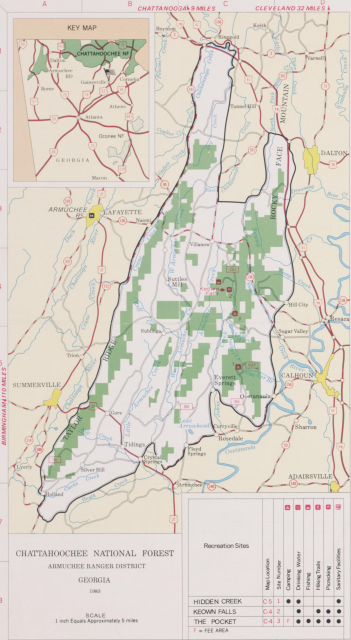
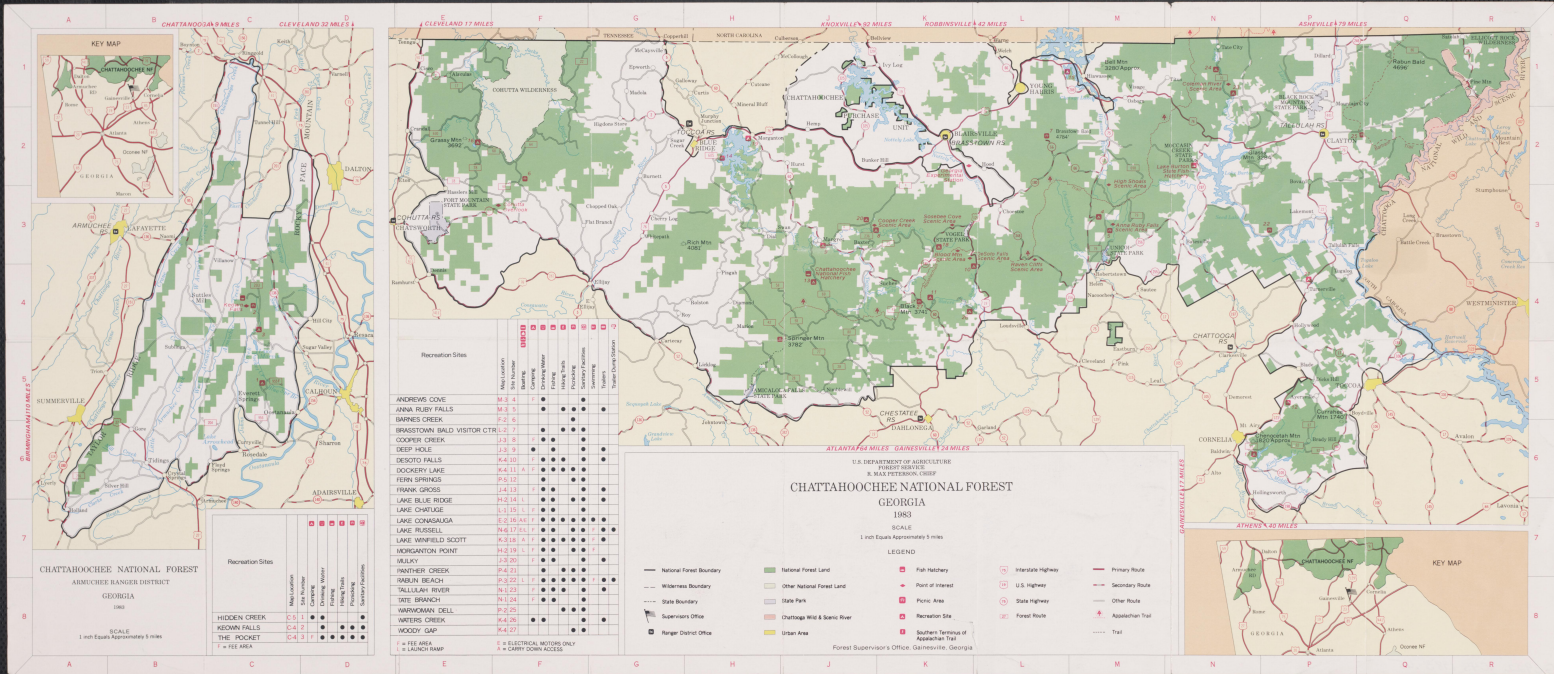
GEORGIA
National Forest
3 0425 0288218 0

For further information write or call these Forest Service offices.

Supervisors Office 601 Broad Street Gainesville, GA 30601 404-536-0541	Chestate District 200 West Main Dalton, GA 30533 404-864-6172
Annahme District 701 Foster Blvd. Lafayette, GA 30323 404-638-1085	Cohutta District 401 Old Elgin Road Chatsworth, GA 30705 404-695-6736
Brantstown District Highway 181/29 South Blairville, GA 30512 404-745-6928	Talulah District North Main Street Clayton, GA 30525 404-762-3320
Chatugee District Burton Road Cleveland, GA 30533 404-864-6173	Keowee District Route 2, Box 5088 Blue Ridge, GA 30513 404-622-3031

The facilities, programs, and areas of the Forest Service and the National Forests are for the use and enjoyment of all people. Discrimination against any person because of race, color, national origin, sex, age, religion, or physical condition is strictly against the policy of the USDA Forest Service, and should be reported to the Secretary of Agriculture, Washington, D.C. 20250.

G 3922, 045 1983 45 1983



RECREATION SITES	ACRES	FACILITIES									
		RESTROOMS	DRINKING WATER	CAMPING	HUNTING	FISHING	BOATING	SWIMMING	TRAIL	VIEWING	OTHER
ANDREWS COVE	10.4										
JANNA RUBY FALLS	10.5										
BARKS CREEK	12.6										
BRASSTOWN BALD VISITOR CTR.	12.7										
COOPER CREEK	13.8										
DEEP HOLE	14.8										
DESOTO FALLS	14.10										
DODDERS LAKE	14.11										
FURN SPRINGS	15.12										
FRANK CROSS	14.13										
LAKE CONGAUGA	15.14										
LAKE BLUE RIDGE	16.15										
LAKE CHARLIZE	17.16										
LAKE CONSAUGA	18.17										
LAKE RUSSELL	19.18										
LAKE WINFIELD SCOTT	20.19										
INDIAN HOLLOW POINT	21.20										
MAJURY	22.21										
PANTHER CREEK	23.22										
DEER BEACH	24.23										
FALLS RIVER	25.24										
THE BRANCH	26.25										
WATERMAN DELL	27.26										
WATERS CREEK	28.27										
MOODY GAP	29.28										

CHATTAHOOCHEE NATIONAL FOREST
 GEORGIA
 1983

U.S. DEPARTMENT OF AGRICULTURE
 FOREST SERVICE
 W. MAX PETERSON, CHIEF

SCALE
 1 inch Equals Approximately 3 miles

LEGEND

- National Forest Boundary
- Wilderness Boundary
- State Boundary
- Supervisor's Office
- Ranger District Office
- National Forest Land
- Other National Forest Land
- State Park
- Outage Wild & Scenic River
- Urban Area
- Fish Hatchery
- Point of Interest
- Public Area
- Recreation Site
- Summer Camp of Appalachian Trail
- Interstate Highway
- U.S. Highway
- State Highway
- Forest Road
- Trail
- Primary Route
- Secondary Route
- Other Route
- Appalachian Trail

Forest Supervisor's Office: Gainesville, Georgia

