

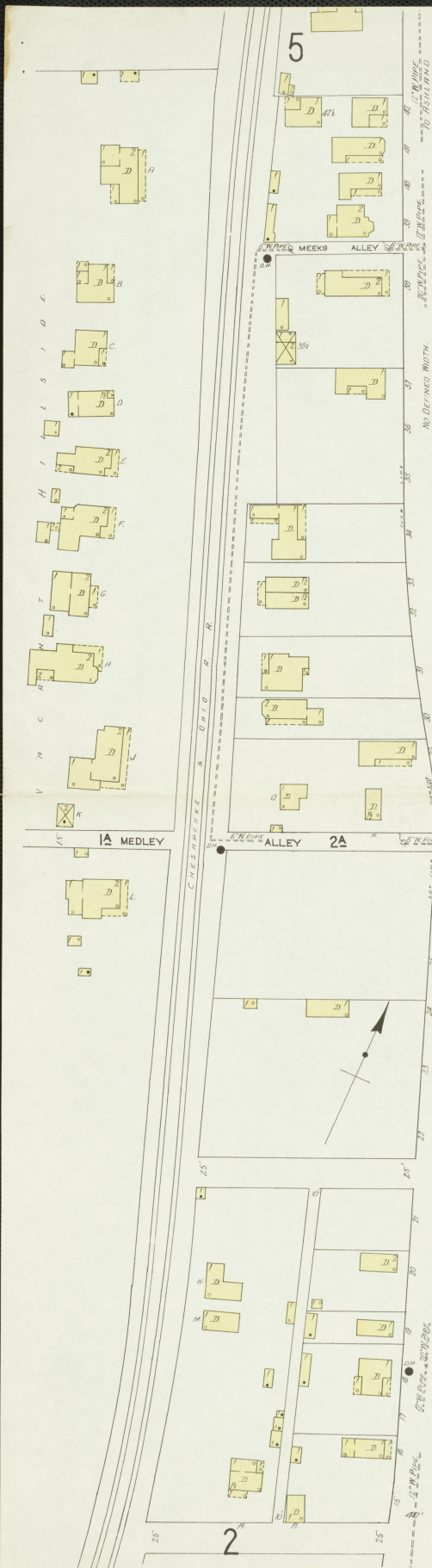
WATER FACILITIES: Water works owned & operated by Catlettsburg, Kenosha & Cerado Water Co. Quantity of direct pressure system...

FIRE DEPT: Volunteer, 35 men paid by year. 1 Athens 500 gal steamer pulled by horses. 1 hose wagon carrying 700 ft hose (pair)...

KEY: Legend for building types and colors. Includes symbols for stable, fire station, and various building materials like brick, stone, and wood.



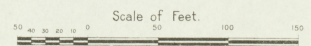
ASHLAND AND CATLETTSBURG TURNPIKE



INDEX.

Table listing streets and their corresponding page numbers. Includes columns for 'STREETS.', 'NUMBER', and 'PAGE'. Lists streets from Ann to York House.

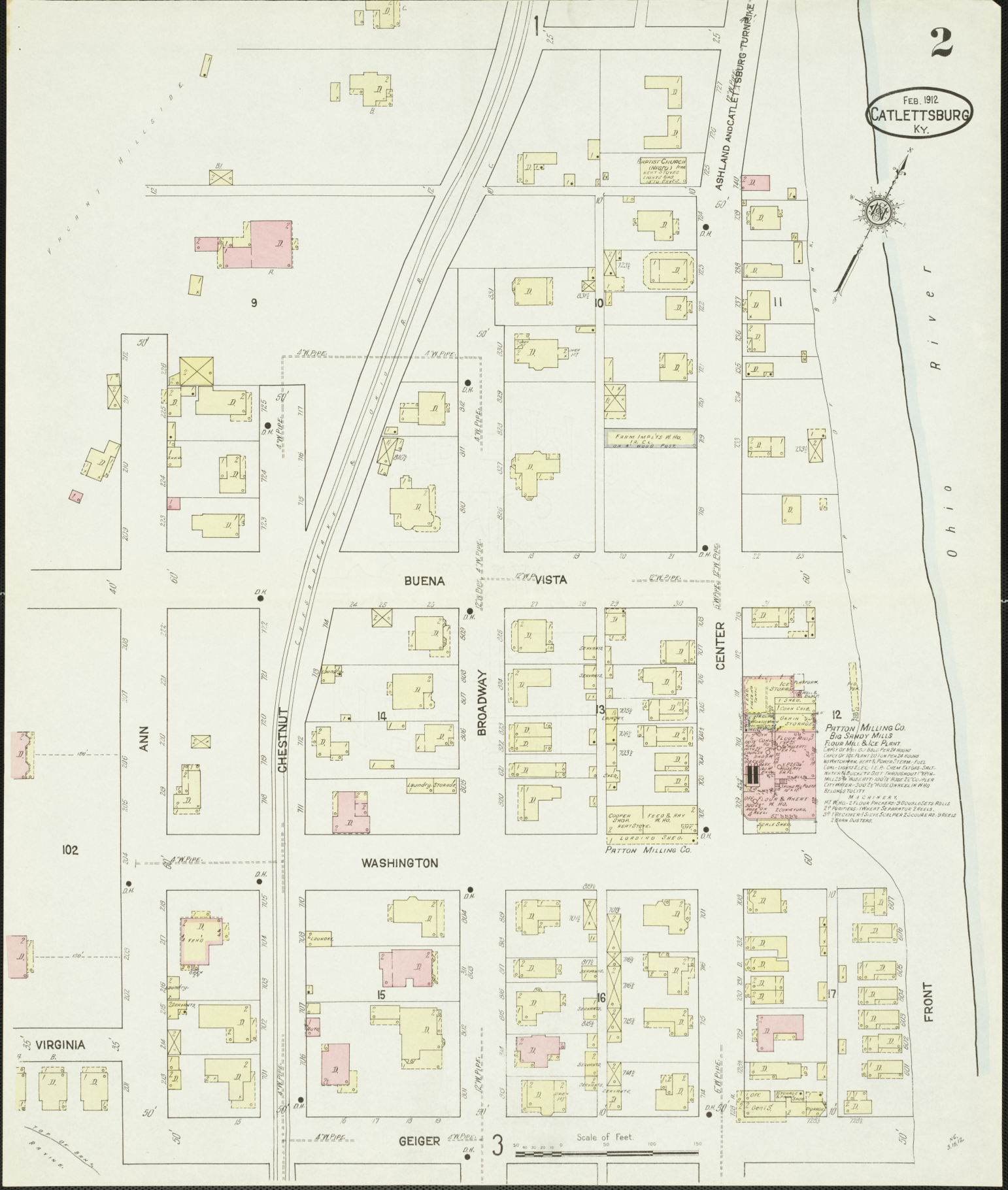
* Indicates only one side of Street shown. NOTE.—House Numbers given are arbitrary.



FEB. 1912
CATLETTSBURG
KY.



River
Ohio



ASHLAND AND CATLETTSBURG TURNPIKE

BUENA

VISTA

ANN

CHESTNUT

BROADWAY

CENTER

WASHINGTON

PATTON MILLING Co.

12
PATTON MILLING Co.
BIG SANDY MILLS
FLOUR MILL & ICE PLANT
Lots of 100, 101, 102, 103, 104, 105, 106, 107, 108, 109, 110, 111, 112, 113, 114, 115, 116, 117, 118, 119, 120, 121, 122, 123, 124, 125, 126, 127, 128, 129, 130, 131, 132, 133, 134, 135, 136, 137, 138, 139, 140, 141, 142, 143, 144, 145, 146, 147, 148, 149, 150, 151, 152, 153, 154, 155, 156, 157, 158, 159, 160, 161, 162, 163, 164, 165, 166, 167, 168, 169, 170, 171, 172, 173, 174, 175, 176, 177, 178, 179, 180, 181, 182, 183, 184, 185, 186, 187, 188, 189, 190, 191, 192, 193, 194, 195, 196, 197, 198, 199, 200, 201, 202, 203, 204, 205, 206, 207, 208, 209, 210, 211, 212, 213, 214, 215, 216, 217, 218, 219, 220, 221, 222, 223, 224, 225, 226, 227, 228, 229, 230, 231, 232, 233, 234, 235, 236, 237, 238, 239, 240, 241, 242, 243, 244, 245, 246, 247, 248, 249, 250, 251, 252, 253, 254, 255, 256, 257, 258, 259, 260, 261, 262, 263, 264, 265, 266, 267, 268, 269, 270, 271, 272, 273, 274, 275, 276, 277, 278, 279, 280, 281, 282, 283, 284, 285, 286, 287, 288, 289, 290, 291, 292, 293, 294, 295, 296, 297, 298, 299, 300, 301, 302, 303, 304, 305, 306, 307, 308, 309, 310, 311, 312, 313, 314, 315, 316, 317, 318, 319, 320, 321, 322, 323, 324, 325, 326, 327, 328, 329, 330, 331, 332, 333, 334, 335, 336, 337, 338, 339, 340, 341, 342, 343, 344, 345, 346, 347, 348, 349, 350, 351, 352, 353, 354, 355, 356, 357, 358, 359, 360, 361, 362, 363, 364, 365, 366, 367, 368, 369, 370, 371, 372, 373, 374, 375, 376, 377, 378, 379, 380, 381, 382, 383, 384, 385, 386, 387, 388, 389, 390, 391, 392, 393, 394, 395, 396, 397, 398, 399, 400, 401, 402, 403, 404, 405, 406, 407, 408, 409, 410, 411, 412, 413, 414, 415, 416, 417, 418, 419, 420, 421, 422, 423, 424, 425, 426, 427, 428, 429, 430, 431, 432, 433, 434, 435, 436, 437, 438, 439, 440, 441, 442, 443, 444, 445, 446, 447, 448, 449, 450, 451, 452, 453, 454, 455, 456, 457, 458, 459, 460, 461, 462, 463, 464, 465, 466, 467, 468, 469, 470, 471, 472, 473, 474, 475, 476, 477, 478, 479, 480, 481, 482, 483, 484, 485, 486, 487, 488, 489, 490, 491, 492, 493, 494, 495, 496, 497, 498, 499, 500, 501, 502, 503, 504, 505, 506, 507, 508, 509, 510, 511, 512, 513, 514, 515, 516, 517, 518, 519, 520, 521, 522, 523, 524, 525, 526, 527, 528, 529, 530, 531, 532, 533, 534, 535, 536, 537, 538, 539, 540, 541, 542, 543, 544, 545, 546, 547, 548, 549, 550, 551, 552, 553, 554, 555, 556, 557, 558, 559, 560, 561, 562, 563, 564, 565, 566, 567, 568, 569, 570, 571, 572, 573, 574, 575, 576, 577, 578, 579, 580, 581, 582, 583, 584, 585, 586, 587, 588, 589, 590, 591, 592, 593, 594, 595, 596, 597, 598, 599, 600, 601, 602, 603, 604, 605, 606, 607, 608, 609, 610, 611, 612, 613, 614, 615, 616, 617, 618, 619, 620, 621, 622, 623, 624, 625, 626, 627, 628, 629, 630, 631, 632, 633, 634, 635, 636, 637, 638, 639, 640, 641, 642, 643, 644, 645, 646, 647, 648, 649, 650, 651, 652, 653, 654, 655, 656, 657, 658, 659, 660, 661, 662, 663, 664, 665, 666, 667, 668, 669, 670, 671, 672, 673, 674, 675, 676, 677, 678, 679, 680, 681, 682, 683, 684, 685, 686, 687, 688, 689, 690, 691, 692, 693, 694, 695, 696, 697, 698, 699, 700, 701, 702, 703, 704, 705, 706, 707, 708, 709, 710, 711, 712, 713, 714, 715, 716, 717, 718, 719, 720, 721, 722, 723, 724, 725, 726, 727, 728, 729, 730, 731, 732, 733, 734, 735, 736, 737, 738, 739, 740, 741, 742, 743, 744, 745, 746, 747, 748, 749, 750, 751, 752, 753, 754, 755, 756, 757, 758, 759, 760, 761, 762, 763, 764, 765, 766, 767, 768, 769, 770, 771, 772, 773, 774, 775, 776, 777, 778, 779, 780, 781, 782, 783, 784, 785, 786, 787, 788, 789, 790, 791, 792, 793, 794, 795, 796, 797, 798, 799, 800, 801, 802, 803, 804, 805, 806, 807, 808, 809, 810, 811, 812, 813, 814, 815, 816, 817, 818, 819, 820, 821, 822, 823, 824, 825, 826, 827, 828, 829, 830, 831, 832, 833, 834, 835, 836, 837, 838, 839, 840, 841, 842, 843, 844, 845, 846, 847, 848, 849, 850, 851, 852, 853, 854, 855, 856, 857, 858, 859, 860, 861, 862, 863, 864, 865, 866, 867, 868, 869, 870, 871, 872, 873, 874, 875, 876, 877, 878, 879, 880, 881, 882, 883, 884, 885, 886, 887, 888, 889, 890, 891, 892, 893, 894, 895, 896, 897, 898, 899, 900, 901, 902, 903, 904, 905, 906, 907, 908, 909, 910, 911, 912, 913, 914, 915, 916, 917, 918, 919, 920, 921, 922, 923, 924, 925, 926, 927, 928, 929, 930, 931, 932, 933, 934, 935, 936, 937, 938, 939, 940, 941, 942, 943, 944, 945, 946, 947, 948, 949, 950, 951, 952, 953, 954, 955, 956, 957, 958, 959, 960, 961, 962, 963, 964, 965, 966, 967, 968, 969, 970, 971, 972, 973, 974, 975, 976, 977, 978, 979, 980, 981, 982, 983, 984, 985, 986, 987, 988, 989, 990, 991, 992, 993, 994, 995, 996, 997, 998, 999, 1000

102

VIRGINIA

GEIGER

3

Scale of Feet.

FRONT

40
3 1/2



O h i o R i v e r

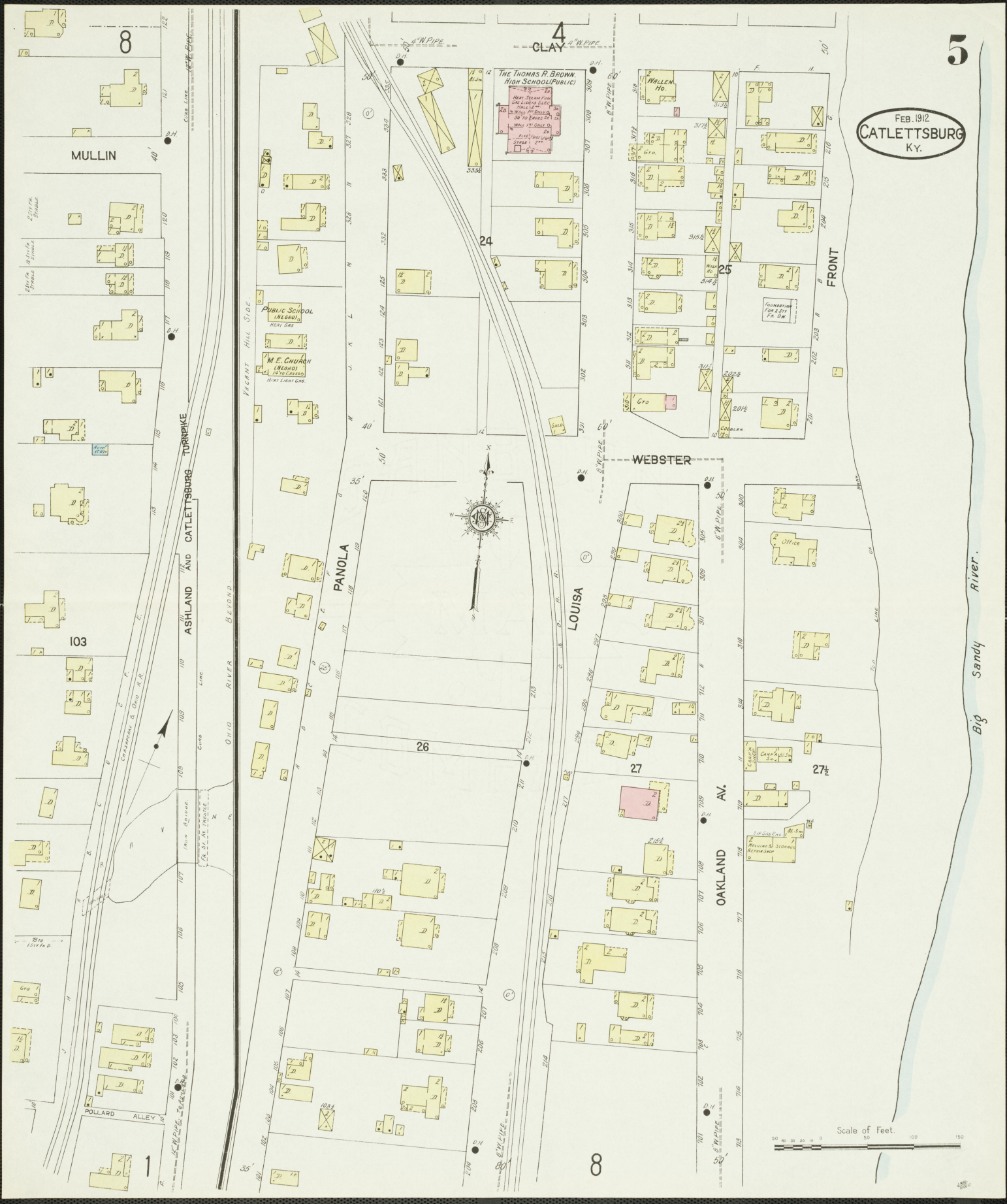
FEB. 1912
CATLETTSBURG
Ky.



B i g S a n d y R i v e r

Scale of Feet.
0 50 100 150

FEB. 1912
CATLETTSBURG
Ky.



Scale of Feet. 0 50 100 150

FEB. 1912
CATLETTSBURG
KY.

6



SPRING

PLUM

109

MOUND

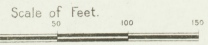
WILLOW

LOUISA

SOUTH HAMPTON

OAKLAND AV.

Scale of Feet.



7

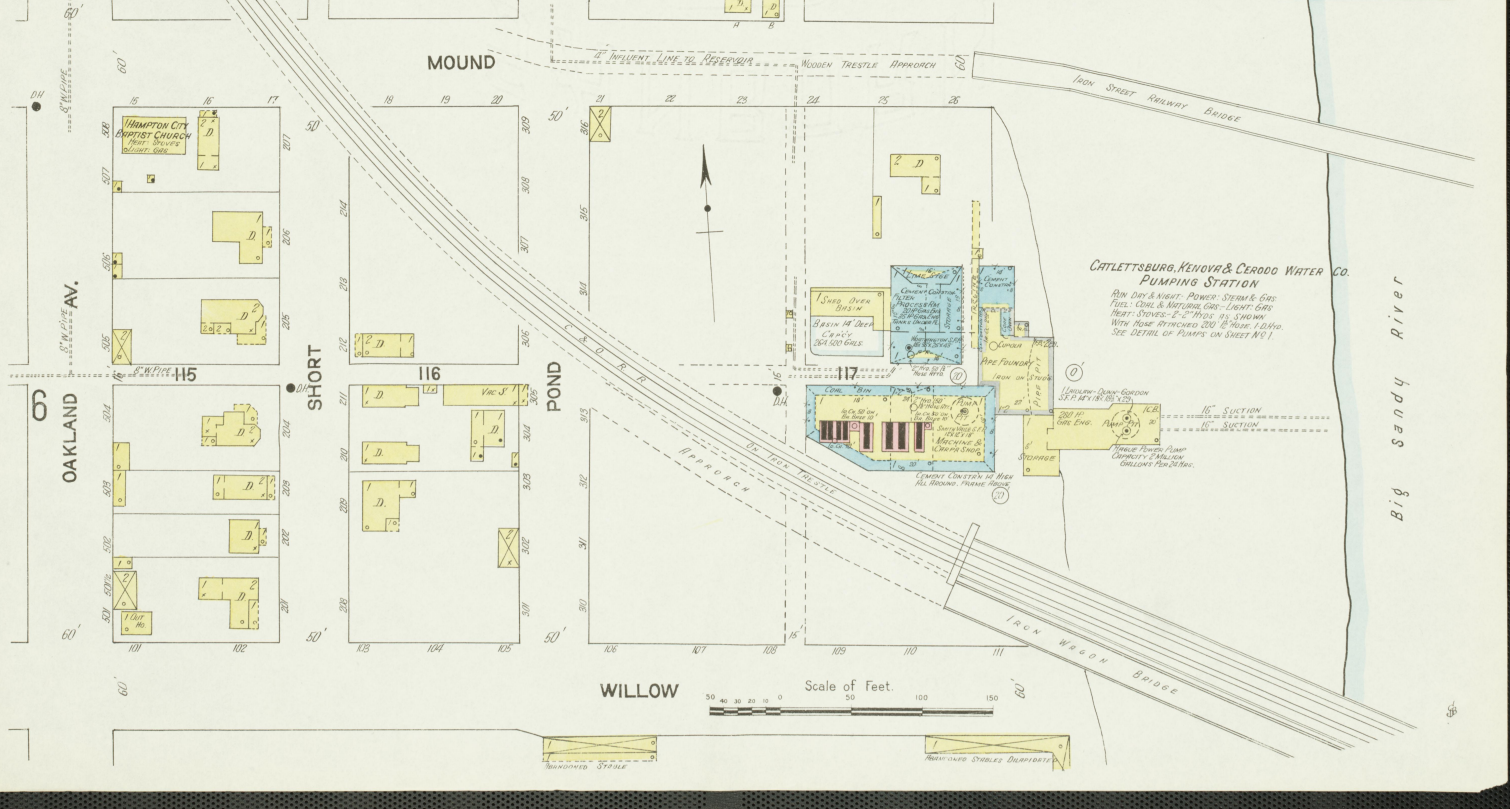


FEB. 1912
CATLETTSBURG
 KY.

SOUTH HAMPTON

CATLETTSBURG DRIVING ASSOCIATION
 BUILDING (SOUTH HAMPTON)
 HANCOCK

7



CATLETTSBURG, KENOVA & CERRO WATER CO.
PUMPING STATION

RAW BAR & MOUNT POWER, STEAM & GAS
 FUEL: COAL & NATURAL GAS - LIGHT GAS
 PUMP STONES - 2" MOUNT, 1/2" SHOWN
 WITH BASE APPROX. 200' 10" HIGH, 1.5' DIA.
 SEE DETAIL OF PUMPS ON SHEET NO. 1

Scale of Feet
 0 10 20 30 40 50 60 70 80 90 100 110 120 130 140 150 160 170 180 190 200

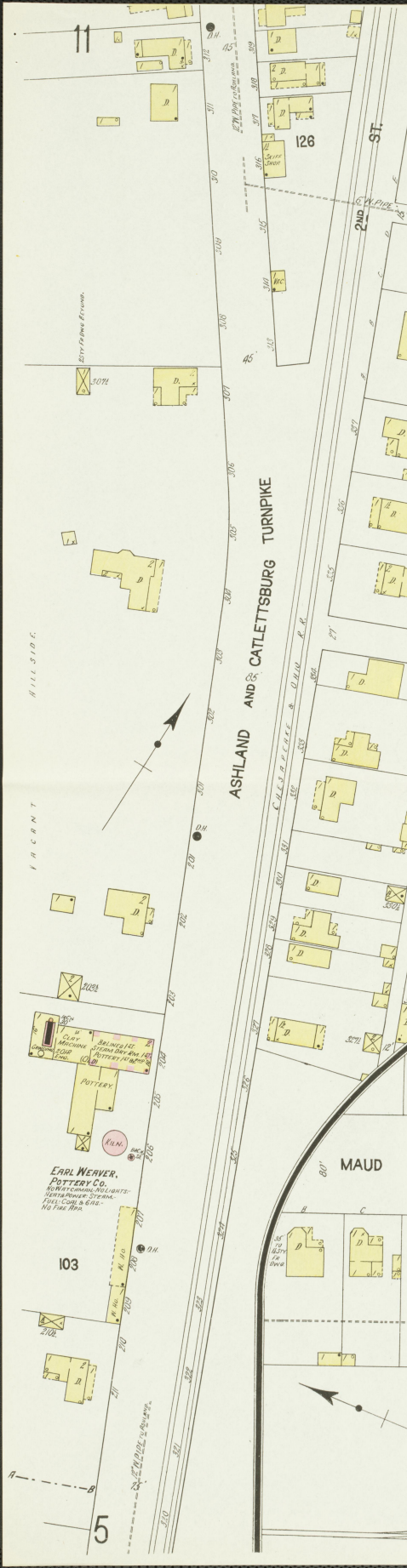
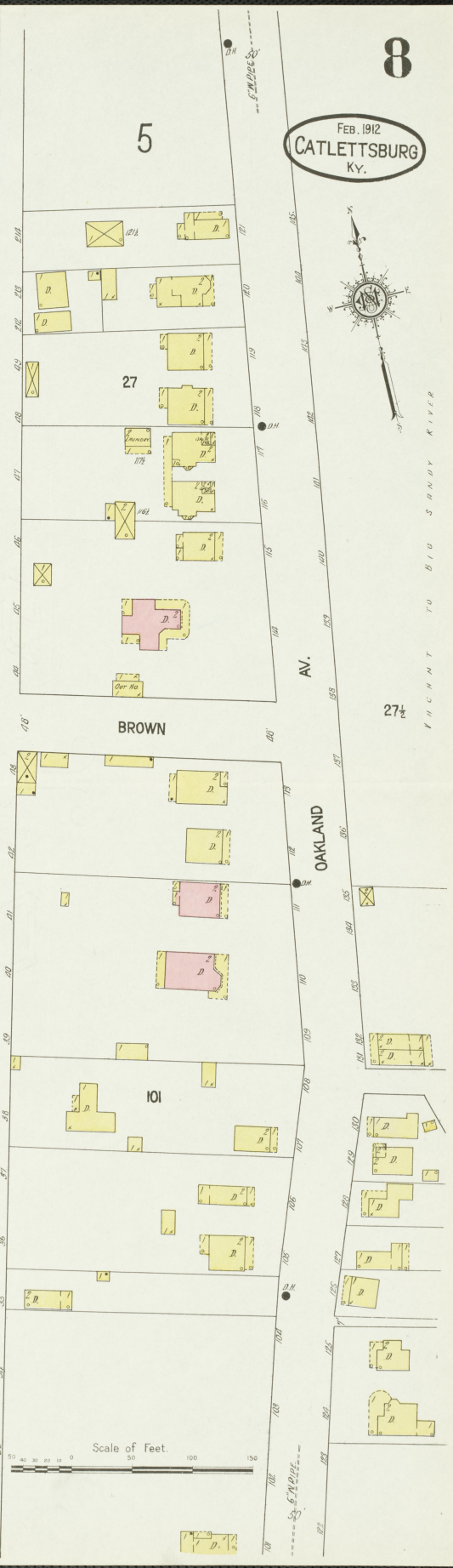
Big sandy River

55

FEB. 1912
CATLETTSBURG
KY.



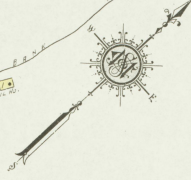
FRONT TO BIG STONRY RIVER



FEB. 1912
CATLETTSBURG
KY.

DIMENSION LUMBER CO. INC.
SAW MILL, LUMBER YARD & PLANING MILL
IV. LUMBER STOCK 1500000 FT. - SAWS NET LOSS \$V. 30000 FT.

PLANNING MILL
LUMBER SHED
STAM DRY KILN
LUMBER 7
LUMBER 10
LUMBER 11
LUMBER 12
LUMBER 13
LUMBER 14
LUMBER 15
LUMBER 16
LUMBER 17
LUMBER 18
LUMBER 19
LUMBER 20
LUMBER 21
LUMBER 22
LUMBER 23
LUMBER 24
LUMBER 25
LUMBER 26
LUMBER 27
LUMBER 28
LUMBER 29
LUMBER 30



VACANT
SAW MILL
VAN HORN SAW MILL
NOT IN OPERATION
NO FIRE INSURANCE
L.P. NO FIRE APPS.



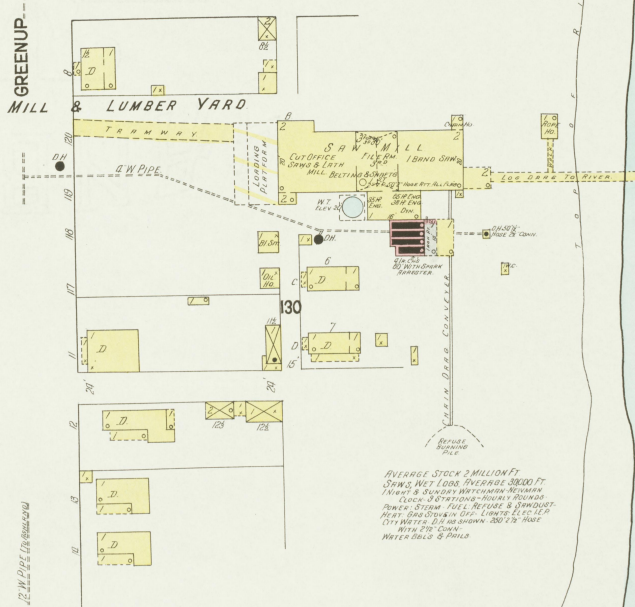
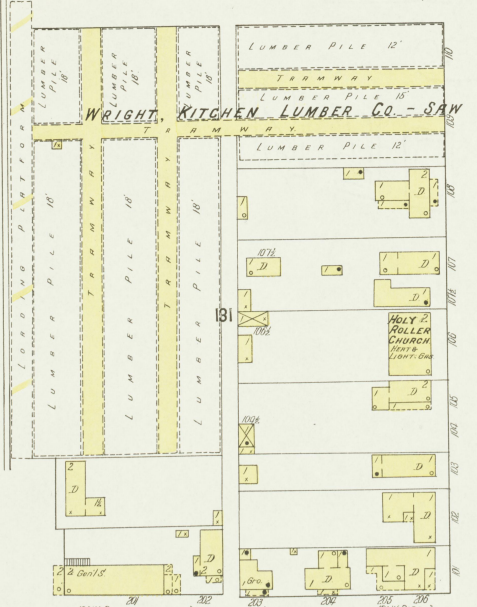
FEB. 1912
CATLETTSBURG
Ky.



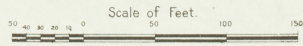
ASHLAND AND CATLETTSBURG TURNPIKE



BROADWAY

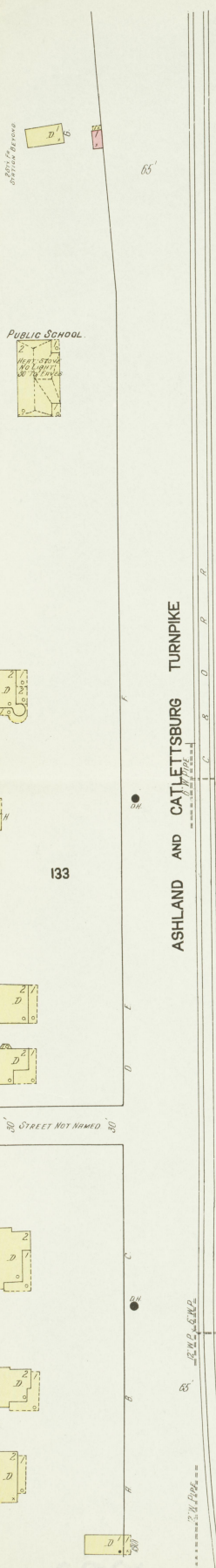


OVERALL STOCK 2 MILLION FT
 SAWYER MILL LOGS 50000 FT
 10000 FT 8 SQUARE WIREMESH NETWORK
 COOKS & PATENTERS - BURNING
 POWER SYSTEM FUEL RETURN & STANDSTILL
 HOIST - BURNING IN OIL LUMBER 5000 FT
 CITY WATER 12 IN. DIAMETER 100 FT. RATE
 WITH 100 GPM
 WATER BAILS & PAIRS



O H I O

R A V I N E



FRONT

85 TO 90 GIVE FRONT SEE SHEET NO. 1

Located 1/4 Miles N of Court Ho.

800' to the front line See sheet 10-11-12-13-14

12\"/>

12\"/>

12\"/>

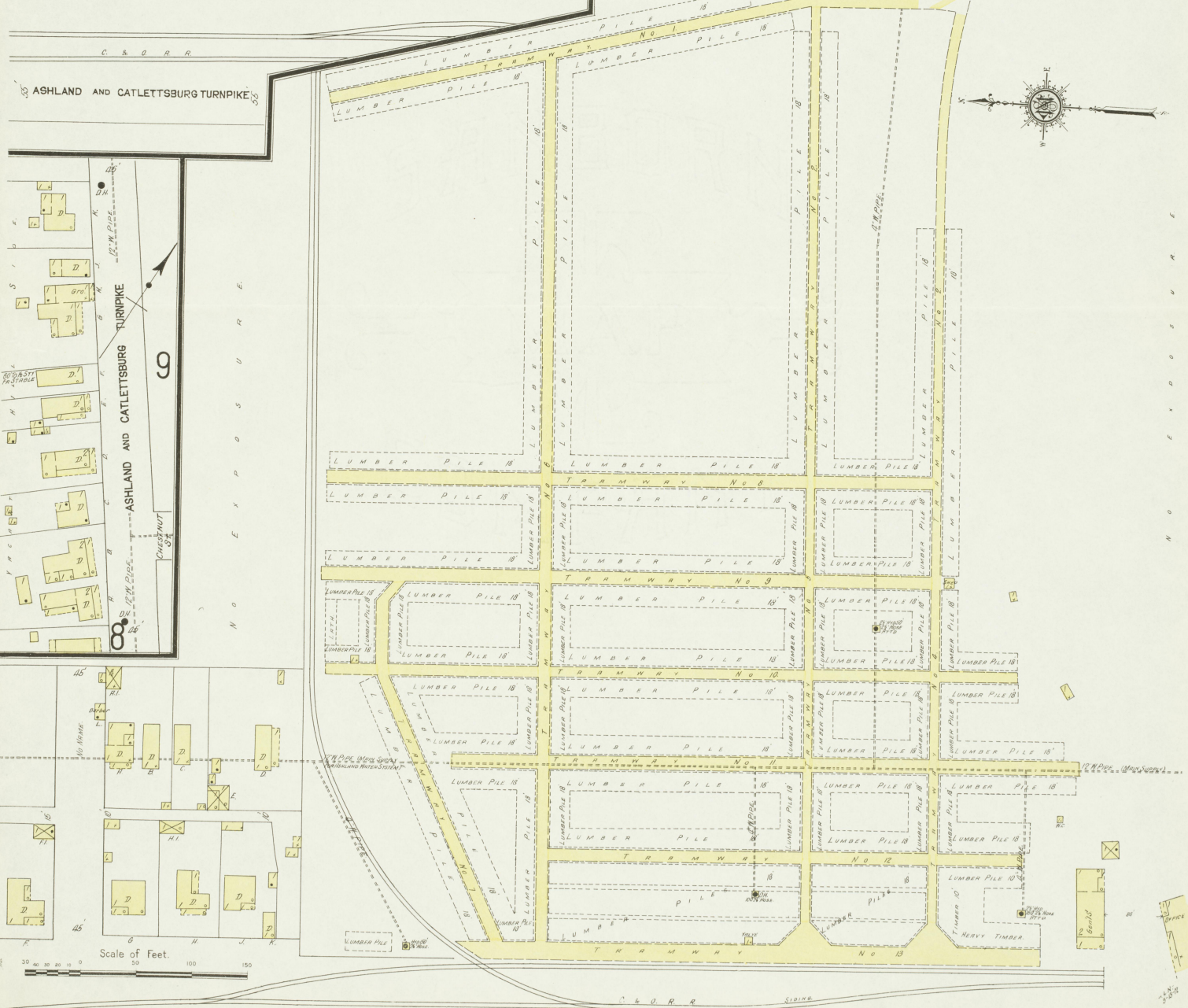
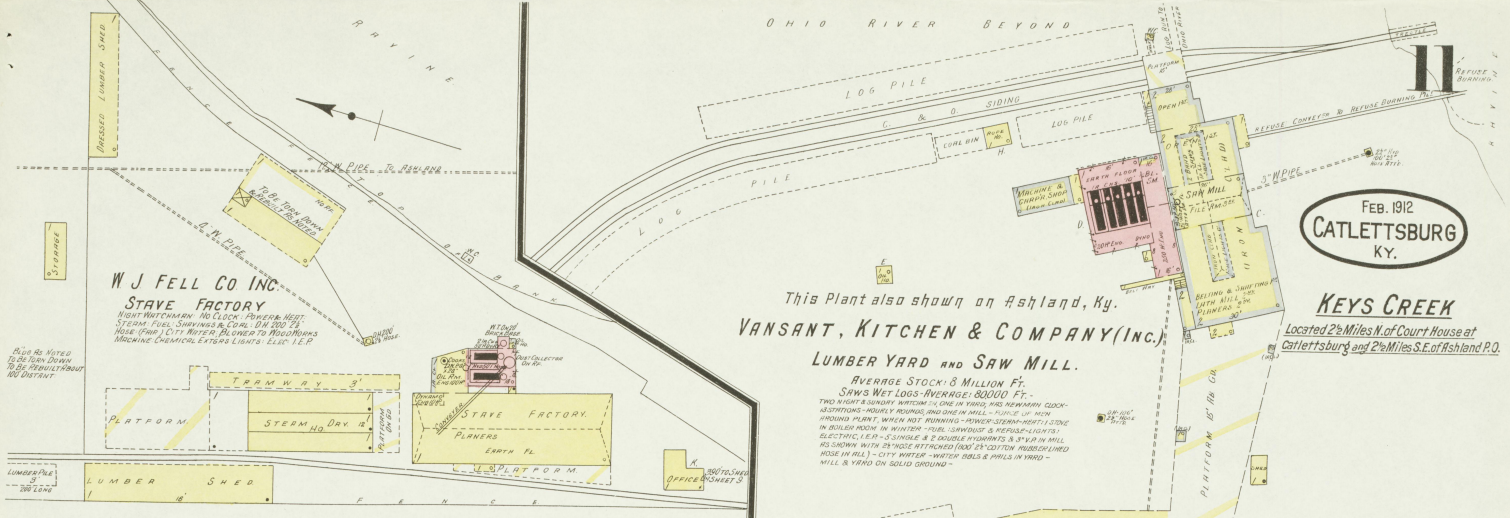
12\"/>

FEB. 1912
CATLETTSBURG
KY.

KEYS CREEK
Located 2 1/2 Miles N. of Court House at
Catlettsburg and 2 1/2 Miles S.E. of Ashland, P.O.

This Plant also shown on Ashland, Ky.
VANSANT, KITCHEN & COMPANY (INC.)
LUMBER YARD AND SAW MILL.

AVERAGE STOCK: 8 MILLION FT.
SAWS WET LOGS - AVERAGE: 80000 FT.
TWO NIGHT SHIFTS - WORKING 24 HOURS - ONE IN YARD, AND REMAINING CLOCK-
WORKING - HOURS BY HORSE AND ONE IN MILL - PLANT ON HIGH
GROUND - WHEN NOT RUNNING - POWER - STEAM - HEAT - IS
IN POWER - IN WINTER - FUEL - LUMBER & WOODS - LOGS -
ELECTRIC, I.E.P. - SINGLE & DOUBLE - SAWMILLS & S.V.A. IN MILL
AND SHEDS WITH 24 HOSE ATTACHED - LOGS & CUTTING - RUBBER-LINED
HOSE IN MILL - CITY WATER - WATER - LOGS & PILES IN YARD -
MILL & YARD ON SOLID GROUND -



W J FELL CO INC.
STAVE FACTORY
MIGHTY STEAM - NO CLOCK - POWER - HOT
STEAM - FUEL - SHAPING & COAL - 24 HOURS
HOSE (PUMP) CITY WATER - LOGS TO PRODUCE
MACHINE - CHEMICAL - EXTER - LIGHTS - ELEC. I.E.P.

ASHLAND AND CATLETTSBURG TURNPIKE

ASHLAND AND CATLETTSBURG TURNPIKE

Scale of Feet.
0 50 100 150