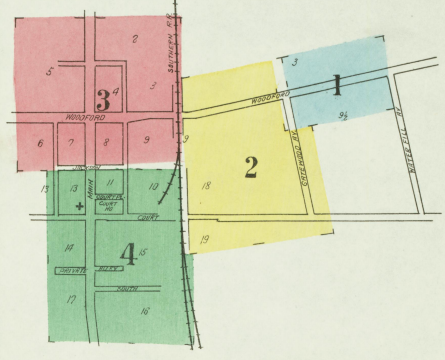
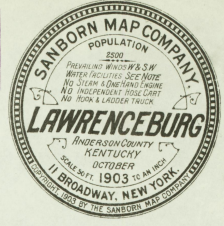


NOTE: CITY COUNCIL HAS AUTHORITY TO ISSUE BONDS TO BUILD WATER WORKS. PLANS ARE BEING MADE AND BIDS WILL BE OPENED BEFORE OCT. 15, 1917.
 1. LAMPBURNER CHEMICAL AND PAINT ENGINE 1500' NEW 2" HOSE

KEY

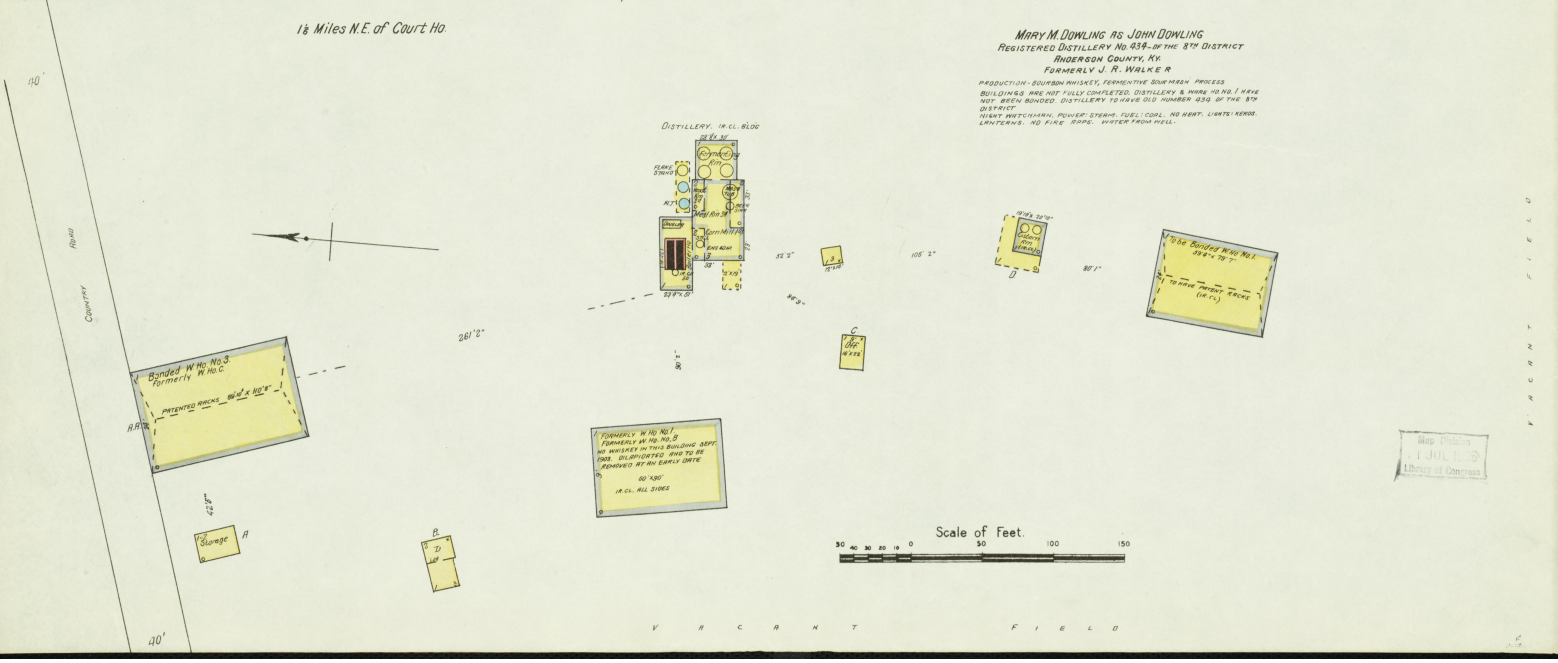
- FIRE WALL IN ANY ROOM
- META CEILING
- FIRE WALL IN KEY ROOM
- WOOD CORNICE
- WATER IN KEY ROOM
- FRAME PARTITION
- OPENING WITH IRON DOOR
- IRON CORNICE
- STANDARD
- WINDOW 8' HIGH
- WINDOW 10' HIGH
- WINDOW 12' HIGH
- WINDOW 14' HIGH
- WINDOW 16' HIGH
- WINDOW 18' HIGH
- WINDOW 20' HIGH
- WINDOW 22' HIGH
- WINDOW 24' HIGH
- WINDOW 26' HIGH
- WINDOW 28' HIGH
- WINDOW 30' HIGH
- WINDOW 32' HIGH
- WINDOW 34' HIGH
- WINDOW 36' HIGH
- WINDOW 38' HIGH
- WINDOW 40' HIGH
- WINDOW 42' HIGH
- WINDOW 44' HIGH
- WINDOW 46' HIGH
- WINDOW 48' HIGH
- WINDOW 50' HIGH
- WINDOW 52' HIGH
- WINDOW 54' HIGH
- WINDOW 56' HIGH
- WINDOW 58' HIGH
- WINDOW 60' HIGH
- WINDOW 62' HIGH
- WINDOW 64' HIGH
- WINDOW 66' HIGH
- WINDOW 68' HIGH
- WINDOW 70' HIGH
- WINDOW 72' HIGH
- WINDOW 74' HIGH
- WINDOW 76' HIGH
- WINDOW 78' HIGH
- WINDOW 80' HIGH
- WINDOW 82' HIGH
- WINDOW 84' HIGH
- WINDOW 86' HIGH
- WINDOW 88' HIGH
- WINDOW 90' HIGH
- WINDOW 92' HIGH
- WINDOW 94' HIGH
- WINDOW 96' HIGH
- WINDOW 98' HIGH
- WINDOW 100' HIGH

THE TERRITORY OF
 DISTRICT OF
 DEL. 29 1908
 COUNTY OF
 1914 29 1915
 30 30
 DIST. 2



INDEX.

STREETS.		SPECIALS.	
NO.	NAME	NO.	NAME
171-226	Court	10	Anderson County Distillery
227-294	Bond & Lillard Distillery	5	Lawrenceburg Hotel
1 & 2	Gatewood Ave.	10	County Court House
3 & 4	Jackson	10	Gray, J. T. Distillery
5 & 6	Lawrenceburg and Versailles Pike	8	Dawling, J. & E. Distillery
1-59	Main	8	J. Estate, Coopersage
60-133	South	10	M. M. Distillery
100-302	Waterfill Ave.	10	Holdman Distilling Co.
303-318	Woodford	10	Holdan Ho.
319-348	Woodford	10	Kentucky Distilleries & Warehouse Co., 5, 6, 7, 9
		10	United Baptist Church
		10	Van Arsdale, J. C., Wagon Shop
		10	Methodist Church, on L. & V. Pike
		10	Episcopal Church
		10	Colored
		10	Murphy, B. & Co., Belle of Anderson Co. Distillery
		10	Old Prentice Distillery
		10	Petty Ho.
		10	Presbyterian Church
		10	Public School
		10	Hipp, J. P. Warehouse
		10	T. B. Distillery
		10	Saffell, W. B. Distillery
		10	Searcy, W. Distillery
		10	Southern R. R. Depot
		10	Thompson, J. B. & Bro. Mach. Shop and Grist Mill
		10	Thurman, E. L., Lumber



MARY M. DOWLING AS JOHN DOWLING
 REGISTERED DISTILLERY No. 834 - BY THE 8TH DISTRICT
 ANDERSON COUNTY, KY.
 FORMERLY J. P. WALKER

Map Taken
 JUL 1915
 J. D. WALKER

OCT. 1903
LAWRENCEBURG
KY.

2

WOODFORD

AV.
GATEWOOD

COURT

3

4

V R C H N T F I E L D S



M.E. CHURCH
ORGANIZED
BY
REV. J. W. HARRIS
FIRST CHURCH
SOUTH-WEST CORNER

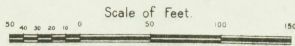
**JOHN DOWLING'S ESTATE
COOPER SHOPS**
DAYS PROVISIONS, AND THE REPAIRS FROM
WHEELS, IN THIS SHOP FILLED, NO HEAVY LIGHTS
PAPER, PAPER, AND COILS, & REPAIRS FROM STONE
DOWLING'S, FILM, REPAIR BY STONE

CHRISTIAN CHURCH
ORGANIZED
BY
REV. J. W. HARRIS
FIRST CHURCH
SOUTH-WEST CORNER

ROMAN CATH. CHURCH.
SOUTH-WEST CORNER
DOWLING'S

Slave Breeding
M. W. HARRIS
REV. J. W. HARRIS
FIRST CHURCH
SOUTH-WEST CORNER

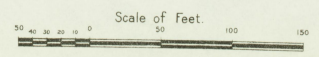
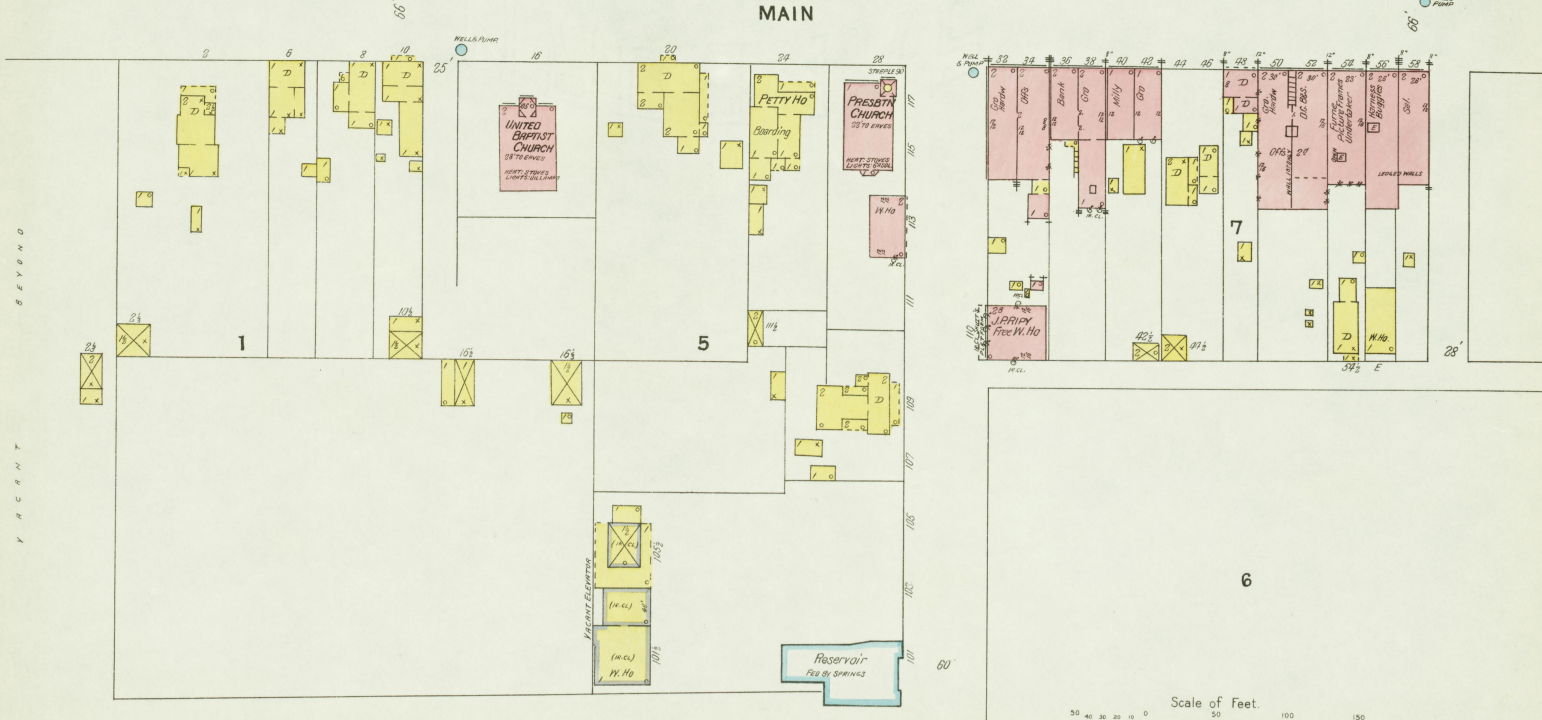
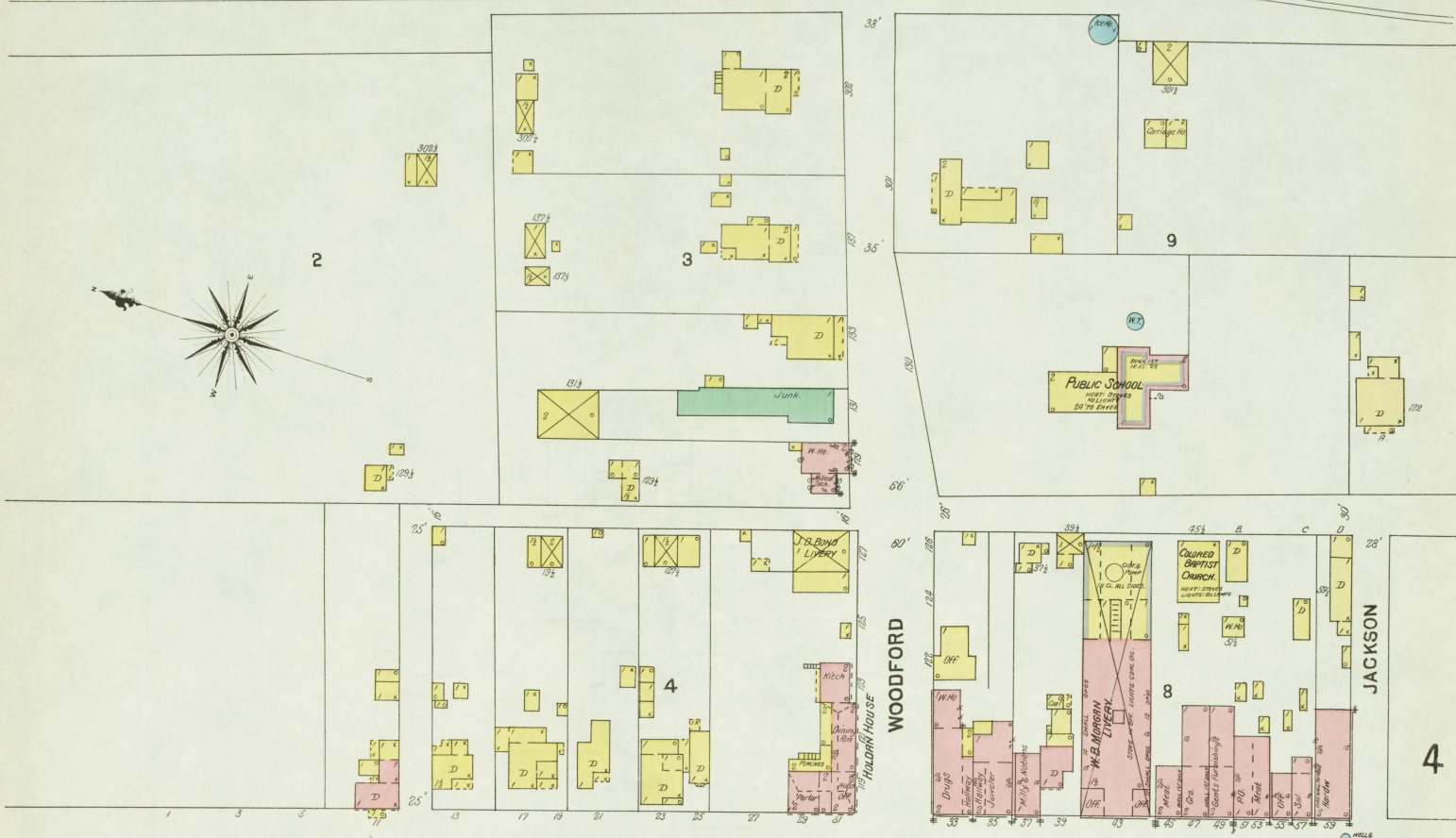
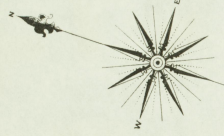
**Pack Poultry
Slaughter-Ho**



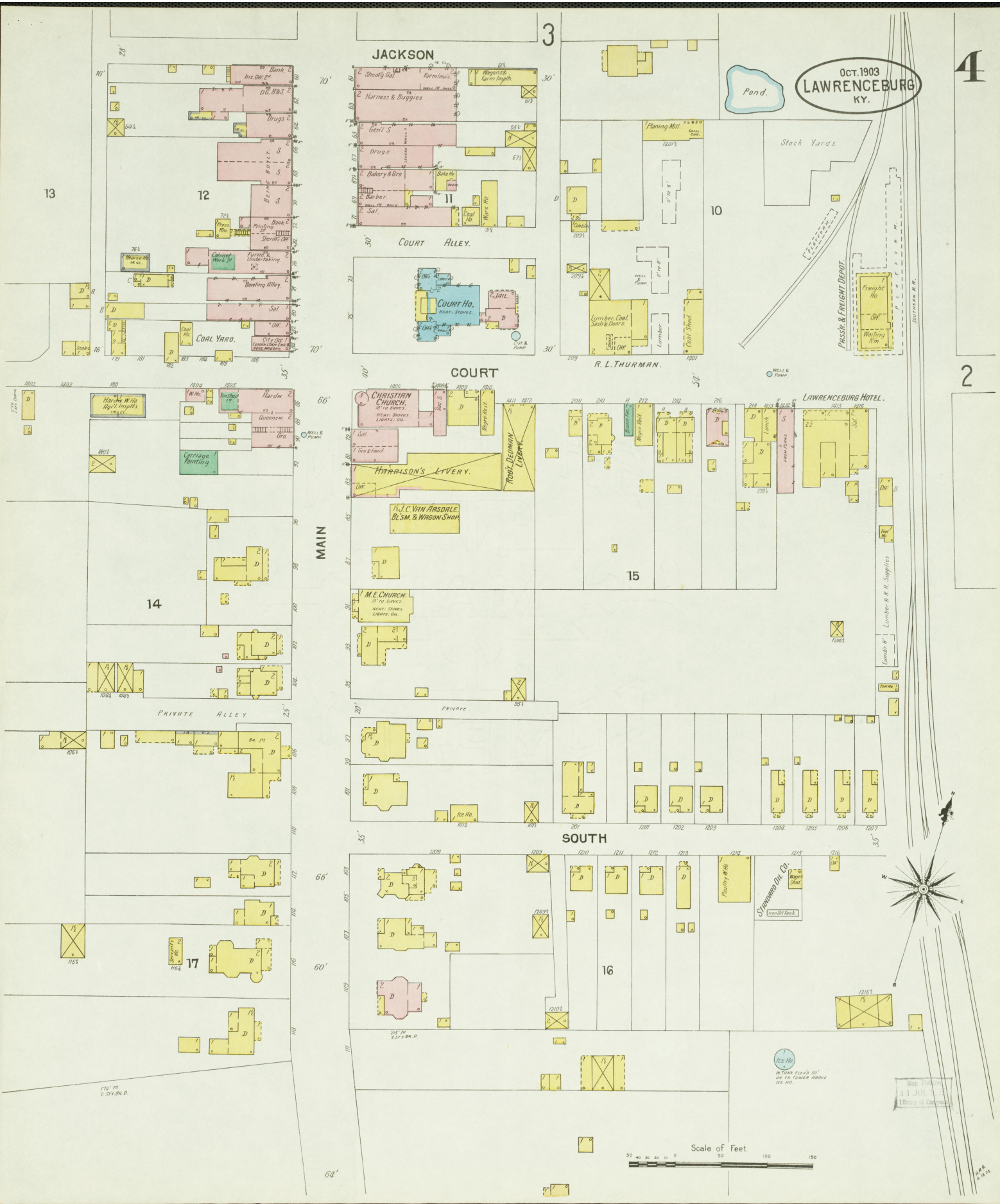
Map Obtained
JUL 1903
Library of Congress

2

SOUTHERN R.R.



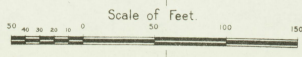
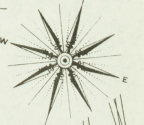
OCT. 1903
LAWRENCEBURG
KY.



Stock Yards

Pass & Freight Depot

Freight Ho.
Waiting Rm.



Map Drawn
31 JUL 1903
Library of Congress

W.T.W. & Co.

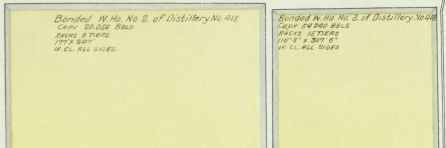
5

N O EXPOSURE

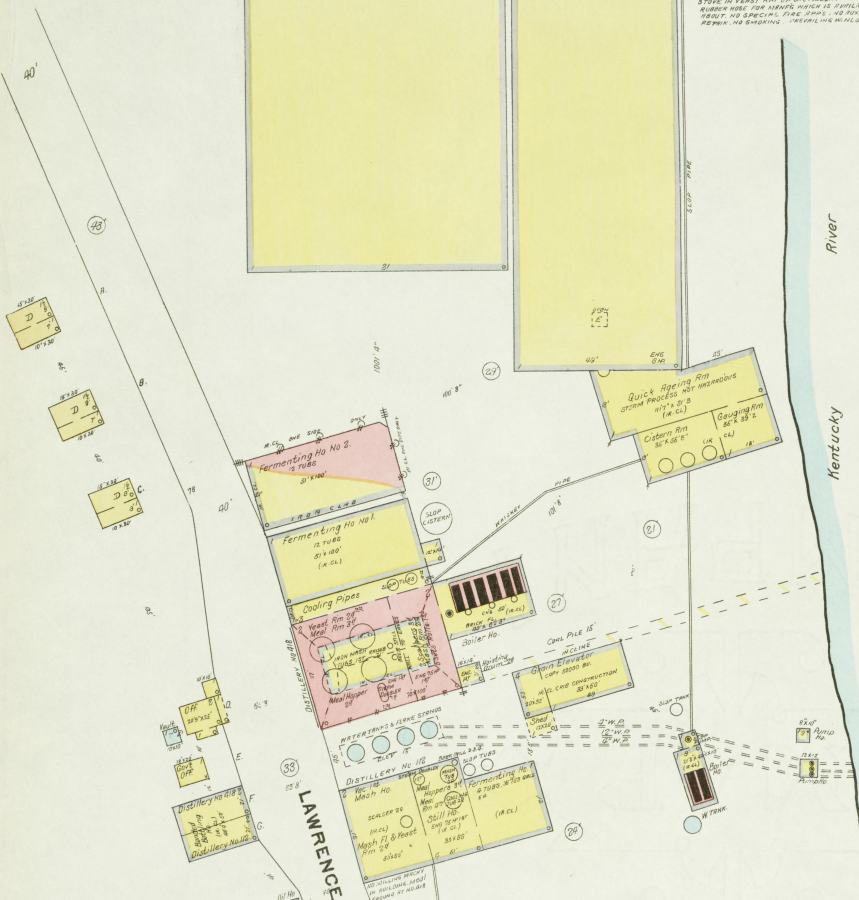
5

**KENTUCKY DISTILLERIES & WAREHOUSE CO'S
CLOVER BOTTOM DISTILLERY
RUN AS ANDERSON COUNTY DISTILLERY COMPANY, ET AL.
FORMERLY THOMAS B RIPEY**

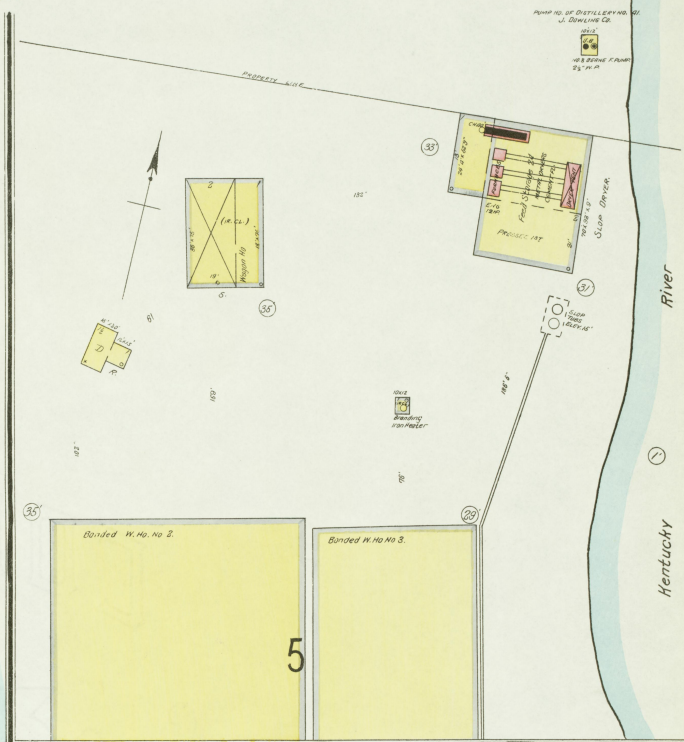
Oct. 1903
**LAWRENCEBURG
KY.**



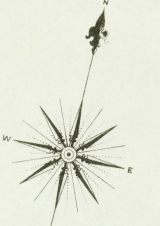
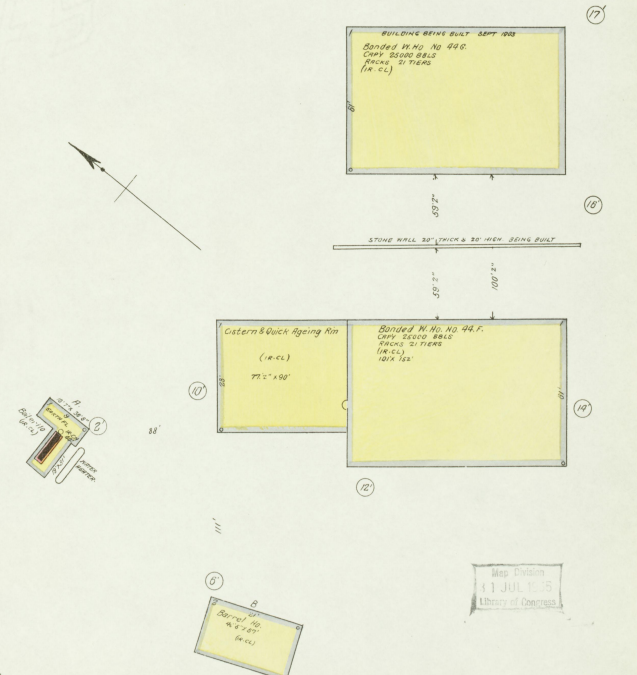
REGISTERED DISTILLERY NO. 112, 1ST DISTRICT ANDERSON COUNTY, KENTUCKY
PRODUCTION BELONGING HOUSE MADE SUIV MASH WHISKEY. MASH QUANT. 2000 BU
YIELD 25 BBL'S PER BU. QUARTERED. 5 TO 6 MONTHS PER YEAR. 100% B. 25%
CURRENT IMPORTATION UNDER FEDERAL LICENSE. LIGHT LAMP ALL LIGHTING & LOCAL ELEC.
DISTILLERY 478 & 10 & OFF. DIMENSIONED LIGHTS USED ONLY WHEN IN OPERATION. MASH
STORE IN VENT. PAN OF DISTILLERY. CO. 2500 BBL'S INTER-PAN MASH. 250' AL.
BURNER HOSE FOR MASH WATER IS AVAILABLE FOR USE IN CASE OF FIRE. SMOKE-PIPE BURNS
RIGHT IN SPECIAL CASE. NO DISTILLERY. AND. BUILDINGS CLEAN. MASH IN GOOD
REPAIR. NO SMOKE. (MATERIALS W. H. H.)



KENTUCKY DISTILLERIES & WAREHOUSE CO'S
REGISTERED DISTILLERY NO. 112, 1ST DISTRICT
ANDERSON COUNTY, KY.
RUN AS T. B. RIPEY
PRODUCT: GEORGINA PRIMER & MASH MADE SUIV MASH WHISKEY.
MASH CAMP 2500 BU PER DAY. 25 BBL'S PER BU. 5 TO 6 MONTHS
PER YEAR. 100% B. 25% TRUCKS 25 TRUCKS. BUILDINGS
COMMON REPORT.



ADDITIONAL W. NOS.
KENTUCKY DISTILLERIES & W. H. H. CO.
CLOVER BOTTOM DISTILLERY
REGISTERED DISTILLERY NO. 112, 1ST DISTRICT, ANDERSON COUNTY, KY.
MASH CAMP 2500 BU PER DAY. 25 BBL'S PER BU. 5 TO 6 MONTHS
PER YEAR. 100% B. 25% TRUCKS 25 TRUCKS. BUILDINGS
COMMON REPORT.



Scale of Feet
0 20 40 60 80 100 120 140 160

Map drawn
11 JUL 1905
Library of Congress

OCT. 1903
LAWRENCEBURG
KY.

6

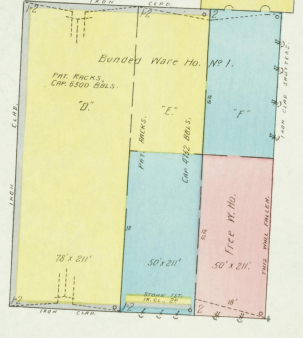


KENTUCKY DISTILLERIES & WAREHOUSES CO'S "CLIFF SPRING DISTILLERY" WARE HOUSES.
FORMERLY RUN AS ANDERSON COUNTY SOUR MASH DISTILLING CO.
FORMERLY THOMAS B. RUFF.
WARE HO'S OF REGISTERED DISTILLERY NO. 192, 8TH DIST., ANDERSON CO., KY. SHOWN ON SHEET NO. 5.
PRODUCTION: BOURBON POWER MADE SOUR MASH WHISKEY.

MASH CAP. 1500 BUSH., YIELD 150 BOLS.
RIGHT WATERWHEEL POWER-STEAM TIE-
COAL LIGHTS LOW'S BELONGING TO RIVER WHEEL
FROM RIVER, NO FIRE PIPE
NOTE: LETTERS D, E, C, D, E & F ON W. HO'S
ARE NOT DESIGNATIONS, BUT INDICATE ONLY SECTIONS
OF BARS.

M. E. CHURCH.

Scale of Feet.
0 50 100 150



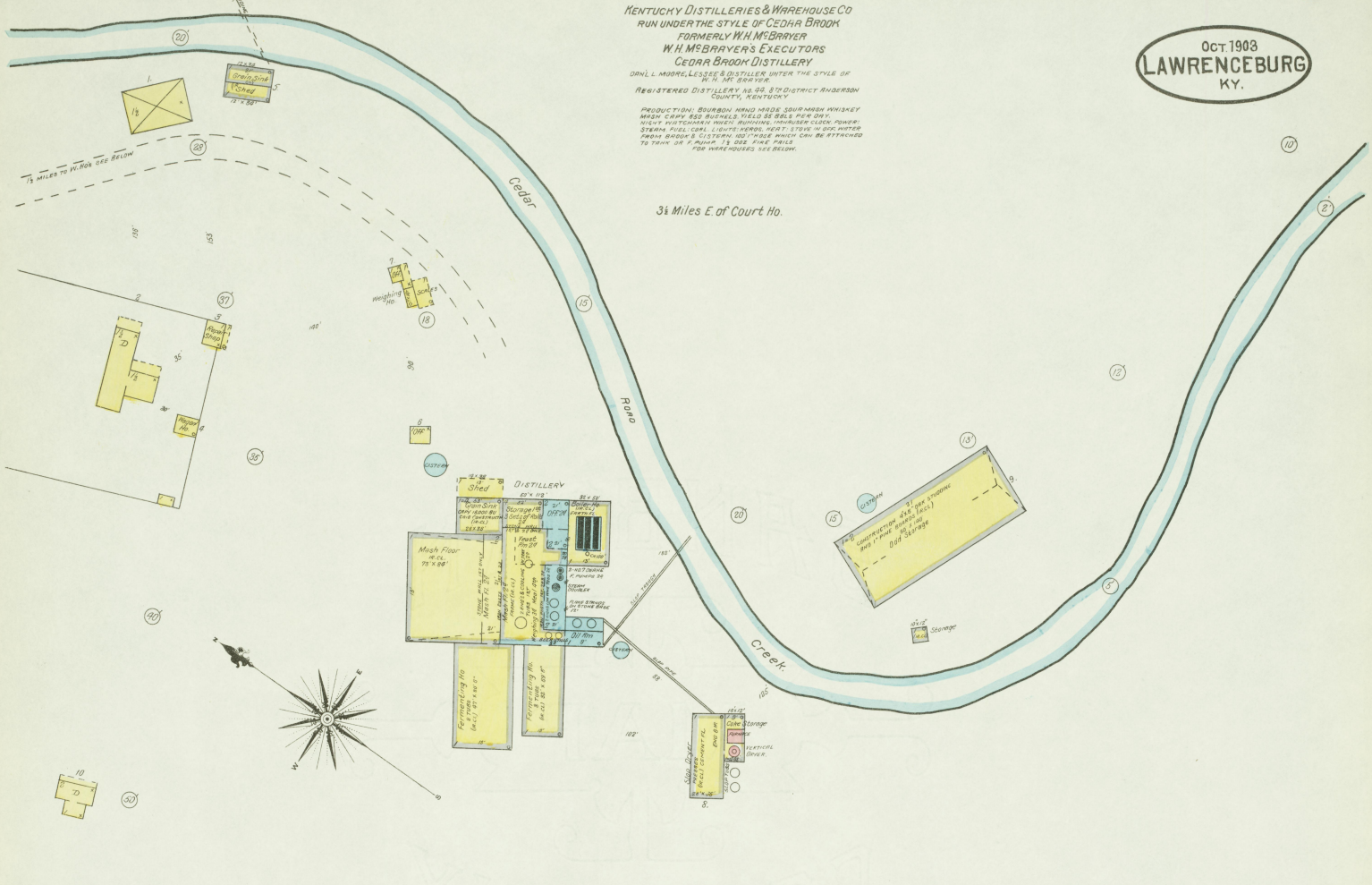
Map Printed
JUL 15
Central of Kentucky

OCT 1908
LAWRENCEBURG
KY.

KENTUCKY DISTILLERIES & WAREHOUSE CO
RUN UNDER THE STYLE OF CEDAR BROOK
FORMERLY W.H. MCBRYER
W.H. MCBRYER'S EXECUTORS
CEDAR BROOK DISTILLERY

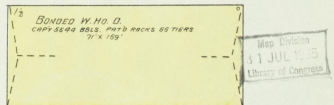
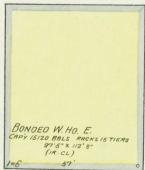
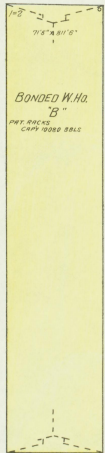
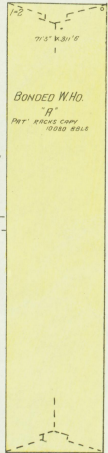
DAN L. MADRE LESSEE & DISTILLER UNDER THE STYLE OF
W.H. MCBRYER
REGISTERED DISTILLERY NO. 83, 87 & 89 DISTRICT ANDERSON
COUNTY, KENTUCKY

PRODUCTION: BOURBON HAND MADE SOUR MASH WHISKEY
MASH CAPY 855 BUSHELS YIELD 56 BBL PER DAY.
MASH WATER 100 GAL PER BUSHEL. CONDENSER COOLING WATER
STEAM FUEL OIL LIGHT OIL. HEAT 1000 LBS COOL WATER
PER BUSHEL DISTILLERS 100% BBL WHICH CAN BE STRIPPED
TO 100% OR 10% MORE 1% SEE FIRE WALL
FOR WAREHOUSES SEE BELOW.



3 1/2 Miles E. of Court Ho.

1 1/2 MILES TO DISTILLERY
SEE ABOVE



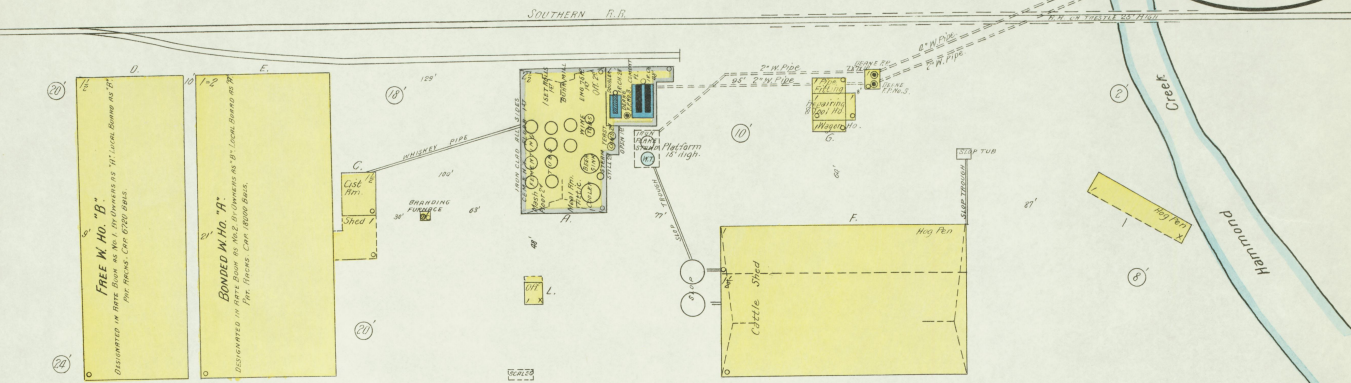
WAREHOUSES OF CEDAR BROOK DISTILLERY
1 1/2 Miles From Distillery

NO WATER-PROOF. VERY STOVE IN OFF. NO LIGHTS.
NO FIRE STOPS

2 1/2 Miles E. of Court Ho.

Scale of Feet.
50 100 150

OCT. 1903
LAWRENCEBURG
KY.



W. B. SAFFELL.
REGISTERED DISTILLERY No. 123, 8TH DISTRICT
ANDERSON CO. KY.
PRODUCTION: BOURBON HAND MADE SOUR MASH WHISKEY.
MASH CAP. 500 BUS. YIELD 50 BBLs. PER DAY.
2 1/2 MILES N.W. OF COURT HO.
RIGHT BELONGS TO W. B. SAFFELL. POWER STOLEN FROM CREEK. FUEL
LANTERNS MUST STAY IN OFF WATER FROM CREEK. FUEL
COPY. 100 FIRE APP.



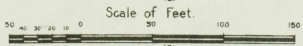
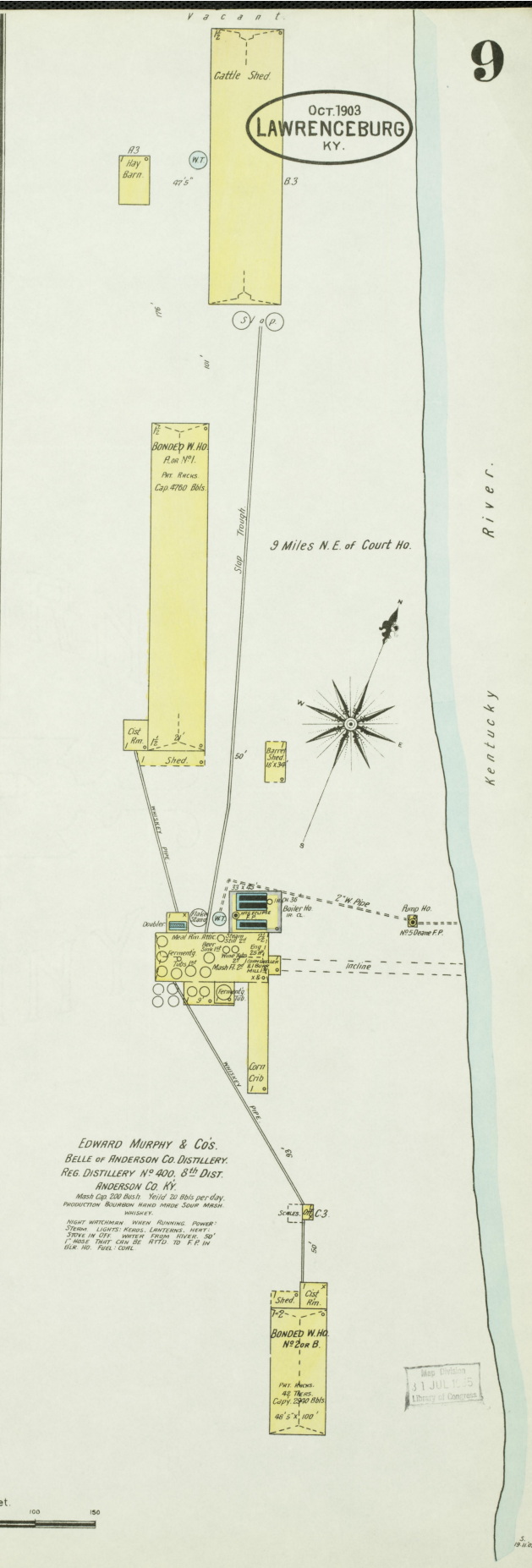
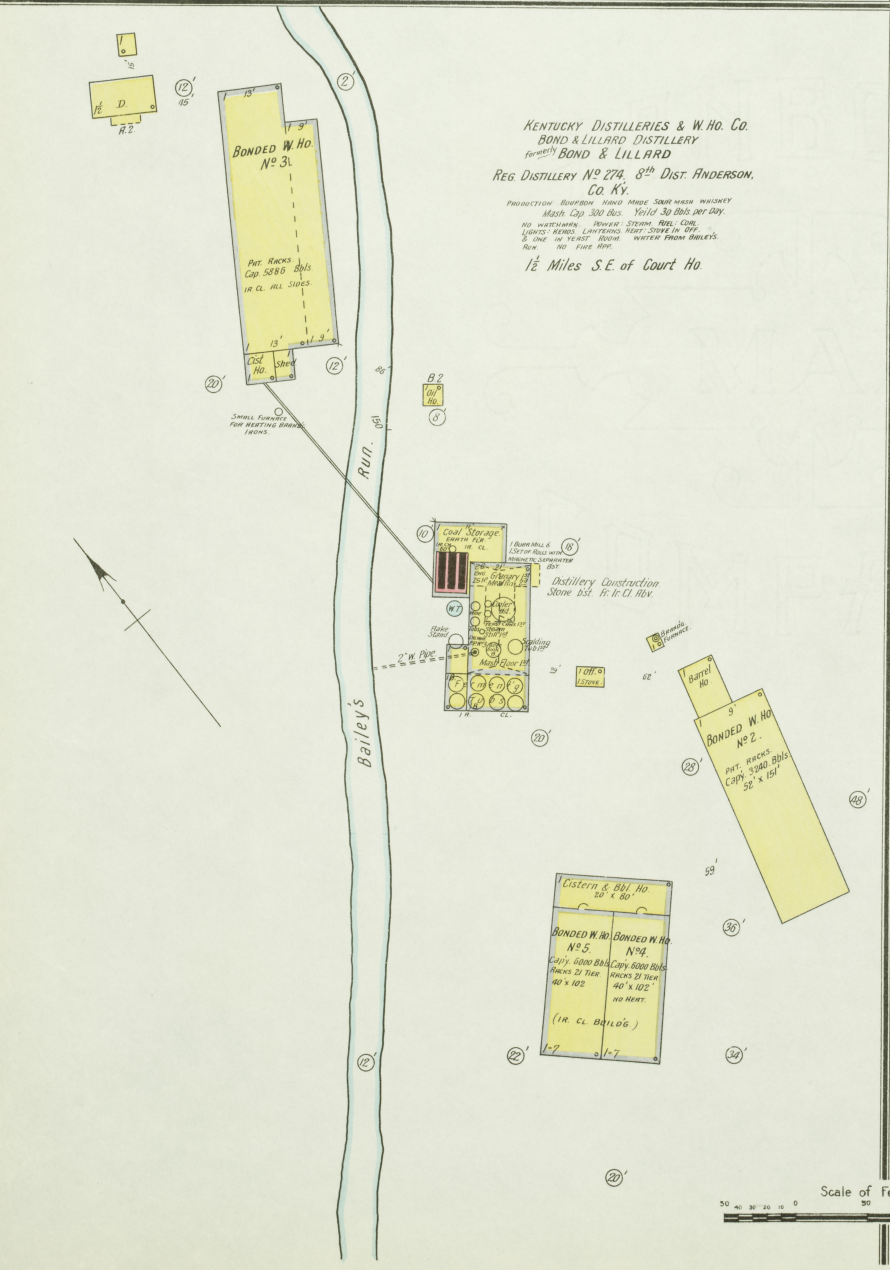
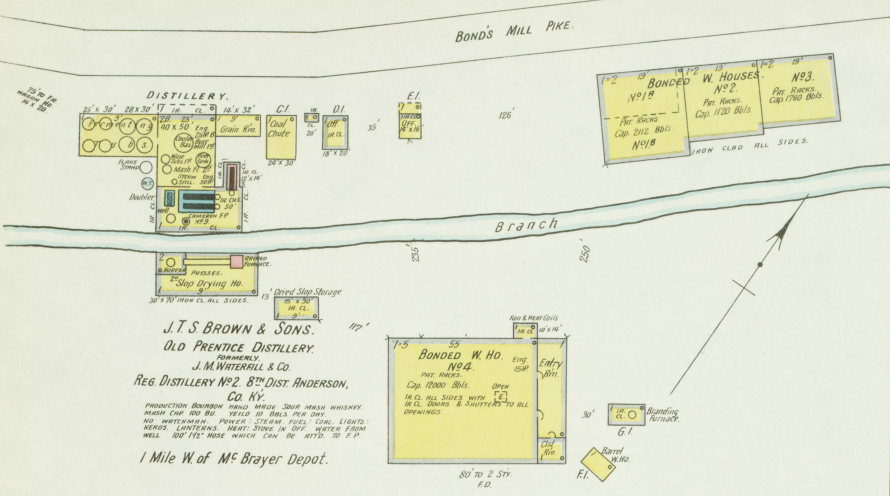
JOHN & EDWARD DOWLING
FORMERLY JOHN DOWLING & CO.
UNDER THE STYLE OF WATERHILL & FRAZIER
REGISTERED DISTILLERY No. 41, 8TH DIST. ANDERSON CO., KY.
PRODUCTION: BOURBON POWER MADE SOUR MASH WHISKEY.
MASH CAP. 250 BUS. YIELD 25 BBLs. PER DAY.
1/4 MILES S.E. OF COURT HO.
NO WATCHMAN. POWER STOLEN FROM CREEK. MUST STAY IN
OFF LIGHTS. FUEL LANTERNS WATER PUMPED FROM KENTUCKY
RIVER BY DEWITT C. BROWN. 100' x 50' x 50' FUEL TANK MUST BE
ATTACHED TO W. TANK.

Scale of Feet
50 100 150

Map drawn
31 JUL 1903
Theory of Conner

V.P.
11-19

Oct. 1903
LAWRENCEBURG
KY.

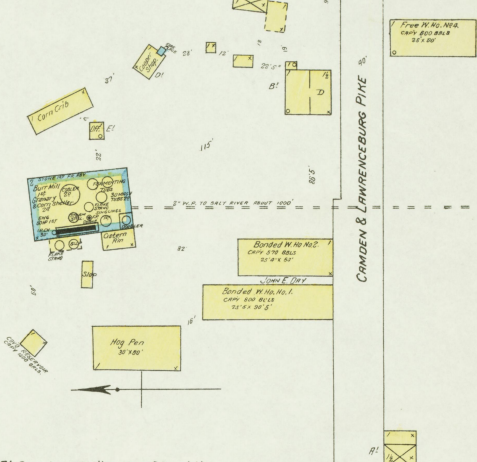


Map Division
31 JUL 1903
Library of Congress

OCT. 1903
LAWRENCEBURG
KY.

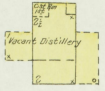
THE ANDERSON COUNTY DISTILLERY
JOHN L. DRY, FORMERLY DRY & HOFF
REGISTERED DISTILLERY NO 134, 8TH DISTRICT,
ANDERSON COUNTY, KENTUCKY.

PRODUCTION: BOURBON & RYE WHEAT MADE SOUR MASH WHISKEY.
MASH COPY 50 BUSHELS. WILD YEAST PER DAY. NO MORTARMAN
POWER SYSTEM. FUEL: COAL & WOOD. STEAM: WASTE CONTAINING HEAT
STEAM. WATER FROM RESERVOIR & WELLS. DISTILLED IN 3-4
& 5 FEET OF SMALL HOSE.



At Camden, 10 Miles N.W. of Court Ho.

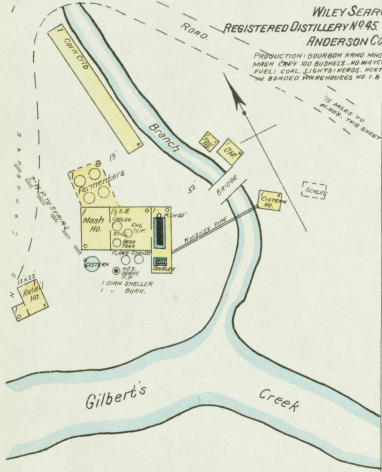
J. T. GRY, FORMERLY B. D. HAWKINS & CO
REGISTERED DISTILLERY NO 7, 8TH DISTRICT,
ANDERSON COUNTY, KY.



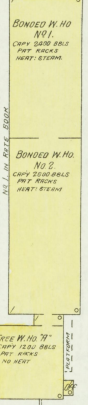
7 1/2 Miles S. of Lawrenceburg.

WILEY SEARCY
REGISTERED DISTILLERY NO 48, 8TH DISTRICT
ANDERSON COUNTY, KY.

PRODUCTION: BOURBON WHEAT MADE SOUR MASH WHISKEY.
MASH COPY 100 BUSHELS. NO MORTARMAN. POWER SYSTEM
STEAM. FUEL: COAL & WOOD. STEAM: WASTE CONTAINING HEAT
STEAM. WATER FROM WELLS & CREEK. DISTILLED IN 3-4
& 5 FEET OF SMALL HOSE.



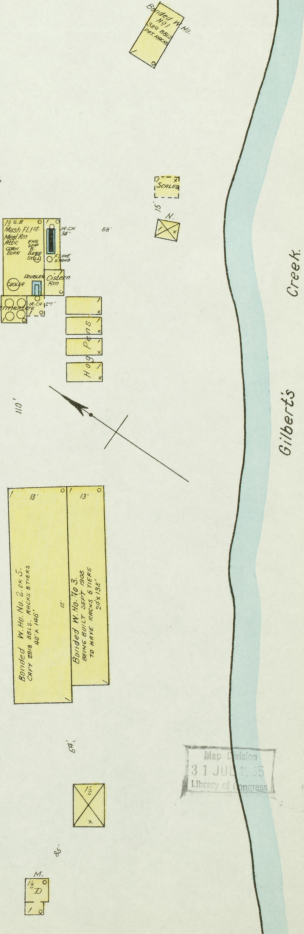
3 1/2 Miles W. of Mf Brayer Depot.



4 1/2 Miles W of Mf Brayer Depot.

T. H. BOND & BRO.
FORMERLY HAWKINS & BOND
REGISTERED DISTILLERY NO 236, 8TH DISTRICT
ANDERSON COUNTY, KY.

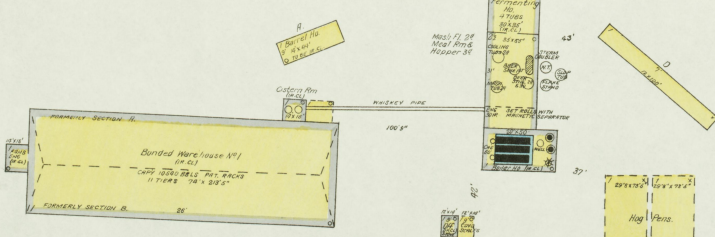
PRODUCTION: BOURBON WHEAT MADE SOUR MASH WHISKEY.
MASH COPY 80 BUSHELS PER DAY. NO MORTARMAN
POWER SYSTEM. FUEL: COAL & WOOD. STEAM: WASTE CONTAINING HEAT
STEAM. WATER FROM WELLS & CREEK. DISTILLED IN 3-4
& 5 FEET OF SMALL HOSE.



6 Miles N. of Court Ho.

THE HOFFMAN DISTILLING CO.
FORMERLY HOFFMAN & HAWKLEY AS S. D. HAWKLEY
REGISTERED DISTILLERY NO 408, 8TH DISTRICT, ANDERSON
COUNTY, KENTUCKY

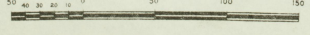
PRODUCTION: BOURBON & RYE WHISKEY. FERMENTIVE SOUR MASH
PROCESS. MASH COPY 100 BUSHELS. WILD YEAST PER DAY. NO MORTARMAN
POWER SYSTEM. FUEL: COAL & WOOD. STEAM: WASTE CONTAINING HEAT
STEAM. WATER FROM WELLS & CREEK. DISTILLED IN 3-4
& 5 FEET OF SMALL HOSE.



Hammond

Creek.

Scale of Feet



Map Section
31 JUL 1905
Library of Congress