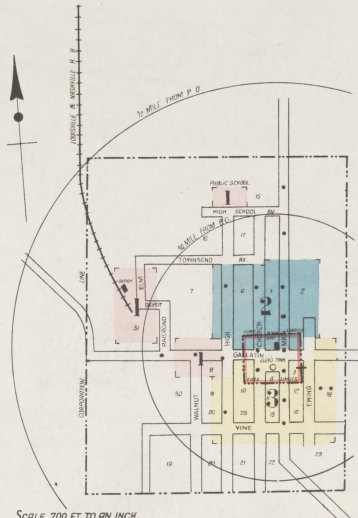




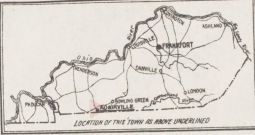
WATER FACILITIES:
Served by town direct pressure system - Water in summer from South Spring in main by 1 Meyer's Bullaugers force pump (capacity 400 gals per min) - Overflow pipes 70' from town on Key City - 2000 gals. min. in above business section - Pressure 40 lbs. - 4 miles of 12" to 36" pipe - 27 hydrants - average daily consumption 1000 gals.

FIRE DEPT.:
Morrison - Paid per fire - 1 chief, 10 chiefs (station (brick building), 1 fire hose & steam truck, 1000 ft. hose & 2 40' tall steam ladders, 100' chem. hose - alarm by siren on main tank & by telephone - fire limits 100' from square as shown.

Painting - None - Grades level - Public Lights - electric -



SCALE 700 FT. TO AN INCH

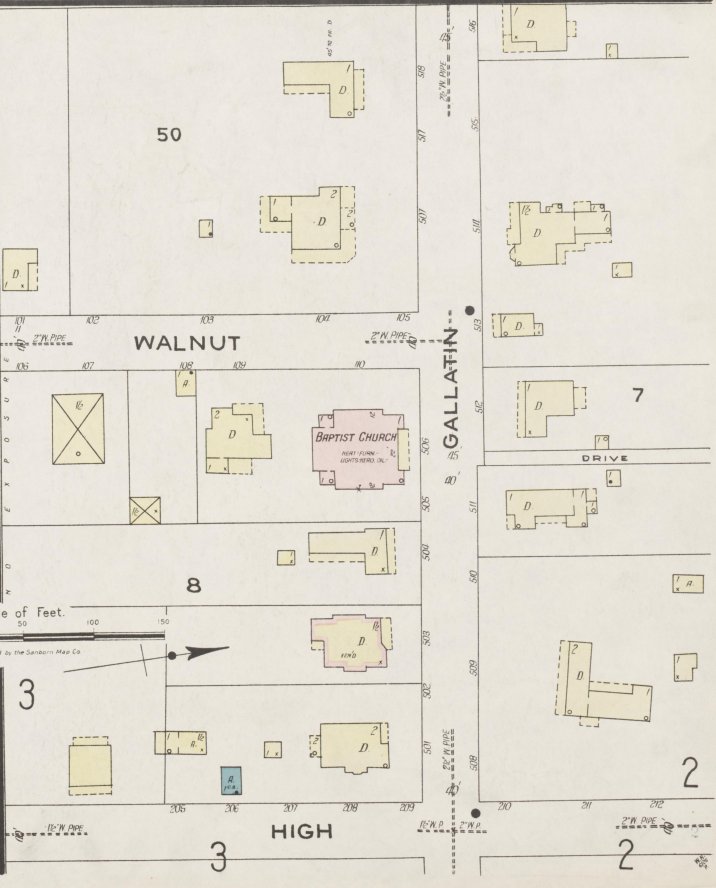
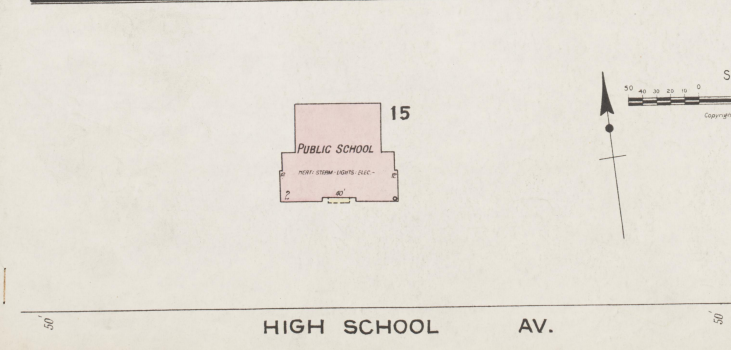
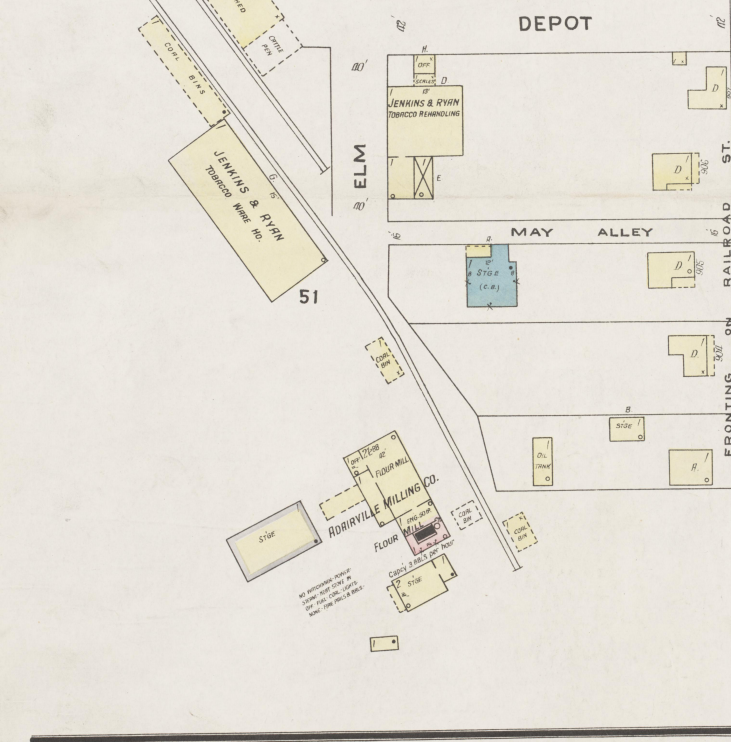
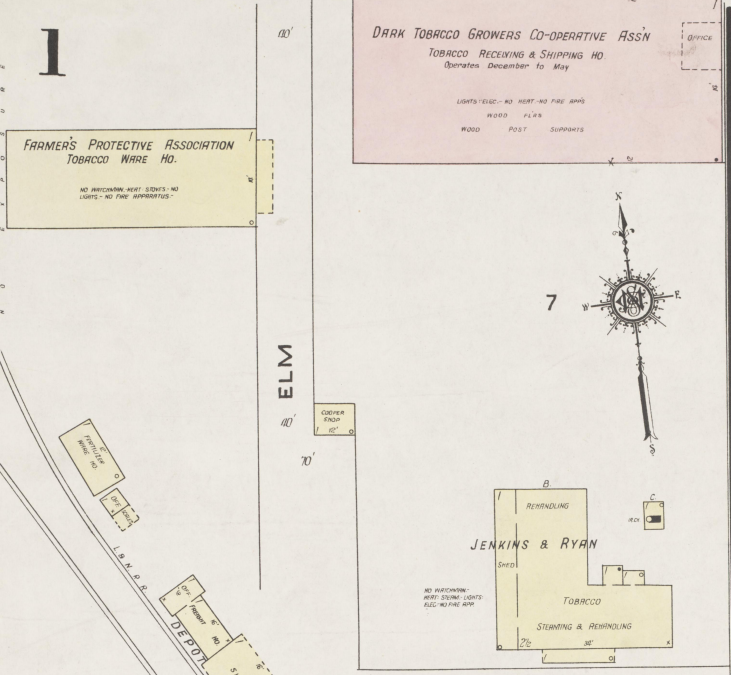


KEY

- 1. FIRE WALLS ADV. ROOF
- 2. METAL CORNER
- 3. FIRE WALLS ADV. ROOF
- 4. METAL CORNER
- 5. FIRE WALLS ADV. ROOF
- 6. METAL CORNER
- 7. FIRE WALLS ADV. ROOF
- 8. METAL CORNER
- 9. FIRE WALLS ADV. ROOF
- 10. METAL CORNER
- 11. FIRE WALLS ADV. ROOF
- 12. METAL CORNER
- 13. FIRE WALLS ADV. ROOF
- 14. METAL CORNER
- 15. FIRE WALLS ADV. ROOF
- 16. METAL CORNER
- 17. FIRE WALLS ADV. ROOF
- 18. METAL CORNER
- 19. FIRE WALLS ADV. ROOF
- 20. METAL CORNER
- 21. FIRE WALLS ADV. ROOF
- 22. METAL CORNER
- 23. FIRE WALLS ADV. ROOF
- 24. METAL CORNER
- 25. FIRE WALLS ADV. ROOF
- 26. METAL CORNER
- 27. FIRE WALLS ADV. ROOF
- 28. METAL CORNER
- 29. FIRE WALLS ADV. ROOF
- 30. METAL CORNER
- 31. FIRE WALLS ADV. ROOF
- 32. METAL CORNER
- 33. FIRE WALLS ADV. ROOF
- 34. METAL CORNER
- 35. FIRE WALLS ADV. ROOF
- 36. METAL CORNER
- 37. FIRE WALLS ADV. ROOF
- 38. METAL CORNER
- 39. FIRE WALLS ADV. ROOF
- 40. METAL CORNER
- 41. FIRE WALLS ADV. ROOF
- 42. METAL CORNER
- 43. FIRE WALLS ADV. ROOF
- 44. METAL CORNER
- 45. FIRE WALLS ADV. ROOF
- 46. METAL CORNER
- 47. FIRE WALLS ADV. ROOF
- 48. METAL CORNER
- 49. FIRE WALLS ADV. ROOF
- 50. METAL CORNER
- 51. FIRE WALLS ADV. ROOF
- 52. METAL CORNER
- 53. FIRE WALLS ADV. ROOF
- 54. METAL CORNER
- 55. FIRE WALLS ADV. ROOF
- 56. METAL CORNER
- 57. FIRE WALLS ADV. ROOF
- 58. METAL CORNER
- 59. FIRE WALLS ADV. ROOF
- 60. METAL CORNER
- 61. FIRE WALLS ADV. ROOF
- 62. METAL CORNER
- 63. FIRE WALLS ADV. ROOF
- 64. METAL CORNER
- 65. FIRE WALLS ADV. ROOF
- 66. METAL CORNER
- 67. FIRE WALLS ADV. ROOF
- 68. METAL CORNER
- 69. FIRE WALLS ADV. ROOF
- 70. METAL CORNER
- 71. FIRE WALLS ADV. ROOF
- 72. METAL CORNER
- 73. FIRE WALLS ADV. ROOF
- 74. METAL CORNER
- 75. FIRE WALLS ADV. ROOF
- 76. METAL CORNER
- 77. FIRE WALLS ADV. ROOF
- 78. METAL CORNER
- 79. FIRE WALLS ADV. ROOF
- 80. METAL CORNER
- 81. FIRE WALLS ADV. ROOF
- 82. METAL CORNER
- 83. FIRE WALLS ADV. ROOF
- 84. METAL CORNER
- 85. FIRE WALLS ADV. ROOF
- 86. METAL CORNER
- 87. FIRE WALLS ADV. ROOF
- 88. METAL CORNER
- 89. FIRE WALLS ADV. ROOF
- 90. METAL CORNER
- 91. FIRE WALLS ADV. ROOF
- 92. METAL CORNER
- 93. FIRE WALLS ADV. ROOF
- 94. METAL CORNER
- 95. FIRE WALLS ADV. ROOF
- 96. METAL CORNER
- 97. FIRE WALLS ADV. ROOF
- 98. METAL CORNER
- 99. FIRE WALLS ADV. ROOF
- 100. METAL CORNER

INDEX

SPECIALS	NUMBER	NUMBER	
Adairville Milling Co., Flour Mill	1	Jenkins & Ryan, Tobacco W. H., &c., 1	
Baptist Church	1	L. & N. R. R. Depot	1
City Jail	1	Methodist Church	2
Christian Church	1	Morrow, J. F. & Co., Tobacco Warehouse, &c.	2 & 3
Church (Colored)	1	Post Office	2
Dark Tobacco Growers Co-operative Assoc'n, Tobacco Receiving and Shipping House	1	Presbyterian Church	2
Farmer's Protective Assoc'n, Tobacco Warehouse	1	Public School	1
Fire Department	1	Roberts Hotel	3

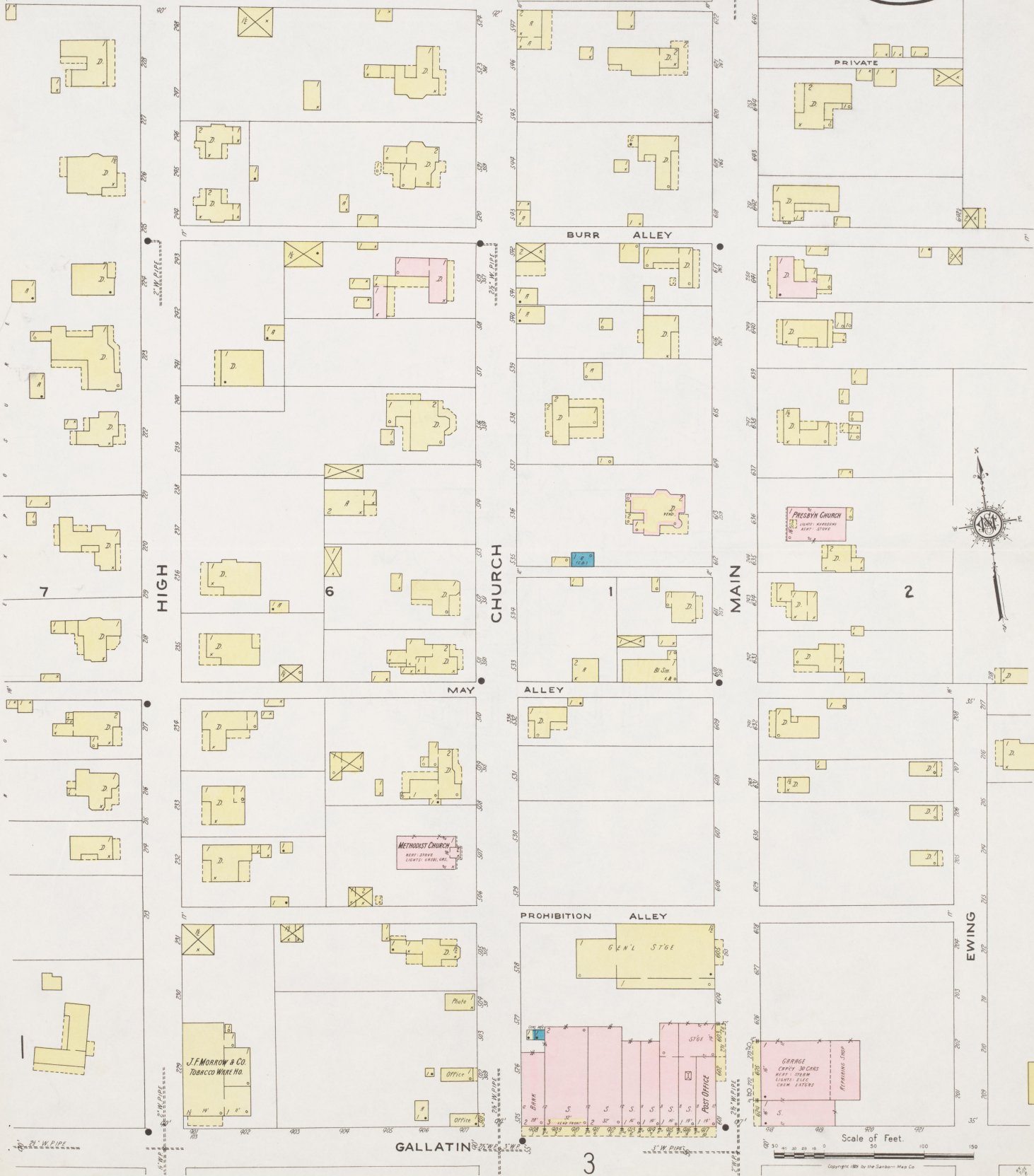


2

TOWNSEND AV.

MAY 1925
ADAIRVILLE
KY.

2



7

HIGH CHURCH

6

CHURCH

BURR ALLEY

MAIN

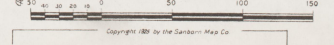
MAY ALLEY

PROHIBITION ALLEY

GALLATIN

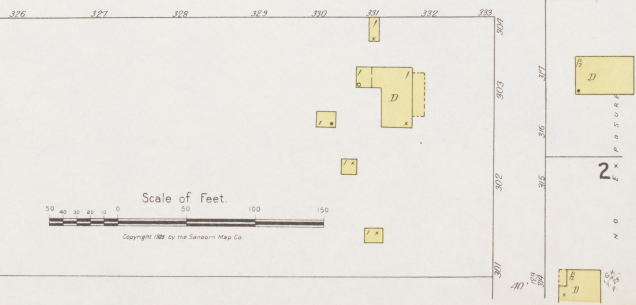
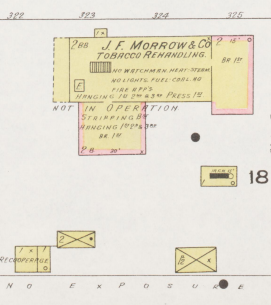
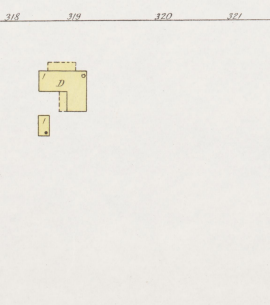
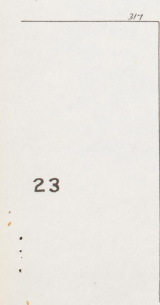
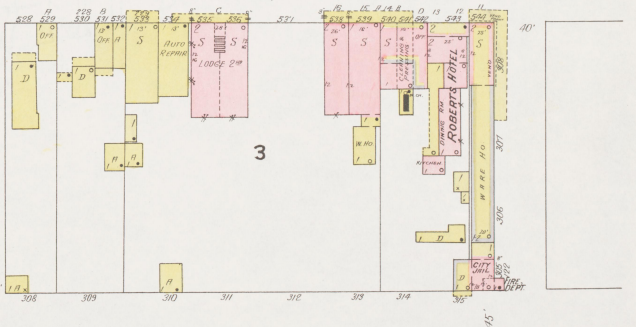
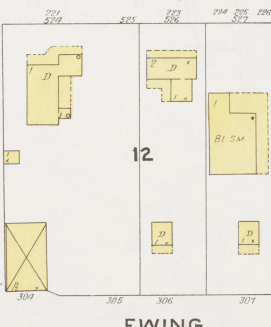
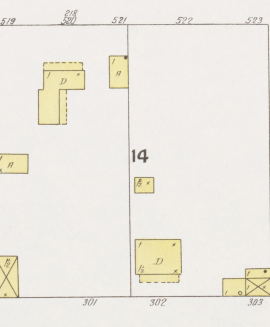
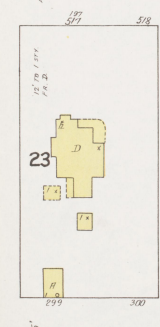
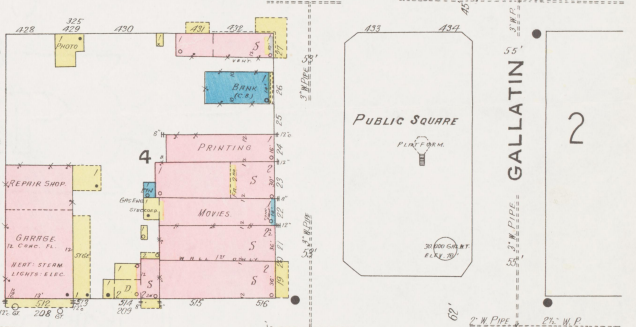
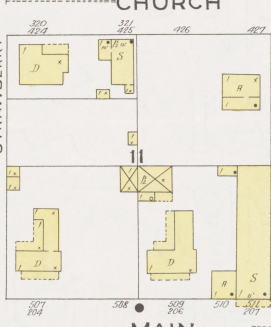
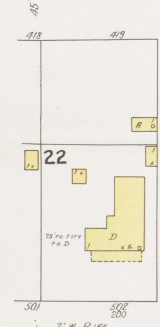
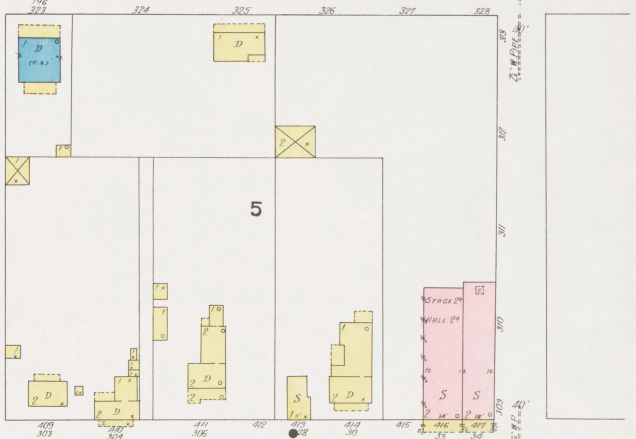
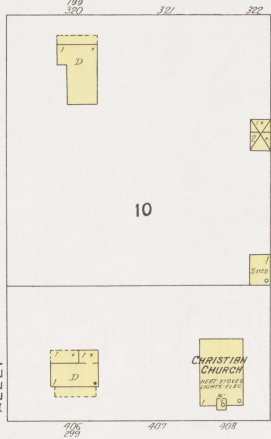
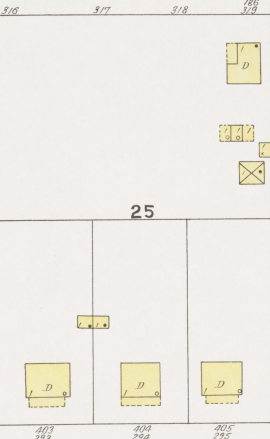
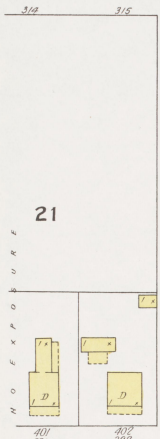
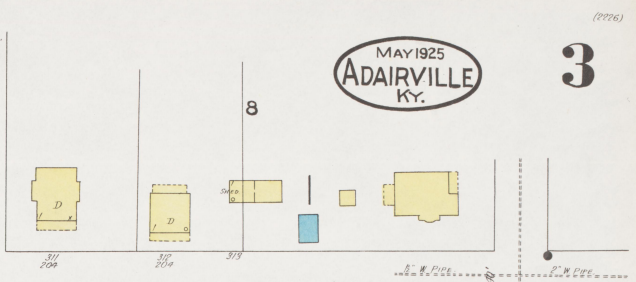
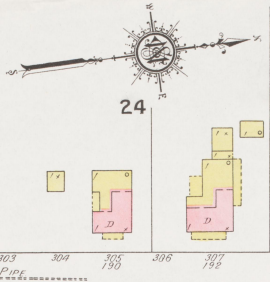
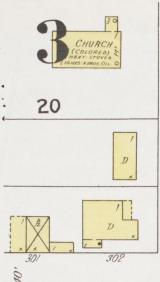


Scale of Feet.



3

Copyright 1925 by the Sanborn Map Co.



HIGH

CHURCH

MAIN

EWING

VINE

STRAWBERRY

TEMPERANCE

GALLATIN

PUBLIC SQUARE

J. F. MORROW & CO.
TOBACCO REFINING
100 WEST MAIN ST. ADAIRVILLE, KY.
IN OPERATION
SINCE 1880
P. O. BOX 100

