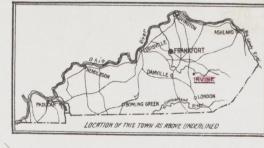


KEY

- REINFORCED CONCRETE ROOF
- STEEL ROOF
- WOOD SHAKE ROOF
- SHED ROOF
- FLAT ROOF
- OPENING WITH HOLLOW DOOR
- STANDARD
- WINDOWS & DOOR SHUTTERS
- WINDOW 1ST STORY
- WINDOWS 2ND & 3RD STORIES
- STAIRS
- STABLE (K) - CONCRETE BLOCK BUILDINGS COLORED YELLOW FRAME
- BRICK
- STONE
- BROWN FIRE PROOF
- INDICATES UNIMPROVED
- FIRE STATION, AS SHOWN IN KEY MAP
- ALTERNATE STREET NUMBERS ARE ACTUAL
- CONSECUTIVE STREET NOS ARE ARBITRARY



SANBORN MAP COMPANY
 POPULATION 6000
 PREVAILING WINDS WEST
 FOR WATER FACILITIES AND FIRE DEPARTMENT, SEE REPORT
IRVINE
 ESTILL COUNTY
 KENTUCKY
 MAY 1923
 NEW YORK

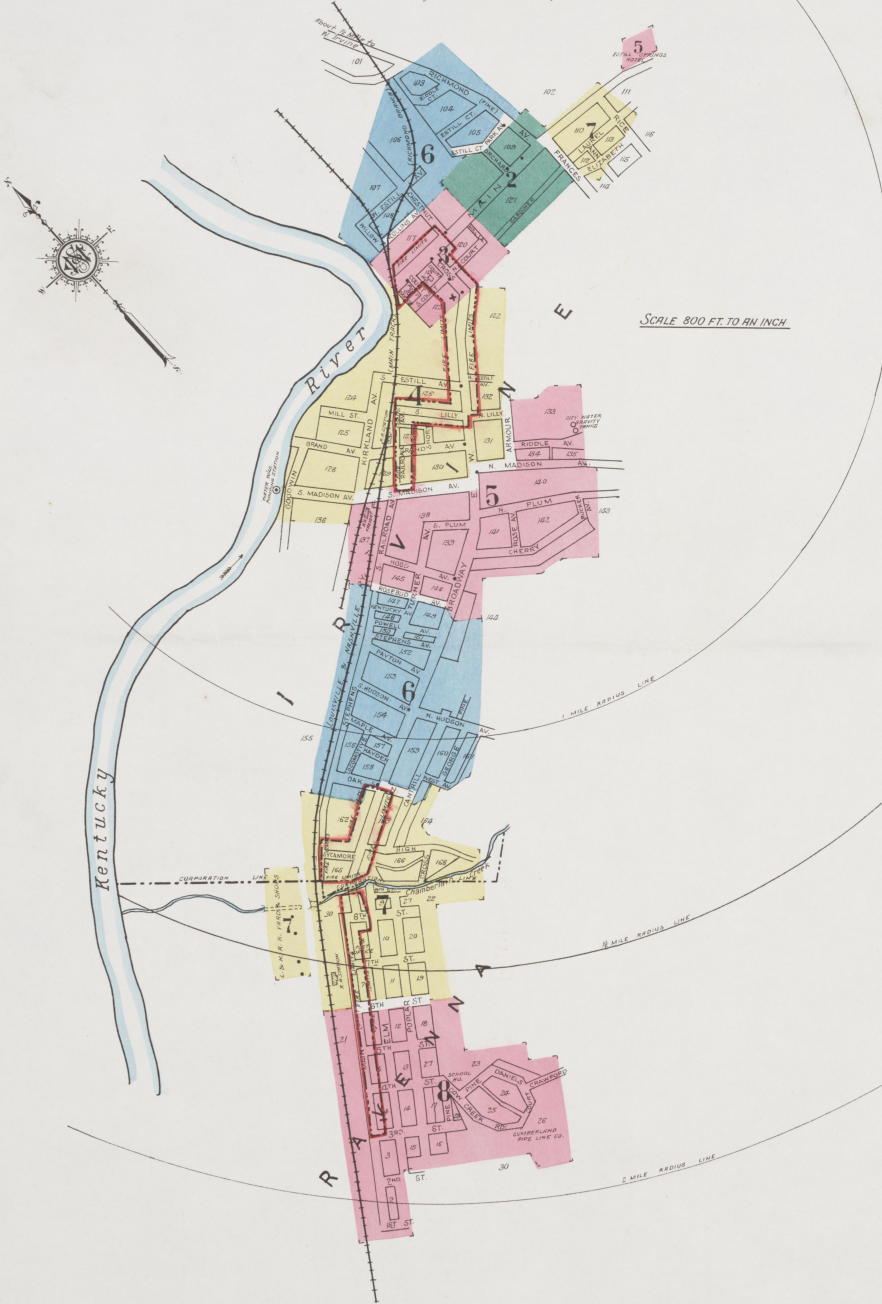
INCLUDING
RAVENNA & WEST IRVINE

WATER FACILITIES:
 Gravity & direct pressure system 2 Gould electrical triplex pumps capacity 250 gals. per min. Drawing from Kentucky River & pumping to 2 650 gal. gravity water tanks on hill east of town & reservoirs North & Cross streets. Average daily consumption 85000 gals. Normal pressure 70 lbs. per sq. in. size of mains 2 1/2". Length of mains about 2 1/2 miles. No double hydrants system installed in city.

FIRE DEPT.
 AT IRVINE - Volunteer (has organized a men. One auto. combi. hose & double cylinder chemical wagon with two 2 1/2" standard cotton hose & 200' chemical hose.
 AT RAVENNA - Volunteer (has organized) One auto. combi. hose & chemical wagon. No hose except 200' chemical hose.
 Fire alarm - Bell on Court Ho & Whistle at R. R. Shops at Ravenna

NOTE
 No Public Water Mains system at Ravenna.
 Business streets paved. Public lighting electric. Grades level in business section.

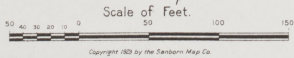
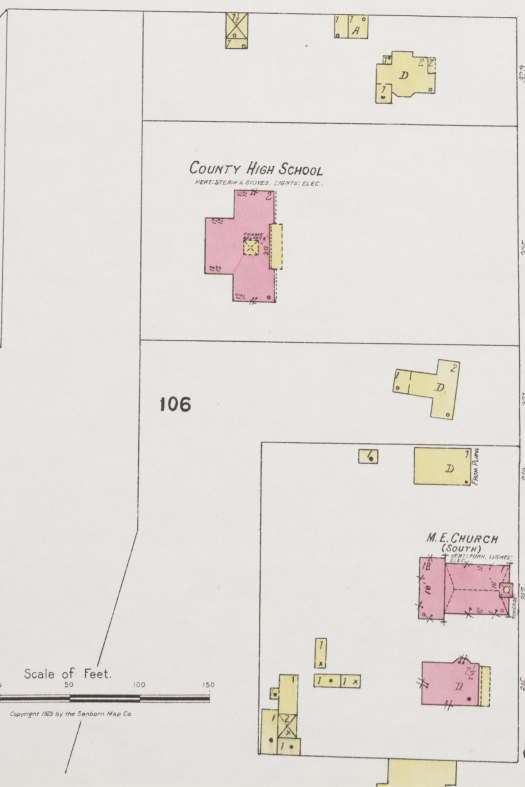
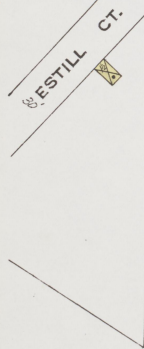
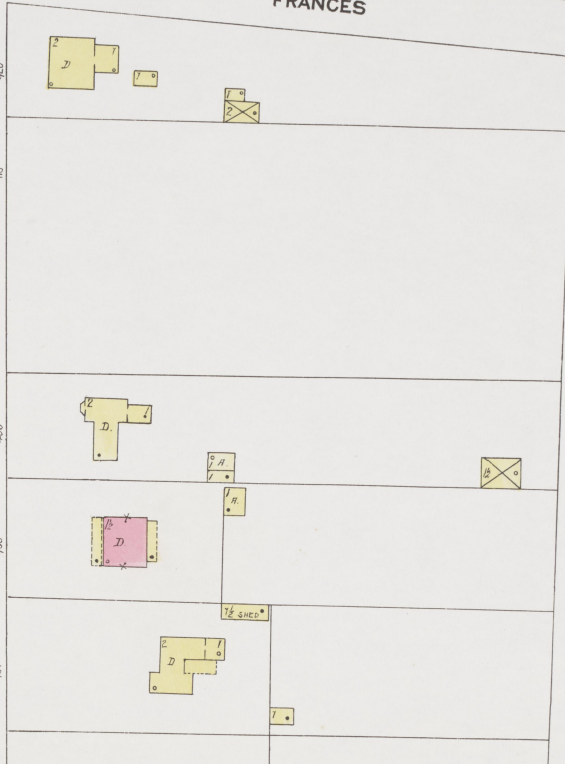
SCALE 800 FT. TO AN INCH



INDEX

STREETS	SHEET	STREET	SHEET
Ann	A	Rose Bud Ave.	5 & 6
Armour	4 & 5	Rucker Ave.	5
Back Alley	B	Second	8
Broadway	100-111	Seventh	7
"	102-103	Sixth	7 & 8
"	104-105	Station Camp Road, at W. Irvine	5 & 6
"	106-107	Stephens Ave.	5 & 6
"	108-109	Sycamore Ave.	7
"	110-111	Third	8
Cantrill	6 & 7	Turner Ave.	5 & 6
Cherry	100-103	Upper, see S. Court	
Clinton	3 & 4	West Ave.	6
Collins Ave.	3 & 4	Willow	6
Court	3 & 4		
"	S		
Low Creek Road	3 & 4		
Crawford	3 & 4		
Cross	3 & 4		
Danicle	D		
Court	8	SPECIALS	
Eighth	E	Ballard-Masters Co., Wholesale Groceries	8
Elizabeth	7	Baptist Church (Colored)	3
Elm	7 & 8	Brandenburg & Wallace, Blacksmiths, &c.	3
Estill Ave., N.	7 & 8	Buckshire, H. J., Livery	6
"	W		
"	Court	2 & 3	Chetman, S. & Co., Furniture & Auto Supplies
Fifth	F	Church of God	3
First	8	Commercial Hotel	3
Fourth	8	County Court House and Jail	3
Frances	2 & 3	High School	3
Gardner	2 & 3	Cox, T., Planing Mill	3
George	6	Cumberland Pipe Line Co.	3
Goodwin	4		
Grand Ave.	4		
Hayden	H		
High	6	Drake, F. Y., & Son, Lumber Yard	7
Hood Ave.	6	Estill Springs Hotel	5
Hudson Ave., N.	6	Fire Department at Ravenna	3
"	S	First Baptist Church at Ravenna	3
Kentucky Ave.	6	Free Methodist Episcopal Church	3
Kirkland Ave.	4		
Laurel	L	Gains Theatre, Motion Pictures	3
Lilly, N.	4 & 5	Harris Moving Pictures	3
Locomotive Ave.	4	Hazard Lumber and Supply Co., Sheds, &c.	4
Madison Ave., N.	100-120		
"	101-121	Indian Refining Co., Tank Filling Station	6
"	102-122	Irvine Public School	4
"	103-123		
"	104-124	Kentucky Coal and Fuel Co.	4
"	105-125	Utilities Co., Electric Light Plant	4
"	106-126		
"	107-127		
"	108-128		
"	109-129		
"	110-130		
Main	100-314		
"	315-425		
"	426-537		
"	538-649		
"	650-761		
Maple Ave.	6		
Mill Lane	M		
Ninth	N		
Oak, at Ravenna, see Main	6 & 7		
"	S		
Orchard	O		
Park Ave.	P		
Payton Ave.	2 & 3		
Pike, see Richmond Ave.	2 & 3		
Pine, S.	6 & 8		
Pump, N. S.	100-143		
Poplar	7 & 8		
Powell Ave.	6		
Railroad Ave.	R		
Rice, S.	4		
Richmond Ave.	2 & 3		
"	Pike, at W. Irvine		
Riddle Ave.	5 & 6		
Rose Ave.	6		

* Indicates only one side of Street shown.

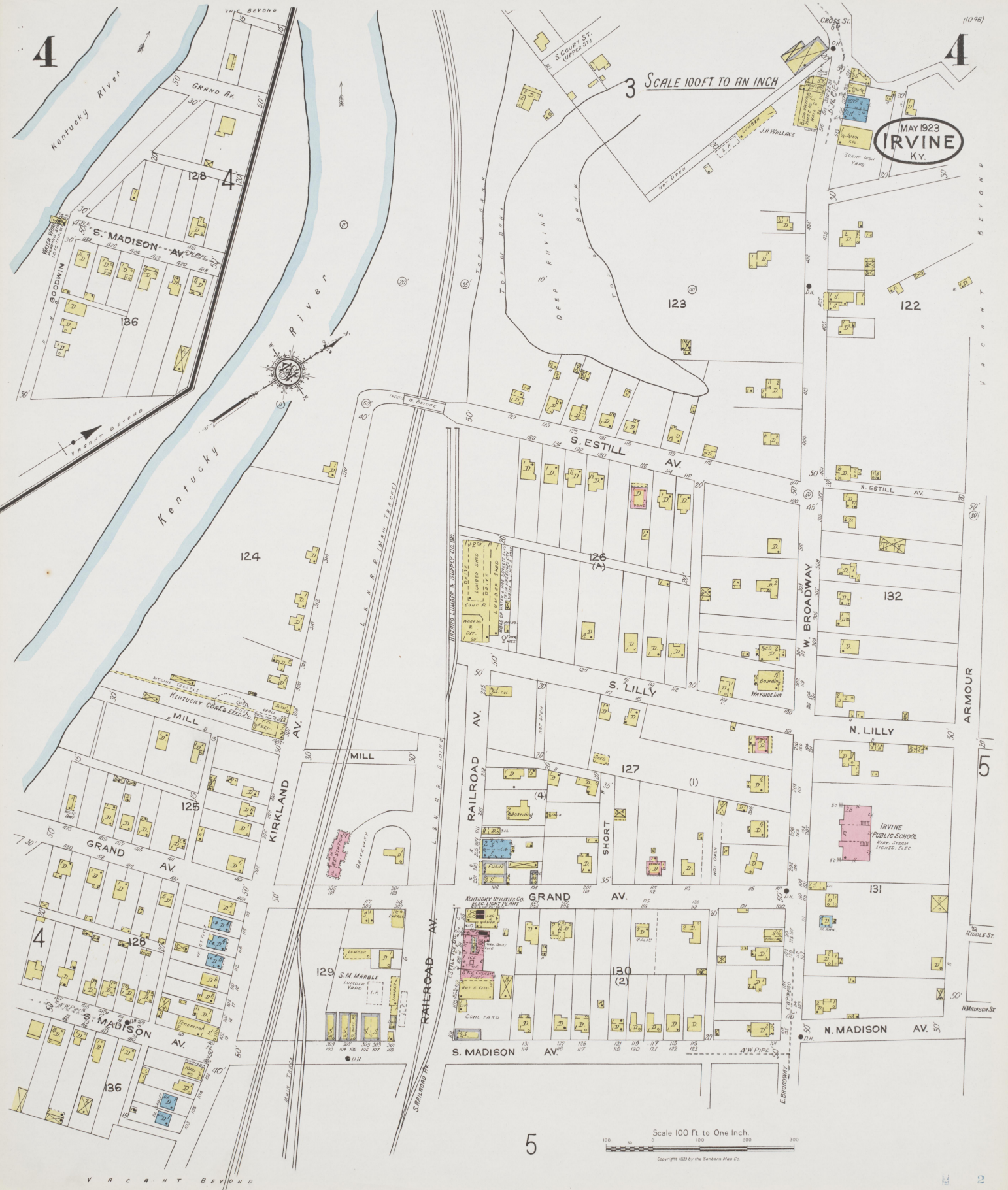


4

4

SCALE 100 FT TO AN INCH

MAY 1923
IRVINE
KY.



5

Scale 100 Ft to One Inch.

Copyright 1923 by the Sanborn Map Co.

5

5

MAY 1923
IRVINE
KY.

SCALE 100 FT. TO AN INCH



Scale 100 Ft. to One Inch.
Copyright 1923 by the Sanborn Map Co.

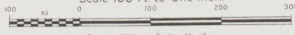
1 SIX FR. DWA
BEYOND



MAY 1923
IRVINE
KY

SCALE 100 FT TO AN INCH

Scale 100 Ft. to One Inch.



Copyright 1923 by the Sanborn Map Co.

6

6

5

5

2

106

3

7

7

V
R
C
R
A
N
T
B
E
Y
O
N
D

E
I
R
V
I
N
E

Kentucky River

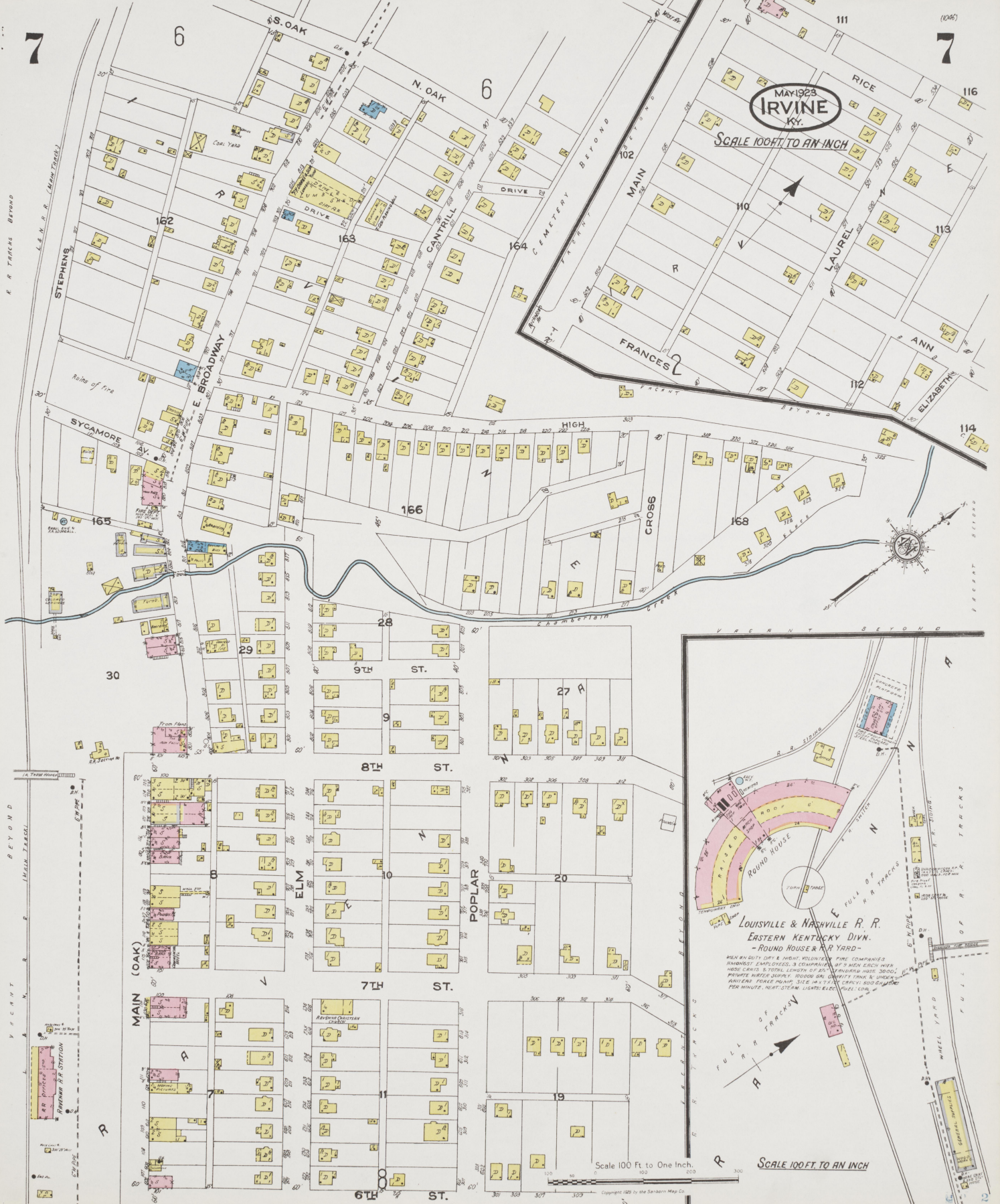
L.L. BUCKSHIRE
LIVERY

ALUMINUM REFINING CO. TRUNK FILLING STATION

CANTRILL

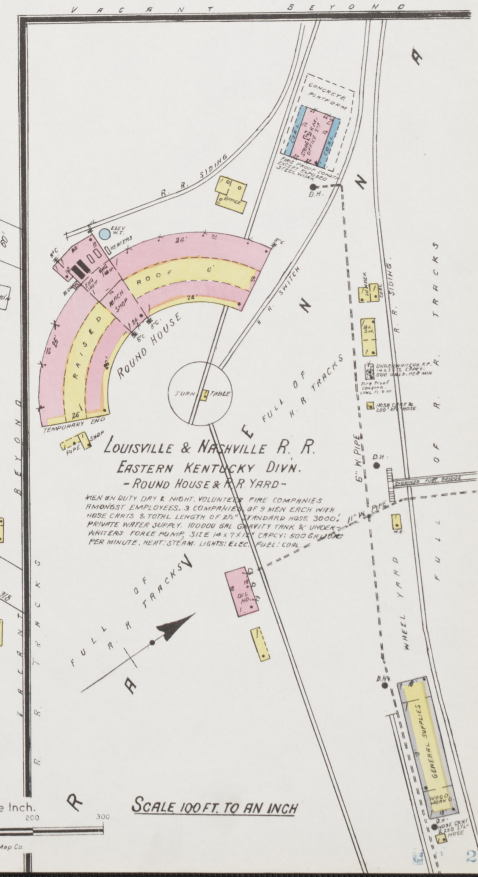
GEORGE

(1046)



MAY 1923
IRVINE
 KY.

SCALE 100 FT. TO AN INCH



LOUISVILLE & NASHVILLE R. R.
 EASTERN KENTUCKY DIVN.
 - ROUND HOUSE & R. YARD -

ALL RAILROADS ARE CONSIDERED AS ONE COMPANY
 HIGHEST EMPLOYERS & CONSUMERS ARE HIGH EACH YEAR
 HAVE CRUIS & TOTAL LENGTH OF 25' (INCLUDING MORE 3000')
 PRIVATE WATER SUPPLY, HOUSES AND CONCRETE TANKS & UNDER
 WHITE AND FEMALE MANS 312' x 4 1/2' CAPACITY 1000 GAL PER
 HOUR. HEIGHT 10' 1/2' USUAL 10' 1/2' 10' 1/2'

SCALE 100 FT. TO AN INCH

Scale 100 Ft. to One Inch.

Copyright 1923 by the Da-tern Map Co.

