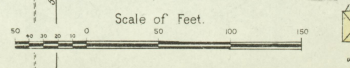
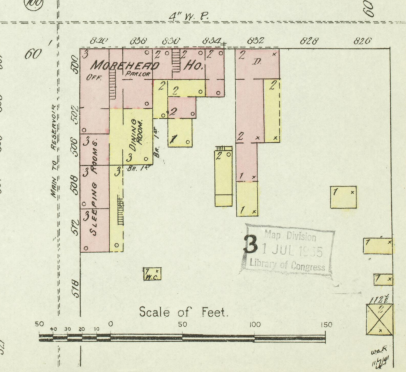
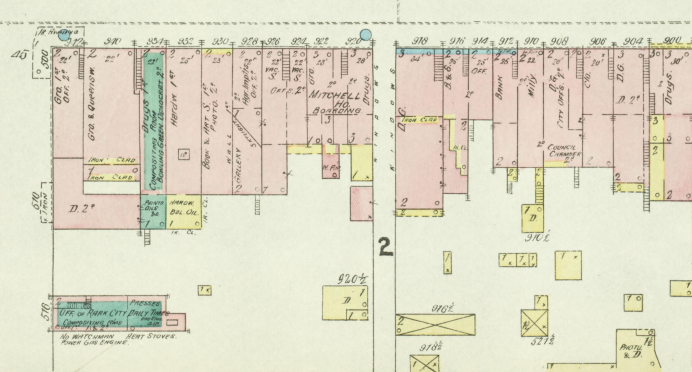
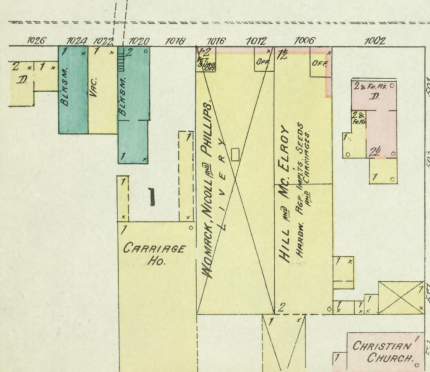
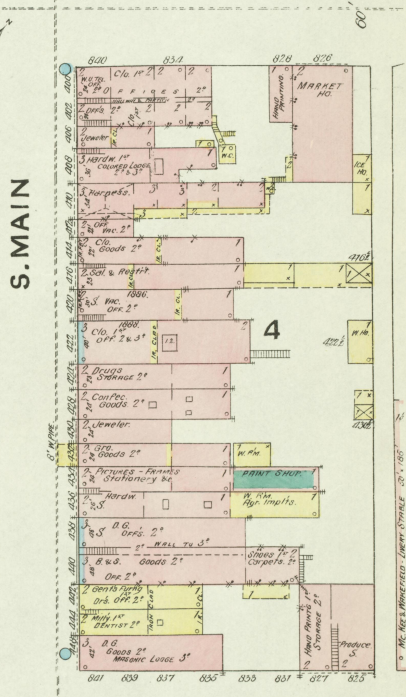
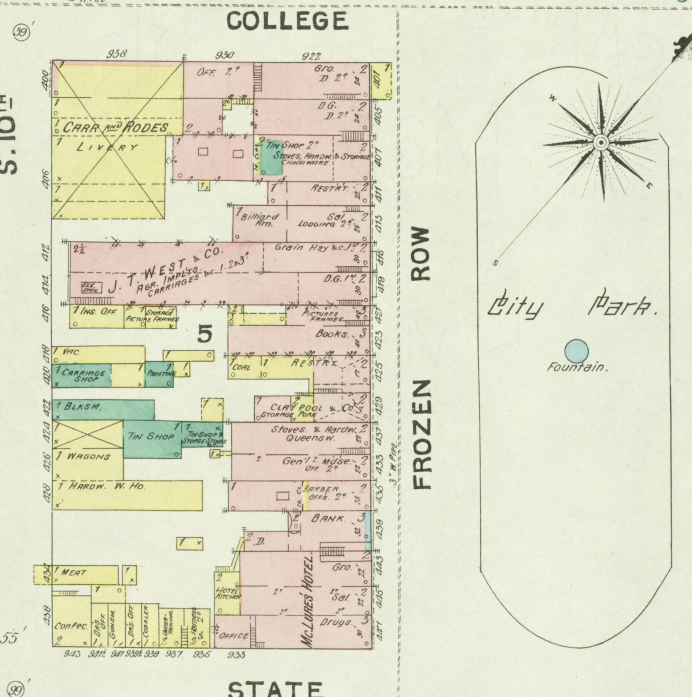
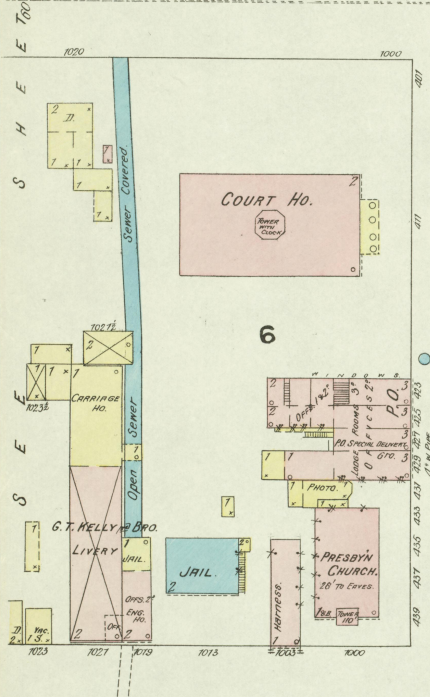
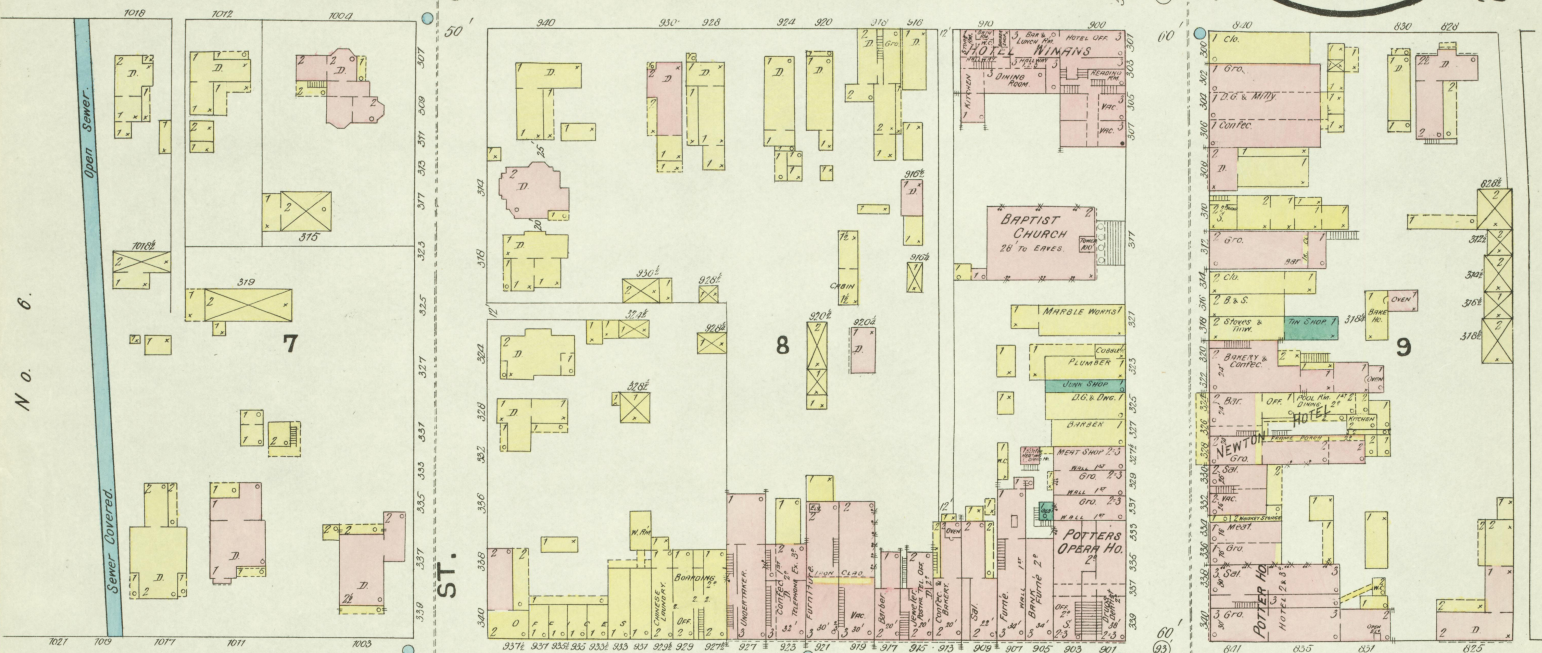


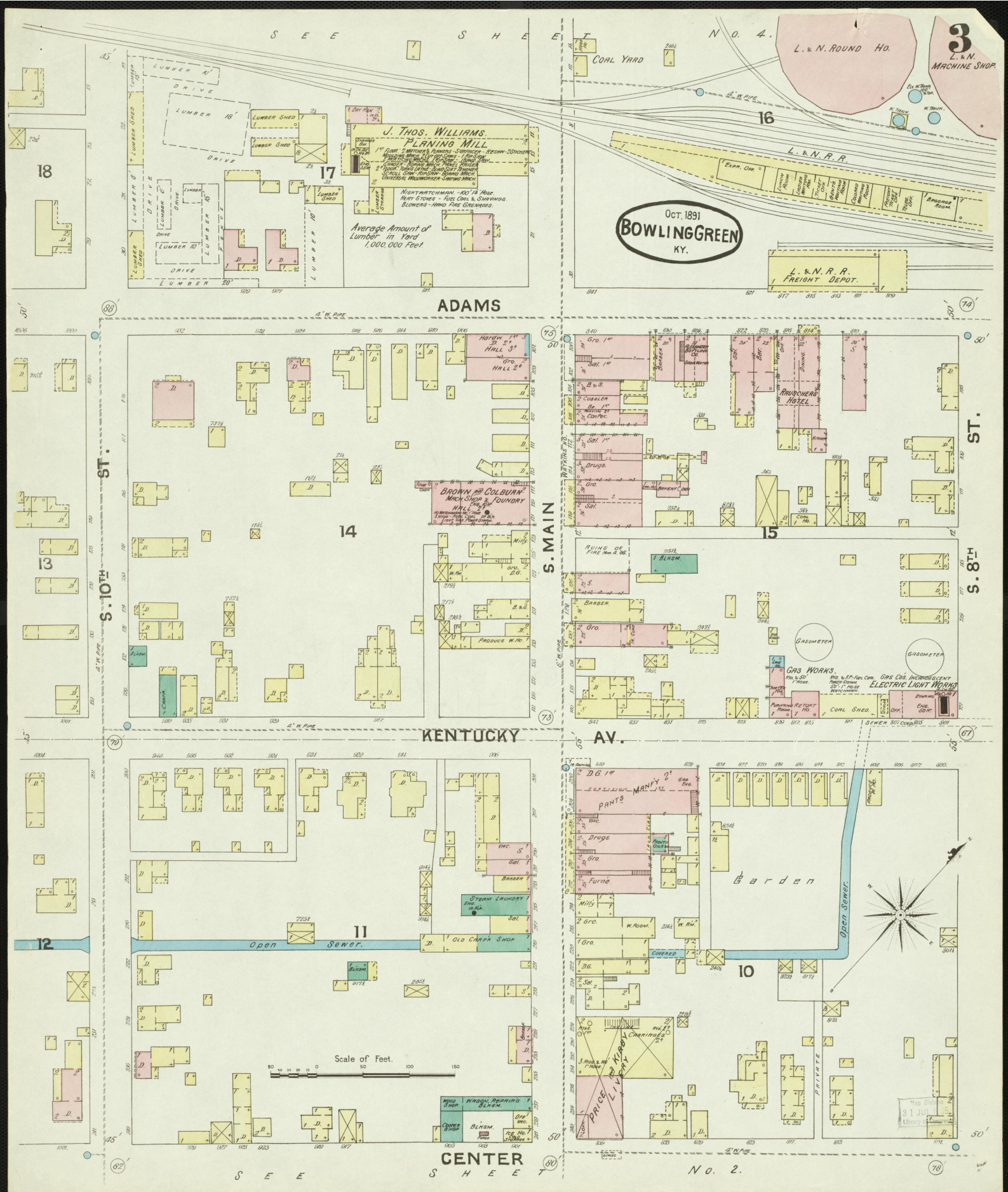
S E E

S H E E T N O.

Oct. 1891
BOWLING GREEN
KY. **2**

CENTER





3
L. & N.
MACHINE SHOP

OCT. 1891
BOWLINGGREEN
KY.

L. & N. R. R.
FREIGHT DEPOT.

ADAMS

ST.

S. 8TH

S. MAIN

KENTUCKY

AV.

CENTER

N. O. 2.

18

17

14

15

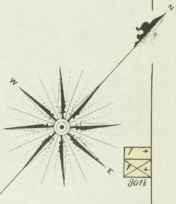
13

12

11

10

Scale of Feet.



31 JUL 1891

J. THOS. WILLIAMS
PLANING MILL
1ST FLOOR - LUMBER & BURNING - SAWMILLS - ROOMS - SHEDS
2ND FLOOR - PLANING - TRIMMING - SHEDS
3RD FLOOR - PLANING - TRIMMING - SHEDS
4TH FLOOR - PLANING - TRIMMING - SHEDS
5TH FLOOR - PLANING - TRIMMING - SHEDS
6TH FLOOR - PLANING - TRIMMING - SHEDS
7TH FLOOR - PLANING - TRIMMING - SHEDS
8TH FLOOR - PLANING - TRIMMING - SHEDS
9TH FLOOR - PLANING - TRIMMING - SHEDS
10TH FLOOR - PLANING - TRIMMING - SHEDS
11TH FLOOR - PLANING - TRIMMING - SHEDS
12TH FLOOR - PLANING - TRIMMING - SHEDS
13TH FLOOR - PLANING - TRIMMING - SHEDS
14TH FLOOR - PLANING - TRIMMING - SHEDS
15TH FLOOR - PLANING - TRIMMING - SHEDS
16TH FLOOR - PLANING - TRIMMING - SHEDS
17TH FLOOR - PLANING - TRIMMING - SHEDS
18TH FLOOR - PLANING - TRIMMING - SHEDS
19TH FLOOR - PLANING - TRIMMING - SHEDS
20TH FLOOR - PLANING - TRIMMING - SHEDS
21ST FLOOR - PLANING - TRIMMING - SHEDS
22ND FLOOR - PLANING - TRIMMING - SHEDS
23RD FLOOR - PLANING - TRIMMING - SHEDS
24TH FLOOR - PLANING - TRIMMING - SHEDS
25TH FLOOR - PLANING - TRIMMING - SHEDS
26TH FLOOR - PLANING - TRIMMING - SHEDS
27TH FLOOR - PLANING - TRIMMING - SHEDS
28TH FLOOR - PLANING - TRIMMING - SHEDS
29TH FLOOR - PLANING - TRIMMING - SHEDS
30TH FLOOR - PLANING - TRIMMING - SHEDS
31ST FLOOR - PLANING - TRIMMING - SHEDS
32ND FLOOR - PLANING - TRIMMING - SHEDS
33RD FLOOR - PLANING - TRIMMING - SHEDS
34TH FLOOR - PLANING - TRIMMING - SHEDS
35TH FLOOR - PLANING - TRIMMING - SHEDS
36TH FLOOR - PLANING - TRIMMING - SHEDS
37TH FLOOR - PLANING - TRIMMING - SHEDS
38TH FLOOR - PLANING - TRIMMING - SHEDS
39TH FLOOR - PLANING - TRIMMING - SHEDS
40TH FLOOR - PLANING - TRIMMING - SHEDS
41ST FLOOR - PLANING - TRIMMING - SHEDS
42ND FLOOR - PLANING - TRIMMING - SHEDS
43RD FLOOR - PLANING - TRIMMING - SHEDS
44TH FLOOR - PLANING - TRIMMING - SHEDS
45TH FLOOR - PLANING - TRIMMING - SHEDS
46TH FLOOR - PLANING - TRIMMING - SHEDS
47TH FLOOR - PLANING - TRIMMING - SHEDS
48TH FLOOR - PLANING - TRIMMING - SHEDS
49TH FLOOR - PLANING - TRIMMING - SHEDS
50TH FLOOR - PLANING - TRIMMING - SHEDS
51ST FLOOR - PLANING - TRIMMING - SHEDS
52ND FLOOR - PLANING - TRIMMING - SHEDS
53RD FLOOR - PLANING - TRIMMING - SHEDS
54TH FLOOR - PLANING - TRIMMING - SHEDS
55TH FLOOR - PLANING - TRIMMING - SHEDS
56TH FLOOR - PLANING - TRIMMING - SHEDS
57TH FLOOR - PLANING - TRIMMING - SHEDS
58TH FLOOR - PLANING - TRIMMING - SHEDS
59TH FLOOR - PLANING - TRIMMING - SHEDS
60TH FLOOR - PLANING - TRIMMING - SHEDS
61ST FLOOR - PLANING - TRIMMING - SHEDS
62ND FLOOR - PLANING - TRIMMING - SHEDS
63RD FLOOR - PLANING - TRIMMING - SHEDS
64TH FLOOR - PLANING - TRIMMING - SHEDS
65TH FLOOR - PLANING - TRIMMING - SHEDS
66TH FLOOR - PLANING - TRIMMING - SHEDS
67TH FLOOR - PLANING - TRIMMING - SHEDS
68TH FLOOR - PLANING - TRIMMING - SHEDS
69TH FLOOR - PLANING - TRIMMING - SHEDS
70TH FLOOR - PLANING - TRIMMING - SHEDS
71ST FLOOR - PLANING - TRIMMING - SHEDS
72ND FLOOR - PLANING - TRIMMING - SHEDS
73RD FLOOR - PLANING - TRIMMING - SHEDS
74TH FLOOR - PLANING - TRIMMING - SHEDS
75TH FLOOR - PLANING - TRIMMING - SHEDS
76TH FLOOR - PLANING - TRIMMING - SHEDS
77TH FLOOR - PLANING - TRIMMING - SHEDS
78TH FLOOR - PLANING - TRIMMING - SHEDS
79TH FLOOR - PLANING - TRIMMING - SHEDS
80TH FLOOR - PLANING - TRIMMING - SHEDS
81ST FLOOR - PLANING - TRIMMING - SHEDS
82ND FLOOR - PLANING - TRIMMING - SHEDS
83RD FLOOR - PLANING - TRIMMING - SHEDS
84TH FLOOR - PLANING - TRIMMING - SHEDS
85TH FLOOR - PLANING - TRIMMING - SHEDS
86TH FLOOR - PLANING - TRIMMING - SHEDS
87TH FLOOR - PLANING - TRIMMING - SHEDS
88TH FLOOR - PLANING - TRIMMING - SHEDS
89TH FLOOR - PLANING - TRIMMING - SHEDS
90TH FLOOR - PLANING - TRIMMING - SHEDS
91ST FLOOR - PLANING - TRIMMING - SHEDS
92ND FLOOR - PLANING - TRIMMING - SHEDS
93RD FLOOR - PLANING - TRIMMING - SHEDS
94TH FLOOR - PLANING - TRIMMING - SHEDS
95TH FLOOR - PLANING - TRIMMING - SHEDS
96TH FLOOR - PLANING - TRIMMING - SHEDS
97TH FLOOR - PLANING - TRIMMING - SHEDS
98TH FLOOR - PLANING - TRIMMING - SHEDS
99TH FLOOR - PLANING - TRIMMING - SHEDS
100TH FLOOR - PLANING - TRIMMING - SHEDS

Average Amount of
Lumber in Yard
1,000,000 Feet

RAUSCHER HOTEL
2 COOKS
2 BARBERS
2 GROOMS
2 PORTERS
2 WAITERS
2 CLEANERS
2 LAUNDRESSES
2 BAKERS
2 BUTCHERS
2 MILLINERS
2 HATMAKERS
2 SHOEMAKERS
2 CARPENTERS
2 JOINERS
2 PAINTERS
2 PLUMBERS
2 ELECTRICIANS
2 MECHANICS
2 BLACKSMITHS
2 WAGGONERS
2 COACHMAKERS
2 SADDLERS
2 SHERRIFFS
2 CONSTABLES
2 DEPUTY SHERIFFS
2 DEPUTY CONSTABLES
2 DEPUTY CLERKS
2 DEPUTY TOLLS
2 DEPUTY TAX COLLECTORS
2 DEPUTY JUDGES
2 DEPUTY PROSECUTORS
2 DEPUTY ATTORNEYS
2 DEPUTY SHERIFFS
2 DEPUTY CONSTABLES
2 DEPUTY CLERKS
2 DEPUTY TOLLS
2 DEPUTY TAX COLLECTORS
2 DEPUTY JUDGES
2 DEPUTY PROSECUTORS
2 DEPUTY ATTORNEYS

BROWN and COLBURN
MACHINERY & FOUNDRY
2 MILLINERS
2 HATMAKERS
2 SHOEMAKERS
2 CARPENTERS
2 JOINERS
2 PAINTERS
2 PLUMBERS
2 ELECTRICIANS
2 MECHANICS
2 BLACKSMITHS
2 WAGGONERS
2 COACHMAKERS
2 SADDLERS
2 SHERRIFFS
2 CONSTABLES
2 DEPUTY SHERIFFS
2 DEPUTY CONSTABLES
2 DEPUTY CLERKS
2 DEPUTY TOLLS
2 DEPUTY TAX COLLECTORS
2 DEPUTY JUDGES
2 DEPUTY PROSECUTORS
2 DEPUTY ATTORNEYS

MANLY'S
2 DRUGS
2 FURNS
2 MILLS
2 WAGONS
2 COVERS
2 PRIVATE

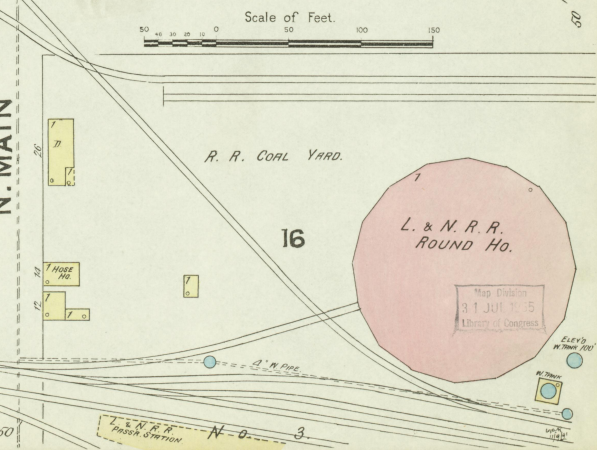
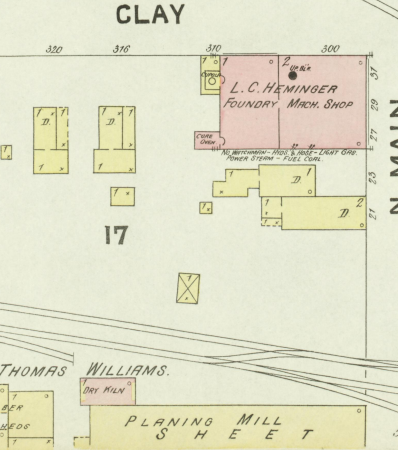
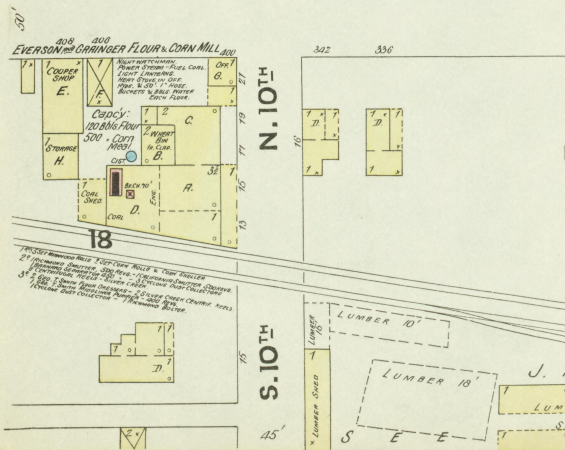
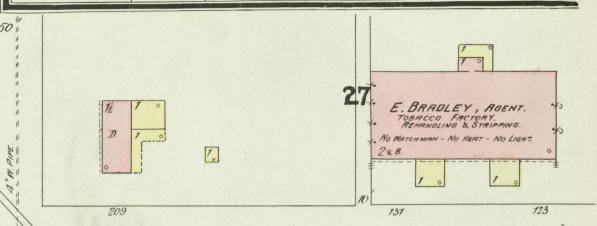
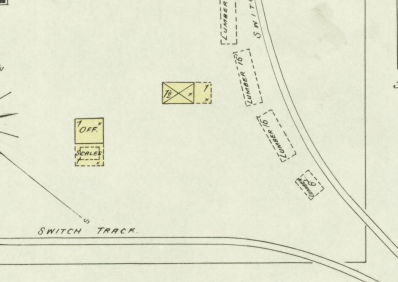
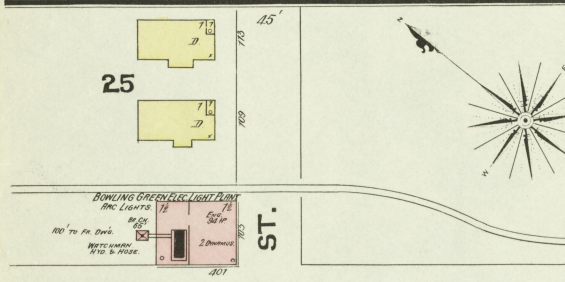
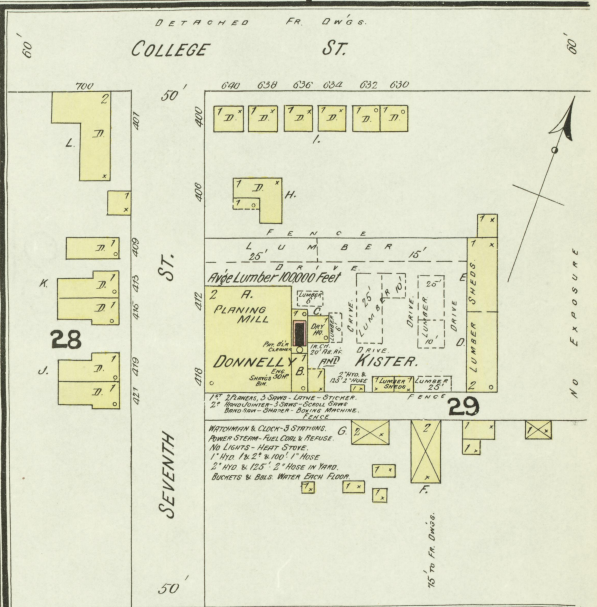
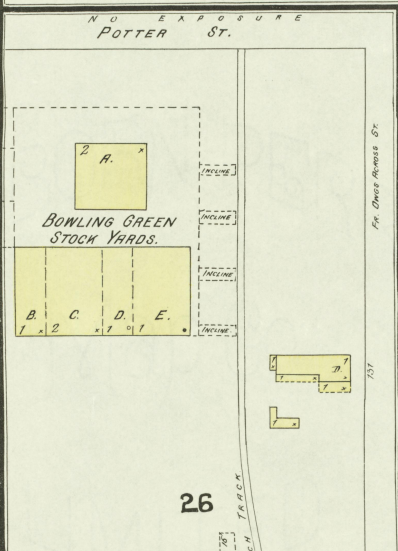
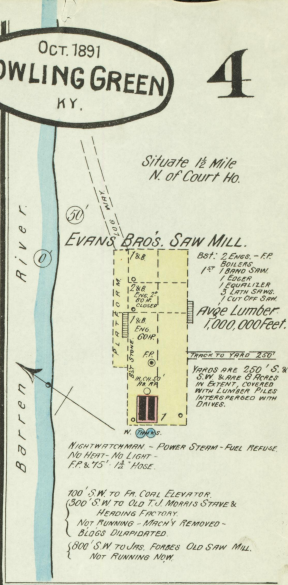
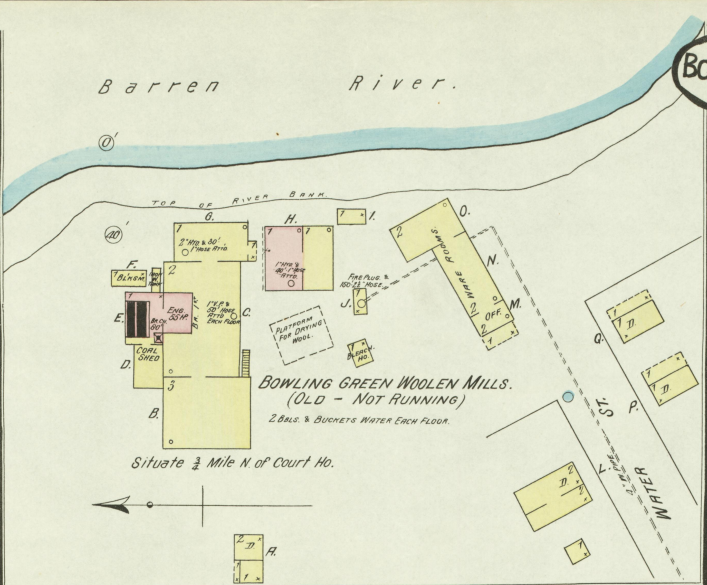
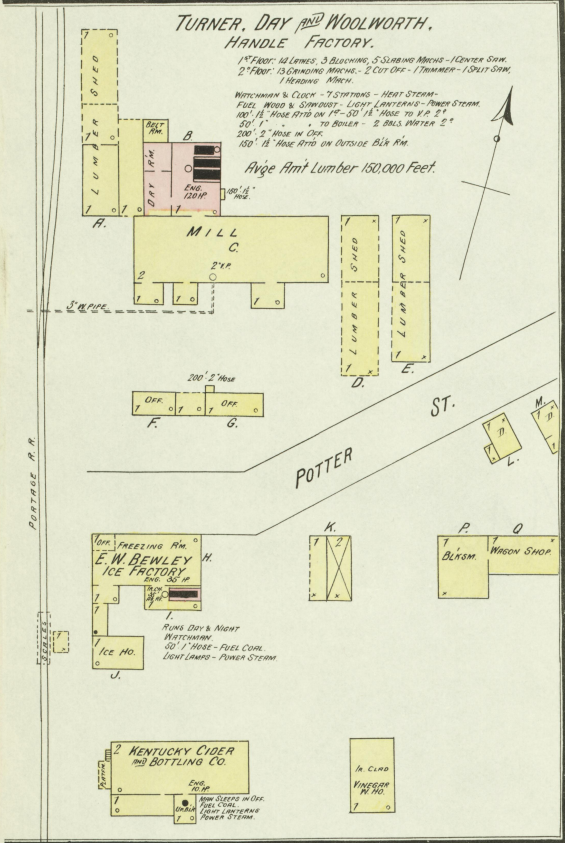
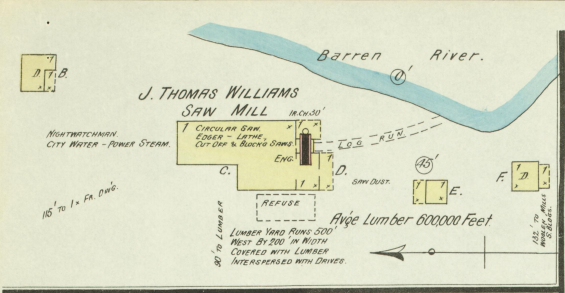
PRICE
2 PRIVATE

WAGGON REPAIRS
2 PRIVATE

BLISS
2 PRIVATE

BLISS
2 PRIVATE

BLISS
2 PRIVATE



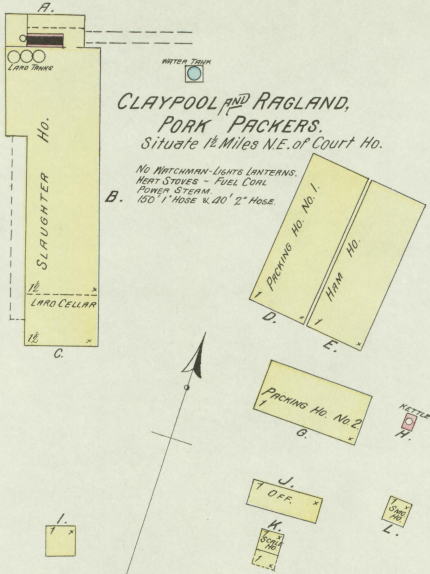
Scale of Feet.
0 50 100 150

Map Edition
31 JUL 7 '95
Library of Congress

OCT. 1891
BOWLING GREEN
KY.

**CLAYPOOL AND RAGLAND,
PORK PACKERS.**
Situate 1 1/2 Miles N.E. of Court Ho.

NO WATCHMAN - LIGHTS LANTERNS.
HEAT STOVES - FUEL COAL
SUNSHINE STEAM
150' 1" HOSE & 20' 2" HOSE.



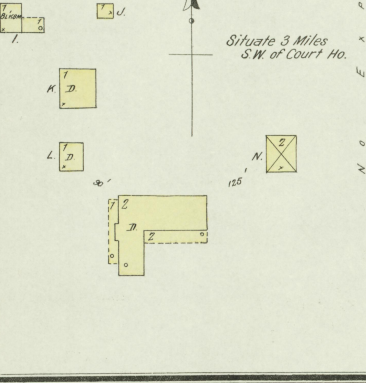
THREE SPRINGS ROAD.

**WATTS BROS AND CO.
CAVE MILL.**
1st 3 SET DRILL (MANWOOD)
2nd 1 RICHMOND SHUTTER - 500 REVS.
3rd CHAMPION SHUTTER 500 REVS.
4th RICHMOND SHUTTER
5th RICHMOND SHUTTER
6th RICHMOND SHUTTER
7th RICHMOND SHUTTER
8th RICHMOND SHUTTER
9th RICHMOND SHUTTER
10th RICHMOND SHUTTER
11th RICHMOND SHUTTER
12th RICHMOND SHUTTER
13th RICHMOND SHUTTER
14th RICHMOND SHUTTER
15th RICHMOND SHUTTER
16th RICHMOND SHUTTER
17th RICHMOND SHUTTER
18th RICHMOND SHUTTER
19th RICHMOND SHUTTER
20th RICHMOND SHUTTER
21st RICHMOND SHUTTER
22nd RICHMOND SHUTTER
23rd RICHMOND SHUTTER
24th RICHMOND SHUTTER
25th RICHMOND SHUTTER
26th RICHMOND SHUTTER
27th RICHMOND SHUTTER
28th RICHMOND SHUTTER
29th RICHMOND SHUTTER
30th RICHMOND SHUTTER
31st RICHMOND SHUTTER
32nd RICHMOND SHUTTER
33rd RICHMOND SHUTTER
34th RICHMOND SHUTTER
35th RICHMOND SHUTTER
36th RICHMOND SHUTTER
37th RICHMOND SHUTTER
38th RICHMOND SHUTTER
39th RICHMOND SHUTTER
40th RICHMOND SHUTTER
41st RICHMOND SHUTTER
42nd RICHMOND SHUTTER
43rd RICHMOND SHUTTER
44th RICHMOND SHUTTER
45th RICHMOND SHUTTER
46th RICHMOND SHUTTER
47th RICHMOND SHUTTER
48th RICHMOND SHUTTER
49th RICHMOND SHUTTER
50th RICHMOND SHUTTER
51st RICHMOND SHUTTER
52nd RICHMOND SHUTTER
53rd RICHMOND SHUTTER
54th RICHMOND SHUTTER
55th RICHMOND SHUTTER
56th RICHMOND SHUTTER
57th RICHMOND SHUTTER
58th RICHMOND SHUTTER
59th RICHMOND SHUTTER
60th RICHMOND SHUTTER
61st RICHMOND SHUTTER
62nd RICHMOND SHUTTER
63rd RICHMOND SHUTTER
64th RICHMOND SHUTTER
65th RICHMOND SHUTTER
66th RICHMOND SHUTTER
67th RICHMOND SHUTTER
68th RICHMOND SHUTTER
69th RICHMOND SHUTTER
70th RICHMOND SHUTTER
71st RICHMOND SHUTTER
72nd RICHMOND SHUTTER
73rd RICHMOND SHUTTER
74th RICHMOND SHUTTER
75th RICHMOND SHUTTER
76th RICHMOND SHUTTER
77th RICHMOND SHUTTER
78th RICHMOND SHUTTER
79th RICHMOND SHUTTER
80th RICHMOND SHUTTER
81st RICHMOND SHUTTER
82nd RICHMOND SHUTTER
83rd RICHMOND SHUTTER
84th RICHMOND SHUTTER
85th RICHMOND SHUTTER
86th RICHMOND SHUTTER
87th RICHMOND SHUTTER
88th RICHMOND SHUTTER
89th RICHMOND SHUTTER
90th RICHMOND SHUTTER
91st RICHMOND SHUTTER
92nd RICHMOND SHUTTER
93rd RICHMOND SHUTTER
94th RICHMOND SHUTTER
95th RICHMOND SHUTTER
96th RICHMOND SHUTTER
97th RICHMOND SHUTTER
98th RICHMOND SHUTTER
99th RICHMOND SHUTTER
100th RICHMOND SHUTTER

POWER STEAM & WATER - FUEL COAL - NO HEAT
F.P. & 50' 1" HOSE IN BLDG FOR
BUCKETS & 250' 1/2" HOSE IN CASH FLOOR.
CAP. 100 BBL'S.

Reg Brandy Distillery No. 168
IN CONNECTION WITH MILL
CAP. 6 BALS PER DAY.

Situate 3 Miles S.W. of Court Ho.



Situate 4 Miles N.E. of Court Ho.

THE DRAISY FLOUR MILL.
PHILLIP HUBER, Prop'r.

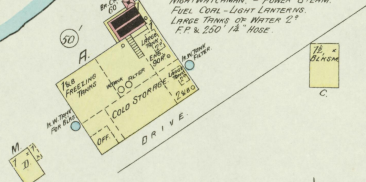
1st 3 SET DRILL - STEVENS - 150' CORN BUYS 150 REVS.
2nd 1 ANIMATING BUYS 250 REVS. - 1 FLOUR PICKER
3rd 1 RICHMOND SHUTTER - 500 REVS. - 1 FUEL BURNING CHEST
4th 1 DRILL - 150 REVS.
5th 1 DRILL - 150 REVS.
6th 1 DRILL - 150 REVS.
7th 1 DRILL - 150 REVS.
8th 1 DRILL - 150 REVS.
9th 1 DRILL - 150 REVS.
10th 1 DRILL - 150 REVS.
11th 1 DRILL - 150 REVS.
12th 1 DRILL - 150 REVS.
13th 1 DRILL - 150 REVS.
14th 1 DRILL - 150 REVS.
15th 1 DRILL - 150 REVS.
16th 1 DRILL - 150 REVS.
17th 1 DRILL - 150 REVS.
18th 1 DRILL - 150 REVS.
19th 1 DRILL - 150 REVS.
20th 1 DRILL - 150 REVS.
21st 1 DRILL - 150 REVS.
22nd 1 DRILL - 150 REVS.
23rd 1 DRILL - 150 REVS.
24th 1 DRILL - 150 REVS.
25th 1 DRILL - 150 REVS.
26th 1 DRILL - 150 REVS.
27th 1 DRILL - 150 REVS.
28th 1 DRILL - 150 REVS.
29th 1 DRILL - 150 REVS.
30th 1 DRILL - 150 REVS.
31st 1 DRILL - 150 REVS.
32nd 1 DRILL - 150 REVS.
33rd 1 DRILL - 150 REVS.
34th 1 DRILL - 150 REVS.
35th 1 DRILL - 150 REVS.
36th 1 DRILL - 150 REVS.
37th 1 DRILL - 150 REVS.
38th 1 DRILL - 150 REVS.
39th 1 DRILL - 150 REVS.
40th 1 DRILL - 150 REVS.
41st 1 DRILL - 150 REVS.
42nd 1 DRILL - 150 REVS.
43rd 1 DRILL - 150 REVS.
44th 1 DRILL - 150 REVS.
45th 1 DRILL - 150 REVS.
46th 1 DRILL - 150 REVS.
47th 1 DRILL - 150 REVS.
48th 1 DRILL - 150 REVS.
49th 1 DRILL - 150 REVS.
50th 1 DRILL - 150 REVS.
51st 1 DRILL - 150 REVS.
52nd 1 DRILL - 150 REVS.
53rd 1 DRILL - 150 REVS.
54th 1 DRILL - 150 REVS.
55th 1 DRILL - 150 REVS.
56th 1 DRILL - 150 REVS.
57th 1 DRILL - 150 REVS.
58th 1 DRILL - 150 REVS.
59th 1 DRILL - 150 REVS.
60th 1 DRILL - 150 REVS.
61st 1 DRILL - 150 REVS.
62nd 1 DRILL - 150 REVS.
63rd 1 DRILL - 150 REVS.
64th 1 DRILL - 150 REVS.
65th 1 DRILL - 150 REVS.
66th 1 DRILL - 150 REVS.
67th 1 DRILL - 150 REVS.
68th 1 DRILL - 150 REVS.
69th 1 DRILL - 150 REVS.
70th 1 DRILL - 150 REVS.
71st 1 DRILL - 150 REVS.
72nd 1 DRILL - 150 REVS.
73rd 1 DRILL - 150 REVS.
74th 1 DRILL - 150 REVS.
75th 1 DRILL - 150 REVS.
76th 1 DRILL - 150 REVS.
77th 1 DRILL - 150 REVS.
78th 1 DRILL - 150 REVS.
79th 1 DRILL - 150 REVS.
80th 1 DRILL - 150 REVS.
81st 1 DRILL - 150 REVS.
82nd 1 DRILL - 150 REVS.
83rd 1 DRILL - 150 REVS.
84th 1 DRILL - 150 REVS.
85th 1 DRILL - 150 REVS.
86th 1 DRILL - 150 REVS.
87th 1 DRILL - 150 REVS.
88th 1 DRILL - 150 REVS.
89th 1 DRILL - 150 REVS.
90th 1 DRILL - 150 REVS.
91st 1 DRILL - 150 REVS.
92nd 1 DRILL - 150 REVS.
93rd 1 DRILL - 150 REVS.
94th 1 DRILL - 150 REVS.
95th 1 DRILL - 150 REVS.
96th 1 DRILL - 150 REVS.
97th 1 DRILL - 150 REVS.
98th 1 DRILL - 150 REVS.
99th 1 DRILL - 150 REVS.
100th 1 DRILL - 150 REVS.

**WILFORD BROS AND CO.
FLOUR MILL.**

1st 3 SET DRILL - 150' CORN BUYS 150 REVS.
2nd 1 ANIMATING BUYS 250 REVS. - 1 FLOUR PICKER
3rd 1 RICHMOND SHUTTER - 500 REVS. - 1 FUEL BURNING CHEST
4th 1 DRILL - 150 REVS.
5th 1 DRILL - 150 REVS.
6th 1 DRILL - 150 REVS.
7th 1 DRILL - 150 REVS.
8th 1 DRILL - 150 REVS.
9th 1 DRILL - 150 REVS.
10th 1 DRILL - 150 REVS.
11th 1 DRILL - 150 REVS.
12th 1 DRILL - 150 REVS.
13th 1 DRILL - 150 REVS.
14th 1 DRILL - 150 REVS.
15th 1 DRILL - 150 REVS.
16th 1 DRILL - 150 REVS.
17th 1 DRILL - 150 REVS.
18th 1 DRILL - 150 REVS.
19th 1 DRILL - 150 REVS.
20th 1 DRILL - 150 REVS.
21st 1 DRILL - 150 REVS.
22nd 1 DRILL - 150 REVS.
23rd 1 DRILL - 150 REVS.
24th 1 DRILL - 150 REVS.
25th 1 DRILL - 150 REVS.
26th 1 DRILL - 150 REVS.
27th 1 DRILL - 150 REVS.
28th 1 DRILL - 150 REVS.
29th 1 DRILL - 150 REVS.
30th 1 DRILL - 150 REVS.
31st 1 DRILL - 150 REVS.
32nd 1 DRILL - 150 REVS.
33rd 1 DRILL - 150 REVS.
34th 1 DRILL - 150 REVS.
35th 1 DRILL - 150 REVS.
36th 1 DRILL - 150 REVS.
37th 1 DRILL - 150 REVS.
38th 1 DRILL - 150 REVS.
39th 1 DRILL - 150 REVS.
40th 1 DRILL - 150 REVS.
41st 1 DRILL - 150 REVS.
42nd 1 DRILL - 150 REVS.
43rd 1 DRILL - 150 REVS.
44th 1 DRILL - 150 REVS.
45th 1 DRILL - 150 REVS.
46th 1 DRILL - 150 REVS.
47th 1 DRILL - 150 REVS.
48th 1 DRILL - 150 REVS.
49th 1 DRILL - 150 REVS.
50th 1 DRILL - 150 REVS.
51st 1 DRILL - 150 REVS.
52nd 1 DRILL - 150 REVS.
53rd 1 DRILL - 150 REVS.
54th 1 DRILL - 150 REVS.
55th 1 DRILL - 150 REVS.
56th 1 DRILL - 150 REVS.
57th 1 DRILL - 150 REVS.
58th 1 DRILL - 150 REVS.
59th 1 DRILL - 150 REVS.
60th 1 DRILL - 150 REVS.
61st 1 DRILL - 150 REVS.
62nd 1 DRILL - 150 REVS.
63rd 1 DRILL - 150 REVS.
64th 1 DRILL - 150 REVS.
65th 1 DRILL - 150 REVS.
66th 1 DRILL - 150 REVS.
67th 1 DRILL - 150 REVS.
68th 1 DRILL - 150 REVS.
69th 1 DRILL - 150 REVS.
70th 1 DRILL - 150 REVS.
71st 1 DRILL - 150 REVS.
72nd 1 DRILL - 150 REVS.
73rd 1 DRILL - 150 REVS.
74th 1 DRILL - 150 REVS.
75th 1 DRILL - 150 REVS.
76th 1 DRILL - 150 REVS.
77th 1 DRILL - 150 REVS.
78th 1 DRILL - 150 REVS.
79th 1 DRILL - 150 REVS.
80th 1 DRILL - 150 REVS.
81st 1 DRILL - 150 REVS.
82nd 1 DRILL - 150 REVS.
83rd 1 DRILL - 150 REVS.
84th 1 DRILL - 150 REVS.
85th 1 DRILL - 150 REVS.
86th 1 DRILL - 150 REVS.
87th 1 DRILL - 150 REVS.
88th 1 DRILL - 150 REVS.
89th 1 DRILL - 150 REVS.
90th 1 DRILL - 150 REVS.
91st 1 DRILL - 150 REVS.
92nd 1 DRILL - 150 REVS.
93rd 1 DRILL - 150 REVS.
94th 1 DRILL - 150 REVS.
95th 1 DRILL - 150 REVS.
96th 1 DRILL - 150 REVS.
97th 1 DRILL - 150 REVS.
98th 1 DRILL - 150 REVS.
99th 1 DRILL - 150 REVS.
100th 1 DRILL - 150 REVS.

BOWLING GREEN ICE FACTORY.
SEELEY AND ROBINSON, Prop'r's.

NO WATCHMAN - POWER STEAM - FUEL COAL - LIGHT LANTERNS
LARGE FRAMES OF WATER 2"
F.P. & 250' 1/2" HOSE.

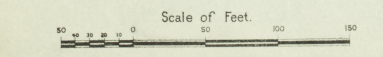
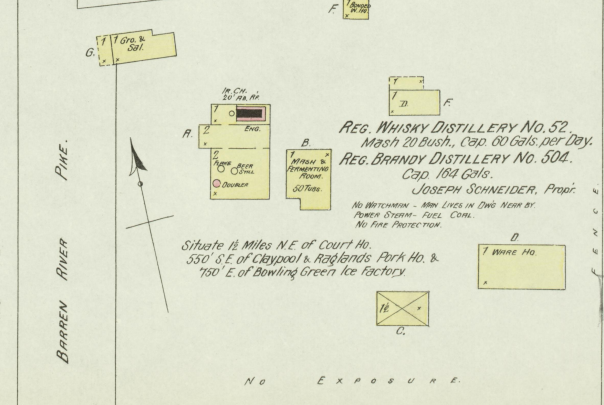


Situate 1 1/2 Mile N.E. of Court Ho.

REG. WHISKY DISTILLERY No. 52
Mash 20 Bush. Cap. 60 Gals. per Day.
REG. BRANDY DISTILLERY No. 50A.
Cap. 184 Gals.
JOSEPH SCHNEIDER, Prop'r.

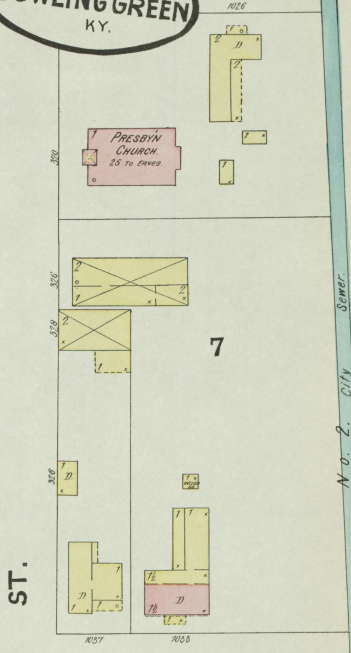
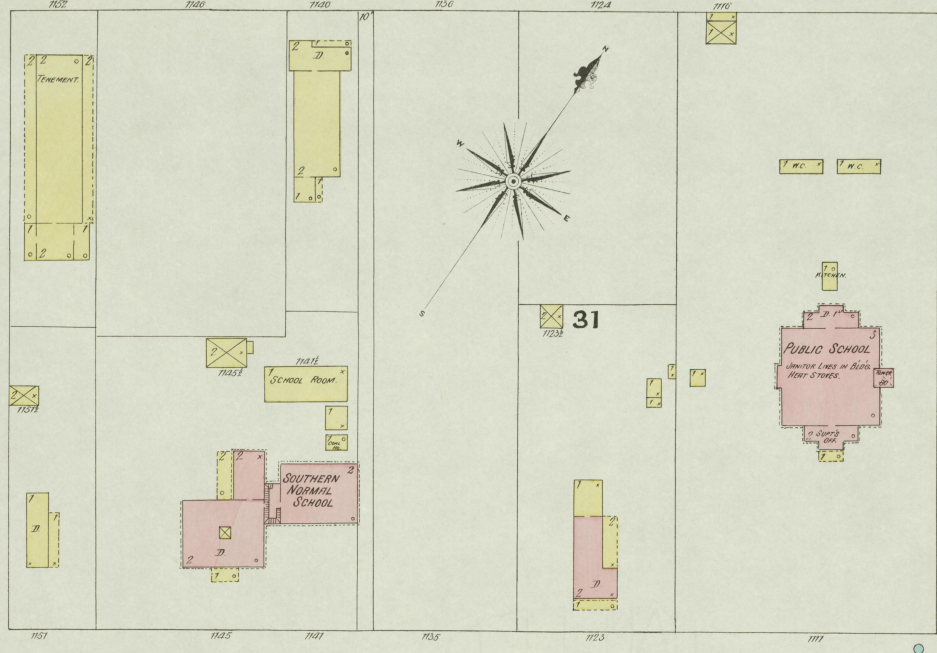
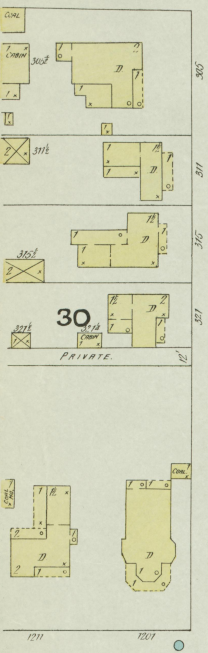
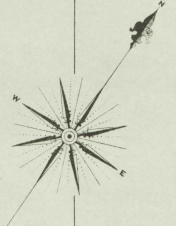
NO WATCHMAN - 100 LIVES IN DWG NEAR BY
POWER STEAM - FUEL COAL.
NO FIRE PROTECTION.

Situate 1 1/2 Miles N.E. of Court Ho.
350' S.E. of Claypool & Ragland's Pork Ho. &
150' E. of Bowling Green Ice Factory

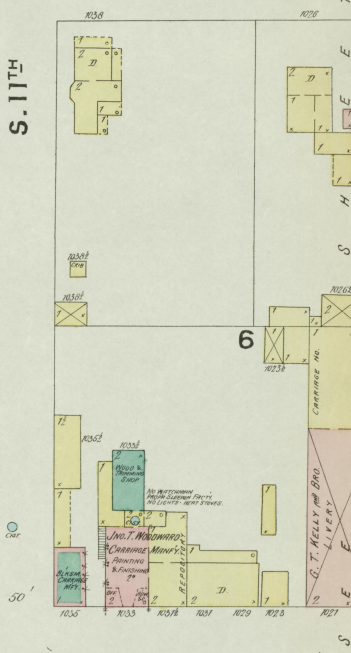
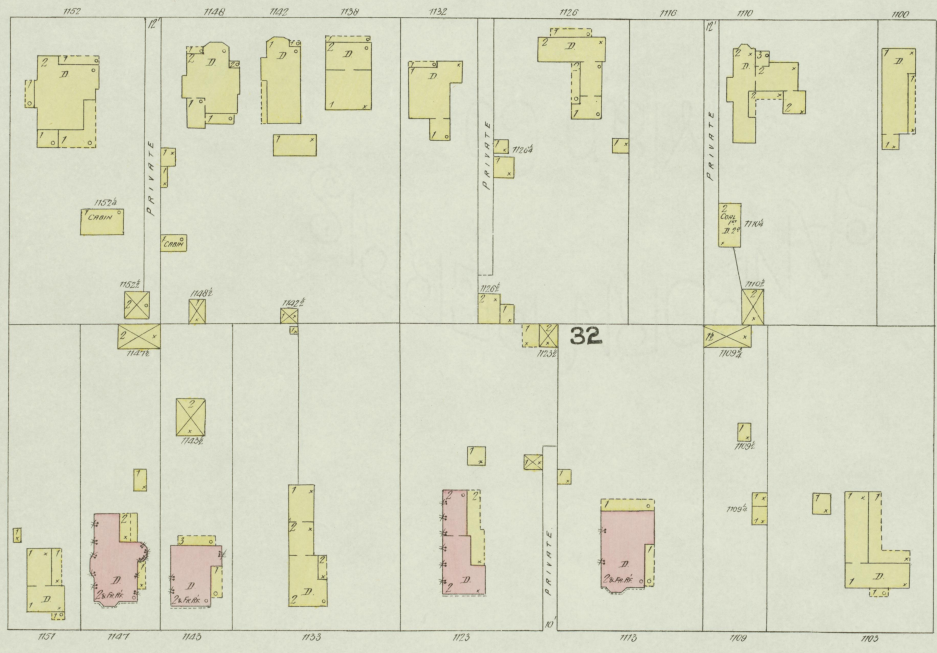
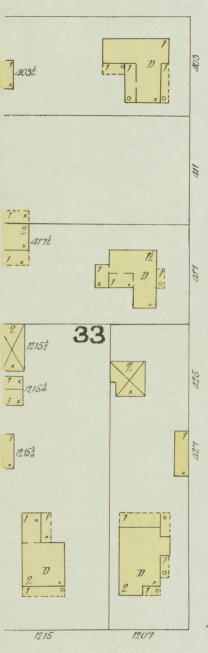


Oct. 1891
BOWLING GREEN
KY.

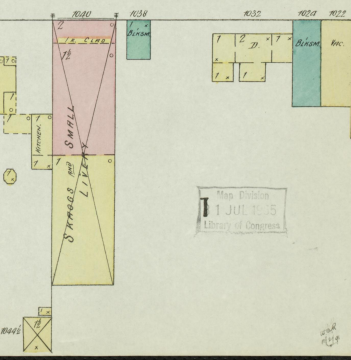
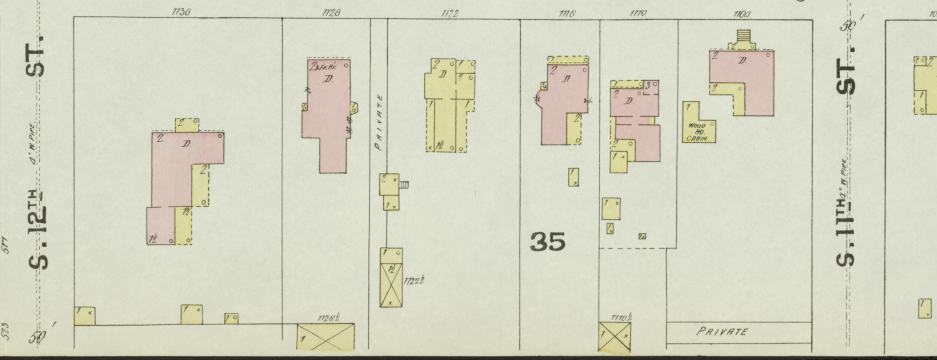
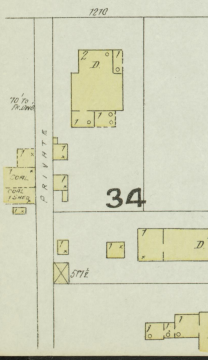
CENTER



COLLEGE



STATE



Scale of Feet. 0 50 100 150

Map Edition
1 JUL 1915
Library of Congress

6
N. O. 2. CITY STREET