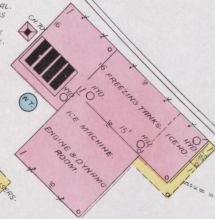


WINCHESTER RAILWAY LIGHT AND ICE CO.
POWER HOUSE AND ICE PLANT.

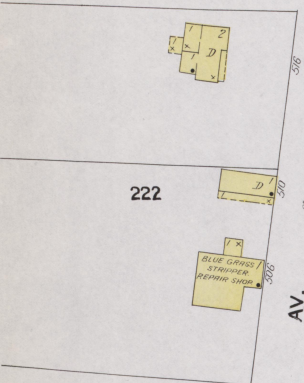
RUNS NIGHT AND DAY. MEN ALWAYS
ON DUTY. POWER-STEAM, FUEL, COAL,
LIGHTS, ELECTRIC, IMPROVEMENTS AS
SHOWN. NOT BY ROSE. 4 BRIDGES
CHEMICAL, EXTENSIVE STEAM ENGINE
IN ATTIC. FOR USE IN CASE OF FIRE.

228

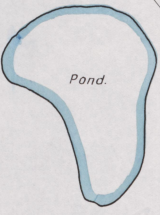


WALNUT

227



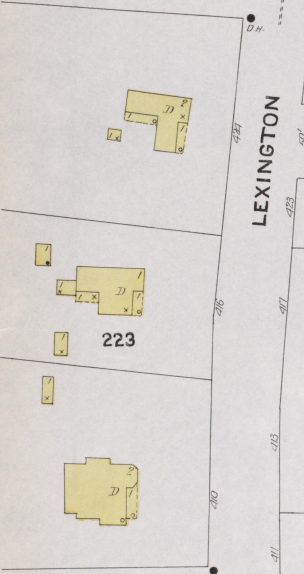
222



226

A

ST.



223

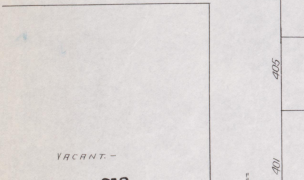
GARNER

BURLEY TOBACCO SOCIETY.

WINDMILL SHED
WINDMILL HOUSE
(T.R. O.)

WINDMILL
WINDMILL
WINDMILL

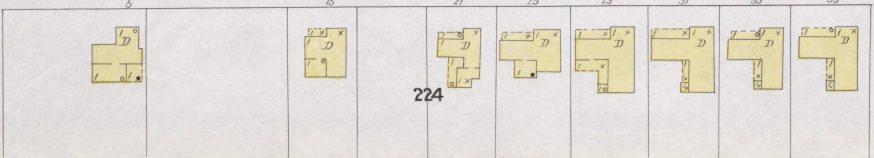
225



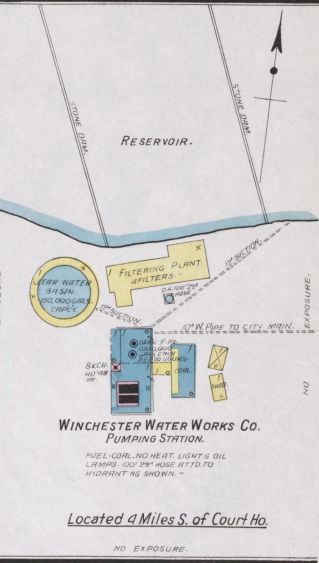
213

B

ST.



224

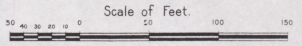


WINCHESTER WATER WORKS CO.
PUMPING STATION.

FUEL, COAL, NO HEAT, LIGHTS, OIL,
LAMP, 100' BY ROSE ATT'D TO
FURNACE NO. 5000.

Located 4 Miles S. of Court Ho.

NO EXPOSURE.



S.W. BROADWAY

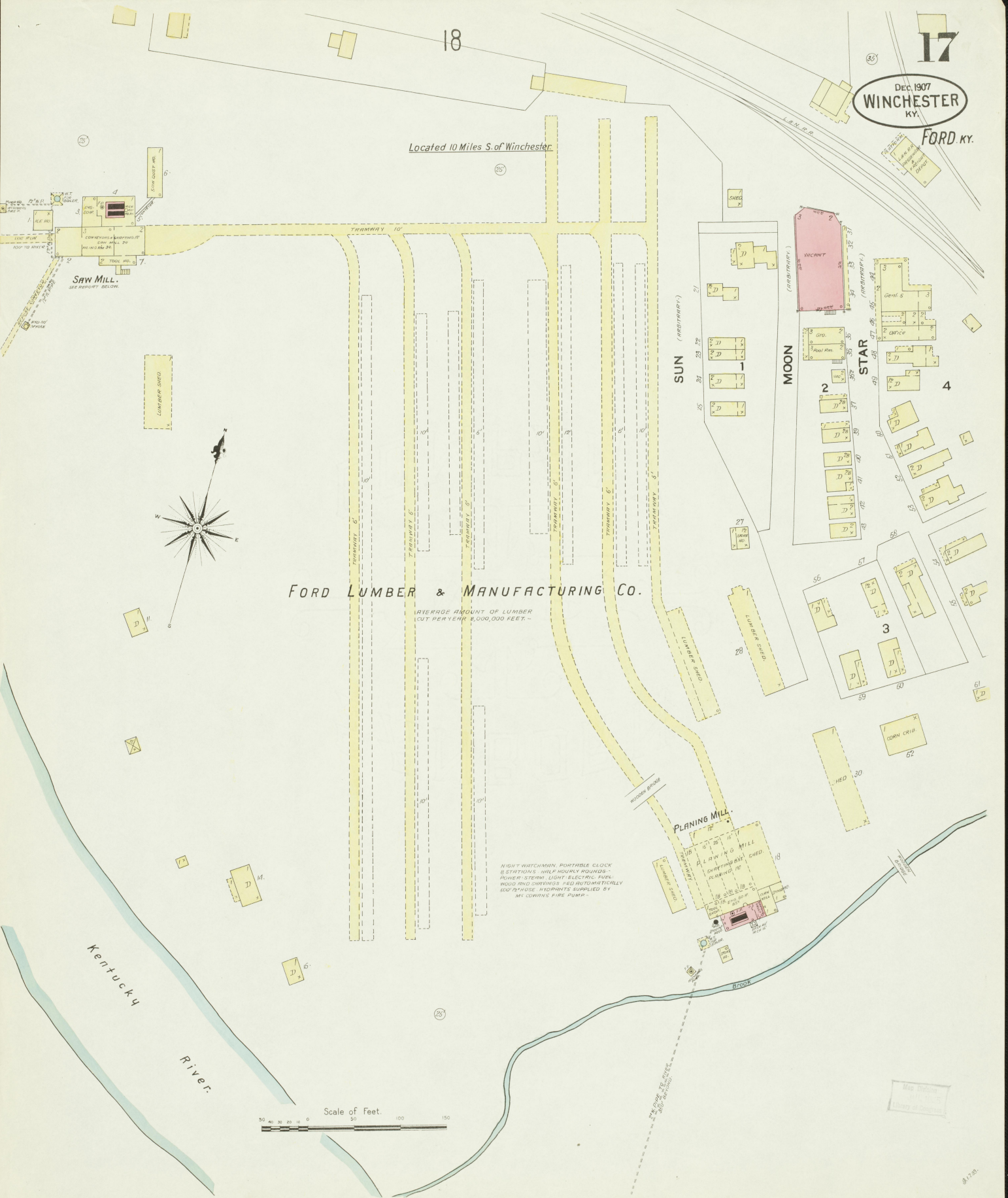
Dec. 1907
WINCHESTER
KY.
FORD KY.

Located 10 Miles S. of Winchester

FORD LUMBER & MANUFACTURING CO.

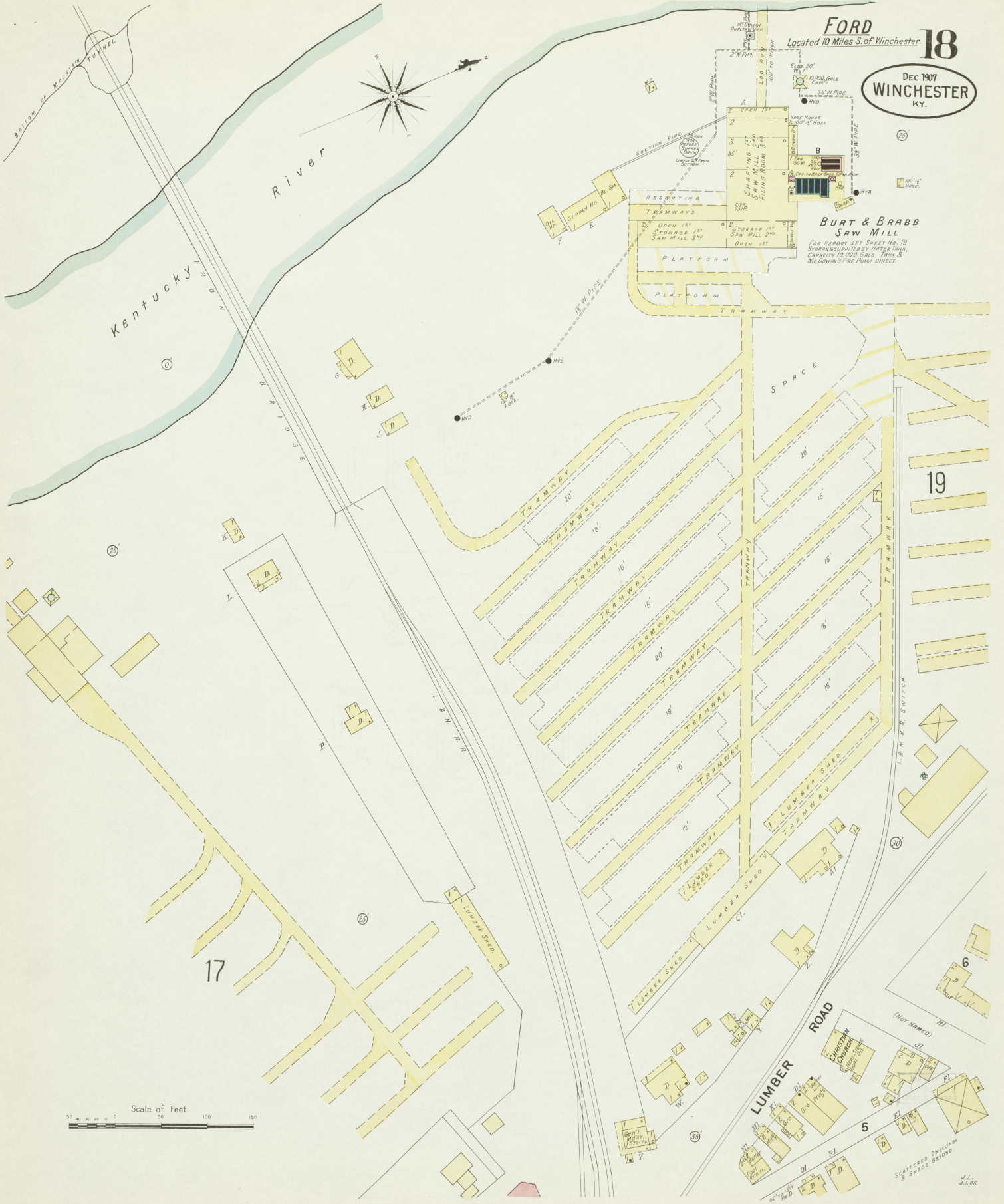
AVERAGE AMOUNT OF LUMBER CUT PER YEAR 1,000,000 FEET.

NIGHT WATCHMAN PORTABLE CLOCK STATIONS - HALF HOURLY ROUNDS - POWER STEAM LIGHT ELECTRIC FUEL WOOD AND SHAPINGS FEED AUTOMATICALLY 500 P.H.O.SE HYDRANTS SUPPLIED BY M.C. LEWIS'S FIRE PUMP.



FORD
Located 10 Miles S. of Winchester

18
Dec 1907
WINCHESTER
KY.



BURT & BRABB
SAW MILL

FOR REPORT SEE SHEET NO. 18
HYDRAULICALLY SUPPLIED BY WATER TANK,
CAPACITY 10,000 GALS. TANK &
McGOWAN'S PUMP DIRECT.

Scale of Feet.
0 50 100 150

J.L.
3.1.08

