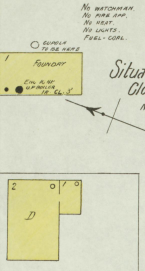
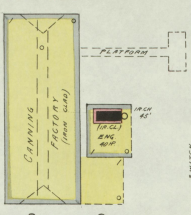


THE CLOVERPORT FOUNDRY & MACHINE CO.



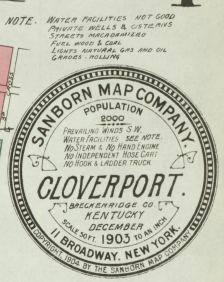
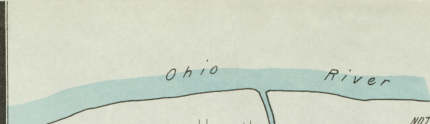
Situate 3/4 Mile SW of Clover Creek
No Exposures

Situate 3/4 Mile SW of Clover Creek.



POLK PACKING CO.

NOTE: WATER FACILITIES NOT GOOD
PRIVATE WELLS & CISTERNS
STREETS INCORPORATED
FUEL COAL & OIL
LIGHTS, AUTOMOB. GAS AND OIL
GRADERS, COLLARS



Map Division
FEB 17 1904
Library of Congress

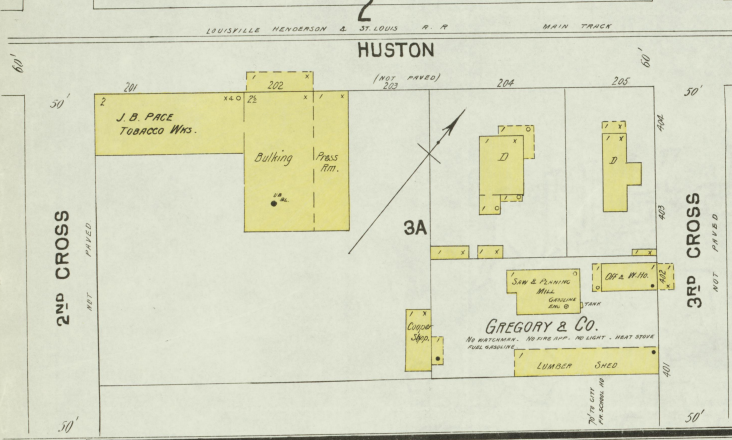
LIBRARY OF CONGRESS
First Copy Received
FEB 22 1904
SEC. OF STATE

INDEX.

STREETS.	WEST	EAST	WEST	EAST
Centre, C	107-115	301-305	Wall, W	101-111
Chestnut, C	107-115	301-305	"	101-111
Cross, C	101-183	301-305	Gross & Miller, Tobacco Warehouse, L	3
Elm, E	101-183	301-305	Lewis, S. L., Planing Mill, L	4
Front, F	101-183	301-305	Lillard, S., Tobacco Warehouse, L	4
High, H	101-183	301-305	L. H. & St. L. R. R. Shops, L	1
Huston, H	101-183	301-305	M	
Locust, L	101-183	301-305	Methodist Episcopal Church, M	3
Oak, O	101-183	301-305	" " Colored, M	2
Railroad, R	101-183	301-305	Mitchell Home, M	2
Second, S	101-183	301-305	Morman-Skillman & Co., Tobacco W. H., M	3
Third, T	101-183	301-305	Morton, H. L., & Son, Saw Mill, M	2
" Cross, C	101-183	301-305	Murray Roofing Tile Co., M	4
" " " " " "	101-183	301-305	O	
			Orte & Pate, Roller Mills, O	3
			P	
			Pace, J. B., Tobacco Works, P	1
			Patton Vitrified Brick Co., P	1
			Phelps Saw and Planing Mill, P	2
			Polk Packing Co., P	1
			Presbyterian Church, P	2
			S	
			St. George Hotel, S	2
			Star Roller Mills, S	3
			W	
			Warfield Heirs, Tobacco Warehouse, W	2
			Whit, Conrad & Dyer, Wagon Works, W	3

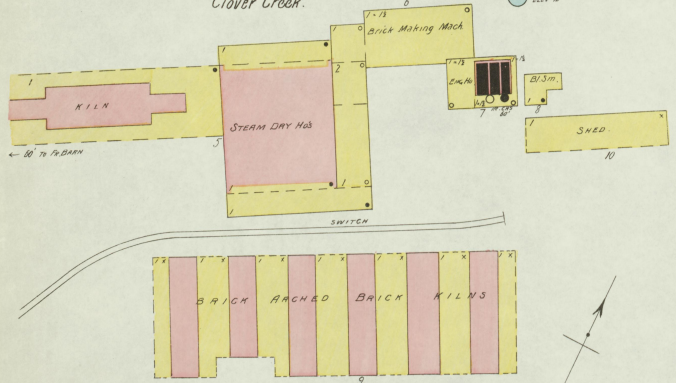
NOTE.—HOUSE NUMBERS given are arbitrary.

2 HUSTON



CENTRAL CLAY & PRODUCT CO.

Situate 1/2 Mile S.E. of Clover Creek.

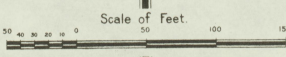
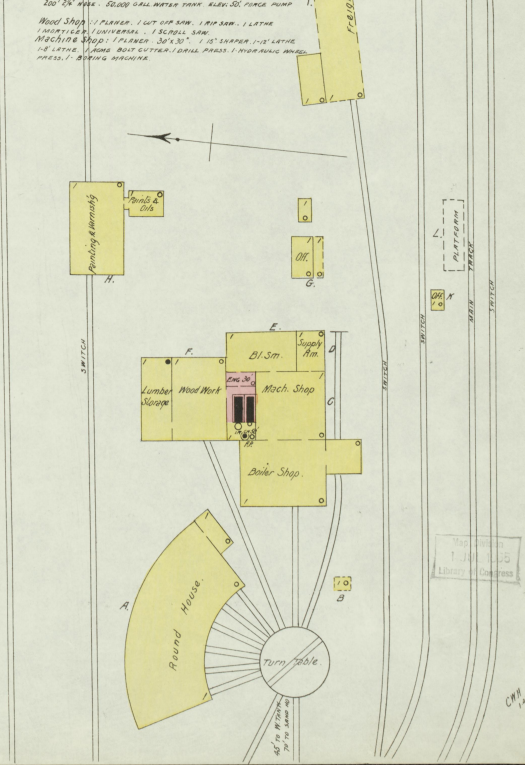


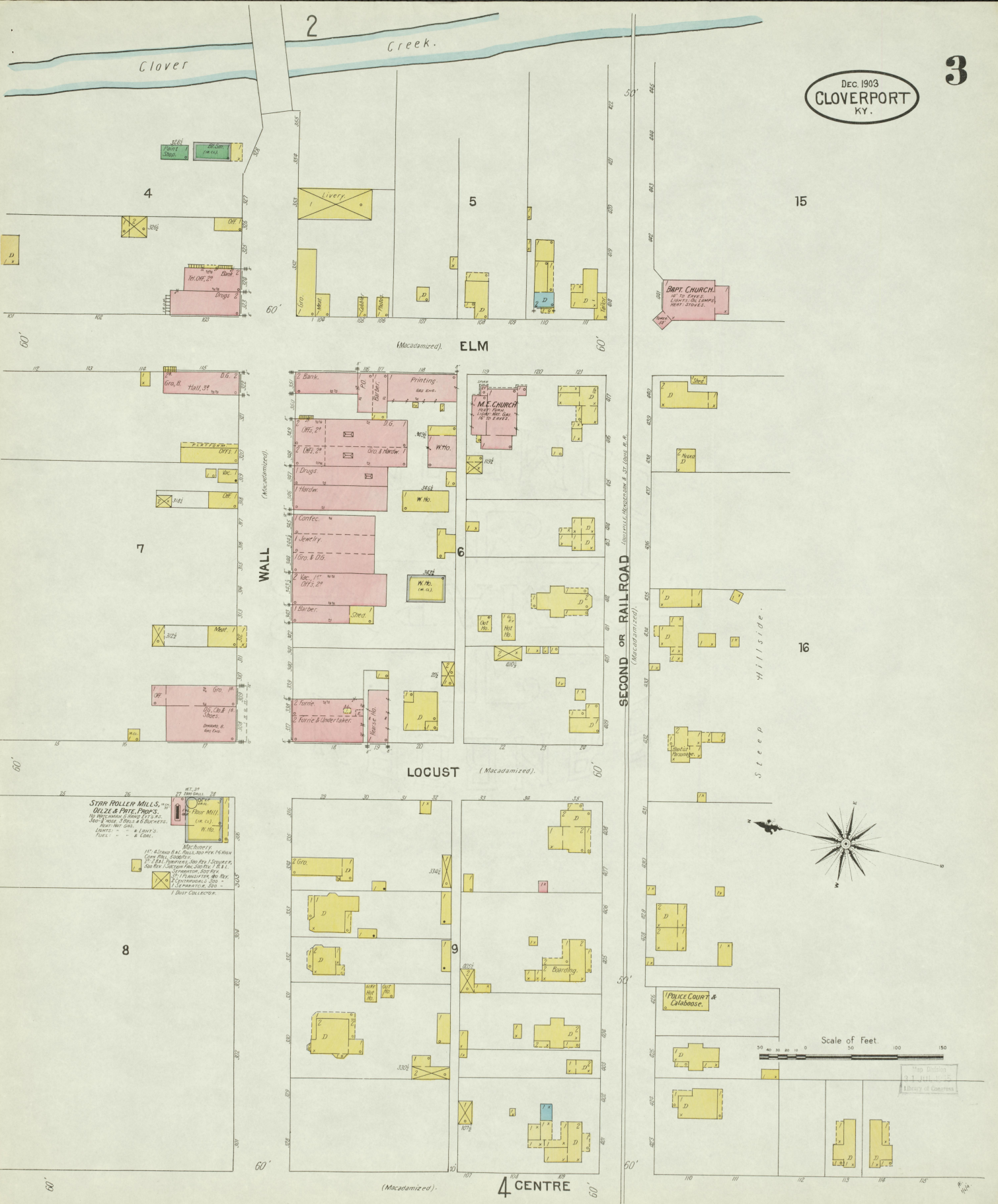
KEY

- FIRE WALL 1/2 IN. REV. ROOF
- METAL CORNER
- FIRE WALL IN ANY ROOF
- FRAME PARTITION
- OPENING WITH HIGH DOOR
- WINDOW WITH SHUTTERS
- WINDOW WITH GLASS
- WINDOW WITH SHUTTERS
- CHIMNEY
- STABLE
- BUILDINGS COLORED YELLOW ARE FRAME
- RED BRICK
- BLUE WOOD
- BROWN PLASTER
- GREEN SPECIES
- (S) INDICATE RELATIVE HEIGHTS
- THE CIRCLES AS SHOWN ON KEY MAP
- ALTERNATE STREET NUMBERS ARE ACTUAL
- CONSECUTIVE STREET NUMBERS ARBITRARY

Situate 3/4 Mile S.W. of Clover Creek.

LOUISVILLE, HENDERSON & ST. LOUIS R.R. REPAIR SHOPS.





Clover

2
Creek.

4

5

15

BAPT. CHURCH.
W. 10 SEARS.
LIGHTS - 20 LUMBER.
HEAT - STOVES.

(Macadamized). ELM

7

WALL

6

SECOND OR RAILROAD
(Macadamized)

16

STEEP HILLSIDE.

LOCUST (Macadamized)

STAR ROLLER MILLS -
OLZE & PRITE, PROPS.
1000 lbs. capacity & HAND SET.
1000 lbs. capacity & HAND SET.
1000 lbs. capacity & HAND SET.
1000 lbs. capacity & HAND SET.
1000 lbs. capacity & HAND SET.
1000 lbs. capacity & HAND SET.

8

9

POLICE COURT & COURTHOUSE

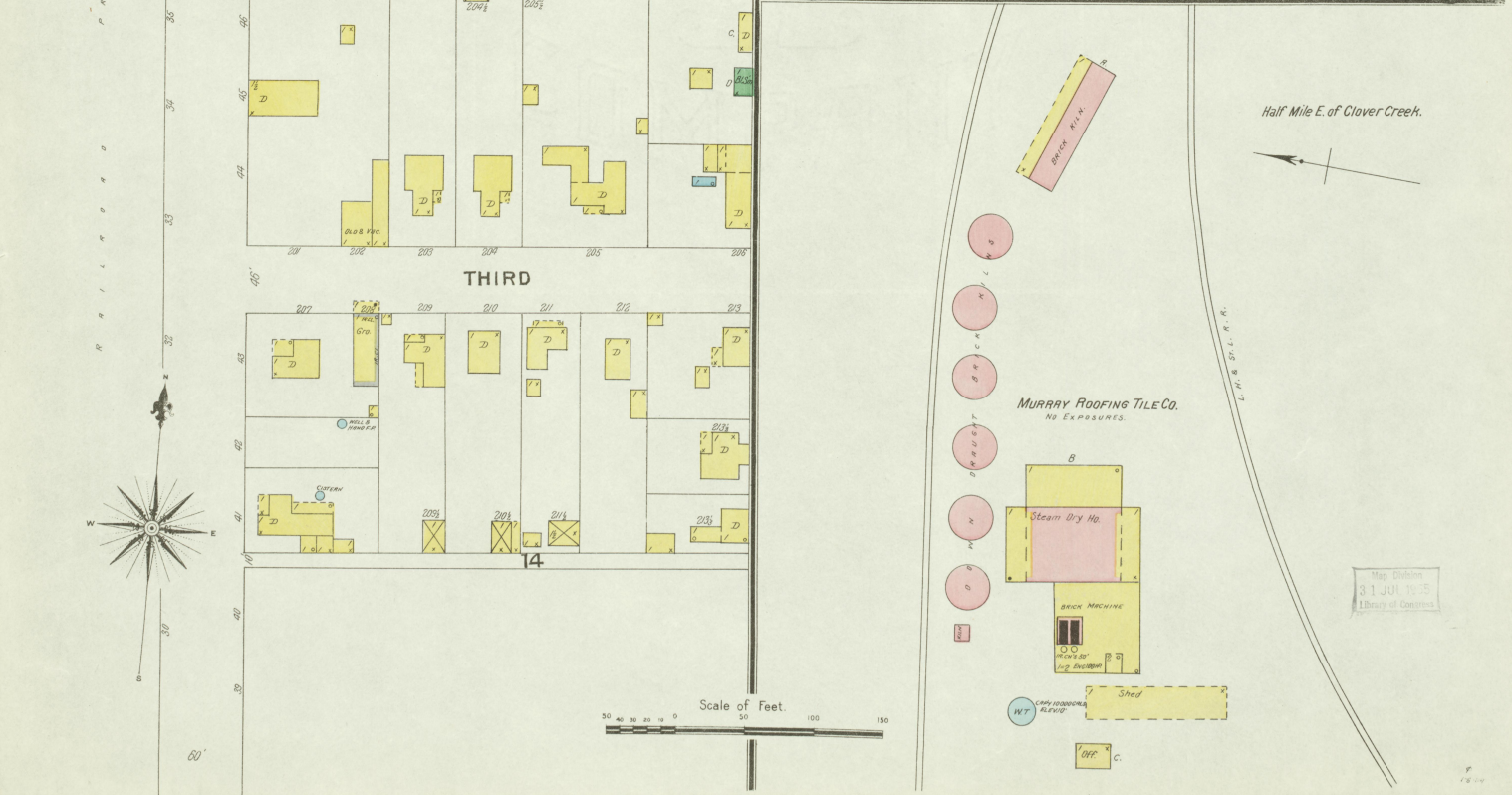
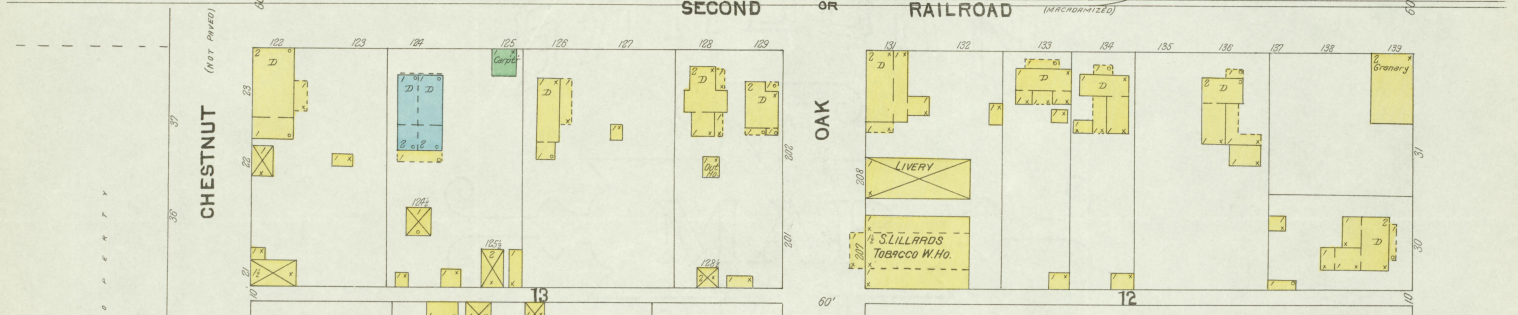
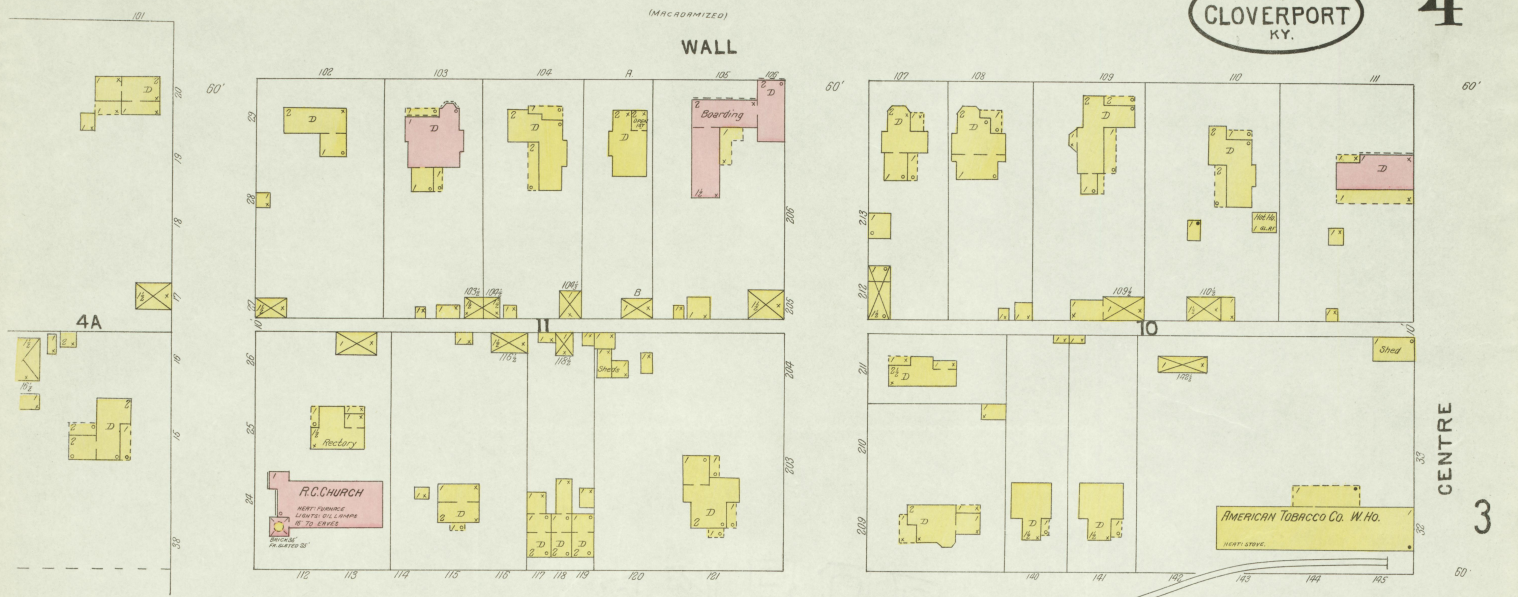
Scale of Feet.
0 50 100 150

4 CENTRE

Map drawn
31 JUL 1904
Library of Congress

DEC. 1903
CLOVERPORT
KY.

4



Map Drawn
31 JUL 1915
Library of Congress