

# UNIVERSITY OF KENTUCKY

## COLLEGE OF AGRICULTURE

### Extension Division

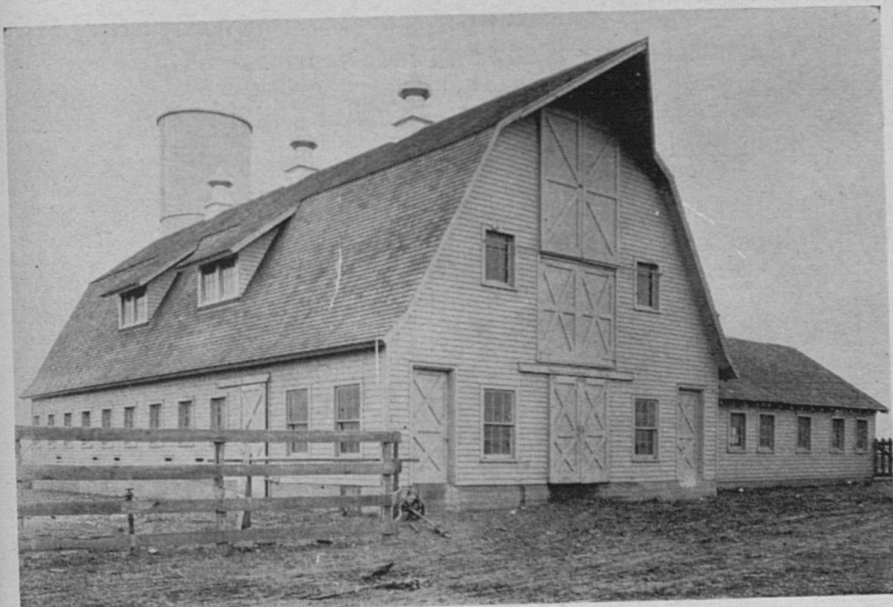
THOMAS P. COOPER, Dean and Director

---

## CIRCULAR NO. 111

(3rd Revision)

## LIST OF FARM BUILDING PLANS



Lexington, Ky.

January, 1935

---

Published in connection with the agricultural extension work carried on by co-operation of the College of Agriculture, University of Kentucky, with the U. S. Department of Agriculture, and distributed in furtherance of the work provided for in the Act of Congress of May 8, 1914.

## AVOID MISTAKES BY BUILDING FROM CAREFULLY PREPARED PLANS.

1. Select the building site carefully.
2. Decide on the number of persons, or animals, and the amounts of feed and equipment to be housed.
3. Consider the future requirements of the structure.
4. Consult your county agent or home demonstration agent, local lumber dealers and builders regarding plans and materials.
5. Write the Agricultural Extension Division of the University of Kentucky for plans and information.
6. Consult farmers who have similar buildings and examine them for ideas.
7. Decide upon the interior equipment to be used and obtain plans and instructions from the manufacturers for its installation.
8. Obtain or prepare the plans to be used.
9. Obtain the services of a competent builder.
10. Remember that good plans aid in determining the exact size and arrangement of the buildings and equipment, prevent expensive mistakes, and save labor and building costs.

This circular is a catalog of plans for farm buildings and equipment suitable for use in Kentucky. For each building or piece of equipment, a set of detailed drawings has been prepared. Blueprints of the plans may be obtained from the Agricultural Engineering Department, College of Agriculture, University of Kentucky, Lexington, Ky., for a nominal charge of 10 cents a sheet which covers the cost of the labor in making them. Order from the list by name and number and send remittance with the order.

**CIRCULAR NO. 111**  
(3rd Revision)

**LIST OF FARM BUILDING PLANS**

By J. B. KELLEY and EARL G. WELCH

In this circular, the plans marked "Kentucky" were prepared by the members of the Agricultural Engineering Department of the University of Kentucky and embody suggestions of Kentucky farmers and the advice of specialists in every line concerned. The plans marked "M. W." and "U. S." were selected especially for use in Kentucky from designs prepared cooperatively by a number of agricultural colleges and the United States Department of Agriculture. In this cooperation, the experience of many individuals has been used in making available to the states these excellent plans, at a much lower cost than if prepared by one state.

The Extension Division of the College of Agriculture has published a number of circulars containing additional information on various types of buildings and equipment, a list of which will be found on page 27 of this circular.

If a plan is needed for a type of building not found in this catalog, write for information. All correspondence pertaining to this service should be addressed to the Agricultural Engineering Department, College of Agriculture, University of Kentucky, Lexington, Ky.

**FARM HOUSES.**

Plan No.	
Ky. 11.71-1	Two sheets. One story frame, 26'x26'. Combined kitchen and dining room, living room, 2 bedrooms, bath, 2 closets, 2 small porches. Price 20c.
Ky. 11.71-2	Five sheets. One story brick veneer, 28'x30'. Living room, combination kitchen and dining room, 2 bedrooms, bath, 2 closets, screened-in back porch, stairway to cellar, and front porch. Price 50c.
Ky. 11.71-3	Four sheets. Two story frame, 28'x28'. Basement: coal bin, laundry, place for warm air furnace. First floor: living room, dining room, kitchen, wash room, office, pantry, rear and front porches. Second floor: 3 bedrooms, bath and 3 closets. Price 40c.

- U. S. 11.71-4. Three sheets. Two story, frame, 23'x25'. Combined living and dining room, kitchen, wash room and laundry on first floor. Three bedrooms, bath and sleeping porch on second floor. Cellar with furnace flue. Large front porch. Price 30c.
- U. S. 11.71-5. Three sheets. One story frame, 28'x36'. Living room, dining room, kitchen, bath, 2 bedrooms, sleeping porch, small cellar for furnace, storage cellar, front porch, rear screened porch, all 20'x16'. Price 30c.
- U. S. 11.71-6. Five sheets. Two story, frame, 33'x43'. Living room, dining room, 1 bedroom, bath, kitchen, laundry, and wash room on first floor. Ice house and dairy room in 26'x30' wing. Three bedrooms on second floor. Cellar, furnace, front, side and rear porches. Price 50c.
- U. S. 11.71-7. Two sheets. One story frame, 18'x30'. Combined living room and kitchen, 1 bedroom, bath, front and rear porches, no cellar, concrete foundation. Price 20c.
- U. S. 11.71-8. Three sheets. One story frame, 25'x25'. Living room, combined kitchen and dining room, 1 bedroom, front porch, bath, and rear porch designed to be built with the house or as an addition. No cellar, concrete foundation. Price 30c.
- U. S. 11.71-9. Three sheets. One story frame, 25'x30'. Combined living room and kitchen, 2 bedrooms, bath, inclosed rear porch, front porch, cellar with furnace flue. (Alternate plan, living room, combined kitchen and dining room, 1 bedroom, bath, inclosed rear porch, front porch, cellar under part of house, no furnace flue.) Price 30c.
- U. S. 11.71-10. Two sheets. One story frame, 20'x32'. Combined living room and dining room, kitchen, 2 bedrooms, no cellar. Pier and girder foundation, fireplace. Price 20c.
- U. S. 11.71-11. One sheet. One story frame, 23'-8"x36'. Kitchen, living room, 2 bedrooms, bath, front and back porches. Price 10c.
- U. S. 11.71-12. One sheet. One story frame, 24'x28'. Living room, kitchen and 2 bedrooms, front porch and side porch. Price 10c.
- U. S. 11.71-13. One sheet. One story frame, 14'x36'-4". Two rooms and front porch. Price 10c.
- U. S. 11.71-15. Three sheets. One story, frame, 35' 8"x44' 1". Basement, living room, dining room, kitchen, 2 bedrooms, sleeping porch, screened-in back porch and a front porch. Price 30c.
- U. S. 11.71-16. Two sheets. One story frame, 20'x32'. Living room, 2 bedrooms, kitchen and closed-in porch. Price 20c.

M. W.

M. W.

M. W.

M. W.

M. W.

U. S.

U. S.

U. S.

U. S.

U. S.

U. S.

- M. W. 71131. Three sheets. One story frame, 24'x34'. Living room, 2 bedrooms, kitchen, bath, 2 closets, large attic. Basement: Laundry, fruit storage, coal room, furnace room. Price 30c.
- M. W. 71132. Three sheets. One story frame, 26'x32'. Living room, 2 bedrooms, kitchen, bath, pantry, dining nook, on first floor. Basement: Furnace room, coal room, fruit room, laundry, Front and rear porches. Price 30c.
- M. W. 71133. Four sheets. One and one-half story frame, 28'x30'. Basement: Fruit storage, coal, laundry, furnace room. First floor: Combined living and dining room, 2 bedrooms, kitchen, pantry, bath, closet, front and rear porches. Second floor: One large room. Price 40c.
- M. W. 71141. Three sheets. One story frame, 26'x48'. Ground floor: Living room, 2 bedrooms, bath, kitchen, office, wash room, front and rear porches. Basement: Furnace room, laundry, coal room, fruit storage room. Price 30c.
- M. W. 71171. Four sheets. Two story frame, 28'x30'. First floor: Living room, dining room, kitchen, pantry, wash room, clothes closet, front porch. Second floor: 4 bedrooms (each with clothes closet) and bath. Basement: Furnace room, coal room, laundry, 2 storage rooms. Price 40c.
- U. S. 6501.\* One sheet. One story frame, 14'x23' 2". Combined living room, dining room and curtained-off space for bedroom, kitchen and 2 closets. Price 10c.
- U. S. 6502.\* One sheet. One story frame, 16'x31'. Combination living room and bedroom, combination kitchen and dining room, screened-in back porch, shower bath, 2 closets and small front porch. Price 10c.
- U. S. 6508.\* One sheet. One story frame, 24'x26'. Living room, combination kitchen and dining room, 2 bedrooms and 3 closets, back porch. Plans show how to build this house on the installment plan starting with a kitchen, living room, 1 bedroom. Price 10c.
- U. S. 6509.\* Two sheets. One story frame, 24'x26'. Living room, bedroom, combination kitchen and dining room, front porch. Price 20c.
- U. S. 6510.\* Three sheets. One story frame, 29' 6"x30' 6". Combination kitchen and dining room, combination living and bedroom, 1 bedroom, storage work space, 2 clothes closets, 1 small front porch, 1 small back porch. Price 30c.

\*Farm house plans U. S. 6501 to 6539, inclusive, are presented in U. S. D. A. Farmers Bulletin No. 1738.

- U. S. 6511.\* Six sheets. One story frame and stucco, 21' 9"x30' 9". Living room, combination kitchen and dining room, wash room, shower bath, closed back porch, and laundry; ample closet space. Price 60c.
- U. S. 6511-A.\* Eight sheets. One story frame or stucco, 30' 9"x30' 3". Living room, combination dining room and kitchen, 1 bedroom, bath, combination built-in back porch and laundry; ample closet space. Price 80c.
- U. S. 6511-B.\* Nine sheets. One story frame or stone construction, 30' 9"x32' 3". Living room, 2 bedrooms, bath, kitchen, combination back porch and laundry. Price 90c.
- U. S. 6513.\* One sheet. One story frame, 23' 8"x24' 10". Combination kitchen and dining room, work room, 1 bedroom. Plans so drawn that 4 additional rooms may be added later, namely; living room, 2 bedrooms, bath. Price 10c.
- U. S. 6514.\* Two sheets. One story frame, 24'x28'. Living room, 2 bedrooms, bath, combination kitchen and dining room, and storage cellar. Price 20c.
- U. S. 6515.\* Two sheets. One story frame, 19' 4"x29' 4". Combination living and dining room, kitchen, bath, front and back porches. Price 20c.
- U. S. 6519.\* Three sheets. One story frame, 25' 6"x31' 6". Combination living room and dining room, kitchen, work room, bedroom, bath, closet, back porch. Price 30c.
- U. S. 6520.\* One sheet. One story frame, 24' 8"x25' 2". Dining room, kitchen, 2 bedrooms, pantry, space for refrigerator, 2 closets, screened-in back porch, front porch; also plans for addition of the following rooms later: 3 bedrooms, bath, work room. Price 10c.
- U. S. 6521.\* Two sheets. One story frame, 31' 8"x35' 8". Dining room, kitchen, 2 bedrooms, 3 closets, pantry, screened-in back porch, front porch, and suggestions for adding 4 more rooms later. The 2 original bedrooms would then become a living room. Price 20c.
- U. S. 6525.\* Two sheets. One story frame, 26' 3"x32' 6". Basement: Furnace room, coal room, 2 vegetables and fruit storage rooms and laundry. Main floor: Combination living and dining room, bath, bedroom and kitchen. Price 20c.
- U. S. 6526.\* One sheet. One story log house; 24' 8"x34' 4". Living room, combination kitchen and dining room, 2 bedrooms, bath, 2 closets, back porch and front porch. Price 10c.

\*Farm house plans U. S. 6501 to 6539, inclusive, are presented in U. S. D. A. Farmers Bulletin No. 1738.

- U. S. 6528.\* Two sheets. One story frame, 21' 6"x37' 3". Living room, combination kitchen and dining room, 2 bedrooms, bath, 4 closets, built-in Murphy bed in living room, basement. Basement has space for warm air furnace, cistern, root cellar, laundry, coal bin, and extra storage. Price 20c.
- U. S. 6529.\* Two sheets. One story frame, 22' 6"x42' 4". Combination living and dining room, kitchen, work room, 2 bedrooms, large porch at one end. Price 20c.
- U. S. 6530.\* Three sheets. One story frame, 30' 9"x37' 6". Living room, 2 bedrooms, bath, kitchen, front porch, screened-in back porch. Price 30c.
- U. S. 6531.\* Two sheets. One story frame, 35'x38' 6". Living room, dining room, 3 bedrooms, bath, kitchen, wash room, front and back porches. Price 20c.
- U. S. 6533.\* Three sheets. One story frame, 33' 10"x39' 6". Living room, kitchen, dining alcove, 2 bedrooms, laundry, bath, 8 closets, 2 small porches. Basement: Space for fuel bin and warm air furnace. Price 30c.
- U. S. 6534.\* Two sheets. Two story frame, 31' 6"x33'. Basement: Space for laundry, vegetable storage, fruit storage, coal storage, and furnace room. First floor: Combination living and dining room, kitchen, bedroom, bath, linen closet, large front porch, closed-in back porch. Second floor: 2 bedrooms, bath, 3 closets. Price 20c.
- U. S. 6536.\* Three sheets. 1½ story frame, 27' 8"x37'. Basement floor: Coal room, space for warm air furnace. First floor: Living room, combination dining room and kitchen, 1 bedroom, bath, laundry and wash room, closet space. Second floor: 2 bedrooms and storage room. Price 30c.
- U. S. 6537.\* Two sheets. Two story frame, 30'x32' 6". Basement: Furnace room, laundry and storage room. First floor: Living room, bedroom, bath, wash room, combination dining room and kitchen, inclosed back porch. Second floor: 2 bedrooms, and closet space. Price 20c.
- U. S. 6539.\* Three sheets. Two story frame, 35' 10"x49' 2". Basement: Coal room, store room and furnace room. First floor: Living room, dining room, work room, bath, bedroom, 4 closets, kitchen, 3 porches. Second floor: 2 bedrooms, 4 closets. Price 30c.

---

\*Farm house plans U. S. 6501 to 6539, inclusive, are presented in U. S. D. A. Farmers Bulletin No. 1738.

## HOUSEHOLD EQUIPMENT.

Ky. 11.712-1.	One sheet. Food laboratory desk for schools.	Price 10c.
Ky. 11.712-2.	Three sheets. Built-in cabinet between kitchen and dining room.	Price 30c.
Ky. 11.712-3.	One sheet. A work table and a push table for the kitchen.	Price 10c.
Ky. 11.712-4.	One sheet. A kitchen coal box.	Price 10c.
Ky. 11.712-5.	One sheet. Broom holder.	Price 10c.
Ky. 11.712-6.	One sheet. Footstools. Three designs.	Price 10c.
Ky. 11.712-7.	One sheet. Shipping box for canned goods.	Price 10c.
Ky. 11.712-8.	One sheet. Homemade dumb waiter.	Price 10c.
Ky. 11.712-9.	One sheet. Concrete incinerator.	Price 10c.

## BARN FRAMING

Ky. 11.7200-2.*	One sheet. Standard plan for Wing joist frame, self-supporting gambrel roof.	Price 10c.
Ky. 11.7200-3.*	One sheet. Standard plan for Shawver framing for self-supporting gambrel roof.	Price 10c.
Note: These types of framing can be used on any barn listed in this circular.		
Ky. 11.7200-4.*	One sheet. Gambrel roof end bracing.	Price 10c.
Ky. 11.7200-5.*	One sheet. Cross section and side framing details of a gambrel roof using the self-supporting braced rafters for 36' span, side walls sheathed with vertical boxing.	Price 10c.
Ky. 11.7200-6.*	One sheet. Cross section and side elevation showing details of framing a gambrel-roof barn using Shawver trusses of 36' span.	Price 10c.
Ky. 11.7200-7.*	One sheet. Framing for gable roof 36' span.	Price 10c.
M. W. 72001.	One sheet. Gambrel roof truss. Details for 32', 34', and 36' spans. Distance between trusses 12 ft.	Price 10c.
M. W. 72002.	One sheet. Shawver roof truss. Details for 32', 34', and 36' spans. Distance between trusses 12 ft. All members are of dimensioned lumber.	Price 10c.
M. W. 72003.	One sheet. Gothic roof rafters. Laminated rafter construction, spacing 2 ft. For spans 32', 34', and 36'.	Price 10c.
M. W. 72004.	One sheet. Gothic roof rafters. Sawed rafter construction, rafter spacing 2 ft. Details for 32', 34', and 36' barn widths.	Price 10c.

\*Illustrated in Kentucky Extension Circular No. 128.



**GENERAL-PURPOSE BARN.**

- Ky. 11.721-1. Four sheets. Size 36'x48'. Has space for 5 horses, 6 cows, with feed alley between, and feeding space at one end. It is a bank barn having a driveway into loft, concrete foundation and walls for ground floor. Loft is frame structure, 12-foot studding, self-supporting gambrel roof. Price 40c.
- Ky. 11.721-3.\* Three sheets. Size 40'x74'. Remodeled tobacco barn, containing four box stalls, 10'x12'; feed and harness room, open pen for sheep and feeding space in one end for cattle. Self-supporting gambrel roof. Price 30c.
- Ky. 11.721-4.\* Three sheets. Size 30'x40'. Space for three horses and five cows, one calf pen, harness room, extra space for storage, concrete foundation, gambrel roof and a large hay loft. Price 30c.
- Ky. 11.721-5. Four sheets. Size 36'x82'. Has 5 tie stalls, 2 horse box stalls, one calf pen, one cow pen, harness room, 8 cow stalls, feed room, milk room, loft space and a self-supporting gambrel roof. Price 40c.
- Ky. 11.721-6.\* Four sheets. Size 36'x52'. Has 4 box stalls, gear room, feed room, 10 cow stalls, 10' driveway across barn, loft space and self-supporting gambrel roof. Price 40c.
- Ky. 11.721-7. Four sheets. Size 34'x75'. A combination of mule and cattle-feeding barn. Has 7 box stalls, gear room, rat-proof corn crib, space for one car load of steers, hay storage space, concrete foundation and a self-supporting gambrel roof. Price 40c.
- Ky. 11.721-8. Three sheets. Size 32'x62'. Has 7 box stalls, one calf pen, harness room, feed room, 5 cow stalls, loft space and a gable roof. Price 30c.
- Ky. 11.721-9.\* Five sheets. Size 36'x56'. Has 4 tie stalls, bull pen, cow pen, 18 cow stalls, loft space and self-supporting gambrel roof. Price 50c.
- Ky. 11.721-10. Five sheets. Size 36'x70'. A combination cow and mule barn. Has 6 cow stalls, one calf pen, one cow pen, 4 tie stalls for mules, one box stall, tool room, feed room, hay storage space, and concrete roof. Price 50c.
- Ky. 11.721-11. Four sheets. Size 36'x60'. Has 14 cow stalls, 5 single mule box stalls, harness room, feed room, dairy room, loft space, concrete foundation, and self-supporting gambrel roof. A 34' cross section can be furnished for this barn so as to make a barn 34'x60'. Price 40c.

\*Illustrated in Kentucky Extension Circular No. 128.

- Ky. 11.721-12. Two sheets. Shows how to convert part of a standard 40'x72' air-curing tobacco barn into a dairy barn. Plan provides 16 cow stalls and a feed room. Price 20c.
- Ky. 11.721-13. Two sheets. Size 32'x36'. Has 4 double box stalls, 2 cow stalls, feed and harness rooms, 12-ft. studs, gambrel roof. Price 20c.
- M. W. 72101. Five sheets. Size 32'x32'. Gambrel roof of braced rafter construction; 4 grain bins, 2 double horse stalls, 2 cow stalls, 1 box stall; concrete foundation and concrete floor in bins, box stall and cow stalls; optional floor plan with 4 box stalls, 2 cow stalls, a feed room and a harness room. Price 50c.
- M. W. 72102. Two sheets. Size 18'x32'. Frame construction; one story; 4 cow stalls, 2 double horse stalls, concrete foundation and floors; height to plate, rear 6 ft., front 12 ft. Price 20c.
- M. W. 72111. Four sheets. Size 30'x34'. Frame construction; one story; gable roof; height to plate 7 ft. Concrete foundation and floors; 5 horse stalls, 4 cow stalls, 1 box stall, 1 grain bin; insulated roof. Alternate construction with hay mow addition. Gable roof; optional floor plan for 5 horse stalls, 6 cow stalls and 2 grain bins. Price 40c.
- M. W. 72112. Five sheets. Size 34'x60'. Gambrel roof of braced rafter construction. Has 12 cow stalls, maternity pen, 2 grain bins, space for young stock, 4 horse stalls, 1 box stall, and hay storage space in loft. Price 50c.
- M. W. 72121. Five sheets. Size 36'x64'. Gambrel roof of braced rafter construction; "face out" arrangement, 10 cow stalls, 8 horse stalls, 2 feed bins, 1 harness room, 1 box stall, 1 bull pen; 8-ft. driveway thru center; concrete foundation, floor and footings. Six optional floor plans. Price 50c.

#### HORSE OR MULE BARN.

- Ky. 11.722-1. Three sheets. Frame structure mule barn, 36'x120'. Seven box stalls, two open feed runways, concrete foundation, 12' studding, loft space and gambrel roof. Price 30c.
- Ky. 11.722-2. Four sheets. Size 36'x48'. Has 6 double box stalls, harness room, cornerib, loft space and self-supporting gambrel roof. Price 40c.
- M. W. 72221. Three sheets. Size 36'x58'. Gambrel roof of braced rafter construction; concrete foundation; earth floor; single stalls for 16 horses, box stall, feed room, 2 harness and repair rooms, "face in" arrangement; optional floor plans for a "face out" arrangement. Price 30c.

## DAIRY BARNS.

- Ky. 11.723-1.\* One sheet. Shows the cross section of an up-to-date dairy barn floor. Price 10c.
- Ky. 11.723-2. Five sheets. Size 36'x68'. Has concrete foundation and floors, frame structure with self-supporting gambrel roof, loft space, 20 cow stalls, facing in, calf pen, milk room, 2 cow pens, feed room and silo. Price 50c.
- Ky. 11.723-3. Three sheets. Size 34'x38'. Has concrete foundation and floors, 18 cow stalls, feed room and silo. It is a one-story gable roof, frame structure without a loft. Price 30c.
- Ky. 11.723-4. One sheet. "Lean-to" dairy barn. Price 10c.
- Ky. 11.723-5. Four sheets. Size 36'x106'. A bank barn having 30 cow stalls, 4 box stalls, feed room, milk room, hay loft, concrete foundation and floors and a gable roof. Price 40c.
- Ky. 11.723-6. Four sheets. Size 36'x83'. Bank barn for 36 cows, bull pen and calf pen, gambrel roof. Price 40c.
- Ky. 11.723-7.\* Four sheets. Size 36'x60'. Has 16 cow stalls, feed room, milk room, 2 calf pens, bull pen, cow pen, hay loft, concrete foundation and floor, and self-supporting gambrel roof. Price 40c.
- Ky. 11.723-8A. One sheet. Size 18'x72'. Ten cow stalls, calf pen, feed room, milk room, shed roof. Cows face out. Shows how to make this barn into a gable roof, one-story barn having two rows of cow stalls. Price 10c.
- Ky. 11.723-8B. One sheet. Same as 11.723-8A. Cows face in. Price 10c.
- Ky. 11.723-9. One sheet. Size 24'x35'. 20-cow milking shed. Price 10c.
- Ky. 11.723-10. Five sheets. Size 34'x60'. Braced rafter gambrel roof. Cows face out or in, 25 cow stalls, feed room and storage for grain and hay in loft. Price 50c.
- M. W. 72301. Seven sheets. Size 32'x80'. Braced rafter gambrel roof; "face in" arrangement, 4-ft. feed alley; 24 stanchions, 3 cow pens, 1 calf pen, 1 bull pen, 1 feed room, concrete floors and foundations; frame construction with details for alternate wall construction of masonry; (3 detail sheets, also to be used for plans 72311 and 72321.) Price 70c.
- M. W. 72311. Seven sheets. Size 34'x64'. Braced rafter gambrel roof; "face out" arrangement; 7-ft. driveway thru center; 23 stanchions, 2 cow pens and 1 feed room, concrete floors and foundations; frame construction with details for alternate wall construction of masonry; 4 optional floor plans (3 detail sheets for 72301-72311-72321.) Price 70c.

\*Illustrated in Kentucky Extension Circular No. 128.

- M. W. 72321. Seven sheets. Size 36'x80'. Braced rafter gambrel roof; "face out" arrangement; 8-ft. driveway; 28 stanchions, 2 calf pens, 1 cow pen, 1 bull pen, feed room, 2 bins and silo at side of barn; concrete floors and foundations; frame construction with details for alternate wall construction of masonry; (3 detail sheets for 72301, 72311, 72321). Two optional floor plans for the dairy type barn and 5 suggested floor plans for the "cow pen" type supplied with these plans. Price 70c.
- M. W. 75221. Four sheets. Milking barn, 19'x40'. Frame construction, gable roof, concrete foundation and floor; "walk thru" type; six stalls and an attached milk house separated by 6-foot passage; for a dairy herd of 30 to 60 cows. Price 40c.

**CATTLE FEEDING BARN.**

- Ky. 11.724-1. Three sheets. Size 34'x60'. Two-carload feeding barn having feeding bunkers in center with 14' feeding space on each side; a feed storage room and 2 silos; concrete foundation, frame walls; 12' studding; loft space and self-supporting gambrel roof. Price 30c.
- Ky. 11.724-2. Five sheets. Size 36'x76'. Two-carload feeding barn, same as 11.724-1, except that it has an open shed at one end. Price 50c.
- Ky. 11.724-3. Three sheets. Cattle feeding barn, 36'x48'. Gambrel roof. Price 30c.
- Ky. 11.724-4. Twelve sheets. Fancy beef cattle L-shaped barn; main barn 36'x108'. Wing 24'x100'. Main barn provides 7 double box stalls, 3 single box stalls, 6 double tie stalls for nurse cows, office, wash room for cattle, wash room for herdsmen, feed room, grain elevator and dump, 2 silos, dairy room, loft for storage of hay and grain. The wing provides 9 double and 1 single tie stalls for young steers, feeding pens, dairy stable for milking 4 cows at a time, and loft space for storage of hay, bedding and grain. Shows arrangement of the outdoor pens and stock watering tank. Price \$1.20.
- M. W. 72401. One sheet. Cattle shed, 20'x68' with L 20'x24'. Gable roof; open front; drop siding, concrete foundation and footings. Shows trough for lot feeding. Trough can be built against wall for range feeding. Bill of materials. Price 10c.
- M. W. 72421. Three sheets. Beef cattle barn, 36'x48'. Gambrel roof, braced rafter construction; concrete foundation and footings; houses 25 to 30 cattle, hay bunkers along wall, mangers in center separated by feed alley; 4'x8' concrete water tank at end of feed alley. Price 30c.

M. W. 7

Ky. 11.7

U.S. 11.

U.S. 11.

Ky. 11.

Ky. 11.

M. W. 7

M. W. 7

Ky. 11.

Ky. 11.

Ky. 11.

\*11

- M. W. 72431. Three sheets. Beef cattle barn, 52'x72'. Pole type barn, gable roof; hay storage in center, space for cattle on one side and 6 box stalls with grain bin and feed alley on other side. Price 30c.

#### SHEEP BARNES.

- Ky. 11.725-1. Four sheets. Size 34'x40'. A two-story frame structure containing 7 sheep pens, 10'x10', feed room and loft space for storage. Gable roof. Price 40c.
- U.S. 11.725-2. One sheet. One story, gable roof, frame sheep barn 16'x24'. Price 10c.
- U.S. 11.725-3. One sheet. Sheep shed, open front, frame, 16'x24'. Price 10c.
- Ky. 11.725-4. Four sheets. Size 25'x48'. One-story gable roof, containing 4 feeding pens, feed bunkers used for dividing floor space into pens. Price 40c.
- Ky. 11.725-5. Ten sheets. A T-shaped barn consisting of a two-story gambrel roof barn 36'x60' and two shed wings 25'x48' each. Main barn provides 4 large feeding pens, shearing pen, wash room, office and feed room. Each wing provides 4 large feeding pens. Feed bunkers are designed to be used as partitions for pens; thus pens can be made any size desired for lambing and feeding. Loft of main barn provides space for hay, bedding and storage of grain. Price \$1.00.
- M. W. 72501. One sheet. Sheep shed. Size 24'x32'. Frame construction; shed roof, height of studs, rear 7 ft., front 10 ft.; entirely enclosed; double sliding doors; feed alley and rack, 2 lambing pens, space for 30 to 35 sheep; foundation and floor under feed rack and in feed alley are of concrete. Price 10c.
- M. W. 72502. Two sheets. Sheep shed 22'x42'. Frame construction; combination roof; open front; concrete foundation; 6-ft. feed alley, feed rack, space for 40 to 45 sheep, divided into 3 compartments. Price 20c.

#### HOG HOUSES.

- Ky. 11.726-1. One sheet. Size 8'x8'. Type A portable house. Price 10c.
- Ky. 11.726-2.\* One sheet. Size 8'x8'. Shed-roof portable house. Price 10c.
- Ky. 11.726-3. Four sheets. Size 25'x48'. Half-monitor type house designed to face south, concrete foundation and floors, 10 pens, 8' driveway and storage room. Price 40c.

\*Illustrated in Kentucky Extension Circular No. 198.

- Ky. 11.726-4. Four sheets. Size 25'x48'. Iowa-sunlight type, designed to have length of building to run north and south. Has concrete foundation and floors, 10 pens, 8' driveway and storage rooms. Price 40e.
- Ky. 11.726-5. Four sheets. Size 25'x80'. Iowa-sunlight type, like 11.726-4 but having space for 24 pens. Price 40e.
- Ky. 11.726-6.\* One sheet. Size 10'x12'. Two-pen shed type of portable house. Price 10e.
- Ky. 11.726-7. Three sheets. A 35' octagonal judging or sales pavilion. Price 30e.
- Ky. 11.726-8.\* Size 8'x8'. Sunlight portable house. Price 10e.
- Ky. 11.726-9. One sheet. 8'x8' portable house, with sun porch.  $\frac{1}{3}$  span gable roof. Front roof may be opened to permit sunshine to enter. Price 10e.
- Ky. 11.726-10. Three sheets. Community house 25'x90' 8". Has 16 farrowing pens, feed room, 3 storage rooms, herdsman's room, and scales room. May be constructed of cement blocks, clay blocks or wood. Has an insulated gable roof. The pens are made of removable steel gate panels arranged so as to divide the house into pens of various sizes. Price 30e.
- M. W. 72601. One sheet. Portable "A" house, 6'x7'. A-type, 5 ft. to ridge; doors in ends; air vents in gables; no floor, no skids; 12-inch boards for sides fitted with galvanized metal battens. Price 10e.
- M. W. 72602. One sheet. Modified "A" type house, 6'x8'. Front sloping roof, rear side slopes from ridge to ground; 2'-9" front studs, vents in gables, floor, on skids; sides covered with matched lumber placed vertically. Missouri type; one or two pens. Price 10e.
- M. W. 72603. One sheet. Straw loft farrowing house, 8'x14'. Shed roof, two pens, rear studs 4 ft., front studs 7 ft.; pen doors in front; front panels above doors counterbalanced with straw panel; removable partition between pens, pig rails; on skids; horizontal sheathing; roof covered with galvanized metal or prepared roofing. Price 10e.
- M. W. 72604. One sheet. Movable combination roof house, 6'x8'. Gable roof, front studs 3 ft., rear studs 2 $\frac{1}{2}$  ft., rear and front doors, air vents in gables, roof door in front, on skids, may be equipped with floor, 12 inch boards for sides fitted with battens. Suggested plan of a house for 2 sows also given. Price 10e.

\*Illustrated in Kentucky Extension Circular No. 198.

M. W. 72

M. W. 72

M. W. 72

M. W. 72

Ky. 11.7

Ky. 11.7

Ky. 11.7

Ky. 11.7

Ky. 11.7

Ky. 11.7

Ky. 11.7

Ky. 11.7

Ky. 11.7

\*11  
\*\*11

- M. W. 72611. Three sheets. Single row farrowing house, 12'x42'. Frame construction; 6 pens all south exposure; concrete floor; removable pen partitions; roof windows; may be enlarged in units of two pens; combination roof. Alternate details for masonry walls. Price 30c.
- M. W. 72612. Four sheets. Half-monitor house, 22'x42'. Frame construction; half-monitor roof; concrete floor; 6 farrowing pens; pen for stock hogs; 2 feed bins; 1 mixing room; feed alley. Alternate floor plan for 10 pens, size 22'x34'. Price 40c.
- M. W. 72613. Three sheets. Gable roof house, 24'x42'. Hollow tile walls; gable roof with sunlight windows; concrete floor; 10 farrowing pens; 2 feed bins; feed mixing room, feed alley, east and west exposure. Alternate details for frame walls. Price 30c.
- M. W. 72621. Two sheets. Straw loft house 22'x32'. Frame construction, gable roof; loft; concrete wall 4 ft., ceiling height 7 ft.; 7 pens, feed room, 4-ft. alley; windows in walls and ends; concrete floor; pig fenders, horizontal siding for walls. Price 20c.

## POULTRY HOUSES.

- Ky. 11.727-2.\* Two sheets. Kentucky 20'x20'. Shed-roof house for 100 birds. Price 20c.
- Ky. 11.727-3.\*\* One sheet. 10'x12' brooder house. Price 10c.
- Ky. 11.727-4. One sheet. 12'x12' shed-roof poultry house, or house for mating pen, for 35 hens. Price 10c.
- Ky. 11.727-5.\* Two sheets. 20'x24'. Two-story gable-roof feed house or service building, designed to fit between 20-foot units of shed-roof house 11.727-2. Price 20c.
- Ky. 11.727-6. Two sheets. 14'x60'. Shed-roof poultry house, divided into 10 pens. Price 20c.
- Ky. 11.727-7.\*\* One sheet. 10'x10'. Shed-roof summer shelter for pullets. Price 10c.
- Ky. 11.727-8. One sheet. 9'x10'. Gable-roof range shelter for poultry. Price 10c.
- Ky. 11.727-9. Two sheets. 20'x50'. 200-hen laying house with 10'x20' one-story feed room. Same style as 11.727-2. Price 20c.
- Ky. 11.7271-1. One sheet. 5'x6'. Kentucky turkey brooding coop. Price 10c.

\*Illustrated in Kentucky Extension Circular No. 107.

\*\*Illustrated in Kentucky Extension Circular No. 157.

- M. W. 72701. Two sheets. Movable brooder house, 10'x12'. Light frame construction, shed roof, side door entrance. Price 20c.
- M. W. 72702. Two sheets. Movable brooder house, 12'x16'. Same construction as above. Price 20c.
- M. W. 72703. Three sheets. Stationary brooder house, 16'x36'. Frame construction, combination roof, insulated. Details for alternate masonry wall construction. Price 30c.
- M. W. 72711. Two sheets. Straw-loft poultry house, 16'x16'. Frame construction, gable roof, walls lined with matched lumber or insulating board, 24 inches loose straw in loft. Concrete floor over hollow clay tile. With roosts, water stand, mash hopper and nests. Price 20c.
- M. W. 72712. One sheet. Straw-loft poultry house, 16'x30'. Frame construction, combination roof, walls and sloping ceiling lined with matched lumber, space above filled with straw and wall spaces filled with shavings or flax straw. Three-inch concrete floor over 6" cinders. 2 pens. Price 10c.
- M. W. 72713. Two sheets. Straw-loft poultry house, 20'x20'. Single unit, frame construction, concrete foundation and floor; rear wall and part of ceiling covered with ½ inch insulating board; remainder of ceiling covered with straw on top; doors in front, small windows under roosts in rear wall; vents under eaves in rear wall. Price 20c.
- M. W. 72714. Three sheets. Straw-loft poultry house, 20'x70'. Gable roof, open front, straw loft, hollow tile walls, three 20' units. 10-ft. feed and storage room, 335 birds. Details for alternate frame wall construction. Price 30c.
- M. W. 72721. One sheet. Shed-roof poultry house, 16'x30'. Two pens, frame construction, concrete foundation, fine sand floor; ceiling and wall lined with matched lumber; space between rafters filled with sawdust or flax straw. Price 10c.
- M. W. 72741. Two sheets. Half-monitor poultry house, 22'x24'. Frame construction, concrete floor over hollow clay tile; roosts in rear half and scratching area in front half; for 150 fowls. Price 20c.
- M. W. 72751. Four sheets. Two-story poultry house, 26'x100'. Frame construction, gable roof, outside walls of bevel siding, inside walls and ceiling lined with ½ inch insulating board; 2 stories, steam heated, 9 pens and 1 room for feed and furnace; 5 ventilating flues. Price 40c.
- M. W. 77771. One sheet. Summer shelter for poultry, 10'x10'. Light frame construction, gable roof, roosts, sides covered with poultry netting. Price 10c.
- M. W. 77781. One sheet. Sun parlor. Matched flooring on bottom, sides and top covered with 1 inch poultry netting. Price 10c.

Ky. 11.7

Ky. 11.7

M. W. 7

U. S. 11.

U. S. 11.

Ky. 11.7

M. W. 7

M. W. 7

M. W. 7

M. W. 7

M. W. 7

M. W. 7

M. W. 7



## STORAGE BUILDINGS.

## For Grain and Hay.

- Ky. 11.731-1. One sheet. 24'x any length. Details of frame construction of an open hay shed. Price 10c.
- Ky. 11.731-2. One sheet. Hay shed, 27'-8" wide and any length desired. Price 10c.
- M. W. 73101. One sheet. Hay shed, 24'x60'. Pole construction, capacity 60 tons; sides and ends open to a height of 8 feet; 8'x12' hay door; gable roof; five 12-ft. bents; 12 ft. driveway thru center bent; roof trusses of 2"x6" plank, spaced 12 ft.; plate and ridge 20 and 29 feet respectively. Price 10c.
- U. S. 11.732-1. One sheet. Double corn crib with driveway between, 28'x32'. Capacity 2000 bushels. Price 10c.
- U. S. 11.732-6. One sheet. Granary, capacity 1800 bushels. Extra hall storage 780 bushels. Price 10c.
- Ky. 11.733-1. One sheet. Plan for homemade stave silo, 12'x36'. Price 10c.
- M. W. 73201. One sheet. Double corn crib, 26'x32'. Frame construction; concrete foundation; floor and shelling trench; gable roof; 10' driveway; height to plate 12½'. Capacity 2050 bushels. Price 10c.
- M. W. 73211. One sheet. Movable grain bin, 10'x10'. Frame construction; gable roof; 6" drop siding; height to plate 8'. Capacity 500 bus. Price 10c.
- M. W. 73212. One sheet. Movable grain bin, 12'x14'. Same construction as 73211. Capacity 1000 bus. Price 10c.
- M. W. 73213. One sheet. Granary, 12'x24'. Frame construction; concrete foundation and floors; walls covered with galvanized sheet iron and lined with shiplap; gable roof; also galvanized metal covering; 2 roof ventilators; bin partition; capacity 2000 bus. Price 10c.
- M. W. 73214. One sheet. Granary, 31'x32'. Frame construction; concrete floor and foundation; gable roof; 11' driveway; 4 ground floor bins and 2 overhead bins above driveway; hatchways in roof for movable elevator. Capacity 5000 bus. Price 10c.
- M. W. 73221. Two sheets. Corn crib and granary, 27'x32'. Frame construction; concrete foundation; floor and shelling trench; 11' driveway; gable roof; overhead bins; adapted for built-in elevator. Capacity: grain 3500 bus.; ear corn 3300 bus. Price 20c.
- M. W. 73231. Three sheets. Farm elevator, 30'x30'. Frame construction; concrete foundation and floors; gambrel roof; 10' driveway; built-in elevator; overhead bins above driveway and power room. Capacity 10,000 bus. Price 30c.

**Fruit and Vegetable Storage.**

- Ky. 11.734-1. Three sheets. Above-ground apple storage house, 16'x24'. Frame construction. Side walls and ceiling insulated with wood and building paper providing insulation equivalent to 3" cork. Price 30c.
- Ky. 11.734-2. One sheet. Concrete storage cellar, 12'x20'. Price 10c.
- U. S. 11.734-3. One sheet. Sweetpotato house, 20'x40'. One-story, frame construction. Price 10c.
- U. S. 11.734-5. One sheet. 16'x29' 6". Sweetpotato house. One story, frame construction. Price 10c.
- M. W. 73401. Two sheets. Fruit and vegetable cellar 20'x36'. Concrete construction; 4 ventilating intake flues at corners and one outtake flue at center; 3-foot earth fill over roof; approach and entrance at level of floor; capacity 4000 bus. Price 20c.
- M. W. 73402. One sheet. Fruit and vegetable cellar, 8'x10'. Concrete construction, dirt floor; entrance thru short tunnel from basement of house; equipped for ventilation; opening to outside for filling; tile drain around foot of wall; earth fill over roof; capacity 150 to 200 bus. Price 10c.
- M. W. 73411. One sheet B. M. Sweetpotato house, 12'x16'; 400 to 500 bus. in crates; frame construction; gable roof; pier and girder foundation, 3 slatted bins; provisions for stove; floor and roof ventilators; windows in ends. Price 10c.
- M. W. 73421. One sheet. Storage cellar with work room, 14'x20'. Garage and work shop over storage cellar; entrance to cellar thru short tunnel from basement of house; trapdoor in floor for filling; cellar of concrete, garage of frame construction; capacity 400 to 450 bus. Price 10c.

**Tobacco Barns and Equipment.**

- Ky. 11.735-1. Three sheets. Standard 6-acre barn, 40'x72', having both vertical and horizontal ventilator doors and the new ridge ventilator for air-curing Burley tobacco. Price 30c.
- Ky. 11.735-2. Two sheets. Tobacco stripping shed, 14'x24', lighted by skylights in roof. Price 20c.
- Ky. 11.735-3. One sheet. Four acre, fire-curing barn, 24'x24', convertible into horse barn having 4 box stalls, gear room, and feed room. Price 10c.
- Ky. 11.735-4. Two sheets Fire-curing dark-tobacco barn, 20'x48'-8", to hold approximately 5.5 acres. Barn is provided with special ventilators and fire protector screens. Price 20c.

- Ky. 11.735-5. One sheet. 1½-acre air-curing Burley tobacco barn, 28' x36'. Vertical side ventilators and new ridge ventilator. Price 10c.
- Ky. 11.735-6. One sheet. Pan for steaming tobacco beds, 9'x12'. Price 10c.
- Ky. 11.735-7. One sheet. Tobacco press for 100-125 sticks. Price 10c.

**Machine Sheds, Shops and Garages.**

- Ky. 11.741-1. Two sheets. Machine shed, 24'x60'. Frame construction, concrete piers, workshop in one end, sliding doors in front. Price 20c.
- Ky. 11.741-2. Three sheets. Combination machinery building, 16'x32', having space for a workshop, truck and tractor and a corn crib. Price 30c.
- Ky. 11.741-3. One sheet. Garage for 3 cars or trucks, 20'x32'. Price 10c.
- M. W. 74111. One sheet. One-car garage, 12'x20'. Frame construction; concrete foundation and floor; gable roof; floor drain; space for one car; work bench at end. Details for alternate masonry wall construction. Price 10c.
- M. W. 74112. Two sheets. Two-car garage and shop, 18'x24'. Frame construction; concrete foundation and floor; gable roof; space for truck, car and repair shop; side door entrance; details for alternate masonry wall construction. Price 20c.
- M. W. 74113. Two sheets. Two-car garage, 18'x20'. Frame construction; concrete foundation and floor; hip roof; floor drain; side door entrance. Details for alternate masonry wall construction. Price 20c.
- M. W. 74121. One sheet. Machinery shed and shop, 18'x46'. Frame construction; concrete foundation and footings, 10'x18' shop with concrete floor in one end of shed; gable roof; 3 large sliding doors for the front openings, each 12' wide and 8' high. Price 10c.
- M. W. 74122. Two sheets. Machinery shed, 24'x36'. Frame construction; concrete foundation and piers; gable roof with scissors truss; continuous doors in front 10' wide; large door in end. Shed can be built any desired length. Price 20c.
- M. W. 74123. Three sheets. Machinery shed, 26'x70'. Frame construction, concrete foundation and piers; gable roof; 15'x25' shop at one end; adapted to house thresher separator; two optional floor plans. Price 30c.

**Manure Pit.**

- M. W. 74301.\* One sheet. Concrete manure pit, 18'x37'. Walls and floor are in concrete; gable roof of frame construction over pit and driveway, which may serve as a shelter for manure spreader. Price 10c.

**Ice Houses.**

- M. W. 74401. One sheet. Ice house, 12'x14'. Concrete foundation; gravel floor; gable roof; insulation provided by 12-inch layer of either sawdust or flax straw on floor and sides; roof lined with matched lumber. Details for frame wall construction. Capacity 16 tons. Price 10c.
- M. W. 74411. Two sheets. Ice house and cold storage room 14'x26'; concrete foundation and floor; frame construction; combination roof; ice storage room for about 45 tons and an adjoining cold storage room and vestibule; walls covered with drop siding over T. & G. flooring. Alternate details for wall section. Price 20c.

**Smokehouses and Meat Storage.**

- U. S. 11.751-1. Two sheets. Frame smokehouse, 6'x8'. Price 20c.
- U. S. 11.751-2. One sheet. Insulated meat-curing box, 4' 10"x6' 11 $\frac{3}{4}$ " x7' 11 $\frac{3}{4}$ ". Capacity 1800 to 2000 pounds of meat and 1600 pounds of ice. Price 10c.
- M. W. 75101. One sheet. Frame smokehouse, 6'x8'. Frame construction; concrete foundation; gable roof; concrete firebox with terra cotta pipe duct to house. Price 10c.
- M. W. 75111. One sheet. Masonry smokehouse, 8'x9'. Concrete block or hollow tile construction, concrete foundation and floor, flat roof of reinforced concrete; adjacent concrete fire pit with duct thru wall; 2 roof ventilators. Price 10c.

**Lime Shed.**

- Ky. 11.754-1.\*\* One sheet. A community lime shed, 10'x36'. Price 10c.

**MILK HOUSES AND EQUIPMENT.**

- Ky. 11.752-1. Two sheets. Milk house, 20'x26', concrete or clay block. Price 20c.

\*Illustrated in Kentucky Extension Circular No. 128.

\*\*Illustrated in Kentucky Extension Circular No. 174.

- Ky. 11.752-2.\*\* One sheet. Milk house, 14'x26', concrete foundation extending 4 feet above concrete floor; upper walls and roof of frame construction. Price 10c.
- Ky. 11.752-3.\*\* One sheet. Milk house 10'x12', one room. Price 10c.
- Ky. 11.752-4A\*\*\* Two sheets. Two-room milk house, 12'x14'. Frame construction; designed to meet requirements of model milk ordinance. Price 20c.
- Ky. 11.752-4B. Two sheets. Two-room milk house, 12'x14'. Same as 11.752-4A. Concrete block construction. Price 20c.
- Ky. 11.752-5. Three sheets. Milk house, 18'x26', frame construction, boiler room, wash room, and milk room. Price 30c.
- Ky. 11.752-6. Three sheets. Milk house, 14'x24', frame construction, boiler room, wash room, milk room. Price 30c.
- M. W. 75201. One sheet. Milk house, 7'x7'. One room; concrete foundation and floor; frame construction; shed roof; concrete cooling vat for 4 to 10 gallon cans; window on each side. Price 10c.
- M. W. 75202. One sheet. Milk house, 11'x11'. One room; concrete or tile block construction; concrete foundation and floor; gable roof with ventilator; concrete cooling tank; windows on each side. Price 10c.
- M. W. 75203. Three sheets. Two-room milk house, 12'x24'. Wash room, milk room with insulated water cooling tank for 4 to 10 gallon cans; concrete foundation and floor; vertical boards and battens for siding; gable roof. Details for alternate wall construction of either concrete or hollow tile building blocks. Price 30c.
- M. W. 75204. Three sheets. Farm bottling plant, 14'x24'. Work room for bottling milk, storage room and refrigerator; boiler and fuel in an adjoining room; masonry construction of either concrete or hollow tile building blocks; concrete foundation and floors; gable roof with ventilator. Details for alternate frame wall construction. Price 30c.
- M. W. 75211. Five sheets. Creamery, 32'x72'. Masonry construction, concrete floor, hollow tile walls, flat wood roof; large work room, office, cold room, receiving room, boiler room, supply storage room and rest room; adapted for a small organization with not more than 1000 cows. Price 50c.
- M. W. 75212. Three sheets. Creamery, 42'x72'. Masonry construction, concrete floor, hollow tile walls, wood hip roof; large work room, boiler room, storage room, receiving room, office, refrigerator and compressor rooms; second floor may be used for additional storage. Price 30c.

\*\*Illustrated in Kentucky Extension Circular No. 128.

\*\*\*Illustrated in Kentucky Extension Circular No. 249.

- Ky. 11.7521-1. One sheet. Milk bottle sterilizing box, 3' 4" x 6' 5", capacity 24 dozen bottles. Price 10e.
- Ky. 11.7521-2. One sheet. Concrete milk-cooling tank, 38"x10'. Price 10e.
- Ky. 11.7521-3. One sheet. Insulated refrigeration box, 3' 2" x 4' 6" x 38", made of wood and metal. Space for four 10-gal. cans and a block of ice or refrigeration unit. Price 10e.
- Ky. 11.7521-4. One sheet. Milk-can drying rack. Price 10e.

### LIVESTOCK EQUIPMENT.

#### For Cattle.

- Ky. 11.770-1. One sheet. Stock lifter for cattle. Price 10e.
- Ky. 11.77011-1. One sheet. Portable calf stanchions. Price 10e.
- Ky. 11.77011-2\*. One sheet. Homemade wooden cow stanchions. Price 10e.
- Ky. 11.77013-1. One sheet. Ensilage feeding car. Price 10e.
- Ky. 11.772-6. One sheet. Cattle feed trough, calf stanchion and wool tying box. Price 10e.
- Ky. 11.772-13. One sheet. Portable combination hay and grain feed rack for cows. Price 10e.
- Ky. 11.775-2.\* One sheet. Bull pen and breeding rack. Price 10e.
- Ky. 11.775-3.\* One sheet. Breeding rack for cattle. Price 10e.
- M. W. 77201. One sheet. Circular concrete stock tank, diameter 12', depth 1' 8"; 6" concrete pavement, 6' wide, around tank; overflow pipe. Construction details of forms. Price 10e.
- M. W. 77202. One sheet. Rectangular concrete stock tank 4' x 8' x 2½'; inside of walls sloped to relieve pressure from freezing. Construction details of forms. Price 10e.
- M. W. 77411. One sheet. Grain bunk for cattle, 4'x12'. Height of top of bunk 2' 6". Price 10e.
- M. W. 77412. One sheet. Combination grain bunk and hay rack, 4'x12'. Height of top of bunk 2' 6"; height of rack 3'. Price 10e.
- M. W. 77413. One sheet. Grain self feeder for cattle. Gable roof, doors for filling in roof; accelerator; capacity ranging from 170 to 345 bu. depending upon length and height. Movable. Price 10e.
- M. W. 77461. One sheet. Cattle stocks 4½'x8½'. A device to hold cattle when treating injured animals, trimming hoofs, dehorning, etc.; heavy timber construction mounted on a concrete base. Price 10e.
- M. W. 77901. Two sheets. Bull pen and shed. Shed 10'x12', frame construction, shed roof; details for breeding chute and various types of fence construction. Price 20e.

\*Illustrated in Kentucky Extension Circular No. 128.

- Ky. 11.7762-1. One sheet. Farm gates. Price 10c.  
 Ky. 11.7762-2. One sheet. Farm gate, 12 ft. Price 10c.

**For Sheep.**

- Ky. 11.772-1. One sheet. Sheep rack and feed bunker. Price 10c.  
 Ky. 11.772-8. One sheet. One-way feeding rack for sheep. Price 10c.  
 Ky. 11.773-1. One sheet. Dipping vat for sheep. Price 10c.  
 Ky. 11.7761-1. One sheet. Lamb creep for 50 lambs. Price 10c.  
 M. W. 77511. One sheet. Feed bunk for sheep, 2½'x8'. Rectangular trough 11" above ground; simple construction; easily moved. Price 10c.  
 M. W. 77512. One sheet. Feed rack for sheep, 3½'x12'. Hopper rack; may be constructed in 6' lengths. Price 10c.  
 M. W. 77651. One sheet. Dipping vat for hogs and sheep. Concrete pit; plans for arrangement of cutting gates and draining pens. Price 10c.

**For Hogs.**

- Ky. 11.772-2. One sheet. Single-hopper self-feeder. Price 10c.  
 Ky. 11.772-3. One sheet. Double self-feeder. Price 10c.  
 Ky. 11.772-4. One sheet. Hurdle, concrete trough and feeding chute. Price 10c.  
 Ky. 11.772-5. One sheet. Concrete feeding floor and shipping crate for hogs and sheep. Price 10c.  
 Ky. 11.772-7. One sheet. Self-feeder for ear corn. Price 10c.  
 Ky. 11.772-9. One sheet. Alfalfa rack. Price 10c.  
 U. S. 11.775-4. One sheet. Breeding crate. Price 10c.  
 M. W. 77611. One sheet. Self-feeder, 15"x3'x3'. Feed trough on one side only; capacity 5 bu.; hinged top. Price 10c.  
 M. W. 77612. One sheet. Self-feeder, 2'x6'x4'. Two-way feeder with individual troughs and covers; capacity 17 bu. Price 10c.  
 M. W. 77613. One sheet. Self-feeder 6'x16'. Two bins; concrete base; stationary. Capacity 650 bu.; height to plate 7 ft.; doors in ends for filling. Price 10c.  
 M. W. 77614. One sheet. Alfalfa rack, 3½'x8'x3'. Feeding space for 30 pigs or 16 hogs. Price 10c.  
 M. W. 77615. One sheet. Ear corn self-feeder, 4'x5'x4½'. One side of gable roof hinged for filling; adjustable opening; mounted on slides for moving; capacity 36 bu. Price 10c.

- M. W. 77621. One sheet. Breeding and ringing crate. Adjustable crate for breeding, ringing and vaccinating hogs. Price 10c.
- M. W. 77631. One sheet. Loading chute, 3'x12'. For loading hogs, sheep and calves; mounted on wheels. Price 10c.
- M. W. 77641. One sheet. Shipping crate 2'x4½'x3'. For shipping hogs or sheep; sliding end gate, diagonally braced. Price 10c.
- M. W. 77661. One sheet. Concrete wallowing pool, Depth from 8' to 18"; concrete construction; overflow pipe. Price 10c.
- M. W. 77671. One sheet. Pig creep 32" high. To be used in corner of lot against field fences. Price 10c.

#### POULTRY EQUIPMENT.

- Ky. 11.7271-2. One sheet. Reel mash self-feeder. Price 10c.
- Ky. 11.7271-3. One sheet. Range self-feeder. Price 10c.
- Ky. 11.7271-4. One sheet. Range self-feeder. Price 10c.
- Ky. 11.7271-5. One sheet. Grit hopper, watering table, green feed hopper. Price 10c.
- Ky. 11.7271-6. One sheet. Fattening coop and a catching coop. Price 10c.
- Ky. 11.7271-7.\* One sheet. Reel mash-hopper. Price 10c.
- Ky. 11.7271-8.\*\* One sheet. Metal baby chick feeder. Price 10c.
- Ky. 11.7271-10.\*\* One sheet. Reel feeder for baby chicks (wood). Price 10c.
- U. S. 11.771-2. One sheet. Water barrel on sled. Price 10c.
- Ky. 11.772-12. One sheet. Battery brooder for 3 to 6, and 6 to 9, weeks old chicks. Price 10c.
- Ky. 11.772-13.\*\* One sheet. Metal drum brooder stove. Price 10c.
- M. W. 77711. One sheet. Chick feeder. Trough for baby chicks; length 4'; made from standard lath. Price 10c.
- M. W. 77712. One sheet. Inside mash hopper. Constructed of 1 by 4 and 1 by 6 inch stock; for inside use; capacity 3 gallons. Price 10c.
- M. W. 77713. One sheet. Outdoor feeder. Universal feeder for inside and outside use; removable legs, constructed of 1 by 12 and 1 by 4 inch stock; capacity 4 bu. Price 10c.
- M. W. 77714. One sheet. Oyster shell feeder. Built between studdings of the poultry house. Price 10c.
- M. W. 77715. One sheet. Alfalfa rack, 16"x24", height 3'; movable; mounted on legs. Price 10c.

\*Illustrated in Kentucky Extension Circular No. 107.  
 \*\*Illustrated in Kentucky Extension Circular No. 157.



- M. W. 77716. One sheet. Alfalfa rack, built between studdings of the poultry house; of poultry netting, with solid top cover. Price 10c.
- M. W. 77761. One sheet. Sanitary runway for chicks, 10'x12'. Height 3½', bottom covered with ½" hardware cloth, sides and top covered with 1" poultry netting. Price 10c.
- M. W. 77791. One sheet. Watering stand for baby chicks, 2'x5'. Light wood frame covered with hardware cloth. Price 10c.

**LIME KILNS.**

- Ky. 11.754-2.\* One sheet. Details and instructions for building a lime burning kiln. Price 10c.
- Ky. 11.754-3.\* One sheet. Lime stack. Price 10c.

**HOTHOUSES.**

- Ky. 11.792-1. One sheet. Plant house, 11' 4"x12'. Constructed of greenhouse sash; heated by stove. Price 10c.

**SEWAGE DISPOSAL EQUIPMENT.**

- Ky. 11.8511-2.\*\* One sheet. One-chamber septic tank of reinforced concrete; for a family of six to eight persons. Price 10c.
- U. S. 11.8512-1.\*\* Two sheets. Concrete vault sanitary privy, U. S. Dept. of Agriculture plan 670-E, No. 1297. Price 20c.

**WATER SUPPLY AND STORAGE SYSTEMS.**

- Ky. 11.8553-1. One sheet. Reinforced concrete tank, 20' in diameter, 18' deep; capacity 35,000 gallons. Price 10c.
- Ky. 11.8553-2. One sheet. Reinforced concrete tank 16' in diameter, 16' deep; capacity 20,000 gallons. Price 10c.
- Ky. 11.8553-3. One sheet. Reinforced concrete tank, 12'x16', capacity 13,500 gallons; and one 14'x16' tank, capacity 18,400 gallons. Price 10c.
- Ky. 11.8553-4. One sheet. Reinforced concrete tank, 18' 6" in diameter, 10' high, capacity 19,700 gallons. Designed to be placed underground. Price 10c.
- M. W. 85521. One sheet. Concrete cistern filter, 3'x4'. Two-compartment filter 3' 8"x4' 8"x3'. Water passes thru sand, charcoal and screen. Price 10c.

\*Illustrated in Kentucky Extension Circular No. 247.

\*\*Illustrated in Kentucky Extension Circular No. 131.

- M. W. 85531. One sheet. Concrete tank, 12' in diameter, 16' high. Capacity 13,500 gals. Reinforced concrete construction with bottom of tank at grade level. Price 10c.
- M. W. 85532. One sheet. Concrete cistern. Details of form for 6', 8', 9' and 10' diameter. Alternate details for flat, round or conical top. Price 10c.
- M. W. 85533. One sheet. Brick cistern. Table of sizes for various capacities from 1700 gals. to 10,000 gals. Beehive filter and siphon overflow. Price 10c.

**TERRACING EQUIPMENT.**

- Ky. 11.2241-1. One sheet. Kentucky variable-grade terracing level. Price 10c.
- Ky. 11.2241-2. One sheet. Reversible terrace drag. Price 10c.

**MISCELLANEOUS.**

- Ky. 11.3134-1. One sheet. Potato grader. Price 10c.
- Ky. 11.3135-1. One sheet. Lespedeza seed pan to attach to a mower. Price 10c.
- Ky. 11.3164-1. Three sheets. "Michigan Homemade End-gate Lime Spreader." Price 30c.
- Ky. 11.319-1. One sheet. Bag holder. Price 10c.
- Ky. 11.333-1. One sheet. Hay or tobacco frame. Size 6' 8"x14'. Price 10c.
- Ky. 11.333-2. One sheet. Wagon hay rack having removable basket for handling hay or grain bundles. Price 10c.
- Ky. 11.3615-1. One sheet. A plank and a split log road drag. Price 10c.
- Ky. 11.3616-1. One sheet. Marl loader. Price 10c.
- Ky. 11.3616-2. One sheet. Chute for loading marl. Price 10c.
- Ky. 11.371-1. One sheet. Press box for curing bacon. Price 10c.
- Ky. 11.6116-1. One sheet. Device for making rope from binder twine. Price 10c.
- Ky. 11.772-10. One sheet. Sterilizing box for horse manure. Price 10c.
- Ky. 11.750-1. Two sheets. A beehive of 3 sections. Price 20c.
- Ky. 11.8555-1. One sheet. Hot and cold water system. Price 10c.

Kentucky Extension Circulars Containing Information  
On Farm Buildings and Equipment.

- No. 107. Housing Farm Poultry
- 120. Hotbeds and Cold Frames
- 125. Pitcher Pump Installations
- 128. Building Plans for the Dairy Farm
- 131. Septic Tanks for Sewage Disposal
- 139. A Simple Hot and Cold Water System for the Kitchen
- 157. Brooding Chicks Artificially
- 174. Making Limestone More Available for Farmers
- 198. Sunlight Movable Hog Houses
- 223. Loading and Spreading Marl
- 247. Burning Limestone for Agricultural Purposes
- 249. Producing Milk of Good Quality
- 266. Home Storage Structures and Equipment



by  
the  
wo