

COLLEGE OF LAW



S. B. ROYSTER



BERL BOYD



J. M. ALLEN



P. E. ASHBY



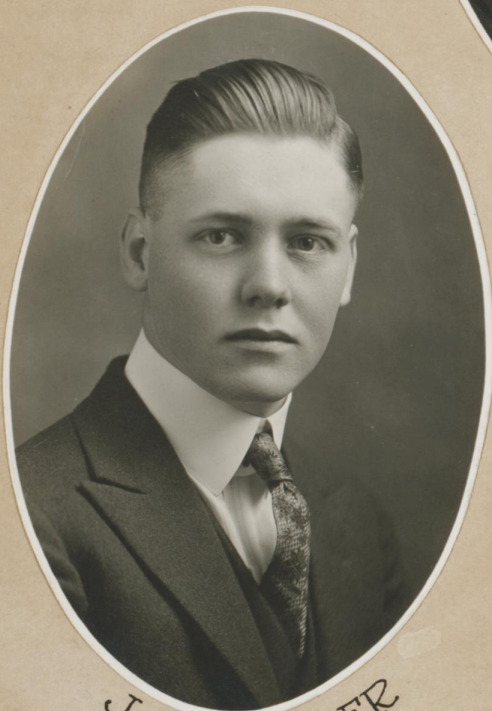
E. L. RITCHIE



B. M. STEWART



B. E. HICKERSON



J. C. FARMER



B. B. BAXTER



T. P. OLLIVER



P. H. VINCENT



G. F. GALLUP



G. LEDWIDGE

CLASS
OF
1922

UNIVERSITY OF
KENTUCKY