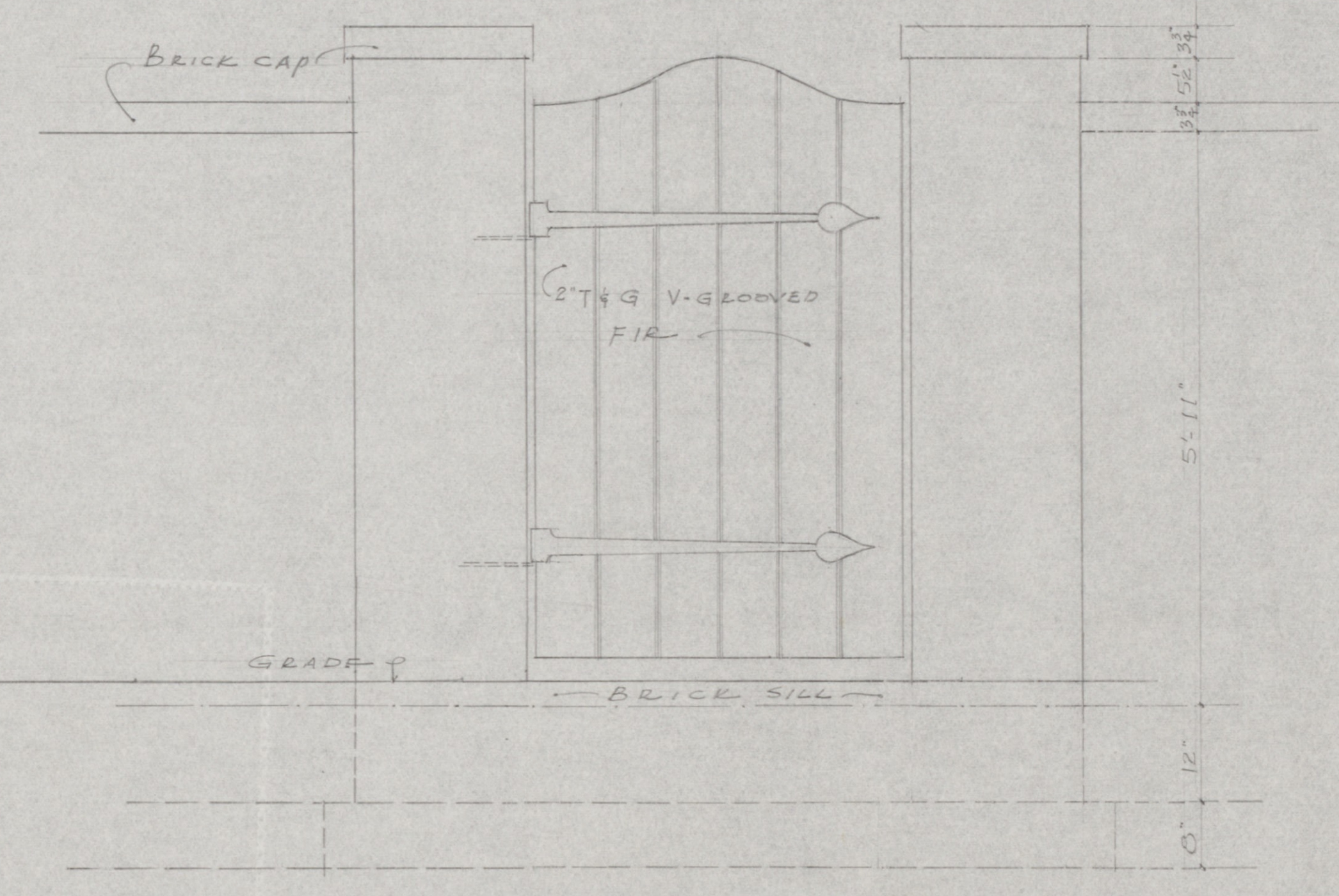
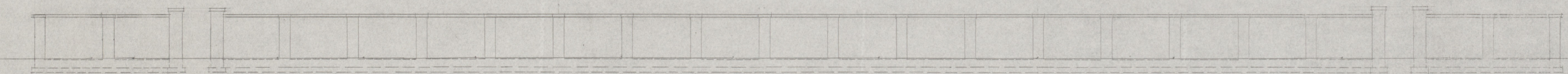


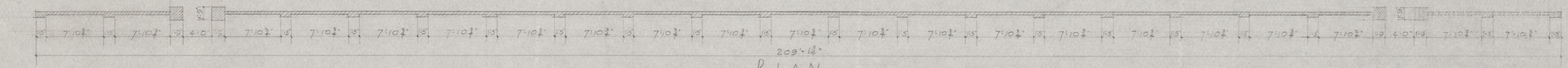
PLAN OF GATES
Sc. 3/4" = 1'-0"



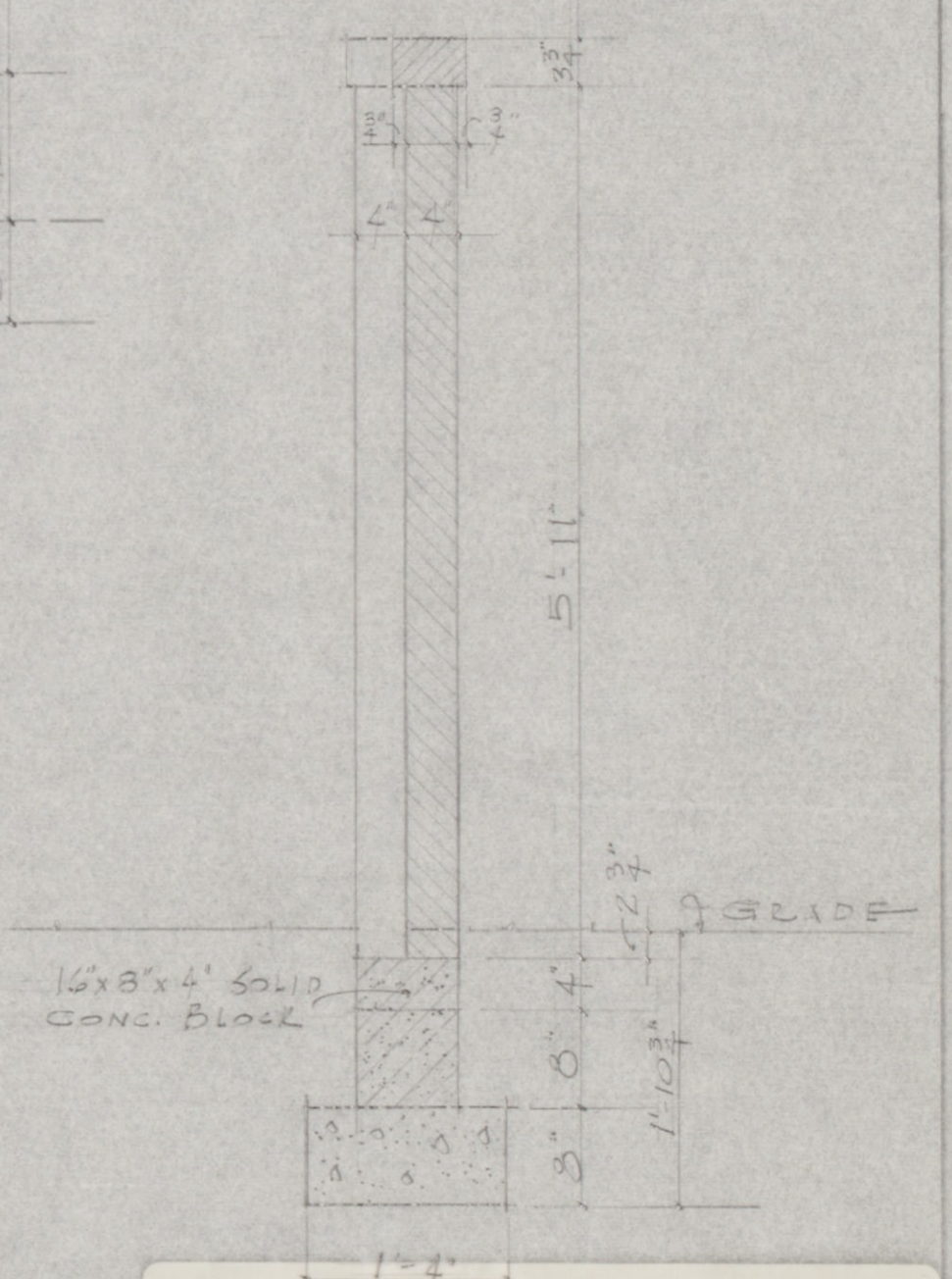
ELEVATION OF GATES
Sc. 3/4" = 1'-0"



ELEVATION
Sc. 8" = 1'-0"



PLAN
Sc. 8" = 1'-0"



GARDEN FENCE FOR DUNREATH
ESTATE OF
COL. & MRS. ROGER WILLIAMS
FAYETTE COUNTY KENTUCKY
ROBERT W. MEEKIN ARCHITECT LEX.-KY
MAY 5, 1935 DRAWN BY E. C. S.