

COLDSTREAM FARM,
LEXINGTON, KY.



BARBARA ISOBEL SHAFFER.



ELMER ELLSWORTH DALE SHAFFER

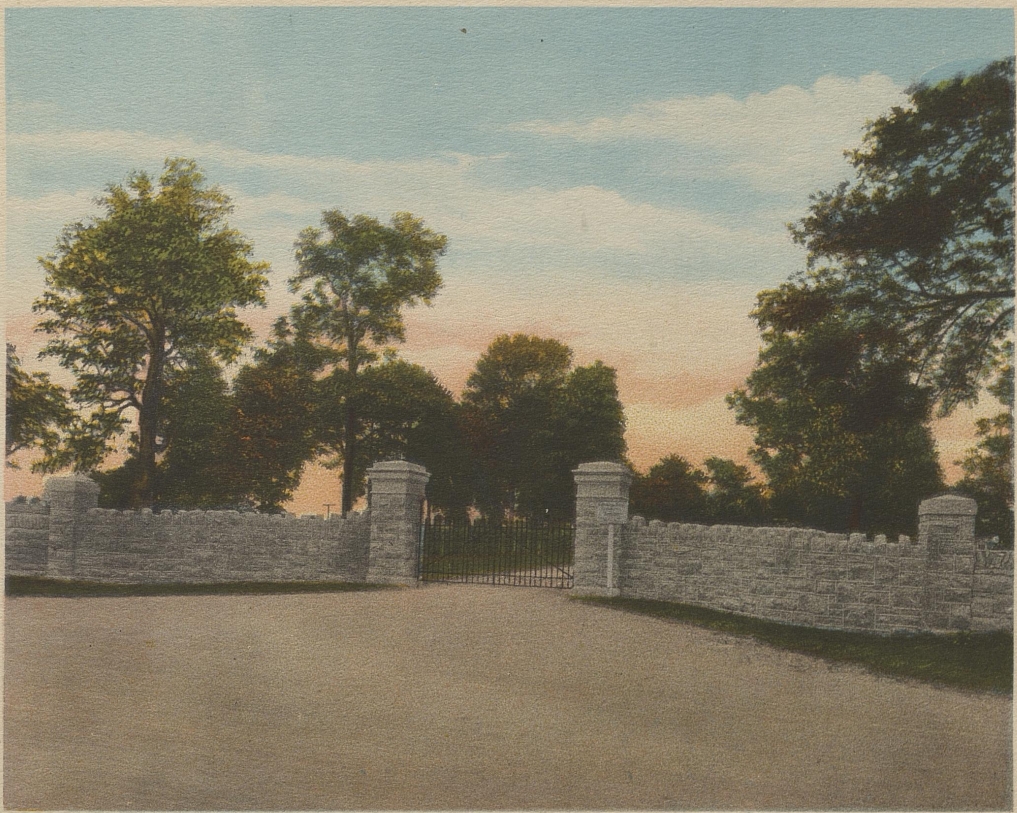
SOLE OWNERS OF COLDSTREAM FARM.



WILLIAM SHAFFER, PROUD GRANDFATHER OF THE PROPRIETORS OF COLDSTREAM FARM.

ENTRANCE.

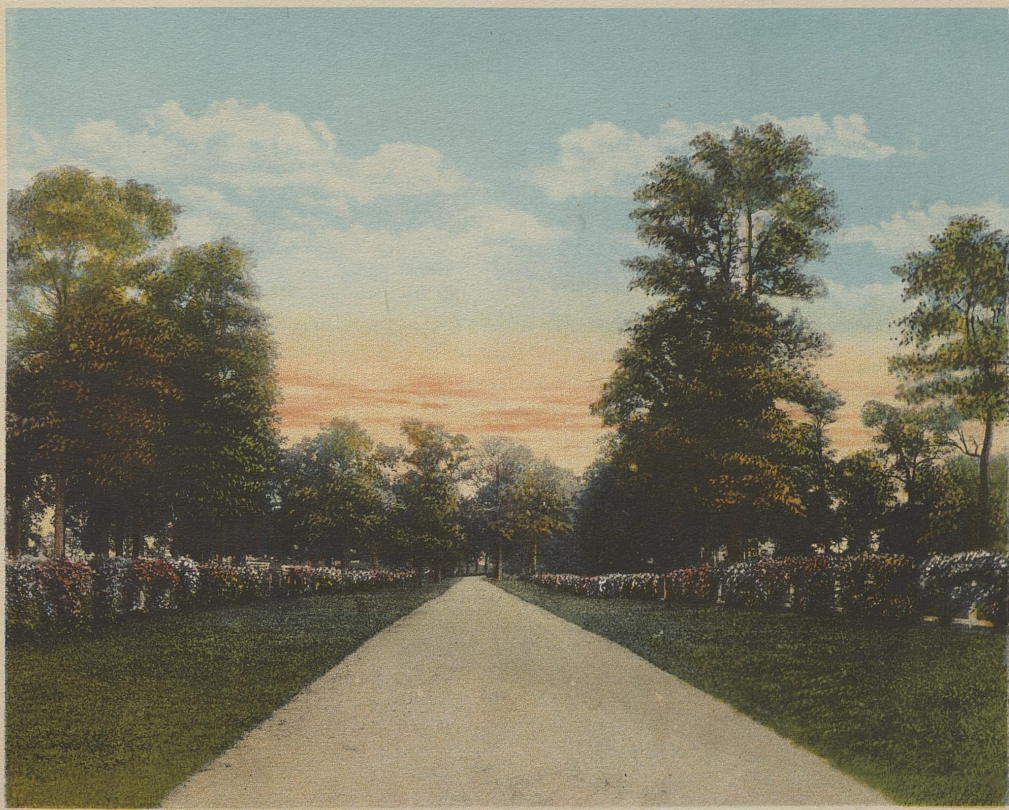
WHILE not extremely elaborate, it is wholly inviting. It is substantially built of grey limestone, artistically built in so as to harmonize with the quiet and peaceful landscape. In entering here one cannot suppress a feeling of gentleness, kindness. This, however, is only one of the five similar gateways breasting the three mile front of this mammoth carpet of Blue Grass.



ENTRANCE TO COLDSTREAM FARM.

DRIVE.

ONCE inside you find yourself engulfed in a gorgeous array of roses, honeysuckles and other beautiful fragrant blossoms. One scarcely knows whether to scream or sink down in amazement, and as you journey on you become engrossed in love of nature's beauty skilfully touched by the hand of man. Long lines of these beautiful blossoms border either side of the macadam drive and cling to the ornamental fence skirting the driveway. On and on you go until you reach the beautiful Shaffer Mansion.



DRIVE TO SHAFFER MANSION.

FRONT OF MANSION.

APPROACHING the front of the mansion you peer through a forest of mammoth old trees resting in a soft rich carpet of Blue Grass, dotted here and there with flowers and shrubs inhabited by squirrels and birds of numerous kinds that leap and fly while the gentle breezes fan the leaves of the mighty oaks. Occasionally you approach an inviting seat or swing beautifully secreted amongst the sweet flowers and shrubs.



FRONT VIEW, SHAFFER MANSION.

SIDE VIEW OF MANSION.

RESTING on nearly the highest elevation of Coldstream Farm stands the palatial Shaffer Mansion, built of buff-colored pressed brick, with pearl gray cornice and a roof of red terra-cotta tile. Its massive appearance is significant of the interior which must be seen to be appreciated.

The entire structure was erected with the future comfort of the children in mind, as it is the earnest wish of the parents that the children learn to love and to cling to the country farm and home life, and grow up to be pure Christian men and women and to serve their country most for the betterment and welfare of all mankind.



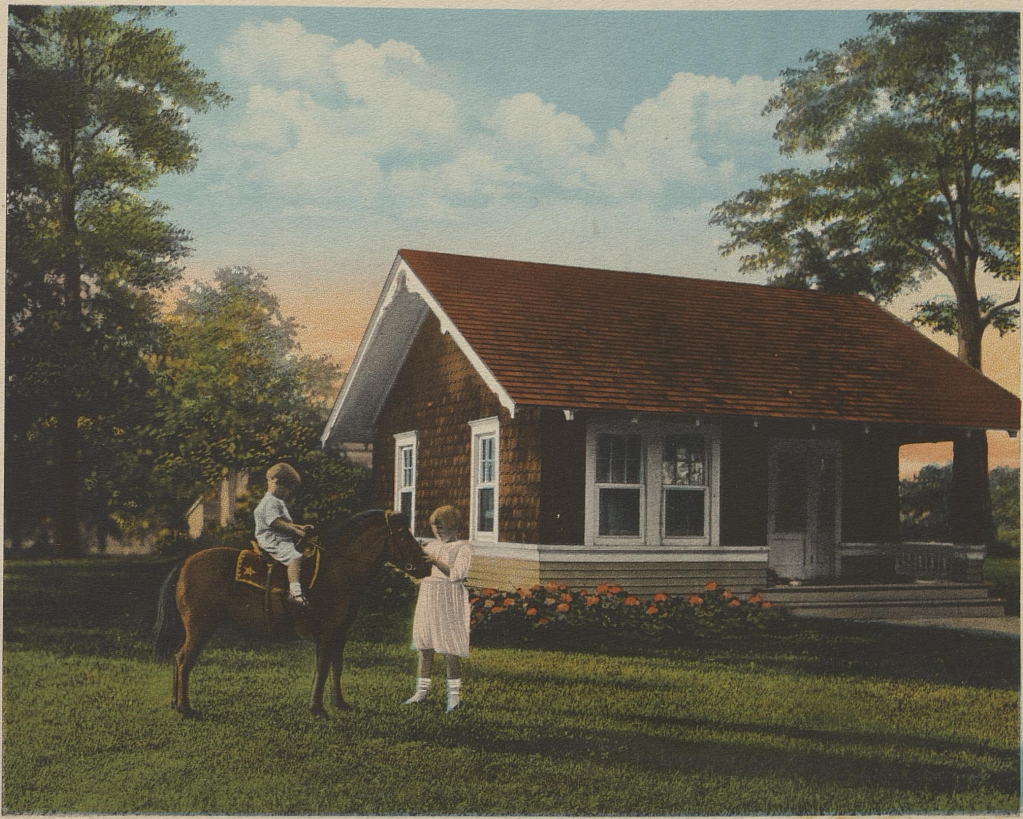
SIDE VIEW, SHAFFER MANSION.

PLAYHOUSE FOR CHILDREN.

TO some this might seem overdone but the principle is well aimed. This playhouse was built with a great deal of care and at considerable expense. It is modern throughout, embracing kitchen, dining room, library, laundry and bath, fully equipped in each department. It is electrically lighted and equipped.

The Motto: Better Citizens.

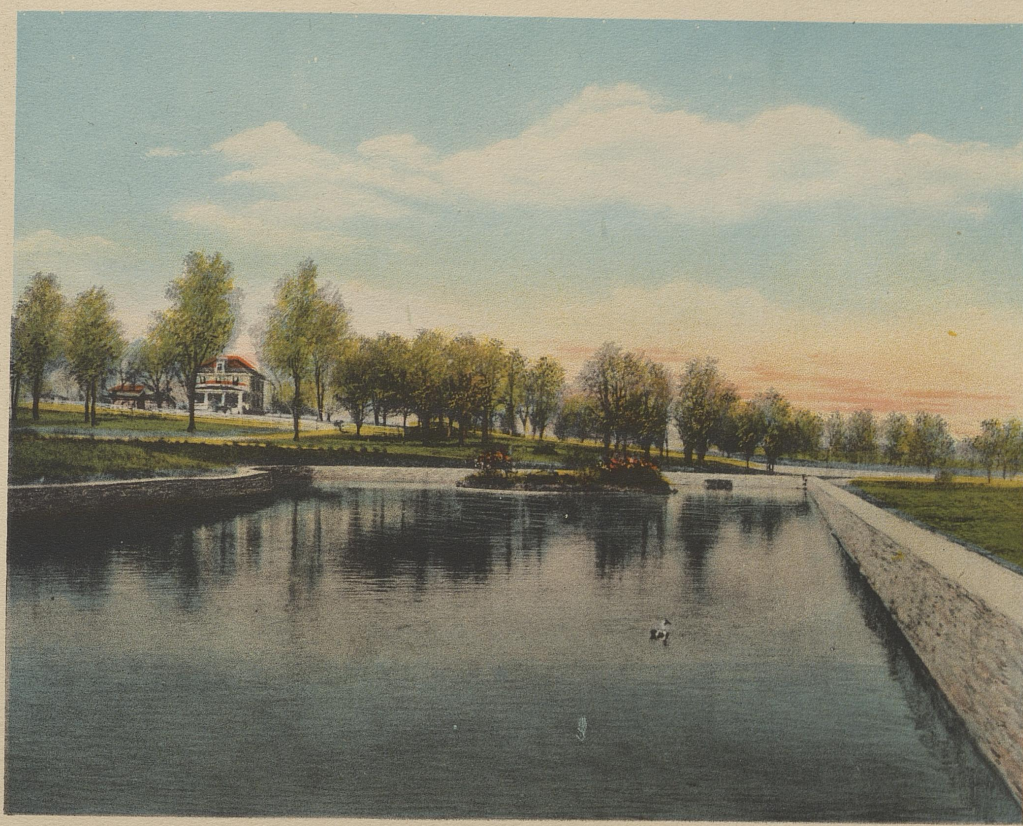
As the children play, they learn, they have a care, they work. Can you think of a higher ideal in a mother's foresight for her children? No.



PLAYHOUSE FOR SHAFFER CHILDREN.

MANAGER'S RESIDENCE.

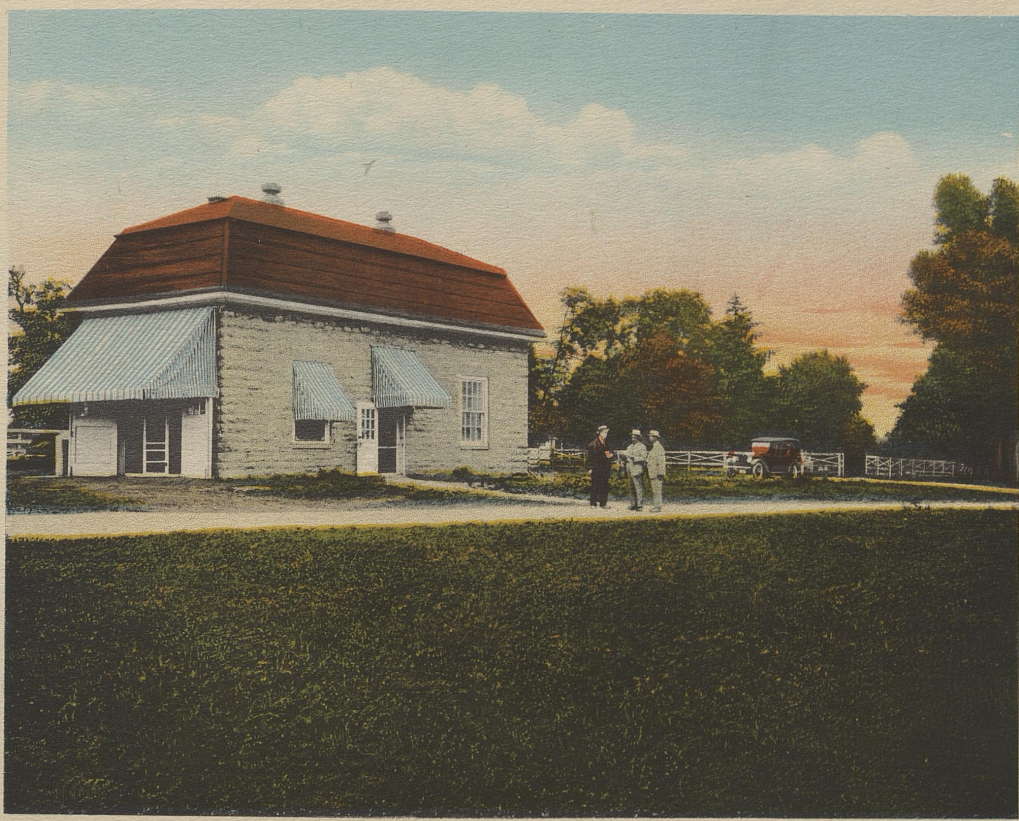
THE selection of the location of the manager's residence was not made thoughtlessly. The centralized elevated spot commands a view of beautiful landscape and affords easy access to all parts of the farm. This residence also is built of buff-colored pressed brick with pearl gray cornices and red terra-cotta tile roof overlooking a beautiful pool dotted with water fowls of numerous kinds.



VIEW SHOWING MANAGER'S RESIDENCE, COLDSTREAM FARM.

OFFICE—COLDSTREAM FARM.

THE office is a substantially made structure, built of cut stone, the walls being 25 inches thick. Aside from the general system of book-keeping, this office maintains a register for visitors, in which can be found the names and addresses of guests from all countries of the world.



OFFICE, COLDSTREAM FARM.

Study this pedigree carefully. Think what such a Sire means to the dairy world.

King Pontiac Hengerveld Fayne
H. B. No. Born
141141 April 12, 1914

King Pontiac Hengerveld Fayne has recently come into great prominence through the phenomenal records made by his dam and granddam. He is a bull of great individual merit and his future as one of the greatest sires is practically assured.

The sire is the renowned King of the Pontiacs, who is regarded as the greatest sire that ever lived. His daughters have made sensational records, fifteen world's butter records having been broken by them. He is the only sire having three 40-lb. daughters, also the only sire having twenty-six 30-lb. daughters. His dam is one of the best daughters of Hengerveld De Kol and his sire is the great Pontiac Korndyke, the only sire having two 40-lb. daughters to have a son with at least two 40-lb. daughters.

The dam is the second highest record cow in the world and her dam is the highest record cow in the world. She is by a fine son of the first "Century" sire, Hengerveld De Kol, and Allie Nig, one of the 5 only sires having 3 sons each of whom has sired a 30-lb. cow.

The records of his dam and dam's dam average 49.1 lbs. butter in 7 days.

KING OF THE PONTIACS 89087

284 A. R. O. daughters	
K. P. Pontiac Lass	44.18
Butter, 30 days	171.50
Butter, 60 days	308.81
Butter, 90 days	420.68
Butter, 100 days	405.16
Idleaze Pontiac Lass	42.48
Butter, 30 days	141.30
K. P. Diana Pieterse	40.15
23 others from 30 to 34.2 lbs.	
133 others from 20 to 29.2 lbs.	
(Semi-official records)	
K. P. Lady Ormsby	1,006.43
Milk	28,141.20
K. P. Liliith Clothilde	49,104.27
Milk	22,229.80
(World's milk record when made)	
K. P. Manor Kate	32m 10.23
Milk	22,106.40
(World's records)	
32 others from 600 to 948 lbs.	
140 A. R. sons	
Grandairs of	
Lady Netherland Pon	4y 43.50
(World's record)	
Albina Josie	5y 40.14
Butter, 7 days	4y 35.03
39 others from 30 to 40 lbs.	

SEGIS HENGVERVELD FAYNE JOHANNA 173739

Butter, 7 days	6y 47.35
Milk	699.10
Butter, 7 days	4y 28.67
Milk	532.20
Butter, 30 days	2,107.47
Milk	2,107.40
Butter, 7 days	8y 25.06
Milk	478.60
Butter, 7 days	26m 21.46
Milk	378.30
Butter, 30 days	87.22
Milk	1,536.20
Sister to the sires or dam of	
Milanhurst America D. K.	4y 34.08
Butter, 7 days	6y 33.07
Butter, 1 year	1,231.29
(Strictly official yearly record)	
2 others with 80 and 81 lbs.	

PONTIAC KORNDYKE 25982

146 A. R. O. daughters	
Fairview Korndyke Maia	47.11
Butter, 30 days	185.37
(World's 30-day record)	
Korndyke Winona	42.16
Pontiac Lady Korndyke	38.08
Butter, 30 days	156.93
(World's records when made)	
15 others from 30 to 27.5 lbs.	
68 others from 20 to 26.0 lbs.	
105 A. R. sons	

PONTIAC LUNDE HENGVERVELD 51585

Butter, 7 days	28.41
Milk	559.80
Butter, 14 days	55.85
Milk	1,121.50
Butter, 30 days	114.82
Milk	2,405.20
1 A. R. O. daughter	
1 A. R. son	
Sister to the sires or dams of	
Se. Hengerveld Fayne Joh.	47.11
Sunrise Heng. Caroline	41.06
Pontiac Pe.	37.63
88 others from 30 to 37.3 lbs.	

WOODCREST NIG DE KOL 40719

43 A. R. O. daughters	
Segis Heng. Fayne Johanna	47.35
Edith Fayne D. K.	36.01
Butter, 30 days	122.16
Lotta Belle Parana 2d	4y 27.54
Pausje Hengerveld B. K.	27.54
Allie Inka Fayne Hengerveld	20.37
Butter, 30 days	106.31
9 others from 20 to 25.5 lbs.	
20 A. R. sons	
Brother to the sires or dams of	
Sunrise Heng. Caroline	41.06
38 others from 30 to 37.6 lbs.	

SEGIS FAYNE JOHANNA 114658

Butter, 7 days	8y 50.68
(The only 50-lb. cow)	
Butter, 7 days	6y 35.30
Butter, 7 days	7y 33.79
Butter, 7 days	31.89
Butter, 7 days	30.06
3 A. R. O. daughters	
Segis Heng. Fayne Johanna	47.35
Piet. Fayne Johanna	4y 34.54
Butter, 7 days	32.76
Segis Fayne Pieterse	3y 22.66

MANOR JOSEPHINE DE KOL 22779

6 A. R. O. daughters	
Manor Star's Jos.	3 1/2y 20.90
Butter, 30 days	34.28
Susie Josephine	3 1/2y 20.72
5 A. R. sons	

BELLE KORNDYKE 13913

Butter, 7 days	10y 25.77
Milk	509.80
4 A. R. O. daughters	
Belle Korndyke's Daughter	25.42
3 others from 20 to 24.4 lbs.	
6 A. R. sons	

HENGVERVELD DE KOL 23102

116 A. R. O. daughters	
Princess Hengerveld B. K.	33.62
Bloom. Hengerveld Edith	32.45
8 others from 30 to 32 lbs.	
68 others from 20 to 29.8 lbs.	
66 A. R. sons	

LUNDE BEAUTY 34745

Butter, 7 days	23m 11.84
5 A. R. O. daughters	
Pontiac Lunde Hengerveld	28.41
Butter, 30 days	114.82
2 others with 22 and 24.4 lbs.	

HENGVERVELD DE KOL 23102 (See above)

Brother to the sires of	
River, Sadie D. K. Burke	32.29
Butter, 2 years	2,065.29
Milk	54,808.20
(World's milk record when made)	
15 others from 30 to 30.3 lbs.	

ALLIE NIG 59170

Butter, 7 days	25.49
Butter, 30 days	104.14
2 A. R. O. daughters	
Allie Nig 2d	25.98
Butter, 30 days	103.15
Allie Woodcrest	21.61
4 A. R. sons	

KING FAYNE SEGIS 46767

28 A. R. O. daughters	
Segis Fayne Johanna	50.68
(The only 50-lb. cow)	
3 others from 30 to 31.5 lbs.	
16 others from 20 to 28.2 lbs.	
26 A. R. sons	

VIKINA JOHANNA 64385

Butter, 7 days	14y 89.48
(World's record for age)	
Milk	613.80
Segis Fayne Johanna	50.68
(The only 50-lb. cow)	
Vikina Johanna 2d	32.45
Johanna Vikina Creamline	30.65

EMPRESS JOSEPHINE 3d's SIR MECHTHILDE 20255

3 A. R. O. daughters	
Belle of Lindenwald	18.67
8 A. R. sons	

AGNES DE KOL'S ELLEN 30228

Butter, 7 days	2 1/2y 13.08
(World's record when made)	
2 A. R. sons	

SILVAN HARTOG 8161

1 A. R. O. daughter	
Belle Korndyke	10y 25.77
Milk	609.80

KATE KORNDYKE 238DF

1 A. R. O. daughter	
Belle Korndyke	10y 25.77
Milk	609.80

DE KOL 2d's BUTTER BOY 21366

12 A. R. O. daughters	
3 with records of 20 to 22.1 lbs.	
21 A. R. sons	

MAGADORA 29237

Butter, 7 days	15.76
Milk	444.50
2 A. R. sons	

PRINCE OF NINETY 15243

1 A. R. O. daughter	
Lunde Beauty	22m 11.84

LUNDE 3d's PERFECTION 27881

3 A. R. O. daughters	
Lunde De Kol	4 1/2y 19.10
Milk	476.40

DE KOL 2d's BUTTER BOY 21366 (See above)

Brother to the sires of 5 with records of 30 to 34.3 lbs.	
---	--

MAGADORA 29237 (See above)

By a brother to the dam of	
Sadle Vale Con.	10y 80.04

PEARL OF THE DAIRY'S JOE DE KOL 23450

76 A. R. O. daughters	
38 with records of 20 to 30.5 lbs.	
10 A. R. sons	

NIG ALCARTRA 24 48402

Butter, 7 days	2 1/2y 11.17
6 A. R. O. daughters, 4 from 22 to 25.4 lbs.	
2 A. R. sons	

KING SEGIS 36168

87 A. R. O. daughters	
57 with records of 20 to 35 lbs.	
33 A. R. sons	

GRACE FAYNE 2d's HOMESTEAD 68828

Butter, 7 days	35.55
2 A. R. O. daughters with 24 lbs.	
2 A. R. sons	

JOHANNA RUE 3d's LAD 26939

40 A. R. O. daughters	
32 with records of 20 to 39.4 lbs.	
30 A. R. sons	

VIKINA CLOTHILDE 53604

Butter, 7 days	4y 15.33
3 A. R. O. daughters	
Vikina Johanna	14y 30.43

9.48
3.80
0.88
2.45
0.85
8.07
3.08
5.77
9.50
5.77
9.50
5.76
4.50
1.84
0.10
8.40
0.04
1.17
5.55
5.33
30.43



KING PONTIAC HENGERVELD FAYNE.

COLDSTREAM FARM.

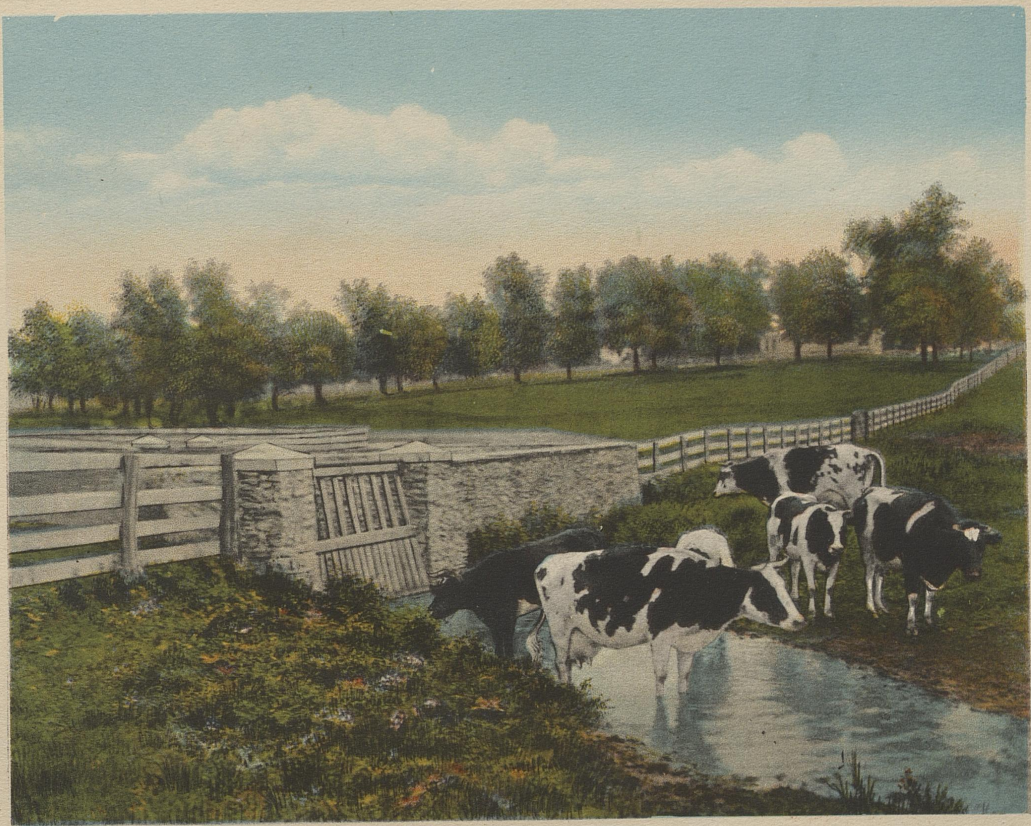
COMPRISES about 1500 acres of the popular Blue Grass land of Kentucky and is located about three miles from Lexington on the west side of the Newtown pike. This farm was once the home of the world-famous racer, Hanover, whose skeleton was unearthed by the State College and is now a part of the many relics of that Institute. Passing on from the ancient days of Hanover, we find many of the world's greatest performers are products of this now more famous Coldstream Farm until this season it gives to the turf Arion Guy, who won the great Kentucky three-year-old Futurity in three straight heats. This, however, does not appeal to Mr. Shaffer as it is his ambition to do his country a better service by converting these splendid acres into a great breeding plant and he is sparing nothing in getting together the very best animals both in breeding and in individuality that can possibly be obtained. With this in mind he has selected what he thinks will do the most good for his fellow-countrymen, namely Holstein cattle and Duroc-Jersey hogs.

The foundation of this great breeding plant is laid with these four following corner-stones.

Rolo Mercena de Kol, 51.93 pounds butter in 7 days, World's record cow of all breeds.

King Pontiac Hengerveld Fayne, Highest record bull in the world, whose dam made 47.35 pounds butter in 7 days, and whose grand-dam made 50.68 pounds in 7 days.

Taxpayers Model, the Annual Grand Champion Duroc Boar.
My Lady Friend, Grand Champion National Swine Show, 1920.
These are representatives of the herds in both departments.



VIEW OF COLDSTREAM FARM.

HELBON BEAUTY BONHEUR.

HELBON BEAUTY BONHEUR, Butter 7 days, 31.59 pounds, Milk, 638.50 pounds, a very noted show cow.

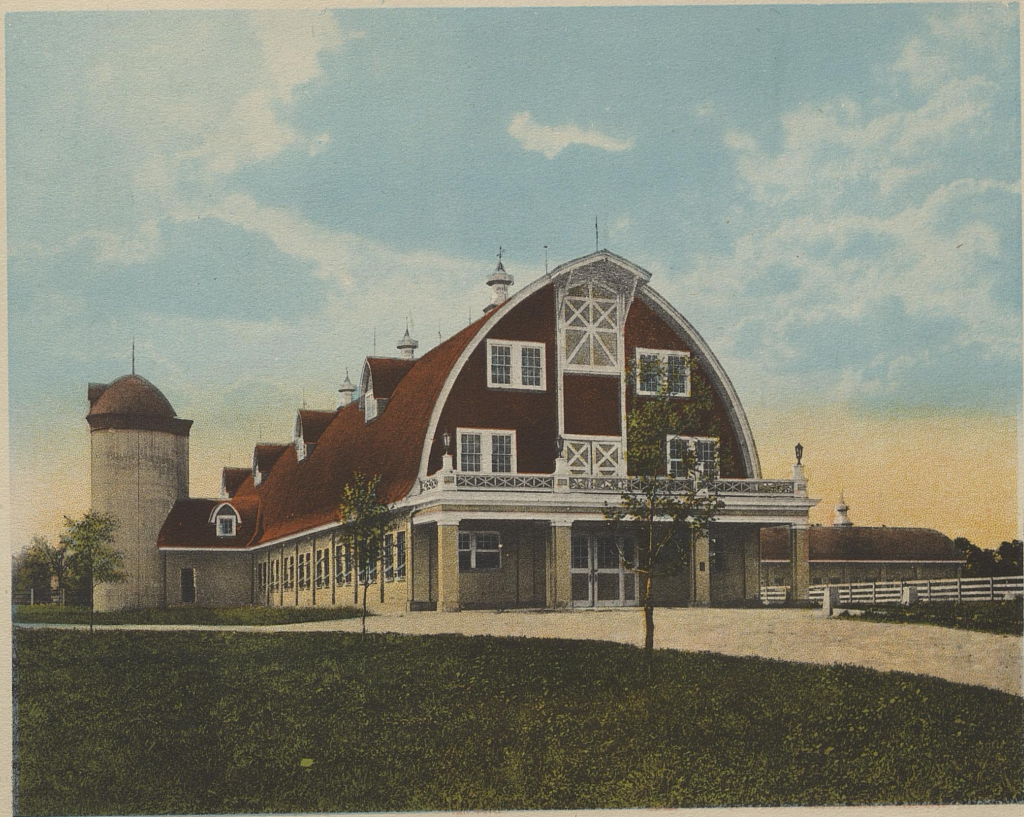
It is doubtful if any cow now living is a more perfect representative of show ring type, combined with extreme production. In addition to having made a 31-pound record herself and produced over 600 pounds of milk in 7 days, Helbon Beauty Bonheur has produced a daughter that has also made over 30 pounds and produced in excess of 600 pounds of milk. She is one of the finest cows on the American continent today. The accompanying picture shows a quartette of enthusiastic Holstein breeders admiring this great milk factory. Note the luxurious Blue Grass which is going to help her in the great work she is destined to do.



HELBON BEAUTY BONHEUR.

FRONT VIEW OF DAIRY BARN.

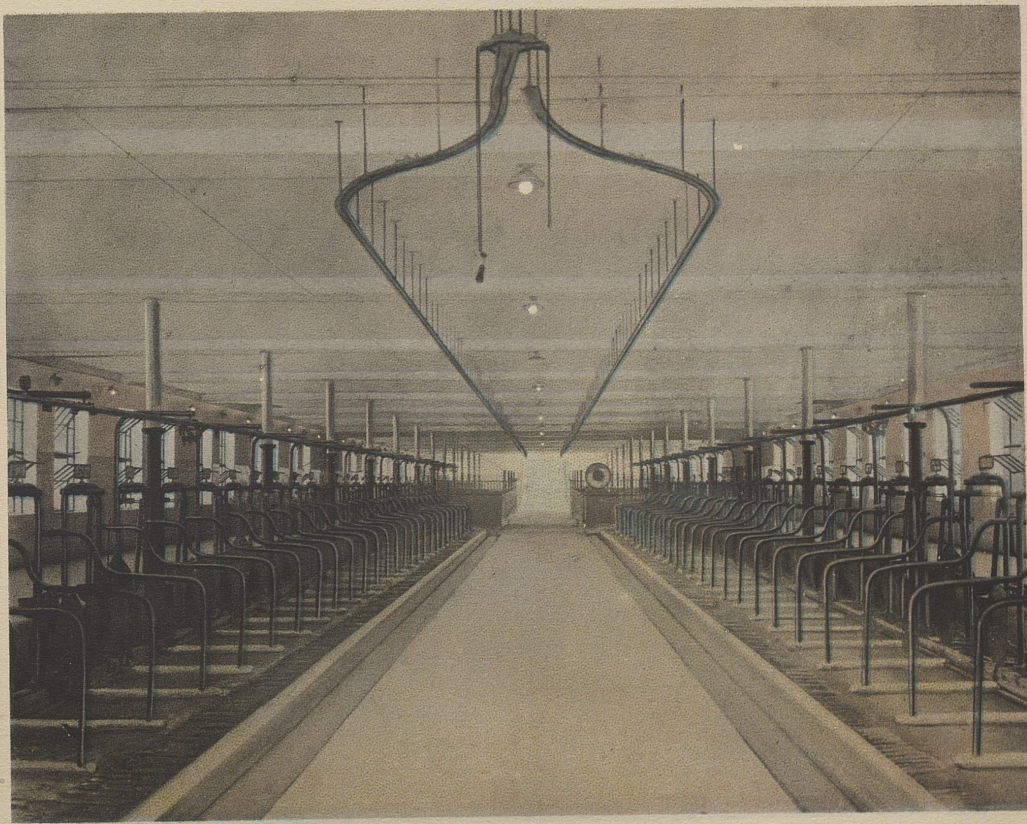
SHOWING an elevation of 48 feet with a spacious balcony illuminated by four huge electric lamps. From the balcony one can see for miles engulfing a landscape rich in agricultural properties. From the great double door off this balcony is exposed a mammoth loft, designed to hold 400 tons of loose hay and straw, which is elevated into the loft mechanically. The interior of this loft is so constructed as to not have one post or brace to obstruct its entire space of 48 feet wide, 36 feet high and 248 feet long. The red terra-cotta stuccogable supported by a buff-colored brick wall resting on a gray concrete base makes a very striking contrast.



FRONT VIEW, DAIRY BARN.

INTERIOR VIEW OF DAIRY BARN.

HERE we inspect the business end of one of the most modern equipped dairy barns in the world. Standing in long rows facing outward these great record cows receive the benefit of pure fresh air and sunlight beams down into their feeding mangers, at which point each cow is provided with an individual drinking cup. The cork floor also plays its part in adding comfort to these great matrons. The drive through the center of the barn makes it convenient for cleaning with a team, while the double litter carrier is used at intervals during the day. The long rows of electric lights illuminate the light pearl gray walls and ceiling which gives this great 248-foot tunnel the appearance of a beautiful white way. The large scale in the driveway serves to weigh animals, feed, etc., eliminating all guesswork so often practiced. Electric clippers, massage and milkers are installed and are used daily. These features together with the splendid ventilating system makes it as near sanitary as possible.



INTERIOR, DAIRY BARN, COLDSTREAM FARM.

PASTURE SCENE.

IN touring Coldstream Farm one frequently encounters scenes like this. Blue Grass and famous black and white cows basking in the shade of maple, elm, beech, locust and other pretty trees, while in the pools are Muscova ducks, white and black swans, and other water fowls floating gracefully and adding greatly to nature's beautiful landscape.



PASTURE SCENE, COLDSTREAM FARM.

SIDE VIEW OF DAIRY BARN.

A side view of this mammoth structure is food for the trained architect. The buff brick walls, white cornices, covered by a gracefully curved red terra-cotta asphalt shingle roof displaying a row of well placed dormers and ventilators together with the automatic steel sash windows, make an unusual sight for the tourist. The two silos are of a proper size to accommodate the stock kept inside. The annex is for test work only and is arranged with box stalls, individual electric lights, watering cups and ventilators. A supervisors room is practically located in this annex.



SIDE VIEW, DAIRY BARN, COLDSTREAM FARM.

Butter 7ds R. O. M. 51.93
 Milk 738.90
 Butter 30ds 201.17
 Milk 2930.60
 (World's butter record)
 Butter 60ds 342.58
 Best days butter 8.57
 Best days milk 125.80

ROLO MERCENA DE KOL

303130

Born JULY 2, 1912

E. T. No.

Rolo Mercena De Kol with her record of 51.93 lbs. holds the world's record and merits the distinction of being the only 51 lb. cow. She is the first and only cow in the world to produce over 200 lbs. butter in 30 days, not only has she made great butter records but wonderful milk records as well. She carries 4 crosses of the blood that produced the former world's champion 2 year old, Alta Posch, and carries the same blood lines that have produced many of the greatest animals, including Zarilda Clothilde 3d De Kol, the second 33,000 lb. cow, May Echo Sylvia, the world's champion milk producer, and the famous young sire, OrmsbyKorndyke Lad, who is siring world's champions.

SIR ROLO BANKS MERCENA 14953C

SIRE
 2 R. O. M. daughters.
 Rolo Mercena De Kol..... 51.93
 Milk 738.90
 Butter, 30 days..... 201.17
 Milk 2,930.60
 (World's butter records)
 Butter, 60 days..... 342.51
 Milk 5,689.70
 Lady Grace Rolo..... 2½y 26.22
 Milk 363.00
 From a sister and his sire's sire is by a full brother and from a sister to Alta Posch..... 2½y 27.08
 (World's record when made)
 His sire's sire carries 50% of the blood of Alta Posch's Son.
 Whose granddaughters include Zarilda Clothilde 3d De Kol
 Butter, 365 days..... 1,155.00
 Milk 33,145.00
 Butter, 365 days..... 7 days 1,070.23
 Milk 30,427.00
 (Strictly official records)

FLORA DE KOL PIETERTJE 9163C

DAM
 6 R. O. M. daughters.
 Rolo Mercena De Kol..... 51.93
 Milk 738.90
 Butter, 30 days..... 201.17
 (World's butter records)
 Colantha Pietertje Banks..... 3½y 28.57
 Flora De Kol Pietertje 3d..... 26.07
 Milk 546.30
 Canary Flora De Kol..... 21.46
 Milk 545.90
 Flora De Kol Pietertje 3d..... 20.45
 Her sire's sire is by a son of De Kol 2d's Butter Boy,
 Who is a son of De Kol 2d..... 26.57
 (World's record when made)
 Whose granddaughters include Aagie Cornucopia Pauline..... 4½y 34.32
 (World's record for 3 years)
 4 others from 30 to 33.86 lbs.

SIR SCHULING MERCENA B. 7860C

G. SIRE
 1 R. O. M. daughter.
 Aagie Mercena Schulling..... 20.44
 Milk 466.20
 1 proven son
 Brother to R. O. P. year records.
 Niagara Maid..... 943.75
 Milk 20,815.00
 Bonheur Queen Mercena..... 4y 838.75
 Milk 17,587.00
 Bessie De Kol of Niagara..... 24m 578.57
 Niagara Maid..... 13,439.10
 Milk 570.45
 Cloverleaf Davorit Mercena..... 3y 14,281.50
 Milk

DAISY BANKS 6th 2712C

G. DAM
 Butter R. O. M..... 4½y 16.01
 Milk 409.30
 1 proven son
 Sister to Alta Posch A. R. O..... 2½y 27.06
 (World's record in class when made)
 Who is the dam of Alta's Posch's son,
 Whose granddaughters include Polly Posch..... 34.61
 Who is the dam of Ormsby Korndyke Lad,
 Sire of O. K. L. Pearl Tula, 365 days..... 1,366.75
 3 proven sons.

DAISY'S REDGE DE KOL 2739C

G. SIRE
 His sire is by a ¾ brother to Hengerveld De Kol and Pietertje Hengerveld's Count de K.
 Whose daughters include Princess Hengerveld De Kol..... 33.62
 Blanche Lyons De Kol..... 33.31
 12 others above 30 lbs.
 And who are grand sires of Segis Hengerveld Payne Johanna..... 47.35
 Sunrise Hengerveld Caroline..... 41.07
 72 others from 30 to 40.05 lbs.

FLORA PIETERTJE 2d 3574C

G. DAM
 2 R. O. M. daughters.
 Flora Pietertje Pauline..... 4y 17.77
 Milk 359.00
 Flora Pietertje 4th..... 2½y 13.70
 Milk 340.60
 Grand dam of Rolo Mercena De Kol..... 51.93
 Butter, 30 days..... 201.17
 (World's butter records)

COUNT MERCENA POSCH 3002C

G. G. SIRE
 31 R. O. M. daughters.
 Paforit Mercena Belle..... 28.77
 Mercena Artalissa..... 27.21
 Niagara Maid..... 26.00
 4 others above 20 lbs.
 21 proven sons.

BELLDINA SCHULING 3103C

G. G. DAM
 Butter R. O. M..... 20.21
 Milk 473.40
 2 R. O. M. daughters.
 Annie May Schulling..... 2½y 17.17
 2 proven sons.

ABBEKERK PRINCE 2d 1008C

G. G. SIRE
 4 R. O. M. daughters.
 Mercena 3d..... 27.63
 Butter, 30 days..... 113.33
 Alta Posch..... 2½y 27.06
 (World's record when made)
 3 proven sons.

DAISY BANKS 1749C

G. G. DAM
 1 R. O. M. daughter.
 Daisy Banks 6th..... 4½y 16.01
 Milk 409.30
 Her sire and dam both imported from Friesland.

WINNIE R'S DE KOL 2351C

G. G. SIRE
 7 R. O. M. daughters.
 Calamity Jane 3d..... 27.06
 Butter, 30 days..... 113.17
 Buckeye Maid 3d..... 21.62
 Milk 598.00
 2 proven sons.

DAISY BELL OF KENT 3105C

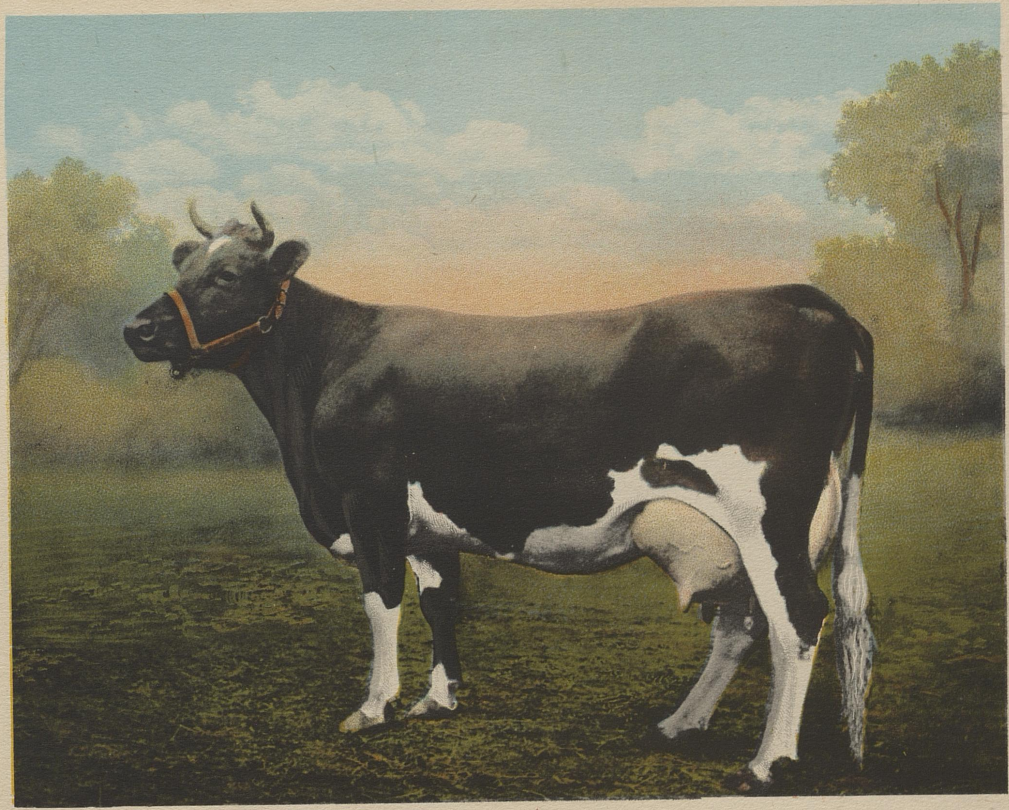
G. G. DAM
 Dam of Daisy Belle Posch..... 23.28
 Milk 561.20
 Butter, 365 days..... 546.25
 Milk 13,846.00

NED 1844C

G. G. SIRE
 2 R. O. M. granddaughters.
 Son of Wild Bill 1548C and Lilly Westwoud 768C.

FLORA PIETERTJE 2779C

G. G. DAM
 Her dam is by a brother to Netherland Hengerveld..... 26.67
 Milk 544.90
 (World's butter record for 4 years)

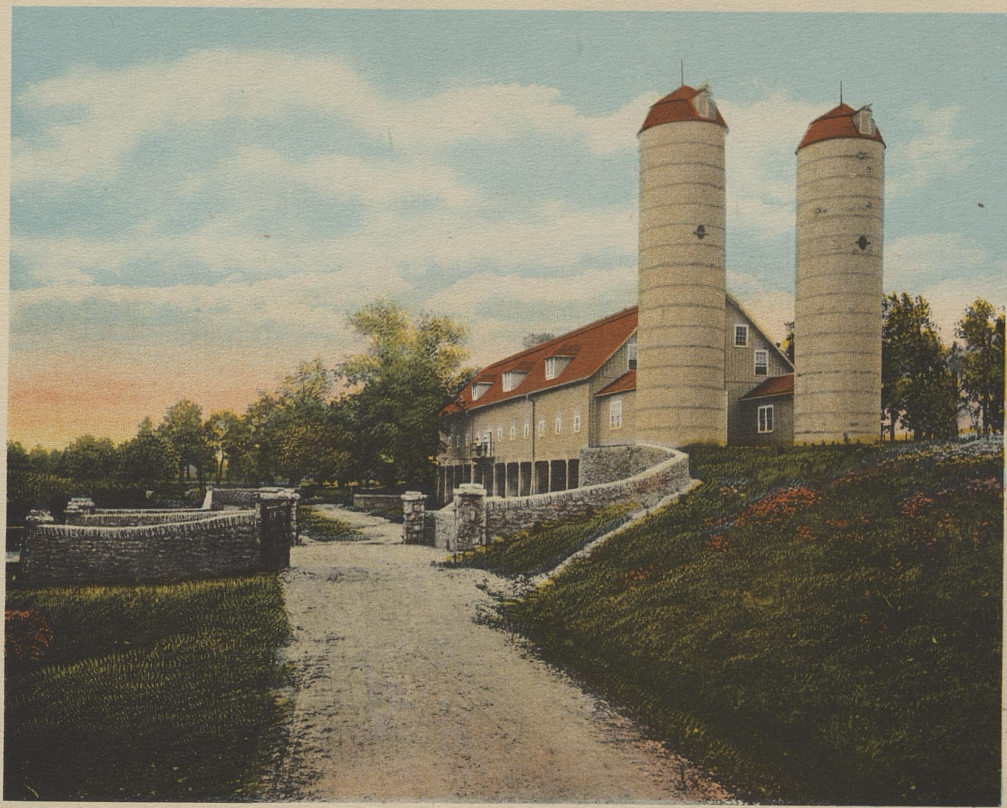


ROLO MERCENA DE KOL.

NURSERY AND DEVELOPING BARN.

GREAT is the Creator and we are taught that Man is made in his image. One cannot help gazing in amazement at the mammoth structure built of material taken from its very foundation, affording rock for the building and the artistic walls shown in the picture. Even a mighty spring gushes forth and is harnessed in cement with tile pipes leading the entire length of the barn, depositing at intervals the sparkling water in cement drinking fountains for the young Holstein heifers which are reared to useful age before they go forth to feed the nation. God grant that we might have more outlets like this developing healthy vigorous food producers.

All the work is done from the second floor. The open basement is sufficient shelter for growing heifers. The adjustable automatic feeding racks will accommodate 300 head and the ever running water slightly changes in temperature the year round. The two monster silos towering 72 feet high will serve as a monument to the builder for ages to come.



NURSERY AND DEVELOPING BARN, COLDSTREAM FARM.

BABES IN THE BLUE GRASS.

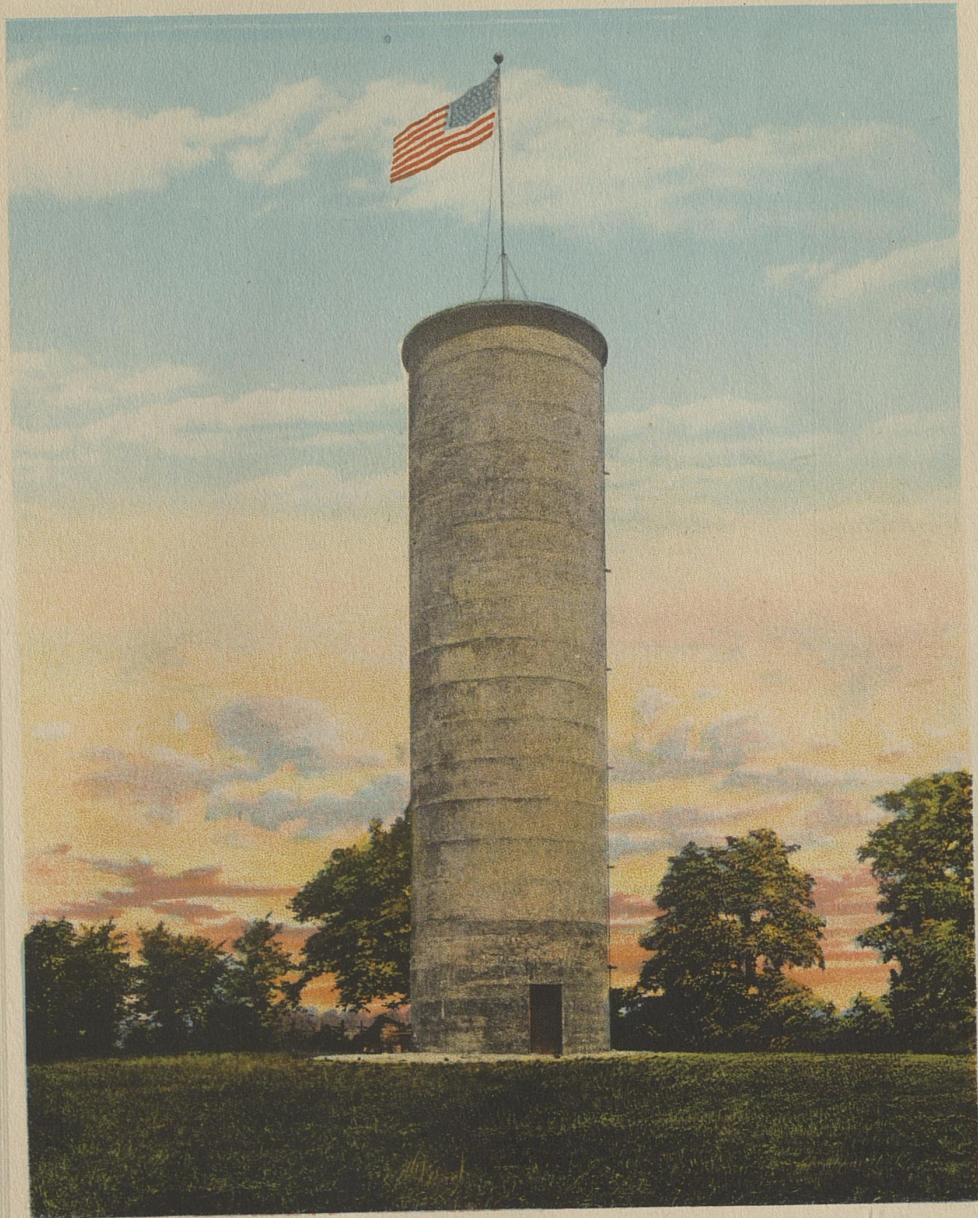
COLDSTREAM FARM was selected for its great purpose because of its superior natural resources. Nine-tenths of the ingredients of bone is phosphate of lime which is found richly in the soil of Coldstream Farm. From such soil must come pure water and herbage that will produce stamina. The climate permits of more outdoor comfort than most localities thus avoiding such diseases as are contracted by close housing. Note the youngsters grazing, growing in luxuries knee-deep.



BABIES IN THE BLUE GRASS, COLDSTREAM FARM.

WATER TOWER.

MANY wonder at the mammoth water tower, boldly towering 90 feet from the highest elevation of the farm, overlooking miles and miles of Old Kentucky. From the top of this tower one commands the view of several towns, villages and cities, Lexington included. It is built of reinforced concrete and has a capacity of 90,000 gallons. From the pumping station more than a mile away, water is electrically pumped into this immense tower from where all buildings and paddocks are supplied with its pure cold water.



WATER TOWER, 90,000 GALS., COLDSTREAM FARM.

A QUIET EVENING ON COLDSTREAM.

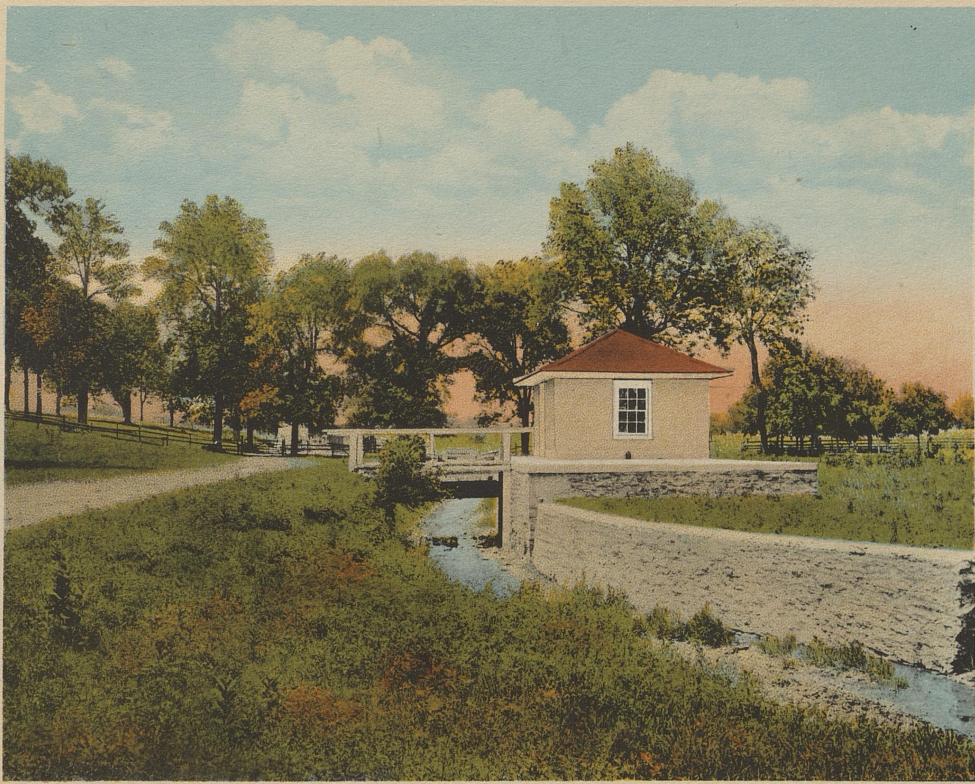
AFTER a busy morning grazing in the Blue Grass, the great black and white matrons retire leisurely to some pretty knoll where they rest in the shadows of the sturdy maples while the balmy breezes whisper in the variegated foliage, and the mocking bird peals forth sweet strains of cheery music broken only by the hum of the tourists' autos as they are escorted through the many places of interest.



QUIET EVENING, COLDSTREAM FARM.

PUMPING STATION.

THE cement structure encloses a wide fame-gushing, never-failing spring which supplies the entire farm. The writer was told that in former days when the country was visited by a drouth it was not unusual to see long lines of teams that came from miles with tanks awaiting turn to load up with water for their stock at home. All day long and well into the night the teams of tanks and barrels would come and go, apparently untaxing this gushing nature's fountain. This, however, is only one of several similar springs.



PUMPING STATION, COLDSTREAM FARM.

DEVELOPING BY NATURE.

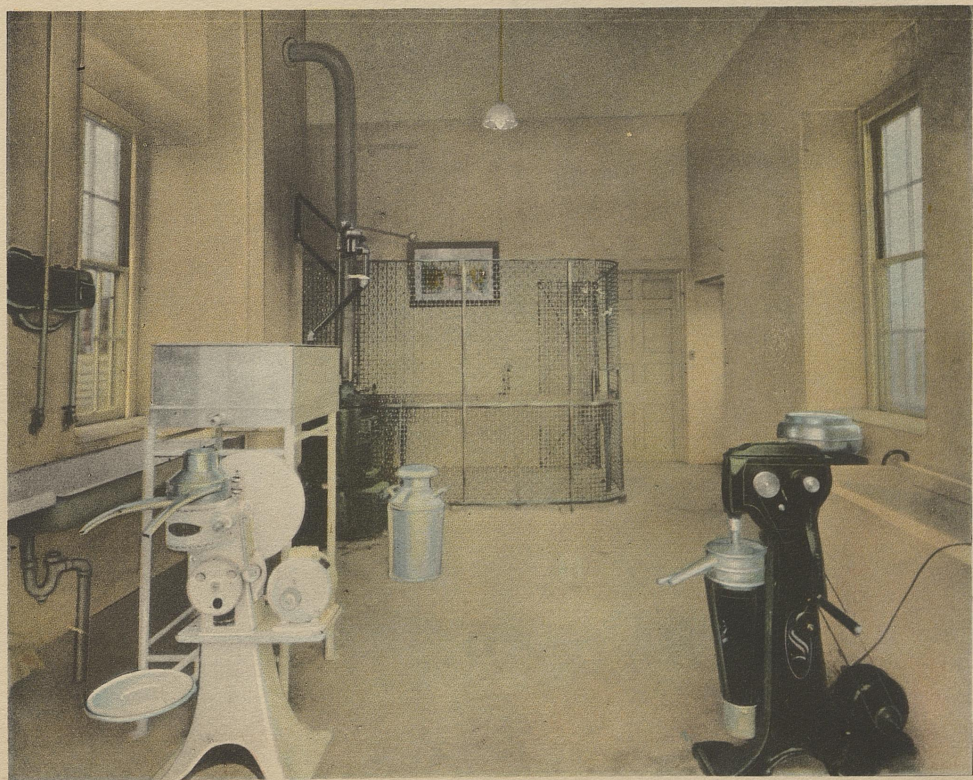
NOW how can you conceive of farm life more ideal? Here the babes wallow in Blue Grass to their knees. How they grow. It is an undisputed fact that these animals develop faster and larger in the Blue Grass than in any other spot on the globe. The demand for these young females is greater than the production, because of bone, vigor, scale, health, stamina and resistance. Due chiefly to ever access to pure water and blue grass.



DEVELOPING BY NATURE ON COLDSTREAM FARM.

INTERIOR OF DAIRY AND RECORD ROOM.

THIS room is equipped with all the necessary machinery for handling the dairy products, testing and keeping official records. Every cow has an individual accounting and boarders are prohibited. It might be interesting to our friends to know that this great herd contains a world's champion two-year-old, a world's champion three-year-old, a Canadian champion and the World's Champion aged cows of all breeds, as well as the highest record bull in the world, whose daily records may be found in this record room.



INTERIOR, DAIRY & RECORD ROOM, COLDSTREAM FARM.

DRINKING POOL.

ASIDE from the numerous Coldstreams, huge cement tanks are practically located throughout the entire farm for the convenience of these great Holsteins. Also salt licks are kept constantly replenished with salt and salt rock. The accompanying picture shows Fairmont Aaggie Topsy, 36.02 pounds butter in seven days, in her new Coldstream Kentucky home, with five heifers representing the very choicest blood lines of the great Holstein breed.



ONE OF THE MANY DRINKING FOUNTAINS ON COLDSTREAM FARM.

Taxpayers Model, The Greatest Duroc Boar in the World

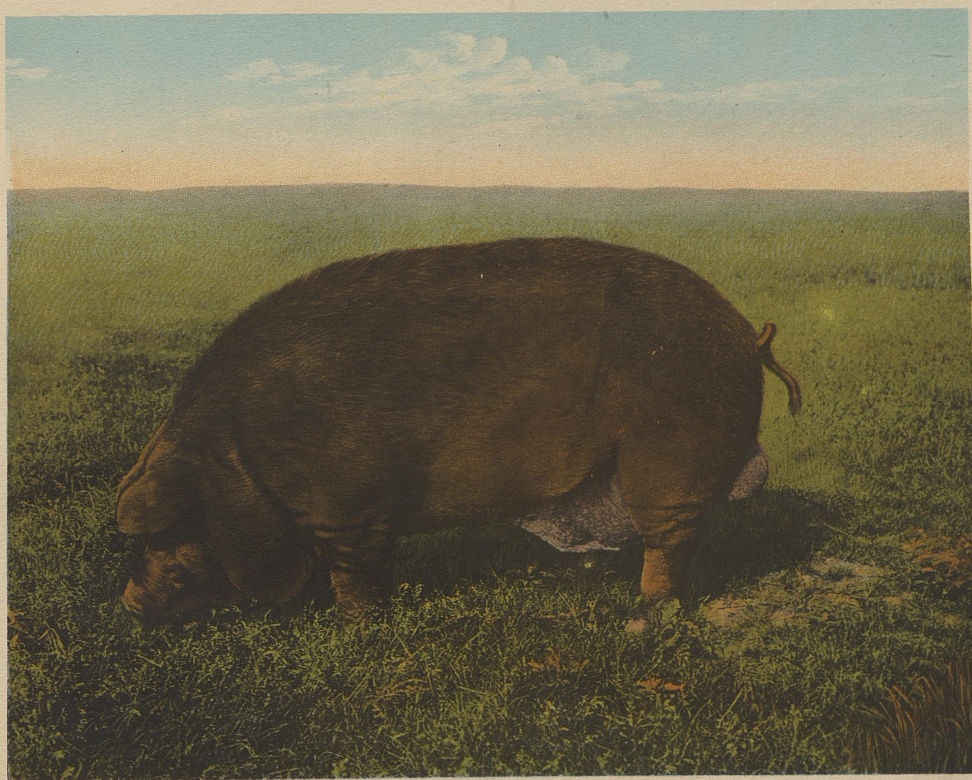
When you stop and consider that he has shown AND WON in nearly all the Central States from Louisiana to Canada, has been a grand champion boar every year of his life has been fitted five times and in his five year old form goes out with the cherry bloom of a two year old and wins for himself many blue and purple ribbon together with the admiration of the very best Duroc breeders and judges in America, thus proving by merit his superior individuality

Each year since he was a yearling he has led a herd of his sons and daughters into the show circle which has carried away the blue and purple ribbons, winning much favorable comment at the ring side, thus substantially fixing great popularity for their worthy sire.

No boar of any breed, except Taxpayers Model, has ever been known to come back year after year with the bloom of youth, his eyes bright and alert, his form erect and without a wrinkle. Taking into consideration all of the above facts, I feel justified in my assertion that

TAXPAYERS MODEL IS THE GREATEST DUROC BOAR IN THE WORLD

Lack of space prevents us from showing a picture of the monster running mate, Walts Great Top Col, which was recently purchased of R. C. Bush of Gallatin, Tennessee, for the meager sum of \$10,000. This young boar as a senior yearling stands 44 inches high, on a 10 inch bone and is 83 inches long from between his eyes over his back to the root of the tail, and weighed nearly 1000 pounds. Get your tape and rule and make a comparison. You will better appreciate the above facts.



TAXPAYERS MODEL.

NEWTON TURNPIKE.

THREE miles of this beautiful front with five entrances similar to the one shown constitutes the east side of this beautiful Kentucky home of champions. The artistic fence is built of gray limestone masonry, which borders the whole eastern front and encloses rich fields of Blue Grass, dotted with beautiful trees and shrubs, trailed with roads of madacam leading to restful picturesque spots and making easy access to the many rich fields as shown throughout this book.



NEWTOWN PIKE AND SECTION OF THREE MILE FRONT, COLDSTREAM FARM.

SWINE DEPARTMENT FARROWING BARN.

IN keeping with the great dairy the Swine Department is a thoroughly modern breeding plant, equipped throughout with all modern conveniences. Cleanliness prevails everywhere and these great Champion Durocs, polished and primed, are a wonderful sight to behold. The cross (x) in the picture indicates the World's Grand Champion, My Lady Friend, 261052, enjoying the high society of many other blue and purple ribbon winners at State and National Shows. This herd is headed by the great Taxpayers Model, elsewhere described, and by Walts Great Top Col, a senior yearling recently purchased for \$10,000 to be mated to the massive daughters of Taxpayers Model—with a view to improving the world's Duroc breed.



SWINE DEPT., FARROWING BARN, COLDSTREAM FARM.

QUIET SCENE ON COLDSTREAM FARM.

LIKE the famous Kentucky horse, the great black and white cow develops equally in the world-famous Blue Grass region. A chemical analysis of the soil on Coldstream Farm shows more phosphorus than is usually found in the average commercial fertilizer. The great spring water, the abundant shade, the balmy air, make the surroundings applicable to intensified stock raising. These beauty spots dotted with Holsteins must be seen to be appreciated. Surely there is a Supreme Being.



QUIET SCENE ON COLDSTREAM FARM.

WHEAT FIELD.

THIS immense wheat field is representative of the various crops grown on the farm, where diversified farming is practiced and which furnish employment for many. Twenty families are comfortably located in modern bungalows, representing the heads of different departments, besides scores of other employes are conveyed to and from the farm in motor vehicles regularly from the cities of Lexington and Georgetown.



HARVEST SCENE, 100 ACRES OF WHEAT, COLDSTREAM FARM.

THRESHING SCENE.

COLDSTREAM FARM has no regular threshing time any more. The grain is stored in the sheaf as soon as ready in great barricks and is threshed after the busy work in the great corn fields is done, thus avoiding the great rush when labor is scarce and wages are high. The farm has its own threshing machine and power and recognizes threshing as a rainy day job. The straw is better, the grain is better, and the practice is practical in many ways.



THRESHING SCENE, COLDSTREAM FARM.

In conclusion we wish to extend a hearty welcome to our friends to visit Coldstream, where we will gladly show you the farm in detail and endeavor to maintain Kentucky's reputation for hospitality.

Sincerely yours,

COLDSTREAM FARM,

H. H. TAYLOR By F. O. Bible, Gen. Supt.

Kindly address all business communications to the office of the General Superintendent, as above.

RBR

F

459

.L68

CB

19202

337648

