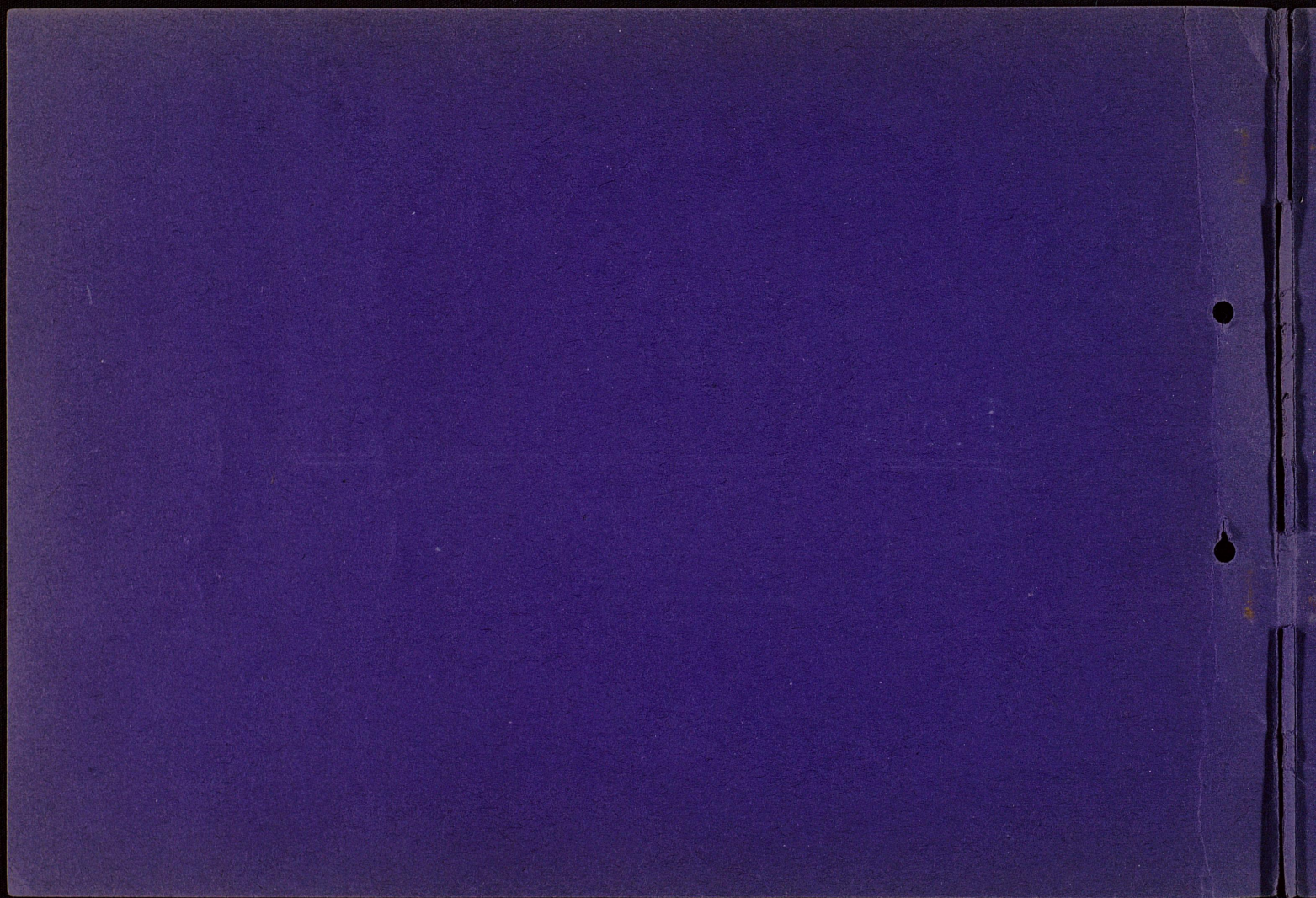




Some
Roads in the Blue Grass

Constructed by
HOME CONSTRUCTION CO.
LEXINGTON, KENTUCKY







JOHN M. BULLOCK, President

THOMAS SMITH, Superintendent

E. B. ELLIS, Secretary and Treasurer

HOME CONSTRUCTION Co.

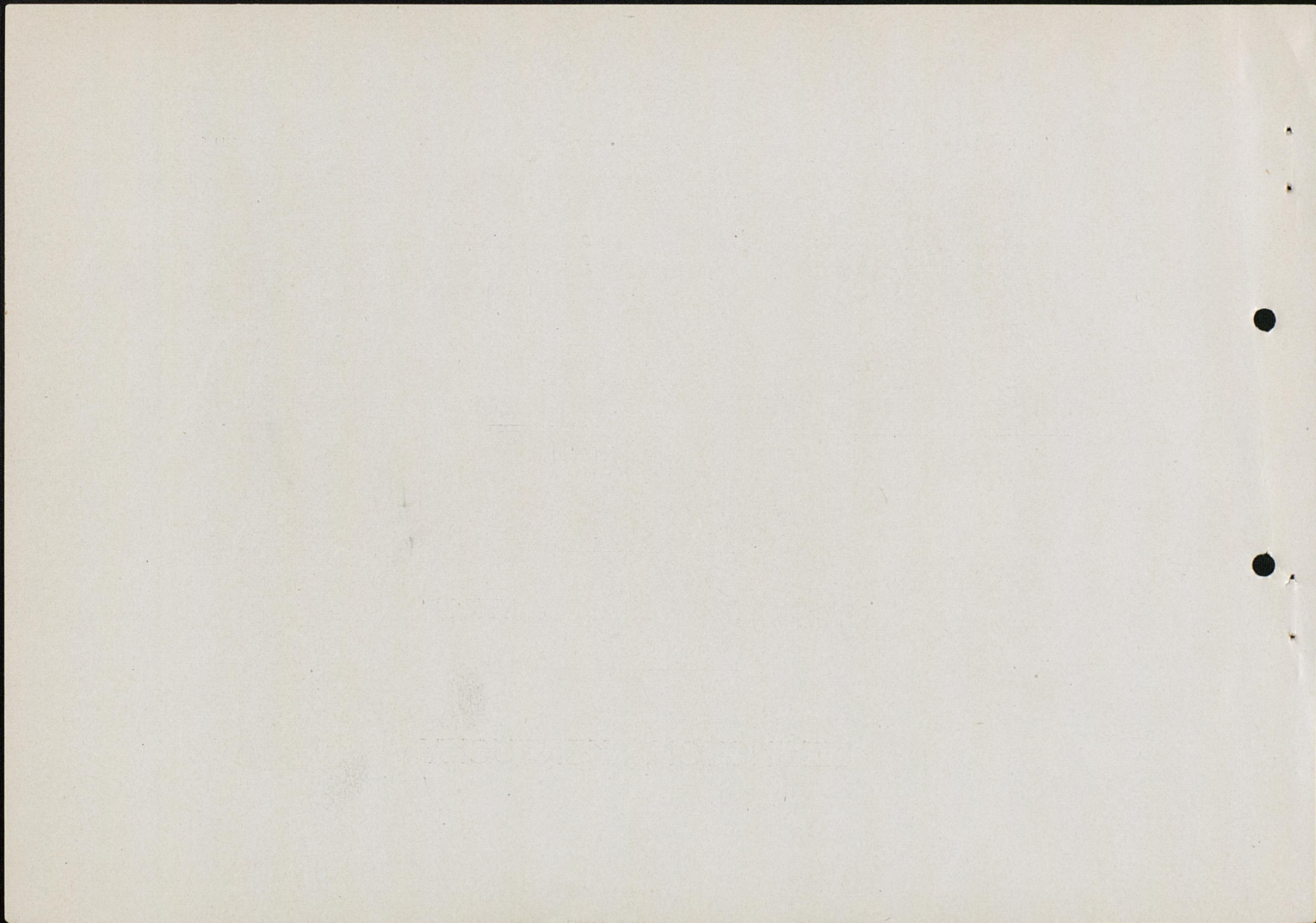
INCORPORATED

Street Paving, Macadam Roads and Oiled Roads

A SPECIALTY

ESTIMATES ON APPLICATION

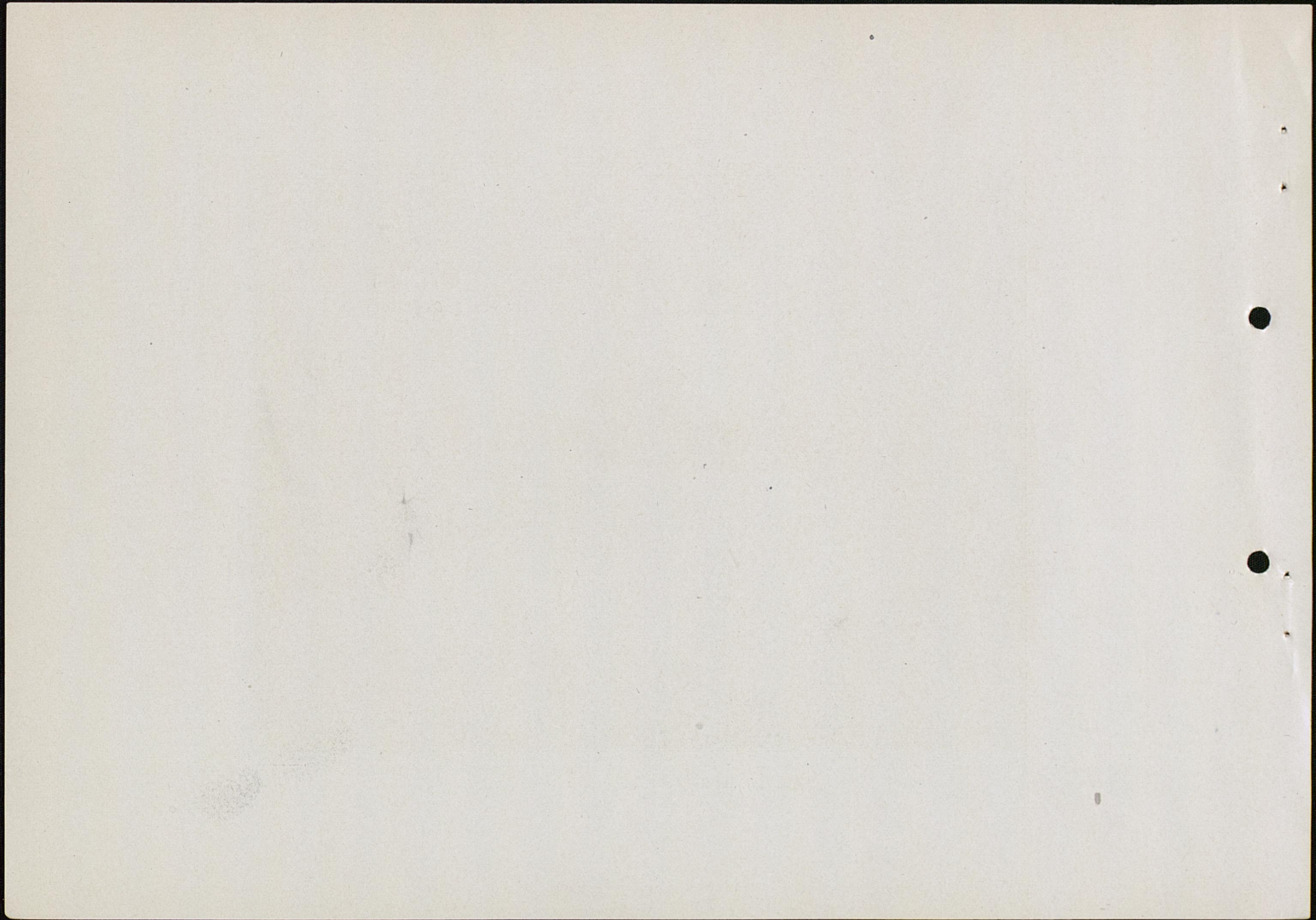
LEXINGTON, KENTUCKY

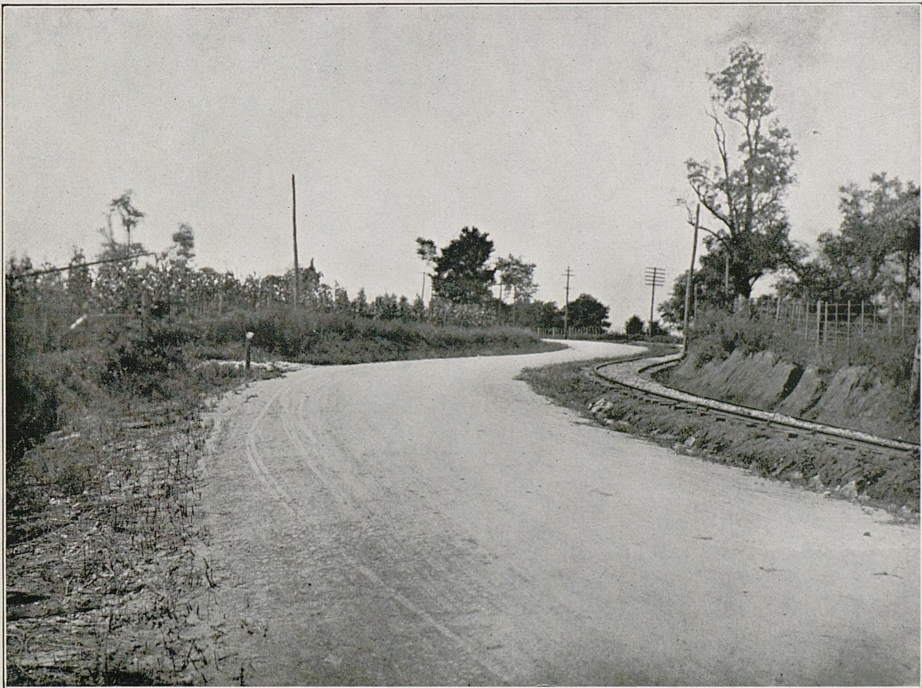


#Spec Coll. Dept Wilson

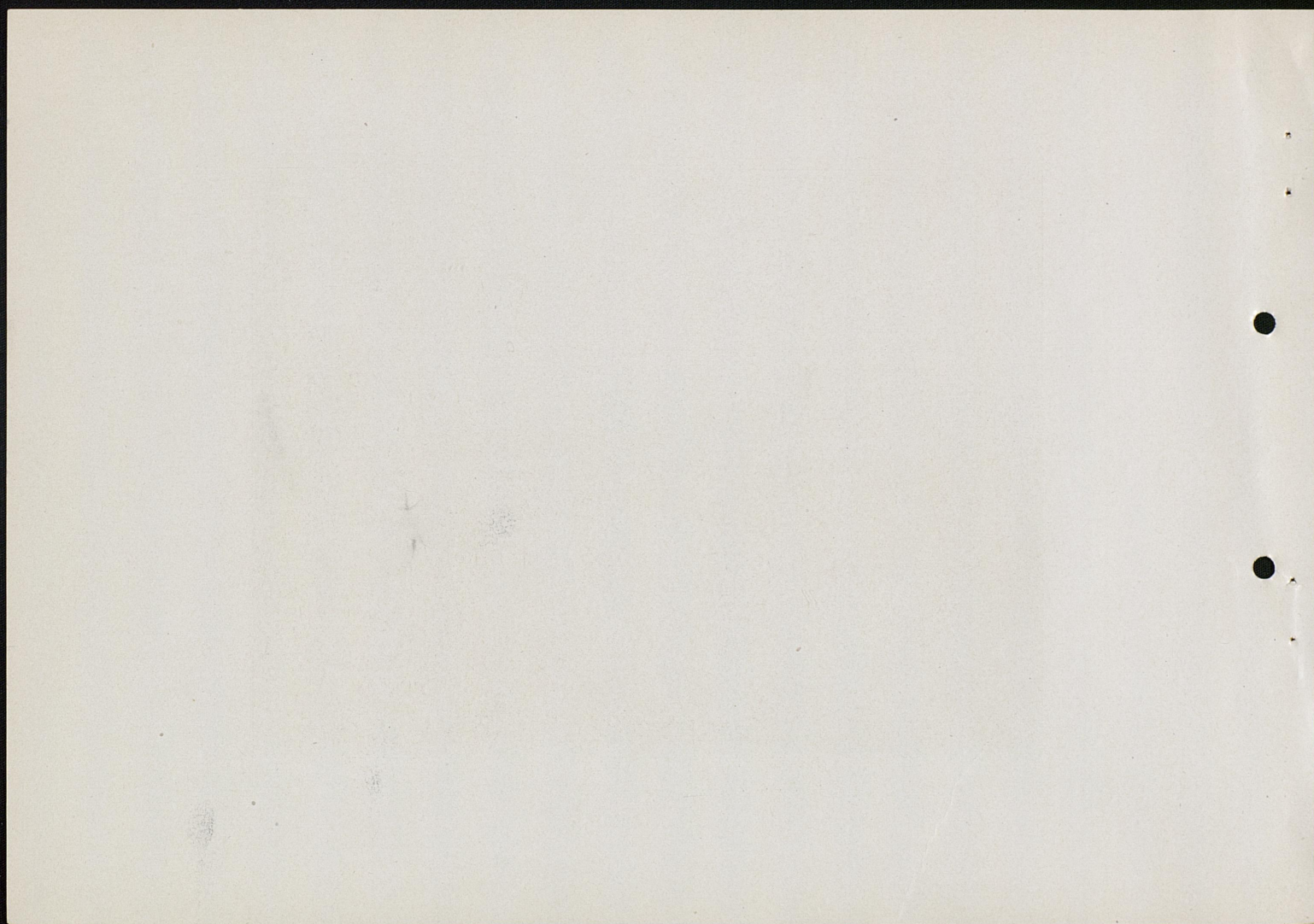


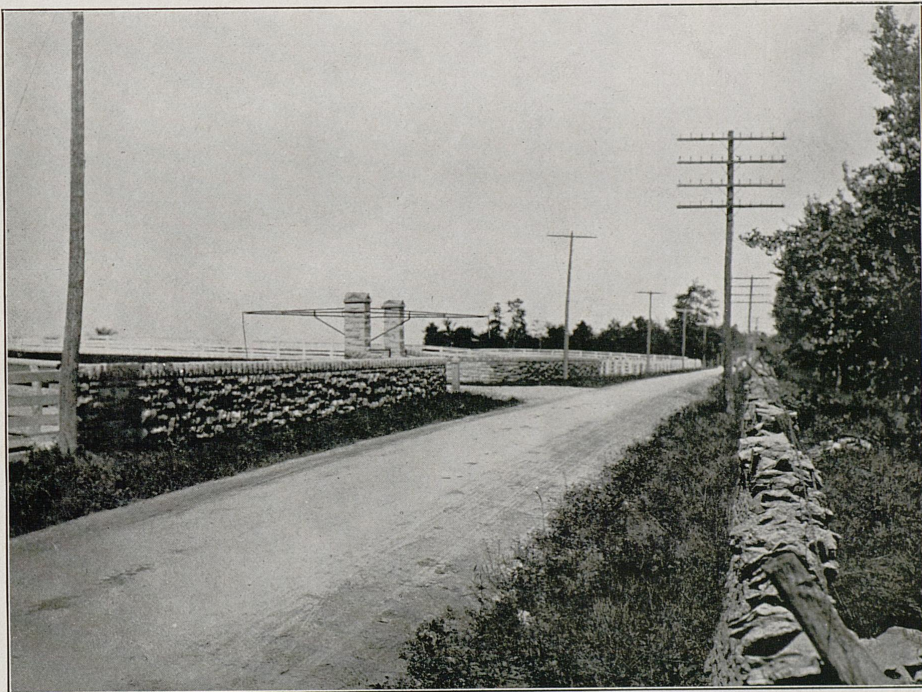
Georgetown Road five miles from Lexington.



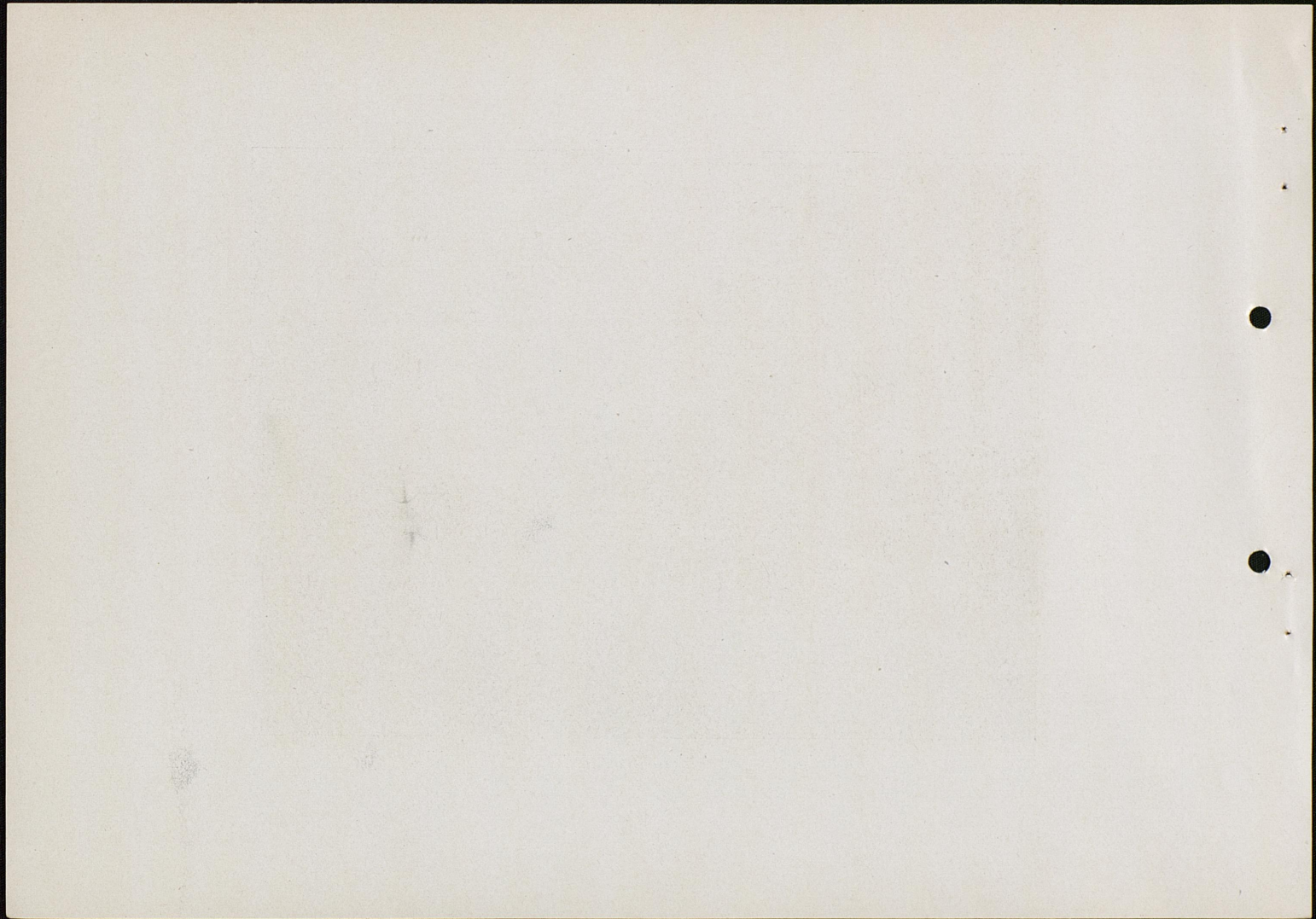


View of Maysville Road at Hamilton Place.



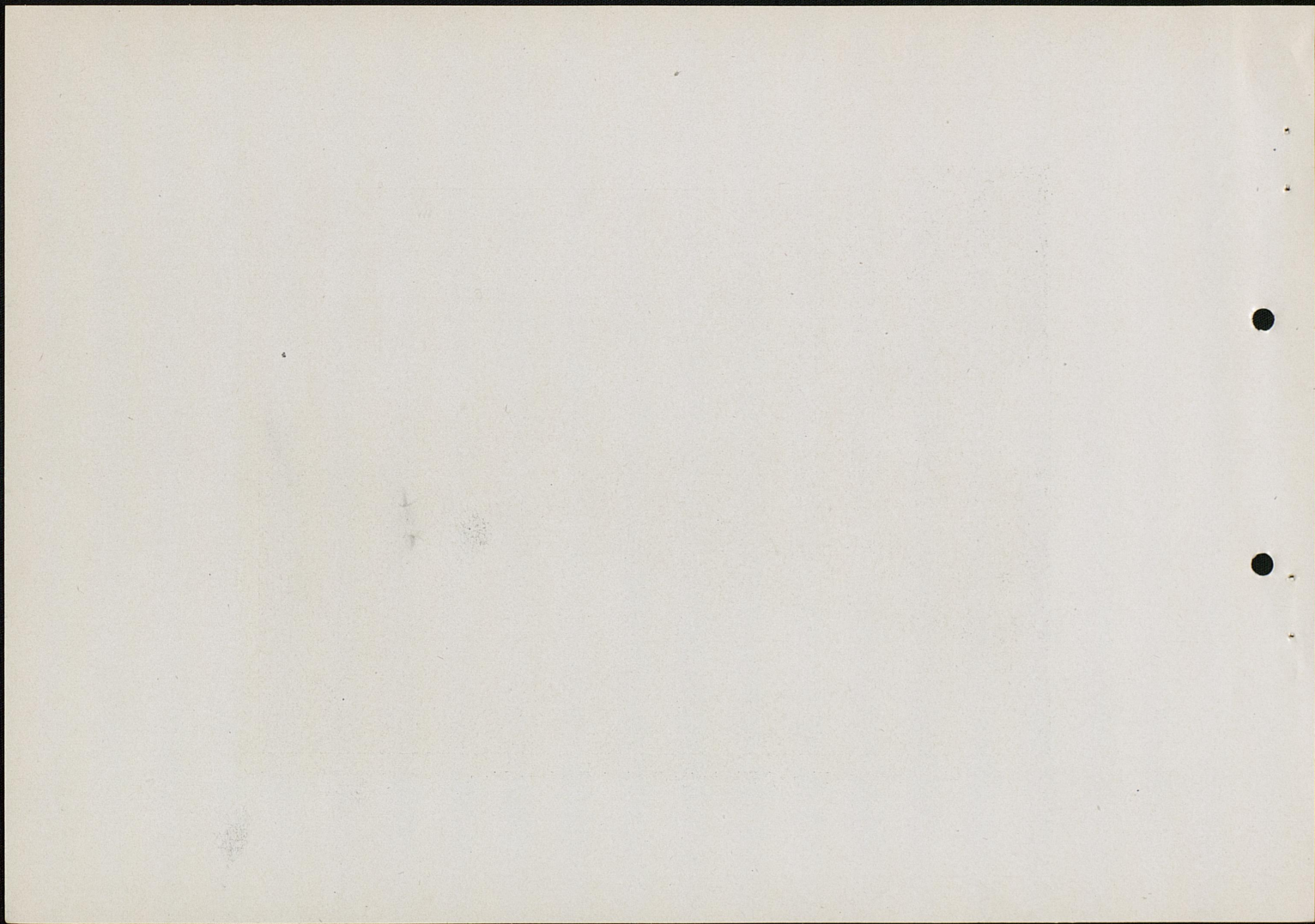


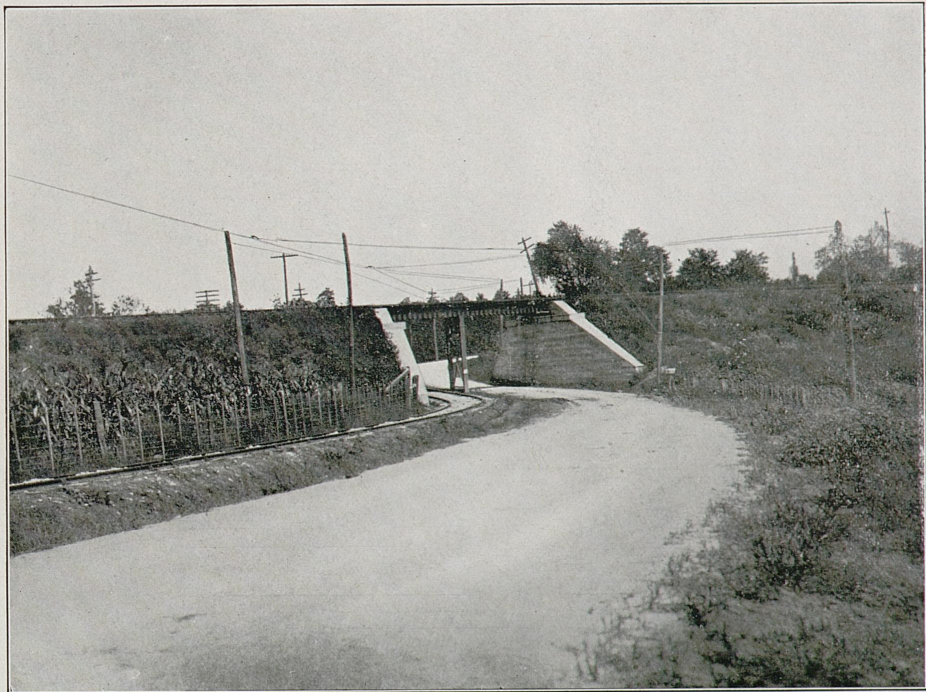
Russell Cave Road at Entrance to "Kingston Stud."



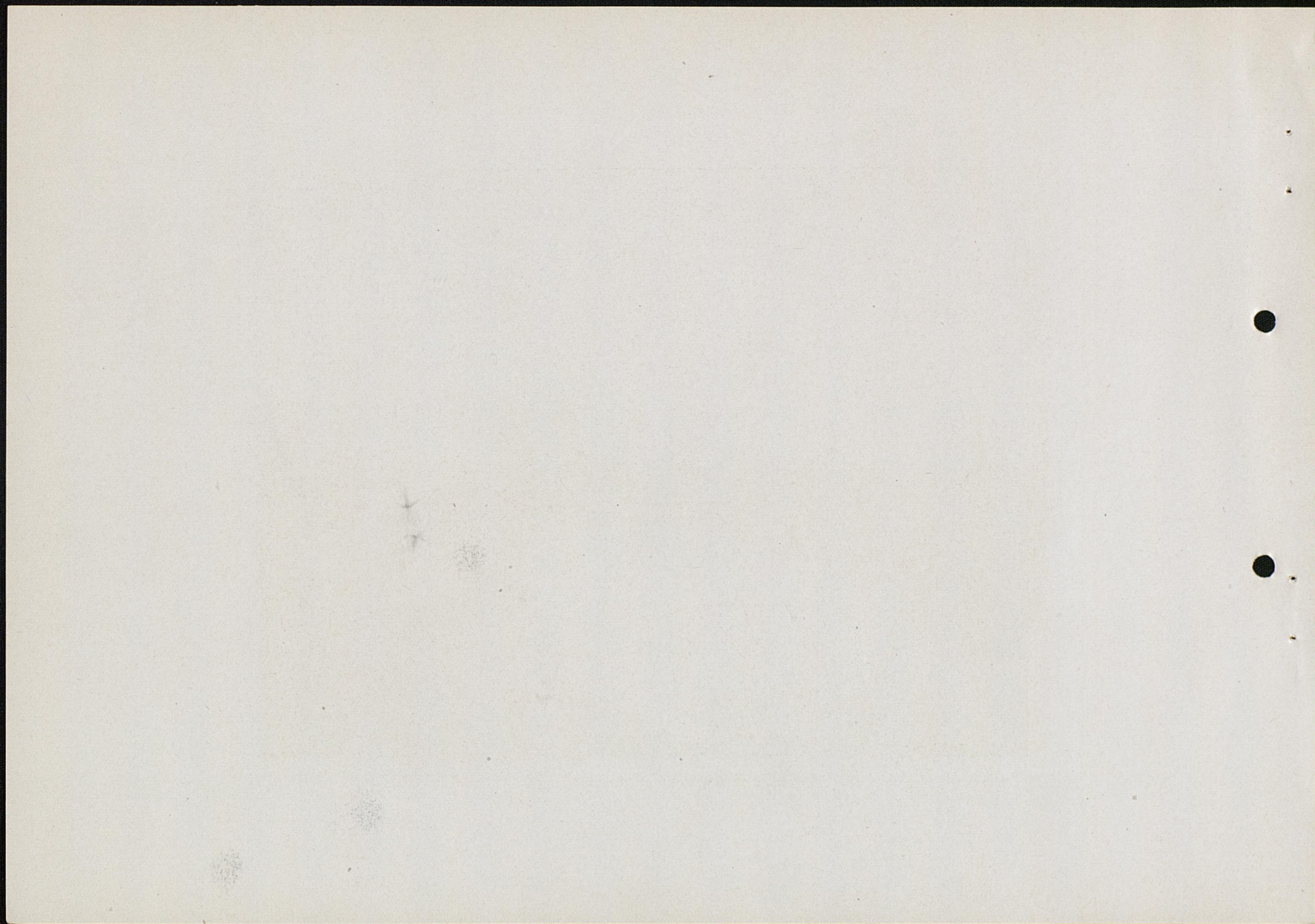


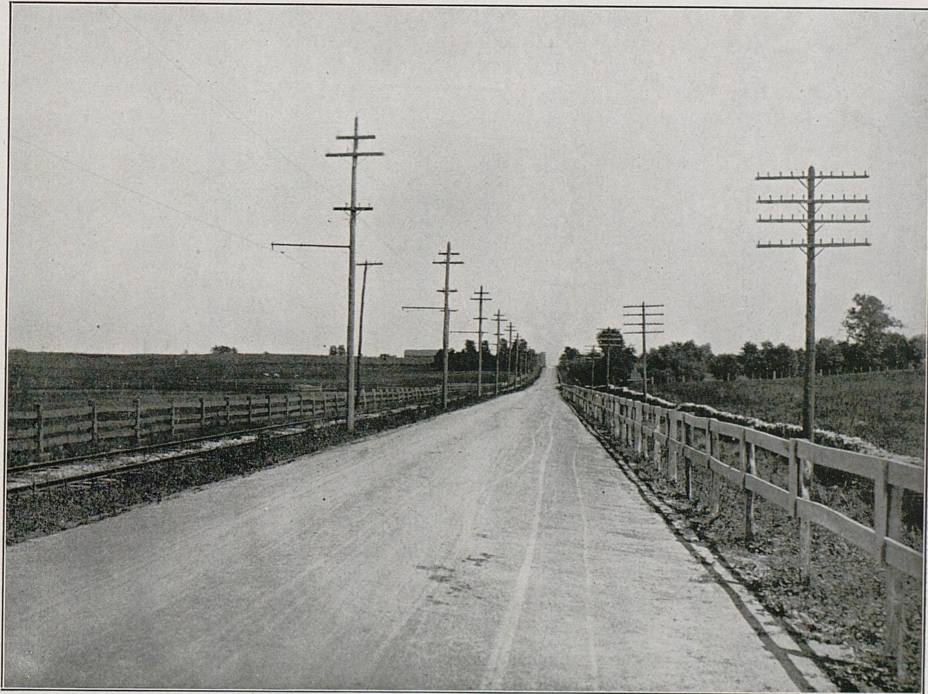
View of Winchester Road at Hamburg Place.



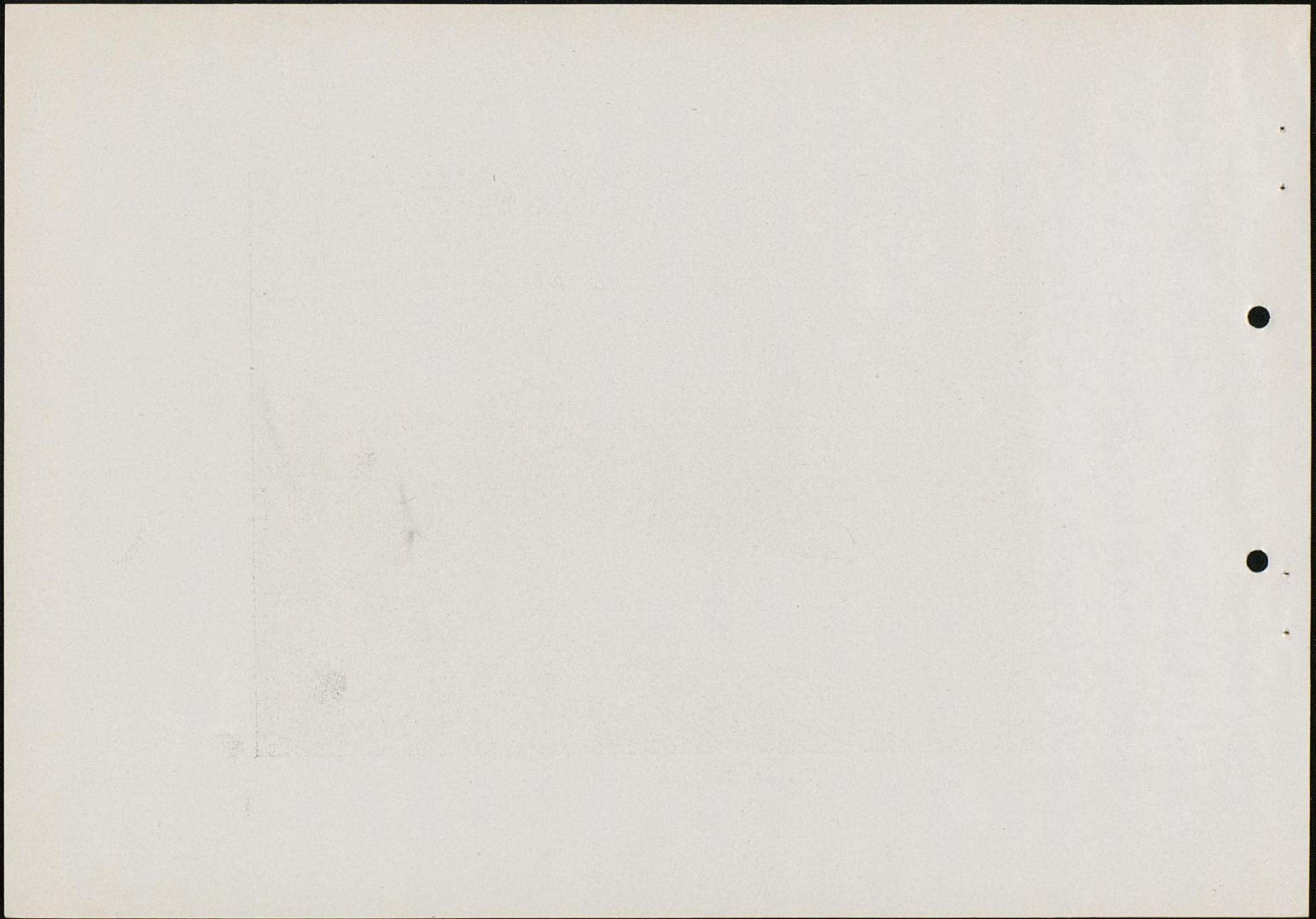


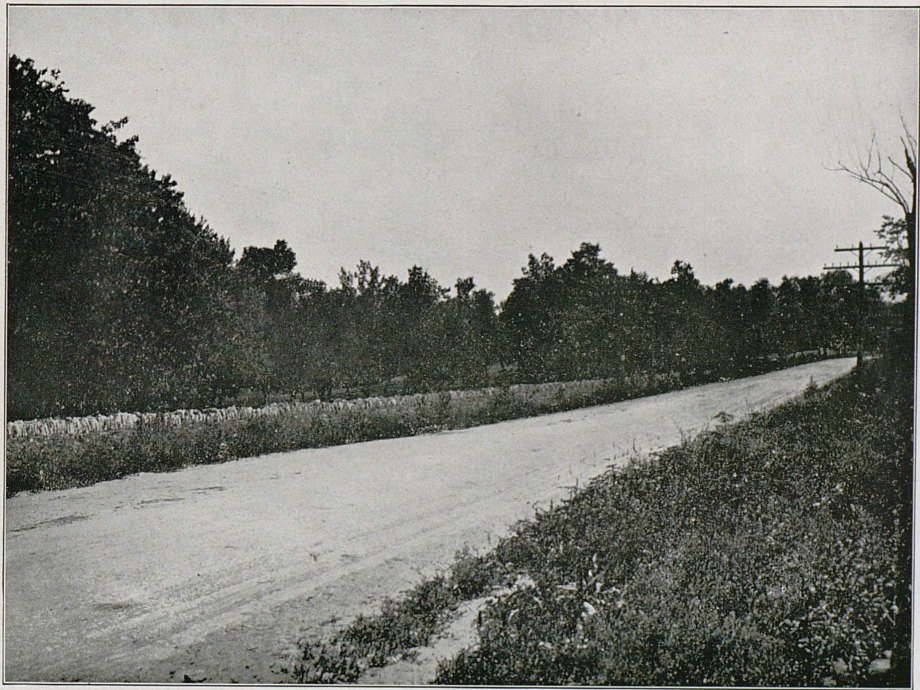
Maysville Road at L. & N. Bridge.



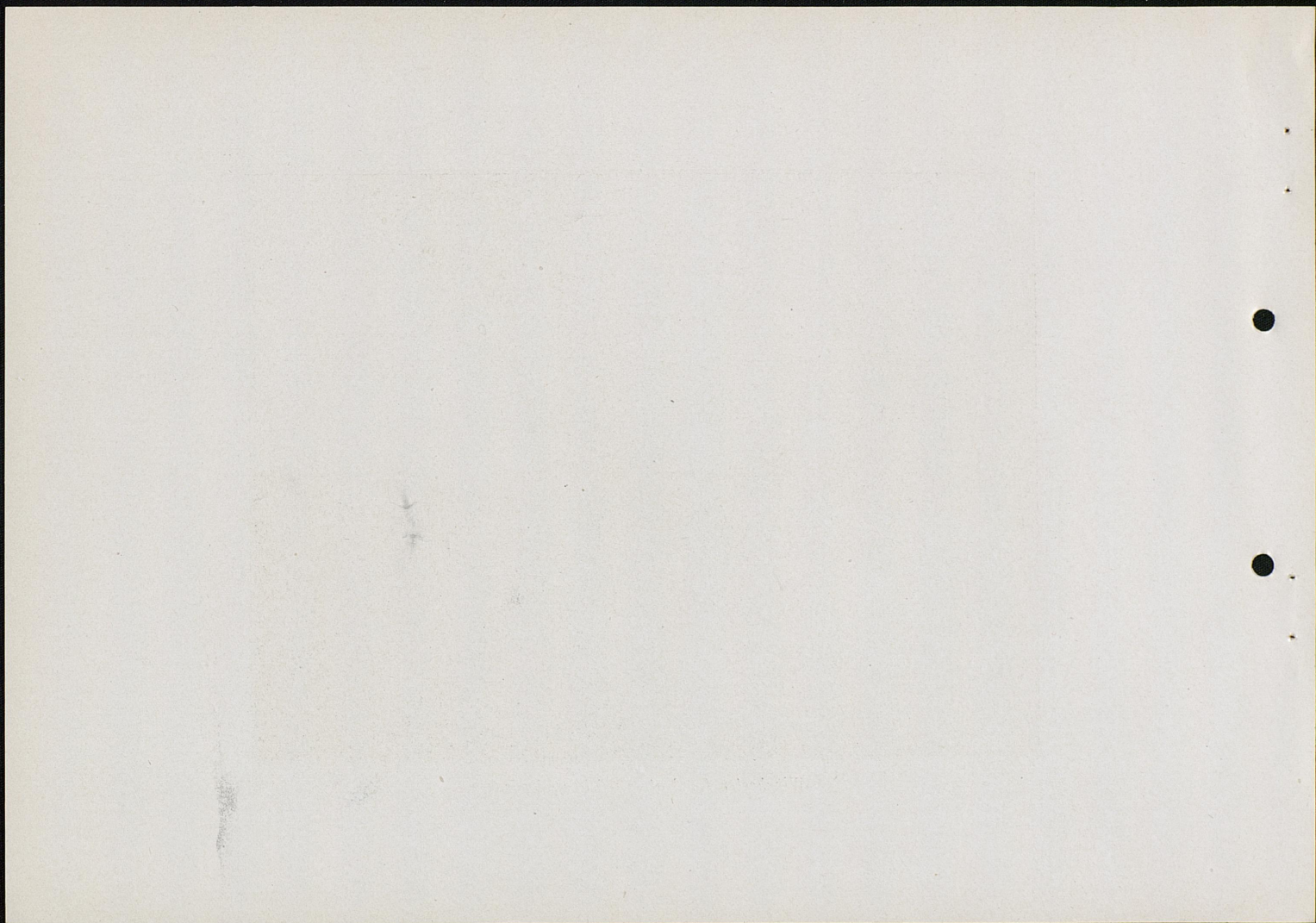


Maysville Road, four miles from Lexington.



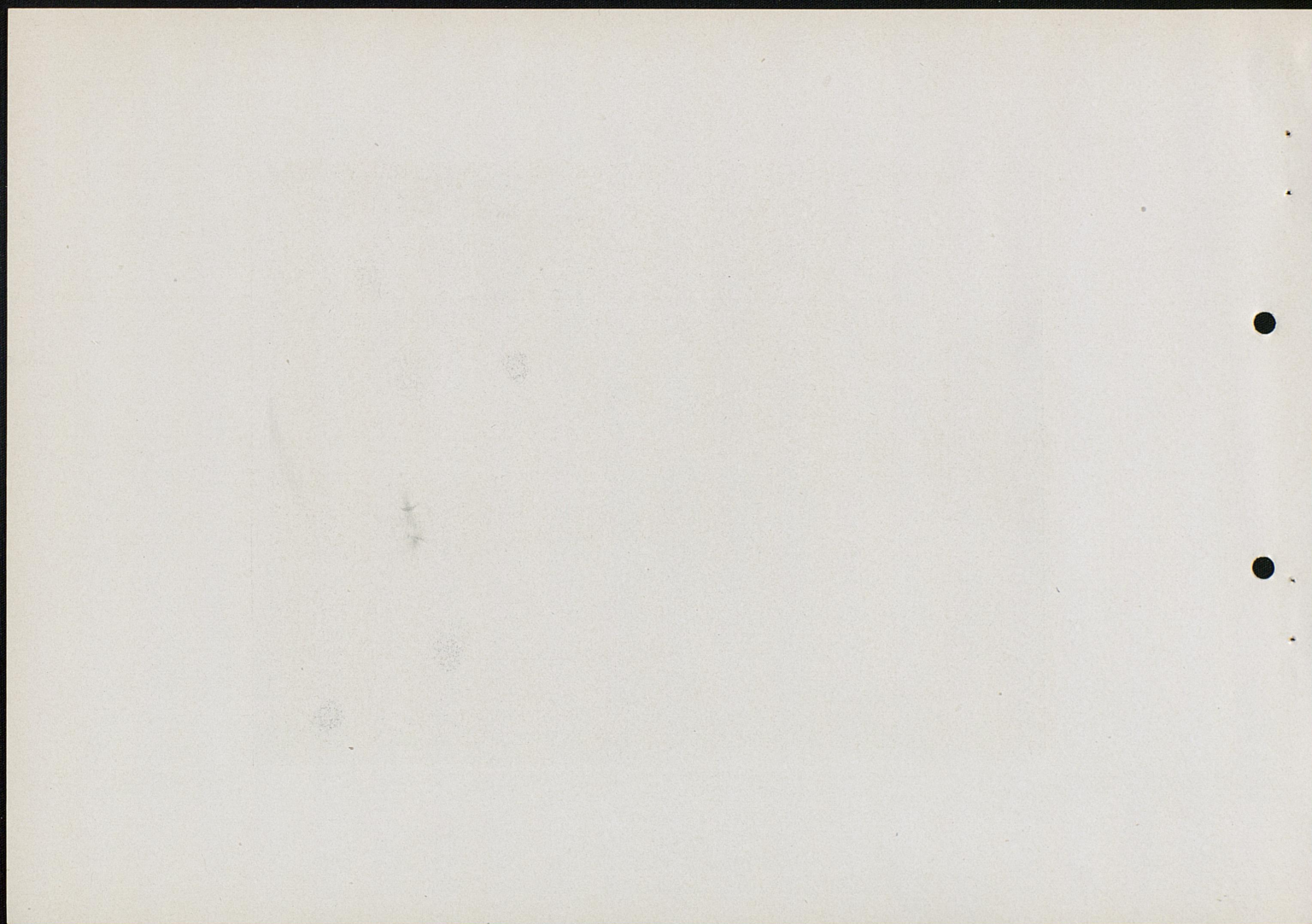


Winchester Road at Warfield's Woods.



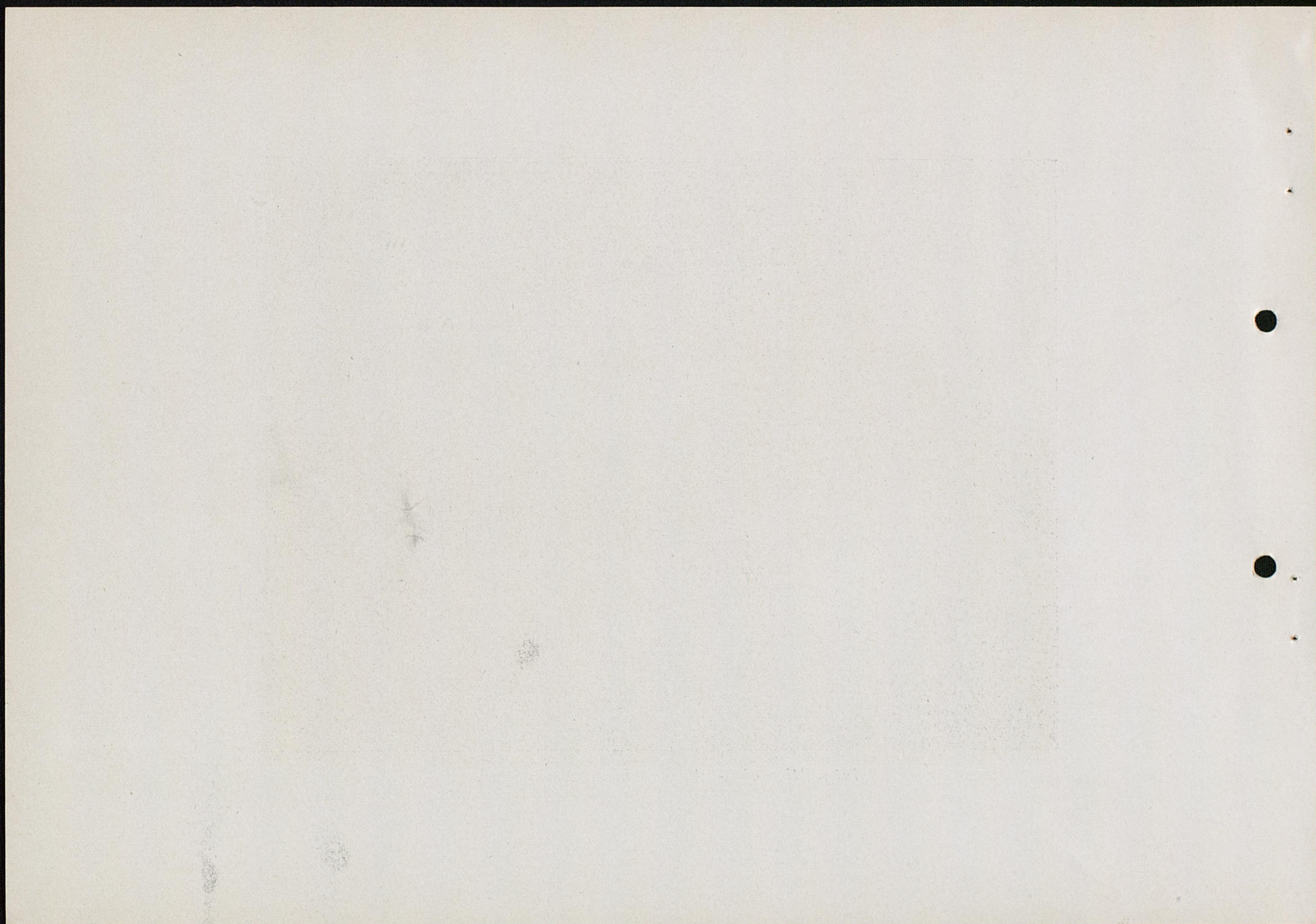


Georgetown Road, four miles from Lexington.



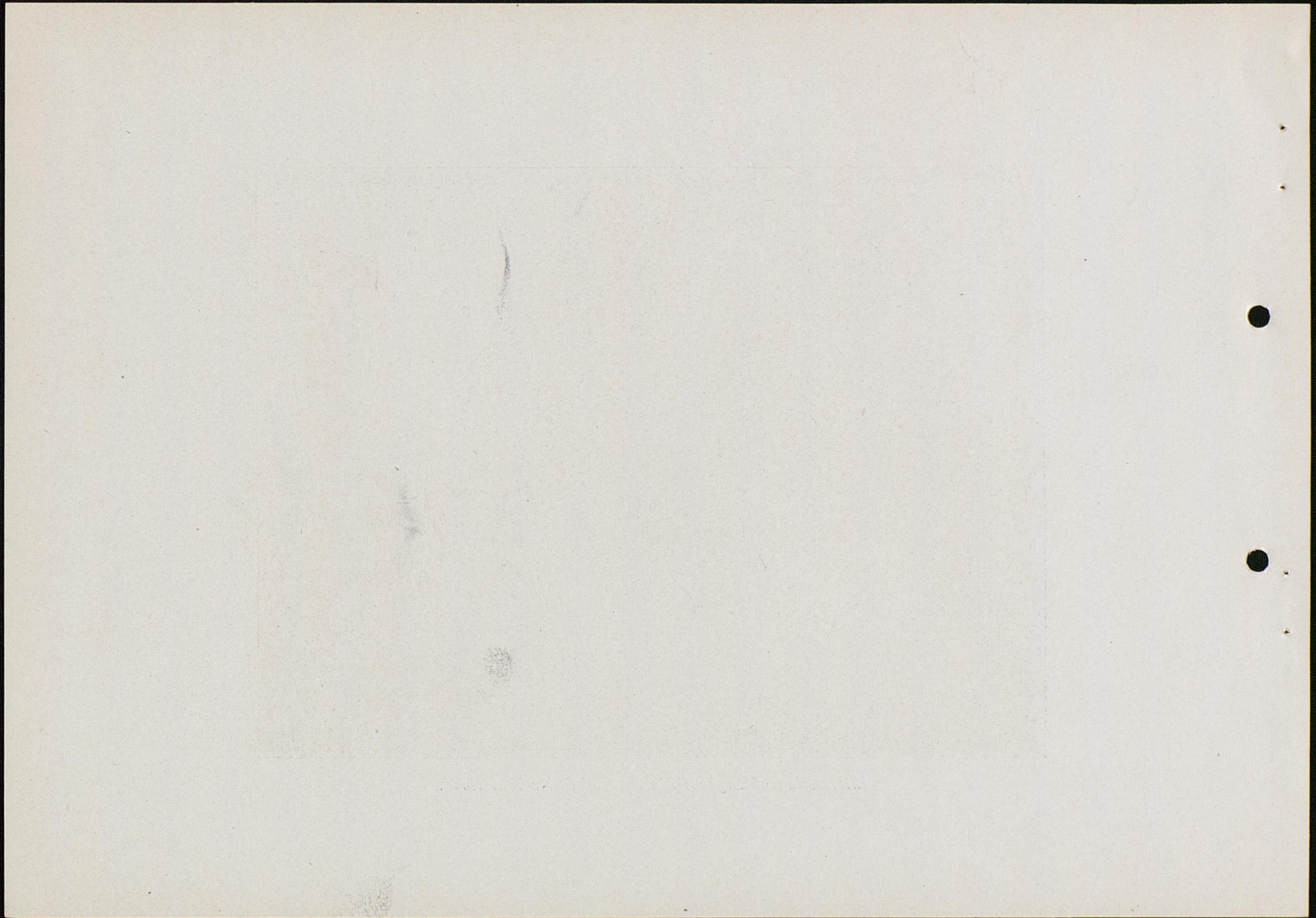


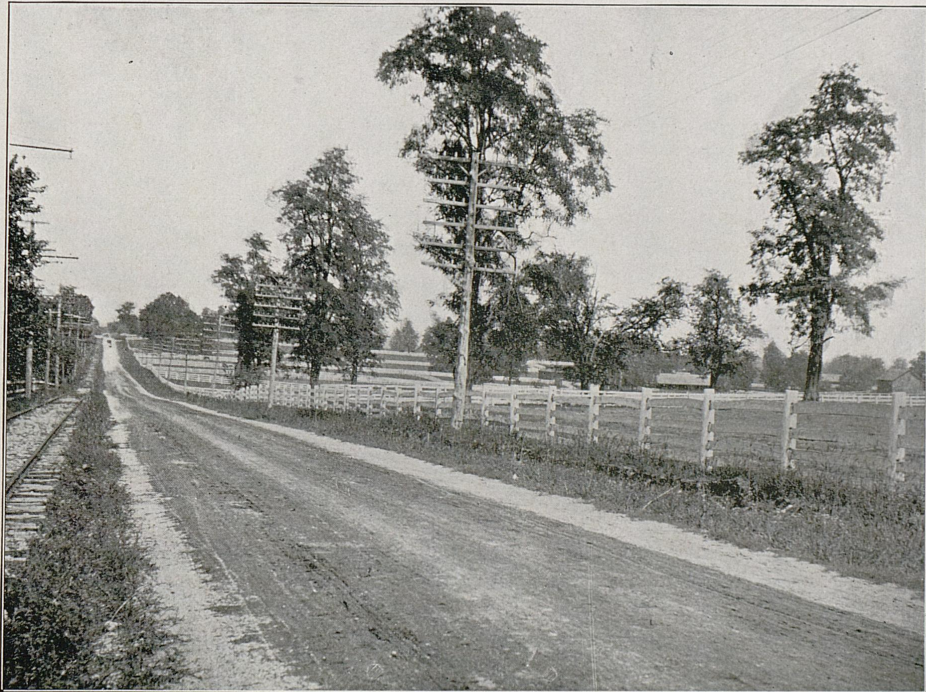
Intersection of Newtown and Iron Works Road.



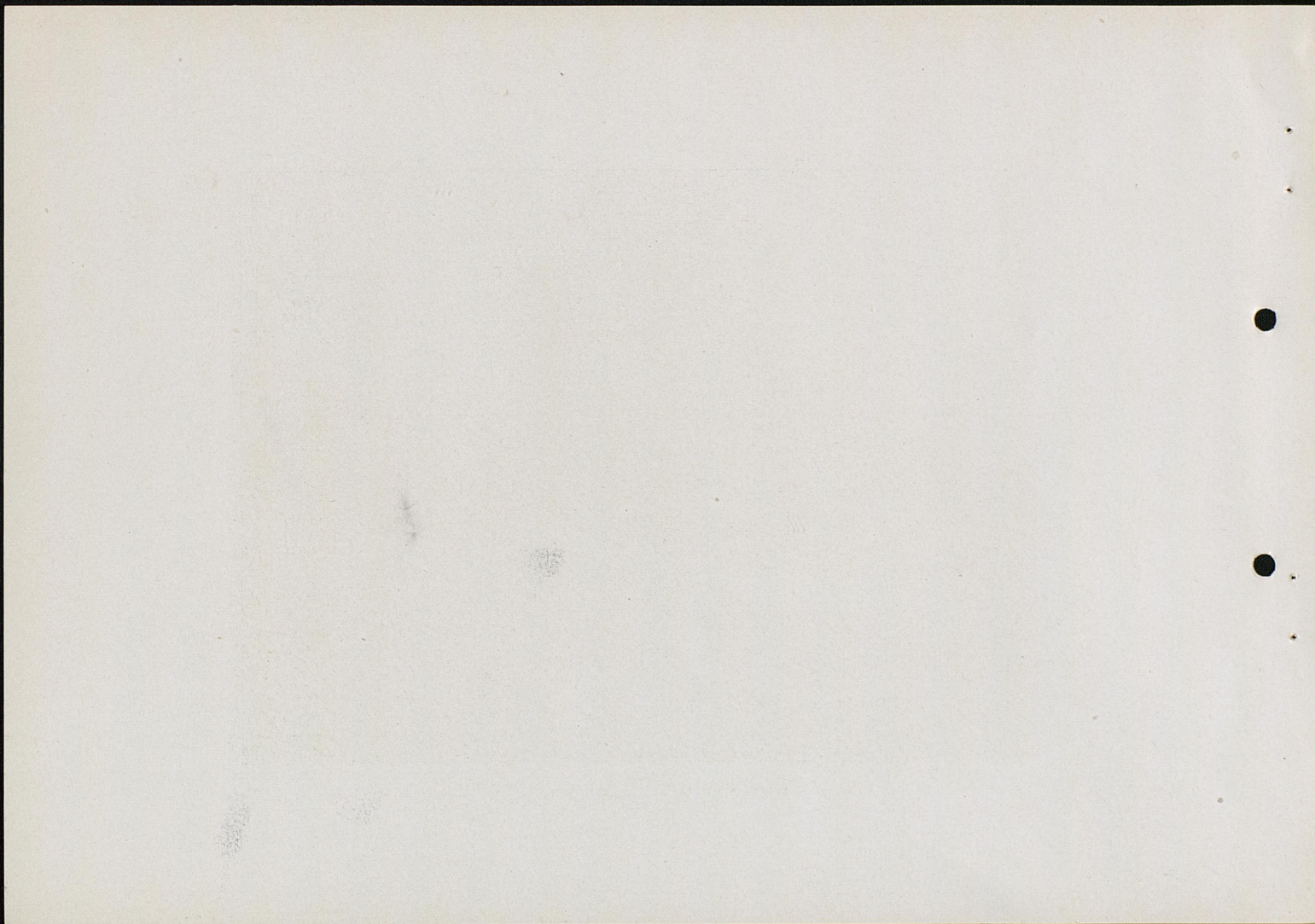


Intersection of Bryants Station and Briar Hill Road.



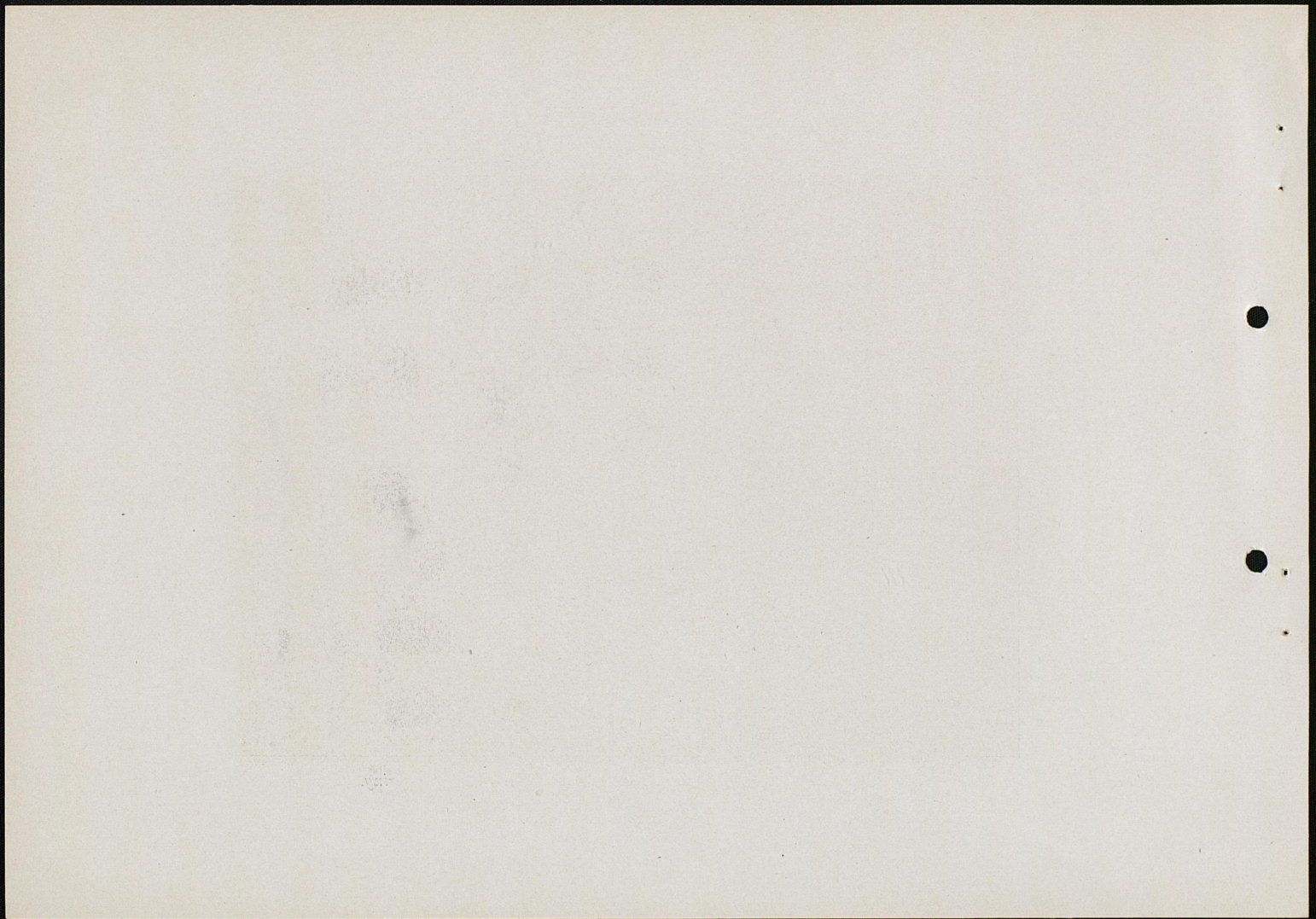


Georgetown Road at "Nursery Stud."



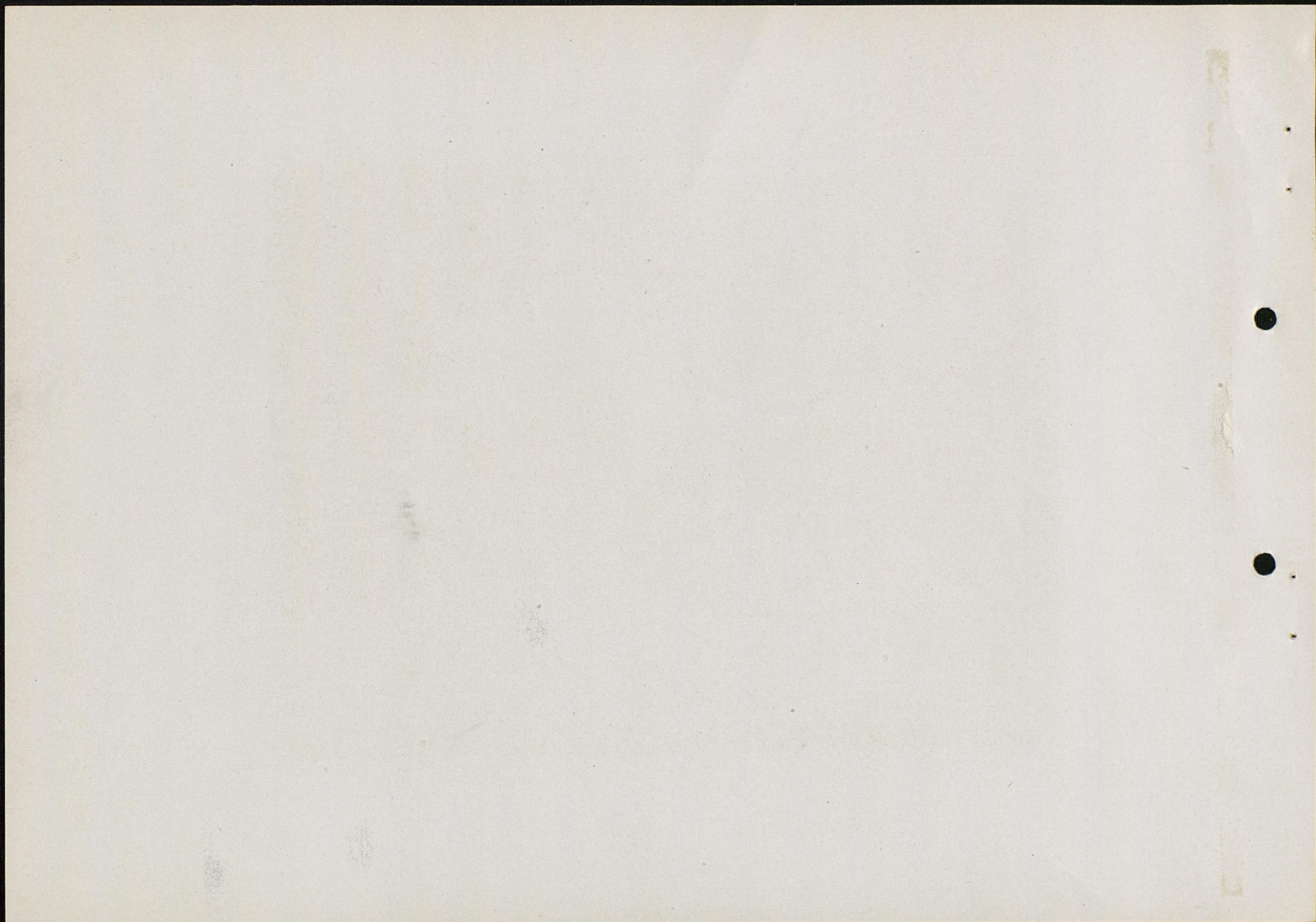


Bryants Station Road near the famous Bryants Station Spring.



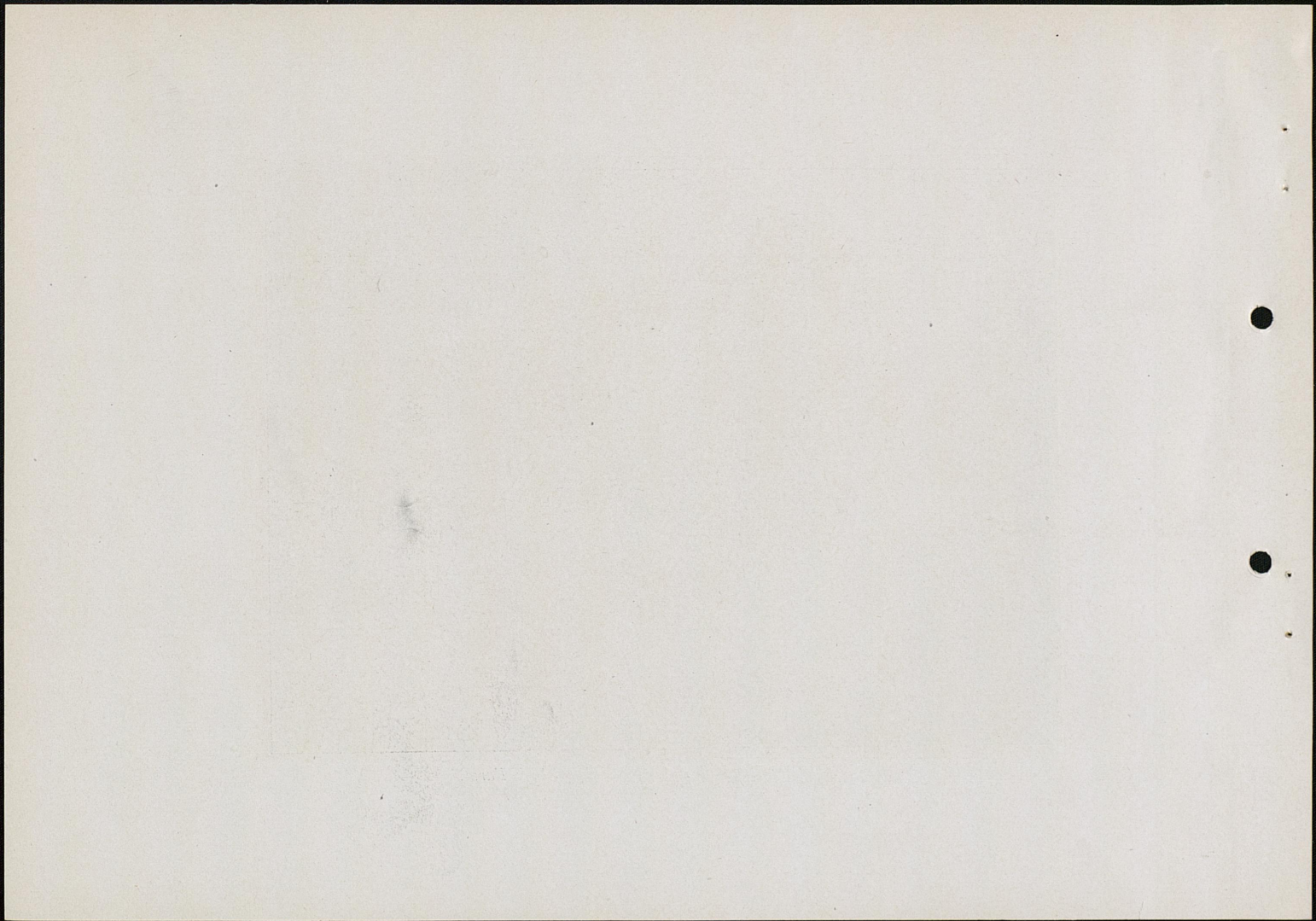


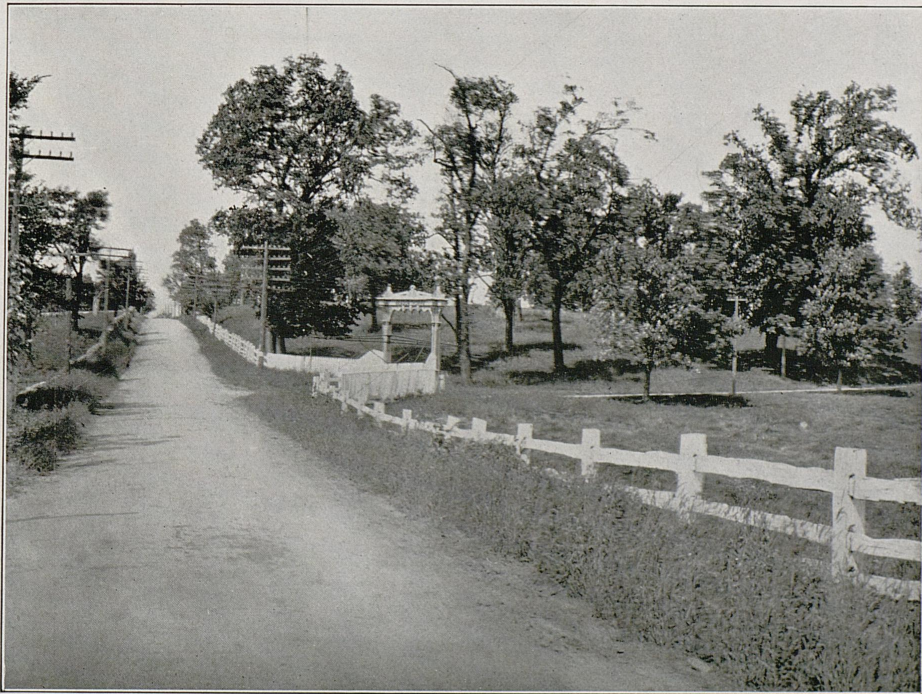
Nicholasville Road at "Alleghan."



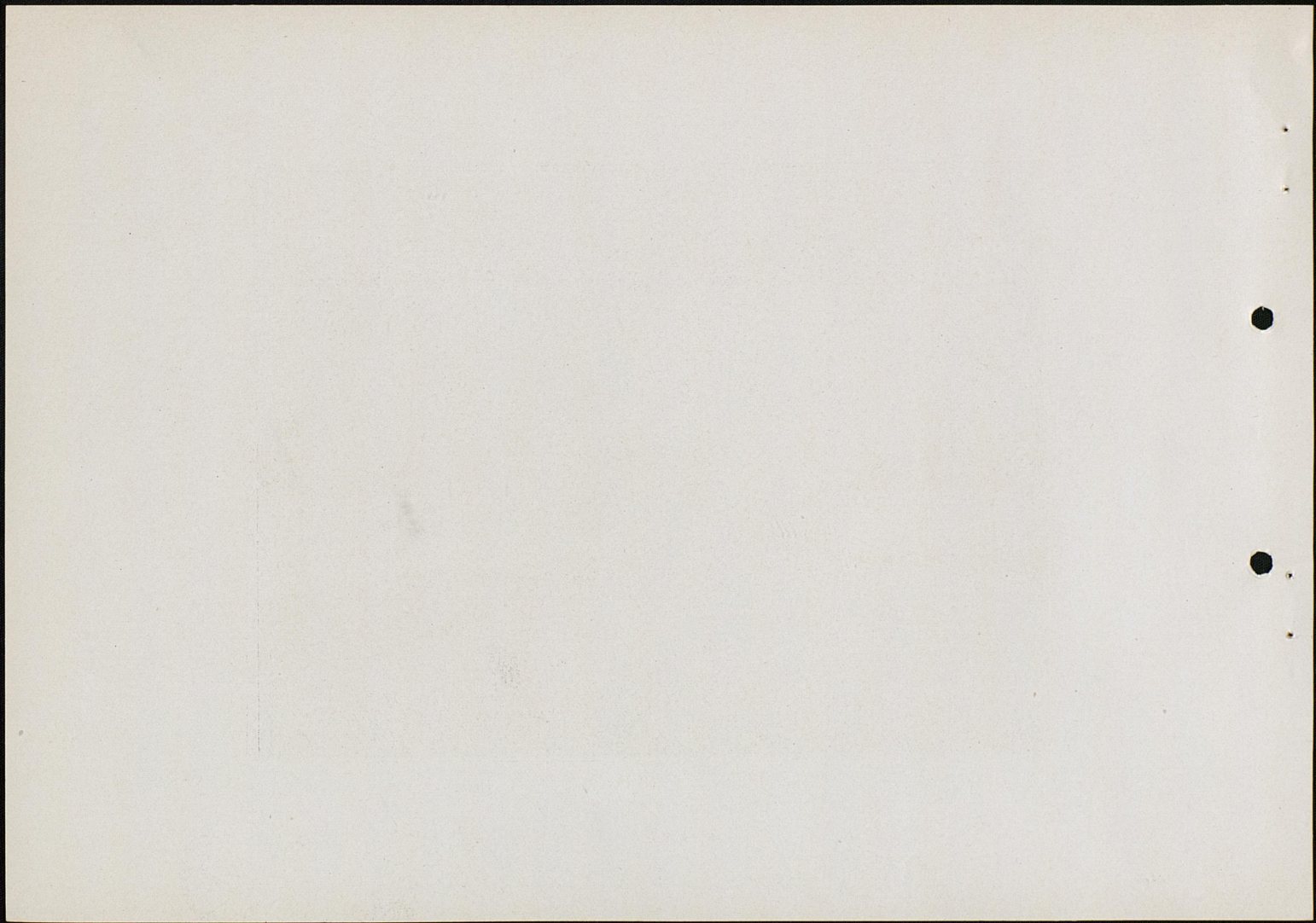


Winchester Road at Patchen Wilkes Stock Farm.



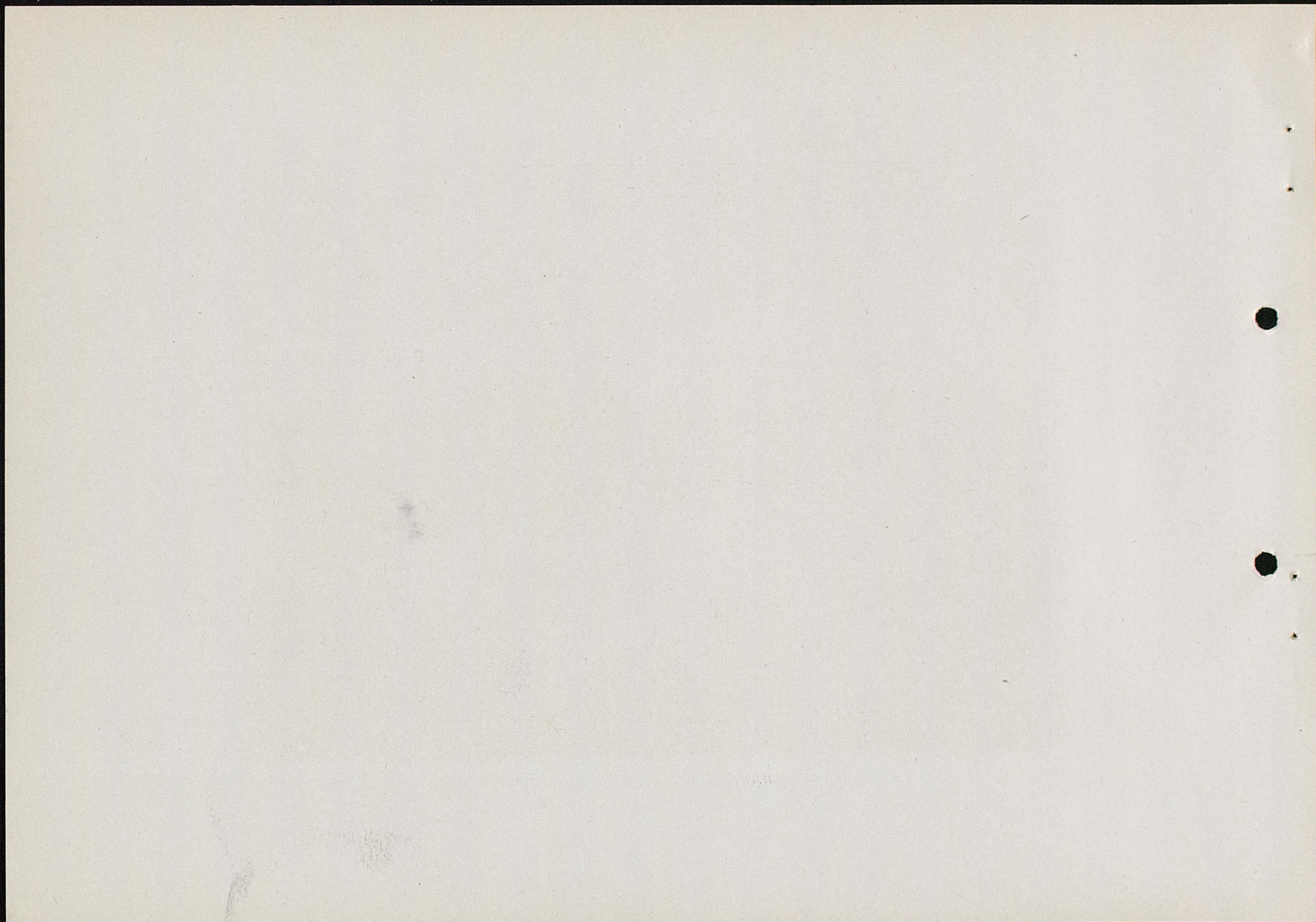


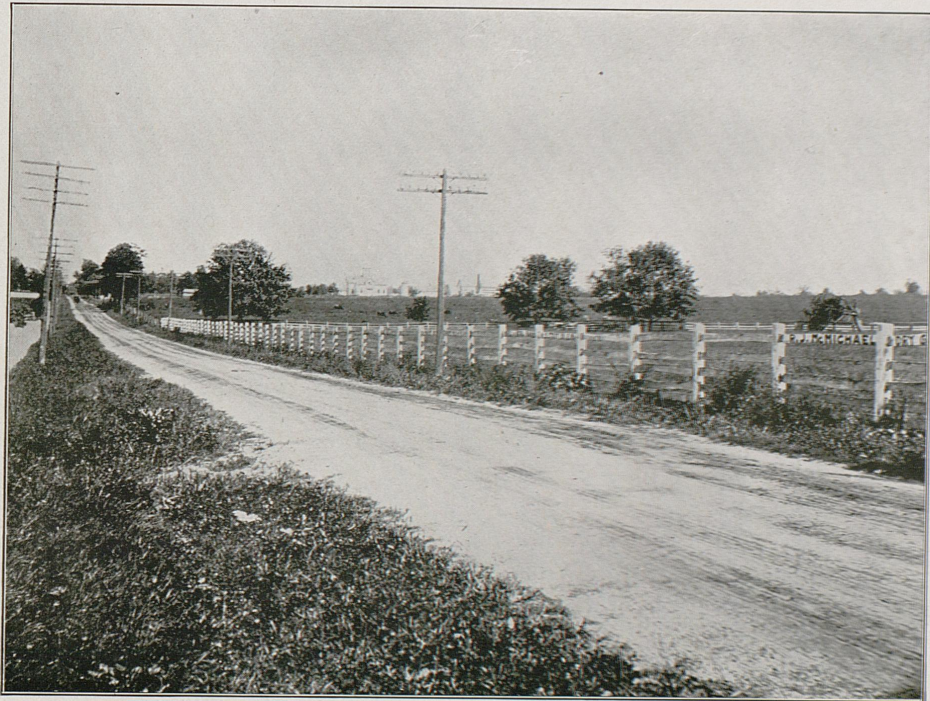
Leestown Road at "Mea douthorpe" Stock Farm.



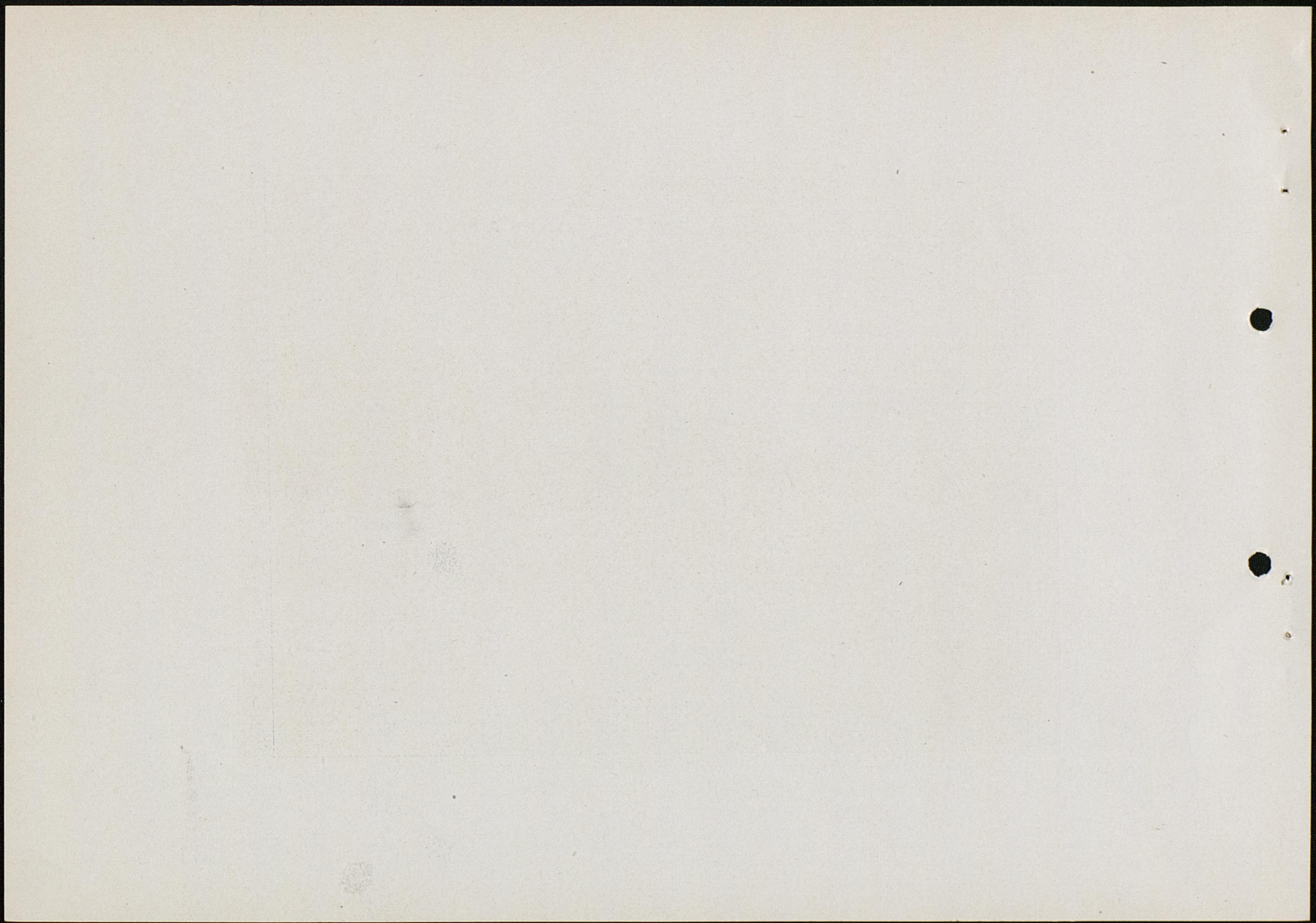


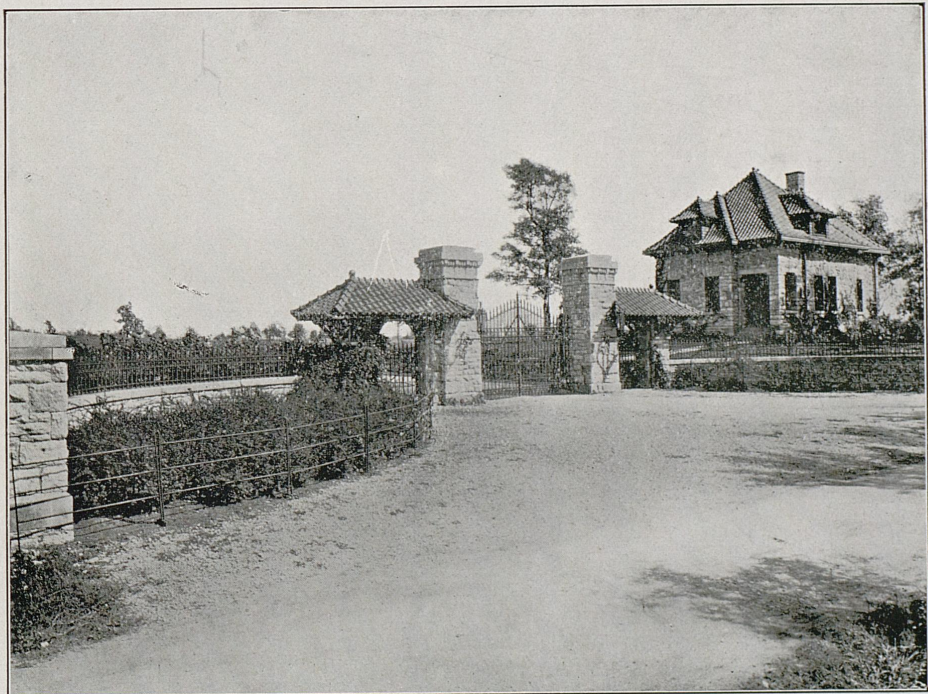
Entrance to Senorita Stock Farm.



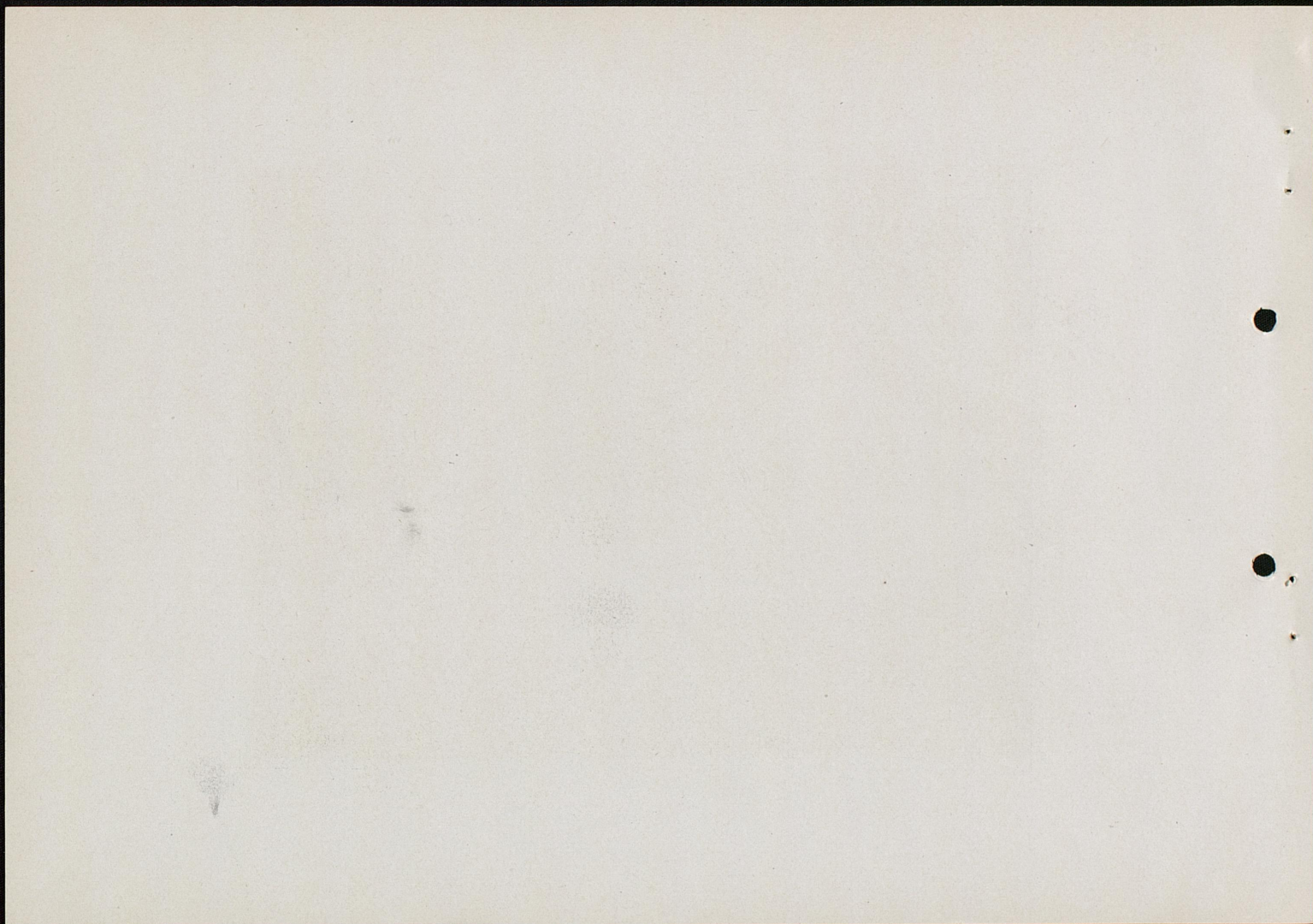


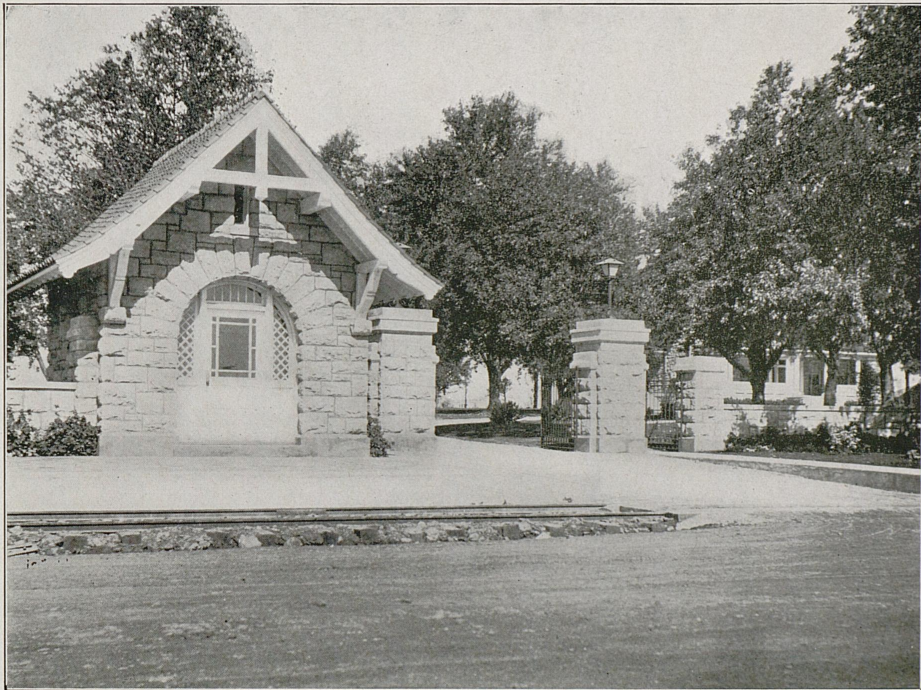
Nicholasville Road at State College Experimental Station.



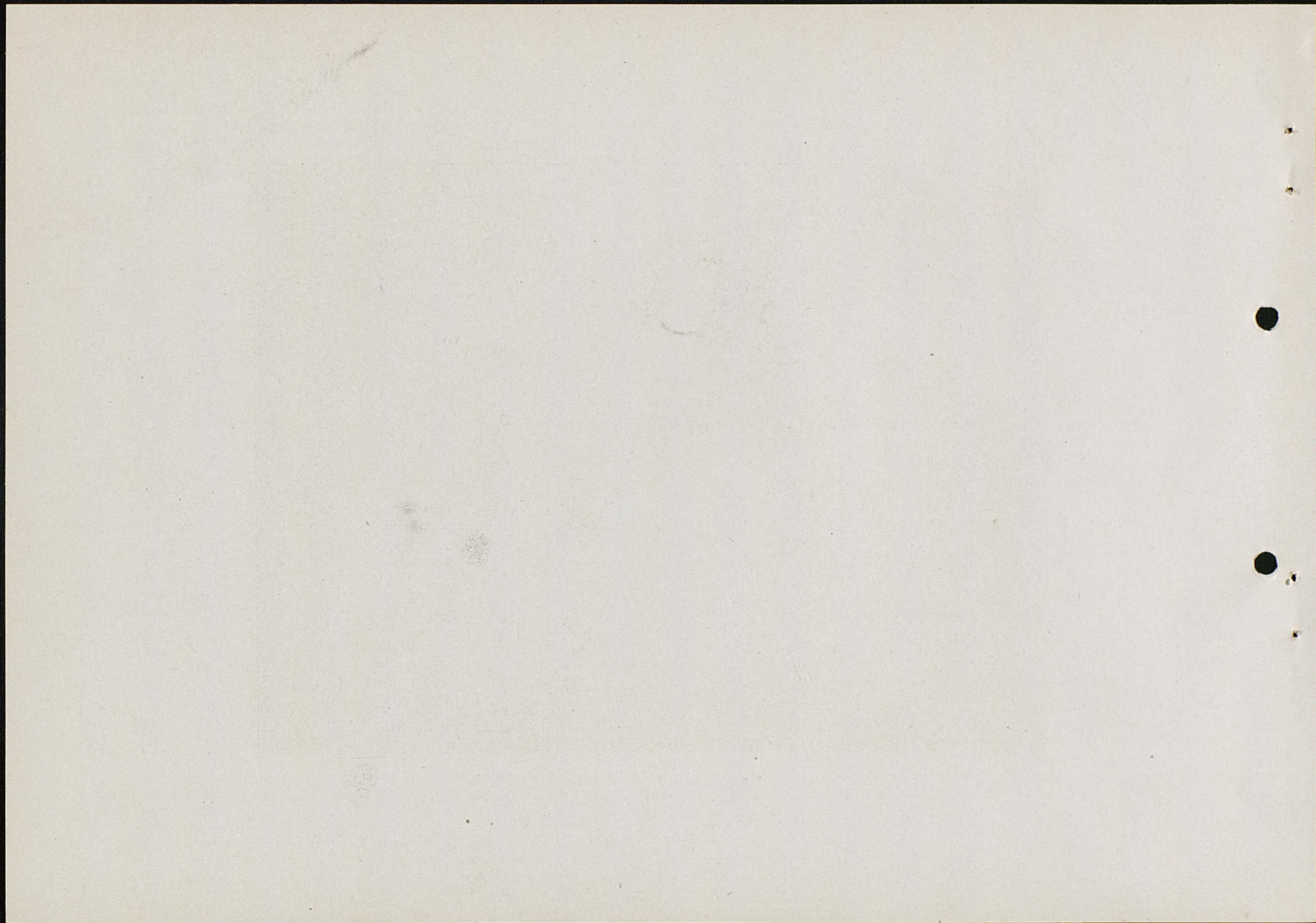


Entrance to "Green Hills," J. B. Haggin Estate, Iron Works Road.



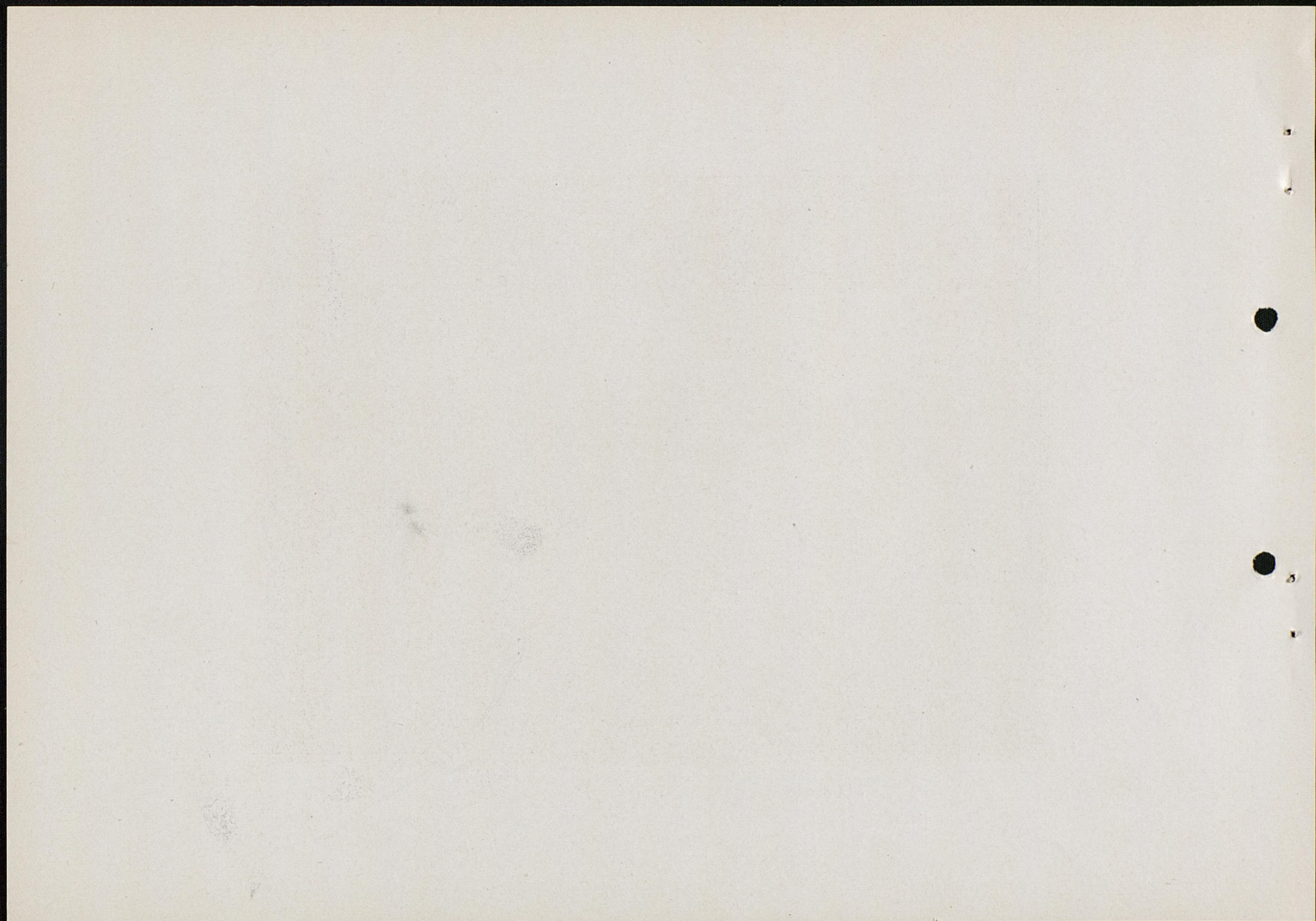


Maysville Road at Entrance to Elmendorf.



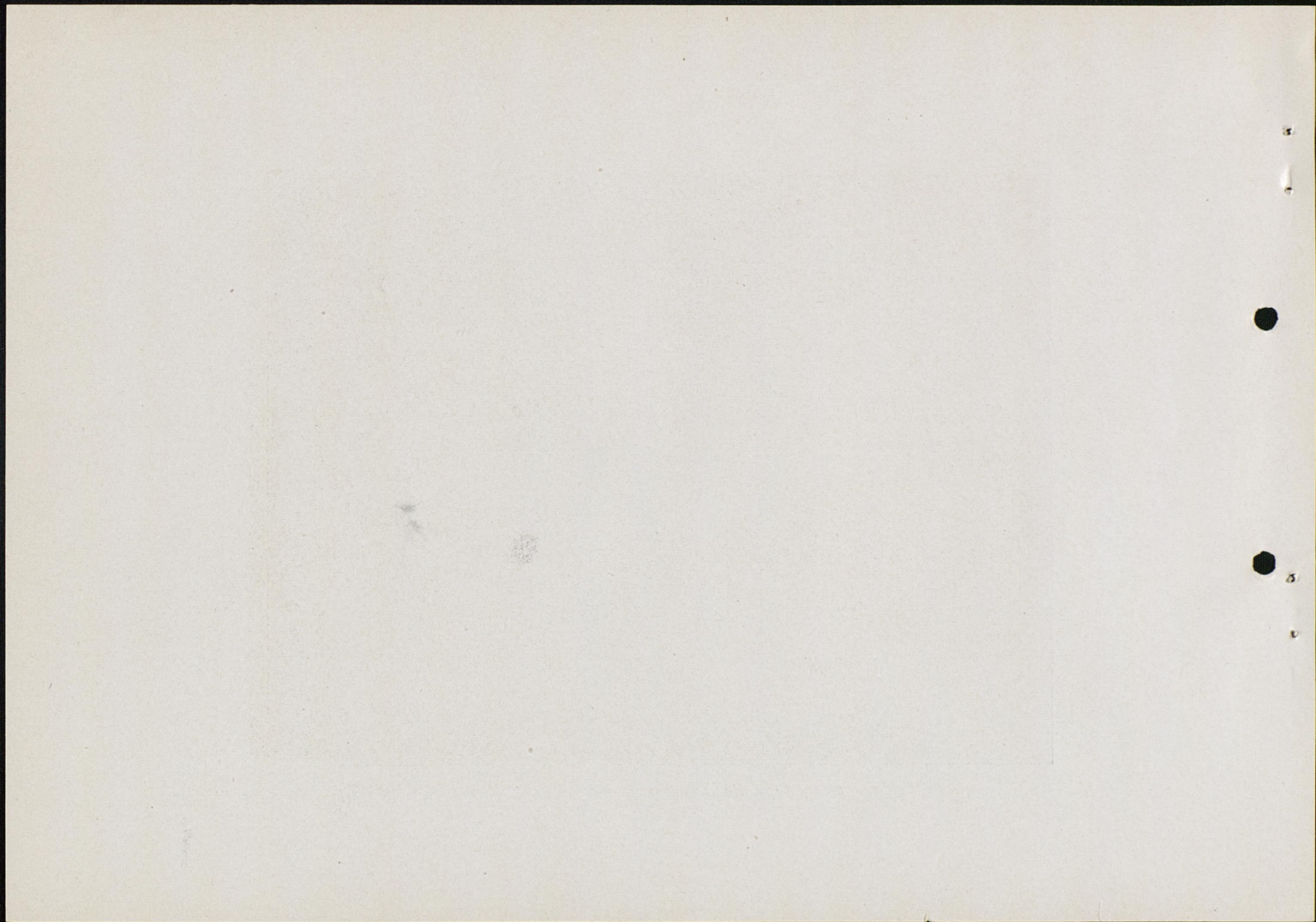


Harrodsburg Road at Entrance to Ingleside.



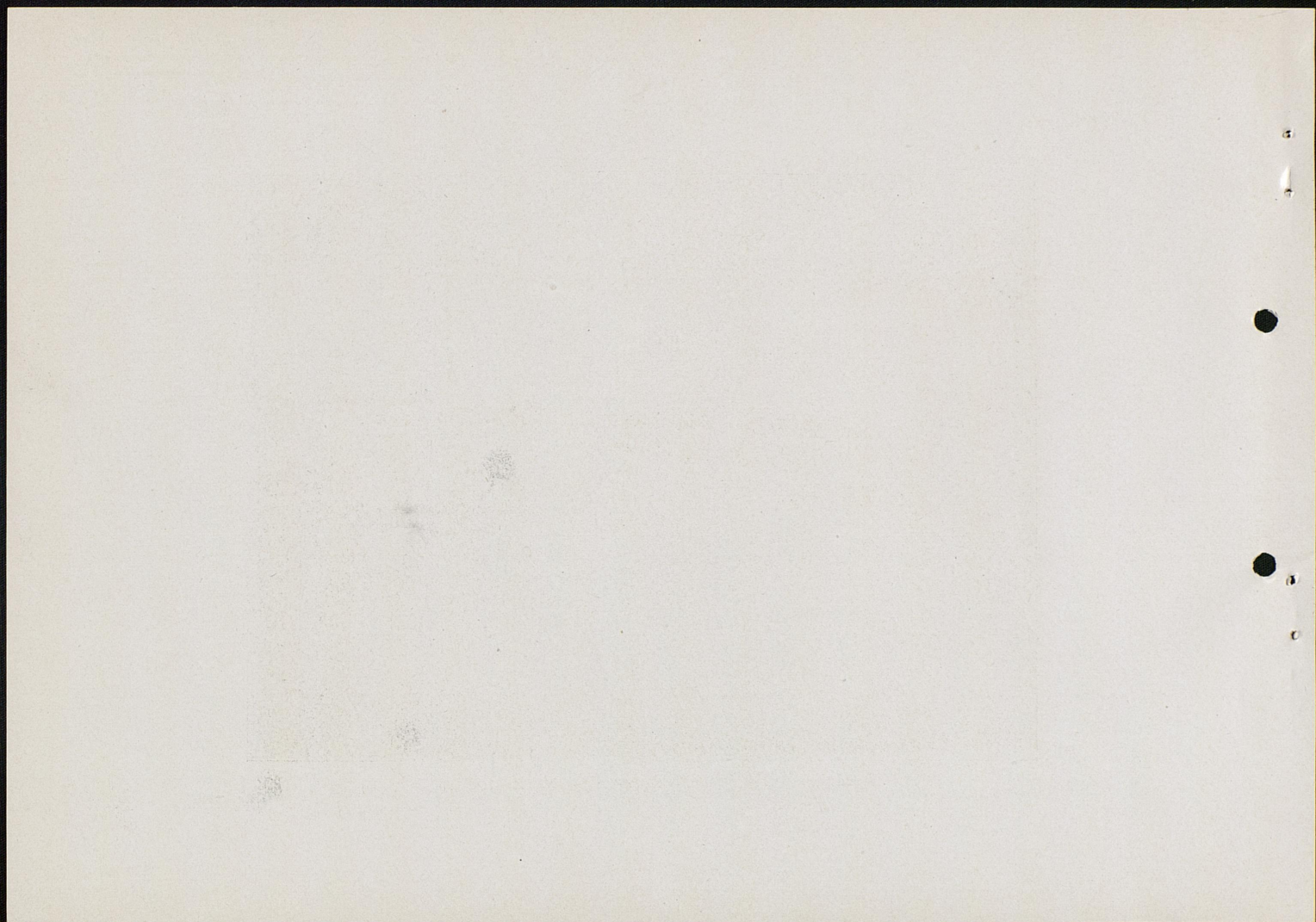


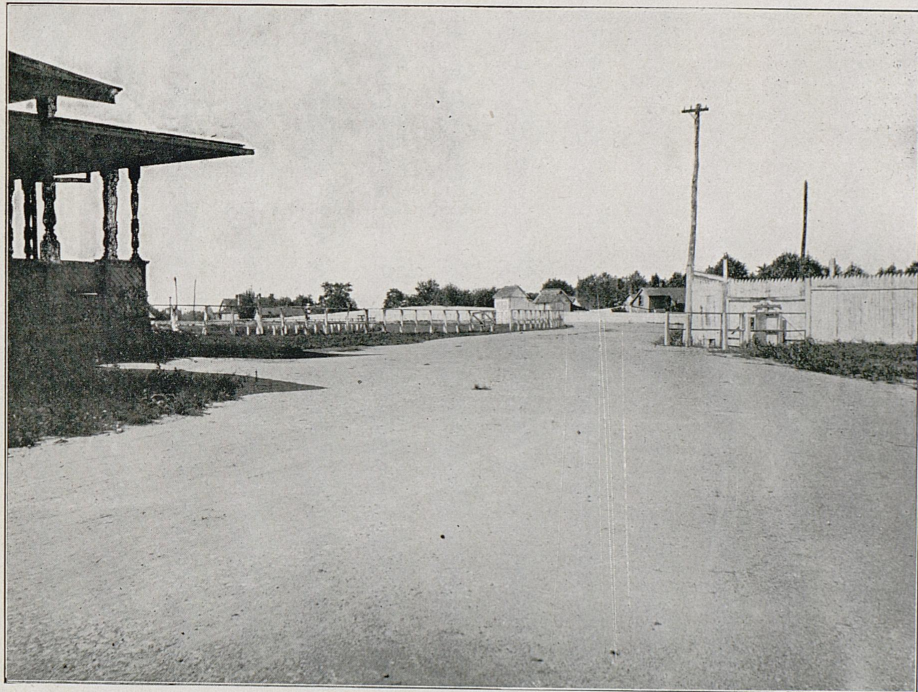
Georgetown Road at "Melbourne" Stock Farm.



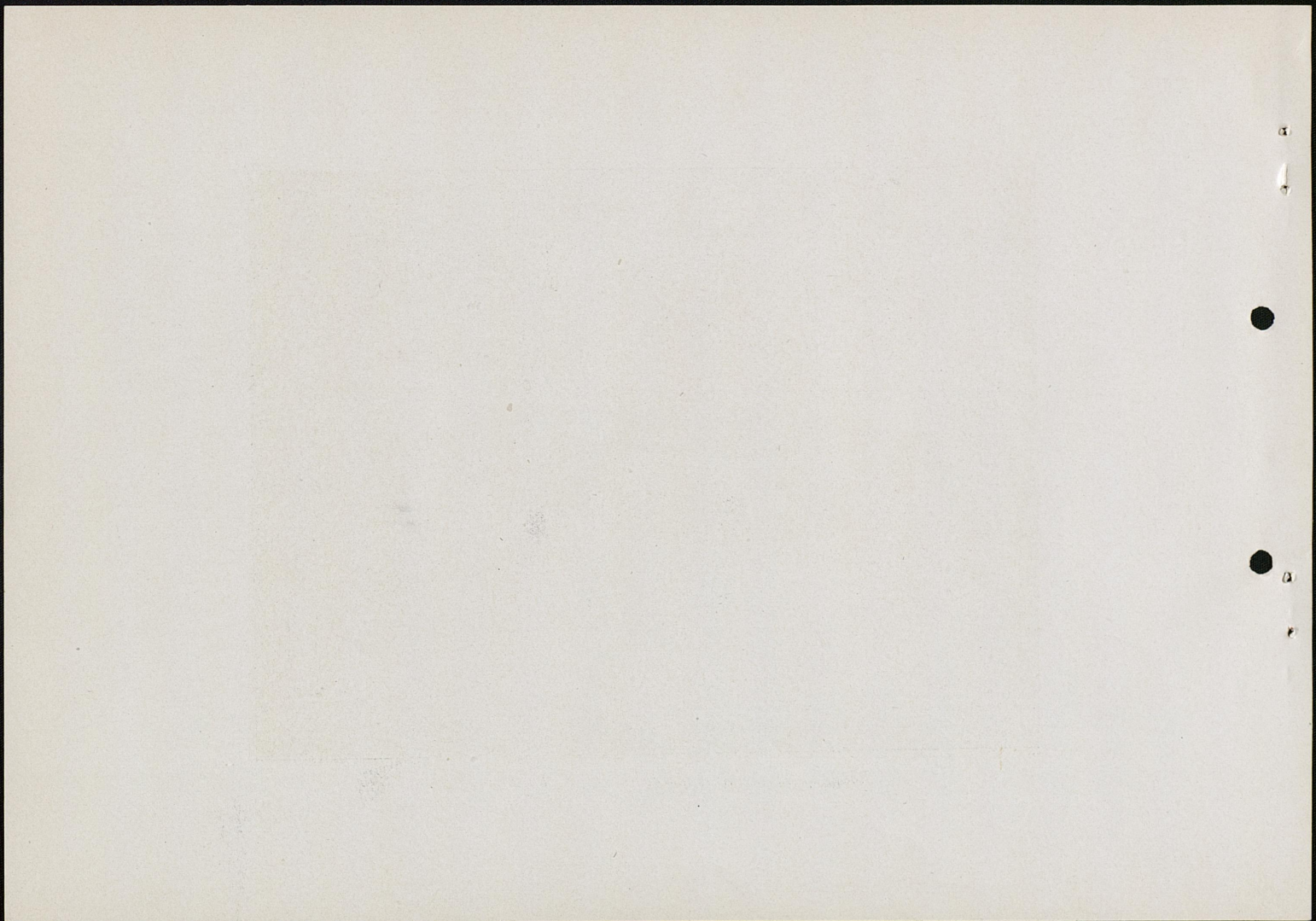


Entrance into the Kentucky Trotting Horse Breeders' Association Grounds.



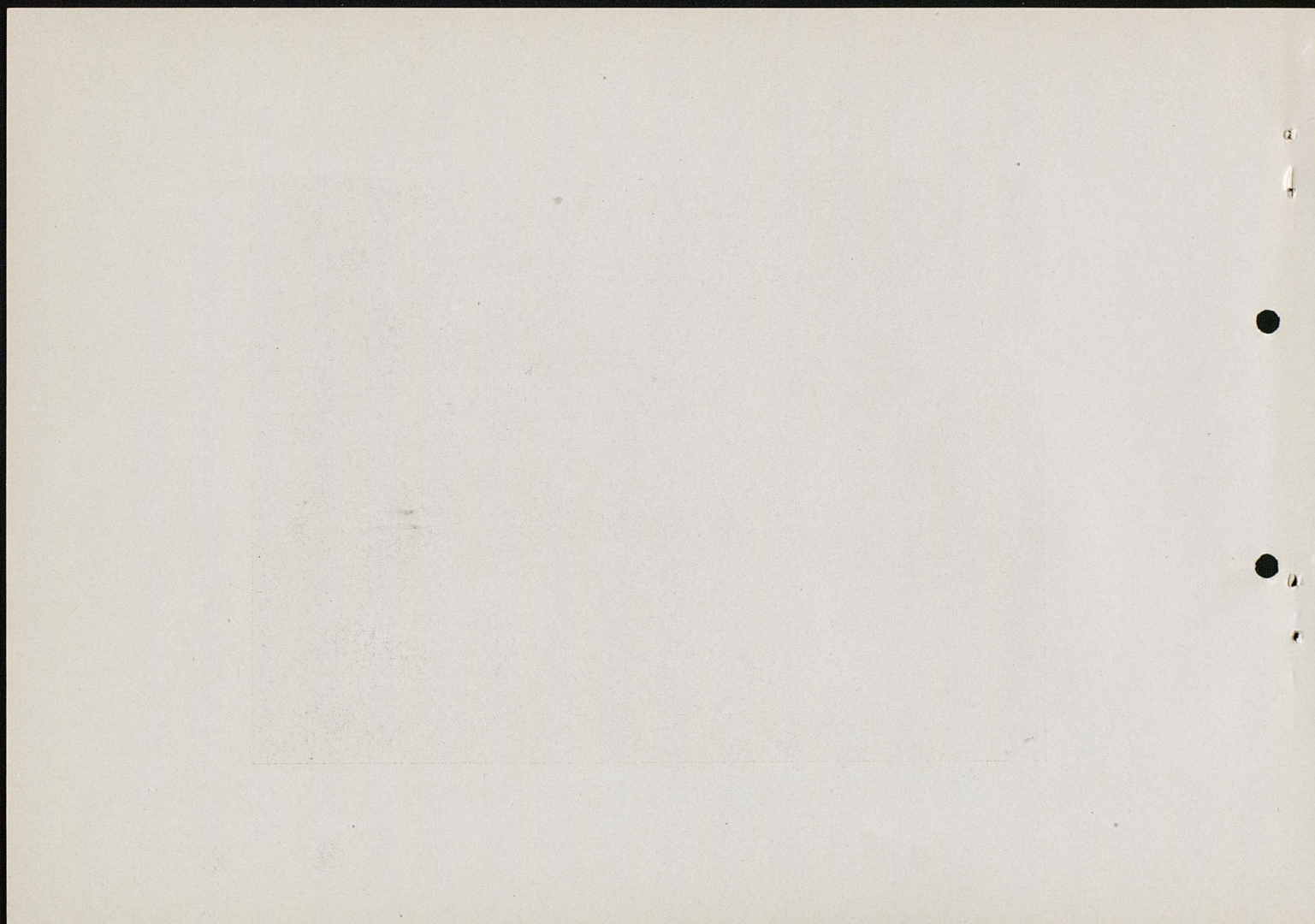


Roadway on the Grounds of the Kentucky Association.



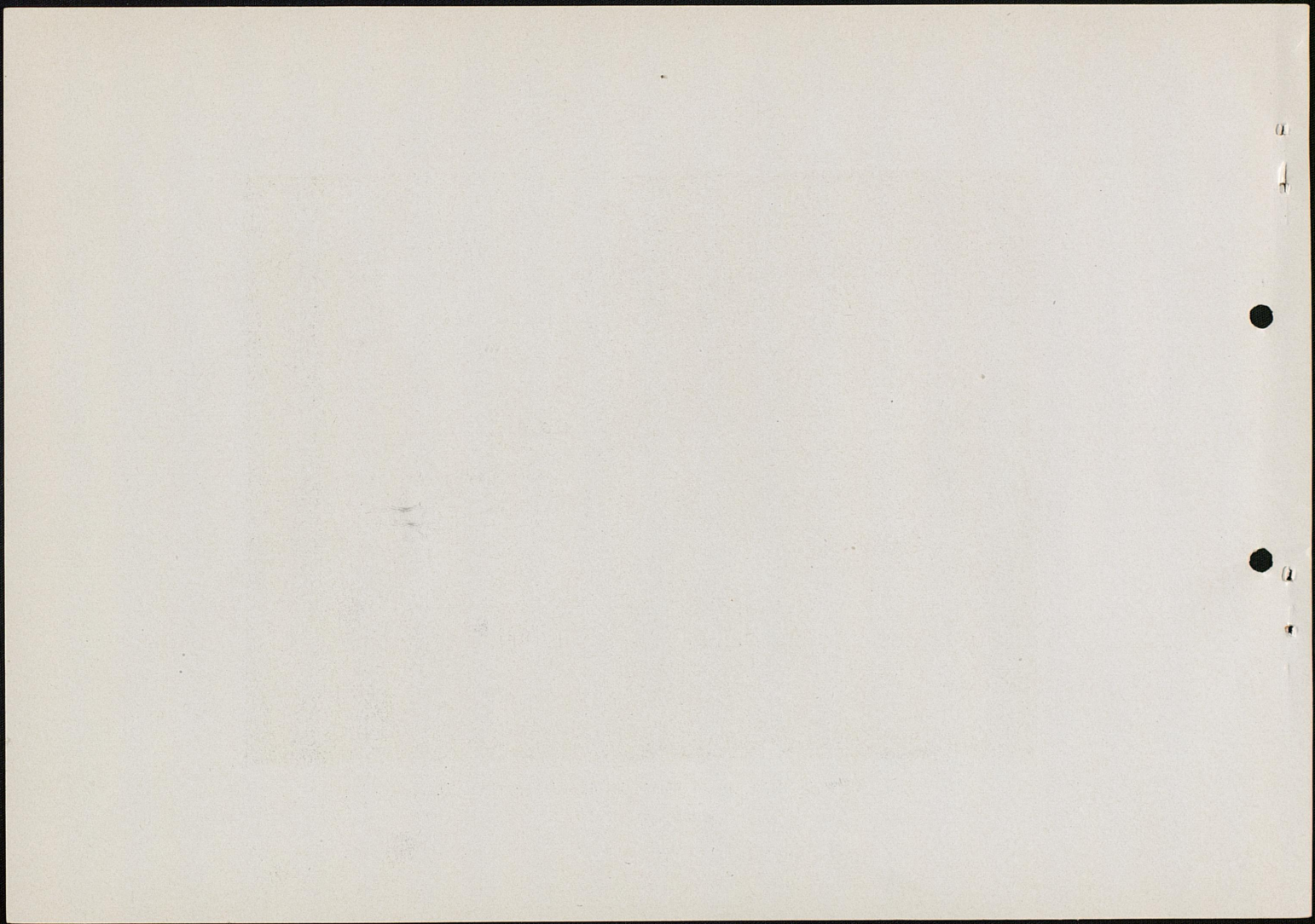


Boulevard on the Grounds of the K. T. H. B. Ass'n.



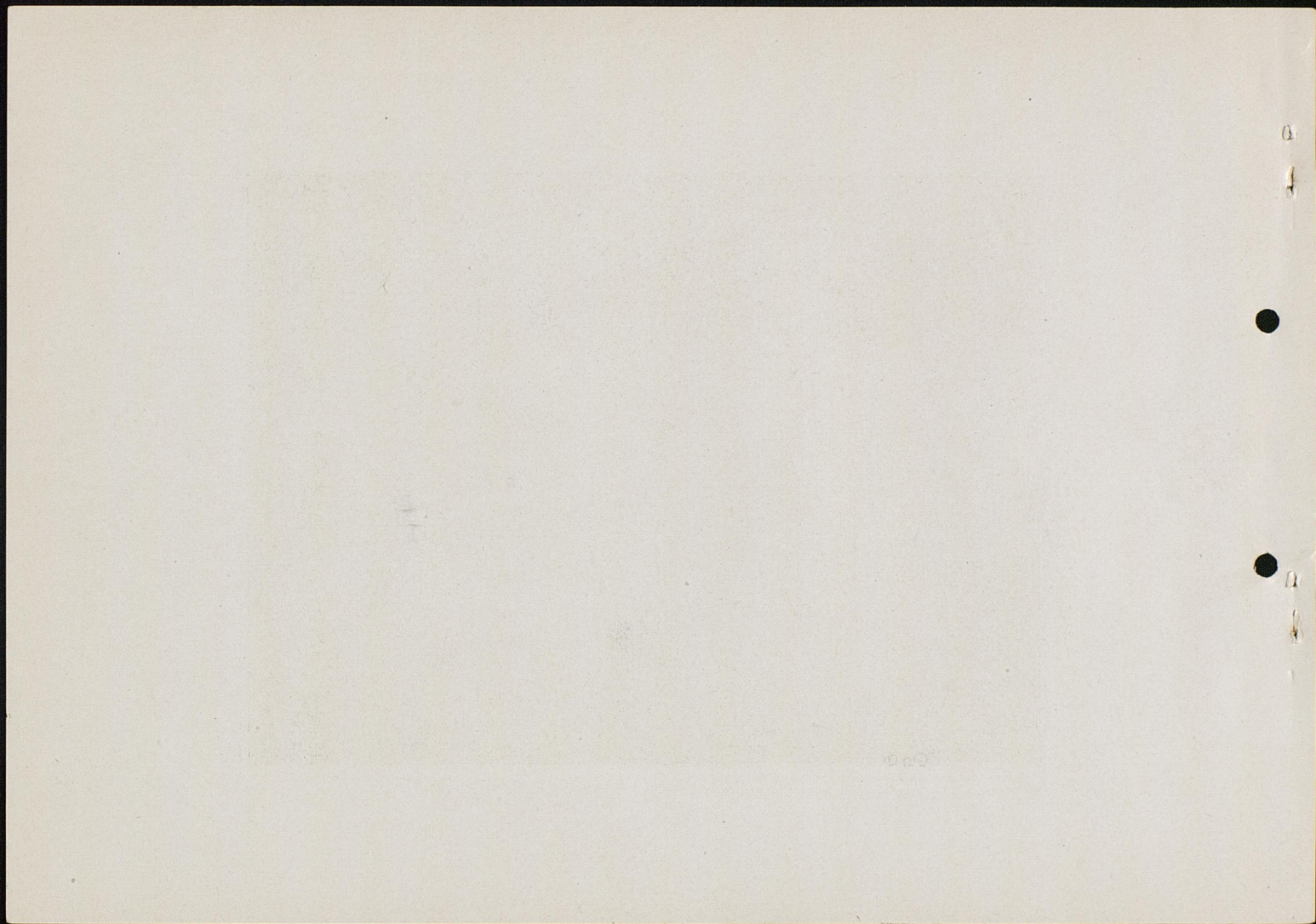


Main Driveway on Kentucky Association Grounds.





Roadway on the Grounds of the Kentucky Association.





Grading and Rolling a Road.

*
Rare Books
F
459
L6
H66
1910x

* RBR
917.6969
#7525

