

INSURANCE MAPS of MAYFIELD

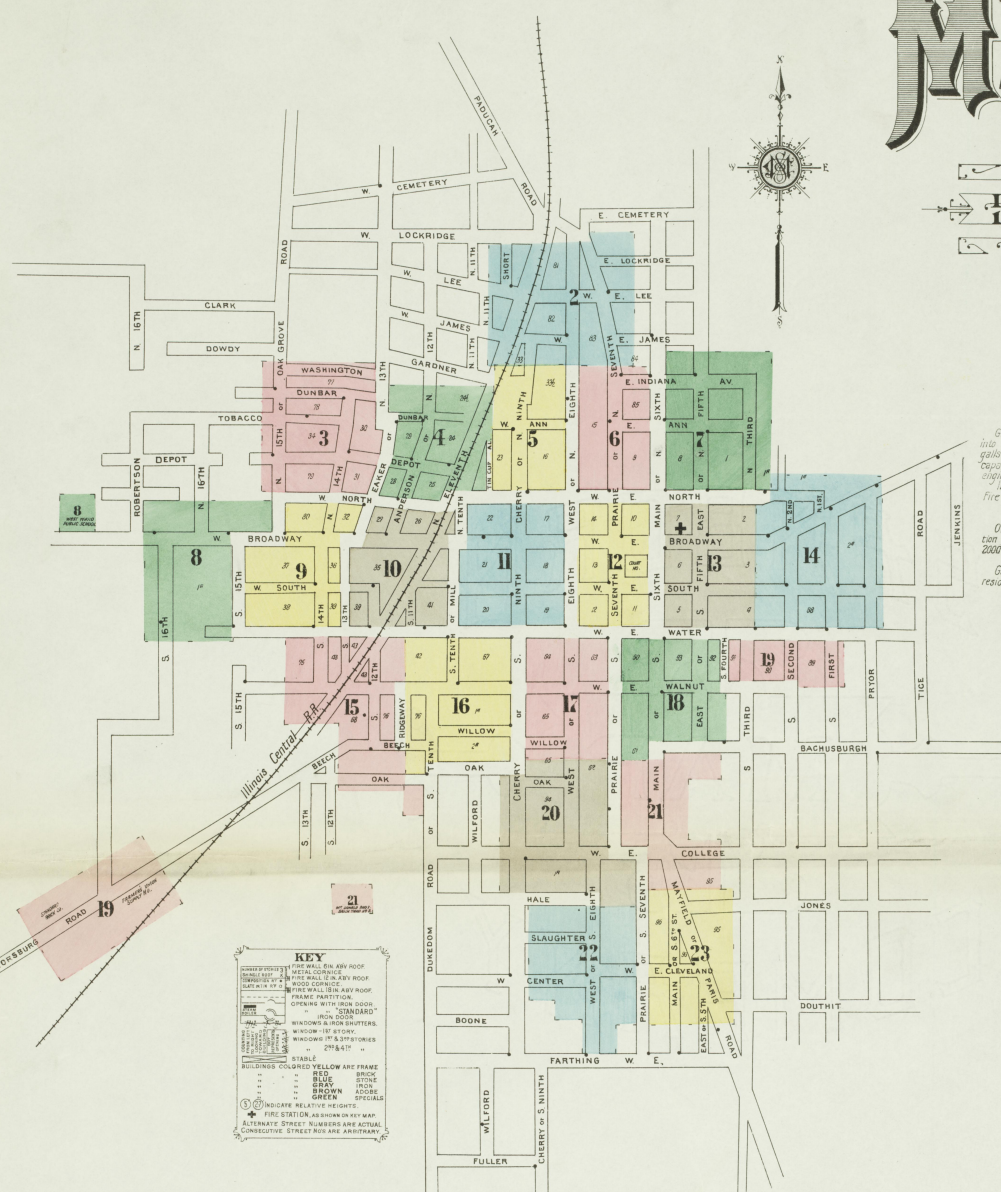
GRAVES COUNTY KENTUCKY

PUBLISHED BY THE SANBORN MAP COMPANY 11 BROADWAY, NEW YORK

SCALE 50 FT. TO AN INCH

AUG. 1910

Copyright 1910 by the Sanborn Map Co. C.D.F. 15442



Population 10000. Prevailing Winds W & S

WATER FACILITIES

Gravity and direct pressure system of water works. Water supply pumped from bored wells into reservoir of 200,000 gals. capacity by two air compressors, then into stand pipe at 125,000 gals. capacity and directly into mains by one Worthington compound duplex pumping engine capacity 2 million gals. per 24 hours and one Laddlow-Dunn-Gordon compound duplex pumping engine capacity 7 million gals. per 24 hours. Stand pipe used only as secondary supply.

FIRE DEPARTMENT

One chief and two men. Two horses. Fire alarm by whistle at pumping station. One combination hose and chemical wagon with 1000 ft. 2 1/2" hose and 50 gal. chemical tank 45 ft. of ladders 2200 ft. 2 1/2" hose in reserve. 1000 ft. 1 1/2" double hydrants. Average pressure 45 lbs. Fire pressure 150 lbs. Average daily consumption 400,000 gals. System installed 1891.

Grades above level. Streets brick paved in business section, macadamized and gravelled in residence section. Public lights electric.

KEY

WHITE WALLS IN ANY ROOF
 LIGHT BLUE WALLS IN ANY ROOF
 RED WALLS IN ANY ROOF
 GREEN WALLS IN ANY ROOF
 FRAME PARTITION
 OPENINGS IN WALLS
 "STANDARD"
 WINDOWS AND DOOR SILLINGS
 WINDOWS IN STORES
 WINDOWS IN FACTORIES
 WINDOWS IN SHOPS
 WINDOWS IN OFFICES
 WINDOWS IN GARAGES
 WINDOWS IN BARNYARDS
 WINDOWS IN STABLES
 WINDOWS IN SHEDS
 WINDOWS IN PORCHES
 WINDOWS IN PATIOS
 WINDOWS IN TERRACES
 WINDOWS IN BALCONIES
 WINDOWS IN PORCHES
 WINDOWS IN PATIOS
 WINDOWS IN TERRACES
 WINDOWS IN BALCONIES

STABLE
 BUILDINGS COLORED YELLOW AND FRAME
 RED BROCK
 BLUE STONE
 GREEN ADZE
 BROWN ADZE
 GREEN ADZE
 STABLE
 BUILDINGS COLORED YELLOW AND FRAME
 RED BROCK
 BLUE STONE
 GREEN ADZE
 BROWN ADZE
 GREEN ADZE

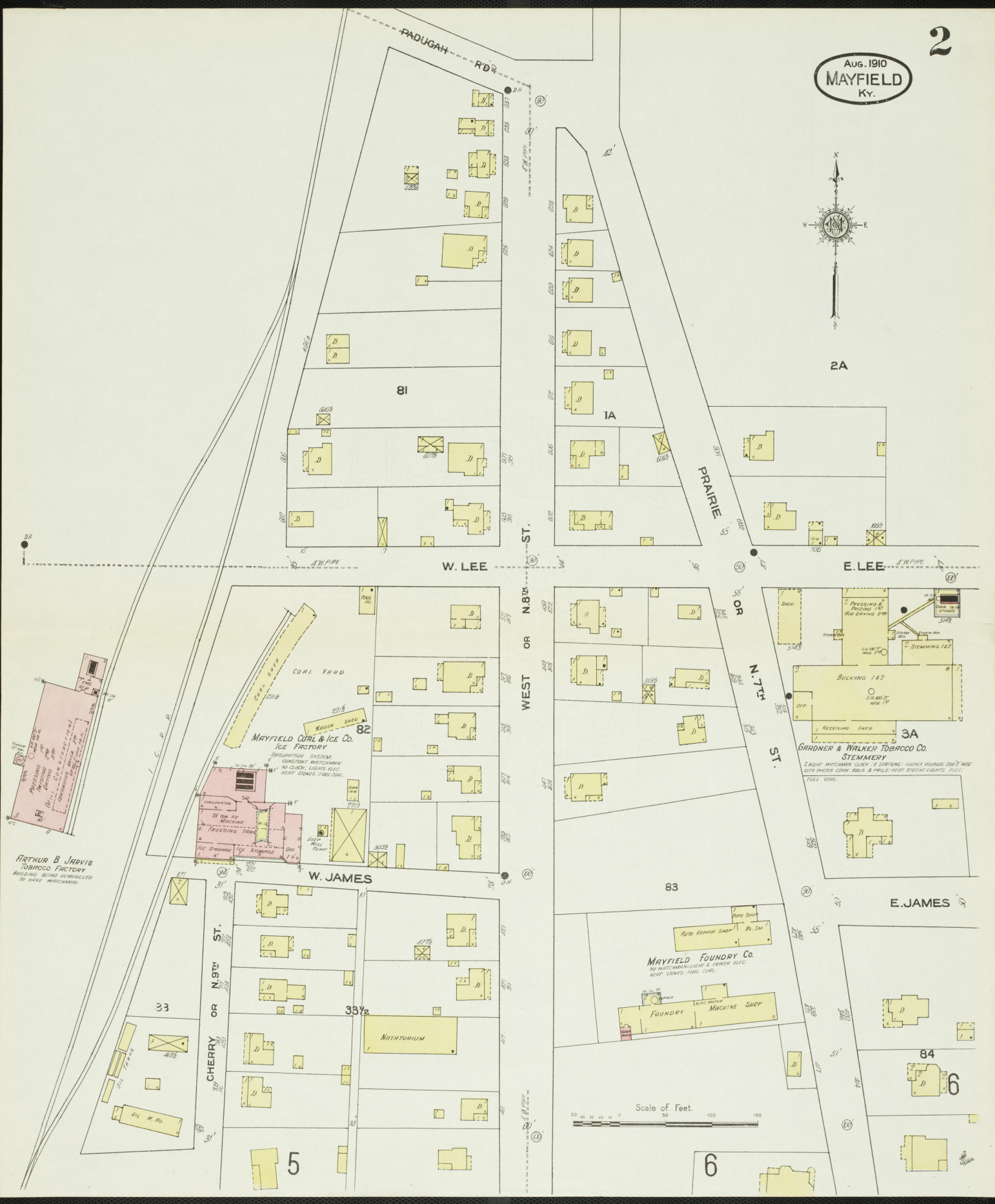
(C) INDICATE RELATIVE HEIGHTS.
 * FIRE CERTIFICATES AND PERMITS
 ALTERNATE STREET NUMBERS ARE ACTUAL
 CONSECUTIVE STREET NUMBERS ARE ARBITRARY

INDEX.

STREETS.	WEST	EAST	WEST	EAST	WEST	EAST	WEST	EAST	WEST	EAST	WEST	EAST					
Anderson, A	100-121	10	101-122	9	Indiana Ave., E.	I	100-123	6	North, W.	500-616	10	Sixteenth, N.	100-121	8	Walnut, W.	100-229	11
Ann, E.	200-229	4	201-230	3	James, E.	J	200-229	7	Oak, S.	701-841	5	Sixth, N.	100-307	8	Washington, W.	500-617	16
Bachman, B	300-320	12	301-321	11	Lee, E.	L	300-320	13	Prairie, N.	200-229	20	Tenth, N.	100-122	12	Water, E.	100-124	13
Beech, B	500-545	15	501-546	14	Main, N.	M	500-545	16	Prairie, S.	100-125	12	Thirteenth, N.	100-123	12	Water, E.	100-125	12
Broadway, E.	500-529	13	501-530	12	Mayfield and Paris Road, Mill.		500-529	14	Prairie, S.	100-126	12	Thirteenth, N.	100-124	12	Water, E.	100-126	12
Center, C	100-122	11	101-123	10	North, N.	N	100-122	15	Prairie, S.	100-127	12	Thirteenth, N.	100-125	12	Water, E.	100-127	12
Cherry, C	100-123	11	101-124	10	Pryor, Pryorburg Road.		100-123	16	Prairie, S.	100-128	12	Thirteenth, N.	100-126	12	Water, E.	100-128	12
Cleveland, E.	200-229	4	201-230	3	Second, N.	S	200-229	17	Prairie, S.	100-129	12	Thirteenth, N.	100-127	12	Water, E.	100-129	12
College, E.	100-122	11	101-123	10	Second, E. Broadway to E. North 14		100-122	18	Prairie, S.	100-130	12	Thirteenth, N.	100-128	12	Water, E.	100-130	12
Depot, D	500-615	4	501-616	3	Seventh, N.	S	500-615	19	Prairie, S.	100-131	12	Thirteenth, N.	100-129	12	Water, E.	100-131	12
Dukeston Road, D	500-582	16	501-583	15	Seventh, N.	S	500-582	20	Prairie, S.	100-132	12	Thirteenth, N.	100-130	12	Water, E.	100-132	12
Dunbar, D	601-629	15	602-630	14	Seventh, N.	S	601-629	21	Prairie, S.	100-133	12	Thirteenth, N.	100-131	12	Water, E.	100-133	12
Eaker, E	100-122	10	101-123	9	Seventh, N.	S	100-122	22	Prairie, S.	100-134	12	Thirteenth, N.	100-132	12	Water, E.	100-134	12

* Indicates only one side of Street shown.

Aug. 1910
MAYFIELD
Ky.

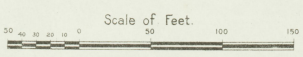


ARTHUR B. JARVIS
TOBACCO FACTORY
BUILDING BEING REMODELED
TO MAKE WATCHMEN'S

MAYFIELD COAL & ICE Co.
ICE FACTORY
RESURFACING SYSTEM
CONCRETE WATCHMAN
NO. 1000 LIGHTS ELEC.
HEAT STOVES-TUBS

GARDNER & WALKER TOBACCO Co.
STEMMERY
2 NIGHT WATCHMEN, CLOCK-3 STATIONS; HOURLY BOUNDS 200' HOE;
CITY WATER CONN. BOLS & PHILLS; HEAT STEAM LIGHTS; FUEL;
FULL CORN.

MAYFIELD FOUNDRY Co.
FOUNDRY MACHINE SHOP
AUTO. REPAIR SHOP BLS. SM.
PIPE SHOP



Aug. 1910
MAYFIELD
Ky.

3

DUNBAR
ST. N. 13TH
OR
EAKER
4

WASHINGTON

DUNBAR

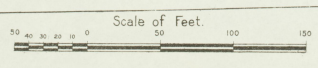
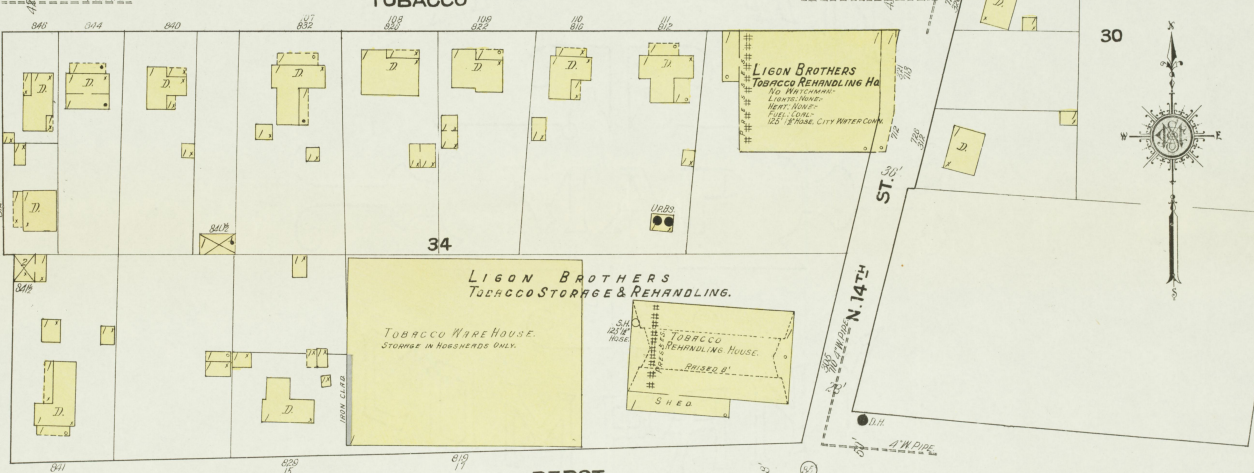
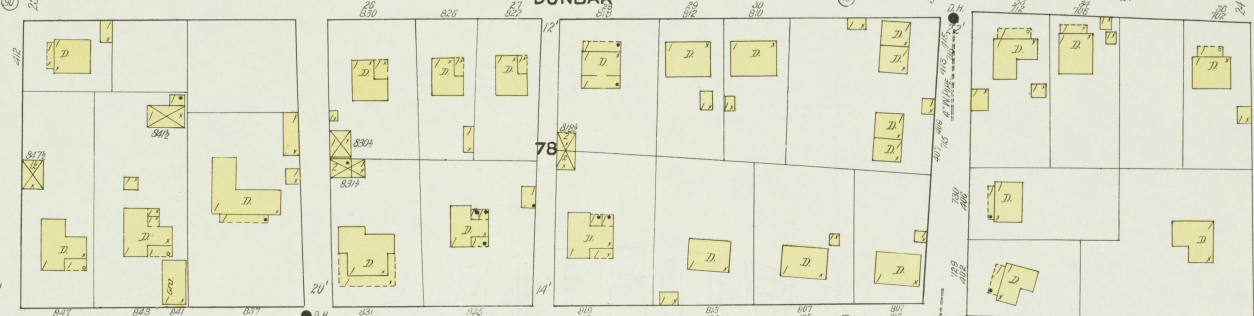
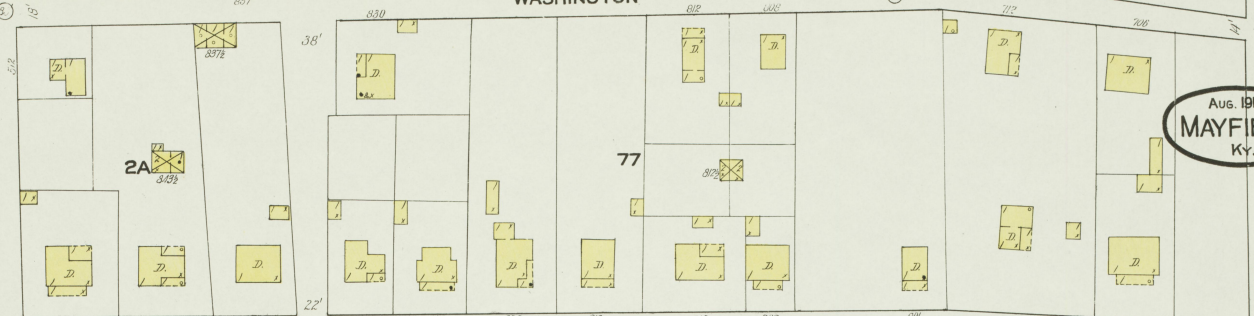
TOBACCO

DEPOT

W. NORTH

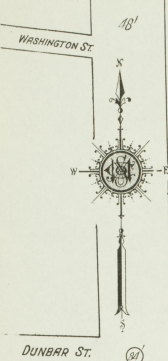
W. NORTH

1A
2A
3A
4A
5A
8



P.D. ROBINSON
TOBACCO REHANDLING
No Warehouse
No Fire Insurance
VETERINARY

Aug. 1910
MAYFIELD
Ky.



G.R. ALLEN, TOBACCO W. HO.
(STORAGE IN HOGHEADS ONLY)

GRIFFITH WARE HO'S.
AMERICAN SNUFF CO. LESSEE.
TOBACCO WARE HO.
(STORAGE IN HOGHEADS ONLY)

RIGHT WATCHMAN IN SEASON
CIGARETTE STAMPS TO BE MADE
ROUNDS - NO LIGHTS
HEAT - STOP & STOVE - DEL. COM.

24 1/2

DUNBAR

DUNBAR

AMERICAN SNUFF CO.
TOBACCO REHANDLING HO.

BUILDING NO. 1

BUILDING NO. 2

(MILL CONSTR.)
FROM PLANS
BUILDING MADE COMPLETE

24

J.S. BENNETT
TOBACCO REHANDLING HO.

I.M. PALMER
TOBACCO REHANDLING HO.

HENRY BENNETT
TOBACCO REHANDLING HO.

R.E. WRIGHT
TOBACCO REHANDLING HO.

J.E. LUCAS
HOGHEAD CRACK

G.R. ALLEN
TOBACCO REHANDLING HO.

ANDERSON OR N 12TH ST.

EAKER OR N 13TH ST.

DEPOT

KENNEDY & ALLEN
TOBACCO REHANDLING
STEMMING PRIZING

USHER & ALLEN
TOBACCO WARE HO.

USHER & ALLEN
TOBACCO REHANDLING HO.

N. 11TH ST.

ILLINOIS CENTRAL R. R. FREIGHT SHED

W. NORTH

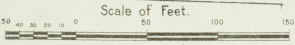
28

25

23

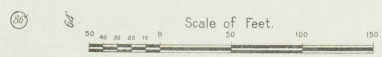
10

11





**RU KEVIL & SON
FLOUR MILL**
CAPACITY 100 BARRILS PER DAY
NO. 10 WATSON, 10 1/2 5/8 IN. DIA.
LONGS ELECTRIC 1/2 1/4 IN. DIA.
300 22 HOSE BARRILS & PULVER
MACHINERY
1 1/2 P. 3/4 IN. DIA. & 1/2 IN. DIA. BOOTS
2 1/2 P. 3/4 IN. DIA. & 1/2 IN. DIA. BOOTS
3 P. 3/4 IN. DIA. & 1/2 IN. DIA. BOOTS
COLLECTOR HOIST CLEANER
COLLECTOR HOIST
2 1/2 P. 3/4 IN. DIA. & 1/2 IN. DIA. BOOTS
1 1/2 P. 3/4 IN. DIA. & 1/2 IN. DIA. BOOTS
COLLECTOR HOIST



4

6

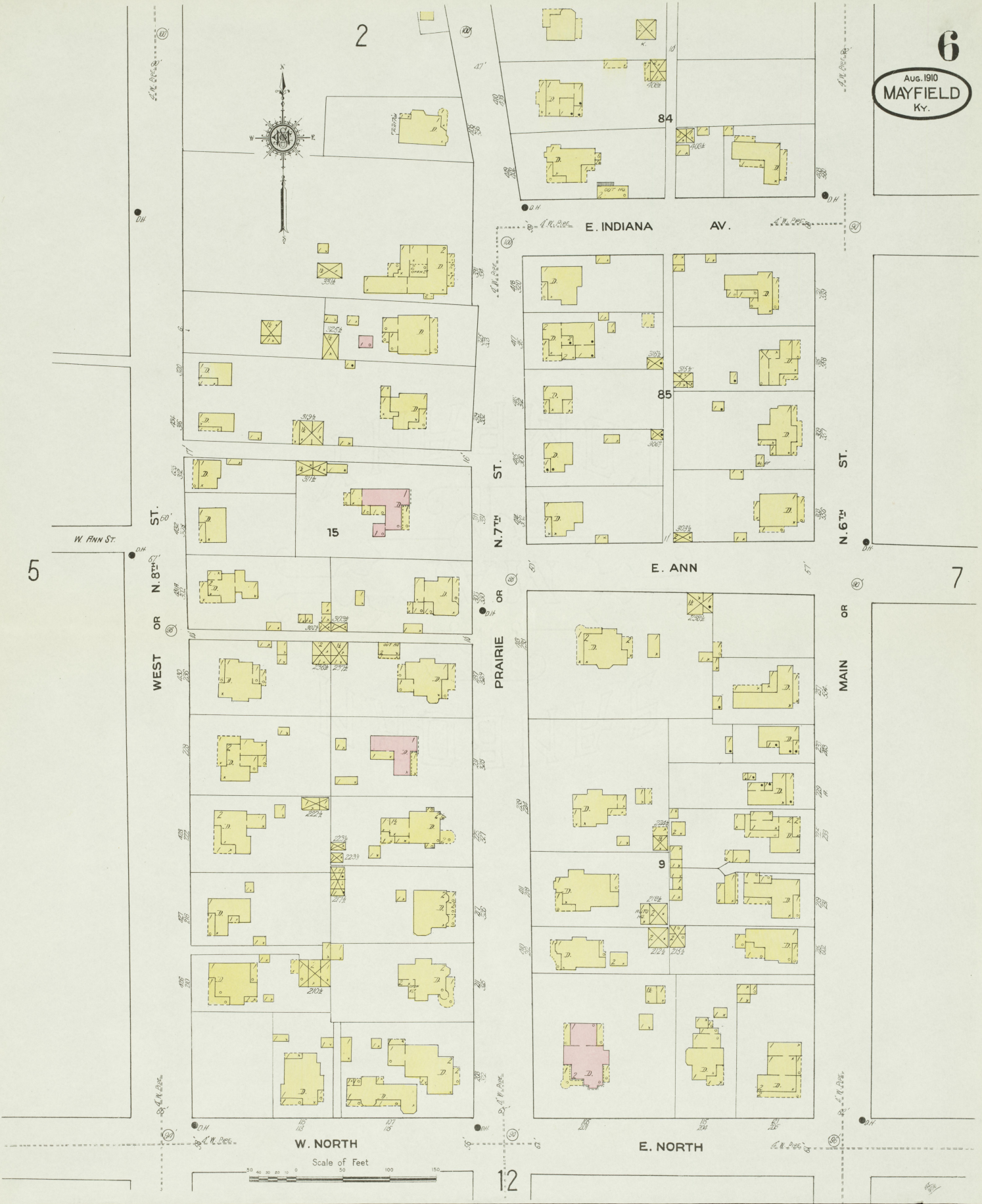
CHERRY OR N. 9TH ST.

WEST OR N. 8TH ST.

W. ANN

W. NORTH

11



Scale of Feet
0 50 100 150

12

7

5

2

84

85

15

9

WEST OR N. 8TH ST.

PRAIRIE OR N. 7TH ST.

MAIN OR N. 6TH ST.

E. INDIANA AV.

E. ANN

W. NORTH

E. NORTH

NORTH WARD
PUBLIC SCHOOL
LIGHTS, ELECTRIC,
HEAT, STEAM.

2A

E. INDIANA

AV.

1A



86

87

6

ST.

ST.

E. ANN

N. 6TH

N. 5TH

ST.

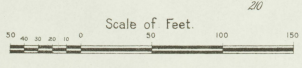
MAIN
OR

EAST

N. 3RD

8

1A



E. NORTH

13

14

Aug. 1910
MAYFIELD
Ky.

3
RD
GROVE
ST
OAK

N. 16TH ST.

5A

BROADWAY
BAPTIST CHURCH
LIGHTS ELECTRIC
NEAR STAIRS
12 TO ENTRY

W. BROADWAY

S. 16TH ST.

1A

S. 15TH ST.

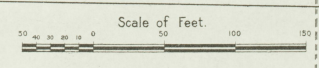
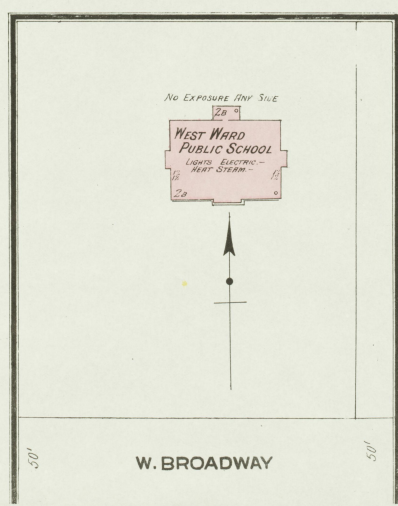
9

W. SOUTH ST.

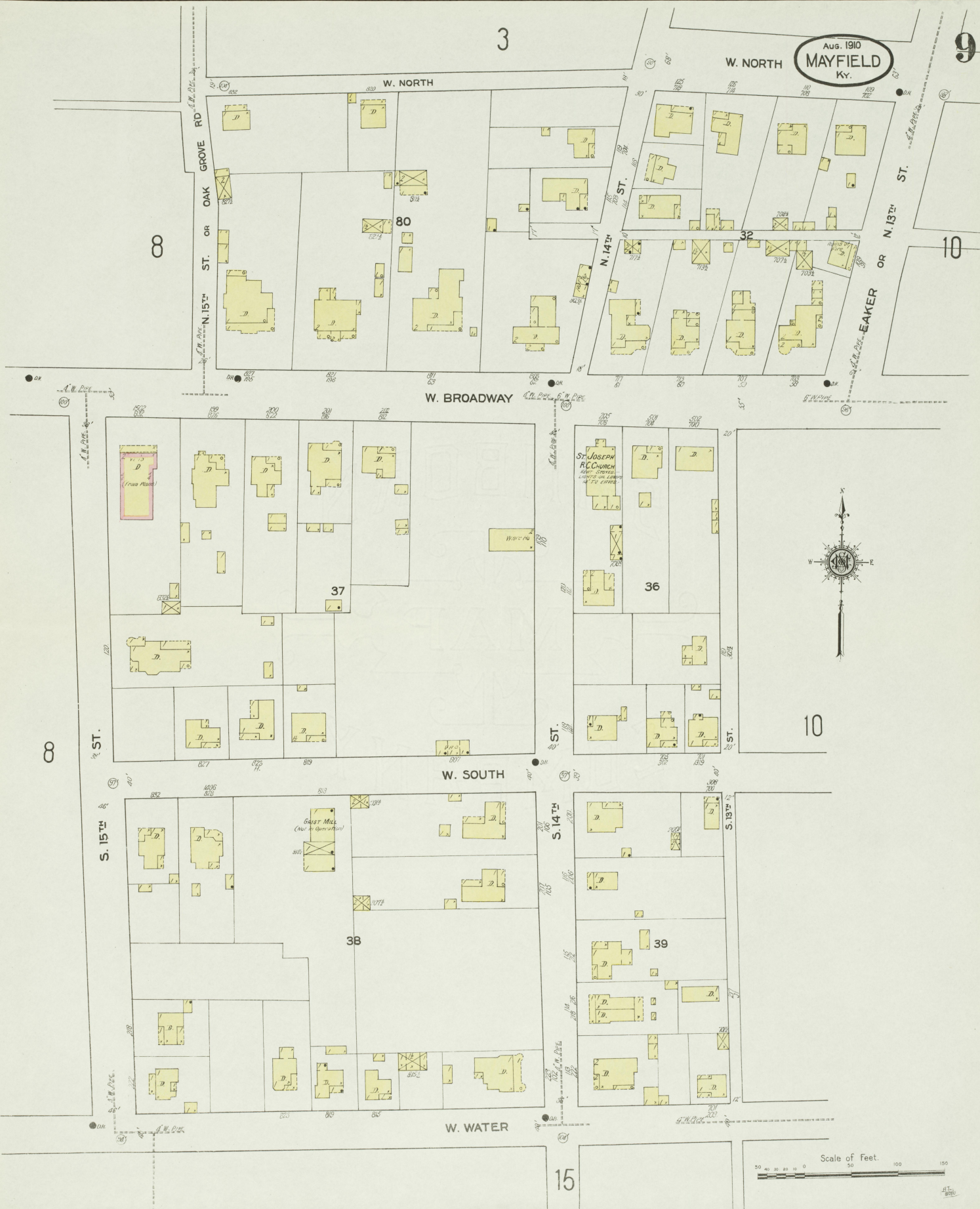
W. WATER

W. WATER

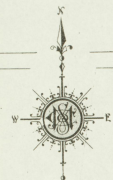
W. BROADWAY



Aug. 1910
MAYFIELD
KY.



Aug 1910
MAYFIELD
Ky.



J.L. SHEARILL
No WATCHMAN - NO FIRE CONNECTION
CORNWELL FEED SPRING AND
HANDOUTS WINDS SPACED
8 FEET WIDE & ROADS
FRONTMAN SQUARE & STAIRS OF
5000 GALLONS LOCATED ON RT
OF BUILDING - 20' CLEARANCE
SOUTH CITY WATER MAINS
AIRWAY PRESSURE 40 LBS

HOUSMAN & WILSON
TOBACCO RE-HANDLING
No WATCHMAN
NO FIRE CONNECTION
NO LIGHT

J.F. BLADCK
TOBACCO RE-HANDLING
No WATCHMAN
NO FIRE CONNECTION
NO LIGHT

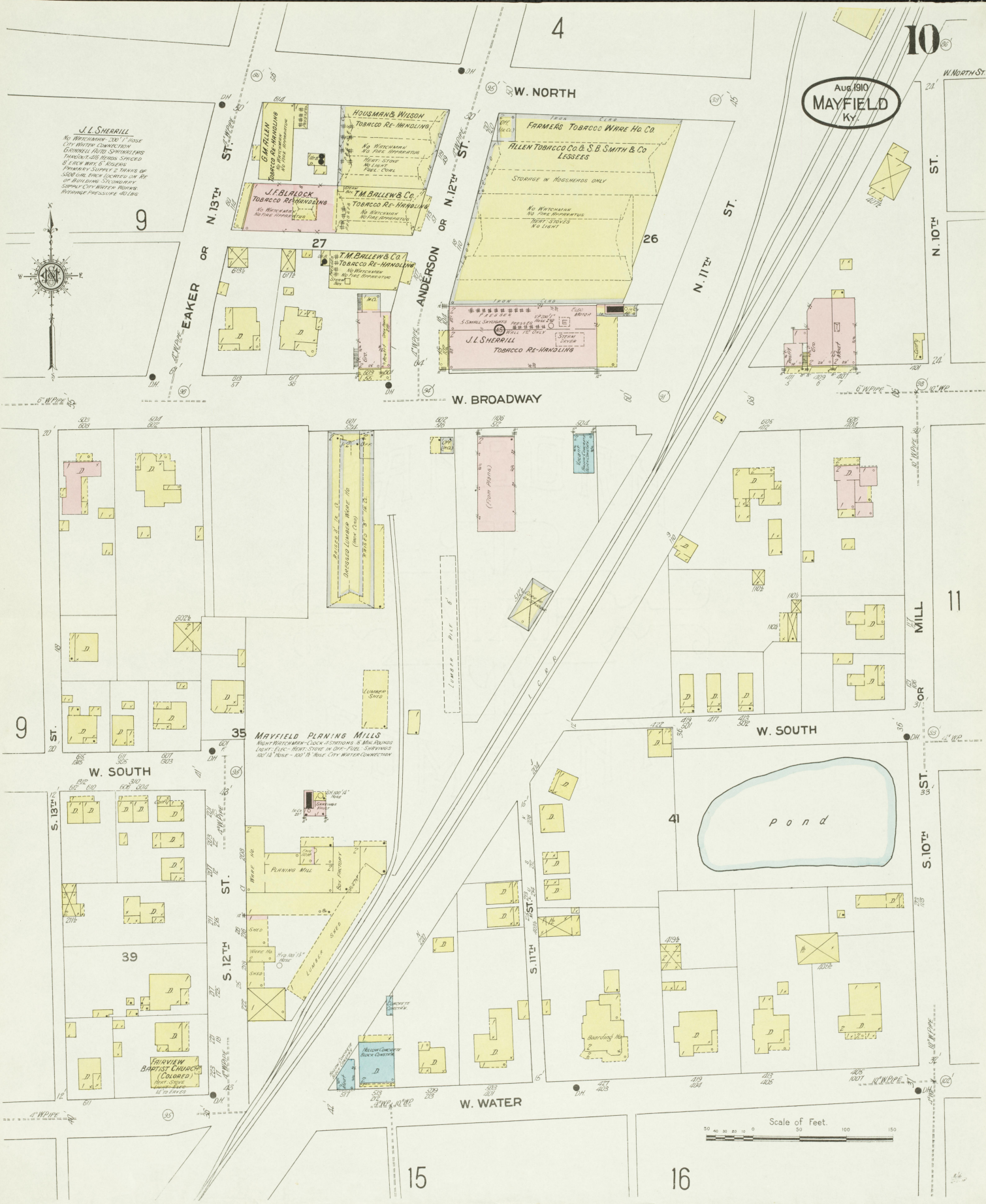
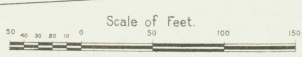
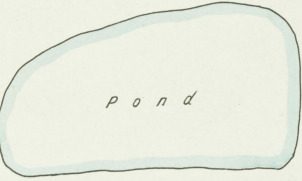
FARMERS TOBACCO WARE HO. CO.
ALLEN TOBACCO CO. & S.B. SMITH & CO
LESSEES
STORAGE IN HOUSHEADS ONLY
No WATCHMAN
NO FIRE CONNECTION
NO LIGHT

T.M. BALLEW & CO.
TOBACCO RE-HANDLING
No WATCHMAN
NO FIRE CONNECTION
NO LIGHT

J.L. SHEARILL
TOBACCO RE-HANDLING
No WATCHMAN
NO FIRE CONNECTION
NO LIGHT

MAYFIELD PLANNING MILLS
NIGHT WATCHMAN - CLOCK STATIONS & MAIL ALARMS
LIGHT SEAS - NIGHT STORE IN DAY - FEEL - CONDUITS
100' 1/2" DIA. - 800' 1/2" DIA. CITY WATER CONNECTION

FARVIEW BAPTIST CHURCH
(COLORED)
Worship
14 to 10 P.M.

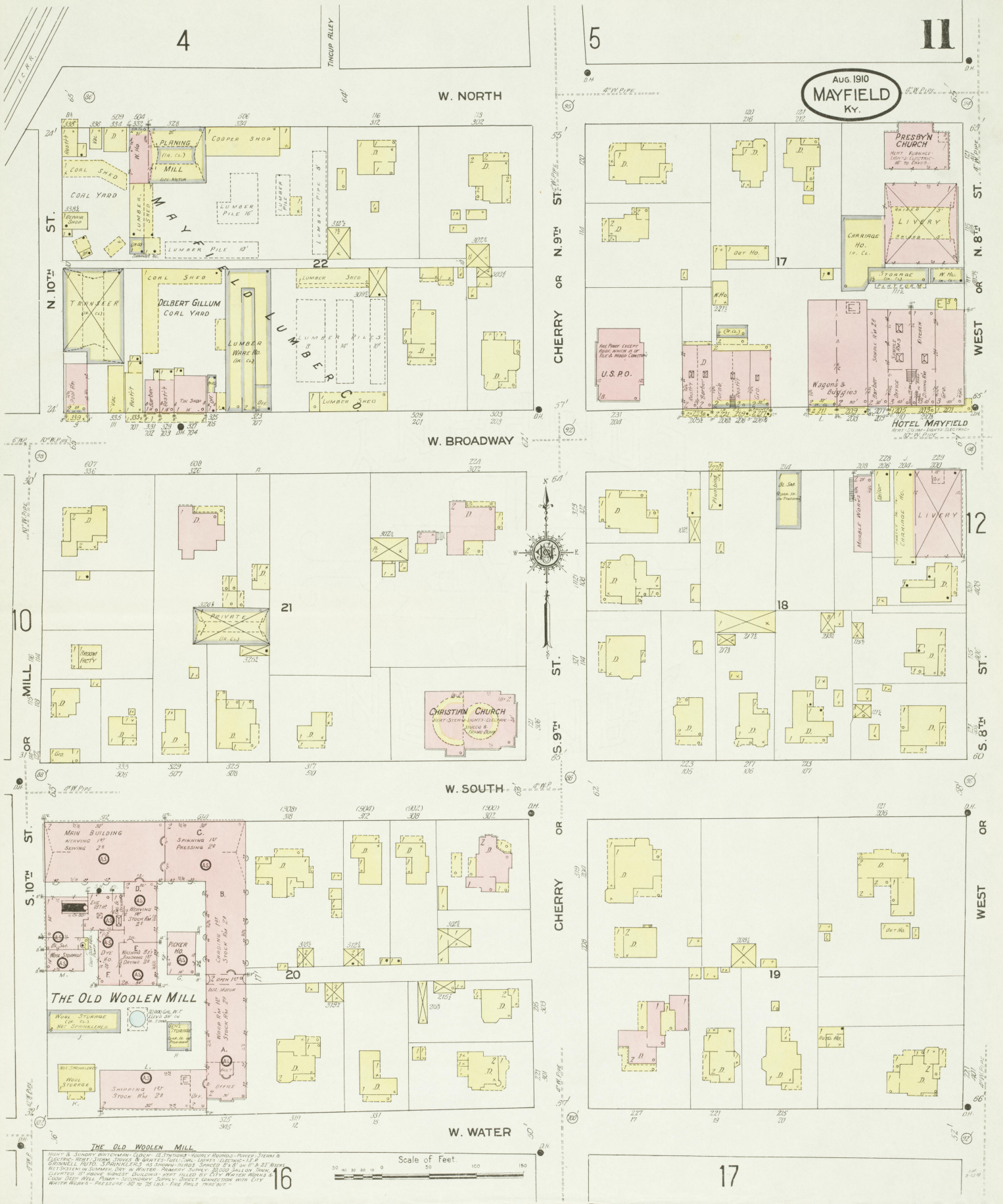


4

5

11

Aug. 1910
MAYFIELD
Ky.



W. NORTH

ST. CHERRY OR N. 9TH

ST. WEST OR N. 8TH

W. BROADWAY

ST. S. 9TH OR S. S. 9TH

ST. WEST OR S. 8TH

W. SOUTH

ST. CHERRY OR S. 10TH

ST. WEST OR S. 10TH

W. WATER

ST. CHERRY OR S. 10TH

ST. WEST OR S. 10TH

Scale of Feet. 100 150

THE OLD WOOLEN MILL

THE OLD WOOLEN MILL

THE OLD WOOLEN MILL

THE OLD WOOLEN MILL

THE OLD WOOLEN MILL

THE OLD WOOLEN MILL

THE OLD WOOLEN MILL

THE OLD WOOLEN MILL

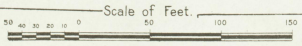
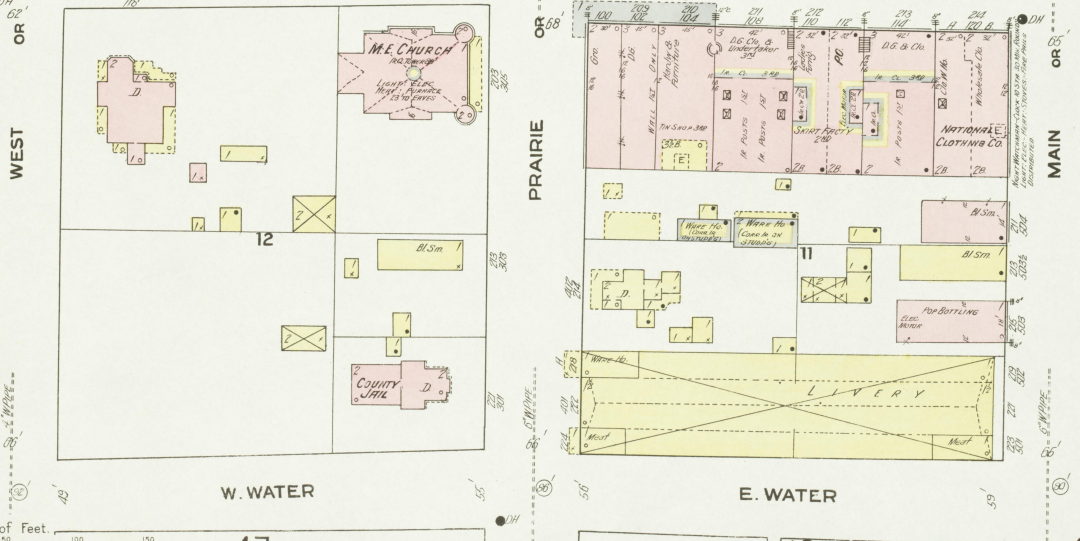
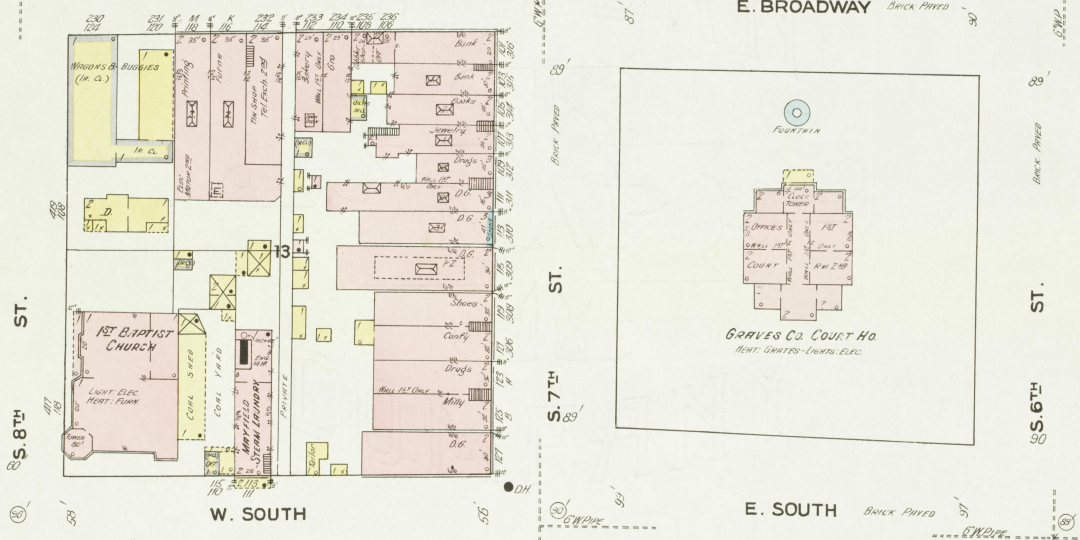
THE OLD WOOLEN MILL

THE OLD WOOLEN MILL

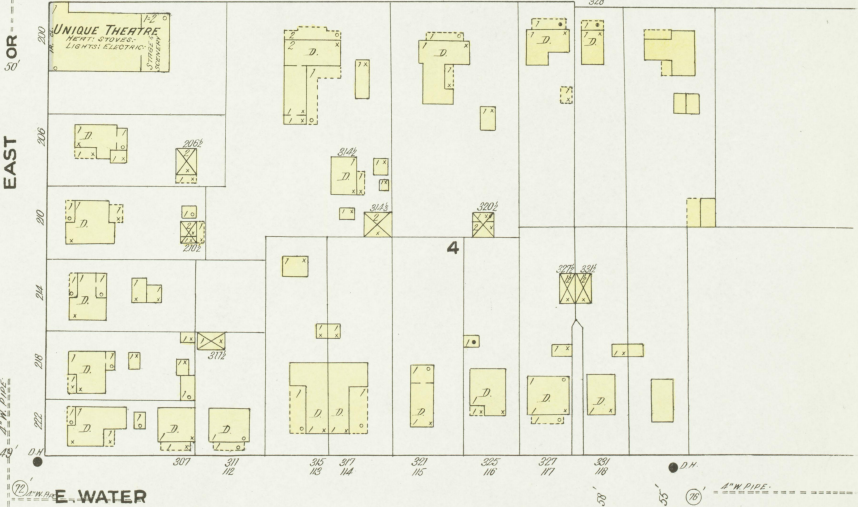
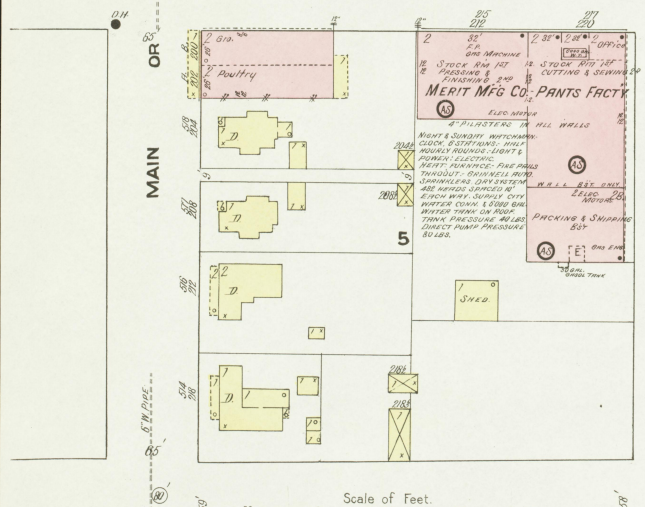
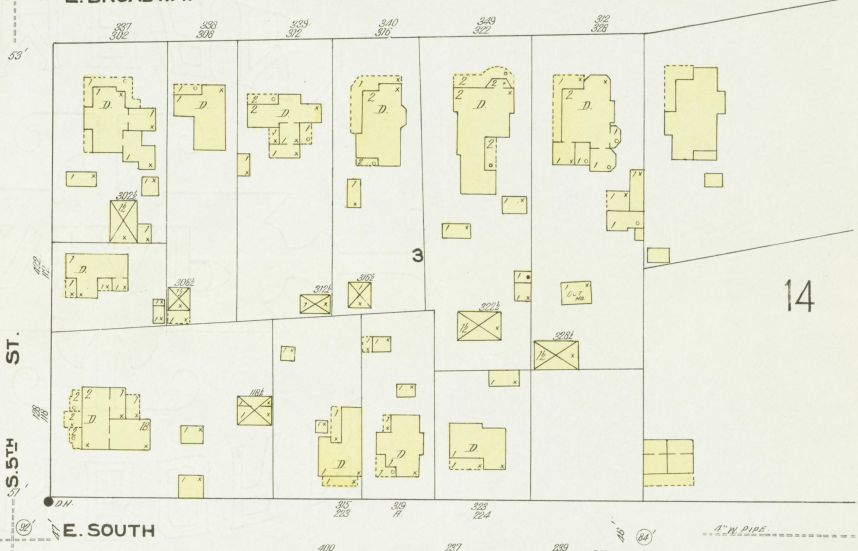
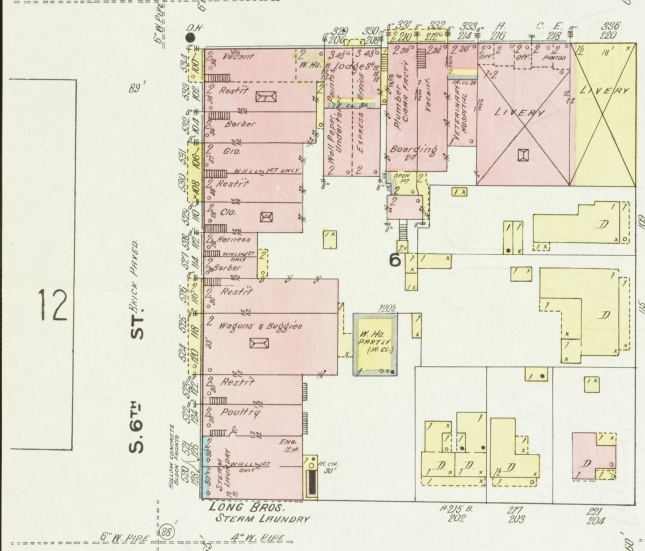
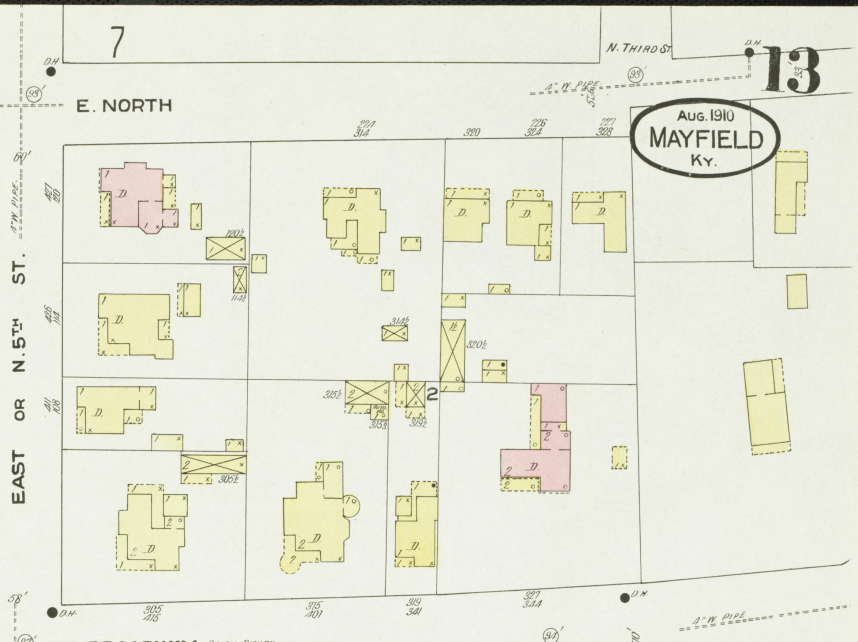
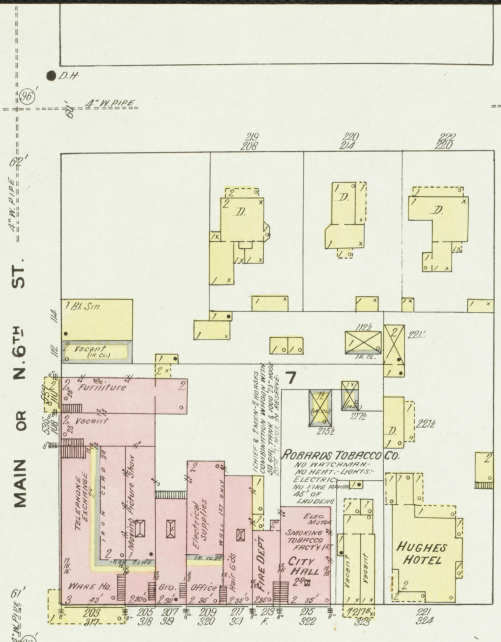
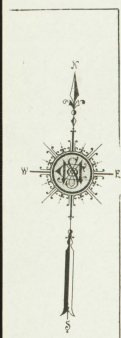
THE OLD WOOLEN MILL

THE OLD WOOLEN MILL

Aug. 1910
MAYFIELD
Ky.

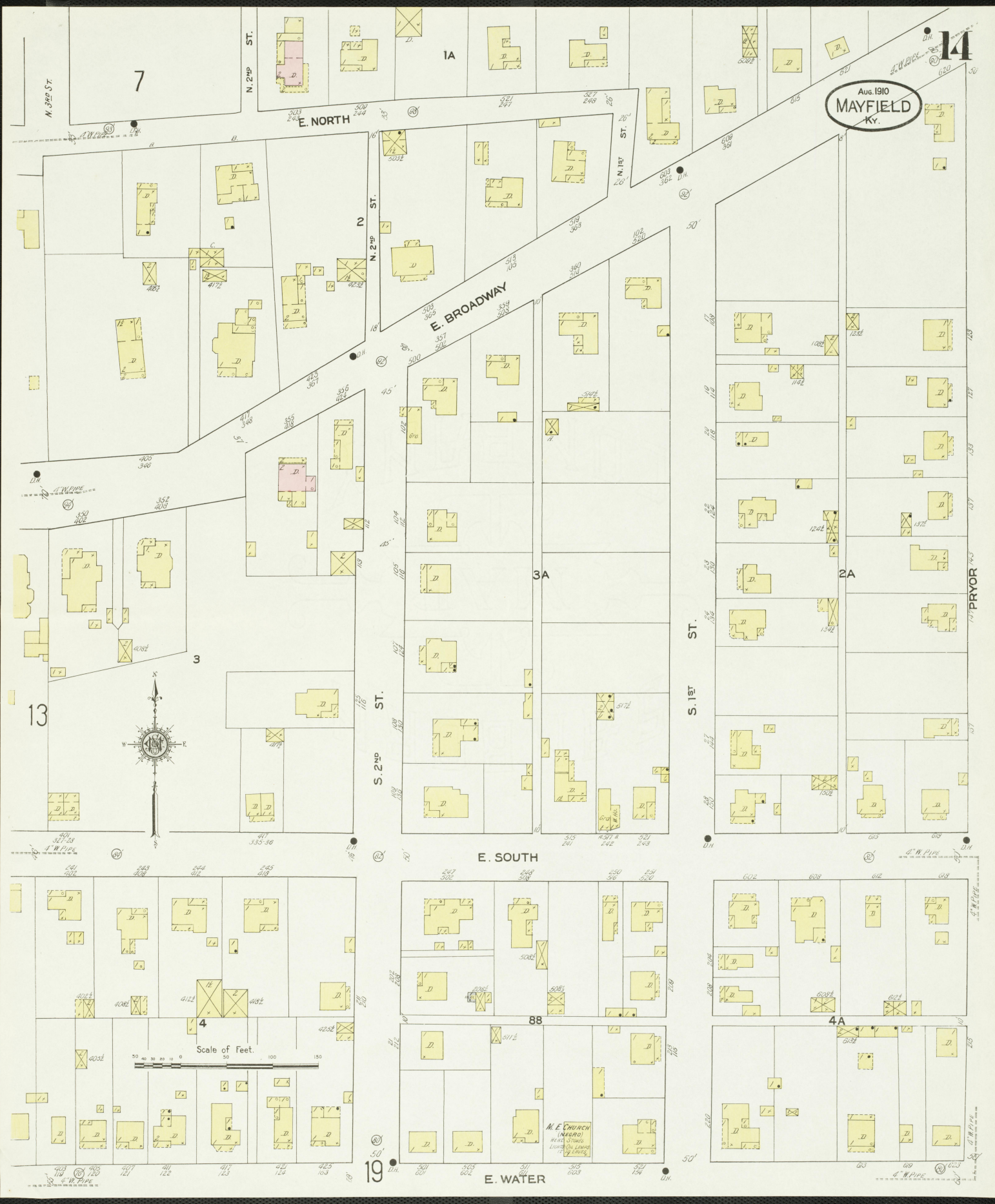


Aug. 1910
MAYFIELD
Ky.



Aug. 1910
MAYFIELD
Ky.

14



E. SOUTH

E. WATER

Scale of Feet.

M. E. CHURCH
(NEGRO)
HEAD STENOGR
LIVING ON LEASE
TO LINDS.



19

13

7

1A

3A

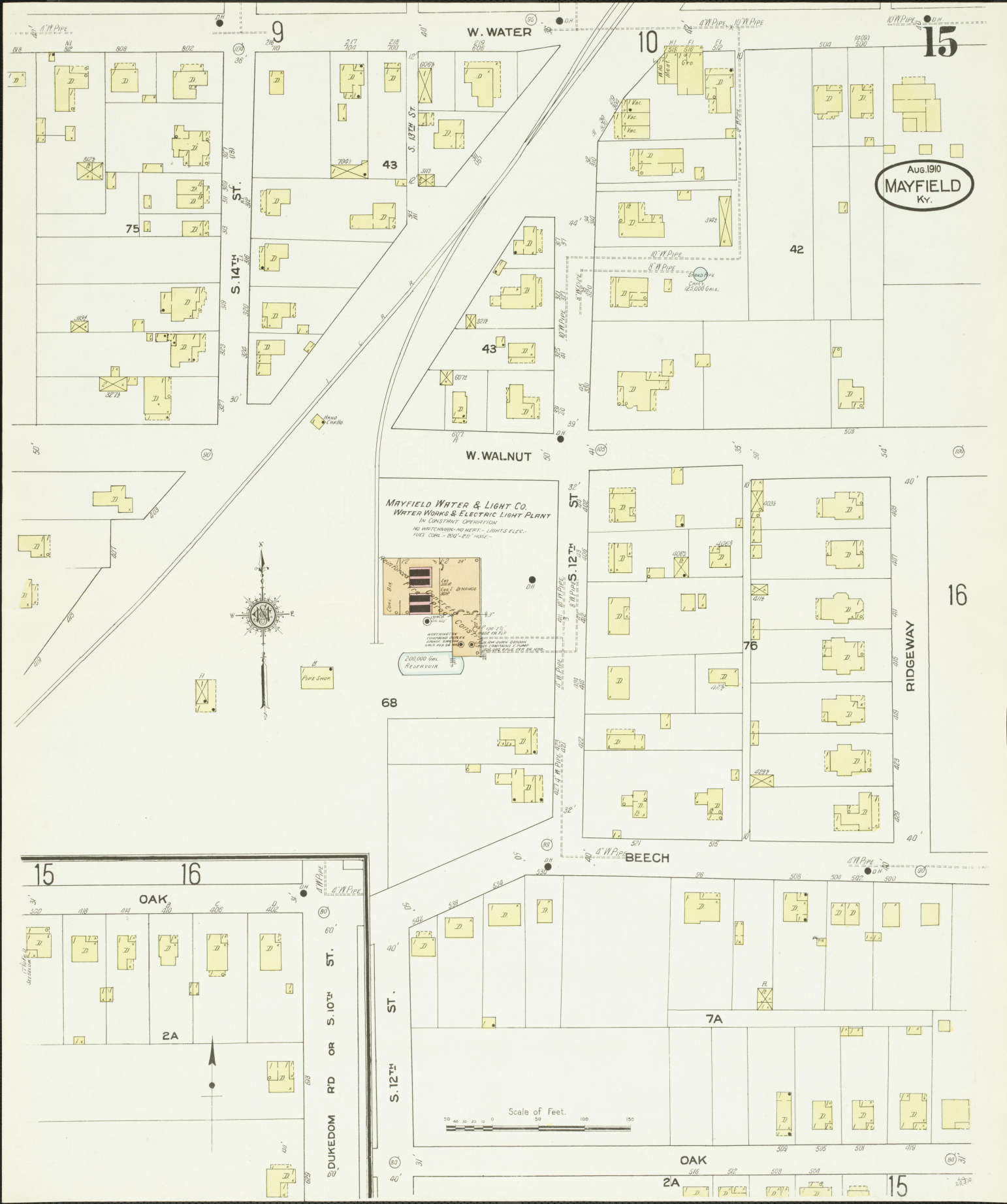
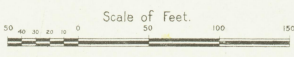
2A

88

4A

Aug. 1910
MAYFIELD
Ky.

MAYFIELD WATER & LIGHT CO.
WATER WORKS & ELECTRIC LIGHT PLANT
IN CONSTANT OPERATION
NO WATCHMEN - NO HEAT - LIGHTS ELEC.
FUEL COAL - BOO - ETC. "HAY"



10

11

16

W. WATER

AUG 1910
MAYFIELD
Ky.

S. 10TH ST. OR MILL

67



W. WALNUT

15

17

RIDGEWAY

S. 10TH ST. OR

CHERRY

76

WILLOW

BEECH

OR

2A

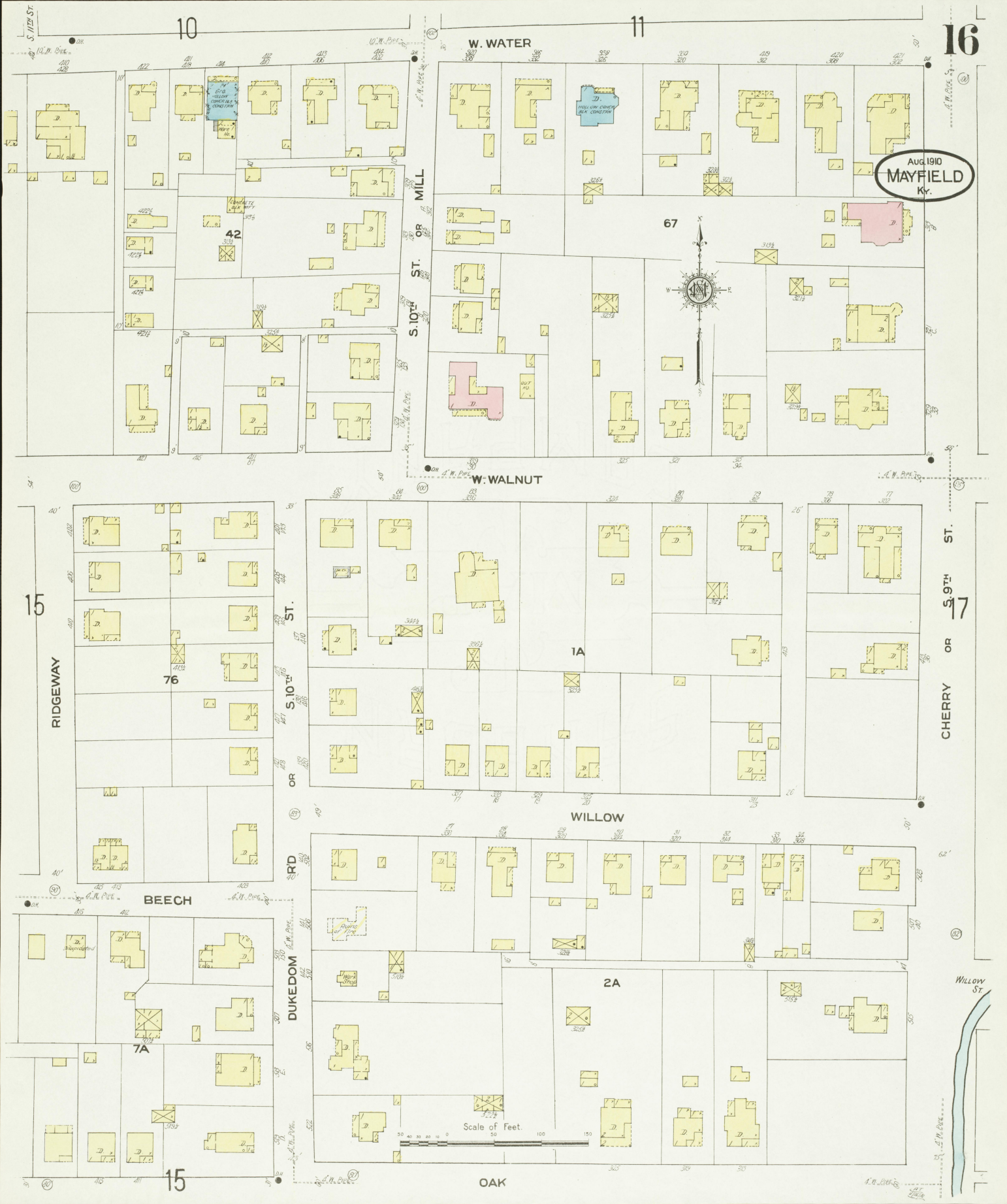
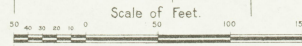
15

OAK

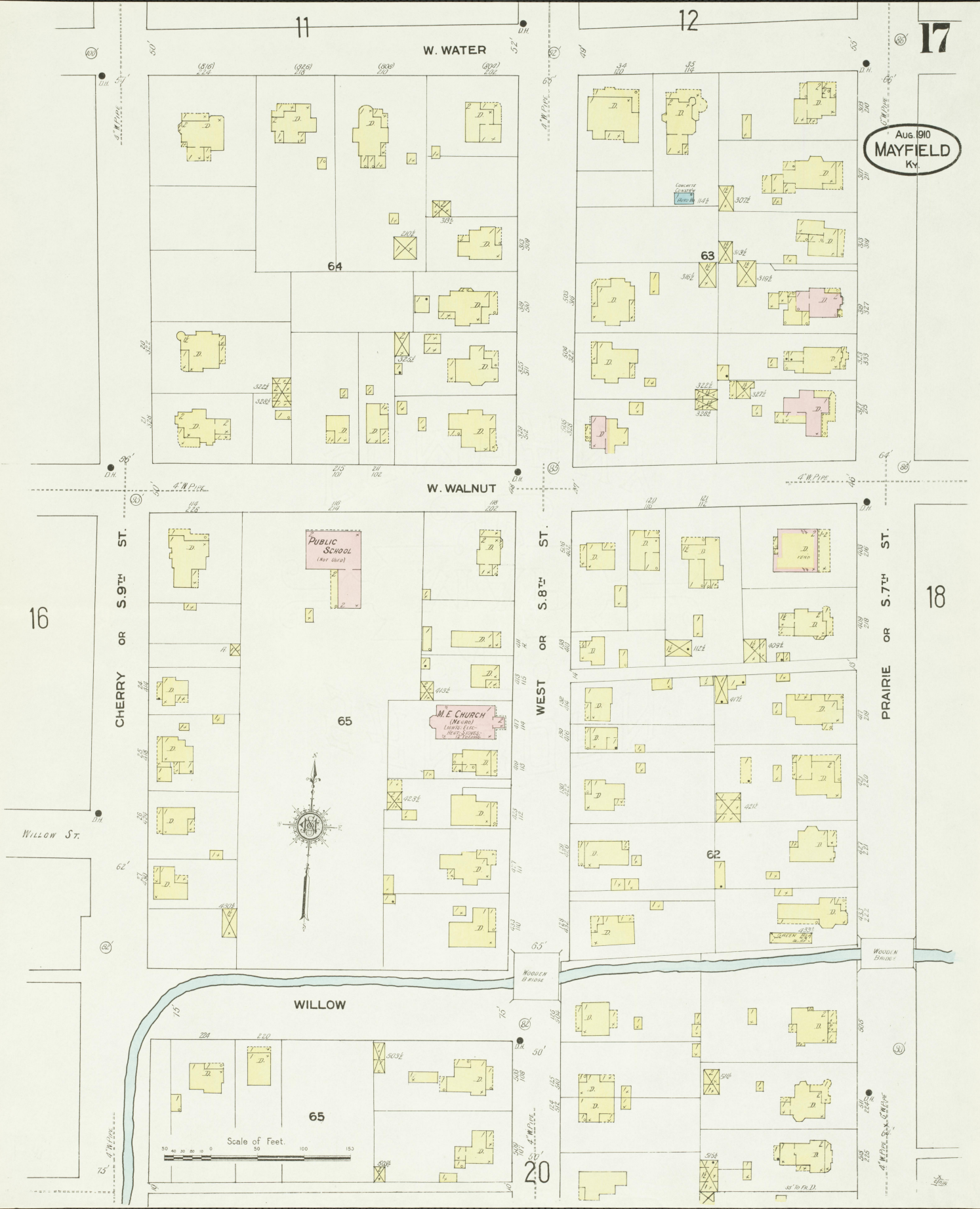
WILLOW ST.

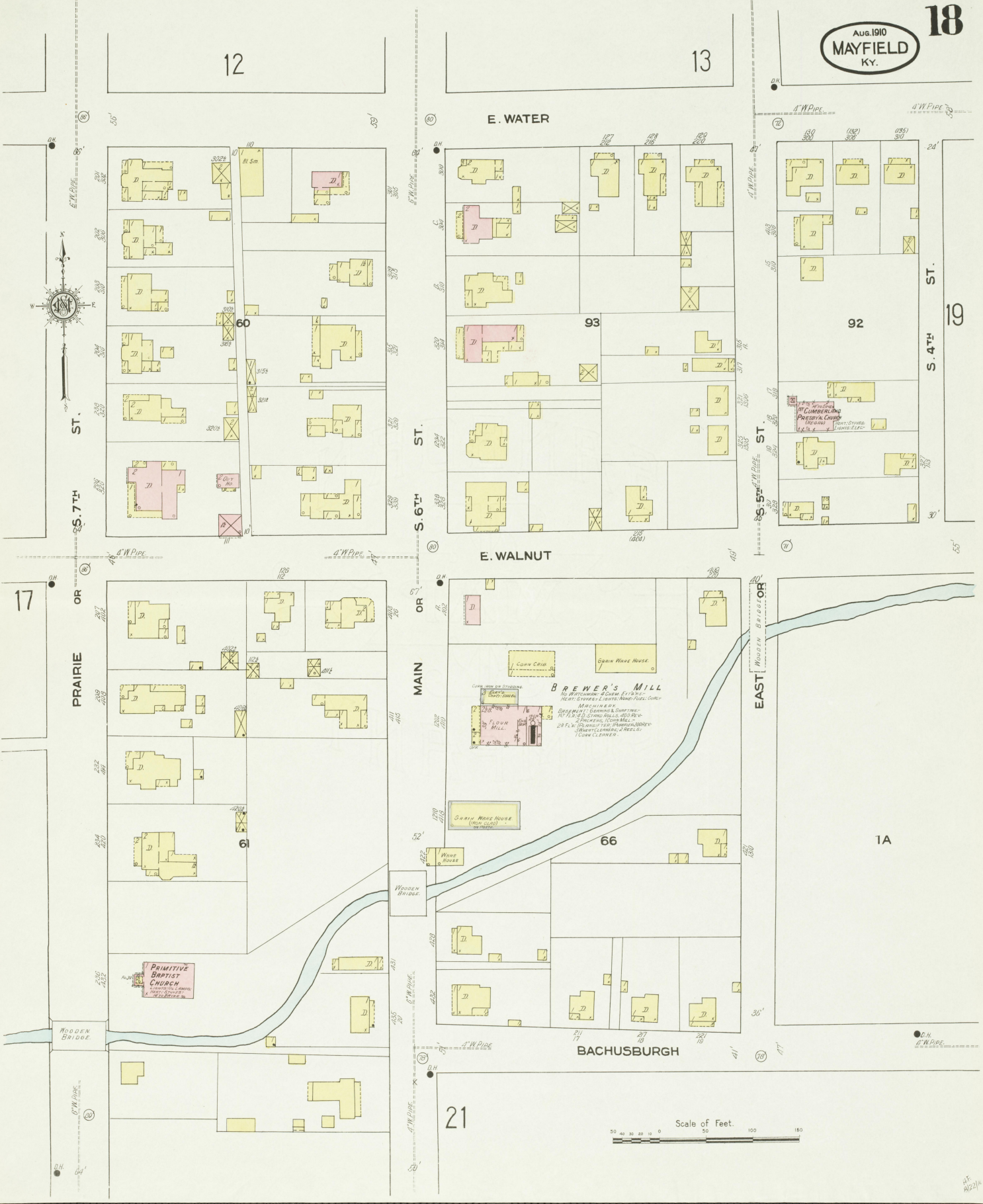
DUKEDOM

Scale of Feet.



Aug. 1910
MAYFIELD
Ky.





21

Scale of Feet.
0 20 40 60 80 100 120 140 160

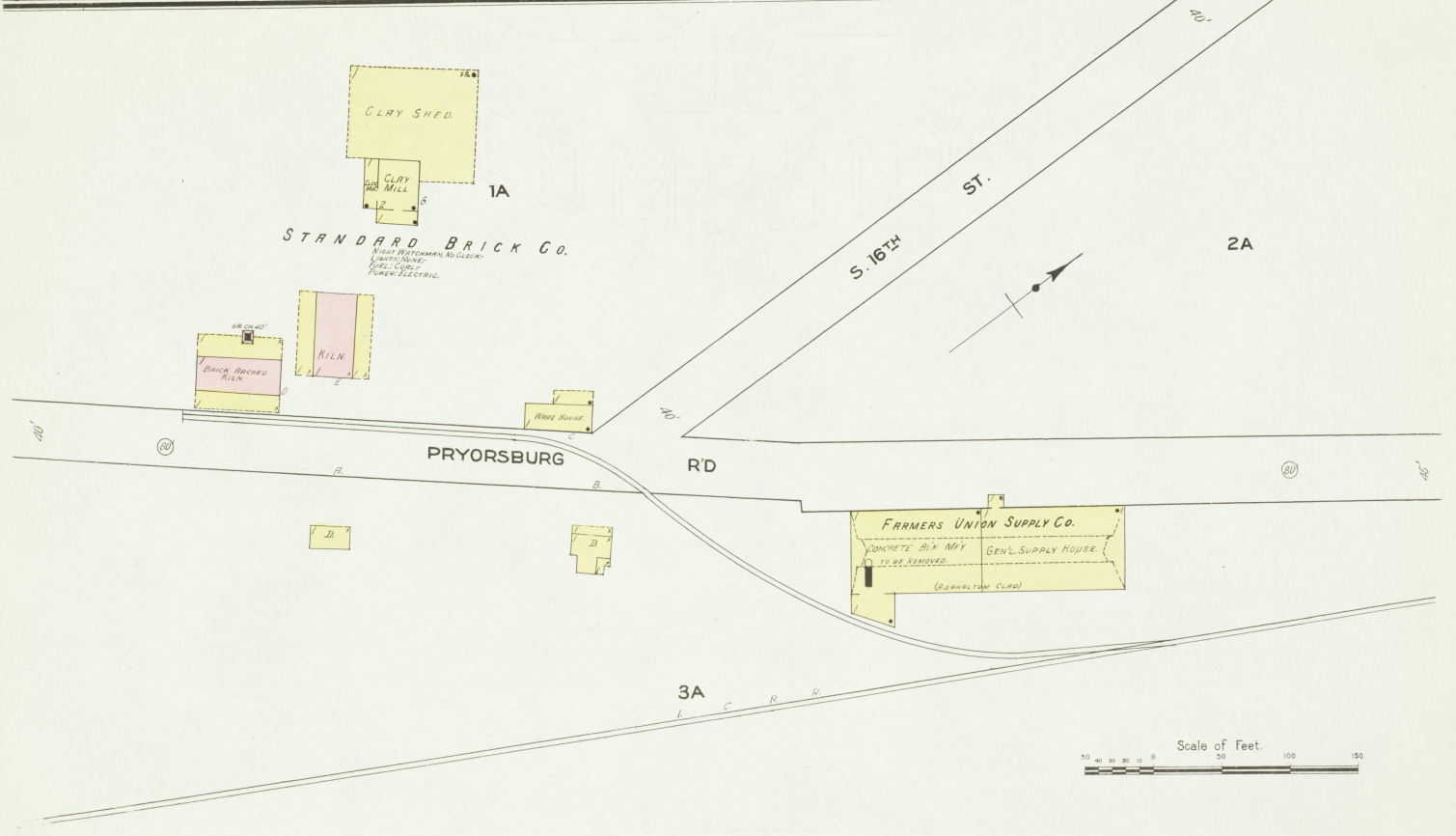
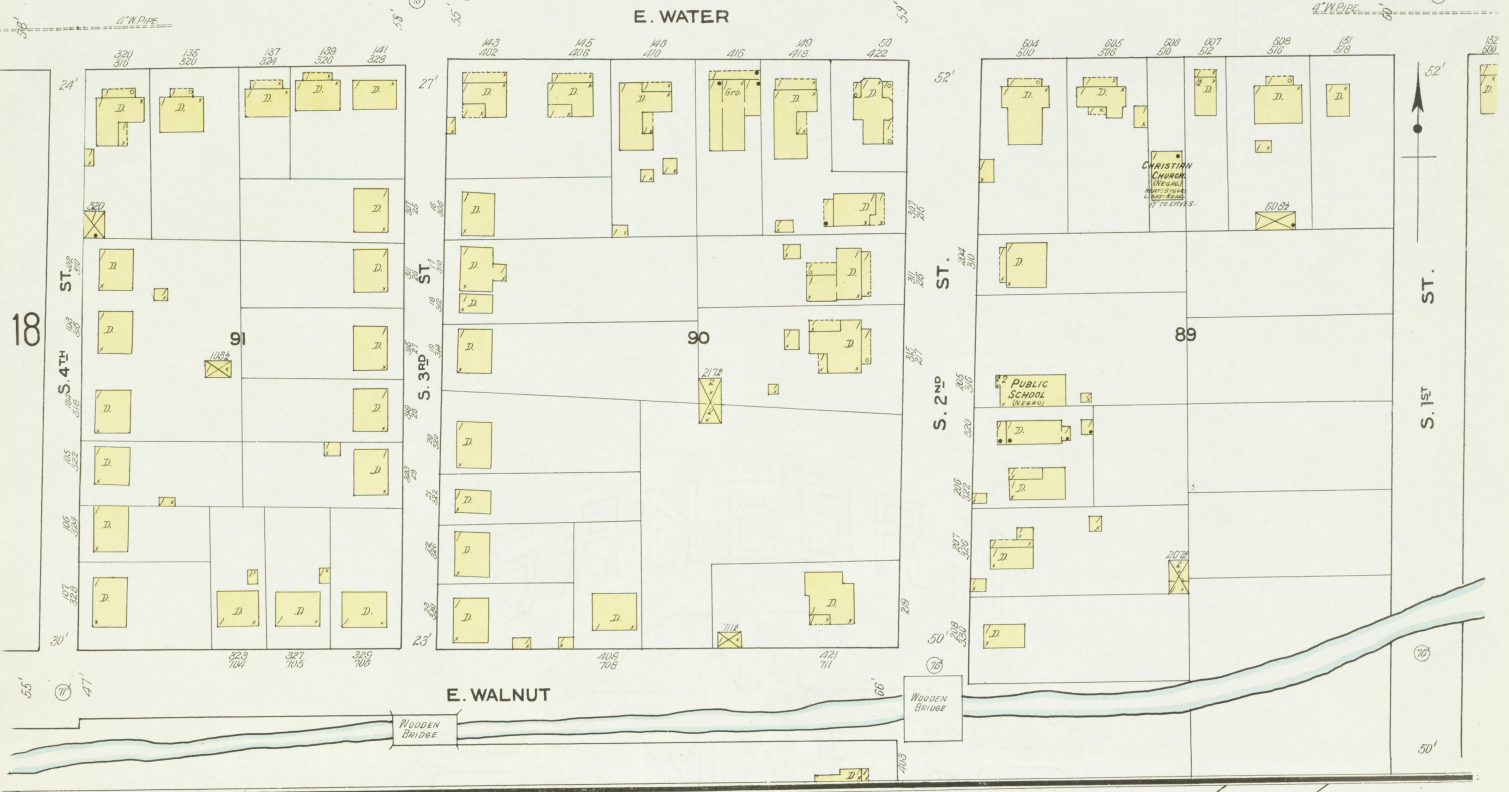
11/2
11/2

13

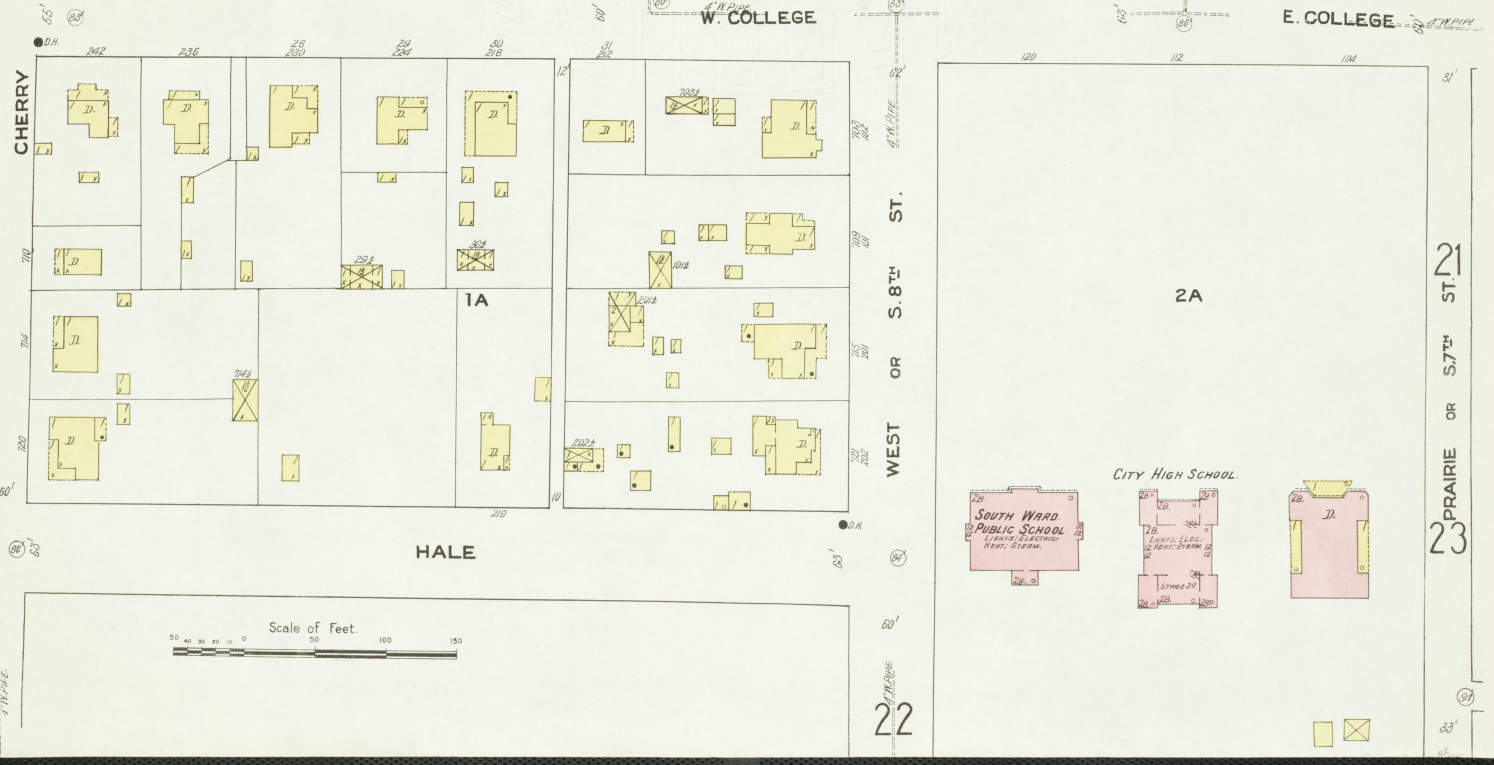
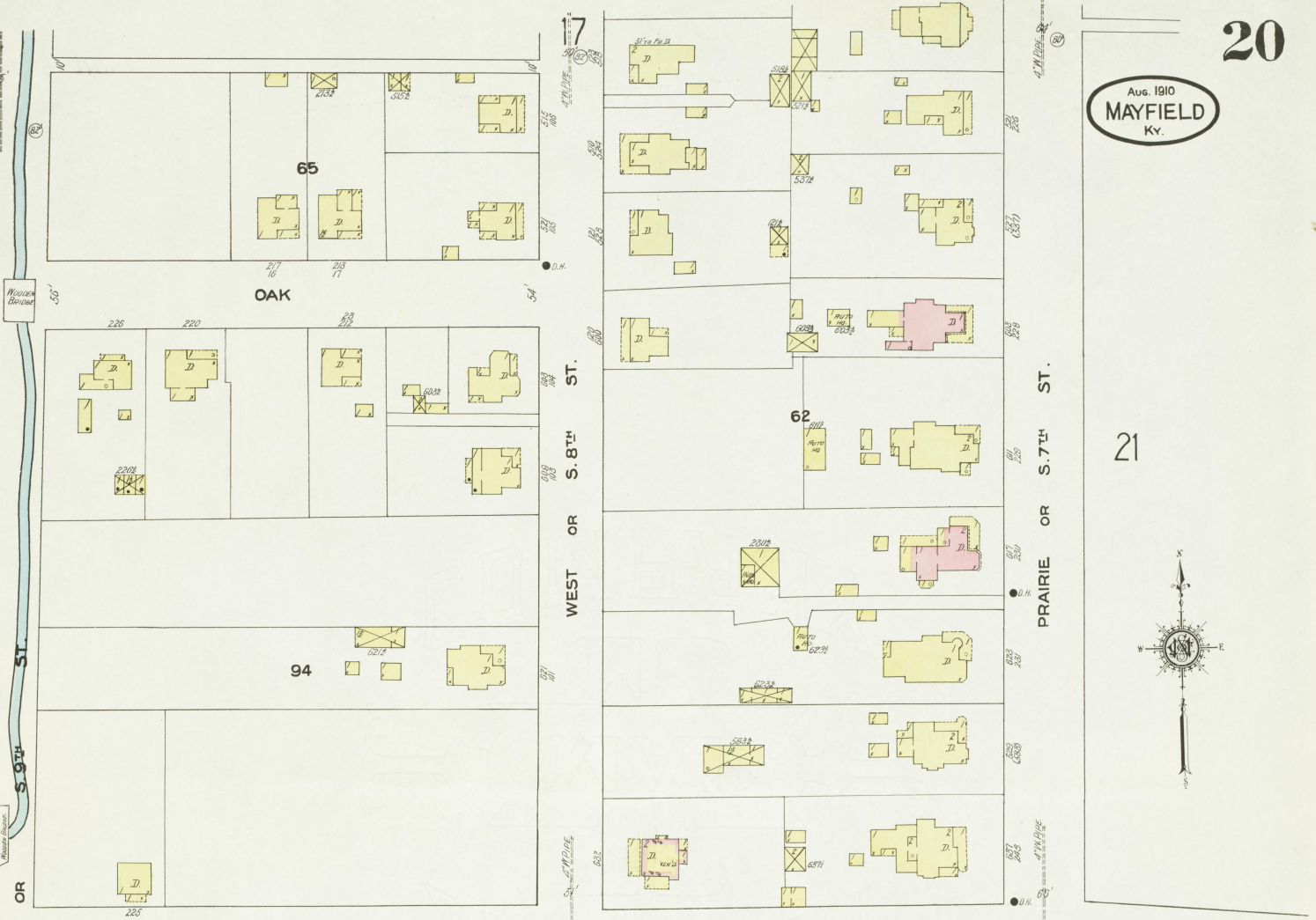
14

AUG 1910
MAYFIELD
KY.

19

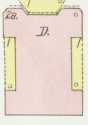


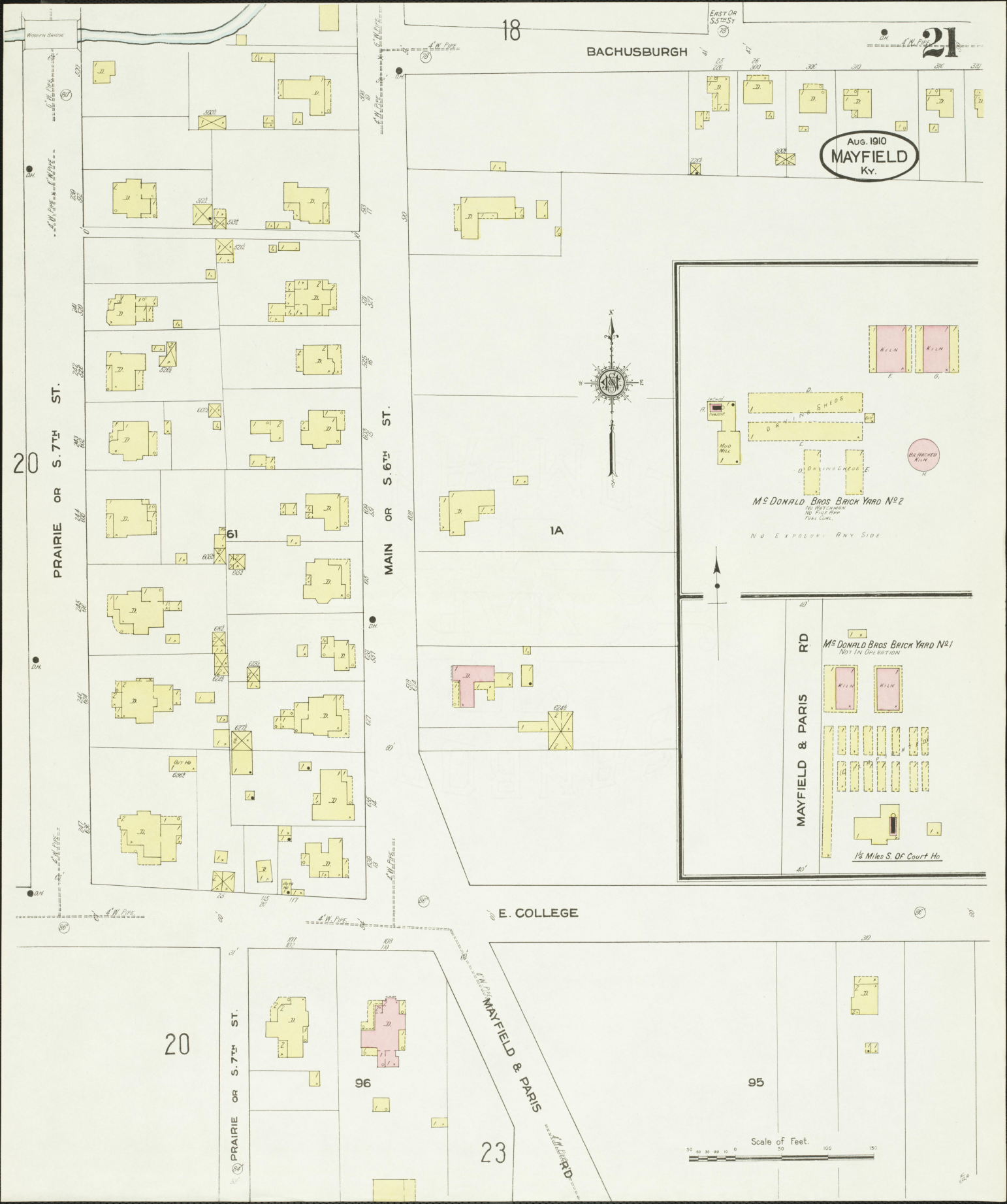
Aug. 1910
MAYFIELD
KY.



SOUTH WARD
PUBLIC SCHOOL
L. HARRIS, ELECTRICIAN
HARRIS, STATIONER

CITY HIGH SCHOOL.





AUG. 1910
MAYFIELD
Ky.

BACHUSBURGH



M^{rs} DONALD BROS BRICK YARD N^o 2
NO 1875 - 1880
NO. 1875 - 1880
PAVEMENT
NO. 1875 - 1880

NO EXPOSURE ANY SIDE

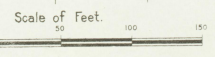
M^{rs} DONALD BROS BRICK YARD N^o 1
NO. 1875 - 1880

MAYFIELD & PARIS
RD

1/2 Miles S. OF Court Ho.

E. COLLEGE

23



PRAIRIE OR S. 7TH ST.

MAYFIELD & PARIS

PRAIRIE OR S. 7TH ST.

MAIN OR S. 6TH ST.

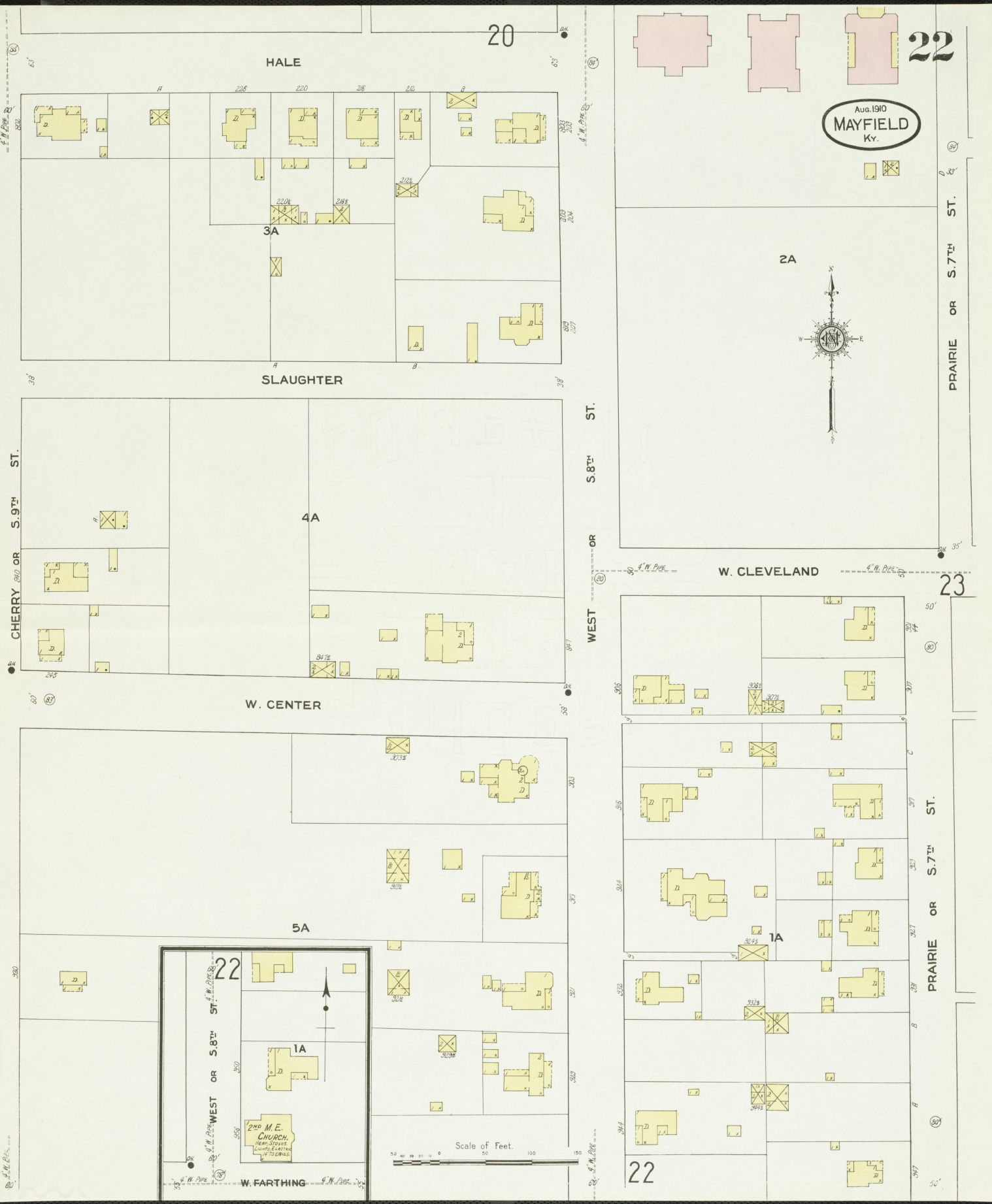
20

96

95

18

21



20

22

HALE

Aug. 1910
MAYFIELD
Ky.

3A

2A

SLAUGHTER

CHERRY 1910 OR S. 9TH ST.

WEST OR S. 8TH ST.

W. CLEVELAND

23

W. CENTER

PRAIRIE OR S. 7TH ST.

5A

22

1A

240 M. E. CHURCH
Henry Street
Landing 4.66770
1877-1894

Scale of Feet.
0 50 100 150

W. FARTHING

22

20

95

21

PRAIRIE OR S. 7TH ST.

JONES

FRANK McLAIN
TOBACCO REFINNING

MAYFIELD & PARIS
RD



22

E. CLEVELAND

ST.

MAIN OR S. 6TH ST.

PRAIRIE OR S. 7TH ST.

EAST OR S. 5TH ST.

2A

3A

Scale of Feet

