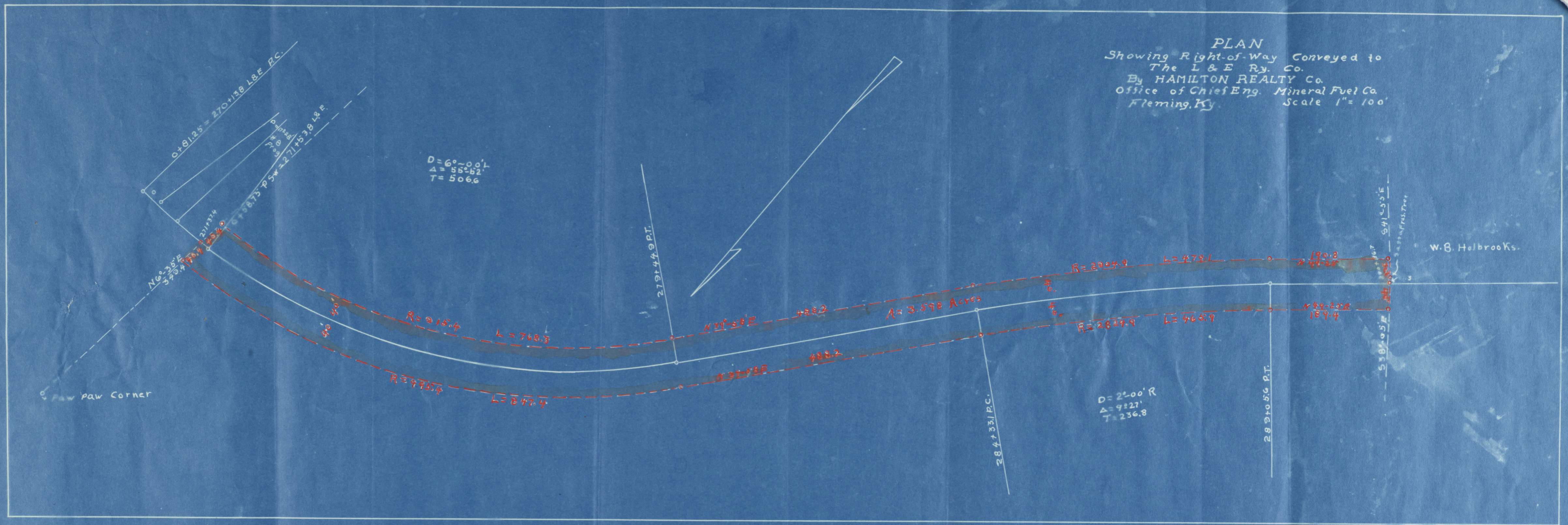


PLAN
 Showing Right-of-Way Conveyed to
 The L & E Ry. Co.
 By HAMILTON REALTY Co.
 Office of Chief Eng. Mineral Fuel Co.
 Fleming, Ky. Scale 1" = 100'



Beginning at station 271+37.4 on \pm of Potters Fork Spur of L & E. R.R. and on Property line of Hamilton Realty Co. and Mineral Fuel Co. $S 6^{\circ}-35' W$ 349.4 from a corner on said property line marked by a paw paw tree. Thence $S 6^{\circ}-35' W$ 40.4 ft. Thence keeping 40 ft. from \pm of said R.R. by curve to left $R=915.4'$ distance of 768.3' to a point opposite sta. 279.+44.9 P.T. on \pm of said R.R. Thence $S 39^{\circ}-58' W$ 488.2'. Thence by curve to right $R=2904.9'$ distance of 479.1. Thence $S 49^{\circ}-25' W$ 190.8' to point of intersection of line with property line of W.B. Holbrooks and Hamilton Realty Co. Thence $N 41-55 W$ 30.7' line to a point. Thence, keeping 40' from \pm of said R.R. $N 49-25 E$ 189.4; Thence by curve to left $R=2824.9'$ distance of 465.9; Thence $N 39-58 E$ 488.2'. Thence by curve to Right $R=995.4'$ distance of 847.4' to intersection of this line with Property line of Hamilton Realty Co. and Mineral Fuel Co. and thence $S 6^{\circ}-35' W$ 40.4' to point of beginning containing 3.598 Acres.

ETP RAM