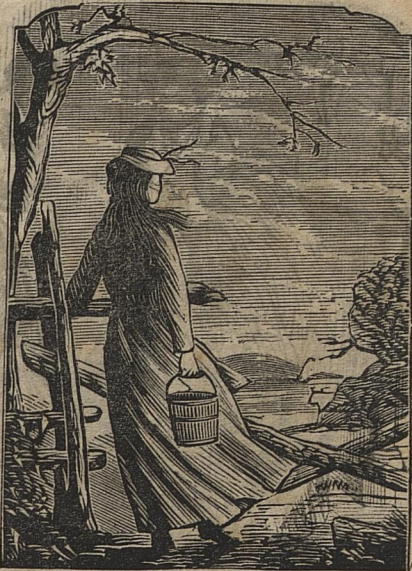


A VISIT TO THE CITY, OR Pride Must Have a Fall.

A COMIC POEM, ILLUSTRATED.

John Pinchback lived on Muscatine Hill,
The upper-crust among,
He had a healthy bank account,
His wife was fair and young—
He'd earned a handsome competence
By selling hides and leather—
His head was level and his heart
As light as any feather.



But John's wife, pretty though she was,
And sociable and free, and W
Was fond of taking on French airs,
When in society, sent to Wood A
To see the lady in her silks and II
And diamonds arrayed, and sdt
'Twas hard to b'lieve she once had been
A simple dairy maid, sdt so m'y

Call and see our CHEAP CROQUET!

"GOING AROUND THE WORLD."

HOW THEY GO.

THE average modern American tourist of the present age with a liberal balance at his banker's who has done Europe and the Continent repeatedly, is now satisfied with nothing less than a trip around the world. To such the following table will be found quite interesting as showing the route taken to complete the circuit, the distance traveled, the different connecting Railway and Steamer Lines, and time required to make the trip. If leaving New York city, step into the Chicago, Rock Island & Pacific R. R. Office, No. 257 Broadway, and purchase your ticket to Hong Kong over any of the through lines centering at Chicago. Between Chicago and Omaha you pass over the most perfectly constructed and equipped Railway in the United States. West of Omaha you pass over the two great Pacific Railways arriving at San Francisco.

ROUTE.	DISTANCE MILES.	TIME. DAYS.
Across the Continent, N. York to San Francisco.....	3,320	7
San Francisco to Hong Kong, via Pacific Mail Line Steamers.....	6,834	32
Hong Kong to Calcutta, via Peninsular & Oriental S.S. Line.....	3,500	14
Calcutta to Bombay, via Great Indian Peninsular Railway.....	1,472	2
Bombay to Marseilles, via P. & O. Steamers through Suez Canal, or via Egyptian Railway through Cairo.....	3,500	19
Marseilles to Havre, via French Railway.....	575	30 h.
Havre to New York, via any of the Ocean Steamer Lines.....	3,150	10
Total.....about	24,351	Ab't 85 d

When arriving at New York the tourist has made the entire circuit of the Globe north of the Equator.

The best time to leave the States is during the fall months, they then pass through the low latitudes near the Equator during the winter months, avoiding entirely the intensely cold weather incident to this climate, and the extreme heat of the summer months in the Indian Ocean.

The Fare for the entire trip will not exceed \$1,600 currency.

Chicago, Rock Island & Pacific Railroad TIME TABLE

BETWEEN

CHICAGO and SAN FRANCISCO.

LEAVE CHICAGO AT 10:15 A. M.	ARRIVE AT OMAHA 10:00 A. M.	ARRIVE AT DENVER 6:30 P. M.	ARRIVE AT S. LAKE 7:30 P. M.	ARRIVE AT SACRAMO 2:20 P. M.	ARRIVE AT S. FRANC. 8:45 P. M.
Sunday,	Monday,	Tuesday,	Wednesd.	Friday,	Friday,
Monday,	Tuesday,	Wednesd.	Thursday	Saturday,	Saturday,
Tuesday,	Wednesd.	Thursday	Friday,	Sunday,	Sunday,
Wednesd.	Thursday	Friday,	Saturday,	Monday,	Monday,
Thursday	Friday,	Saturday,	Sunday,	Tuesday,	Tuesday,
Friday,	Saturday,	Sunday,	Monday,	Wednesd.	Wednesd
Saturday,	Sunday,	Monday,	Tuesday,	Thursday	Thursday

FACTS.

The longest steamer route in the world is between San Francisco and Yokohama—22 days without landing. Steamer consumes 3,000 tons of coal during the round trip between San Francisco and Hong Kong. The average expense of steamer for round trip is \$100,000 gold.

The highest altitude reached by any railway is at the Andes Tunnel, between Lima and Oroya, 15,000 feet above tide water. Tunnel 3,000 feet long.

The steepest continuous grade known, where cog wheels are not used, is on the Mexico & Vera Cruz R. R., recently completed—204 feet to the mile for 18 miles.

THE OLD RELIABLE BETWEEN

Kansas, Nebraska, Colorado & California,

IS THE

Rock Island Route.