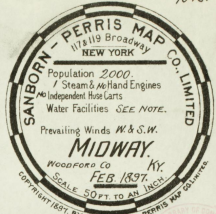
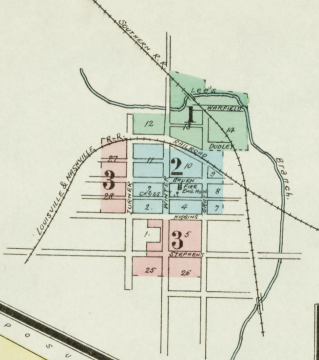


# INDEX.

| SPECIALS.                         | NO. | NO.                                      |   |
|-----------------------------------|-----|--|---|
| A. M. E. Church, A                | 1   | Louisville & Nashville R. R. Depot, L    | 2 |
| Baptist Church, B                 | 2   | Martin, H. Grain & Heavy Warehouse, M    | 1 |
| Colored, C                        | 1   | Masonic Temple Hotel, M                  | 1 |
| Brahan Hotel, B                   | 1   | Midway Elevator, M                       | 1 |
| Christian Church, C               | 2   | Porter House, P                          | 2 |
| Cogan & Co., Tobacco Warehouse, C | 1   | Presbyterian Church, P                   | 1 |
| Collins Opera House, C            | 1   | Public School, P                         | 1 |
| Count & Slave, Wagon Shop, C      | 1   | Starks, E. S., Tobacco Warehouse, S      | 3 |
| Greenbaum, S. J., Distillery, G   | 1   | Steel, W. J., Tobacco Warehouse, S       | 1 |
| Greenbaum, S. J., Distillery, G   | 1   | Wilson, D. H., Tobacco Warehouse, W      | 1 |
| Kentucky Female Orphan School, K  | 3   | Wrisenberger, T. J., Grain, Coal, &c., W | 1 |

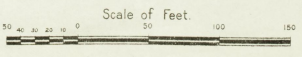


NOTE:  
WATER FACILITIES, 4 PUBLIC CISTERNS & LEE'S BRANCH.  
FIRE DEPT. VOLUNTEER COMPANY OF 15 MEN, WHO ARE PAID FOR ACTUAL SERVICES - 1 BROWN'S STEAM FIRE-ENG. 1 TWO WHEEL HAND HOSE REEL. 1 HAND OPERATED CANTON HOSE. ABOUT 40 LADDERS. NO H.A. TRUCK.



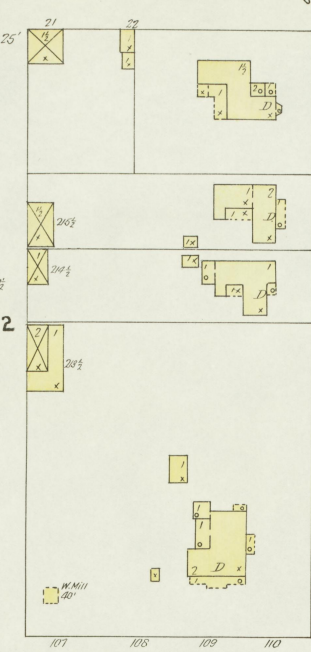
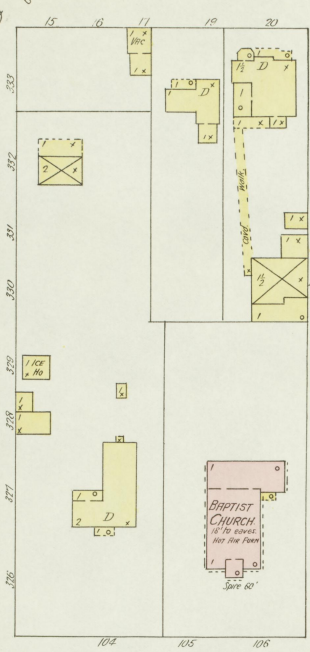
**KEY**

|   |                                    |
|---|------------------------------------|
| — | FIRE WALL 6 IN AS 1/2 IN           |
| — | CONCRETE WALL                      |
| — | FRAME PARTITION                    |
| — | STEEL                              |
| — | SPRING & NON DOOR                  |
| — | WINDOWS - SHOOTERS                 |
| — | STEEL                              |
| — | WINDOW IN 1/2 STORY                |
| — | STEEL                              |
| — | 2 1/2 x 4 x 4                      |
| — | WOOD COLORED YELLOW AND FRAME      |
| — | RED BRICK                          |
| — | BLUE STONE                         |
| — | BROWN IRON                         |
| — | BROWN ASBESTOS                     |
| — | GREEN BRICK                        |
| — | MARKED IS AN ICE CUP USED          |
| — | ALTERNATE STREET NOS ARE ACTUAL    |
| — | BROKEN LINE NEAR BLDG WOOD CORNICE |
| — | SOLID METAL                        |

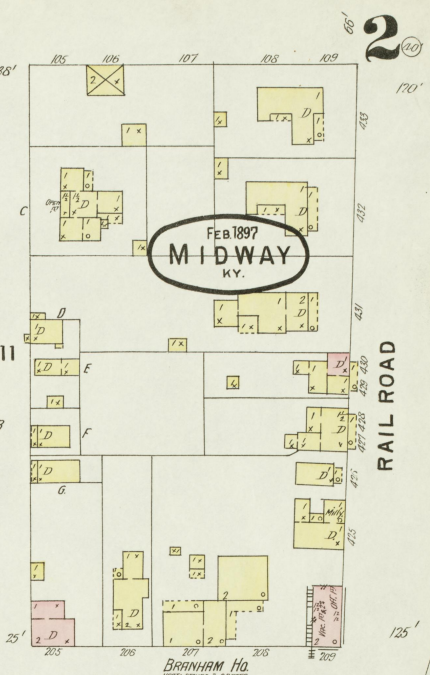
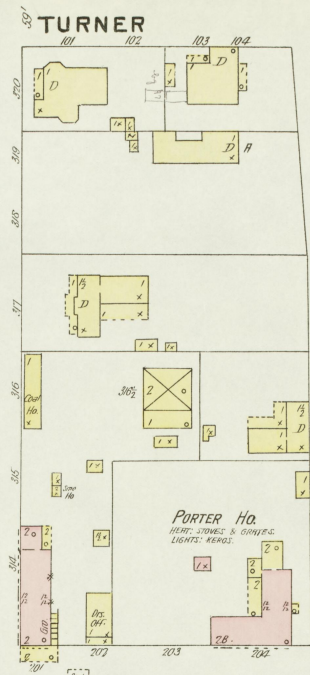




Well & Pump  
64.1'

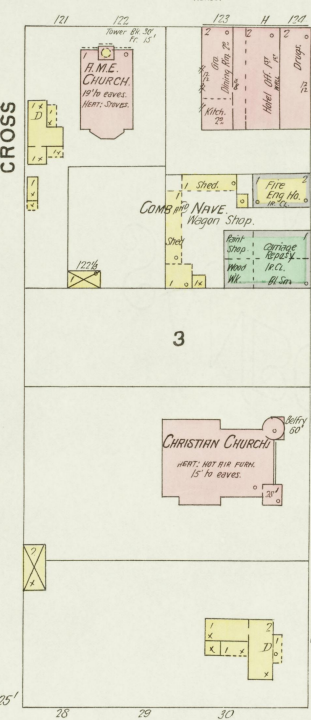
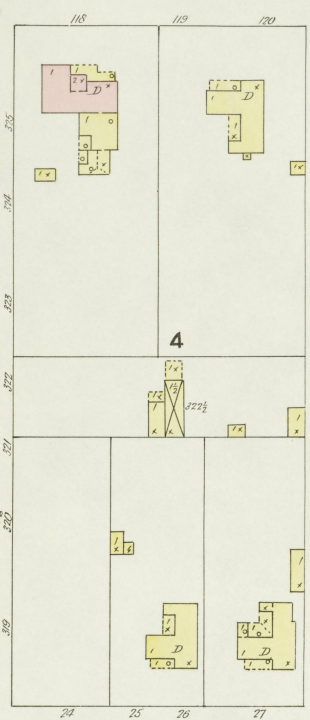


3 64.1'

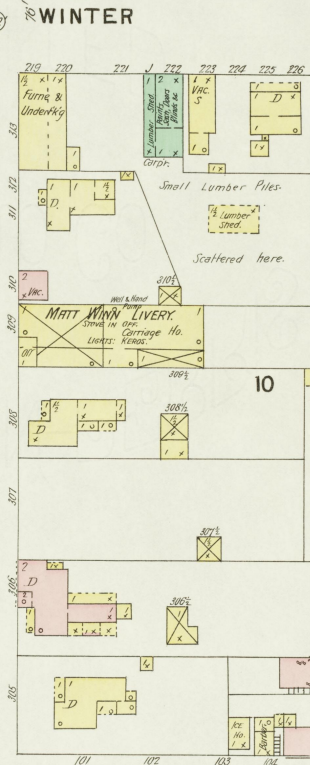


2 66'

40'

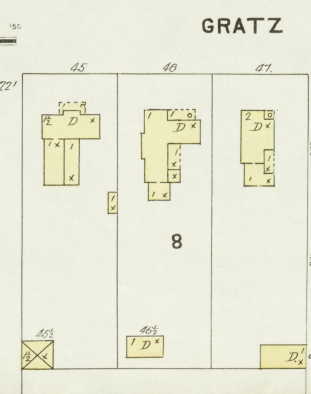
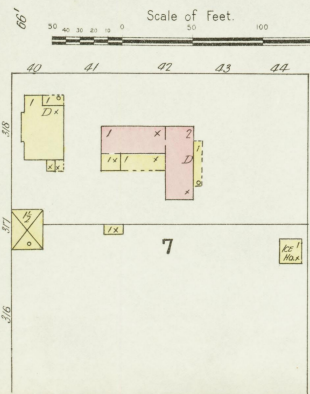


30'

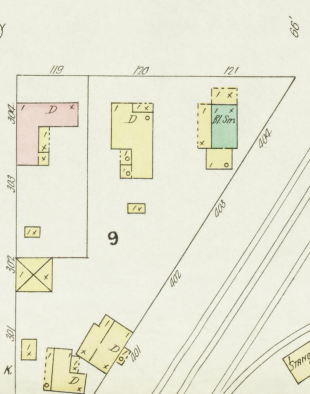


40'

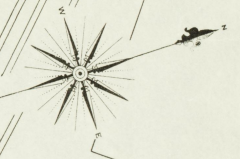
28'



40'



40'



Dunlap St.



