



FACT BOOKLET 2012-2013

see blue.
in everything we do.

UNIVERSITY OF KENTUCKY

Table of Contents

Letter from President Eli Capilouto	2-3	Private Giving	26
UK Mission and Vision	4	Grant and Contract Awards	27
Enrollment	5-9	Research and Development	28
First-year Student Profile	10-11	University Endowment	29
Retention and Graduation Rates	12-13	Library Collections	30
Degrees Conferred	14-16	Benchmark Institutions	31
Annual Tuition and Fees	17	Administrative Organization	32
Full-time Employees	18-19	Board of Trustees	33
Faculty Statistics	20-22	Administrative History	34
Faculty Salaries	23	UK Values	35
Budgeted Revenue and Expenditures	24-25		

May 2013

We are proud to publish the 2012-13 Fact Booklet; a collection of current statistics about people and programs at the University of Kentucky. In accordance with KRS 164.250, this booklet provides important data to our stakeholders and the general public, including information on enrollment management; retention and graduation rates; research contracts, grants and expenditures; faculty salaries; and a summary of the 2012-2013 Operating and Capital Budget.

Last fall, we welcomed our largest, most diverse and best prepared first-year class. At nearly 29,000 students, UK reached a record enrollment for the fifth consecutive year. We admitted historically high numbers of undergraduates and doctoral students enrolled in research/scholarship disciplines and professional practice programs. UK also attracted record numbers of international students and non-resident undergraduates.

Increasingly, we are the top choice for Kentucky students and those in our target recruitment regions. Approximately 19,000 students applied for admission to the fall 2012 semester, a 24 percent increase over the previous year. The first-year class included 71 National Merit and National Achievement Scholars, placing UK 11th among public universities and 30th overall in the number of National Merit Scholars.

Students are earning high academic marks at UK. The fall 2012 class set a record first-year GPA and fall 2011 class surpassed an 80 percent fall-to-fall retention rate – the fifth year in a row a first-year class met this benchmark.

Over the last year, we've seen incredible growth and progress across all dimensions of the University. But more must be done, and our greatest days are ahead. We are in the midst of a comprehensive campus renewal. Through an innovative partnership with EdR we are revitalizing our living learning communities, yielding several thousand new beds opening across campus over the next two years. Soon – because of private philanthropy and a unique partnership with the Athletics Department – we will begin work on a new Gatton College of Business and a state-of-the-art Academic Science Building.

These priorities embolden our mission as a nationally and internationally renowned flagship and land grant research university. They bolster our promise to Kentucky – a covenant that has never been more vital. As we continue our ascent, we are building a better University of Kentucky, and through it, a better future for our state.

Sincerely,

A handwritten signature in black ink that reads "Eli A. Capilouto". The signature is written in a cursive, flowing style.

Eli Capilouto
President

MISSION

The University of Kentucky is a public, land grant university dedicated to improving people's lives through excellence in education, research and creative work, service, and health care. As Kentucky's flagship institution, the University plays a critical leadership role by promoting diversity, inclusion, economic development, and human well-being.

VISION

The University of Kentucky will be one of the nation's 20 best public research universities.

-- Adopted by the Board of Trustees, June 9, 2005

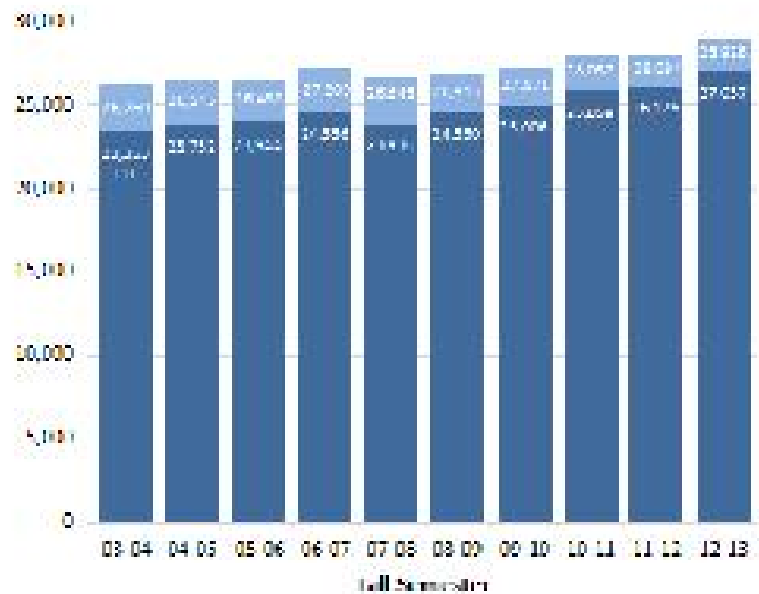
ENROLLMENT - Headcount and Full-time Equivalent

Fall 2012 Headcount

Level	Full-time	Part-time	Total
Undergraduate	19,178	1,649	20,827
Graduate*	5,898	1,309	7,207
Subtotal (IPEDS)	25,076	2,958	28,034
UG Auditors	0	51	51
Postdoctoral	218	0	218
House Staff	625	0	625
Total (CPE)	25,919	3,009	28,928

FTE calculations have been revised in accordance with CPE guidelines. The new method uses a formula that weights the number of student credit hours by students' degree level.

*Note: Beginning in 2005-10, federal reporting guidelines for enrollments eliminated the first-professional degree category and established a new Doctor's Degree - Professional Practice category. These degree programs are now subsumed under the graduate classification.



ENROLLMENT - Fall 2012 at a Glance

		% of Total
Men	14,013	48.4
Women	14,915	51.6
Total	28,928	100.0

Full-time	25,919	89.6
Part-time	3,009	10.4
Total	28,928	100.0

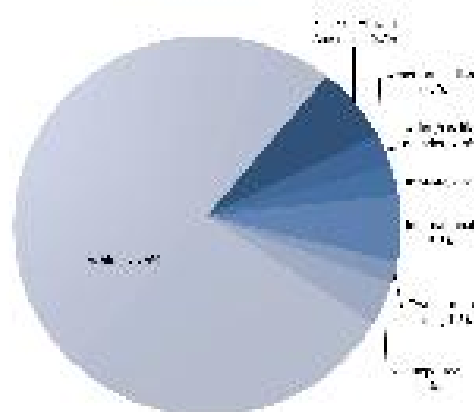
Resident	21,226	73.4
Non-resident	7,702	26.6
Total	28,928	100.0

		% of Total
Freshmen	5,765	19.9
Sophomores	4,285	14.8
Juniors	4,533	15.7
Seniors	5,853	20.2
UG Non-degree	442	1.5
Subtotal Undergraduate	20,878	72.2
Master/Specialist	2,583	8.9
Doctoral*	4,319	14.9
Graduate Non-degree	305	1.1
Subtotal Graduate	7,207	24.9
House Staff/Post Doctoral	843	2.9
Total	28,928	100.0

*Note: Beginning in 2009-10, federal reporting guidelines for enrollments eliminated the first-professional degree category and established a new Doctor's Degree - Professional Practice category. These degree programs are included under the Doctoral classification.

ENROLLMENT - Fall 2012 by Race/Ethnicity

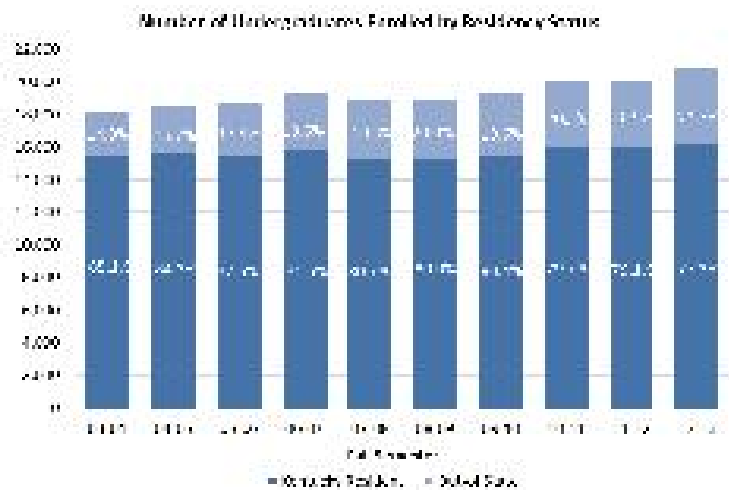
	Undergrad	Grad.	Post Doc.	House Staff	Total
Black or African American	1,561	353	0	14	1,928
Amer. Indian/ Alaskan Native	37	7	0	0	44
Asian/Pacific Islander	501	210	30	64	805
Hispanic/Latino	573	152	4	12	741
International	526	941	114	40	1,621
White	647	366	11	27	1,051
Two or more races	445	80	2	0	527
Not Reported	16,588	5,098	57	468	22,211
Total	20,878	7,207	218	625	28,928



Total = 28,928

UNDERGRADUATES - by Residency Status

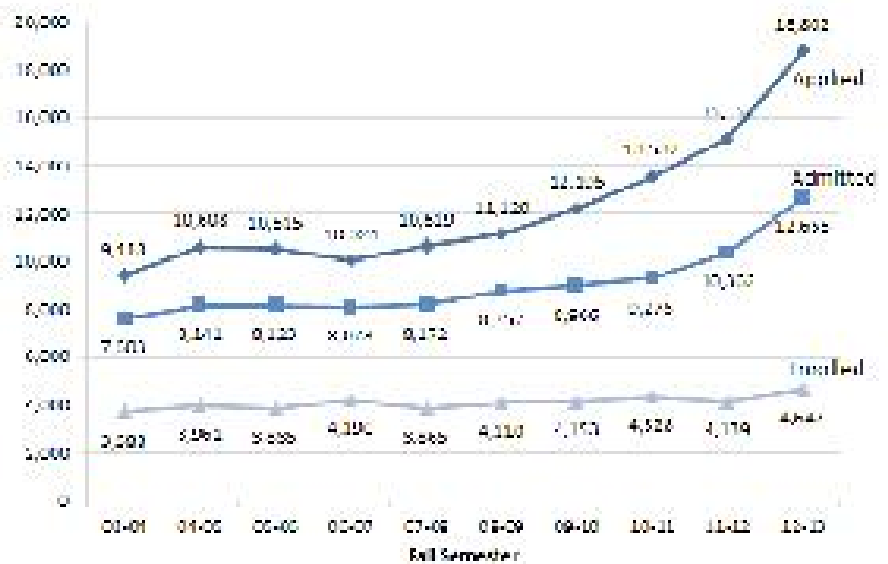
<u>Year</u>	<u>Kentucky Residents</u>	<u>Out-of-State Students</u>
Fall 2012	16,142	4,736
Fall 2011	15,949	4,203
Fall 2010	15,933	4,055
Fall 2009	15,457	3,780
Fall 2008	15,197	3,791
Fall 2007	15,196	3,634
Fall 2006	15,757	3,571
Fall 2005	15,481	3,251
Fall 2004	15,587	2,905
Fall 2003	15,486	2,704



APPLIED, ADMITTED and ENROLLED

First-year Students Fall 2012

Applied	18,802
Admitted	12,655
Enrolled	4,647
Admit. Rate	67.3%
Yield Rate	36.7%



FIRST-YEAR STUDENT PROFILE

	2008	2009	2010	2011	2012
Total	4,110	4,153	4,328	4,139	4,647
Female	2,099	2,118	2,219	2,194	2,498
Black or African-American	347	403	418*	422*	533*
Out-of-State	999	897	1,012	1,073	1,442
International	32	44	47	56	110
Full-Time	4,079	4,111	4,282	4,082	4,588
Governor's Scholars and Governor's School for the Arts	389	404	371	394	427
Merit Scholars	32	31	33	32	70
Valedictorians	133	141	147	154	208

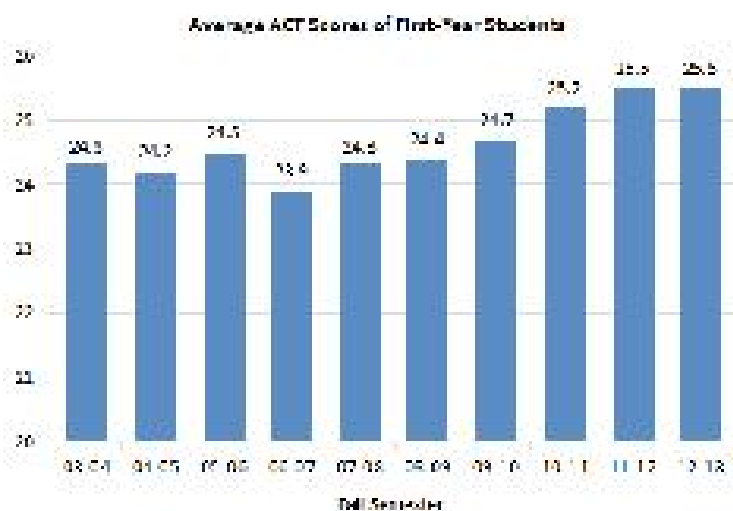


* This number includes students who reported two or more races, one of which was "black or African American".

ACT Scores - Entering First-year Students

Year	N	Mean	25th/75th Percentile
Fall 2012	4,240	25.5	23/28
Fall 2011	3,865	25.5	23/28
Fall 2010	4,049	25.2	22/28
Fall 2009	3,906	24.7	22/28
Fall 2008	3,825	24.4	22/27
Fall 2007	3,532	24.3	21/27
Fall 2006	3,864	23.9	21/26
Fall 2005	3,453	24.5	22/27
Fall 2004	3,609	24.2	21/27
Fall 2003	3,385	24.3	22/27

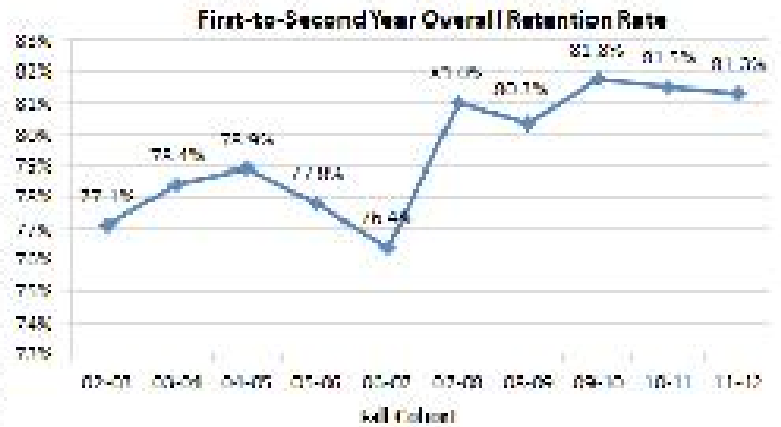
Note: Some students submit SAT scores rather than ACT scores. These students' scores are not reflected in the table and graph.



RETENTION RATE

First-to-second Year Retention Rate*

Cohort	Overall	Black or African American		Other
		White	American	
2011	81.3	82.2	73.8	82.8
2010	81.5	81.8	80.9	80.3
2009	81.8	83.1	71.2	80.6
2008	80.3	80.5	75.3	84.4
2007	81.0	81.2	80.0	79.5
2006	76.4	76.3	76.6	77.7
2005	77.8	78.0	76.1	76.4
2004	78.9	79.6	69.0	80.5
2003	78.4	78.4	72.8	83.1
2002	77.1	77.3	78.0	71.5



*Retention rates apply to first-time, full-time, degree-seeking students.

GRADUATION RATE

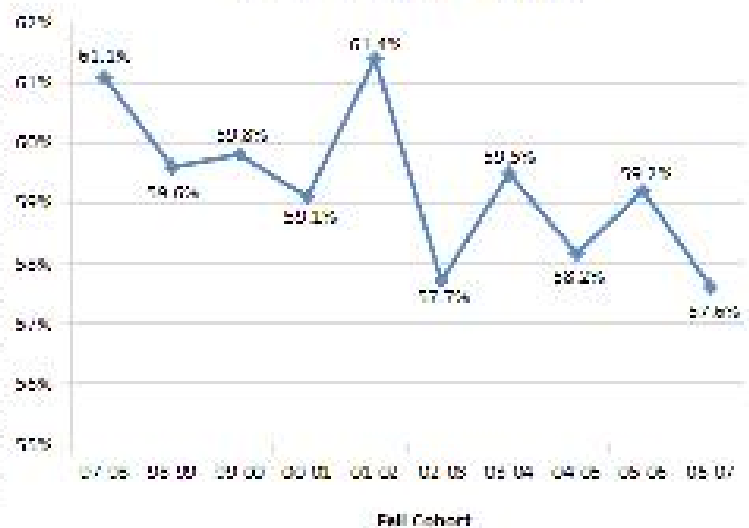
Six-year Graduation Rate*

Cohort	Overall	Black or African American		Other
		White	American	
2006	57.6	58.4	49.8	55.9
2005	59.2	59.7	46.8	58.2
2004	58.2	60.1	38.7	51.5
2003	59.6	60.5	42.9	62.8
2002	57.7	58.6	47.6	51.1
2001**	61.4	62.5	50.3	49.6
2000	59.1	60.6	45.0	50.5
1999	59.8	60.8	46.2	57.1
1998	59.6	60.2	49.7	61.4
1997	61.1	62.2	49.0	59.4

* Graduation rates apply to first-time, full-time, degree-seeking students.

** Reflects a correction made after IPEDS submission.

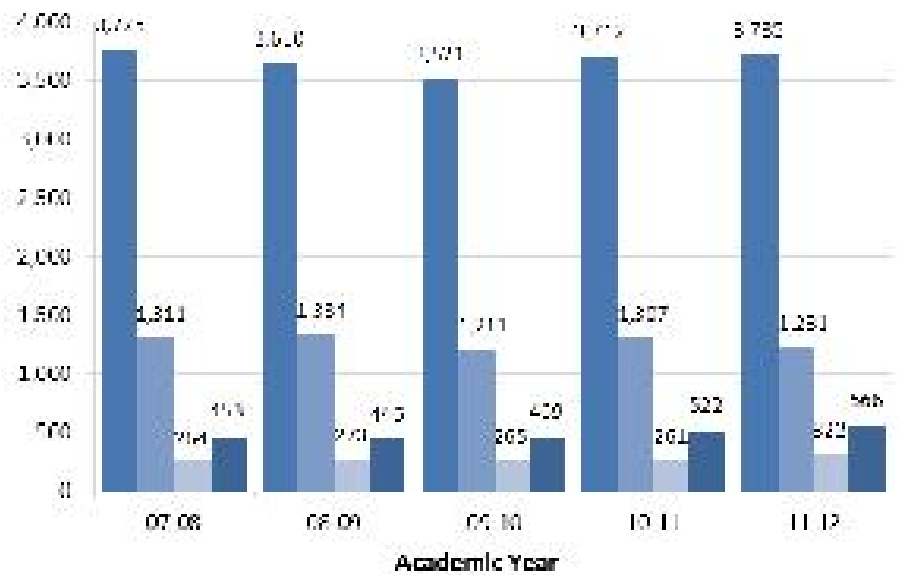
Six-Year Overall Graduation Rate



DEGREES CONFERRED

2012-2013

Baccalaureate	3,735
Master's/Specialist's	1,231
Doctor's Degree:	
Research/Scholarship	322
Professional Practice	566



DEGREES CONFERRED - By College

2011-2012

<u>College</u>	<u>Bacc.</u>	<u>Mast.*</u>	<u>Doc.**</u>
Agriculture	533	67	39
Arts & Sciences	1117	153	93
Business & Economics	590	172	11
Comm. & Info. Studies	311	107	4
Dentistry	-	13	62
Design	71	26	-
Education	332	234	43
Engineering	340	77	43
Fine Arts	155	36	15

<u>College</u>	<u>Bacc.</u>	<u>Mast.*</u>	<u>Doc.**</u>
Grad. School	-	109	3
Health Sciences	49	101	97
Law	-	-	148
Medicine	-	38	140
Nursing	195	8	21
Pharmacy	-	8	140
Public Health	-	87	24
Social Work	62	121	5
Total	3,755	1,357	888

* Includes Specialist degrees

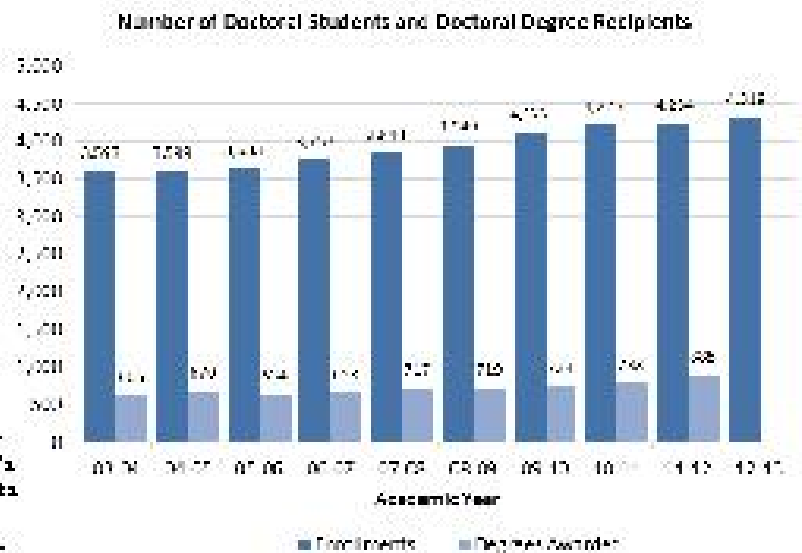
** Includes Doctor's Degrees (Research/Scholarship) and Doctor's Degrees (Professional Practice)

DOCTORATES - Enrollments and Degrees Awarded

Year	Fall Enrollment	Degrees Awarded
2012-13	4,319	
2011-12	4,234	888
2010-11	4,225	783
2009-10	4,122	734
2008-09	3,949	719
2007-08	3,843	717
2006-07	3,757	653
2005-06	3,633	634
2004-05	3,599	670
2003-04	3,593	605

Note 1: Federal reporting guidelines have eliminated the first-professional degree category and established a new Doctor's Degree - Professional Practice category. Doctoral enrollments and degree recipients have been revised to include enrollments and degrees from former first-professional programs.

Note 2: Enrollments are based on the fall semester of a given academic year. The number of degree recipients for 2012-13 is not yet available.



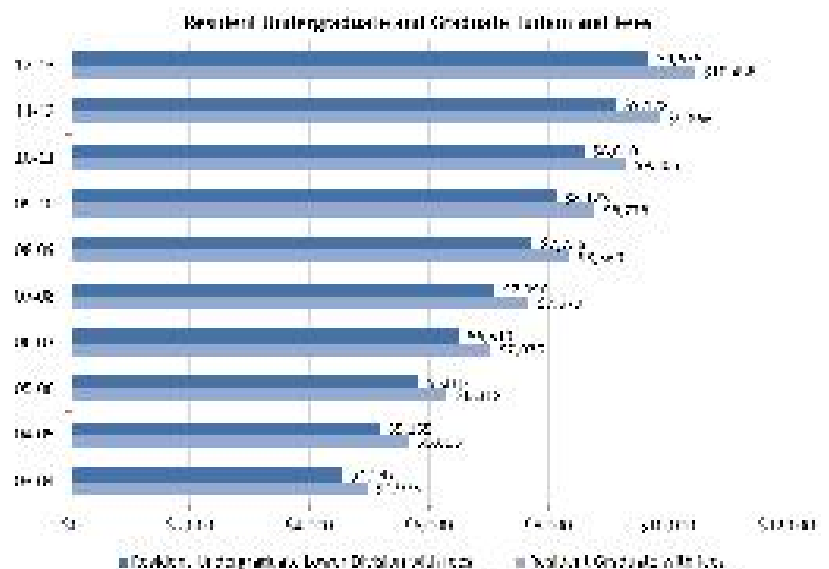
ANNUAL TUITION and FEES

2012-2013

<u>Resident</u>	<u>Tuition</u>	<u>Fees</u>
Graduate	\$ 9,392	\$ 1,066
Undergraduate		
- Lower Division	8,610	1,066
- Upper Division	8,890	1,066
<u>Non-resident</u>	<u>Tuition</u>	<u>Fees</u>
Graduate	\$ 20,480	\$ 1,066
Undergraduate		
- Lower Division	18,798	1,066
- Upper Division	19,064	1,066

Note 1: The undergraduate tuition rate in the graph applies to lower division students.

Note 2: Several graduate programs (e.g., MBA) have differential tuition rates.



FULL-TIME EMPLOYEES

2011-2012

Full-Time Employees	President's Office	Provost			Health Affairs	Total	% Total
		Educational Units	Administration/Support	Finance and Administration			
Exec./Admin./Managerial	40	185	106	87	101	519	4.2%
Faculty	0	2,225	0	0	0	2,225	18.0%
Library Faculty	0	66	0	0	0	66	0.5%
Other Professional	200	1,814	523	362	1,205	4,104	33.2%
Secretarial/Clerical	81	1,262	286	185	656	2,470	20.0%
Tech./Paraprofessional	22	881	102	195	355	1,555	12.6%
Skilled Crafts	5	28	6	150	0	189	1.5%
Service/Maintenance	10	200	141	649	215	1,215	9.8%
Total	358	6,661	1,164	1,628	2,532	12,343	100.0%

Note 1: Percentages may not total properly due to rounding.

Note 2: The President's Office includes staff from the Athletics Department and the Offices of the General Counsel, Institutional Advancement, and Commercialization and Economic Development.

Note 3: Starting in 2009-07, library faculty are reported to the federal government in the other professional category. For this publication, library faculty are classified separately.

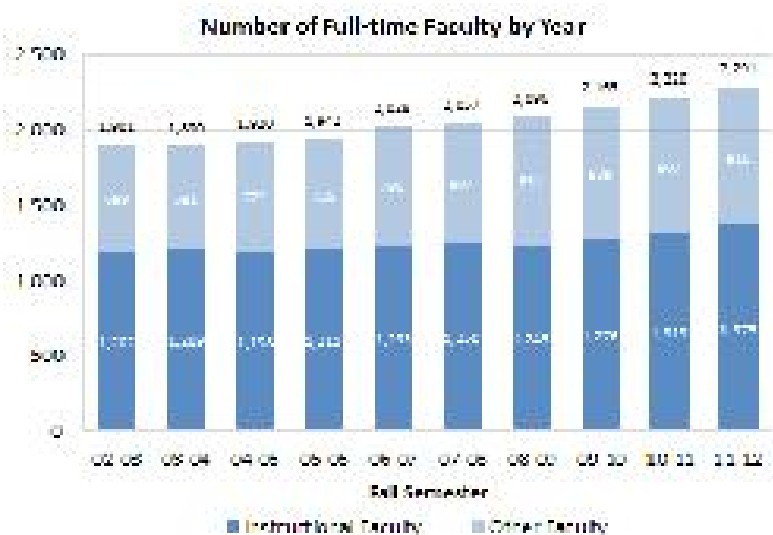
FULL-TIME EMPLOYEE DEMOGRAPHICS

2011-2012

Full-time Employees	<u>Black or African American</u>	<u>American Indian/ Alaskan Native</u>	<u>Asian/ Pacific Islander</u>	<u>Hispanic/ Latino</u>	<u>White</u>	<u>Two or more races</u>	Female	Male
Exec./Admin./Managerial	28	0	14	2	473	2	242	277
Faculty	90	1	263	56	1,803	12	820	1405
Library Faculty	2	1	1	0	62	0	46	20
Other Professional	163	1	204	39	3,674	23	2,630	1474
Secretarial/Clerical	287	1	25	20	2,110	27	2,172	298
Tech./Paraprofessional	136	1	67	23	1,315	13	926	629
Skilled Crafts	21	0	2	0	165	1	3	186
Service/Maintenance	365	0	21	11	813	5	445	770
Total	1,092	5	597	151	10,415	83	7,284	5,059

FULL-TIME FACULTY - Historical Trends

	Instructional Faculty*	Other Faculty
2011-2012	1,375	916
2010-2011	1,313	907
2009-2010	1,276	889
2008-2009	1,245	851
2007-2008	1,250	807
2006-2007	1,233	795
2005-2006	1,211	731
2004-2005	1,198	722
2003-2004	1,209	681
2002-2003	1,202	699



*Note: Instructional faculty in preclinical and clinical medicine are not included.

FACULTY DEMOGRAPHICS

Tenured and Tenure-track Faculty 2011-2012

	<u>Black or African American</u>		<u>American Indian/ Alaskan Native</u>		<u>Asian/ Pac. Islander</u>		<u>Hispanic/ Latino</u>		<u>White</u>		<u>Two or more races</u>	
	<u>M</u>	<u>F</u>	<u>M</u>	<u>F</u>	<u>M</u>	<u>F</u>	<u>M</u>	<u>F</u>	<u>M</u>	<u>F</u>	<u>M</u>	<u>F</u>
Full-Time Faculty												
Professors/Lib. I	5	7			57	7	8	2	458	135		
Associate Professors/Lib. II	19	12			38	15	4	6	275	168	5	
Assistant Professors/Lib. III	13	13			37	26	7	10	169	129	2	3
Instructors/Lib. IV				1					6	3		
Total	37	32	0	1	132	48	19	18	908	435	7	3

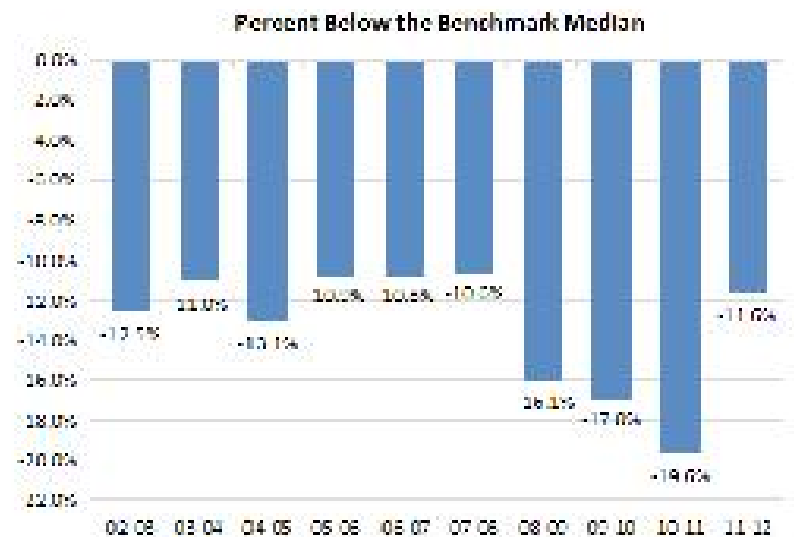
FACULTY - By Rank and Title Series: 2011-2012

Rank	<u>Tenured/Tenure Track</u>				Total
	Regular	Librarian	Extension	Spec. Title	
Professors/Lib. I	541	26	43	69	679
Associate Professors/Lib. II	374	26	15	127	542
Assistant Professors/Lib. III	331	5	14	59	409
Instructors/Lib. IV	1	9			10
Total	1,247	66	72	255	1,640

Rank	<u>Non-tenure Track</u>				Total
	Clinical	Research	Lecturer	Other	
Professors	23	3		8	34
Associate Professors	69	18		1	88
Assistant Professors	257	69		1	327
Instructors	23			19	42
Senior Lecturers			28		28
Lecturers			132		132
Total	372	90	160	29	651

FACULTY SALARIES

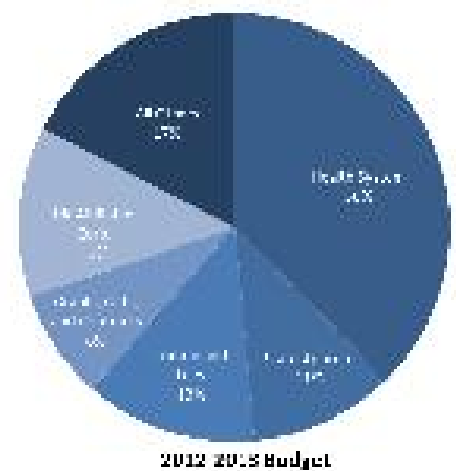
Fall	All-ranks Average Salary	Benchmark Median Salary
2011*	\$ 84,246	\$ 95,298
2010	81,000	100,766
2009	81,189	97,833
2008*	80,813	96,312
2007	79,350	88,787
2006	76,065	85,300
2005	73,685	82,664
2004	71,026	81,713
2003	69,911	78,594
2002	66,953	76,547



*Note: Beginning in 2008-09, the Top 20 Business Plan benchmark institutions replaced the 15 CPE benchmark institutions in salary comparisons. In 2011-12, the 11 benchmark institutions identified by the University Review Committee replaced the Top 20 Business Plan benchmark universities.

REVENUE (In Millions)

Source of Funds	<u>Revised Budget</u>	<u>Budget</u>
	2011-12	2012-13
State Appropriations	\$303.4	\$283.9
Student Tuition and Fees	314.4	338.5
County Appropriations	18.4	19.2
Endowment and Investment Income	24.5	17.7
Federal Appropriations	17.7	18.5
Gifts, Grants and Contracts	234.4	218.3
Sales and Services	20.5	21.8
Hospital Services	1,027.7	985.5
Auxiliary Enterprises	85.2	180.9
UK Affiliated Corporations	398.3	337.6
Appropriated Fund Balances - University	251.4	192.7
Transfers	2.9	3.8
Total	\$2,698.8	\$2,618.4



EXPENDITURES (In Millions)

Program	Revised Budget		Budget	
	2011-12		2012-13	
Instruction	\$381.5		\$335.0	
Research	280.2		278.3	
Public Service	308.3		317.4	
Libraries	26.1		24.6	
Academic Support	107.6		106.7	
Student Services	38.0		38.7	
Institutional Support	109.9		147.2	
Operations and Maintenance	81.6		72.1	
Financial Aid	115.6		123.7	
Auxiliary Enterprises	166.0		167.0	
Hospital Services	1008.2		929.0	
Mandatory Transfers	75.8		78.7	
Total	\$2,698.8		\$2,618.4	

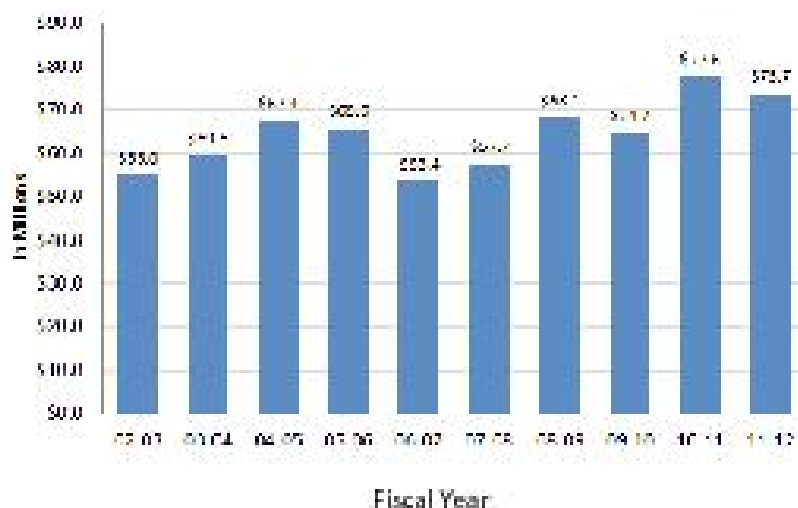
Category	Revised Budget		Budget	
	2011-12		2012-13	
Personnel Services	\$1,232.8		\$1,255.2	
Operating Expenses	1,151.6		1,096.8	
Financial Aid	115.6		123.8	
Capital Outlay	123.0		63.9	
Mandatory Transfers	75.8		78.7	
Total	\$2,698.8		\$2,618.4	

PRIVATE GIVING (In Millions)

Fiscal Year 2011-2012

Alumni	\$ 20.8
Non-alumni	13.0
Corporations	13.2
Foundations	17.3
Trusts/Associations	9.4
Total	\$ 73.7

Note: With the transfer of LCC to the KCTCS in 2003-04 PG gifts to LCC stopped being reflected in UK's Private Giving statistics.



GRANT and CONTRACT AWARDS (In Millions)

2011-2012

By Category of Support

Instruction	\$10.6
Research	\$186.5
Public Service	\$75.2
Other	\$1.8
Total	\$ 274.1

By Source

Federal	56%
State	24%
Business, Industry, Other	20%



Note: With the transfer of LCC to the ROTCS in 2003-04 FY, awards to LCC stopped being reflected in LR's Grant and Contract Awards statistics.

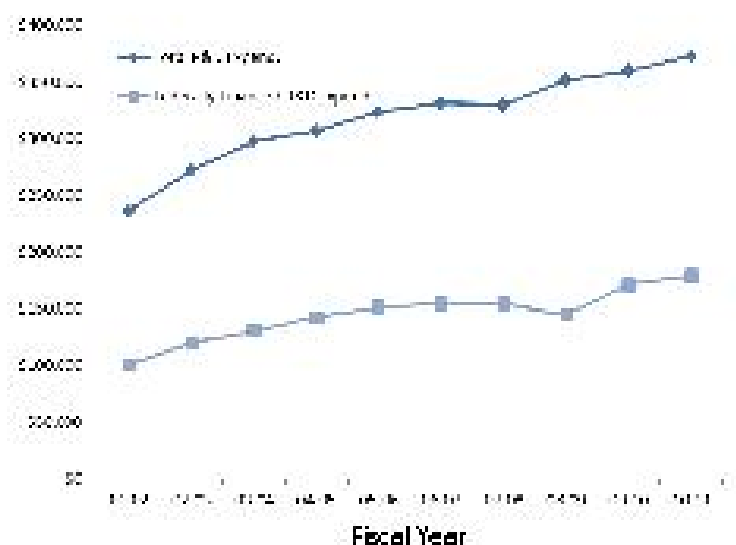
RESEARCH and DEVELOPMENT (In Thousands)

Fiscal Year	Total R&D Expenditures*	Federally Financed R&D Expenditures*
2011	\$372,932	\$179,161
2010**	359,944	171,528
2009	351,943	144,221
2008	329,354	154,260
2007	331,606	154,688
2006	323,958	151,238
2005	306,653	142,794
2004	297,610	129,887
2003	272,062	120,003
2002	236,275	100,426

*As reported to the National Science Foundation for science and engineering disciplines; expenditures for FY 2008 and 2009 have been revised.

** The FY 2010 Expenditure amount included all fields, not just science and engineering.

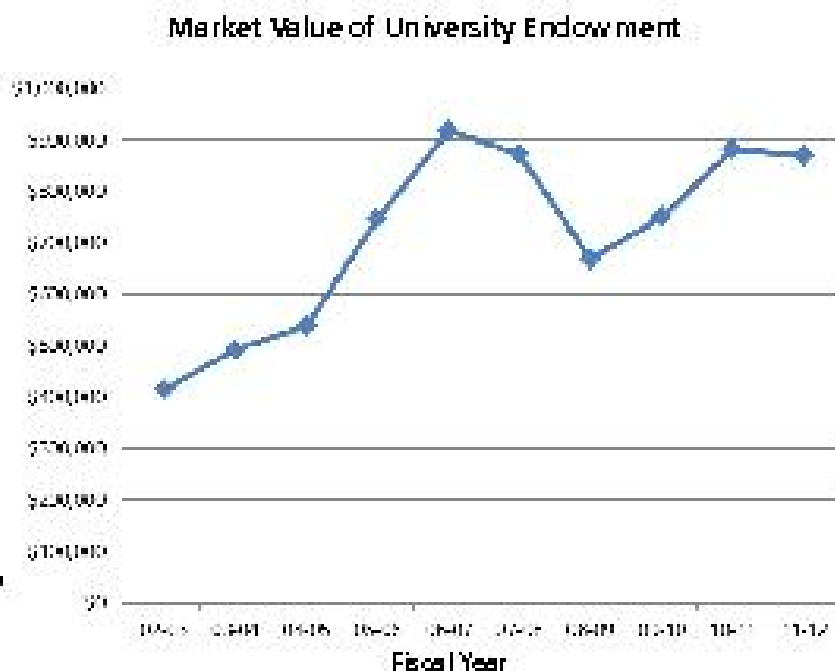
Research and Development Expenditures



UNIVERSITY ENDOWMENT (In Thousands)

<u>Fiscal Year</u>	<u>Market Value</u>
2012	\$ 868,316
2011	881,860
2010	748,676
2009	668,008
2008	871,861
2007	916,590
2006	746,114
2005	538,384
2004	491,098
2003	414,328

Note: In 2003, the Chandler Medical Center University Hospital Quasi-Endowment Fund for \$150 million was established, accounting for the large increase over the 2002 total.



LIBRARY COLLECTIONS

	2009-2010	2010-2011	2011-2012
Volumes Held	3,915,579	3,980,246	4,023,142

UK Libraries' collections also include access to approximately 450 licensed networked electronic databases, over 69,000 electronic journals and over 550,000 electronic books accessible in the University's 12 libraries and also available to faculty and students off campus via a proxy server. In addition, the collections include: 264,000 maps; over 200 current state, national and international newspapers; nearly 8,000 interviews in the Louis B. Nunn Center for Oral History; the University Archives and Records Program; the Wendell H. Ford Public Policy Research Center; the Audio-Visual Archives; the Bert T. Combs Appalachian Collection; the Public Policy Archives; the Rare Book Collection which includes the W. Hugh Peal Collection of 19th century English and related literature; and the Preservation Reformatting Center. The Center for Digital Programs creates digital content for the Kentucky Digital Library including electronic texts, digitized photographs, images and archival finding aids. UK Libraries is a regional depository for U.S. government publications, and also a depository for Canadian government publications and European Union publications. British Parliamentary Papers, Kentucky government publications, and technical reports from federal agencies are all selectively collected.



CURRENT BENCHMARK INSTITUTIONS

Michigan State University

Ohio State University

University of Arizona

University of California – Davis

University of Florida

University of Iowa

University of Michigan – Ann Arbor

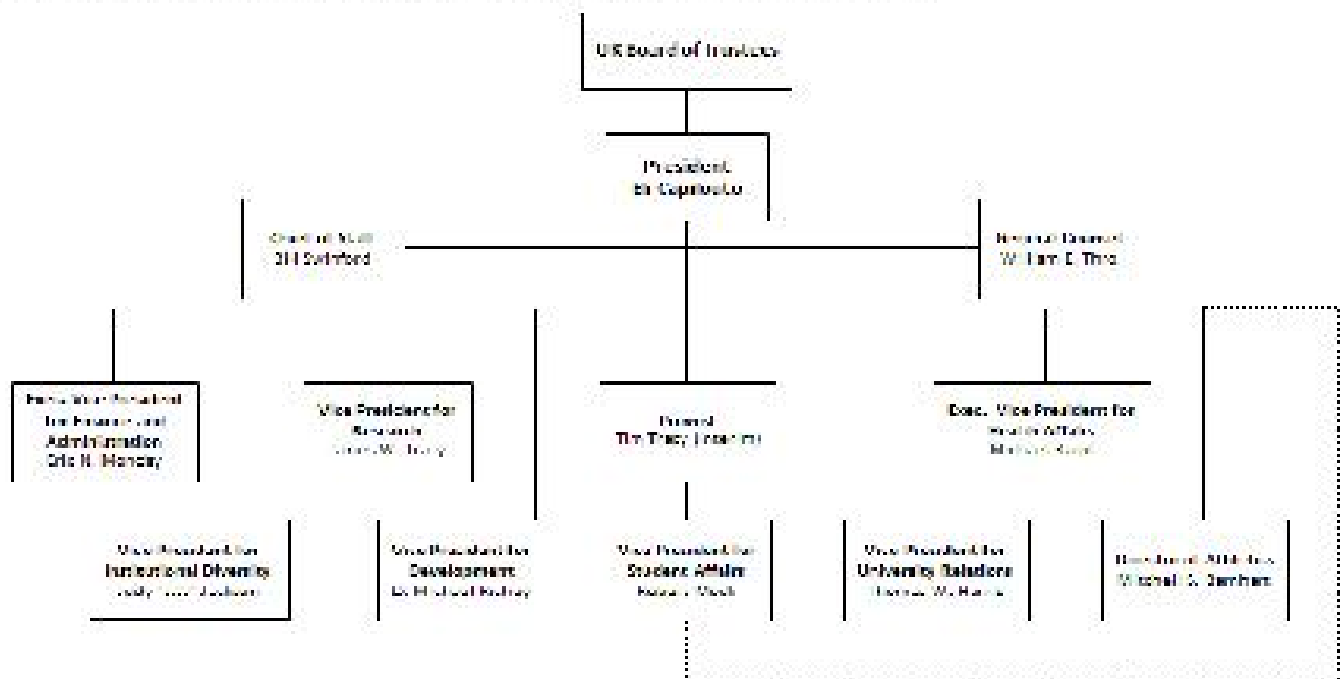
University of Minnesota – Twin Cities

University of Missouri - Columbia

University of North Carolina – Chapel Hill

University of Wisconsin – Madison

ADMINISTRATIVE ORGANIZATION



BOARD of TRUSTEES

C.B. Akins, Sr.	Lexington	(2017)	Kelly Sullivan Holland	Alumni Member	(2018)
Stephen Bilas	Student Member	(2013)	Pamela T. May	Pikeville	(2013)
William C. Britton	Louisville	(2017)	Billy Joe Miles	Owensboro	(2013)
Edward Britt Brockman	Louisville	(2014)	Terry Mobley	Lexington	(2016)
Sheila Brothers	Staff Member	(2013)	Charles R. Sachatello	Lexington	(2013)
Mark P. Bryant	Paducah	(2018)	C. Frank Shoop	Lexington	(2014)
Jo Hern Curris	Alumni Member	(2014)	James W. Stuckert	Prospect	(2015)
William Stamps Farish, Jr.	Versailles	(2016)	Irina Voro	Faculty Member	(2014)
Oliver Keith Gannon	Mt. Sterling	(2016)	John F. Wilson	Faculty Member	(2013)
Carol Martin "Bill" Gatton	Tennessee	(2015)	Barbara Young	Lexington	(2015)

ADMINISTRATIVE HISTORY

- 1865** Agricultural and Mechanical College (A&M) established as part of Kentucky University
- 1869** James K. Polkton became President of A&M
- 1878** A&M separated from Kentucky University
- 1882** A&M moved to current location in Lexington
- 1885** Ag. Experiment Station opened
- 1889** College of Agriculture established
- 1908** College of Arts and Sciences and College of Law established; A&M name changed to "State University, Lexington, Kentucky"
- 1909** University Library established
- 1911** Henry S. Barker became President of State University
- 1916** State University renamed University of Kentucky
- 1917** Frank L. McVey became President of UK; Graduate School established
- 1918** College of Engineering established
- 1923** College of Education established
- 1925** College of Business and Economics established
- 1941** Herman L. Donovan became President
- 1947** College of Pharmacy moved to UK
- 1956** Frank G. Dickey became President
- 1957** Ashland Extension Center established
- 1960** Medical Center established; College of Medicine admitted first class; College of Nursing admitted first class; Henderson Extension Center and Southeast Extension Center established
- 1962** College of Dentistry admitted first class; University Hospital opened
- 1963** John W. Oswald became President
- 1964** Community College System established under UK; College of Architecture established
- 1965** Lexington Technical Institute (LTI) established
- 1966** College of Allied Health Professions established
- 1967** College of Home Economics established
- 1968** Albert D. Kirwan became President
- 1969** College of Social Work established; Otis A. Singletary became President
- 1970** College of Library and Information Science established
- 1976** College of Communications and College of Fine Arts established
- 1982** University reorganized with a Central Administration and three sectors headed by Chancellors (Lexington Campus, Medical Center, and Community College System)
- 1984** LTI became Lexington Community College
- 1987** David P. Roselle became President
- 1990** Charles T. Withington, Jr. became President
- 1993** College of Communications and Information Studies established
- 1998** William T. Young Library opened; All Community Colleges (except LOC) transferred to the KCTCS
- 2001** Lee T. Todd, Jr. became President; University reorganized with a Provost model
- 2002** College of Design established
- 2004** LOC transferred to the KCTCS; College of Public Health established
- 2011** Eli Capilouto became President

VALUES

The values of the University guide its decisions and the behavior of its community. Its core values are:

- *Integrity*
- *Excellence*
- *Mutual Respect and Human Dignity*
- *Diversity and Inclusion*
- *Academic Freedom*
- *Shared Governance*
- *Work-life Sensitivity*
- *Civic Engagement*
- *Social Responsibility*

-- Adopted by the Board of Trustees, June 9, 2009

