

2

2

3

4

1

6" W. PIPE

N. M. SEWEN

9

6" W. PIPE

S. M. SEWEN

10

6" W. PIPE

EARLINGTON MACHINE WORKS

NO WATCHMAN NO FIRE ARMS
LIGHTS ELECTRIC, HEAT,
STOVES FUEL OIL

FLOUR MILL
CAPACITY 25 BARLS
BUILT 1900
HEAT STEAM
POWER & LIGHTS ELEC.

W. MAIN

W. FARREN

OCT. 1923
EARLINGTON
KY.

L. & N. P. R.
ROUND HOUSE

RUN DAY AND NIGHT EMPLOYEES DOLLED IN FIRE FIGHTING
ONE ROUND HOUSE 8,500' WIDE SEVERAL SECTIONS OF HEAVY ROOF
PLANT 30,000 GAL. W. T. 200' S.E. OF SHOP LIGHTS, ELECTRIC
HEAT, STOVES, FUEL OIL

ROUND HOUSE

TURN

61
(IA)



AUDITORIUM
HEAT STEAM, LIGHTS ELEC.

GARAGE
CAPACITY 15 CARS
HEAT STEAM
LIGHTS ELECT
NO POWER
CIVIL PL.
STEEL TRUSS R.F.

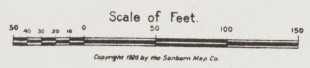
FIRE DEPT
TOWN HALL

WOODS
BRIDGE

S. SEBREE

S. RAILROAD

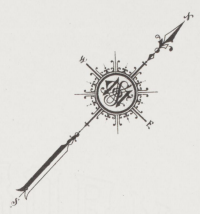
AV.



Scale of Feet.

Copyright 1923 by the Sanborn Map Co.

OCT. 1923
EARLINGTON
K. Y.



4

4

7

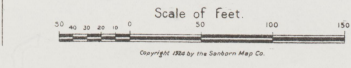
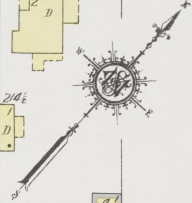
8

11

5

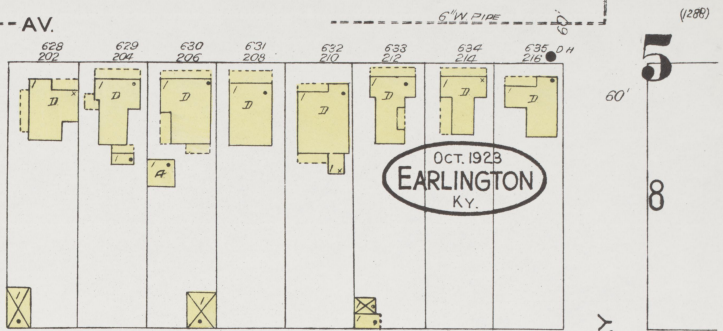
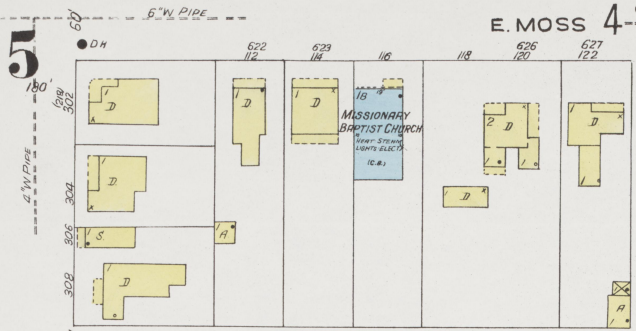
1

OCT. 1923
EARLINGTON
KY.



ST. BERNARD MINING CO. COMMISSARY
HOTEL EARLINGTON
VICTORY HOTEL
PUBLIC SCHOOL
CHRISTIAN CHURCH
S. BERNARD PAROCHIAL SCHOOL
M.E. CHURCH (SOUTH)
GARAGE
POST OFFICE
WAREHOUSE
PASSENGER DEPOT

E. MOSS 4 AV.



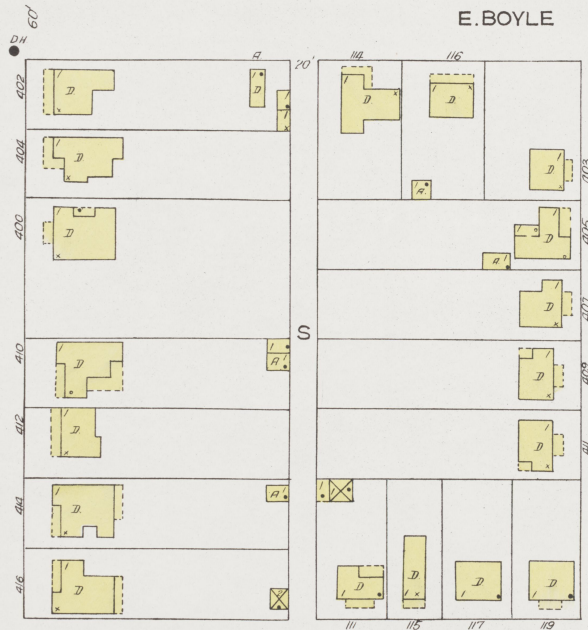
11

S. RAILROAD

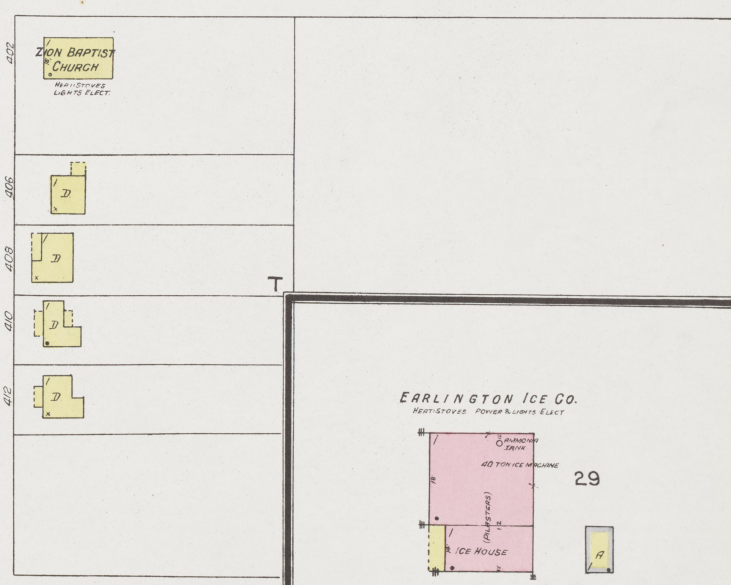
6" W PIPE

E. BOYLE

AV.

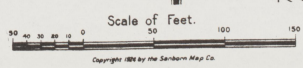
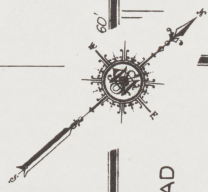
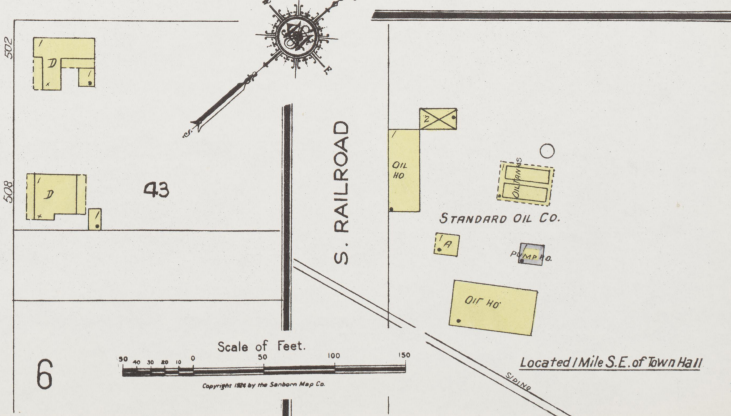


S. ROBINSON



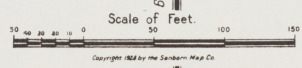
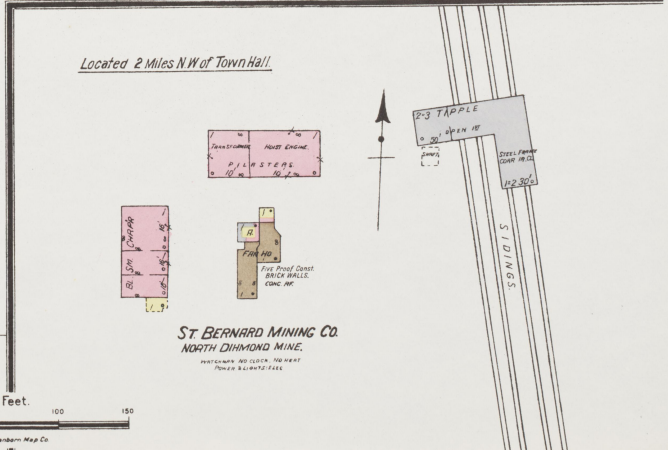
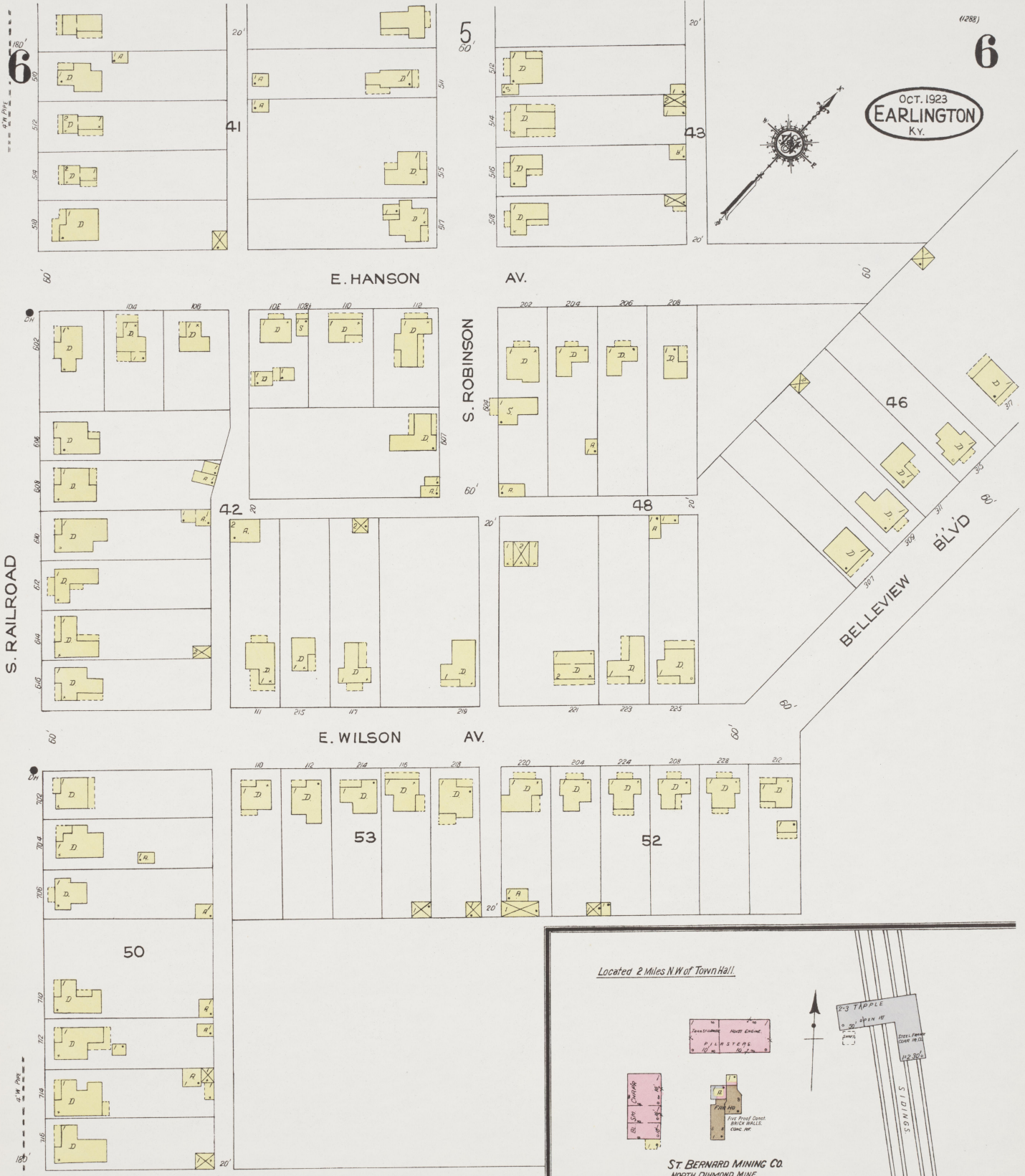
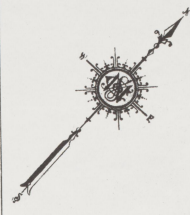
E. THOMPSON AV.

AV.



Located 1 Mile S.E. of Town Hall

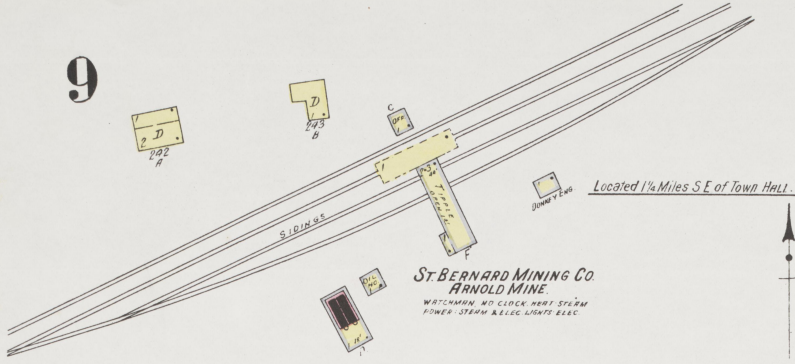
OCT. 1923
EARLINGTON
KY.



Copyright 1923 by the Standard Map Co.

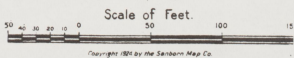
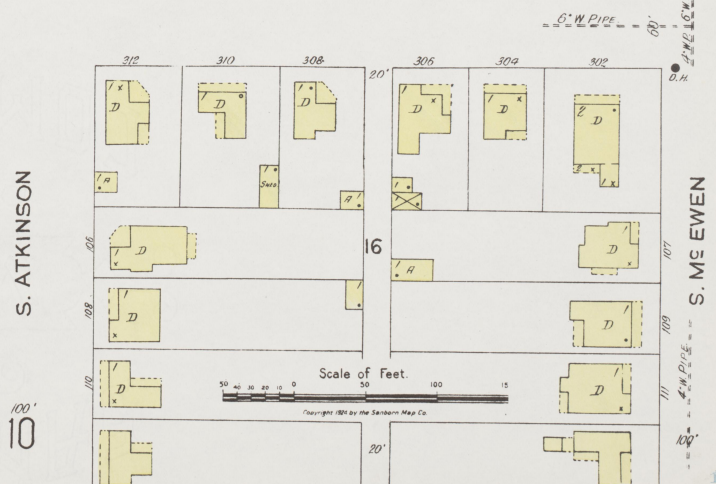
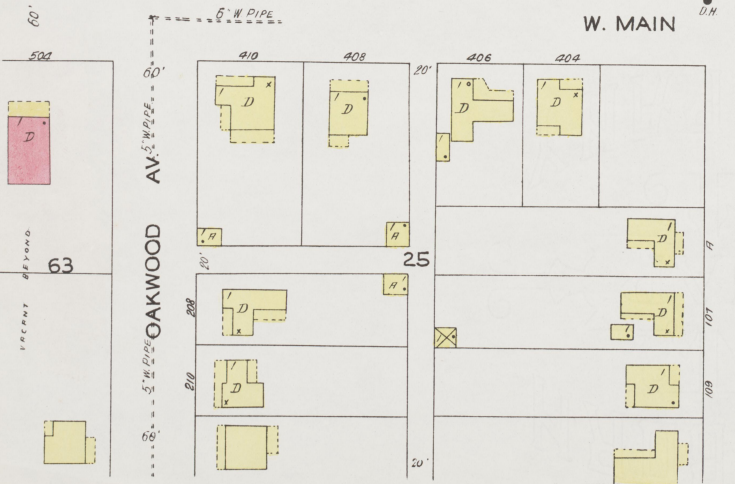
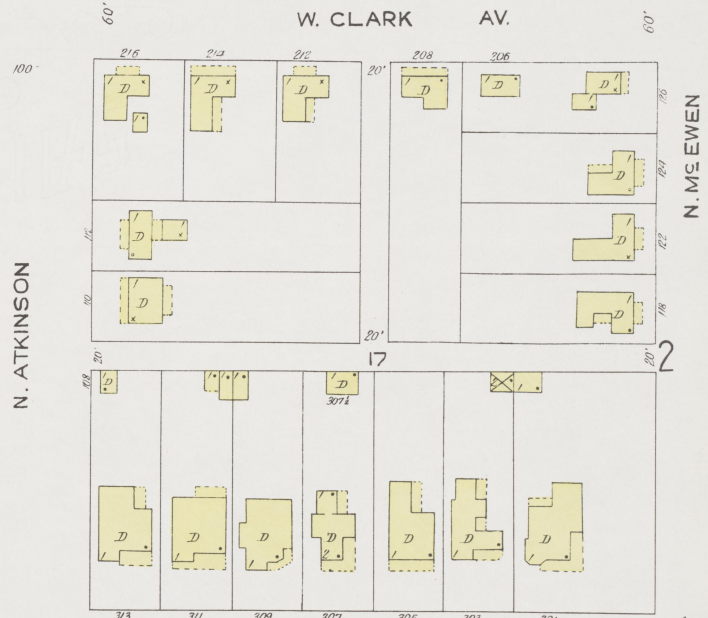
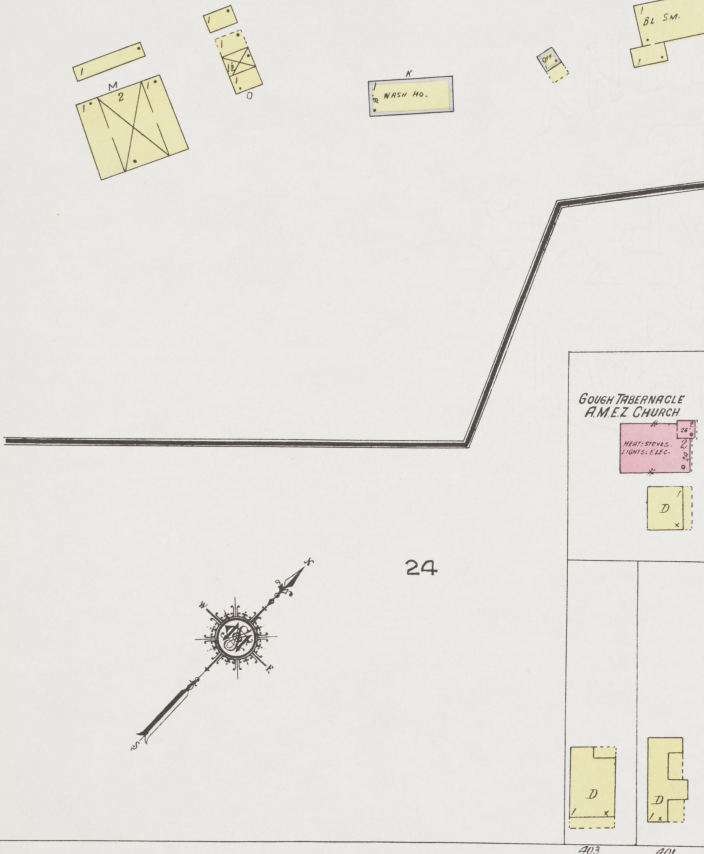
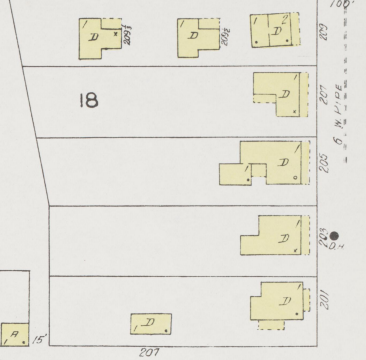


9

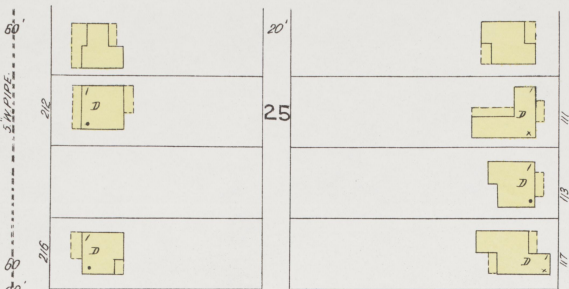


Oct. 1923
EARLINGTON
Ky.

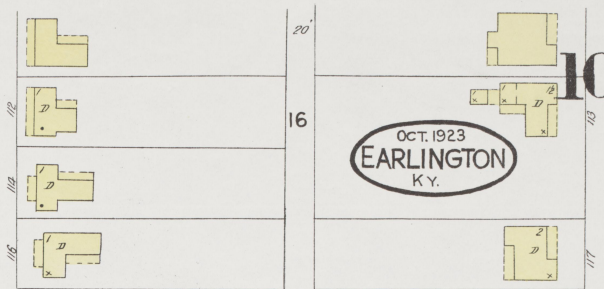
ST. BERNARD MINING CO.
ELEC. LIGHT PLANT &
WATER WORKS
OPERATES DAY & NIGHT
1-1000,000 GAL. CAPACITY IN STORAGE TANKS



10
VACANT BEYOND
213



9
100



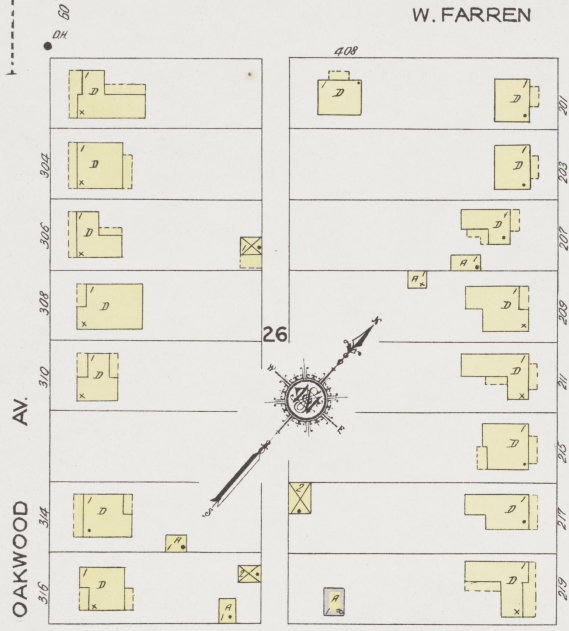
OCT. 1923
EARLINGTON
KY.

10
100

2

W. FARREN

AV.

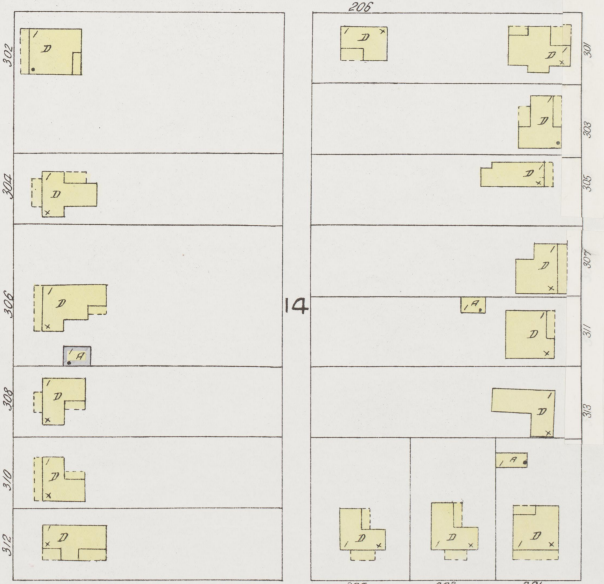


S. ATKINSON

AV.



W. MOSS



11

11

W. FARREN

2 AV.

OCT. 1923
EARLINGTON
KY.

4

W. MOSS

AV.

10
S. MCEWEN

S. SEBREE

S. RAILROAD

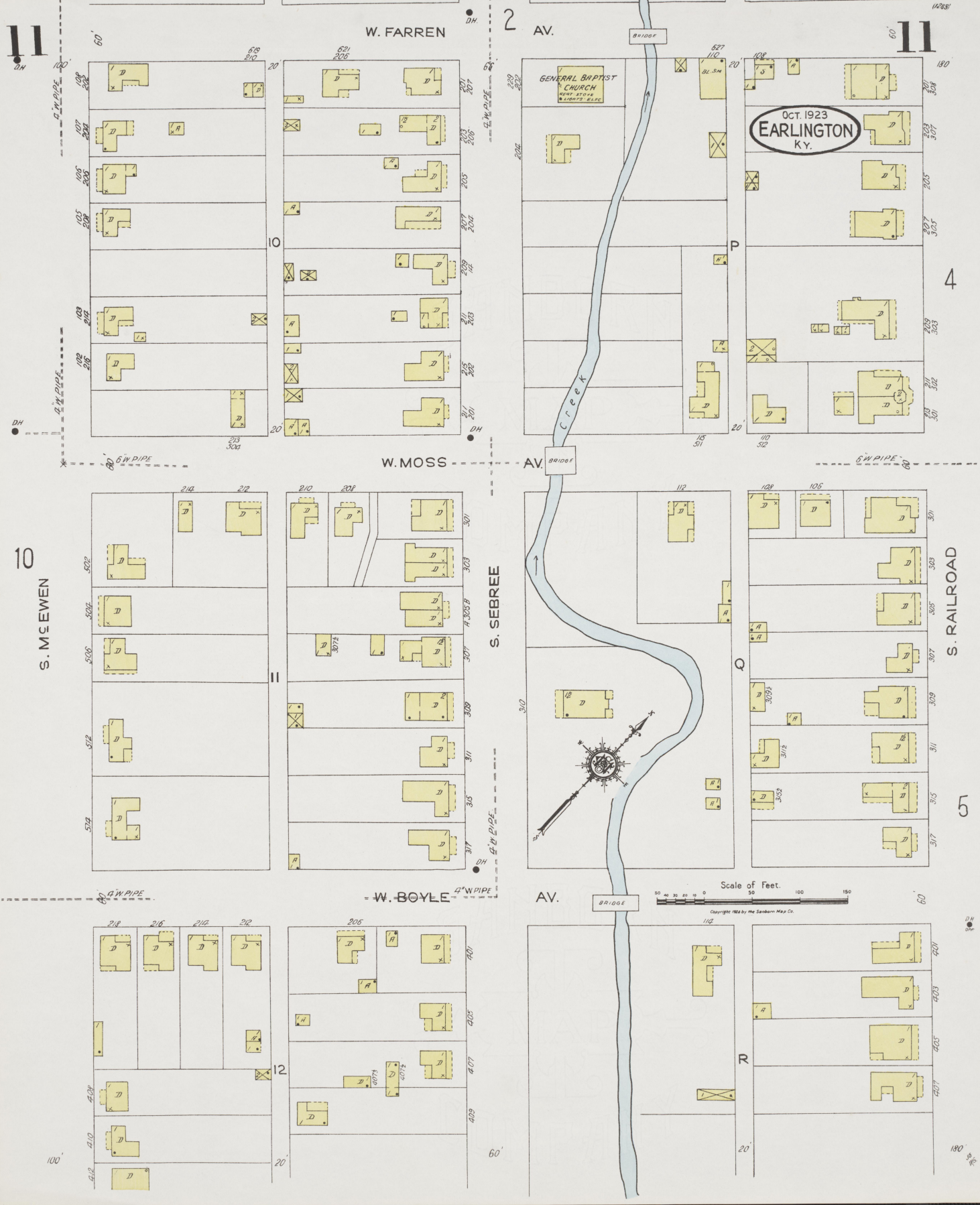
5

W. BOYLE

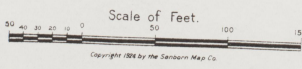
AV.

Scale of Feet.
0 50 100 150
Copyright 1924 by the Seaborn Map Co.

180



OCT 1923
EARLINGTON
KY.



13

Located 3/4 Mile N.W. of Town Hall

ST. BERNARD MINING CO.
No. 11, TIPPLE

NO WATCHMAN - NO HEAT - POWER
IN LIGHTS - ELEC.

NO EXPOSURES

ST. BERNARD MINING CO.
HECLA MINE

NO WATCHMAN - NO HEAT - POWER
IN LIGHTS - ELEC.

VACANT BEYOND

OCT 1923
EARLINGTON
K.Y.

13

(1289)

ST. BERNARD MINING CO.

Located 1 Mile N. of Town Hall

NISBETT No. 11 MINE
NO WATCHMAN - HEAT - STEAM -
POWER & LIGHTS - ELEC.

COKE PLANT
NOT IN OPERATION
- NO WATCHMAN -

ST. BERNARD MINING CO.

MINE No. 9

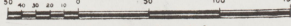
NIGHT WATCHMAN - IMPROVED
CLOCK - HEAT - STEAM - LIGHTS & POWER - ELEC.
1 D.M. & 200' 25' HOSE.

ST. BERNARD MINING CO.
OLD MINE No. 11

NO WATCHMAN - HEAT - STEAM - POWER -
LIGHTS - ELEC.

Located 2 Miles N of Town Hall

Scale of Feet.



Copyright 1923 by the Sanborn Map Co