



4876
3 SHEETS

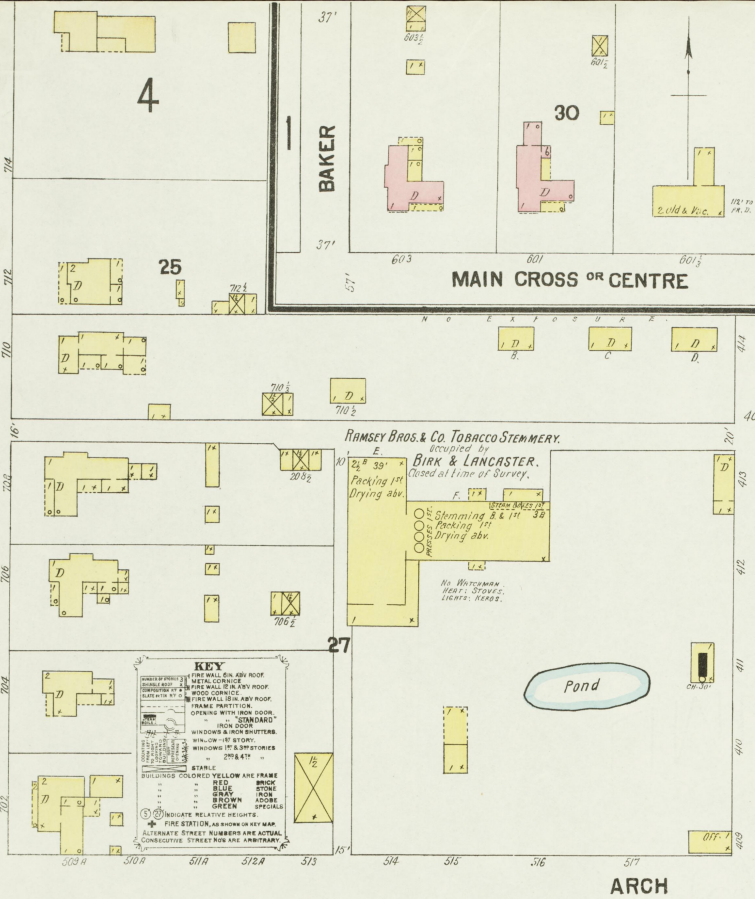
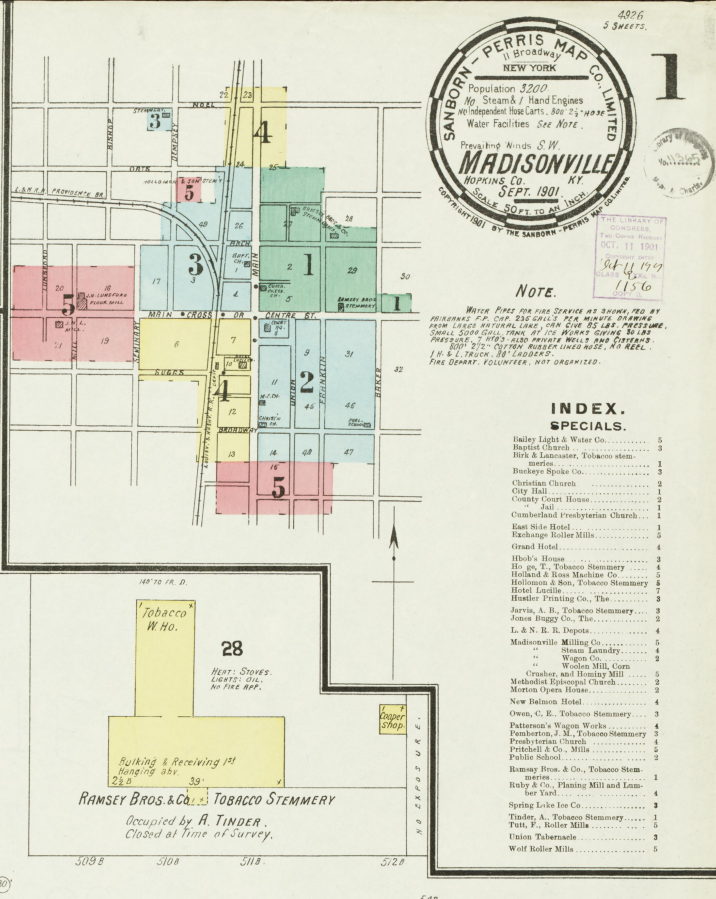
1

Note.

Water Pipe for Fire Service as shown by
PLANES & P. CO. THE SPECIALS, 224 MADISONVILLE
SMALL SCALE PLAN OF THE BURNING SHEDS AND
PRESERVATION OF THE BURNING SHEDS
NO. 272 - CITY NUMBER LINE NO. 111 REEL
1. W. & R. CO. 287 MADISONVILLE
FIRE DEPT. FOLLOWER, NOT ORGANIZED.

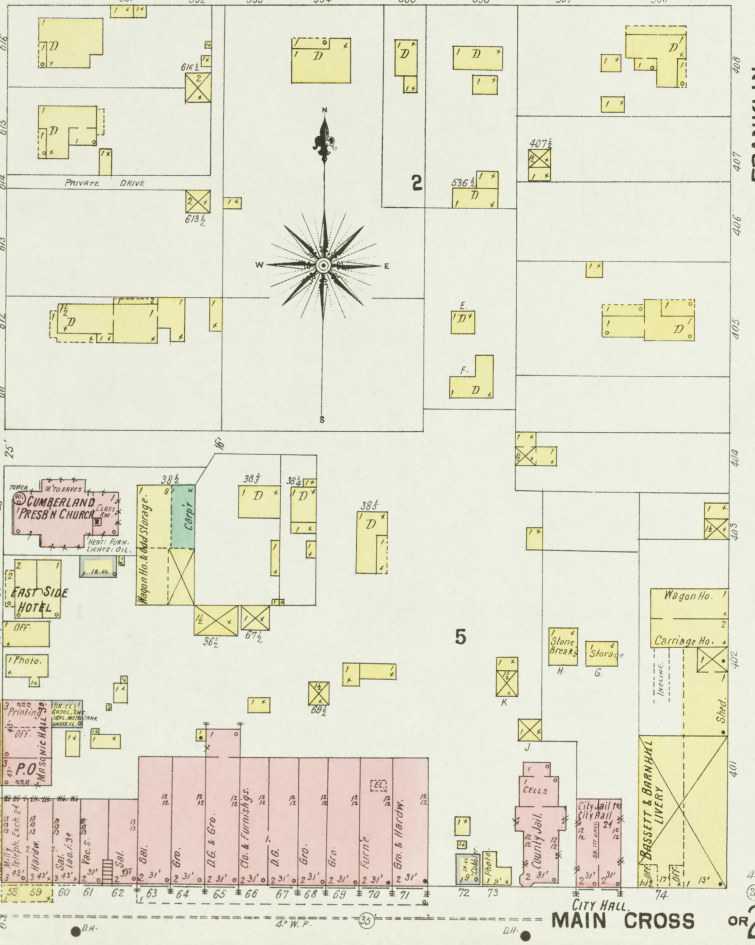
**INDEX.
SPECIALS.**

- Bailey Light & Water Co. 5
- Baptist Church 5
- Birk & Lancaster, Tobacco stem-
meries 1
- Buckeye Spoke Co. 3
- Christian Church 3
- City Hall 1
- County Court House 1
- Jail 1
- Methodist Presbyterian Church 1
- East Side Hotel 1
- Exchange Roller Mills 2
- Grand Hotel 4
- Hob's House 4
- Hughes, T. Tobacco Stemmeries 3
- Holland & Rose Machine Co. 3
- Holliman & Son, Tobacco Stemmeries 3
- Hotel Lucille 1
- Hester Printing Co., The 2
- Jarris, A. B. Tobacco Stemmeries 3
- Jones Buggy Co., The 2
- L & N. R. L. Deposits 4
- Madisonville Milling Co. 2
- Steam Laundry 2
- Wagon Co. 2
- Woolen Mill, Corn 5
- Crusher and Hensley Mill 2
- Methodist Episcopal Church 2
- Marion Open House 2
- New Belmont Hotel 2
- Owen, C. E. Tobacco Stemmeries 3
- Patman's Wagon Works 4
- Dumbarton, J. M. Tobacco Stemmeries 3
- Panther's Store 2
- Pritchard & Co., Mills 2
- Public School 2
- Ramsey Bros. & Co. Tobacco Stem-
meries 1
- Ruby Co., Planing Mill and Limber
Yard 1
- Sprung Lumber Co. 2
- Tidwell, A. Tobacco Stemmeries 1
- Toth, F., Roller Mills 2
- Union Tobacco 3
- Wolf Roller Mills 5



KEY
 CONCRETE FLOOR OR PAVEMENT
 METAL CORNER
 BRICK WALLS
 FRAME PARTITION
 OPENING WITH IRON DOOR
 IRON DOOR
 WINDOWS & IRON SHUTTERS
 WINDOWS WITH SHUTTERS
 WINDOWS WITH SHUTTERS
 WINDOWS WITH SHUTTERS
 WINDOWS WITH SHUTTERS
 STAIRS
 BUILDINGS COLORED YELLOW ARE FRAME
 BRICK
 GREEN
 IRON
 BRICK
 GREEN
 SPECIALS
 ① INDICATE RELATIVE HEIGHTS
 ② FIRE STATION, AS SHOWN ON KEY MAP
 ALTERNATE STREET NUMBERS ARE ACTUAL
 CONSECUTIVE STREET NUM ARE ARBITRARY

ARCH



MAIN CROSS OR CENTRE



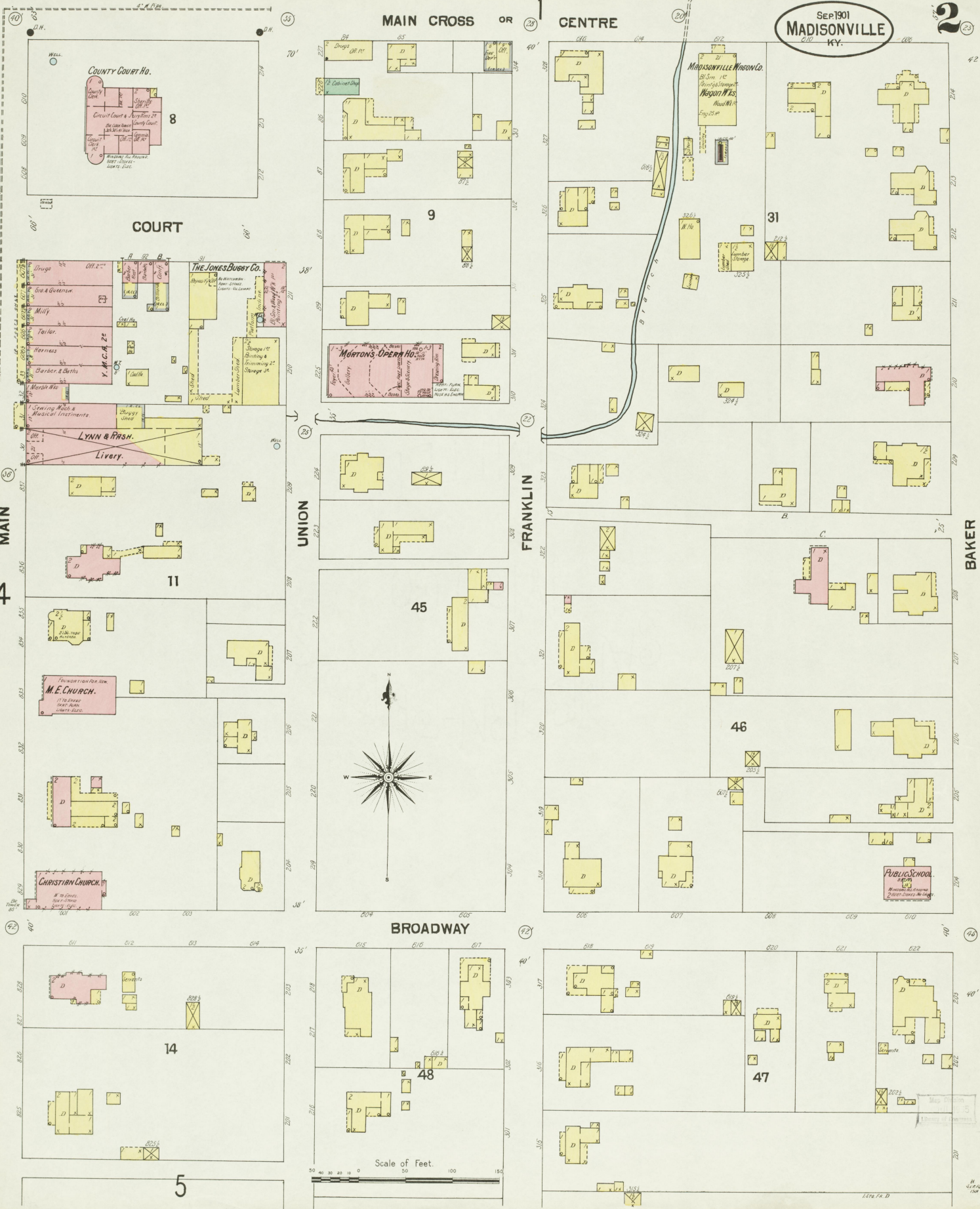
Scale of Feet.
 0 50 100 150

BAKER

FRANKLIN

MAIN CROSS OR CENTRE

MAIN CROSS OR CENTRE



4

5

COURT

COUNTY COURT HO.

11

M.E. CHURCH.

CHRISTIAN CHURCH.

14

5

UNION

FRANKLIN

BROADWAY

45

48

FRANKLIN

BAKER

31

46

47

MAIN CROSS

CENTRE

OR

8

9

9

11

11

45

45

45

45

45

45

45

45

45

31

31

31

31

31

31

31

31

31

31

31

31

31

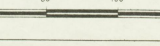
31

31

31

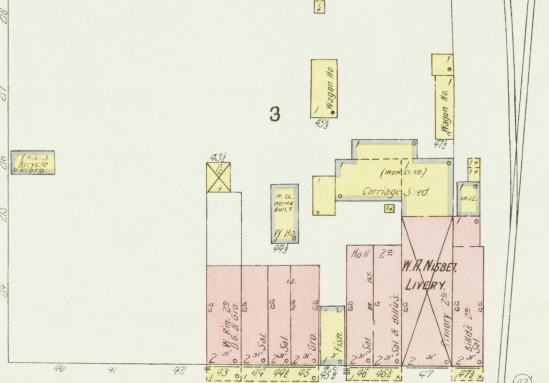
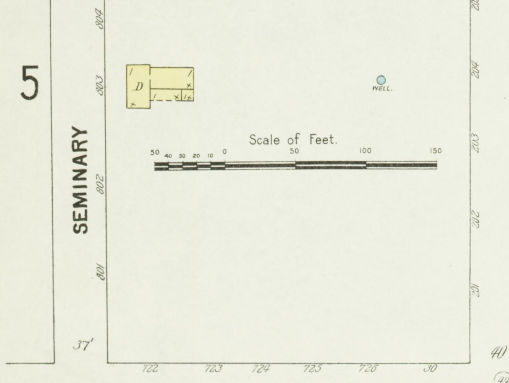
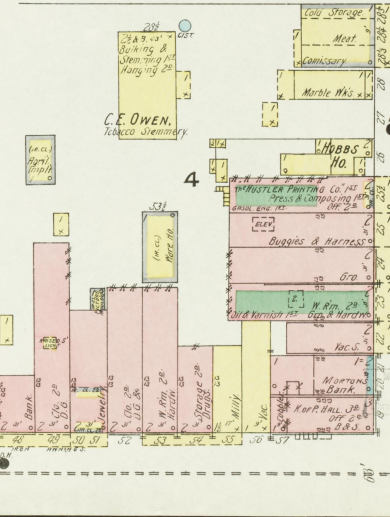
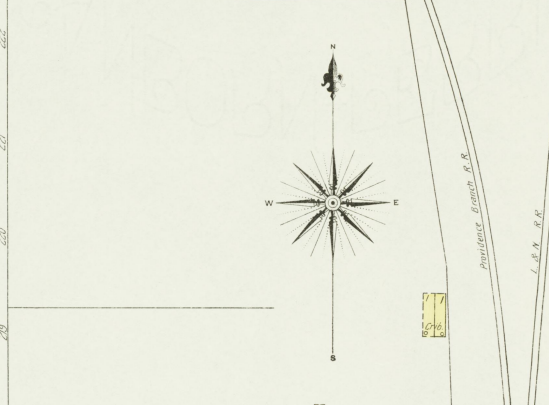
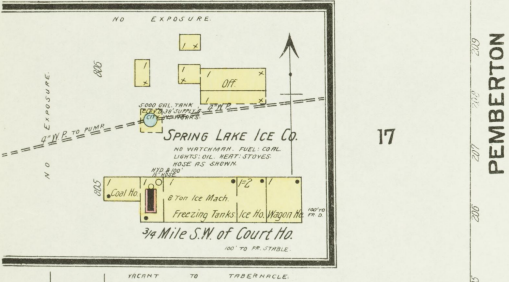
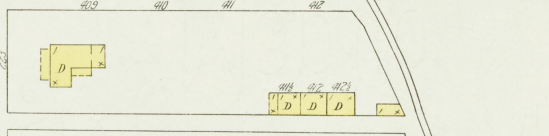
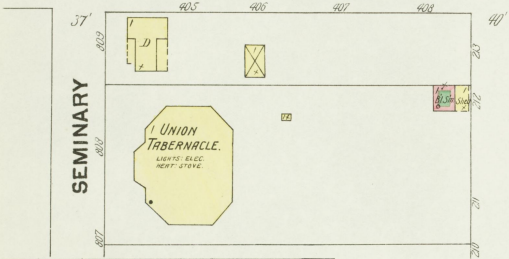
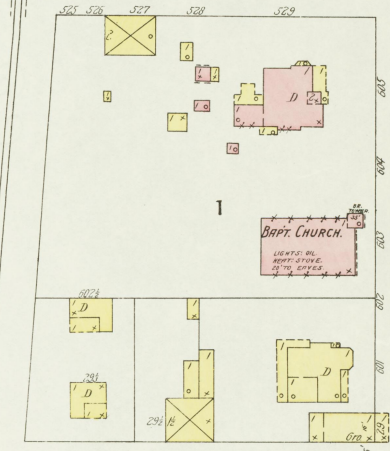
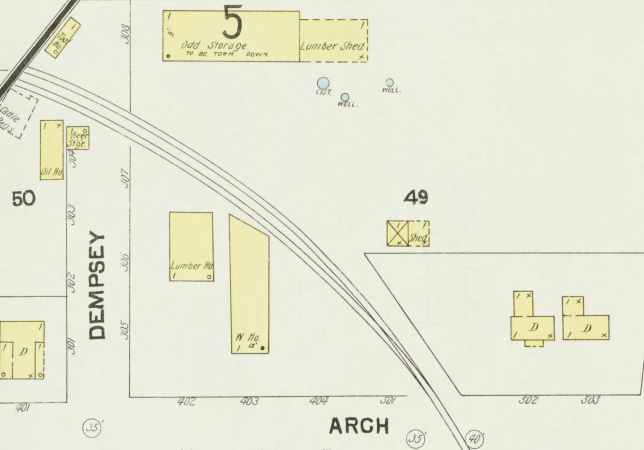
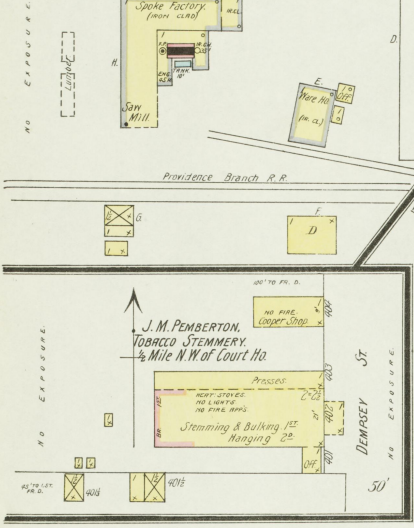
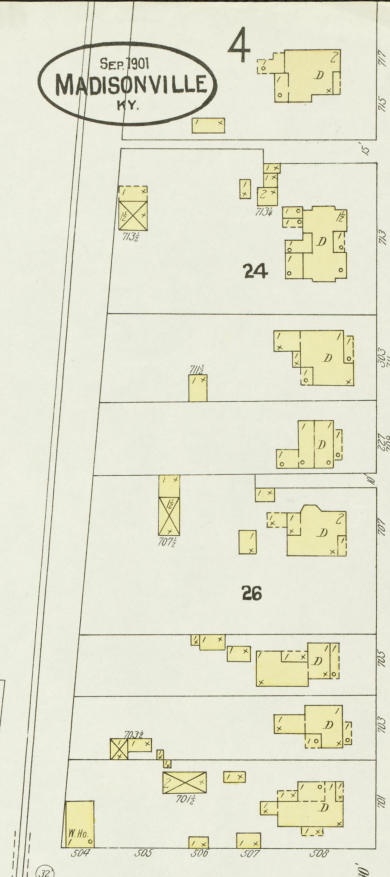
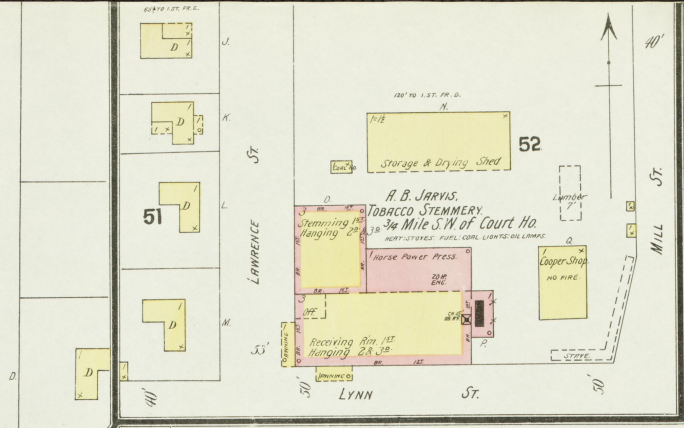
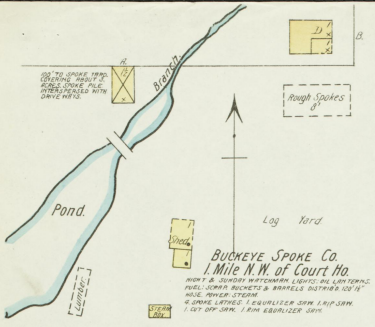
31

Scale of Feet.



SEP 1901
MADISONVILLE
KY.

3



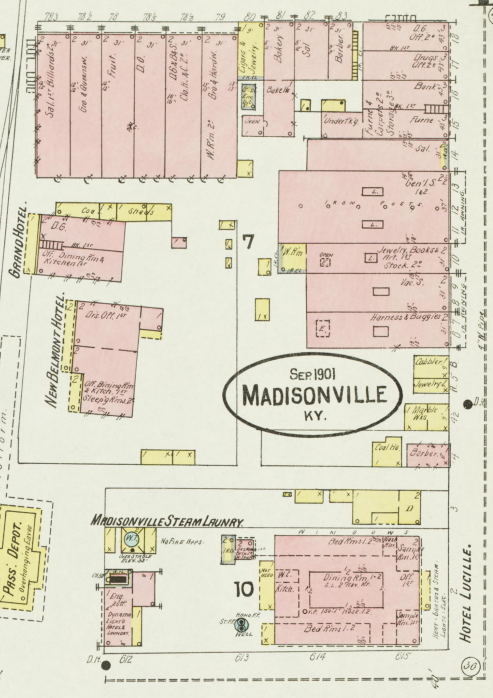
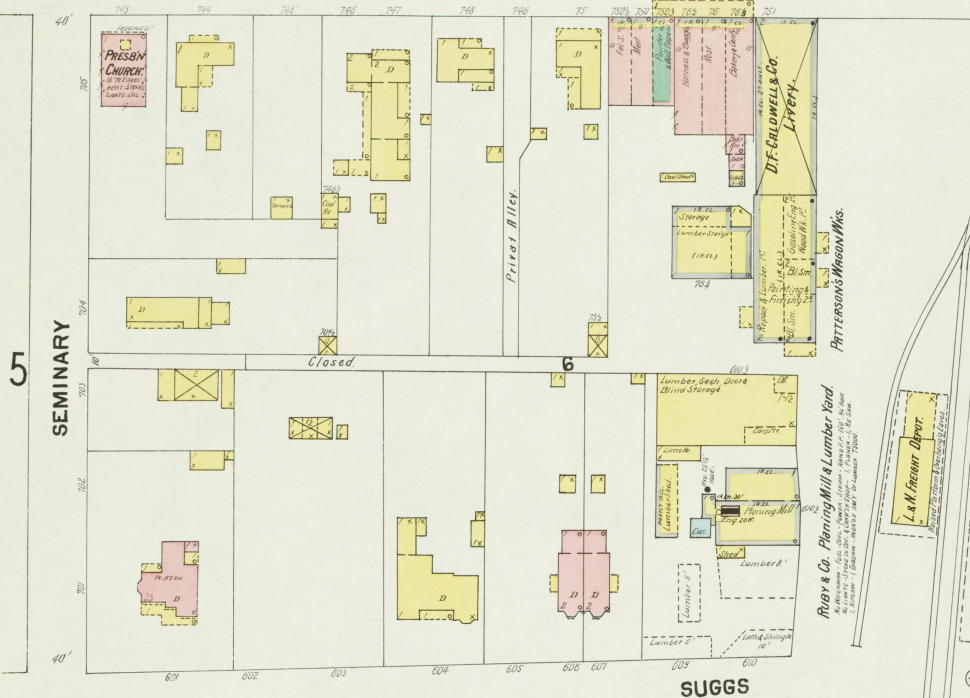
MAIN CROSS 4th CENTRE

3

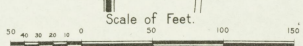
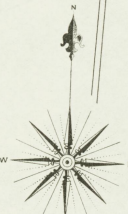
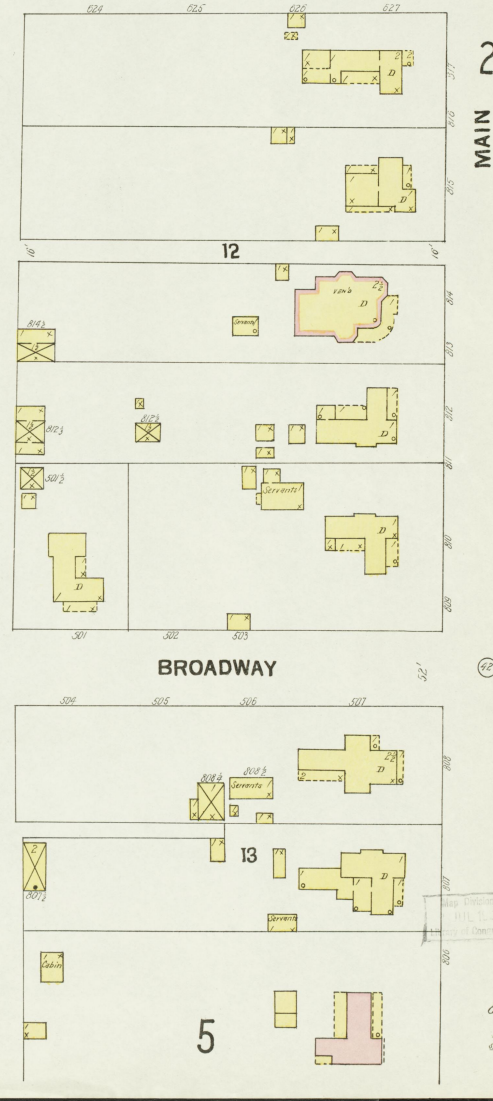
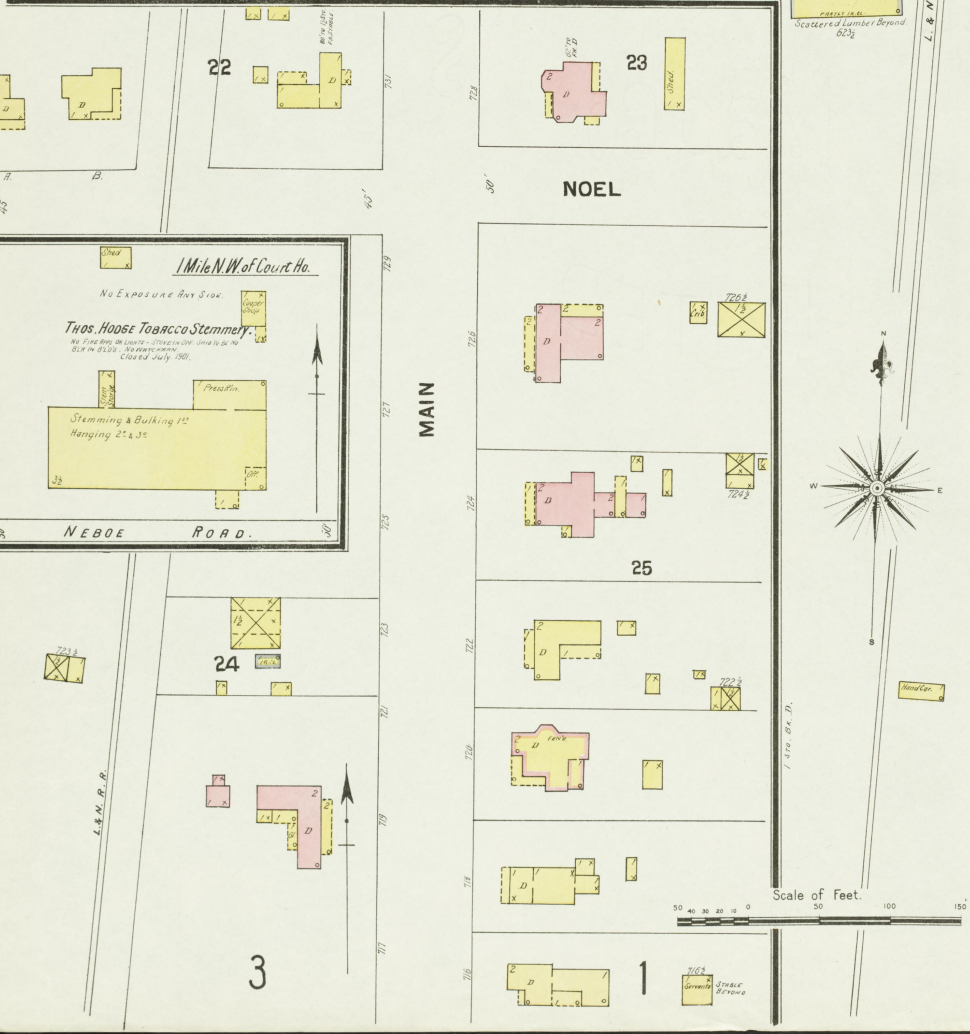
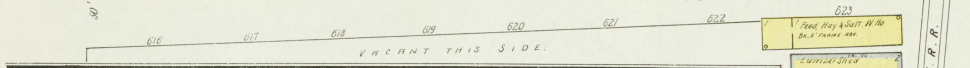
MAIN-CROSS CENTRE

4

5 SEMINARY

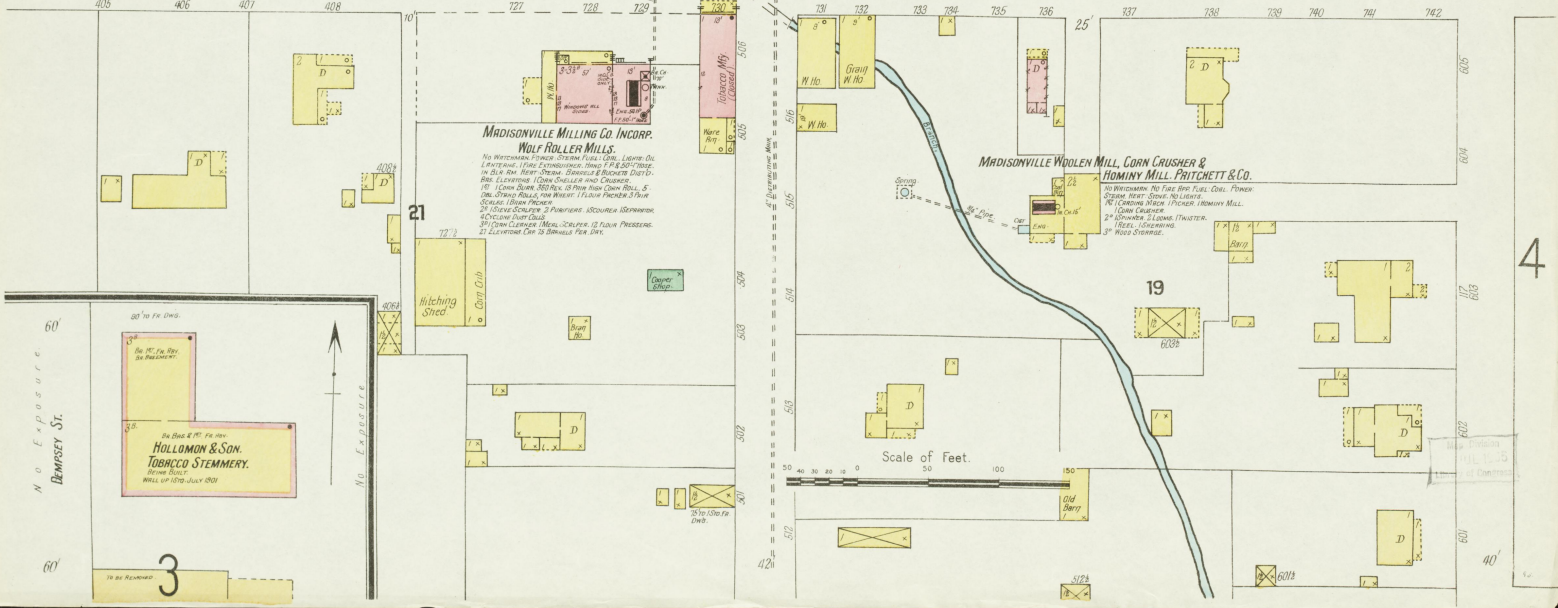
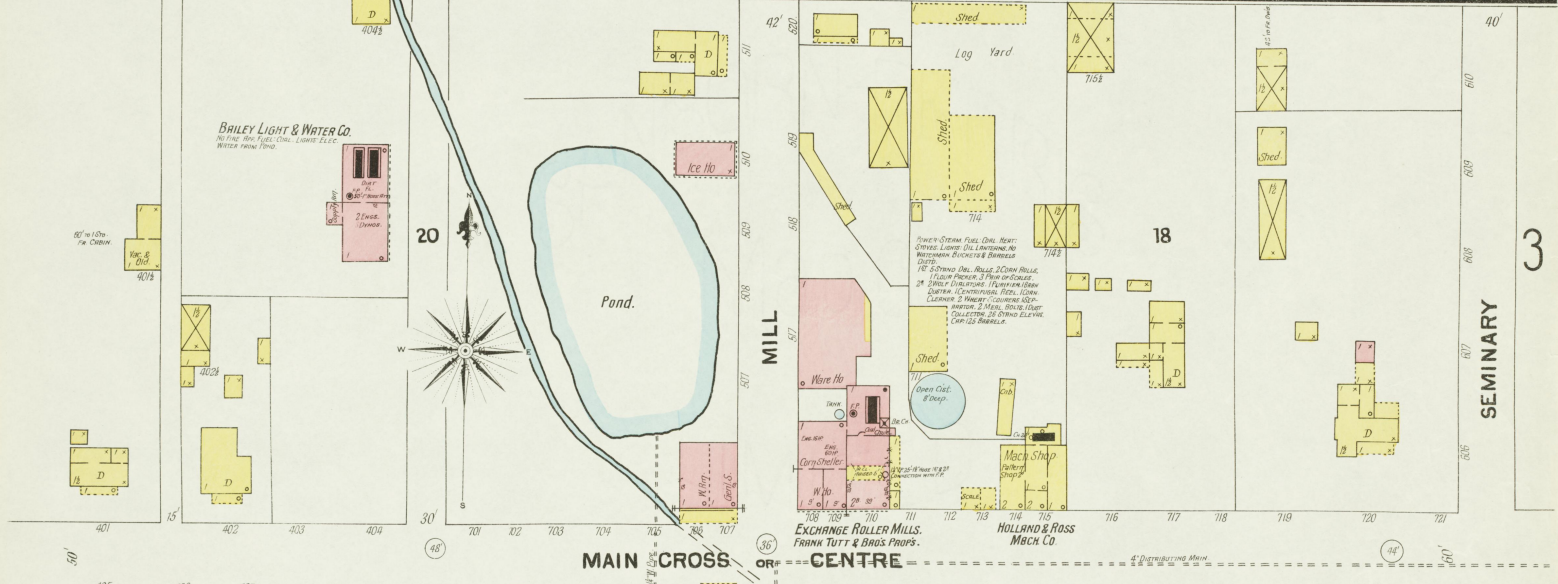
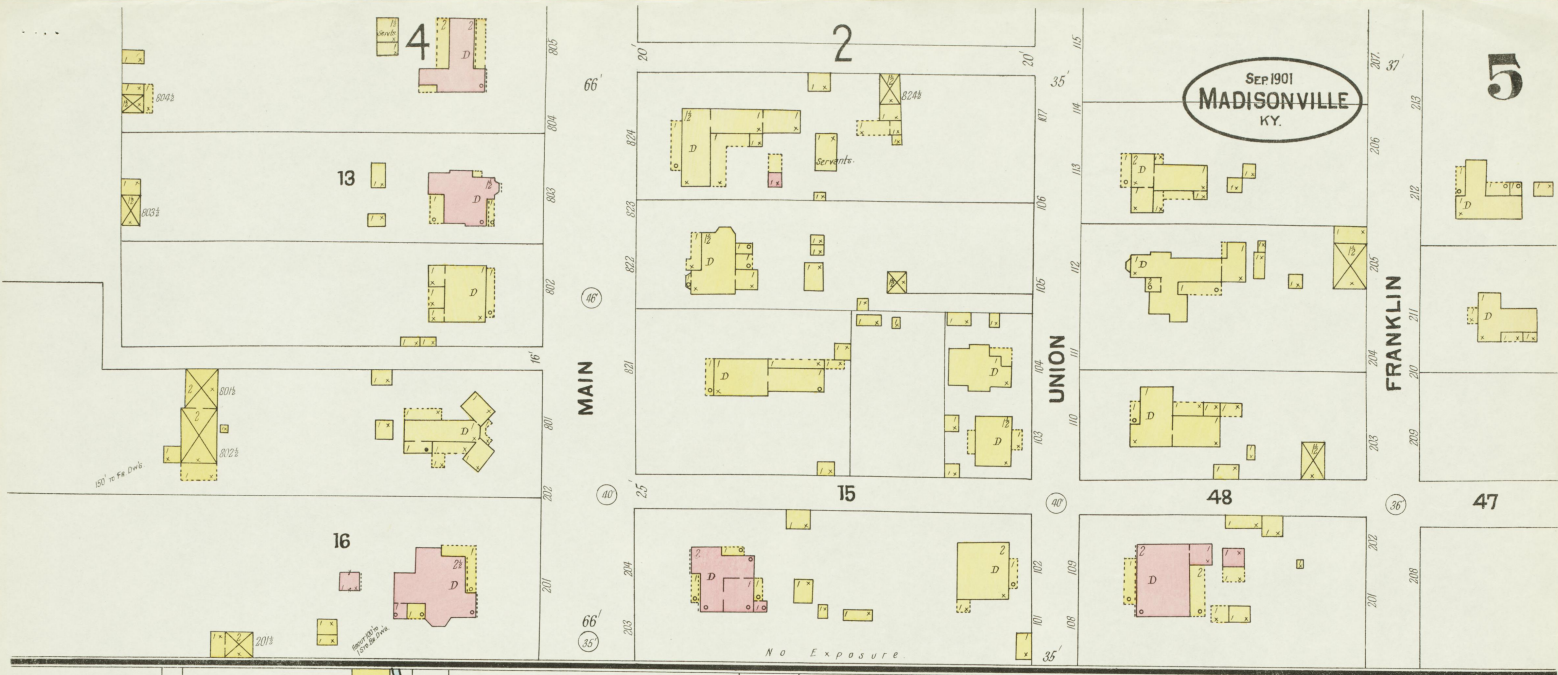


SUGGS

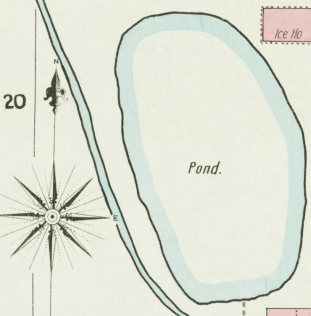


Map Division
MIL. 11-15
U.S. Dept. of Commerce

SEP 1901
MADISONVILLE
KY.



BAILEY LIGHT & WATER CO.
No. 1000 Main St. Madisonville, Ky.
Water Works Plant



MAIN CROSS OR CENTRE

EXCHANGE ROLLER MILLS.
FRANK TUTT & BROS. PROP.

HOLLAND & ROSS
Mach CO

MADISONVILLE MILLING CO. INCORP.
WOLF ROLLER MILLS.

No. 1000 Main St. Madisonville, Ky.
No. 1000 Main St. Madisonville, Ky.
No. 1000 Main St. Madisonville, Ky.
No. 1000 Main St. Madisonville, Ky.
No. 1000 Main St. Madisonville, Ky.
No. 1000 Main St. Madisonville, Ky.
No. 1000 Main St. Madisonville, Ky.
No. 1000 Main St. Madisonville, Ky.
No. 1000 Main St. Madisonville, Ky.
No. 1000 Main St. Madisonville, Ky.
No. 1000 Main St. Madisonville, Ky.

MADISONVILLE WOOLEN MILL, CORN CRUSHER &
HOMINY MILL. FRITZETT & CO.

No. 1000 Main St. Madisonville, Ky.
No. 1000 Main St. Madisonville, Ky.
No. 1000 Main St. Madisonville, Ky.
No. 1000 Main St. Madisonville, Ky.
No. 1000 Main St. Madisonville, Ky.
No. 1000 Main St. Madisonville, Ky.
No. 1000 Main St. Madisonville, Ky.
No. 1000 Main St. Madisonville, Ky.
No. 1000 Main St. Madisonville, Ky.
No. 1000 Main St. Madisonville, Ky.

HULLOMAN & SON
TOBACCO STEMMERY.

Scale of Feet.

No Exposure
DEMWSEY ST.

3

4