



Keep Our
Forests
CLEAN!

The Forest Service, U.S. Department of Agriculture, is dedicated to the principle of multiple use management of the Nation's forest resources for sustained yields of wood, water, forage, wildlife, and recreation. Through forestry research, cooperation with the States and private forest owners, and management of the National Forests and National Grasslands, it strives—as directed by Congress—to provide increasingly greater service to a growing Nation.

THE National Forests IN FLORIDA

APALACHICOLA National Forest ● OCALA National Forest ● OSCEOLA National Forest

Florida's National Forests

Florida's three National Forests are part of the 174 National Forests and National Grasslands totalling 187 million acres in 44 states and Puerto Rico. The Ocala National Forest, established November 24, 1908, is the oldest National Forest east of the Mississippi River. The Osceola was established July 10, 1931, and the Apalachicola, May 13, 1936.

The National Forests in Florida are administered by a Forest Supervisor and five District Rangers. Additional information can be obtained by contacting any of these offices.

Wilderness

Bradwell Bay Wilderness is the only National Forest component in Florida in the Wilderness Preservation System. The 23,432-acre area on the Apalachicola National Forest is mainly a large fresh water swamp with several hundred acres of pine, mixed hardwoods, and titi. A sheet of tannin-tinted water, only a few inches deep, moves slowly across the inner area. Visitors not familiar with this type of terrain and Florida's climate are advised to check with the District Ranger in Crawfordville before venturing into the interior.

Recreation

The National Forests in Florida receive more visitor days use than any other National Forest in the East. Florida's climate allows practically year-round enjoyment, and opportunities exist for almost every kind of forest-oriented recreation activity. Visitors can find their place whether it be in developed recreation areas or a quiet spot away from everything. With few exceptions, camping is permitted in the general forest area except during hunting season when restricted to designated areas.

MAJOR RECREATION AREAS

APALACHICOLA NATIONAL FOREST

1. Silver Lake: From Tallahassee, take FL 20 west for 9 miles, turn left onto FL 260 for 3 miles.
2. Lost Lake: From Tallahassee, take FL 373 south for 7 miles, turn right onto FS 375 for 1/2 mile.

3. Trout Pond (For the Handicapped): From Tallahassee, take FL 373 south for 9 miles.
4. Wright Lake: From Bristol, take FL 12 south for 21 miles, turn right onto FL 65 for 12 miles, turn right onto FS 101 for 2 miles.
5. Camel Lake: From Bristol, take FL 12 south for 12 miles, turn left onto FS 105 for 3 miles.

OSCEOLA NATIONAL FOREST

6. Ocean Pond: From Lake City, take US 90 east for 15 miles, turn left onto FS 250-A for 4 miles, turn left into area (FS 268).
7. Olustee Beach: From Lake City, take US 90 east for 13 miles, turn left onto FL 231 at Olustee for 1 mile.

OCALA NATIONAL FOREST

8. Johnson Field: From Silver Springs, take FL 40 east for 5 miles, turn left onto FS 314 for 18 miles, turn left onto FL 19 for 9 miles, turn left onto FS 77.
9. Fore Lake: From Silver Springs, take FL 40 east for 5 miles, turn left onto FL 314 for 6 miles.
10. Mill Dam: From Silver Springs, take FL 40 east for 15 miles, turn left onto FS 58 for 1 mile.
11. Juniper Springs: From Silver Springs, take FL 40 east for 22 miles.
12. Big Scrub: From Silver Springs, take FL 40 east for 19 miles, turn right onto FS 88 for 9 miles; or from Eustis, take FL 19 north for 14 miles, turn left onto FS 73 for 7 miles.
13. Alexander Springs: From Silver Springs, take FL 40 east for 31 miles, turn right onto FL 445 for 6 miles; or from Eustis, take FL 19 north for 14 miles, turn right onto FL 445 for 6 miles.
14. Clearwater Lake: From Eustis, take FL 19 north for 8 miles, turn right onto FL 42 for 7 miles; or from Deland, take FL 44 west for 3 miles, turn right onto FL 42 for 12 miles.
15. Lake Dorr: From Eustis, take FL 19 north for 12 miles.
16. Salt Springs: From Silver Springs, take FL 40 east for 5 miles, turn left onto FL 314 for 18 miles, turn left onto FL 19 for 1/2 mile; or from Eustis, take FL 19 north for 39 miles.



ADDRESSES

Forest Supervisor
National Forests in Florida
P.O. Box 13549
Tallahassee, FL 32308

Apalachicola National Forest

District Ranger P.O. Box 578 Bristol, FL 32321	District Ranger P.O. Box 309 Crawfordville, FL 32327
--	--

Ocala National Forest

District Ranger Rt. 2, Box 701 Silver Springs, FL 32688	District Ranger 1551 Umatilla Road Eustis, FL 32726
---	---

Osceola National Forest

District Ranger
Rt. 7, Box 95
Lake City, FL 32955

MAP DEPT.

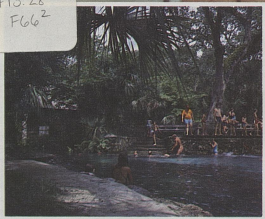
FEB 1983

University of Ky. Library

DEPOSITORY COPY
SHIPPING LIST DATE
JAN 31 1983
DO NOT DISCARD

FOREST VISITOR GUIDE
NATIONAL FORESTS IN FLORIDA

A 13.28
F662



Forest Service
Southern Region

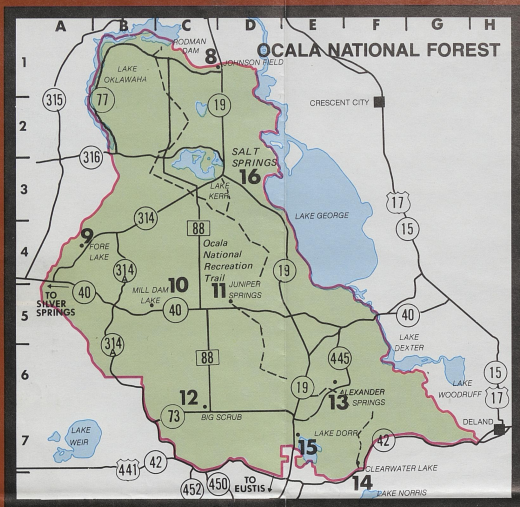
United States
Department of
Agriculture

G3931 .K1 1983 .U5

G 3931 .K1 1983 .U5



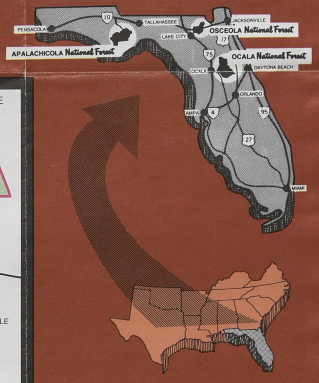
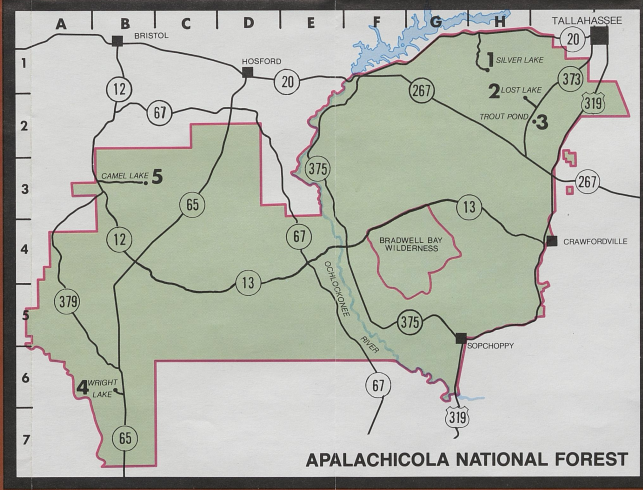
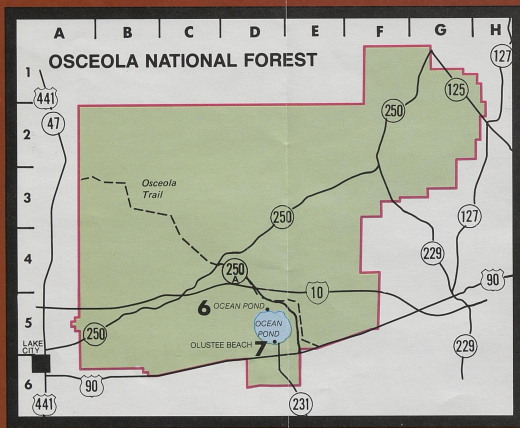
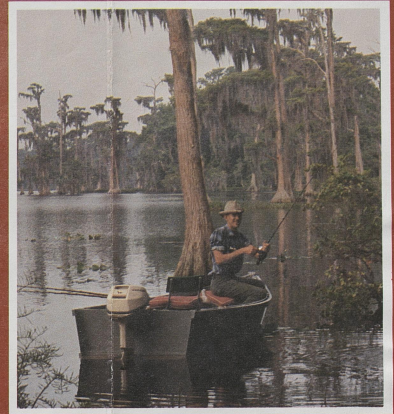
3 0425 0280301 S



National Forests in Florida

KEY TO MAJOR RECREATION AREAS

	Fish Area	Camping	Swimming	Picnicking	Drinking Water	Interpretive Trail	Boat Launch	Restrooms	Showers	Dumping Station
Apalachicola National Forest										
1. Silver Lake (H-1)	•	•	•	•	•	•	•	•	•	•
2. Lost Lake (H-2)	•	•	•	•	•	•	•	•	•	•
3. Trout Pond (For the Handicapped) (H-2)	•	•	•	•	•	•	•	•	•	•
4. Wright Lake (B-6)	•	•	•	•	•	•	•	•	•	•
5. Camel Lake (B-3)	•	•	•	•	•	•	•	•	•	•
Osceola National Forest										
6. Ocean Pond (D-5)	•	•	•	•	•	•	•	•	•	•
7. Olustee Beach (D-5)	•	•	•	•	•	•	•	•	•	•
Ocala National Forest										
8. Johnson Field (C-1)	•	•	•	•	•	•	•	•	•	•
9. Fore Lake (A-4)	•	•	•	•	•	•	•	•	•	•
10. Mill Dam (B-5)	•	•	•	•	•	•	•	•	•	•
11. Juniper Springs (D-5)	•	•	•	•	•	•	•	•	•	•
12. Big Scrub (C-6)	•	•	•	•	•	•	•	•	•	•
13. Alexander Springs (E-6)	•	•	•	•	•	•	•	•	•	•
14. Clearwater Lake (F-7)	•	•	•	•	•	•	•	•	•	•
15. Lake Dorr (E-7)	•	•	•	•	•	•	•	•	•	•
16. Salt Springs (D-3)	•	•	•	•	•	•	•	•	•	•



More detailed maps may be purchased at each District Ranger's office or the Forest Supervisor's office.