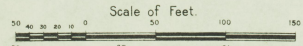
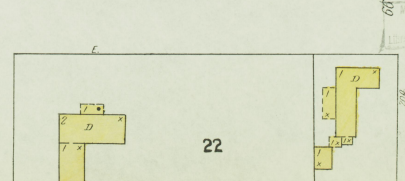
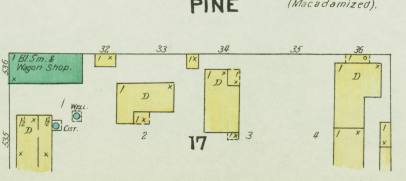
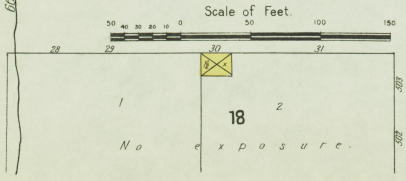
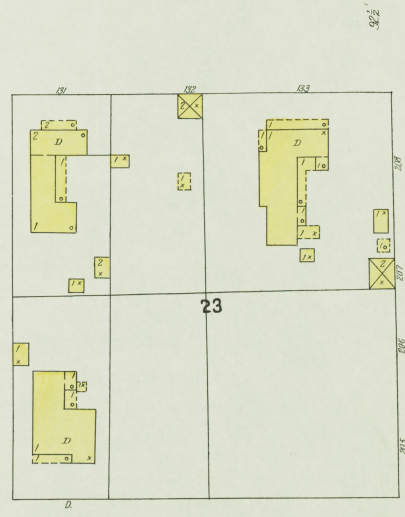
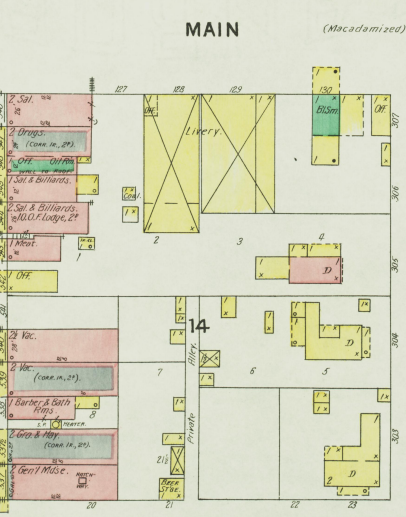
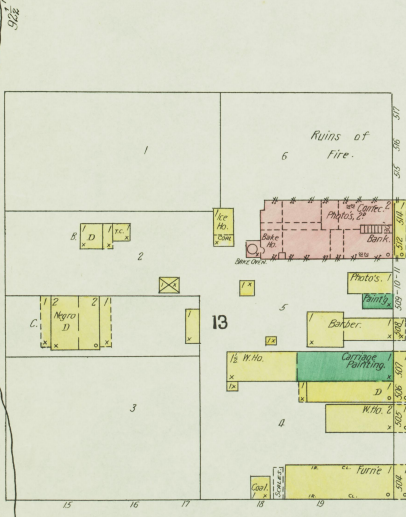
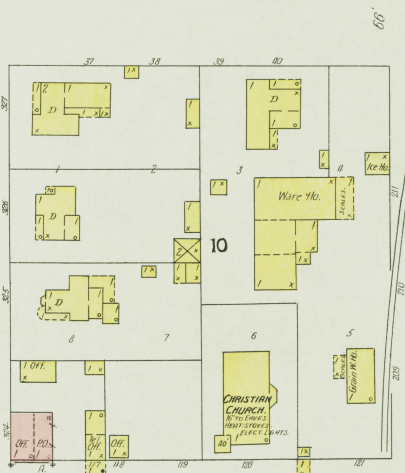
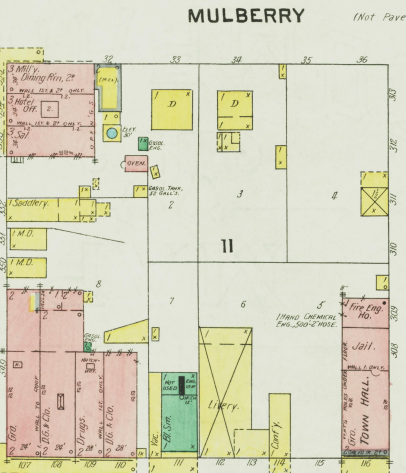
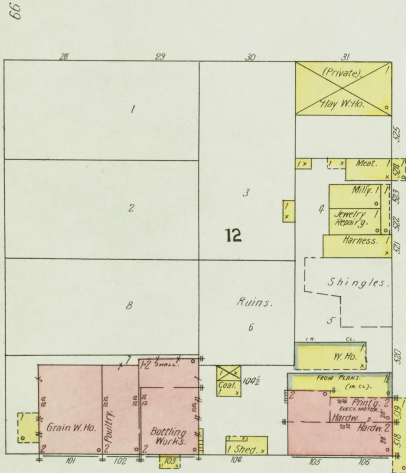
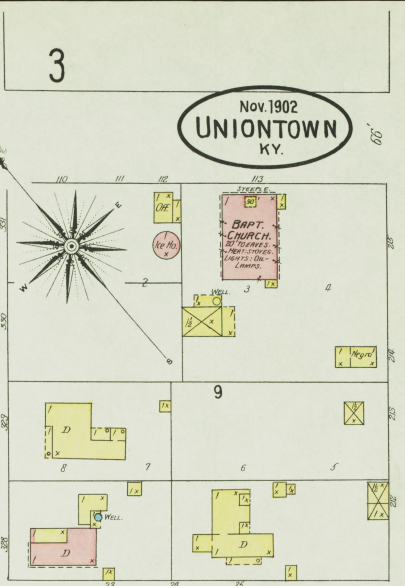
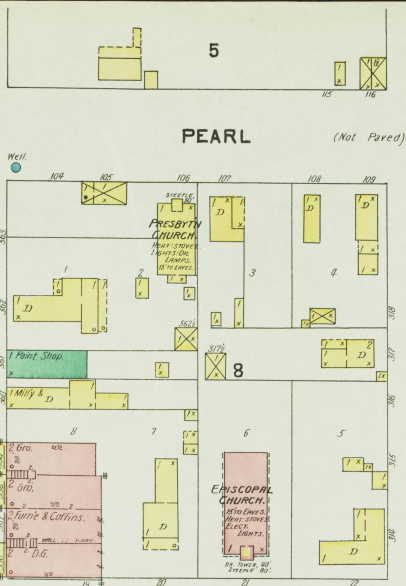
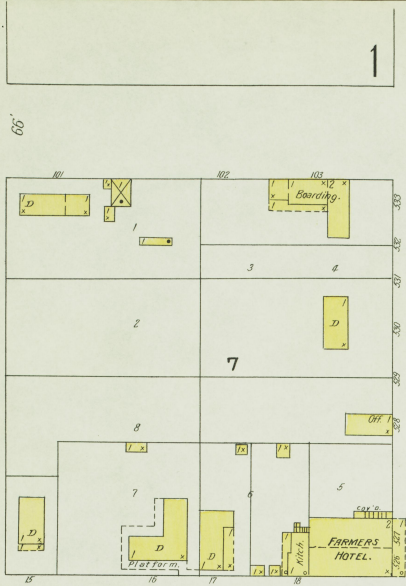




Nov. 1902  
**UNIONTOWN**  
KY.



Ohio River Beyond.

200' to  
Whore Court.

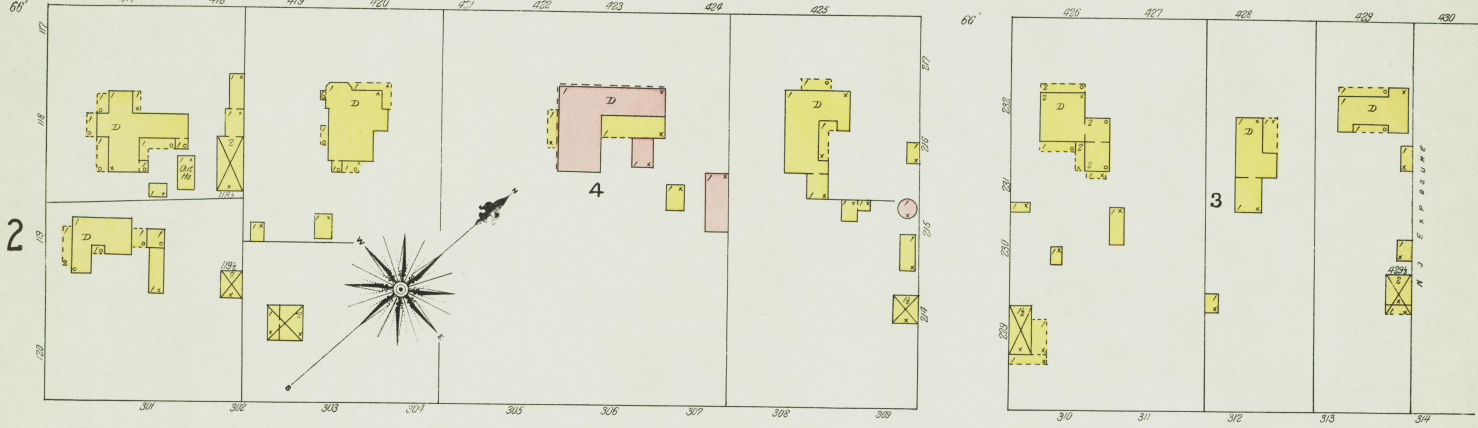
2

4

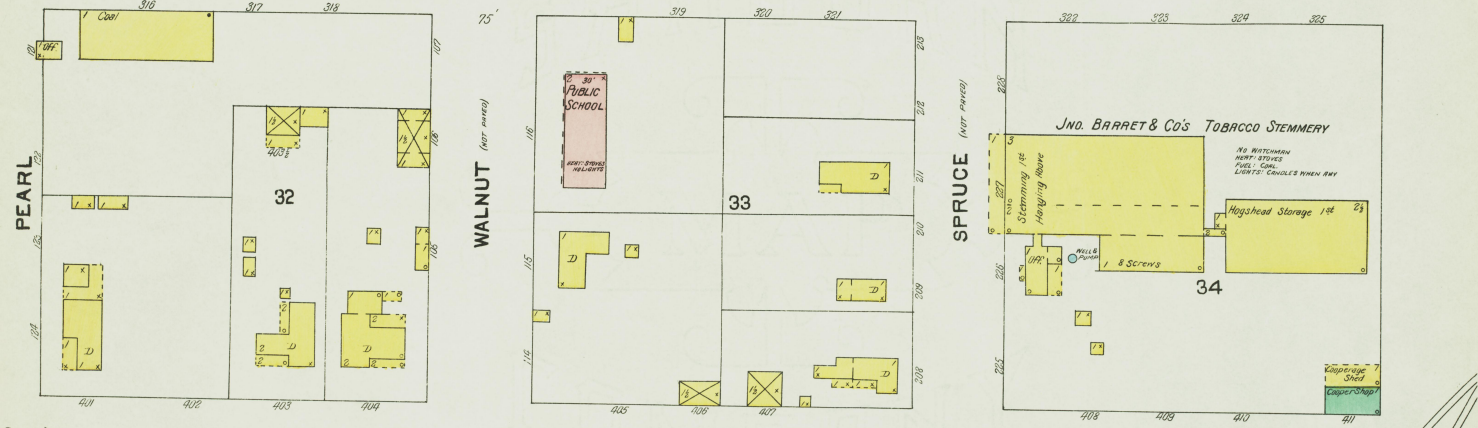
4th  
ST.

WALNUT ST.  
66'

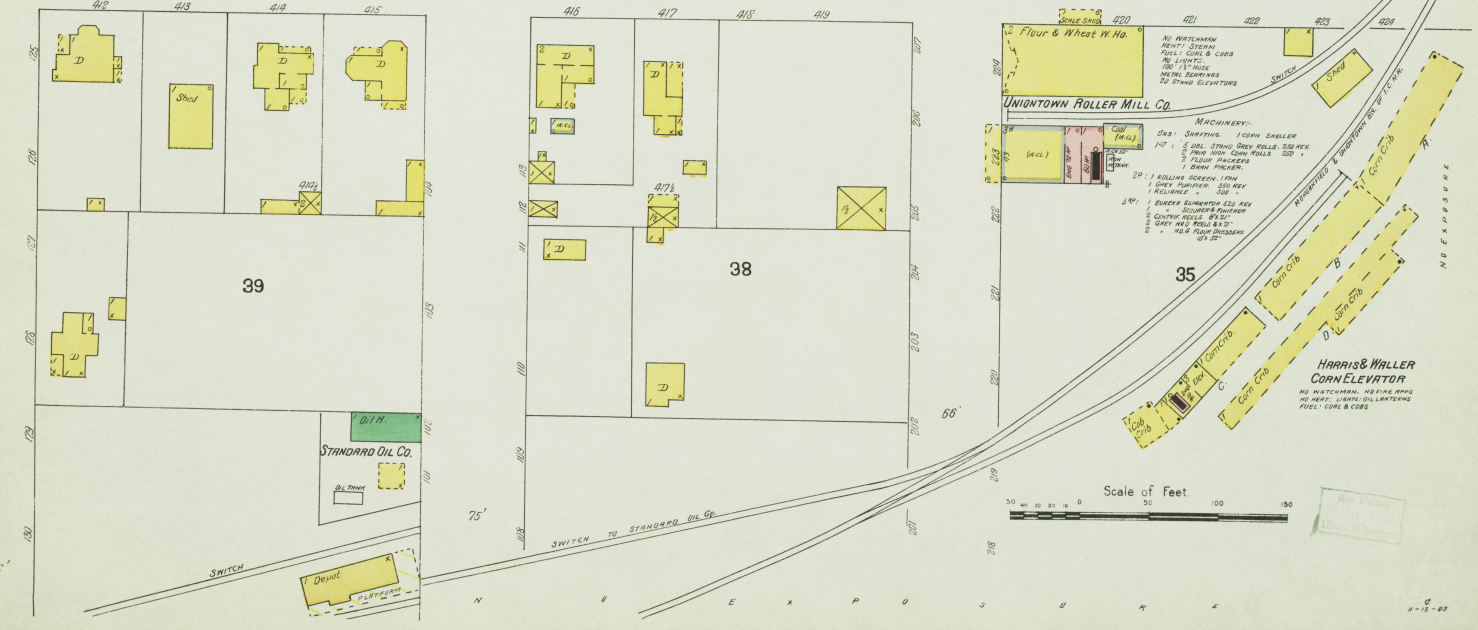
3<sup>RD</sup> ST. (NOT PAVED)

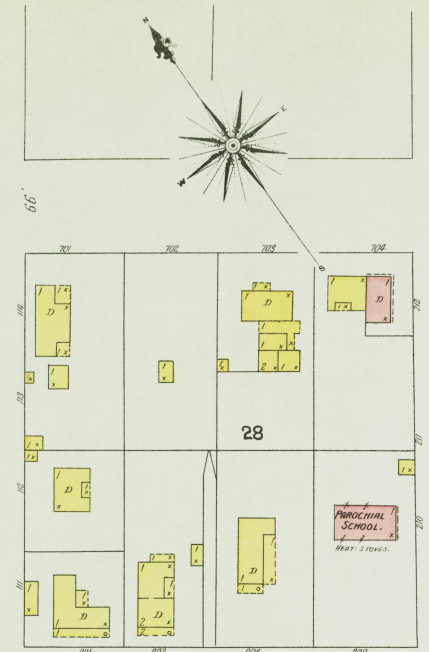


4<sup>TH</sup> ST. (NOT PAVED)



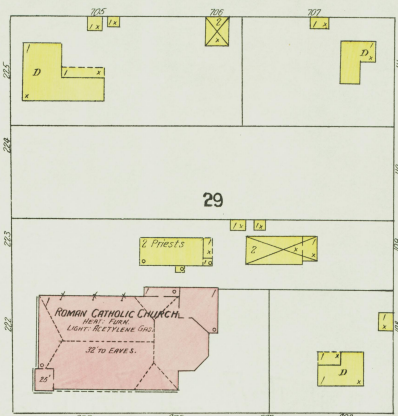
5<sup>TH</sup> ST. (MICROGRAVISED)



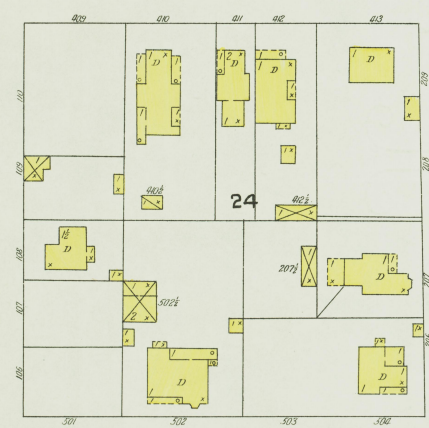


3

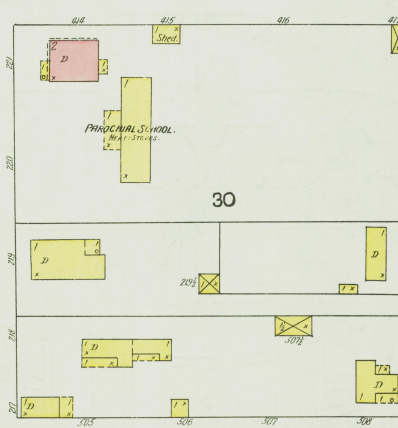
PEARL (Not Paved)



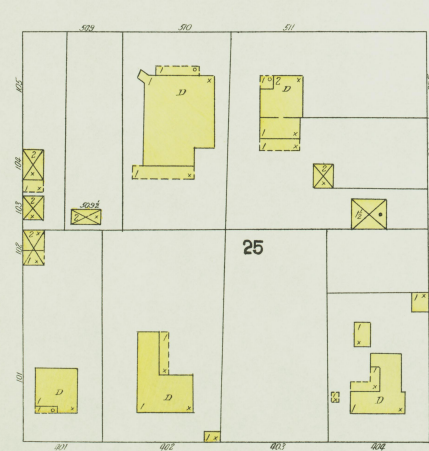
MULBERRY (Macadamized)



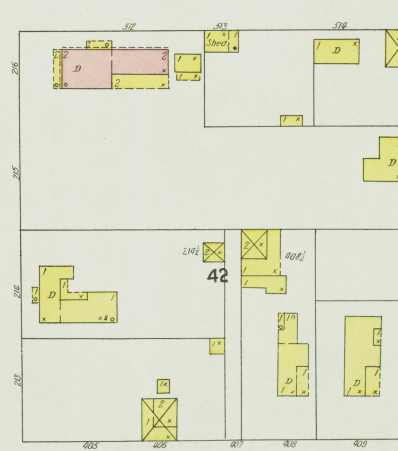
ST. (Not Paved)  
5TH



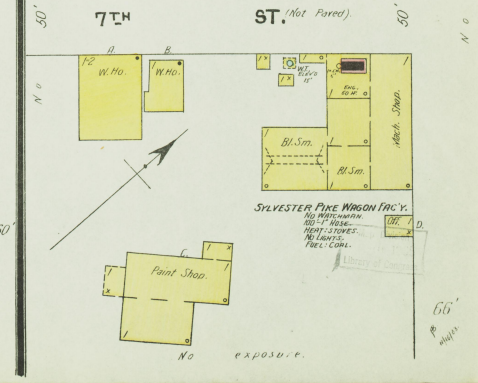
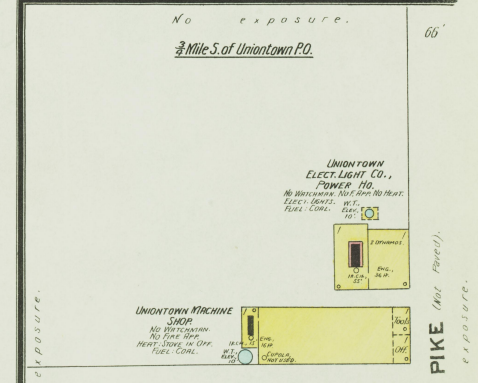
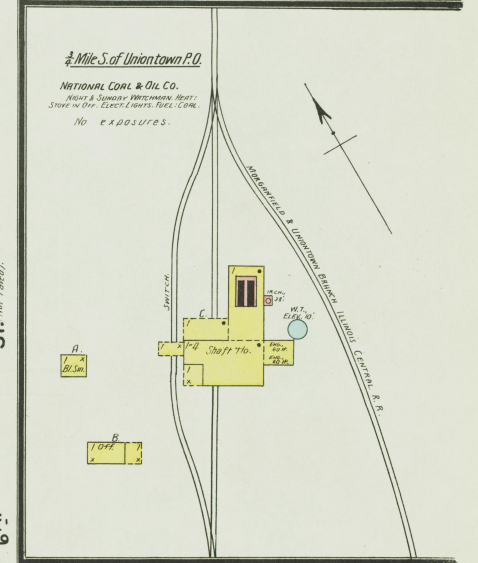
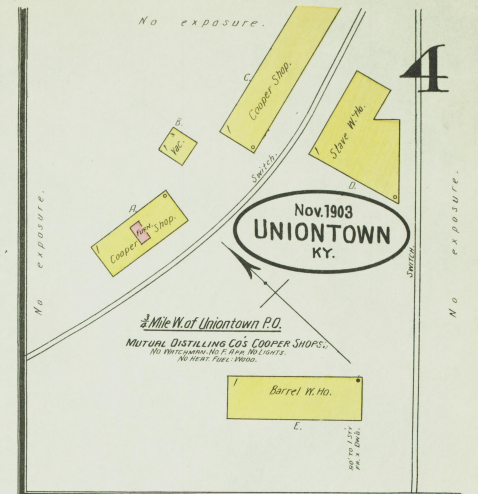
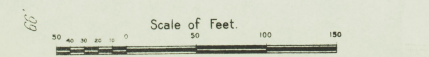
MAIN (Macadamized)



60'



PINE (Macadamized)



4

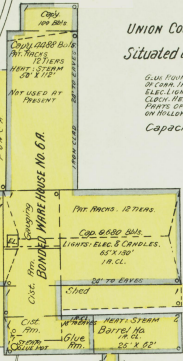
PIKE (Not Paved)

66'

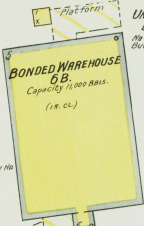
5

UNION COUNTY KENTUCKY DISTILLING CO.  
BONDED W.H. NO. 6A

Situated on Ohio River 3/4 Mile S.W. of Uniontown P.O.  
GLASS DOWN IN S.W. CORNER OF BUILDING...  
Capacity: 12,368 BALS. PVT. HOLES: 12 TIERS.



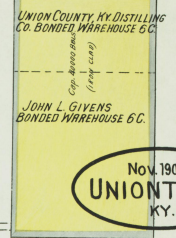
5



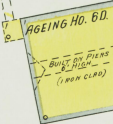
UNION COUNTY KY. DISTILLING CO.  
BONDED W.H. NO. 6B  
NO MATCHING, 12 WATER BALS. 12  
BUCKETS DIST. NO. HEAT, NO LIGHTS.

UNION COUNTY KY. DISTILLING CO.  
BONDED W.H. NO. 6C  
NO MATCHING, 8 WATER BALS. 16  
BUCKETS DIST. NO. HEAT, NO LIGHTS.

JOHN L. GIVENS  
BONDED W.H. NO. 6C  
NO MATCHING, 8 WATER BALS. 16  
BUCKETS DIST. NO. HEAT, NO LIGHTS.



Nov. 1903  
UNIONTOWN  
KY.

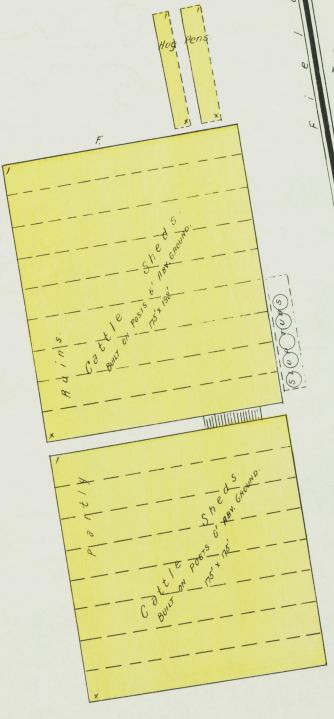
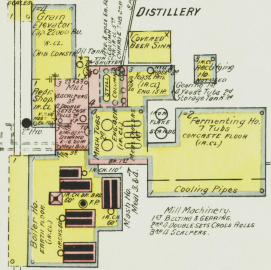


JOHN L. GIVENS  
AGING HO. NO. 6D  
NO MATCHING, 8 WATER BALS. 16  
BUCKETS DIST. NO. HEAT, NO LIGHTS.

KENTUCKY DISTILLERIES & WAREHOUSE CO.  
RUN AS UNION COUNTY DISTILLING CO. INCORP.  
FORMERLY STANDARD DISTILLING & DISTRIBUTING CO., ALSO MUTUAL DISTILLING CO.

REGISTERED DISTILLERY NO. 6, 2<sup>ND</sup> DIST. UNION CO., KY.

BOTH DISTILLERIES CLASSIFIED AS ONE BY GOVERNMENT...  
PRODUCTION CAPACITY...  
4 NIGHT MATCHING...  
EQUIPMENT...  
WATER SUPPLY...  
DISTILLATION PROCESS...



5

