

South Fork River.

WATER FACILITIES:

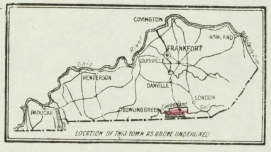
Gravity & direct pumping system. Supply from South Fork River...  
Water plant at New Richmond...  
Fire Dept: Chief, one assistant, three cars with 800 & 300 lb. hose respectively...

SABORN MAP COMPANY. POPULATION 1500. BURNSIDE KENTUCKY JANUARY 1914. PULLASH COUNTY, KENTUCKY. BROADWAY, NEW YORK. FEB 24 1914. REF 26217

F. & O. CEDAR WORKS, LTD., INC. PENCIL SLATS. NIGHT & SUNDAY WATCHMEN. BANGOR CLOCK & STATIONS...  
This block contains detailed text about the pencil slats business and watchmen services.

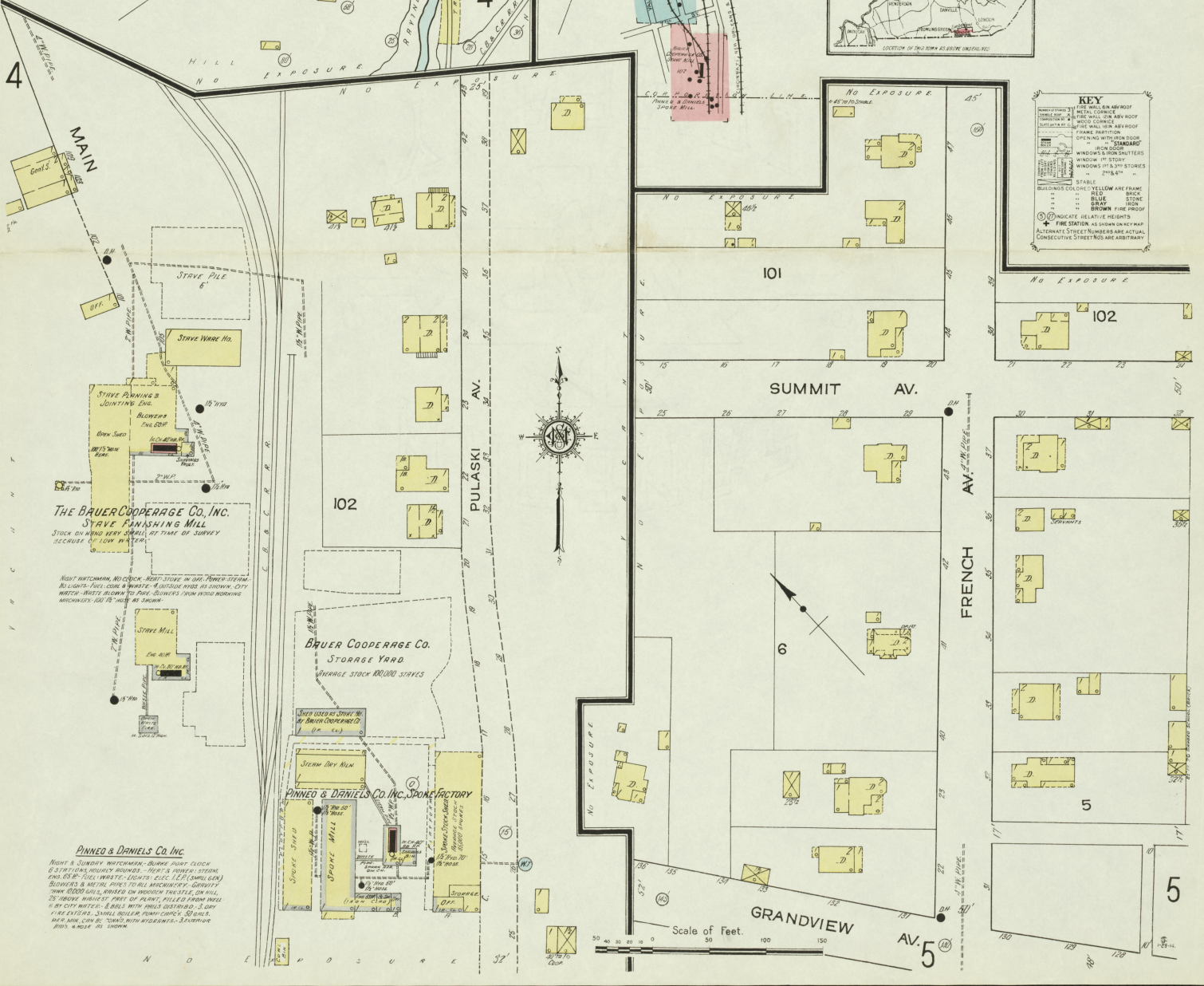
INDEX

Table with columns: STREETS, SHEET, and K. SHEET. Lists street names and corresponding sheet numbers for various parts of the map.



KEY

KEY describing map symbols: Stable (yellow), Business color (yellow), Windows (black line), Fire station (red square), etc.



Scale of Feet. 0 50 100 150

THE BAUER COOPERCAGE CO., INC. STAVE FINISHING MILL. STOCK OWNED BY DANIEL AT TIME OF SURVEY BECAUSE OF LOW WATER.

BAUER COOPERCAGE CO. STORAGE YARD. WAREHOUSE STOCK 80000 STAVES.

PINNED & DANIELS CO. INC. SPOKE FACTORY. NIGHT & SUNDAY WATCHMEN. BANGOR CLOCK & STATIONS...  
This block contains detailed text about the spoke factory and watchmen services.



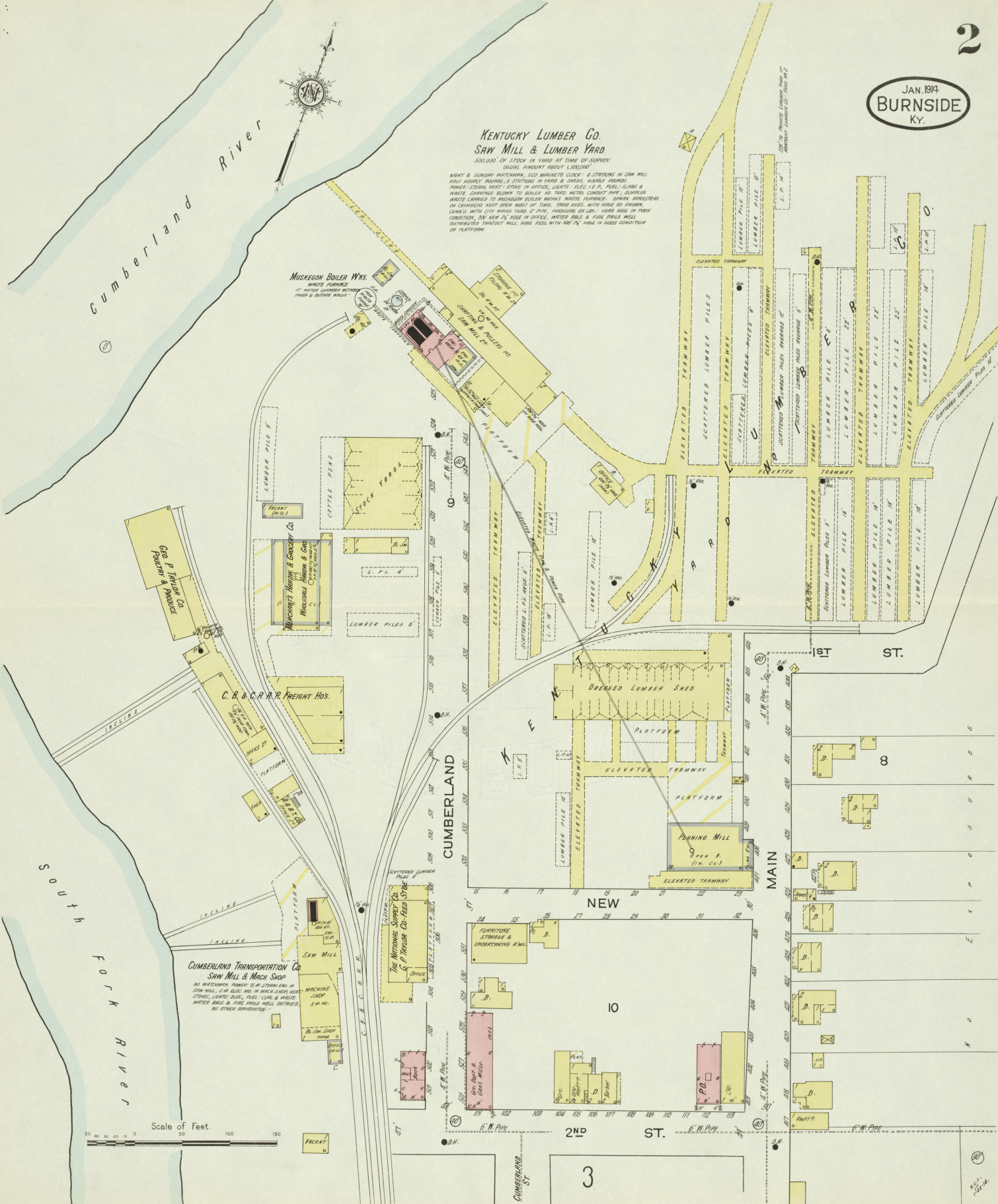
JAN. 1914  
BURNSIDE  
KY.

### Kentucky Lumber Co. SAW MILL & LUMBER YARD

500,000 OF STOCK IN YARD AT TIME OF SURVEY.  
SOCIAL PLANNING REPORT "LUMBER"  
NIGHT & SUNDAY WATCHMEN, E.C. MARGNETO, C.K. STATIONS IN SAW MILL  
WILL HOURLY ROUND, 8 STATIONS IN YARD & SHEDS, HOURLY ROUND.  
POWER STEAM HOIST STONE IN OFFICE, LIGHTS: ELEC. L.P.M., PILES, SLICE &  
WASTE, SHIPPINGS BLOWN TO BOILER NO. 3 THROUGH CONDUIT PIPE, SURPLUS  
WASTE CARRIED TO MUSKOGON BOILER WORKS WASTE SURFACES. SCREW DRIVERS  
ON CHAINERS KEPT OPEN MOST OF TIME, YARD WAYS WITH HOSE AS SHOWN,  
CONVD. WITH CITY HOSE THIRD 4" DIA. HOSELINE ON LBS. - HARD HOSE IN POOR  
CONDITION, ONE NEW 2" HOSE IN OFFICE, WATER PILES & SIDE PILES WELL  
DISTRIBUTED THROUGH MILL, HOSE FEEL WITH 500 PSI HOSE IN GOOD CONDITION  
ON PLATFORM.

### MUSKOGON BOILER WYKS.

WASTE SURFACES  
17" WATER CARRIED BETWEEN  
YARD & OUTSIDE WALLS



Scale of Feet.  
0 50 100 150

**CUMBERLAND TRANSPORTATION Co.**  
SAW MILL & MACH SHED  
NO WATCHMAN, TOWER 22 IN. STAIN CASE, IN  
SAW MILL, 5 IN. RAIL AND IN MACH-SHED, MACHINERY  
STONES, LUMBER SLABS, PILES, CURB & WASTE  
WATER PILES & PINE TRAIL MILL, DISTRICTED, SAW MGS.  
NO OTHER APPROPRIATES.

**Gen. P. Taylor Co.**  
Paints & Products

**Wagoner's Hardware & Grocery Co.**  
Hardware, Groceries & Canned Goods

**STOCK YARDS**  
CATTLE PENS

**DRESSED LUMBER SHED**

**PLANING MILL**  
P.O. # 2  
(R. C. L.)

**CUMBERLAND**

**NEW**

**10**

**3**

**MAIN**

**1ST ST.**

**2ND ST.**

**CUMBERLAND ST.**

**SOUTH FORK RIVER**

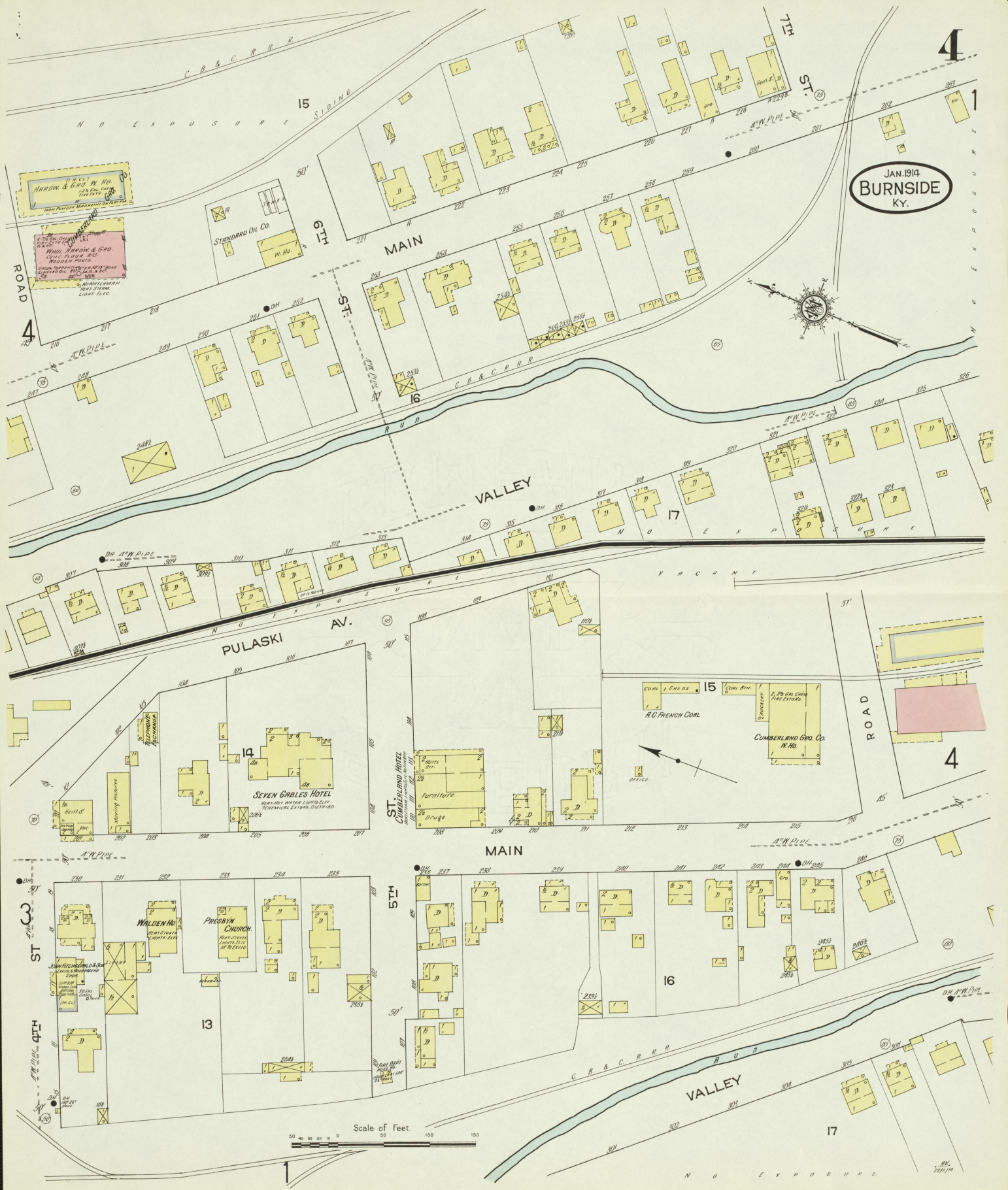
**Cumberland River**







JAN. 1914  
BURNSIDE  
KY.



Scale of Feet.  
0 50 100 150

4

4

17

ST

6TH ST.

HILL ST.

MAIN

VALLEY

PULASKI AV.

MAIN

5TH ST.

VALLEY

WALDEN HO.

PRESBYT. CHURCH

SEVEN GABLES HOTEL

AC. FRENCH COAL

CUMBERLAND GRO. CO. W. HO.

HARDW. & GRD. W. HO.

STANDARD OIL CO. W. HO.

WALDEN HOTEL

WALDEN HOTEL

WALDEN HOTEL

WALDEN HOTEL

WALDEN HOTEL

WALDEN HOTEL

WALDEN HOTEL

WALDEN HOTEL

WALDEN HOTEL

WALDEN HOTEL

WALDEN HOTEL

WALDEN HOTEL

WALDEN HOTEL

WALDEN HOTEL

WALDEN HOTEL

WALDEN HOTEL

WALDEN HOTEL

WALDEN HOTEL

WALDEN HOTEL

WALDEN HOTEL

WALDEN HOTEL

WALDEN HOTEL

WALDEN HOTEL

WALDEN HOTEL

WALDEN HOTEL

WALDEN HOTEL

WALDEN HOTEL

WALDEN HOTEL

WALDEN HOTEL

WALDEN HOTEL

WALDEN HOTEL

WALDEN HOTEL

WALDEN HOTEL

WALDEN HOTEL

WALDEN HOTEL

WALDEN HOTEL

WALDEN HOTEL

WALDEN HOTEL

WALDEN HOTEL

WALDEN HOTEL

WALDEN HOTEL

WALDEN HOTEL

WALDEN HOTEL

WALDEN HOTEL

WALDEN HOTEL

WALDEN HOTEL

WALDEN HOTEL

WALDEN HOTEL

WALDEN HOTEL

WALDEN HOTEL

WALDEN HOTEL

WALDEN HOTEL

WALDEN HOTEL

WALDEN HOTEL

WALDEN HOTEL

WALDEN HOTEL

WALDEN HOTEL

WALDEN HOTEL

WALDEN HOTEL

WALDEN HOTEL

WALDEN HOTEL

WALDEN HOTEL

WALDEN HOTEL

WALDEN HOTEL

WALDEN HOTEL

WALDEN HOTEL

WALDEN HOTEL

WALDEN HOTEL

WALDEN HOTEL

WALDEN HOTEL

WALDEN HOTEL

WALDEN HOTEL

WALDEN HOTEL

WALDEN HOTEL

WALDEN HOTEL

WALDEN HOTEL

WALDEN HOTEL

WALDEN HOTEL

WALDEN HOTEL

WALDEN HOTEL

WALDEN HOTEL

WALDEN HOTEL

WALDEN HOTEL

WALDEN HOTEL

WALDEN HOTEL

WALDEN HOTEL

WALDEN HOTEL

WALDEN HOTEL

WALDEN HOTEL

WALDEN HOTEL

WALDEN HOTEL

WALDEN HOTEL

WALDEN HOTEL

WALDEN HOTEL

WALDEN HOTEL

WALDEN HOTEL

WALDEN HOTEL

WALDEN HOTEL

WALDEN HOTEL

WALDEN HOTEL

WALDEN HOTEL

WALDEN HOTEL

WALDEN HOTEL

WALDEN HOTEL

WALDEN HOTEL

WALDEN HOTEL

WALDEN HOTEL

WALDEN HOTEL

WALDEN HOTEL

WALDEN HOTEL

WALDEN HOTEL

WALDEN HOTEL

WALDEN HOTEL

WALDEN HOTEL

WALDEN HOTEL

WALDEN HOTEL

WALDEN HOTEL

WALDEN HOTEL

WALDEN HOTEL

WALDEN HOTEL

WALDEN HOTEL

WALDEN HOTEL

WALDEN HOTEL

WALDEN HOTEL

WALDEN HOTEL

WALDEN HOTEL

WALDEN HOTEL

WALDEN HOTEL

WALDEN HOTEL

WALDEN HOTEL

WALDEN HOTEL

WALDEN HOTEL

WALDEN HOTEL

WALDEN HOTEL

WALDEN HOTEL

WALDEN HOTEL

WALDEN HOTEL

WALDEN HOTEL

WALDEN HOTEL

WALDEN HOTEL

WALDEN HOTEL

WALDEN HOTEL

WALDEN HOTEL

WALDEN HOTEL

WALDEN HOTEL

WALDEN HOTEL

WALDEN HOTEL

WALDEN HOTEL

WALDEN HOTEL

WALDEN HOTEL

WALDEN HOTEL

WALDEN HOTEL

WALDEN HOTEL

WALDEN HOTEL

WALDEN HOTEL

WALDEN HOTEL

WALDEN HOTEL

WALDEN HOTEL

WALDEN HOTEL

WALDEN HOTEL

WALDEN HOTEL

WALDEN HOTEL

WALDEN HOTEL

WALDEN HOTEL

WALDEN HOTEL

WALDEN HOTEL

WALDEN HOTEL

WALDEN HOTEL

WALDEN HOTEL

WALDEN HOTEL

WALDEN HOTEL

WALDEN HOTEL

WALDEN HOTEL

WALDEN HOTEL

WALDEN HOTEL

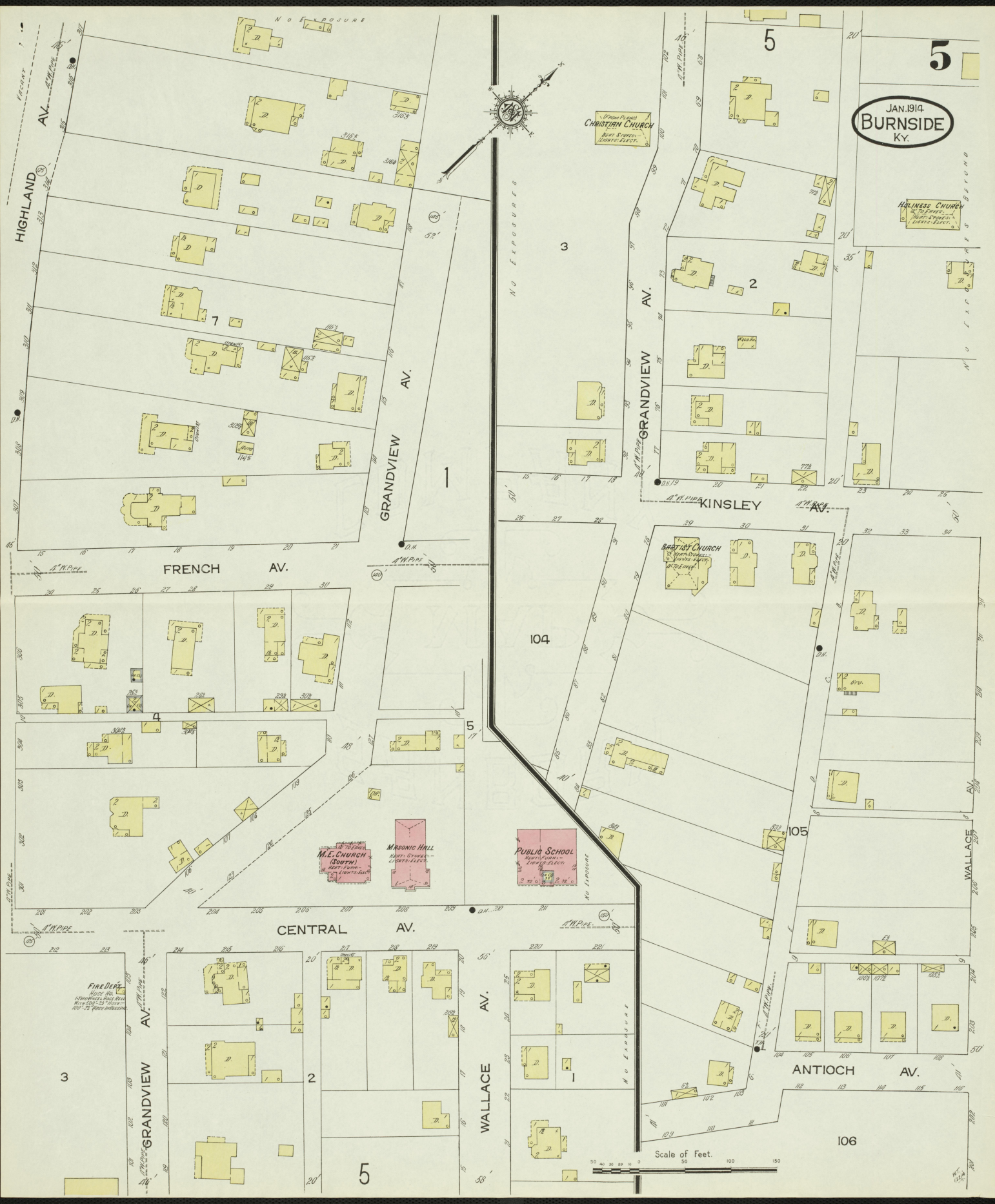
WALDEN HOTEL

WALDEN HOTEL

WALDEN HOTEL

WALDEN HOTEL





JAN. 1914  
**BURNSIDE**  
KY.

Scale of Feet.  
0 50 100 150