

16094

INDEX.

5 Sheets (7802)

1



STREETS.		W		C		O	
Bracken, Front to Third	4	Water, William to Main	1	Catholic Church	3	Opera House	2
" " Third to Fourth	3	" " Main to E. of Elizabeth	2	Christian Church	3	Owens & Case, Wagon Shop	3
Elizabeth, Front to Third	2	" " near Bracken	3	Citizens' Coal Co.	4	" " " " " "	4
" " S. of " "	3	" " near Seminary	4	City Hall	4	Power, J. A., Tobacco Warehouse	3
Fourth, Main to Frankfort	3	William, Front to Third	1	C. & O. R. R. Depot	4	" " S. T. " "	5
Frankfort, West Side, Front to Third	5			Ginn, B. F., Coal Yard	2	Presbyterian Church	2
" " " " " " Third to Fourth	4			Hamilton, S. & P., Tobacco & Grain W. H.	2	Public School	4
Front, William to Main	1			Hamilton's Tobacco Warehouse	1	" " Colored	5
" " Main to E. of Elizabeth	2					Reese, G. A., Wagon Shop	2
" " near Bracken	4					" " S. T. " "	5
" " Seminary	4					Second Presbyterian South Church	3
Main, East Side, Front to Second	2					Stroube, N. J., Flour Mill	2
" " West " " " "	1					Taylor Hotel	2
						Winter, S., Tobacco & Grain Warehouse	2

SPECIALS.

A		B		C	
Armstrong, A. C., Mrs., Tobacco Warehouse	4	Baptist Church	4	Malone & Murphy, Tobacco Warehouse	4
Augusta Cannery	4	Bertram, H., Warehouse	4	Marshall, L., Tobacco Warehouse	4
		Boude, J., Tobacco Warehouse	5	Methodist Episcopal Church	4
		Bradley, J. S., Tobacco Warehouse	3	Moneyhon & Co., Saw & Planing Mill	5
		Byer, M., Tobacco Warehouse	5	Neider, F. A., Co.'s Carriage Trimmings	5

* Indicates only one side of Street shown.

Ohio River.

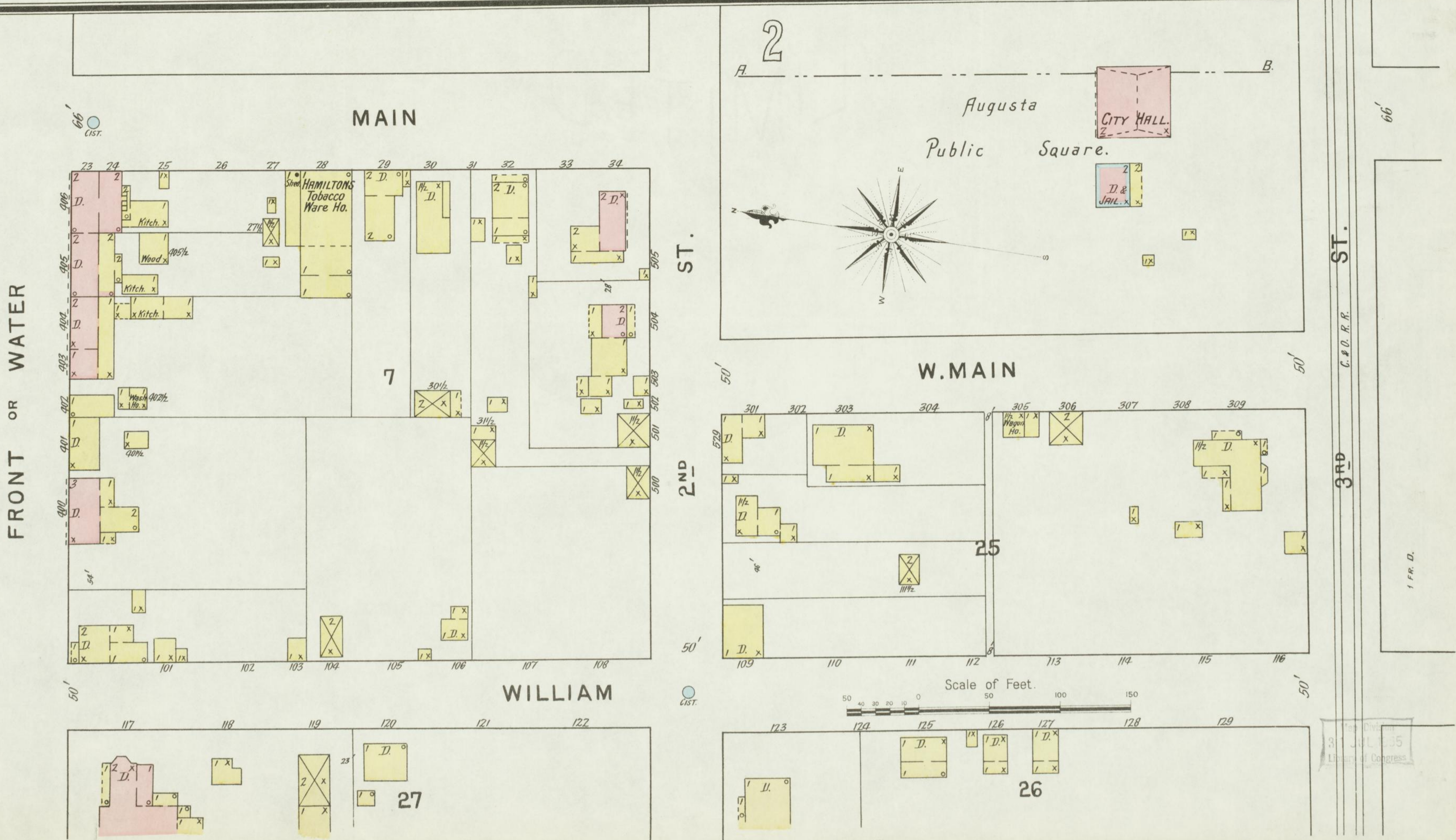


Note -
 NO STEMMERS, 1 HAND ENG. & 1 COMBINED
 HAND & HORSE ENG. 2 HOSE CARTS. 1M-EL.
 TRUCK - 1600 2 1/2 HOSE.
 IS PUBLIC CISTERN OF 400 BBL. CAP. EACH
 & WATER CAN BE OBTAINED FROM RIVER.

KEY

TIME WALL 6 IN. AS ROOF	12
SHINGLE ROOF	12
COMPOSITE ROOF	12
SHED OR SHED ROOF	12
STEAM BOILER	12
FRAME PARTITION	12
OPENING & IRON DOOR	12
WINDOWS - SHUTTERS	12
STABLE	12
WINDOW IN 1 ST STORY	12
1 1/2" x 3"	12
2" x 4"	12
BLDGS COLORED YELLOW ARE FRAME	12
RED - BRICK	12
BLUE - STONE	12
BROWN - IRON	12
GREEN - ADOBE	12
SP - SPECIALS	12
MARKED (S) ARE CLOTH LINED	12
(S) INDICATE RELATIVE HEIGHTS	12
ALTERNATE STREET NOS ARE ACTUAL	12
CONSECUTIVE - ARBITRARY	12
BROKEN LINE NEAR BLDG - WOOD CORNICE	12
SOLID - METAL	12

RECORD OF CHANGES
 MADE BY THE SANBORN-PERRIS MAP COMPANY
 16094
 JUN 21 1895



3 1/2
 JUN 15 1895
 Library of Congress