

WATER FACILITIES:

Owned by private concern - Springfield Motor Co. Source: Surface water - Gravity & direct pressure system Reservoir located 2 1/2 miles north of town. Capacity - 100,000 gallons. Evaporation - 2000 gallons. One 24-inch centrifugal pump, capacity - 500 Gals. per min. & two 60-inch centrifugal pumps, capacity - 350 Gals. per min. each. One Stand Pipe, capacity - 100,000 Gals. elev. 225' abv. Court Ho. Water flows by gravity to filter beds, thence pumped directly to City Main through 8' Main - Auxiliary system - Gravity from Stand Pipe - Domestic pressure - 75 lbs. - Fire pressure - 100 lbs. - Average daily consumption - 140,000 Gals. - 27 hydrants - Approximately 5 Miles of 4" to 8" Pipe.

FIRE DEPT.:

Partly paid & volunteer Co. - One chief, one ass't. chief & 5 men (partly paid) & 50 volunteers. One Fire Station (Iron Coal Building) Apparatus: Ford Hook & Ladder Truck carrying 1000' of C.R.L. hose - 2 3/4 Gal. chem tanks on wheels (drawn by Ford H. & L. Truck) - 75' chem hose each - 2 1/2" C.R.L. hose - Reserve - Alarm by elec. siren & telephone. Note: Elec. siren is located S.W. corner Main & Main Cross St's - Brick building but only switch is located in frame & store arbitrary number 107 Main Cross St.

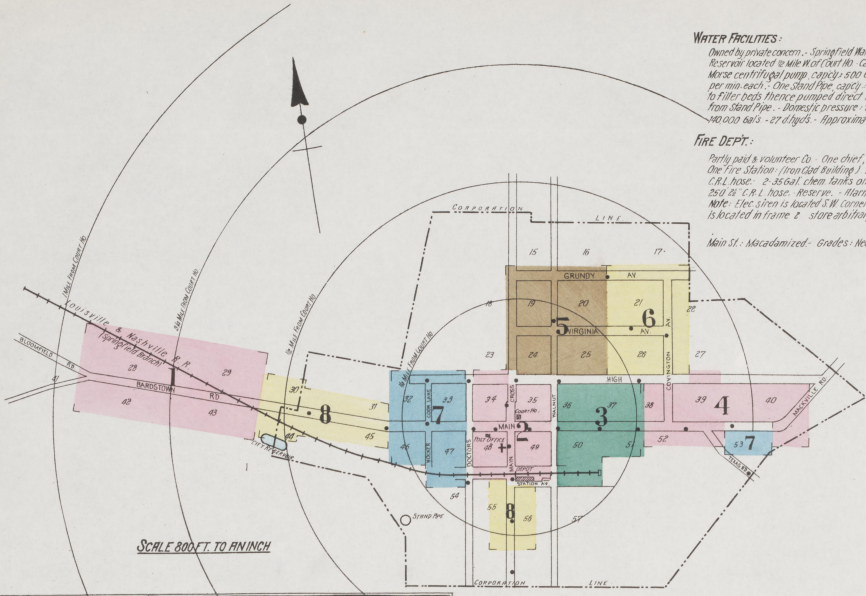
Main St.: Macadamized - Grades - Nearly level - Public lights - Elec.

CLF 14269

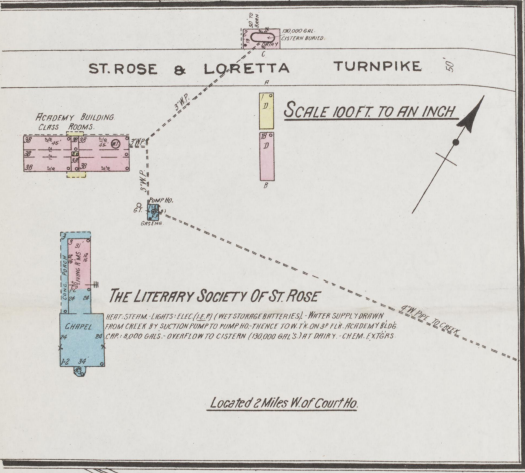
INDEX

Table with columns for Street Name, Street Number, and Building Name. Includes entries for Baptist Church (Colored), Burley Tobacco Growers Co-operative Warehouse Ass'n, Christian Church, County Court House and Jail, etc.

NOTE - House Numbers given are arbitrary.



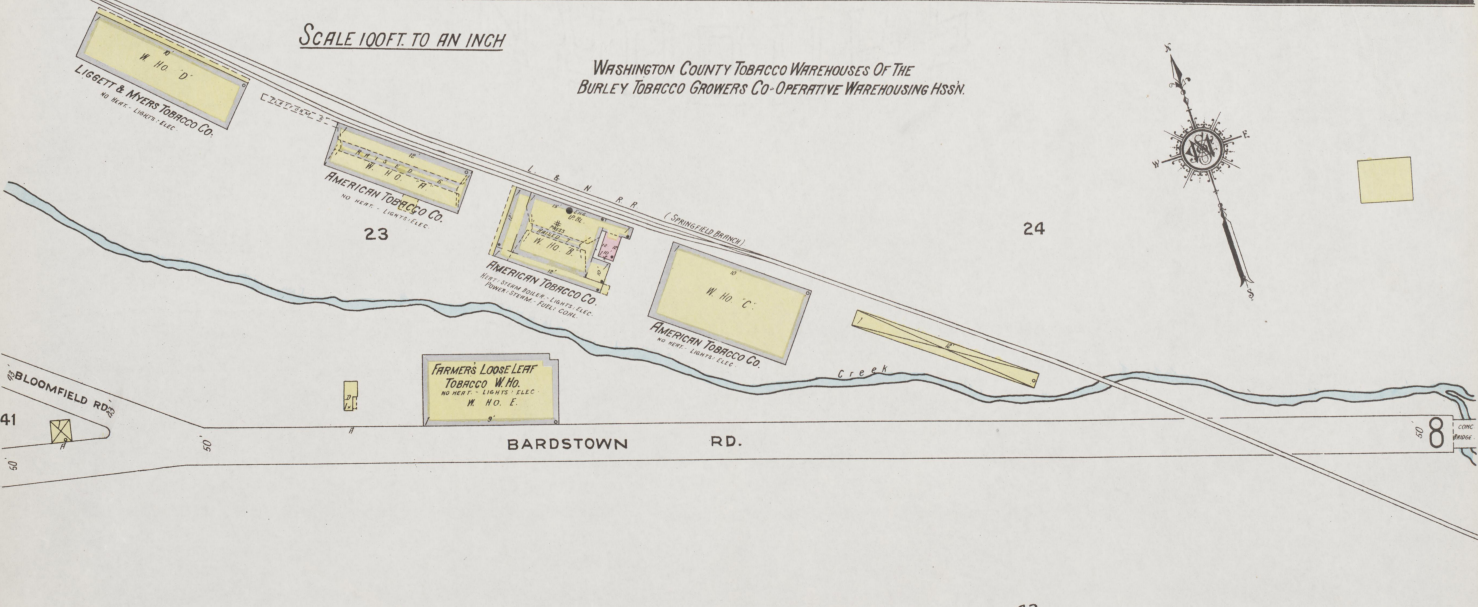
SCALE 800 FT. TO AN INCH



Located 2 Miles W of Court Ho.

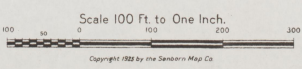


KEY: Legend for building symbols and colors. Includes symbols for fire hydrants, fire stations, and various building types like schools and churches.



SCALE 100 FT. TO AN INCH

WASHINGTON COUNTY TOBACCO WAREHOUSES OF THE BURLEY TOBACCO GROWERS CO-OPERATIVE WAREHOUSING HSSN.



Scale 100 Ft. to One Inch.

Copyright 1925 by the Sanborn Map Co.

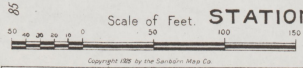
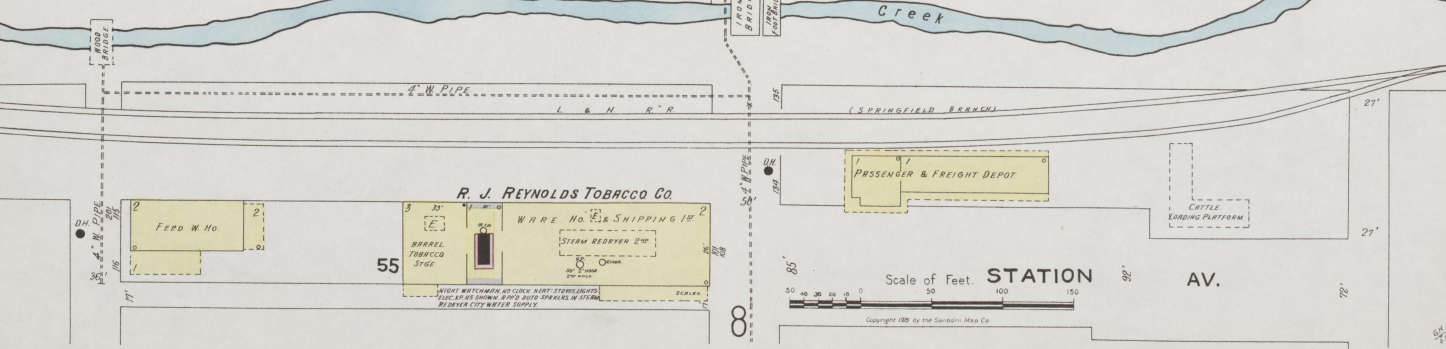
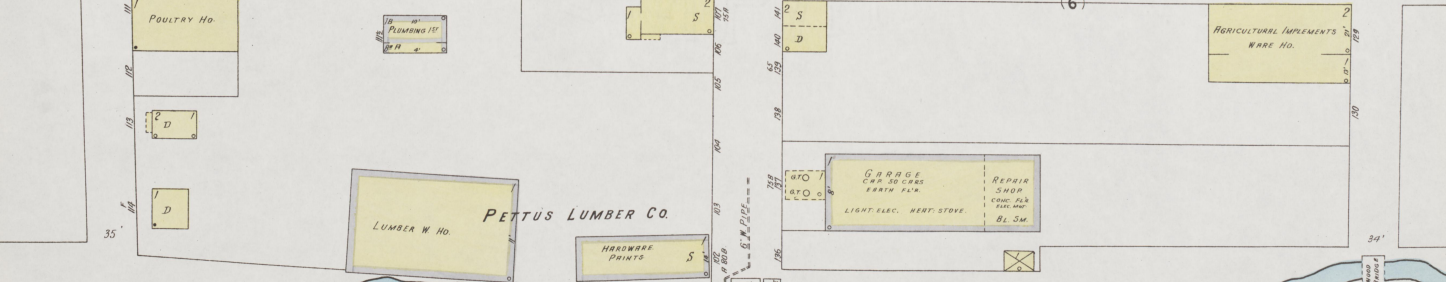
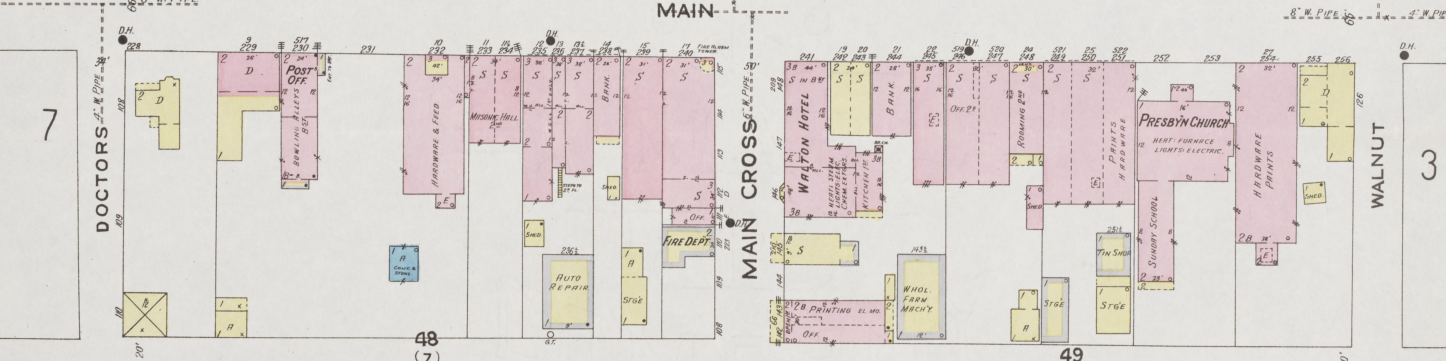
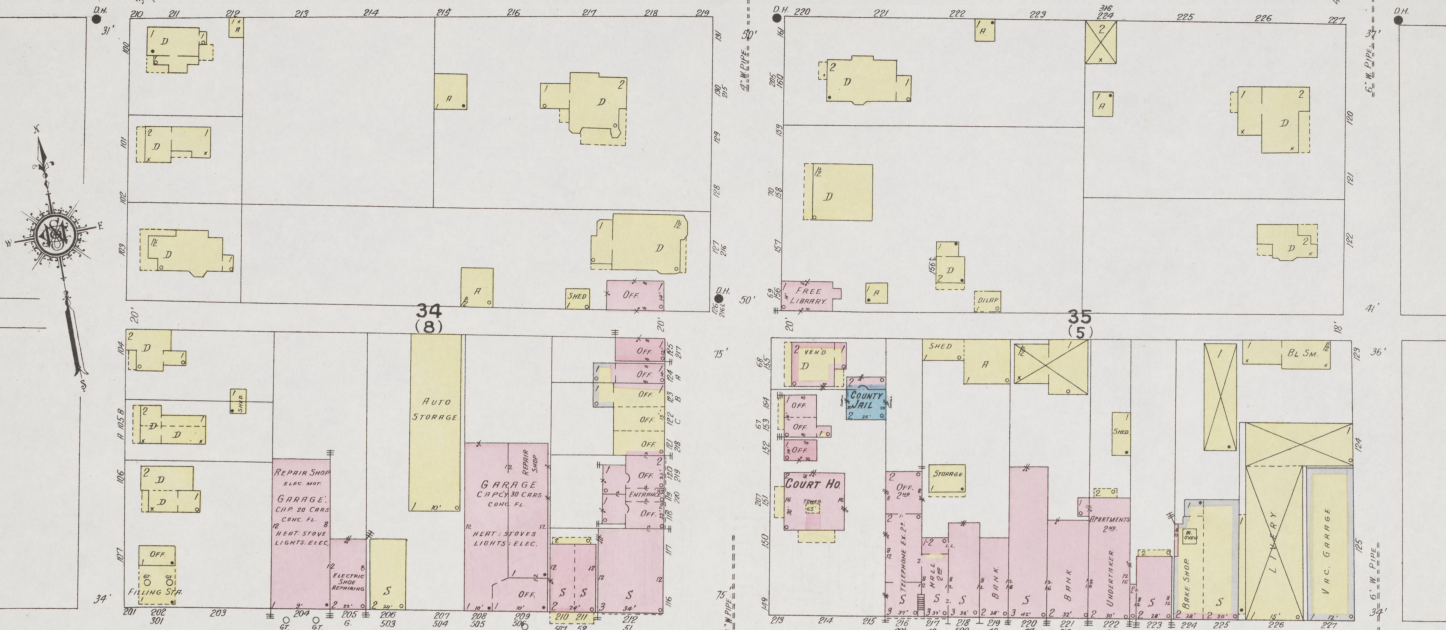
2

23

5

MAR. 1925  
SPRINGFIELD  
KY.

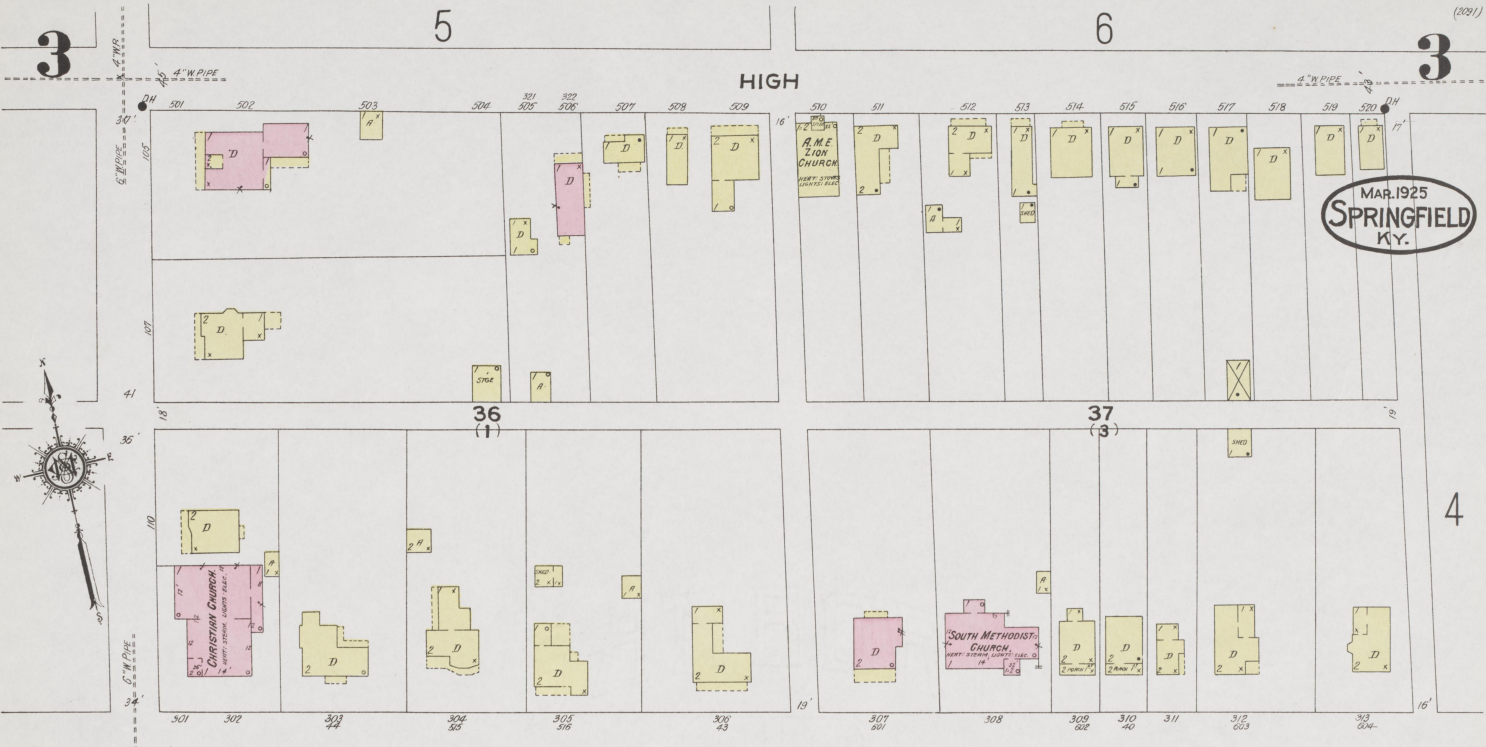
2



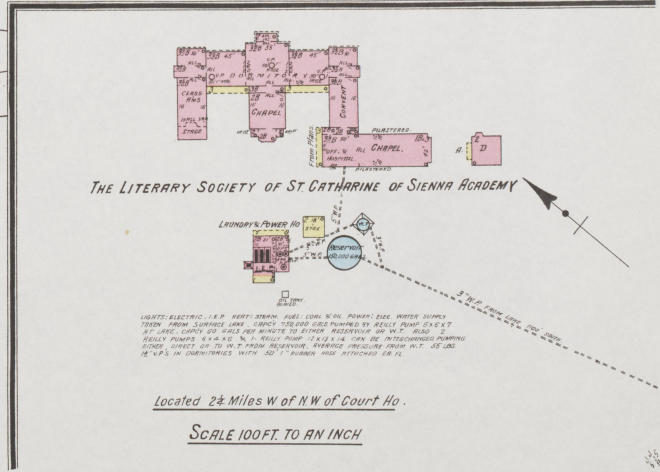
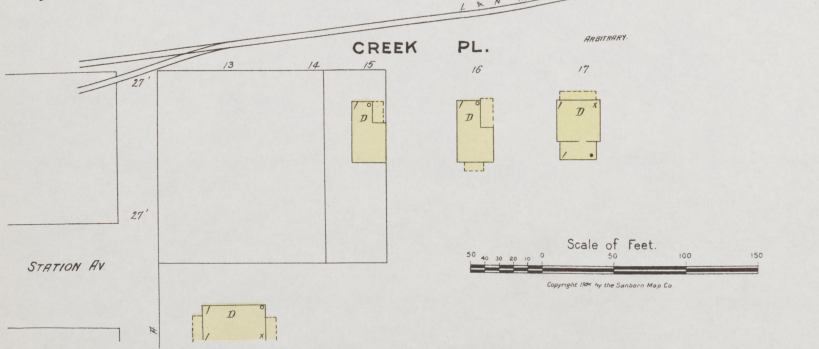
(209)

3

85

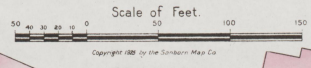
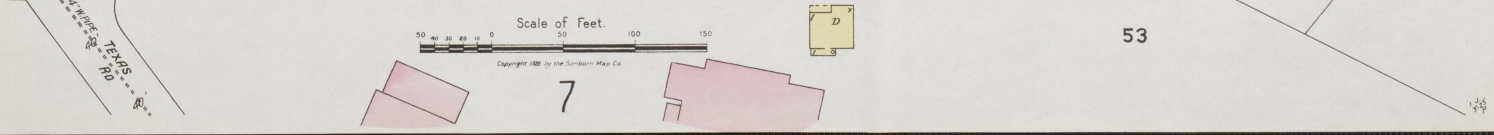
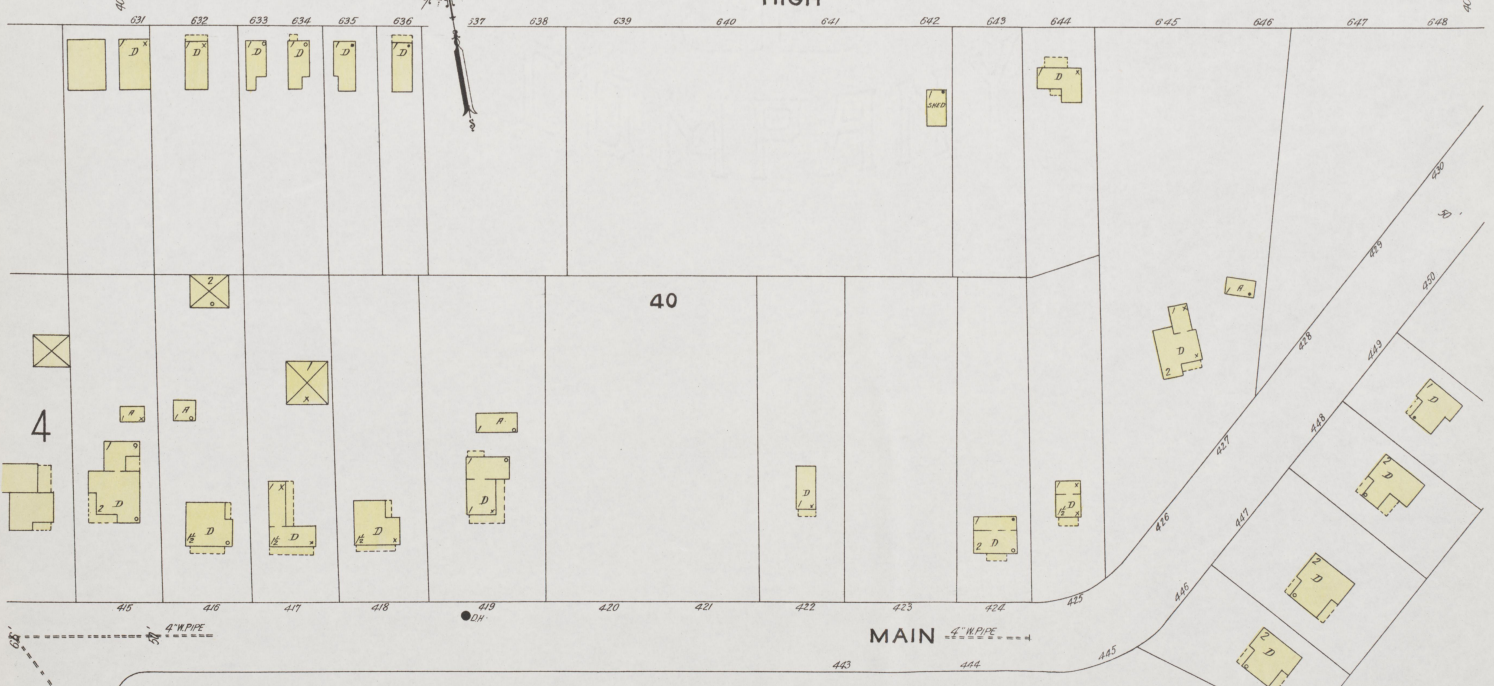
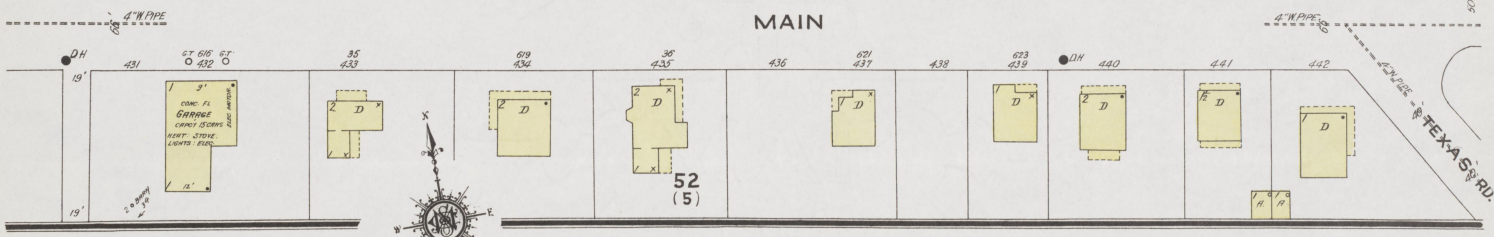


MAR. 1925  
 SPRINGFIELD  
 KY.





MAR. 1925  
 SPRINGFIELD  
 KY.



7

5

15

16

5

GRUNDY AV.

MAR. 1925  
SPRINGFIELD  
KY.



18

19

20

6

MAIN CROSS

WALNUT

VIRGINIA AV.

23

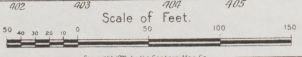
24

25

2

18-28  
SPRINGFIELD  
BAPTIST CHURCH  
REST. STEAM  
LIGHTS & ELEC.

SUNDAY  
SCHOOL  
REST. STEAM  
LIGHTS & ELEC.



Copyright 1925 by the Sanborn Map Co.

2

HIGH

3

6

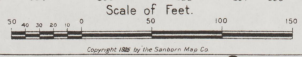
6

GRUNDY AV.

VIRGINIA AV.

COVINGTON AV.

HIGH



3

4

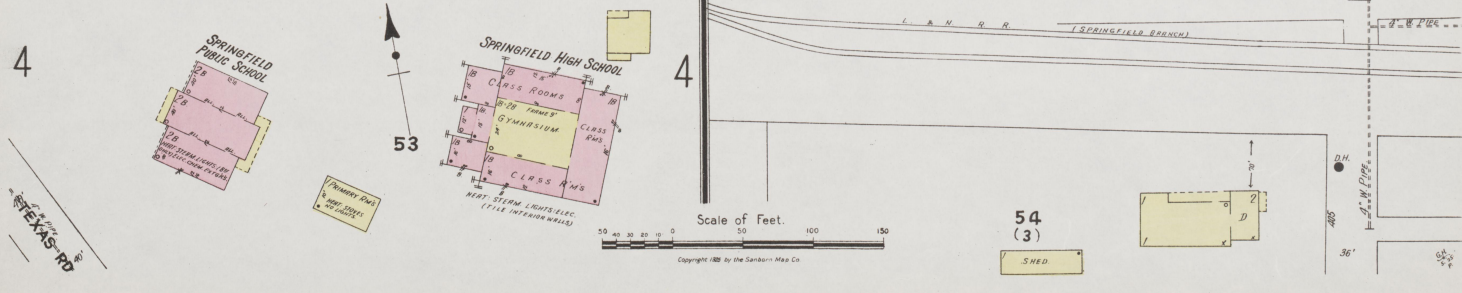
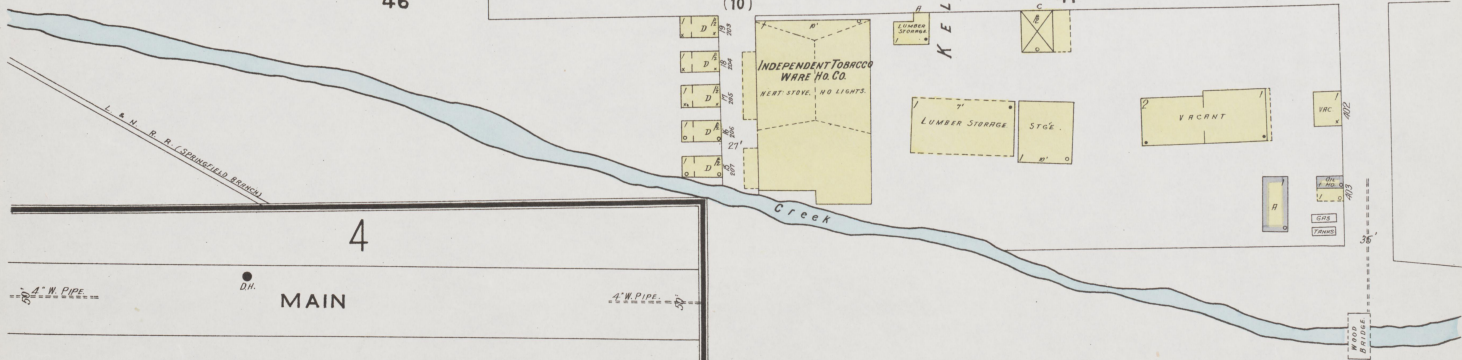
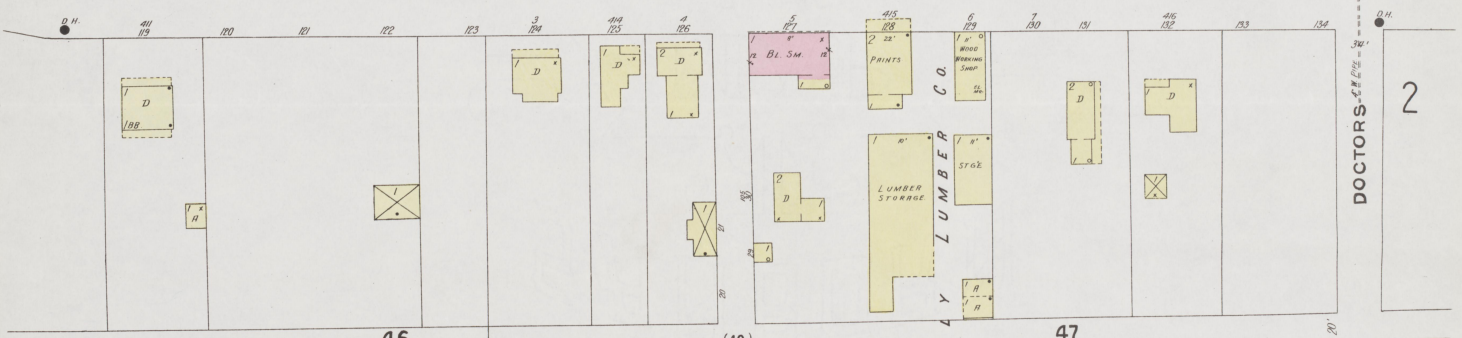
7

7



8

MAIN



TEXAS-20

8

8

STATION AV.

MAR. 1925  
SPRINGFIELD  
KY.

NOT NAMED

NO EXPOSURE

MAIN CROSS

NO EXPOSURE

55  
(7)

56  
(6)

30

MAIN 8" PIPE

8

KENTUCKY UTILITIES CO & SPRINGFIELD WATER CO.

44

75 MILLION GAL. RESERVOIR SURFACE WATER

