

# THE KENTUCKY ALUMNUS



VOLUME XXXII

ISSUE

**1**



# THE KENTUCKY ALUMNUS

Published quarterly by the University of Kentucky on the campus of the University of Lexington. Subscriptions to non-members, \$5.00. Membership (Type A) in the Alumni Association includes subscription to the Alumnus. Member of National Editorial Association, Kentucky Press Association, American Alumni Council.

VOLUME XX

ISSUE

Betty Bowen Wiggs ..... Editor  
 Helen G. King ..... Managing Editor  
 Marguerite McLaughlin ..... Associate Editor  
 Ken Kuhn ..... Sports Editor

Entered as Second Class Matter at the Post Office at Lexington, Ky., May 1, 1952, under the act of Aug. 24, 1912. Edited by the Alumni Association.

## Contents

	1961
FEBRUARY	
U.K. SPINDLETOP CENTER .....	4
ABOUT THE ALUMNI .....	9
UNIVERSITY STAFF NEWS .....	14
UNIVERSITY AFFAIRS .....	16
ALUMNI ASSOCIATION NEWS .....	18
SPORT NEWS .....	23
BIRTHS, WEDDINGS, DEATHS .....	24

### EXECUTIVE COMMITTEE 1960-'61

L. Berkley Davis, President, 1850 Bonnie Castle Drive, Owensboro, Ky.  
 James A. Sutherland, Vice President, Bloomfield, Ky.  
 Helen G. King, Director of Alumni Affairs, 522 Sayre Ave., Lexington, Ky.  
 B. A. Shively, Treasurer, Athletics Department, University of Kentucky  
 C. C. Clarke, Jr., 1203 South Green Street, Glasgow, Ky. (Term expires 1963)  
 Dr. O. B. Murphy, 743 West Cooper Drive, Lexington, Ky. (Term expires 1963)  
 J. Paul Nickell, 302 Hart Road, Lexington, Ky. (Term expires 1963)  
 McKay Reed, Jr., 1925 Spring Drive, Louisville 5, Ky. (Term expires 1963)  
 William M. Gant, Masonic Bldg., Owensboro, Ky. (Term expires 1963)  
 Mrs. Hampton C. Adams, Old Keen Place Versailles Pike, Lexington (Term expires 1962)  
 William R. Black, 300 N. 38th. St., Paducah, Ky. (Term expires 1962)  
 Smith D. Broadbent, Jr., Cadiz, Ky., (Term expires 1962)  
 Richard E. Cooper, Somerset, Ky. (Term expires 1962)  
 Guy A. Huguélet, Jr., 1469 Lakewood Drive, Lexington (Term expires 1962)  
 R. R. Dawson, Bloomfield, Kr. (Term expires 1961)  
 Wathen Medley, P.O. Box 548 Owensboro, Ky. (Term expires 1961)  
 James H. Pence, 315 S. Fifth St. Louisville, Ky. (Term expires 1961)  
 Robert H. Hillenmeyer, Hillenmeyer Nurseries, Lexington, Ky. (Board of Trustees)

J. Stephen Watkins, P.O. Box 1357, 446 East High St., Lexington, Ky. (Board of Trustees)  
 Dr. Ralph J. Angelucci, 2101 Nicholasville Rd., Lexington, Ky. (Immediate Past President)  
 Marguerite McLaughlin, 226 E. Maxwell St., Lexington, (Life Member, honorary)  
 H. D. Palmore, Frankfort, Ky. (Life Member, honorary)  
 William H. Townsend, First National Bank Bldg., Lexington, Ky. (Life Member, honorary)

### APPOINTEE MEMBERS

Homer L. Baker, 501 South Second, Louisville, Ky.  
 Hilary J. Boone, 320 Holiday Road, Lexington, Ky.  
 Dr. Harry C. Denham, 405 West Second St., Maysville, Ky.  
 Dr. Glenn U. Dorroh, 301 Clinton Road, Lexington, Ky.  
 Herndon J. Evans, Editor, The Lexington Herald, Lexington, Ky.  
 Gilbert Kingsbury, 210 Edgewood Road, Fort Mitchell, Ky.  
 William G. McConnell, 2106 South Main, Hopkinsville, Ky.  
 Newton W. Neel, City Engineers Office, Henderson, Ky.  
 B. A. Short, Beattyville, Ky.  
 Virgil Watson, 1726 Beverly Blvd., Ashland, Ky.  
 R. G. Wells, Pr., Pikeville, Ky.

Executive Committee meets second Monday night of each month. September through May, 6:30 p.m., Carnahan House, unless otherwise specified.

ABOUT THE COVER: Front of Spindletop mansion. Facing the 40-room mansion will be for scientific and executive findings.





“A University is a place; it is a spirit. It is men of learning; it is a collection of books; it is laboratories where work in science goes forward; it is the source of the teaching of the beauties of literature and the arts; it is the center where ambitious youth gathers to learn; it protects the traditions, honors the new and tests its values; it believes in truth, protests against error and leads men by reason rather than by force.” —McVey

COVER: From  
ansion. Fac  
ansion will  
d executive



# U.K. SPINDLETOP CENTER

## *Acceleration Of A Research Program*

By EDWARD EARL LITKENHOUS

*Research Consultant, Spindletop Research Institute*

### INTRODUCTION BY DR. MERL BAKER

The state of Kentucky and its citizens should experience a considerable boost up the ladder of science and industry leadership with the establishment of the Kentucky Spindletop Research Center consisting of the Spindletop Research Institute, the Spindletop Industrial Research Park and facilities for scientific and executive meetings.

The purposes of the development are:

1. To establish a nationally prominent research center.
2. To serve Kentucky industry in the solution of research problems.
3. To attract Industrial Laboratories into the Park.
4. To attract additional industries into Kentucky through a reputation of quality research achievement.
5. To develop the natural resources of Kentucky through research.

The Research Institute is a facility of the University of Kentucky and its program is under the direction of the Kentucky Research Foundation, a non-profit affiliated corporation of the University of Kentucky. The Research Park is designed to provide sites for industries to build research laboratories for the company's own operation within a campus-like complex. The Spindletop Mansion is to be used for scientific and executive meetings. Other

community facilities will be added as the Park and Institute develop.

The Kentucky Spindletop Research Center will be developed as a research campus on approximately 425 acres of the Spindletop farmland. The Spindletop Research Institute of the University of Kentucky will occupy approximately 75 acres and consist of research buildings. The Institute will be at the hub of the park and on this campus the campus will be housed community facilities for the benefit of the entire Center. The land to be sold to industries, professional societies and associations for research laboratory locations is zoned strictly for research. A campus-like atmosphere will be maintained throughout the Park.

The Board of Directors of the Research Center is responsible for its promotion and development. The University of Kentucky and the Kentucky Research Foundation have specific responsibilities for the development of the Spindletop Research Institute. Sewers and utilities for the built and developed land plots will be available for industrial purchases. Initial physical facilities of the Institute will be provided by the State government. The Kentucky Research Foundation will assist in the further development of the Institute's facilities through seeking funds from industries, agencies of the Federal government, and



associations and the Institute, except self-supporting.

The Kentucky Research Foundation is established through the Kentucky Research Foundation of Kentucky.

SPINDLETOP

The Spindletop Research Center of Kentucky is a research Foundation designed to provide fields of part-time and full-time federal agencies and foundations.

The staff of the Spindletop Research Center will supplement the research program of the Spindletop Research Institute to avoid duplicate development of the campus. The Kentucky Research Foundation will assist in the further development of the Institute's facilities through seeking funds from industries, agencies of the Federal government, and

THE KENTUCKY ALUM





*Rear view of Spindletop mansion.*

associations and foundations. Financial operation of the Institute, except for capital outlay, is expected to become self-supporting through sponsored research.

The Kentucky Spindletop Research Center was established through the cooperation of the State government, the Kentucky Chamber of Commerce and the University of Kentucky.

#### SPINDLETOP RESEARCH INSTITUTE

The Spindletop Research Institute is to be a University of Kentucky facility operated through the Kentucky Research Foundation. The Spindletop Research Institute is designed to implement sponsored research in a variety of fields of particular interest to industry, state government, federal agencies, professional societies, trade associations and foundations.

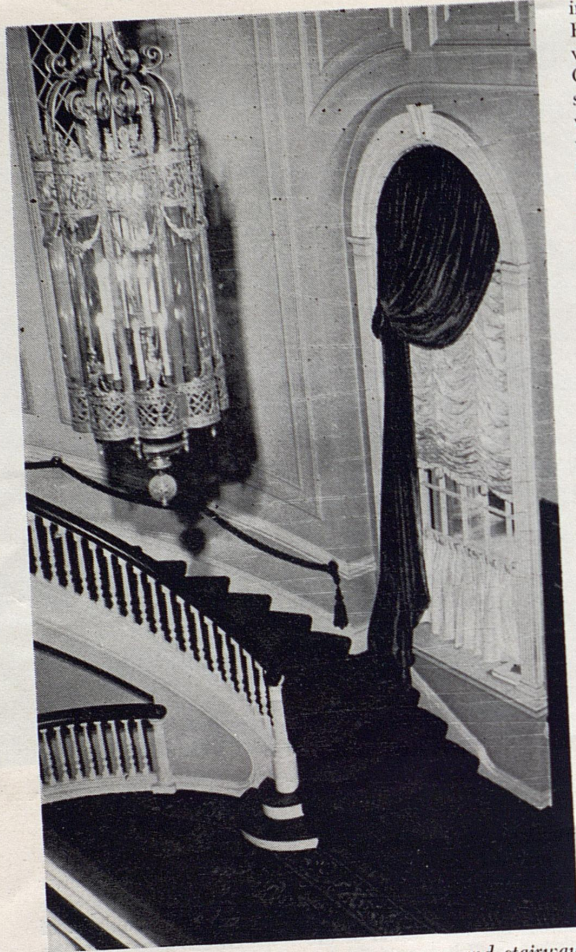
The staff and physical facilities of the Institute will supplement those of the University of Kentucky. The research problems to be implemented by the Spindletop Research Institute will be broad gaged in scope and will not duplicate departmental research on the University's main campus. The University's science and engineering departments, and existing research units, will be strengthened to undergird the Institute as the Institute grows.

Professors from the University of Kentucky, and other universities and colleges within the state, may cooperate with the Institute in implementing research problems of mutual interest. Much of the research envisioned for the Institute will be applied in nature, and certain basic components of larger problems may be fed to the various science and engineering departments and laboratories of the University of Kentucky and other educational institutions within the state. Initially the Institute must depend extensively upon existing facilities and staff of the University of Kentucky, and the Kentucky Research Foundation will be responsible for achieving maximum cooperation.

Full-time employees of the Institute may be used for limited teaching by the University of Kentucky, while many part-time employees would be pursuing graduate studies at the University. Many employees of the industrial research laboratories within the Park would also be pursuing graduate programs at the University. The availability of graduate programs at the University will prove of immeasurable value in attracting industrial laboratories into the Park and drawing competent staff members to the Institute. The graduate program at the University will be greatly strengthened by the involvement of many competent students.

*The Institute will serve industry just as the Univer-*





*Spindletop mansion entrance room and stairway.*

*sity's Agricultural Experiment Station serves agriculture. Small industries cannot afford a research laboratory of their own and would profit greatly by having a facility close at hand providing research service by contract. Larger industries frequently find that specific research needs may be obtained at a lower cost through contract than when performed in a company laboratory. The Institute would become the focal point of sponsored industrial research. The staff and facilities of the science and engineering departments, the Wenner Gren Aeronautical Research Laboratory and other University of Kentucky research units would assist the Institute in meeting the needs of Kentucky industries.*

The Institute will serve as the hub of the park development, with industries having laboratories in the Park contracting with the Kentucky Research Foundation for supplementary research to be performed by the Institute. The Institute's staff and facilities will also be utilized for

implementing research sponsored through the Kentucky Research Foundation by the Department of Economic Development, other state agencies, the Kentucky Chamber of Commerce, agencies of the federal government, professional societies, trade associations, and foundations. Involvement in research of interest to various sponsors provides for the acquisition of facilities and staff experience to better serve Kentucky industry.

The Institute will be especially concerned with research projects to help accelerate the economic and industrial development of Kentucky. A continuing emphasis will be given to the development of new and increased utilization of natural resources of Kentucky. New and enlarged programs will be initiated as the need arises.

Within limits of available resources, both physical facilities and staff of the Institute will be expanded to meet future needs. The operation of the Institute should become financially self-supporting from sponsored research within a few years after the first building is completed.

*An important objective of the Kentucky Research Foundation is to promote research projects upon which Kentucky's industrial, business, and agricultural interests may cooperate with the University to the end that the state's economic resources may be increased as rapidly as possible.*

The Spindletop Research Institute is specifically concerned with this objective. Physical facilities may be acquired through funds from the state government, the Research Center Board, the federal government, gifts from individuals, grants from industries and grants from foundations.

#### KENTUCKY SPINDLETOP RESEARCH PARK

The Kentucky Spindletop Research Park on approximately 350 acres of the present Spindletop farm land will be developed into a research campus.

The Kentucky Spindletop Research Center Board will promote the Park. Roads and utilities will be built and developed land plots will be sold to interested industries at a price sufficient to cover the initial land cost plus developments.

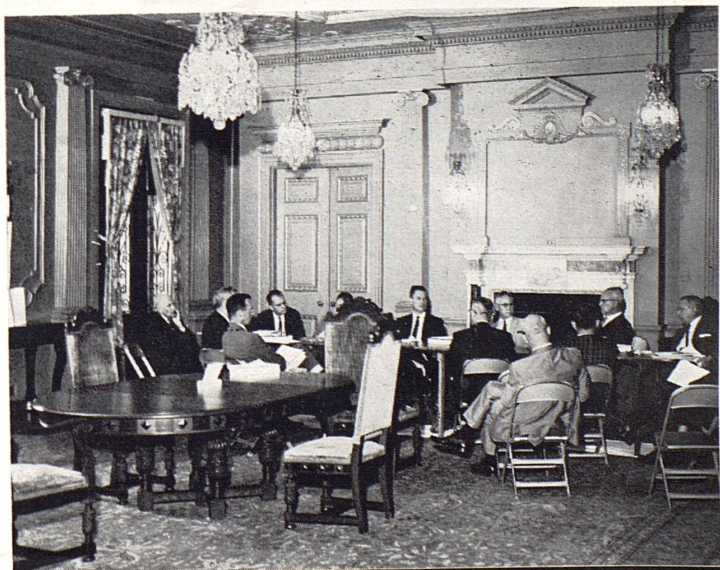
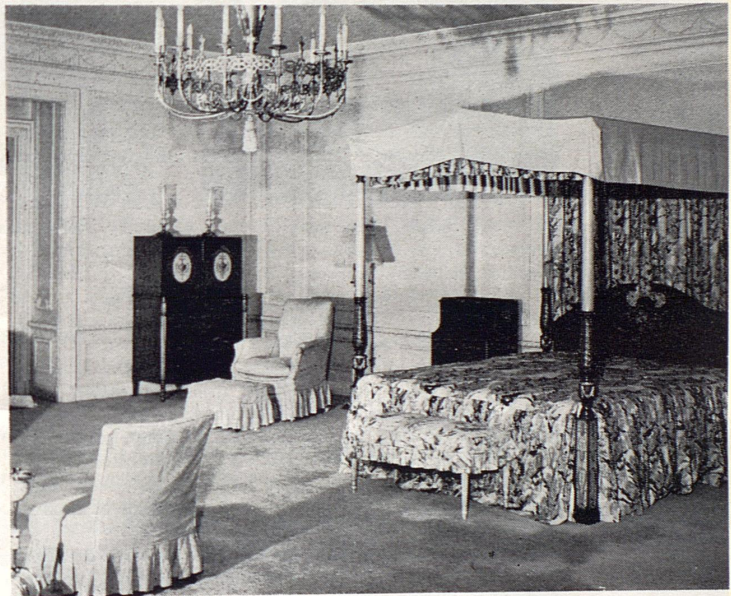
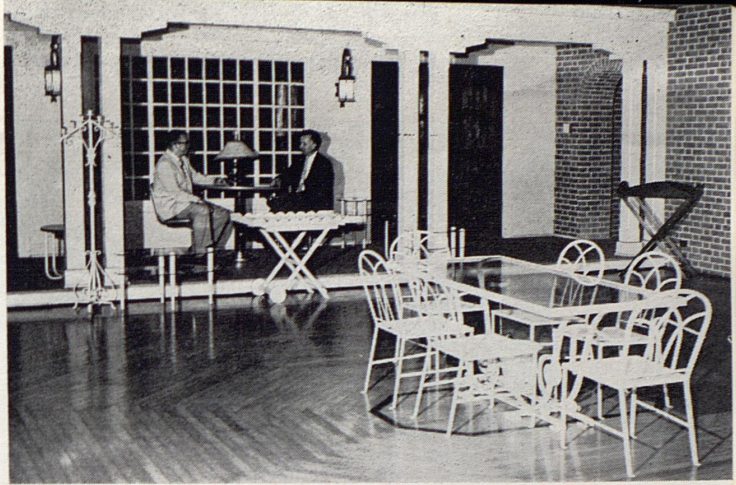
The availability of graduate programs at the University of Kentucky and research competence within the basic sciences and engineering departments is believed to be important in attracting and aiding industrial research laboratories built in the Park. The Institute will supplement University of Kentucky facilities and will further strengthen the attraction of industry to the Park. The central location of Lexington, its numerous offerings as a place to live, and the beauty of the Spindletop area are additional factors contributing to the anticipated success of drawing several industrial laboratories into the Park.

The combined research programs of the Institute and industrial laboratories within the Park will have a major impact on Lexington and central Kentucky. Of great importance is the probable location of many new manufacturing plants throughout Kentucky due to the existence of the strong research center. The potential impact of manufacturing industries is enormous.

One major long range objective of the Spindletop development is to produce an even more favorable climate in Kentucky for industry.

Interior view  
library, (r)  
dining room  
scientific c

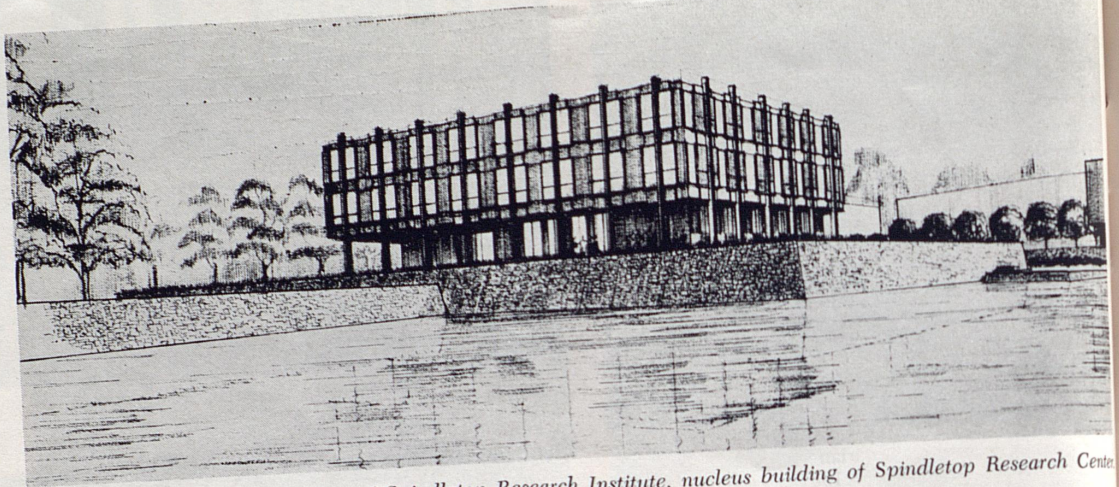




Interior views of Spindletop mansion: (above) fireplace in library, (right, top) ballroom, (center) bedroom, (bottom) dining room. The 40-room mansion will be used for scientific and executive meetings.

ntucky  
nic De  
mber of  
profes  
ns. In  
ors pro  
erience  
  
with re  
d indus  
mphas  
increas  
ew and  
ises.  
ysical fa  
to meet  
ould be  
research  
leted.  
Research  
on which  
interest  
that the  
rapidly a  
  
cally cre  
may be a  
t, the Pe  
gifts from  
from fon  
  
ARK  
  
on appr  
n land w  
  
Board w  
e built a  
d industr  
ost plus d  
  
e Univers  
n the ha  
ieved to  
ial resear  
will supp  
will furth  
k. The ce  
gs as a ge  
top area  
ated succ  
the Park  
Institute  
have a ma  
. Of grea  
y new ma  
the exist  
impact of  
  
pindletop  
orable clim  
  
A L U M N





Architect's drawing of Spindletop Research Institute, nucleus building of Spindletop Research Center.

#### BOARD OF DIRECTORS

Fifty-seven industrial, business, civic, and professional leaders are charter members of the Spindletop Research Center Board of Directors. They are:

Governor Bert T. Combs; Lt. Gov. Wilson W. Wyatt; Dr. Merl Baker, executive director, Kentucky Research Foundation; Dr. Frank G. Dickey, UK president; Floyd I. Fairman, Kentucky Utilities Co. president; H. J. Huether Jr., chairman of the board of General Telephone Co. of Kentucky; C. R. McAlister, plant manager, Proctor & Gamble; Grant McDonald, division manager, Square D Co.; Clair F. Vough, general manager, International Business Machines Corp.; Fred B. Wachs, general manager, Lexington Herald-Leader Co.; J. Stephen Watkins, J. Stephen Watkins Consulting Engineers; A. K. Weisner, plant manager, R. J. Reynolds Tobacco Co.; C. V. Whitney, president of Hudson Bay Mining & Smelting Co., New York, and of Whitney Industries Inc., Lexington, all of Lexington.

George W. Blackwood, president, Dewey & Almy Chemical Division, W. R. Grace & Co., Cambridge, Mass.; Rexford S. Blazer, chairman of board, Ashland Oil & Refining Co., and J. M. Lobaugh, manager of Armco Steel Corp., both of Ashland; Archibald P. Cochran, president Anaconda Aluminum Co.; W. S. Cutchins, president, Brown & Williamson Tobacco Corp.; Dr. Philip Davidson, University of Louisville president; C. D. Dosker, president, Gamble Brothers; Dr. R. C. Ernst, dean of Speed Scientific School; C. Hunter Green, vice president and general manager, Southern Bell Telephone and Telegraph Co.; Thomas O. Helm, president, Blue Grass Cooperage Co.; William H. Kendall, president, Louisville & Nashville Railroad Co., all of Louisville.

Angus D. MacLean, president, Wood-Mosaic Corp.; B. Hudson Milner, executive vice president, Louisville Gas & Electric Co.; Douglas W. Potter, president, First National Bank of Louisville; G. E. Relmers, works manager, International Harvester Co.; P. Booker Robinson, president, Citizens Fidelity Bank & Trust Co.; Arch P. Smith,

Kentucky works manager, E. I. duPont de Nemours & Co. Mohe H. Solworth, president, Industrial Sanitation Consultants Inc.; Daniel L. Street, executive vice president, Brown-Forman Distillers Corp.; Grant Thomas, president, American Synthetic Rubber Corp.; J. W. Van Vactor, manager, Ford Division of Ford Motor Co.; J. C. Zimmerman, assistant executive vice president, Kentucky Chamber of Commerce; William C. Smith, president, Standard Oil Co. of Kentucky, all of Louisville.

James L. Daniel, president, Green River Steel Corp.; L. B. Davis, vice president, General Electric Co.; W. M. Elmer, president, Texas Gas Transmission; G. J. Tankersley, president, Western Kentucky Gas Co., all of Owensboro.

Mark E. Eastin Jr., president West Kentucky Coal Co. Inc., Madisonville; Ernest S. Fields, president, United Light, Heat & Power Co., and Lawrence Michaels, president, Michaels Art Bronze Co., both of Covington; Roland Fitch, president, Bowling Green Bank & Trust Co., Bowling Green; E. B. Kennedy, commissioner, Department of Economic Development, Frankfort; Gerald C. Knapp, president, Magnatronics Inc., Elizabethtown; Elvin Lane, director Kentucky Rural Electric Co-Operative Corp., Harrodsburg; Harry LaViers, president, South-East Coal Co., Paintsville; B. F. Reed, treasurer, Turner Elkhorn Mining Co., Drift; William R. Reynolds, executive vice president, Reynolds Metal Co., Richmond, Va.; John Schroder Jr., general superintendent, United States Steel Corp., Lynch; R. D. Wallace, president, Kentucky Chamber of Commerce and works manager, Spencer Chemical Co., Henderson.

J. A. Goldfarb, chairman of board and president, United Underwear Co. Inc.; H. E. Martin, president, Metal Thermit Corp.; George R. Milne, president, National Carbide Co.; Elmo Roper, Elmo Roper & Associates; Stanley Simon, Stanley Simon & Associates; Philip Sporn, president, American Electric Power Co. Inc.; Charles C. Westley, chairman of the board and president, Ford, Bacon & Davis Inc., all of New York.



MISS WHITENACK ELECTED  
LIBRARY ASSN. OFFICER

Miss Carolyn I. Whitenack, associate professor of education at Purdue University, was elected second vice president of the American Library association at the association's 79th annual conference in Montreal, Canada. Miss Whitenack was elected in a mail ballot among ALA's more than 23,000 members.

Miss Whitenack, who taught in Kentucky public schools, 1934-47, received her AB degree in library science from the University of Kentucky in 1948. In 1956 she received an MS degree from the Graduate School of Library Science, University of Illinois. She served as librarian at the University of Kentucky in 1947-50. She was director of the division of school libraries and teaching materials in the Indiana department of public instruction in 1953-56 when she joined the Purdue faculty.

• • •

WILLIAM A. CHEEK, Louisa, Ky., who received his master's from UK in 1950, is governor of district 674 of Rotary International.

• • •

Helen Henry Named  
News Service Director

The appointment of Miss Helen G. Henry as director of news services for the newly created Kentucky Department of Public Information was announced in December by Commissioner Cattie Lou Miller.

Miss Henry, 35, a native of Central City, has been serving as editor of Louisville Magazine and director of publications for the Louisville Chamber of Commerce.

Miss Henry is directing the department's supply of information to the public through the press, radio, television and other news media and assisting the commissioner in coordinating the work with news functions of other agencies.

During the seven years Miss Henry edited the chamber's official monthly publication it won 18 national awards.

Miss Henry is a 1948 journalism graduate of the University of Kentucky.

# About The Alumni



Martha Sherfey, '60



Colonel B. L. Baker, '36

APPOINTED HOME ADVISER

Miss Martha Sherfey was recently appointed home service adviser in Tiffin, Ohio, for the Ohio Fuel Gas Co.

Miss Sherfey, who will be known professionally as Betty Newton, will visit homemakers at their request to demonstrate proper uses of gas appliances. She also will be available for talks and cooking demonstrations for clubs and other interested church, social and civic groups.

Miss Sherfey was born in Glasgow, Ky. She was graduated from high school there and received her Bachelor of Science degree from the University of Kentucky in 1960. She is a member of the Seneca County and American Home Economics Assns., the American Assn. of University Women and the Tiffin Panhellenic organization.

Her parents, Mr. and Mrs. Mitchell Sherfey, live in Glasgow.

• • •

GLYNN L. CORYELL, '31, is manager of the National Coal Association's market-promotion division. He is a native of Paducah.

Col. Baker Awarded  
Air Force Medal

Colonel Basil Lee Baker, class of '36, has been awarded the Air Force Commendation Medal by Brig. Gen. Paul W. Scheidecker in Denver, Colorado.

Colonel Baker was cited for the improvement in the quality of administration throughout the Air Force Accounting and Finance Center while he was chief of the newly organized Directorate of Administration.

Currently, Colonel Baker is deputy director of Information at Headquarters Air Material Command, Wright-Patterson AFB, Ohio.

A native of Kentucky, Colonel Baker entered military service in September 1940 and has served four tours of duty overseas. In 1954 he was assigned to Headquarters U. S. Air Force, Washington, D. C., as assistant for congressional liaison in the budget directorate. He went to the Accounting and Finance Center in July 1959 as chief of staff.



## Tom Moore Promoted To Vice President Of Humble

Thomas W. Moore has been named vice president for supply and transportation, a new post, by Humble Oil & Refining Company, the nation's largest domestic oil firm.

Moore joined Humble's headquarters organization in Houston, Texas, last November 1. In his new position he will be responsible to the board of directors for coordination of supply and transportation activities of the company's five divisions.

While at Kentucky, Moore was a member of Sigma Xi and Delta Tau Delta. He earned a master's degree in physical chemistry from UK in 1933 and in chemical engineering at the University of Michigan in 1934.

Before his promotion, Moore was a vice president and board member of Esso Standard Division of Humble in New York City after serving in the same capacities with another Jersey Standard affiliate, Esso Export Corporation, in 1957 and 1958.

A native of Clinton, Kentucky, Moore is married to the former Miss Erna Guettler of Roselle Park, N. J. They have two daughters and a son and live at 232 Watchung Fork, Westfield, N. J.

KENNETH HATFIELD, '55, was graduated from the Medical College of Virginia and is serving his internship at St. Joseph's Mercy Hospital in Ann Arbor, Mich.

## Boyd Named Institute Director At Michigan

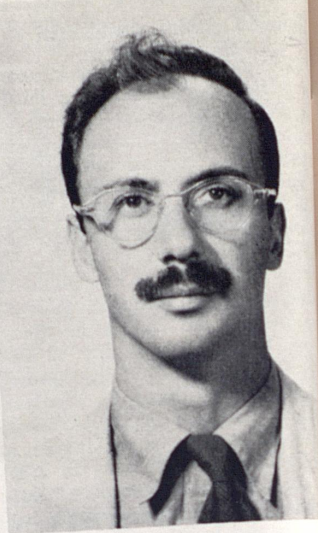
Joseph A. Boyd was appointed director of the Institute of Science and Technology at the University of Michigan recently. The UM Willow Run Laboratories, which he headed, were made a part of the Institute.

Boyd has been on the UM faculty since 1949 and a full professor of electrical engineering since 1958.

Boyd, 39, received a bachelor's degree in 1946 and a master's in 1949 from the University of Kentucky. He received a doctor of philosophy degree from the University of Michigan in 1953.



Thomas W. Moore, '33



Luis Eades, '52

## Lt. Col. Wade Heads ROTC At Furman

Lt. Col. Dallas C. Wade, class of 1934, was recently named head of the ROTC Department of Furman University, Greenville, S. C.

During World War II, he served with the 37th Infantry Division in the South Pacific Theater. In 1944-45 Col. Wade served as an instructor at the Infantry School, Ft. Benning, Ga. Later he served two tours of duty in Germany: one as Inspector General, Augsburg Military Post, and one as Battalion Commander in the 102nd Infantry, 43rd Infantry Division with seven months as Battalion Commander in the free territory of Trieste. Also he served approximately two years as Assistant Inspector General, Headquarters USAREUR, Heidelberg, Germany. His last assignment was as Executive Officer, Deputy Chief MAAG Training, MAAG Vietnam.

JACK A. MARSHALL, who attended UK from 1937 to 1940, is manager of the Boston branch of the Institution for Savings in Roxbury. Marshall was graduated from Harvard and received the LL.B. degree from Northeastern University.

## Represented In Exhibits

Luis Eades, member of the art faculty at the University of Texas, during the past year has been represented in several important art exhibits. In addition, he won honorable mention in exhibitions at the Center Gallery, NYC, and Connecticut Academy of Fine Arts, Hartford.

In 1960 he exhibited at the Eastern States show, Springfield, Mass., and with the American Artists of America exhibition, Sarasota Art Association exhibition, American Watercolor Society training show and Silvermine Guild of artists exhibition.

His work is represented in the permanent collections of Whitney Museum of Art, NYC, Butler Institute of American Art, Youngstown, Ohio, and in the private collections of several prominent art collectors.

Eades is a native of Madrid, Spain. He received most of his education in England and the bachelor's degree in 1952 from the University of Kentucky.

JOE H. JONES recently received his doctor of philosophy degree from Ohio State University. He received the M.S. from UK in 1954.





Dr. K. G. Kohlstaedt, ex '28

### Heads Medical Research

Dr. Kenneth G. Kohlstaedt was recently named executive director of medical research of Eli Lilly and Company, Indianapolis, Ind.

Dr. Kohlstaedt was born in Indianapolis and attended the University of Kentucky from 1925 to 1928. He took his medical degree at the Indiana University School of Medicine. He was assistant superintendent of Marion County, Ind., General Hospital when he joined the company in 1935. He has long engaged in research on problems of the heart, blood and circulatory system.

### RENFRO PROMOTED AT IBM

John S. Renfro, staff engineer, patent engineering department, at International Business Machines Corporation's Owego, New York, facility, has been promoted to proposal administrator for IBM's Federal Systems Division Marketing and Services department.

Renfro joined IBM at Endicott, New York, in 1950. He was promoted to manager of technical writing at Owego in 1956 and to his former position in patent engineering in 1958.

A native of Ravenna, Ky., Renfro received a bachelor of science degree in electrical engineering from UK in 1950.

### Landrum Appointed To Development Corp. Post

Robert K. Landrum, former vice president and trust officer of the First State Bank at Albany, Ga., and vice president of the Security Trust Co. in Lexington, on Jan. 1 assumed the first executive vice presidency of the newly-formed Business and Development Corp. of Kentucky.

B. Hudson Milner, executive vice president of the Louisville Gas and Electric Company, is president of the new \$3½-million privately managed and privately financed agency which will make growth loans to business and industry in the state.

Landrum, 38, a native of Lexington, holds a Bachelor of Science degree from UK, class of '47, a degree in physical sciences from the University of Chicago and a master's degree from Harvard Business School.

Upon graduation from Harvard, he entered the banking business as a trust clerk with the Security Trust Co. in 1949. He worked in every department of the bank and in 1956 was advanced to vice president, a post he retained until leaving in 1959 to accept the position with the Albany, Ga., bank.

During his 11 years with the Security Trust Co., Landrum served in all offices of the Lexington Clearing House Association and all offices of

### TOM DUNCAN HEADS NEWS BUREAU AT BOWLING GREEN

Thomas D. Duncan, a former reporter for the Associated Press and veteran of 13 years in the newspaper business, was recently named to head up a new bureau for the Louisville Courier-Journal in Bowling Green, Ky. He has worked for the Lexington Herald and the Lexington Leader, taught school at Clay and was a part-time instructor in journalism at the University of Kentucky. He is a graduate of Male High School in Louisville and holds an A.B. and M.A. from the University of Kentucky, class of '47 and '60.

Duncan is a native of Dixon where his father published a newspaper. His mother now edits Kentucky Business, a publication of the Kentucky Chamber of Commerce.

the Central Kentucky Conference of the National Association of Bank Auditors and Comptrollers. For two years he was Kentucky state vice president of the latter organization.

Authority to establish the Business Development Corp., was granted by the 1960 General Assembly at the urging of Lt. Gov. Wilson W. Wyatt who has investigated the success of a similar organization in North Carolina.

Wyatt has described the formation of BDC as "the most important single step in Kentucky's new economic development program."

The BDC's board of directors is composed of 21 Kentucky business leaders representative of the 243 participating Kentucky banks, insurance companies, utilities and other business interests.

The organization will stimulate business and industrial development in Kentucky by lending to enterprises which are unable to secure funds through normal channels.

### GERALD GRIFFIN HONORED

Gerald Griffin, veteran Courier-Journal newsman and head of the Louisville newspaper's Central Kentucky bureau in Lexington, was honored at a recent meeting in his former headquarters town of Pikeville. At the annual Kiwanis Club dinner, Griffin was cited by civic leaders for his service in interpreting Eastern Kentucky to the rest of the state and nation. He was also presented with a transistor radio by the Pikeville Chamber of Commerce.

He had headed the Eastern Kentucky bureau since 1950 until last May when he was transferred to Lexington after the death of Joe Reister. He is a 1922 graduate of UK.

\* \* \*

E. V. MURPHREE, class of '20, was general chairman for the New York meeting of the American Association for the Advancement of Science in December. He is president of Esso Research and Engineering Company.



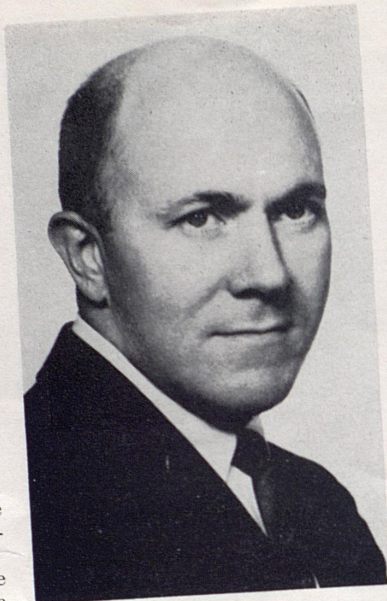
## Dr. Hermann Appointed To National Committee

Dr. E. R. Hermann, health engineer in the Baytown, Texas, medical department of Humble Oil & Refining Company's Humble Division, has been appointed to American Society of Civil Engineers' national committee on Sanitary Engineering Aspects of Nuclear Energy.

In 1959 Dr. Hermann received the Eddy Medal for outstanding research, and last year his work on water resources was cited by American Water Works Association.

Dr. Hermann holds the B.S. degree in civil engineering, class of '42, from University of Kentucky, the M.S. degree in sanitary engineering from M.I.T. ('49), and the Ph.D. degree in engineering from Texas University ('57).

Dr. and Mrs. Hermann have three sons and four daughters; they live in La Porte, Texas.



J. B. Williams, '42

## J. B. Williams Appointed

J. B. Williams, class of '42, in December was named Vice President and General Manager of Electronic Communications Inc., St. Petersburg division.

Williams joined ECI on January 1, 1960 as Vice President of Engineering. In his new position he will manage all St. Petersburg division activities including engineering, manufacturing operations, and marketing.

Immediately prior to joining ECI, J. B. Williams had been Director of Weapon System Engineering at Philco Corporation, Philadelphia, Pa.

## Gen. Ardery Takes Air Reserve Post

Reserve Brig. Gen. Phillip Ardery of Louisville, class of '35, will serve as Air Force director of information at headquarters in the event of mobilization, the Air Force said recently.

Ardery, recently transferred from the Air National Guard to the Air Reserve, will put in two weeks active duty training at the Pentagon each year to acquaint him with his mobilization assignment.



Donald Riester, '37

## DON RIESTER PROMOTED

Donald W. Riester has been named general manager of the American Can Company's Technical Service Division. He is in charge of all technical service laboratories in the United States and Canada.

Riester received his B.S. in Industrial Chemistry at UK in 1937. He joined American Can immediately after graduation and has held various technical and managerial positions at several parts of the country. His headquarters are at Maywood, Ill.

He lives at 490 Alma Avenue, Easton, Ill., with his wife Ethel and their three children.

## BONNIE GIBSON APPOINTED

Bonnie Gibson, '55, former instructor at the University of Kentucky and Transylvania College, recently been appointed co-director of the public relations department of Graphic Arts of Marin, Inc., a Coast publishing company.

This appointment will provide opportunity for Miss Gibson to complete her book-length manuscript while working on publication and distribution for Pacific Tales, first series published by the new

## PRESIDES AT CONFERENCE

Arthur W. Plummer, assistant vice president and director of research and development, Hudson Pulp & Paper Corp., South Windham, Me., presided over a major technical session during the 15th Engineering Conference of the Technical Association of the Pulp and Paper Industry (TAPPI), last October at Jacksonville, Fla.

Plummer is a 1939 graduate of the University of Kentucky with a B.S. degree, and holds a masters degree from the Massachusetts Institute of Technology. He is a member of TAPPI, and chairman of the Engineering Division of the Chemical Engineering Committee.

## SMART JOINS DELHI-TAYLOR

E. Holmes Smart, class of '49, has joined Delhi-Taylor Oil Corporation as district geologist in the company's southeastern region with headquarters in Lafayette, La. Prior to joining Delhi-Taylor, Smart was district geologist and manager of the Gulf Coast district for Cameron Oil Company in Lafayette.

Smart, his wife, and three children reside at 147 Karen Drive in Lafayette.





A. M. EDWARDS, JR., class of '29, is the new Secretary of Guam. Edwards, an attorney, has served as associate solicitor of the Department of the Interior since 1954. His appointment is for four years.



MORRIS T. CARPENTER, '30, was recently promoted by Standard Oil Company (Indiana) to an assistant director of administration at the Whiting, Ind., laboratories. In recent years he has held several supervisory administration positions in Whiting and Chicago.

#### ELECTED TO TWO OFFICES

Robert D. Hess, '36, was elected vice president of the Chamber of Commerce of the New Orleans Area and President of the Public Relations Society of America, New Orleans Chapter, in elections in December.

Hess was also elected chairman of Members Council of the Chamber of Commerce and as such will preside at the regular Thursday noon luncheons of this organization. Members Council is a forty year old organization of 650 members from within the Chambers membership of 6000 members.

He is assistant vice president of the National Bank of Commerce in New Orleans.

• • •

MRS. TYLER ABELL (Bess Clements), class of '54, has been named personal secretary to Mrs. Lyndon Johnson, wife of the U.S. Vice President. Mrs. Abell and her husband have two sons. The Johnson and Clements families have been friends for many years.

#### ARTHUR HODGES ELECTED PRESIDENT OF SOCIETY

Arthur L. Hodges, class of '24, has been elected president of the Nassau County (N. Y.) Historical Society. A Long Island newspaper editor since 1925, Hodges was editor of the Nassau Daily Review-Star, Long Island's first daily newspaper outside of Greater New York, for 25 years until it was sold to another organization and later merged with the Long Island Press of Jamaica. He has been a trustee of the Historical Society since 1936 when it was re-organized during the Long Island Tercentenary.

In recent years Hodges has edited several weekly newspapers in the area. He also operates a dairy farm at Sharon, Conn. Prior to going to Long Island Hodges was a reporter on the staff of the Lexington Herald for three years. He is a former president of the New York State Society of Newspaper Editors and was a member of the American Society of Newspaper Editors for many years.

#### FORREST POGUE PREPARING GEN. MARSHALL BIOGRAPHY

Dr. Forrest C. Pogue is preparing an official biography of the late General George C. Marshall, according to a recent announcement by General of the Army Omar N. Bradley.

Announcement of the publication plans was made by General Bradley in his capacity as head of the George C. Marshall Research Foundation. Dr. Pogue is director of the research center.

The biography, to be a three-volume work, will be based upon 500,000 personal papers of the late general and more than 50 hours of recorded interviews. General Marshall, who died Oct. 16, 1959, left his personal papers and archives to the research center, named in his honor. It is from these papers that the biography will be prepared. All financial returns will go to the foundation and will help to build a Marshall Library at Virginia Military Institute, the general's alma mater.

Dr. Pogue has been working on the Marshall papers for four years. He was a combat historian during World War II and is author of "Supreme Command," an official U.S. Army work concerning General Eisenhower's headquarters. He also co-authored the book, "The Meaning of Yalta."

In 1939, Dr. Pogue received a degree of Doctor of Philosophy from Clark University. He received a bachelor's degree from Murray State College in 1931 and an M. A. from the University of Kentucky in 1932.

#### MISS LYNN WOLF JOINS RESEARCH CENTER STAFF

Miss Lynn Wolf of San Francisco has joined the staff of Shell Development Company's Emeryville Research Center as a patent searcher in the patent division.

Miss Wolf is a 1957 graduate of the University of Kentucky where she received bachelor's degrees in medical technology and chemistry. She took graduate work at Stanford University, received her master's degree in chemistry last June.



## MISS LEWIS HONORED AT YULE CONCERT

University of Kentucky students, faculty, and friends of Miss Mildred Lewis, many from out of state, crowded Memorial Hall on Dec. 11 to hear the annual Christmas concert of the UK Choirsters, a group organized by Miss Lewis in 1931. This year Aimo Kiviniemi was on the podium and Miss Lewis in the audience.

At intermission Bernard Fitzgerald, head of the Music Department, presented "Millie" to the audience which rose to its feet in testimony of the affection it held for the "First Lady of Music" in Kentucky.

A scroll bearing the names of those who had contributed to the newly established Mildred Sinclair Lewis Scholarship Fund was presented to the professor emeritus.

Immediately after the concert Miss Lewis was honored at a reception in the music lounge of the Fine Arts building. In the receiving line were Dr. Frank G. Dickey, Miss Lewis, Dr. M. M. White, dean of the College of Arts and Sciences; Mr. Fitzgerald, and Mr. Kiviniemi.

Although Miss Lewis goes on change of work status with the University she will retain her office and is writing the history of music education in the state.

### THE MILDRED S. LEWIS MUSIC SCHOLARSHIP FUND

Colleagues, former students, personal friends and all whose lives have been touched by her influence may contribute to this scholarship fund for worthy music students. Checks may be made payable to "The Mildred S. Lewis Music Scholarship Fund" and mailed to Mrs. James S. Dailey, Chairman, Department of Music, University of Kentucky.



THOMSON R. BRYANT, director emeritus of the Kentucky Extension Service, was presented a certificate and a set of hand-made English pipes by Burl S. S. Clair, president of the Kentucky Farm Bureau Federation, at the organization convention in November at Lexington. Here he shows them to Louis F. Isaacs, Mercer County, second vice president of the State Farm Bureau. Bryant has been a Kentucky Farm Bureau director since it was organized 41 years ago and attended the first meeting of the American Farm Bureau in Chicago on November 11, 1919.

## Leonard Press Studies On Sabbatical Leave

Leonard O. Press, head of the Department of Radio, Television, and Films, is on a sabbatical leave for the 1960-61 academic year to study operations and procedures at selected radio and television stations throughout the United States. He will return to the University June 1, 1961.

Press, who came to the University in 1952 as program supervisor for WBKY and instructor in radio arts, was named head of the department in 1959. He received his bachelor's and master's degrees from Boston University.

## STUDIES EDUCATIONAL SYSTEM IN LEVITTOWN

Dr. James W. Gladden, UK professor of sociology, has been appointed a member of the special committee to study the educational system of Levittown, New York. He will meet with the eight-member committee to study controversial problems arising in the model town throughout the year.

Dr. Gladden was appointed to the committee by the Commission for the Defense of Democracy Through Education, a National Education Association organization.

Journalists students...  
cia Thuri...  
Anna M...  
land; Do...  
Quady;...  
Cynthian...  
Pope...  
Michele...  
land; J...  
Louisvill...  
Cardwell...  
David C...  
the UK...  
ter at As...

DR. LES...  
dean of me...  
tor of the...  
tute in adv...  
ance for tea...

Sears Four...  
Honor Mi...

The Sear...  
CARE rece...  
Gifford, pa...  
eral Feder...  
for her wo...  
ment progr...  
James V...  
Sears Four...  
tion recogn...  
ership in w...

Richard...  
of CARE, p...  
a scrapbook...  
taken durin...  
president o...

Two of...  
tenure wer...  
ment cont...  
Sears Four...  
of self-help...  
sponsored

Dr. Fra...  
of the Uni...  
briefly at t...  
Miss Gif...  
of the UK...  
Services, E...



Journalism scholarship students are: (left) Marcia Thurber, Louisville; Anna Mitchell, Ashland; Donald Lee, McQuady; Jane Gaffin, Cynthiana; Warren Pope, Catlettsburg; Michele Fearing, Ashland; John Pfeiffer, Louisville and Beverly Cardwell, Morgantown. David Carter attends the UK Extension Center at Ashland.



DR. LESLIE L. MARTIN, UK dean of men, has been named director of the University's summer institute in advanced counseling and guidance for teachers.

#### JOURNALISM SCHOLARSHIPS GIVEN TO NINE STUDENTS

Nine students are enrolled in the UK School of Journalism this year through the generosity of eight Kentucky newspapers. Granted by the School of Journalism Foundation the scholarships were made available by the *Ashland Independent*, the *Louisville Courier-Journal and Times*, *Lexington Herald-Leader*, *Park City News*, *Bowling Green, Paducah Sun-Democrat*, *Brandenburg Messenger*, *Hardinsburg Herald-News*, and *Russell Times*.

#### DR. JOKL HEADS U.N. COUNCIL'S RESEARCH GROUP

Dr. Ernst Jokl, UK professor of anatomy and physiology, has been elected president of the Research Committee of the United Nations Council on Sports and Physical Education.

The meeting was held this fall in Rome, Italy, at the U.N. headquarters of the Foods and Health Organization.

Dr. Jokl, in Europe on a lecture tour, presided as president of the Medical Congress at the Olympic Games in Rome.

He has spoken in Hungary, Czechoslovakia, and Berlin, Germany.

Dr. Jokl and Mrs. Jokl returned to the University in November.

#### Sears Foundation And CARE Honor Miss Chloe Gifford

The Sears Roebuck Foundation and CARE recently honored Miss Chloe Gifford, past president of the General Federation of Women's Clubs, for her work in community development programs.

James Worthy, president of the Sears Foundation, presented a citation recognizing Miss Gifford's leadership in work for a better America.

Richard Reuter, executive director of CARE, presented Miss Gifford with a scrapbook outlining programs undertaken during her administration as president of the woman's clubs.

Two of the major projects of her tenure were the community achievement contest, cosponsored by the Sears Foundation and the program of self-help for foreign countries, cosponsored by CARE.

Dr. Frank G. Dickey, president of the University of Kentucky, spoke briefly at the presentation.

Miss Gifford is assistant in charge of the UK Department of Community Services, Extended Programs.



←  
Dr. Niel Plummer, director of the University School of Journalism, is writing two current series of articles dealing with legal aspects of news. One appears weekly in *Publisher's Auxiliary* and the other runs monthly in *The Kentucky Press*. Dr. Plummer in 1959 was voted the "Most Valuable Member" award by the *Kentucky Press Association*.



## INTERNATIONAL EXPOSITION HONORS HAROLD BARBER

The University of Kentucky's long-time shepherd, the late Harold Barber, holder of an all-time record for wins in the sheep division of the famed International Live Stock Exposition at Chicago, was honored at the Exposition in November.

An English silver punch bowl has been purchased for the International in Barber's memory. W. P. Garrigus, International Exposition officials and sheep industry men participated in a presentation ceremony Saturday, Nov. 26 at the International's sheep show. Garrigus is associate director of the UK Experiment Station and head of the animal husbandry department under whom Barber worked until his death last Aug. 6. The trophy, a "challenge" cup, will remain for one year in the possession of each winner, the person showing the grand champion wether at the show. Each winner's name will be engraved on the silver trophy.

Barber, a native of England, first exhibited University of Kentucky sheep at the International in 1922. He took two first prizes, the beginning of a long string of class firsts, breed championships and all-breed grand championships. In 1959, Barber showed the last time.

In Barber's 37 years at the International, he showed eight single animals to grand championships, and seven pens to a similar title. Eleven times his singles or pens were reserve grand champions, and 51 times his animals took breed championships; behind these 51 champions were 30 reserve champions of the breeds. In his career he had 124 first places (in individual breed classes), 89 second places, 83 third places, 69 fourth places, 50 fifth places, 31 sixth places, 21 seventh places, 14 eighth places, 11 ninth places, 10 tenth places, and 19 placings below tenth.

All told, Barber's showmanship took him to 628 awards of various types in the tough International competition.

DR. SHELDON GREBSTEIN, UK assistant professor of English, has written a book on Sinclair Lewis.

## University Affairs

### UNDEFEATED DEBATE TEAM WINS 15 OF 16 AT ILLINOIS

A University debate team won 15 out of 16 debates in a tournament held at the Chicago branch of the University of Illinois in December.

The "A" team was the only undefeated team of the sixty schools represented.

The "B" team tied for second place with Augustana College, Rock Island, Ill., with seven wins and one loss.

"The win was nothing short of miraculous," said Dr. Gifford Blyton, debate team coach.

The "A" team included Ben Wright, Cadiz; Gary Wright, Bedford; Jay Roberts, Richmond; and Michael Snedeker, Owensboro.

The "B" team consisted of Bettye Choate, Herndon; Warren Scoville, London; Nancy Louhridge, Lexington; and Earl Oremus, Lexington.

### SHIPMAN ELECTED

Miss Martha V. Shipman, assistant professor of education, was recently named vice president of the Southeastern Region Association for Student Teaching.

Prof. Shipman was chosen by more than 200 delegates to the organization's two-day annual meeting. Dr. James Dickerson, University of Georgia, was chosen president.

### DEDICATES CENTER

University President Frank G. Dickey recently dedicated a new \$90,000 Wesley Foundation Center near the UK campus. In addition to a hall for parties and banquets, the newly-furnished, air-conditioned building contains a large auditorium with a stage for dramatics.

The Rev. Thomas Fornash is director of the center. More than 250 students are active at the Foundation. John Rothwell, Paducah, is president.

### Donovans Give Madison County Farm To UK

University of Kentucky President Emeritus and Mrs. Herman L. Donovan have formally deeded their 182-acre Madison County farm to the Kentucky Research Foundation at the University.

Dr. Donovan, who retired in 1957 after 15 years as president of the school, specified that the proceeds from the gift be used to "enrich the environment in which the students of the University of Kentucky live and to promote their appreciation of things beautiful and lovely."

"The farm is in an excellent state of cultivation and represents a very important addition to the assets of the Kentucky Research Foundation," Dr. Leo M. Chamberlain, foundation president, said.

Located on U.S. Highway 25 between Richmond and Berea adjacent to the U.S. Ordnance Depot, the farm will be operated strictly as a business venture by KRF and will not be used for experimental purposes, Dr. Chamberlain added.

"The gift—either the farm itself or proceeds that might result from its sale—will be held as an endowment by the Kentucky Research Foundation in the interest of the University," Dr. Chamberlain pointed out.

The place was named Battlefield Farm by the Donovans after they purchased it in 1934. It was the site of the severest fighting in the Battle of Richmond during the Civil War. The residence, which still shows signs of the battle, was used as a hospital and was partly destroyed in the clash.

Dr. Chamberlain said a marker will be placed on the farm indicating that it belongs to the foundation as a result of a gift by Dr. and Mrs. Donovan.

Dr. Donovan requested the proceeds be used for, but not limited to, "the beautification of the University campus, purchase of good and beautiful books, music programs and beautiful pictures."



## VANDERBILT'S LITKENHOUS HEADS UK'S SPINDLETOP RESEARCH INSTITUTE

Dr. Edward Earl Litkenhous, head of the chemical engineering department at Vanderbilt University and developer of the "Difference by Score" system of sports-event forecasting, in October was named research consultant for the University of Kentucky's Spindletop Research Institute.

He attended the Speed Scientific School of the University of Louisville where he graduated with honors. As a member of the graduating class of 1930, he was selected as a member of the staff training course at Goodyear Tire and Rubber Company, an honor given to thirty outstanding college graduates during the summer of 1930.

He returned to the University of Louisville as a fellow in chemical engineering and obtained his M.S. degree at the University of Louisville in June, 1931.

He then entered the University of Minnesota as a teaching assistant where he majored in chemical engineering and minored in physical chemistry. Dr. Litkenhous obtained his Ph.D. degree in the summer of 1934. He returned to Goodyear Tire and Rubber Company immediately after graduation.

In 1936 he was called back to his Alma Mater as an assistant professor of chemical engineering.

In 1941, he went to Vanderbilt University as head of the department of chemical engineering where he developed an accredited department.

His summers have been spent in special research for various companies. In the summer of 1955 he conducted research at Oak Ridge National Laboratories and in 1959 at Boeing Aircraft, Seattle, Wash.

In 1953, he developed the Division of Industrial Research at Vander-

bilt University with the purpose of serving local industry and finding research work to complement the Vanderbilt engineering staff. During a two-year period he developed industrial research for all the staff members at Vanderbilt desiring to do any engineering industrial research. He left this position when he was called to the National Science Foundation.

In 1956-57, he was appointed program director for engineering sciences at the National Science Foundation where he awarded over \$1,200,000 worth of research projects to engineers in the various universities throughout the country. During this period he was able to visit and survey the research being conducted in approximately 40 percent of the accredited institutions doing research in the United States. He has been a consultant for many corporations.

He is a registered professional engineer in the states of Kentucky and Tennessee and is a member of many societies.

Dr. Litkenhous married the former Mary Lenore Ingwolson of Mankato, Minnesota. She is a graduate of the University of Minnesota and also attended Gustavus Alolphus College. They have two sons: Edward Earl Jr., age 26, who was graduated in chemical engineering from Vanderbilt University and is now a senior in the Medical School and Linn Widdell, age 16.

Dr. Litkenhous was the originator of the various mathematical systems pertaining to research and sports. In 1929, he developed the Difference by Score system for mathematically presenting sports activities.

He has many publications and patents. In addition to this, he has conducted many researches which are classified.

CECIL CRAIG, instructor in mathematics at the University of Cincinnati, has received a fellowship for advanced study and research from the National Science Foundation. Craig attended UK in 1949-50.

BILL LICKERT was named the Most Valuable Player in the University Invitational Basketball Tournament. Lickert was the tourney's leading scorer.

THE KENTUCKY KERNEL, UK student newspaper, was judged to have the best straight news content of 55 college papers submitted for judging by Sigma Delta Chi, national professional journalism fraternity. It is the fourth time in the past five years the student publication has won a first place national award.

The UK DAIRY JUDGING TEAM finished third in inter-collegiate competition at the International Live Stock Exposition in Chicago. Seventeen college teams competed. The MEATS JUDGING TEAM ranked among 26 college teams competing.

## Committee Of 240 To Tell UK Story

Every county in Kentucky now has the opportunity to learn more about the University of Kentucky. A unique student organization known as the Committee of 240 has been formed and will reach into all of the state's 120 counties. Two upperclass students from each county will serve as representatives of the University in their home communities and will be available on vacations and between college semesters for talks before groups. Lewis Donohew, Director of Information Services at UK, is head of the committee.

DR. CHARLES F. DIEHL, professor of psychology and director of the UK Speech Center, is author of a chapter on "Voice and Personality" in a new book entitled *Psychological and Psychiatric Aspects of Speech and Hearing*.

GORDON NASH, coordinator of music events for University of Kentucky Extended Programs, has been awarded an honorary membership in the North Carolina Educators Association. He is a past president of the North Carolina association.



LAW ALUMNI DAY  
HELD IN OCTOBER

Saturday, Oct. 22, was Law Alumni Day at the University of Kentucky and included a reunion, general meeting of the Law Alumni Association, picnic lunch and Saturday night football game.

The event climaxed a weekend of activities for the College of Law which began with finals of the moot court competition. A banquet was held in honor of the Kentucky Court of Appeals and featured a talk by Dr. Robert J. Farley, dean of the University of Mississippi Law School and well-known legal humorist.

The Law Alumni Association meeting included a welcome by Miss Helen King, alumni director; greetings and remarks by Dean W. L. Matthews Jr., and presentation of an alumni organization plan by John J. O'hara, president of the group.

ALUMNI ASSOCIATION MAKES  
GRANT TO MUSIC DEPT.

The University of Kentucky Alumni Association made a grant of \$3,000 to the Music Department to assist in defraying the cost of sending the UK Band to the inauguration. The "Marching 100", one of 74 bands participating in the inaugural parade, has been known for years as "The Best Band in Dixie" and Kentuckians everywhere are proud of its achievements. The director of the group, Warren Lutz, is now in his eleventh year at the University, and all marching routines are planned by him. The band gave a command performance in the parade which was viewed by millions over nation-wide television.

→  
LLOYD CASSITY, Morehead representative, was recently chosen president-elect of the Joint Alumni Council of Kentucky. L. Berkley Davis (center) was the principal speaker at the election meeting. He was introduced by UK President Frank Dickey (right). The Alumni Council is composed of the alumni councils from the six state-supported colleges.

Alumni Association News



A magazine workshop for alumnors from the six public institutions of higher education featured the fourth annual meeting of the Joint Alumni Council of Kentucky, held last October 24 and 25 at Kentucky State College in Frankfort. Mrs. Ernest Wood, executive secretary of the Sweet Briar College Alumni Association, member of the board of the American Alumni Council and member of the board of Editorial Publications for Education, Inc., conducted the workshop. Shown above with Mrs. Wood are: Lee Robertson, Director of Alumni Affairs at Western Ky. State College and vice president of J.A.C.K.; Don Holloway, Morehead State College, president of J.A.C.K.; and Helen King, Director of Alumni Affairs at UK.



THE KENTUCKY ALUMNI

Topic For  
Announc

Dr. Karl C. Wenner-Gre Laboratory Chairman of has announced Fourth Ann 1961, will lemma and men in the fields will p and interest alumni and to attend. T opportunity for alumni a

Members Wendell D. Schwartz, D. R. W. Bought staff, and M

Friday, Ju held in the Fine Arts B sion schedul June 3, at C lowed by th Alumni Asso

Je The Jeffer gave a party Dame basket Approximate of the Unive held at the grounds. B. rector, Coac Harry Lanc liam "Nat" S club, was in

Kn The Knox ganized Nov held prior to football gam verty at th were Miss I Alumni Affa Secretary, an Director.

Lee Congl rin, Sr., led



## Topic For Seminar Announced By Lange

Dr. Karl O. Lange, Director of the Wenner-Gren Aeronautical Research Laboratory at the University and Chairman of the Seminar Committee, has announced that the topic for the Fourth Annual Seminar June 2-3, 1961, will be *The Space Age—Dilemma and Challenge*. Distinguished men in the scientific and defense fields will participate in this exciting and interesting program which all alumni and their friends are invited to attend. The seminar will offer an opportunity in continuing education for alumni and alumnae.

Members of the committee are: Dr. Wendell DeMarcus, Dr. Douglas Schwartz, Dr. Loren D. Carlson, Col. R. W. Boughton, Mr. John A. Biggerstaff, and Miss Helen King.

Friday, June 2, all sessions will be held in the Guignol Theatre at the Fine Arts Building with the final session scheduled for Saturday morning, June 3, at Carnahan House to be followed by the annual picnic of the Alumni Association.

## UK ALUMNI ASSOCIATION WINS CHALLENGE TROPHY

The University of Kentucky Alumni Association has won the Kentucky-Tennessee Challenge Trophy this year by defeating the University of Tennessee in acquiring more alumni memberships and contributions. The victory was decided on a percentage based on increase in members over last year. The trophy, given by Dr. Robert Yeager, President of L. G. Balfour Company, will be held for a year by Kentucky and was presented to the University of Kentucky Alumni officials between halves in Lexington the night of the Kentucky-Tennessee game, January 21, and will be presented again at the Kentucky-Tennessee game in Knoxville on March 4.

John Smartt, Executive Secretary of the UT Alumni Association, presented the trophy and B. A. Shively, treasurer of the UK Alumni Association and Director of Athletics, was master of ceremonies. Judge James A. Sutherland of Bloomfield, vice-president of the UK Alumni Association, received the trophy on behalf of the University of Kentucky Alumni Association.

## Fellowship Given By Tennessee Eastman Co.

A fellowship for M.S. degree study in engineering has been awarded the University by the Tennessee Eastman Company of Kingsport, Tenn., a division of the Eastman Kodak Company.

Since 1956, the University of Kentucky has also received two fellowships for Ph.D. degree study in chemistry from Tennessee Eastman. The fellowships are part of Kodak's aid-to-education program, which this year amounts to more than \$800,000, moderately above the corresponding total a year ago.

The Tennessee Eastman division produces man-made fibers, Tenite plastics, and a variety of industrial chemicals.

The engineering fellowship, which is for the 1961-62 academic year, provides \$1,500 for the student, who will be chosen by the University. In addition, the University will receive the actual cost of tuition and fees.

---

# Alumni Club Notes

---

### Jefferson County

The Jefferson County Alumni Club gave a party following the UK-Notre Dame basketball game December 7th. Approximately 200 alumni and friends of the University attended this affair held at the Kentucky State Fairgrounds. B. A. Shively, Athletic Director, Coaches Adolph Rupp and Harry Lancaster were guests. William "Nat" Sanders, president of the club, was in charge of arrangements.

### Knoxville, Tennessee

The Knoxville Alumni Club was organized November 17 at a meeting held prior to the Kentucky-Tennessee football game. Representing the University at the organizational meeting were Miss Helen King, Director of Alumni Affairs, Dick Rushing, Field Secretary, and B. A. Shively, Athletic Director.

Lee Congleton and Robert S. Perrin, Sr., led the drive in establishing

the new club. Mr. Congleton and Mr. Perrin were elected president and vice-president, respectively. (regrettably, Mr. Perrin died of a heart attack January 5 in Lexington.)

J. B. McComb was elected secretary-treasurer. Board members in addition to the above officers are: M. L. Vaughn, John C. Runyon, and Edgar O. Redwine.

Attending the meeting were: Mr. and Mrs. Lee Congleton, Mr. and Mrs. T. J. Mattingly, Mr. and Mrs. Robert S. Perrin, Sr., Mr. and Mrs. J. B. McComb, Mr. and Mrs. M. L. Vaughn, Mr. and Mrs. James Dundon, Mr. and Mrs. John C. Runyon, Mr. and Mrs. J. R. Rutter, Mr. and Mrs. Bernard E. Wilson, Mr. and Mrs. Edgar O. Redwine, Mr. and Mrs. E. B. Nisbet, Mr. and Mrs. W. S. Ligon, Mr. and Mrs. Glenn Bullock, Mrs. Frances Ramsey, Mr. and Mrs. Joseph P. Hammond, Mr. and Mrs. Everett A. Wick,

Willie S. Hudson, William Preston White, John E. Mathews, N. C. Boogher, Stanley Carter, Victor C. Hobday, Floyd P. Lacy, Jr., James P. Smith, Louis T. Inglehart, and L. B. Powers.

### Franklin County Club

The Franklin County Alumni Club held a dinner meeting January 10 at the Stagg Clubhouse with August Luscher, president, presiding. Prior to this meeting, the executive committee of the Alumni Association held its monthly meeting and attended the dinner. Judge James A. Sutherland of Nelson County, vice president of the UK Alumni Association, spoke to the alumni on the various programs of the association. New officers elected were: President, Don C. Hulette; vice president, Ben Fowler; secretary-treasurer, Mrs. John J. Hopkins II. Approximately 135 alumni and friends attended the meeting.



# 1961 CLASS REUNIONS—June 3, 1961

COME BACK TO UK IN JUNE!

GOLDEN ANNIVERSARY (50th) — Class of 1911

SILVER ANNIVERSARY (25th) — Class of 1936

40th ANNIVERSARY — Class of 1921

## CLASSES HOLDING SPECIAL REUNIONS:

1897	1907	1919	1954
1898	1916	1935	1955
1899	1917	1937	1956
1900	1918	1938	1957

Detailed information will be mailed to all alumni in reunion classes. If any group wishes to plan a special party or get-together, please write to the Alumni Office and so specify.

Alumni and alumnae, their husbands, wives, children, and friends are cordially invited to come back to KENTUCKY this June for a gala reunion. Those planning to attend should fill out the reservation blank provided and return it to the Alumni Office.

For further information write the Alumni Office, Room 124, Student Union Building, University of Kentucky, Lexington, Kentucky.

### FRIDAY, JUNE 2

FOURTH ANNUAL ALUMNI SEMINAR—*The Space Age—Dilemma and Challenge*  
Place: Guignol Theatre, Fine Arts Building—Morning and Afternoon

### SATURDAY, JUNE 3

FOURTH ANNUAL ALUMNI SEMINAR—Carnahan House, Newtown Pike, Lexington—10:00 a.m. to 12 noon

### ALUMNI DAY:

Registration and Coffee—10:00 a.m. to 12:00 noon, Music Room, Student Union

Picnic Lunch—12:30 p.m., Carnahan House. To be followed by annual meeting of Alumni Association

Reception—3:30 to 5:30 p.m., Maxwell Place—President and Mrs. Frank G. Dickey, hosts

Banquet—6:00 p.m., Ballroom of the Student Union

### SUNDAY, JUNE 4

BACCALAUREATE—4:00 p.m., Memorial Coliseum

### MONDAY, JUNE 5

94th ANNUAL COMMENCEMENT—10:00 a.m., Memorial Coliseum

(All Times Listed are Eastern Standard Time)

-----  
PLEASE FILL OUT BLANK AND RETURN AT ONCE TO ALUMNI OFFICE, ROOM 124,  
STUDENT UNION, UNIVERSITY OF KENTUCKY, LEXINGTON, KENTUCKY

### 1961 ALUMNI RESERVATIONS

Make ( ) No. of Reservations for the picnic Saturday, June 3, 12:30 p.m. (EST)

Make ( ) No. of Reservations for the Alumni Banquet, June 3, 6:00 p.m. (EST)

.....  
Name .....

Class Address .....

R. R. Da  
Given F

The R. I  
Bloomfield  
two engine  
versity on  
Christmas v  
buy gifts f  
associates.

Mr. Daw  
UK, annou  
\$500 schol  
Alumni Ass  
preference  
sons and da  
neers in the

The sch  
next Septem  
by the Uni  
arship Com  
be named in  
for other s  
R. E. Shave  
of Engineer

This pl  
Christmas  
in favor w  
and individ

Other co  
vided simil  
clude the A  
Products C  
ply and E  
Hinkle Com  
ates, Paris;  
Elizabethto

"I can th  
of good will  
of showing  
of financial  
state," Dear

HENRY  
the elemen  
Eastern Ke  
been appoi  
E. JAGGER  
of education  
dean of gra

EDWAR  
Iowa, receiv  
mental hort  
nesque Gar  
Mrs. Joe F  
club, and i  
vided the \$

THE KE



## R. R. Dawson Scholarships Given For Christmas

The R. R. Dawson Bridge Co. of Bloomfield and Lexington will send two engineering students to the University on the money saved last Christmas when the company did not buy gifts for professional friends and associates.

Mr. Dawson, a 1925 alumnus of UK, announced establishment of two \$500 scholarships through the UK Alumni Association, and asked that preference for selection be given to sons and daughters of practicing engineers in the state.

The scholarships, to be effective next September, will be administered by the University of Kentucky Scholarship Committee and recipients will be named in the same manner as those for other scholarships, according to R. E. Shaver, dean of the UK College of Engineering.

"This plan of providing living Christmas remembrances is growing in favor with many industrial firms and individuals," Dean Shaver said.

Other companies which have provided similar scholarships to UK include the Armco Drainage and Metal Products Co., Ashland; Central Supply and Equipment Co., Danville; Hinkle Contracting Co., and Associates, Paris; and Jenkins-Essex Co., Elizabethtown.

"I can think of no finer expression of good will, nor a more practical way of showing it than through this type of financial aid for the youth of our state," Dean Shaver said.

• • •

HENRY MARTIN, '50, director of the elementary training school at Eastern Kentucky State College, has been appointed dean of students. R. E. JAGGERS, '25, associate professor of education, was appointed associate dean of graduate studies.

• • •

EDWARD D. DONOVAN, Boone, Iowa, received a scholarship in ornamental horticulture given by the Rafinesque Garden Club of Lexington. Mrs. Joe F. Morris, president of the club, and its 21 other members provided the \$250 grant.



R. R. DAWSON, '25, presents a check for \$1,000 for two \$500 engineering scholarships to Miss Helen King, Alumni director. The scholarships were established through the UK Alumni Association.

W. G. CLUGSTON is author of an article titled "Primaries and Party Bosses" appearing in a recent issue of SPECTRUM, a publication of the University of Kansas. Clugston received the LL.B. degree from UK in 1910. For many years he was Kansas political reporter for the Kansas City Journal-Post and has written numerous articles and four books.

• • •

STANLEY M. TARTER, class of 1950, has been promoted to senior patent attorney in charge of patent department installation at the Pensacola, Fla., nylon plant of The Chemstrand Corporation.

JOHN PAUL RIEBEL, '24, member of the English faculty at California State Polytechnic College, San Luis Obispo, Calif., is author of a book titled "How To Write Successful Business Letters In 15 Days", published by Prentice-Hall, N. Y.

• • •

GEORGE N. REYNOLDS, class of '50, has been appointed managing editor of Monsanto Chemical Company's 'Monsanto Magazine,' after serving with the public relations department's central office in St. Louis, Mo.



**COLLIER CHALLENGES TEAM**

Expressing a hope that next year's Alumni Football Banquet would celebrate something more than a tie or win over Tennessee, Coach Blanton Collier challenged next season's team to make the 1961 banquet an event to celebrate Kentucky playing in a post-season bowl game.

More than 400 persons attended the annual dinner on December 12 on campus. L. Berkley Davis, president of the UK Alumni Association and vice president of General Electric, presided at the dinner. UK President Frank G. Dickey brought greetings to the dinner guests.

Watches were presented to the graduating seniors and senior managers on behalf of the Alumni Association. They are: Leeman Bennett, Calvin Bird, Jerry Eisaman, Jim Fisher, Frank Goetz, Lloyd Hodge, Tom Hundley, Bob Hunt, Harry Johnson, Dickie Mueller, Don Nurge, Jimmy Poynter, Jim Reader, Tom Rodgers, Bill Scott, Don Sinor, Charles Sturgeon and Jim Yarbrough.



Principals at the annual UK Alumni Football Banquet were Coach Blanton Collier, L. Berkley Davis, president of the UK Alumni Association who presided at the banquet, and star UK halfback Charlie Sturgeon (right). Sturgeon was presented the leadership award.

*Don't You Want To Be One Of The Select 500?*

**CENTURY CLUB**

Alumni Association—University of Kentucky  
1865-1965

Here is my contribution to the University of Kentucky Alumni Century Club Fund in the amount of \$..... I hereby pledge to pay \$100 annually on the dates listed below; or until my contribution totals \$500.

.....  
SIGNED

.....  
HOME ADDRESS

.....  
BUSINESS ADDRESS

.....  
CLASS YEAR

.....  
DATE

Year	Month	Amount
1961	.....	\$100
1962	.....	100
1963	.....	100
1964	.....	100
1965	.....	100

All contributions are tax deductible and checks should be made payable to *University of Kentucky Alumni Century Club Fund*. Mail direct to Alumni Office, UK, Lexington, Ky., or write for further information.

THE KENTUCKY ALUMNI

Before it  
1960-61 Sou  
ketball race  
record book  
topsy-turvy  
vance wor  
Adolph Rup  
Kentucky sh

And, as  
outfits of th  
home stretch  
surprising fo  
ing the Rup  
spite the fa  
tered unpre

Kentucky  
basketball p  
figured to b  
lead, was "o  
But, even  
nated Missi  
manding lea  
ference win  
gered in fift  
Kentucky st

Coach Ru  
would be fo  
still rate in  
the SEC ch  
see that Mi  
its remainin  
even though  
selves by wi  
the season.  
er teams (L  
LSU) ahead  
assure you  
lot to say ab  
standings."

Observers  
tion in the  
Rather it w  
a good show  
gain prestig  
as the ones  
ane and Ge

It had be  
a Kentucky  
much troub  
cularly with  
had dominat  
founding in

Most of  
brought on  
tucky prove  
ember to l  
given night  
ally ranked  
road and to  
Dame and  
battles. Bu

THE KENTUCKY ALUMNI

THE KENTUCKY ALUMNI



Before it became apparent that the 1960-61 Southeastern Conference basketball race would etch itself into the record books as undoubtedly the most topsy-turvy one in history, the advance word on the Wildcats of Adolph Rupp was simply: "Don't sell Kentucky short!"

And, as the 12 embattled cage outfits of the league headed into the home stretch of a race that had taken surprising form, the warning regarding the Ruppmen still held good despite the fact that they had encountered unprecedented trouble.

Kentucky, like four or five other basketball powers of the conference figured to be fighting it out for the lead, was "on the outside looking in." But, even though sophomore-dominated Mississippi State held a commanding lead of seven straight conference wins and the Wildcats lingered in fifth place with four setbacks, Kentucky still was far from dead.

Coach Rupp put it this way: "It would be foolish to suggest that we still rate in the favorite category for the SEC championship. I can't foresee that Mississippi will lose five of its remaining seven league games even though they have to prove themselves by winning on the road late in the season. And, there are three other teams (Florida, Vanderbilt and LSU) ahead of us as well. But I can assure you that we intend to have a lot to say about this matter of the final standings."

Observers noted no air of desperation in the veteran coach's statement. Rather it was determination to make a good showing in the stretch to regain prestige lost with such setbacks as the ones to Vanderbilt, LSU, Tulane and Georgia Tech.

It had been a long, long time since a Kentucky team encountered so much trouble and frustration, particularly within the league which they had dominated so completely since its founding in 1933.

Most of these troubles were brought on by inconsistency. Kentucky proved themselves back in December to be a capable outfit on a given night as they trounced nationally ranked North Carolina on the road and toppled the likes of Notre Dame and Illinois in pressure-laden battles. But they also were inconsis-

sistent as the dropped encounters to such underdogs as Florida State and Temple.

Aside from being inconsistent, Kentucky's losses—there were seven of them including four within the SEC at the mid-February turning point—came as the result of the poorest shooting accuracy that has plagued a UK team in many a moon. You had to go back to 1955 to find an appreciably poorer field goal shooting mark than the 37.2 per cent being recorded through the first 17 games by the 1960-61 outfit. The mark was far below normal for UK fives and ranked as one of the worst in the conference even though a couple of hot streaks on the home court bolstered the average.

The inconsistency was evident in Coach Rupp's juggling of his lineup in an effort to find the right combination. About the only consistent starters were two-time All-Conference handyman Bill Lickert and improved Larry Pursiful, junior from Four Mile, Ky. Big Ned Jennings, who was coming fast in the stretch, had ridden the bench a few times during lapses in achieving his potential as had Roger Newman, playing his first and last varsity seasons due to eligibility rules;

## Sports News

By KEN KUHN  
UK Sports Publicity Director

Captain Dickie Parsons; Carroll Burchett; and Allen (Horse) Feldhaus.

Only twice before in its history (last season and 1940) had a Kentucky basketball team lost four games to conference opponents; never had they dropped three in a row in SEC play; and their record in the first half of the season was approached only by a 7-7 mark in the 1940-41 season during the Rupp Era.

But all these poor records by Kentucky were being equalled by other traditional powers of the SEC during one of the strangest years in history. Georgia Tech, Tennessee, Auburn, Mississippi and Tulane all were having more than their usual share of troubles and were buried deeper in the league standings than Kentucky despite being figured as the teams to beat in pre-season forecasts.

Through the remainder of the season up to the mid-February point, the Cats loomed as an improving ball club even though they did drop a return engagement at Atlanta to Georgia Tech—by two points. And the outlook was a little brighter as they took to the road aiming to revise the standings somewhat by beating Ole Miss and league-leading Mississippi State.

The University of Kentucky Alumni Association's basketball banquet, honoring the 1960-61 varsity and freshman squads and coaches, will be held Tuesday night, March 14 at six p.m, E.S.T. in the ballroom of the Student Union.

Alumni and friends of the teams are invited and tickets are on sale in the Alumni Office, Room 124 Student Union. Those interested in attending may obtain tickets by telephoning 2-2200, Extension 2153 or by writing the office. No reservations will be accepted after five p.m. Monday, March 13.



## PROFESSOR KELLEY DIES

Professor James B. Kelley, 71, retired professor of agricultural engineering at UK, died Dec. 23 at his home in Lexington following a heart attack.

He retired Sept. 1, 1959, from the UK faculty as head of agricultural engineering. In 1956 he received a bronze plaque in recognition of his service to the rural electric co-operative program in Kentucky, presented by the Kentucky REC.

Survivors include his wife and two daughters.

## MRS. JESSE E. ADAMS DIES

Mrs. Jesse E. Adams, educator and lecturer, died in December in Cleveland, Ohio, after a short illness. She was an instructor in the UK College of Education and former dean of girls at Lafayette high school, Lexington. She also served as a lecturer for the National Guidance Association.

She is survived by two sons.

## MRS. O. T. KOPPIUS DIES

Mrs. Mary Townsend Koppius, wife of the UK physics professor, died in November in Lexington following a long illness. She had been a resident of Lexington since 1924.

Survivors include her husband, two daughters and a son.

## OBITUARIES

OMER CARMICHAEL of Louisville died January, 1960. He was granted an honorary LL.D. degree from UK in 1957.

THOMAS ROLAND DEAN died Nov. 30 in Colorado Springs, Colo., where he had practiced law for many years. Dean, class of 1896, is survived by his wife.

EUGENE ALLEN EDMONDS, class of 1919, died June 10 after a short illness. He was an employee of the Henry Voght Machine Co. in Louisville for 35 years. Survivors include his wife and a daughter.

MRS. ELLEN C. PARKER HILLENMEYER, 38, died Oct. 9 at her home in Aberdeen, Ohio. Her husband is a tobacco buyer and dealer. Survivors include her husband, three daughters and a son.

MISS ANNELLE KERR KELLEY, first principal of Cassidy school, Lexington, died in November after a brief illness. She was a 1925 graduate of UK and taught in the Lexington school system for 25 years. She is survived by a sister.

EDMOND SHELBY KINDEAD, Fayette county deputy sheriff for the past 29 years, died Nov. 31 in Lexington. He attended UK in 1903-1905. Survivors include his wife.

JOHN D. LANCASTER, class of '31, died in November at his home in Louisville. He was an employee of the Alcoholic Tax Unit, U.S. Treasury Department. Survivors include his wife and a daughter.

CORNELIUS R. LISANBY, U.S. gauger in the Alcohol and Tobacco Division of the Internal Revenue Department, died Nov. 8 in Lexington. Lisanby, class of 1920, is a former principal of Garth high school, Georgetown. Survivors include his wife, a daughter and two sons.

DR. THOMAS MERIWETHER MARKS, Lexington pediatrician, died in December in Lexington after an illness of eight months. Marks, class of '13, had been attending Marks, class of '13, had been attending hospital pediatrician at Good Samaritan hospital and consultant at St. Joseph hospital. Survivors include his wife, two daughters and a step-daughter.

THOMAS CHENAULT McCOWN, class of 1917, Woodford county farmer, died in November at his home following a heart attack. Survivors include his wife and a daughter.

MARCUS L. NAPIER, class of '28, died recently in Hialeah, Fla. He formerly lived in Hazard and was principal of Vicco high school. He was associated with the Miami Airport. Survivors include his wife and two daughters.

DONALD LEE TAYLOR, class of '59, was electrocuted on Dec. 12 while attempting to repair a camp light system at Herrington Lake. He was a sales representative for Belknap Hardware Co., Louisville. Survivors include his wife and a daughter.

MRS. BETSY BENNETT WOODFORD, class of '30, died in December after an illness of three months. Survivors include her husband of Lexington and two sons.

## ALMA MAGNA MATER

To JACK J. EARLY, '54, and Mrs. Early of Mitchell, South Dakota, a daughter, Judith Ann, on October 14, 1960.

To LLOYD W. MASSEY, '55, and HELEN VANCE GILB MASSEY, '56, of Washington, D. C., a son, Ted W., on July 30, 1960.

To VERNON C. POTTER, '55, and MARGARET ANN HOLYFIELD POTTER, '55, of Oak Harbor, Ohio, a daughter, Jeanine Katharine, on Sept. 13, 1960.

To Thomas W. Green and E. MARIE EDWARDS GREEN, '57, of Louisville, Ky., a daughter, Teri Lynn, on Sept. 18, 1960.

To DONALD S. FULLERTON, '58, and PATRICIA HARRIS FULLERTON, '59, of Ashland, Ky., a daughter, Laura Ann, on Sept. 2, 1960.

## ALUMNI NUPTIALS

1940-1950

Donald L. Rogers to HELEN LONG, '41, both of Washington, D. C. last October in Lexington.

RALPH R. BACH, '46, of Mt. Sterling to Mary Ann Lunsford of Dover on Oct. 22 in Dover.

WILLIAM F. SIMRALL, '50, to Mary Louise Sehrman in September.

1953

STANLEY SMITH DICKSON, JR., '53, of Atlanta, Ga., to ROBERTA H. MOBERLEY, '60, Mt. Sterling, Ky., and Atlanta on Dec. 17 in Mt. Sterling.

1955

JONAS P. SHUGARS, '55, of Campbellville to JESSIE SUE ALLEN, '55, of Lexington on Dec. 18 in Lexington.

1956

HUGH S. WOODALL, '56, of Carlisle and Dayton, Ohio, to Mary Ann Bogin of Dayton last November in Dayton.  
Owen D. Earnshaw of East Greenwich, R. I., to JUDITH BOTELER, '56, last February in France.

1957

JAMES EDWARD HORNER, '57, to MARYLAND JEAN LONGWELL, '60 on Nov. 26 in Bath, N. Y.

MARK E. GORMLEY, '57, of Versailles to JoAnn George of Lebanon last October in Lebanon.

LESLIE D. ABERSON, '57, of Lexington to Regene Jo Lowenstein of Louisville last October in Louisville.

Carl Andrew Britton of Versailles to JANE BOGGS COLE, '57, of Lexington on Nov. 18 in Lexington.

1958

Joseph B. Dixon, Jr., of Washington, Pa. to ROSELLA BROWN, '58, of Mt. Sterling last October in Mt. Sterling.

GERRY LYNN CALVERT, '58, of Lexington and Maysville to Lois June Tudor of Irvine last Sept. 25 in Lexington.

Ancel J. Dillender of St. Louis to ALMA VIRGINIA LANCASTER, '58, of Lexington and St. Louis last November in St. Louis.

John P. Raleigh of Detroit, Mich., to ANNE ROSE MAHLER, '58, of Mt. Sterling last October in Detroit.

RALPH THOMAS FOSSETT, '58, of Portsmouth to Barbara Collett of Lexington on Dec. 24 in Lexington.

RICHARD C. POTTER, '58, of Louisville to Patricia E. Moore of Nashville, Tenn., on Aug. 25th in Nashville.

Rev. Robert W. Sheffer of Bowling Green to DIANE DE MOISEY, '58, of Georgetown last Aug. 19.

1959

SAMUEL E. HALE, JR., '59, of Lexington to Carole L. Pace of Ashland last September in Ashland.

1960

David L. Trosper of Lexington to MARY LYNN LOVING, '60, of Ashland on Oct. 10 at Jellico, Tenn.

MILLARD V. MOORE, JR., '60, of Ashland to Mary Jo Hutchens of Lexington last September in Lexington.

Dr. Vertrees Hollingsworth of Lexington to ALICE E. BROADBENT, '60, of Hopkinsville last October in Lexington.

FLOYD H. CRISWELL, '60, of Cynthiana to ANN LEE DUNAWAY, '60, of Baltimore, Md. last October in Baltimore.

ROBERT J. LEWIS, '60, of Georgetown to Judith M. Campbell of Lexington last Aug. 14 in Lexington.

Lawrence P. Yates to ELIZABETH GRAGG, '60, both of Lexington, on Nov. 14 in Lexington.

Ens. BOBBY JOE HOUNSHELL, '60, Carolyn Ann Moore, both of Lexington, on Dec. 24 in Lexington.

Lawrence E. Jewell of Pineville to ELLEN BETH ANN NEEL, '60, of London on Nov. 19 in London.

ROBERT H. PRATER, '60, of Washington, D. C., to Mary Jo Hyden of Paris on Dec. 10 in Paris.

RONALD R. JOHNSON, '60, of Lexington to Marilyn June Tucker of Somerset on Dec. 23 in Lexington.

RICHARD COBB JETT, JR., '60, of Lexington to LINDA LOU SOTO, '60, of Charleston, W. Va., on Dec. 18 in Lexington.

Miss Mary Hester Cooper  
319 Lexington Avenue  
Lexington, Kentucky