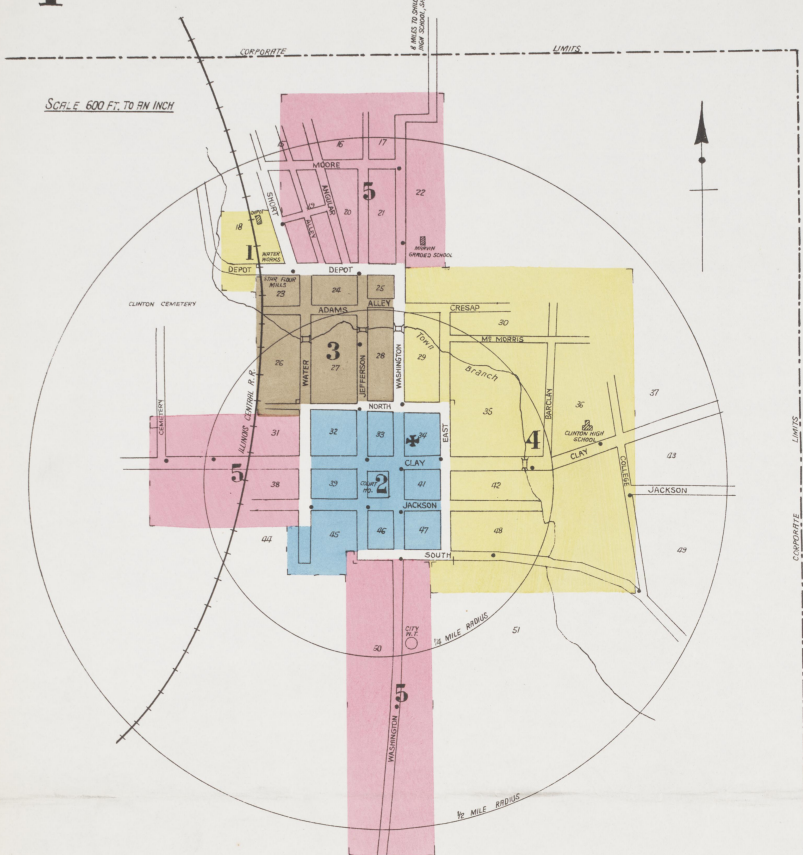


INCLUDING
ARLINGTON

SCALE 500 FT. TO AN INCH



WATER FACILITIES:

Water Works owned & operated by Clinton Light & Water Co. Inc. - Gravity & direct pressure system of Water Works - Source of supply 2 deep wells, water is pumped from wells into 40,000 gal. reservoir by 2 air compressors operated by steam & fire boiler by elec. Water is then pumped from reservoir into mains & 40,000 gal. water tank - elev. about 75' above Pumping Station, by one - Platt Iron Works compound steam pump, capacity 400 gals. per min. & one Dayton Dwyer centrifugal elec. pump, capacity 400 gals. per min. - Domestic pressure 65 lbs., fire pressure 125 lbs. - 37 double hydr. - about 3 miles of 4" to 8" water mains - Average daily consumption 160,000 gals. -

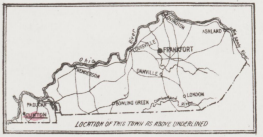
FIRE DEPT:

Volunteers, one chief & 6 men. - 2 hand drawn hose reels with 500' of 2 1/2" hose in each - 1 H & L hand drawn truck - Alarm given by whistle at Pumping Station - No fire limits - Grades rolling - Principal streets macadamized - Public lights electric -

INDEX

Table with columns for Streets, House Numbers, and Building Names. Includes entries like Adams Alley, Baltimore and Columbus Road, and various churches and schools.

KEY
This block contains a legend for symbols used on the map, such as roof types, window styles, and fire station locations.

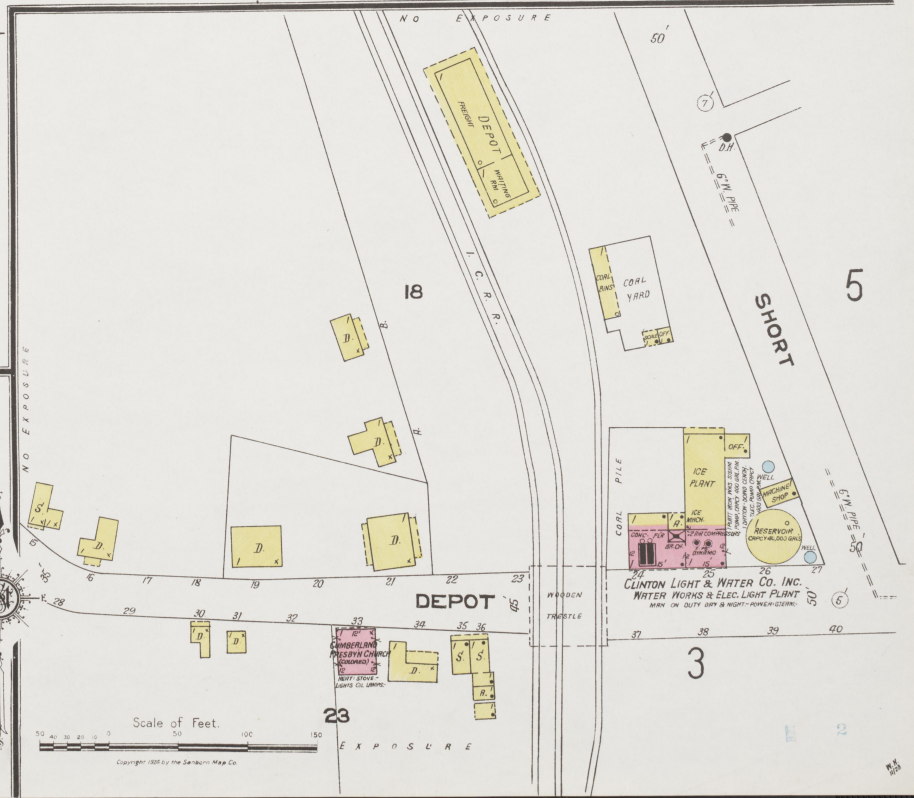


SHILOH CONSOLIDATED HIGH SCHOOL
NOTE - PLUMBING - LIGHTING - GASWORKS - CONC. FOUNDATION - From Plans

Located 8 Miles N.E. of Clinton

BALTIMORE & COLUMBUS RD.

102



Scale of Feet.
Copyright 1925 by The Sanborn Map Co.

2

3

4

2

NORTH (CHURCH)

Oct 1923
CLINTON
KY.

32
(5)

33
(6)

34
(7)

CLAY

5

WATER

JEFFERSON

HICKMAN COUNTY COURT HO

WASHINGTON

41
(10)

EAST

4

JACKSON



45
(12)

46
(13)

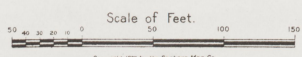
47
(14)

44

5

4

SOUTH



Copyright 1923 by the Sanders Map Co

OCT 1923
CLINTON
KY.

1285

DEPOT

STAR MILLING CO. INC
FLOUR MILL

REFORMER ME
CHURCH
(MADON'S GARDEN
& NEAR STUBBLE
2 1/2 ACRES 2 1/2 ACRES)

ADAMS ALLEY

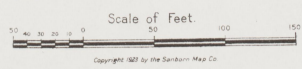
ADAMS ALLEY

ARBITRARY

WASHINGTON

JEFFERSON

NORTH 45
40' (CHURCH)



SCALE 100 FT TO AN INCH

OCT. 1923
CLINTON
KY.



Scale 100 ft to One Inch.

0 100 200 300

Copyright 1923 by the Sanborn Map Co.

5

2

(13)

2

22' SOUTH - 22' 00"

4

(14)

N O E X P O S U R E

50

WASHINGTON

51

1

SPUR

19

SAW MILL YARD

CORR. YARD

FRITER - FOOD FRGT. PORTER & STOCKED

DEPOT

WATER ST

CEMETERY

CLAY

31

38

44

JACKSON

WATER

2

MOORE

ANGULAR

JEFFERSON

DEPOT

3

3

3

2

15

16

17

MOORE

ANGULAR

JEFFERSON

DEPOT

3

3

3

2

SCALE 100 FT. TO AN INCH
ENTIRE SHEET.

OCT. 1923
CLINTON
KY.

5

22
(10)

4

4

4

4

4

4

4

4

4

4

4

4

4

4

4

4

4

MARYIN GRADED SCHOOL

Scale 100 Ft to One Inch.
Copyright 1923 by the Sanborn Map Co.

N O E X P O S U R E

N O E X P O S U R E

ARLINGTON

OCT. 1923
CLINTON
KY.

POPULATION: 800. PREVAILING WINDS: S.W. & N.E.

WATER FACILITIES: None

FIRE DEPT.: Volunteer, 1 Chief & 12 men, 1 Ford
chem. auto truck with 2 40 gal. chem. tanks, 300'
chem. hose, 2 2 1/2 gal. chem. extinguishers, ladders &
water pump, fitted by telephone & siren on
truck. No Fire Limits

Grades slightly rolling. Streets unpaved. Public
lights: electric.



ARLINGTON ROLLER MILLS
BOYD & FLEGG, PROPS
FLOUR MILL
CAPY: 100 BLS PER 24 HRS
NO WATCHMAN, HEAT, STEAM
LIGHTS: ELEC. POWER, STEAM
FUEL: COAL. NO FIRE APPS.

SEARS & NICKOLS CANNING CO.
CANNING FACTRY
HEAT: WATCHMAN & CLOCK
HEAT, STEAM, LIGHTS, ELEC.
POWER, STEAM. NO FIRE APPS.

W. H. NEVILLE, FLOUR MILL
CAPY: 60 BLS PER 24 HRS.
NO WATCHMAN, HEAT & POWER.
STEAM, LIGHTS: ELEC. FUEL:
COAL. NO FIRE APPS.

BAPTIST CHURCH
HEAT: STEAM
LIGHTS: ELEC.
FUEL: COAL

Scale of Feet.
0 50 100 150

Copyright 1923 by the Sanborn Map Co

7

7

OCT. 1923
CLINTON
KY.

80
ARLINGTON

81

82

83

CHESTNUT

WALNUT

CHESTNUT

ST.

2ND ST.

1ST ST.

COLUMBUS RD

HOBBS

HOBBS

ARLINGTON

OAK

DARK TOBACCO
GROWERS CO-OPERATIVE
ASSOCIATION
TOBACCO PAZERY &
WARE HO.
ROOF FULL OF SKYLIGHTS
HEAT STOVES - NO LIGHTS

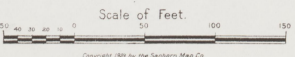
Farm Implements
W. HO.

GARAGE
HEAT STOVES - LIGHTS - ELEC.
CAPAC. 30 CAR. - CONCR. B.
FL. - 3 PYREXES

E. E. CAMPBELL LUMBER CO.

M.E. CHURCH
(SOUTH)
HEAT STOVES - LIGHTS - ELEC.

MASONIC HALL
WARE HO.
STORAGE



Copyright 1923 by the Sanborn Map Co.

NO EXPOSURE

12

85