



Map of Corbin, Kentucky, showing streets, buildings, and other features. The map is color-coded by block numbers 1 through 8. A north arrow is present in the upper left quadrant.

**WATER FACILITIES**  
Not shown.  
Supply from private systems, Wells, Linn Camp Creek and privilege of using L. N. R. H. pipes which are up of 14 feet connected with 4500 gal. Reservoir giving a pressure of 40 lbs per sq. inch.

**FIRE DEPT.** Not Organized.  
King Hand Fire Engine, carrying 60 gal. Chemical Tank.  
400 ft. Hose - 35 Fire Pails.  
2 Horses, not equipped with driving Harness.  
Public Bell System.  
Streets, Not paved.  
Public Lights: Electric.

### INDEX

STREETS	SPECIALS
Bull, see College	Amateur Skating rink..... 2
Barhorneville Road	Christian Church..... 1
Bell	Baptist Church..... 1
College	Central Hotel..... 2
Centre	Christian Church..... 1
East	City Court House and Jail..... 2
Easton	Coliseum Skating rink..... 4
Fifth	Deoprogical Church..... 4
First	Corbin Ice & Carboasting Co..... 4
Florence Ave., see Railroad	Steam Laundry Co..... 2
Fourth	Docks Hotel..... 2
Gastineru	Early, R. A., Fleming Mill..... 2
Geodon	Hotel Corbin..... 2
Hart	Fire Department..... 2
Hill	First Methodist Episcopal Church..... 4
Kentucky Ave.	Home Electric Light Co..... 5
Laurel Ave.	Hotel Corbin..... 2
Main	L. & N. R. R. Depot..... 2
Masters	Road House, etc..... 5
Monroe	Methodist Episcopal Church (South)..... 3
Poplar	Nichols Hotel..... 3
Railroad	Opera House..... 3
at South Corbin	Foot White Laundry Co..... 2
Second	Presbyterian Church..... 2
Sixth	Public School..... 2
Third	Railroad T. M. C. A. A..... 4
Union	Sacred Heart Catholic Church..... 2
White	Wither Hotel..... 2

**KEY**

FIRST WALL ON 2ND FLOOR  
 SECOND WALL ON 3RD FLOOR  
 THIRD WALL ON 4TH FLOOR  
 FOURTH WALL ON 5TH FLOOR  
 FIFTH WALL ON 6TH FLOOR  
 SIXTH WALL ON 7TH FLOOR  
 SEVENTH WALL ON 8TH FLOOR  
 EIGHTH WALL ON 9TH FLOOR  
 NINTH WALL ON 10TH FLOOR  
 TENTH WALL ON 11TH FLOOR  
 ELEVENTH WALL ON 12TH FLOOR  
 TWELFTH WALL ON 13TH FLOOR  
 THIRTEENTH WALL ON 14TH FLOOR  
 FOURTEENTH WALL ON 15TH FLOOR  
 FIFTEENTH WALL ON 16TH FLOOR  
 SIXTEENTH WALL ON 17TH FLOOR  
 SEVENTEENTH WALL ON 18TH FLOOR  
 EIGHTEENTH WALL ON 19TH FLOOR  
 NINETEENTH WALL ON 20TH FLOOR  
 TWENTIETH WALL ON 21ST FLOOR  
 TWENTY-FIRST WALL ON 22ND FLOOR  
 TWENTY-SECOND WALL ON 23RD FLOOR  
 TWENTY-THIRD WALL ON 24TH FLOOR  
 TWENTY-FOURTH WALL ON 25TH FLOOR  
 TWENTY-FIFTH WALL ON 26TH FLOOR  
 TWENTY-SIXTH WALL ON 27TH FLOOR  
 TWENTY-SEVENTH WALL ON 28TH FLOOR  
 TWENTY-EIGHTH WALL ON 29TH FLOOR  
 TWENTY-NINTH WALL ON 30TH FLOOR  
 THIRTIETH WALL ON 31ST FLOOR  
 THIRTY-FIRST WALL ON 32ND FLOOR  
 THIRTY-SECOND WALL ON 33RD FLOOR  
 THIRTY-THIRD WALL ON 34TH FLOOR  
 THIRTY-FOURTH WALL ON 35TH FLOOR  
 THIRTY-FIFTH WALL ON 36TH FLOOR  
 THIRTY-SIXTH WALL ON 37TH FLOOR  
 THIRTY-SEVENTH WALL ON 38TH FLOOR  
 THIRTY-EIGHTH WALL ON 39TH FLOOR  
 THIRTY-NINTH WALL ON 40TH FLOOR  
 FORTIETH WALL ON 41ST FLOOR  
 FORTY-FIRST WALL ON 42ND FLOOR  
 FORTY-SECOND WALL ON 43RD FLOOR  
 FORTY-THIRD WALL ON 44TH FLOOR  
 FORTY-FOURTH WALL ON 45TH FLOOR  
 FORTY-FIFTH WALL ON 46TH FLOOR  
 FORTY-SIXTH WALL ON 47TH FLOOR  
 FORTY-SEVENTH WALL ON 48TH FLOOR  
 FORTY-EIGHTH WALL ON 49TH FLOOR  
 FORTY-NINTH WALL ON 50TH FLOOR  
 FIFTIETH WALL ON 51ST FLOOR  
 FIFTY-FIRST WALL ON 52ND FLOOR  
 FIFTY-SECOND WALL ON 53RD FLOOR  
 FIFTY-THIRD WALL ON 54TH FLOOR  
 FIFTY-FOURTH WALL ON 55TH FLOOR  
 FIFTY-FIFTH WALL ON 56TH FLOOR  
 FIFTY-SIXTH WALL ON 57TH FLOOR  
 FIFTY-SEVENTH WALL ON 58TH FLOOR  
 FIFTY-EIGHTH WALL ON 59TH FLOOR  
 FIFTY-NINTH WALL ON 60TH FLOOR  
 SIXTIETH WALL ON 61ST FLOOR  
 SIXTY-FIRST WALL ON 62ND FLOOR  
 SIXTY-SECOND WALL ON 63RD FLOOR  
 SIXTY-THIRD WALL ON 64TH FLOOR  
 SIXTY-FOURTH WALL ON 65TH FLOOR  
 SIXTY-FIFTH WALL ON 66TH FLOOR  
 SIXTY-SIXTH WALL ON 67TH FLOOR  
 SIXTY-SEVENTH WALL ON 68TH FLOOR  
 SIXTY-EIGHTH WALL ON 69TH FLOOR  
 SIXTY-NINTH WALL ON 70TH FLOOR  
 SEVENTIETH WALL ON 71ST FLOOR  
 SEVENTY-FIRST WALL ON 72ND FLOOR  
 SEVENTY-SECOND WALL ON 73RD FLOOR  
 SEVENTY-THIRD WALL ON 74TH FLOOR  
 SEVENTY-FOURTH WALL ON 75TH FLOOR  
 SEVENTY-FIFTH WALL ON 76TH FLOOR  
 SEVENTY-SIXTH WALL ON 77TH FLOOR  
 SEVENTY-SEVENTH WALL ON 78TH FLOOR  
 SEVENTY-EIGHTH WALL ON 79TH FLOOR  
 SEVENTY-NINTH WALL ON 80TH FLOOR  
 EIGHTIETH WALL ON 81ST FLOOR  
 EIGHTY-FIRST WALL ON 82ND FLOOR  
 EIGHTY-SECOND WALL ON 83RD FLOOR  
 EIGHTY-THIRD WALL ON 84TH FLOOR  
 EIGHTY-FOURTH WALL ON 85TH FLOOR  
 EIGHTY-FIFTH WALL ON 86TH FLOOR  
 EIGHTY-SIXTH WALL ON 87TH FLOOR  
 EIGHTY-SEVENTH WALL ON 88TH FLOOR  
 EIGHTY-EIGHTH WALL ON 89TH FLOOR  
 EIGHTY-NINTH WALL ON 90TH FLOOR  
 NINETYIETH WALL ON 91ST FLOOR  
 NINETY-FIRST WALL ON 92ND FLOOR  
 NINETY-SECOND WALL ON 93RD FLOOR  
 NINETY-THIRD WALL ON 94TH FLOOR  
 NINETY-FOURTH WALL ON 95TH FLOOR  
 NINETY-FIFTH WALL ON 96TH FLOOR  
 NINETY-SIXTH WALL ON 97TH FLOOR  
 NINETY-SEVENTH WALL ON 98TH FLOOR  
 NINETY-EIGHTH WALL ON 99TH FLOOR  
 HUNDRETH WALL ON 100TH FLOOR

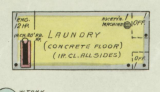
Scale of Feet.  
0 50 100 150

Map of Corbin, Kentucky, showing streets, buildings, and other features. The map is color-coded by block numbers 1 through 8. A north arrow is present in the upper left quadrant.



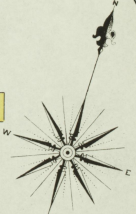
APRIL 1908  
CORBIN  
KY.

PEARL WHITE LAUNDRY CO. INC.  
STEAM LAUNDRY  
Main Offices, Washers, Dryers,  
Power & Sizing Steam - Fuel, Coal -  
By Truck



NO EXPOSURE

NO EXPOSURE



Scale of Feet.  
0 50 100 150

NO EXPOSURE

5

Map Division  
JUL 1905  
City of Congress

R. A. EARLY,  
SAW & PLANING MILL

POWER - STEAM - NO HEAT - NO LIGHT  
FOLLOWING WATER - SUPPLYING OWNERS  
WITH BOILER - WATER PUMPED TO ROLLER  
BY HAND FORCE POWER

Map Division  
JUL 1905  
City of Congress

Centre

LYNN CAMP CREEK

FR. BRIDGE



APRIL 1908  
CORBIN  
KY.

3

2



CENTRE

GORDON

MONROE

FIRST

4 SECOND

EARLEY

POPLAR

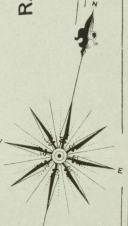
KENTUCKY AV.

MAIN

ST. OF FLORENCE

RAILROAD

Scale of Feet.



Map Edition  
11 JUL 1935  
Library of Congress

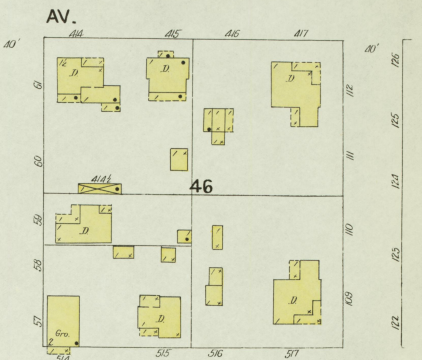
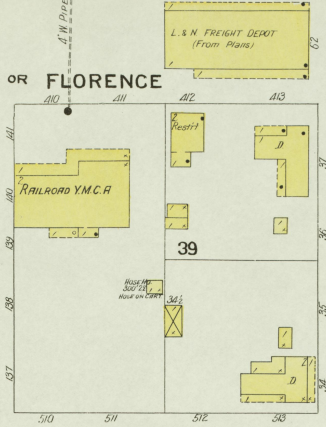
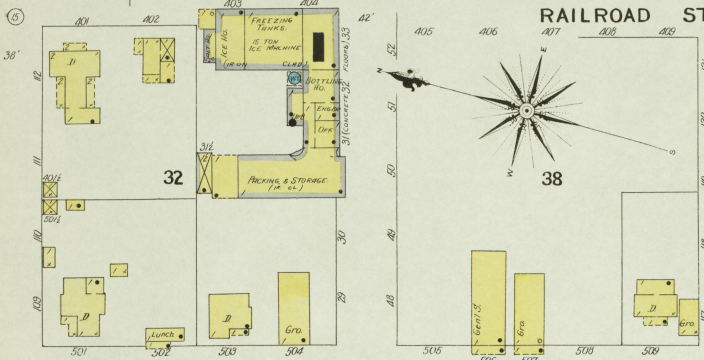


**CORBIN ICE & CARBONATING CO. INC.**  
**ICE PLANT & BOTTLING WORKS**  
 NIGHT WATCHMAN NO CLOCK POWER, STERN  
 HEAT, STOKES IN BOTTLING HO. & OFF.  
 LIGHTS, ELEC. FUEL, COAL  
 FORCE PUMPS CHECKS AS REQUIRED PER MINUTE  
 100' 18 HOSE - 100' 2" HOSE.

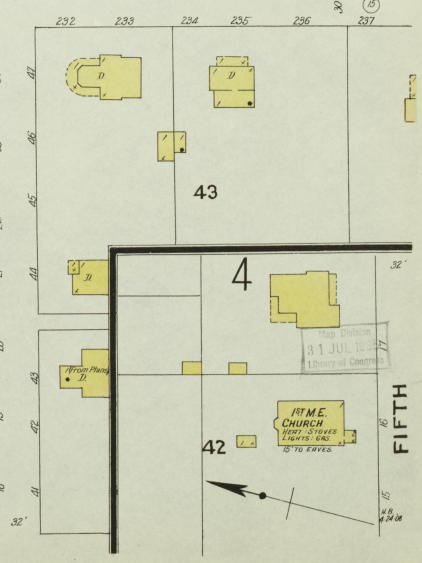
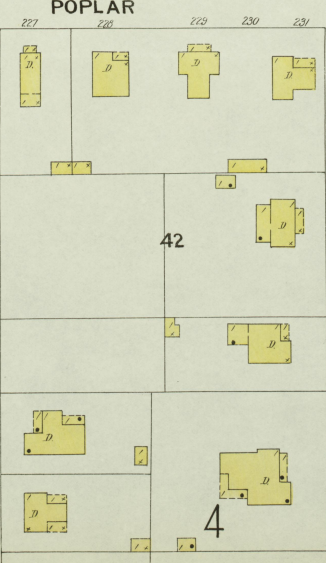
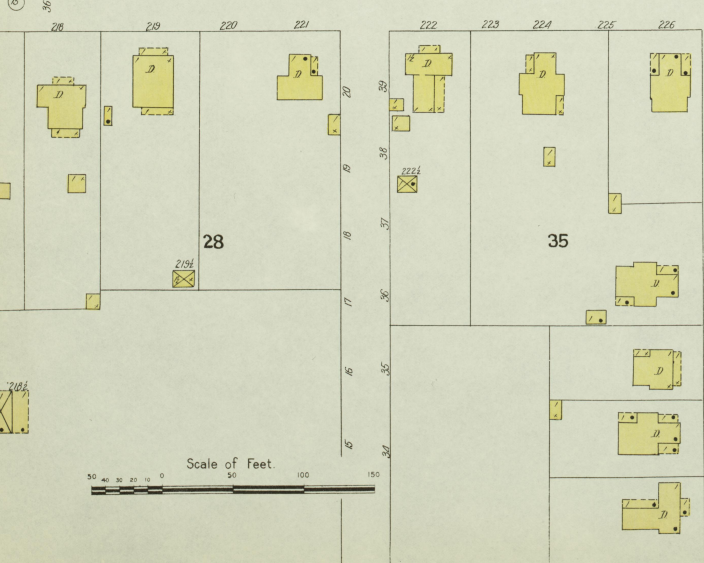
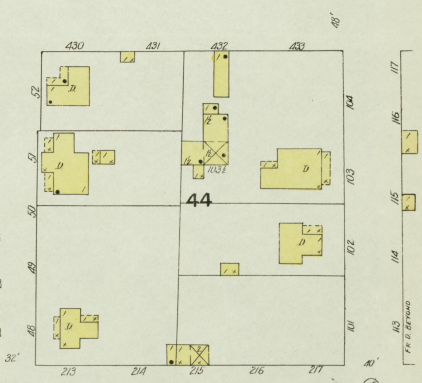
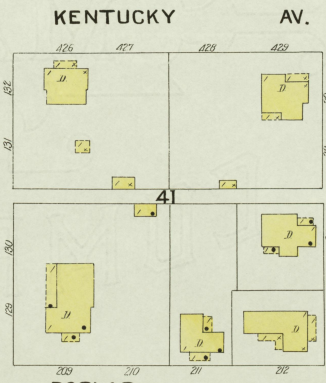
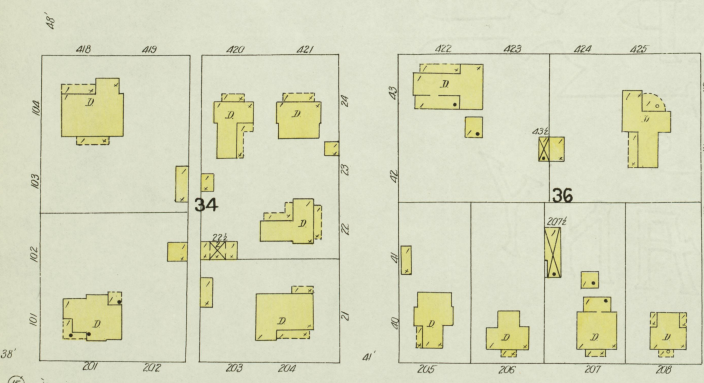
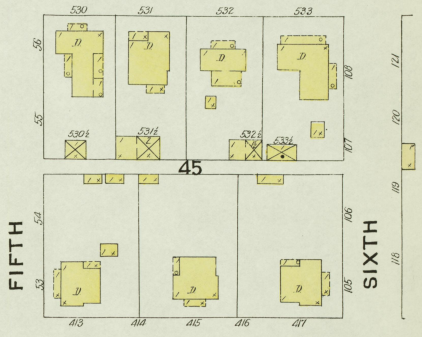
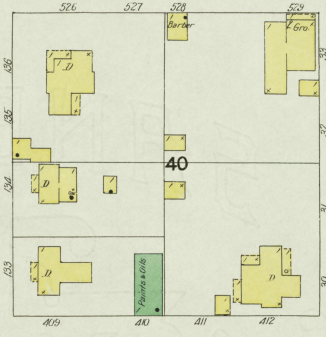
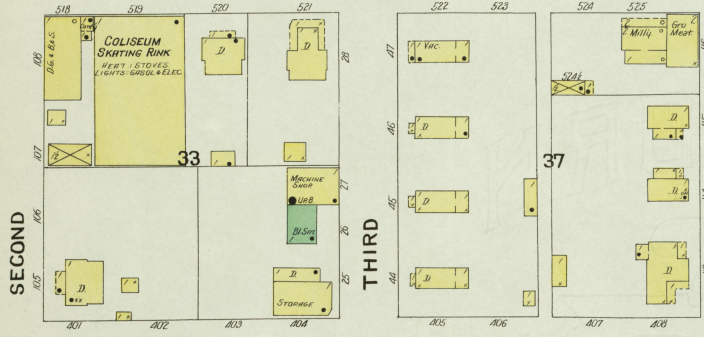
APRIL 1908  
**CORBIN**  
 KY.

4

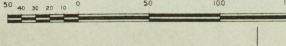
**RAILROAD ST. OR FLORENCE**



**MAIN**



Scale of Feet

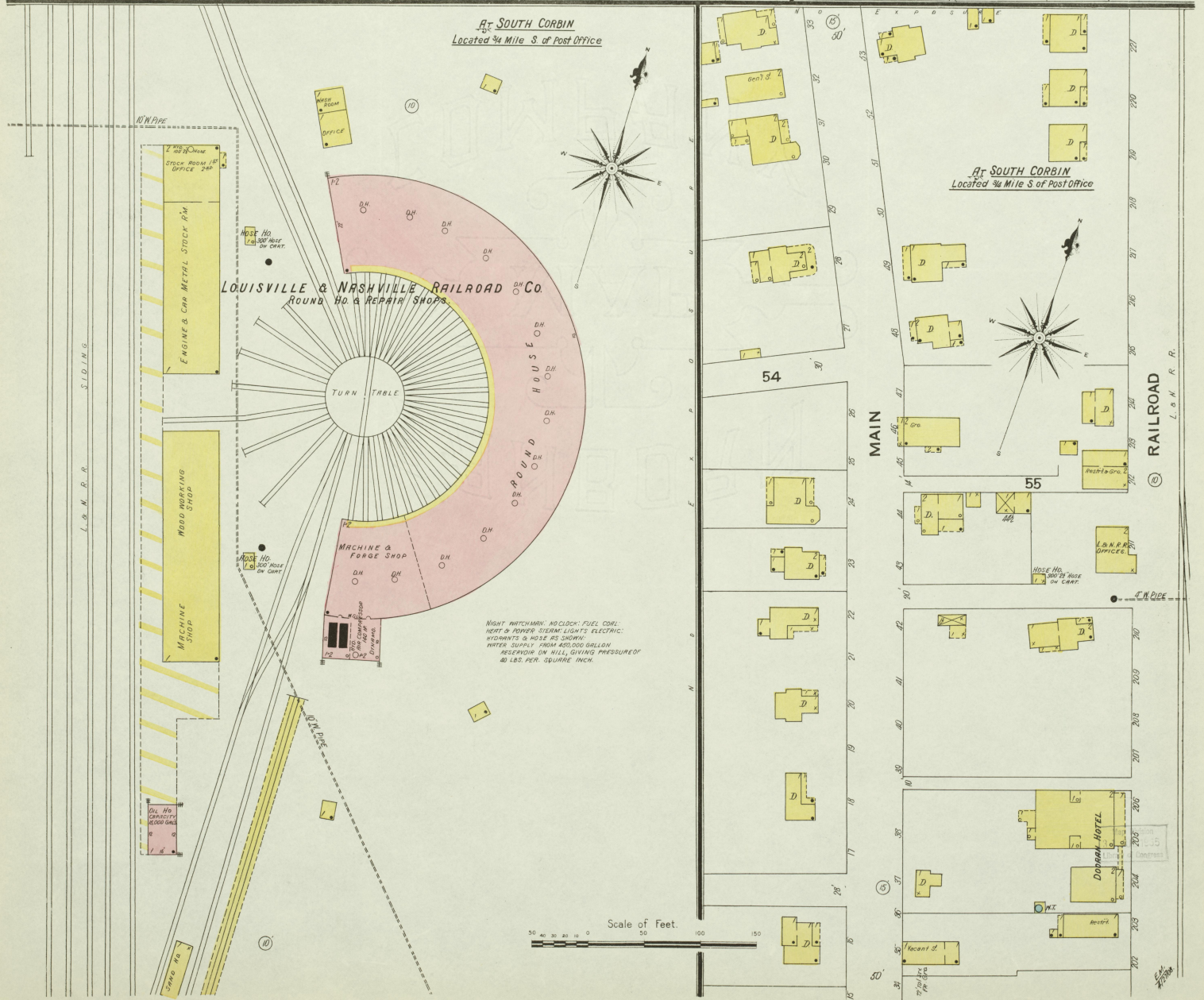
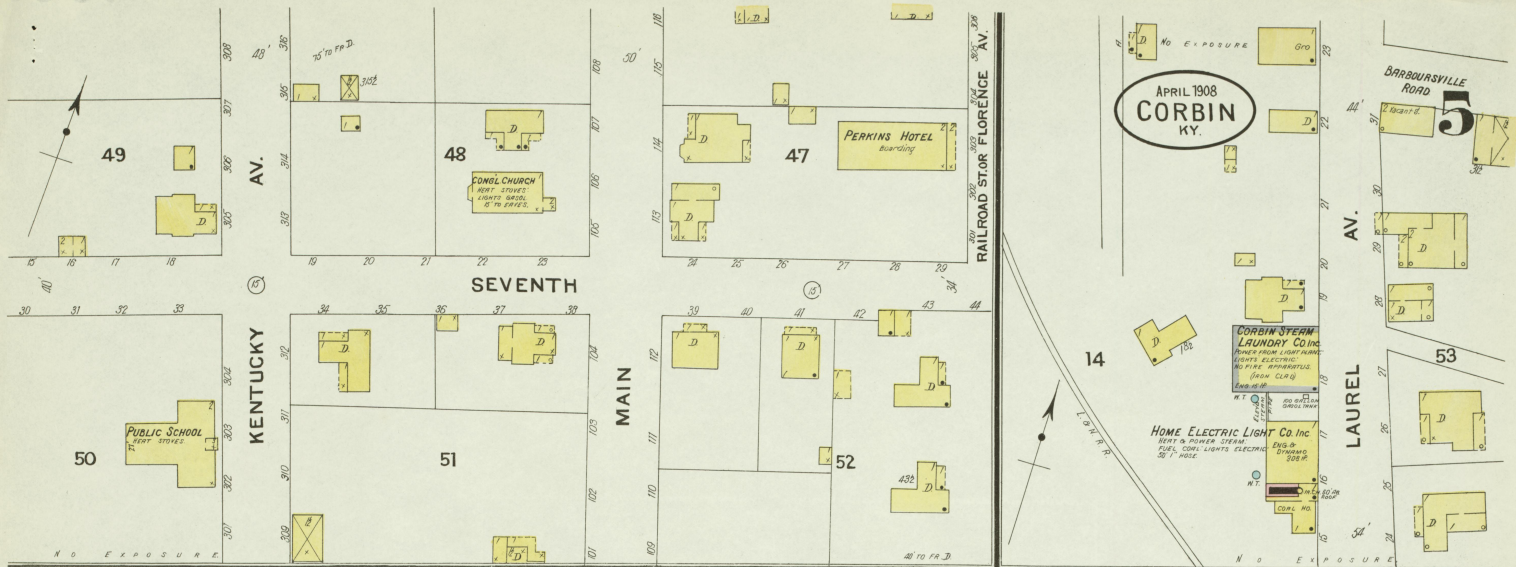


THE CHURCH  
 31 JUL 1908  
 1st Annual Conference

W.M.E. CHURCH  
 FIRST FLOOR  
 LIGHTS, GAS,  
 8 TO 10 P.M.

FIFTH





WATER SUPPLY FROM 40000 GALLON RESERVOIR ON HILL, GIVING PRESSURE OF 40 LBS. PER SQUARE INCH.