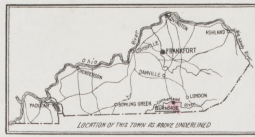


KEY

- STABLE (C) CONCRETE BLDG.
- BUILDING COLORED YELLOW FRAM.
- BROWN BRICK
- RED STONE
- GREEN CONCRETE
- FIRE STATION AS SHOWN IN KEY MAP
- ARBITRARY STREET NUMBERS AND ACTUAL CONSECUTIVE STREET NOS. ARE ARBITRARY

Scale 560 feet to an inch
(Approx.)

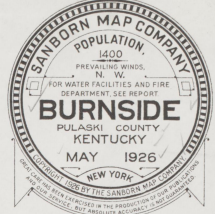


WATER FACILITIES

Owned by the Burns Corporation, gravity or direct pressure system, source of supply from South Fork River through a siphon by Union Steam Pumping Co., McKeen's Pump Works is a capacity 1000 gals per hour 8 ft. Pulling Simplex steam force pump, 1 ft. of capacity, 1000 gals per hour to 2000 ft. reservoir on hill, 120 gals lowest part of town to 500 ft. above highest part of town, 1000 gals per hour to 2500 ft. per inch. These force pumps are 12 ft. in capacity, 1000 gals per hour, located above high water mark for emergency in case of flood when flow up at damaged shafts at all times, storage daily consumption 8000 gals, 5 miles of 4 in. mains, number of double hydrants 30. System installed in year 1896.

FIRE DEPT. :-

Volunteer 'chief' fully paid & 10 volunteers paid on call. 2 hose carts, 8 1/2 hose, 3000 sq. ft. hose & 600 x 1000 ft. hose respectively. I provide hose cart with 100 ft. hose available in emergency, fire alarm by factory whistles & telephone connections. Public lighting elec. streets not paved, grades heavy. No established fire limits. No system of house numbering.



JUN 26 26

INDEX

STREETS	HOUSE	STREETS	HOUSE	STREETS	HOUSE
Antioch Alley	15-33 1	Pulaski Ave.	P	4, 4 & 5	3
Ave.	101-131 6	Railroad Ave.	B	6	6
Central Ave.	C	Second	S	101-112 2	2
Cumberland	2-6 2	Seventh	7	201-207 2	2
Fifth	F	South	8	2-6 2	2
First	4-6 2	Summit Ave.	2-6 2	4	4
Fourth	34-47 6	Third	T	4	4
Grandview Ave.	10-49 6	Valley	V	301-306 4	4
" " "	101-120 1	Walace Ave.	W	307-308 3	3
" " "	201-219 2		1-6 6		
Highland Ave.	301-306 6				
" " "	307-317 2				
Kinsley Ave.	15-23 1				
" " "	24-34 1				
Main	101-140 5				
" " "	201-268 4				
" " "	301-348 3				
" " "	451-483 2				
" " "	W. of Cumberland 2				
" " "	near Bennett Hardware & Mfg. Co., Plans 2				
New	N				

NOTE.—House Numbers given are arbitrary.



Scale of Feet.

Copyright 1925 by the Sandborn Map Co.

2
Cumberland River
Junction of Cumberland River
South Fork River

SOUTH
FORK
RIVER

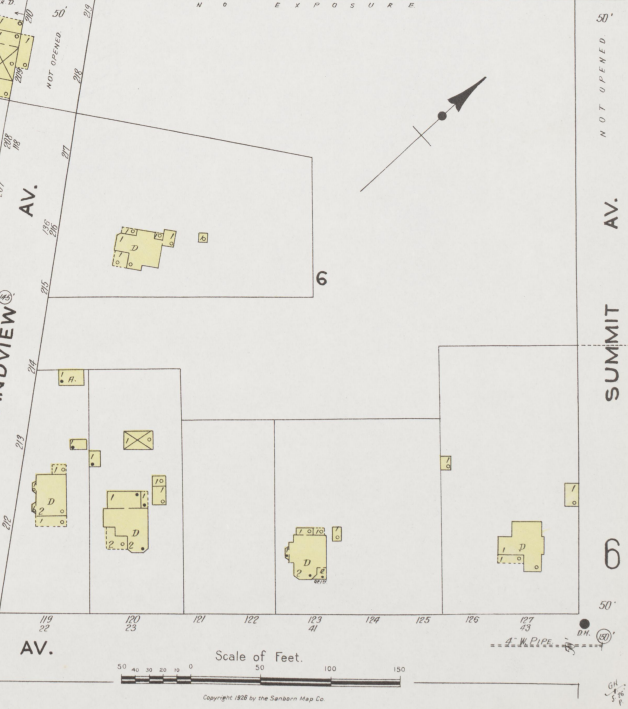
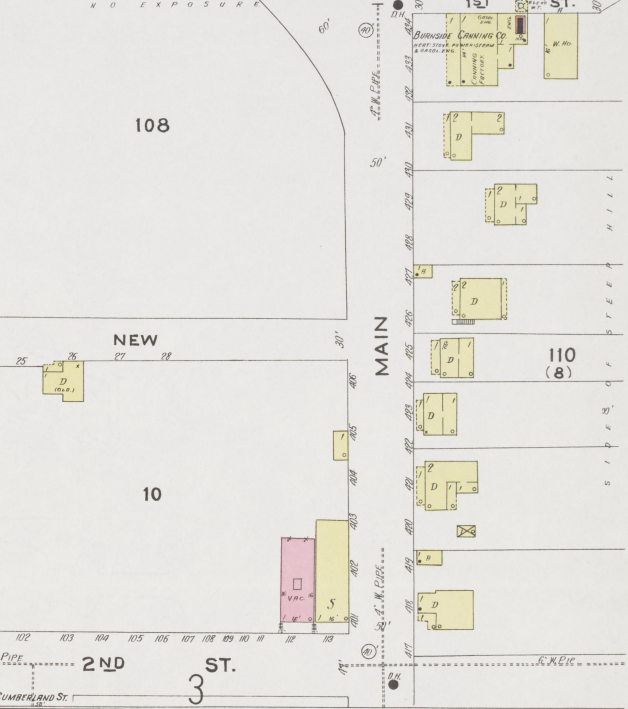
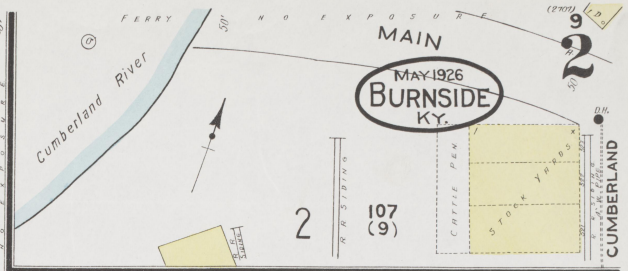
NO EXPOSURE

8

HIGHLAND AV.

4

6



Scale of Feet
0 50 100 150
Copyright 1926 by the Sanborn Map Co.

MAY 1926
BURNSIDE
KY.



SOUTH FORK RIVER

CUMBERLAND

MAIN

HILL SIDE

VELEP

Scale of Feet.

Copyright 1926 by the Sanborn Map Co.

NO BELL OR WATCHMAN WHO CRIES
 FIRE SHOWN NEAR STAIR OR DISCHARGING
 HORN & RINGING HO. LIGHTS ELEC. FUEL
 COIL & BELL. FIRE SHOULD BE SHOWN BY
 CITY WATER FIRE PALS ABLES ON ROAD &
 CROSS BRIDGES ON CHANGES LEFT OPEN
 MOST OF TIME. REVERSE STOCK OF LOGS
 TO SHOW REVERSE STOCK OF FUELERS TO
 MILLION FT. CHAIN EXTRA 12 INCH COYS
 THROUGH BULLFINCH.

NO BELL OR WATCHMAN. STEAM KEPT IN BURN
 AT ALL TIMES FUEL COIL LIGHTS ELEC. NO SOUND
 SUPPLY COIL FUEL COIL. NO BELL OR WATCHMAN
 FOR HOUR & PULLING SAMPLES STEAM TO 200 PSI
 CHECK SOUND BELL AND HOUR COILS. WORKING FUEL
 PRESSURE FROM PUMPING SYSTEM BARRIS FROM
 20 TO 40 PSI. BARRIS FOR HOUR COILS.
 IN BARRIS OF SYSTEM & USED ONLY
 FOR EMERGENCY

BURNSIDE WATER CO. INC.

MITCHELL MFG. CO.
WOOD TURNING MILL

GARAGE
C.H. PL.

CITY HALL

PULASKI AVE.

MAY 1926
BURNSIDE
KY.



4

2

6

4

14 SEVEN GABLES HOTEL

POST OFFICE

15 OPEN COAL BIN

CUMBERLAND GROCERY CO.
FIRE EXTINGUISHERS

MAIN

13

PRESBYTERIAN CHURCH

16

5

VALLEY

17

4

17

DRAKE BROS. LUMBER CO.
COOPER, PORTER & LUMBER
CLEAN POSTS & LUMBER
Saw Dust Pile
Saw Mill
Saw Dust

FORMERLY F.O. CEDAR WORKS LTD (INC)
NOW ABANDONED

Scale of Feet
0 50 100 150

Copyright 1926 by the Searns Map Co.

South Fork River

South Fork River

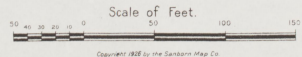
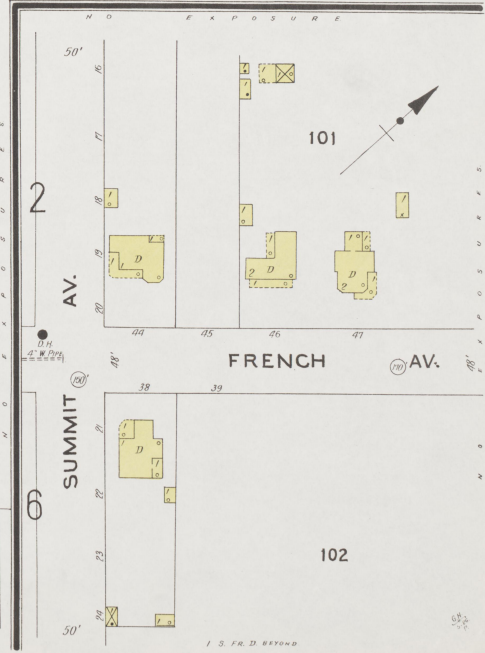
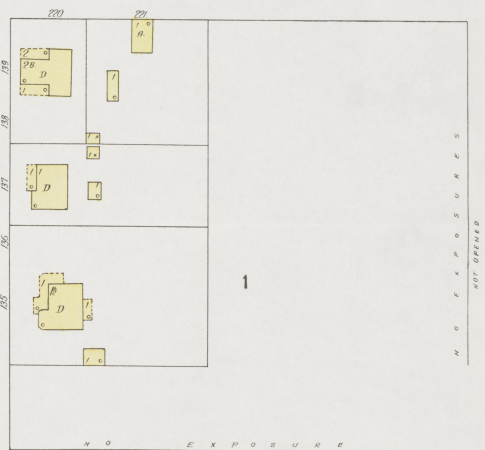
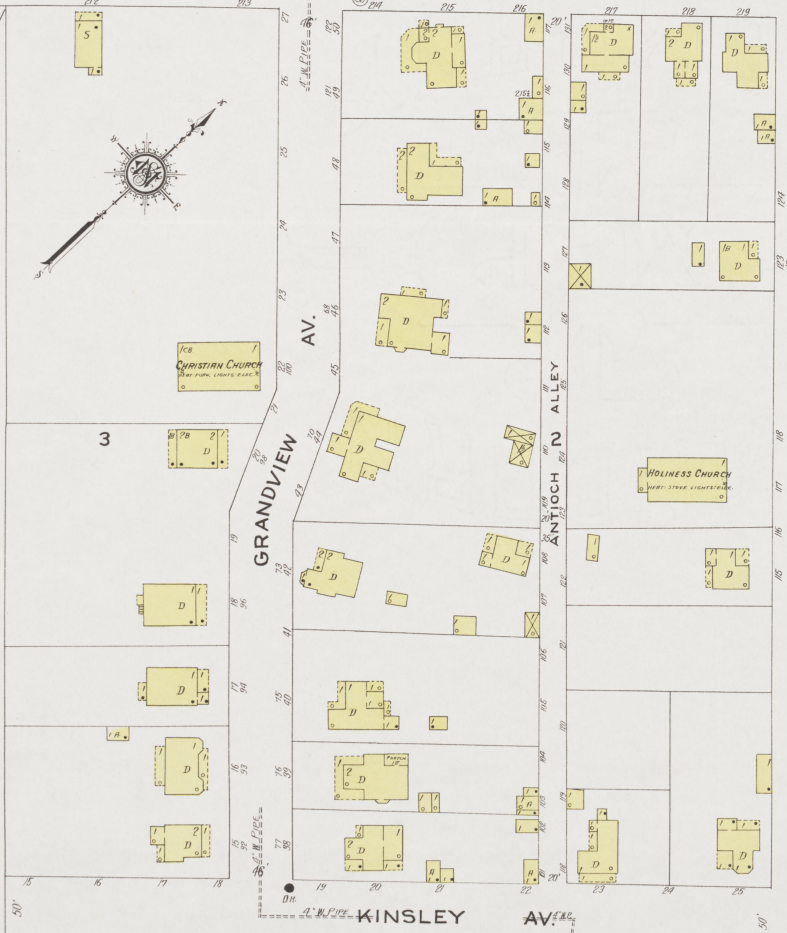
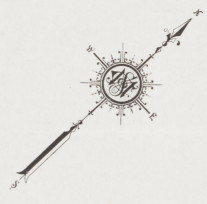
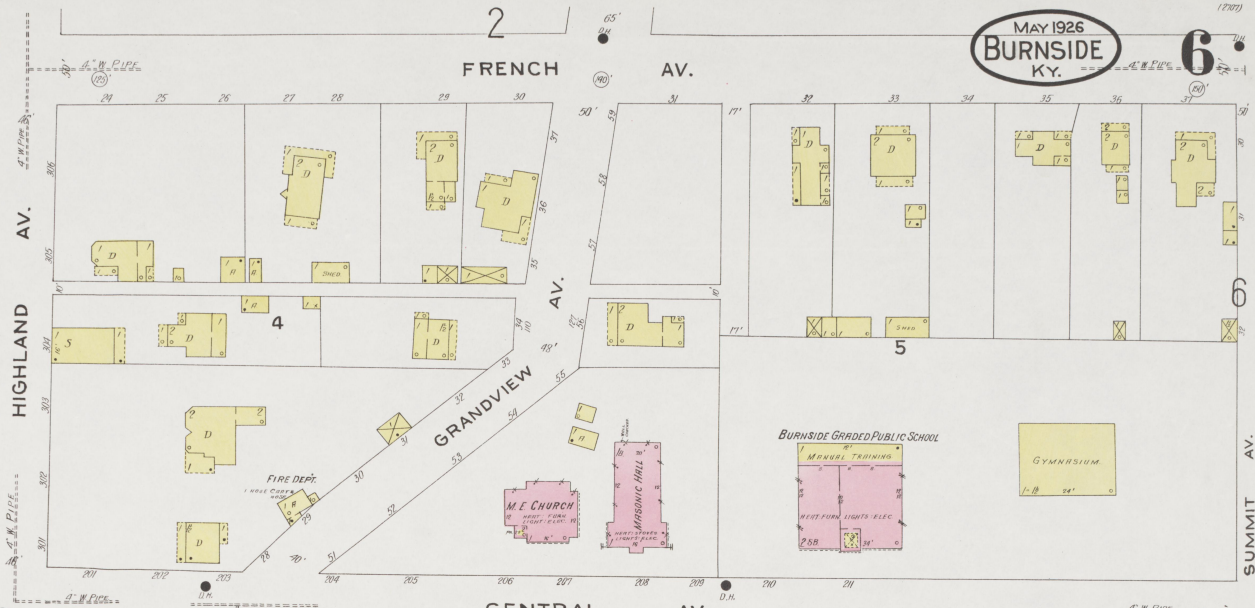
MAY 1926
BURNSIDE
KY.



Scale of Feet.

Copyright 1926 by the Sanborn Map Co.

RAILROAD AV.
H.O.T.
L.N.M. TRAIL
S. R.Y.



Copyright 1926 by the Sanborn Map Co.

I. S. F. D. BEYOND