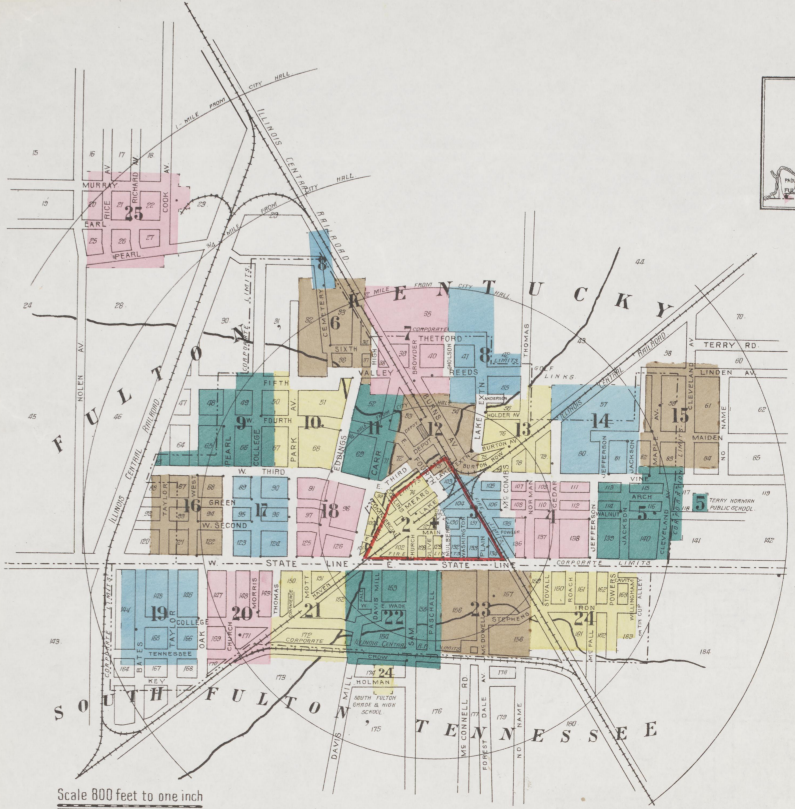
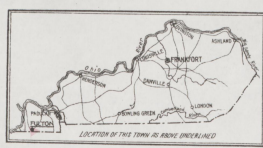


FULTON South FULTON Tennessee Sanborn Map Company April 1925 Copyright 1925 by the Sanborn Map Co. AUG 28 1925



Scale 800 feet to one inch



KEY table with symbols for various features like buildings, streets, and public works.

Population 5000 Prevailing Winds S.W.

WATER FACILITIES: Direct pressure system. Supplied from 3 wells... FIRE DEPT.: One Station

One Chief fully paid One Assistant Chief... alternate house numbers are actual & are those upon buildings...

INDEX

INDEX table listing streets, lot numbers, and specific locations with their corresponding sheet numbers.

SOUTH FULTON, TENN.

Second index table listing streets and locations in South Fulton, Tennessee.

* Indicates only one side of Street shown.



BROWDER MILLING CO.
FLOUR MILL & ELEVATOR
MOTOR RISK

E. STATE LINE
22

Scale of Feet
0 50 100 150

Copyright 1925 by the Southern Map Co.
PASWELL ST.



Scale of Feet.

Copyright 1925 by the Searborn Map Co.

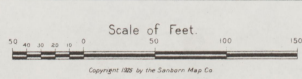
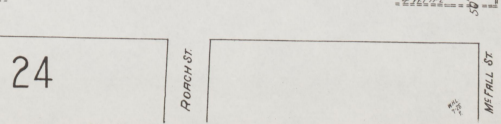
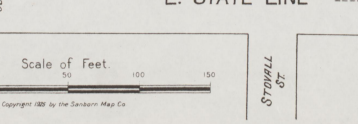
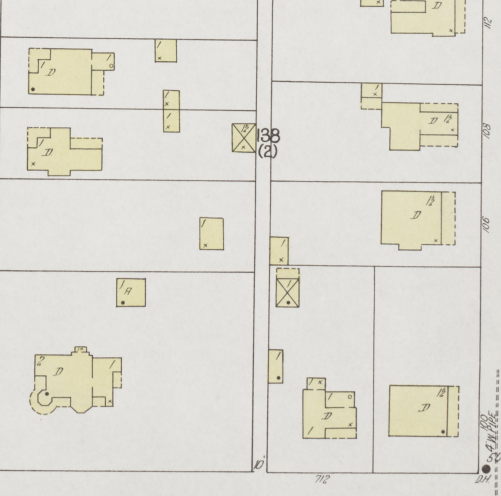
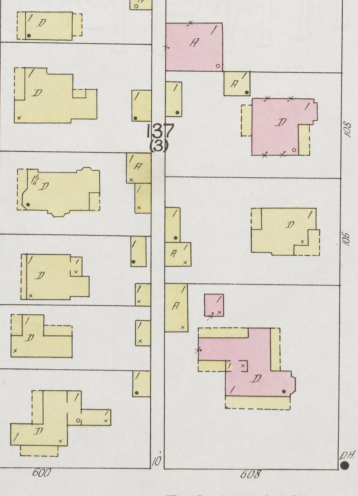
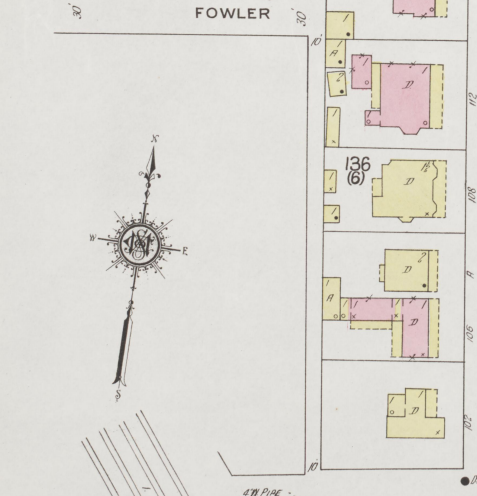
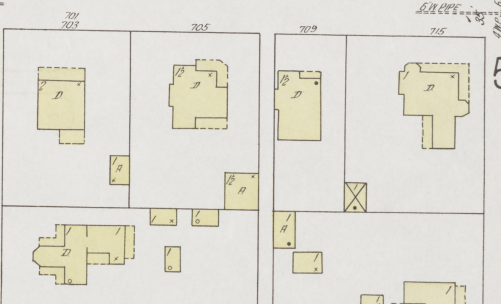
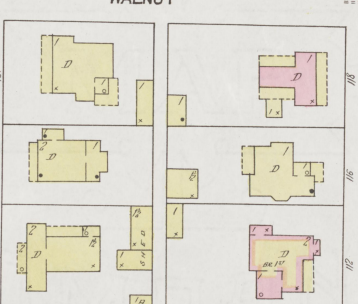
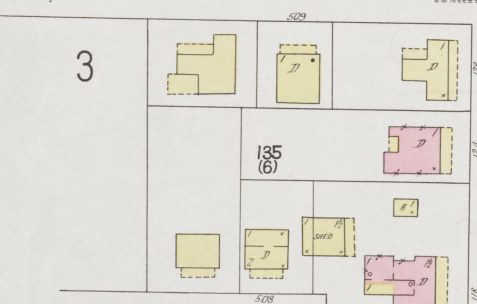
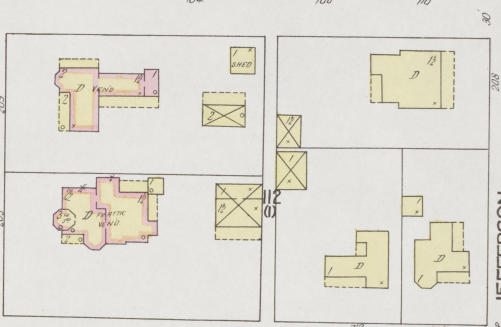
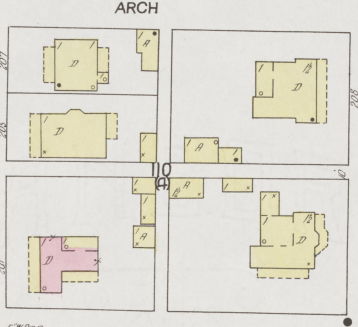
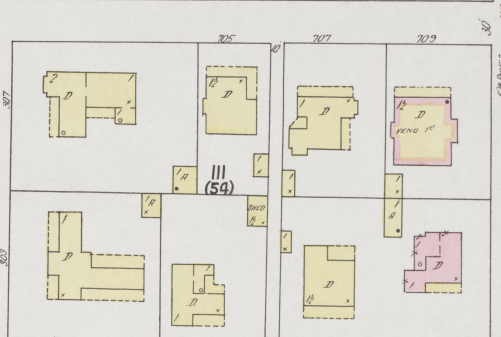
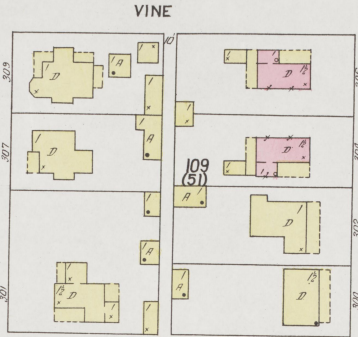
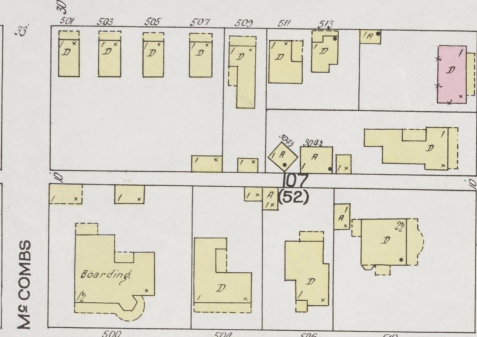
APR 1925
FULTON
KY.

4

4

13

14



STOVALL ST.

ROACH ST.

MF FALL ST.

JEFFERSON

APR. 1925.
FULTON
KY.

14

82
(2A)

83
(1A)



JEFFERSON

JACKSON

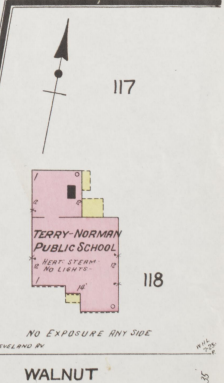
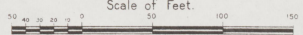
CLEVELAND

WALNUT

VINE

ARCH

Scale of Feet.



FAIRVIEW CEMETERY

CEMETERY

EDDINGS

CEMETERY

VALLEY

PARK AV.

5TH ST.

6TH ST.

ST.

HIGH

32
(5)

33
(3A)

34
(4A)

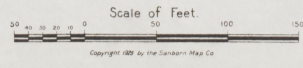
36
(5)

37
(2A)

52
(16)



W. L. HERRING
 GUS FIELDS TOBACCO CO
 LESSEE
 TOBACCO REHANDLING



Copyright 1925 by the Sanborn Map Co



6
6th ST.

HIGH

VALLEY

DARK TOBACCO GROWERS CO-OPERATIVE BASK
TOBACCO REHABILITATING & MARKING BLDG.
NO. 1000 BURNING OF TOBACCO, REST, CHURCH

52
(16)

CARR

53

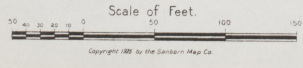
Creek

BURNS
AV.

54
(2A)

ASTRID
ST. BARNABY

12



38
(2A)

39
(5A)

40
(4A)

THETFORD

BROWDER

GHOLSON

REEDS

8

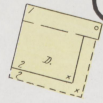


35



APR. 1925
FULTON
K. Y.

25



PEARL

CEMETERY

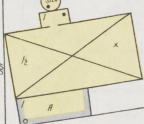
33

6

42

32

ST. EXT'N.



GHOLSON

THETFORD

7

REEDS

LAKE

(1A)

55
(2A)

(2A)

PETTY CT.

54

ANDERSON

THOMAS

13

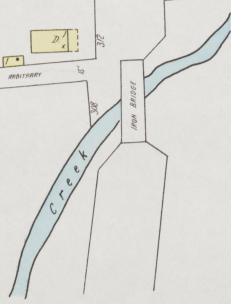
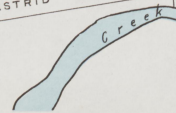
13

(6A)

12

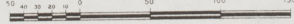
ASTRID ST.

ASTRID ST.



MILTON PUBLIC SCHOOL
(CORNER)
ASTR. ST. & ANDERSON

Scale of Feet.



Copyright 1925 by the Sanborn Map Co.

APR. 1925.
FULTON
KY.

9

31

9 63

TAYLOR

WEST **9**

30
(15)

3RD ST.

16

5TH ST.

ST.



48
(A)

49
(14)

50
(7)

50'

9

W. 4TH ST.

ST.

10

PEARL

COLLEGE

55
(A)

66
(13)

67
(8)

WEST

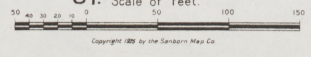
9

16

W. 3RD ST.

ST. Scale of Feet.

17



Copyright 1925 by the Sanborn Map Co.

10

31
(6)

6

6 VALLEY 10

6

APR 1925
FULTON
KY.

5TH ST.

(4)

51

CHURCH
1811-1801
1800-1801

(17)

50
(7)

W. 4TH ST.

AV.

PARK

(3)

68

(18)

67
(8)

EDDINGS



Scale of Feet
0 50 100 150

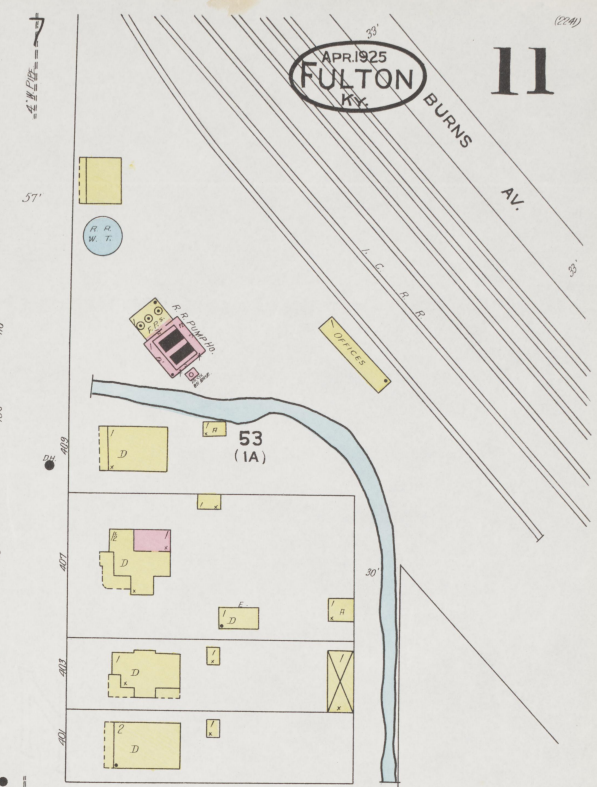
Copyright 1925 by the Sanborn Map Co.

W. 3RD ST.

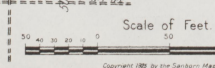
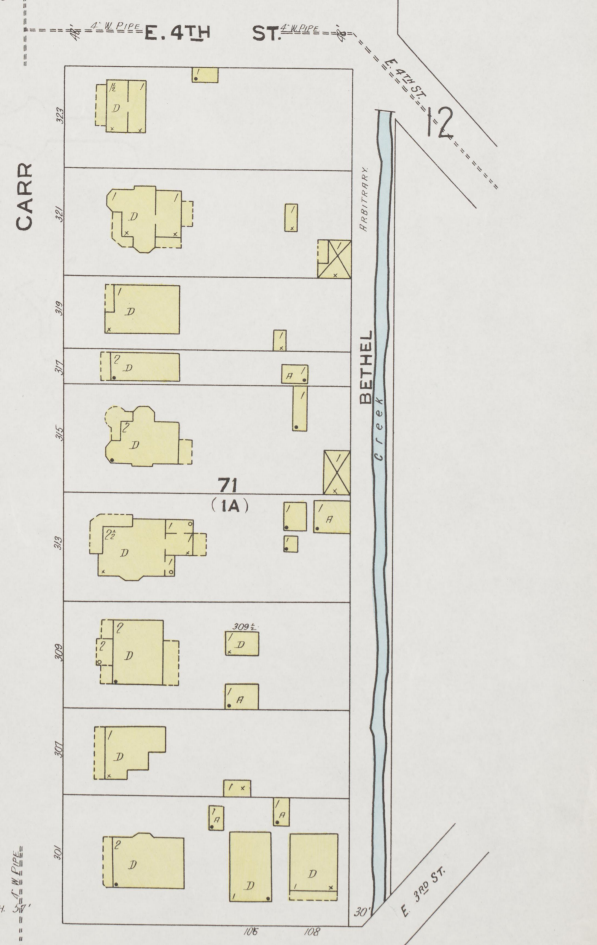
17

18





APR 1925
FULTON
REG.



12

12

APR. 1925
FULTON
KY.



Scale of Feet.
0 50 100 150
Copyright 1925 by the Standard Map Co.

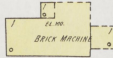
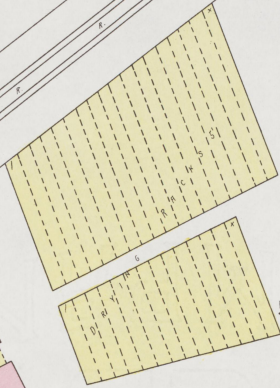


APR. 1925
FULTON
KY.

43
(1A)

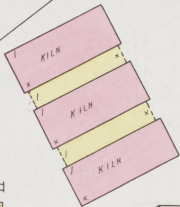


GOLF LINKS



57
(3A)

W. M. HILL & SONS
BRICK YARD
NO HEAT, NO LIGHTS, POWER, ETC.



SIDING

13

15

MAIDEN

CEDAR

JEFFERSON

JACKSON

80
(B)

81
(1A)

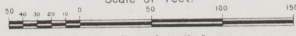
82
(2A)

4

5

VINE

Scale of Feet.



Copyright 1925 by the Sanborn Map Co.

15

58
(5A)

60

APR 1925
FULTON
KY.

15

LINDEN AV.

MAPLE AV.

CLEVELAND AV.

MAIDEN

57
(8A)

59
(4A)

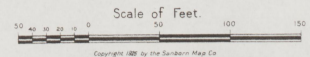
61

82
(2A)

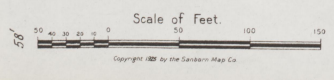
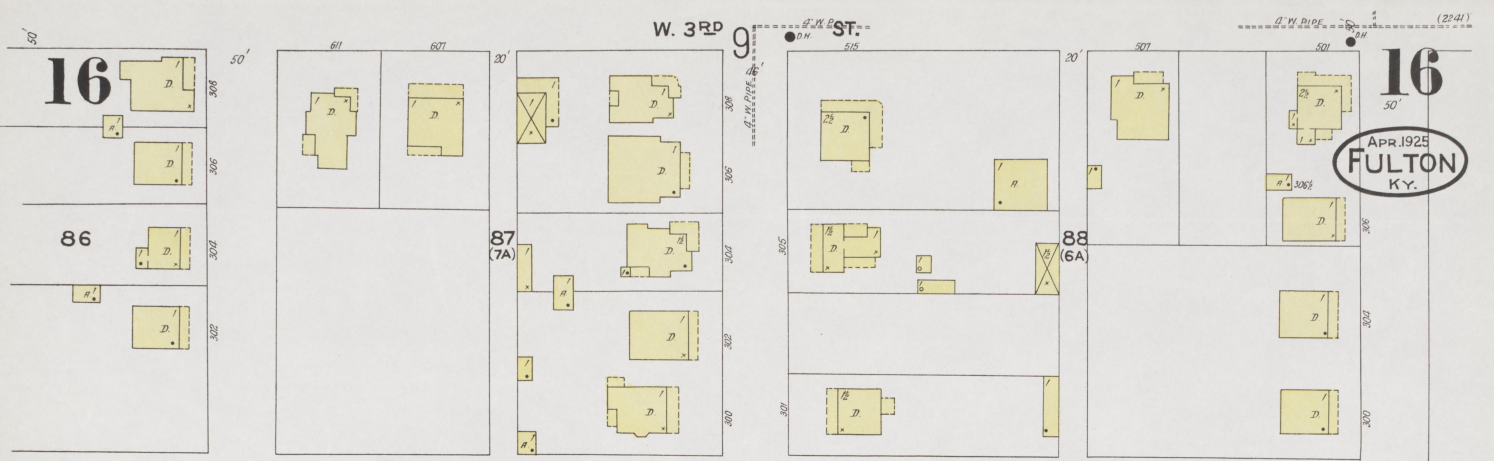
83
(1A)

84

5



Copyright 1925 by the Southern Map Co.



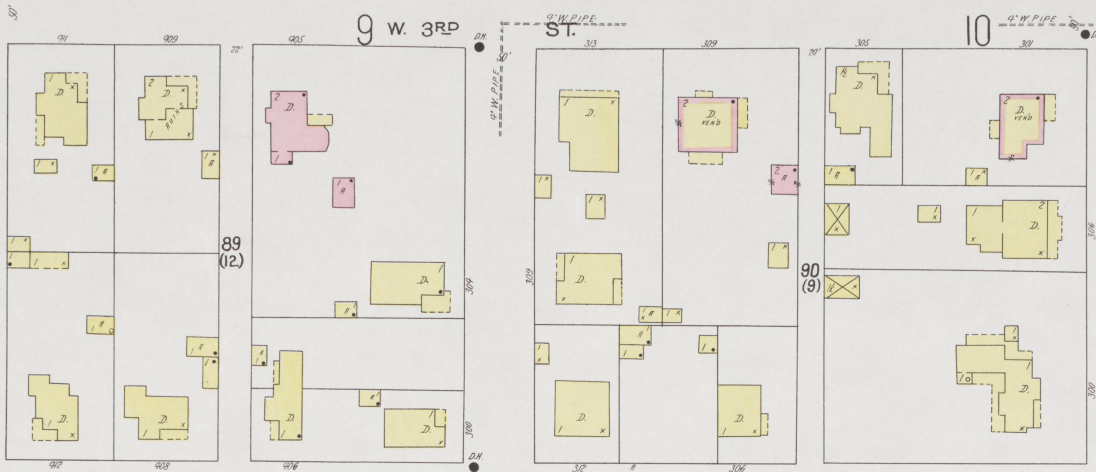
19

20

17

17

APR. 1925.
FULTON
KY.



GREEN

16

18



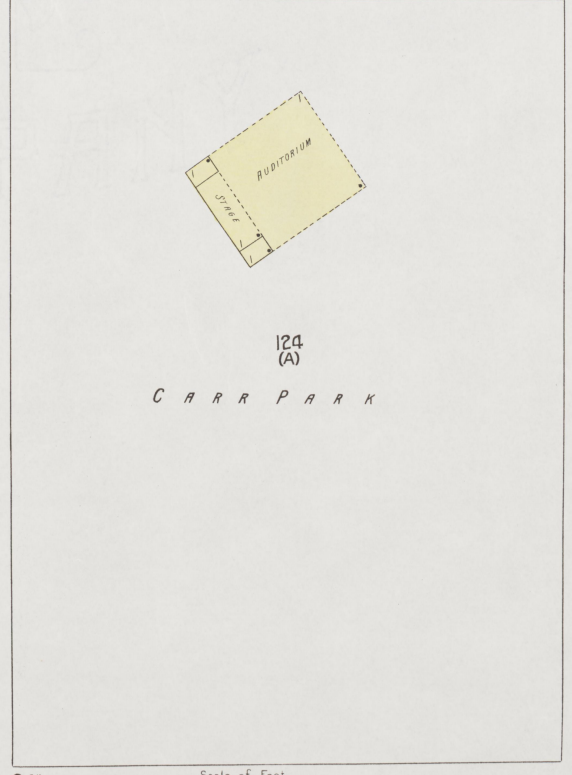
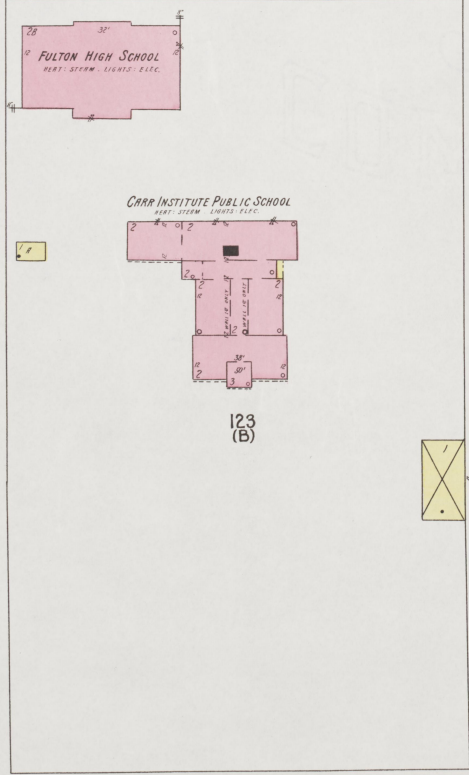
W. 2ND ST.

ST.

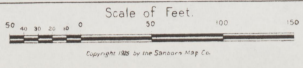
PARK

PEARL

COLLEGE



124 (A)
CARR PARK



W. STATE LINE

21

APR 1925
FULTON
KY.

18

18



GREEN

EDDINGS

CARR

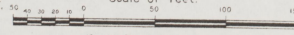
PARK

W. 2ND ST.

E 2ND ST

W. STATE LINE
21

Scale of Feet



Copyright 1925 by the Standard Map Co.

W. 1ST ST.

WORMEN BRIDGE

IRON BRIDGE

LAKE ST.

L.C. R.R.

(204)

2



W. STATE LINE

19

16

19



APR. 1925
FULTON
Ky.
SOUTH FULTON, TENN.

OAK 20

BATES

TAYLOR

COLLEGE

TENNESSEE

144
(2A)

145
(3A)

146
(4A)

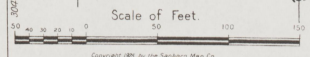
165
(1A)

166
(5A)

164
(8A)

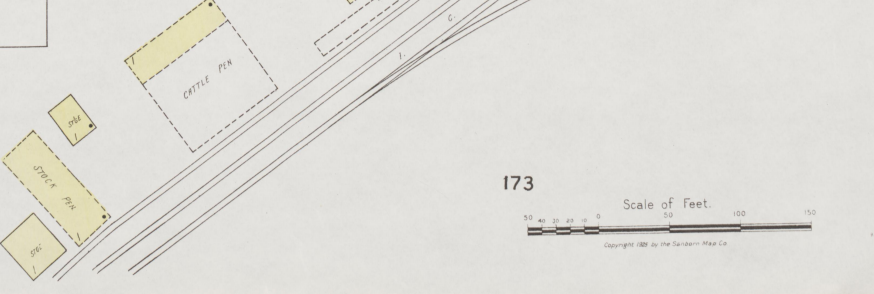
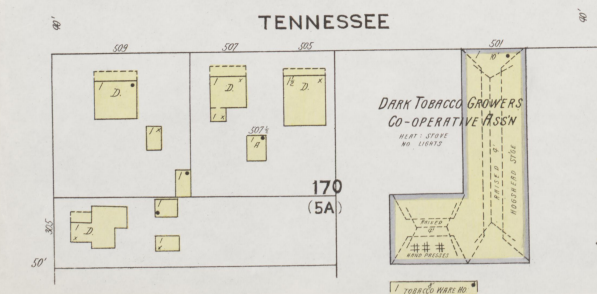
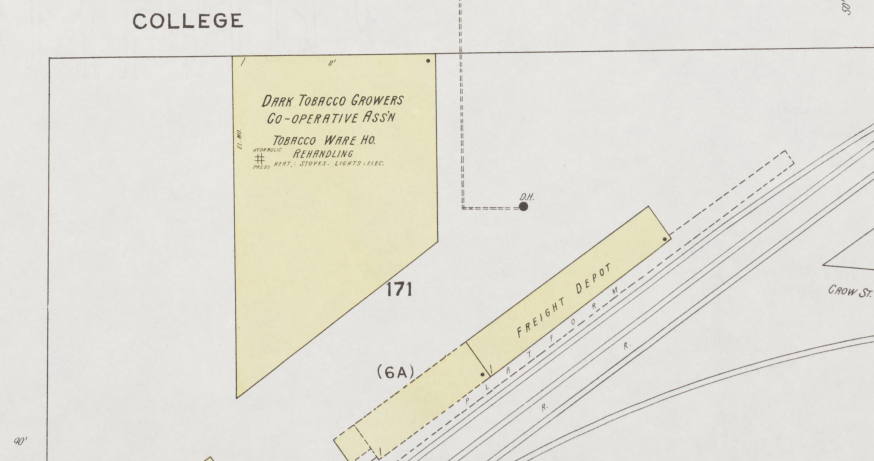
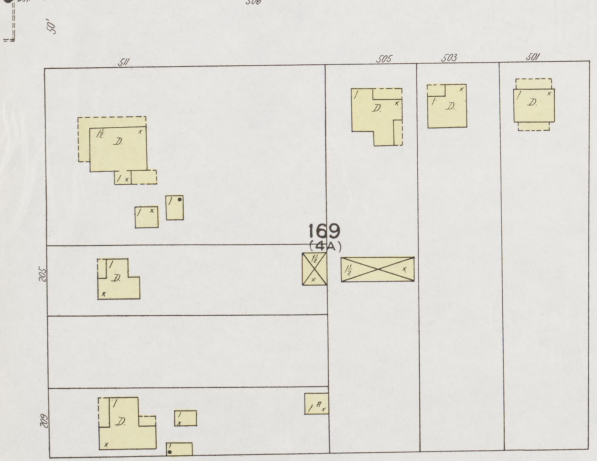
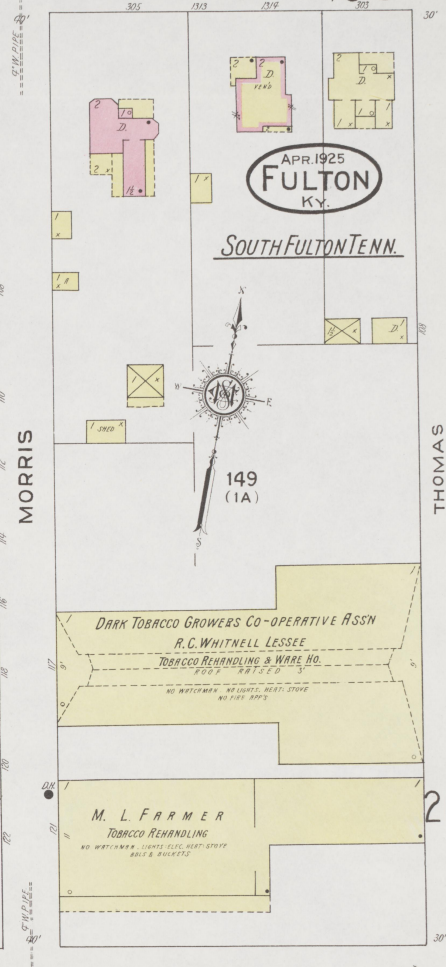
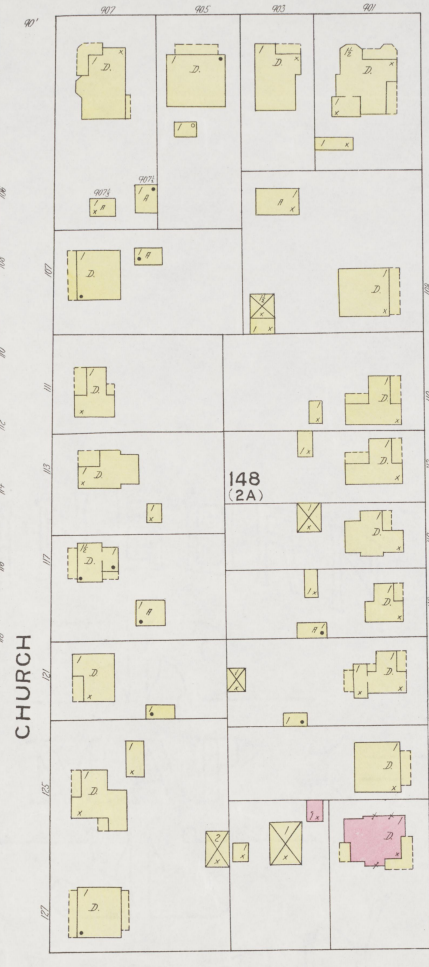
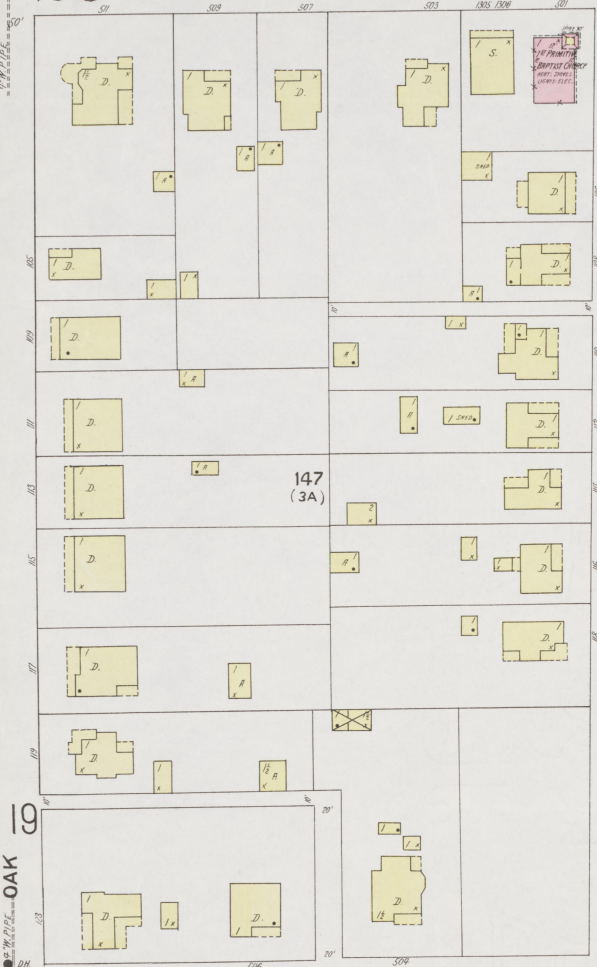
167
(7A)

168
(6A)



Copyright 1925 by the Sanborn Map Co.





APR. 1925
FULTON
KY.

SOUTH FULTON TENN.



DARK TOBACCO GROWERS CO-OPERATIVE ASSN
R. C. WHITNELL LESSEE
TOBACCO REHANDLING & WARE HO.
NO. 1002 - 4875 E.C.D.
NO WATCHMAN - LIGHTS FLASH NIGHT STAFF
SIDE 1511 337

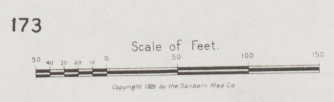
M. L. FARMER
TOBACCO REHANDLING
NO WATCHMAN - LIGHTS FLASH NIGHT STAFF
SIDE 1511 337

DARK TOBACCO GROWERS
CO-OPERATIVE ASSN
TOBACCO WARE HO.
REHANDLING
NO. 1002 - 4875 E.C.D.
NO. 1002 - 4875 E.C.D.

FREIGHT DEPOT

DARK TOBACCO GROWERS
CO-OPERATIVE ASSN
REHANDLING
NO. 1002 - 4875 E.C.D.
NO. 1002 - 4875 E.C.D.

TOBACCO WARE HO.



21

17

PARK AV.

EDWARDS ST.

18

DA STRONG

(22W)

21

W. STATE LINE

APR. 1925
FULTON
KY.

SOUTH FULTON, TENN.

THOMAS

20

THELMA PL.

150
(50)

COMMERCE (THOMAS ALLEY)

MOTT

HAVEN

(IA)

152

22



FIRE WALL
BRITISH CHURCH
(CONCRETE)
18' x 10' x 10'

COLLEGE

IRON & CONCRETE
B.P.I.D.B.E.

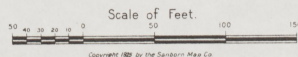
172
(2A)

Creek

CROW

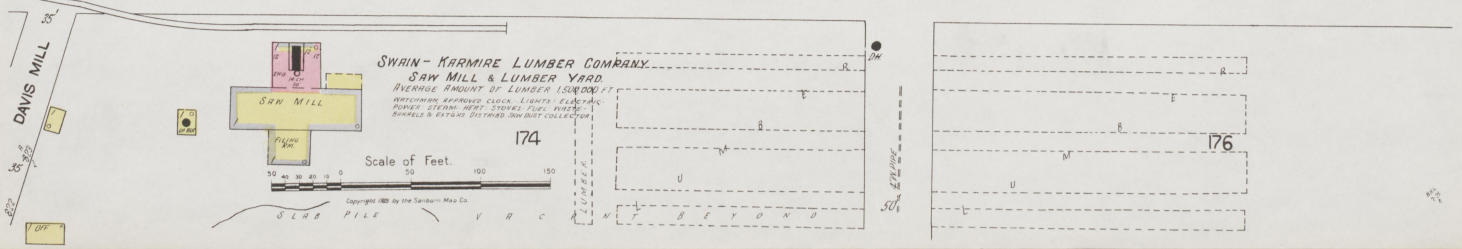
173

DAVIS MILL



Copyright 1925 by the Sanborn Map Co.

APR. 1925
FULTON
KY.



24

5

E. STATE LINE.

4

APR. 1925
FULTON
KY.

24

SOUTH FULTON HIGH &
GRADE SCHOOL
BAPT. CHURCH
LUMBER SHED

174

175

HOLMAN

SOUTH FULTON TENN.

WILLINGHAM ST.

CAVITT ST.

163

(61)

POWERS ST.

162

M^S FALL

161

PUBLIC SCHOOL
(200-250)
BAPT. CHURCH
LUMBER SHED

(62)

ROACH

160

Mt. Olive
(C.B.)
BAPTIST CHURCH
(SUNDAY SCHOOL)
LUMBER SHED

STOVALL

159
(63)

182

181

158

RAILROAD

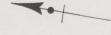
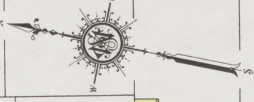
Creek

STEPHENS

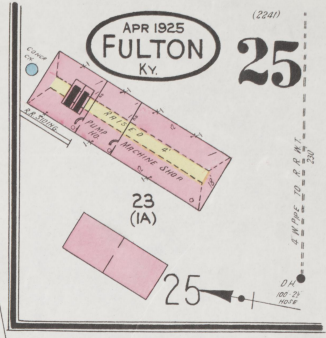
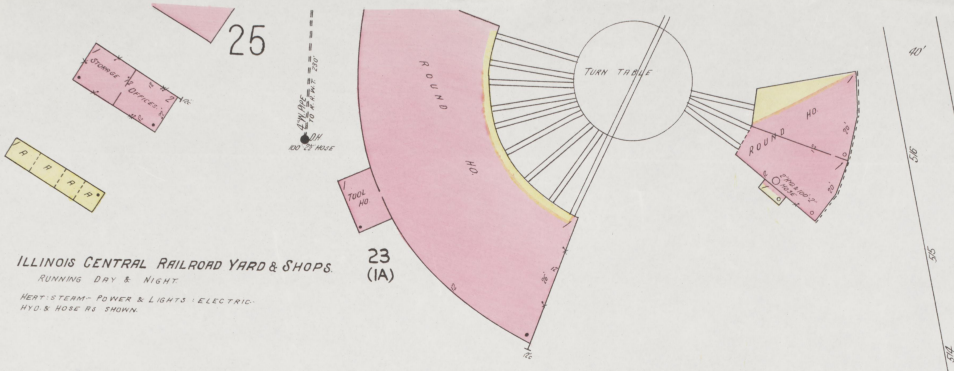
Scale of Feet.
0 10 20 30 40 50 100 150

Copyright 1925 by the Columbia Map Co.

23



25



28