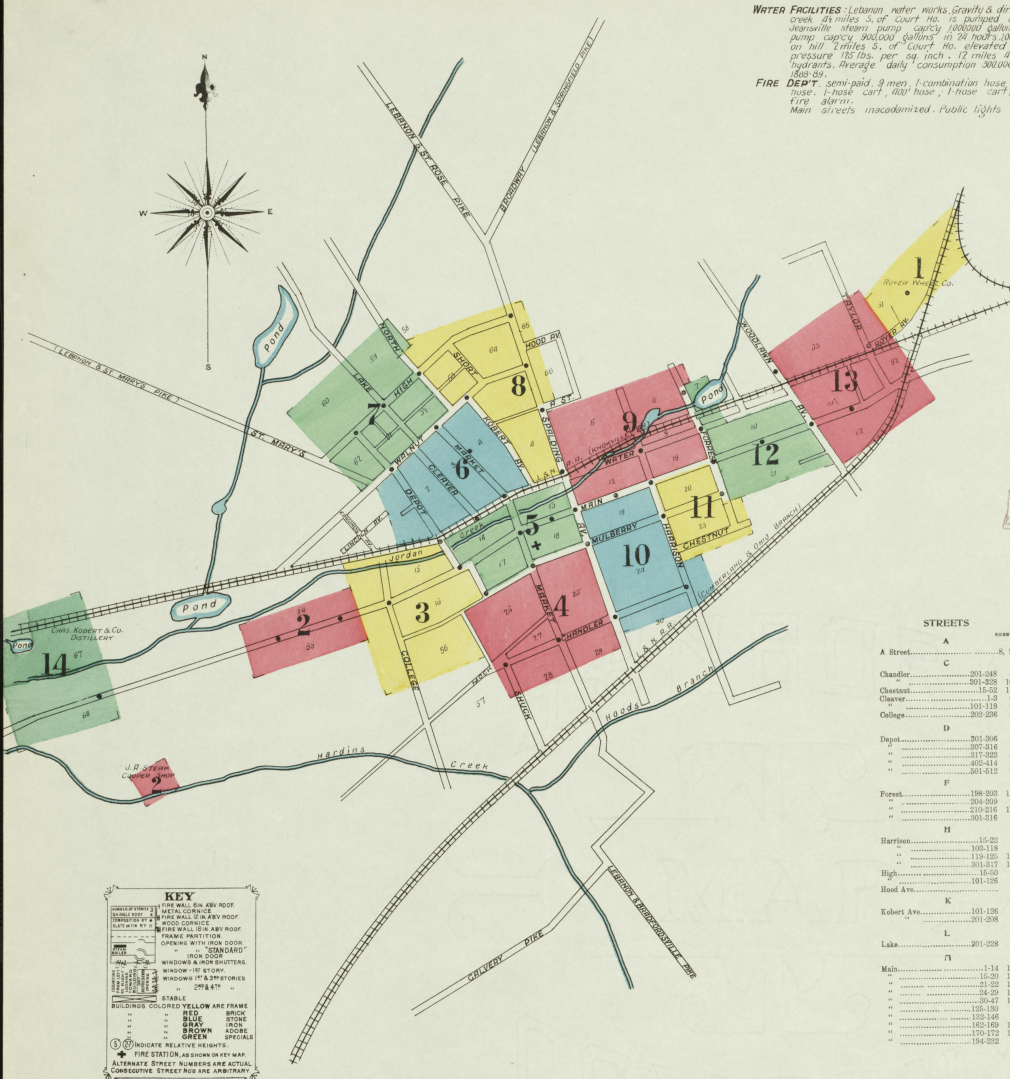
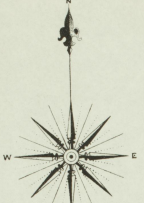




WATER FACILITIES: Lebanon water works Gravity & direct pumping system, water from creek 4 1/2 miles S. of Court Ho. is pumped directly through mains to waterworks steam pump, capacity 100,000 gallons in 24 hours and 600,000 steam pump capacity 400,000 gallons in 24 hours, 100,000 gallons reserve reservoir on hill 1/2 miles S. of Court Ho. elevated 2 1/2 above main of average water pressure 125 lbs. per sq. inch. 12 miles 4.6-8-10 water mains, 53 double hydrants. Average daily consumption 300,000 gallons. System installed in 1888-89.

FIRE DEPT. semi-paid, 9 men, 1 combination hose and hook & ladder truck, 1500' hose, 1 hose cart, 400' hose, 1 hose cart, 100 hose, 2 horses, public bell fire alarm.

Main streets macadamized. Public lights electric.



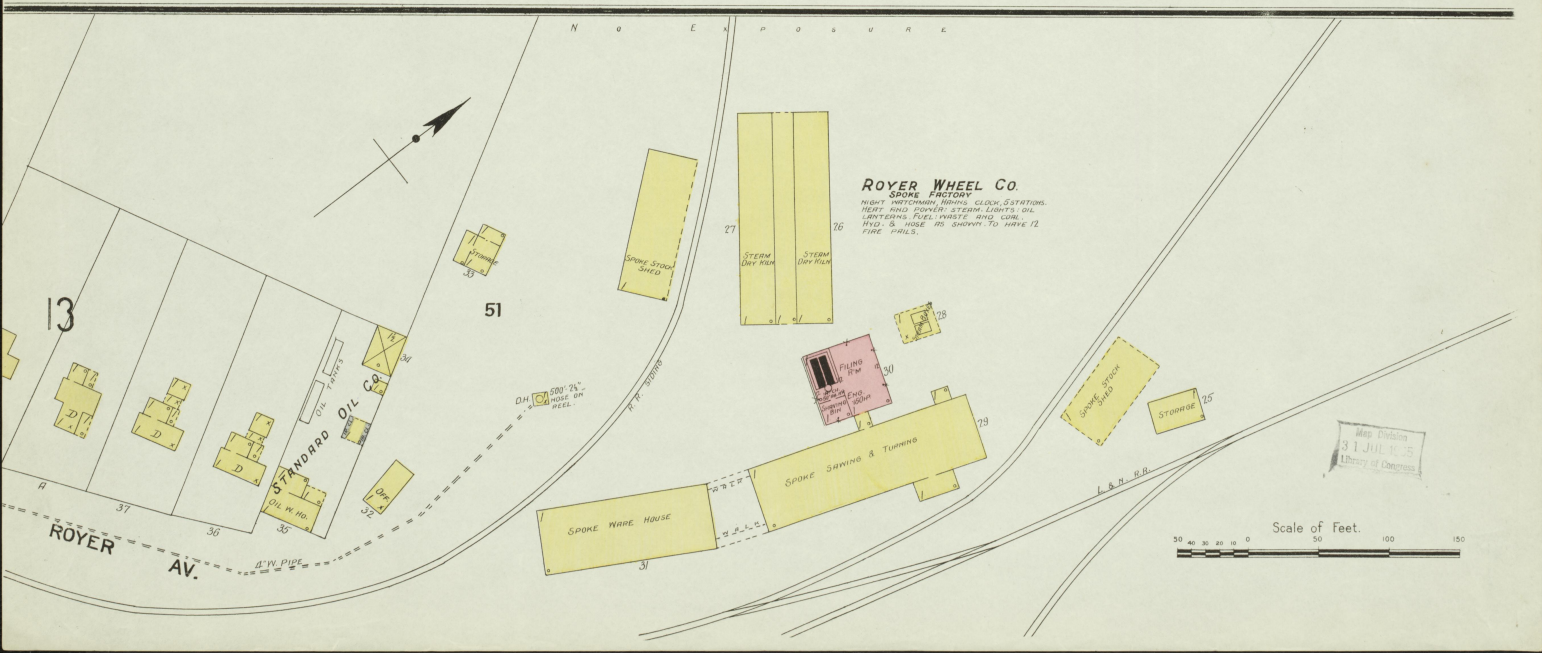
KEY

1. FIRE WALL OR AIR ROOF
2. WATER COURSE OR ROOF
3. WOOD COURSE
4. BRICK WALL OR AIR ROOF
5. FRAME PARTITION
6. OPENING WITH IRON DOOR
7. WINDOW WITH IRON DOOR
8. WINDOW WITH SHUTTERS
9. WINDOW WITH SHUTTERS
10. WINDOW WITH SHUTTERS
11. WINDOW WITH SHUTTERS
12. WINDOW WITH SHUTTERS
13. WINDOW WITH SHUTTERS
14. WINDOW WITH SHUTTERS
15. WINDOW WITH SHUTTERS
16. WINDOW WITH SHUTTERS
17. WINDOW WITH SHUTTERS
18. WINDOW WITH SHUTTERS
19. WINDOW WITH SHUTTERS
20. WINDOW WITH SHUTTERS
21. WINDOW WITH SHUTTERS
22. WINDOW WITH SHUTTERS
23. WINDOW WITH SHUTTERS
24. WINDOW WITH SHUTTERS
25. WINDOW WITH SHUTTERS
26. WINDOW WITH SHUTTERS
27. WINDOW WITH SHUTTERS
28. WINDOW WITH SHUTTERS
29. WINDOW WITH SHUTTERS
30. WINDOW WITH SHUTTERS
31. WINDOW WITH SHUTTERS
32. WINDOW WITH SHUTTERS
33. WINDOW WITH SHUTTERS
34. WINDOW WITH SHUTTERS
35. WINDOW WITH SHUTTERS
36. WINDOW WITH SHUTTERS
37. WINDOW WITH SHUTTERS
38. WINDOW WITH SHUTTERS
39. WINDOW WITH SHUTTERS
40. WINDOW WITH SHUTTERS
41. WINDOW WITH SHUTTERS
42. WINDOW WITH SHUTTERS
43. WINDOW WITH SHUTTERS
44. WINDOW WITH SHUTTERS
45. WINDOW WITH SHUTTERS
46. WINDOW WITH SHUTTERS
47. WINDOW WITH SHUTTERS
48. WINDOW WITH SHUTTERS
49. WINDOW WITH SHUTTERS
50. WINDOW WITH SHUTTERS
51. WINDOW WITH SHUTTERS
52. WINDOW WITH SHUTTERS
53. WINDOW WITH SHUTTERS
54. WINDOW WITH SHUTTERS
55. WINDOW WITH SHUTTERS
56. WINDOW WITH SHUTTERS
57. WINDOW WITH SHUTTERS
58. WINDOW WITH SHUTTERS
59. WINDOW WITH SHUTTERS
60. WINDOW WITH SHUTTERS
61. WINDOW WITH SHUTTERS
62. WINDOW WITH SHUTTERS
63. WINDOW WITH SHUTTERS
64. WINDOW WITH SHUTTERS
65. WINDOW WITH SHUTTERS
66. WINDOW WITH SHUTTERS
67. WINDOW WITH SHUTTERS
68. WINDOW WITH SHUTTERS
69. WINDOW WITH SHUTTERS
70. WINDOW WITH SHUTTERS
71. WINDOW WITH SHUTTERS
72. WINDOW WITH SHUTTERS
73. WINDOW WITH SHUTTERS
74. WINDOW WITH SHUTTERS
75. WINDOW WITH SHUTTERS
76. WINDOW WITH SHUTTERS
77. WINDOW WITH SHUTTERS
78. WINDOW WITH SHUTTERS
79. WINDOW WITH SHUTTERS
80. WINDOW WITH SHUTTERS
81. WINDOW WITH SHUTTERS
82. WINDOW WITH SHUTTERS
83. WINDOW WITH SHUTTERS
84. WINDOW WITH SHUTTERS
85. WINDOW WITH SHUTTERS
86. WINDOW WITH SHUTTERS
87. WINDOW WITH SHUTTERS
88. WINDOW WITH SHUTTERS
89. WINDOW WITH SHUTTERS
90. WINDOW WITH SHUTTERS
91. WINDOW WITH SHUTTERS
92. WINDOW WITH SHUTTERS
93. WINDOW WITH SHUTTERS
94. WINDOW WITH SHUTTERS
95. WINDOW WITH SHUTTERS
96. WINDOW WITH SHUTTERS
97. WINDOW WITH SHUTTERS
98. WINDOW WITH SHUTTERS
99. WINDOW WITH SHUTTERS
100. WINDOW WITH SHUTTERS

INDEX

STREETS	INDEX	SPECIALS	INDEX
A Street	9	Lancaster, H. & Co., Saw & Planing Mill	9
Chandler	201-248	Lebanon Electric Light Plant	9
Chesnut	301-328	Lebanon Co., Light & Power Co.	9
Clear	1-3	Lebanon Co., Mill	9
College	300-286	Lebanon Co., Paper Mill	9
Dept.	301-366	Lebanon Co., Water Works	9
Forest	198-203	Lebanon Co., Sewerage Works	9
Harrison	15-22	Lebanon Co., Telephone Exchange	9
High	101-118	Lebanon Co., Public School (Negro)	12
Robert Ave.	101-125	Lebanon Co., Public School	12
Lake	201-238	Lebanon Co., Public School (Negro)	12
Main	1-14	Lebanon Co., Public School	12
Market	1201-1227	Lebanon Co., Public School	12
Mulberry	200-234	Lebanon Co., Public School	12
North	101-125	Lebanon Co., Public School	12
Robert Ave.	101-125	Lebanon Co., Public School	12
St. Mary's	101-125	Lebanon Co., Public School	12
Spaulding Ave.	101-118	Lebanon Co., Public School	12
Taylor	101-125	Lebanon Co., Public School	12
Walnut	101-125	Lebanon Co., Public School	12
Water	101-125	Lebanon Co., Public School	12
Woodlawn Ave.	101-125	Lebanon Co., Public School	12

NOTE—House numbers given are arbitrary.



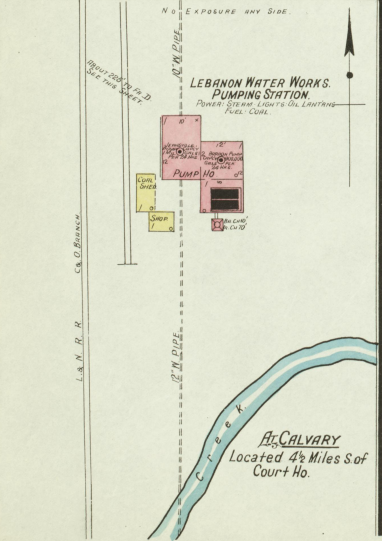
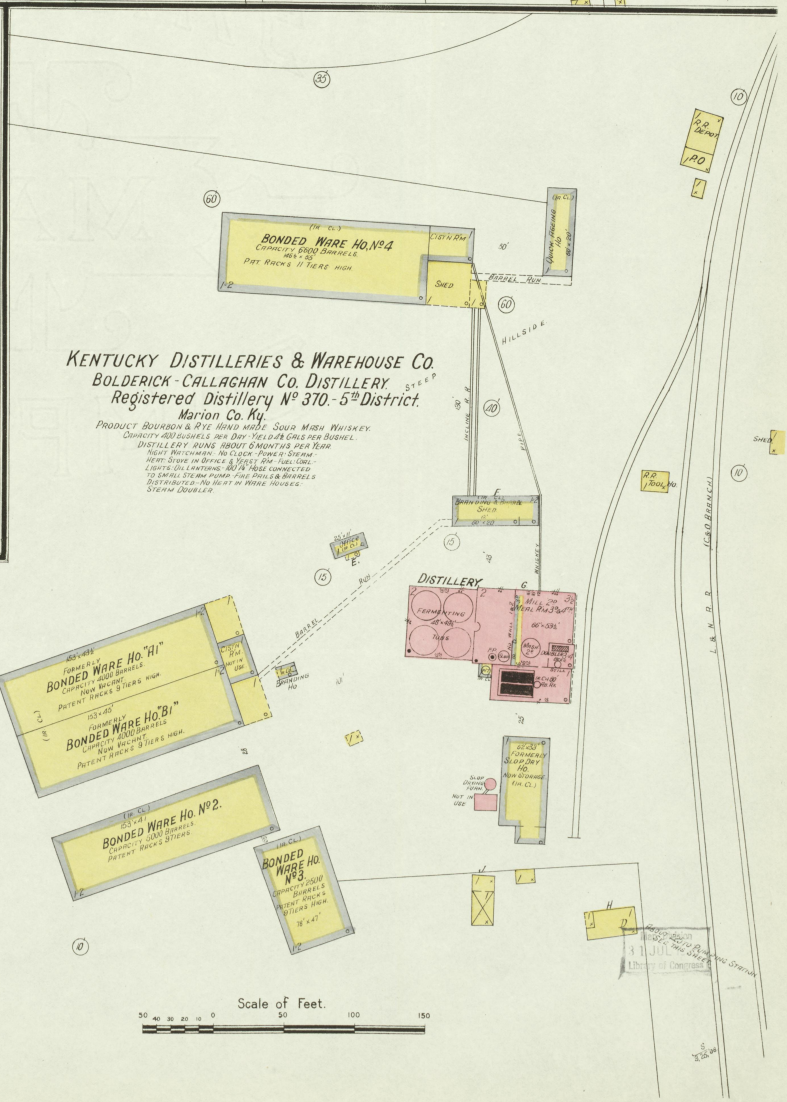
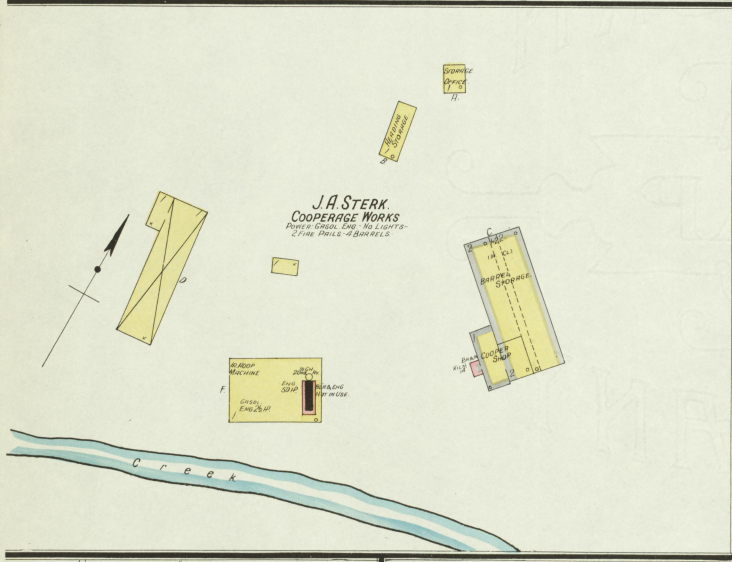
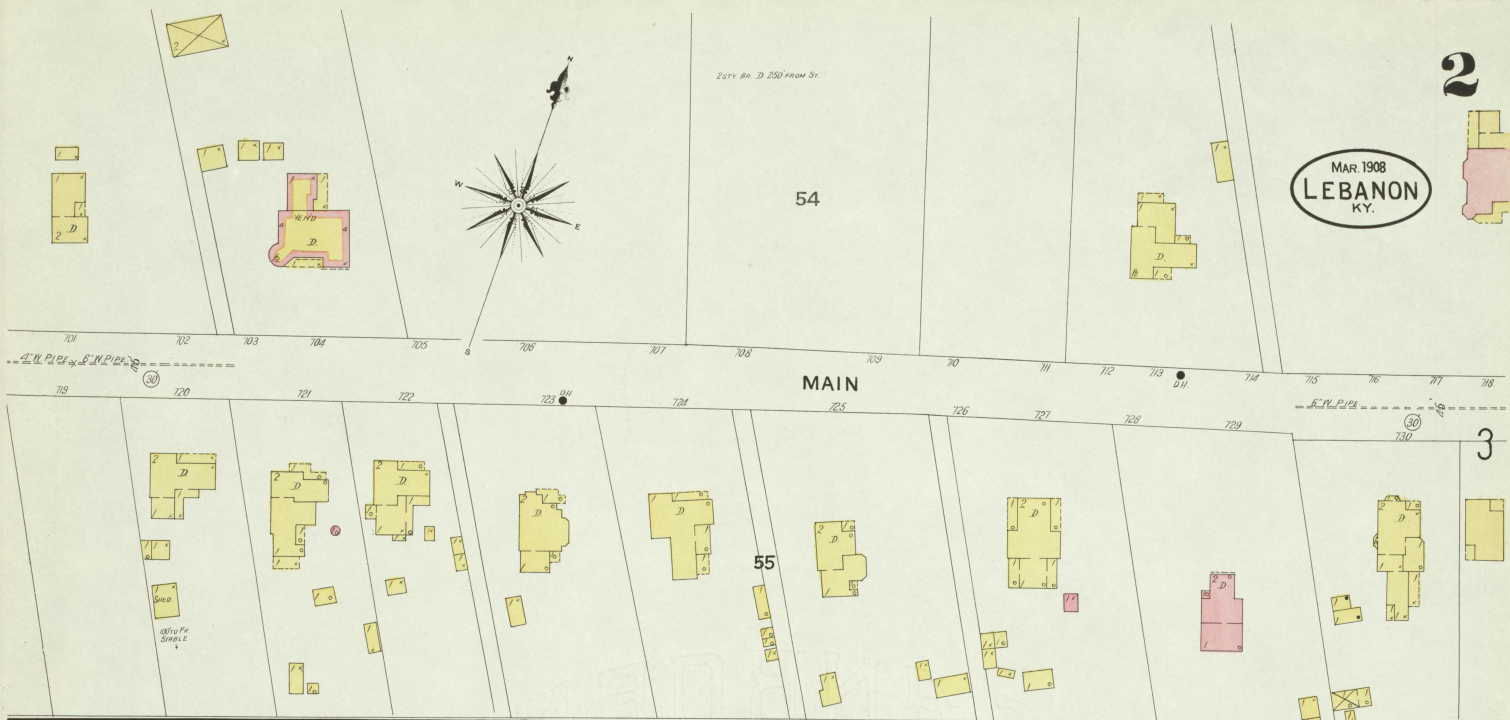
Map Station 31 JUL 1895 Library of Congress

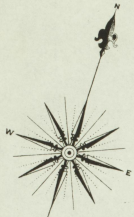
MAR. 1908
LEBANON
KY.

54

MAIN

55





54

6

3

L. & N. R. R. Freight Ho
200' x 100'

MAR. 1908
LEBANON
KY.

WATER ST.

Creek

15

DEPOT

5

2

MAIN

COLLEGE

16

DEPOT

55

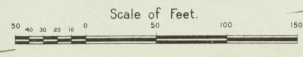
LEBANON PUBLIC SCHOOL
HEAT STOVES - NO LIGHTS.

MULBERRY

56

SHUCK

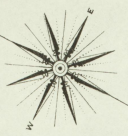
4



Map Division
JUL 1 1935
Library of Congress

MAR. 1908
LEBANON
KY.

10
SPALDING AV.



SCHOOL

ST. AUGUSTINE'S SCHOOL

DION M E CHURCH

MULBERRY

5

25

29

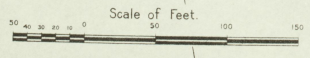
CHANDLER

MARKET

MULBERRY

DEPOT ST

3



26

27

28

MOCK

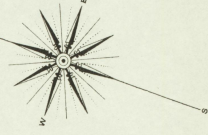
SHUCK

57

SHUCK

Mess. Division
JUL 15 1908
Library of Congress

MAR. 1908
LEBANON
KY.



ROBERT AV.

WATER

WATER
CLEAVER ST.

SPALDING AV. 10

MARKET

MAIN

MULBERRY

MULBERRY

W. E. MERKLEY MILL CO. INC.
 NO WATCHMAN - POWER - STEAM - FULL COAL
 LIGHTS - ELECTRIC - V & MORE NO SMOKE
 HEAT - STORE IN OFFICE & ONE IN MILL
 FINE PRICES & BRANDED (ORDERED)
 ---MACHINERY---
 1ST & 2ND STRAND DOUBLE ROLL
 1 THREE HIGH CORN MILL
 1 FLOUR CRACKER
 2* 1 PURIFIER, 1 BLEACHER
 1 PROMOTTER, 1 FEED SCREEN
 1 BRAN DUSTER
 3* FLOUR SIFTER, 1 HEAVY SEPARATOR
 2 WHEAT SQUANDERS, 1 CORN SQUANDER
 1 CENT'AL REEL

Scale of Feet. 0 50 100 150

Map Edition
1 JULY 1908
Library of Congress

8 KOBERT AV.

MAR 1908
LEBANON
KY.

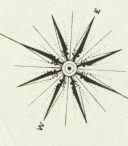
6

4

MARKET

1ST PRESBYTERIAN CHURCH
HEAT PLUM
LIGHTS ELEC
RESTORERS &c

3



5

WATER

LAKE ST.

WALNUT

CLEAVER

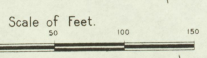
2

DEPOT

W.N. BRANTON & SON HOTEL
RESTORERS &c

SCOTT & SPALDING
LUMBER YARD

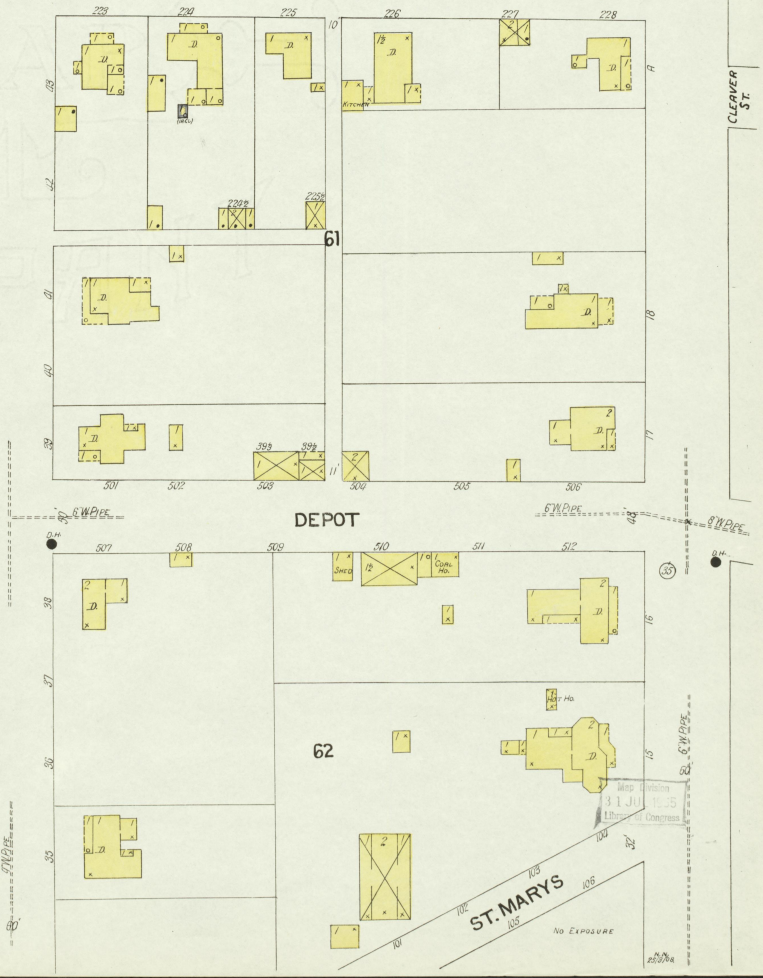
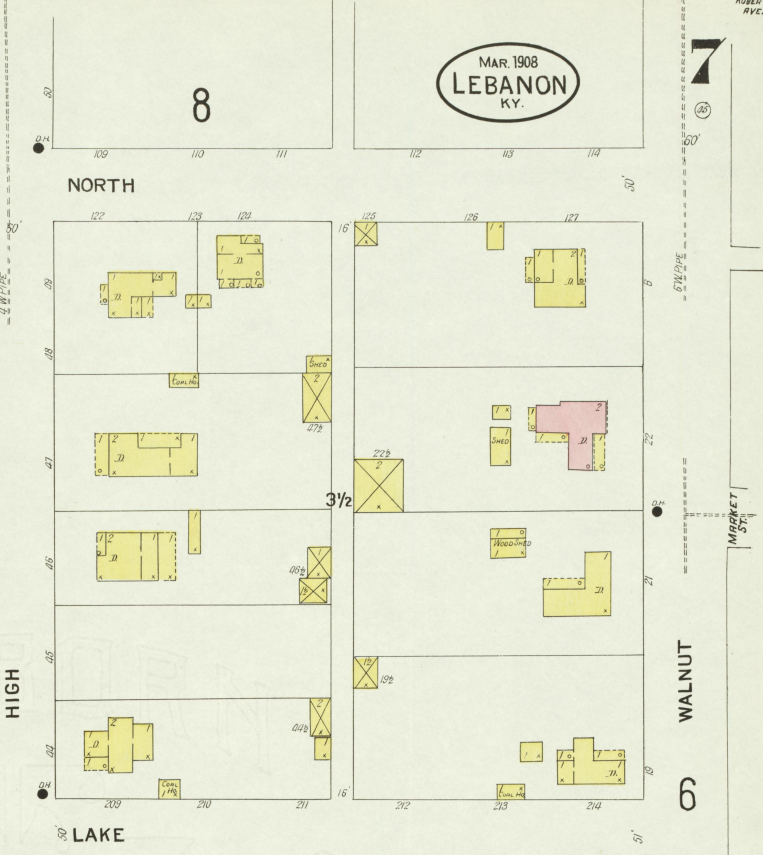
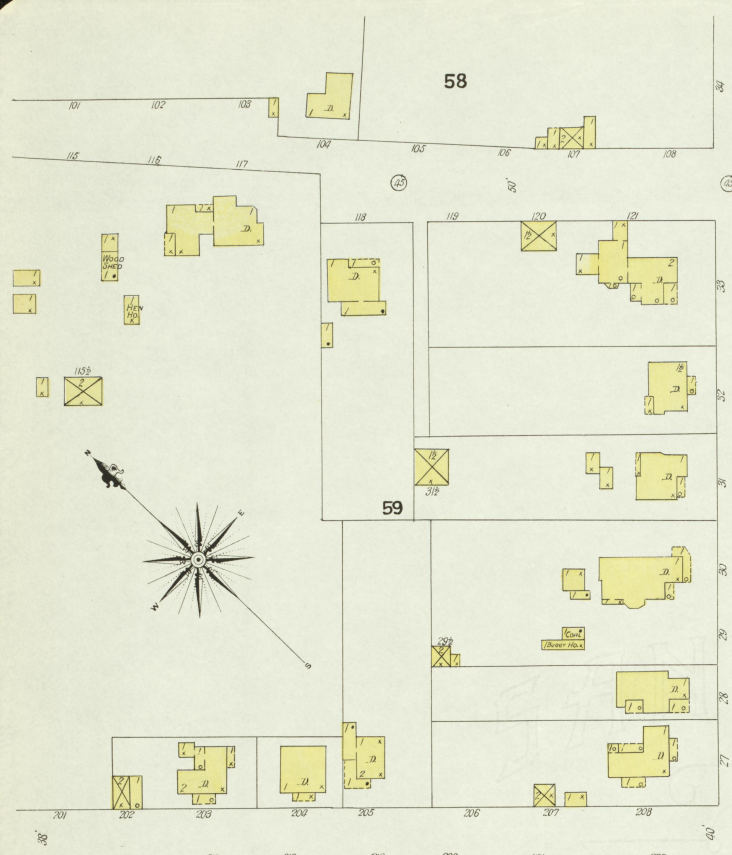
Shop 110000
31 JUL 1915
Library of Congress



STRMANS ST.



MAR. 1908
LEBANON
KY.



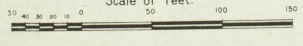
MARSHET
ST.

WALNUT

CLEVER
ST.

ST. MARYS

Scale of Feet.



NO EXPOSURE

MAR. 1908
LEBANON
KY.



8

65

66

9

HIGH

HIGH

NORTH

SHORT

WALNUT

WALNUT

SPALDING AV.

KOBERT AV.

KOBERT AV.

6

N.

5

WATER

Hood Av

H. ST. AUSTIN

Scale of Feet.

Map Division
JUL 1935
Library of Congress

LINSEY
CHURCH
MECHUEL

9

11

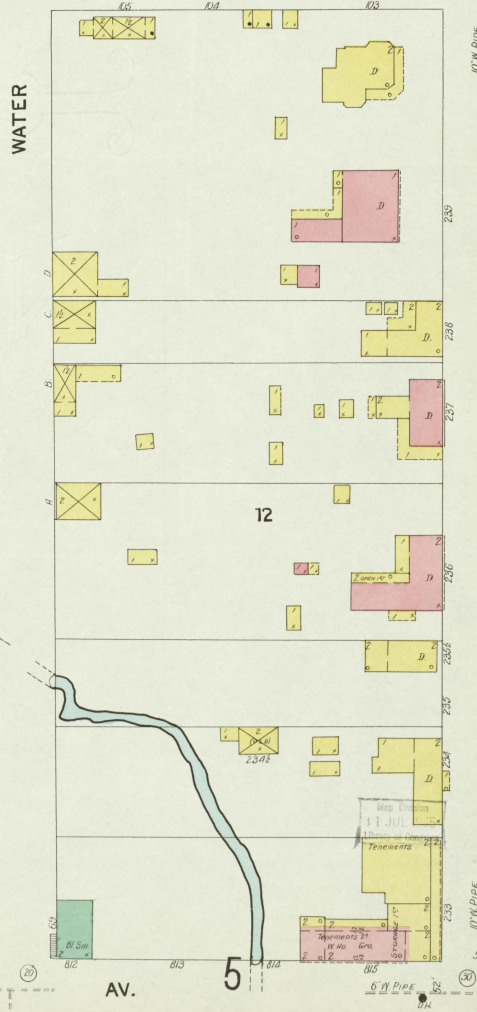
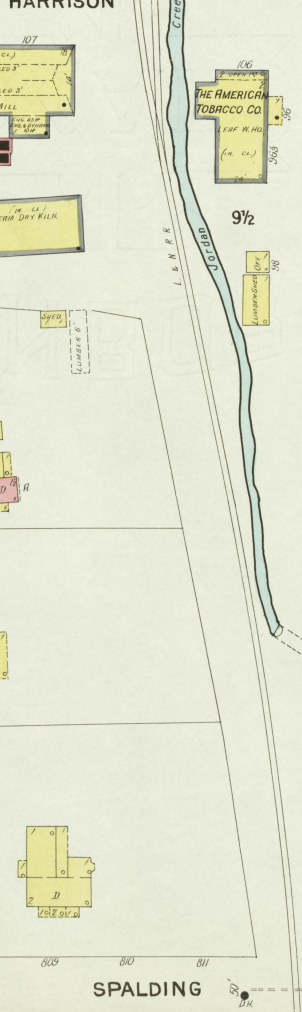
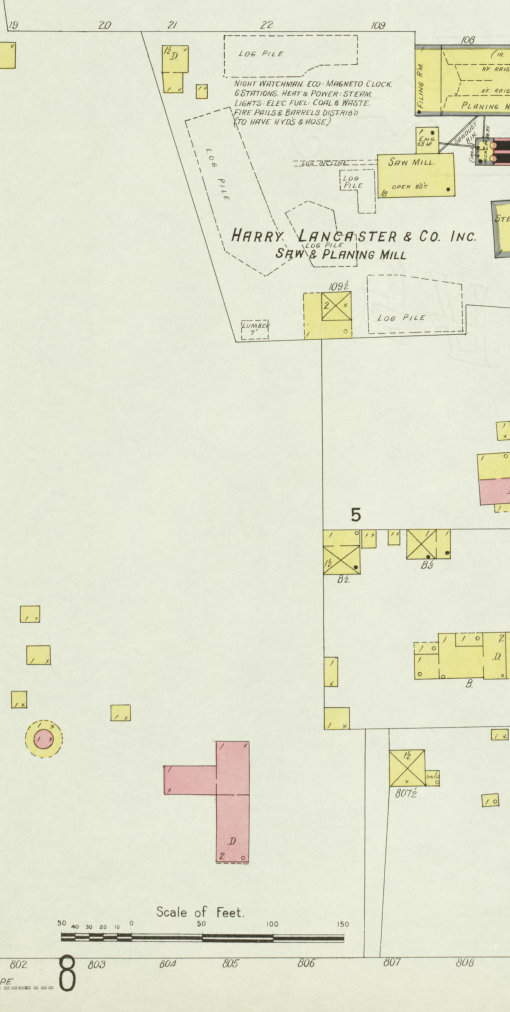
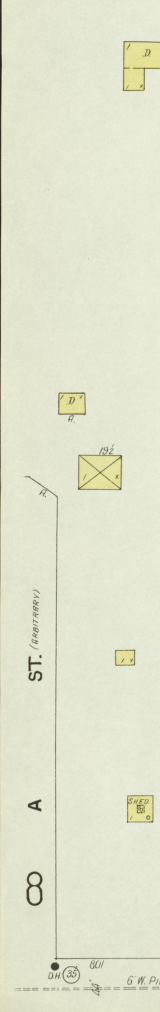
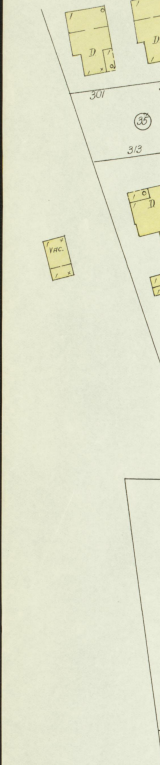
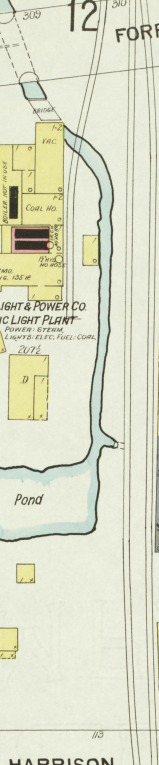
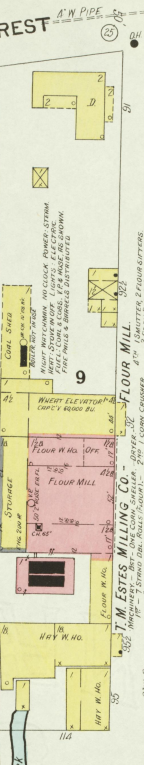
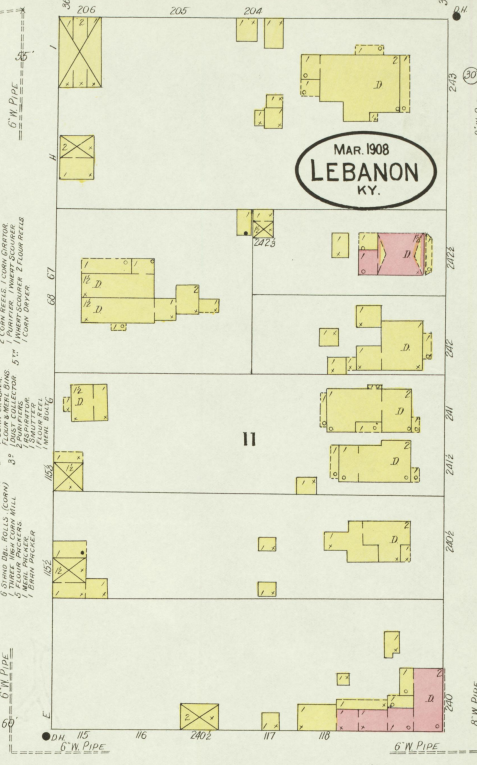
MAIN

10

12

5

MAR. 1908
LEBANON
KY.



6\"/>

8\"/>

ST. (BAPTIST)
A
C

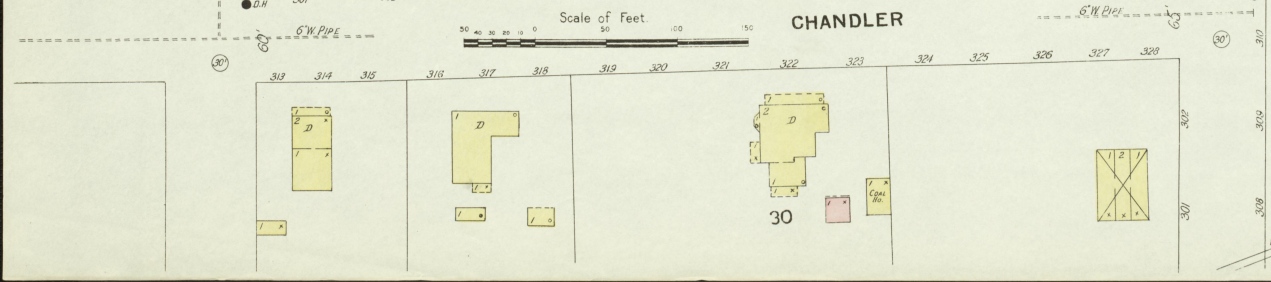
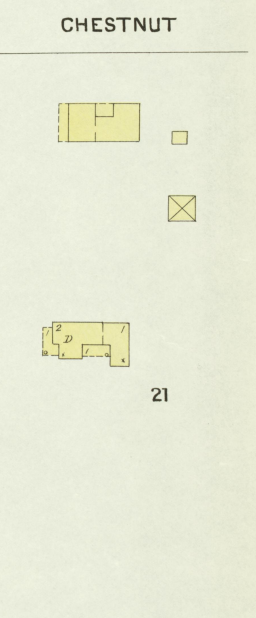
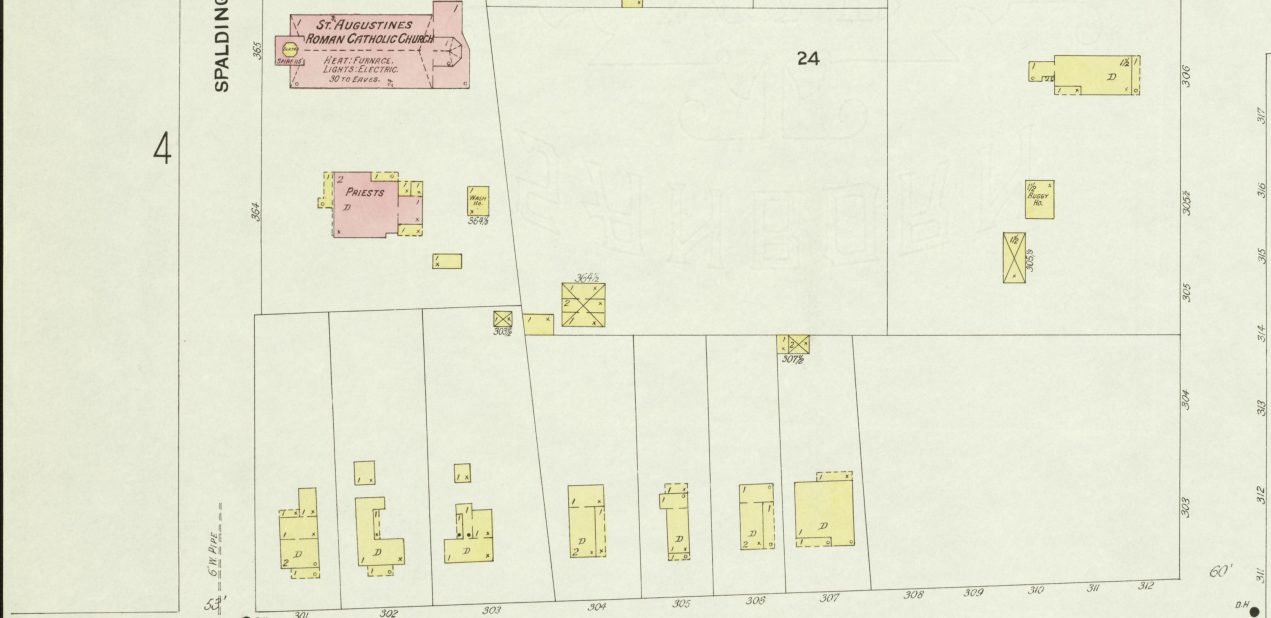
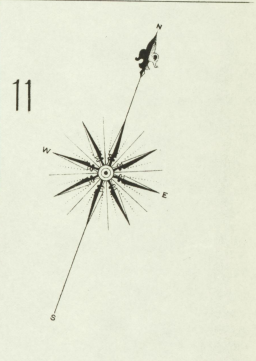
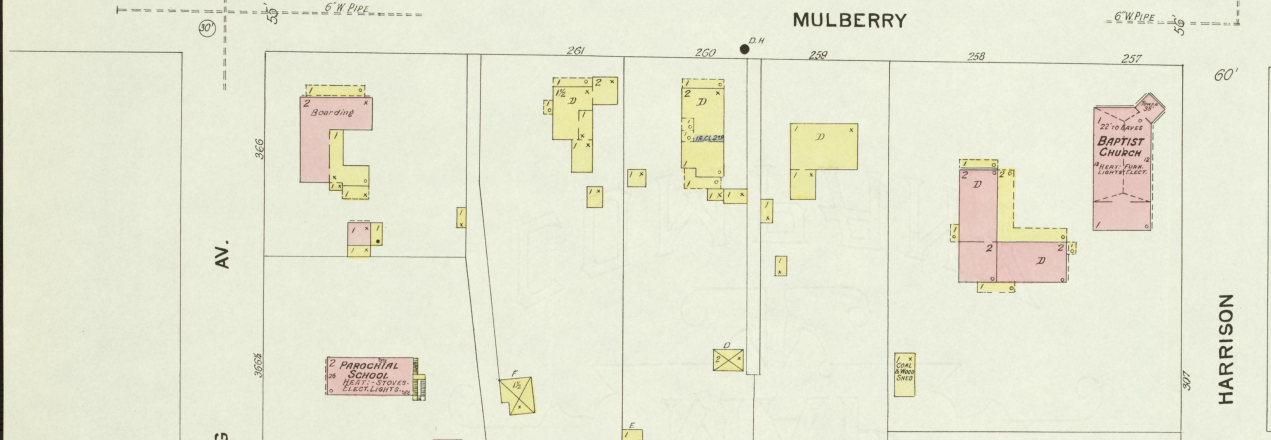
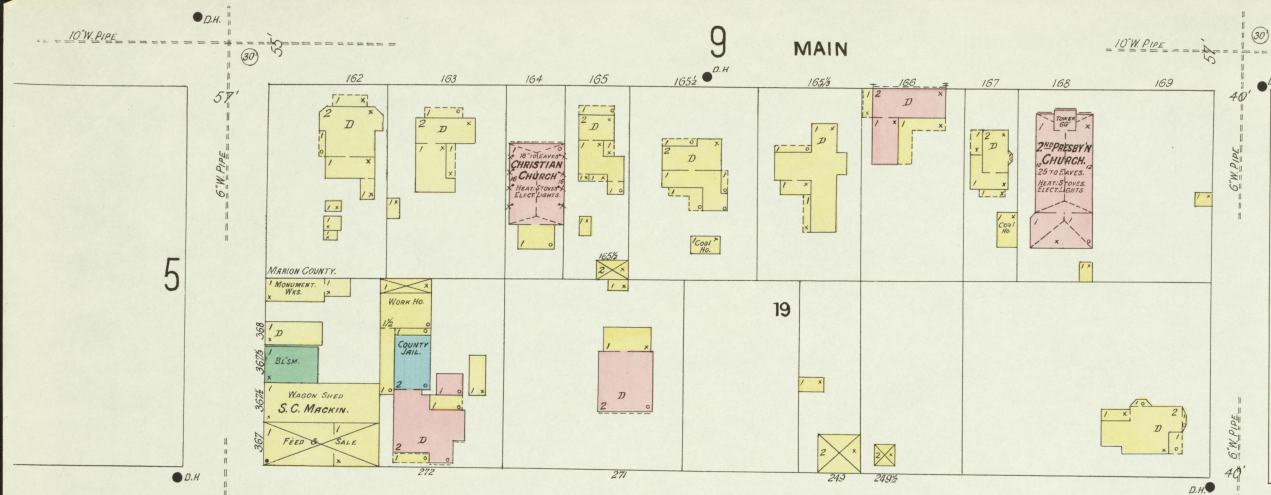
SPALDING

AV.

5\"/>

Scale of Feet.
0 10 20 30 40 50 60 70 80 90 100 110 120 130 140 150

MAR. 1908
LEBANON
KY.

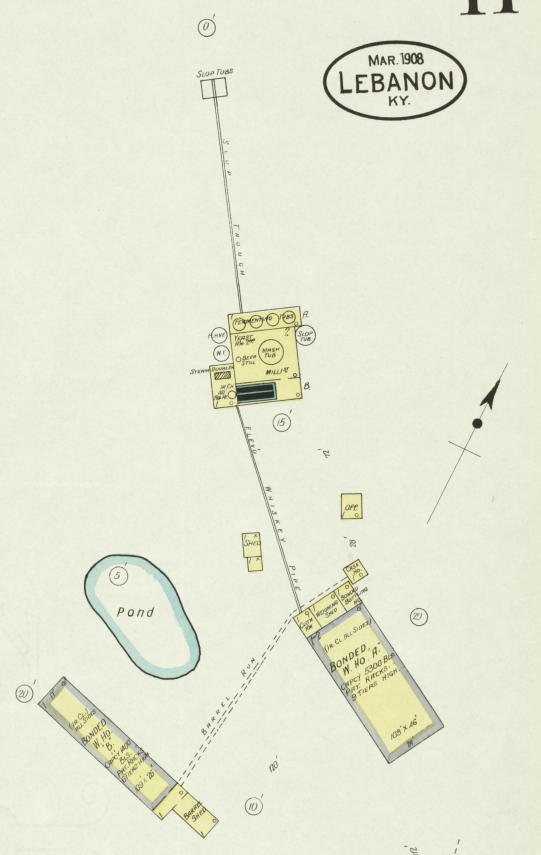
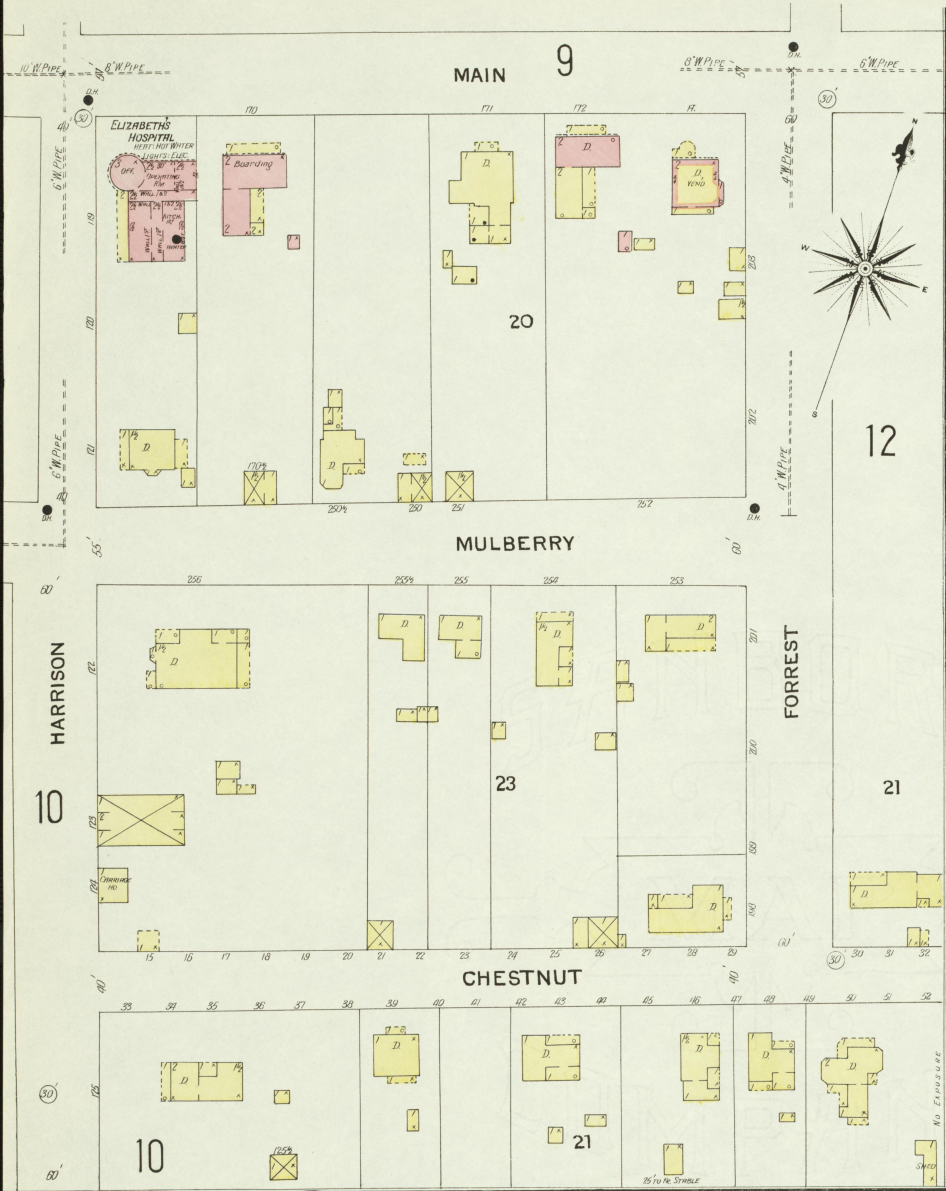


Scale of Feet. 0 20 40 60 80 100 120 140 160 180 200

11 JUL 1 1935
Library of Congress

L. S. & A. R. CUMBERLAND & OHIO DIV.

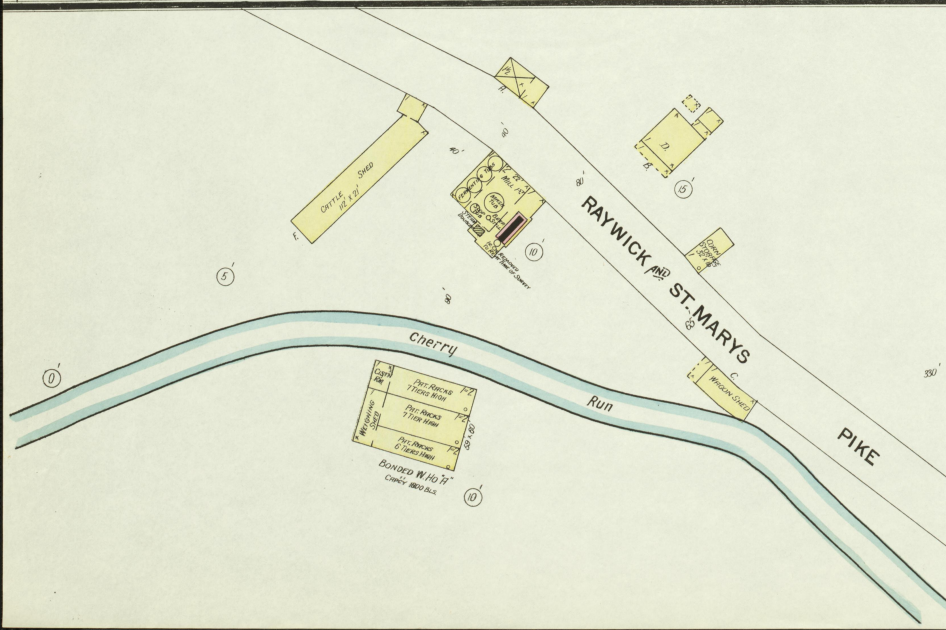
MAR. 1908
LEBANON
KY.



THE W. H. HEAD DISTILLING CO. INC
 Formed by W. H. HEAD & CO.
 Registered Distillery No. 329 - 5th Dist. Marion Co. Ky.

PRODUCT BOURBON WHISKEY
 RUNS ABOUT 3 MONTHS PER YEAR.
 AVERAGE YIELD 48 GALS PER DAY
 ONLY CAPCY 61 BU. PER DAY
 NO WATCHMAN - POWER STEAM - FUEL WOOD
 HEAT - STOVE IN OFFICE, BUTTING BAR & YEAST RM
 LIGHTS - OIL LANTERNS - 80 IN HOUSE - 6 F.PALS
 NO HEAT IN W. H. H. - STEAM DOUBLER

Located 1 1/2 Miles W. of Lebanon
 and 2 Miles W. of Raywick



VAN CLEAVE & HARDESTY
 J. M. KNOTT ASSOCIES
 Registered Distillery No. 15 - 5th Dist. Marion Co. Ky.

PRODUCT BOURBON WHISKEY
 RUNS ABOUT 3 MONTHS PER YEAR.
 AVERAGE YIELD 4 GALS PER DAY
 ONLY CAPCY 72 BU. PER DAY
 NO WATCHMAN - HEAT - STOVE IN OFFICE
 LIGHTS - OIL LANTERNS - FUEL, COAL & WOOD
 POWER STEAM - NO FUEL STOVE
 NO HEAT IN W. H. H. - STEAM DOUBLER
 (Not in Operation)

Located 1 1/2 Miles W. of Lebanon
 and 1 Mile E. of Raywick

Scale of Feet.
 50 40 30 20 10 0 50 100 150

Map Dated
 31 JUL 18
 Library of Congress

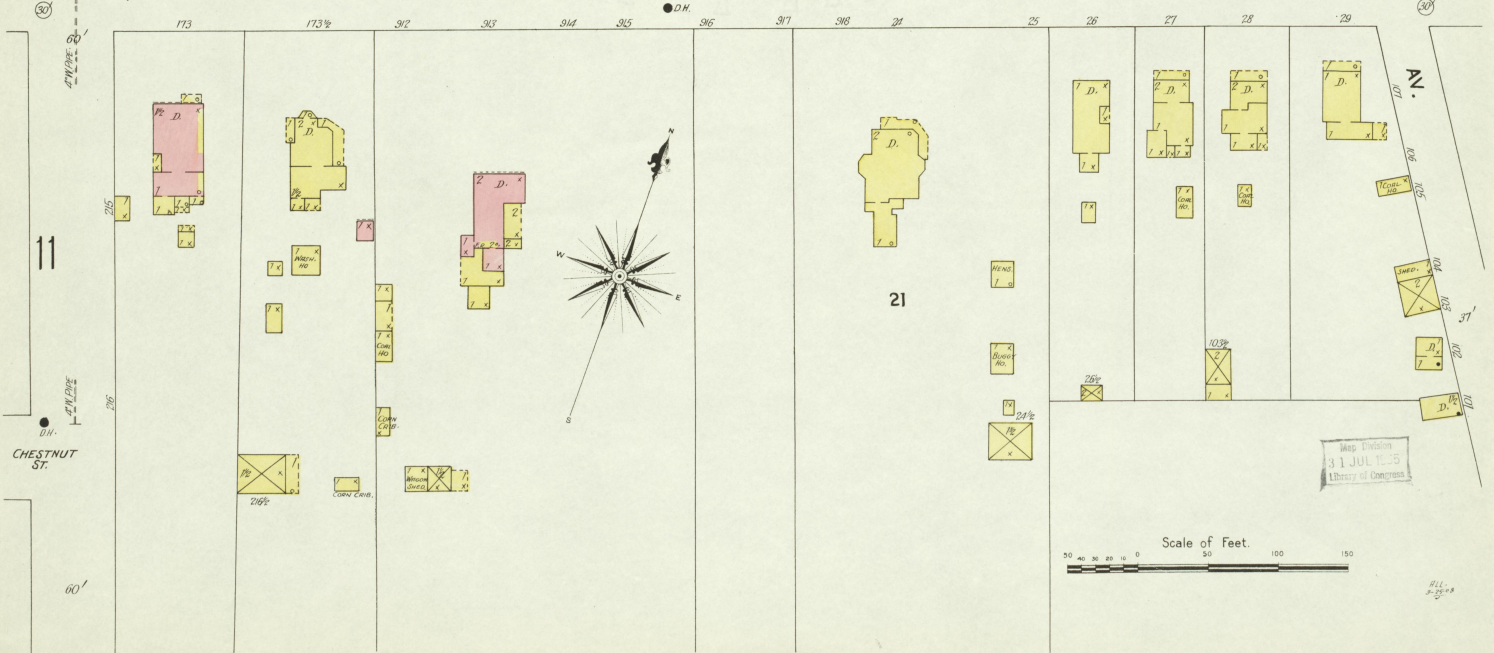
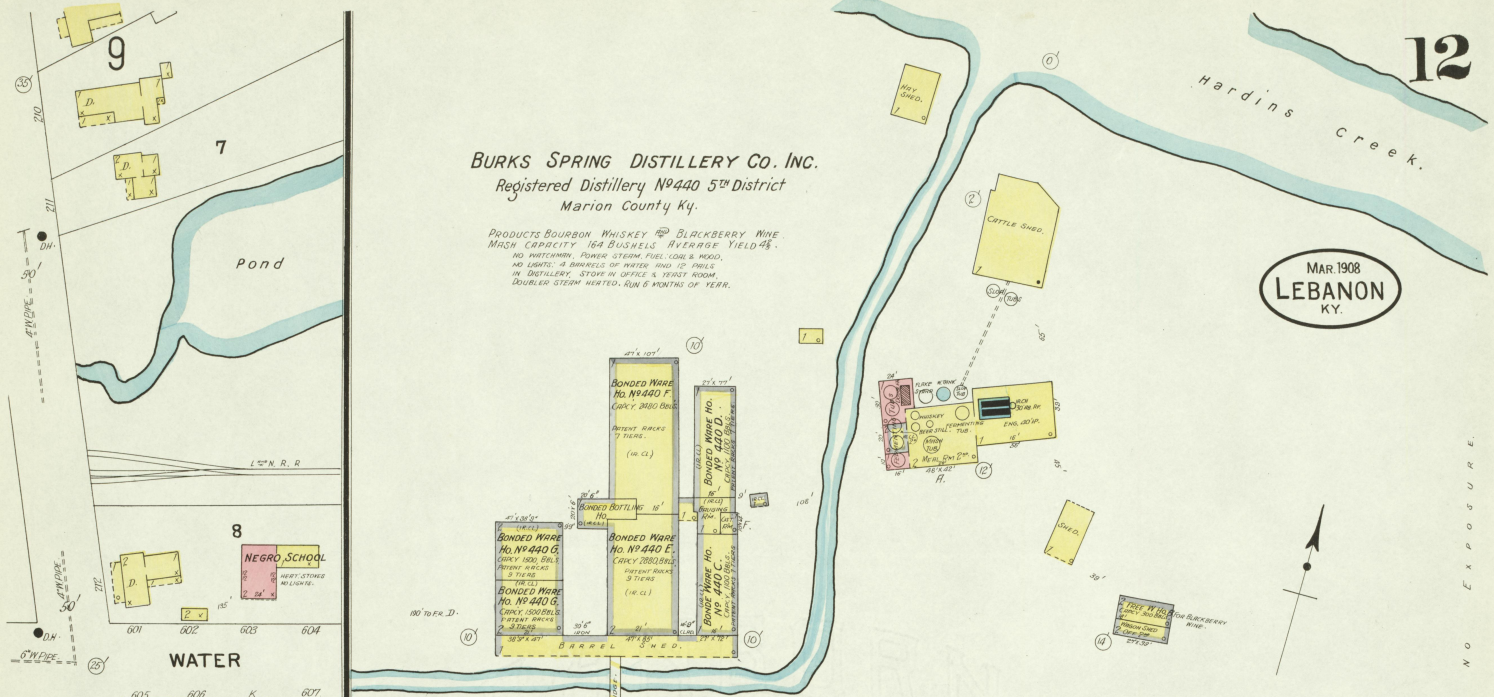
Hardins Creek.

BURKS SPRING DISTILLERY CO. INC.
Registered Distillery No. 440 5th District
Marion County Ky.

PRODUCTS BOURBON WHISKEY & BLACKBERRY WINE.
MASH CAPACITY 164 BUSHELS AVERAGE YIELD 28%.
NO PATENTED POWER STEAM PIPE LINES & HOSES.
NO LIGHTS - 2 BARRELS OF WATER UNDER 15 POUNDS
IN DISTILLERY. STEAM IN OFFICE & TRUCK ROOM.
DOUBLED STEAM HEATED. RUN 6 MONTHS OF YEAR.

MAR 1908
LEBANON
KY.

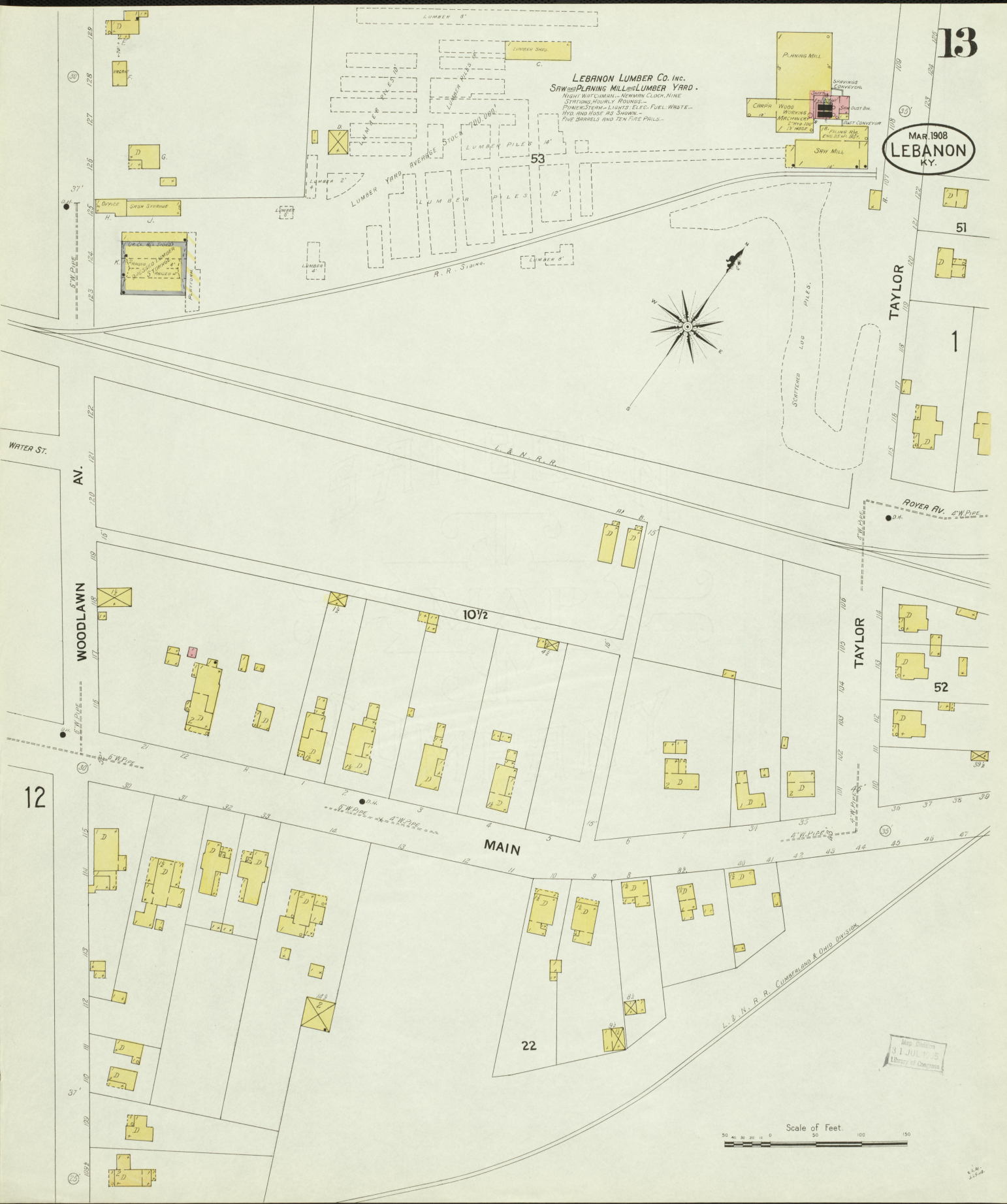
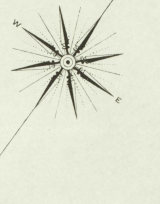
Located 10 Miles N.W. of Lebanon
NEAR LORETTO.



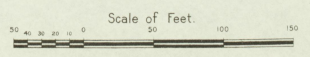
Map Division
31 JUL 1908
Library of Congress

MAR 1908
LEBANON
KY.

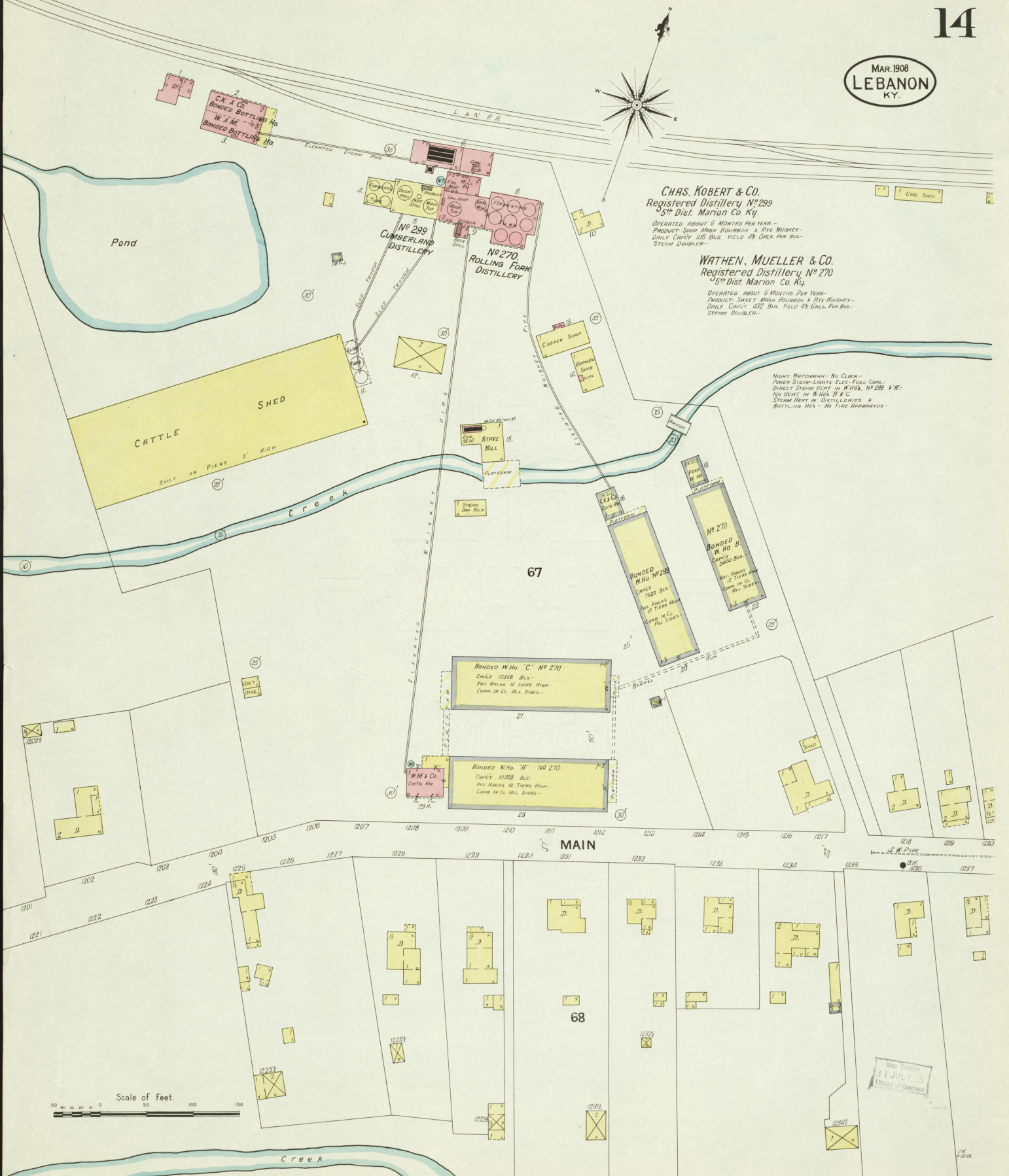
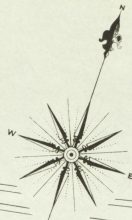
LEBANON LUMBER CO. Inc.
SAW AND PLANING MILLS LUMBER YARD.
NIGHT WATCHMAN - NEWMAN CLOCK NINE
STARTING HOURLY ROUNDS -
FINGERSTERN - LIGHTS - FUEL WASTE -
HYD AND HOSE AS SHOWN.
THE BARRELS AND TEN FIRE PAILS -



Map Division
31 JUL 1955
Library of Congress



MAR. 1908
LEBANON
KY.



CHAS. KOBERT & CO.
Registered Distillery No 299
5th Dist. Marion Co. Ky.

OPERATED ABOUT 5 MONTHS PER YEAR -
PRODUCT, SWEET MASH BOURBON & RYE WHISKEY -
DAILY CAPACITY 105 BUS. YIELD 48 GALS. PER BUS. -
STEAM DOUBLER -

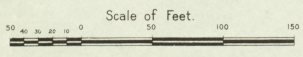
WATHEN, MUELLER & CO.
Registered Distillery No 270
5th Dist. Marion Co. Ky.

OPERATED ABOUT 6 MONTHS PER YEAR -
PRODUCT, SWEET MASH BOURBON & RYE WHISKEY -
DAILY CAPACITY 432 BUS. YIELD 48 GALS. PER BUS. -
STEAM DOUBLER -

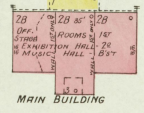
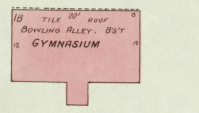
NIGHT WATCHMAN - NO CLOCK -
POWER STEAM - LIGHTS - FUEL COALS -
DIRECT STEAM HEAT IN W.H.O'S, NO 299 & 270 -
NO HEAT IN W.H.O'S B & C -
STEAM HEAT IN DISTILLERIES &
BOTTLING HOS - NO FIRE APPARATUS -

BONDED W.H.O. 'C' NO 270
Capacity 10368 BLS -
Part Racks of Tiers High -
Corner in Co. All Sides -

BONDED W.H.O. 'A' NO 270
Capacity 10368 BLS -
Part Racks of Tiers High -
Corner in Co. All Sides -



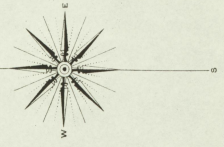
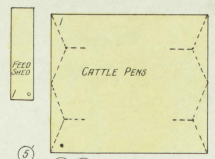
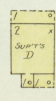
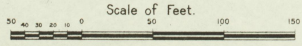
Map Filed
31 JUL 5
Library of Congress



ST. MARYS COLLEGE

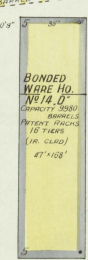
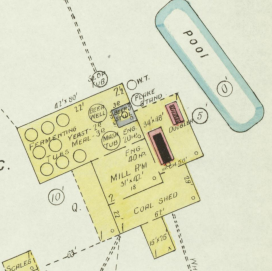
NO PART OF THE BEST STEAM IN ALL BUILDINGS LIGHTS OIL AND GAS WATER SUPPLY BURNED FROM RESERVOIR TO YARD & BUILT BY ST. MARYS COLLEGE. CAPACITY 10000 GALS. PRESSURE BY LAUNDRY BOILER. 200' TRENCH HOSE KEPT IN MAIN BUILDING. NO EXPOSURE ANY SIDE.

At ST MARYS
Located 3 Miles W. of Lebanon



THE BROWN FORMAN DISTILLING Co. Inc.
Formerly B. F. MATTINGLY
Registered Distillery No. 14 - 5th District.
Marion Co. Ky.

PRODUCT BOURBON HAND MADE SOUR MASH.
CAPACITY 23 BUSHELS. YIELD 4.50.
IN OPERATION 5 MONTHS OF 1898.
NIGHT WATCHMAN NO CLOCK. TWO CHEMICAL
EXTRATORS IN CHILLERS AND TWO IN
BOTTLING NO. POWER STEAM. FUEL COAL
LIGHTS ROOM. OIL. HOT. STEAM IN HOT & BOY
ROOM. STEAM IN WARE HO. D. DOUBLER
MOTED BY STEAM IN 2 KITCHENS. NO. 500.
MACHINERY IN MILL RM.
1. COIN CLEANER
1. COIN MILL
1. 20" - 1. COIN SHELLER.



Located near St Marys 1 1/2 Miles W. of St Marys College,
6 1/2 Miles of Lebanon.

Map Division
JUL 1905
Library of Congress

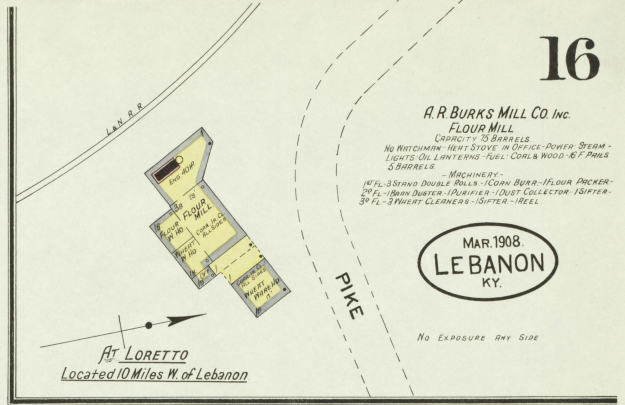
A. R. BURKS MILL CO. Inc.

FLOUR MILL

CAPACITY 50 BARRELS
NO WATCHMAN - HEAT STOVE IN OFFICE - POWER - STEAM - LIGHTS OIL LAMPERS - FUEL - COAL & WOOD - 47 PAILS - 5 BARRELS - MACHINERY - 147 FL - 3 STRAND DOUBLE ROLLERS - 1 COGN BURNER - FLOUR PACKER - 24 FL - 16MM DUSTER - 14 PAILERS - 1 DUST COLLECTOR - 1 SIFTER - 30 FL - 2 NIGHT CLEANERS - 1 DUSTER - 1 REEL

MAR. 1908
LEBANON
KY.

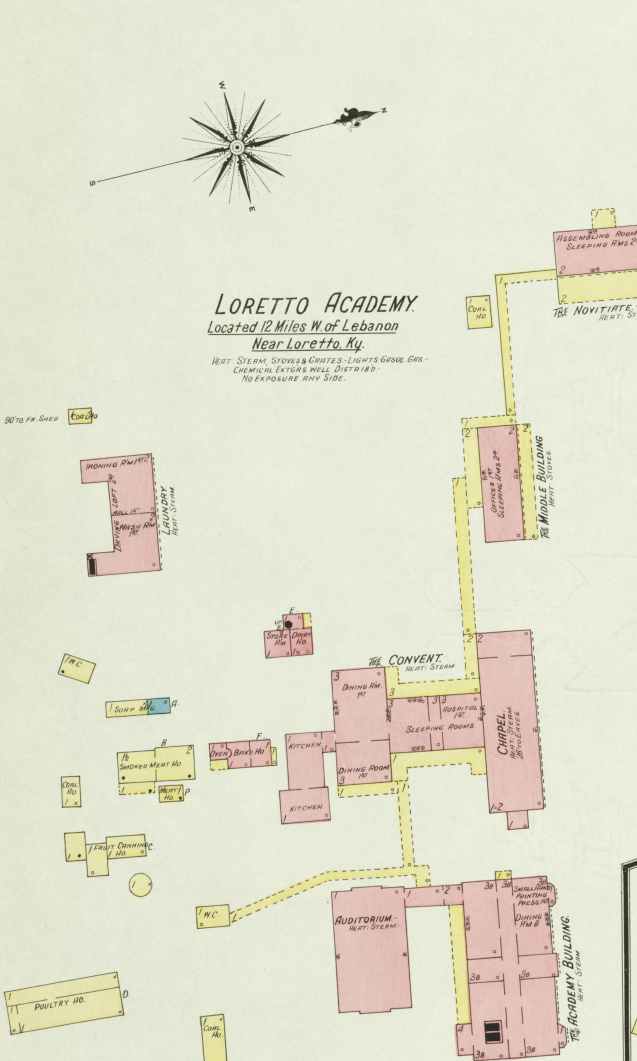
No Exposure Any Side



At LORETTO
Located 10 Miles W. of Lebanon

LORETTO ACADEMY.
Located 12 Miles W. of Lebanon
Near Loretto, Ky.

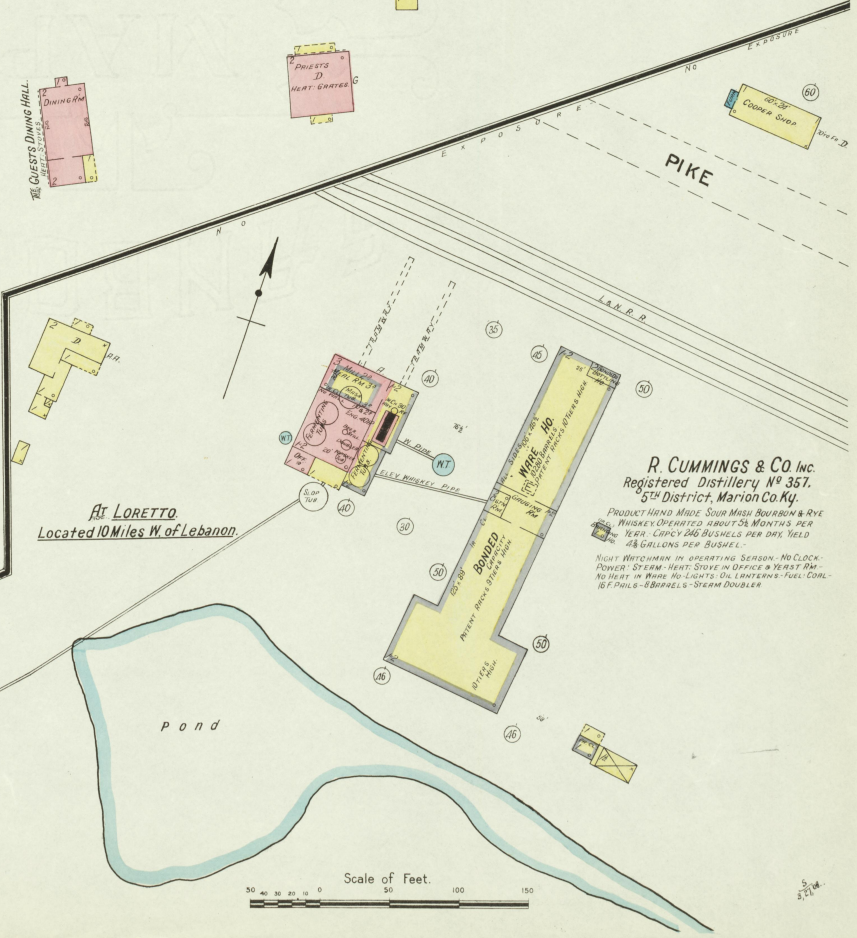
HEAT - STEAM, SYNGAS & COOKS - LIGHTS GASOL GAS - CHEMICAL EXTORS WELL DISTRIBUTED - NO EXPOSURE ANY SIDE.



At LORETTO
Located 10 Miles W. of Lebanon.

R. CUMMINGS & Co Inc.
Registered Distillery No. 357.
5th District, Marion Co. Ky.

PRODUCT HAND MADE SOUR MASH BOURBON & RYE WHISKEY OPERATED ABOUT 54 MONTHS PER YEAR - CAPACITY 240 BUSHELS PER DAY - YIELD 48 GALLONS PER BUSHEL - NIGHT WATCHMAN IN OPERATING SEASON - NO CLOCK - POWER - STEAM - HEAT STOVE IN OFFICE & YEAST RM - NO HEAT IN WARE - NO LIGHTS OIL LAMPERS - FUEL COAL - 15 F PAILS - 8 BARRELS - STEAM DOUBLER



Pond

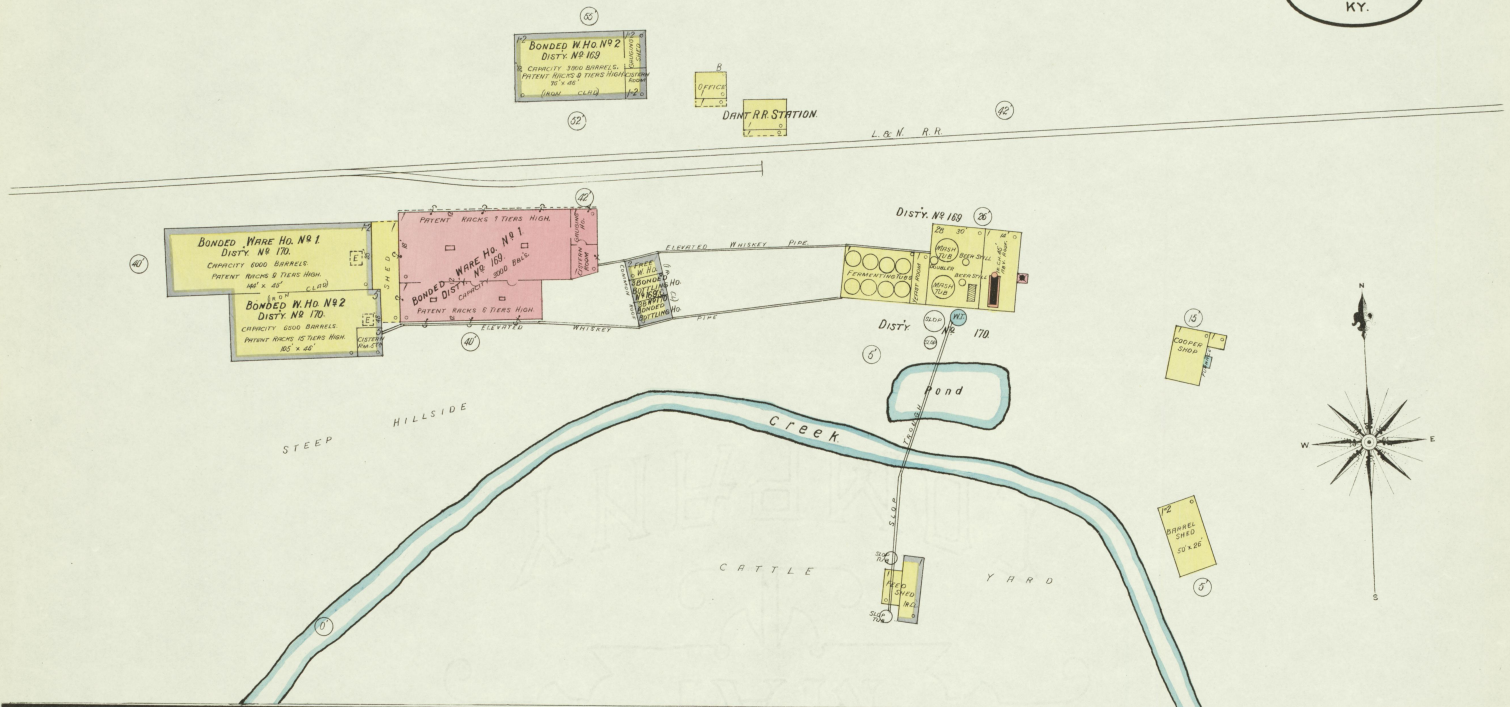
Scale of Feet.

DANT DISTILLERY CO. IN'S (Owners.)
DANT DISTILLERY CO.
 Registered Distillery No 169 -
 5th Distr. Marion Co. Ky.
 DAILY CAPCY 300 BUS.
 AVERAGE YIELD 48 GALS PER BUS. -
 PRODUCT BOURBON SOUR MASH WHISKY IN OPERATION ABOUT 6 MOS. PER YEAR
 NIGHT WATCHMAN IN RUNNING; SEEDING; POWER STEAM; HEAT STORED IN OFFICE.
 YEAST ROOM & BUTTLING HD. DIRECT STEAM HEAT BY WARE HO. NO. 1 & 2.
 DIST. NO. 170 & NEW DIST. WAREHO. NO HEAT IN W.H.O. NO. 2 DIST. NO. 169.
 LIGHTS CHANGES IN W. HO. LIGHTS IN DIST. TUBS; COAL; AND PIPE STEAMWAYS;
 STEAM DOUBLERS.

JESSE MORE HUNT CO.
 Registered Distillery No 170
 5th Distr. Marion Co. Ky.
 DAILY CAPCY 100 BUS.
 AVERAGE YIELD 41 GALS PER BUS.

At DANT STATION
 Located 14 Miles W. of Lebanon

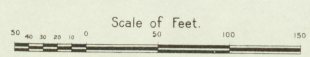
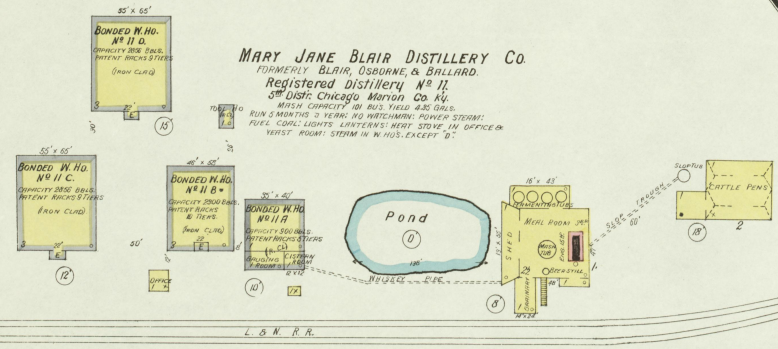
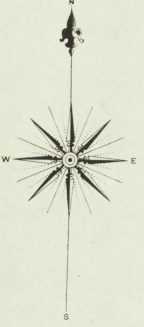
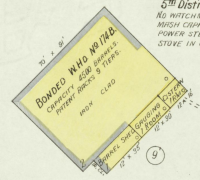
MAR. 1908
LEBANON
 KY.



At CHICAGO.
 Located 12 Miles W. of Lebanon.

SMITH DISTILLERY CO.
 Registered Distillery No 174
 5th Distr. Chicago, Marion Co. Ky.
 NO WATCHMAN; WARE CAPACITY 11 YEARS
 MASH CAPACITY 200 BUSNELS YIELD 320 GALS.
 POWER STEAM; FUEL COALS; LIGHTS CHANGES;
 STOVE IN OFFICE & YEAST ROOM.

MARY JANE BLAIR DISTILLERY CO.
 FORMERLY BLAIR, OSBORNE, & BALLARD.
 Registered Distillery No 17.
 5th Distr. Chicago, Marion Co. Ky.
 MASH CAPACITY 200 BUS. YIELD 440 GALS.
 RUN 5 MONTHS 3 YEARS; NO WATCHMAN; POWER STEAM;
 FUEL COALS; LIGHTS CHANGES; HEAT STORED IN OFFICE &
 YEAST ROOM; STEAM IN W. HO. EXCEPT 17.



At CHICAGO.
 Located 18 Miles W. of Lebanon
 NO EXPOSURE ANY SIDE

Map of Lebanon
 31 JUL 1905
 Library of Congress