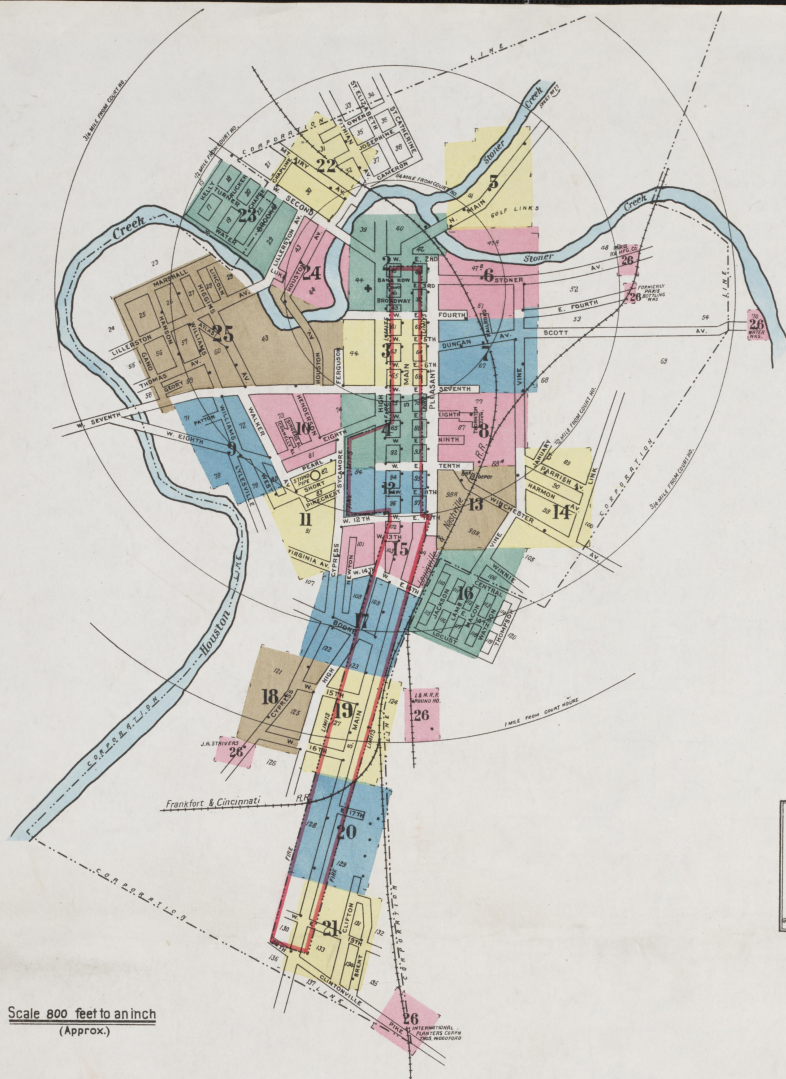


PARIS
Bourbon County
KENTUCKY
SANBORN MAP COMPANY
New York
MARCH 1926
Copyright 1926 by the Sanborn Map Co.



KEY
FIRE WALLS AND ROOF
SHEETS, ETC.
WOOD COFFERED
SHEETS, ETC.
FRAME PARTITION
SHEETS, ETC.
WINDING UP STAIRS
WINDING UP STAIRS
WINDING UP STAIRS

Population 11,000
Prevailing Winds, South West.
WATER FACILITIES:
Gality system of water works
owned by the Paris Water Co. Water supply from
Stoner Creek. Stand pipe of 250,000 galls capacity.

FIRE DEPARTMENT:
Fully paid. One chief, One
assistant chief, four men.
One fire station.
One American-LaFrance triple combination
auto truck with 750 gall pump, 35 gall chemical
tank, 200 ft 1 inch hose and 100 ft 2 1/2 inch hose.

NOTE:
Alternate house numbers are actual and are
these found upon buildings. If a means of
designation, two or more consecutive numbers
have been supplied to buildings not having actual
numbers.

Scale 800 feet to an inch
(Approx.)

INDEX

Table with columns for street names and corresponding lot numbers. Includes sections for A through Z and SPECIALS.

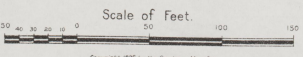
* Indicates only one side of Street shown.



Scale of Feet.
0 50 100 150

Copyright 1926 by the Sanborn Map Co.

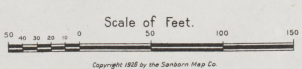
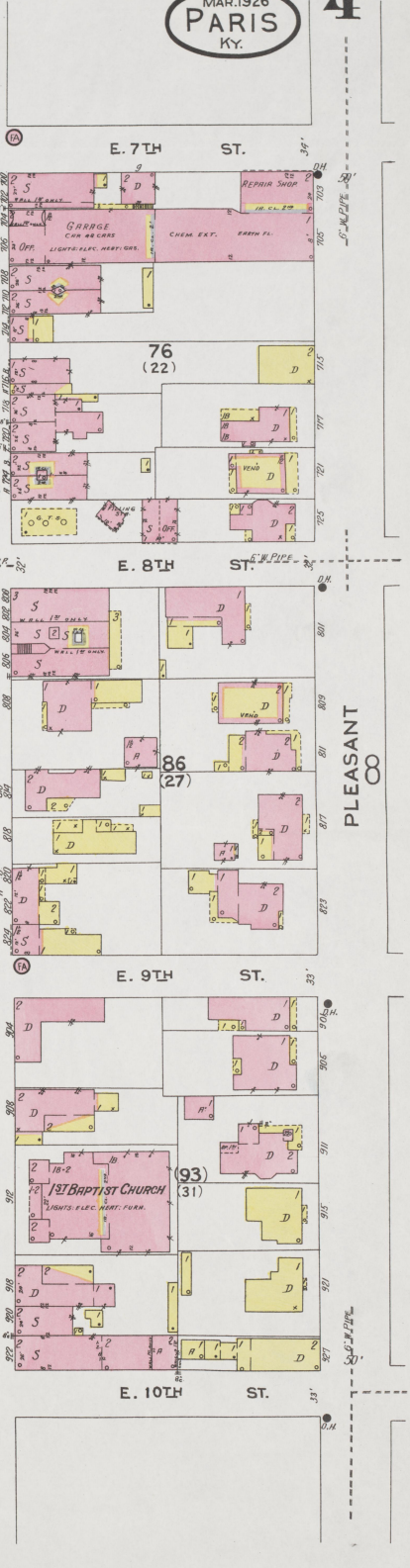
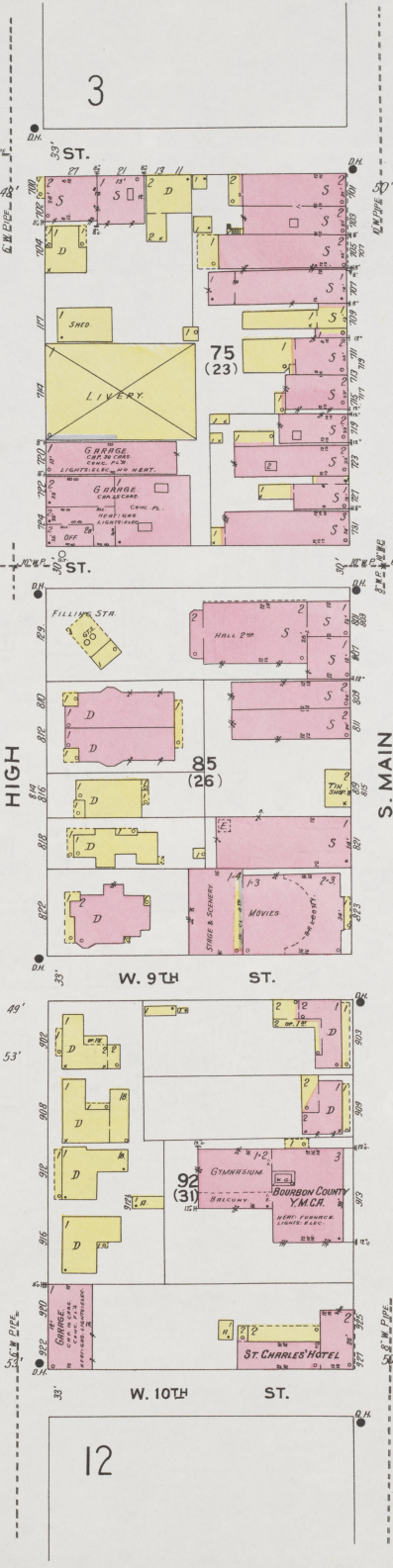
MAR 1926
PARIS
KY.



Scale of Feet.

Copyright 1926 by the Sanborn Map Co.

MAR. 1926
PARIS
KY.



5



5

MAR 1926
PARIS
KY

BOONSHAW COUNTY
PLATS 100 & 101

(2670)

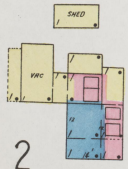
Stoner
Creek

41
(2A)

N. MAIN

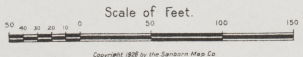
BRENT & CO INC
BLUE GRASS SEED & FEED
HEAT (SUDDER ONLY) GAS LIGHTS ELEC.
NO WATERWORKS. COLUMN 2 1/2 IN. DIAMETER
SPRINGING. AUTOMATIC SPRINKLERS. ONLY
SYSTEM. PAID BY DIRECT W. COMP. PRESSURE
30 LBS.

47 A
(214)



2

N. MAIN



Scale of Feet.

6

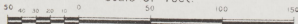
3/4



MAR. 1926
PARIS
 KY.

GOLF LINKS

Scale of Feet.



Copyright 1926 by the Sanborn Map Co.

PLEASANT

MAR 1926
PARIS
KY.



8

6

Scale of Feet.

Copyright 1926 by the Sandborn Map Co.

MAR 1926
PARIS
KY.

7

E. 7TH ST.

77
(21)



E. 8TH ST.

THORNTON DIV'N

THORNTON DIVISION

88A

4
PLEASANT

POST OFFICE

(28)

E. 9TH ST.

87

WAUSAU PL.

68
(18 1/2)

(29)

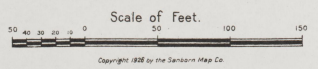
EMERGENCY OFFICE
L. & N. R. OFFICES

(34 1/2)

E. 10TH ST.

13

14



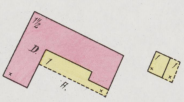
Copyright 1926 by the Sanborn Map Co.

DEPUSH PK

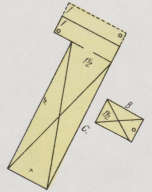
MAR. 1925
PARIS
Ky.



300' TO MARSHVILLE & LEADUNGTON PIKE



149



Located 1 Mile N. of Court Ho.

NO EXPOSURE ANY SIDE

Scale of Feet.
0 50 100 150

Copyright 1925 by the Sanborn Map Co.



Scale of Feet.
50 100 150
Copyright 1926 by the Sanborn Map Co.

MAR 1926
PARIS
KY.

(2670)



Scale of Feet
0 50 100 150

Copyright 1926 by the Sanborn Map Co.

13

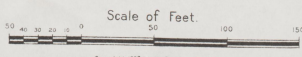
13

MAR. 1926
PARIS
KY.

KENTUCKY UTILITIES CO.

LIGHT & POWER, ELEC. I.E.P. SERV. GR.S.
NO WATCHMAN.

J. S. WILSON.
DEALER IN BLUE GRASS SEED
NO WATCHMAN, LIGHTS, ELEC. HEATING, POWER, STEAM, FUEL, COAL.



16

14

14

15

PLEASANT

E. 10TH ST.

E. 11TH ST.

E. 12TH ST.

8

88B

(34 1/2)

(34)

98A

(35)

WINCHESTER AV.

98 B
(34)

(37 1/2)

(GREEN) COAL TABLE

COAL PILE

PARISH AV.

VINE

VINE

EMPIRE

AV.

10'

14

68

89
(18 1/2)

PARRISH
AV.

90

HARMON
AV. (1A)

99

WINCHESTER
AV.

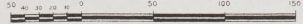
105
(2A)

LINK

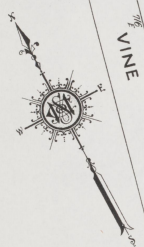
100

16

Scale of Feet.



Copyright 1926 by the Sanborn Map Co.



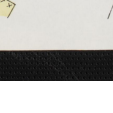
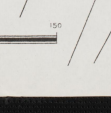
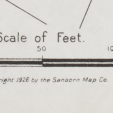
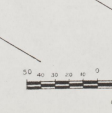
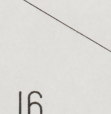
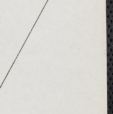
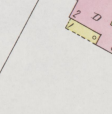
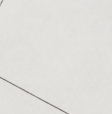
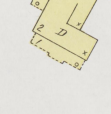
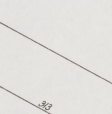
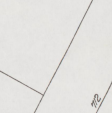
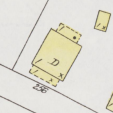
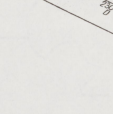
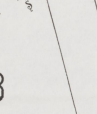
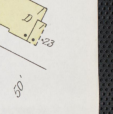
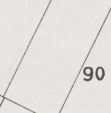
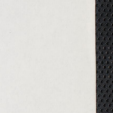
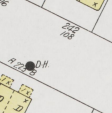
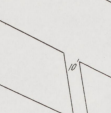
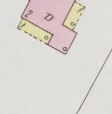
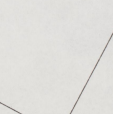
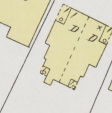
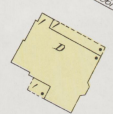
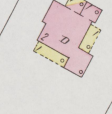
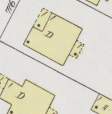
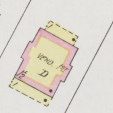
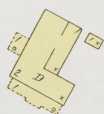
VINE

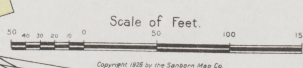
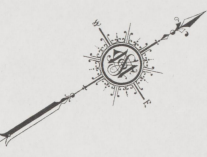
13

VINE

JANUARY
CT.

8





Copyright 1925 by the Sanborn Map Co.

16



(3670)

16

MAR 1926
PARIS
KY.

13

14

98B
(34)

105

WINNIE

106

VINE

CENTRAL

CHURCH OF GOD
BAPTIST
1887

110

(204)

111
(205)

112

113

114

JACKSON ST.

LAMB

E. 14TH ST.

MACDON

WATSON ST.

115

(207)

116
(206)

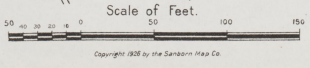
117

118

119

LOCUST

124



Copyright 1926 by the Sanborn Map Co.

(9670)

MAR. 1926
PARIS
KY.



17

17

18

19

CYPRESS

BOONE
HIGH

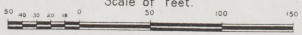
S. MAIN

NEW TOWN

CHURCH OF GOD
(CHURCH)

STANDARD OIL CO.

Scale of Feet.

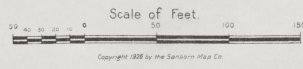


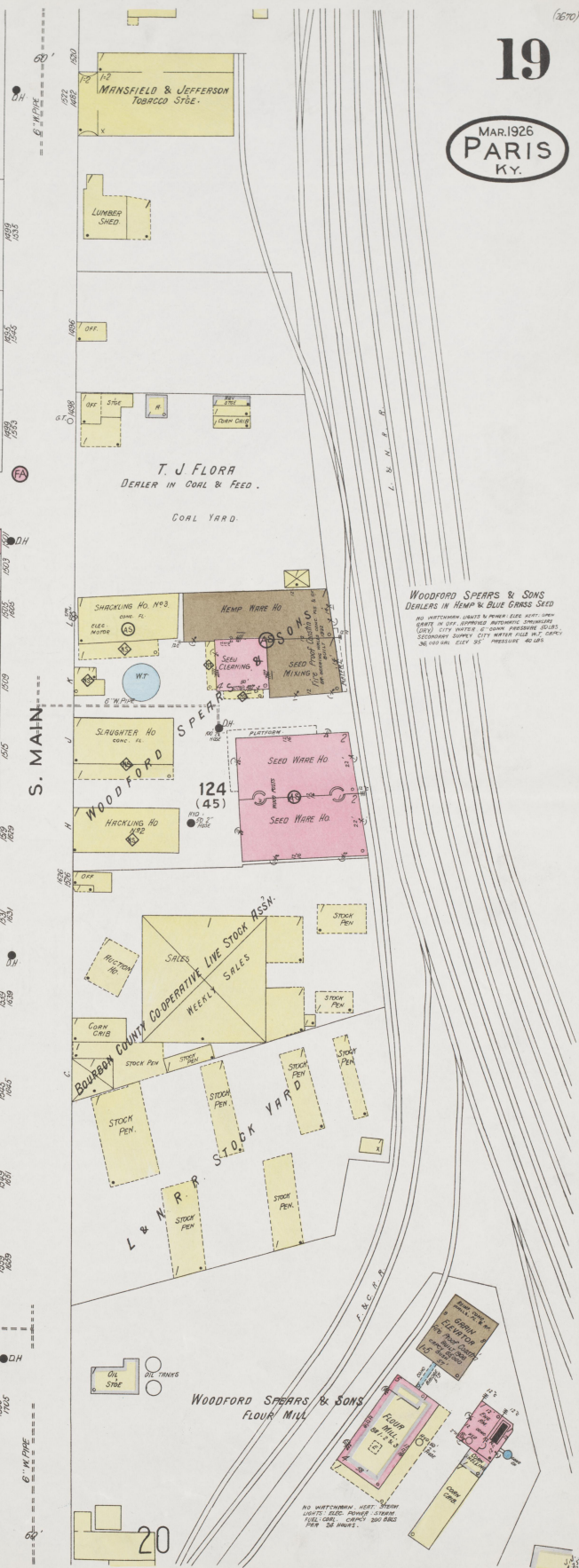
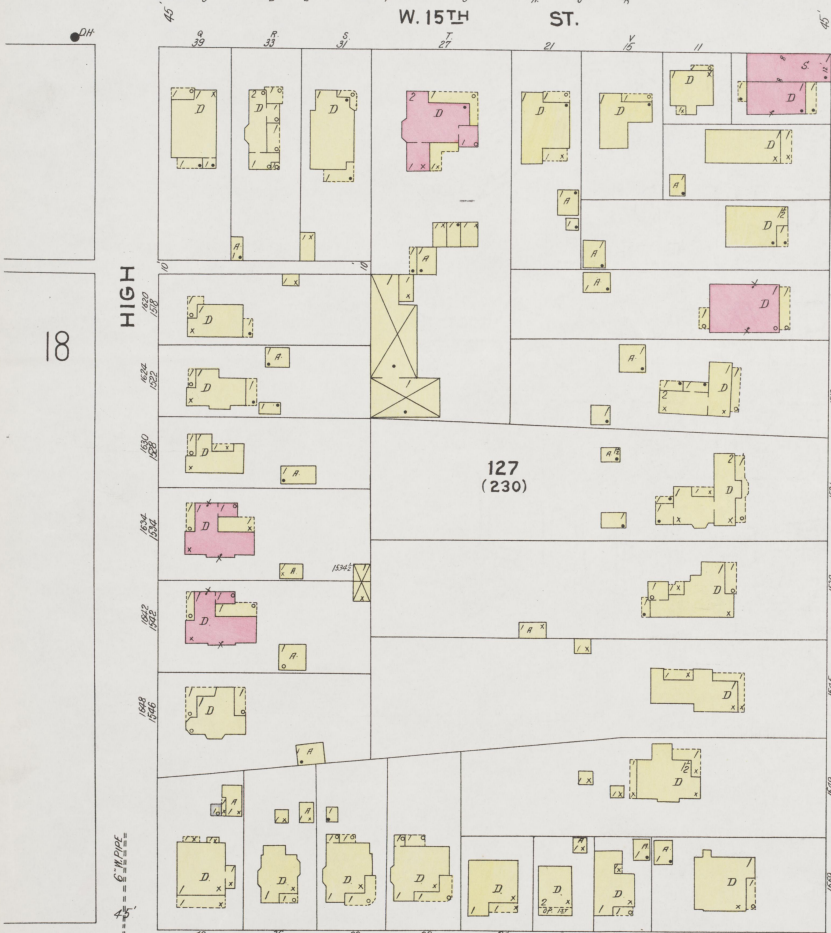
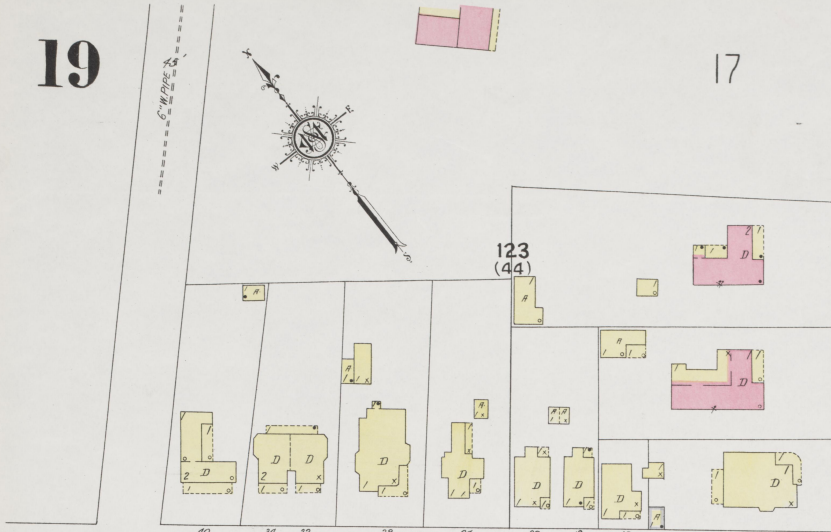
Copyright 1926 by the Sanborn Map Co.

16

66

MAR. 1926
PARIS
KY.



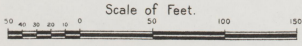


HIGH

S. MAIN

W. 15TH ST.

W. 16TH ST.



Copyright 1925 by the Sanborn Map Co.

21

21

MAR. 1926
PARIS
N.Y.



Scale of Feet.
0 20 40 60 80 100 120 140 160

Copyright 1926 by the Sanborn Map Co.

22

21
(201)

22

MAR. 1926
PARIS
KY.



Scale of Feet.

W. W. MASSIE HOSPITAL
LIGHTS - ELEC. - HEAT - STEAM

FRONTING ON CAMERON ST.

Copyright 1926 by the Sanborn Map Co

24

23

24

LILLERSTON AV.

MAR. 1926
PARIS
KY.

LUKES (AMPLEX)

43
(213)

22

ST.
W. 2 ND

HOUSTON AV.

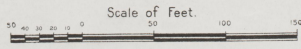
25

(213)

44

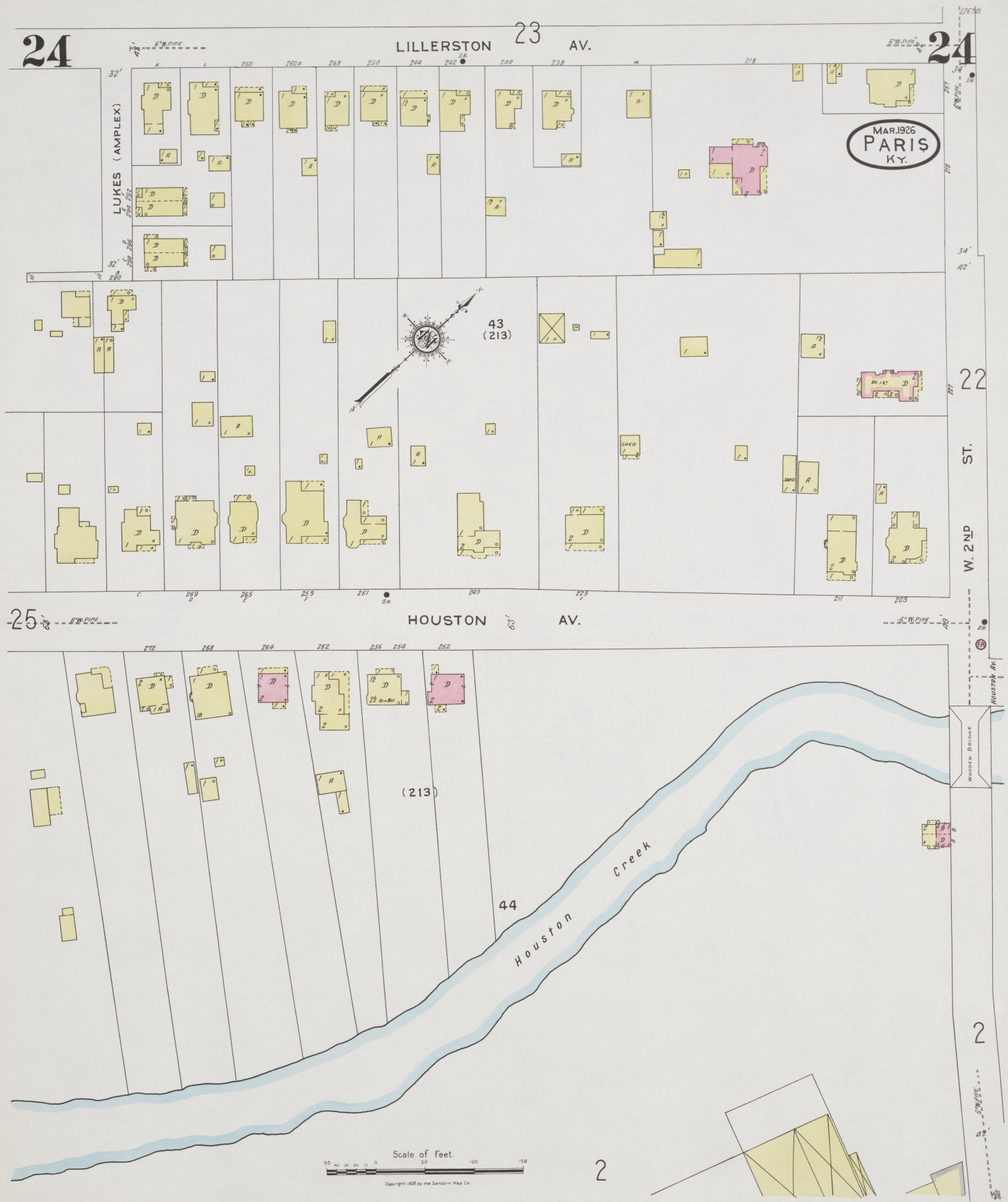
Houston
Creek

2



Copyright 1925 by the Sanson Map Co.

2



25

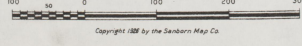
MAR 1926
PARIS
KY.

25

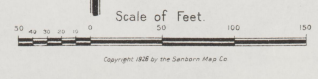
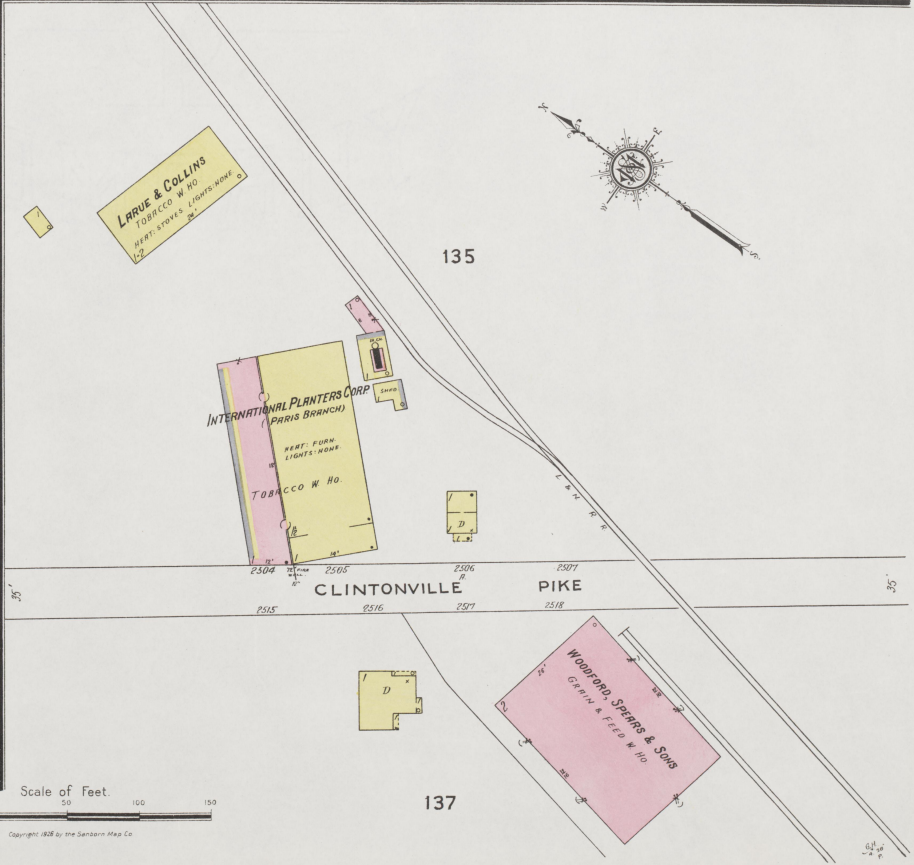
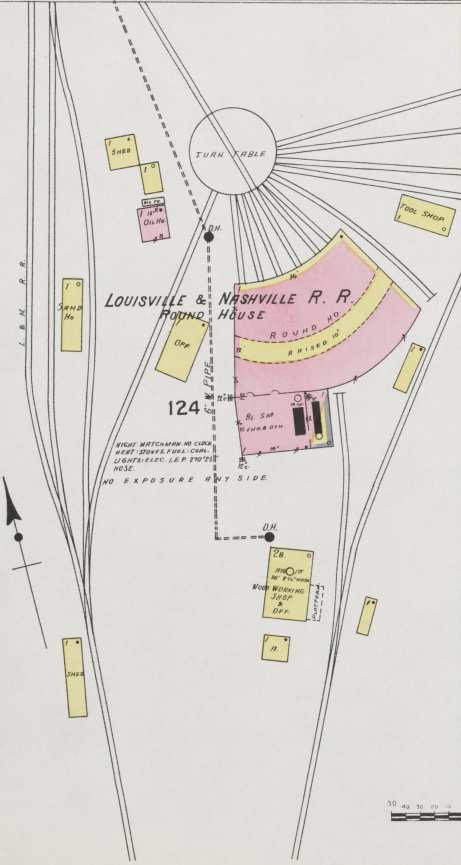
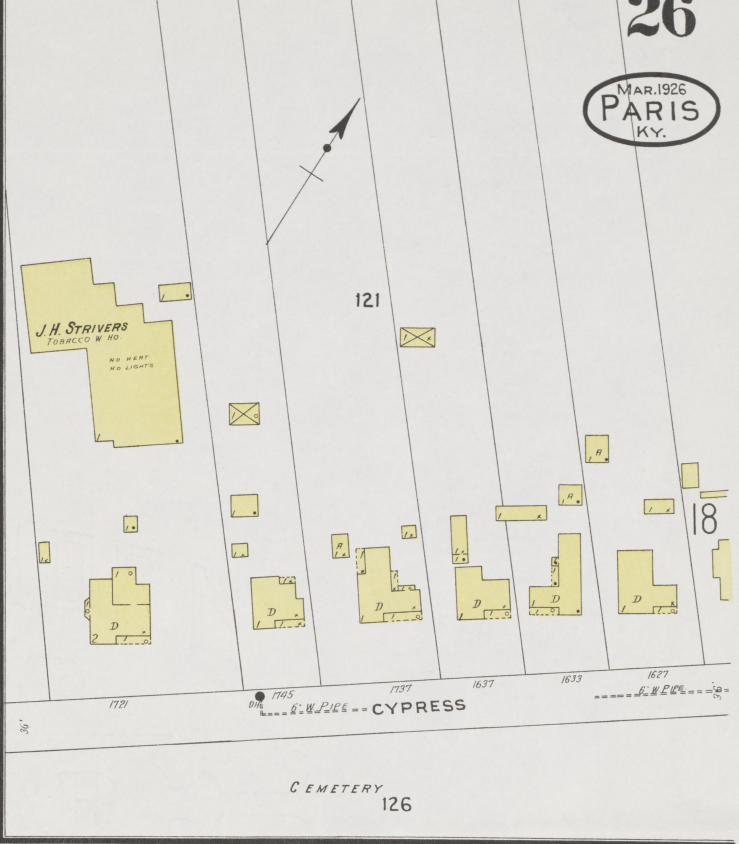
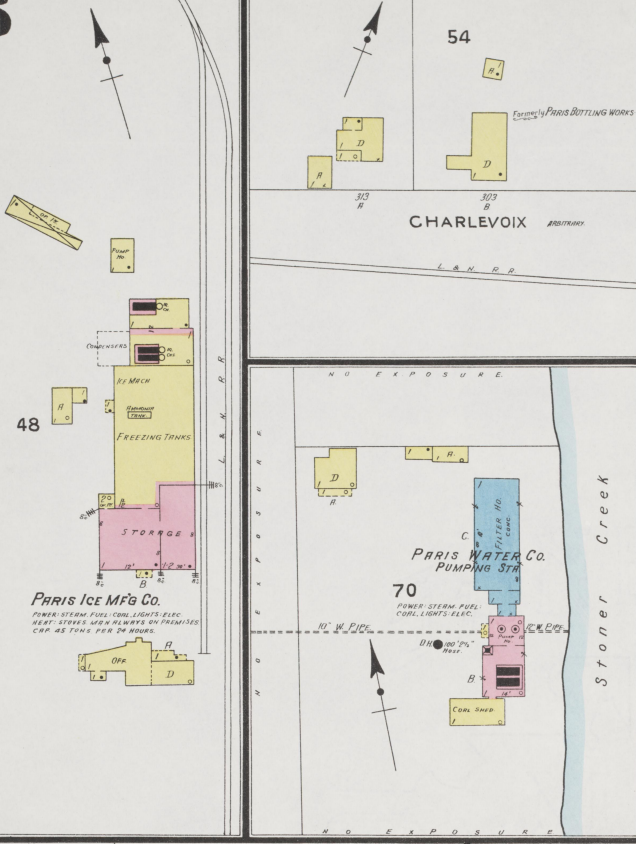
(P.70)



Scale 100 Ft. to One Inch.



Copyright 1926 by the Sanborn Map Co.



MAR 1926
PARIS
KY.

150

152

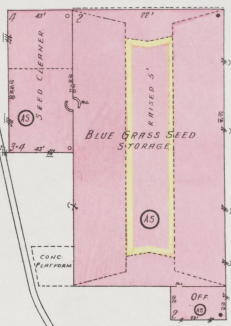
J.C. HOWARD
TOBACCO BARN

Located 1/2 Miles N. of Paris Court Ho.
NO EXPOSURE ANY SIDE

MT. CARMEL & SHAWHAN STATION
PIKE

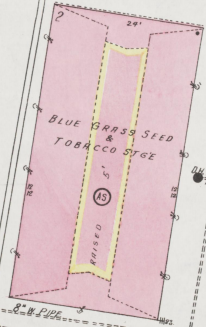
153

PARIS & N. MIDDLETOWN
PIKE

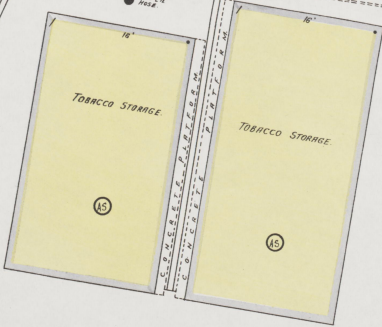


Located 1/2 Miles N.E. of Court Ho.
NO EXPOSURE ANY SIDE

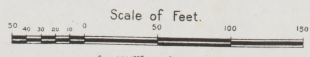
S P E A R S , K Y S E R C O .
G R A I N & S E E D



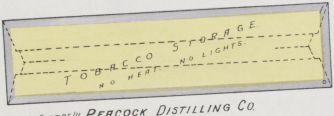
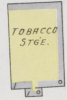
NO WATCHMAN LIGHT & POWER. ELEC. HERT. OPEN GRATE IN OFF.
RPD AUTO SPRINKLERS DRY SYSTEM. PRIMARY SUPPLY DIRECT
FROM CITY MAINS. SECONDARY SUPPLY FROM W.T. FILLED BY
CITY WATER. ONLY 5000 GALS. ELEV. 48' PRESSURE TRUCK
6' CONN. HYDS. & HOSE AS SHOWN.



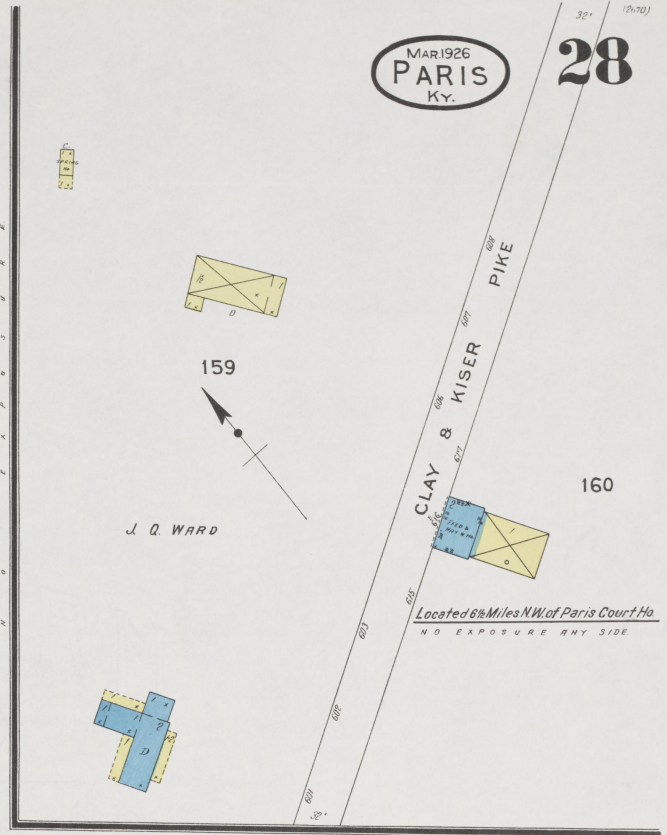
CISTERN



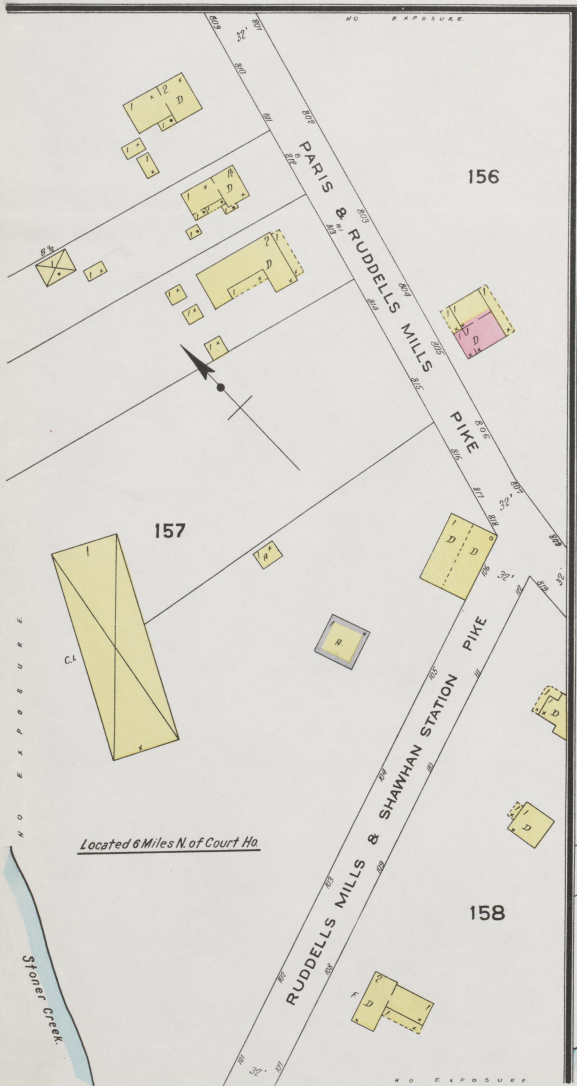
Copyright 1926 by the Sanborn Map Co.



Formerly PERCOCK DISTILLING CO.



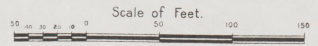
Located 6 1/2 Miles N.W. of Paris Court Ho.
NO EXPOSURE ANY SIDE



Located 6 Miles N. of Court Ho.



Located 5 Miles N. of Court Ho.



Copyright 1926 by the Sanborn Map Co.