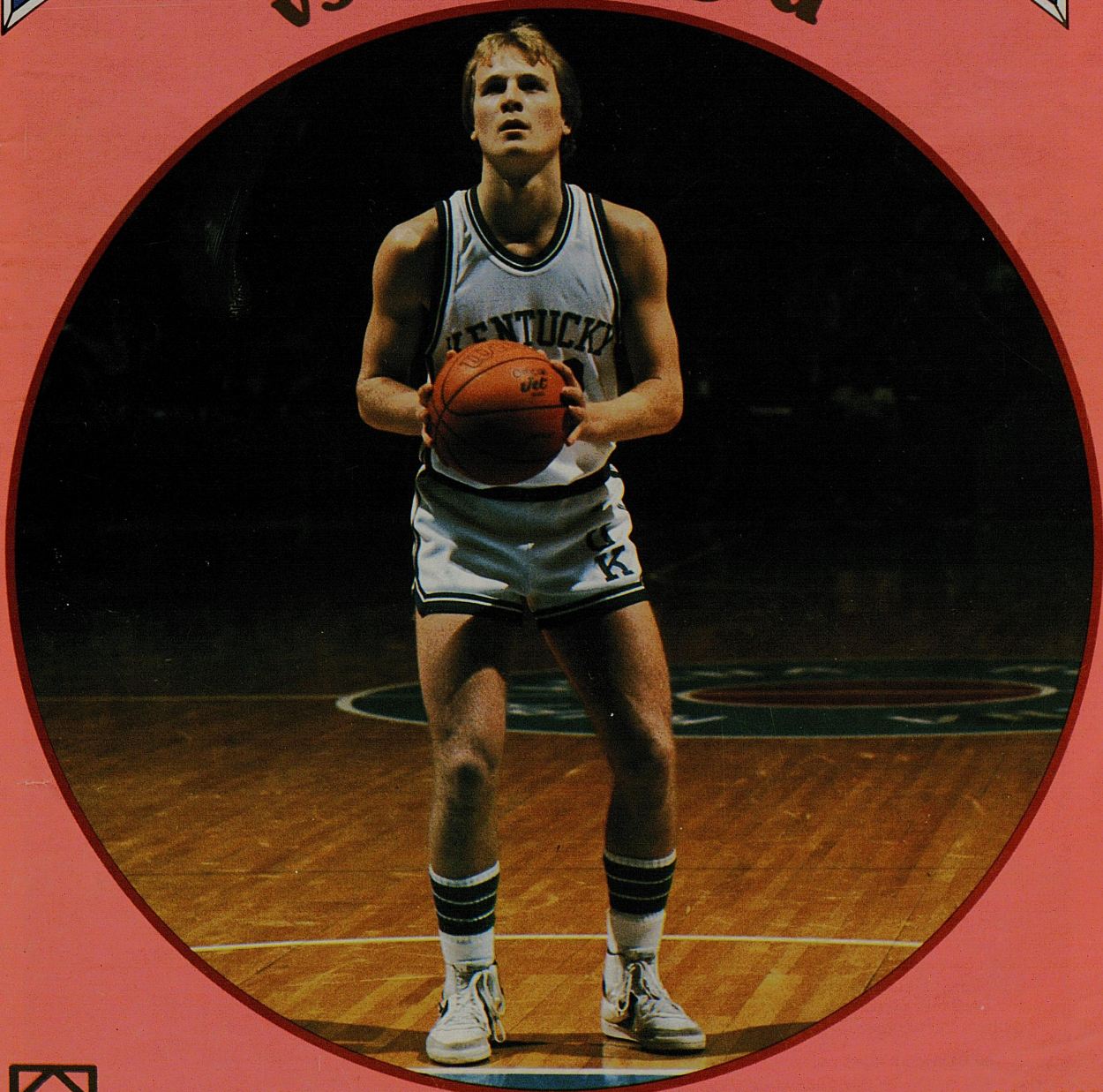


KENTUCKY

vs. Georgia



Souvenir Program \$1.75
RUPP ARENA

Feb. 26, 1983
Vol. 4, No. BB-15

"All we have of freedom—all we use or know—
This our fathers bought for us, long and long ago."
—Rudyard Kipling



This collage by New York artist Fred Otnes was especially commissioned by Brown & Williamson for its permanent collection of fine art works.

The freedom to choose our livelihood was provided to us long ago. And it was typified by the struggle of immigrants to America in the early 1800's. People like Adam Gimbel, a humble Jewish peddler from Germany, who later founded the country's first department store. And individuals who became industrial giants, like Andrew Carnegie from Scotland, who built one of the largest steel producing businesses in the United States. America had given both of them the freedom. The freedom to choose.

A free individual does not live without choice. A free society does not prosper without it. Consider, if you will, the personal

choices we make every day without intervention from others. Now consider how many we take for granted.

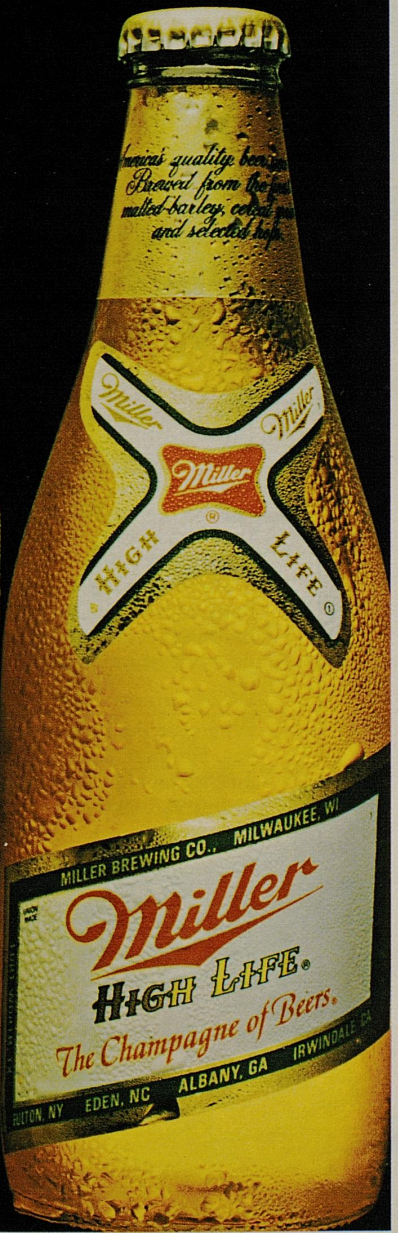
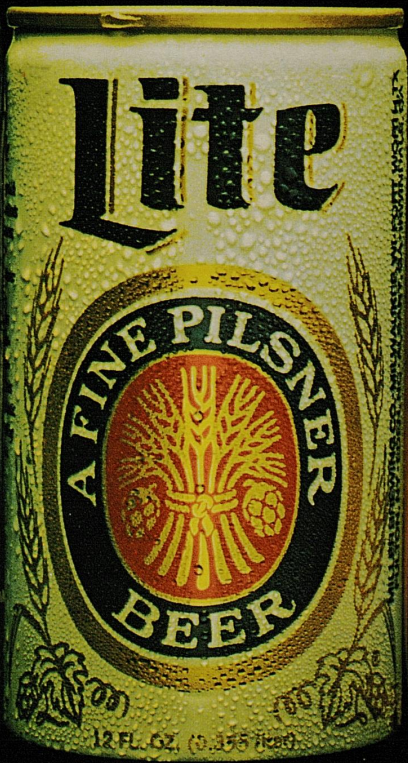
The right to choose is the basis of all freedom—political, social, artistic, economic, religious—for all people. But this right must be protected from those who would chip away at it...either deliberately for personal gain, or innocently for the "betterment" of humanity. It must be protected from those who would make *their* choice, *your* choice. These personal freedoms are our legacy as well as our responsibility...to protect and to pass on to those who follow.

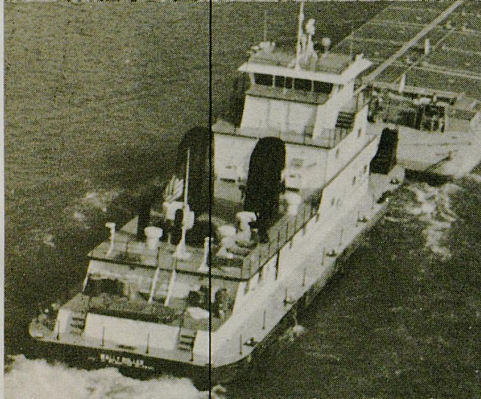
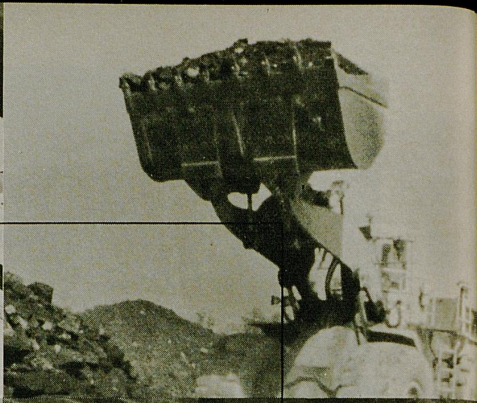
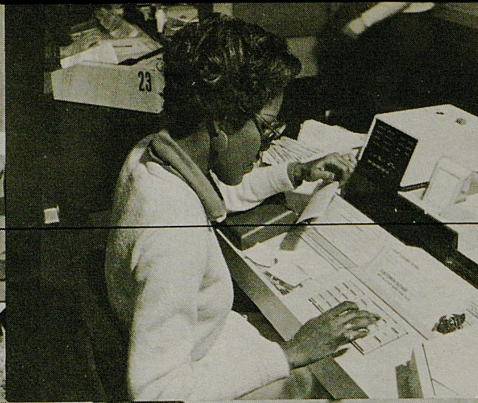
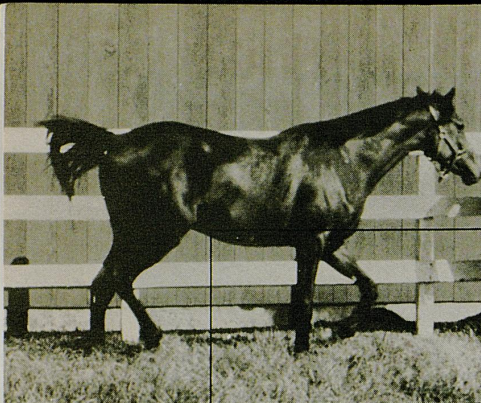
Freedom. It's a matter of choice.

Brown & Williamson Tobacco Corporation

© 1981 Beer Brewed by Miller Brewing Co., Milwaukee, Wis.

*The Miller Brewing Company
Uncompromised quality
since 1855.*





**WE'RE MORE THAN A KENTUCKY BUSINESS.
WE'RE IN THE BUSINESS OF KENTUCKY.**

We're in the business of making business profitable in Kentucky.

We're Citizens Fidelity Bank

We offer every commercial bank service and we're committed to personalizing those services to meet the financial needs of Kentucky businesses.

We're also the largest correspondent bank in the state, providing every modern banking service to Kentucky through a network of nearly 400 correspondents.

We're Citizens Fidelity Energy Company

Whatever the field of energy—coal, oil, gas, synthetic fuel or nuclear—we're putting technical know-how and capital resources together to make projects become realities.

We're Citizens Fidelity Equine Company

To meet the needs of a business that's vital to

Kentucky's economy, we're bringing specialized financial expertise to the thoroughbred and standardbred industries.

We're Citizens Fidelity Mortgage Company

We're the largest construction lender in Kentucky, with complete financial services ranging from land acquisition and development to permanent financing and property management.

We're Citizens Fidelity Leasing Corporation

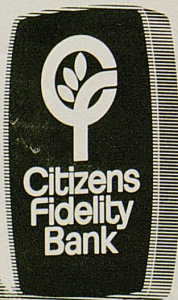
We're helping businesses in the Commonwealth profit from the cash flow and tax advantages of equipment leasing. Everything from medical equipment to locomotives.

We're Citizens Fidelity Corporation

All together, we have over \$2 billion in assets to benefit our state. We're a lot of things to a lot of people. We're in the business of Kentucky.

*In all the financial forest,
there's only one Service Tree.®*

Member FDIC



WILDCAT TROOP

CONTENTS

UK Coach Joe B. Hall	4
Tonight's Game	9
UK President, Athletics Director	12
UK Chancellors	13
Wildcat Feature	14-15
Around Campus	18-19
College Basketball Roundup	22
Wildcat Team Photo	25
Scorecard	41
Wildcat Scrapbook	50
Faces in the Crowd	54-55
Opponent Section	58-60
UK Statistics	64-65
Wildcat Greats of the Past	70-71

Published by
Host Communications, Inc.
Sports Division
120 Kentucky Avenue
Lexington, KY 40502
(606) 253-3230

Mark A. Dyer
Director of
Sports Publications

Dan Leal, Manager

Glenda Moore
Advertising Sales Staff

Russell Rice

Editorial Consultant

Photography: Bill Straus

Printing: The Thoroughbred

Press

Lexington, KY

Artists: Phil Bloomfield
Barb Van Wie

Our 86th Year

**JOE
ROSENBERG**

*Corner Upper and Vine
Lexington, Ky.*

**DIAMONDS
AND
OLD GOLD**

Bought & Sold

**Cliff
Hagan's**



RIBEYE

featuring
**"FRESH CUT
TO ORDER"**

**Top Choice
STEAKS**

Over 27 Different
Condiments in our
Open Salad Bar

Select Wines
& Cocktails
Available*

Potato and Bread
Bread Freshly Baked

**PRIVATE PARTY ROOMS
AVAILABLE FOR
CLUBS, ETC.**

- 941 Winchester Rd., Lex., Ky.
Ph: 253-0750
- Franklin Square Shopping Ctr.,
Frankfort, Ky. 227-2380
- I-75 Interchange, Berea, Ky.
Ph: 986-3639

*Not Available in Berea, Ky.



JOE B. HALL: A KENTUCKY THOROUGHBRED

Joe B. Hall's 10-year record establishes him as one of the finest coaches in college basketball.

While leading the Wildcats to a 22-8 record last year, Hall upped his UK record to 227-74, an average of 22.7 wins per season, to keep ahead of the pace set by his former coach, Adolph Rupp. Rupp averaged 21.5 victories per season over a 41-season span to become the winningest college basketball coach of all time.

One of the finest compliments Hall has received during his coaching career came from Rupp, who died in 1977.

"A good coach," Rupp said, "is a person who can take good material and win with it. Joe has done that."

Judging from Hall's coaching honors, Rupp was as usual, right on target with his evaluation.

Hall has won such honors as Kellogg's 1978 National "Coach of the Year," three Southeastern Conference "Coach of the Year" awards (1973, '75 and '78) and

nomination for Kodak's 1975, '76 and '78 (finalist) "Coach of the Year" awards.

"A good coach," Rupp said, "is a person who can take good material and win with it. Joe has done that."

In 1978 when Kentucky won its fifth NCAA title, Hall was also presented the Rupp Cup (presented to the SEC Coach of the Year by the Birmingham Tipoff Club) and Hall's most coveted personal award, the Dr. James Naismith "Peachbasket" award. The Peachbasket has previously been given to UCLA's John Wooden, Oklahoma State's Hank Iba, Kentucky's Rupp and Red Auerbach of the Boston Celtics.

The 1978 national champs, which had a 30-2 record, became the sixth Wildcat team to win 30 or more games, joining such illus-

trious company as the 1947 NIT runner-up (34-3), the 1948 Olympic Champions (36-3), the 1949 NCAA champions (32-2), the '51 NCAA champs (32-2) and the '66 NCAA runner-up (32-2).

The Hall Era has produced five All-Americans and seven All-Southeastern Conference players. Kevin Grevey, Jack Givens, Rick Robey, Kyle Macy and Sam Bowie were selected a total of 10 times.

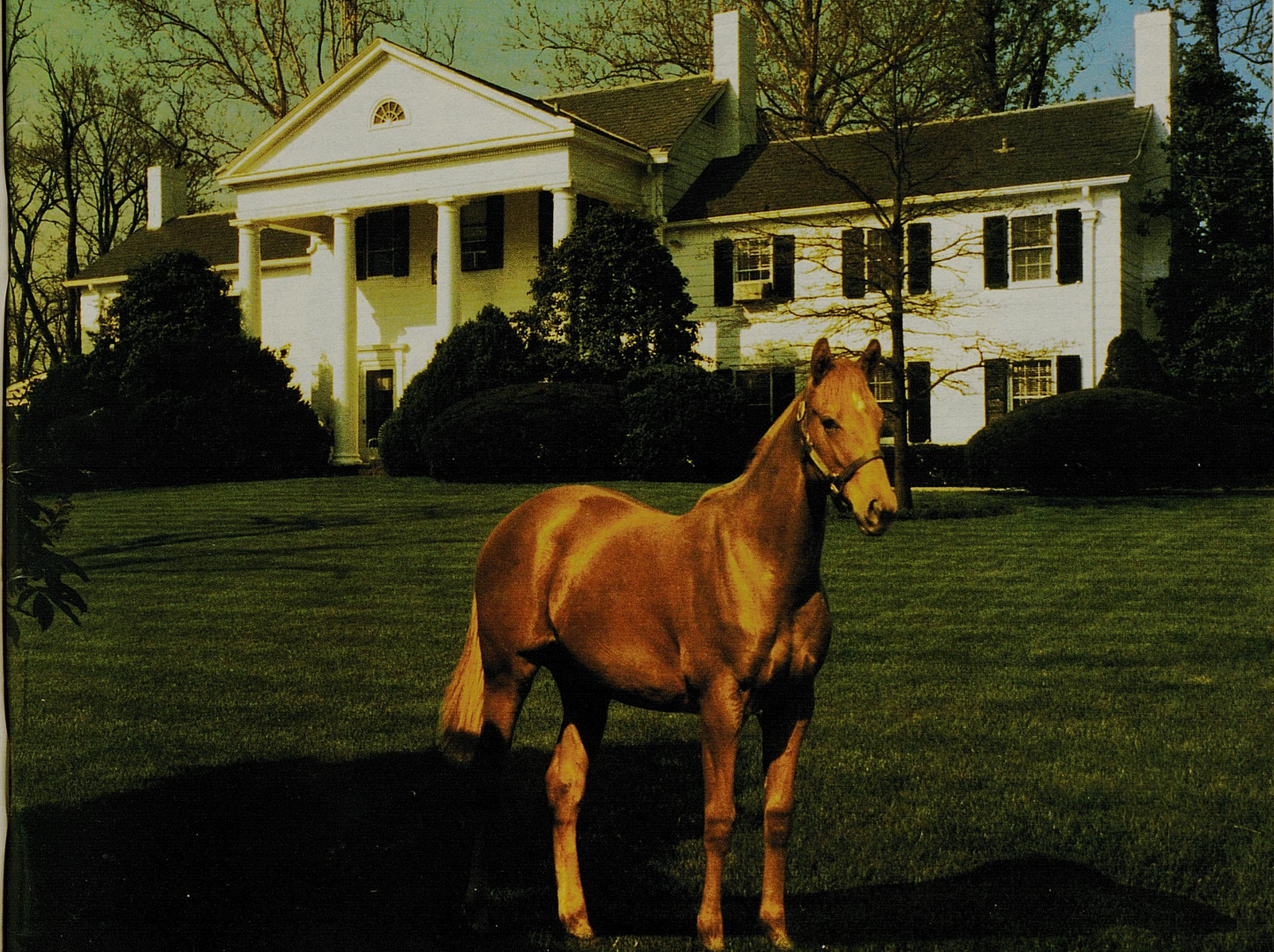
Hall began his tour as UK head coach in rather auspicious fashion in 1973, becoming the first rookie coach in league history to be designated Coach of the Year by his peers.

Gathering such honors has been one of Hall's trademarks during a career that began at Shepherdsville (Ky.) High School in 1956 and continued through Regis College before he returned to Kentucky, July 1, 1965, as an assistant to his former coach, Adolph Rupp.

An outstanding athlete at Cyn-

(Continued on page 6)

*Creating Athletes for
the Sport of Kings...*



LESLIE COMBS II
Spendthrift

Brownell Combs II P.O. Box 996, Lex., Ky. 40588 (606) 299-5271 Telex 218337

Affiliate
Affirmed
Al Nasr
Bends Me Mind
Big John Taylor
Blue Times
Bola Hour
Caro
Clem Pac
Coljak
Cornish Prince
Delta Oil
Dewan Keys
Exclusive Keys
Fairway Phantom
Gallant Man
Golden Man
Grey Ace
Hech Legion
Huguendo
J.O. Tobin
Jungle Savage
Kentucky Gold
List
Lord Avie
Magisterial
Marshua's Dancer
Nash and Bold
Native Royalty
Northern Joye
Orbit Dancer
Premier Ministe
Princely Native
Raise a Native
Seafire Slew
Sham
Silent Cal
Silfad
State Dinner
Triple Bend
Turn to Mars
Valdez
Wajima
Yukon

A Kentucky Thoroughbred . . .

(Continued from page 4)

thiana, Ky., Hall played freshman basketball and one year of varsity basketball in the "Fabulous Five" era at UK before transferring to the University of the South at Seawanee, Tenn., where he set a school single game scoring record and was considered by Coach Lon Varnell as the best player he ever coached.

After touring Europe with the Globetrotters in 1951, Hall returned to UK in 1955 to complete requirements for his B. A. and later received his M. A. at Colorado State University.



Returning to UK again in 1965 as assistant coach and head recruiter, he was instrumental in developing a running-conditioning program which obviously paid big dividends as the Wildcats capitalized on speed and endurance to advance to the championship game of the NCAA Final Four.

Hall became No. 1 varsity assistant and head freshman coach to Rupp after Harry C. Lancaster was named permanent athletics director Feb. 1, 1969. His record with the freshmen was 60-15, including a 22-0 season in 1971-72.

Hall's basketball reputation

stretches world-wide and has made him a much sought-after clinician and guest speaker. Last summer during the Wildcats' tour of the Orient, he conducted clinics in the Republic of China and in Hong Kong.

He was guest lecturer for the World Basketball Coaches Con-

gress in July of 1977 in the Canary Islands. Hall considers the chance to speak before some 400 coaches from the international set to have been one of his major coaching honors.

He was a member of the 1975 Olympic Basketball Committee and in 1972, he served under Hank Iba in the Olympic Trials at the Air Force Academy.

He is married to the former Katharine Dennis of Harrison County, Ky. They have three children—Mrs. Mike (Kathy) Summers, Mrs. Rick (Judy) Derrickson and Steve of Lexington.

DELICIOUS!



**This is Wildcat Country...
Arby's salutes
the University of Kentucky
Basketball Team!**

Hey Wildcat fans, start your pre-game warm ups at Arby's...join us for your victory celebrations! We're rallying with you all the way...so before and after your games, team up with Arby's.

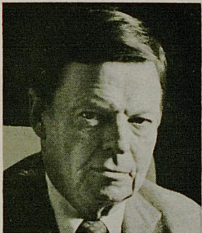
**At all participating
Lexington area Arby's**



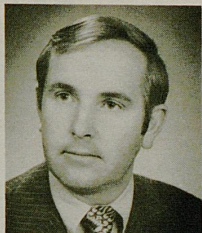
Ask me.

Get your coaching tips on life insurance from a pro.

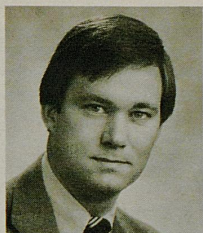
These are some of the many New York Life Agents in this area — all good people to know.



Joseph Argabrite
Lexington



Larry Botts, C.L.U.
Lexington



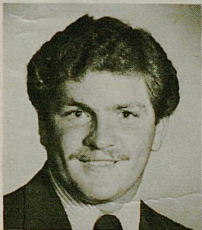
Bob Breeden
Lexington



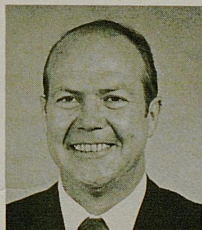
Ray Daugherty
Mount Sterling



Mike Fawbush
London



Mark Gardner
Frankfort



Jerry Kincaid
Lexington



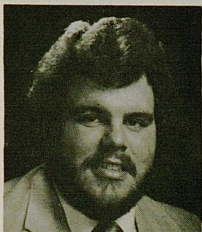
Chalmer Lindon
Hazard



Ellen Clark Marshall
Lexington



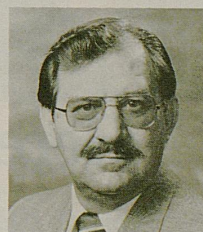
Doug Martin
Pike County



Darrell Patton
Prestonsburg



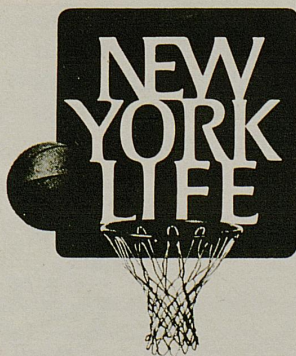
George Ridings, C.L.U.
Richmond



Paul Trautner
Lexington



Joe Williams
Lexington



Peter B. Crane
General Manager
200 West Vine, 6A
Lexington, Kentucky
254-2341

Go ahead, ask.

New York Life Insurance Company. Life, Group and Health Insurance, Annuities, Pension Plans.

There are a lot of reasons to shop at LeRoy's.

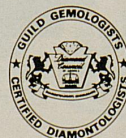


Here are 24 of them.

LeRoy's is proud to have 24 highly trained diamondologists and gemologists in our 11 Kentucky stores. Each is a professional who has been certified by the Diamond Council of America. So choosing that perfect diamond at an affordable price is easy at LeRoy's, where you'll find experts who can help make you a better diamond buyer. In fact we guarantee it, in writing with our 60-day money back guarantee. Whether you're buying an engagement ring or a gift for someone special, come and see all the other beautiful reasons to shop LeRoy's in Lexington at the Eastland Shopping Center, Fayette Mall, Lexington Mall and Turfland Mall.

You'll also find LeRoy's Jewelers in Frankfort, Louisville, Morehead, Richmond, Somerset and Winchester.

LeRoy's
Jewelers



Today's Game

KENTUCKY 18-5

SEC: 10-4

vs.

GEORGIA 17-7

SEC: 8-7

This afternoon's clash with experienced and talented Georgia is the front end of Kentucky's "weekend doubleheader," and the two games give the Wildcats the opportunity to maintain a firm grip on first place in the Southeastern Conference.

Georgia and Tennessee both will be a challenge. Both teams beat Kentucky on their home courts earlier in the season.

The Bulldogs staged a second-half rally to clip the Wildcats in Athens in late January. **James Banks** got hot from the outside and **Terry Fair** collected some key rebounds inside to spur the Dogs.

Size-wise, Kentucky matches up pretty well with Georgia. **Melvin Turpin** towers over Fair, 6-11 to 6-7, in the center battle. Coach **Hugh Durham's** strategy against Turpin will be one of the interesting indicators in the early going.

The Bulldogs have the height advantage at point guard where **Vern Fleming** lines up at 6-5, two inches taller than **Dirk Minniefield**.

Kentucky actually enjoyed a slight rebounding advantage in the earlier meeting with the Bulldogs at Athens, but turnovers swung the pendulum to Georgia. Kentucky committed 23 to Georgia's 15.

The Wildcats' depth situation at guard has been clouded by the knee injury of **Dicky Beal**. For several weeks now, Beal

has been able to do no better than a few moments on the court before limping back to the bench. Fortunately, freshman **Roger Harden** has steadily improved coming off the bench.



TERRY FAIR

Kentucky freshman **Kenny Walker** got a vote for best first-year man in the SEC from ESPN's **Dick Vitale** during Tuesday night's Tennessee-Auburn tele-

● **Roger Harden feature on page 14.**

● **Complete UK stats on page 64.**

cast. Vitale reported that Auburn coach **Sonny Smith** considered his Chuck Person the finest freshman in the league.

Walker's 18-rebound performance against Vanderbilt was impressive. The 6-8 Georgia Peach has excellent hands, which is so important for playing inside at both ends of the court.

The "Skywalker" is fired-up every time out but he should be especially ready for today's game with his home-state school. UK's "Sixth Man" will be a man to watch.

SERIES HISTORY: Kentucky holds a 66-10 advantage dating back to the first meeting in 1921. Georgia has won only once in Lexington—way back in 1923, 23-19.

The Bulldogs snapped a 12-game Kentucky win streak with their win last month.

LAST MEETING: (Jan. 29, 1983 at Athens)—Vern Fleming canned 17 points and James Banks added 15 as Georgia won, 70-63. The Bulldogs were outshot and outrebounded, but the Wildcats were guilty of eight more turnovers in the regionally televised contest.

PROBABLE LINEUPS

GEORGIA	HT.	PPG	RPG	POS.	KENTUCKY	HT.	PPG	RPG
10 VERN FLEMING, Jr.	6-5	16.1	4.1	G	10 DIRK MINNIEFIELD, Sr.	6-3	8.4	3.2
4 GERALD CROSBY, So.	6-1	10.1	1.3	G	20 JIM MASTER, Jr.	6-5	12.3	2.0
35 TERRY FAIR, Sr.	6-7	14.4	7.2	C	54 MELVIN TURPIN, Jr.	6-11	14.7	6.2
25 JAMES BANKS, Jr.	6-6	14.2	5.7	F	44 CHARLES HURT, Sr.	6-6	8.4	4.9
32 LAMAR HEARD, Sr.	6-5	6.8	6.4	F	32 DERRICK HORD, Sr.	6-6	11.1	3.9

Top Reserves: 20—Derrick Floyd (G, 6-3, Sr., 4.0 ppg, 1.0 rpg); 30—Donald Hartry (G, 6-2, Fr., 3.9 ppg, 0.9 rpg); 31—Richard Corhen (F-C, 6-6, So., 4.8 ppg, 3.4 rpg).

Top Reserves: 11—Dicky Beal (G, 5-11, Jr., 5.2 ppg, 1.5 rpg); 24—Bret Bearup (F-C, 6-9, So., 3.5 ppg, 2.1 rpg); 34—Kenny Walker (F-C, 6-8, Fr., 6.6 ppg, 4.7 rpg).

*Why do women
love to stop by*



Every visit is a warm and friendly adventure, as you enjoy the relaxed, homey atmosphere, attentive service, and freedom to browse at your leisure.

You'll also find our
Cappagallo
shoes, clothes and accessories on

SALE

right now! Do stop by before or after the game and bring your friends—our sale items will go quickly.

Join us for a Cappagallo adventure...

Cappagallo

Located downstairs, 2nd level
The Mall at Lexington Center
and in the
Lansdowne Shoppes

Assistant Coaches



LEONARD HAMILTON
Associate Coach

Leonard Hamilton was named UK's first associate basketball coach on Oct. 15, 1980.

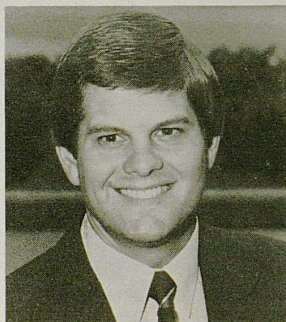
Hamilton has been a member of the Wildcat coaching staff for eight years. He came to Kentucky

after serving three years as an assistant coach at Austin Peay.

He has always been noted as an outstanding recruiter and as a defensive specialist. In 10 of the 11 years Leonard's been coaching, the team he has been associated with has advanced to post-season play.

A product of Gastonia, N. C., Hamilton lettered three years in football and two years in basketball in high school. He captained his basketball team for two years at Gastonia Community College, and also served as team captain at the University of Tennessee at Martin, where he graduated in 1970.

The 34-year-old Hamilton is married to the former Claudette Hale of McMoresville, Tenn. They have a son, Lenny, 13.



JOE DEAN
Assistant Coach

Enthusiastic, hard-working Joe Dean is in his sixth season with the University of Kentucky basketball program.

The Baton Rouge, La., native earned football and basketball letters at Baton Rouge High and played basketball at Mississippi State, making the 1976 Academic All-SEC squad.

Besides his duties associated with the Wildcat basketball team, Dean also serves as director of the annual Wildcat Coaching Clinic and the popular Joe B. Hall Wildcat Basketball Summer Camp.

He is married to the former Ellen Anger of Jackson, Miss. They have a son, Scott, 3.



BOB CHAMBERS
Assistant Coach

Bob Chambers, a respected high school coach in Tennessee prep circles for 20 years, is now in his third season with UK.

Prior to the 1979-80 season, Chambers coached nine years at Tennessee High in Bristol, Tenn., where he compiled a shining 228-68 mark and made three trips to the state playoffs.

Of his 20 total years in high school coaching, he spent 13 as a head coach. His overall record is 317-116.

He is married to the former Elva Jean Potter of Elizabethton, Tenn. They have a daughter, Robin Lea, 20, a student at UK and 18-year-old Chip.

Fayette Mall is the place for the Working Woman, Like Me!



Because I'm a working woman, I have precious little time to spend on shopping, and Fayette Mall understands. There are over 80 great stores including Sears, Stewarts, and Shillito's, full of quality products and the latest fashions all in one location. Fayette Mall is convenient to where I work and I always get fast, courteous service. And when I need a quick lunch or dinner, Fayette Mall has everything from salads to steaks. Reasonably priced too, just like everything else I find at Fayette Mall, the best products at the lowest possible cost. That's value. That's why Fayette Mall is the place for the working woman . . . like me.



Fayette Mall

Fayette Mall. It's the place for me. Over 80 great stores.
Nicholasville Road at New Circle Road. Lexington, Ky. 272-3493
Mon.-Sat. 10-9, Sun. 1-5

Administration

Dr. Otis A. Singletary, the eighth president of the University of Kentucky, assumed that office in August 1969. He had previously served as chancellor of the University of North Carolina at Greensboro, executive vice chancellor for academic affairs in the University of Texas System and director of the Job Corps for the Office of Economic Opportunity.

Dr. Singletary, a native of Gulfport, Miss., holds degrees from Millsaps College and Louisiana State University.

As president of the principal institution of higher learning in the Commonwealth, Dr. Singletary is greatly concerned with the University's role as a land-grant institution, a "people's university" accessible to all who can profit from education.

In the 13 years he has been president, the University has grown to where there are now about 23,000 students on the Lexington campus and about 22,000 students in UK's 13 community colleges, and the University has become one of the major research institutions in the country.

Great strides toward academic excellence have been made during Dr. Singletary's presidency at UK. Two professional schools—dentistry and pharmacy—have been ranked among the best in the nation. Departments such as political science, history and mathematics have gained national attention. The UK Library now ranks among the best in the Southeast, and a large portion of the world-wide research related to tobacco and health is now done at UK.

Under Dr. Singletary's guidance, strong efforts have been made to meet the needs of minority groups including the establishment of an office of vice chancellor for minority affairs.

Recognition of his service to the University was evidenced by the UK Alumni Association which presented to Dr. Singletary its Alumni Service Award—an honor rarely bestowed upon a non-alumnus of the University.

He and Mrs. Singletary, the former Gloria Walton, have three children: Bonnie, Scot and Kendall.



OTIS A. SINGLETARY
University President

UKAA Board of Directors

Faculty Members

Dean Marion E. McKenna
Dr. Daniel R. Reedy
Dr. N. J. Pisacano
Dr. Paul Sears
Dr. Charles Ellinger
Dr. Charles Roland

Trustee Members

Frank Ramsey, Jr.
William B. Sturgill
Members-at-large
Albert B. Chandler
S. T. Roach

Ex Officio Members

Dr. Otis A. Singletary, Chairman
Dr. R. G. Zumwinkle
Dr. Jack Blanton
Dr. Ray Hornback
Dr. W. L. Matthews
Dr. Art Gallaher
Steve Lochmuller

Alumni Members

Dr. Ralph Angelucci
Thomas P. Bell

Student Members

Wayne Houghland
Lynn Spoonamore

Athletics Director

Continued growth in practically all phases of UK athletics has been a hallmark of Cliff Hagan's seven-year reign as Wildcat athletics director, with fine attendance at football and basketball games, increased attendance at Lady Kat basketball and men's baseball, and a steady up-grading of facilities.

Recent physical improvements include a new baseball grandstand behind home plate, a new athletic learning center for the academic advisory staff, new locker rooms in the football dressing rooms and construction of a new equipment shed for track.

On the institutional side of the ledger, the University was host

to both the men's and women's Southeastern Conference basketball tournaments earlier this year and will host the NCAA Mideast Regionals in 1984 and the NCAA Championship Finals in 1985.

Hagan, who has seen and overseen vast improvements in all phases of the UK athletics program since returning to his alma mater as assistant athletics director in 1972, has under his command a total of 20 sports ranging from football and men's basketball in Level I, to women's basketball in Level II, and 17 sports in Level III.

On the personal side, Hagan received one of his highest individual honors in 1978 when he



CLIFFORD O. HAGAN

became the first University of Kentucky basketball player to be installed in the Naismith Memorial National Basketball Hall of Fame in Springfield, Mass.

He is married to the former Martha Milton of Owensboro. They have four children: Mrs. Barry "Lisa" Thaxton of Lexington, Mrs. Jim "Laurie" Hill of West Liberty, and Amy and Kip, both of Lexington.

UK Chancellors



PETER BOSOMWORTH
Medical Center

Dr. Peter Bosomworth, vice president of the Albert B. Chandler Medical Center since 1970, was named chancellor of the center when a major reorganization of the University was completed in August.



ART GALLAHER
Lexington Campus

Dr. Art Gallaher is chancellor of the Lexington campus in the University of Kentucky system. Dr. Gallaher came to UK in 1963 as chairman of the UK anthropology department and in 1972, he was named dean of the College of Arts and Sciences.



CHARLES WETHINGTON
UK Community College System

Dr. Charles Wethington became vice president of the UK Community College System in 1980 and is now chancellor of the system. Dr. Wethington began his UK career in 1964 as an instructor of educational psychology.

After the game
"adjourn" to
Spirits
a uniquely
special kind of meeting place—
at the
RADISSON PLAZA
LEXINGTON
Across from Rupp Arena
Great entertainment—
even BETTER drink prices!
NO COVER/NO MINIMUM

OH WHAT A FEELING!

Sales
Service
Parts

TERCEL 4WD 5-DOOR SR5 WAGON

Toyota of Lexington, Inc.

630 New Circle Road
Lexington, Kentucky 40505
254-5751

Hustling Harden Making Co

By DAN METZGER

He dribbles behind his back and between his legs as if it were an inborn instinct. His behind-the-back passes are done as safely as conventional passes.

UK freshman Harden says he couldn't be happier with his life at Kentucky and the dribbling and passing are "just part of my game."

"I'm very happy to be here," Harden says. "I couldn't be happier with everything—my social life and playing time on the floor."

The behind-the-back pass on a fast break against Vanderbilt awed the Rupp Arena crowd, but Harden says he is comfortable with the pass.

"It's part of my game," said the political science major. "It's nothing I try to do to gain personal attention—it's something I've done all my life."

"In high school people thought I was putting on a sideshow to the game, but Coach Hall has been receptive to how I play."

Harden spent much of the early season on the bench, until he received his opportunity to play when Dicky Beal injured his knee. He realized he had three experienced guards in front of him, but still envisioned playing time.

"It's natural to expect a lot of playing time coming in as a freshman," the 6-1 guard said. "But my playing was justified."

Harden credits his father, Al, and his brother Rob in his development as a basketball player. Rob played at Florida last year before transferring to Valparaiso University.

"My father never got me out in the backyard. He never pushed me into playing basketball. But on the other side of the coin, he would help me out if I asked."

Indiana's "Mr. Basketball" last season has made a trademark as an excellent passer, but has experienced difficulty in his shooting. He claims he has as much confidence in one as the other, though the shooting statistics

may seem to contradict his claim.

"It doesn't bother me," he says of his shooting difficulty. "My shot's going to come. I have to make the defense respect me offensively, but that doesn't mean I have to score."

UK head coach Joe B. Hall said Harden had a difficult time adjusting to college ball, but says he is "a sound shooter."

When Harden entered the Kentucky lineup in the first half against Mississippi State, many were surprised to see him drawing the defensive assignment on Bulldog standout Jeff Malone. Malone, three inches taller and older than Harden is the SEC's leading scorer.

That game may stand out in the Kentucky fans' minds to Roger



Harden has some nifty moves around the basket.

g Contribution To 'Cats

Harden's capabilities. Holding Malone to nine first half points was instrumental in the Cats' 88-67 win, and proved to be a confidence builder to Harden.

"It did a lot for me, especially for my defensive confidence," he said.

Practicing everyday against Dirk Minniefield, Dicky Beal and Jim Master has enabled Harden

"It doesn't bother me," he says of his shooting difficulty. "My shot's going to come. I have to make the defense respect me offensively, but that doesn't mean I have to score."

to improve areas of his game, and prepared him for game situations, but it has also been a frustrating experience.

"I don't know if it was a mental thing. I always knew I could play on this level of competition," he said. "Playing against Dirk, Dicky and Jim was like running into a brick wall. I had difficulty getting the ball inbounds, over half-court and getting my shot off."

"I'm not going to face anything or anybody I haven't played in practice. I won't face a better athlete than Dirk Minniefield someone quicker than Dicky or a better outside shooter than Jim."

Through all this, the Valparaiso, Ind., native sees a parallel in mental and physical preparation. "I could have corrected the physical part with the mental."

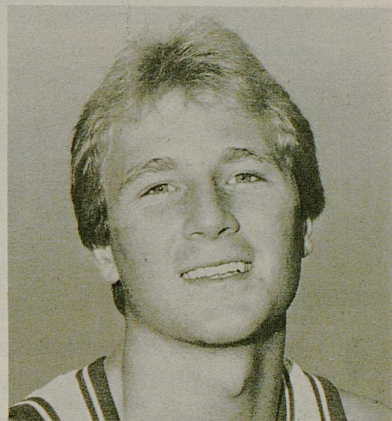
Recent Kentucky victories have been credited to a aggressive defense, and Harden says the same will have to hold true if the Cats are to avenge an earlier season loss today against Georgia.

"We have to come out and establish the defensive tempo and come in with the right, winning, mental attitude. We have to come and play."

If the Cats continue to play to their potential, and control the

tempo of the game on both ends of the court, Harden thinks highly of the team's fortunes this season.

"I think we're just playing aggressively," he said, "we don't have to worry that much what somebody is going to do against us."



ROGER HARDEN

HARBOR FREIGHT SALVAGE COMPANY'S

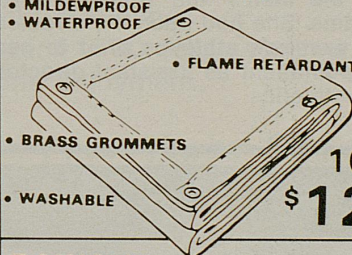
TOOL WAREHOUSE

Big Blue Special

TARPS

- MEETS ALL OSHA REQUIREMENTS
- REINFORCED POLYETHYLENE
- MILDEWPROOF
- WATERPROOF

Available in
Blue or Orange



• FLAME RETARDANT

8 x 10

\$9.00

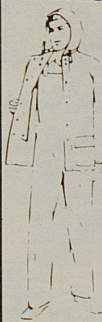
• BRASS GROMMETS

10 x 12

\$12.00

• WASHABLE

RAINSUIT

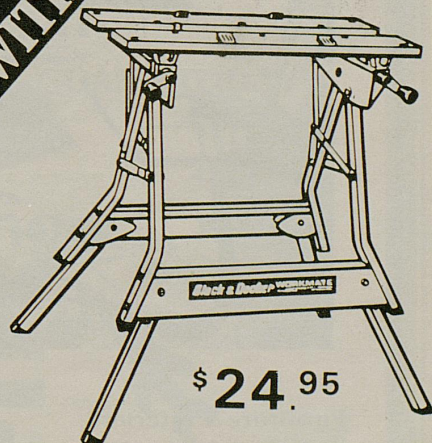


Now Available
in Wildcat Blue

- 100% Water-proof
- Fully Lined

10.95

BLACK & DECKER WORKMATE



Wt. 18 lbs.
Ht. 27 3/4"

\$24.95



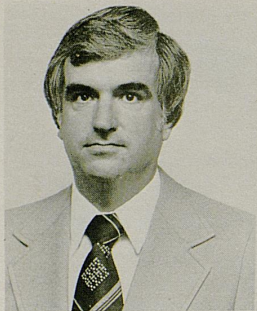
1387 NEW CIRCLE RD., N.E.

MON. - FRI.
8:30-6:00

Lexington, KY 40505
(606) 253-0148



SAT.
9:00-5:00



LARRY IVY

LARRY IVY
Asst. Director of Athletics
for Finance

Larry is involved primarily with the administration and management of the business operations of the athletics department. He joined the athletics department in 1976 and he came to UK in 1969 as director of housing.

A native of Huntsville, Ala., Ivy earned his bachelor's and master's degrees from the University of Alabama. He and wife Barbara have one daughter, Kim.

FRANK HAM

Asst. Director of Athletics

Frank came to the University in 1968 as administrative assist-



FRANK HAM

ant to football coach John Ray, and was reassigned to the athletic director's staff in 1972. He became assistant athletics director soon after Cliff Hagan succeeded Harry C. Lancaster as athletics director.

Ham and wife Rosemary are both from Niles, Mich.

SUE FEAMSTER

Asst. Director of Athletics

Sue joined the athletics association in 1978 with the merger of the men's and women's programs. She had been the director of women's athletics prior to her appointment as assistant director of athletics.



SUE FEAMSTER

A product of Frankfort, Feamster came to UK as a grad student in 1970 and was named assistant director of campus recreation in 1972 and women's athletics director in 1974.

BOB BRADLEY

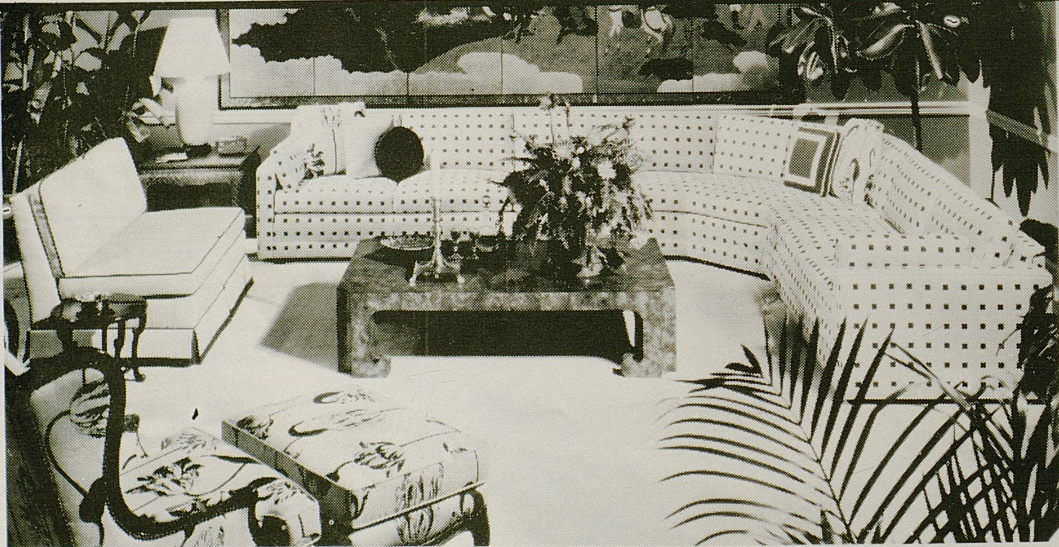
Assistant Director of Athletics
for Academic Affairs

Bob Bradley came to UK in 1971 to pursue a master's degree in education psychology and counseling.

He served as coordinator of career counseling and director of financial aid for the Lexington Technical Institute before joining the Athletics Association in 1977.



BOB BRADLEY



Furniture & Interiors
by Heinsmith
A discerning investment
in quality

Heinsmith

868 East High St.
Chevy Chase Place
Lexington, Ky. 40502
(606) 269-7339

Do you need financial help with your college education?

**If so . . . The Kentucky Air National Guard has
good news for you.**

The Kentucky Air National Guard is one of the best ways that you'll find to help finance a college degree. The following are just a few of the many benefits that can be yours for working only two days a month and fifteen days annual training a year.

- Obtain up to 50% tuition assistance to attend any college, university, vocational school or accredited proprietary school within the state of Kentucky.
- Enlistment bonus or tuition grant for non-prior service persons only for selected career fields when available, up to \$4000 in tuition assistance.
- Part-time employment while attending college, only 16 hours per month and two weeks during the summer.
- Opportunity to earn over \$1500 dollars per year to use toward your education or for your personal enjoyment.

Don't let this opportunity pass you by. Set your sights high with today's Air National Guard.

On, on U of K and Go Big Blue, continue to be a part of a winning tradition with the best Air National Guard unit in the nation — The Kentucky Air National Guard — The Fighting Phantoms and The Fighting Wildcats — what a team!!!

**CONTACT THE KENTUCKY AIR NATIONAL GUARD TODAY!
(502) 566-9424**

The Guard belongs.



Campbell House Inn

We take special pride in providing the finest in services . . . for your stay in Lexington during UK sporting events . . . for after-game dining and entertainment . . . for anytime you and your guests require the finest!

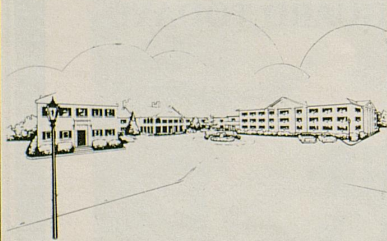
•
Over 300 rooms

•
New jacuzzi suites

•
Biggest line-up
of entertainment
in town

•
The finest in
dining service

•
Dancing in our lounge



The Campbell House Inn

1375 Harrodsburg Road
Lexington, Kentucky
(606) 255-4281

Toll Free—KY: 800-432-9254
Other States: (800) 354-9235

Around

By PAM FAHEY
UK Information Services

Beginning with the fall 1983 semester, the University of Kentucky's masters degree program in business administration will become more accessible to students without business undergraduate degrees.

The change was announced by UK College of Business and Economics Dean Richard Furst who said the restructuring reflects the university's overall move toward excellence in the MBA program.

Furst explained there will be only nine semester hours (three courses) as prerequisites to the MBA program compared to the former 30-hour prerequisite.

The new program, Furst says, will provide all its training at the graduate, not undergraduate, level (the new program will require 48 graduate hours compared to 30 in the old program). Without attending summer school, the program—similar to others throughout the country—will be a two-year program. Students enrolled will receive a "more comprehensive level of training and will take courses with their peers," Furst says.

The university sought to upgrade the MBA program to make it competitive with other, quality programs in the nation, Furst says. The business community has been very receptive to the changes, he adds. Many businesses which had ceased recruiting MBAs on the UK campus have told the dean they will resume recruiting here when the new program is instituted.

The new program, Furst adds, "may not be as accessible as the old program since we will enforce certain course sequences. But, you can't have complete accessibility and quality. I would rather sacrifice accessibility for quality."

The new program may limit the number of majors, Furst says, but it will "give priority to our

strengths and to what the business community wants." One of the new majors will be in banking and financial services. This will be "enhanced by our endowed chair in that area," he says.

There also will be a new scholarship program available to the MBA students. These will be scholarship-intern programs financed by Kentucky businesses.

The university sought to upgrade the MBA program to make it competitive with other quality programs in the nation, Furst says. The business community has been very receptive to the changes, he adds.

While the program will offer a limited number of majors, there is built into it a "controlled flexibility," says Clyde Irwin, director of the MBA program. For instance, the new program allows for nine hours of electives. Irwin says they may be taken in approved areas. For example, students have already indicated an interest in including computer science or engineering courses in this area.

Allowing for this specialized flexibility will make the MBA program more receptive to the students' needs, Irwin says.

The changeover from the old program to the new, 48-hour program, won't come without some problems. To accommodate those students currently enrolled in the program, the university will work with them to make sure their needs are met. Also, for students admitted to the degree program for the fall 1983, but who were already taking the 30 hours of prerequisites for the old MBA program, their course load for the MBA will be reduced to 39 hours. Another three-hour reduction will be allowed if one of the courses taken in the prerequisites was



Campus

Business Administration 439.

Admission requirements for the new program include graduation from a four-year, accredited college or university; an overall gradepoint average of 2.5 on a 4.0 scale; a score of 450 or better on the Graduate Management Admission Test (GMAT), and the formula (200 times the gradepoint average plus the GMAT score must total at least 1050).

The three prerequisite courses are two accounting courses and a calculus course.

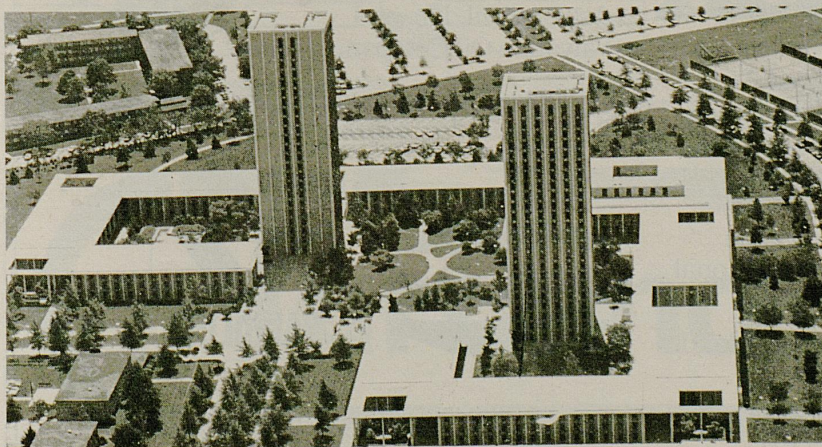
The new program also will offer many courses at night, Irwin says, to help educate those students who cannot attend full-time, daytime classes. The only stipulation here, he adds, is that they maintain a course load of at least two courses per semester.

All students in the new program will be admitted in the fall only. Whereas in the past students could start the program anytime during the school year, now they will begin only in fall.

Furst says, "The college has the faculty to offer a quality MBA and now we have the program to fit the quality of our faculty."



Dr. Richard Furst



Blanding-Kirwan Complex.

Come See Lexington's First Sport Court

Offering 15 games

- Racquetball
- Paddle Tennis
- Wacketball
- Badminton
- Pickleball
- Volleyball
- Shuffleboard
- Basketball
- Etc. etc. etc.

BEAUTIFUL HOMES "WITH CABLE TV"

These apartments are so plush & private, it's almost like having your own home.

Huge apartments, each with individualized entrance and solid, soundproofed construction. Lush landscaping and extensive recreational facilities make it the natural choice for single or family living!

On Tates Creek Rd., just west of New Circle
No pets, please 273-5500

ROLLING RIDGE

WE HAVE A GAME PLAN!



At Ashland and Valvoline, we recognize the need to develop a game plan to get the jump on competition and stay ahead.

In our business as in sports, we look to competitive spirit and teamwork as vital links in the drive to success and future growth.

Each day we begin a renewed dedication to practice the main fundamentals in the game of business. . . to provide our customers with the best possible products in the most cost-effective manner. Our customers are the bricks of the foundation upon which our exceptional growth has been built.

Like the Kentucky Wildcats, Ashland

and Valvoline have developed a winning tradition over the years. And as we approach each new "season", we realize that the battle to win will be tough. But we are ready for the challenge.

Ashland Oil, Inc. and
Valvoline Oil Company.

We have a winning game plan.





THERE'S
SOMETHING
FOR
EVERYONE
AT

Blue Boar
CAFETERIAS

TURFLAND MALL

MONDAY thru SATURDAY

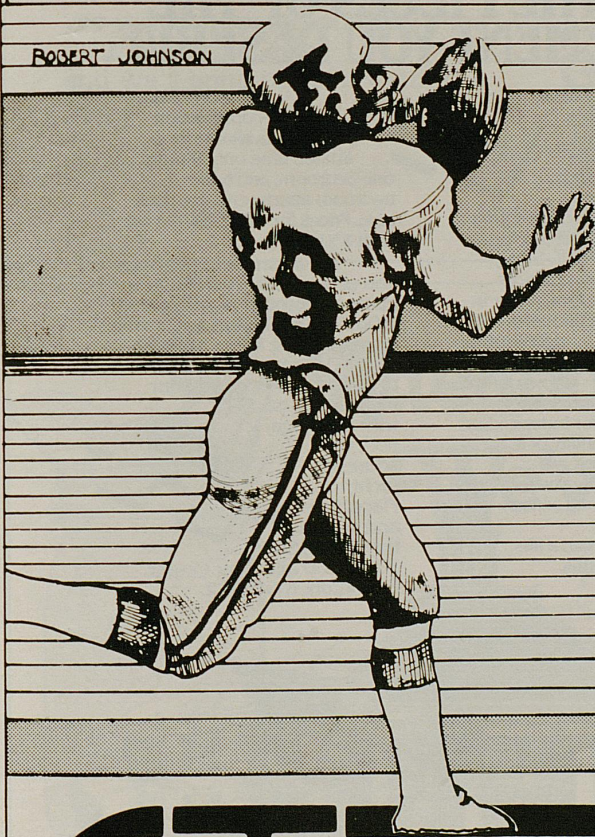
11:00 A.M. - 2:30 P.M.

4:15 P.M. - 8:00 P.M.

SUNDAY

11:00 A.M. - 7:00 P.M.

ROBERT JOHNSON



THE HOTTEST GAME IN TOWN!

Special
Party
Packages

**DREAM
MACHINE**
FAMILY ENTERTAINMENT CENTER

Ask About
our
Fund-Raising
Ideas!

Monday - Saturday 10 a.m. - 11 p.m.

Sunday 12:30 p.m. - 9:30 p.m.

Record Bar®

RECORDS, TAPES & A LITTLE BIT MORE

TURFLAND MALL



Turfland Mall

Harrodsburg Road
at Lane Allen

Monday-Saturday 10:00 a.m. to 9:00 p.m.

Sunday 1:00 p.m. to 5:00 p.m.

Baseball Wildcats Open Season

The University of Kentucky baseball team opened its season this weekend with a young squad.

Nineteen of the 29 players on the roster are either freshmen or sophomores.

The entire pitching staff returns from last year's 23-32 club, a rebuilding year after 1981's 39-16-1 campaign and second place finish in the Southeastern Conference.

Fourteen lettermen return for Coach Keith Madison, but only two returnees were among last year's regular eight starters.

First baseman Tim Anderson and second baseman Terry Ryan are back, but junior college transfer Steve Kundick will challenge Anderson for playing time.

Pitching should be the strength of the club as starters Paul Kilgus, Jay Ray, Jeff Parrett and Jeff Helman are back.

Kilgus, the only left-hander of the group, was 6-5 last season with a 3.51 ERA. Ray notched a 6-1 record with a 4.11 ERA as a freshman.

A newcomer to watch is Louisville freshman Jack Savage, perhaps the finest prep right-hander in the Commonwealth last year.

JUCO John Sikes will be a player to watch at third base and newcomers Scott Knox and Wayne Able are expected to become standouts in the outfield. Able, a freshman from Mobile, was a seventh round pick of the Montreal Expos last June.

Instead of the usual spring trip to Florida, the Wildcats will host the first Kentucky Classic, March 14-18 at Shively Sports Center. Seton Hall, Maryland, Southeast Massachusetts, Eastern Connecticut and Dayton are entered.

1983 UK BASEBALL SCHEDULE

Date	Opponent	Time		Time
Feb. 26	ST. XAVIER (2)	1:00	Apr. 5	at Eastern Kentucky 3:00
Feb. 27	ST. XAVIER (2)	1:00	Apr. 6	NEW YORK TECH 3:00
Mar. 2	at Kentucky St.	3:00	Apr. 7	NEW YORK TECH 3:00
Mar. 5	at Georgia (2)	1:00	Apr. 9	GEORGIA (2) 1:00
Mar. 6	at Georgia	1:30	Apr. 10	GEORGIA 1:30
Mar. 10	GEORGETOWN	3:00	Apr. 12	INDIANA 3:00
Mar. 11	KENTUCKY STATE	3:00	Apr. 15	at LOUISVILLE 7:30
Mar. 12	WEST VIRGINIA	1:30	Apr. 16	SOUTHERN ILLINOIS (2) 1:00
Mar. 13	WEST VIRGINIA	1:30	Apr. 17	SOUTHERN ILLINOIS 1:00
Mar. 14	KENTUCKY CLASSIC	TBA	Apr. 18	EASTERN KENTUCKY 3:00
-18			Apr. 19	LOUISVILLE 3:00
Mar. 19	TENNESSEE (2)	1:00	Apr. 23	at Tennessee (2) 1:00
Mar. 20	TENNESSEE	1:30	Apr. 24	at Tennessee 1:30
Mar. 22	at Morehead State	3:00	Apr. 26	at Cincinnati 3:00
Mar. 24	CINCINNATI (2)	1:00	Apr. 30	VANDERBILT (2) 1:00
Mar. 26	at Vanderbilt (2)	1:00	May 1	VANDERBILT 1:30
Mar. 27	at Vanderbilt	1:30	May 7	at Florida (2) 6:00
Mar. 30	MOREHEAD STATE	3:00	May 8	at Florida 1:30
Apr. 2	FLORIDA (2)	1:00	May 12-15	SEC Tournament TBA
Apr. 3	FLORIDA	1:30		Home Games in ALL CAPS
				SEC Eastern Division in Bold

WE'VE PUT TOGETHER ALL THE PIECES OF THE RETIREMENT YOU DESERVE.

You know what you want in retirement. But, putting the right pieces together can be tough. Especially today.

Now there's an exciting new community developing in Lexington that finally brings together the very elements

you're looking for in retirement: the



right location with plenty of elbowroom, a personal setting for independent

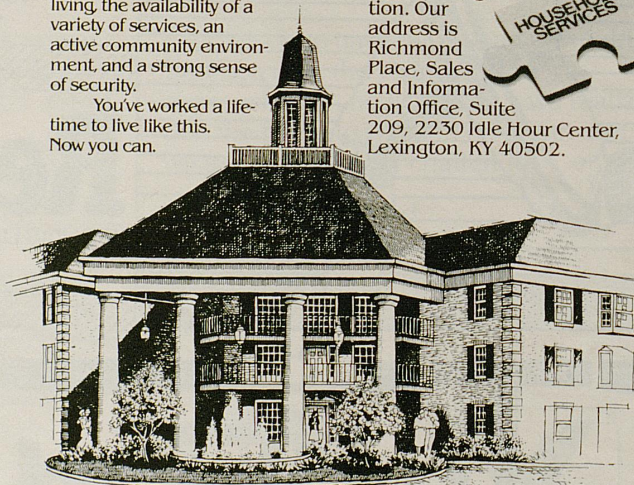
living, the availability of a variety of services, an active community environment, and a strong sense of security.

You've worked a lifetime to live like this. Now you can.



At Richmond Place. Pre-construction prices are available for a limited time only. Studio, one-bedroom, and two-bedroom apartments are available. Prices for these start in the high \$30s.

For a complete presentation of the Richmond Place plans and programs telephone (606) 269-6308 and ask a sales representative for an appointment. Or send your address to us and we'll send you our information packet with no obligation. Our address is Richmond Place, Sales and Information Office, Suite 209, 2230 Idle Hour Center, Lexington, KY 40502.



RICHMOND PLACE
You've earned it.

We salute the Kentucky Wildcats
with the U of K pep song.

On, on U of K
We are right
for the fight, today.
Hold that ball
and hit that line,
Every Wildcat star will shine.
We'll fight, fight, fight
for the blue and white.
As we roll to that goal, varsity.
We will kick, pass and run
Till the battle is won
and we'll bring home a victory.



T.O. Jack Hall, CLU
Suite 600
Louisville Trust Bldg.
Louisville, KY 40202
(502) 587-0936



Leonard "Babe" Ray, CLU
501 First National Bldg.
Lexington, KY 40507
(606) 255-8722

INSURANCE FOR YOU AND YOUR BUSINESS

**LIFE • DISABILITY
GROUP • RETIREMENT**

Registered Representatives
PML Securities Company
4601 Market Street
Philadelphia, PA 19101



**PROVIDENT
MUTUAL**
LIFE INSURANCE COMPANY
OF PHILADELPHIA



**Attention: Big Blue Fans
We've Got The Spirit!**

For dining and spirits, T. W. Lee's can't be beat.
...Whether you're headed for the game... or celebrating afterwards, meet your friends at T. W. Lee's

Our lineup features a variety of specialty foods, including our famous ribs... plus seafood, salads, sandwiches, burgers, and desserts.

Or enjoy an expertly mixed drink from our lounge... Win or lose at the game, no one loses at T. W. Lee's... We've got the spirit.

T.W. LEE'S

Richmond at New Circle Roads



U.K. Basketball Schedule 1982-83

DATE	OPPONENT	SITE	TIME	DATE	OPPONENT	SITE	TIME
Nov. 21	Soviet National Team	LEXINGTON	86-89	Jan. 15	Auburn	LEXINGTON	67-75
Nov. 27	Butler	LEXINGTON	90-53	Jan. 17	Florida	LEXINGTON	70-63
Dec. 1	Notre Dame	South Bend	58-45	Jan. 22	Vanderbilt	Nashville	82-77 (OT)
Dec. 4	Villanova	LEXINGTON	93-79	Jan. 29	Georgia	Athens	63-70
Dec. 7	Detroit	LEXINGTON	83-46	Jan. 31	Tennessee	Knoxville	63-65
Dec. 11	Illinois	LEXINGTON	76-57	Feb. 5	Alabama	LEXINGTON	76-70
Dec. 17	UKIT	LEXINGTON		Feb. 8	Mississippi State	LEXINGTON	88-67
	UK vs. Duquesne		55-42	Feb. 12	Auburn	Auburn	71-69
Dec. 18	UK vs. Tulane	LEXINGTON	80-61	Feb. 14	Florida	Gainesville	73-61
Dec. 22	Indiana	Bloomington	59-62	Feb. 19	Vanderbilt	LEXINGTON	82-63
Dec. 29	Kansas	LOUISVILLE	83-62	Feb. 26	Georgia	LEXINGTON	2:00 (TV-27*)
Jan. 3	Mississippi	LEXINGTON	72-60	Feb. 27	Tennessee	LEXINGTON	2:05 (TV-18)
Jan. 5	Louisiana State	LEXINGTON	52-50	Mar. 3	Mississippi	Oxford	7:35 (ESPN)
Jan. 8	Alabama	Tuscaloosa	67-74	Mar. 5	Louisiana State	Baton Rouge	8:30
Jan. 10	Mississippi State	Starkville	59-53 (OT)	Mar. 10-13	SEC Tournament	Birmingham	TBA

All times EST and p.m.

*Delayed TV



**CATS
LOVE
IT.**



THE DAIRY FARM
FAMILIES
OF KENTUCKY

american dairy association

The
Vol
Roge
Ass
row,
Chan
Kenn
McC

WE'RE PROUD OF OUR KENTUCKY WILDCATS!

THE DAIRY FARM FAMILIES OF KENTUCKY AMERICAN DAIRY ASSOCIATION



The 1982-83 University of Kentucky Wildcats: front row, left to right: Volunteer Assistant Jeff Riley, Head Coach Joe B. Hall, Dirk Minniefield, Roger Harden, Troy McKinley, Derrick Hord, Jim Master, Dickie Beal, Associate Coach Leonard Hamilton, Student Manager Roger Thomas. Back row, left to right: Equipment Manager Bill Keightley, Assistant Coach Bob Chambers, Todd May, Tom Heitz, Melvin Turpin, Sam Bowie, Bret Bearup, Kenny Walker, Charles Hurt, Assistant Coach Joe Dean, Trainer Walt McCombs.

*Tune in the "Joe Hall Show"
for an inside look at the Wildcats
Brought to you by
Kentucky's Dairy Farm Families.*

KENTUCKY ROSTER

No.	Name	Pos.	Ht.	Wt.	Cl.	Age	Exp.	Hometown
10	Dirk Minniefield	G	6-3	180	Sr.	21	3L	Lexington
11	Dicky Beal	G	5-11	170	Jr.	20	2L	Covington
20	Jim Master	G	6-5	175	Jr.	20	2L	Ft. Wayne, Ind.
23	Roger Harden	G	6-1	170	Fr.	18	—	Valparaiso, Ind.
24	Bret Bearup	F	6-9	230	So.	21	1L	London
31	Sam Bowie	C-F	7-1	230	Jr.	21	2L	Lebanon, Pa.
32	Derrick Hord	F	6-6	210	Sr.	22	3L	Bristol, Tenn.
33	Tom Heitz	C-F	6-9	215	Jr.	21	2L	Hamilton, Ind.
34	Kenny Walker	F	6-8	190	Fr.	18	—	Roberta, Ga.
40	Troy McKinley	F	6-6	195	So.	19	1L	Independence
44	Charles Hurt	F	6-6	210	Sr.	21	3L	Shelbyville
54	Melvin Turpin	C	6-11	235	Jr.	22	2L	Lexington

american dairy association

MAKE YOUR MOVE WITH A WINNER...

Get the jump on your financial needs by making your move to Second National Bank. Ninety-nine years of experience, friendly personnel and comprehensive services have made Second National the banking choice of many successful businesses and individuals.

Visit any of our eleven convenient locations and let our team of professionals put its experience and expertise to work for you.

Second National wishes much success to Coach Hall and the Cats during the 1982-83 season.

Second National Bank and Kentucky Basketball...solid and established.

Second National Bank

Member F.D.I.C.

Growing with Kentucky



Reliable Prescription Service
Since 1921

From our first drug store in London, Kentucky to 48 locations throughout Kentucky, Begley's is dedicated to continued growth while upholding the tradition of old fashioned personal care and friendly service to all our customers.



How James Worthy improved his game over the summer.

Between the NCAA Championships and his professional debut as a Los Angeles Laker, James Worthy took a step to improve his game:

He started wearing the most technically advanced shoe in basketball—the *New Balance Pride*.

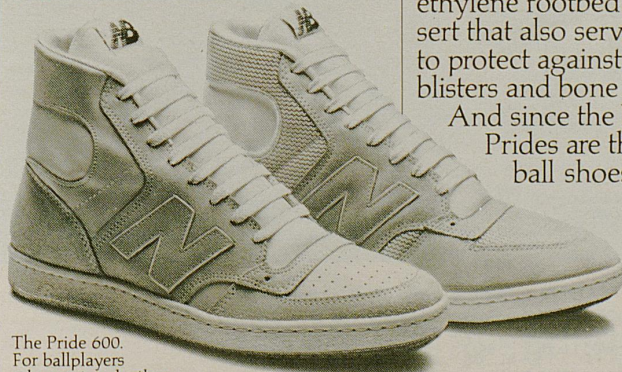


The sine wave outsole gives James great traction.

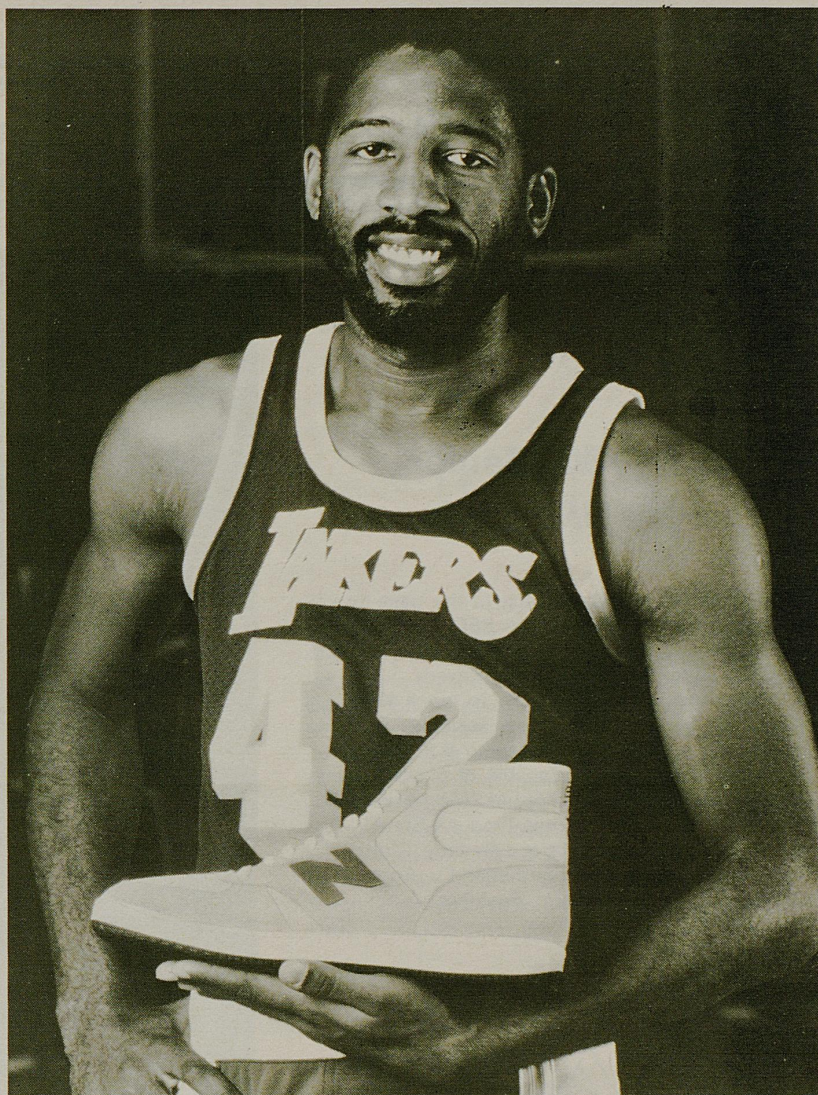
(Given the fact that Mr. Worthy wears a size 14 shoe, this was no small improvement.)

Consider the high performance features the NBA's number one draft choice now enjoys:

For superior upper foot support, the Pride has a unique triple-layer upper. This combination of lining, mesh and leather results in a shoe that retains its shape—and stability—better than any basketball shoe ever has.



The Pride 600. For ballplayers who are into leather.



For superior traction, the Pride has a sine wave outsole made of durable, high-grade rubber.

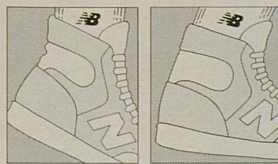
For unprecedented comfort, the Pride has a polyethylene footbed insert that also serves to protect against blisters and bone spurs.

And since the New Balance Prides are the only basketball shoes available in a

variety of widths, James Worthy is now able to get *exactly* the fit he demands from his shoes.

Why not take a tip from a guy destined for greatness in the NBA, and get yourself a pair of Prides.

You'll notice an immediate improvement in *your* game.



A thickly padded action collar cradles and protects James' achilles.

The Pride 500. For ballplayers who think mesh is cool.



new balance
PRIDE

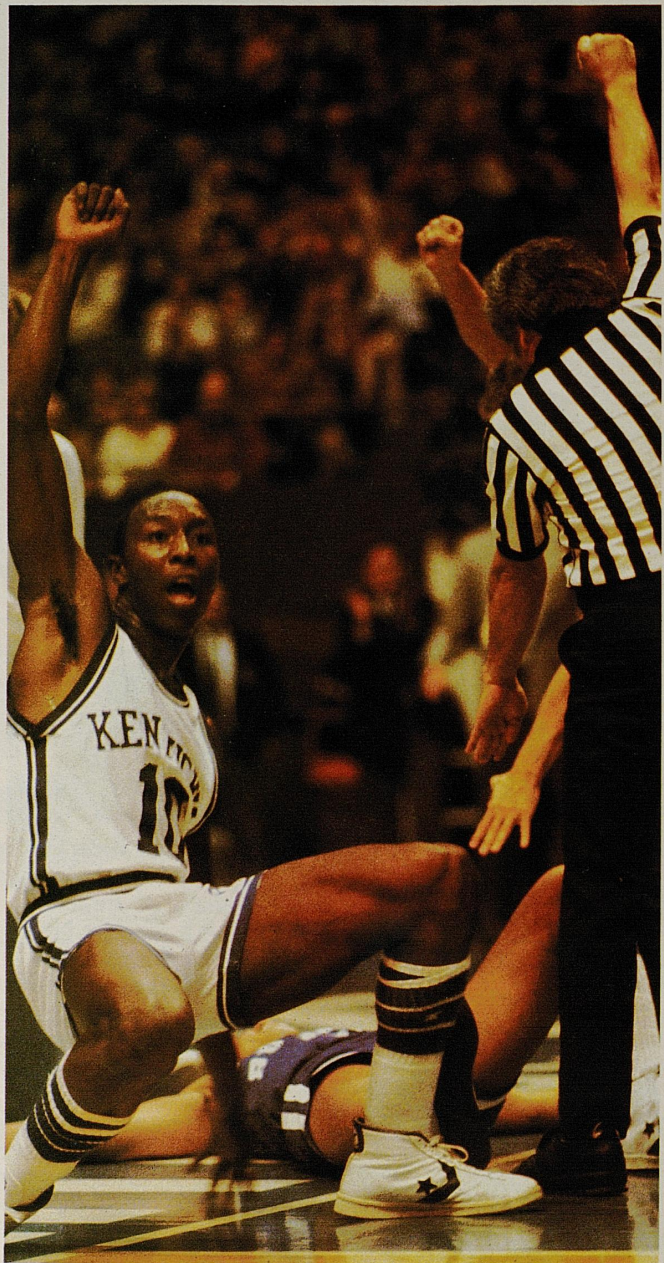
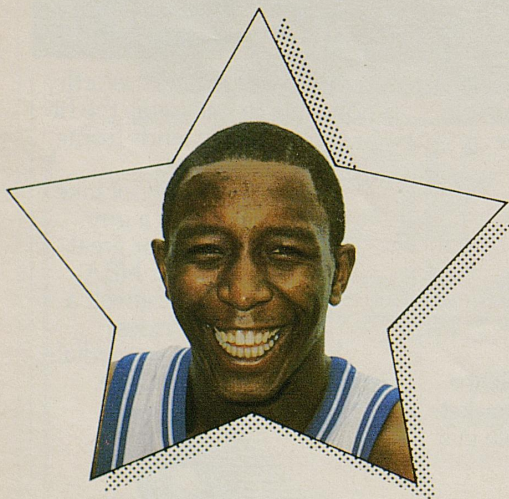
New Balance Inc., Boston, MA 02134



Dirk Minniefield - Guard

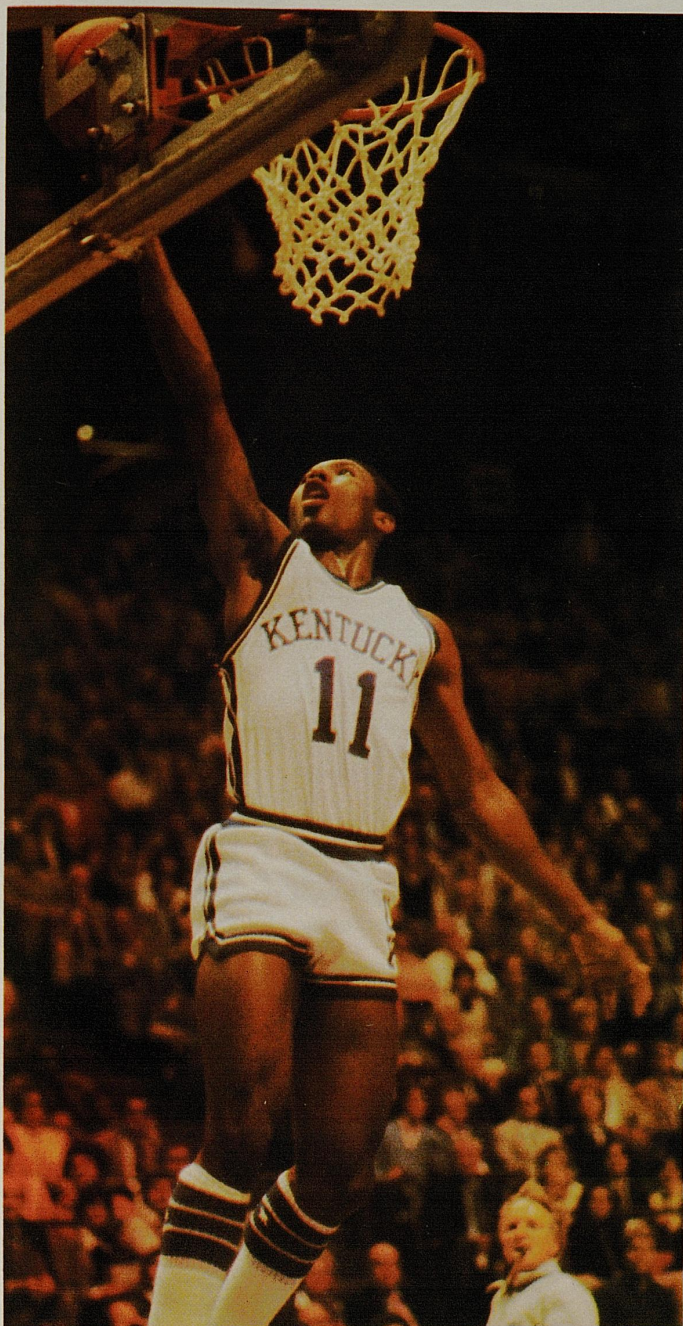
**6-3, 180, Senior
Lexington, Ky.**

Co-MVP of the squad for each of the past two seasons... Named MVP of the SEC Tournament played last season in Rupp Arena... Also named to All-UKIT team... Member of players' all-conference team... Sure bet to break Kyle Macy's school record for career assists... Ranked second in the league by averaging 6.3 assists per game last season... Capable of playing point guard or second guard... Former "Mr. Basketball" in state of Kentucky... Three-time All-State pick and prep All-America at Lafayette High... High school coach: Jock Sutherland... Born January 17, 1961... Major: Business Administration.



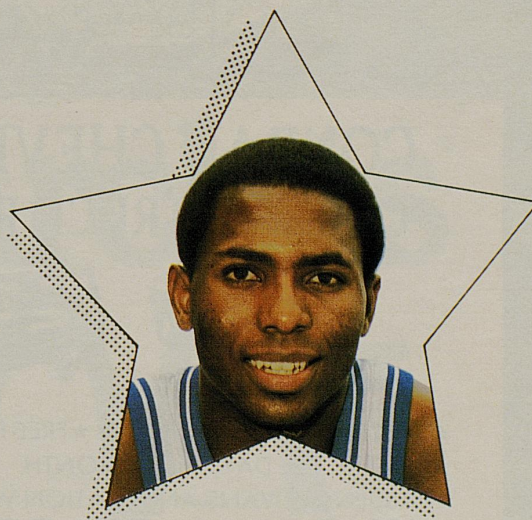
Yr.	G-GS	Minutes	Field Goals	Free Throws	Rebounds	A	PF-D	Points	High
Fr. (79-80)	34-18	691-20.3	68-142-47.9	35-49-71.4	70-2.1	126	82-3	171-5.0	14
So. (80-81)	28-28	890-31.8	118-213-55.4	55-63-87.3	79-2.8	151	79-4	291-10.4	20
Jr. (81-82)	30-30	1034-34.5	128-251-51.0	84-111-75.7	94-3.1	188	90-4	340-11.3	25
Career	92-76	2615-28.4	314-606-51.8	174-213-78.0	243-2.6	465	151-11	800-8.7	25

Dicky Beal - Guard



**5-11, 170, Junior
Covington, Ky.**

Played in 29 games last season, starting one... Averaged 3.3 points per game and was tied for second on the team with 54 assists... Scored career high 12 points against Auburn in the SEC Tournament... Earned UK's Sixth Man Award three times last season... Started six games as a freshman and made All-UKIT team that year... Exceptional quickness and leaping ability... Prep All-American at Covington Holmes High... Led Holmes to 33-3 record and state tournament as a senior... High school coach: Reynolds Flynn... Born: September 18, 1962... Major: Arts and Sciences.



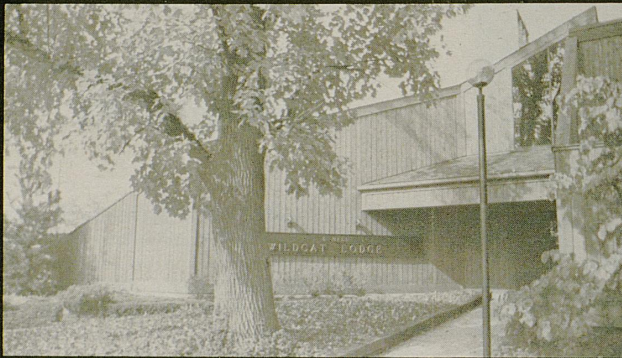
Yr.	G-GS	Minutes	Field Goals	Free Throws	Rebounds	A	PF-D	Points	High
Fr. (80-81)	27-6	344-12.7	23- 52-44.2	24-42-57.1	19-0.7	50	44-2	70-2.6	9
So. (81-82)	29-1	360-12.4	38- 78-48.7	19-33-57.6	23-0.8	54	44-1	95-3.3	12
Career	56-7	704-12.6	61-130-46.4	43-75-57.3	42-0.8	104	88-3	165-2.9	12

Hubbuchi's Interior design

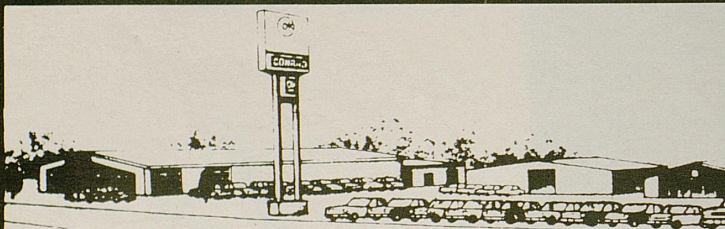
882 East High Street
in Chevy Chase
Lexington, Kentucky 40502
269-2306

324 West Main
Louisville, Kentucky 40202

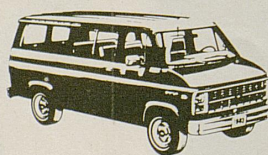
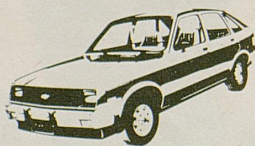
1100 Walnut
Owensboro, Kentucky 42301



Wildcat Lodge



CONRAD CHEVROLET CAR AND TRUCK RENTAL



- ★ SPECIAL WEEKEND RATES ★ FREE PICK-UP & DELIVERY
- ★ RENT BY THE DAY, WEEK, MONTH
- ★ PASSENGER VANS AND STATION WAGONS

269-4634 2800 RICHMOND Rd.
Just Off New Circle



RUSSELL RICE
Sports Information
Staff Director

Russell Rice was named sports information director at UK in May, 1969, after serving two years as assistant to Ken Kuhn. Rice came to UK from the **Lexington Leader**, where he was a general reporter eight years and sports editor five years.

A three-sport letterman at Paintsville's Van Lear High, Rice was graduated from UK after a stint in the U. S. Marine Corps during World War II.

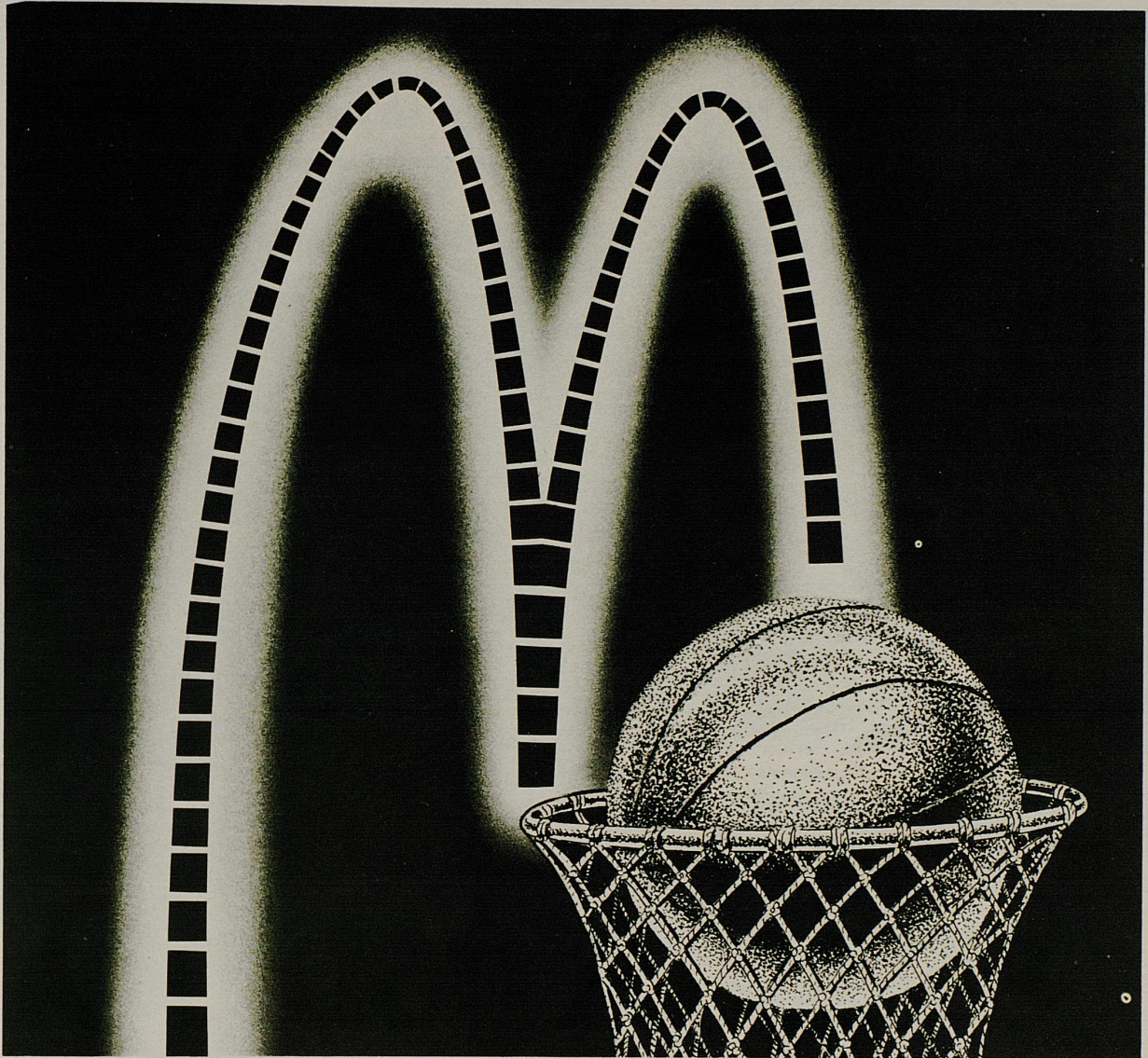
An authority on Kentucky basketball and football, Russell has authored several books, including his latest work: "The Wildcat Legacy, A Pictorial History of Kentucky Basketball," published this fall. Others include: "The Wildcats: A Story of Kentucky Football," "The Big Blue Machine: A Story of Kentucky Basketball," the Kentucky portion of "The SEC: A Pictorial History of Southeastern Conference Football," and "Joe B. Hall: My Own Kentucky Home."



RANDY STACY
Asst. Sports
Information
Director



RENA KOIER
Asst. Sports
Information
Director



Golden ArchesTM

Real Crowd Pleasers.

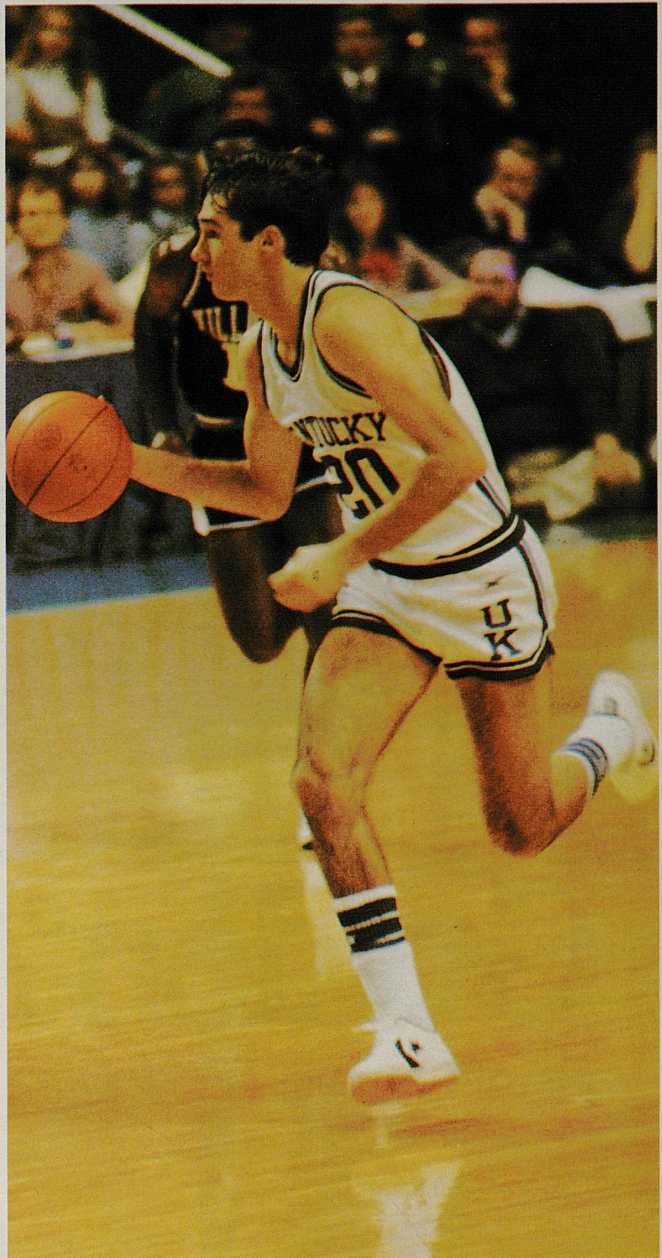
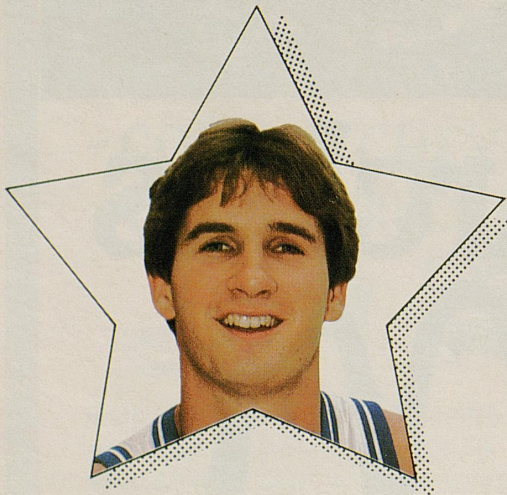




Jim Master - Guard

**6-5, 175, Junior
Ft. Wayne, Ind.**

Started 29 of UK's 30 games in '81-82...
Second on the team with 13.4 scoring average...
Won SEC free throw title with 89.6% accuracy... Hit 40 consecutive free throws from Dec. 12, 1981 through Jan. 20, 1982 to break Kyle Macy's school record and establish the second longest streak in league history...
Entered the season with a streak of 13 straight charity tosses... Named to All-UKIT last season... Prep All-America and Indiana's "Mr. Basketball" at Harding High... Led South team to silver medal in 1981 during basketball competition at the National Sports Festival...
High school coach: Harlan Frick... Born: March 16, 1962... Major: Arts and Sciences.



Yr.	G-GS	Minutes	Field Goals	Free Throws	Rebounds	A	PF-D	Points	High
Fr. (80-81)	27- 3	512-19.0	64-142-45.1	48- 56-85.7	26-1.0	25	43-0	176- 6.5	16
So. (81-82)	30-29	969-32.3	153-315-48.6	95-106-89.6	63-2.1	78	57-2	401-13.4	29
Career	57-32	1480-26.0	217-457-47.5	143-162-88.3	89-1.6	103	100-2	577-10.1	29



AGRICULTURE'S SIGN OF THE TIMES...

Fourth Street Fertilizer Co.
 Lexington
 Paynes Depot
 Shelbyville
 Lebanon
 Warsaw
 Gallatin County Farm Supply

Fourth Street Implement Co.
 Ford Tractors & Equipment
 Sales Parts Service
 993 Nandino Boulevard
 Lexington

Fourth Street Tobacco Whse. Co.
 Lexington
 Marshall's Tobacco Warehouse
 Gentry Tobacco Warehouse
 Fourth Street Tobacco Warehouse
 Lebanon
 Fourth Street Tobacco Warehouse
 Paris
 Paris Independent Tobacco Warehouse

We love ya 'cats!

The Clay Ward Agency.
 Insuring the world's finest
 bloodstock for half a century.

Since 1931. Equine Insurance through Lloyds of London.

BOX 294/PARIS, KY. 40361
 PHONE (606) 987-1861
 TELEX 218-460
 CABLE CLAYWARD

DAVID C. PARRISH
 SHACKELFORD PARRISH
 LONNIE OWENS
 W. BRUCE ISAACS



Roger Harden – Guard

**6-1, 170, Freshman
Valparaiso, Ind.**

Indiana's "Mr. Basketball" last season at Valparaiso High... Played in Kentucky-Indiana All-Star Series... Consensus All-State pick... Named to numerous prep All-America teams... Averaged 14.0 as a sophomore, 21.1 as a junior and 27.6 points a game as a senior... Excellent passer and outside shooter... Good court sense... Coach Hall calls him "a leader on the floor"... His brother Rob played at Florida before transferring to Valparaiso University... High school coach: Skip Collins... Born: December 19, 1963... Major: Political Science.

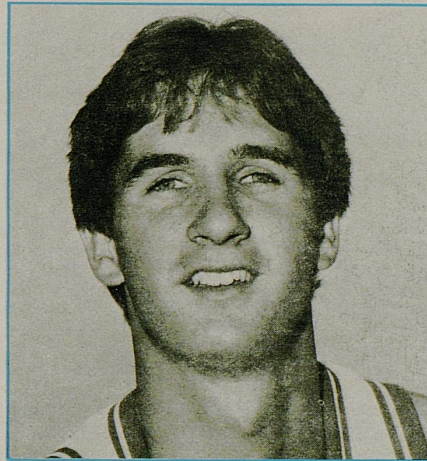


Player of the Week

MOST VALUABLE PLAYER

JIM MASTER

The 6-5 junior from Ft. Wayne, Ind., enjoyed another outstanding game last Saturday night against Vanderbilt. Master hit eight of 10 field goal attempts and was a perfect six-for-six from the charity stripe, scoring 22 points. Jim also contributed four assists.



**YOU'RE
Wendy's
KIND OF
PEOPLE™**

SIX LOCATIONS TO SERVE YOU

- 1499 Boardwalk
- 1792 Alexandria Drive
- 757 New Circle Road
- 3010 Richmond Road
- 2575 Nicholasville Road
- Eastern By-Pass, Richmond, Ky.

THIS COUPON GOOD FOR A **FREE LARGE** *Coca-Cola*

when you buy any sandwich
and fries at **Wendy's**

EXPIRES
MARCH 31, 1983

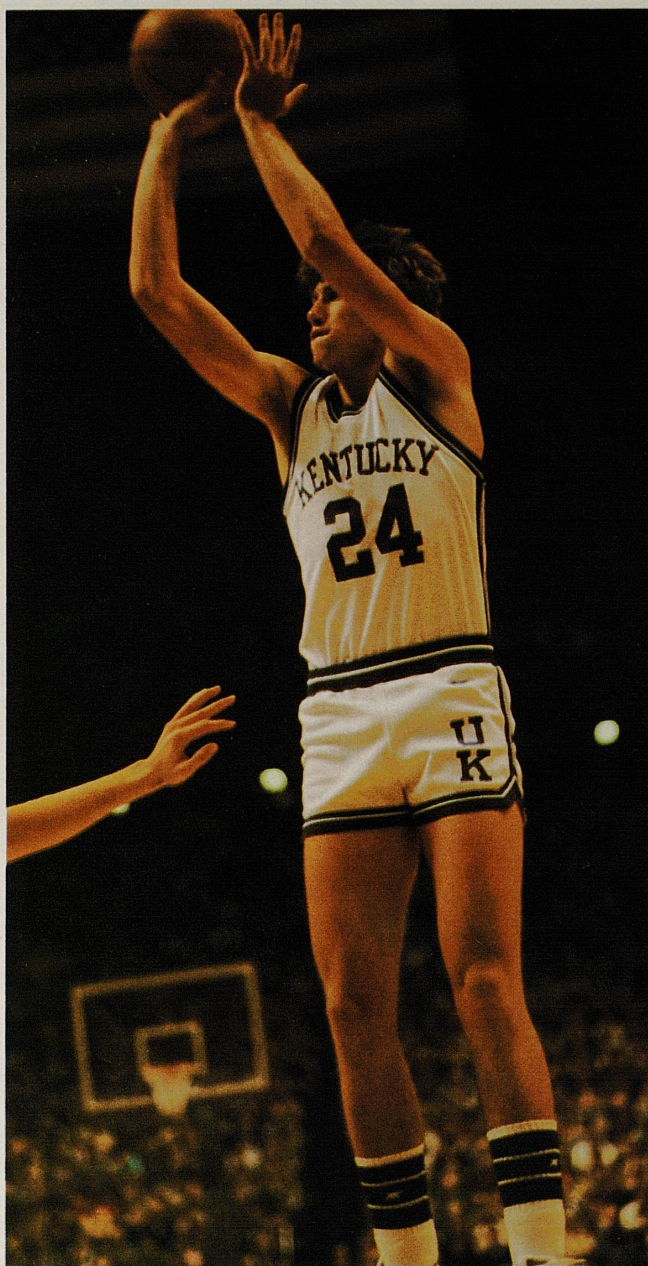
Good at participating Wendy's. Not good with any other offer.



Bret Bearup - Forward

**6-9, 230, Sophomore
Centerport, N.Y.**

Chose to red-shirt last season... Played in 26 of 28 games as a freshman in 1980-81... Scored in double figures three times as a reserve forward... Family has moved from Centerport, N.Y., to London, Ky.... Participated with the South team in the National Sports Festival in 1981... Two-time All-State and prep All-America at Harborfields High on Long Island... Ranked in top five percent nationally on the National Merit Test as high school senior... Benefited greatly from hard work in UK's weight program by adding needed strength for rugged inside play in SEC... High school coach: Joe Mayer... Born: November 17, 1961... Major: Arts and Sciences.



Yr.	G-GS	Minutes	Field Goals	Free Throws	Rebounds	A	PF-D	Points	High
Fr. (80-81)	26-0	258-9.9	28-74-37.8	15-24-62.5	43-1.7	8	35-1	71-2.7	12

Airdrie Stud



The Airdrie Stallions

An Eldorado
Barrera
Bold L.B.
Borzoi
Doc Sylvester
Doonesbury
Elocutionist
Far North
Fifth Marine
Guilty Conscience

Highland Park*
Irish Tower
Junction
Key to the Kingdom
Kirtling
Matsadoon
Nain Bleu
Nikoli
Northjet

*In Training

Providential II
Rich Cream
San Feliou
Silver Hawk
Star Spangled
Tanthem
Torsion
To the Quick
Upper Nile



Sam Bowie - Center

**7-1, 230, Junior
Lebanon, Pa.**

Missed last season while suffering from a small, incomplete fracture of his left tibia (shin bone)... Recovered sufficiently to practice with the team prior to the tour of the Orient last summer, but had a cast reapplied in early August due to a weakening in the area and underwent surgery in October... When he returns, he should be one of college basketball's outstanding players... Named to most All-America teams in 1980-81... Two-time All-SEC... Averaged 12.9 ppg as freshman and 17.4 in sophomore season... Led U.S. Olympic Team to five wins in "Gold Medal Games" in 1980... A member of the high school division of the Basketball Hall of Fame... Named to every prep All-America team after his senior season at Lebanon High... High school coach: Chic Hess... Born: March 17, 1961... Major: Arts and Sciences.





Yr.	G-GS	Minutes	Field Goals	Free Throws	Rebounds	A	PF-D	Points	High
Fr. (79-80)	34-33	886-26.1	165-311-53.1	110-144-76.4	276-8.1	26	110-8	440-12.9	27
So. (80-81)	28-28	895-32.0	185-356-52.0	118-164-72.0	254-9.1	39	80-2	488-17.4	29
Career	62-61	1781-28.7	350-667-52.4	228-308-74.0	530-8.5	65	190-10	928-15.0	29

Walmac-Warnerton Stallions

Alleged
Brent's Prince
Fluorescent Light
French Colonial
George Navonod

Inverness Drive
Lines of Power
Miswaki
Monteverdi
Nureyev

Red Ryder
Shecky Greene
Sportin' Life
Stalwart

 **Walmac Int'l.**
Warnerton 
ASSOCIATED FARMS

Inquiries to John T. L. Jones Jr.
3395 Paris Pike Lexington, Ky. 40511
Phone (606) 299-0473

The Pager



Comtel

606-233-2337

220 E. Second, Lexington





"Coca-Cola" and "Coke" are registered trade-marks which identify the same product of The Coca-Cola Company.

KENTUCKY

		FG								FT								PF	TP
10	DIRK MINNIEFIELD 6-3 Senior Guard	1	2	3	4	5	6	7	8	1	2	3	4	5	6	1	2	3	
		9	10	11	12	13	14	15	7	8	9	10	11	12	4	5			
11	DICKY BEAL 5-11 Junior Guard	1	2	3	4	5	6	7	8	1	2	3	4	5	6	1	2	3	
		9	10	11	12	13	14	15	7	8	9	10	11	12	4	5			
20	JIM MASTER 6-5 Junior Guard	1	2	3	4	5	6	7	8	1	2	3	4	5	6	1	2	3	
		9	10	11	12	13	14	15	7	8	9	10	11	12	4	5			
23	ROGER HARDEN 6-1 Freshman Guard	1	2	3	4	5	6	7	8	1	2	3	4	5	6	1	2	3	
		9	10	11	12	13	14	15	7	8	9	10	11	12	4	5			
24	BRET BEARUP 6-9 Sophomore Forward	1	2	3	4	5	6	7	8	1	2	3	4	5	6	1	2	3	
		9	10	11	12	13	14	15	7	8	9	10	11	12	4	5			
32	DERRICK HORD 6-6 Senior Forward	1	2	3	4	5	6	7	8	1	2	3	4	5	6	1	2	3	
		9	10	11	12	13	14	15	7	8	9	10	11	12	4	5			
33	TOM HEITZ 6-9 Junior Center-Forward	1	2	3	4	5	6	7	8	1	2	3	4	5	6	1	2	3	
		9	10	11	12	13	14	15	7	8	9	10	11	12	4	5			
34	KENNY WALKER 6-8 Freshman Forward	1	2	3	4	5	6	7	8	1	2	3	4	5	6	1	2	3	
		9	10	11	12	13	14	15	7	8	9	10	11	12	4	5			
40	TROY McKINLEY 6-6 Sophomore Forward	1	2	3	4	5	6	7	8	1	2	3	4	5	6	1	2	3	
		9	10	11	12	13	14	15	7	8	9	10	11	12	4	5			
44	CHARLES HURT 6-6 Senior Forward	1	2	3	4	5	6	7	8	1	2	3	4	5	6	1	2	3	
		9	10	11	12	13	14	15	7	8	9	10	11	12	4	5			
54	MELVIN TURPIN 6-11 Junior Center	1	2	3	4	5	6	7	8	1	2	3	4	5	6	1	2	3	
		9	10	11	12	13	14	15	7	8	9	10	11	12	4	5			
		1	2	3	4	5	6	7	8	1	2	3	4	5	6	1	2	3	
		9	10	11	12	13	14	15	7	8	9	10	11	12	4	5			
	TOTALS																		

Sit!

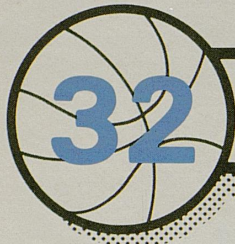
Coca-Cola
Trade-mark ®

		FG					FT					PF	TP						
4	GERALD CROSBY 6-1 Sophomore Guard	1	2	3	4	5	6	7	8	1	2	3	4	5	6	1	2	3	
		9	10	11	12	13	14	15	7	8	9	10	11	12	4	5			
10	VERN FLEMING 6-5 Junior Guard	1	2	3	4	5	6	7	8	1	2	3	4	5	6	1	2	3	
		9	10	11	12	13	14	15	7	8	9	10	11	12	4	5			
14	MONROE JONES 5-11 Junior Guard	1	2	3	4	5	6	7	8	1	2	3	4	5	6	1	2	3	
		9	10	11	12	13	14	15	7	8	9	10	11	12	4	5			
20	DERRICK FLOYD 6-3 Senior Guard	1	2	3	4	5	6	7	8	1	2	3	4	5	6	1	2	3	
		9	10	11	12	13	14	15	7	8	9	10	11	12	4	5			
22	HORACE McMILLAN 6-5 Freshman Guard-Forward	1	2	3	4	5	6	7	8	1	2	3	4	5	6	1	2	3	
		9	10	11	12	13	14	15	7	8	9	10	11	12	4	5			
25	JAMES BANKS 6-6 Junior Forward	1	2	3	4	5	6	7	8	1	2	3	4	5	6	1	2	3	
		9	10	11	12	13	14	15	7	8	9	10	11	12	4	5			
30	DONALD HARTRY 6-2 Freshman Guard	1	2	3	4	5	6	7	8	1	2	3	4	5	6	1	2	3	
		9	10	11	12	13	14	15	7	8	9	10	11	12	4	5			
31	RICHARD CORHEN 6-6 Sophomore Forward-Center	1	2	3	4	5	6	7	8	1	2	3	4	5	6	1	2	3	
		9	10	11	12	13	14	15	7	8	9	10	11	12	4	5			
32	LAMAR HEARD 6-5 Senior Forward	1	2	3	4	5	6	7	8	1	2	3	4	5	6	1	2	3	
		9	10	11	12	13	14	15	7	8	9	10	11	12	4	5			
33	GREG BOZMAN 6-7 Freshman Forward	1	2	3	4	5	6	7	8	1	2	3	4	5	6	1	2	3	
		9	10	11	12	13	14	15	7	8	9	10	11	12	4	5			
34	TROY HITCHCOCK 7-2 Freshman Center	1	2	3	4	5	6	7	8	1	2	3	4	5	6	1	2	3	
		9	10	11	12	13	14	15	7	8	9	10	11	12	4	5			
35	TERRY FAIR 6-7 Senior Forward-Center	1	2	3	4	5	6	7	8	1	2	3	4	5	6	1	2	3	
		9	10	11	12	13	14	15	7	8	9	10	11	12	4	5			
		1	2	3	4	5	6	7	8	1	2	3	4	5	6	1	2	3	
		9	10	11	12	13	14	15	7	8	9	10	11	12	4	5			
	TOTALS																		

GEORGIA

Officials: Don Rutledge, Bob Olah and Luis Grillo

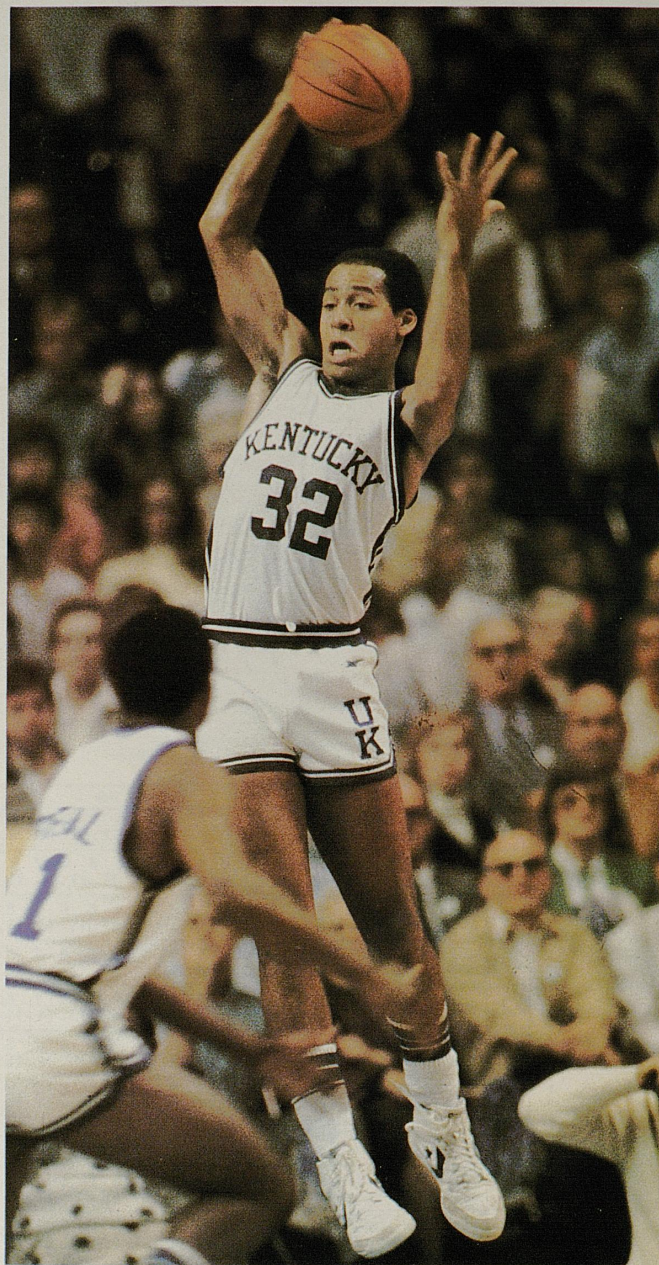
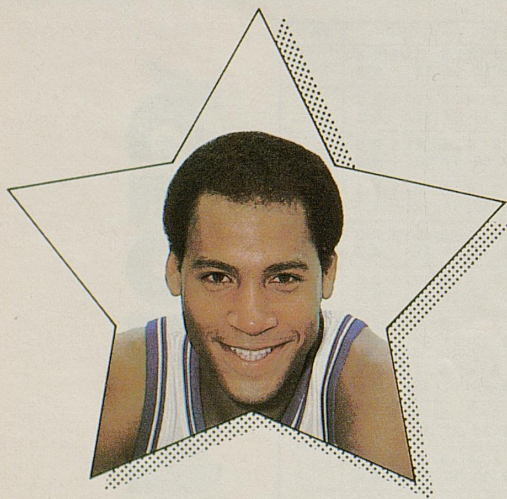
COCA-COLA BOTTLING CO.



Derrick Hord – Forward

**6-6, 210, Senior
Bristol, Tenn.**

All-SEC, All-District (Basketball Writers) and honorable mention All-America last season after leading UK in scoring (16.3 ppg) and minutes played (36.4 per game)... Averaged 18.4 ppg in SEC action... Also hit 56.6 percent from the field during league play as opposed to 49.2 percent overall... Scored career high 28 points against Akron in last season's opener... Named to every prep All-America team as highly recruited player out of Tennessee High in Bristol... Three-time All-State pick, averaged 26.7 ppg in senior campaign... Extremely talented player who is just now reaching his potential... High school coach: Bob Chambers... Born: September 19, 1960... Major: Communications.



Yr.	G-GS	Minutes	Field Goals	Free Throws	Rebounds	A	PF-D	Points	High
Fr. (79-80)	35- 2	677-19.3	78-166-47.0	49- 64-76.6	87-2.5	37	66-2	205- 5.9	18
So. (80-81)	28-21	710-25.4	97-239-40.6	54- 72-75.0	91-3.2	48	56-0	248- 8.9	24
Jr. (81-82)	30-30	1092-36.4	194-374-49.2	102-141-77.9	161-5.4	54	80-0	490-16.3	28
Career	93-53	2479-26.7	369-799-46.2	205-267-76.8	349-3.8	139	202-2	943-10.0	28

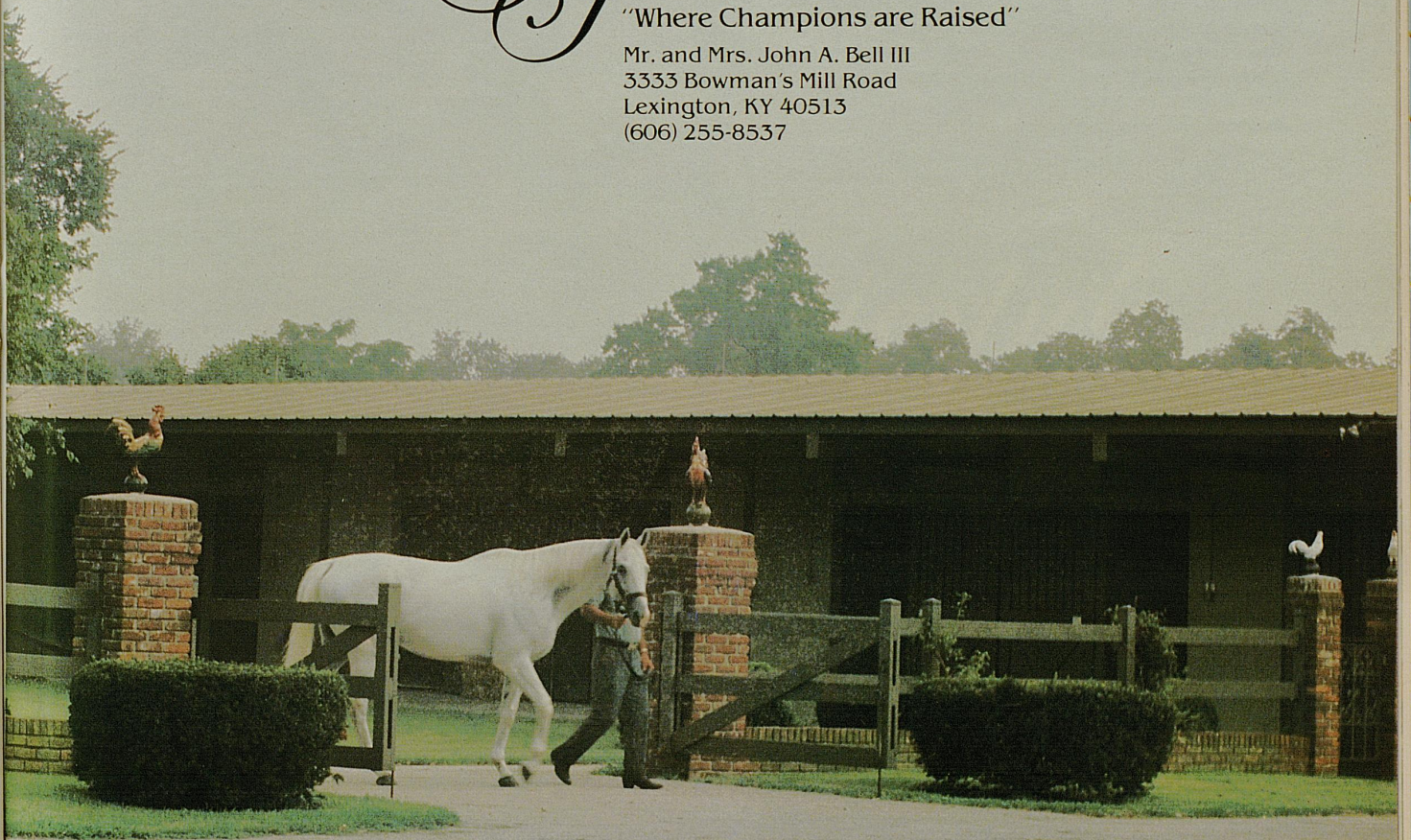
The Jonabell Farm Stallions

Bailjumper *Nostrum*
Cloudy Dawn *One for All*
Green Forest *Summing*
Hail the Pirates *Vigors*

*Jonabell
Farm*

"Where Champions are Raised"

Mr. and Mrs. John A. Bell III
3333 Bowman's Mill Road
Lexington, KY 40513
(606) 255-8537

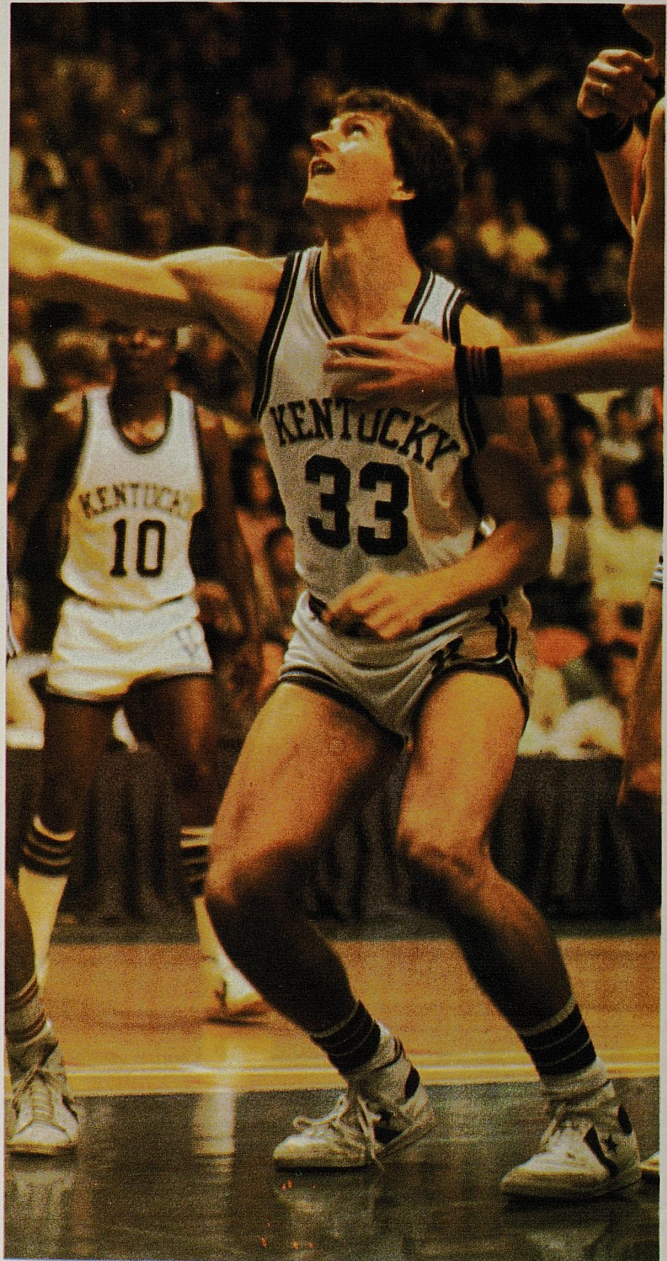




Tom Heitz – Center/Forward

**6-9, 215, Junior
Hamilton, Ind.**

Returned to action last season after red-shirting in 1980-81... Appeared in 29 of UK's 30 games as back-up center last season... Averaged 3.1 points per game and 1.9 rebounds per... Scored career high 15 points at Florida... Hit 60 percent from the field and 62.1 from the free throw line... Scored in double figures three times during last summer's trip to the Orient... Has added strength for rigors of long conference schedule... All-Stater at small Hamilton High... Played in Kentucky-Indiana All-Star Series after his senior year... Brother Mike was a seven-footer at West Virginia... Head coach: Steve Grill... Born: February 23, 1961... Major: Business Administration.



Yr.	G-GS	Minutes	Field Goals	Free Throws	Rebounds	A	PF-D	Points	High
Fr. (79-80)	24-0	108-4.5	6-22-27.3	18-33-54.6	20-0.8	3	13-0	30-1.3	5
So. (81-82)	29-0	219-7.6	24-40-60.0	41-66-62.1	54-1.9	5	27-0	89-3.1	15
Career	53-0	327-6.2	30-62-48.4	57-99-59.6	74-1.4	8	40-0	119-2.2	15



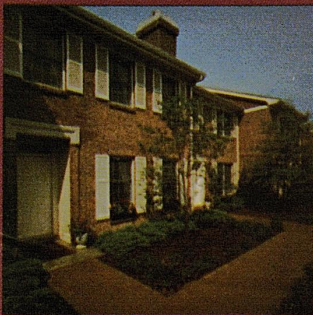
Copyright 1982 Griffin Gate Realty, Inc.



Womens Fashions by Collage

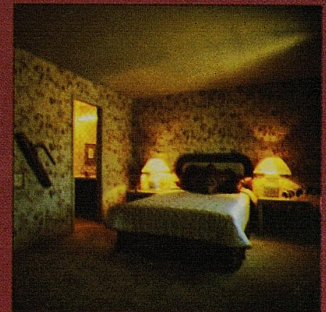
Interior by Barbara Ricke, A.S.I.D.

Picture your lifestyle. . .



Surround yourself with a lifestyle at Opera House Square that lets the world know who you are. Each townhome at Opera House Square is uniquely created and accented with touches of charm and warmth that distinguishes it from any other. Indulge your individual tastes by choosing your own decor or step into your new townhome that's ready for living with beautifully coordinated furnishings.

At Opera House Square you'll have a home that lets you be you. . . one that reflects your lifestyle.



Opera House Square Townhomes

541 West Short Street

Located one block from Lexington Center and Vine Center

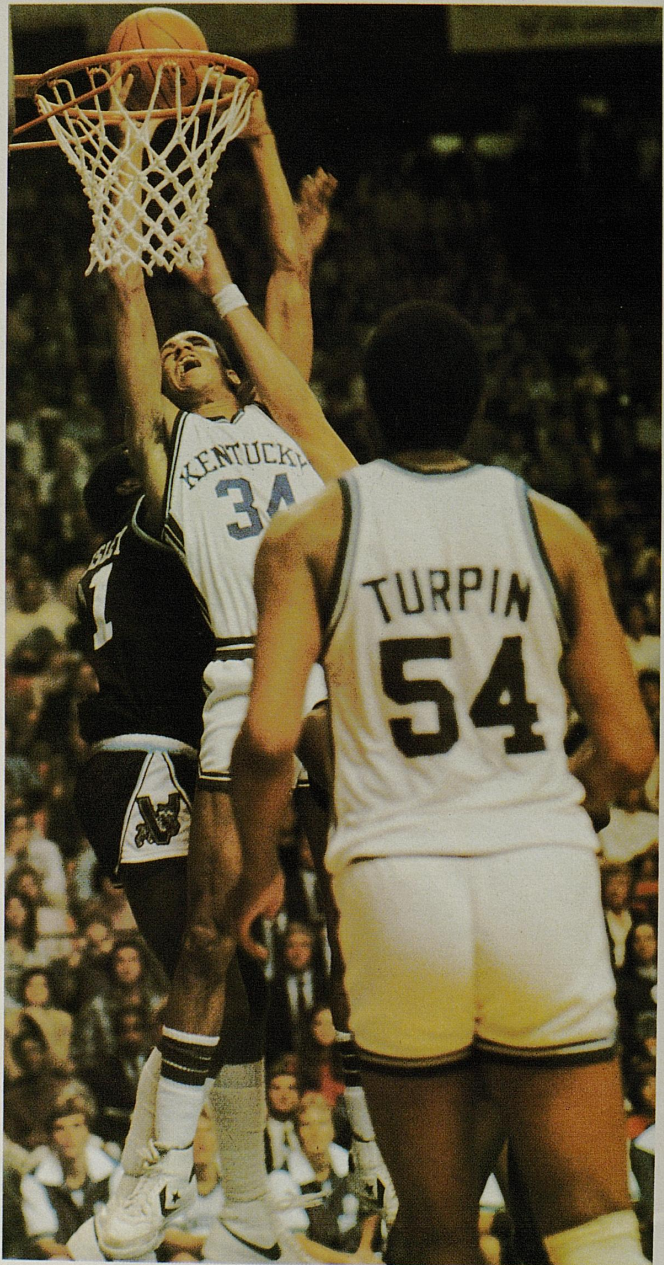
For further information, contact Griffin Gate Realty, Inc., W. Michael Terry, Real Estate Broker; (606) 259-0411.



Kenny Walker – Forward

**6-8, 190, Freshman
Roberta, Ga.**

High school player of the year in Georgia... Named to most prep All-America teams... Led Crawford Co. High to Georgia AA state titles in junior and senior years... Averaged 28.5 ppg and 18 rebounds per game in senior season... Scored 12.5 ppg as a sophomore and 25.0 ppg as a junior... Scored 20 points and grabbed 14 rebounds in the McDonald's Classic all-star game in Chicago... Member of South team in last summer's National Sports Festival... High school coach: Clyde Zachery... Born: August 18, 1964... Major: Business.



the Alchemy



Heather Blair photo

Alchemy: A mythical power or process of transforming base metal into gold.

United States
Rt. 1, Old Frankfort Pike
Versailles, KY 40383
Ph. (606) 846-4402, 846-4433
Telex 218344

London Office
144-146 New Bond St., W1
Phone 01 493-2689
Telex 261547

France
Haras de Preaux
B.P. No. 1, 14290 Orbec
Normandie. Ph. (31) 32.84.04
Telex 170160

STALLIONS:

Caracolero

Laomedonte

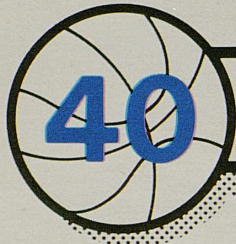
Lydian

Mount Hagen

Northern View

Rio Carmelo

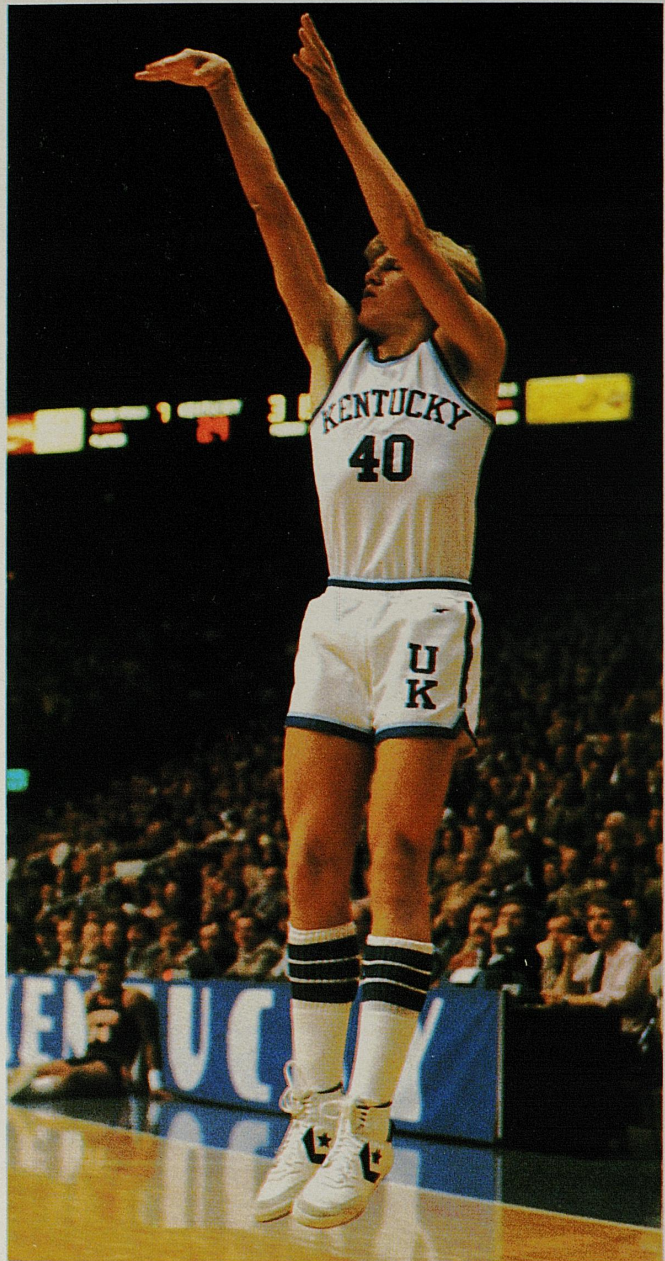
Ruthie's Native



Troy McKinley – Forward

**6-6, 195, Sophomore
Independence, Ky.**

Saw action in 16 games as a freshman... Averaged 1.0 ppg... Scored career-high 10 points vs. Jacksonville in the UKIT... Demonstrated outside shooting ability... Scored in double figures twice during tour of the Orient... Led Simon Kenton High to the Kentucky state title as a senior... Was named MVP of the state tournament... Averaged 25.3 ppg and 10.6 rebounds per contest as a senior... Played in Derby Classic and East-West all-star games... Coach Hall called him "one of the finest high school shooters I've seen" following his performance in state championship game... High school coach: Larry Miller... Born: March 21, 1963... Major: Business Administration.



Yr.	G-GS	Minutes	Field Goals	Free Throws	Rebounds	A	PF-D	Points	High
Fr. (81-82)	16-0	48-3.0	7-15-46.7	2-2-100.0	8-0.5	1	6-0	16-1.0	10

You May Not Know The Difference Between Tires. That's Why We Make Sure We Do.

Let's face it, tires aren't the number one topic of discussion at most cocktail parties. All you know about them is you want good handling, a smooth ride, and lots of mileage. And, of course, you want the best possible price.

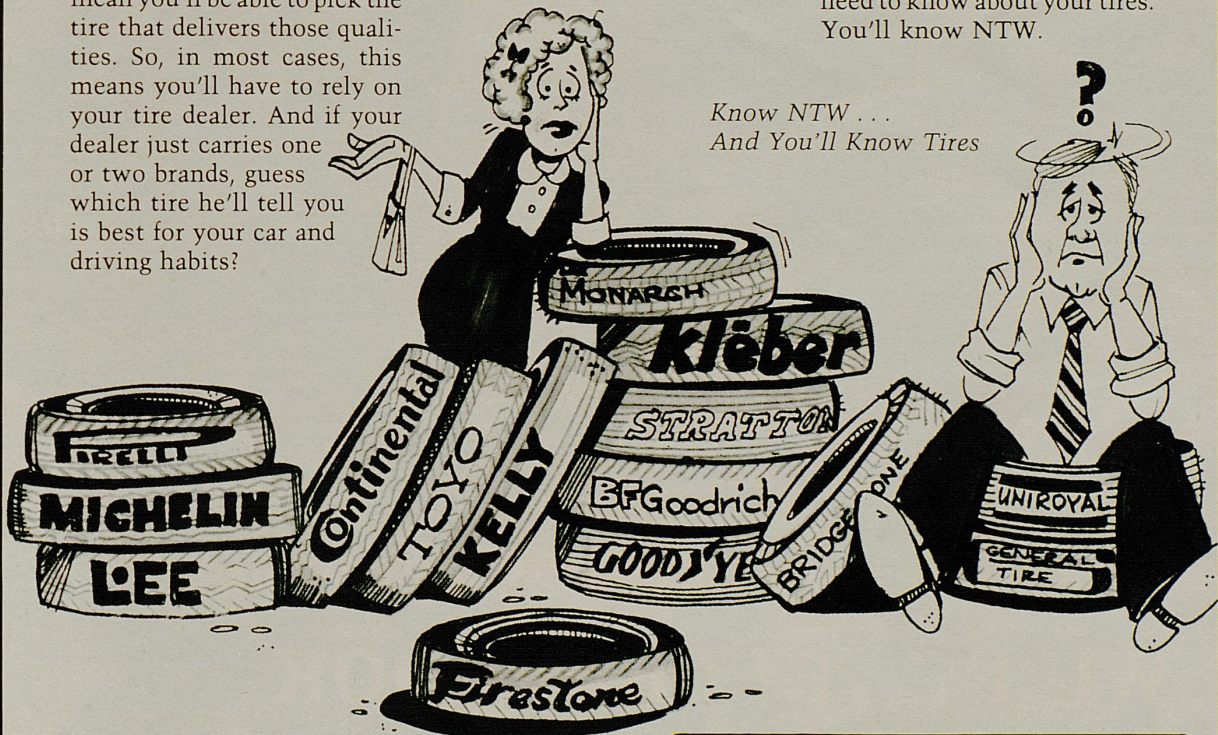
Unfortunately, knowing what qualities you want doesn't mean you'll be able to pick the tire that delivers those qualities. So, in most cases, this means you'll have to rely on your tire dealer. And if your dealer just carries one or two brands, guess which tire he'll tell you is best for your car and driving habits?

At NTW, our customers have been trusting us for a long time. We've built our reputation with honest and accurate advice, given by courteous, classroom trained salespeople. Our multiple brand selection assures you of getting exactly the right tire you need. And the buying power that comes

with our \$80 million annual sales means you won't find the tire you want at a better price — anywhere.

Next time you need tires, try NTW. Once we become the tire dealer you trust, you still might not want to talk tires at cocktail parties, but you'll know everything you need to know about your tires. You'll know NTW.

Know NTW . . .
And You'll Know Tires



North Store

231-8383

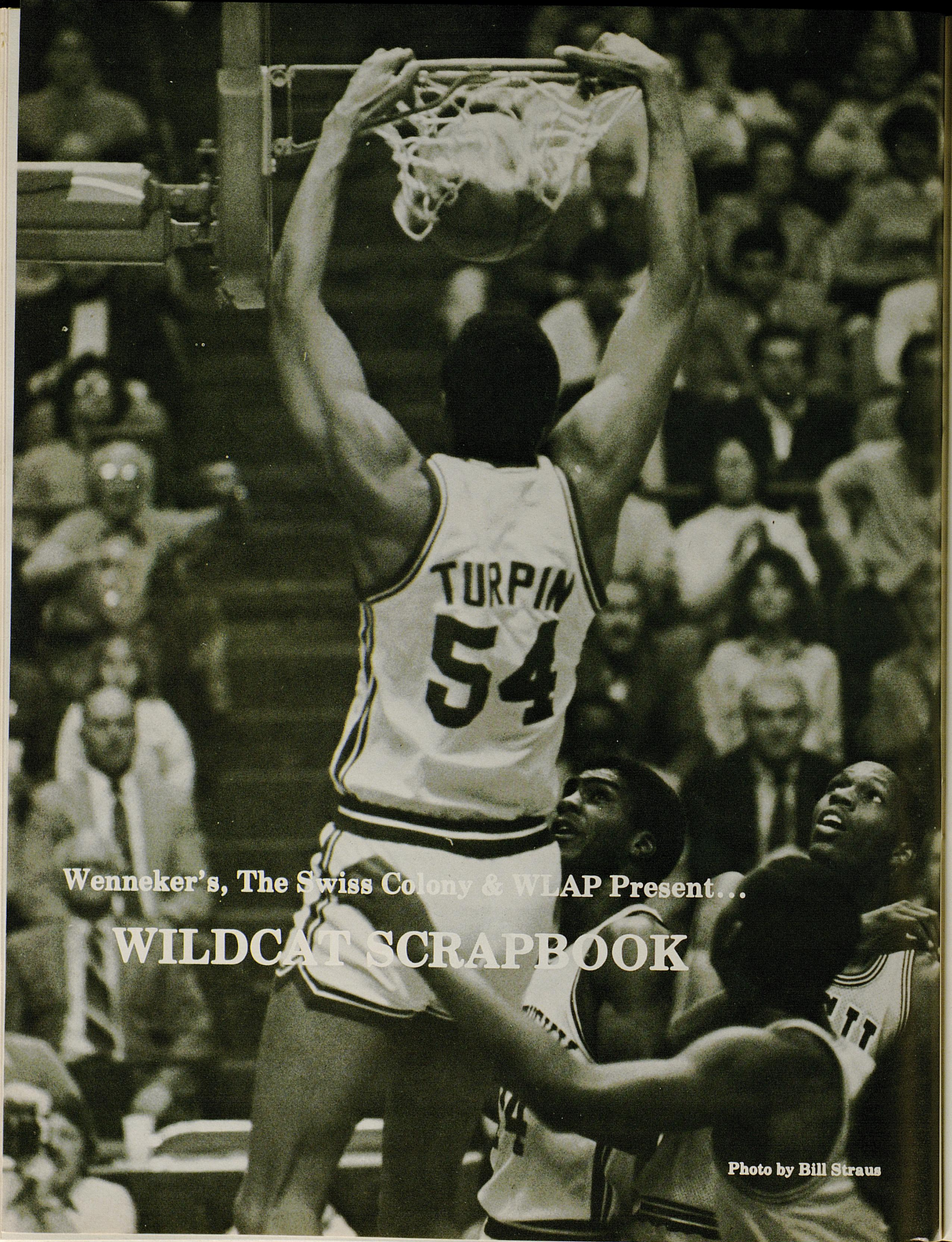
1251 Georgetown Road (just off New Circle Rd.)

South Store

276-4318

2550 Regency Road (behind Steak & Ale, at the end of Moore Drive)

Tires by [®]
NTW
National Tire Wholesale



Wenneker's, The Swiss Colony & WLAP Present...

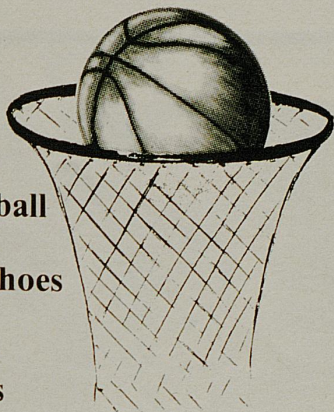
WILDCAT SCRAPBOOK

Photo by Bill Straus

Wenneker's
T
F
L
at
O
B
A

wenneker's wenneker's wenneker's
wenneker's wenneker's wenneker's

U.K. Basketball
and
Wenneker's Shoes
Two
Kentucky
Traditions



Turfland Mall
Fayette Mall
Lexington Mall

and in Louisville at
Oxmoor Center
Bashford Manor Mall

American Express • Mastercard • VISA • Shoppers Charge
Open Evenings 'til 9 • Sunday 1 'til 5 P.M.


The Swiss Colony

Fayette Mall



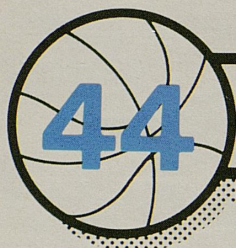
Delicious-Delightful-Delectable Gifts and Party Foods

For a beautiful selection of delicious meats, cheeses and party trays, come to your gourmet gift center, Swiss Colony. Also Gift Pacs for every occasion that we mail anywhere in U.S.A.

Open Evenings 'til 9 • Sunday 1 'til 5 P.M.

**ADULT CONTEMPORARY MUSIC
WITH PERSONALITY**

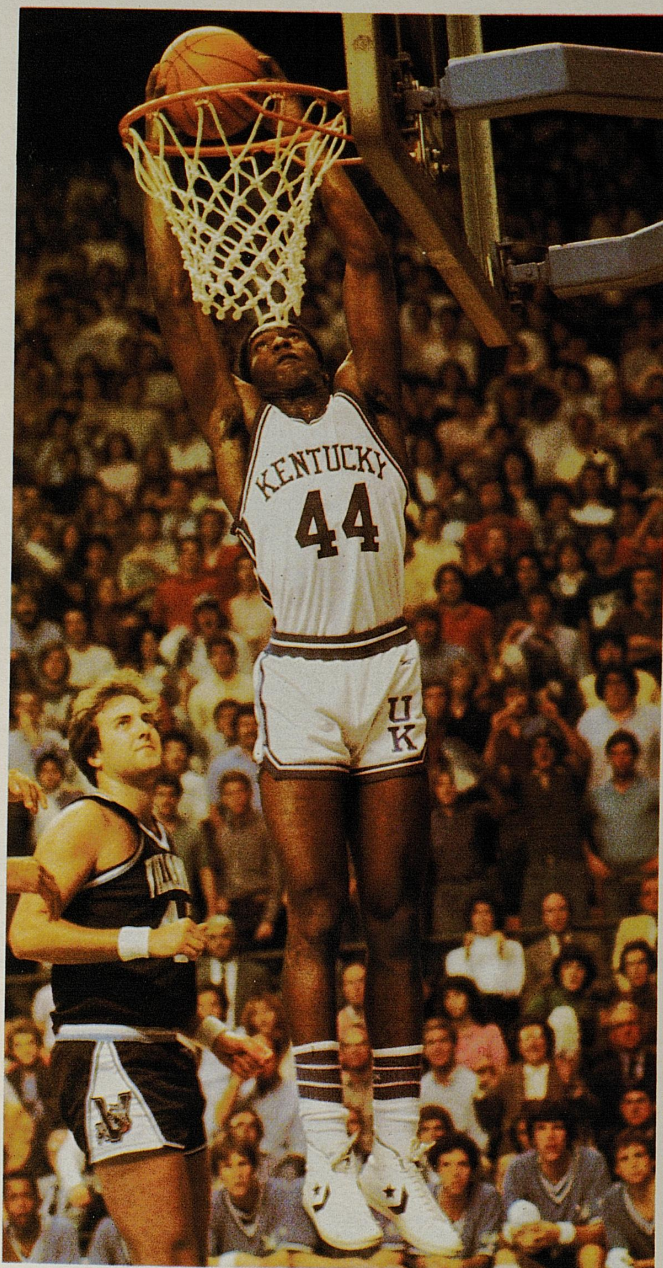
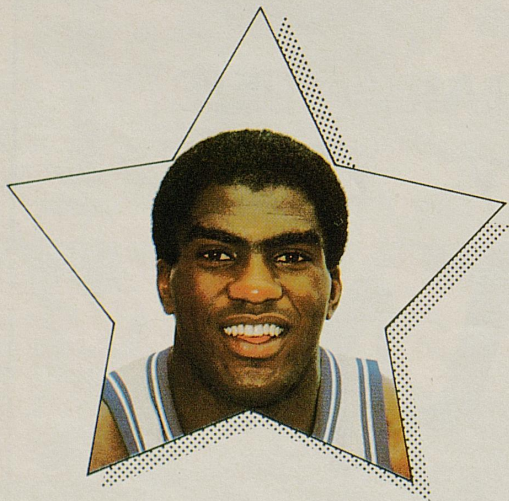
**WLAP
AM 670**



Charles Hurt - Forward

**6-6, 210, Senior
Shelbyville, Ky.**

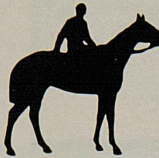
One of UK's most consistent players... Earned Sixth Man Award six times in '81-82... Started only eight games but was fifth on the squad in minutes played... Averaged 6.6 ppg and 4.5 rpg... Matched career high of 18 points vs. North Carolina... Has career shooting marks of 57.6 percent from the field and 64.7 percent from the charity stripe... Improved from 57.9 to 70.7 percent at the free throw line the last two seasons... Great athlete with tremendous jumping ability... Has played in every game since coming to Kentucky... Prep All-America and two-time All-State at Shelby Co. High... MVP in Derby Classic... High School coach: Tom Creamer... Born: March 28, 1961... Major: Arts and Sciences.



Yr.	G-GS	Minutes	Field Goals	Free Throws	Rebounds	A	PF-D	Points	High
Fr. (79-80)	35- 1	475-13.6	52- 86-60.5	32- 52-61.5	87-2.5	14	74- 2	136-3.9	10
So. (80-81)	28-23	683-24.4	79-138-57.2	33- 57-57.9	127-4.5	30	92- 6	191-6.8	18
Jr. (81-82)	30- 8	754-25.1	70-125-56.0	65- 92-70.7	134-4.5	21	80- 2	205-6.8	18
Career	93-32	1912-20.6	201-349-57.6	130-201-64.7	348-3.7	65	246-10	532-5.7	18

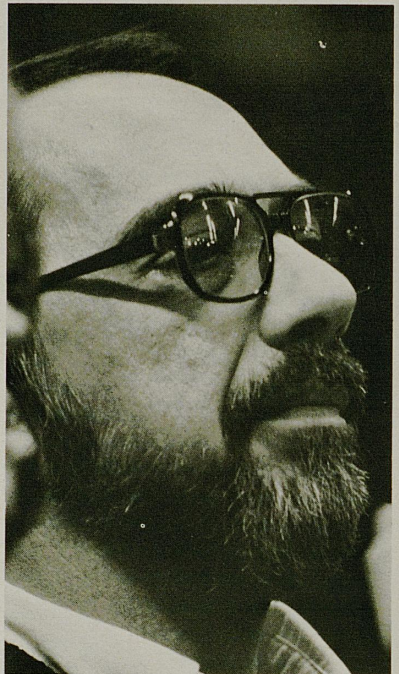
GO CATS YOU "GATO" BELIEVE



 **STONE
FARM**
ARTHUR B. HANCOCK, III
RT. 2, PARIS, KENTUCKY 40361
TELEPHONE (606) 987-3737
WE'RE TRYING TO RAISE YOU A GOOD HORSE!



Faces In Th



Photos By Bill Straus

Take it from the Pros

You can't score points without perfecting the fundamentals—things like timing, execution and team work. At Domino's Pizza we work fast to give our customers 30 minute delivery that's always free. We believe in nutritious, well balanced meals prepared exactly the way you want them.

So give us a call. Domino's Pizza is the champion of free delivery!

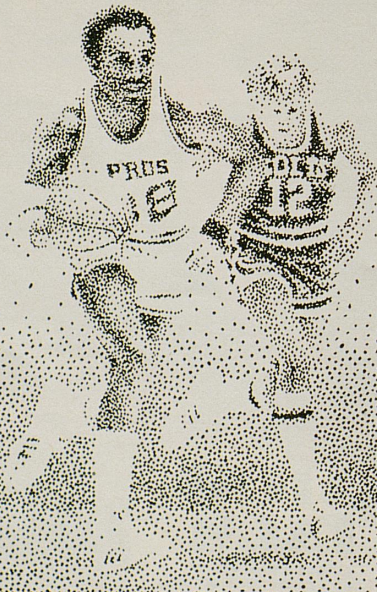


**Domino's
Pizza
Delivers...**

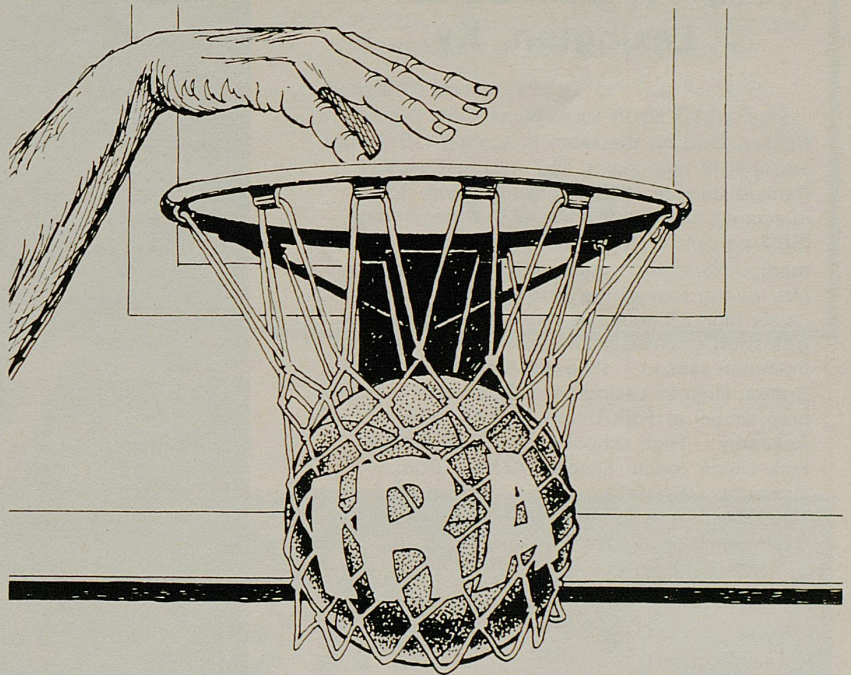
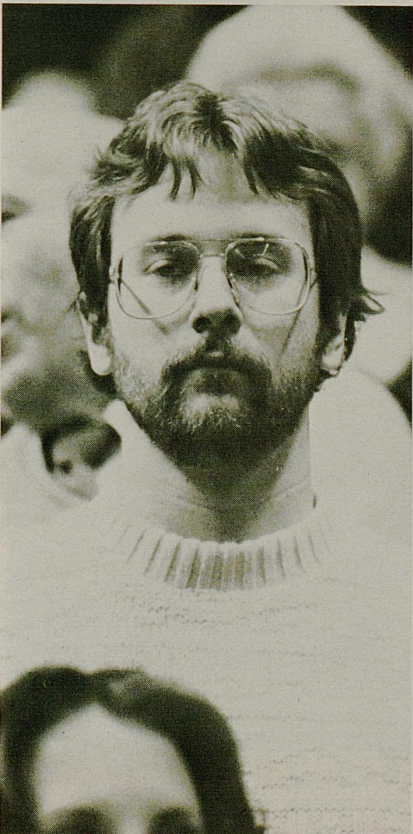
Fast, Free Delivery

Delivery of a delicious pizza in thirty minutes or less.

Drivers carry under \$20.
Limited delivery area.



The Crowd



Take a Tax Break.

You can score big tax savings with an Individual Retirement Account from Central Bank & Trust Co. *And* enjoy a comfortable financial lead when your game plan calls for retirement. Central Bank can set up an IRA that's tailored to boost the economic strengths of you and your family. So you can keep on going strong while you're saving money . . . and taxes!

Get the facts on the tax breaks you get with an IRA. Talk to the folks who are number one in serving your financial needs . . . Central Bank & Trust Co.

 **Central Bank**
Central Bank & Trust Co.
Member FDIC

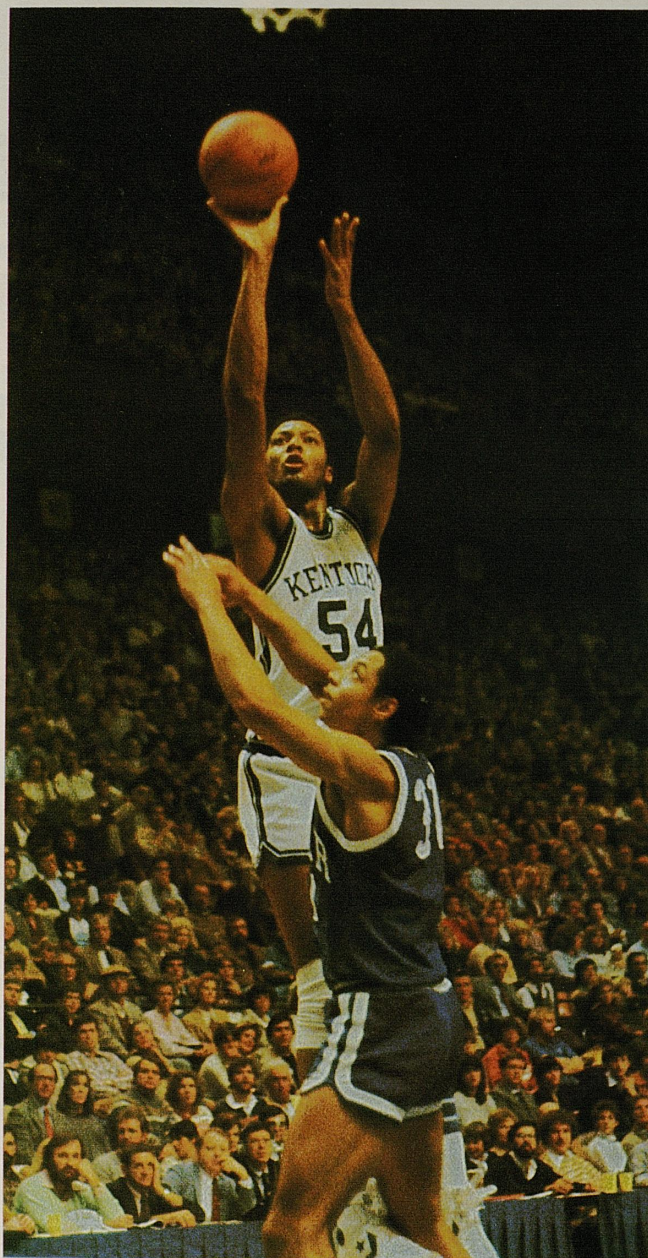
Substantial interest penalty for early withdrawal.



Melvin Turpin - Center

**6-11, 235, Junior
Lexington, Ky.**

Ranked third on the team in scoring (13.1 ppg) and first in rebounding (7.1 rpg) last season... Ranked seventh in SEC in rebounding, 15th in scoring and eighth in field goal percentage (58.2 percent)... Named to players' all-conference team... Received team award for outstanding play during tour of the Orient... Scored career high 28 points at Tennessee last season... Has shown consistent improvement since freshman season... Prep All-America at Bryan Station High in Lexington... Spent one season in prep school at Fork Union (Va.) Military Academy... High school coach: Bob Barlow... Fork Union coach: Fletcher Arritt... Born: December 28, 1960... Major: Arts and Sciences.



Yr.	G-GS	Minutes	Field Goals	Free Throws	Rebounds	A	PF-D	Points	High
Fr. (80-81)	28- 0	380-13.6	50- 95-52.6	31- 44-70.5	106-3.8	1	62-2	131- 4.7	17
So. (81-82)	30-30	912-30.4	160-275-58.2	72-106-67.9	212-7.1	22	90-3	392-13.1	28
Career	58-30	1292-22.3	210-380-55.3	103-150-68.7	318-5.5	23	152-5	523- 9.0	28



Member FDIC
Member Federal Reserve System
Equal Opportunity Lender

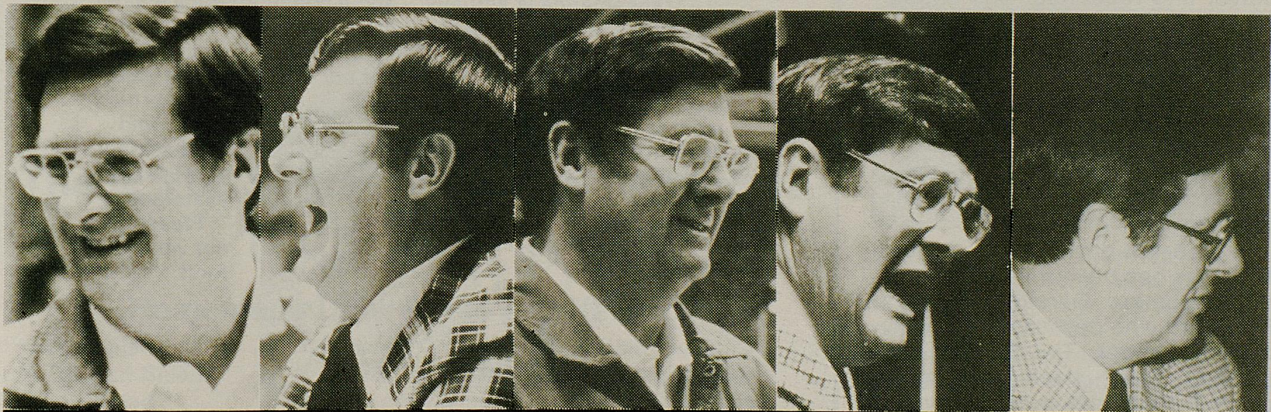
the bank for all the right reasons

The Bank Card Teller...always available when you need quick cash to celebrate a "Big Blue Victory." Your nearest Bank Card Teller can be found at 2500 Nicholasville Road, 755 Newtown Pike and close to campus and the stadium at 720 Euclid Avenue.

You can always count on The Bank of Commerce and its 24-hour Bank Card Teller.



**BANK OF COMMERCE
AND TRUST COMPANY**



The Joe B. Hall Show
with **WKYT Sports Director Rob Bromley**
Sundays on **WKYT-TV, Channel 27, Lexington, KY.**

Georgia Bulldogs

Ambitious Georgia brings a talented, veteran team to Lexington today.

The quarterback of the club is 6-5 junior **Vern Fleming** from New York City. The sleek point guard is leading the team with a 16.1 scoring average and he can also take smaller guards inside. Fleming averages four rebounds a game and he led SEC guards last year in boards with 3.9 per game.

Fleming has started all but two games of his Georgia career and he will be a key man to watch this afternoon.

Another important member of the Bulldog cast is 6-7 center **Terry Fair**, who will have to play bigger than 6-7 against **Melvin Turpin** today. A four-year starter, Fair averages 14.4 points per game and 7.2 rebounds a contest.

Fair signed with Georgia out of Southwest High in Macon, Ga. One of his teammates on that outstanding club was **Jeff Malone**, a scoring whiz for Mississippi State.

Fair is an excellent defensive player and rebounder and shoots selectively from the field.

Junior **James Banks** is Georgia's third leading scorer at 14.2 ppg. The 6-6 Atlantan can bang the boards inside or hit the jumper from outside.

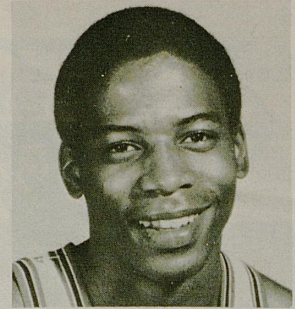
Banks is a streak shooter who can get a team back into a game in a hurry.

A pleasant development for the Bulldogs has been the emergence of sophomore **Gerald Crosby**, a 6-1 guard who possesses a deadly outside jumper. The Birmingham product has been averaging around 10 points a game.

A former sixth man who moved into a starting role this season, **Lamar Heard** plays small forward for Georgia at 6-5. The junior from Cartersville, Ga., is the Dogs' second leading rebounder at 6.4 rpg.

Georgia is short on front-line depth but sophomore **Richard Corhen** is capable at 6-6. He scores nearly five points a game and could play a big role if Georgia develops any foul problems today.

Senior **Derrick Floyd** and freshman **Donald Hartry** provide depth at guard. Floyd is a 6-3 sharpshooter while Hartry is a 6-2 former prep All-American from Milledgeville, Ga.



VERN FLEMING

UNIVERSITY OF GEORGIA ROSTER

No.	Name	Pos.	Class	Ht.	Wt.	Hometown
4	Gerald Crosby	G	So.	6-1	185	Birmingham, Ala.
10	Vern Fleming	G	Jr.	6-5	185	New York, N.Y.
14	Monroe Jones	G	Jr.	5-11	170	Bevinsville, Ky.
20	Derrick Floyd	G	Sr.	6-3	185	Miami, Fla.
22	Horace McMillan	G-F	Fr.	6-5	185	Quincy, Fla.
25	James Banks	F	Jr.	6-6	215	Atlanta, Ga.
30	Donald Hartry	G	Fr.	6-2	170	Milledgeville, Ga.
31	Richard Corhen	F-C	So.	6-6	200	Albany, Ga.
32	Lamar Heard	F	Sr.	6-5	190	Cartersville, Ga.
33	Greg Bozman	F	Fr.	6-7	195	Princess Anne, Md.
34	Troy Hitchcock	C	Fr.	7-2	190	Columbus, Ohio
35	Terry Fair	F-C	Sr.	6-7	210	Macon, Ga.

Head Coach: **Hugh Durham**

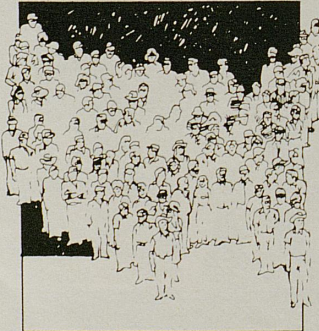
Assistant Coaches: **Don Beasley, Eddie Biedenbach, Larry Gay, Joe Cunningham**

Transamerica is actually much more than a word. We're thousands of people, situated strategically throughout our country, who want to play a major role in your insurance needs and goals.

Call our agency to learn more

about one of America's most creative and valued insurance companies. Specializing in fair prices, fast claims, innovative programs and professional, personalized assistance.

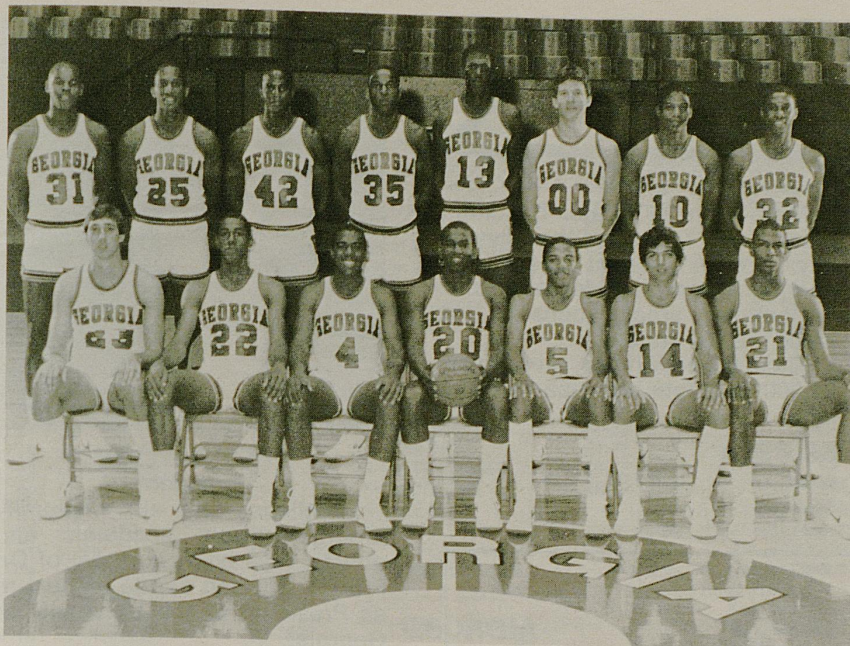
Please take our word for it.



THE FINAL WORD IN SECURITY AND PROTECTION: TRANSAMERICA.

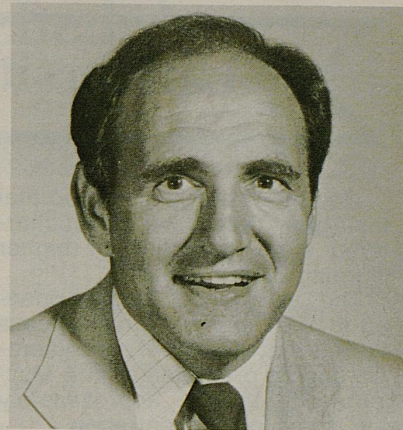
Consult your Yellow Pages for a local agent.

Transamerica
Insurance Services



1982-83 GEORGIA BASKETBALL TEAM

Front row, from left: Sid Truesdale, Horace McMillan, Gerald Crosby, Derrick Floyd, Donald Hartry, Monroe Jones, Joe Ward, Back row, from left: Richard Corhen, James Banks, Mike Morris, Terry Fair, Troy Hitchcock, Greg Bozman, Vern Fleming, Lamar Heard.



HUGH DURHAM
Head Coach

Hugh Durham once took Florida State to the Final Four, but his accomplishments since arriving at Georgia in 1978 are perhaps even more striking.

Now in the closing weeks of his fifth season at Athens, Durham has the Bulldog program solidly at the NIT level and is reaching for NCAA Tournament status.

His last two clubs went to the NIT for the first time in the school's history and this year's team will at least qualify for another berth, if not in the NCAA.

A native of Louisville, Ky., Durham was an assistant at Florida State before becoming head

DURHAM'S GEORGIA RECORD

	W	L	PCT.
1978-79	14	14	.500
1979-80	14	13	.519
1980-81	19	12	.610
1981-82	19	12	.610
UGA CAREER	66	51	.564

coach in 1966. Under his direction, the Seminoles won 231 and lost only 95 games for a sizzling percentage of .709.

Durham attended Florida State out of Eastern High in Louisville and was a three-year starter from 1957-59. He ranks ninth on the FSU all-time scoring list with 1,387 career points.

His 1971-72 squad at FSU won a school-record 27 games and met UCLA in the NCAA Finals at Pauley Pavilion. Durham had three Florida State clubs make the NCAA Tournament.

Durham's never had a losing season at Georgia. His last two Georgia teams each won 19 games, the most for the school since 1940.



Thank You For Making Our Sandwiches

*** No. 1**

Homemade Does Make a Difference

- Tuna Fish
- Chicken Salad
- Egg Salad
- Pimento Cheese
- Potato Salad
- Macaroni Salad
- Cole Slaw
- Cheesecake
- Soups & Salads

We at the Upper Krust are glad you appreciate our homemade foods. This, along with using choice Kosher style meats from Chicago, help create the sandwich you voted the best.

*Lexington Leader Restaurant survey September 1, 1982

UPPER KRUST

393 Waller Avenue-Imperial Plaza
Carry out-Phone 233-1717

Cocktail Lounge Now Open

University of Georgia

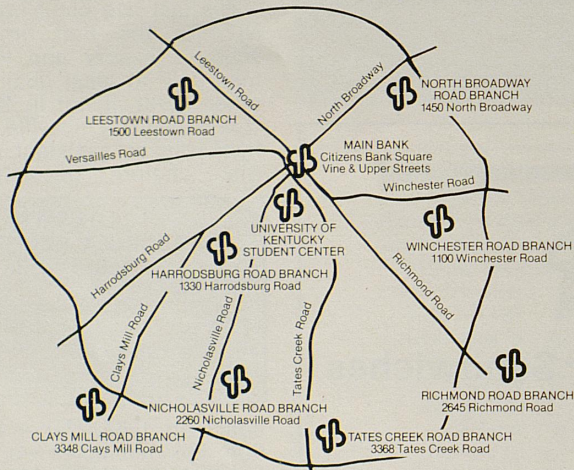
Georgians are justly proud that their University is the oldest chartered state institution of higher learning in the nation.

The University of Georgia opened in 1801 and has grown into a school that offers 14 baccalaureate degree programs and 18 Master's degrees in approximately 125 areas of concentration.

More than 200 major buildings have been added to the University plant in recent years; the campus, including forestry and agriculture areas, consists of some 32,100 acres.

The University has more than 23,000 students and nearly 2,000 faculty members.

10 Convenient Locations



CITIZENS UNION

NATIONAL BANK AND TRUST CO.

Lexington, Ky. 40507, 254-1112

Member Federal Reserve / Equal Opportunity Employer
Equal Credit Opportunity Lender



FRED DAVISON
President

Excellence in all University programs, both academic and athletic, has been the goal of Dr. Fred C. Davison during his tenure as President of the University of Georgia.

He has played an active role in maintaining a diverse and successful athletic program since being named 17th president of the nation's oldest chartered state university on July 1, 1967.



VINCE DOOLEY
Athletic Director

Vince Dooley has served the dual role of Athletic Director and Head Football Coach since July 1, 1979, and has established an enviable record in both positions.

In only his second year as Athletic Director (1980-81), Georgia enjoyed its finest season in overall sports competition. Georgia finished first in Southeastern Conference all-sports competition among women's teams and second in the SEC men's all-sports race. The composite established Georgia as the SEC All-Sports champion.

Growth in a challenging environment.

In the increasingly complex and challenging world of business, employers realize that people are their most important resource. In the development of that resource Meidinger can provide essential services that will generate company growth far into the future.

Meidinger is a national company that helps employers deal with the full range of employee benefit, compensation and communication issues. Meidinger can provide practical, workable programs that will successfully meet the challenges of the business environment.

Remember our name. We're developers of your company's most important resource.

Meidinger

Meidinger, Inc.
Compensation and
Benefit Services
2600 Meidinger Tower
Louisville Galleria
Louisville, KY 40202
502/561-4500



1982-83 KENTUCKY LADY KATS



Front row, left to right: Diane Stephens, Donna Martin, Patty Jo Hedges, Lea Wise, Audre Andrew and Lynnette Lewis. Back row, left to right: Assistant Coach Dottie Berry, Trainer Sue Stanley, Terri Naiser, Valerie Still, Jody Runge, Sally Loughton, Karen Mosley, Leslie Nichols, Lisa Collins, Graduate Assistant Lynn Norenberg and Head Coach Terry Hall.

No.	NAME	POS.	CLASS	HEIGHT	WEIGHT	HOMETOWN
4	Diane Stephens	G	SO.	5-9	138	Louisville
10	Lisa Collins	F	JR.	5-10	142	Corbin
11	Leslie Nichols	F	FR.	6-0	159	Lexington
12	Valerie Still	C/F	SR.	6-1	170	Kansas City, Mo.
13	Patty Jo Hedges	G	SR.	5-7	130	Louisville
14	Lea Wise	G	SR.	5-7	127	Lexington
22	Audre Andrew	G	FR.	5-6	133	Bedford
24	Donna Martin	G	JR.	5-7	143	Lexington
25	Jody Runge	C	JR.	6-2	176	Waukon, Iowa
32	Sally Loughton	C	FR.	6-4	171	Stafford, England
33	Terri Naiser	F	SR.	5-9	171	Louisville
40	Lynnette Lewis	F	JR.	5-9	149	Loyall
44	Karen Mosley	C	FR.	6-3	152	Toledo, Ohio

Head Coach: Terry Hall
Assistant Coach: Dottie Berry
Graduate Assistant: Lynn Norenberg

Trainer: Sue Stanley
Managers: Michele Oberst, Heather Longton, Mie Nishigori

DATE	OPPONENT	SITE
Nov. 27	CINCINNATI	84-76
Dec. 2	OHIO STATE	73-60
Dec. 5	MIAMI UNIVERSITY	90-61
Dec. 8	Indiana	85-72
Dec. 21	EAST TENN. STATE	97-52
Dec. 19	CHARLESTON	106-81
Dec. 21	FLORIDA	71-66
Jan. 3	Memphis State	71-75
Jan. 6	MIDDLE TENN. ST.	73-68
Jan. 10	TENNESSEE TECH	102-67
Jan. 14	SOUTH FLORIDA	93-65
Jan. 15	ARKANSAS	77-43
Jan. 18	Alabama	104-77
Jan. 20	Louisville	79-66
Jan. 23	Vanderbilt	106-85
Jan. 26	DePaul	72-48
Jan. 30	GEORGIA	66-59
Feb. 2	SOUTH CAROLINA	89-77
Feb. 5	OLD DOMINION	80-66
Feb. 9	TENNESSEE	85-95
Feb. 12	VANDERBILT	80-71
Feb. 16	Rutgers	89-80
Feb. 18	AUBURN	77-55
Feb. 20	Georgia	81-99
Feb. 22	Florida	78-63
Feb. 27	Tennessee	Away
Mar. 3-6	SEC Championships at Tennessee	

All Home Games at Memorial Coliseum.
*7:30 p.m.

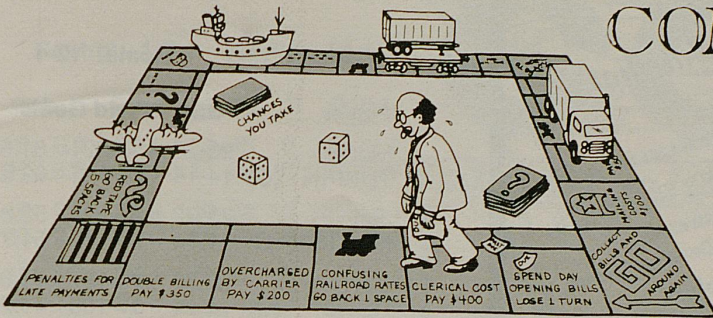


Terry Hall is in her third season at the helm of the nationally ranked Lady Kats.

She was head coach at the University of Louisville for five years, building an impressive 79-53 record and winning a Metro Conference championship. At U of L she gained substantial experience in various levels of womens' sports.

Her 13-year coaching career began at Butler High School in Louisville. Her first college coaching assignment was at Eastern Kentucky University. The Indiana State graduate earned a Master's degree in P.E. from Eastern.

The Freight Game: Play to WIN with COMPUTREX, INC.



Pre-Audit & Complete Freight
Payment Services

Data-Base Management
Studies

Prominent National Clientele —
both large & small

Charles E. Buxton, President

P. O. BOX 13020 • LEXINGTON, KY 40582 • (606) 252-5624

Ralph Lauren

Polo®

dawahares

GARDENSIDE * FAYETTE MALL * LEXINGTON MALL



men's
women's
and
children's



JOE BOLOGNA'S



103 W. Maxwell
252-4933

Richmond Road
at Lakeview Plaza
269-6332

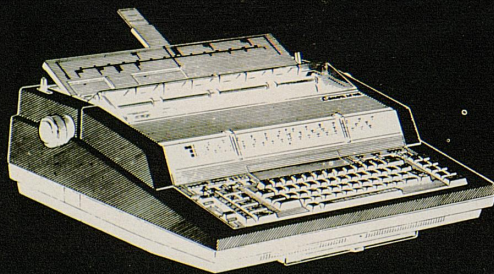
365 Southland
277-6155



Woodland at Euclid Avenues

Canon AP 500

ELECTRONIC TYPEWRITER



**Copiers
 Duplicators
 Electronic
 Typewriters
 Word/Info
 Processors
 Supplies
 Paper**

A.B. Dick Products of Lexington

1982-83 UNIVERSITY OF BASKETBALL STATISTICS

Overall: 18-5 Home: 12-1 Away: 5-4

Player	G-GS	Field Goals	Free Throws		
Melvin TURPIN (C)	23-23 14-14	136-221- 91-145-	61.5 62.8	67- 98- 51- 72-	68.4 70.8
Jim MASTER (C)	23-22 14-14	122-229- 77-149-	53.3 51.7	38- 46- 29- 34-	82.6 85.3
Derrick HORD (C)	23-23 14-14	97-187- 51-108-	51.9 47.2	62- 75- 24- 29-	82.7 82.8
Dirk M'FIELD (C)	23-23 14-14	78-148- 44- 85-	52.7 51.8	38- 49- 25- 31-	77.6 80.6
Charles HURT (C)	23-21 14-14	79-126- 42- 73-	62.7 57.5	35- 51- 20- 31-	68.6 64.5
Kenny WALKER (C)	23- 0 14- 0	56- 88- 42- 65-	63.6 64.6	39- 59- 36- 47-	66.1 76.6
Dicky BEAL (C)	17- 1 8- 0	27- 47- 8- 17-	57.4 47.1	34- 46- 9- 13-	73.9 69.2
Bret BEARUP (C)	23- 2 14- 0	33- 70- 16- 29-	47.1 55.2	14- 22- 8- 15-	63.6 53.3
Troy McKIN'Y (C)	18- 0 11- 0	17- 33- 11- 22-	51.5 50.0	3- 4- 3- 4-	75.0 75.0
Tom HEITZ (C)	15- 0 8- 0	4- 8- 2- 4-	50.0 50.0	9- 12- 4- 4-	75.0 100.0
Roger HARDEN (C)	19- 0 12- 0	4- 19- 3- 16-	21.1 18.8	3- 4- 2- 2-	75.0 100.0

Other TEAM 5- 11 4- 6

KENTUCKY 23 658-1187- 55.4 346-472-73.3 745- 3
 (C) 14 387- 713- 54.3 211-282-74.8 438- 3

OPPONENTS 23 583-1381- 42.2 258-389-66.3 727- 3
 (C) 14 375- 839- 44.7 167-250-66.8 437- 3

Deadball Rebounds: UK-64, C

MINUTES PLAYED: Minniefield 709-30.8, Master 699-
 27.6, Hord 628-27.3, Walker 391-17.0, Beal 256-15-
 7.3, McKinley 103-5.7, Heitz 76-5.1, Other 33

BLOCKED SHOTS: Turpin 70, Walker 13, Bearup 6,
 Beal 1, Hord 1, UK-98, Opp.-45

HIGH SCORING GAMES: Turpin 42 (Tennessee-A);
 (Vanderbilt-A), Walker 23 (Miss. State-H), Min
 bama-A), Hurt 15 (Villanova and Indiana), Be
 and Miss State-H), Heitz 4 (Butler), McKinley 4 (

SITY OF KENTUCKY STATISTICS (23 Games)

Th	Reb.	PF-D	A	TO	S	Points
98- 68.4	143- 6.2	60-1	14	45	9	339-14.7
72- 70.8	92- 6.6	43-1	11	30	6	235-16.8
46- 82.6	45- 2.0	26-0	46	38	12	282-12.3
34- 85.3	30- 2.1	16-0	29	25	8	183-13.1
75- 82.7	89- 3.9	35-1	40	50	18	256-11.1
29- 82.8	47- 3.4	23-0	21	36	12	126- 9.0
49- 77.6	74- 3.2	67-1	150	79	33	194- 8.4
31- 80.6	44- 3.1	48-1	76	47	20	115- 8.2
51- 68.6	113- 4.9	54-1	30	26	23	193- 8.4
31- 64.5	60- 4.3	33-0	23	19	13	104- 7.4
59- 66.1	108- 4.7	43-0	13	19	10	151- 6.6
47- 76.6	79- 5.6	32-0	12	17	6	120- 8.6
46- 73.9	25- 1.5	30-0	45	28	11	88- 5.2
13- 69.2	11- 1.4	9-0	18	10	2	25- 3.1
22- 63.6	48- 2.1	38-1	21	8	3	80- 3.5
15- 53.3	22- 1.6	20-1	11	3	2	40- 2.9
4- 75.0	14- 0.8	2-0	3	3	0	37- 2.1
4- 75.0	5- 0.5	1-0	0	2	0	25- 2.2
12- 75.0	8- 0.5	17-0	3	9	2	17- 1.1
4- 100.0	4- 0.5	9-0	1	7	0	8- 1.0
4- 75.0	14- 0.7	18-0	20	21	2	11- 0.6
2- 100.0	9- 0.8	15-0	17	15	2	8- 0.7
6	10	0-0	1	4	1	14
	54			1		

2-73.3 745- 32.4 390- 5 386 331 124 1662-72.3
2-74.8 438- 31.3 249- 3 219 214 72 985-70.4

9-66.3 727- 31.6 462-22 306 291 165 1424-61.9
0-66.8 437- 31.2 273-12 195 172 104 917-65.5

nds: UK-64, Opp.-48

, M aster 699-30.4, Turpin 695-30.2, Hurt 635-
O, B eal 256-15.1, Bearup 286-12.4, Harden 139-
O ther 33

B, B earup 6, Hurt 4, Minniefield 2, Master 1,

enn essee-A); Hord 26 (Villanova); Master 26
Stal e-H), Minniefield 17 (Tulane and Ala-
Ind iana), Beal 14 (Illinois), Bearup 10 (Butler
Mo Kinley 4 (Six Times), Harden 2 (Five Times)

INTRODUCING

G.O.Q.

GRAB ONE QUICK!



FOODTOWN introduces "G.O.Q."—supermarket specials that are **so** super special, you've got to "Grab One Quick" before they disappear!

Each week, Foodtown makes some extra special deals with manufacturers and suppliers and speeds the savings down the line to you—so grab one quick.

Look for the specially marked "Grab One Quick" displays in your neighborhood Foodtown (expiration dates will be indicated for each item). Grab one quick, because at prices like these, they'll be gone before you can say "G.O.Q."

FOODTOWN

SUPER MARKETS



for Wildcat Action



Depend on
WHAS
Radio 84

Depend on
WHAS
Radio 84



Depend on
WHAS
Radio 84



Campbell Home Furnishings

where bargains and beauty go hand in hand

"Featuring Names You Know & Trust"

Pennsylvania House •
Thomasville • Davis Cabinet Co.
Serta • Stiffel • Council
Craftsman

Decorator
Service
Available

TOLL FREE

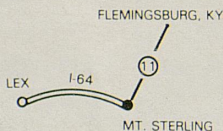
255-7511

MT. STERLING RD.
FLEMINGSBURG, KY

FLEMINGSBURG

845-5231

OPEN DAILY 8 AM - 8 PM
SUNDAYS 1 PM - 6 PM

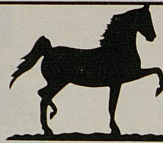


Visit Our New
Catalog Showroom
490 New Circle Rd.
233-2242

HOURS: 10 - 8 Mon.-Fri.
10 - 6 Daily
1 - 6 Sunday

"Eastern Kentucky's Largest Selection
of Home Furnishings and Biggest Savings
are only 58 minutes from Lexington"

Free Delivery within 50 miles



TURF TOWN
properties, inc.

274 Southland Dr., Suite 204

Lexington, Kentucky 40503

(606) 278-9315

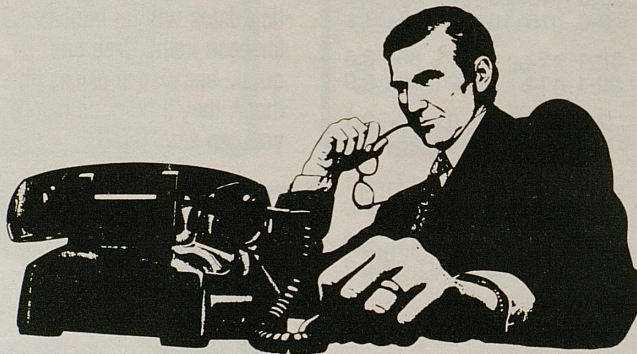
Offering choice Bluegrass residential & farm
properties

MULTIPLE LISTING SERVICE
MLS

Edith Dillon, GRI, CRS
Broker



When Your Business Depends On A Phone System...



Depend On General Telephone.

We are the phone company.
We know PABXs, Key Systems, and
any other type of telephone your
business needs.

Now, we are offering you an option of
lease-purchase or direct ownership.

If you need a few phones or several
hundred phones, call...

General Telephone— *THE* phone company.

General
Telephone

GTE

**Guests from all over the world
continue to rave about our
resort hotel.
NOW, IT'S YOUR TURN!**

**SPECIAL ROOM RATE FOR
CENTRAL KENTUCKIANS ONLY**

\$39

We've set aside a limited number of luxurious rooms for folks living within 150 miles of us; call and make your reservation—NOW—and present this coupon when you check in.

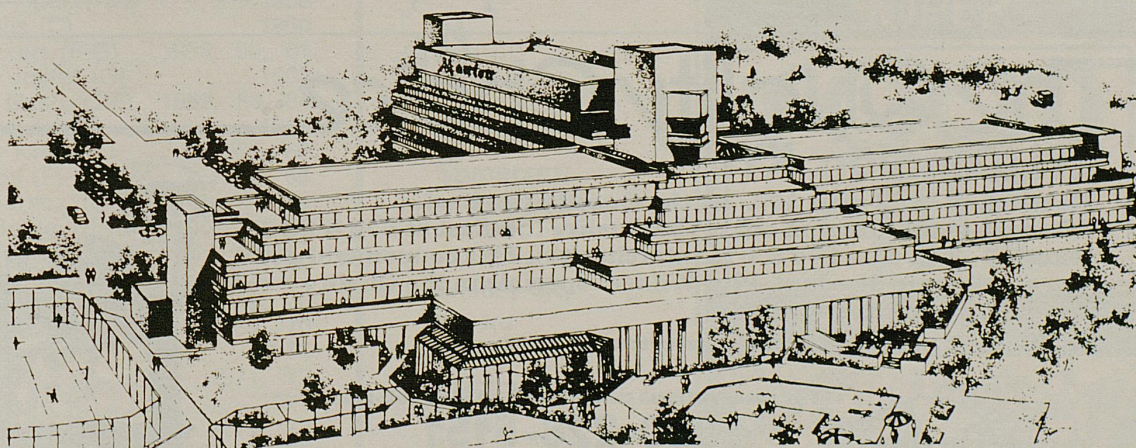
thru March 31, 1983
plus applicable taxes

Lexington Marriott Resort Griffin Gate

For reservations and information call 606/231-5100

- **Deluxe accommodations**
- **Indoor pool, saunas, health club and whirlpool**
- **Excellent restaurants and lounges**
- **Other packages available—many inclusive of meals, gratuity and taxes**
- **Subject to availability**

This rate does not apply to groups and is not commissionable. Limited number of rooms available.



Lexington Marriott Resort Griffin Gate

1800 Newtown Pike, Lexington, Kentucky 40511

INDEX OF ADVERTISERS

A	G	P
A. B. Dick 64	Godfather's Pizza 77	Pappagallo 10
A. C. Brake 74	Griffin Gate Realty..... 45	Provident Mutual 23
Airdrie Farm 37	GTE 66	
Air Systems, Inc. KU-3		
Alchemy Farm 47	H	Q
Ale 8 72	Harbor Freight Salvage..... 15	Quality Inn 68
American Bank 74	Harris & Co. 79	
American Dairy Association..... 24-25	Heinsmith 16	R
Arby's 6	Host Communications, Inc..... 78	Radisson Hotel 13
Ashland Oil 20	Hubbuck in Kentucky..... 30	Richmond Place 22
		Rolling Ridge Apartments..... 19
		Rosenberg Jewelers 3
		Ryder Trucks 80
B	J	S
Bank of Commerce 57	Joe Bologna's Pizza..... 63	Second National Bank..... 26
Begley Drug 26	Jonabell Farm 43	Sleepy Head House..... 75
Bluegrass Bottling Co. 40		Spendthrift Farm 5
Brown & Williamson..... Inside Front Cover		Stone Farm 53
		Swiss Colony 51
C	K	T
Campbell Home Furnishings..... 66	Kentucky Air National Guard..... 17	Tom Gentry Farm..... Back Cover
Campbell House Inn..... 30		Toyota of Lexington..... 13
Casa Executiva 80		Transamerica 58
Central Bank 55		Turfland Mall 21
Citizens Fidelity Bank..... 2		Turftown Properties 66
Clay Ward Agency..... 33	L	T. W. Lee's 23
Cliff Hagan's Ribeye..... 3	La Quinta Motor Inn..... 71	
Coca-Cola 40-41	LeRoy's Jewelers 8	
Computrex 63	Lexington Clinic 73	
Comtel 39	Lexington Herald- Leader..... Inside Back Cover	
Conrad Chevrolet 30	Library Lounge 64	
Cracker Barrel 72	Long John Silver's..... Color Insert	
	Lexington Crown 70	
	Lundy's Catering 73	
		U
		UK Summer Camps..... 78
		United American Bank..... 60
		Upper Krust 59
		V
		Valvoline 20
		W
		Walmac-Warnerton Farm 39
		Wal-Mart 76
		Wendy's 35
		Weneker's 51
		WHAS Radio 65
		WKYT-TV 57
		WLAP Radio 51
D	M	
Dairy Farm Families of Ky..... 24-25	Marathon Oil 79	
Dairy Farm Families of Ky..... KU-4-25	Marriott Hotel 67	
Dawahare's 63	McDonald's 31	
Dixie Beer 69	Meidinger 62	
Domino's Pizza 54	Mid-State Distributing 1	
Duff's Smorgasbord 75		
		N
		National Tire Wholesale 49
		New Balance Shoe..... 27
		New York Life..... 7
E		
Fayette Mall 11		
Food Fair-Somerset 69		
Foodtown 65		
4th Street Implement..... 33		
Freedom Dodge 75		

The Quality Choice in Lexington, KY!

Have a ball. And save 10%. At the Quality Inn East.
After the game, head on out to the Quality Inn East at I-75 & US 60 (exit 110—just past I-64 & I-75 interchange). This coupon will get you a 10% room discount. Plus Wildcat specials in the Quality restaurant and tavern.

Quality Inn East I-75 & US 60, Lexington, KY 40511

For reservations call 606-293-1431 or toll-free:

800-228-5151

The Quality Choice.



UK Players Selected To ALL-SEC

(59) Players Chosen 106 Times)

Ellis Johnson (G)	1933
Forest Sale (C)	1933
John DeMoisey (F)	1933, '34
Bill Davis (G)	1934
Leroy Edwards (C)	1935
Dave Lawrence (F)	1935
Ralph Carlisle (F)	1936, '37
Warfield Donohue (G)	1937
Bernie Oppen (G)	1938, '39
Layton Rouse (G)	1940
Lee Huber (G)	1941
James King (C)	1941
Marvin Akers (F)	1941, '43
Ermal Allen (F)	1942
Melvin Brewer (C)	1943
Bob Brannum (C)	1944
Jack Parkinson (G)	1944, '45, '46
Jack Tingle (F)	1944, '45, '46, '47
Kenton Campbell (C)	1945
Ralph Beard (G)	1946, '47, '48, '49
Wallace Jones (F)	1946, '47, '48, '49
Joe Holland (F)	1947
Alex Groza (C)	1948, '49
Kenny Rollins (G)	1947, '48
Jim Line (F)	1950
Bill Spivey (C)	1950, '51
Walt Hirsch (F)	1951
Shelby Linville (F)	1951
Bobby Watson (G)	1951, '52
Frank Ramsey (G)	1951, '52, '54
Cliff Hagan (C)	1952, '54
Bill Evans (G-F)	1955
Bob Burrow (C)	1955, '56
Johnny Cox (F)	1957, '58, '59
Vernon Hatton (G)	1958
Don Mills (C)	1960
Bill Lickert (F-G)	1959, '60, '61
Larry Pursiful (G)	1962
Cotton Nash (C-F)	1962, '63, '64
Ted Deeken (F)	1964
Tommy Kron (G)	1965, '66
Pat Riley (F)	1965, '66
Thad Jaracz (C-F)	1966
Larry Conley (F)	1966
Louie Dampier (G)	1965, '66, '67
Mike Casey (G)	1968, '69, '71
Dan Issel (C)	1968, '69, '70
Mike Pratt (F)	1969, '70
Larry Steele (F)	1971
Tom Parker (F)	1971, '72
Tom Payne (C)	1971
Jim Andrews (C)	1972, '73
Kevin Grevey (F)	1973, '74, '75
Jack Givens (F)	1976, '77, '78
Rick Robey (F)	1977, '78
Kyle Macy (G)	1978, '79, '80
Sam Bowie (C)	1980, '81
Derrick Hord (F)	1982

**FIGHTING
WILDCATS
BEER**

**THERE'S NOTHING MORE
KENTUCKY THAN WILDCAT!**

Not associated with the University of Kentucky
Distributed by Forum Distributors, Lexington, KY

*"Friendly
Service All the
Way to Your Car."*

Serving

Somerset:

North 27
Downtown
Greenhill

Whitley City

Hazard

Jackson

Stanford

Hyden

Corbin

Mt. Vernon

Pineville

London

**SUPER
FOOD
FAIR
MARKETS**



*Good luck
to the
Wildcats
from*

**HEAVEN
HILL
DISTILLERS**

The BEST
of the Great
KENTUCKY
BOURBONS

Distributed by
**LEXINGTON
CROWN, INC.**
2497 Palumbo Drive
Lexington, KY 40509

*The Value of
Tradition*



CLIFF HAGAN



LOUIE DAMPIER



KEVIN GREVEY

**TOP ALL-TIME KENTUCKY SCORERS
VARSITY CAREER**

(The 1,000 Point Club)

Player—Pos.	Years	Points	Games	Average
1. Dan Issel (C)	3 (1968-70)	2,138	83	25.7
2. Jack Givens (F)	4 (1975-78)	2,038	123	16.6
3. Kevin Grevey (F)	3 (1973-75)	1,801	84	21.4
4. Cotton Nash (C-F)	3 (1962-64)	1,770	78+	22.69
5. Alex Groza (C)	4 (1945, 47-49)	1,744	120	14.4
6. Louie Dampier (G)	3 (1965-67)	1,575	80	19.7
7. Mike Casey (G)	3 (1968-69-71)	1,535	82	18.7
8. Ralph Beard (G)	4 (1946-49)	1,517	139	10.8
9. Cliff Hagan (C)	2 (1951-52, 54)	1,475	77	19.2
10. Pat Riley (F)	3 (1965-67)	1,464	80	18.3
11. Johnny Cox (F)	3 (1957-59)	1,461	84	17.3
12. Kyle Macy (G)	2 (1978-80)	1,411	98	14.4
13. Rick Robey (F-C)	4 (1975-78)	1,395	105	13.3
14. Mike Phillips (C)	4 (1975-78)	1,367	120	11.4
15. Mike Pratt (F)	3 (1968-70)	1,359	81	16.8
16. Frank Ramsey (G)	3 (1951-52, 54)	1,344	91	14.7
17. Jim Andrews (C)	3 (1971-73)	1,320	80	16.5
18. Tom Parker (F)	3 (1970-72)	1,238	80	15.5
19. Bill Spivey (C)	2 (1950-51)	1,213	63	19.2
20. Vernon Hatton (G)	3 (1956-58)	1,154	76	15.1
21. Wallace Jones (F)	4 (1946-49)	1,151	98*	—
22. Bill Lickert (F-G)	3 (1959-61)	1,076	73	14.7
23. Jim Line (F)	4 (1947-50)	1,041	100*	—
24. Bob Burrow (C)	2 (1955-56) +	1,023+	51	20.0
25. Jimmy Dan Conner (F-G)	3 (1973-75)	1,009	85	11.9
26. Bobby Watson (G)	3 (1950-52)	1,001	96	10.4

* No record for number of games played in 1947.

+ Achieved membership in club earliest of any Wildcat, hitting 1,000th point in the 19th game of junior year.

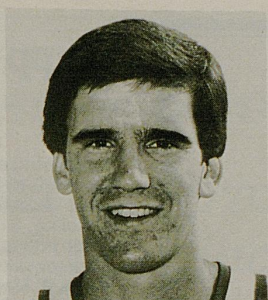
+ Kentucky career totals only. Junior College total of 2,191 points not included.

TOP REGULAR SEASON SCORERS

Player—Pos.	Year	Games	FG	FT	TP	Avg.
Dan Issel (C)	1970 (Sr.)	26	339	198	876	33.7
Dan Issel (C)	1969 (Jr.)	26	269	159	697	26.8
Cotton Nash (C-F)	1964 (Sr.)	25	233	149	615	24.6
Kevin Grevey (F)	1975 (Sr.)	26	265	99	629	24.2
Cliff Hagan (C)	1954 (Sr.)	25	234	132	600	24.0
Cotton Nash (C-F)	1962 (Soph.)	24	205	161	571	23.8
Jim Andrews (C)	1972 (Jr.)	26	224	120	568	21.9
Kevin Grevey (F)	1974 (Jr.)	25	232	83	547	21.9
Pat Riley (F)	1966 (Jr.)	25	225	91	541	21.6
Louie Dampier (G)	1966 (Jr.)	25	211	99	521	20.8
Cliff Hagan (C)	1952 (Jr.)	26	206	128	540	20.8
Jack Givens (F)	1976 (Soph.)	26	216	105	537	20.7
Louie Dampier (G)	1967 (Sr.)	26	219	99	537	20.6
Cotton Nash (C-F)	1963 (Jr.)	25	176	162	514	20.6
Mike Casey (G)	1968 (Soph.)	25	215	76	506	20.2



JACK GIVENS



KYLE MACY



SAM BOWIE

KENTUCKY'S ALL-AMERICANS

NAME	POS.	YEAR	HOMETOWN
BASIL HAYDEN	Forward	1921	Paris, Ky
BURGESS CAREY	Guard	1925	Lexington, Ky.
CAREY SPICER	Forward	1929-30	Lexington, Ky.
PAUL McBRAYER	Guard	1930	Lawrenceburg, Ky.
FOREST SALE	Center-Forward	1932-33	Lawrenceburg, Ky.
ELLIS JOHNSON	Guard	1933	Ashland, Ky.
JOHN DeMOISEY	Center	1934	Walton, Ky.
LeROY EDWARDS	Center	1935	Indianapolis, Ind.
BERNARD OPPER	Guard	1939	New York, N. Y.
LEE HUBER	Guard	1940-41	Louisville, Ky.
BOB BRANNUM	Center	1944	Winfield, Kan.
JACK PARKINSON	Guard	1946	Yorktown, Ind.
RALPH BEARD	Guard	1947-49	Louisville, Ky.
ALEX GROZA	Center	1947-49	Martins Ferry, Ohio
WALLACE JONES	Forward	1949	Harlan, Ky.
BILL SPIVEY	Center	1951	Warner Robins, Ga.
CLIFF HAGAN	Center	1952, 54	Owensboro, Ky.
FRANK RAMSEY	Guard	1952, 54	Madisonville, Ky.
BOB BURROW	Center	1956	Wells, Texas
VERNON HATTON	Guard	1958	Lexington, Ky.
JOHNNY COX	Forward	1959	Hazard, Ky.
COTTON NASH	Center-Forward	1962-64	Lake Charles, La.
PAT RILEY	Forward	1966	Schenectady, N. Y.
LOUIE DAMPIER	Guard	1966	Indianapolis, Ind.
DAN ISSEL	Center	1969-70	Batavia, Ill.
KEVIN GREVEY	Forward	1974-75	Hamilton, Ohio
JACK GIVENS	Forward	1976-78	Lexington, Ky.
RICK ROBEY	Center	1977-78	New Orleans, La.
KYLE MACY	Guard	1979-80	Peru, Ind.
SAM BOWIE	Center	1981	Lebanon, Pa.

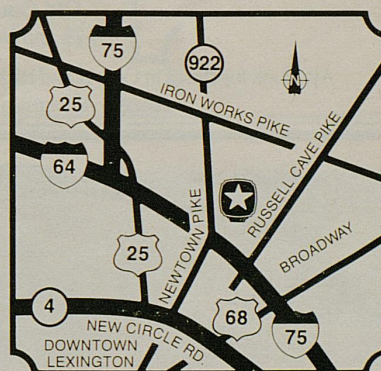
Wake up to La Quinta Sports Fans!

People who travel a lot are waking up to La Quinta (La KEEN ta) Motor Inns for quality, comfort and value across the United States.

La Quinta Motor Inn Lexington

1919 Stanton Way
I-64/75 Newtown Pike Exit.
606-231-7551

Only 3 miles from Rupp Arena
6 miles from the
University of Kentucky



- 130 rooms with color TV, AM/FM radio, extra long beds, direct dial phones
- All major credit cards accepted

**Nationwide
Toll Free
Reservations
800-531-5900**



Over 100 locations and growing.
From Florida to California, in the Midwest
and Rocky Mountain areas.

© 1982, La Quinta Motor Inns, Inc. 8/82.
Traded on the New York Stock Exchange.

The Cracker Barrel Old Country Store. Country cookin' the way it was.

Before or after the game, when it's down-home Southern cookin' you're looking for, we hope you'll look no further than the Cracker Barrel Old Country Store. Big country breakfasts and Country Dinner Plates with home-style meats and a garden of country vegetables are our specialties.

Open Sunday through Thursday from 6 a.m. til 10 p.m.
Friday and Saturday from 6 till 11.



Old Country Store
I-75 and Newtown Road

Also look for stores in Corbin and Richmond. Plus, we're all through Tennessee, Georgia, Alabama and South Carolina, too.



KENTUCKY'S UNIQUE SOFT DRINK
SALUTES AMERICA'S NUMBER ONE TEAM

Rupp Arena Records

(Collegiate-Varsity)

Team—Single Game

Consecutive Wins—30 by Kentucky (Nov. 29, 1980 to Mar. 6, 1982).

Most Points—126 by Kentucky vs. South Carolina, 81 (Dec. 10, 1979).

Most Points by Kentucky Opponent—91 by Jacksonville, Dec. 18, 1981.

Biggest Margin of Victory for Kentucky—50 (Kentucky 103, TCU 53, Dec. 2, 1976).

Biggest Margin of Defeat for Kentucky—14 (Alabama 78, Kentucky 64, Jan. 12, 1980).

Smallest Margin of Victory for Others—2 (Utah 70, Kentucky 68, Dec. 18, 1977).

Smallest Margin of Defeat for Others—1 (Kentucky 61, Purdue 60—UKIT—Dec. 22, 1979).

Most Points, Both Teams—202 (Kentucky 114, Portland State 88—UKIT—Dec. 16, 1977).

Most Points in One Half—66 by Kentucky in second half vs. West Texas State, Dec. 4, 1978.

Fewest Points—47 by Tennessee vs. Kentucky 48, Jan. 10, 1981.

Most FGA's, Both Teams—163 (Kentucky 82 vs. Vanderbilt 81, Feb. 5, 1977).

Most Field Goals Made—46 by Kentucky vs. Portland State, Dec. 16, 1977.

Best FG Pct. (Game)—68.0 (34 of 50) by West Virginia vs. Bowling Green, Dec. 18, 1977 (UKIT).

Best FG Pct. (First Half)—78.6 (11-14) by Kentucky vs. Mississippi, Jan. 14, 1981.

Best FG Pct. (Second Half)—83.3 (15 of 18) by Kentucky vs. Mississippi State, Feb. 28, 1977.

Most Free Throws Attempted—56 by Kentucky vs. Miss State, Feb. 12, 1979.

Most FTA's, Both Teams—97 (Kentucky 48, Vanderbilt 49, Jan. 19, 1980).

Most Free Throws Made—44 by Kentucky vs. Vanderbilt, Jan. 19, 1980.

Most Free Throws Missed—19 by Kentucky vs. Wisconsin, Nov. 27, 1976 and vs. Portland State, Dec. 16, 1977.

Most Rebounds—62 by Kentucky vs. Bowling Green, Dec. 17, 1976.

Fewest Points, Both Teams—94 (Alabama 48, Kentucky 46, Mar. 6, 1982).

Most Personal Fouls—41 by La Salle vs. Kentucky, Dec. 2, 1978.

Most Personal Fouls, Both Teams—75 (UK 32, La Salle 43, Dec. 2, 1978).

Largest Crowd—24,165* (Kentucky vs. Indiana, Dec. 8, 1981).

Individual—Single Game

Most Points—39, Freeman Williams, Portland State vs. Kentucky (UKIT), Dec. 16, 1977.

Most Field Goal Attempts—40 by Freeman Williams, Portland State vs. Kentucky, (UKIT) Dec. 16, 1977.

Most Field Goals Made—17 by Freeman Williams, Portland State vs. Kentucky, (UKIT) Dec. 16, 1977.

Most Free Throws Attempted—23 by Dwight Anderson, Kentucky vs. Miss. State, Feb. 12, 1979. Made 18.

Most Free Throws Made—18 by Dwight Anderson, Kentucky vs. Miss. State, Feb. 12, 1979.

(CONSECUTIVE—12 by Kyle Macy vs. Vanderbilt and Mike Rhodes of Vanderbilt vs. Kentucky, Jan. 19, 1980).

Most Rebounds—19 by Mike Phillips, Kentucky vs. LSU, Jan. 22, 1977; and Bernard King, Tennessee vs. Kentucky, Jan. 12, 1977.

Fitness & Sports Medicine Center

Fitness Programs Sports Medicine
Cardiac Rehabilitation

Established to provide comprehensive fitness evaluations, fitness programs and rehabilitation for both individuals and teams.

Complete range of evaluation and improvement programs under **constant medical supervision** utilizing cybex equipment, exercise treadmills and the physical therapy department.

Lexington Clinic, P.S.C.



1221 South Broadway/Lexington, Kentucky 40504/606/255-6841

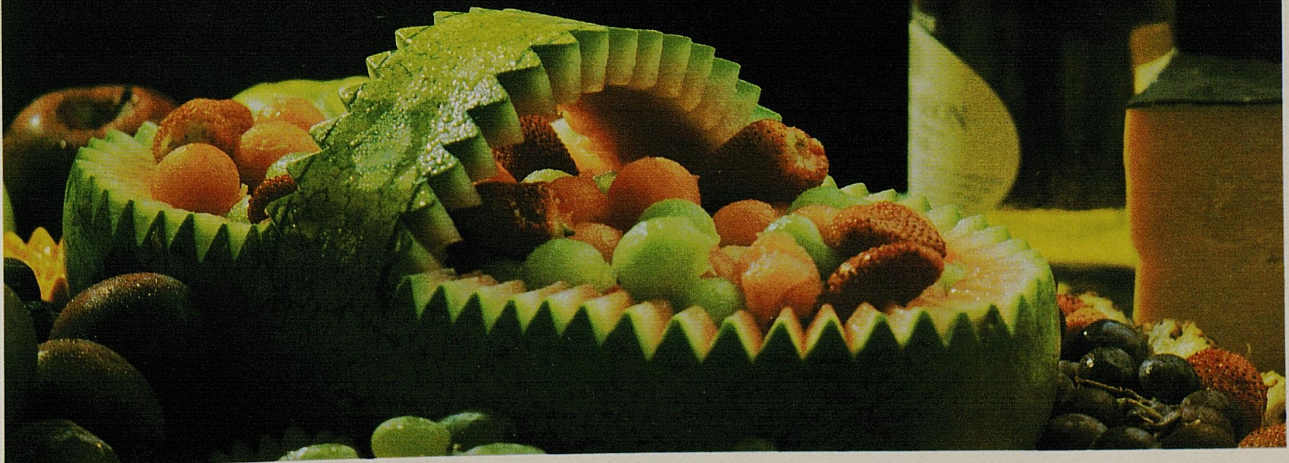


LUNDY'S

CATERING

Lexington, Kentucky (606) 255-0717

Not The Oldest But The Best



A Leader
in a Changing Time.
Discover the American Difference

 **american bank**
and trust company


Corporate Center, Short & Upper, Codell & Woodhill

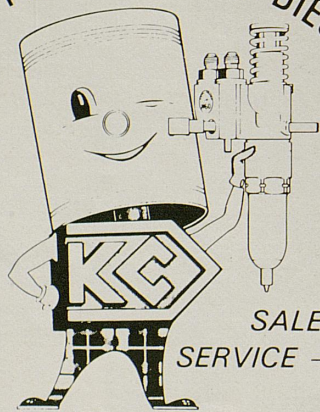
JIM'S
SEAFOOD RESTAURANT
LOCK 4 — KENTUCKY RIVER

THE
FINEST SEAFOOD
AVAILABLE IS A
SHORT DRIVE AWAY
★ COCKTAILS ★

950 WILKINSON BLVD.
FRANKFORT

REPLACEMENT PARTS FOR GM DIESEL ENGINES

INSIST
ON
GENUINE

QUALITY



SALES —
SERVICE — RENTAL

KORODY COLYER



A-C BRAKE CO., INC.

308 E. College St. Louisville, Kentucky 502/584-5226



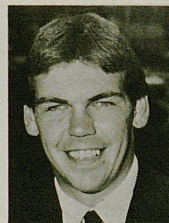
WALT McCOMBS
Assoc. Trainer

Assigned to basketball, McCombs joined the UK staff in 1972 and returned in 1977 after a three-year stint at Clemson. A native of Belton, S. C., he is a 1971 graduate of The Citadel.



BILL KEIGHTLEY
UK Basketball
Equipment Mgr.

An eight-year staff member, Bill was graduated from Kavanaugh High School in Lawrenceburg, Ky. A mail-carrier for the U. S. Postal Service, he is married to the former Hazel Robinson of Lawrenceburg.



JEFF RILEY
Volunteer Coach

Jeff Riley, a native of Wheelwright, Ky., is in his first season with the Wildcat basketball program. An All-State selection at Wheelwright High, Riley initially signed with Georgia Tech and transferred to Morehead State.



ROGER THOMAS
Head
Student Mgr.

After serving two years as an assistant manager, Roger Thomas is in his second season as head student manager. He is a native of Chattanooga, Tenn.

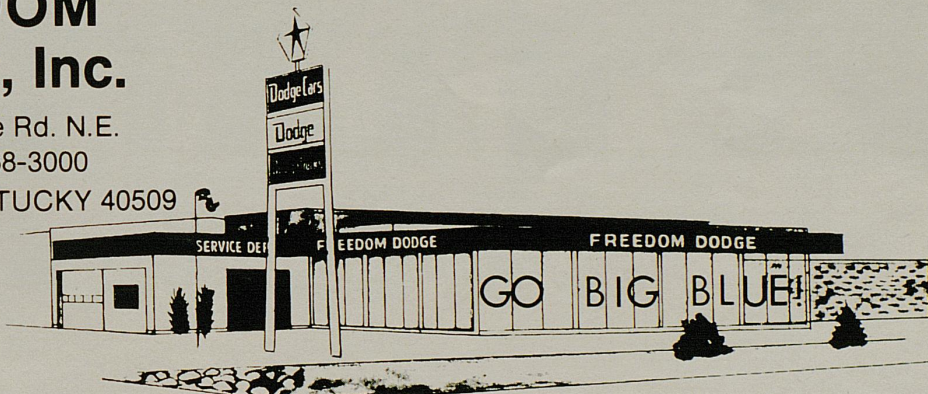
We're proud to serve you
all you care to eat for one
low
price!



321 Eastland Shopping Center • Lexington, Kentucky

**FREEDOM
DODGE, Inc.**

1560 New Circle Rd. N.E.
Telephone 268-3000
LEXINGTON, KENTUCKY 40509



YOU'LL LIKE THE WAY WE DO BUSINESS!

**Sleepy Head
HOUSE**

418 West Short Street
ACROSS FROM THE OPERA HOUSE
(Side Entrance)

Featuring
FINE HOME FURNISHINGS
SEALY AND SERTA BEDDING



"Where People Shop For Quality And Don't Mind Paying A Little Less®"

The 1982-83 UK Cheerleading Squad



The 1982-83 UK Cheerleaders: (on floor, from left) Julie Billington, Murray; Steve Gibson, Lexington; Tom Creasey, Paris; Lee Ackiss, Lexington; Don Ware, Louisville; Jimmy Mortimer, Glasgow; Jeff Gothard, Lexington; Lorea Towery, Lake Oswego, Ore. (forming pyramid, from left) Holly Bankemper, Ft. Thomas; Tomi Anne Blevins, Williamson, W. Va.; UK Mascot Dean Paris, Grand Rapids, Mich.; Lisa Perkins, Lexington; Kim Calvert, Lexington.

Wal-Mart Sells for Less • Wal-Mart Sells for Less • Wal-Mart Sells for Less • Wal-Mart Sells for Less • Wal-Mart Sells for Less

A great Wildcat basketball team includes dedication of both players and staff, and a game plan

WAL-MART

Wal-Mart's game plan includes careful handling, never dropping the ball, and prompt courteous service

Among our many locations visit:

Winchester • Richmond • Danville • Frankfort • Somerset • Campbellsville • Bardstown • Elizabethtown

20 other locations in the state with more on the way

Wal-Mart Sells for Less • Wal-Mart Sells for Less • Wal-Mart Sells for Less • Wal-Mart Sells for Less • Wal-Mart Sells for Less

there's nobody's pizza like **Godfather's Pizza**™



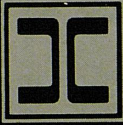
1424 Alexandria Drive
231-0666

2950 Richmond Road
269-9641

348 Southland Drive
276-5384

Home delivery from all locations

UK Students call 231-0666



HOST COMMUNICATIONS, INC.

**Marketing, Public Relations,
Association & Meeting Management,
Radio Sports Broadcasting:
HOST COMMUNICATIONS, INC.**

**Typesetting, Design & Printing:
ART CRAFT PRESS
REES PRINTING**

**Meeting & Convention Service:
THE LEXINGTON CONNECTION**

**Radio, T.V. Production & Broadcasting:
COLONY COMMUNICATIONS
CAWOOD LEDFORD PRODUCTIONS**

120 Kentucky Avenue • Lexington, Kentucky 40502 • (606) 253-3230

Summer Camps At UK

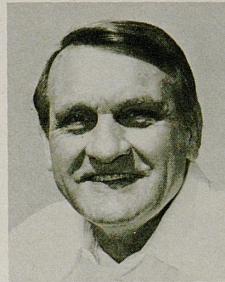
**Ninth Annual
Kentucky
Wildcat
Basketball
Camp**



Coach Joe B. Hall

**1983 Summer Sessions
June 12 - 17 June 19 - 24**

**For Free Brochure Write:
Kentucky Wildcat Basketball Camp
Memorial Coliseum
University of Kentucky
Lexington, KY 40506
or phone: (606) 257-1916**



Coach Jerry Claiborne

**Fourth Annual
Kentucky
Wildcat
Football
Camp**

**1983 Session:
June 5 - 10 UK Campus**

(Age 11 Through High School Jr.)

**FOR APPLICATION &
INFORMATION WRITE:
WILDCAT FOOTBALL CAMP
COMMONWEALTH STADIUM
UNIVERSITY OF KENTUCKY
LEXINGTON, KY 40506-0222**



the spirit to excel

Best in the Long Run



Your insurance needs are unique

Putting a finger on the program that matches your needs is our principal concern



*Call UK alumni
James Harris and
W. Grant Lewis*

No two insurance programs *should* be identical. If they are, they may be in the wrong hands. When a program is tailored to your operation, your risks, your goals, and your perception of value, it can't be exactly like anyone else's. So don't become a victim of mistaken identity. At Harris & Co. you deal with a principal of the firm who recognizes your individuality, and whose experience is best suited to your field. And you deal with a buyer, who knows where to go for the coverage you need.

If this system for identifying your insurance needs makes sense to you, we hope you'll call us.

Harris & Co.

Buyers of Insurance

9th Floor
Starks Building
Louisville, Kentucky 40202
502 584-2193

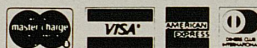
RENT A RYDER TRUCK AND SAVE.

Save about 50% of the cost of a moving company by renting a Ryder truck and moving it yourself. Save still more in time, trouble and aggravation by renting a truck from the best-maintained, most dependable fleet in the world: Ryder's. Save in peace of mind by knowing your Ryder truck is sturdy, dependable and up to the job. Save time and effort with the built-in loading ramp that's part of each Ryder move-it-yourself truck. Isn't that enough savings for you?

Branch Office
233-7836

West 259-0784
East 269-5376
S. East 255-5109

RYDER. THE BEST TRUCK MONEY CAN RENT.



"STATE OF THE ART" Dining

Casa Executiva

(EXECUTIVE HOUSE)



Relax and enjoy . . .

Simply put, we offer the ultimate in elegant dining . . . from tantalizing appetizers to a provocative offering of unusual American, Continental or Italian dishes, complemented by an incomparable selection of choice vintage wines and cocktails.

At Casa Executiva, we invite you to savor selections from a menu which is a cut above the rest . . . including veal, lamb, quail, lobster, scampi, frog legs, steaks, beef Wellington, dover sole and pasta (fettucine Alfredo, tortellini, cavatelli, mannicotti, canelloni, etc.).

Then the finish . . . a delectable selection from our pastry cart or a flaming dessert (bananas Foster, cherries jubilee, baked alaska, etc.). Experience all of this in the elegant atmosphere of a restored 18th century mansion.

We're the ONLY Lexington gourmet restaurant with full tableside service.

Casa Executiva. ASK ANYBODY!

...the ultimate dining experience

*OPEN FOR DINNER ONLY *ALL MAJOR CREDIT CARDS HONORED

*FREE PARKING *RESERVATIONS-254-6263
253-1174

"Casa Executiva" located at 270 South Limestone (Limestone at Maxwell)

NET WORTH



To Kentucky Wildcat fans, the net worth of tonight's action is directly related to more than just the bottom-line score. Kentucky basketball connoisseurs want to know the details behind the action . . . on the hardwood and in the locker room.

That's why more and more Kentuckians daily turn to the sports pages of the *Lexington Herald-Leader*. From the spicy commentary of D.G. FitzMaurice to the hardwood savvy of Mark

Bradley to the colorful play-by-play reports of Jerry Tipton, your *Herald-Leader* covers all the angles and delivers the action right to your front door.

When it comes to Kentucky basketball coverage, the net worth of your *Lexington Herald-Leader* is second to none.

For home delivery information, telephone 253-1314 or toll free 1-800-432-9548.

LEXINGTON HERALD-LEADER



Tom Gentry, Keeneland's leading consignor, and consistently among the leading North American breeders, has bred, raced, and/or sold eight stakes horses in 1982 alone. Mr. Gentry's outstanding 1983 sale consignments will be offered at the Keeneland July, September, and November vendues.

Good Luck U.K. Wildcats
from
Tom Gentry.

Tom Gentry Farm • Harp-Innes Pike • Lexington, Ky. 40511
(606) 299-6657