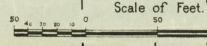
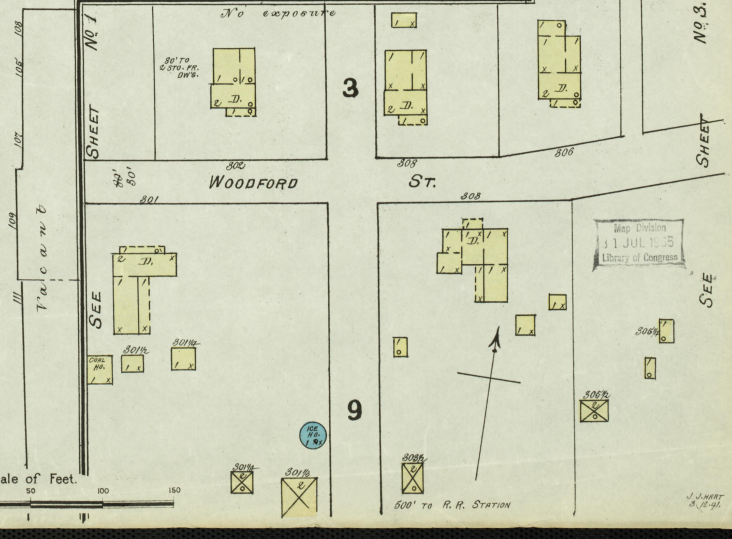
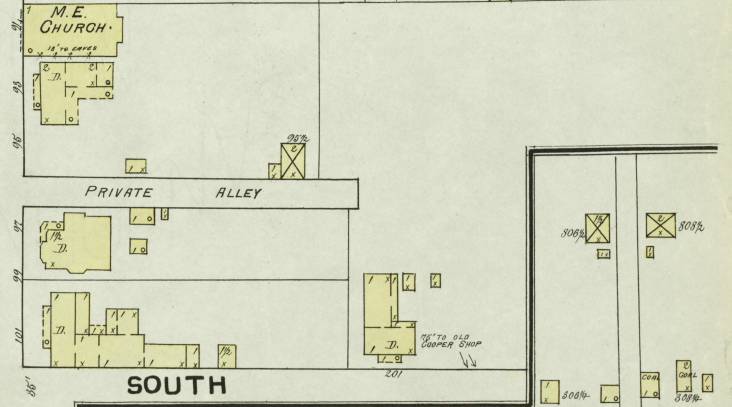
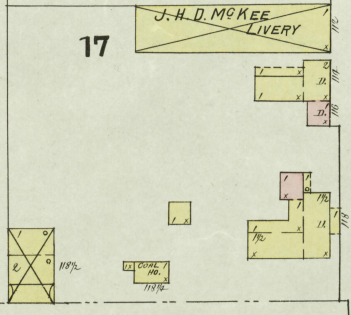
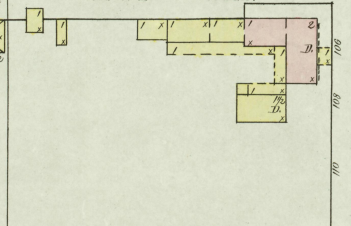
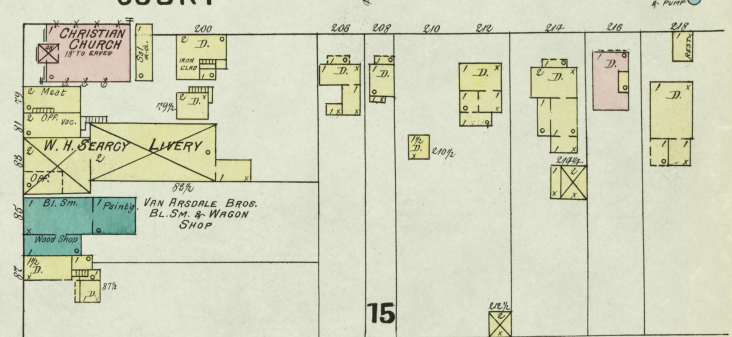
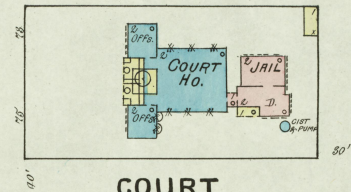
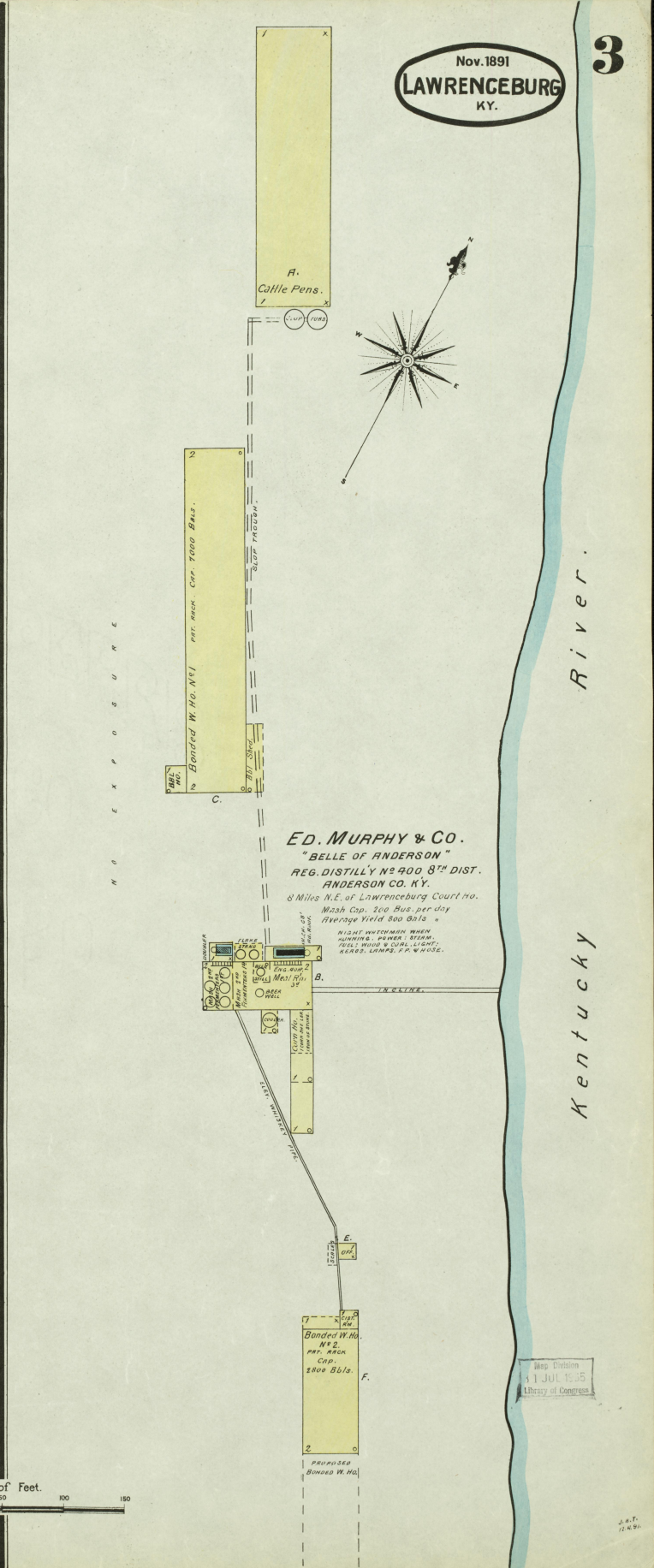
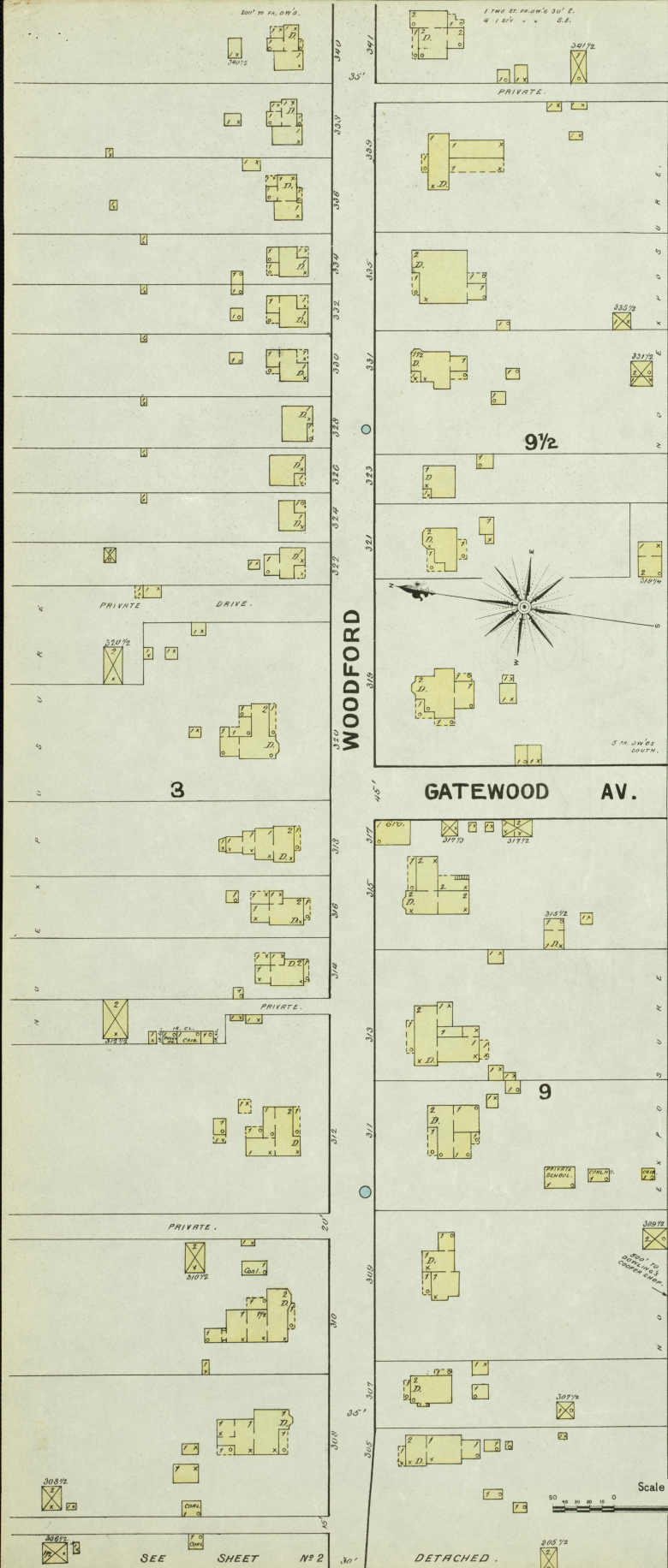


MAIN







SEE SHEET No 2

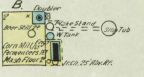
DETACHED.

Scale of Feet.

J. & T. 10 1891



No Exposure any side



HAWKINS & BRO.  
REG. DISTILLY. NO. 7. 5<sup>TH</sup> DIST. ANDERSON CO. KY.  
MASH CAP. PER DAY 25 BUS.  
IN FIELD 5000 GALS.  
BOILER WATCHMAN, PULLEY, CONVEYER,  
STEAM, TO MATCHING MACHINES, POWER, STEAM,  
FUEL, WOOD & COAL, FLOUR, NO. 10.  
7 1/2 Miles From Court Ho.

GILBERTS CREEK

ALL CATTLE FENS ARE NOW  
LOCATED AT DISTILLERY NO. 10  
1/2 MILE N. SLOP TO BE PUMPED  
TO THEM.

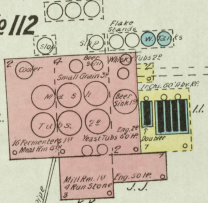
KENTUCKY RIVER

LAWRENCEBURG & VERSAILLES PIKE

KENTUCKY RIVER

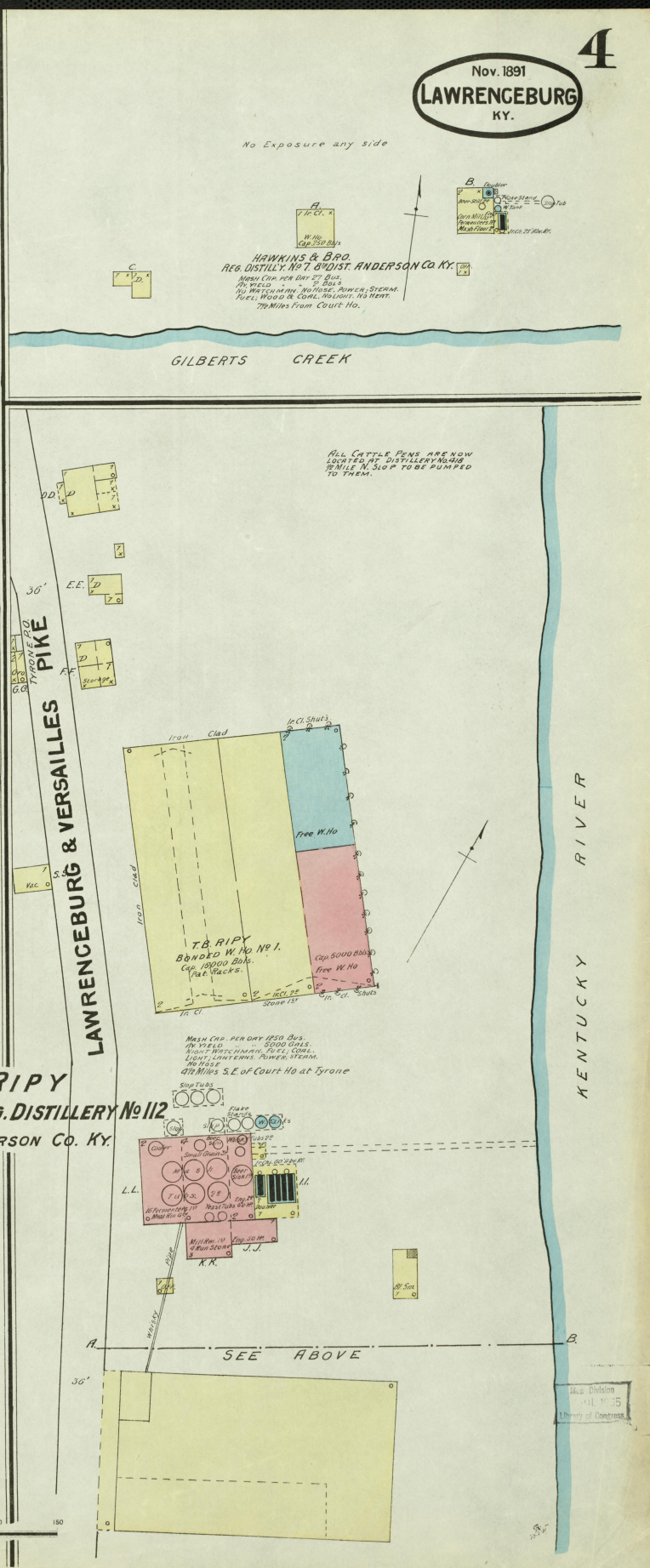
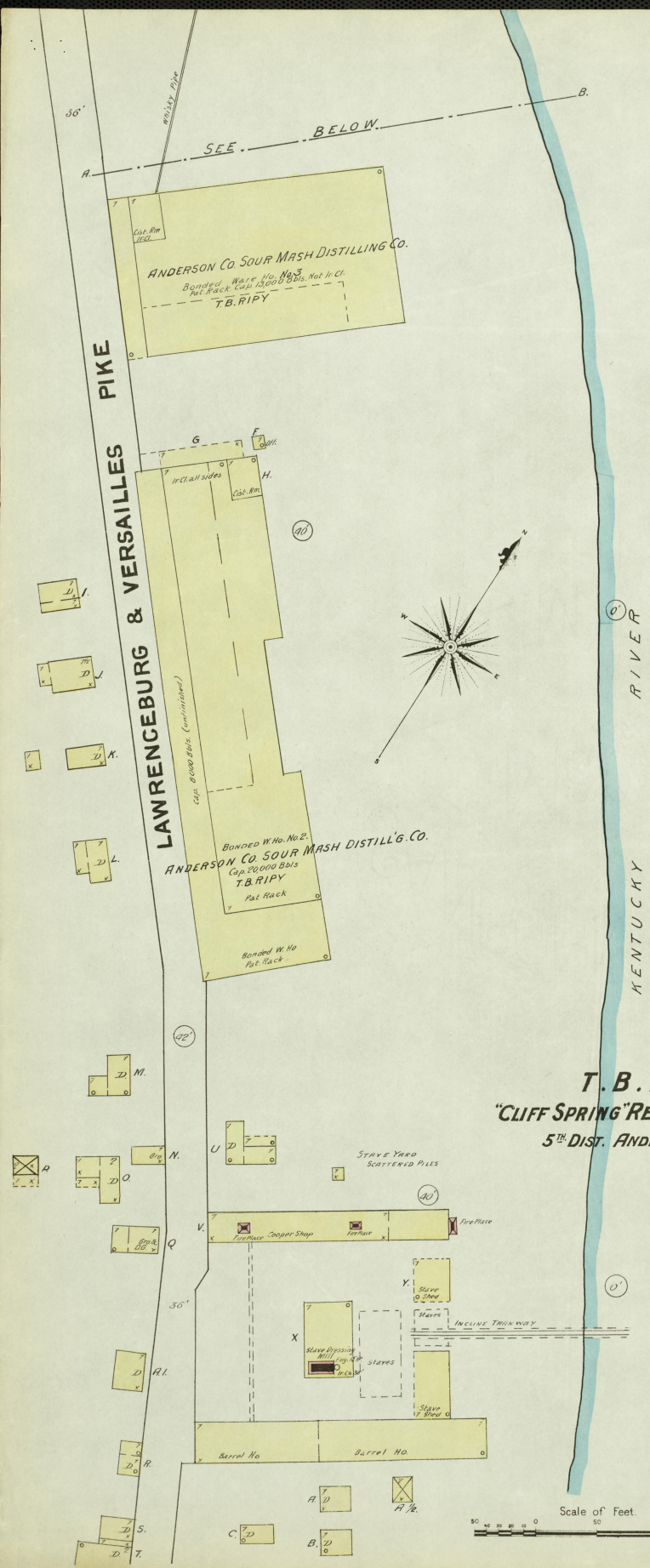
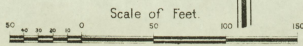
**T. B. RIPPY**  
"CLIFF SPRING" REG. DISTILLERY No. 112  
5<sup>TH</sup> DIST. ANDERSON CO. KY.

MASH CAP. PER DAY 1250 BUS.  
IN FIELD 5000 GALS.  
BOILER WATCHMAN, PULLEY, CONVEYER,  
LIGHT, LANTERNS, POWER, STEAM,  
NO. 10  
4 1/2 Miles S.E. of Court Ho at Tyrone

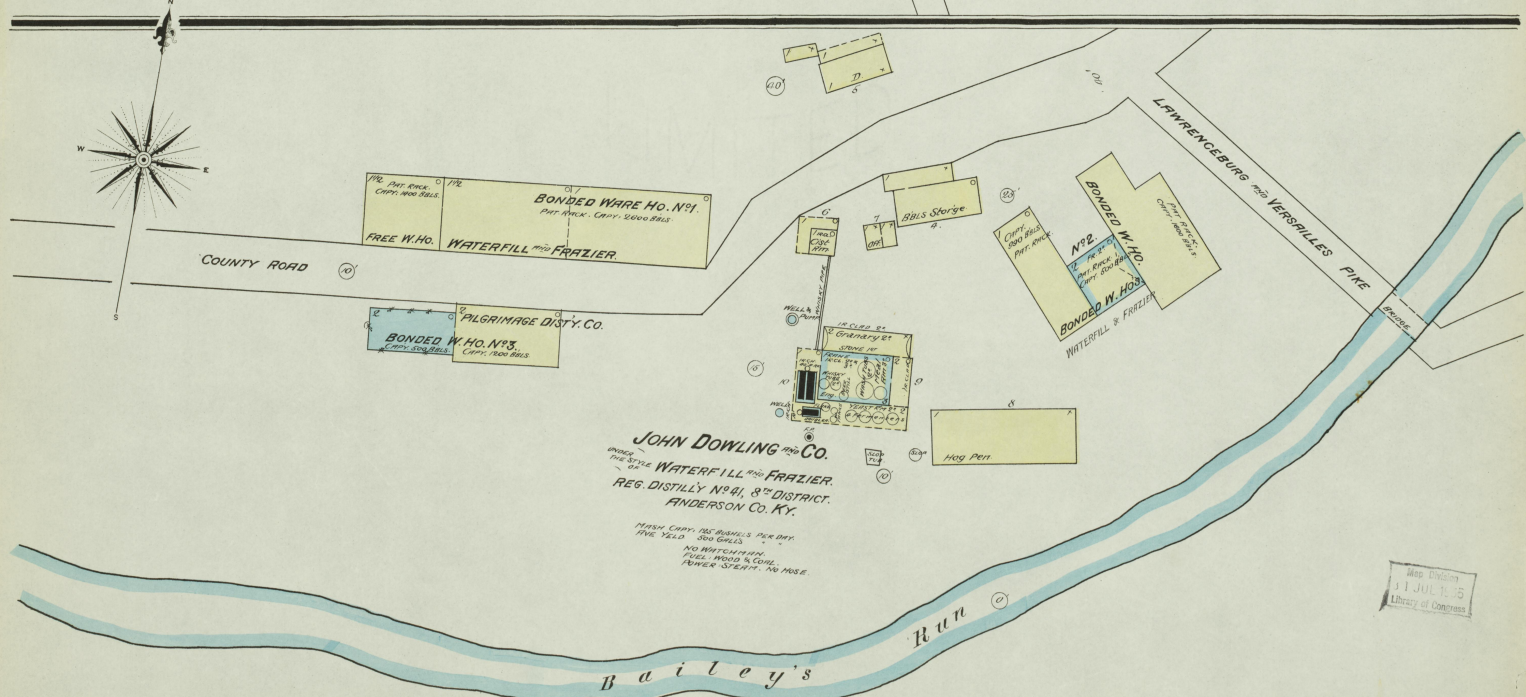
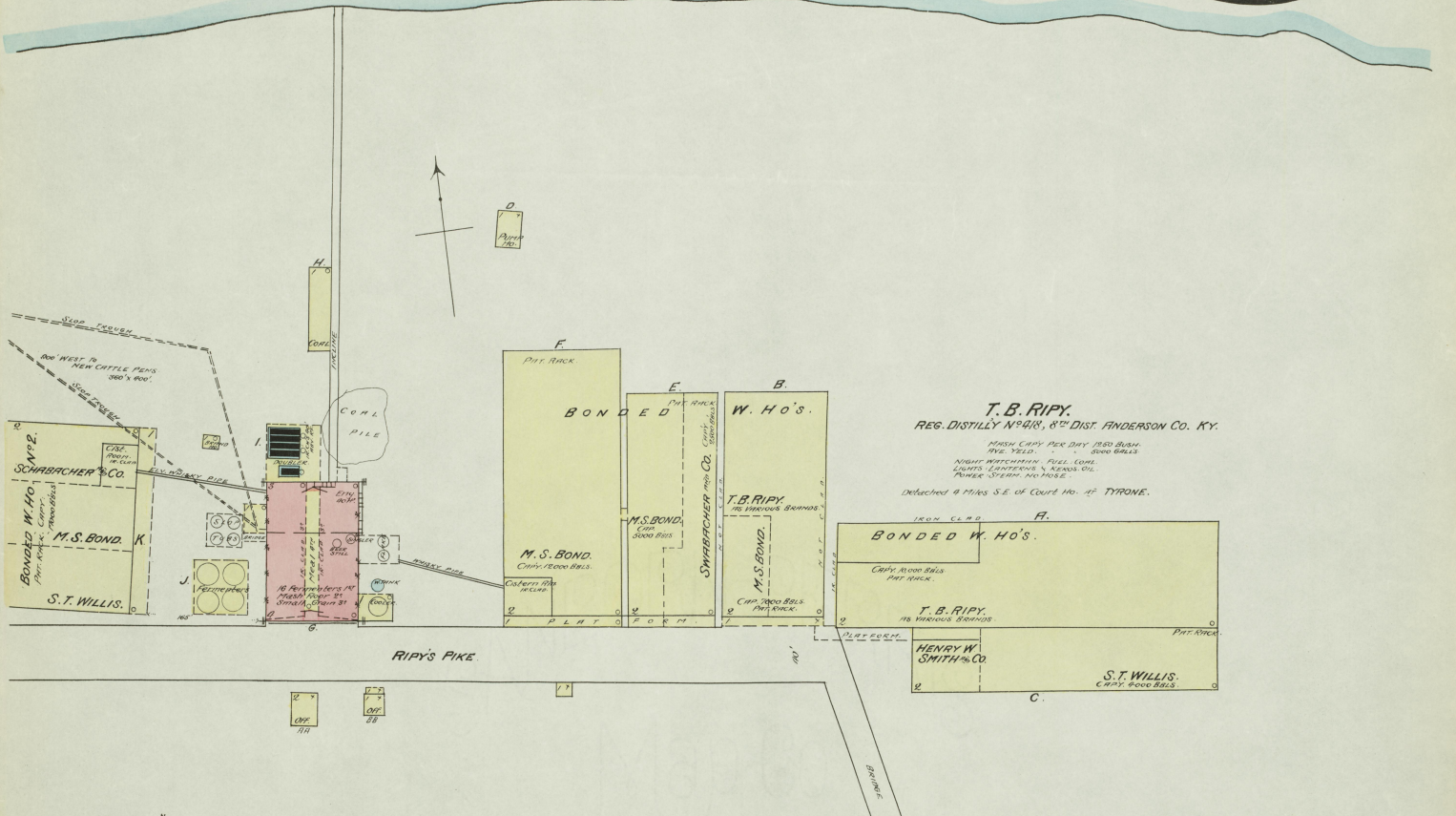


SEE ABOVE

Map Division  
April 1935  
Library of Congress



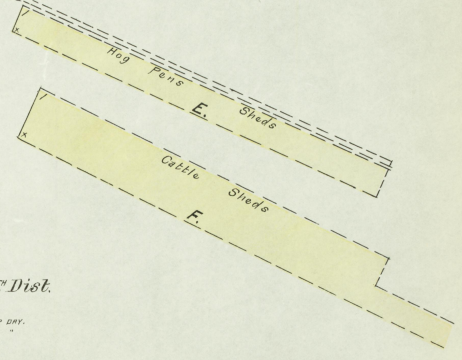
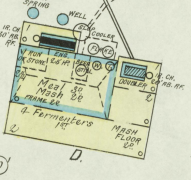
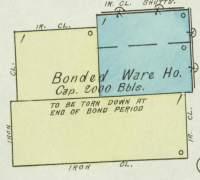
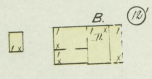
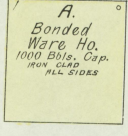
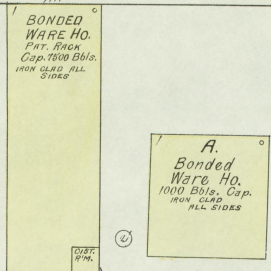
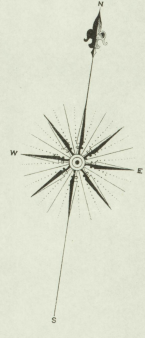




See Distillery  
11 JUL 1895  
Library of Congress



COUNTY ROAD

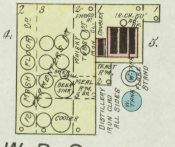
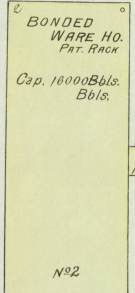
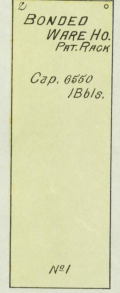


**J. R. WALKER**  
 Reg. Distillery No. 434, 8<sup>th</sup> Dist.  
 Anderson Co. Ky.  
 HAND MADE SOUP WAGON,  
 REEN CAP. 1500 BUSH. PER DAY.  
 TIELS FOR 1000 GALS.  
 WATCHMAN LIGHTS, LAMP,  
 RIGS, SONG, PUMPS, STEAM,  
 NO HEATING.

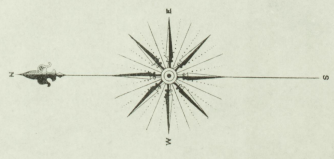
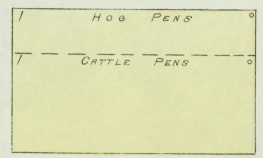
Detached 1 Mile N.E. of Court Ho.  
 No Exposure any Side

EAST TENNESSEE VIRGINIA & GEORGIA R.R.

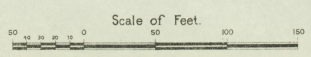
TRAFSILE



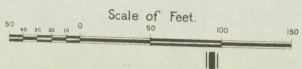
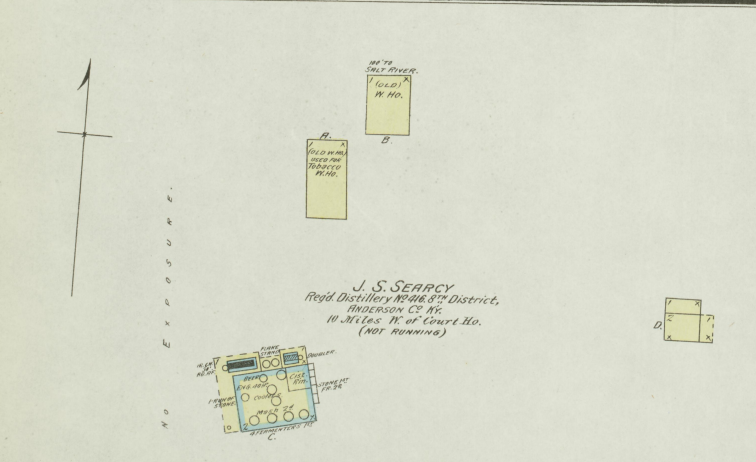
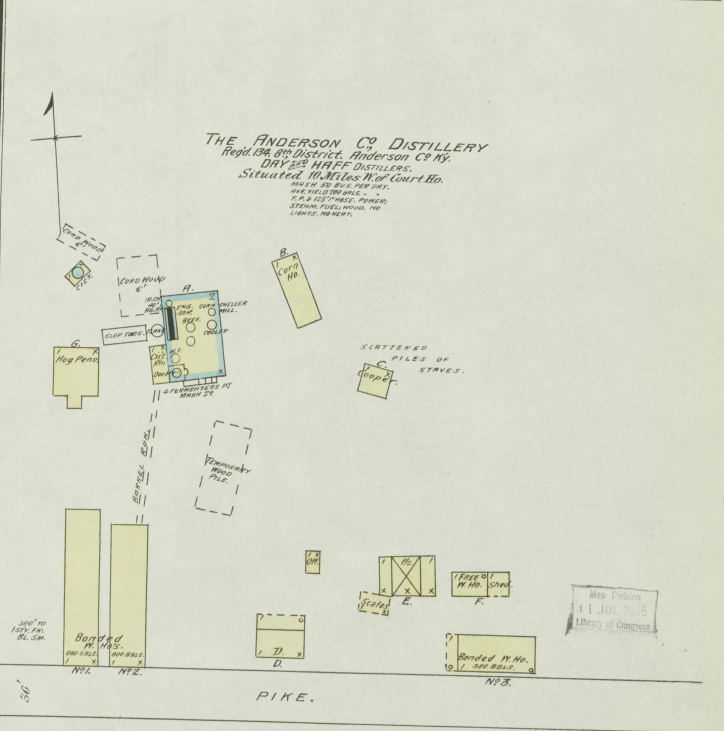
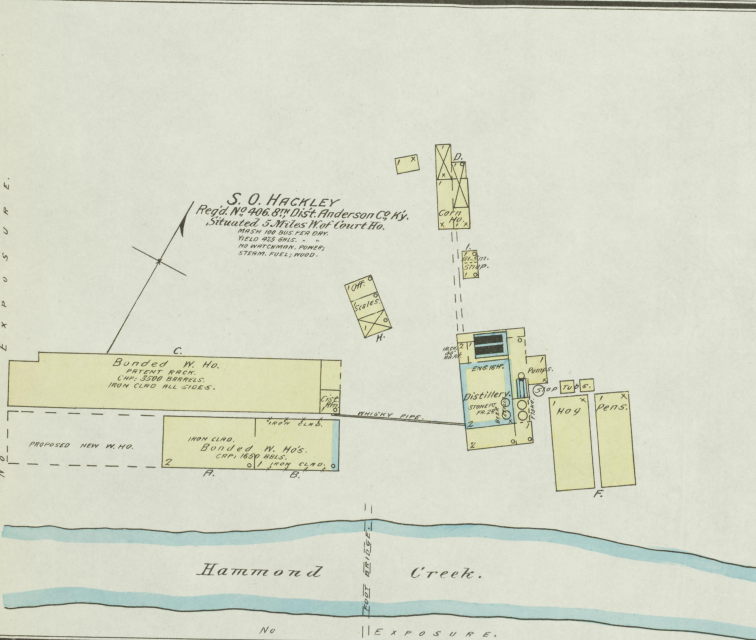
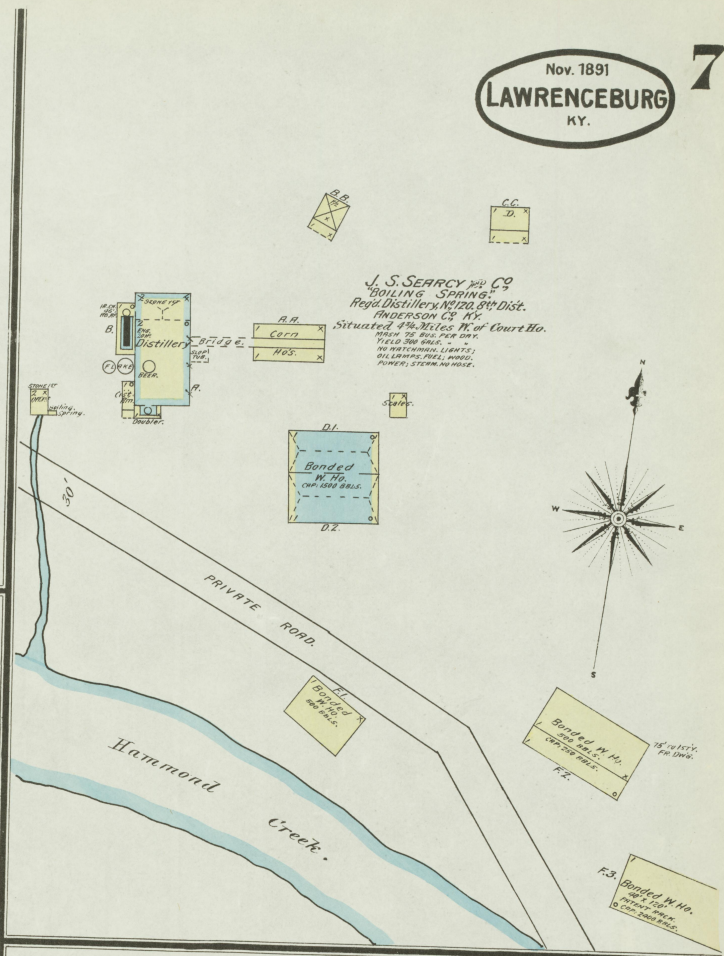
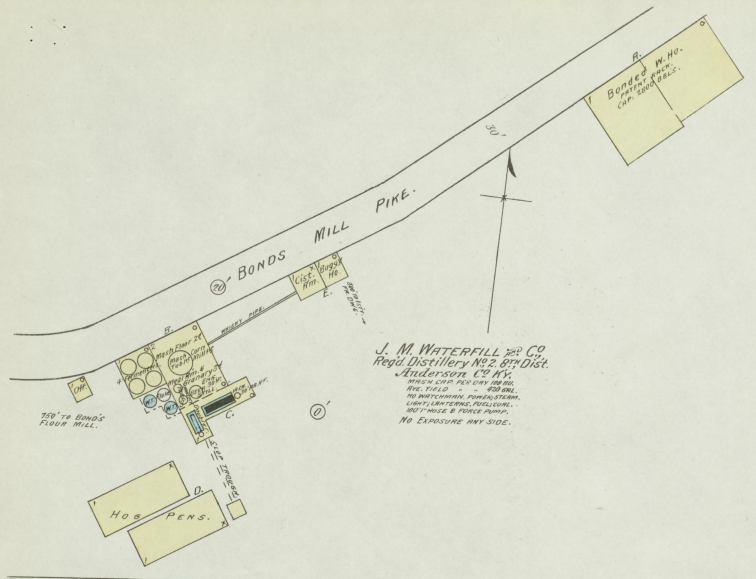
**W. B. SAFFELL**  
 Reg. Distillery No. 133, 8<sup>th</sup> Dist.  
 Anderson Co. Ky.  
 HAND CAP. PER DAY 1000 BUSH.  
 REEN CAP. 1500 GALS.  
 TIELS FOR 1000 GALS.  
 WATCHMAN LIGHTS, LAMP,  
 RIGS, SONG, PUMPS, STEAM,  
 NO HEATING.



Map No. 115  
 Library of Congress

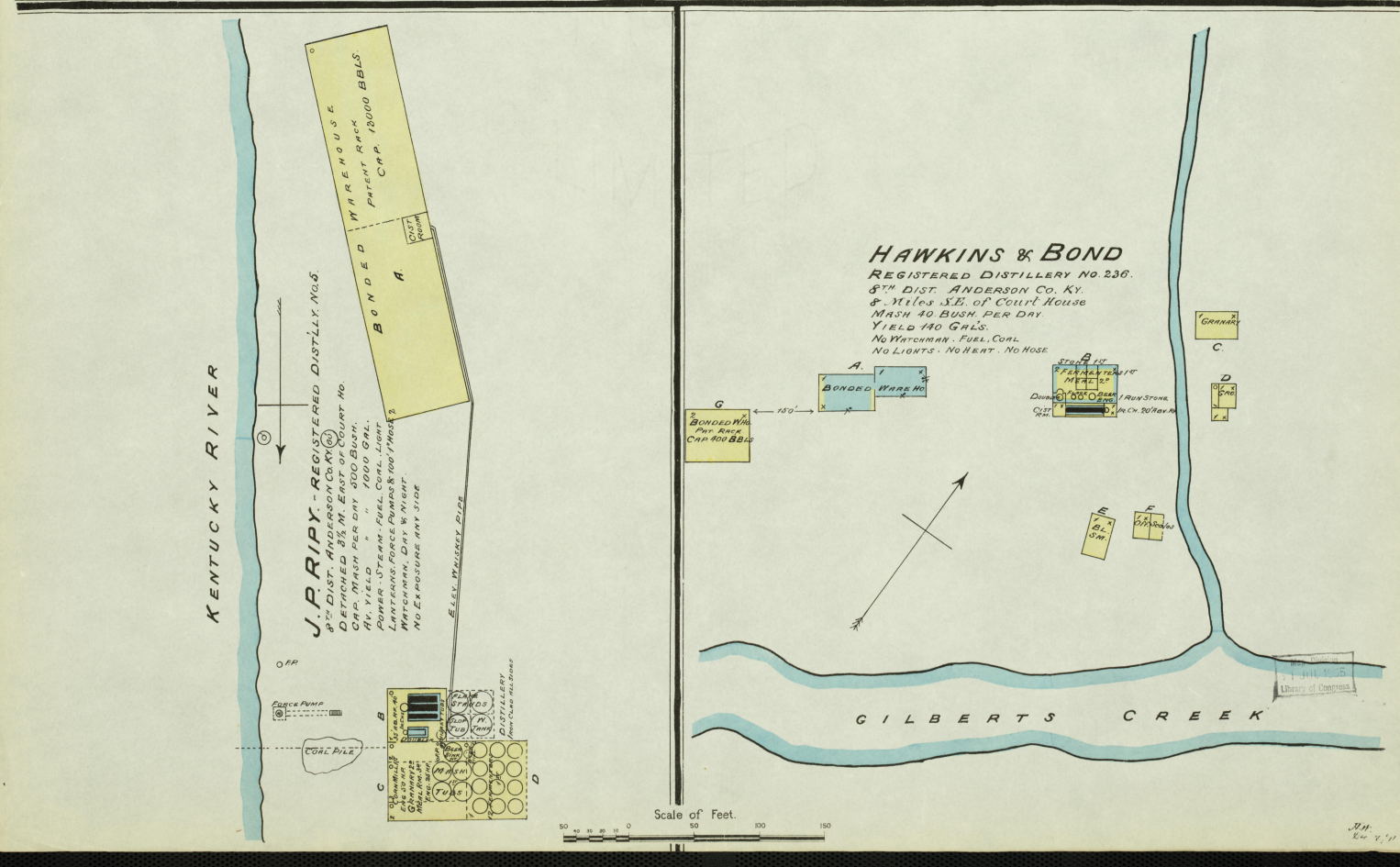
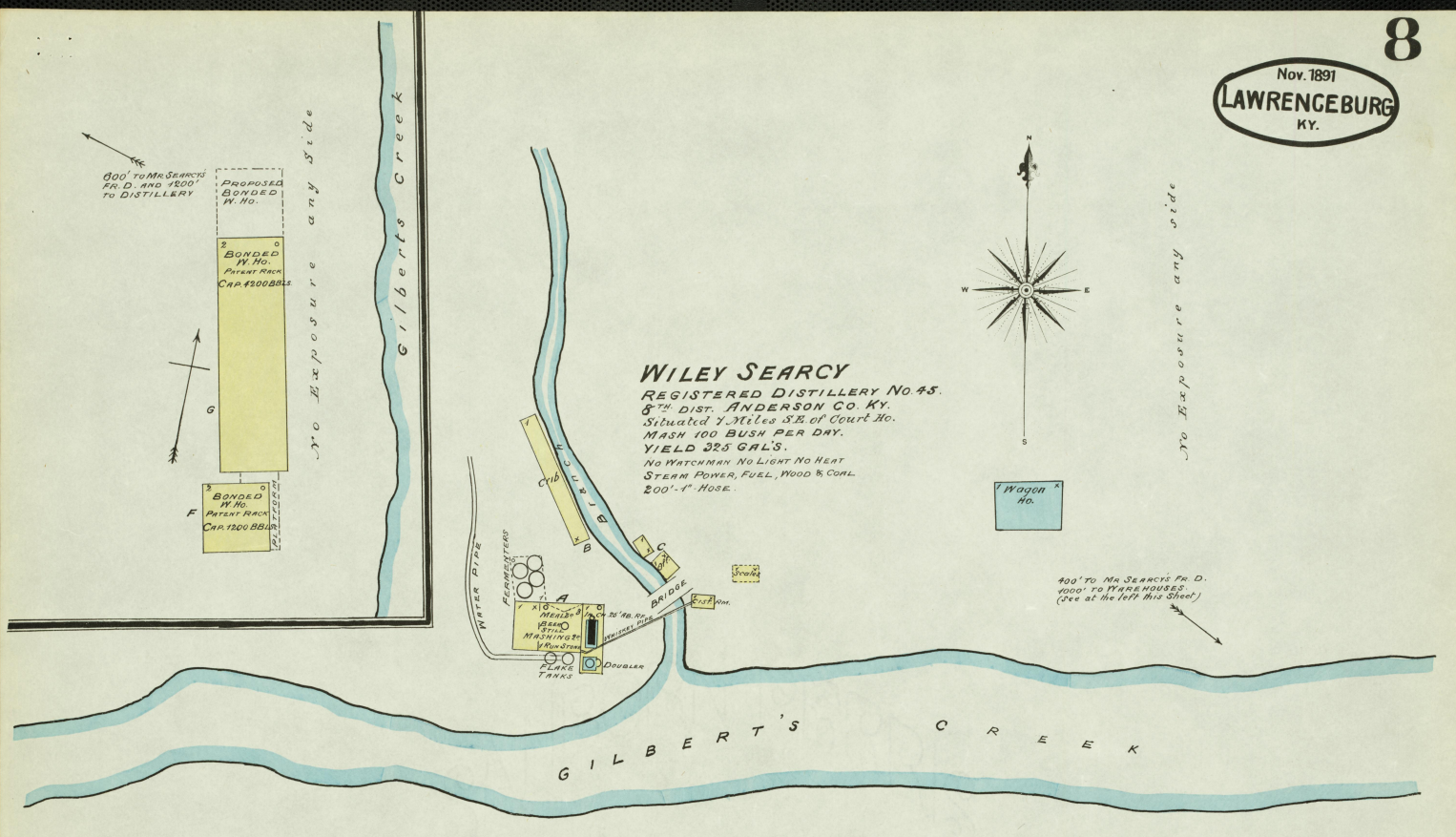




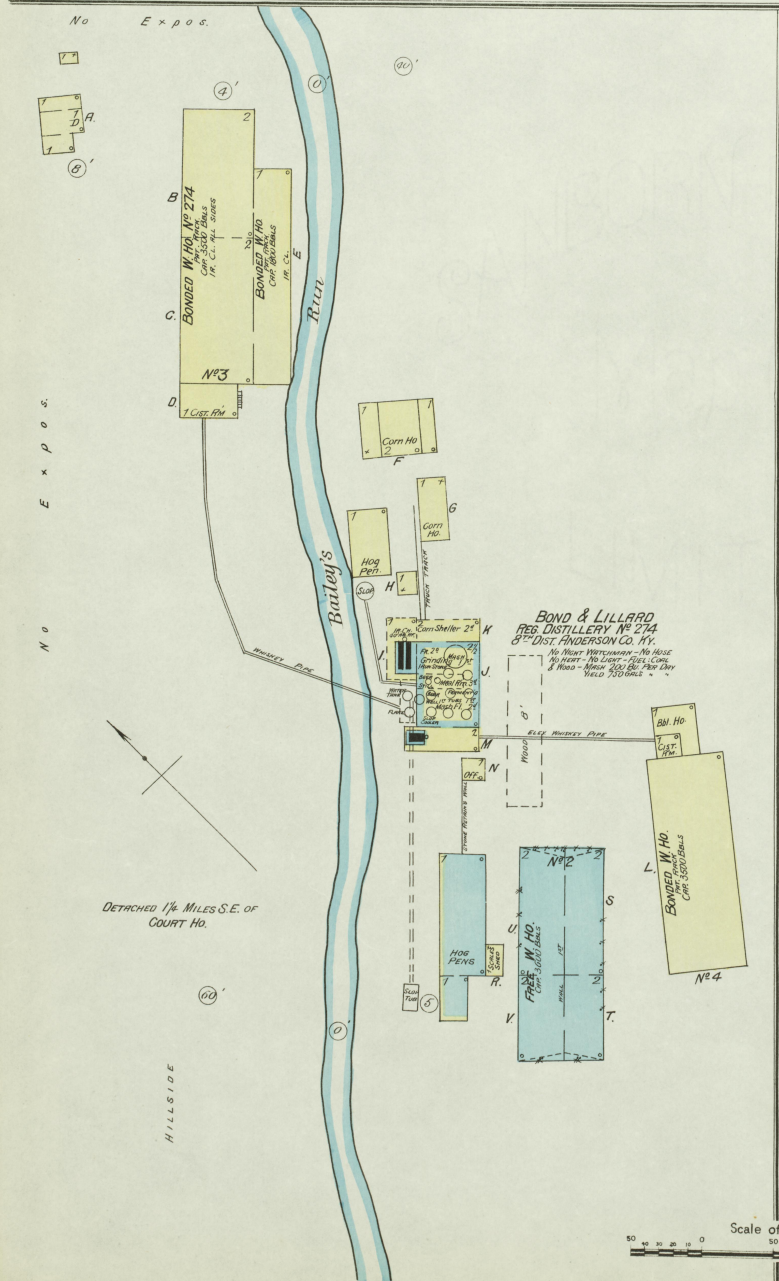
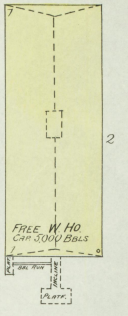
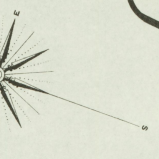
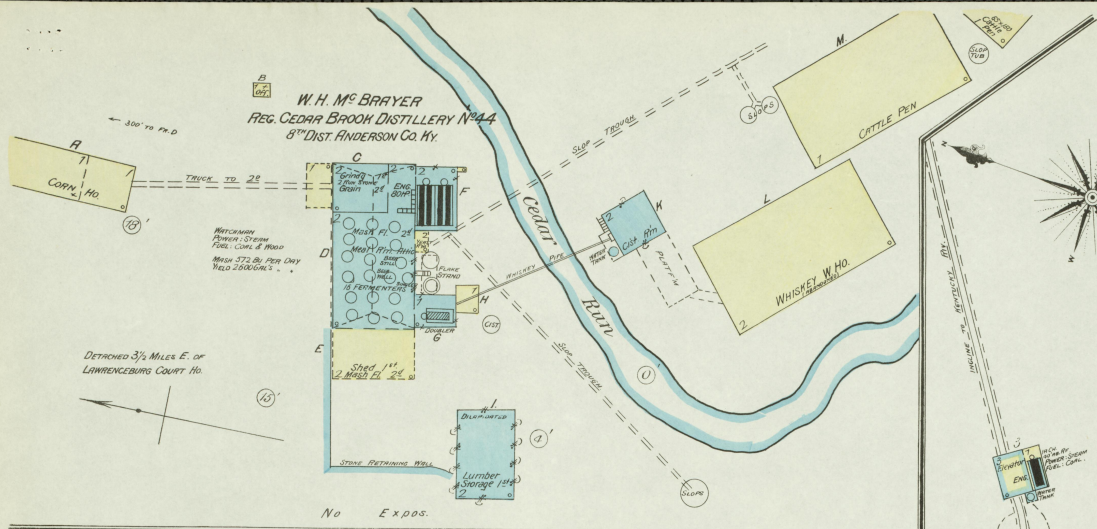




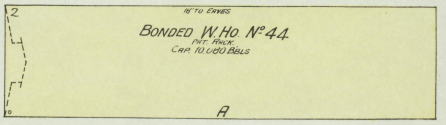
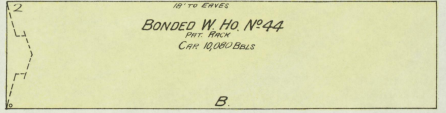
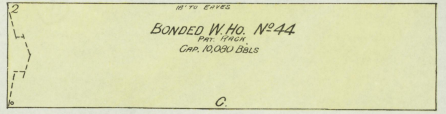
Nov. 1891  
**LAWRENCEBURG**  
KY.



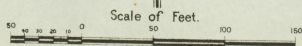




W. H. McBRAYER  
ELEVATOR & WHISKEY W. HO'S.  
NEXT WATKINSON & STONE RECEIVERS.



DETACHED 2 1/2 MILES E. OF COURT HO 3 1/2 MILE N.E. OF  
DISTILLERY NO. 44, 5TH DISTRICT, ANDERSON CO. KY.



Map Edition  
1 JUL 1915  
Library of Congress