

# INSURANCE MAPS OF PADUCAH KENTUCKY

**SANBORN-CO.  
MAP CO. LIMITED  
TERRIS**  
115 BROADWAY, NEW YORK

OCTOBER 1897 SCALE 50 FT. TO AN INCH.

Copyright 1897 by the Sanborn-Terris Map Co. Limited.

NOV 29 1897  
TWO COPIES RECEIVED  
DEC 8 1897

658222-2

## INDEX.

<p><b>STREETS.</b></p> <p><b>A</b> Adams, 100-235 17 " " 300-226 *11 " " 301-227 *12 " " 600-228 *5 " " 601-831 *6  <b>B</b> Broad, 1500-1606 22 Broadway, 100-231 19 " " 300-237 13 " " 600-271 7 " " 900-1117 3 " " 1118-1201 2 " " 1302-1416 *27 Burnett, 6th to 9th St. 20 &amp; 27  <b>C</b> Campbell, 500-735 21 Clark, 100-233 18 " " 300-331 12 " " 600-835 6 Clay, 300-233 15 " " 600-832 9 Clements Ave., 100-155 25 Court, 100-230 *18 " " 101-231 *19 " " 300-233 13 " " 600-235 7 " " 900-1117 3 " " 1118-1201 2 " " 1301-1415 *27  <b>E</b> Eighth, N., 200-417 8 " " 418-631 9 " " 1003-1209 20 " " S., 217-440 6 " " 500-713 5 Eleventh, N., 100-135 3 Elizabeth, 1301-1415 *27  <b>F</b> Farley's Place, 25 Fifth, N., 100-135 13 " " 200-415 14 " " 416-635 15 " " S., 701-842 *21 " " 100-218 13 " " 219-439 12 " " 711-930 10 " " S., 900-135 19 " " 100-135 19 " " S., 100-233 18 " " 416-635 15 " " S., 100-219 13 " " 220-437 12</p>	<p><b>Fourth, S.,</b> 500-718 11 " " 707-931 *16 " " 720-932 *16 " " 1000-1225 23 " " near Broad St. 22  <b>G</b> George, near Third 22  <b>H</b> Harris, 600-727 21 " " 100-231 20 " " 300-337 15 " " 600-835 9 " " 900-1034 *4  <b>J</b> Jackson, 100-233 17 " " 300-236 11 " " 600-829 5 " " 100-233 19 " " 300-436 *13 " " 301-533 *14 " " 600-830 *7 " " 601-832 *8 " " 600-1108 *3 " " 901-1037 *4 " " 1110-1248 *2 " " 100-631 10  <b>M</b> Madison, 100-227 20 " " 300-335 14 " " 600-832 8 " " 900-1033 8 Meyers, 24, 25, 27 &amp; 28 Mill, 200-415 14 " " 300-416 *8 " " 201-431 *4 " " 418-632 *9 " " 1006-1210 *20 " " S., 100-218 *7 " " 219-439 12 " " 711-930 10 " " S., 900-135 19 " " 100-135 19 " " S., 100-233 18 " " 416-635 15 " " S., 100-219 13 " " 220-437 12</p>	<p><b>Rose,</b> 25  <b>Second, N.,</b> 100-233 19 " " S., 200-433 18 " " 434-719 17 " " 720-735 16 " " 100-135 7 " " 200-417 8 " " 418-633 9 " " 700-815 20 " " 1003-1112 20 " " S., 100-216 7 " " 217-439 6 " " 500-717 5 " " 718-926 *10 " " 100-136 12 " " 101-135 *7 " " 300-416 *14 " " 301-415 *8 " " 417-631 *9 " " 418-632 *15 " " 700-731 21 " " near Barnett 27 " " S., 100-218 *13 " " 101-215 *7 " " 217-441 6 " " 220-440 *12 " " 500-708 *11 " " 901-713 *5 " " 710-935 10  <b>Tennessee,</b> 100-355 16 " " Clark, W. &amp; Sons, Stenmery, 100-431 10 " " Clements Bros. Saw &amp; Planing Mill, 100-135 3 " " S., 300-431 4 " " 100-215 3 " " 1430-1447 28 " " 100-230 *19 " " 101-135 13 " " 201-415 *14 " " 300-230 *20 " " 100-134 *19 " " 301-219 *13 " " 300-426 *18 " " 221-441 *12 " " 425-718 *17 " " 501-715 *11 " " 717-930 16 " " 1006-1227 *25 " " 1300-1435 *22 " " Farmers Tobacco Warehouse, 3 " " First Christian Church, 3 " " 301-335 *21 " " 301-215 *2 " " 600-832 *9 " " 100-135 2 " " 100-215 2 " " S., 201-215 2</p>	<p><b>Washington,</b> 100-235 18 " " 300-535 12 " " 600-831 6 " " 100-155 25  <b>Woodward,</b> 100-155 25  <b>SPECIALS.</b> <b>A</b> Allison &amp; Veal Tobacco Warehouse, 14 Anheuser-Busch Beer Depot, 4  <b>B</b> Baptist Church, N. Fifth St., 13 Barry &amp; Hensberger Warehouse, 4 " " Hubbard Tobacco Warehouse, 2 " " S., Pottery, 2 Baumer Bros. Dairy, 28 Bergdon, F. A., Bottling Works, 4 Boyd-White Infirmary, 13 Broadway M. E. Church, South, 7 " " Tobacco Warehouse, 3 Bank's Chapel M. E. Church, 3 Barnett &amp; Son Tobacco Warehouse, 11  <b>C</b> Cairo Short Line R. R. Freight Depot, 21 Carney House, 3 Catholic Church, Broadway, 13 " " School, 13 Chambliss &amp; Murray, Brick Yard, 28 City Hall, 15 Clark, W. &amp; Sons, Stenmery, 10 Clements Bros. Saw &amp; Planing Mill, 28 Colanakis Mfg. Co., 24 " " M. E. Church, 11 Commercial Hotel, 13 Cook, F. W., Brewing Co.'s Depot, 3 County Court House &amp; Jail, 3  <b>D</b> Dixie Shirt Works, 7 Hoop Co., 18  <b>E</b> Eades &amp; Lehnhard, Coal Shed, 13 Electric Steam Laundry, 18 Enterprise Tobacco Warehouse, 18  <b>F</b> Farley, E., Stave Factory, 23 Farmer, Graham &amp; Co., Tobacco Warehouse, 3 Farmers Tobacco Warehouse, 3 First Christian Church, 3 " " Cumberland Presby. Church, 2 " " Presbyterian Church, 8 " " St. Colored Baptist Church, 2 " " Porky Deer Tobacco Works, 20</p>	<p><b>G</b> Gardner, J. &amp; Sons, Wood Works, 19 German Evang. Church, 12 " " Lutheran Church, 12 Gilbert &amp; Weldon, Tobacco Warehouse, 3 Grace Episcopal Church, 7 Greif &amp; Christy, Wagon Shop, 13  <b>H</b> Hall, C. R., Tobacco Warehouse, 14 Hart Building, 13 Henderson Brewing Co.'s Depot, 4 High School, New, 2 Hotel Gilbert, 19  <b>I</b> Ill. Centr. R. R. Freight Depot, 2 " " " Shops, 26  <b>J</b> Jackson Foundry &amp; Machine Co., 19 Jefferson School, " Machine Co., 13 Johnson Foundry &amp; Machine Co., 19  <b>K</b> Katterjohn, F. W. &amp; Sons, Brick Yard, 28 Kilgore, J. L. &amp; Co., Heading Mill, 27  <b>L</b> Langstaff-Orm Mfg. Co., 16, 17 &amp; 18 Lee School, 11 Lehnhard, H. J., Boiler Shop, 16 Lewis, D. L., Agric. Impl. Warehouse, 19 Lincoln School, Colored, 19 Little, J. W., Spoke Factory, 28 Longfellow School, 13 Love, W. L. &amp; Co., Machine Shop, 18  <b>M</b> McCutchen, V. A., Tobacco Works, 9 McKinzie Yeaser &amp; Packing Co., 25 &amp; 28 Market House, 19 Michael, M. &amp; Bros., Horse Collar Fact., 18 Miller, S. E., Tobacco Warehouse, 6 Missionary Baptist Church, Colored, 6 Morton's Opera House, 13 Municipal Plant, City of Paducah, 4  <b>N</b> New City Steam Laundry, 19 " " Steam Dairy of Paducah, 28 News Printing, 13 Western District Warehouse Co., 19 Williamson, J. E. &amp; Co., Marble Works, 13 Winlow Chapel, 12  <b>O</b> Owen Bros., Storage, 13  <b>P</b> Paducah Electric Co., 19 " " Furniture Mfg. Co., 16 " " Gas Light Co., 20 " " Iron Company, 19 &amp; 23 " " Marine Ways Co., 18 " " Mill &amp; Elevator Co., 18 " " Peanut Co., 19 " " Pottery, 9 " " Steam Bottling Works, 19 " " Dye Works, 12 " " Street Fy's Plant, 27 " " P. T. &amp; A. R. R. Depot &amp; Bldg., 10 " " Tobacco Warehouse, 2 " " Yeaser &amp; Lumber Co., 24 " " Vinegar Co., 18 " " Water Supply Co., 18 Palmer, Thos., 13 Purchase Wheel Stock Co., 23  <b>R</b> Register Printing, 13 Rehkopf, E. &amp; Sons, Horse Collar Fact., 13 " " " Saddlery Mfg., 19 " " " Tannery, 27 Rieske Crystal Ice Mfg., 22 &amp; 23 Richtberger, F. &amp; Sons, Saw &amp; Pl. Mill, 22  <b>S</b> St. Nicholas Hotel, 18 Scott Hardware Co.'s Warehouse, 14 Seaman, T. C., Stave &amp; Heading Fact., 24 Second Baptist Church, 5 " " Christian Church, 21 " " Presbyterian Church, 11 Shelton Bros., Machine Shop, 22 Smith &amp; Scott, Tobacco Works, 29 Standard Oil Co., 4 Star Steam Laundry, 13 Sun Printing, 13 Synagogue, 7  <b>U</b> Union Depot, 21 U. S. Post Office, 13  <b>V</b> Victoria Mills, 27  <b>W</b> Wallace &amp; Gregory Bros., Vinegar Fact., 3 " " Eiect. &amp; Mach. Co., 17 Watson Hotel, 3 Wells, B. &amp; Son, Clothing, 13 Western District Warehouse Co., 19 Williamson, J. E. &amp; Co., Marble Works, 13 Winlow Chapel, 12  <b>Y</b> Y. M. C. A. Building, 13 Young Mfg. &amp; Storage Warehouse Co., 21</p>
---	---	--	---	--

\* Indicates only one side of Street shown.

Oct. 1897  
PADUCAH  
KY.

ILLINOIS

Ohio

River

River

Owen's Island

Tennessee

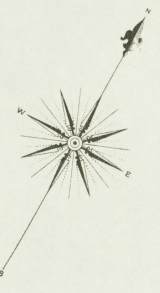
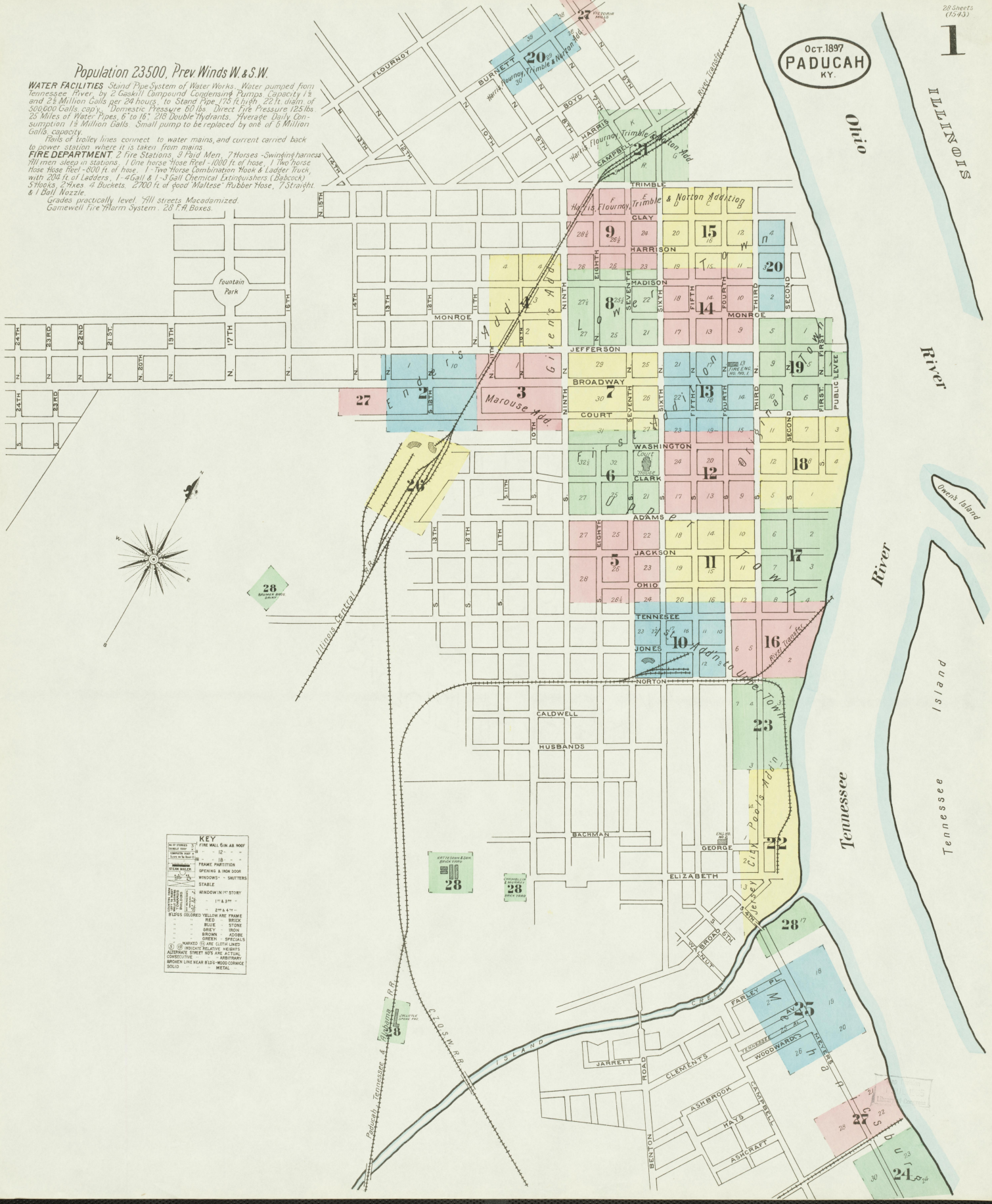
Tennessee

Population 23500, Prev Winds W. & S.W.

**WATER FACILITIES** Stand Pipe System of Water Works. Water pumped from Tennessee River, by 2 Gaswell Compound Condensing Pumps Capacity 1 1/2 and 2 1/2 Million Gals per 24 hours. to Stand Pipe 125 ft high, 22 1/2 in dia of 500,000 Gals. cap., Domestic Pressure 60 lbs. Direct Fire Pressure 125 lbs 25 Miles of Water Pipes, 6" to 16", 218 Double Hydrants, Average Daily Consumption 1 1/2 Million Gals. Small pump to be replaced by one of 6 Million Gals. capacity.

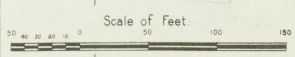
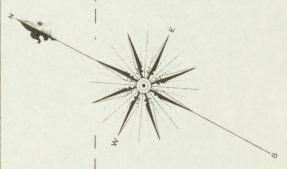
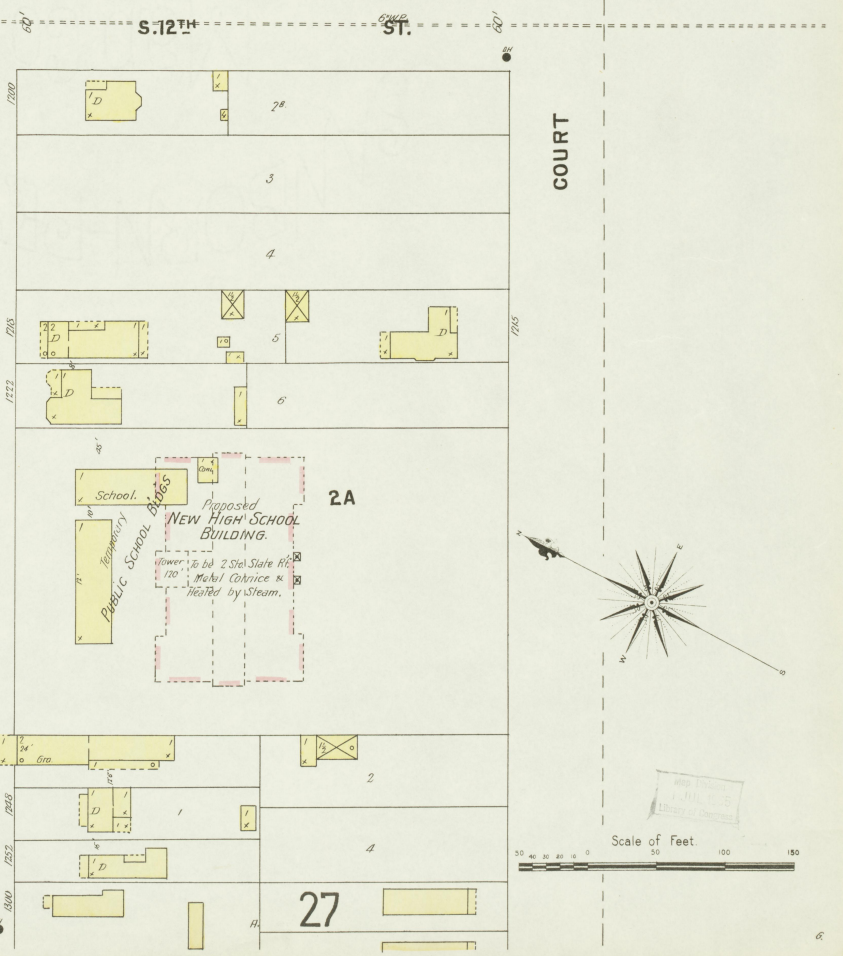
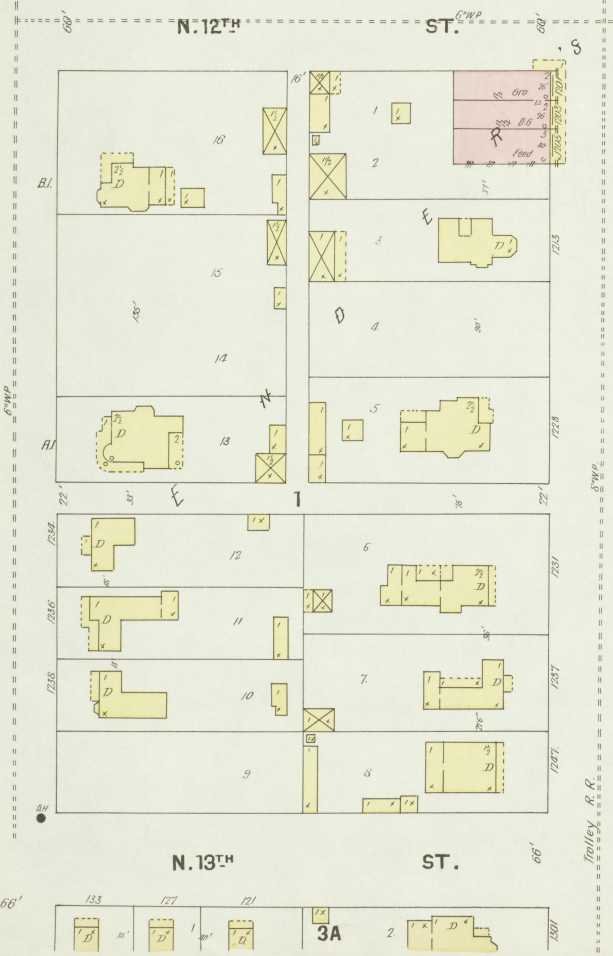
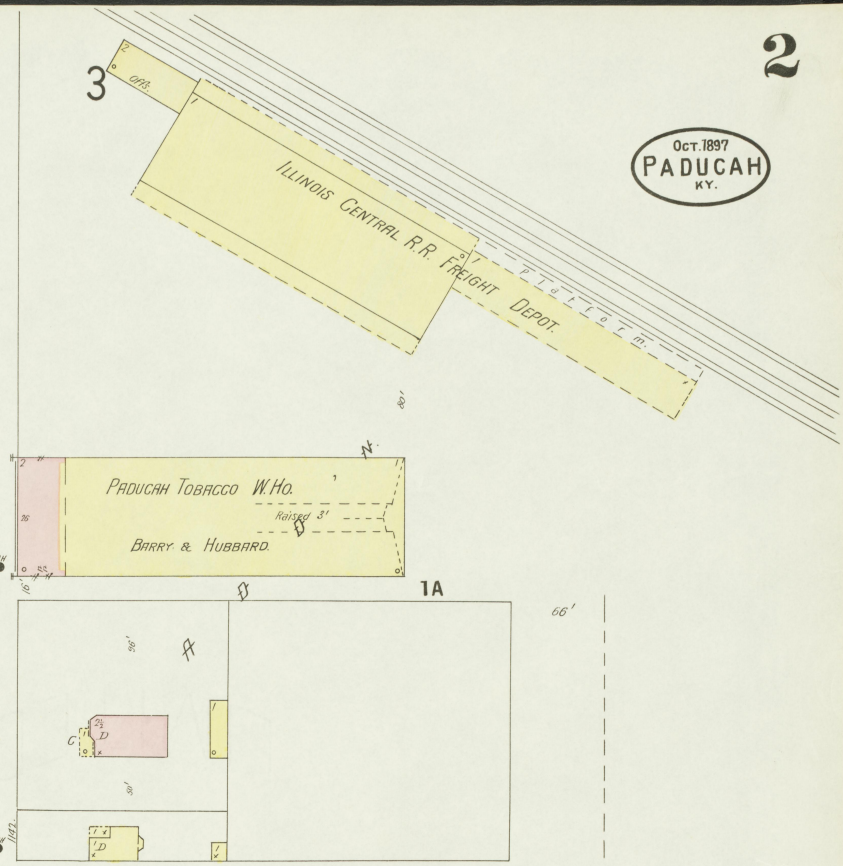
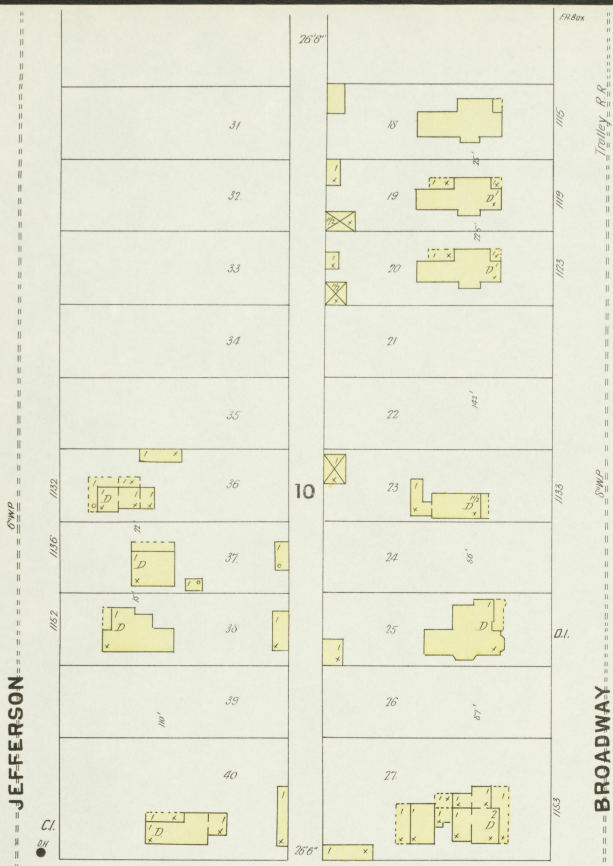
**FIRE DEPARTMENT** 2 Fire Stations, 3 Paid Men, 7 Horses - Swinging harness. All men sleep in stations. 1 One horse Hose reel - 1000 ft of hose, 1 Two horse Hose reel - 800 ft of hose. 1 Two horse Combination Hook & Ladder Truck, with 204 ft of Ladders, 1-4 Gall & 1-3 Gall Chemical Extinguishers (Babcock), 5 Hooks, 2 Hoes & Buckets, 2700 ft of good "White" Rubber Hose, 7 Straight & 1 Bell Nozzle.

Grades practically level. All streets Macadamized. Gamewell Fire Alarm System. 28 F.R. Boxes.



KEY	
[Symbol]	FIRE WALL IN AB ROOF
[Symbol]	IRON ROOF
[Symbol]	WOOD ROOF
[Symbol]	FRAME PARTITION
[Symbol]	OPENING IN IRON DOOR
[Symbol]	WINDOWS - SHUTTERS
[Symbol]	STAIRS
[Symbol]	WINDOW IN 1 <sup>ST</sup> STORY
[Symbol]	2 <sup>ND</sup> & 4 <sup>TH</sup>
[Symbol]	BRICK
[Symbol]	STONE
[Symbol]	IRON
[Symbol]	ADOBES
[Symbol]	SPECIALS
[Symbol]	HEIGHT RELATIVE HEIGHTS
[Symbol]	ALTERNATE STREET NOS. ARE ACTUAL
[Symbol]	CONSECUTIVE
[Symbol]	ALTERNATE
[Symbol]	BROKEN LINE NEAR BLDG - WOOD CORNICE
[Symbol]	SOLID - METAL

OCT. 1897  
**PADUCAH**  
KY.



JEFFERSON

BROADWAY

N. 12<sup>TH</sup> ST.

S. 12<sup>TH</sup> ST.

COURT

N. 13<sup>TH</sup> ST.

27

3A

2A

1A

10

3

66'

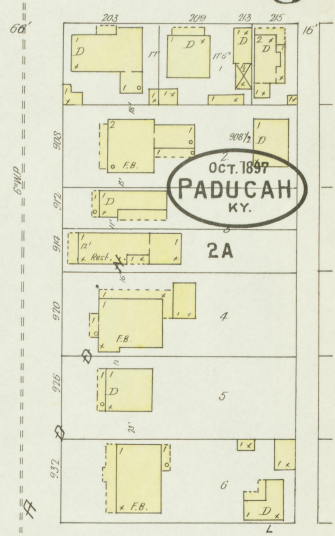
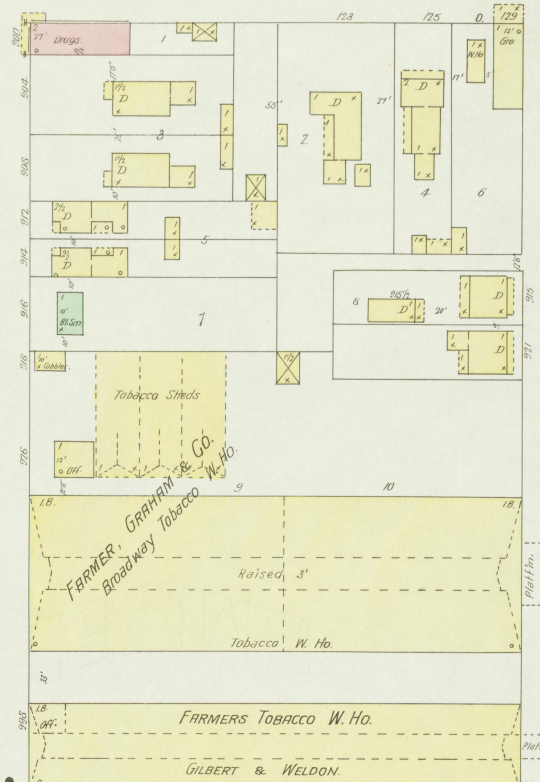
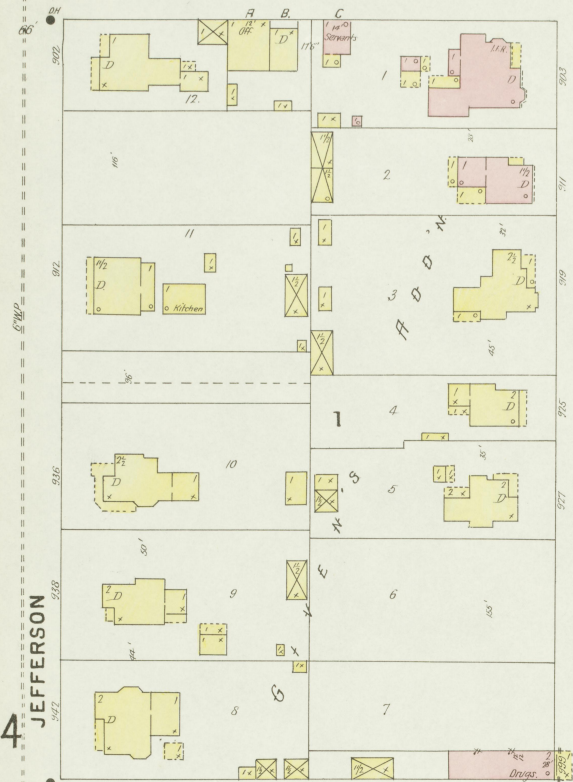
66'

Scale of Feet

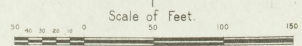
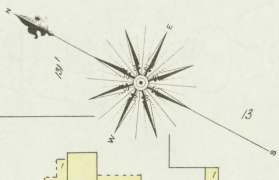
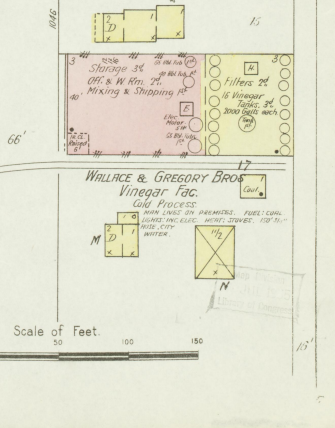
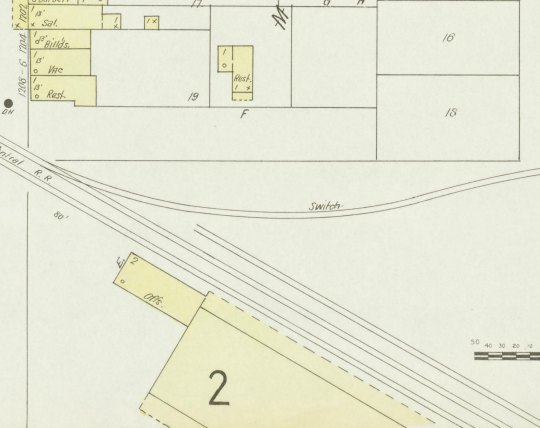
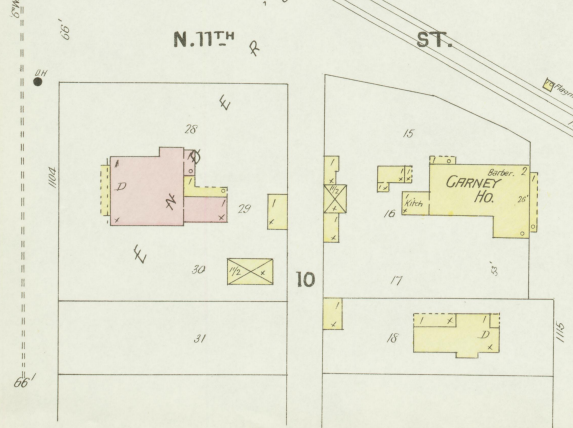
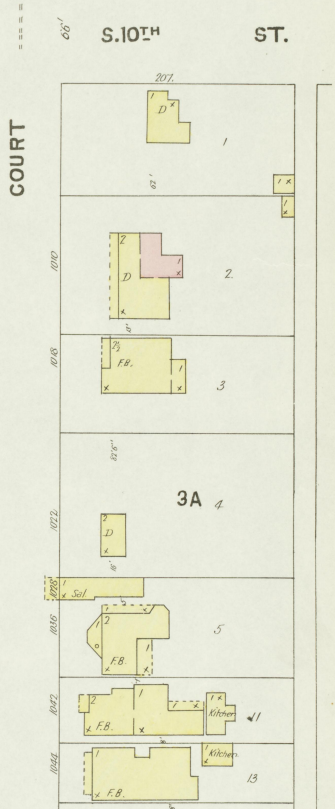
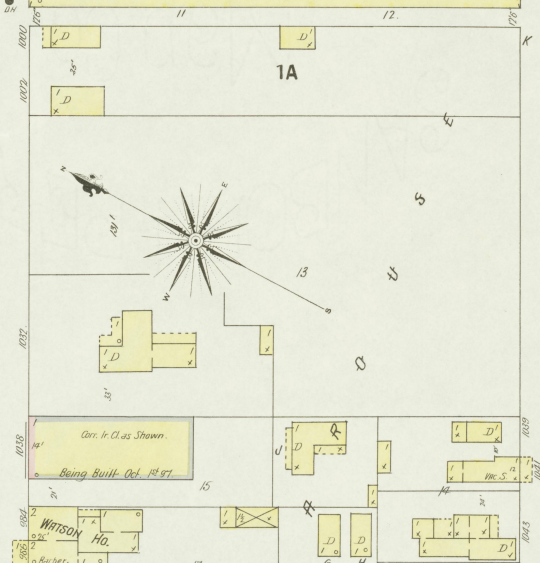
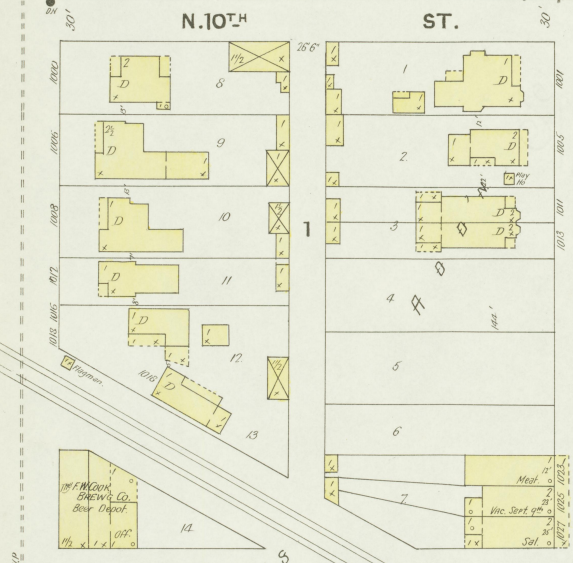
N. 9<sup>TH</sup> ST.

7 S. 9<sup>TH</sup> ST.

3



OCT. 1897  
PADUCAH  
KY.



JEFFERSON

BROADWAY

COURT

4

7

3

N. 10<sup>TH</sup> ST.

S. 10<sup>TH</sup> ST.

N. 11<sup>TH</sup> ST.

S. 11<sup>TH</sup> ST.

JEFFERSON

BROADWAY

COURT

4

7

3

N. 12<sup>TH</sup> ST.

S. 12<sup>TH</sup> ST.

JEFFERSON

BROADWAY

COURT

4

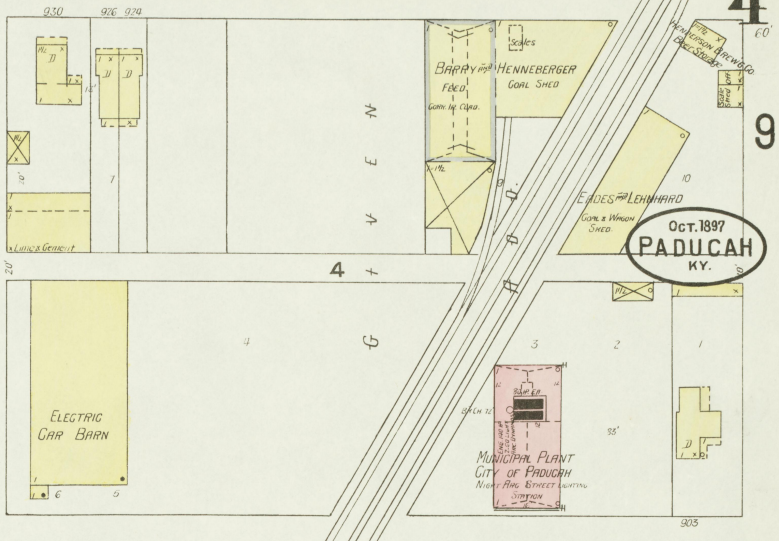
7

3

HARRISON

4  
9

Oct. 1897  
PADUCAH  
KY.



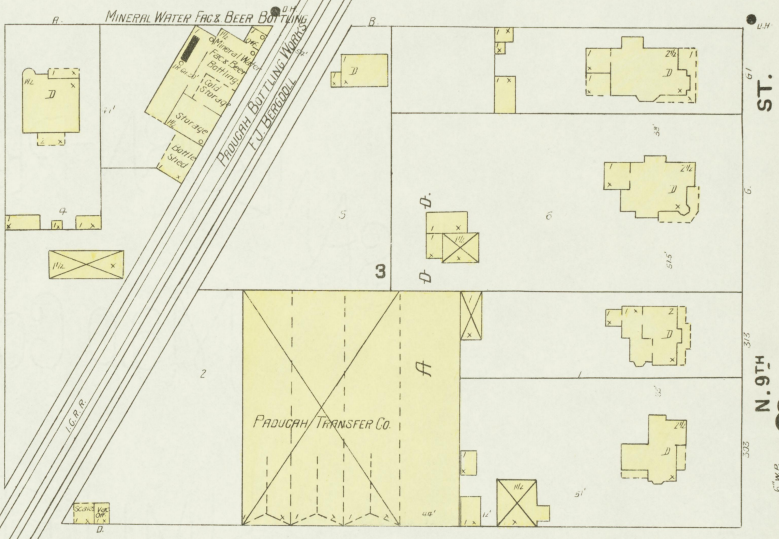
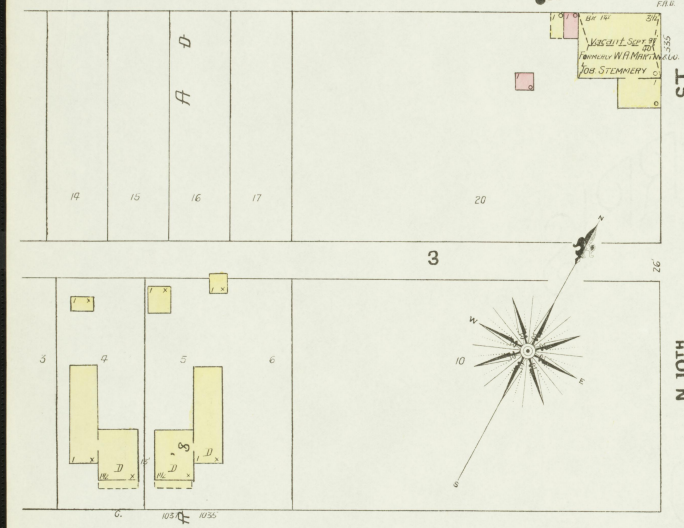
ELECTRIC CAR BARN

MUNICIPAL PLANT  
CITY OF PADUCAH  
NORTH SIDE STREET LIGHTING  
STATION

TROLLEY R.R.

MADISON

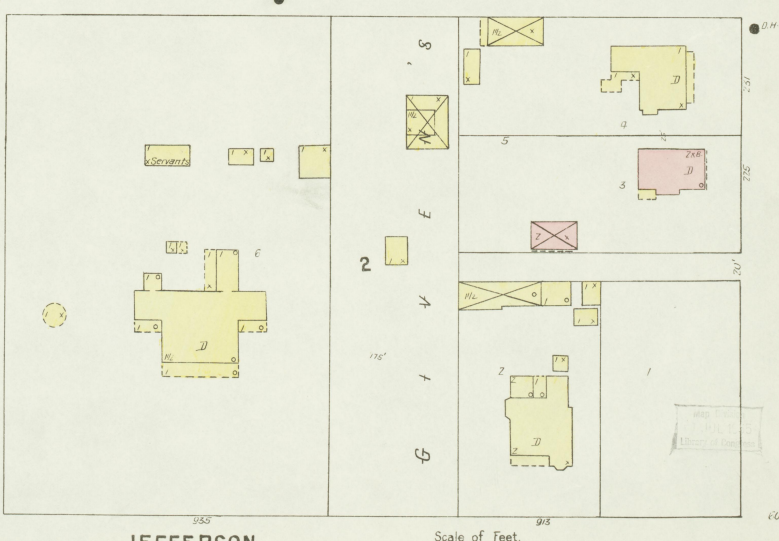
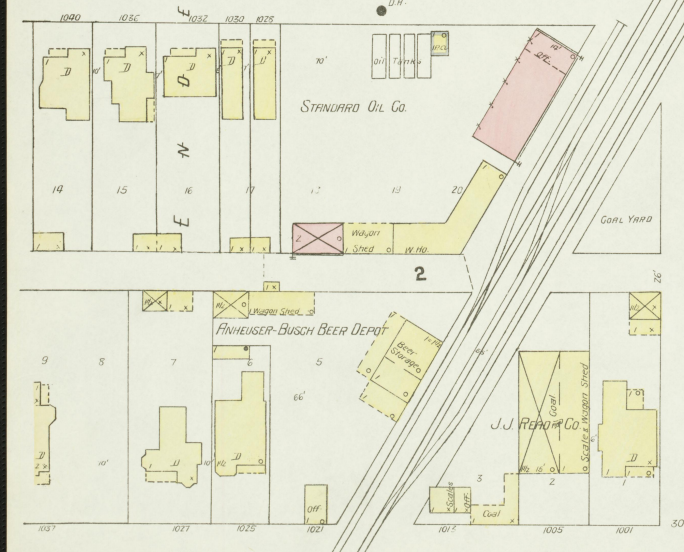
TROLLEY R.R.



N. 10<sup>TH</sup> ST.

N. 9<sup>TH</sup> ST.

MONROE



J.J. REARD Co.

JEFFERSON

Scale of Feet.

3

D.H.

Trolley R.R.

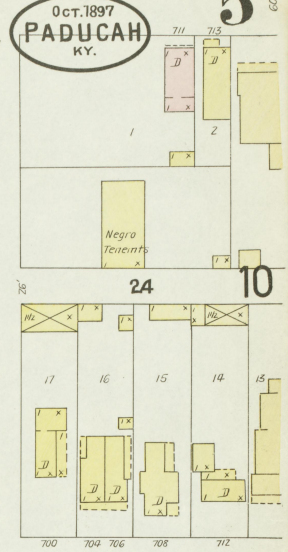
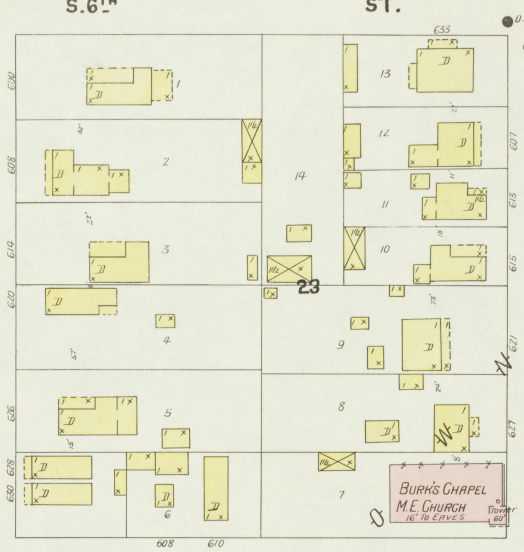
11  
S. 6<sup>TH</sup>

ST.

Trolley R.R.

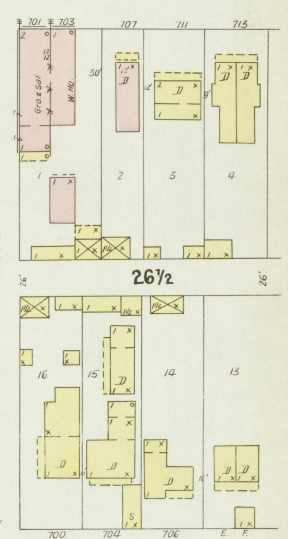
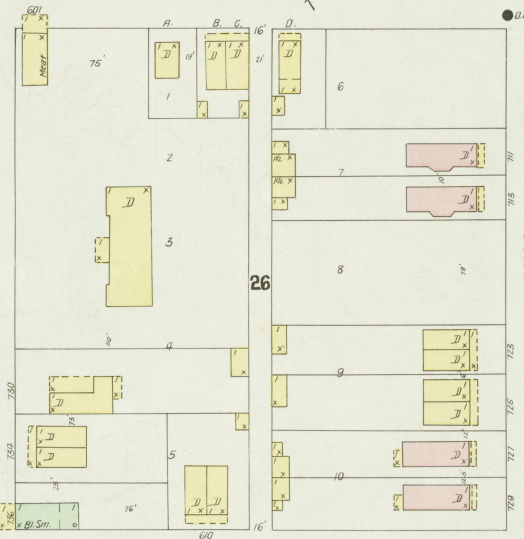
5

Oct. 1897  
PADUCAH  
KY.



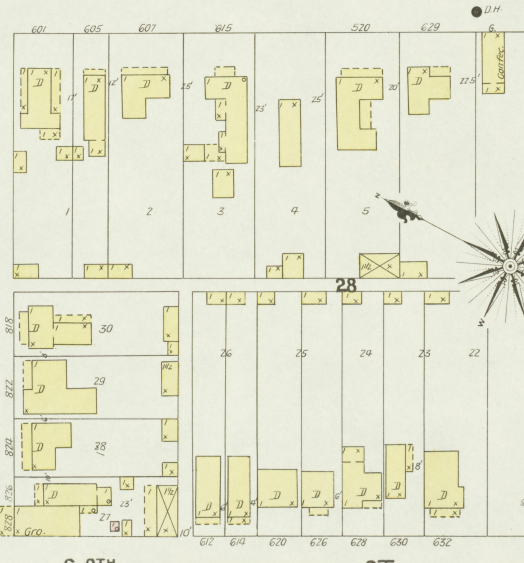
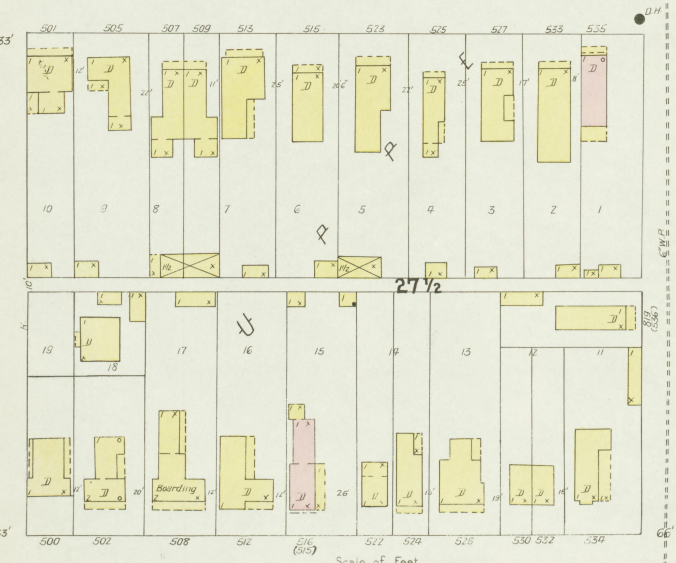
S. 7<sup>TH</sup>

ST.



S. 8<sup>TH</sup>

ST.

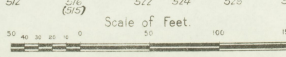


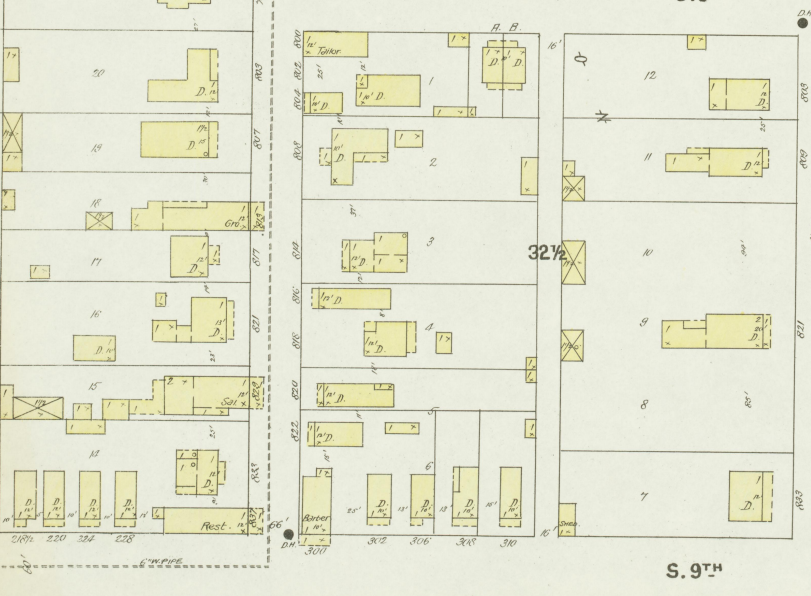
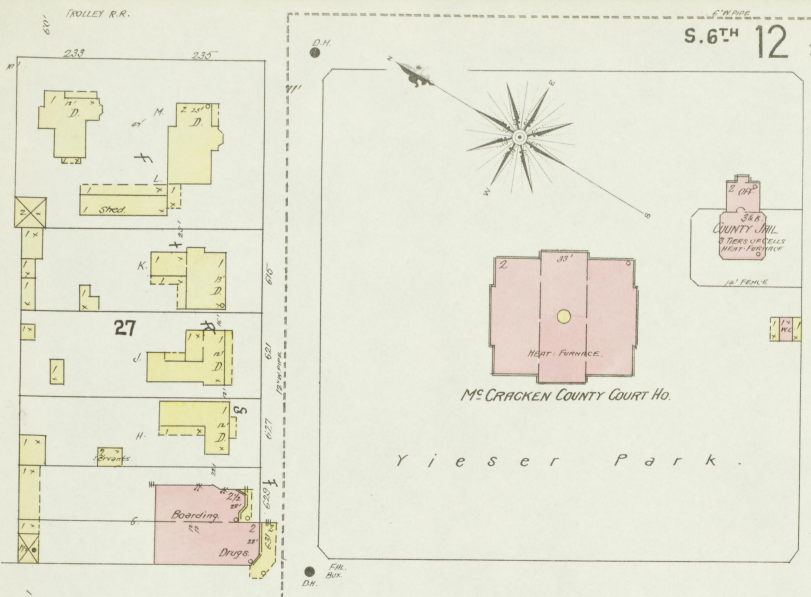
S. 9<sup>TH</sup>

ST.

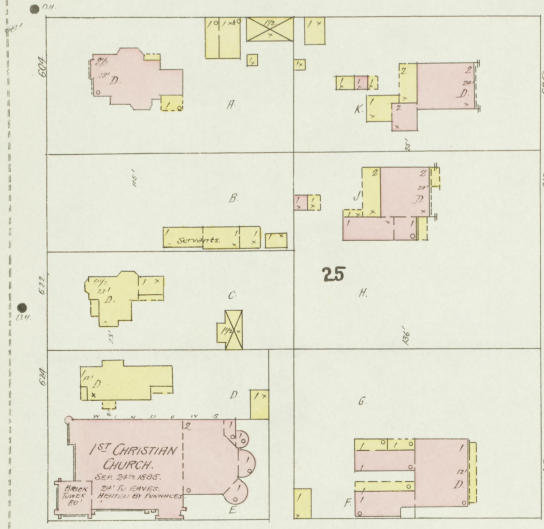
Trolley R.R.

60'

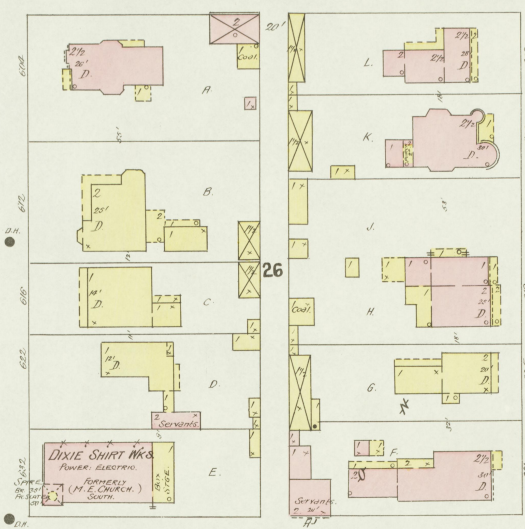




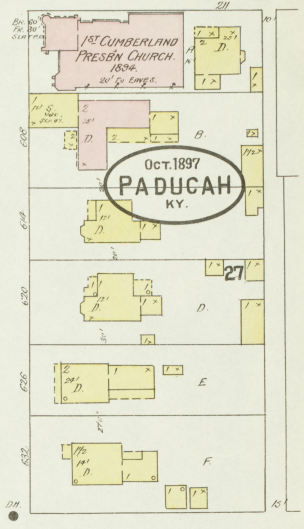
TOLLEY R.A.  
N. 6<sup>TH</sup> ST.



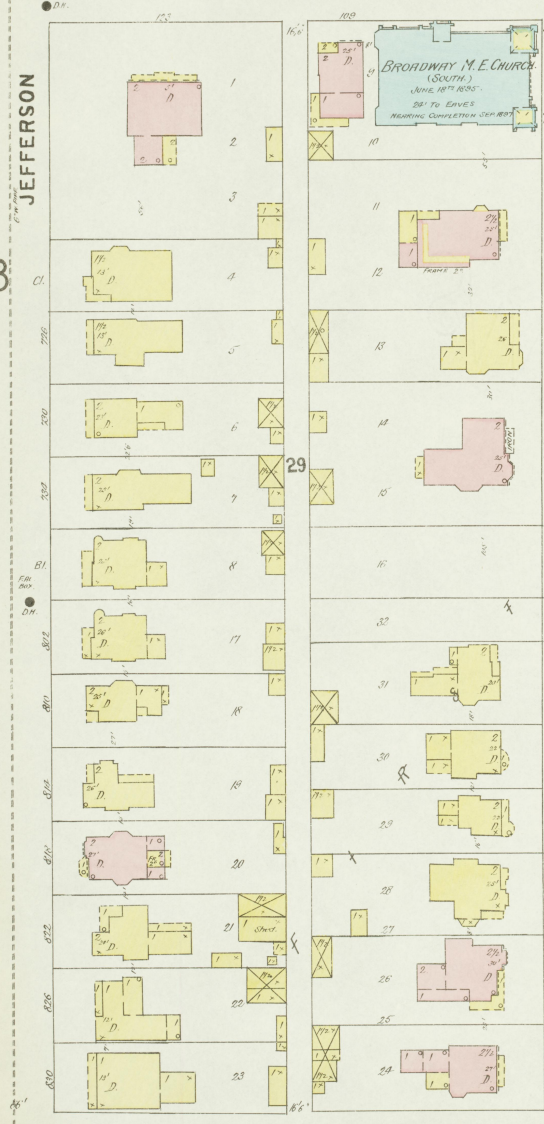
13 S. 6<sup>TH</sup> ST.



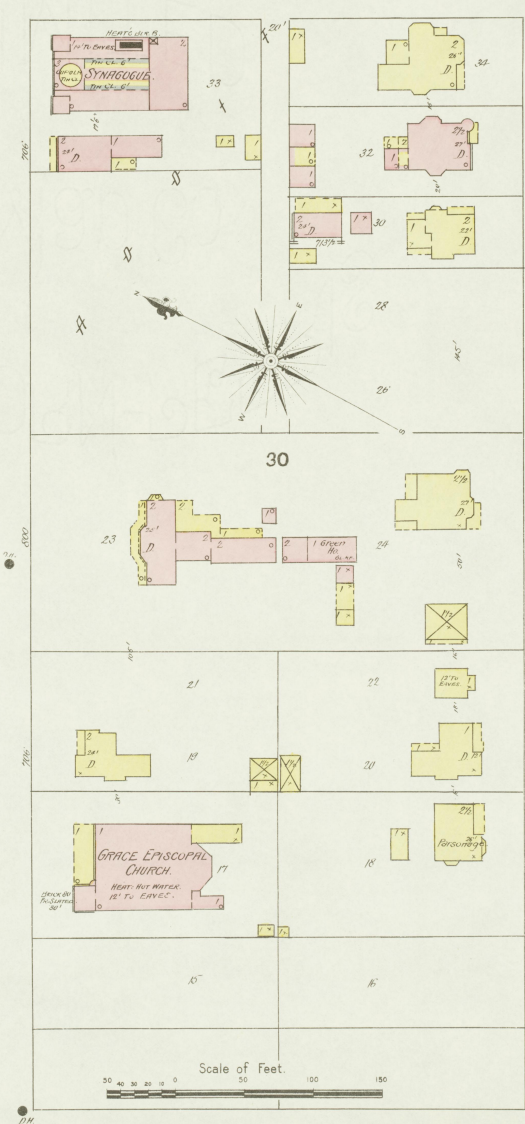
7



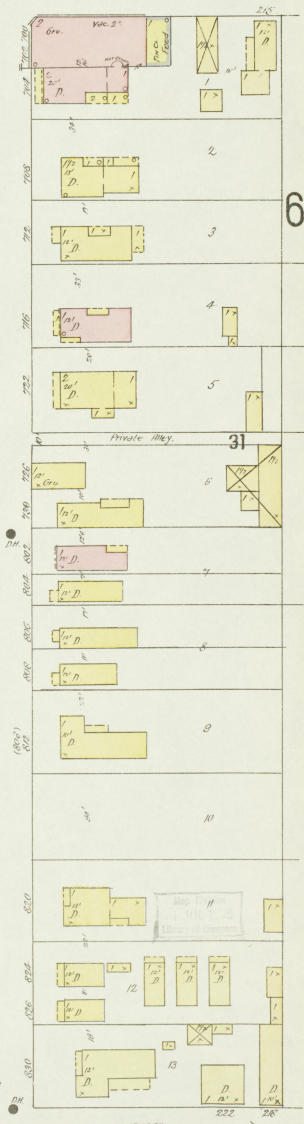
N. 7<sup>TH</sup> ST.



S. 7<sup>TH</sup> ST.



S. 7<sup>TH</sup> ST.



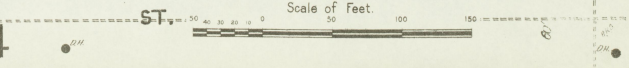
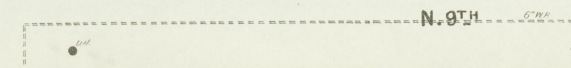
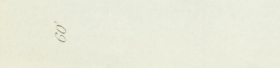
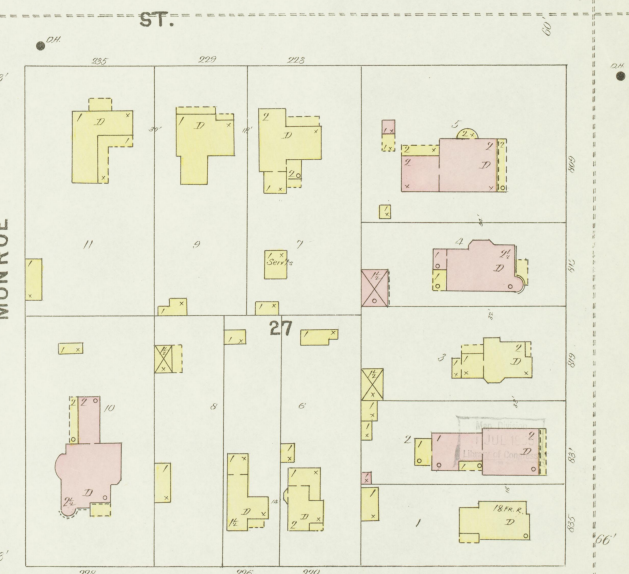
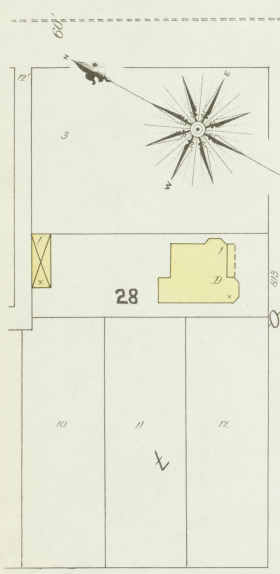
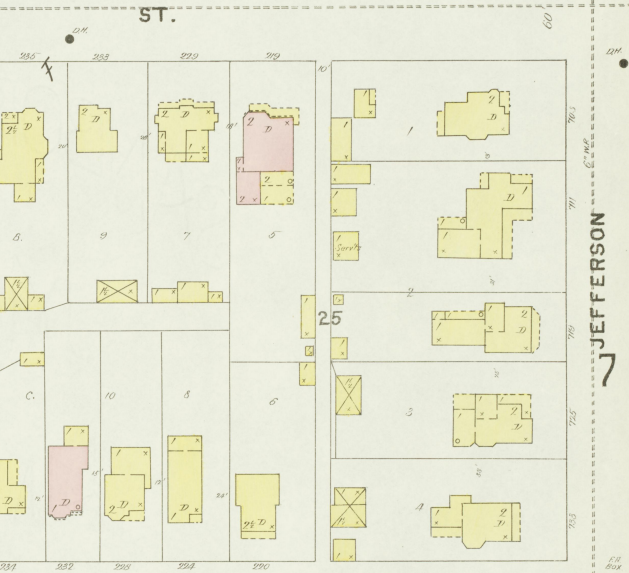
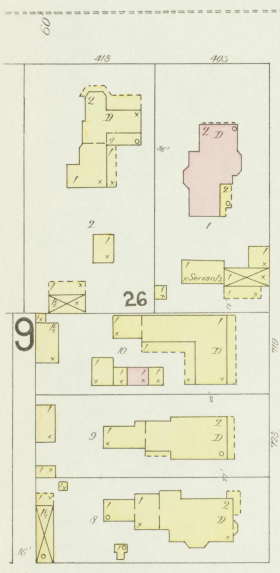
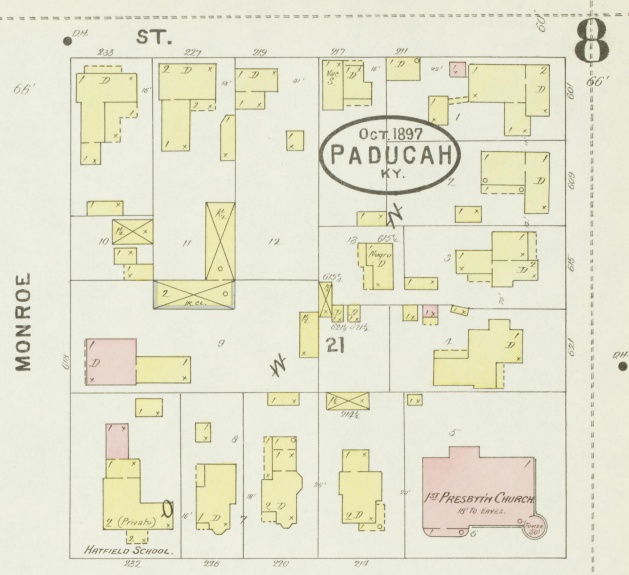
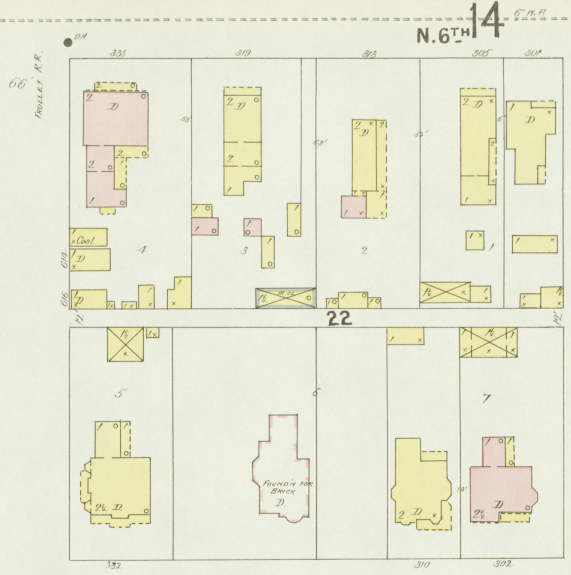
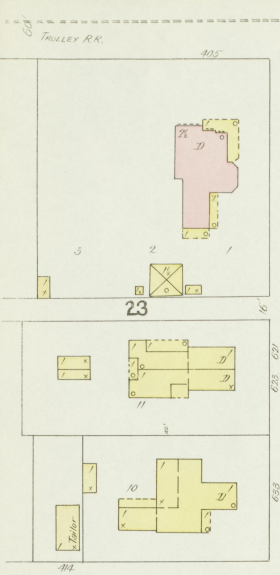
N. 9<sup>TH</sup> ST.

S. 9<sup>TH</sup> ST.

3

6





N. 6<sup>TH</sup> 14

ST.

N. 7<sup>TH</sup>

ST.

N. 8<sup>TH</sup>

ST.

N. 9<sup>TH</sup>

ST.

MONROE

MADISON

MONROE

JEFFERSON

Scale of Feet.





Oct. 1897  
**PADUCAH**  
 KY.

**JEFFERSON**  
 1<sup>ST</sup> DIST. PUBLIC SCHOOL.  
 HEAT FURNACE

NOTES: - All lots are 60' wide unless otherwise noted.  
 - Lots marked with 'D' are double lots.  
 - Lots marked with 'X' are vacant.  
 - Lots marked with 'R' are railroad property.  
 - Lots marked with 'H' are Harrison property.  
 - Lots marked with 'T' are Trolley R.R. property.

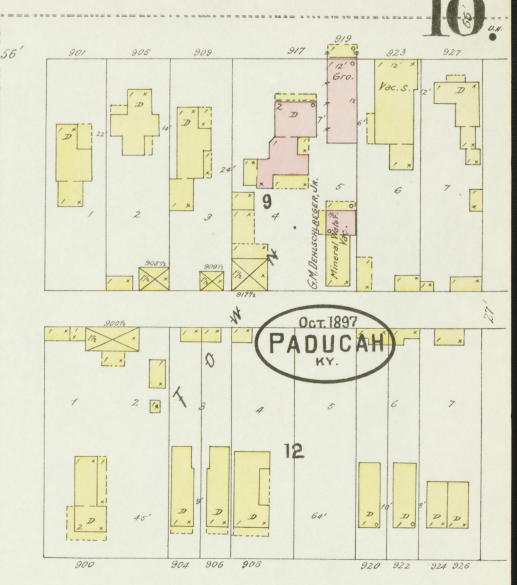
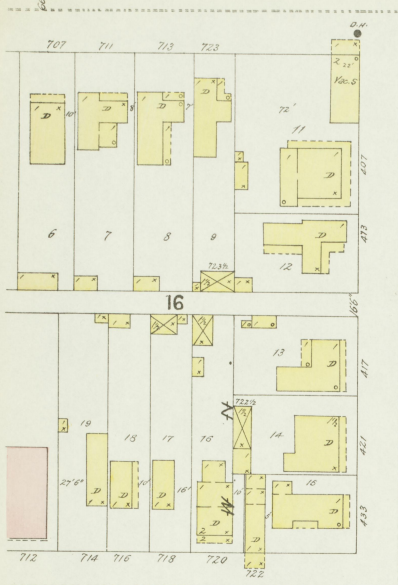
*Railroad Property.*

*HARRIS, FLOURING, & HARRIS PROPERTY.*

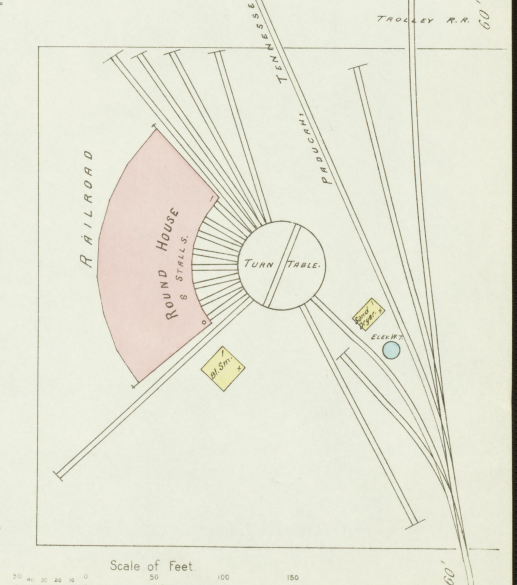
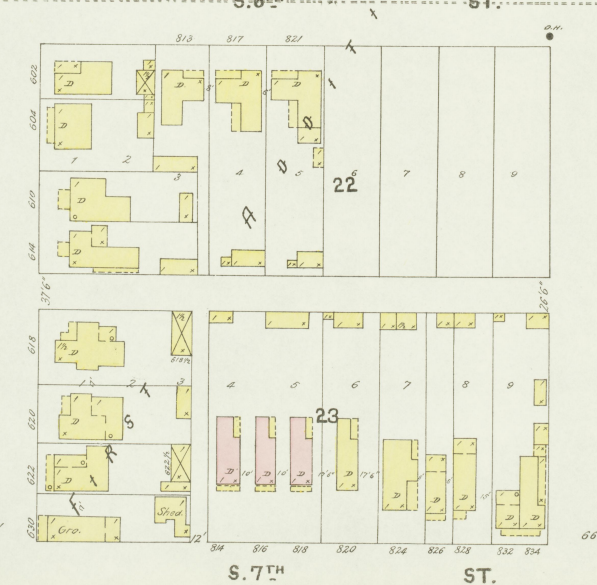
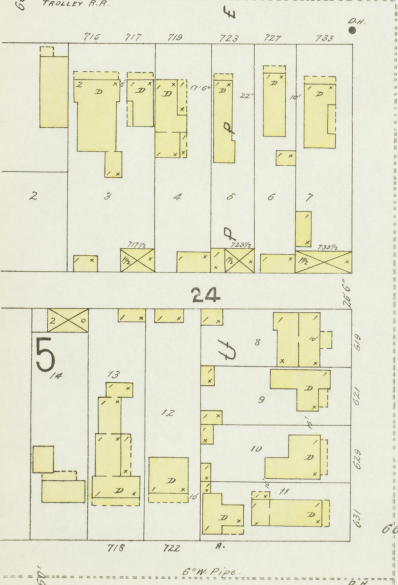
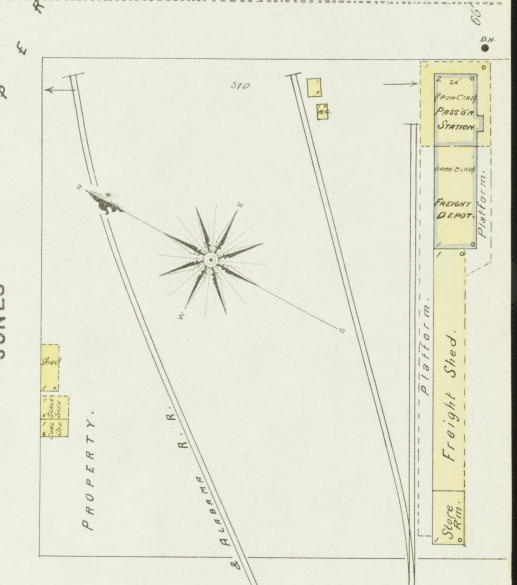
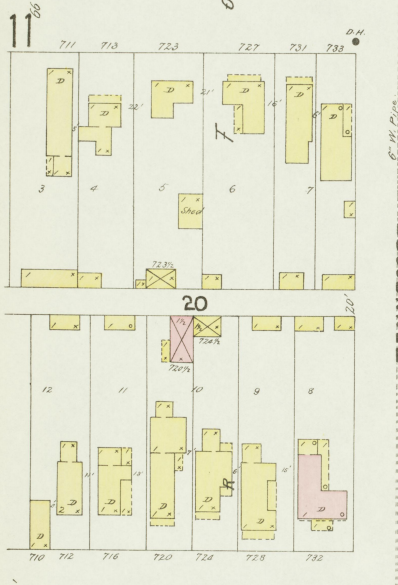
*V.A. McCUTCHEN  
 TOBACCO STEMMY  
 Stem Rm 1<sup>st</sup>  
 Hanging 2<sup>nd</sup> & 3<sup>rd</sup>  
 (Green)*

*PADUCAH POTTERY  
 J.B. BRUER*

*JEFFERSON  
 1<sup>ST</sup> DIST. PUBLIC SCHOOL.  
 HEAT FURNACE*



Oct. 1897  
PADUCAH  
KY.



Scale of Feet  
0 25 50 75 100 150

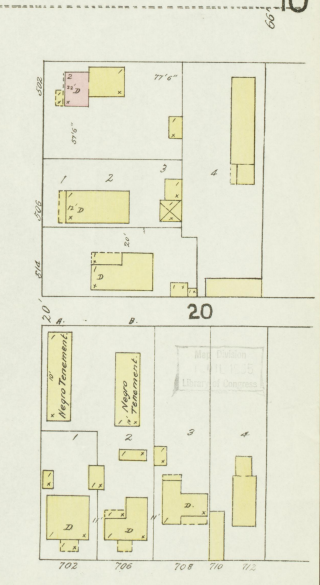
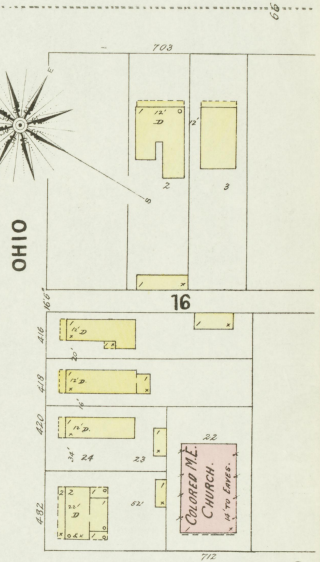
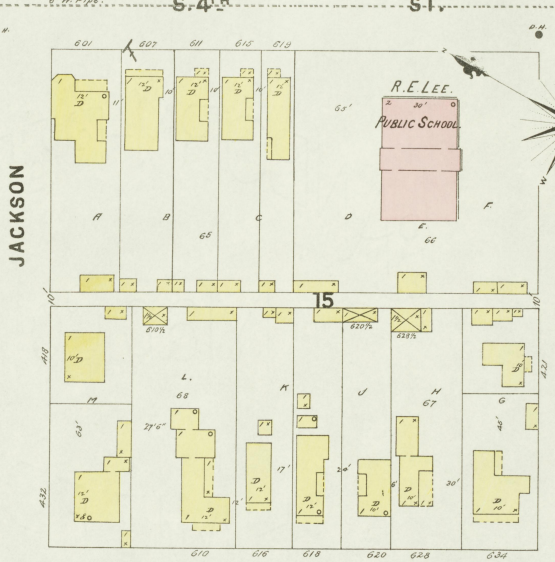
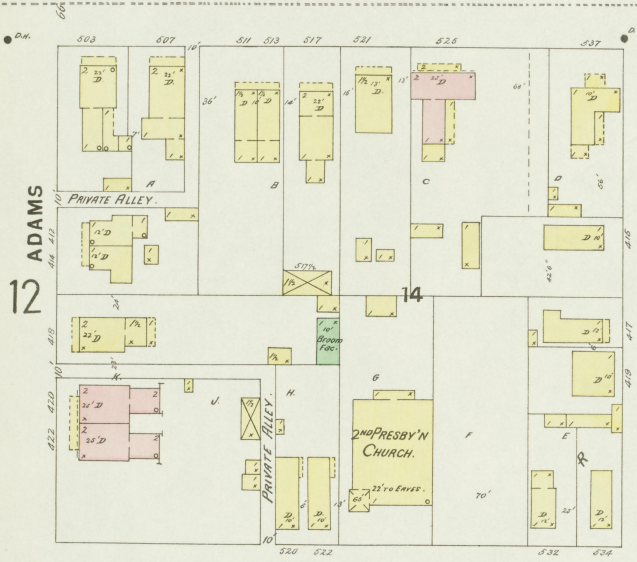
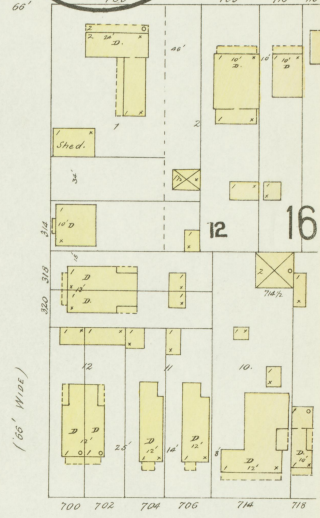
TENNESSEE

JONES

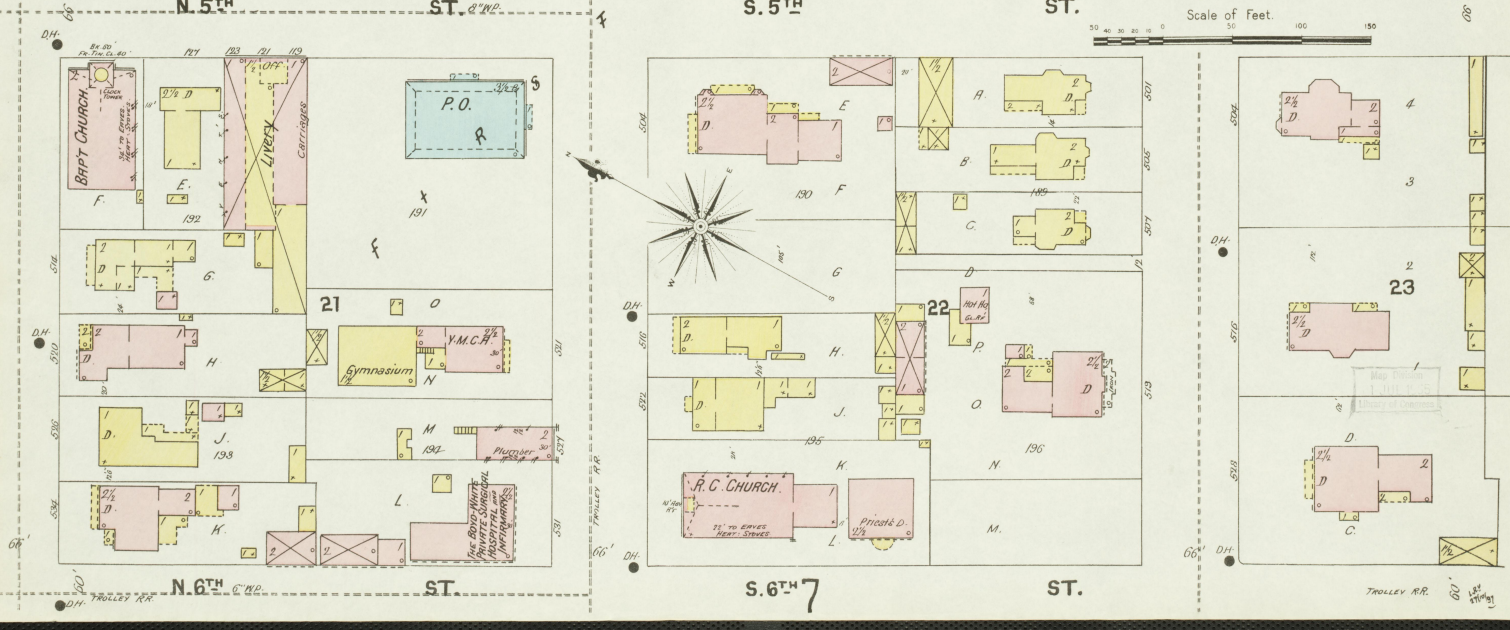
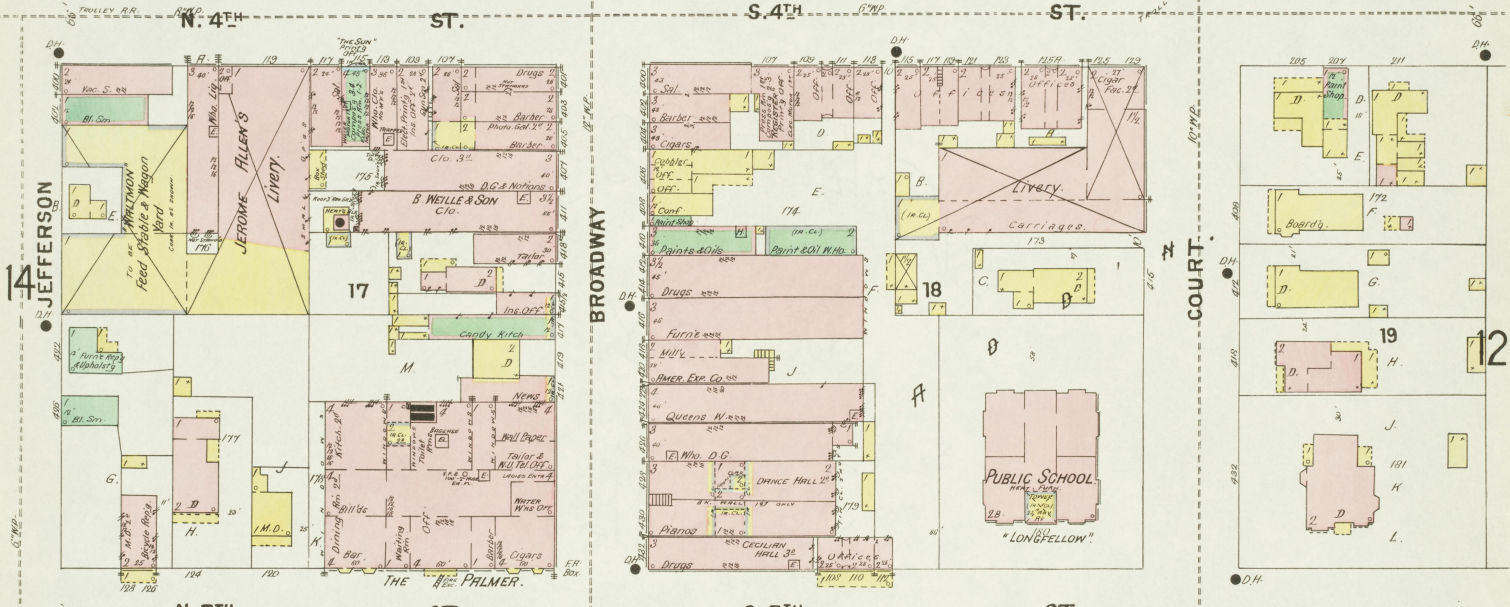
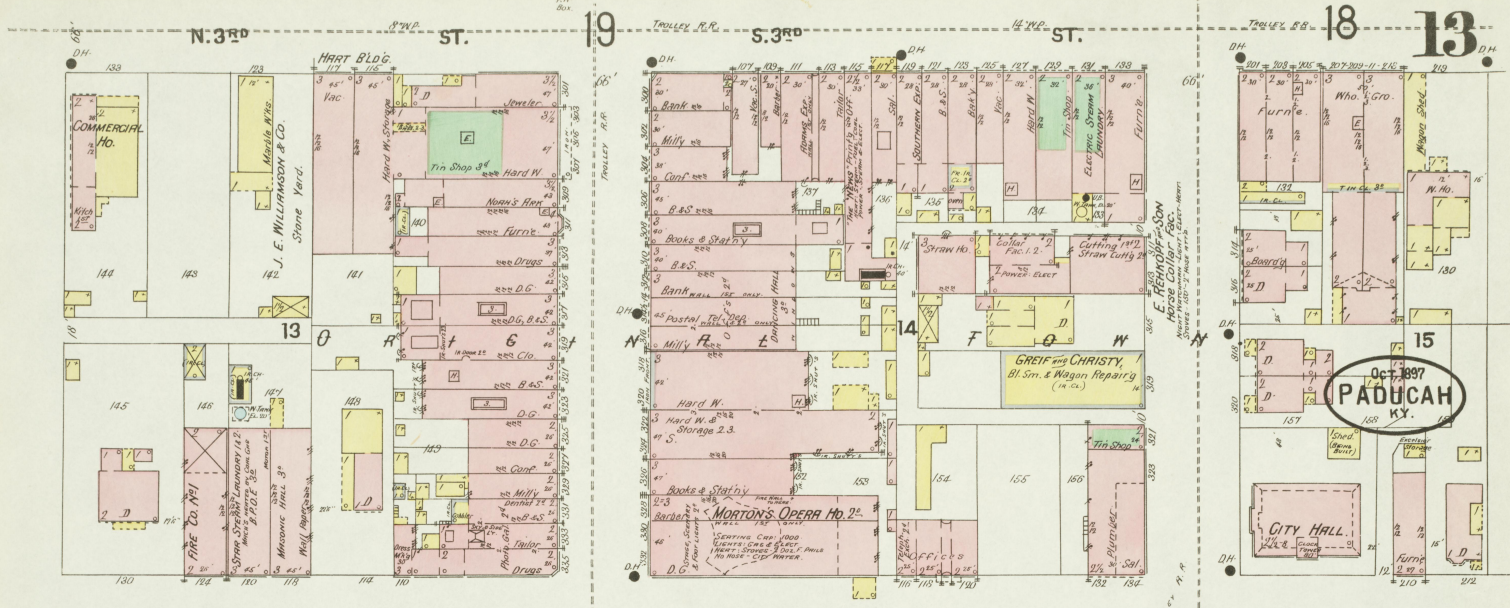
S. 7TH ST.

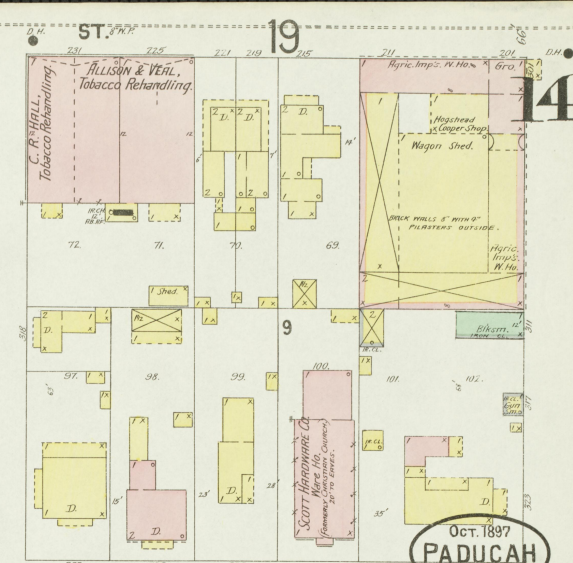
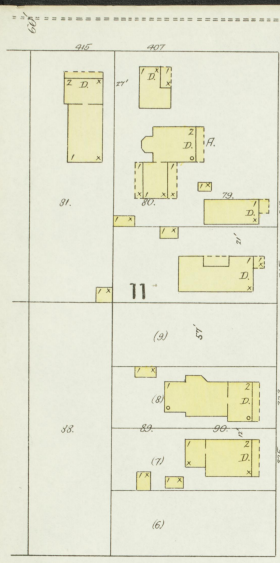
S. 7TH ST.

S. 7TH ST.

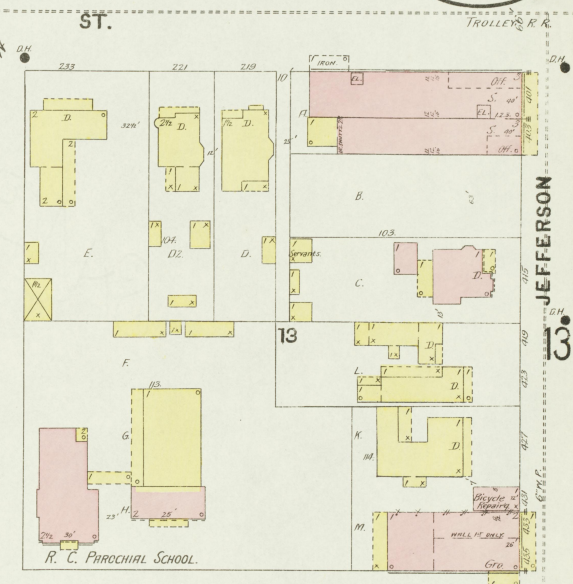
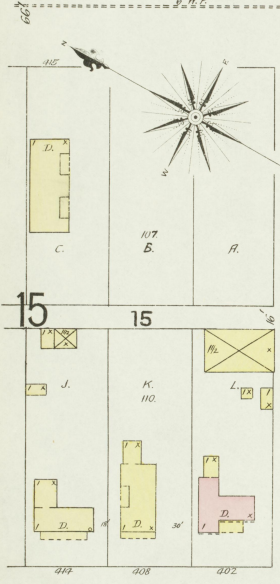




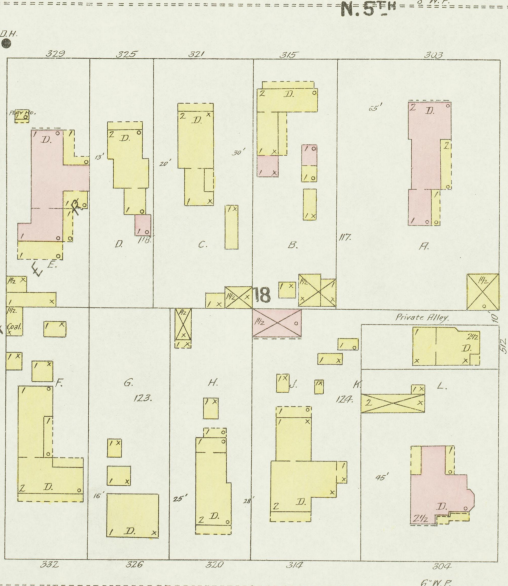
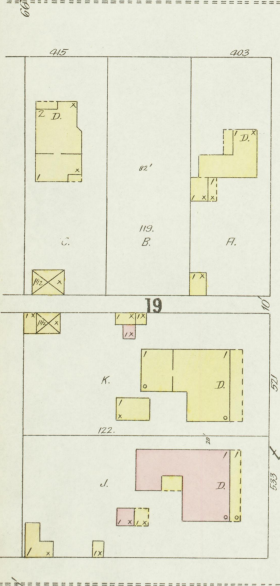




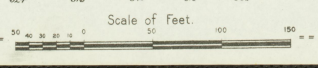
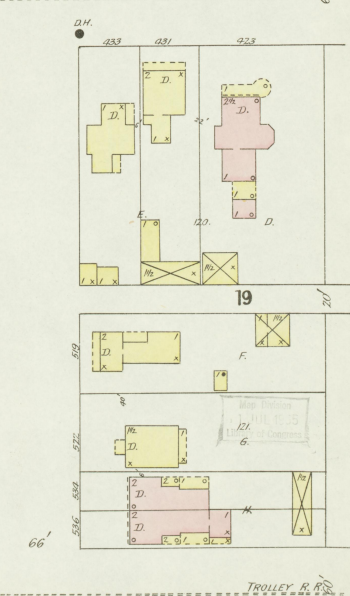
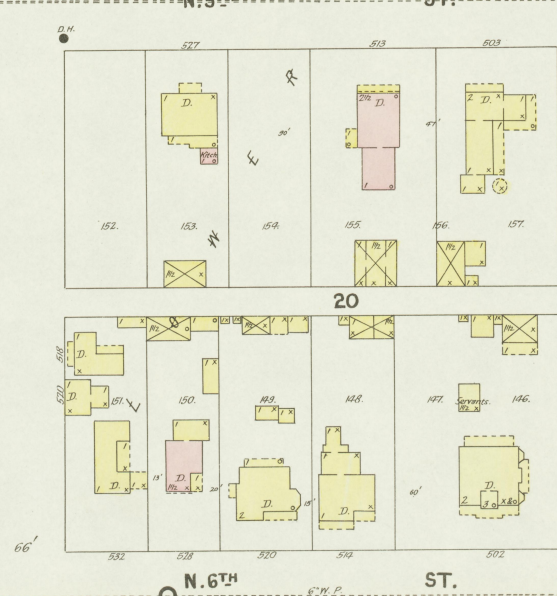
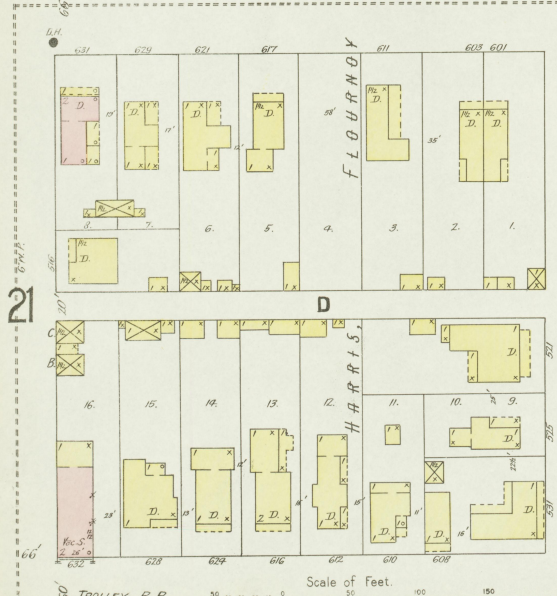
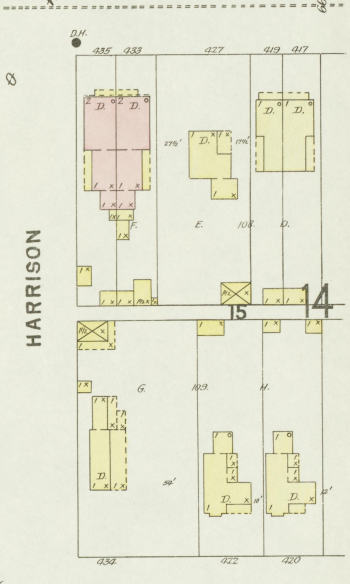
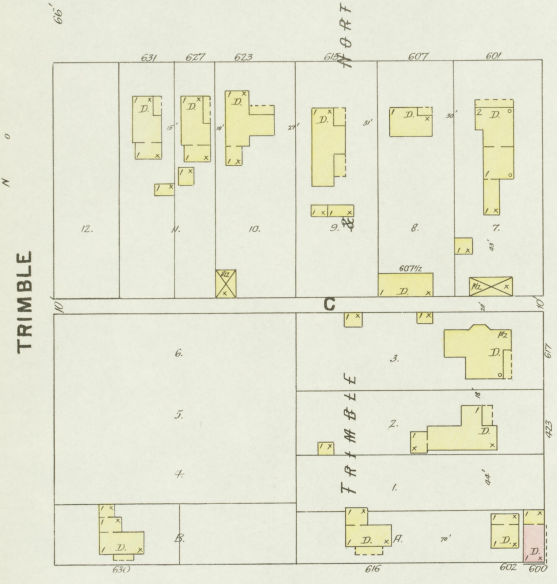
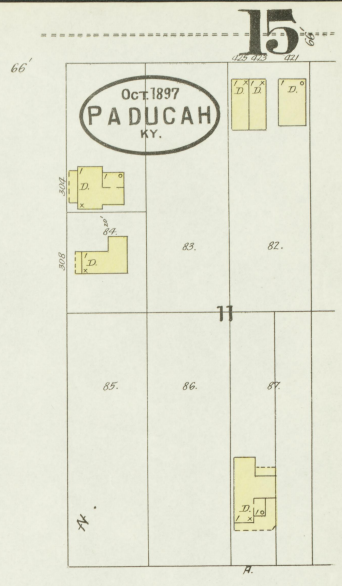
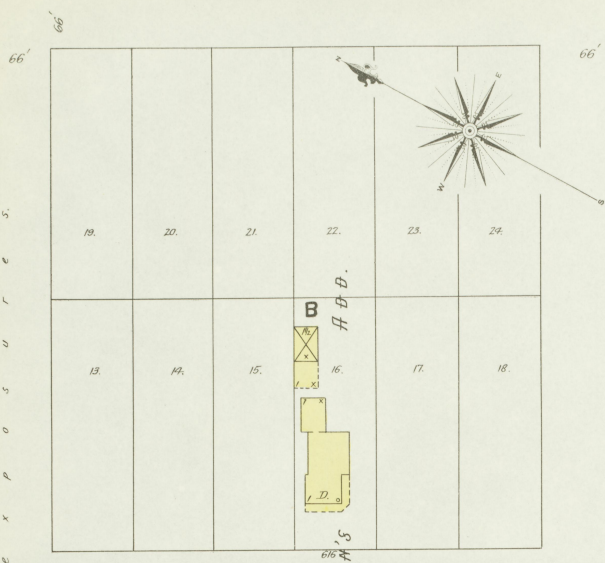
OCT. 1897  
**PADUCAH**  
 KY.



R. C. PAROCHIAL SCHOOL.



Trolley R. R. Scale of feet 0 50 100 150 N. 6TH ST. Trolley R. R.

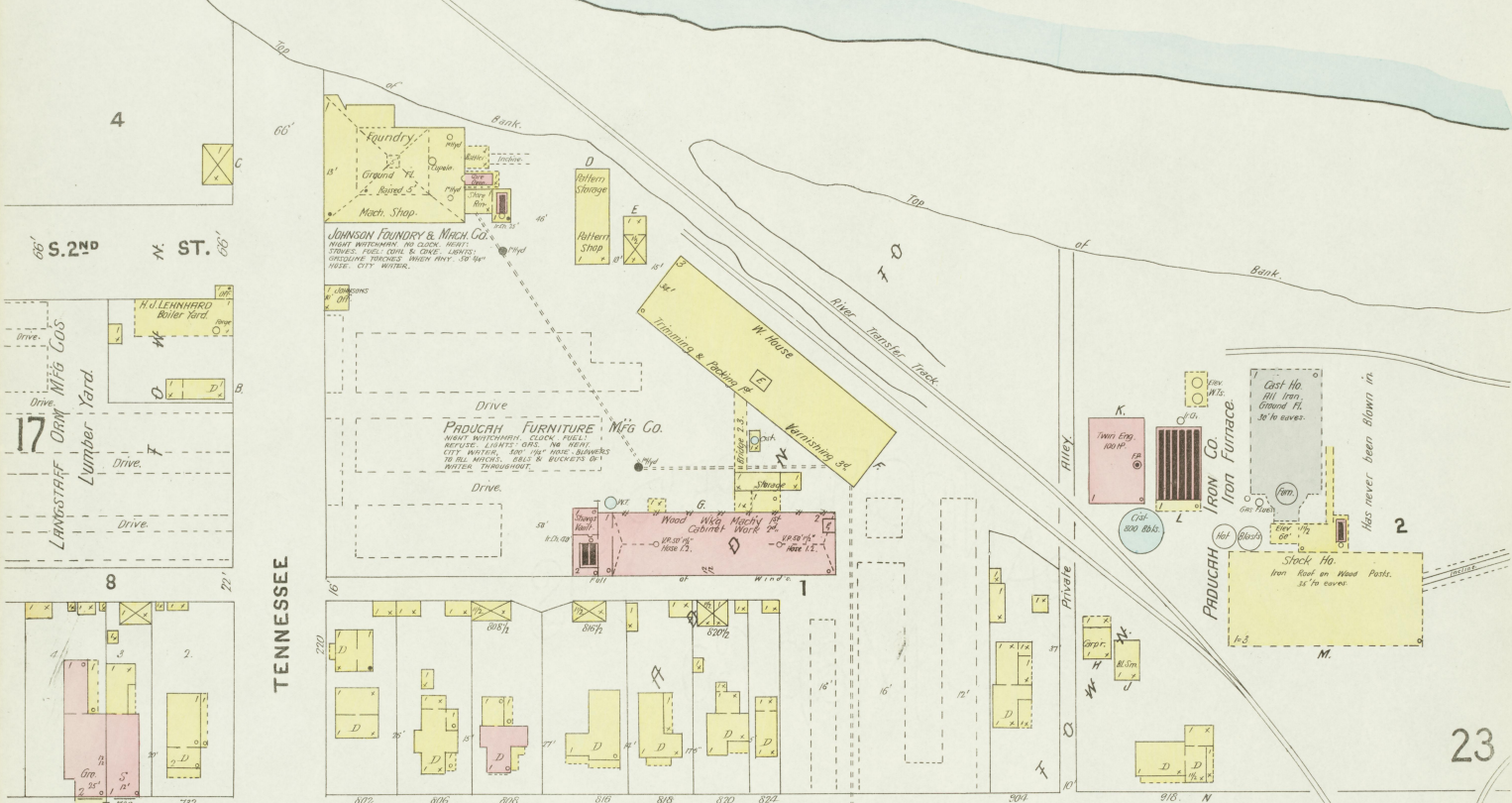
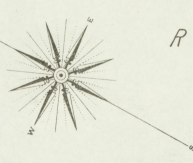


9

15



Tennessee River



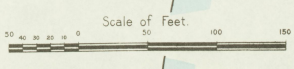
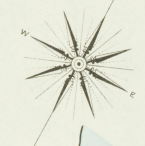
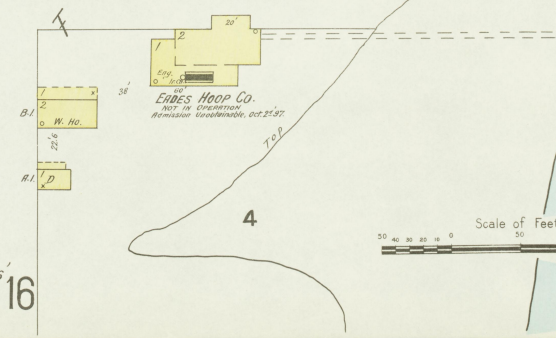
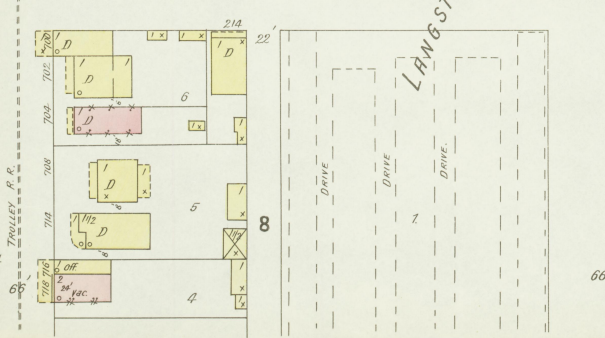
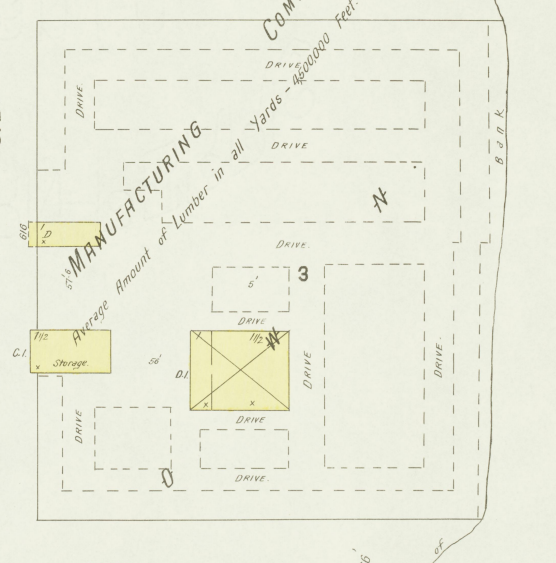
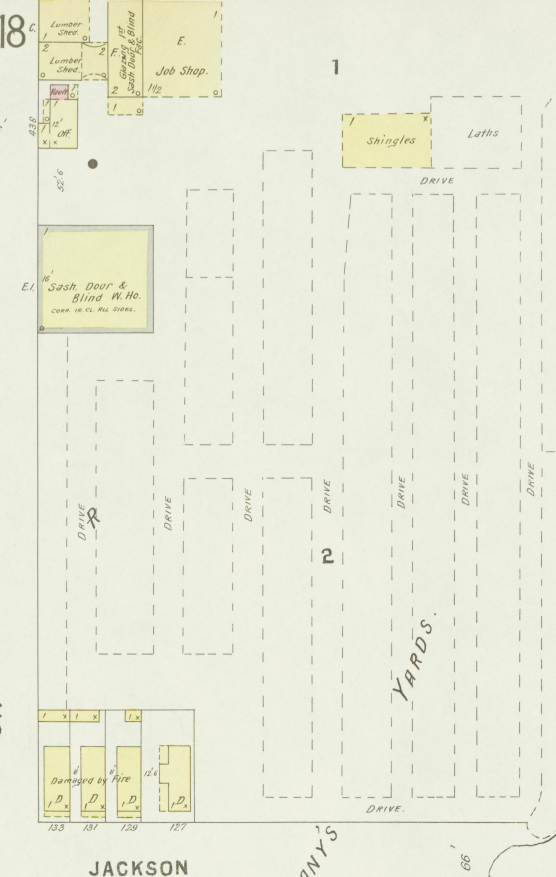
TENNESSEE



Scale of Feet.

NORTON

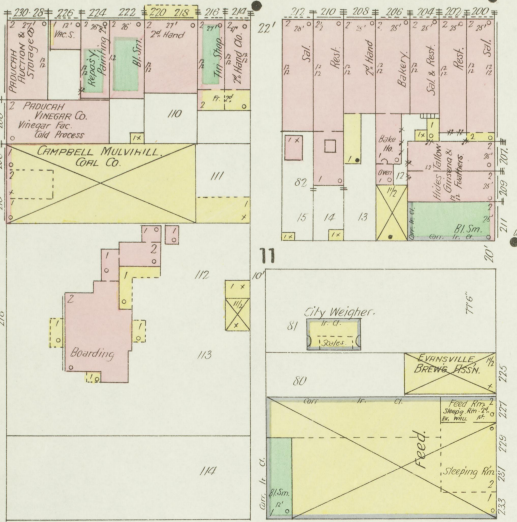
Oct. 1897  
PADUCAH  
KY.



MADE BY  
T. H. H. CO.  
CITY OF PADUCAH, KY.

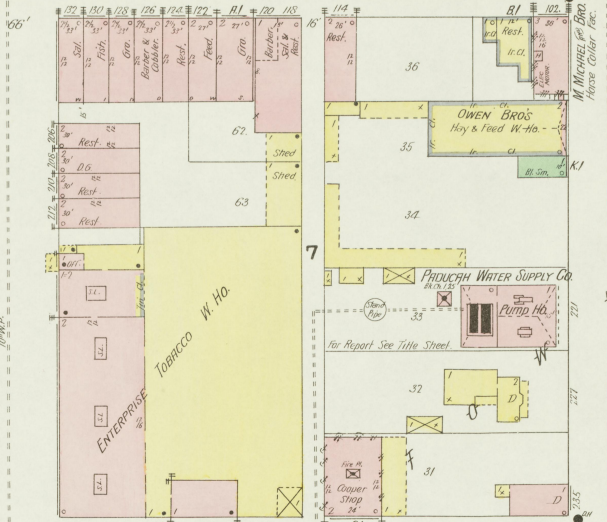
Trolley R.R.

13



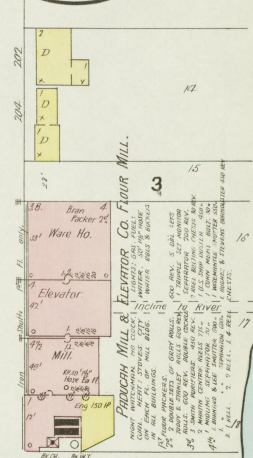
19

COURT



18

Oct. 1897  
PADUCAH  
KY.

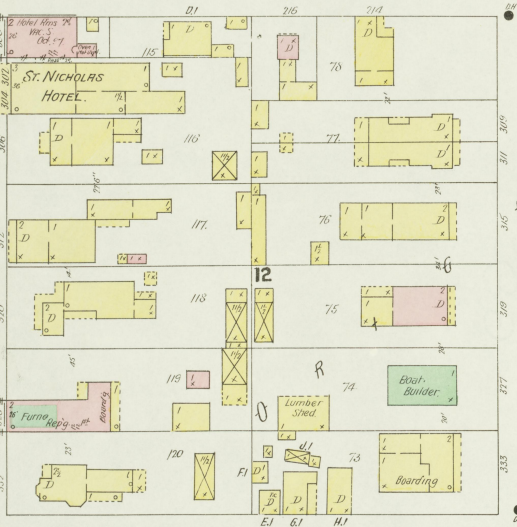


WASHINGTON

ST.

S. 3 RD

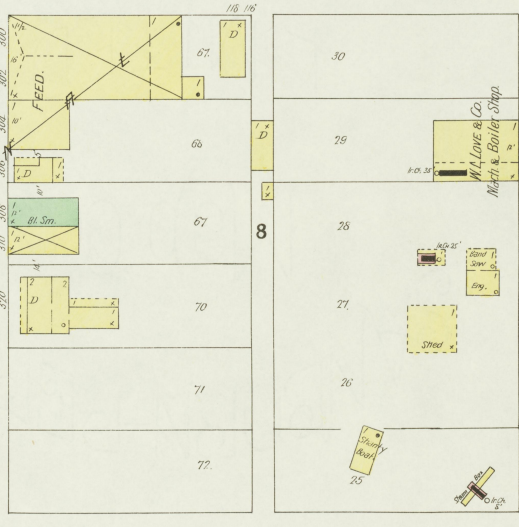
12



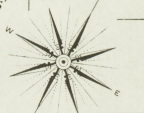
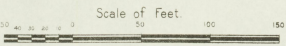
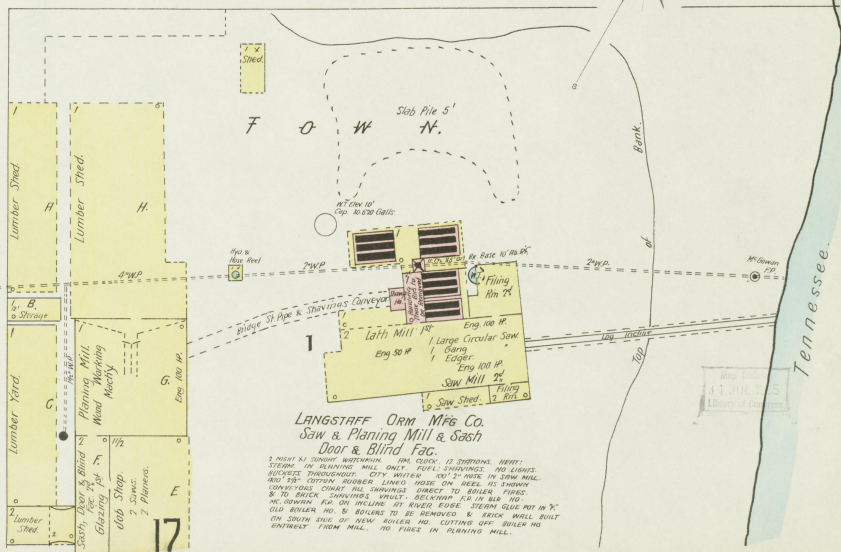
ST.

S. 2ND

17

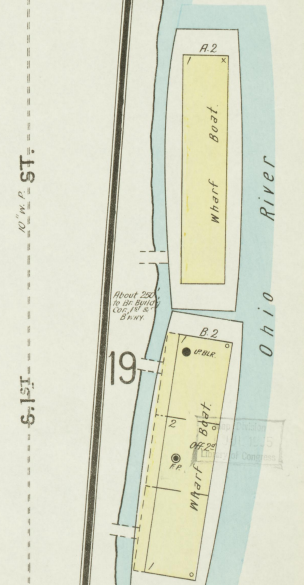
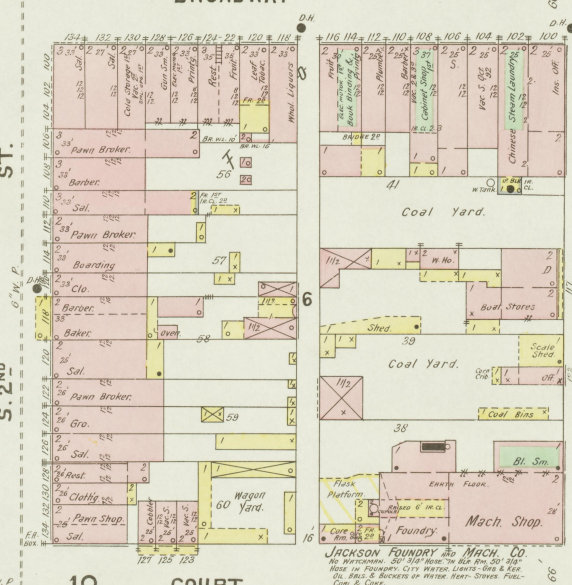
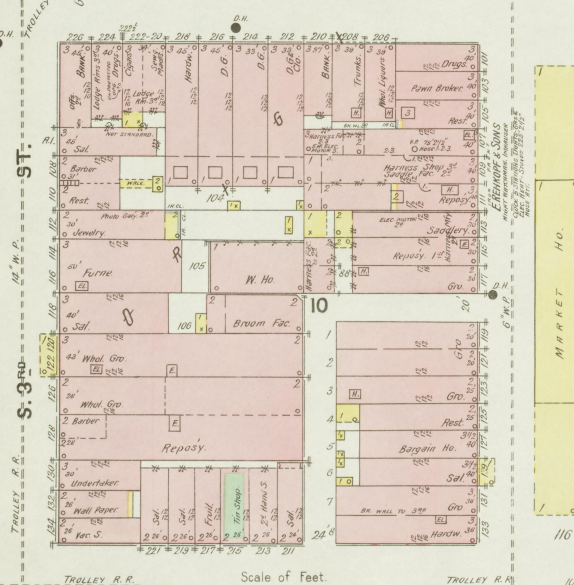
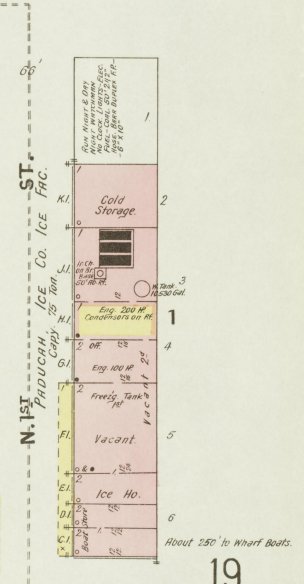
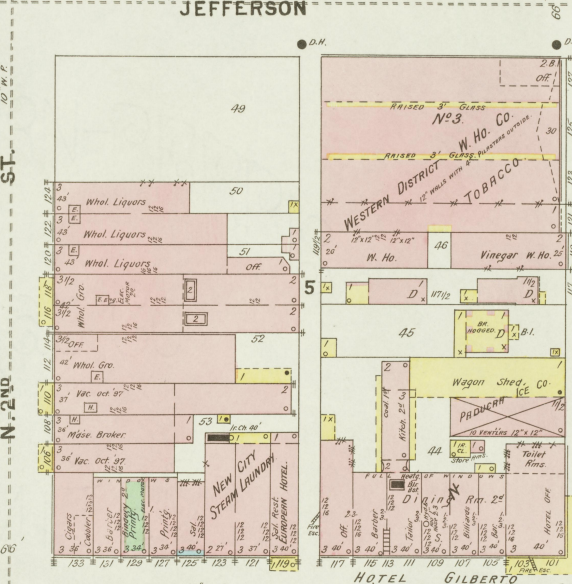
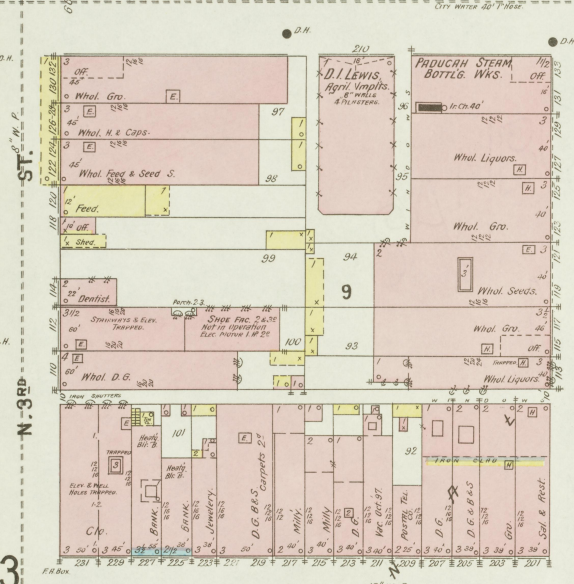
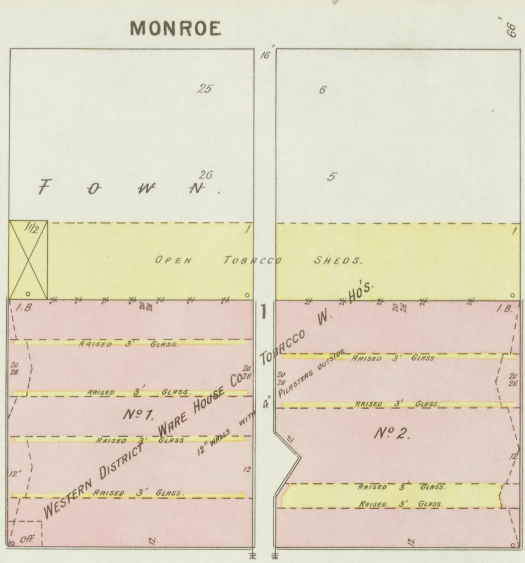
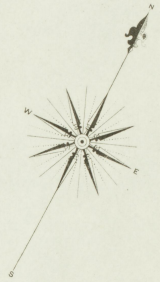


CLARK



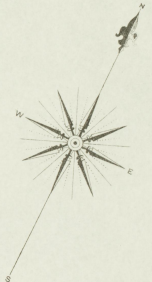
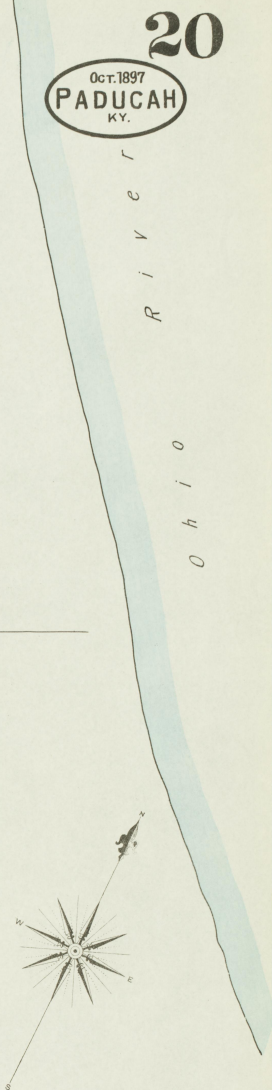
Tennessee River

Oct. 1897  
PADUCAH  
KY.

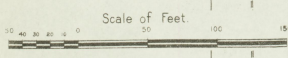
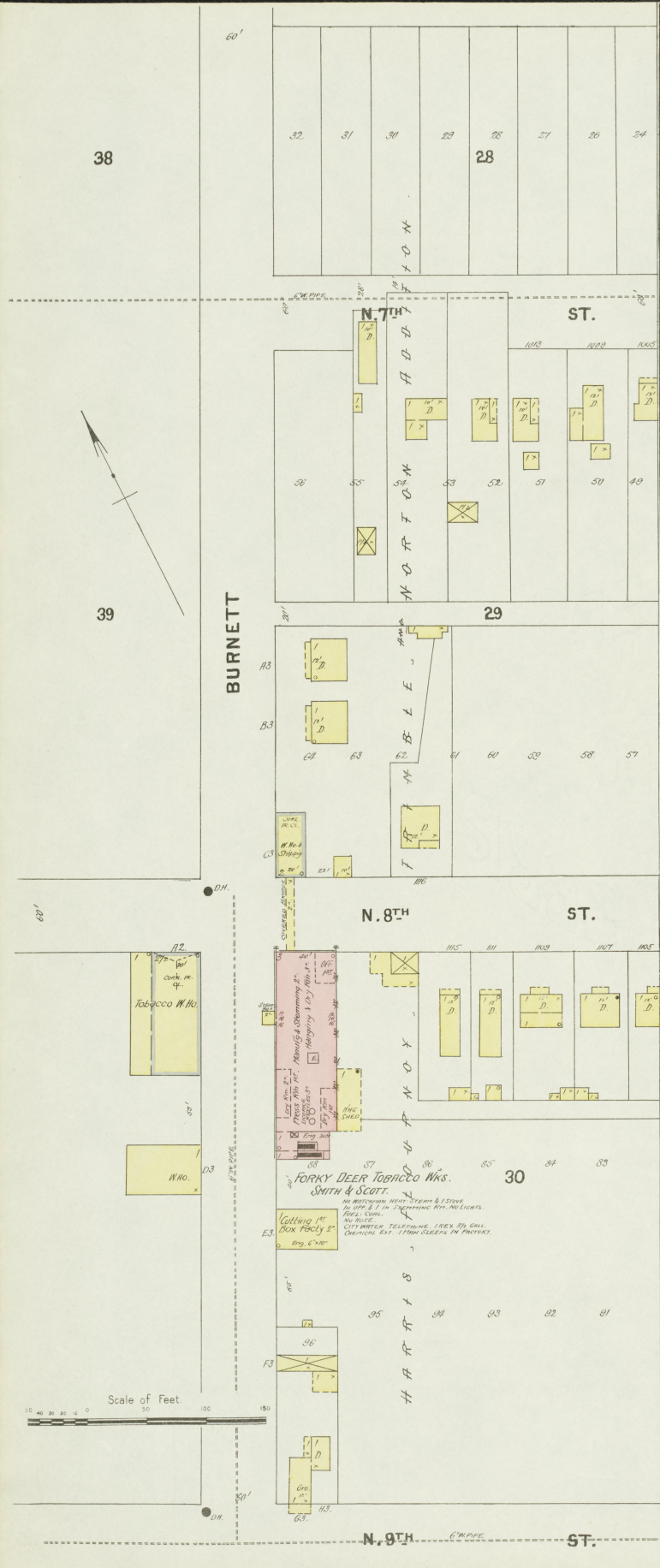
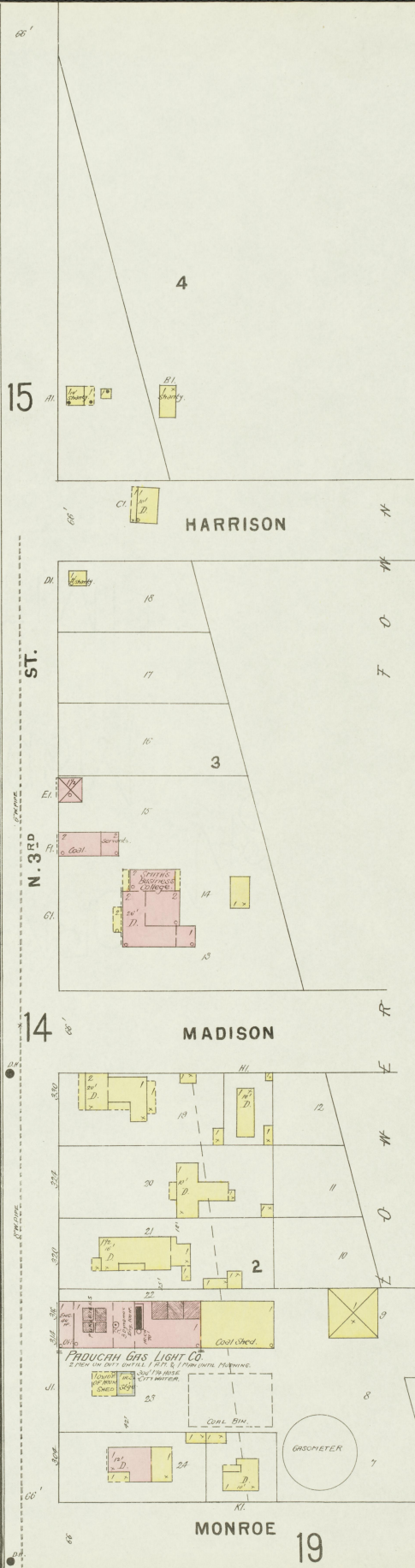


Scale of feet

18 COURT



Map of Paducah, Ky. Library of Congress

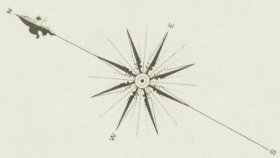


N. 5<sup>TH</sup>

ST.

OCT. 1897  
PADUCAH  
KY.

21



Cattle Pen  
G  
PLATFORM  
SWITCHES

(P. & C.)  
CHICAGO SHORT LINE  
Freight Depot.

15

N. 6<sup>TH</sup>

ST.

UNION DEPOT  
Lunch Rm.  
Exp. S.  
Baggage

Vacant  
BANKING, MFG. & STORAGE W. H. CO.  
Hotel  
2<sup>D</sup> CHRISTIAN CHURCH  
1872

TRIMBLE

9

N. 6<sup>TH</sup>

ST.

CAMPBELL

N. 7<sup>TH</sup>

ST.

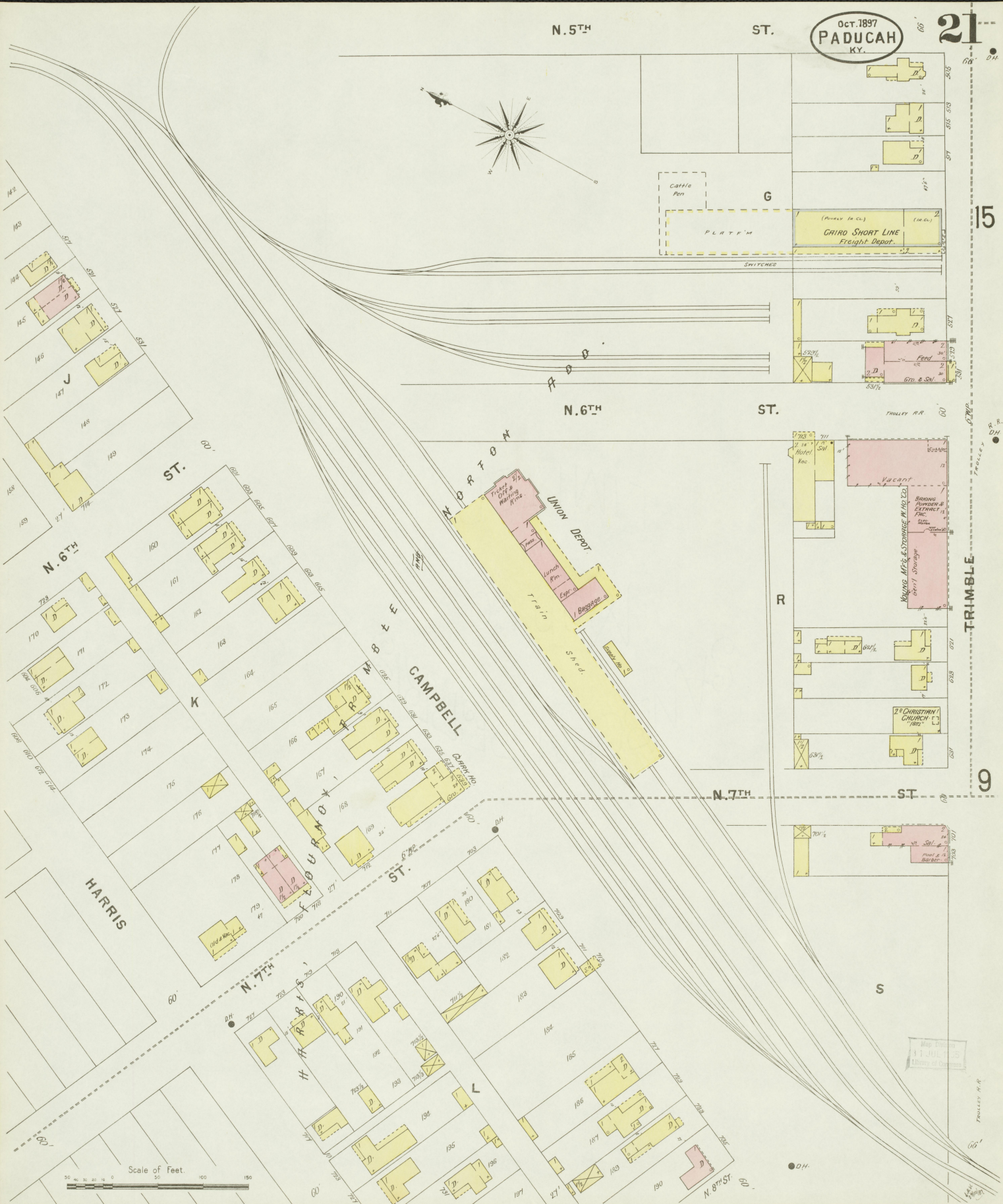
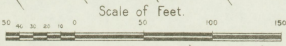
HARRIS

N. 7<sup>TH</sup>

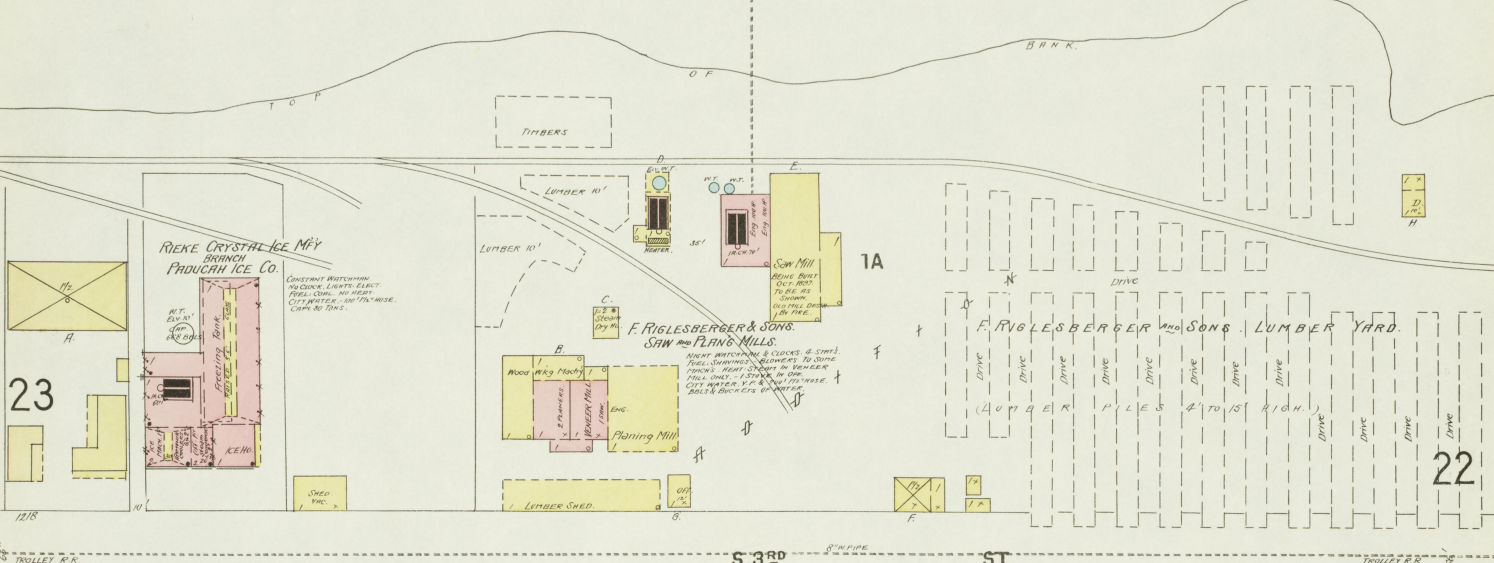
ST.

S

N. 8<sup>TH</sup> ST.



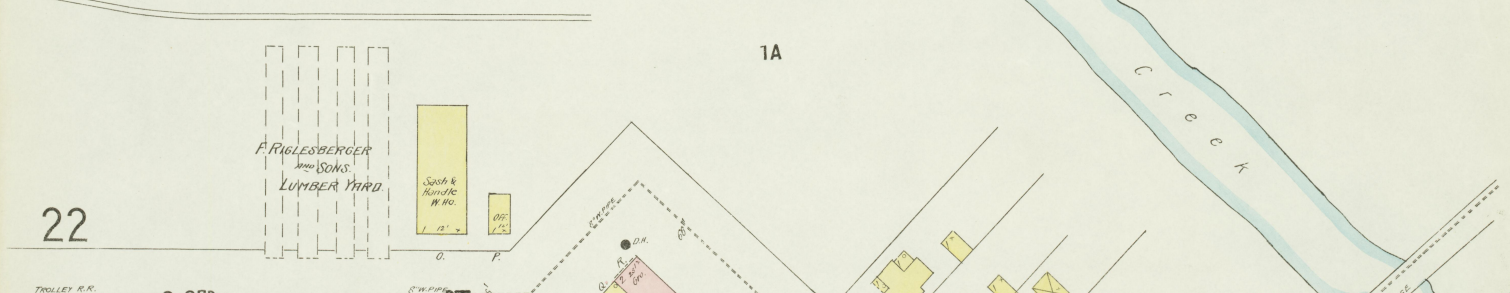
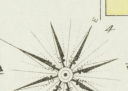
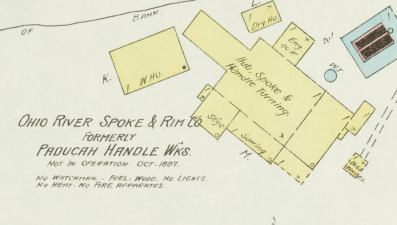
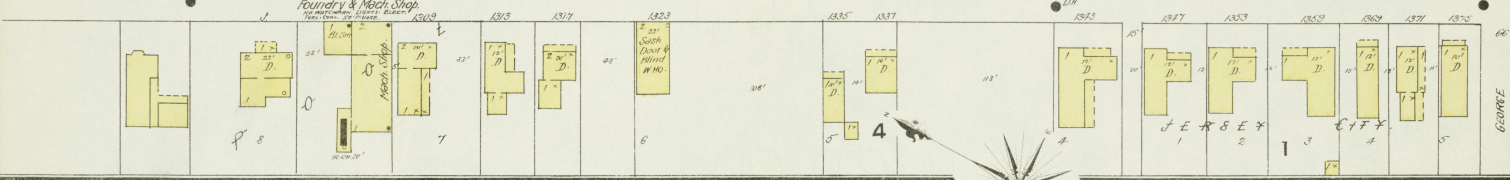
NO EXPOSURE TO TENNESSEE RIVER



23

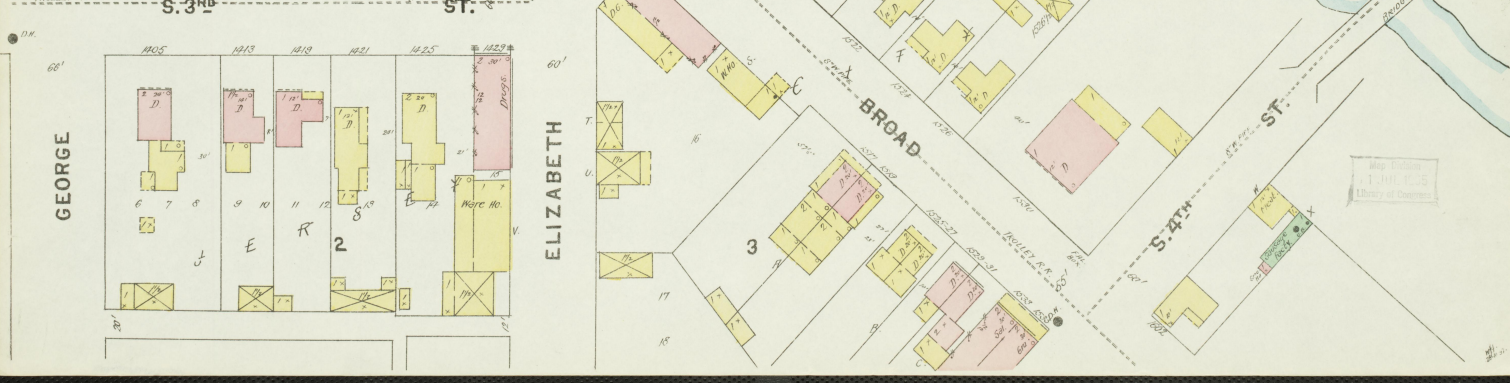
22

**S. 3<sup>RD</sup> ST.**



22

1A

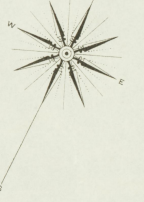


Arch. Division  
Library of Congress

OCT. 1897  
PADUCAH  
KY.

PADUCAH IRON CO.

Tennessee River



Scale of Feet. 0 50 100 150

16

22

NORTON

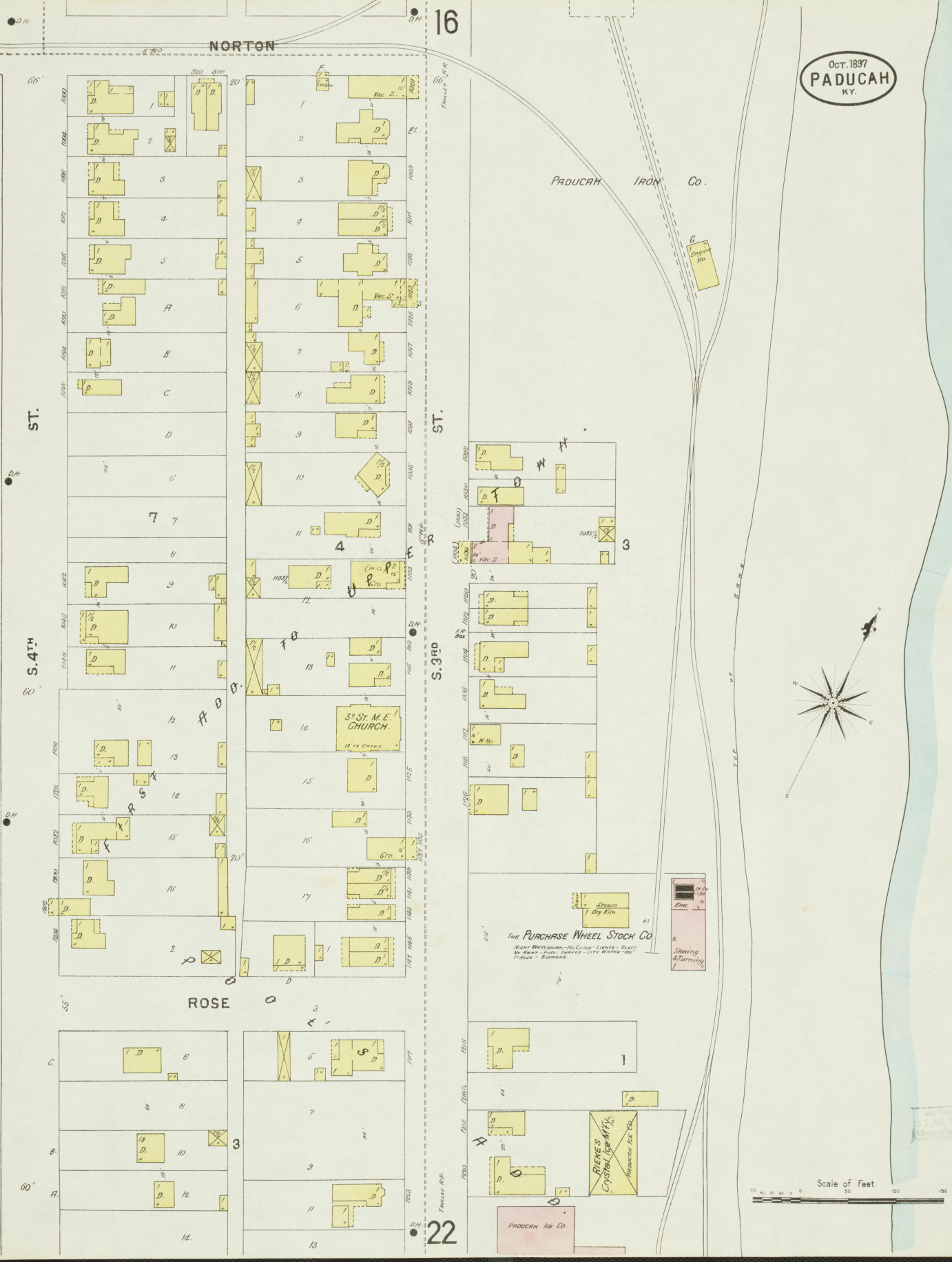
ROSE

ST.

S. 4<sup>TH</sup>

ST.

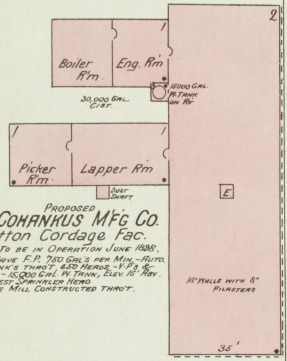
S. 3<sup>RD</sup>





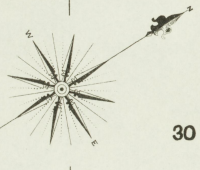
Oct. 1897  
**PADUCAH**  
KY.

TAKEN FROM ARCHITECT'S PLANS



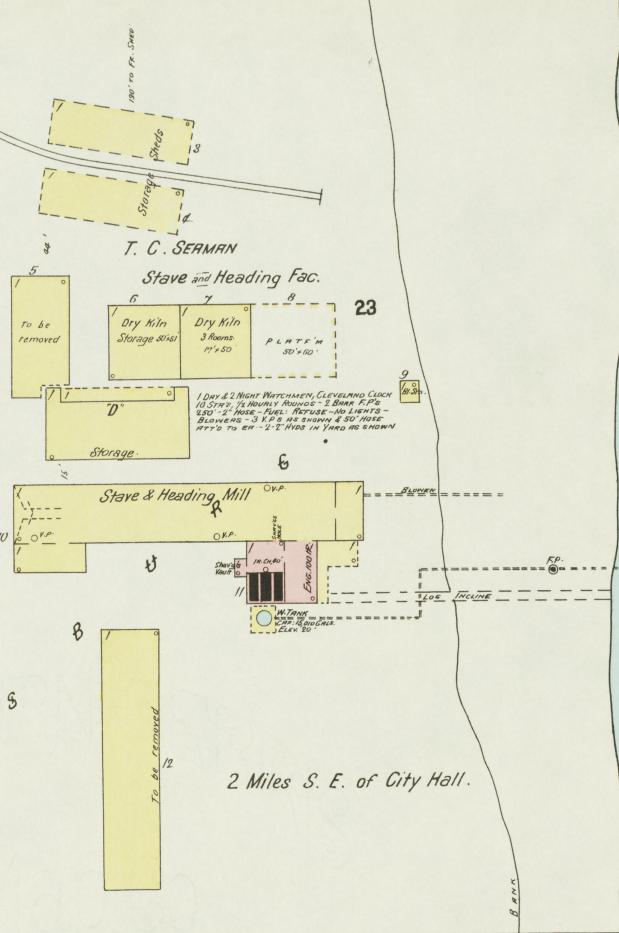
BOYD ST.

N. NINTH ST



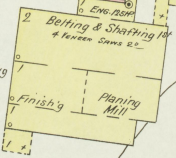
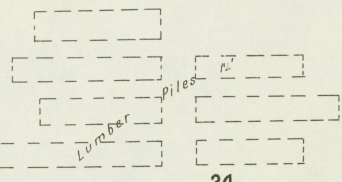
MILL

MEYERS



**PADUCAH VENEER AND LUMBER CO.**

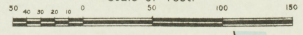
1 NIGHT WATCHMAN, NO CLOS. - LIGHTS: K. OIL  
LUMBER - PILES, SHEDS - 5000 - 1000 - 1000  
3 1/2 GAL. CEMENTS - UNION MFG CO. P.P. - BALS  
& BUCKERS.



River.

Tennessee

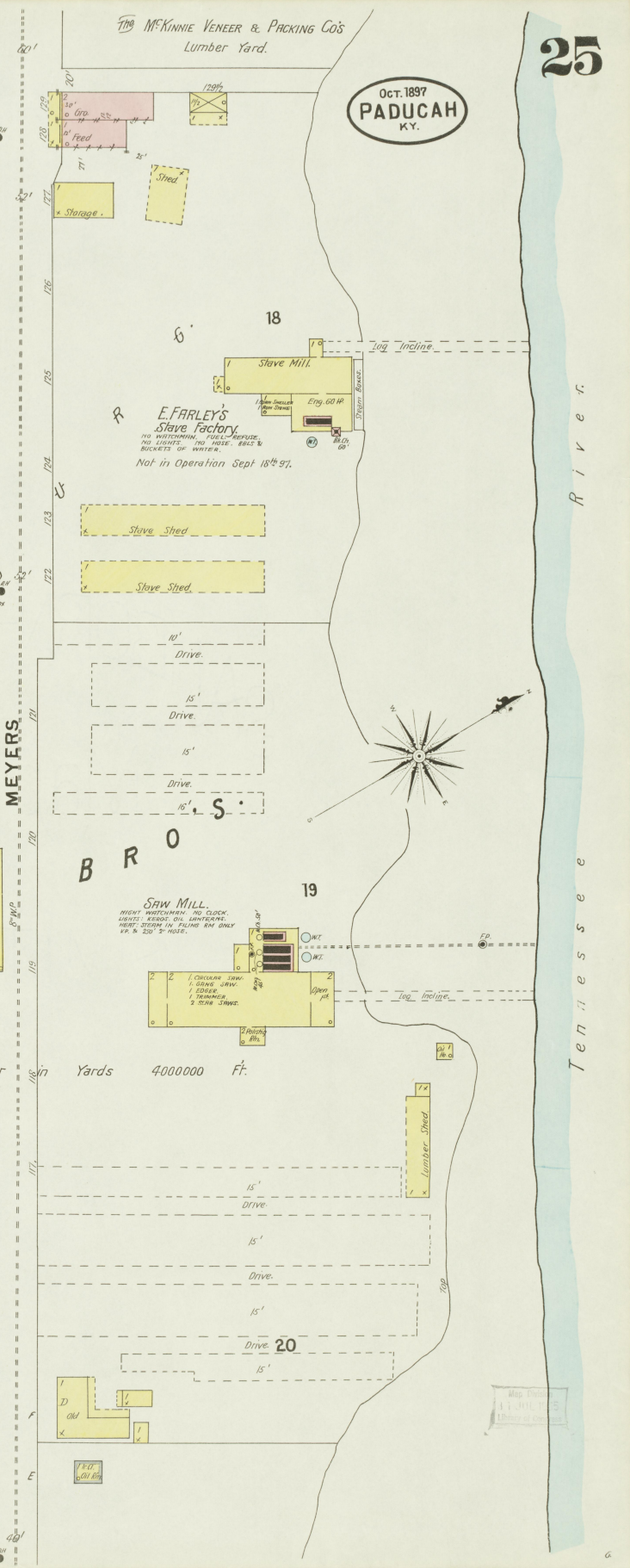
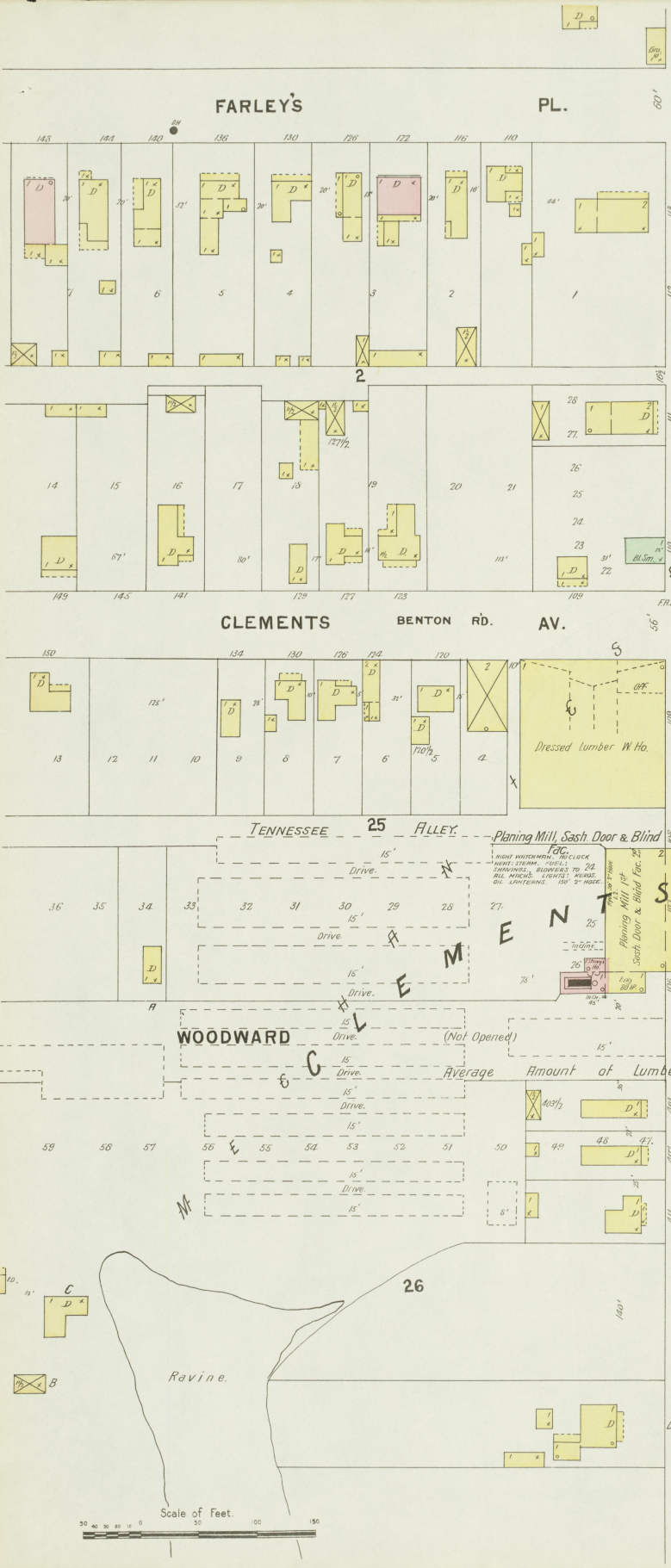
Scale of Feet.



THE  
1897  
Library of Congress

1897

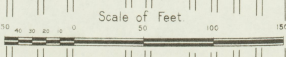
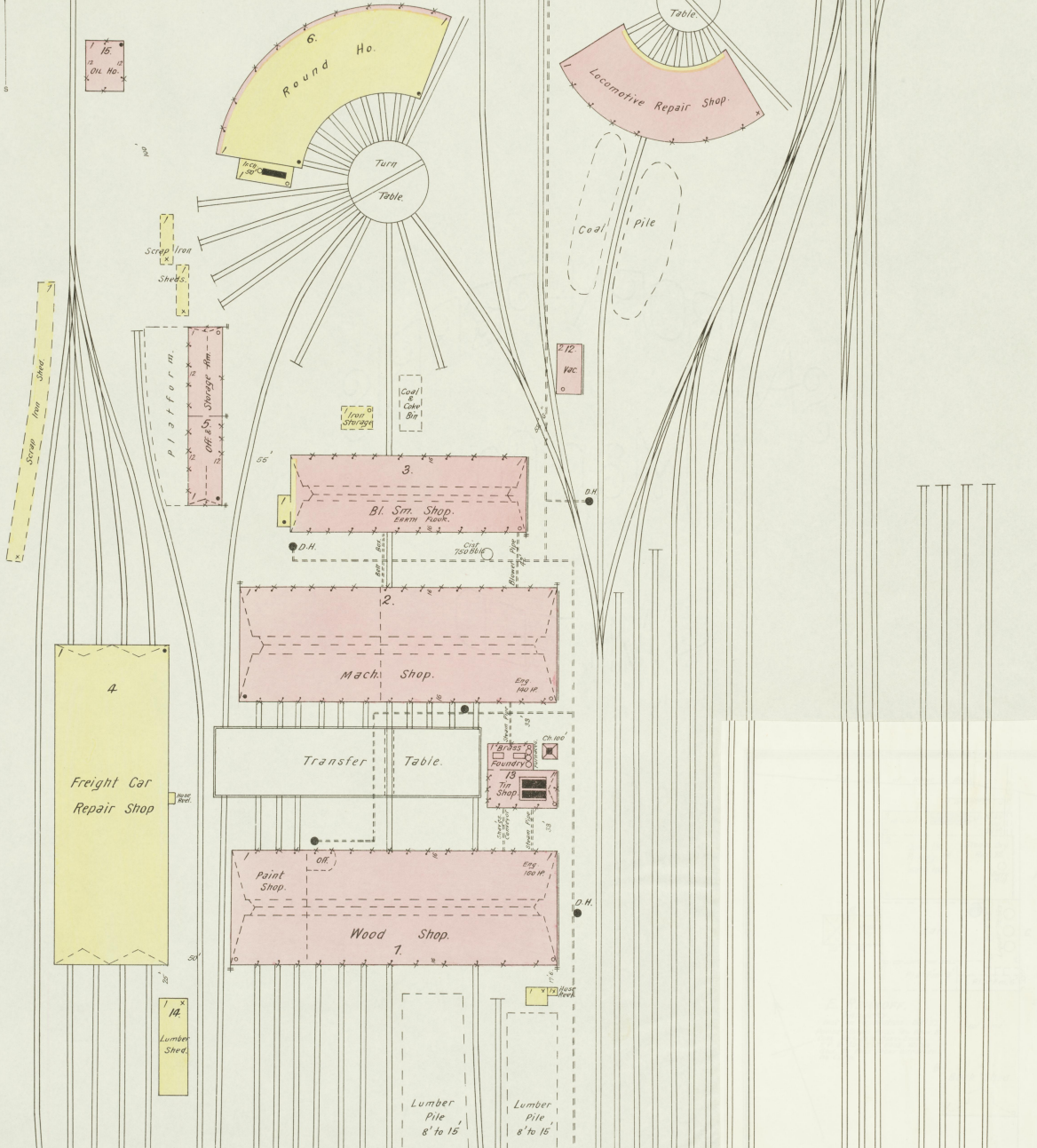
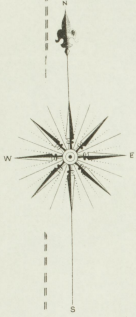
Oct. 1897  
PADUCAH  
KY.



ILLINOIS CENTRAL R.R. REPAIR SHOPS  
(FORMERLY NEWPORT NEWS & MISSISSIPPI VALLEY.)

2 NIGHT & 1 DAY WATCHMAN, NO CLOCK. 1 No. 4 1/2 DIAMETER F.P. IN BLDG. No. 1000  
NEW 2 1/2" COTTON RUBBER LINES HOSE. DISTRIBUTED AS FOLLOWS: 2 PORTABLE REELS  
WITH 350' ON EACH. 5 STATIONARY REELS TO BE PUT UP WITH 350' ON EACH. ALWAYS  
RETENDED 250' (250' MAX. STATIONARY COTTON RUBBER HOSE, COIL & COILS. REEL-STONES, LUBRI-  
CANTS, RAILS & BUCKETS OF WATER. THROUGH: 12 BARBECOCK & OIL EXTENSORS (CHEM.)  
12 WETWORK COOKS, EXTENSORS.

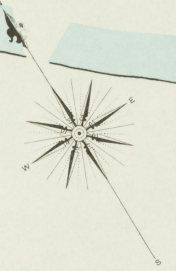
NO EXPOSURE ANY SIDE



Map drawn  
by H. L. S.  
1897

No Exposure - 600' to Ohio River

Tennessee  
River



VICTORIA MILLS  
JOS. GARDNER & SONS.  
MTT Wood Shuttles.

No Watchman, ENGINEER LIVES ON PREM.  
FUEL: COAL & REFUSE - NO HEAT - NO P.  
WINDS - LIGHTS: INC. ELECT.

E. REHKOFF,  
Tannery.

NOT IN OPERATION - NIGHT WATCHMAN - NO  
CLOCK - FUEL: COAL & WASTE - NO HEAT - NO P.  
WINDS - NO LIGHTS - NO REFUSE.

J. L. KILGORE AND CO  
Heading Mill.

NIGHT WATCHMAN, NO CLOCK - F.P. & B.O.  
FUEL: REFUSE - DRAINAGE STOKES, F.P. & B.O. -  
REFUSE.

J. L. KILGORE AND CO  
Heading Mill.

NIGHT WATCHMAN, NO CLOCK - NO HEAT - NO HEAT  
FUEL: REFUSE - DRAINAGE STOKES, F.P. & B.O. -  
BBS & BUCKETS OF WATER.

N. 6TH ST.

BURNETT

BROADWAY

COURT

MEYERS

