

We the undersigned have examined the new Insurance Map of Maysville, Ky. made by the Sanborn Map & Publishing Company of New York and find it to be complete & accurate. We recommend it to be used by all Insurance Cos. represented in Maysville.

L. S. Sallee Secy of Board
Arthur M. Campbell
D. C. Sharp
T. S. D. Smith
J. S. Fleming
J. S. Sudd
W. S. Frank
W. Rogers
Mrs. Laura C. Dimmitt
M. S. Hutcheson
W. M. Stockton
R. L. S. Carroll
G. S. Bromberg

MAYSVILLE

KENTUCKY

MAP SANBORN LIMITED COMPANY PUBLISHING

Scale, 50 Ft. to an Inch 117 Broadway, New York

August 1886

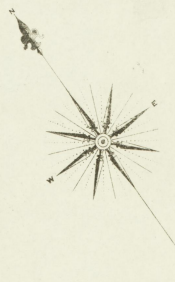
Copyright 1885 by the Sanborn Map & Publishing Co. Limited

POPULATION 10,000
Prevaling Winds
S.W. & W.W.

Water Facilities Maysville Water Works, Reservoir System. Reservoir situated 365 above Pump Well & 1,389 above low water mark. Average Pressure 42.5 lbs. per sq. inch. Total Pressure 152 lbs. Capacity of Reservoirs 2 1/2 Million Gallons. 2 High Pumps Capacity 1,500,000 & 2,000,000 Gallons per 24 hrs. 51 Double Hydrants. 22 Public Cisterns. Cisterns each 400 Bbls.

Fire Department Organized Volunteer Dept. 6 Independent Hook Cars, 3000 lbs. Hose, 1 Hook & Ladder Truck, 4 Hand Engines, not in use.

KEY	
1/2" (1/2")	FIRE HALL, 8 ft. AS ROOF
1/4" (1/4")	12 - "
1/8" (1/8")	6 - "
1/16" (1/16")	3 - "
1/32" (1/32")	FRAME PARTITION
1/64" (1/64")	OPENING & HINGE DOOR
1/128" (1/128")	WINDERS - SHUTTERS
1/256" (1/256")	STABLE
1/512" (1/512")	WOODEN 1 1/2 STORY
1/1024" (1/1024")	11 & 13 ft
1/2048" (1/2048")	21 & 4 ft
1/4096" (1/4096")	12 ft 6 in. YELLOW FRAME
1/8192" (1/8192")	12 ft 6 in. BRICK
1/16384" (1/16384")	12 ft 6 in. STONE
1/32768" (1/32768")	12 ft 6 in. IRON
1/65536" (1/65536")	12 ft 6 in. ADON
1/131072" (1/131072")	12 ft 6 in. SPECIALS
1/262144" (1/262144")	12 ft 6 in. INDICATE RELATIVE HEIGHTS
1/524288" (1/524288")	12 ft 6 in. INDICATE STREET HOUSING ACTUAL OBSERVATION
1/1048576" (1/1048576")	12 ft 6 in. INDICATE STREET HOUSING ARBITRARY
1/2097152" (1/2097152")	12 ft 6 in. BROKEN LINE (AS BLDG. OR CONCRETE)
1/4194304" (1/4194304")	12 ft 6 in. SOLID
1/8388608" (1/8388608")	12 ft 6 in. METAL



INDEX.

STREETS.

Bank near Second..... 7	Bine Run Pike..... 9	Boone..... 3	Bridge..... 3	Cherry Alley..... 3	Commerce..... 1-28	Court..... 3	Fleming Pike, near Wood St..... 6	Fourth..... Patton Alley to Vine St..... 8	Front..... Lower to Wall..... 2	Grant, near Limestone St..... 5	Grant, near Wood..... 6	January..... 6	Lee..... 6	Lexington..... 1-45 2-34					
Limestone..... Front to Third..... 4 Third to Sixth..... 5 Third to Sixth..... 6	Maddox Alley..... M	Market..... Front to Third..... 4	Mulberry Alley..... 3	Patton Alley, West side..... 4 East..... 4 East side..... 4 West..... 4 Walnut..... 1-42	Patton Alley to Vine St..... 4 Vine to Wood..... 5 Lexington to Union..... 6 Union..... 3 Vine Alley..... 3 Street, East side..... 3 West..... 3 Wall, East side..... 3 West..... 3 Walnut..... 1-42

SPECIALS.

Central Hotel..... 4	Presbyt. Church..... 6	Christian Church..... 8	Citizen's Gas Co..... 9	Collins, Rudy & Co, Saw & Planing Mills, Cooper, N. Tobacco & Grain Warehouse, Copper's Hall..... 3	Court House & Jail..... 2	Cox Building, 2nd St..... 3	Row..... 3	Culbertson, M. Livery..... 3	Danlton, M. Livery..... 3	Dodson, J. H., Grain Warehouse..... 3	Dietrich, F., & Son, Carriage Works..... 4	Episcopal Church..... E	First Baptist Church..... F Presbyt..... 5	Foster & Carr, Flour Mills..... 3	Frazier, J. M., & Co, Warehouse..... 4	German Church..... G	Germania Hotel..... 3	Hall, J. H., Plow Co..... H	Hayes' Female Seminary..... 4	Hochinger, Thomas & Co, Warehouses..... 9	Heiser's Hotel..... 4 Pines, E. O., Tobacco Warehouse..... 3 Payne Bros., Distillery..... 9 Rogers Bros..... 3 Raina, J. H., & Co, Grain Warehouse..... 3 Rinnisland, Z., Bottling Works..... 5 Robinson & Co, Flour Mills..... 6 Rogers, J. H., Distillery..... 9 Leach & Chenoweth, Ice Factory..... 3 Limestone Mills..... 7 Magnolia Flour Mills..... M Masonic Temple..... 4 Mathews, W. B., & Co, Saw & Plan'g Mills..... 5 Tobacco Warehouse..... 7 Maysville Artificial Ice Co..... 3 Canton Mills..... 2 High School..... 3 M.T. Co's Furniture Fact..... 9 Saw & Planing Mills..... 7 Soap & Candle Fact..... 3 Water Works..... 7 Methodist Episc. Church..... 3 South Church..... 3 Old Gold Mills..... 6 Parker, O., & Co, Warehouses..... 4 Pearce Bros., Flour Mills..... 7 Piles, E. O., Tobacco Warehouse..... 3 Payne Bros., Distillery..... 9 Raina, J. H., & Co, Grain Warehouse..... 3 Rinnisland, Z., Bottling Works..... 5 Robinson & Co, Flour Mills..... 6 Rogers, J. H., Distillery..... 9 St. Charles Hotel..... S Schatzmann..... 4 Smith, J., Soap & Candle Fact..... 3 Spahr, A. C., & Co, Brick Kilns..... 8 Star Bottling Works..... 5 Wallingford, J., Warehouses..... 4 Washington Opera House..... 3 Wells Coal & Salt Elevator Co..... 4 T. Grain Warehouse..... 3 White Block..... 3 Worman, W., Coal Yard..... 2 Yancey & Alexander, Livery..... 4 Zweigart, C. F., Slaughter House..... 2 C. W., Tobacco Warehouse..... 2
----------------------	------------------------	-------------------------	-------------------------	---	---------------------------	-----------------------------	------------	------------------------------	---------------------------	---------------------------------------	--	-------------------------	-----------------------------	----------------------	-----------------------------------	--	----------------------	-----------------------	-----------------------------	-------------------------------	---	-----------------------	--	--------------------------------------	--------------------------	--	---	---	--	---	------------------------------	-----------------------------------	-----------------------------	---	--------------------------------	--	---------------------------	--------------------------	---------------------------------------	----------------------------------	---------------------------------	--------------------------	--------------------------------------	---------------------------	-----------------------------	---	--	--	--------------------------------------	--	---	---	--	--------------------------------	-------------------------	--	--	----------------------------------	--	-------------------------------------	--	---------------------------------	--------------------------	------------------------------------	---	---	---------------------------------------

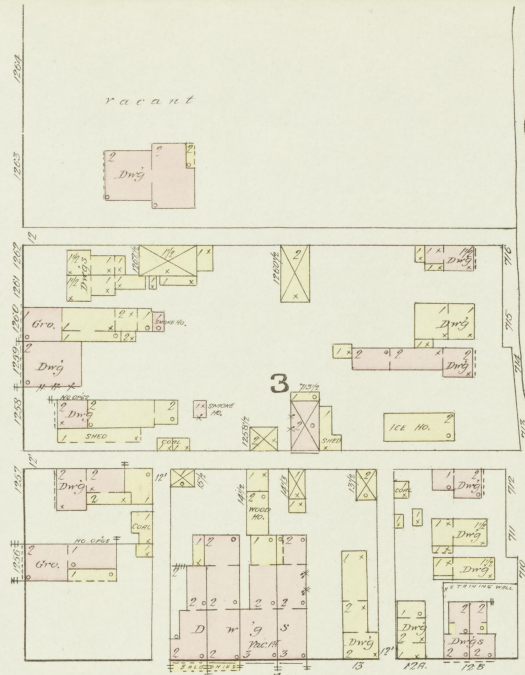
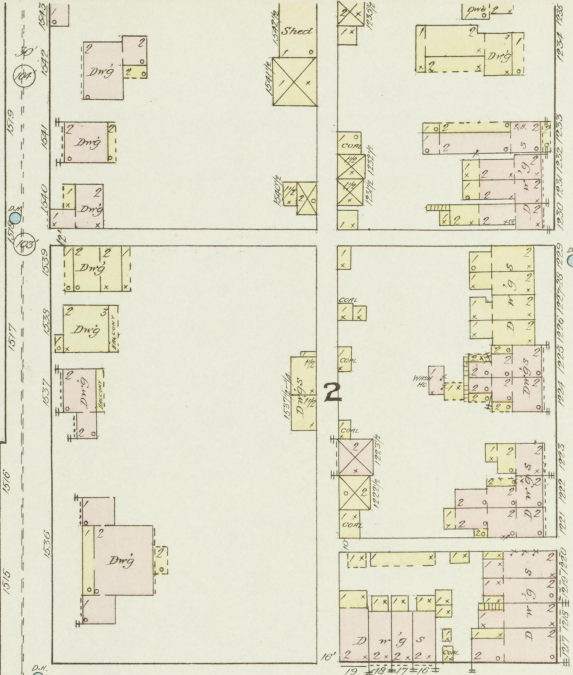
* Indicates only one side of Street shown.

Library of Congress

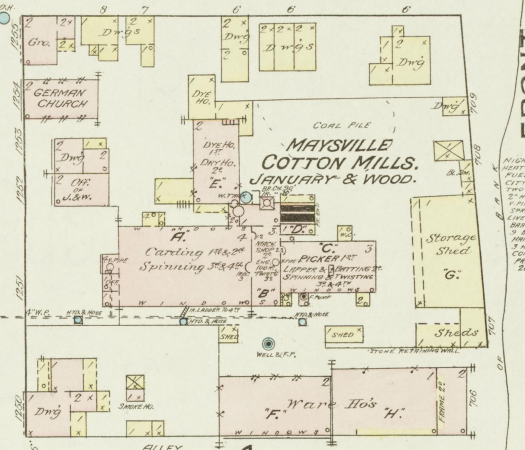
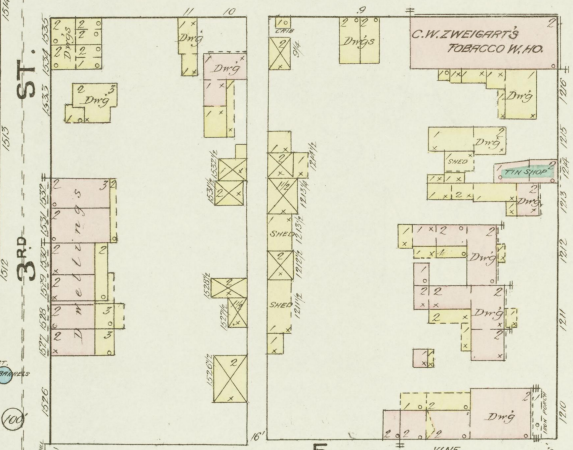
Vacant Hill Side

R I V E R

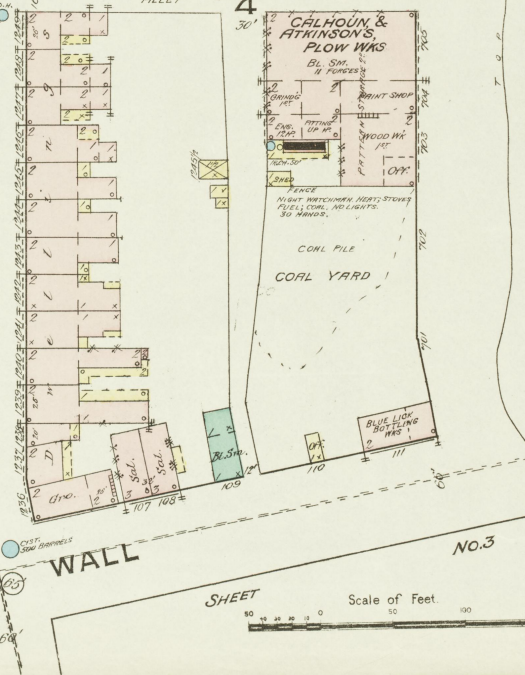
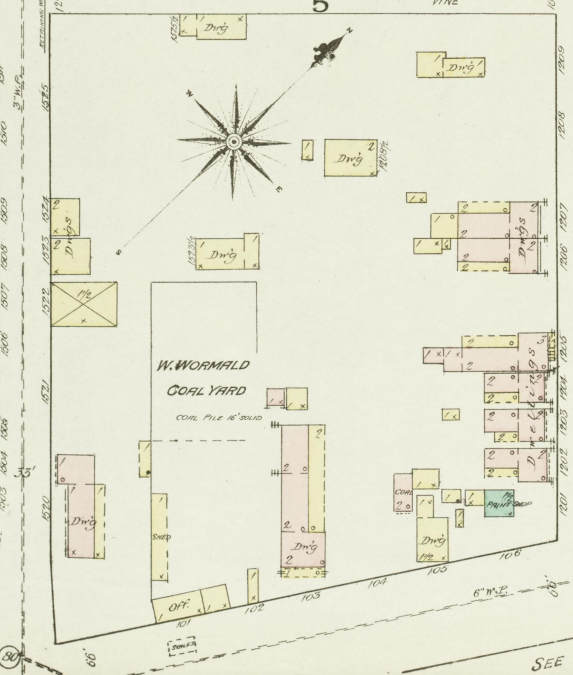
O H I O



SHORT



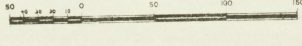
NIGHT WORKMEN & BLUE CLOCK
 NIGHT, EXHAUST STEAM
 PILE, COAL, SHEDS, ETC.
 CITY WATER AT 100 FT.
 100 FT. 4-1/2 IN. DIA. & 30
 2" WIDE AT 100 FT. DIA.
 100 FT. DIA. 100 FT. DIA.
 LIVE STEAM PIPE
 SHEDS, WAREHOUSE, ETC.
 5 BRICKS & CHIMNEY EXITS
 100 FT. DIA. 100 FT. DIA.
 3 WINDS & WINDS IN VARIOUS OF THE
 CONNECTED WITH WATER PIPE
 PRESSURE 100 LB.
 500 WINDS PROTECTED.



WALL

SHEET

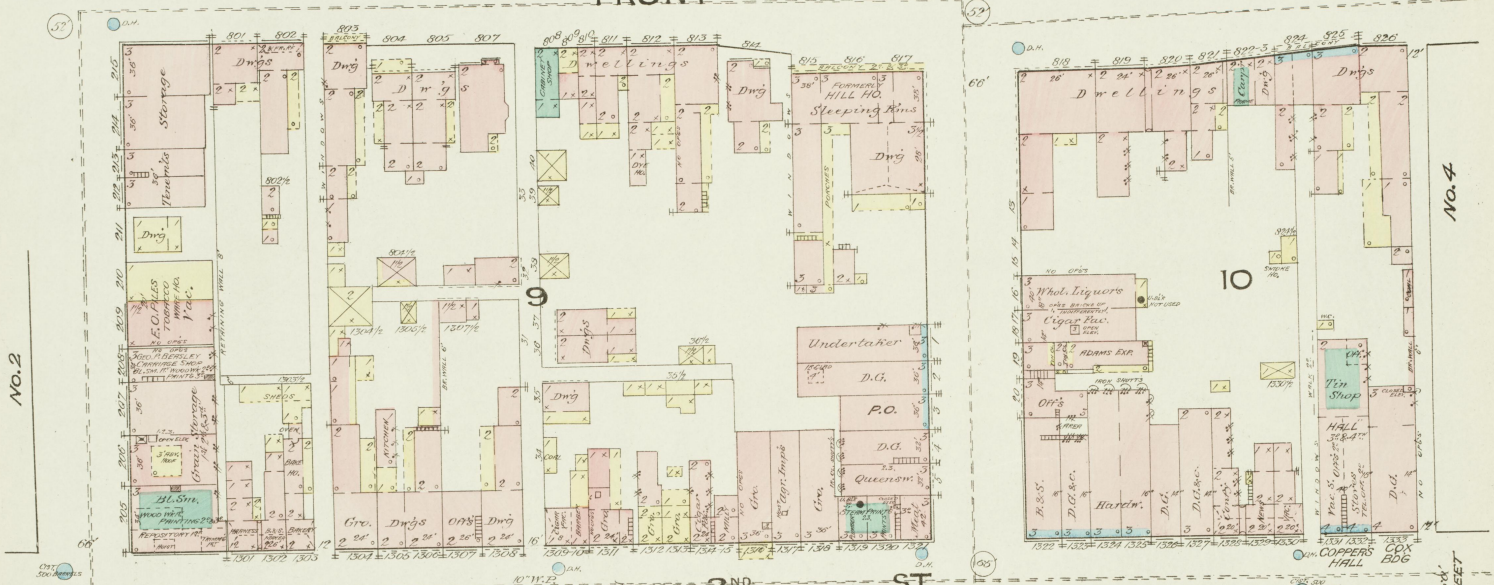
Scale of Feet



SEE

FRONT

0" N.P.



No. 2

No. 4

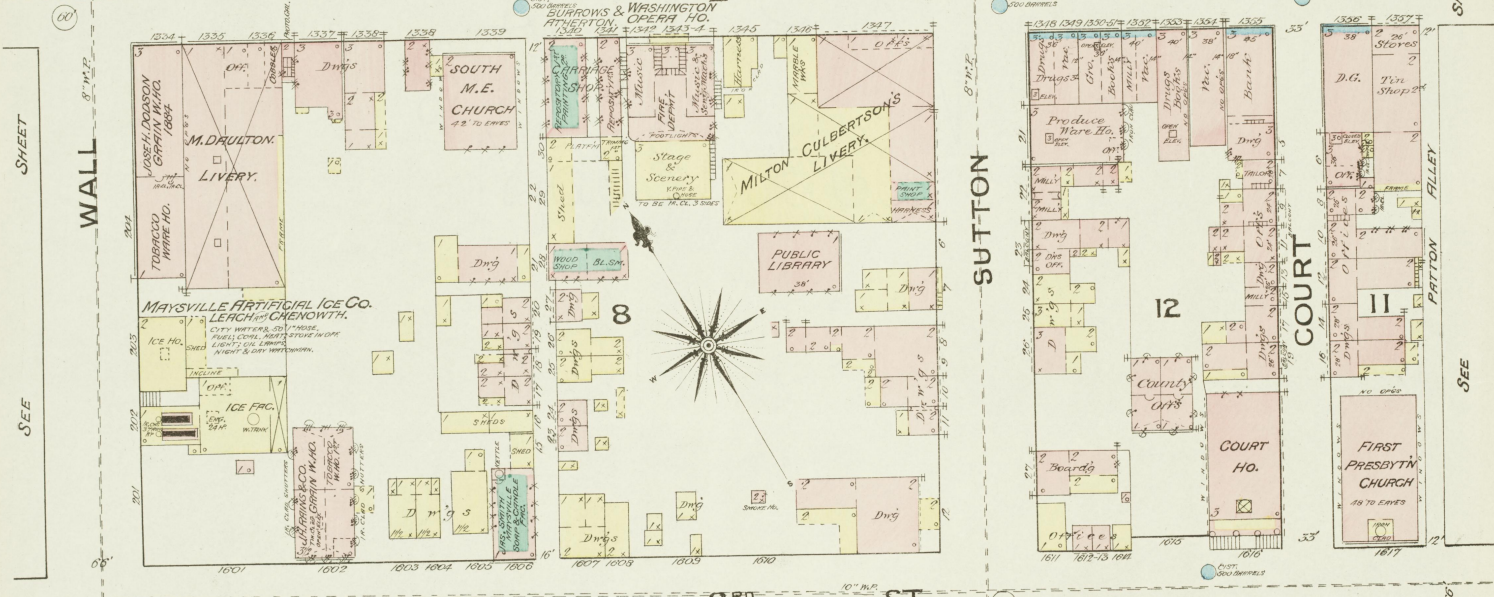
SEE SHEET

WALL

SEE

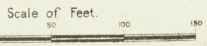
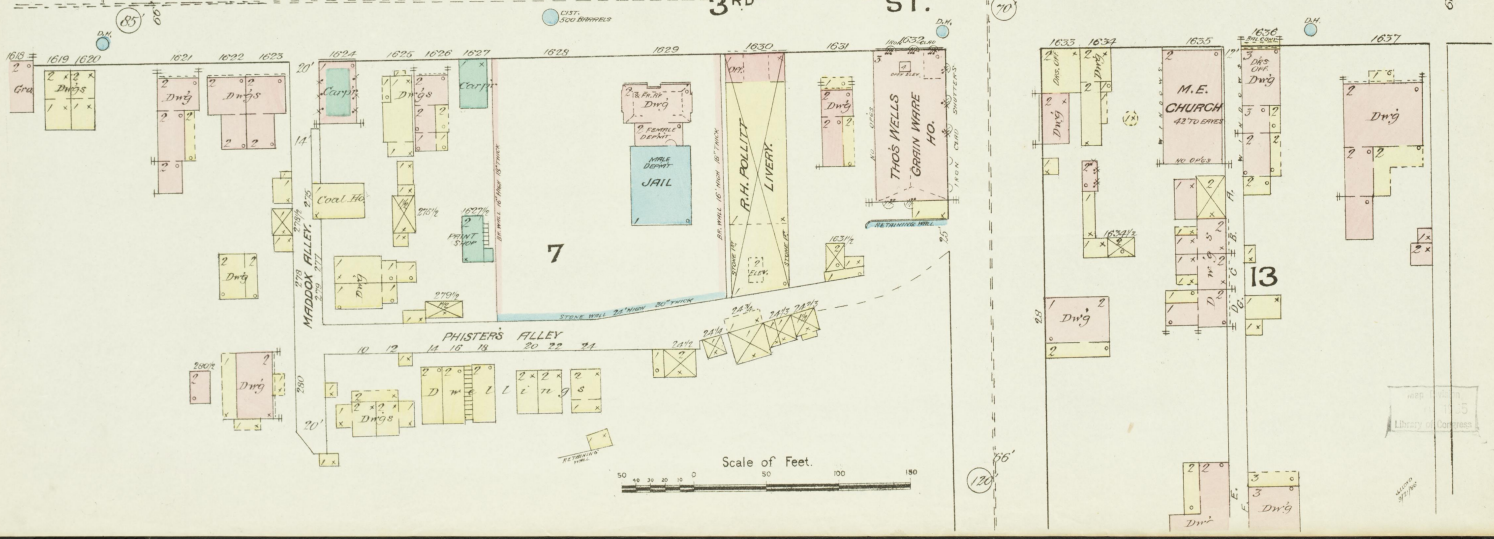
2ND ST.

ST.



3RD ST.

ST.

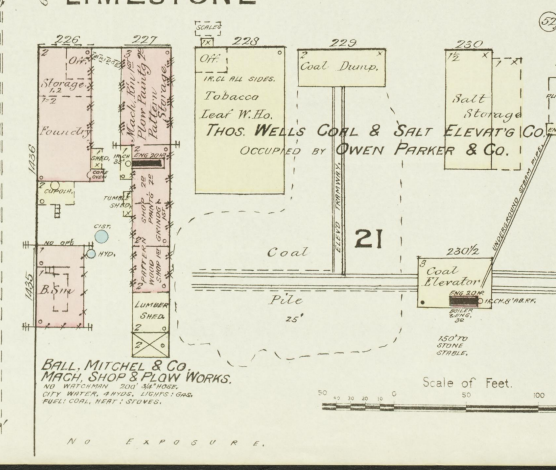
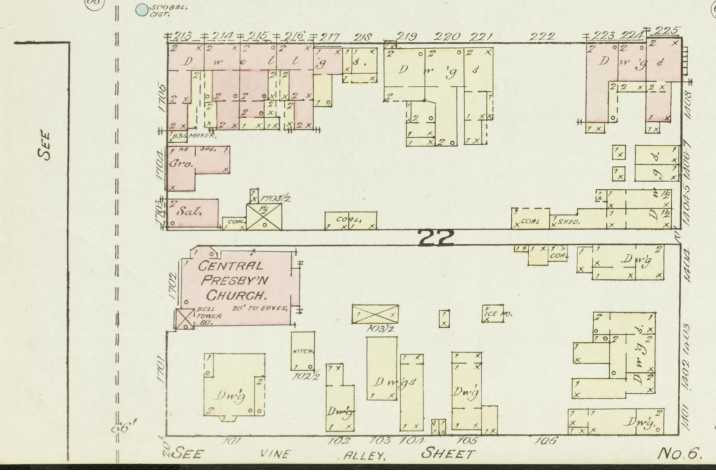
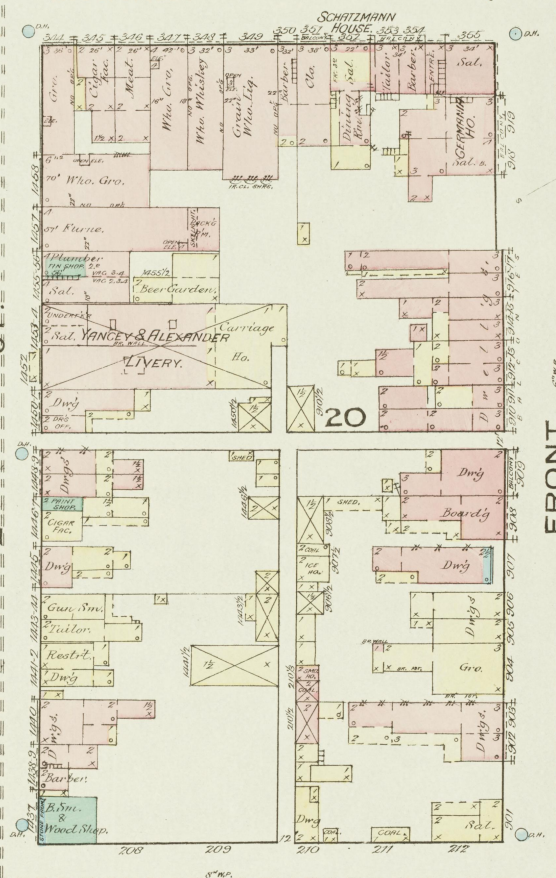
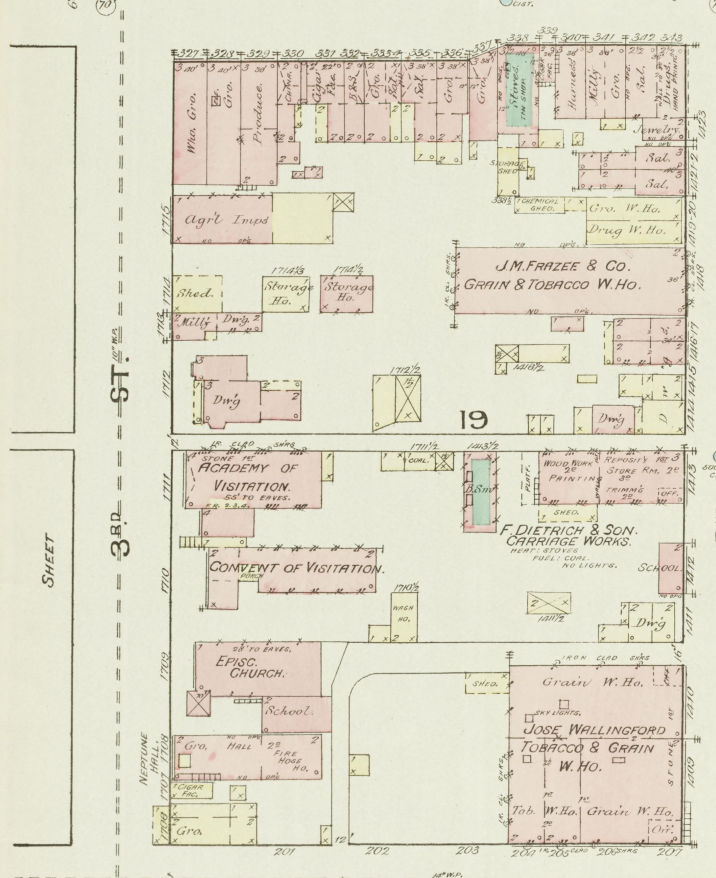
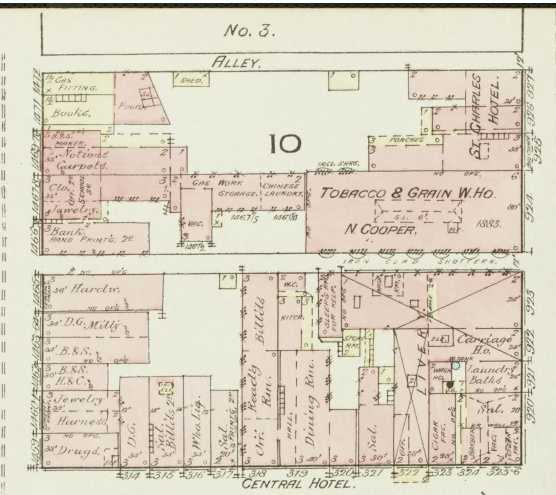
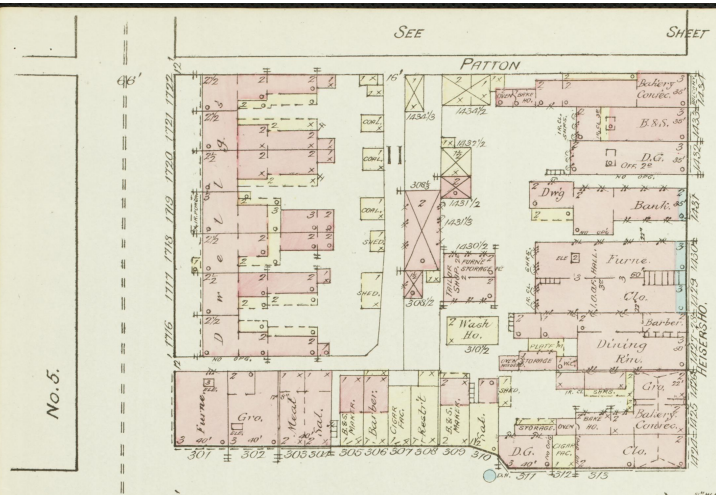


SEE SHEET

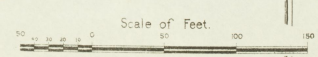
WALL

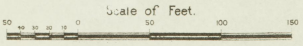
SEE SHEET

No. 4

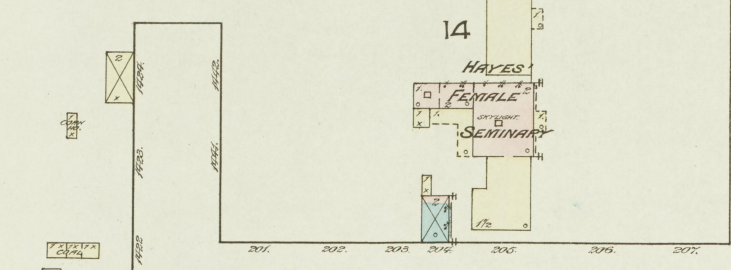
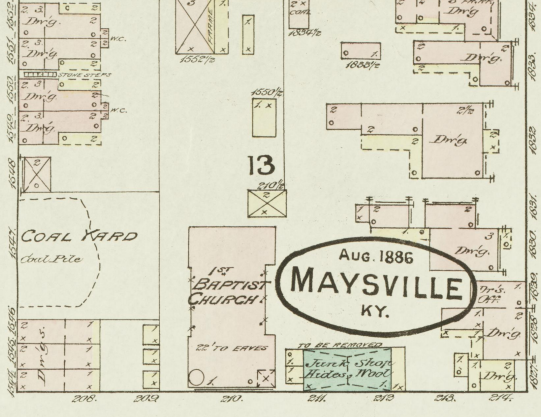


O r i o
R i e r

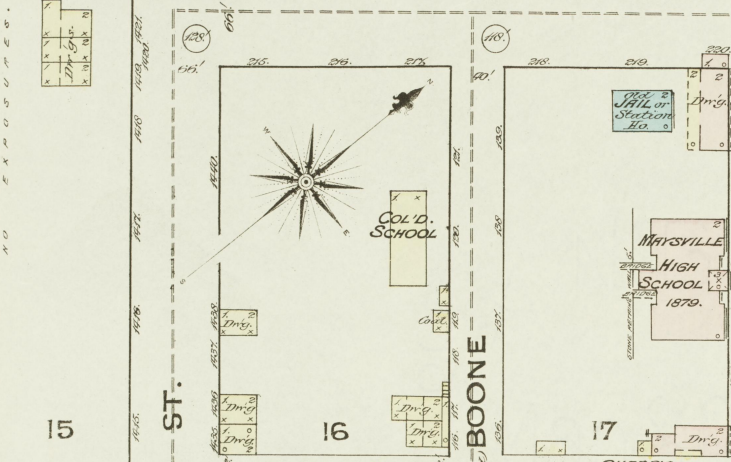
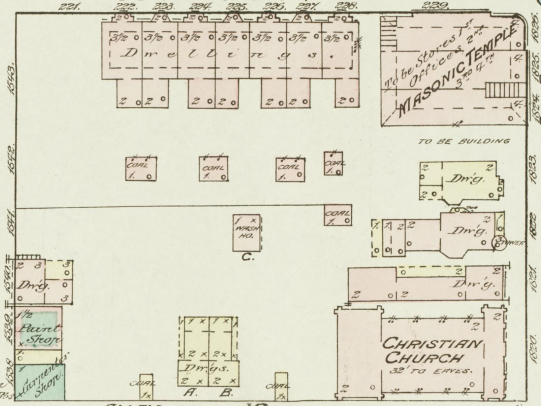




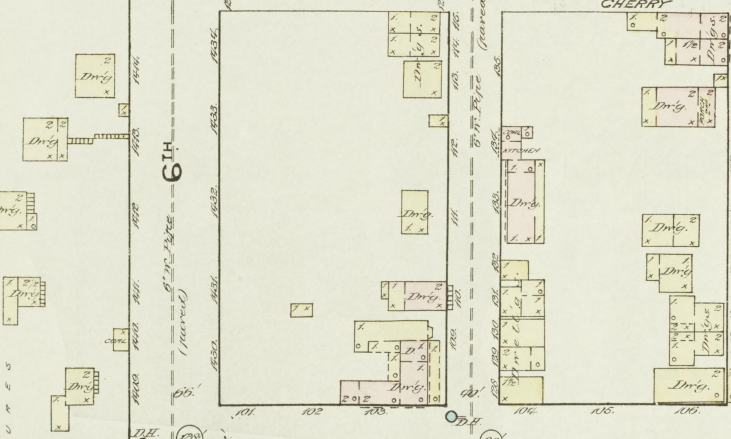
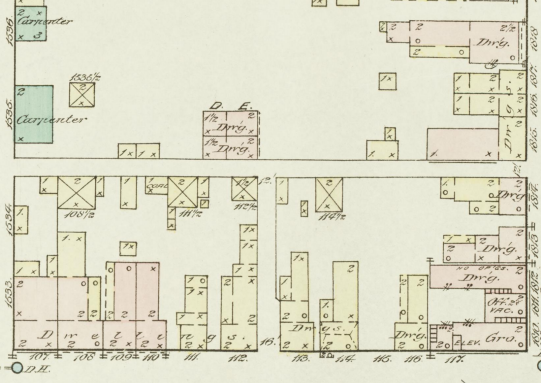
SEE SHEET N93.



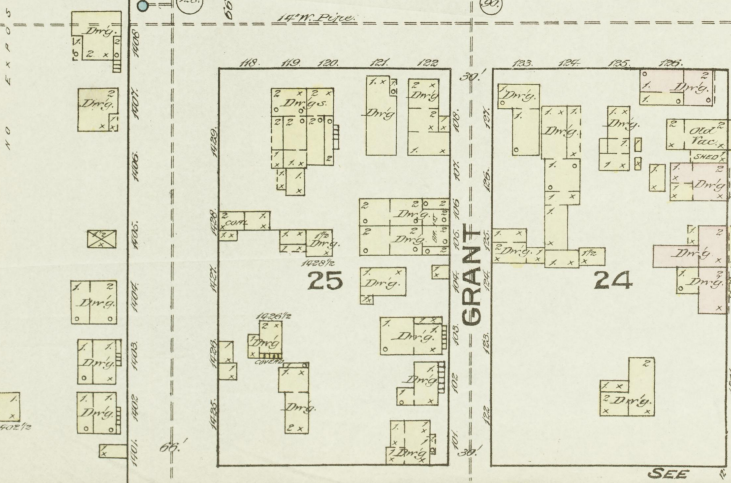
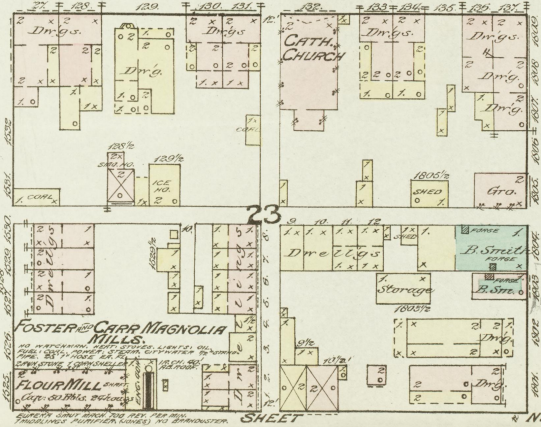
MARKET (reared)



ALLEY



LIMESTONE (reared)



SEE SHEET N94.

ST. (reared)

ST. (reared)

SEE SHEET N96.

NO EXPOSURES.

NO EXPOSURES.

WHITE

SEE

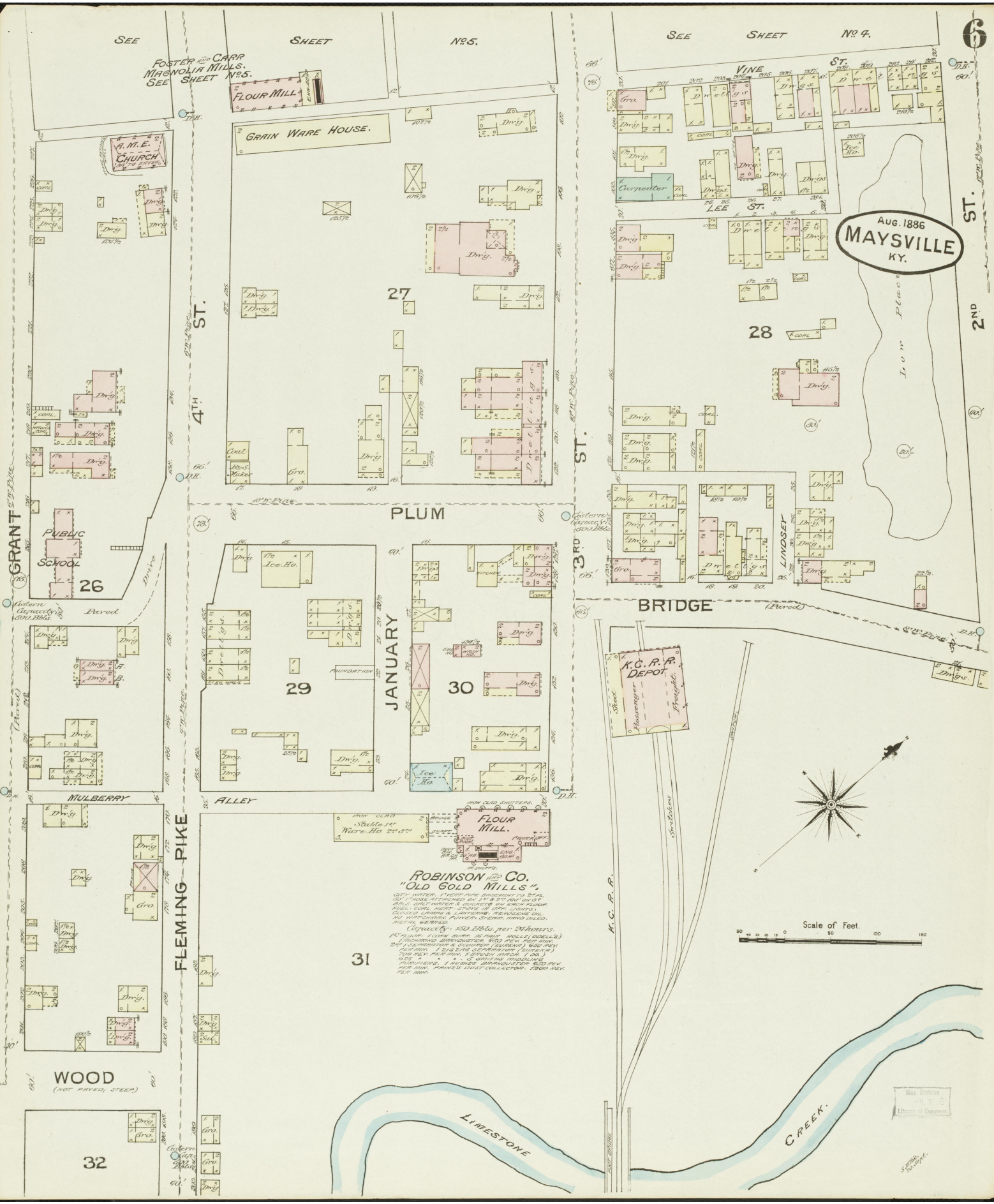
SEE

SEE

SEE

FOSTER AND CARR
MAGNOLIA MILLS.
SEE SHEET N^o 5.

Aug. 1886
MAYSVILLE
KY.



GRANT ST. PLACE

4TH ST.

FLEMING PIKE

PLUM

JANUARY

3RD ST.

3RD ST.

BRIDGE

K. C. R. R. DEPOT

K. C. R. R.

FLOUR MILL

ROBINSON AND CO. "OLD GOLD MILLS"

CITY WATER, FRESH AIR, BANGSING CO. OF ST. L.
CITY WATER SUPPLY IN THE CITY OF ST. L. MO.
WAS SOFT WATER & SUICIDE IN EACH FLOOR.
FLOOR CURBS, MOIST STEPS IN EACH CORNER.
CLOSED LAMPS & LAMPERS, PENSIONS ON
AND PROFESSIONAL PLUMBER, STEAM, WIND, OIL,
METH. REPAIRS.
ELECTRICITY, GAS, LUMPS, NEW, REPAIRERS.
WATER, STEAM, LUMPS, IN PAIR, WOLLS, GOELS,
ELECTRICIAN, BANGSING CO. ST. L. MO.
24 1/2 INCHES DIAMETER & EQUIPMENT (SUNDRY) 650 PER
COPPER PIPE, 1/2 INCH DIAMETER (SUNDRY)
700 PER. PER DIA. 1 1/2 INCH (METH. LUMPS)
425 * * * 1 1/2 INCH DIAMETER
PLUMBERS, 1 AINER, BANGSING CO. ST. L.
PER DIA. 1 1/2 INCH, 1 1/2 INCH, 1 1/2 INCH, 1 1/2 INCH,
PER DIA.

31

29

30

26

27

28

32

GRAIN WARE HOUSE.

FLOUR MILL

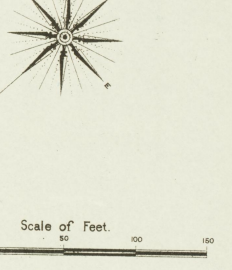
A. M. E. CHURCH

PUBLIC SCHOOL

VINE ST.

Aug. 1886
MAYSVILLE
KY.

2ND ST.



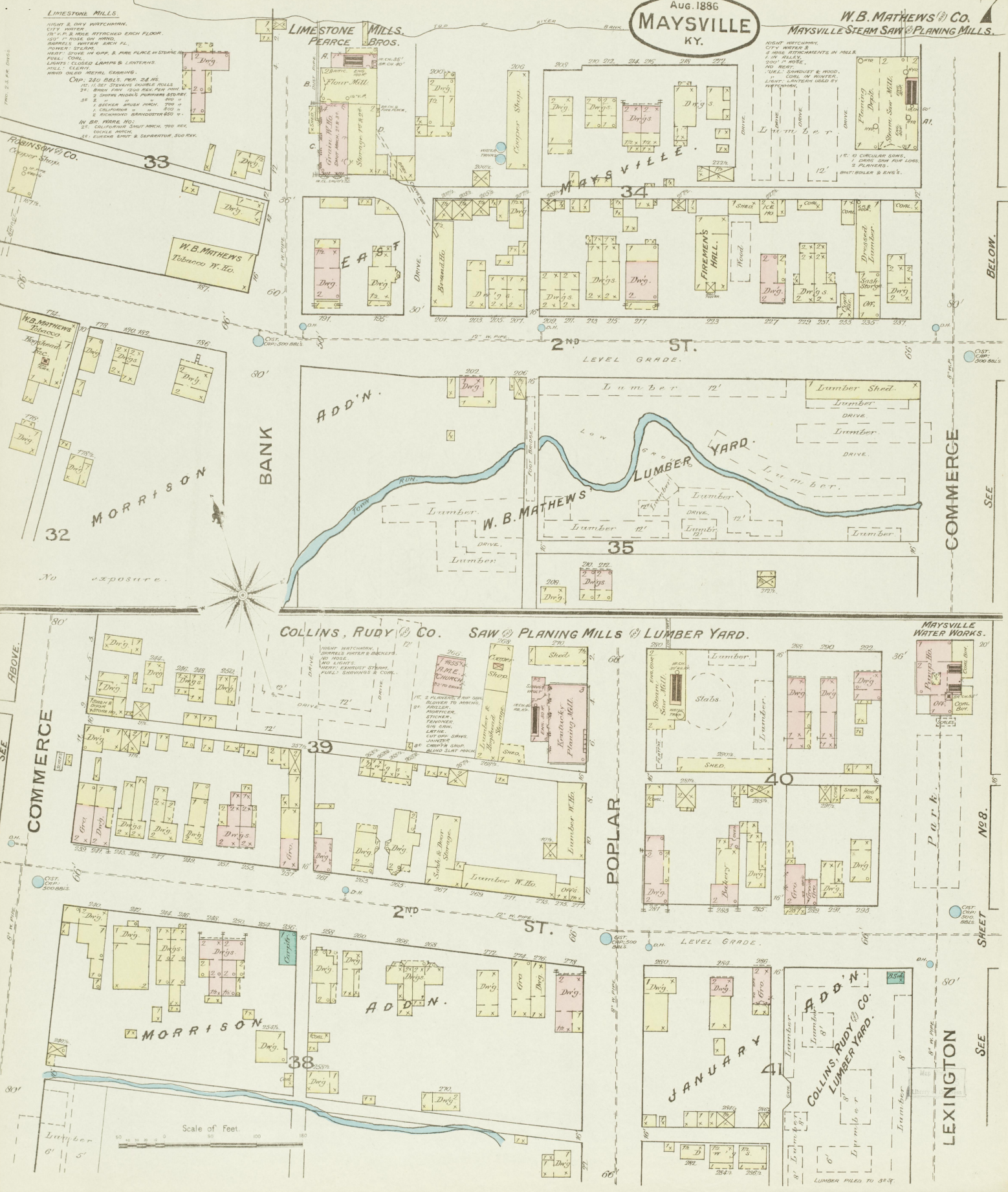
Scale of Feet.

Map Edition
J. T. S.
J. T. S. & Co. of Cincinnati

Aug. 1886

MAYSVILLE KY.

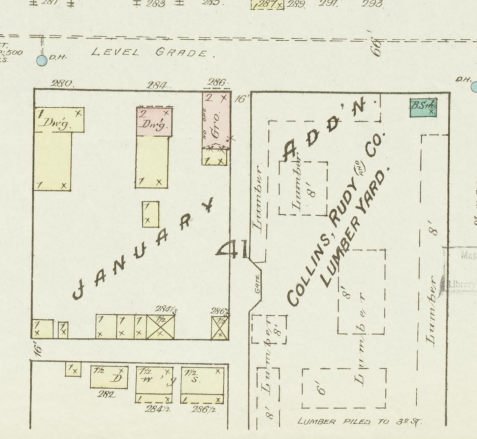
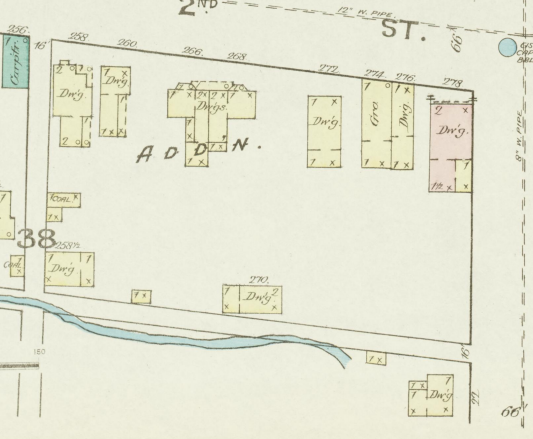
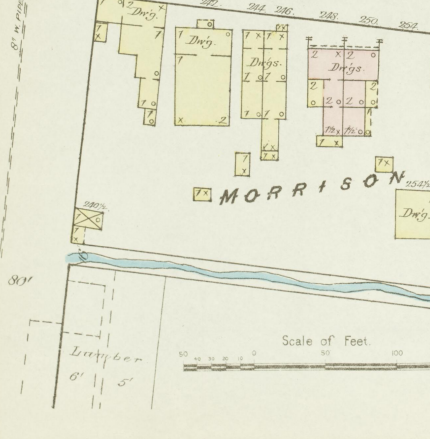
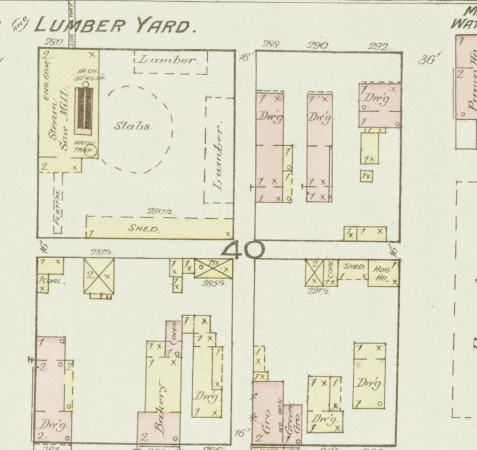
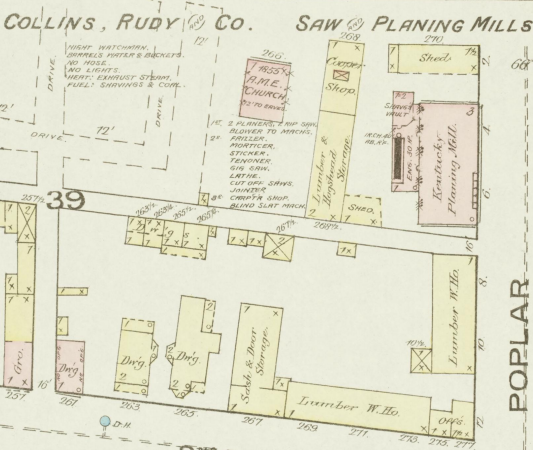
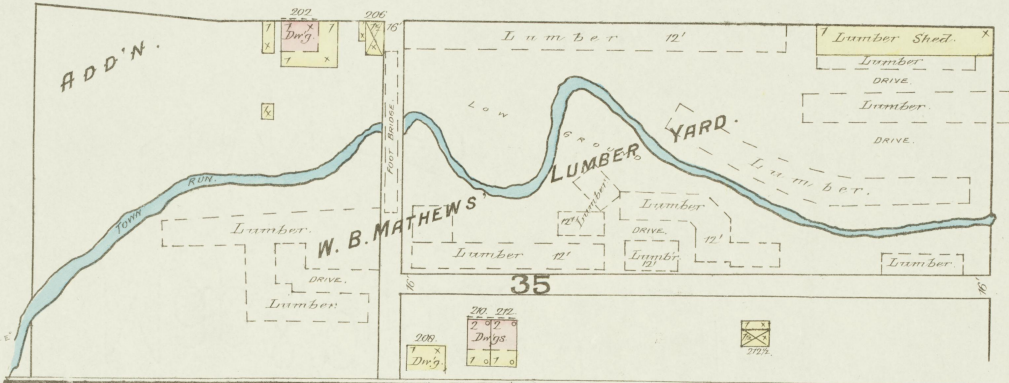
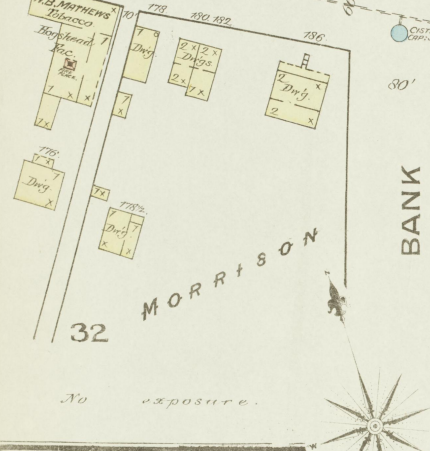
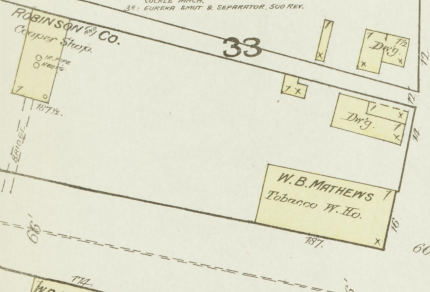
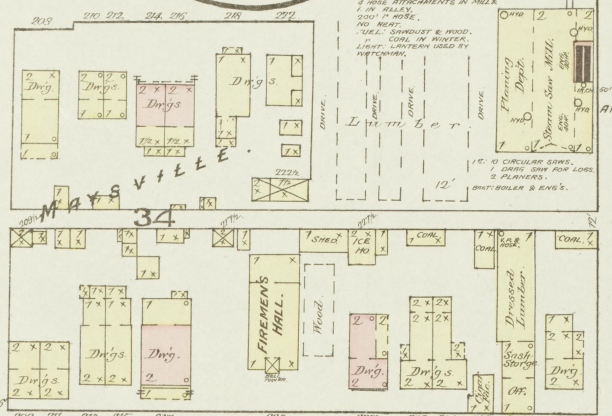
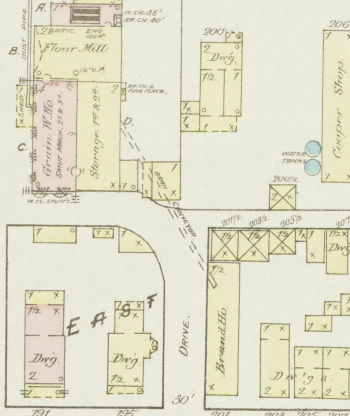
W.B. MATHEWS & CO. MAYSVILLE STEAM SAW & PLANING MILLS.



LIMESTONE MILLS.
 NIGHT & DAY WATCHMAN.
 CITY WATER.
 10' x 12' & 14' HOLES ATTACHED EACH FLOOR.
 15' x 12' HOLES ON WIND.
 BARRELS WATER EACH FL.
 POWER STEAM.
 HAYT. SHIVE IN O.P.F. & FIRE PLACE IN STORAGE.
 FULL COALS.
 LIGHTS: CLOSED LAMPS & LANTERNS.
 MILL CLEAN.
 HAND OILED METAL GEARING.
 C.P.F. 250 BBL'S. PER 24 HRS.
 NO. 1 SET STEVENS DOUBLE ROLLS
 24" BENCH 1000 REEL FOR 1000
 2 SHAFER MOULD PUMPHOUSE 2500
 1 BELGER BRUSH ARCH. 700
 1 CALDWELL " " 400
 1 RICHMOND BRANDISTER 800
 IN 80' WIDE. NO.
 IN 100' CALIFORNIA SHUT ARCH. 100 REV.
 DOUBLE ARCH.
 IN EUROPE SHUT & SEPARATOR. 300 REV.

NIGHT WATCHMAN.
 CITY WATER.
 4 HOSE ATTACHMENTS IN MILLS.
 1 IN WALKY.
 500' BENCH.
 NO. 1 SHAFER & MOOD.
 NO. 1 COAL IN WINTER.
 LIGHT LANTERN USED BY WATCHMAN.
 12'
 NO. 10 CIRCULAR SAW.
 1000' SAW FOR LOSS.
 2 PLANERS.
 BUTTABLE & ENG'S.

LIMESTONE MILLS. PEARCE BROS.



Scale of Feet. 0 50 100 150

BELOW.

SEE

NO. 8.

SHEET

SEE

SEE SHEET

LEXINGTON

3RD ST.

2ND ST.

WALNUT

UNION

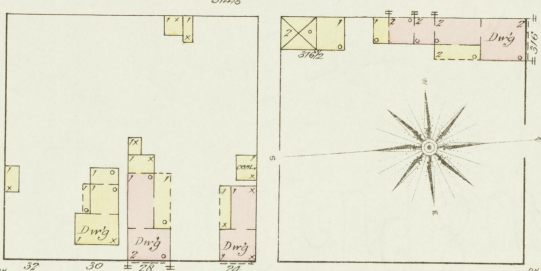
River.

FRONT

THE JAS. H. HALL PLOW CO.

RIGHT WORKING, NO CLOCK.
PAINT CORN. - HOLLOW.
HORN STOVES, 200 WINGS.
NO ROSE. - NO FIRE BRN.

300% Foundry.
CORNICE
300%
Dwg. 2
300%
Plow Storage i.s.
Stacking Plows 2E
Painty 1E
OFF.
Mach. Rm.
Wood Work 2E
R.S. STH.
Mach. Rm.
Wood Work 2E
300%
312%



47

Dwg. 1, 2, 3, 4, 5, 6, 7, 8, 9, 10, 11, 12, 13, 14, 15, 16, 17, 18, 19, 20, 21, 22, 23, 24, 25, 26, 27, 28, 29, 30, 31, 32, 33, 34, 35, 36, 37, 38, 39, 40, 41, 42, 43, 44, 45, 46, 47, 48, 49, 50, 51, 52, 53, 54, 55, 56, 57, 58, 59, 60, 61, 62, 63, 64, 65, 66, 67, 68, 69, 70, 71, 72, 73, 74, 75, 76, 77, 78, 79, 80, 81, 82, 83, 84, 85, 86, 87, 88, 89, 90, 91, 92, 93, 94, 95, 96, 97, 98, 99, 100.

Public Sq.

48

49

A.C. SPHAR & CO. BRICK KILNS.

BRICK KILN
SHEED
KILN
SHEED
KILN
SHEED
KILN
SHEED
KILN
SHEED
KILN
SHEED
KILN
SHEED
CORL PILE.

50

44

45

Dwg. 1, 2, 3, 4, 5, 6, 7, 8, 9, 10, 11, 12, 13, 14, 15, 16, 17, 18, 19, 20, 21, 22, 23, 24, 25, 26, 27, 28, 29, 30, 31, 32, 33, 34, 35, 36, 37, 38, 39, 40, 41, 42, 43, 44, 45, 46, 47, 48, 49, 50, 51, 52, 53, 54, 55, 56, 57, 58, 59, 60, 61, 62, 63, 64, 65, 66, 67, 68, 69, 70, 71, 72, 73, 74, 75, 76, 77, 78, 79, 80, 81, 82, 83, 84, 85, 86, 87, 88, 89, 90, 91, 92, 93, 94, 95, 96, 97, 98, 99, 100.

46

47

Dwg. 1, 2, 3, 4, 5, 6, 7, 8, 9, 10, 11, 12, 13, 14, 15, 16, 17, 18, 19, 20, 21, 22, 23, 24, 25, 26, 27, 28, 29, 30, 31, 32, 33, 34, 35, 36, 37, 38, 39, 40, 41, 42, 43, 44, 45, 46, 47, 48, 49, 50, 51, 52, 53, 54, 55, 56, 57, 58, 59, 60, 61, 62, 63, 64, 65, 66, 67, 68, 69, 70, 71, 72, 73, 74, 75, 76, 77, 78, 79, 80, 81, 82, 83, 84, 85, 86, 87, 88, 89, 90, 91, 92, 93, 94, 95, 96, 97, 98, 99, 100.

48

49

50

51

POTTERY.

Vac.

Dwg. 1, 2, 3, 4, 5, 6, 7, 8, 9, 10, 11, 12, 13, 14, 15, 16, 17, 18, 19, 20, 21, 22, 23, 24, 25, 26, 27, 28, 29, 30, 31, 32, 33, 34, 35, 36, 37, 38, 39, 40, 41, 42, 43, 44, 45, 46, 47, 48, 49, 50, 51, 52, 53, 54, 55, 56, 57, 58, 59, 60, 61, 62, 63, 64, 65, 66, 67, 68, 69, 70, 71, 72, 73, 74, 75, 76, 77, 78, 79, 80, 81, 82, 83, 84, 85, 86, 87, 88, 89, 90, 91, 92, 93, 94, 95, 96, 97, 98, 99, 100.

49

50

51

Dwg. 1, 2, 3, 4, 5, 6, 7, 8, 9, 10, 11, 12, 13, 14, 15, 16, 17, 18, 19, 20, 21, 22, 23, 24, 25, 26, 27, 28, 29, 30, 31, 32, 33, 34, 35, 36, 37, 38, 39, 40, 41, 42, 43, 44, 45, 46, 47, 48, 49, 50, 51, 52, 53, 54, 55, 56, 57, 58, 59, 60, 61, 62, 63, 64, 65, 66, 67, 68, 69, 70, 71, 72, 73, 74, 75, 76, 77, 78, 79, 80, 81, 82, 83, 84, 85, 86, 87, 88, 89, 90, 91, 92, 93, 94, 95, 96, 97, 98, 99, 100.

43

Dwg. 1, 2, 3, 4, 5, 6, 7, 8, 9, 10, 11, 12, 13, 14, 15, 16, 17, 18, 19, 20, 21, 22, 23, 24, 25, 26, 27, 28, 29, 30, 31, 32, 33, 34, 35, 36, 37, 38, 39, 40, 41, 42, 43, 44, 45, 46, 47, 48, 49, 50, 51, 52, 53, 54, 55, 56, 57, 58, 59, 60, 61, 62, 63, 64, 65, 66, 67, 68, 69, 70, 71, 72, 73, 74, 75, 76, 77, 78, 79, 80, 81, 82, 83, 84, 85, 86, 87, 88, 89, 90, 91, 92, 93, 94, 95, 96, 97, 98, 99, 100.

44

45

Dwg. 1, 2, 3, 4, 5, 6, 7, 8, 9, 10, 11, 12, 13, 14, 15, 16, 17, 18, 19, 20, 21, 22, 23, 24, 25, 26, 27, 28, 29, 30, 31, 32, 33, 34, 35, 36, 37, 38, 39, 40, 41, 42, 43, 44, 45, 46, 47, 48, 49, 50, 51, 52, 53, 54, 55, 56, 57, 58, 59, 60, 61, 62, 63, 64, 65, 66, 67, 68, 69, 70, 71, 72, 73, 74, 75, 76, 77, 78, 79, 80, 81, 82, 83, 84, 85, 86, 87, 88, 89, 90, 91, 92, 93, 94, 95, 96, 97, 98, 99, 100.

46

47

Dwg. 1, 2, 3, 4, 5, 6, 7, 8, 9, 10, 11, 12, 13, 14, 15, 16, 17, 18, 19, 20, 21, 22, 23, 24, 25, 26, 27, 28, 29, 30, 31, 32, 33, 34, 35, 36, 37, 38, 39, 40, 41, 42, 43, 44, 45, 46, 47, 48, 49, 50, 51, 52, 53, 54, 55, 56, 57, 58, 59, 60, 61, 62, 63, 64, 65, 66, 67, 68, 69, 70, 71, 72, 73, 74, 75, 76, 77, 78, 79, 80, 81, 82, 83, 84, 85, 86, 87, 88, 89, 90, 91, 92, 93, 94, 95, 96, 97, 98, 99, 100.

48

49

50

Dwg. 1, 2, 3, 4, 5, 6, 7, 8, 9, 10, 11, 12, 13, 14, 15, 16, 17, 18, 19, 20, 21, 22, 23, 24, 25, 26, 27, 28, 29, 30, 31, 32, 33, 34, 35, 36, 37, 38, 39, 40, 41, 42, 43, 44, 45, 46, 47, 48, 49, 50, 51, 52, 53, 54, 55, 56, 57, 58, 59, 60, 61, 62, 63, 64, 65, 66, 67, 68, 69, 70, 71, 72, 73, 74, 75, 76, 77, 78, 79, 80, 81, 82, 83, 84, 85, 86, 87, 88, 89, 90, 91, 92, 93, 94, 95, 96, 97, 98, 99, 100.

49

50

51

Dwg. 1, 2, 3, 4, 5, 6, 7, 8, 9, 10, 11, 12, 13, 14, 15, 16, 17, 18, 19, 20, 21, 22, 23, 24, 25, 26, 27, 28, 29, 30, 31, 32, 33, 34, 35, 36, 37, 38, 39, 40, 41, 42, 43, 44, 45, 46, 47, 48, 49, 50, 51, 52, 53, 54, 55, 56, 57, 58, 59, 60, 61, 62, 63, 64, 65, 66, 67, 68, 69, 70, 71, 72, 73, 74, 75, 76, 77, 78, 79, 80, 81, 82, 83, 84, 85, 86, 87, 88, 89, 90, 91, 92, 93, 94, 95, 96, 97, 98, 99, 100.

Scale of Feet

Aug. 1886
MAYSVILLE
KY.

C. F. ZWEIFART'S
SLAUGHTER HO. &
SAUSAGE FAC.

CITY WATER.
100' H. HOSE.
PUMPS! STEAM.
PANEL! COAL.

Detached 1/2 Miles N.W. of
Post Office.

Tobacco W. Ho.

HECHINGER, THOMAS & CO.
Grain W. Ho.
Grain Storage.

Coal Shed.
CITIZENS GAS CO.
IRON GAS HOLDER.

MAYSVILLE MFG CO.
FURNITURE FAC.

Furniture Fac.
Storage
Carpenter

Map Division
1886

J. H. ROGERS.
REG. DISTILLERY No. 24.
7th DIST. MASON CO. KY.

Distillery
Cattle Sheds
Private Alley
Detached 2 1/2 Miles N.W. of P.O.

H. E. POGUE.
REG. DISTILLERY No. 3.
7th DIST. MASON CO. KY.

Distillery
Bonded W. Ho.
Detached 1/2 Miles N.W. of P.O.

Storage W. Ho.

Drig.

Drig.
Bonded W. Ho.
Detached 1/2 Miles N.W. of Court Ho.

POYNTZ BROS.
REG. DISTILLERY No. 6.
7th DIST. MASON CO. KY.

Distillery
Detached 1/2 Miles N.W. of Court Ho.

BLUE RUN PIKE

35'

32'

30'

30'

30'

30'

30'

30'

40'

40'

Scale of Feet
0 10 20 30 40 50 60 70 80 90 100 110 120 130 140 150

Exposure.

No.

H. I. S. I. D. E.

Exposure.

No.

C. E. C. M. R.

500' TO RIVER.

Detached 1/2 Miles N.W. of Court Ho.

Exposure.

No.

Exposure.

No.

Ohio River

Ohio River

NO WATCHMAN.
NO LIGHTS.
25' H. HOSE & 100' H. HOSE.
CITY WATER.
HEAT! EXHAUST STEAM.
FUEL! COAL & SHIPPINGS.
10 PUMPS.
WHEELS.
COP. SAYS.
LUT. TANKS.
22 CRILLER.
STICKER.
TENDERS.
WHEELS.
WOOD PORTER.
SANDS.
400' SHIPPER ARCH.
40' SAW.
LATH.