

571 2861 25 17680



**TIMBER**  
Timber on the National Forests in Alabama contributes to the beauty and economy of the areas. Timber harvesting is a part of a scientific management program for the National Forests and is necessary to insure productive and managed forests. Pulwood is provided to meet pulp and paper needs and lumber from the forests is used to build homes. Residue wood is used as firewood. These same forests protect watersheds, provide homes for wildlife, and give variety to the landscape.

**RANGE**  
About 300 cattle graze the Conecuh National Forest. Under this range program, local livestock producers pay for the privilege of grazing their animals on National Forest lands according to Forest Service management plans. Annual burning associated with the range improvement program increases the flavor and nutrient content of forage supplies, benefits wildlife programs, and lessens wildfire hazards.

**ADDRESSES**

Forest Supervisor  
National Forests in Alabama  
1765 Highland Avenue  
Montgomery, AL 36107

**BANKHEAD NATIONAL FOREST**  
District Ranger  
P.O. Box 278  
Double Springs, AL 36553

District Ranger  
Box 339, Highway 195 E.  
Hayleyville, AL 35565

**CONECUH NATIONAL FOREST**  
District Ranger  
Box 310, 1100 S. 3 Notch St.  
Andalusia, AL 36420

**TALLADEGA NATIONAL FOREST**  
District Ranger  
Box 67, 152 4th Ave. S.  
Centreville, AL 35042

District Ranger  
450 Highway 66  
Heflin, AL 36264

District Ranger  
1001 North Street  
Talladega, AL 35160

**TUSKEGEE NATIONAL FOREST**  
District Ranger  
Rt. 1, Box 204AA  
Tuskegee, AL 36083



**WILDLIFE**  
Nearly 900 species of birds, mammals, reptiles, amphibians, and fishes inhabit the National Forests of Alabama, either as residents or seasonal migrants. Game animals include white-tailed deer, bobwhite, quails, gray and fox squirrels, turkey, rabbits, opossums, and various waterfowl. Threatened or endangered species include the red-cockaded woodpecker, the bald eagle and the alligator. The Game and Fish Division of the Alabama Department of Conservation and Natural Resources cooperates in the management and protection of wildlife. Five wildlife management areas are operated on the National Forests of Alabama by the Department of Conservation. Hunting and fishing are main attractions of the National Forests.

Guide to the  
**National Forests in Alabama**

Alabama's four national forests are part of the 190 National Forests, National Grasslands, and Land Utilization Projects totaling 195 million acres in 44 states, Puerto Rico and the Virgin Islands. Alabama's National Forests date back to the early 1900's and contain over 640,000 acres of public land.

The National Forests in Alabama are administered by a Forest Supervisor and seven District Rangers. Additional information can be obtained by contacting any of these offices.

**RECREATION**

The National Forests in Alabama offer an assortment of recreation experiences for the many who visit each year. Among the activities available are picnicking, camping, sightseeing, hiking, hunting, swimming, fishing, and boating. Visitors can find their place whether it be in developed recreation areas or a quiet spot away from everything.

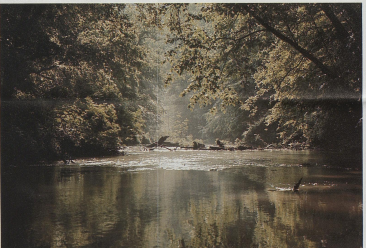
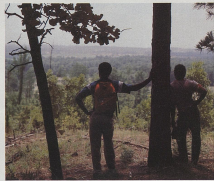
For hikers, the Pinhook Trails System in the Talladega, the Conecuh Trail in the Conecuh, and Bartram Trail in the Tuskegee provide over 100 miles of developed trails. Additionally, old logging or timber access roads provide excellent ways for hikers.

With few exceptions, camping is permitted in the general forest area except during hunting season when restricted to designated areas.



**WILDERNESS**

Sipsey Wilderness is the only area in the Wilderness Preservation System in Alabama. While the 12,726 acre area in the Bankhead National Forest has only a few scattered patches of virgin timberland, much of the second-growth forest is made up of stands of large and imposing trees, and the area has remained undisturbed for many years. Hikers and canoeists can find there the challenge and solitude that is a vital part of the true wilderness experience.

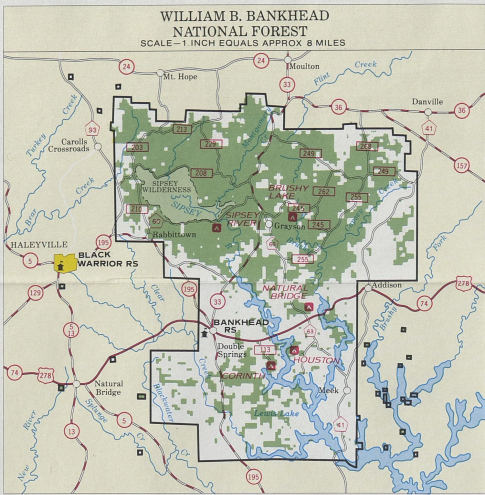


**WATER**  
Watershed management is one of the most important parts of the Forest Service job. The National Forests in Alabama provide municipal watersheds for seven cities serving approximately 276,000 people.

**OTHER USES**  
Other uses allowed under permit on the National Forests include bee yards, power and transmission lines, pipelines, roads, and highways. Each use is carefully considered and must be compatible with the uses for which the National Forests were established.



MAP DEPT.  
SEP 1982  
University of Ky Library



#### BANKHEAD NATIONAL FOREST

**Brushy Lake (B-1)**—Take Alabama 33 south from Moulton for 15 miles; turn south on County Road 63 for ½ mile; then turn left (east) on Forest Service Road 245 (Mt. Olive Road) for 5 miles.

**Corinth (B-2)**—Take U.S. 278 east from Double Springs for 4 miles; then turn right (south) for 3 miles on Forest Service Road 113.

**Houston (B-2)**—Take U.S. 278 east from Double Springs for 10 miles; then south on County Road 63 for two miles; then SW on County Road 64 for two miles; then west on Forest Service Road 118 for one mile.

**Natural Bridge (B-1)**—Take U.S. 278 east from Double Springs for 10 miles; then turn left (north) on County 63 for one mile.

**Sipsey River (B-1)**—Take Alabama 195 northeast from Haleyville for 8½ miles; then turn left (north) on County Road 23 (Kinlock Road) for 1½ miles; then east on Cranal Road for 6 miles.

#### CONECUH NATIONAL FOREST

**Blue Pond (D-7)**—Take U.S. 29 southwest from Andalusia for 10 miles; then turn left (south) on Alabama 137 for 4 miles; then left (east) on Forest Service Road 547 for 1 mile.

**Open Pond (D-8)**—Take U.S. 29 southwest from Andalusia for 10 miles; then turn left (south) on Alabama 137 for 5 miles; then left (east) on County Road 24 for ½ mile; then right (southeast) on Forest Service Road 336 for 1 mile.

#### TALLADEGA NATIONAL FOREST

**Coleman Lake (F-3)**—Take U.S. 78 northeast from Heflin for 6 miles; turn left (northwest) on Forest Service Road 553 for 8½ miles; then right (north) on Forest Service Road 500-4 for 1½ miles to Lake.

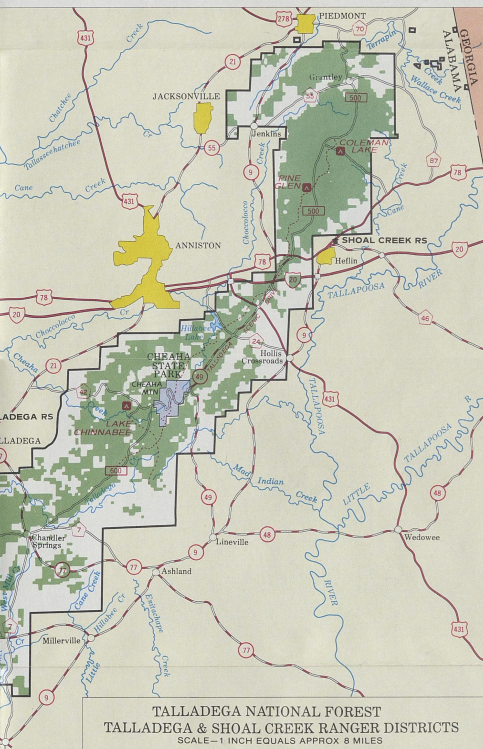
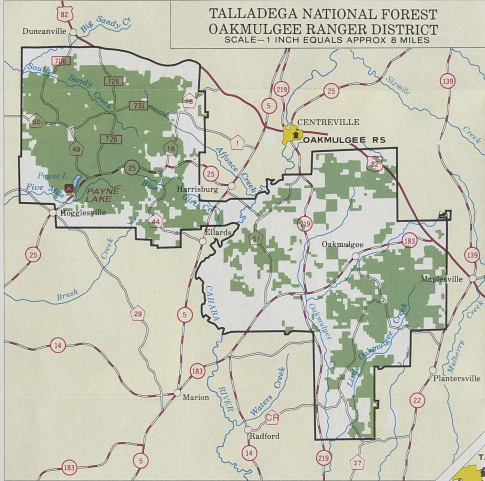
**Lake Chinnabee (D-5)**—Take Alabama 21 northeast from Talladega for 7 miles; turn right (east) on County Road 96 for 12 miles; take entrance road (Forest Service Road 646) 2 miles to Lake.

**Pine Glen (E-4)**—Take U.S. 78 west from Heflin for 2½ miles; then turn right (north) for 8 miles on Forest Service Road 500.

**Payne Lake (A-3)**—Take U.S. 82 west from Centreville for 2 miles; then south on Alabama 5 for 6 miles; then west on Alabama 25 for 15 miles.

#### TUSKEGEE NATIONAL FOREST

**Taska (E-8)**—On U.S. 80, 5½ miles east of Tuskegee.

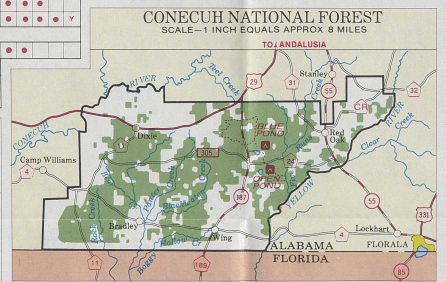
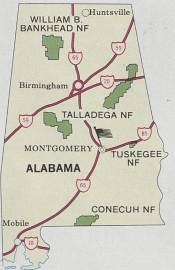


RECREATION SITES	MAP KEY										
	Fee Area	Camping	Picnicking	Swimming	Fishing	Boating	Drinking Water	Sanitary Pic	Hiking Paths	Trailer Dump Sta.	Toilets
<b>WILLIAM B. BANKHEAD NF</b>											
BRUSHY LAKE	1-B	•	•	•	•	•	•	•	•	•	•
CORINTH	2-B	•	•	•	•	•	•	•	•	•	•
HOUSTON	1-B	•	•	•	•	•	•	•	•	•	•
NATURAL BRIDGE	1-B	•	•	•	•	•	•	•	•	•	•
SIPSEY RIVER	1-B	•	•	•	•	•	•	•	•	•	•
<b>CONECUH NF</b>											
BLUE POND	8-D	•	•	•	•	•	•	•	•	•	•
OPEN POND	8-D	•	•	•	•	•	•	•	•	•	•
<b>TALLADEGA NF</b>											
COLEMAN LAKE	3-F	•	•	•	•	•	•	•	•	•	•
LAKE CHINNABEE	5-D	•	•	•	•	•	•	•	•	•	•
PINE GLEN	4-E	•	•	•	•	•	•	•	•	•	•
PAYNE LAKE	3-A	•	•	•	•	•	•	•	•	•	•
TUSKEGEE NF											
TASKA	8-E	•	•	•	•	•	•	•	•	•	•

E—Electric Motors Only  
Y—Central sanitary dump station, no electrical/water hookups.

**N.F. HIKING TRAILS**  
 TALLADEGA N.F.—PINHOTI TRAIL SYSTEM  
 CONECUH N.F.—CONECUH TRAIL  
 TUSKEGEE N.F.—BARTRAM TRAIL

#### KEY MAP



### NATIONAL FORESTS IN ALABAMA

- U.S. DEPARTMENT OF AGRICULTURE  
FOREST SERVICE  
R. MAX PETERSON, CHIEF
- LEGEND**
- National Forest Boundary
  - Ranger District Station
  - Recreation Site
  - National Forest Land
  - State Parks
  - Wilderness Area
  - Urban Area
  - Interstate Route
  - Primary Route
  - Secondary Route
  - Other Route
  - Trail
  - Interstate Highway
  - Interchange
  - U.S. Highway
  - State Highway
  - County Route
  - Forest Route

