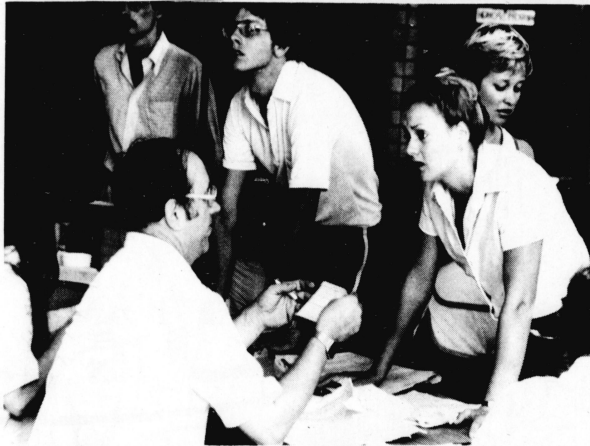


# KENTUCKY Kernel

Vol. LXXII, No. 10  
Wednesday, August 29, 1979

An independent student newspaper

University of Kentucky  
Lexington, Kentucky



Although problems still exist

## Students like apartments

By JAY FOSSETT  
Campus Editor

Although some problems still exist in UK's new apartment complex, most students living there say they are satisfied with the newest addition to the UK campus.

Four weeks ago, a summer edition of the *Kentucky Kernel* reported that major fire code violations found at the complex required construction modifications in all 25 units. The violations were discovered after a building inspection by the state fire marshal's office.

Deputy Fire Marshal Terry Slate said the buildings did not contain "fire stopping."

Fire stopping is a term used to describe materials that restrict fire from spreading. If a room is surrounded by fire stopping, the chance of the fire spreading becomes minimal.

Steve Pence, a law student who is the resident manager of the complex, said that workmen finished installing fire stopping last week and the only work continuing is to correct minor maintenance problems.

Although students said they were happy with the new apartment complex, several cited problems in plumbing, missing furniture, mechanical difficulties and various other areas.

Jay Dernovshek, an engineering junior and resident in one of the apartments, said there were several

problems in his apartment. In addition to having no lamp or window shades, he and his roommates had experienced some plumbing problems in the bathroom.

"I went into the bathroom this morning and saw about three inches of brown water backed up in the bathtub," Dernovshek said. "They (maintenance men) said that a pipe had broken and they would have it fixed in the next few days."

Dernovshek's roommate, Rick Denisevich, said he and his roommates have yet another problem in the apartment. He said that whenever anyone takes a warm shower and the steam escapes into the hallway, it sets off the smoke detector.

"When you have four guys with different schedules and that alarm goes off, it causes a problem," Denisevich said. "One guy might have an early class and another might be sleeping late."

Even with the kinks still being ironed out of their apartment, Dernovshek and Denisevich said they are satisfied with their living conditions and are looking forward to living in the complex during the school year.

Martha Goldbeck, an accounting sophomore, said she is also missing some furniture and having problems with plumbing in her apartment. "Everytime someone takes a shower on the second floor, it leaks down into my bathroom," she said.

But even with the leaking walls and missing furniture, Goldbeck said she still likes her new apartment. "I'd take it over Donovan (a freshman dorm where she lived last year) anytime."

Another apartment resident, Communications sophomore Kym Russell, said she and her roommates also had a few minor problems. She said the air conditioning unit in her apartment was on the blink but added that workers were scheduled to come later in the day to fix it. And, like in most of the other apartments, Russell and her roommates had lamps without shades.

Pence said that about "90 percent of the furniture has arrived at the apartments."

"We have more single students than originally anticipated," he said, "and because of that, we are a little short of some furniture." Pence said the additional furniture will be shipped to the apartment complex in the next couple of weeks.

He said the main problem with the apartments is that "they haven't been lived in yet," and he added that it will probably take about two or three weeks to get all the kinks out.

"We sat down before we opened up (the complex) and talked about the expected problems," Pence said. "The problems are a lot less than we expected."  
"Most students realize the problems associated with this situation and have been very considerate," he said.



Drop/Add  
or  
Drop Dead

Freshman Latonia Hilliard (above) gives a common grimace in UK's drop/add lines. To the right, Connie Hardesty, sophomore, seems to be thinking, "When will it all be over?" For many, drop/add frustrations were over yesterday, for others, it is just beginning.

By DAVID McCREARY/Kernel Staff

## Student Health Service changes policies for Blue Cross/Blue Shield, health fees

By CINDY MCGEE  
Copy Editor

Nearly 4,000 UK students will be affected by the UK Student Health Services' changes concerning the Blue Cross/Blue Shield policy.

The Student Health Service will no longer sponsor the policy enrollment process, which costs about \$15,000 each year. Instead, the funds will be used on a new campus-wide program for preventive health, fitness and health education. Student Health Services Administrator Jean Cox said, "The goal of Health Services is not

only to take care of students who need direct medical care at the clinic, but also to assist students who are interested in health and fitness," she said.

The new program will offer weight control groups, cardio pulmonary resuscitation training, nutrition workshops and other health-related courses.

The 72-hour time limit to pay hospital charges on injuries resulting from accidents is another change in the Blue Cross/Blue Shield policy. Under the new rule, there is no time limit, Cox said.

Also, the new policy pays the entire

charge of diagnostic laboratory X-rays up to a limit of \$100, rather than the partial payments made under the old policy.

A major medical benefit added to the Blue Cross/Blue Shield policy provides coverage of 80 percent of hospital bills up to a \$25,000 limit. It also covers 100 percent of hospitalization bills beyond the \$25,000 expenses up to a maximum of \$250,000.

Cox said the UK Blue Cross/Blue Shield policy is 60 percent less than comparable coverage is on an individual basis.

Continued on page 7

## Ma Kelly's Home-cooked meals appeal to all

By MARK GREEN  
Copy Editor

If the way to a man's heart is through his stomach then Ma Kelly is the best-loved woman in Richmond, Ky.

"Ma Kelly's" or "Kelly's Restaurant" is an institution in Richmond. The mayor, Jim Todd, eats there every day according to owner-operator Ann Kelly (Ma's daughter-in-law); local judges and even visitors from out of state are often customers too.

So what's the big attraction? "If it comes from Ma's it's good," said one customer who has been eating there for eight years. "He eats here every day," said Ann Kelly "and he works at Pizza Hut," she added with a smile.

The place has a down home quality that Aunt Bee on *The Andy Griffith Show* would have a hard time duplicating. As you enter the unassuming little white building with its tin roof over the front porch, the feeling is that of a country kitchen. There is a sort of "homeyness" and an efficient use of space. Oppulence will not be found here.

The furniture is secondhand. A counter with swivel stools stretches down one side of the room, tables and

chairs down the other. The walls have shelves full of canned and dry goods that are left over from the days when the building was just a neighborhood grocery store. Occasionally someone will still do their shopping there according to Ann Kelly. But, restaurateur pays the bills.

Ann, who has been the restaurant business in one form or another for 21 years, bought the business from Ma in April of this year.

"Ma couldn't run the business anymore," Ann said. Ma sold the business "so she could do as she wanted to."

Ma still works almost every day cooking in the kitchen, which is immediately off the front room. After entering and giving one of the nine employees your drink order, you walk into the kitchen and fill your plate: chicken breast 75 cents, chicken thigh 50 cents, chicken leg 25 cents, vegetables 25 cents a spoon (a large spoon), drinks 15, 25, and 35 cents, etc.

The menu is always the same with chicken, meatloaf and spaghetti as the entrees.

Edith Reynolds, who has been working for or with Ma since she was a teenager, walks up with her little notepad, sizes up the plate and quotes the price of the meal. No matter how high you pile a plate there is almost no way you can spend over \$3.00. Seemingly, the price of your meal can be affected by the clothes a diner wears. The better the clothing, the higher the price. Jim Cleveland, *Kernel* production manager and former resident of Richmond, said that on two occasions he got the same meal and paid 30 cents more for one than he did the other.

That is part of the charm of Ma Kelly's. The clientele varies across the spectrum. At lunchtime on any given day, business suits can be seen along with soiled workclothes from the farm, cut off denim jackets with Harley-Davidson patches, and alligator shirts, tennis shorts and topsiders.

There is a steady stream of customers throughout the day according to Ann Kelly, who was busy cooking chicken when interviewed yesterday. She said she had no idea how many customers come in a day, but she generally uses 150-160 pounds of chicken a day and eight or nine 10 pound meatloafs.

Business picks up at lunchtime

according to Ann and the place gets very crowded. There is a back room in addition to the front dining room to seat customers and there are picnic tables in the back yard. But, according to Cleveland, even this is sometimes not enough space. He said that other rooms, where the Kelly's (Ann and her husband) reside, are sometimes opened and he has seen customers eating meals while sitting on the edge of their bed.

The restaurant is open Monday through Saturday from 6 a.m. to 4 p.m. with breakfast from 6 to 10 a.m. The cooking begins around 5 a.m. each day Ann said.

And how do you get to such a wonderful place you ask?

Get on I-75 and go south toward Richmond. Take the exit on Third Street and go five blocks, then, right on the corner of Third and Walnut Streets there it is — Ma Kelly's.



By JIM CLEVELAND/Kernel Staff  
EDITH "MA" KELLY

## today

### local

**A NINE-YEAR-OLD BREATHITT COUNTY BOY** died Monday at the UK Medical Center, two weeks after he was struck by a tanker truck at a school bus stop. Shane Cogwell of Van Cise was a fourth-grader at Lyndon B. Johnson Elementary School. State police said the youth was preparing to board a stopped school bus and was hit by the truck when its driver swerved to miss the bus.

### state

**ATTORNEY GENERAL ROBERT STEPHENS** said Tuesday that Kentucky will not seek a public hearing on an order that halted safety-related constructions on the Marble Hill Nuclear Power Plant in southern Indiana. The Nuclear Regulatory Commission has issued an order stopping Public Service Indiana from continuing safety-related work on the plant near Madison without NRC approval. The work had been stopped voluntarily by PSI three weeks ago after questions were raised about the quality of construction.

### world

**AN EXTERMINATOR'S TRUCK OVERTURNED** on rural Jessamine County road Monday dumping 150 gallons of a termite pesticide into the Wymer Branch of Hickman Creek. The chemical was a one percent chlorodane solution. The mishap could have been worse because the solution sometimes is as strong as seven percent. However, the one percent solution still presented a danger to any livestock that drank from the creek. Clean-up crews dammed the small branch to prevent any of the chemical from reaching the Kentucky River.

### nation

**MAJOR BANKS RAISED THE PRIME RATE** to a record 12 percent yesterday as the economy continued to feel the effects of efforts by the new chairman of the Federal Reserve Board, Paul Volcker, to fight inflation. Some economists have warned that by raising interest rates the Federal Reserve risks causing an even deeper recession than the one the United States appears to have already entered. The old record of a 12 percent prime rate was set in 1974.

### weather

**HURRICANE DAVID**, described as one of the most dangerous storms in decades, bore down on the island of Barbados in the Caribbean Tuesday sending residents and thousands of Americans and other tourists scurrying for shelter. U.S. National Weather Service officials clocked sustained wind of 130 miles an hour in the storm, and said gale-force winds extended 125 miles northward and 75 miles southward from the center.

David, the second Atlantic hurricane and the strongest to threaten the Lesser Antilles since Hurricane Donna which killed 15 people as it ripped across Puerto Rico and Florida almost 20 years, the Weather Service officials said.

### weather

**IT WILL BE PARTLY CLOUDY**, warm and humid today through tomorrow. Widely scattered showers and thunderstorms are expected this afternoon and evening.

# KENTUCKY Kernel

editorials & comments

Debbie McDaniel  
Editor in Chief

Cary Willis  
Managing Editor

Jay Fousett  
Campus Editor

Lisa Dounnard  
Editorial Editor

Teresa Young  
Associate Editor

Mark Green  
Paul Mann  
Steve Manney  
Clody McGee  
Copy Editors

Thomas Clark  
Entertainment Editor

John Clay  
Sports Editor

Brian Rickard  
Assistant Sports Editor

Gary Landers  
Director of Photography

David Maynard  
Photo Manager

## Wildcat Lodge complies with NCAA, gains 'normal' students

The status of the Joe B. Hall Wildcat Lodge is no longer the question before UK officials and basketball fans since students have moved into the dormitory; the question now is how were these students chosen?

Workmen are stripping the Joe B. Hall Wildcat Lodge of its "splendor" in compliance with an NCAA ruling. The rule prohibits colleges from providing equipment and services to student-athletes which aren't available to the general student population.

Most of the plushness is gone from the Lodge — its kitchen and individual bathrooms have been boarded up; the flue in the fireplace is closed; the television screen, pinball machine and the blue and white telephones have been removed. With the addition of student residents, these changes have brought the Lodge into compliance with the NCAA ruling.

Two people share each bedroom and three students occupy each guest room. The "integrated" Lodge now holds 40 residents, a substantial increase over the 19 basketball players who resided in the building last spring.

Although the Lodge contains a mix of students and student-athletes, the basketball players live on the second floor and the students on the first floor. True, both students and student-athletes share the Lodge, but they are still separated by floors.

And, questions remain as to how these "normal" students — as Athletic Director Cliff Hagan described them — were selected. Were they chosen on an at-random basis, or hand-picked by members of the Athletic Association? What qualifications do you need to be chosen to live in the Lodge — a certain grade point average, references or can you audition?

"Having students living with athletes has a lot of positive points," Hall said Monday in the *Lexington Herald*. "The way I see it, Wildcat Lodge is going to be like a fraternity."

A fraternity?

Does this mean residents of the Lodge will be a student organization and receive privileges accorded to fraternities on campus? Will Hall "recruit" residents for the Lodge each year through a process similar to the fraternities' rush week?

And, will the basketball team be allowed to play

intramural sports with other student organizations on campus?

Although both students and basketball players live in the Lodge, if these students were not selected on an at-random basis some doubt exists as to the fairness of the decisions made by the Athletic Association or whoever actually made the selection. No one said every UK student should have a chance to live in the Lodge, but if these "normal students" are trainers for the team, tutors or water boys the team will still be isolated from the general student population.

There are arguments that UK's student-athletes are not isolated because they attend classes and eat in the same cafeterias, but living in quarters surrounded by people associated with basketball cheats players of the chance to form friendships with a variety of people that "normal" students in other dormitories form after living together for a year or more.

And, although the Lodge has lost many of its finer furnishings it does not seem fair that only students connected with the basketball team, the Athletic Association — or even as one rumor has it, the Board of Trustees — should have an opportunity to live with the basketball team.

True, some students are noisy and might disrupt the players who are trying to sleep before a big game, but after college these athletes are going to be living among "normal" graduates. They need to learn what it's like to live on their own, without the security and comforts provided by a university.

Even Hall said that placing students and student-athletes together has its good points. "I think it's going to be exciting and rewarding for our players," he said. If so, it would be nice to know that these "normal students" are just that — students who come to UK for reasons other than basketball.

To play basketball for UK is not a bad reason to come to this college, but it seems that the interaction between the basketball players and the students would be beneficial for both.

It is up to Hall and Hagan to help eliminate the isolation which has characterized the basketball team. If UK students knew they had an equal chance to live in the Lodge, it might change the relationship of students to the team from fans to friends.

## Letters to the Editor

### Honesty policy

Students should pick a governor whose positions on the issues are clear and well known. Gov. Nunn has made his position clear in the past and continues to make it clear now. While you may not always agree with him on every issue you do know precisely where he stands. He supports youth

issues; he saved the Red River Gorge; built NKU and increased state funding to all schools, and as governor created 43,000 new jobs young people need.

Students are concerned about honesty particularly in government. We demand honesty and openness in our public officials and that is precisely why John Y. Brown must reveal his income tax returns. All

members on both the Republican and Democratic slates have done so except Brown. Why? Is there something to hide? We as students want to know in order to make a good intelligent choice for governor. If Brown can't be open and honest he doesn't deserve our votes.

Kent Weber  
A & S Junior

### Letters policy

The *Kentucky Kernel* welcomes all contributions from the UK community for publication on the editorial and opinion pages.

Letters, opinions and commentaries must be typed and triple-spaced, and must include the writer's signature, address and phone number. UK students should include their year and major and University employees should list their position and department.

The *Kernel* may condense or reject

contributions, and frequent writers may be limited. Editors reserve the right to edit for correct spelling, grammar and clarity, and may delete libelous statements.

Contributions should be delivered to Room 114 Journalism, University of Kentucky, Lexington, Ky. 40506.

For legal reasons, contributors must present a UK ID before the *Kernel* will be able to accept the material.

#### Letters:

Should be 30 lines or less and no more than 200 words. They should concern particular issues, concerns

or events relevant to the UK community.

#### Opinions:

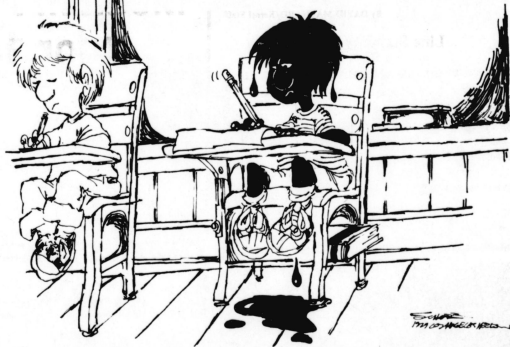
Should be 90 lines or less and should give and explain a position pertaining to topical issues of interest to the UK community.

#### Commentaries

Should be 90 lines or less, with no more than 800 words. These articles are reserved for authors who, in the editor's opinion, have special credentials, experience, training or other qualifications to address a particular subject.



I spent my summer vacation at the beaches.



### Subsidizing inefficiency

## Why should taxpayers pay for Chrysler Company's mistakes?

I drive a 10-year-old Dodge Dart. The body is falling apart; the doors never did work right; and the radiator seems to come pre-rusted. But the engine runs perfectly. It always has. Chalk one up for the Chrysler Corporation. When it made a small car, it made it well.

My wife bought a Honda last spring for \$6000. In *The New York Times* she sees the same car being offered, now, to the highest bidder over \$9000. That helps explain Chrysler's crowded sales

lots and empty ledgers. It did not make enough small cars.

The solution of big business, which spends alternate days denouncing big government, is the direct welfare dole (to supplement the indirect dole already given corporations by government contracts and tax laws).

### garry wills

Businessmen who do not want to "subsidize inefficiency" when that means feeding the poor, are very happy to see business inefficiency subsidized, even if that means feeding those dinosaurs, the gas-guzzling cars.

Not only is Chrysler asking for loans of credit from the government; it wants an exemption from anti-pollution standards. We are not only to subsidize inefficiency, but pay a company to keep breaking the law.

Government and business in America resemble a husband and wife who spend all their time in public insulting each other but go home to bed together every night. The bigger the corporation, the more does government feel obliged to bail it out

— to save jobs, to maintain

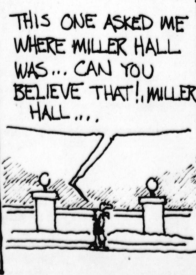
government contracts, to please the unions.

Given these relations, it is probably inevitable that Chrysler will be saved with government money, as Lockheed was. But the company should not be encouraged in its evil ways. President Carter wants to spend \$6.5 billion to develop cars that use less gas. Why do that, and at the same time subsidize a company that is going broke because it did not devote enough of its line to small and efficient cars?

The conditions of a loan to Chrysler should look to the public interest when spending the public's money. Chrysler should be bailed out only if it begins immediately a transition to the manufacture of nothing but six-cylinder cars under a certain size and weight. It may be necessary, someday, to make that a rule binding on all car makers. This is a good place and occasion to experiment with the idea.

Rather than being exempted from the rules that look to the public good, a company on the public dole should be made to meet even more stringent conditions. Among other things, that might make companies less ready to come to the government for a handout.

Garry Wills is a syndicated columnist who writes out of Boston.



# UK Student Center Board lines up jazz musicians for Memorial Hall

By CARY WILLIS  
Managing Editor

Jazz. That's the key word for this year's musical lineup to be presented by the Student Center Board Concert Committee.

Following the phenomenal success of last year's Spotlight Jazz Series, the Concert Committee will again be bringing some of the biggest names in jazz to UK's Memorial Hall. And the Gary Burton Quartet will kick things off Sept. 28 at 8 p.m.

Sonny Rollins will be at Memorial Hall Oct. 12, veteran drummer Max Roach Oct. 26, and Jeff Lorber's Fusion will be here Nov. 9. Vocalist Betty Carter will round out the season Nov. 30.

In addition to the jazz series, pop singer Gene Cotton, whose hits include "Before My Heart Finds Out" and the duet with

Kim Carnes, "You're a Part of Me," will appear in concert Sept. 13 in the Student Center Grand Ballroom.

Tickets to the Cotton concert are on sale now at the Student Center ticket window for \$5. Season tickets may be obtained for the jazz series at \$20 each, or \$6 per show, and they go on sale Sept. 4. SCB President Chris Batts said last year's season tickets were sold out the first day.

As was the case last year, there are 275 season tickets. The remaining 475 seats in Memorial will be sold on a per-show basis.

Batts claimed the Concert Committee is striving to bring other concerts to UK, but there are some problems. "Oh, we can get them (big-name attractions); the groups like to work with us," he said. "The students cater to the artists. We're not trying to make all kinds of money."

"The problem is, though, we can't fly equipment in Memorial Coliseum." ("Flying" equipment means suspending the amplifiers from the ceiling and walls instead of just setting them up on stage. Batts said the Coliseum's superstructure is too weak.)

The committee had attempted to draw Earth, Wind and Fire, but the band uses suspended equipment. "We're working on another concert, but who knows. It's all tentative," Batts said. "We tried to get Chuck Mangione, but he kept jacking his price up as his albums kept selling."

Batts said Rupp Arena has taken a few of the shows UK would have gotten if the arena had not been built, but he pointed out that some of the big names wouldn't have come to Lexington at all if it hadn't been for that large facility. He

said Rupp's completion has forced the Concert Committee to "go to smaller-cost acts."

Free music will also be available to UK students this year, in the form of Coffeehouse Concerts which are known for their informal atmosphere and, sometimes, snacks for the audience. Batts said these shows, which will take place on Monday and Tuesday of every other week in the Grand Ballroom, are to make use of local and regional talent.

But it's the jazz season in which Batts takes the most pride. "Oh, we're extremely pleased with the results," he said of last year's series. "Got us some good words from promoters nationwide. Some of the promoters would look at our line-up and really be impressed. And that helps us attract some of the big ones."



By DAVID MAYNARD/Kernel Staff

Line Standing 101

**Judy's**  
Hamburgers & Fries  
Freshness you can taste.

Single Beef Salad Bar Small Drink  
**\$1.96**  
(Regularly \$2.36)  
40¢ Off

Cheese or Tomato  
10 cents extra each

Expires Sept. 30, 1979

507 S. Limestone  
(Across from Campus)

The Kentucky Kernel, 210 Journalism Building, University of Kentucky, Lexington, Ky. 40506, is published each class day during the spring and fall semesters and weekly during the summer session.

Third class postage paid at Lexington, Kentucky, 40511. Subscription rates are mailed \$13 per year, \$6.50 per semester, \$2.00 for summer or one cent per year non-mailed.

Jim Cleveland  
Production Mgr.

Lynda Wilson  
Advertising Prod. Mgr.

NEXUS NEXUS NEXUS NEXUS NEXUS NEXUS NEXUS

We have the answers to your questions . . . .

**NEXUS**  
257-3921  
8 a.m. - Midnight

Brochures may be picked up in 213 Bradley Hall, Commons Library and 2nd floor of the Student Center.

NEXUS NEXUS NEXUS NEXUS NEXUS NEXUS NEXUS

**Medium Pizzas**  
**2 for 1** with this coupon  
(Expires Sept. 15, 1979)

Mon.-Sat. 11am-12pm

2001 Lexington  
Garden Springs Dr. Mall  
278-3204 269-6331

Clip Here and Take to Caesar's Pizza

**FULBRIGHT GRANTS 1980 - 1981**

Open to Graduates and Graduating Seniors for Overseas Study-Research.

Deadline October 1, 1979

Contact Jane Harberson  
Office for International Programs

118 Bradley Hall  
258-8908

**SONNY says Your appearance is our business!**

PLENTY FREE PARKING

Phone 266-7705

**KELLY (Sonny) HICKS**

**Sonny's**  
One Hour Cleaners & Laundry  
804 Chevy Chase Place Lexington, Ky.

WELCOME BACK U.K. STUDENTS! from **the CAT'S MEOW**

10% Discount with U.K. I.D. *Perfect!*

Phone 252-0589  
Hours: 9 to 6 Mon. thru Sat.  
Evenings by appointment

HAIRSTYLING for Guys & Girls

Conveniently located at 329 Limestone. Next to 2 Keys

**DON McLEAN**  
AT THE LEXINGTON OPERA HOUSE

**Saturday, Sept. 8, 1979**  
at 8:00 p.m.

Tickets available at the Lexington Center Ticket Office or CHARGE-A-TICK 233-3535

- Vincent (Starry, Starry Night)
- American Pie
- And I Love You So

A Dan Brock Production

**The Office of Minority Student Affairs**

The Office of Minority Student Affairs was established in July of 1971 to provide on-going assistance and support to minority students prior to and subsequent to their enrollment into the University of Kentucky. The purpose of the office is to provide minority students with the necessary information, resources, and environment conducive to the development, maintenance and growth of a positive self-concept as a pre-requisite to a meaningful educational experience.

The following functions are provided by the office:

- Short-term Counseling
- Advising
- Student Development
- Leadership Development
- Referrals
- Cultural and Educational Programs
- Organizational Program Support and Sponsorship
- Newsletter
- Minority Student Mailing List
- Community Outreach Programs

Room 1, Miller Hall Phone: 258-5641

**\$5 EXTRA**  
with this ad.  
For your first plasma donation.  
Total \$15.

Expires 12-31-79

**plasma alliance**

2043 Oxford Circle Cardinal Valley Shopping Center

M, Tu, Th 8 a.m.-9 p.m.  
W, F 8 a.m.-7 p.m.  
Sat. 8 a.m.-3 p.m.

Plasma Alliance would like to welcome back the students at UK, and we would like to thank all the students who helped our medical needs last year. We have expanded our modern facilities, and we now have 48 donor beds available. This means shorter waiting periods to donate (usually less than 10 minutes). We have an immaculately clean and professional facility. You can bring a book and read, relax, or watch T.V. during your plasma donations. Giving plasma is an excellent way to help others. Your donations are used to make shots for tetanus, mumps, and whooping cough, as well as many other products used daily in the hospitals. In addition you are paid for each donation, and you can make up to \$200 per month on our special antibody program. Please stop in and see us at your convenience. Our new hours of operation are Mon., Tues., Thurs. 8 a.m.-9 p.m. Wed., Fri. 8 a.m.-7 p.m. and Sat. 8 a.m.-3 p.m. New donors must be in one half hour before closing time.

**THURSDAY IS UK DAY!**

**BIG B**

TROUSERS, SKIRTS, SWEATERS, SPORTCOATS  
**89¢ EACH**

2 PC SUITS PLAIN 1 PC DRESSES  
**\$1.69**

SHIRTS LAUNDERED TO PERFECTION, FOLDED OR ON HANGERS

1 HOUR CLEANERS

44¢ EACH

Chevy Chase Lexington Mall Crossroads Winchester Road Lansdowne

Northland Turfand Mall Versailles Road East Picadome

Line Standing 102

## Cancer Hopeline volunteers inform, counsel phone callers

TERESA YOUNG  
Staff Writer

"Hello, Cancer Hopeline, Claudia speaking," said a voice at the end of the line. "Yes, I'll be glad to listen to you and help if I can."

The voice is Claudia Andrews, director of Cancer Hopeline, who along with 10-15 other volunteers will try to answer any question ranging from financial help, depression or problems family and friends of cancer patients are having.

Cancer Hopeline is an information and counseling telephone service operated by Ephraim McDowell Community Cancer Network to assist anyone seeking help with cancer-related problems.

"The Cancer Hopeline is to serve cancer patients and family," Andrews said. Maureen Donovan, assistant director for communications of Hopeline, echoed Andrews saying the main objective of the Hopeline is to inform people.

A grant from the United Way of the Bluegrass helped to fund the Cancer Hopeline in 1976 when Donovan developed the idea of the line. She started the line because she "was concerned that patients and their families were not able to find information" about cancer.

Donovan said the original amount of money from the United Way was not enough to continue the Hopeline so she asked her boss, Dr. David Goldenberg, for funds.

"He really supported me about the Cancer Hopeline," said Donovan. "He committed the network for the cost of the line."

This past February the line was designated as an official Cancer Information Service by the National Cancer Institute. The Cancer Hopeline is the only cancer information service in Kentucky.

Also, in August, the Hopeline received a \$178,000 grant from the Institute to continue their service and was recognized for its outstanding training program for the Hopeline volunteers.

Andrews, coordinator of the volunteers, works with Dr. Roy Remer and his wife, Kathy, in recruiting, training, scheduling and maintaining the volunteers.

There are several different types of volunteers which work with the Hopeline. The main workers are the telephone counselors, but there are also people who follow-up on Hopeline calls and office workers.

This past year Dr. Remer started a graduate level class at UK whose students work as

Hopeline volunteers. "The majority of the students in the class are from the department of Educational Psychology at UK," Andrews said.

"This is a good experience for the students because they are learning what techniques they are comfortable with when counseling students," he said.

The majority of the training done with the volunteers is aimed at increasing their knowledge on certain aspects of cancer such as psycho-social, ethical, legal and financial areas.

The students are required to man the line four hours per week and attend a majority of the training sessions offered during the semester. "The speakers at the sessions are oriented toward problems and questions the volunteers are asked by people calling in," said Lexine Lathrem, public relation associate for the Hopeline.

When a person calls the Cancer Hopeline the volunteer

first tries to get into the personal problems and the possible underlying problems. Then the volunteer can give information to the caller.

One aspect of the Cancer Hopeline, Donovan said, is the fact the volunteers spend more time on the phone with the callers than the national service.

"Kentuckians have shown that listening is as important as counseling," she said.

There is also an extensive follow-up program in operation at the Hopeline office. Brochures, return calls and referrals to other agencies are done with as many calls as possible.

The Cancer Hopeline operates every weekday from 9 a.m. to 5 p.m. They have a toll-free number anyone in the state of Kentucky can call 1-800-432-9321. They also have a local number, 233-6333. If someone calls after these hours, they are given the national service line toll-free number.

803

Presents

Happy Hour Prices  
All Night Long

Every Wednesday Night!

.75 and 1.00  
Mixed Drinks  
1.65 and 2.15  
Pitcher Beer  
.55  
Canned Beer

803 South  
S. Broadway  
233-9078

"Old UK Tradition"

FED UP?

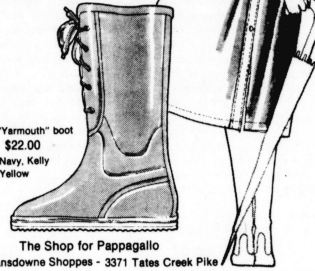


(Already!)

Punch their lights  
out with a letter to  
the editor.

Pappagallo

Pappagallo gals adore our splashy city slicker with the drawstring hood, snappy snap front, sleeve pocket and deep side pockets. A dress-length delight that's so comfy and waterproof-it'll keep you singin' in the rain! \$25.00  
Black, Camel or Wine



Tall "Yarmouth" boot  
\$22.00  
Navy, Kelly  
Yellow

The Shop for Pappagallo  
In the Lansdowne Shoppes - 3371 Tates Creek Pike

ALFALFA



557 S. Limestone  
Across From UK Main Gate

RESTAURANT

253-0014

Daily Specials

Meat & Vegetarian Entrees  
Homemade Whole Wheat Bread  
& Desserts - Espresso  
Coffee & Herbal Teas

A New Menu Every Meal

Lunch: Tue-Fri 11:00-2:00  
Dinner: Tue-Thur 5:30-9:00  
Fri-Sat 5:30-10:00  
Brunch: Sat. 10:00-1:30  
Sun. 10:00-3:00



INTERESTED IN JOINING A  
**SORORITY?**

IT'S NOT TOO LATE TO SEE  
WHAT IT'S ALL ABOUT

**OPEN RUSH**

BEGINS THE 29th OF AUGUST  
CALL 257-2651 OR REGISTER IN  
575 PATTERSON OFFICE TOWER

**NOTICE!**

TUITION FEE  
PAYMENT POLICY

1. A student's registration will be cancelled on September 12, 1979 if tuition fees are not paid.
2. Students who are cancelled may be reinstated from September 13 through September 21 by paying their tuition fees plus a \$50.00 reinstatement fee.
3. After September 21 students who have not paid their fees will not be permitted to attend the University the Fall Semester.

OFFICE OF BUSINESS AFFAIRS  
UNIVERSITY OF KENTUCKY

## HEALTH SERVICE INFORMATION

For your convenience, the Health Service will have a table in the Student Center at the foot of the ballroom stairs during the first week of school:

Monday through Friday,  
Aug. 27 - Aug. 31

9:00 a.m. - 3:00 p.m.

You can pay your health fee and/or pay for the U.K. Student Blue Cross/Blue Shield Group Insurance Plan at that table.

**THE FALL SEMESTER  
HEALTH FEE IS ONLY \$18**

## BIG DADDY LIQUORS

372 Woodland Ave.

253-2202

Welcome Back  
UK Students and Faculty!

Little Kings

1.79 8 pk

5.37 case

BEER

3.99 case

Iron City

24-12 oz. Returnables

Moose Head  
Canadian Lager

3.69 6 pk

14.76 case

12 oz. N.R. Bottles

HOW CAN YOU AFFORD TO SHOP ELSEWHERE!

# Chinese, American leaders to meet

By JOHN RODEERICK  
AP Special Correspondent

PEKING — President Carter and Chinese leader Hua Guofeng will exchange visits to China and the United States next year, Vice President Walter Mondale announced Tuesday after arranging talks with the Peking leadership about the future of Chinese-American relations.

Mondale said Hua, Chinese premier and Communist Party chairman, accepted Carter's invitation "with delight." Carter announced several months ago he had been invited by the Chinese government to visit China. Dates for the trips are not yet set.

Hua told Mondale he was aware it was the vice president's first visit to China and the first by such a high-ranking American since diplomatic relations were established January 1.

"So I extend you a special welcome because of these two firsts. It is a beginning, not an end," Hua said.

They met at a ceremony for the signing of a broad range of

agreements covering cultural exchanges and U.S. assistance for China in developing its hydroelectrical power resources.

The cultural pact for 1980-1981 covers education, art, broadcasting, sports and other area.

Mondale also announced he would open a U.S. consulate in Canton, "the first consulate we've had in China in over 30 years," when he visits southern China's biggest city during his current tour.

He said China will open consulates in Houston and San Francisco in the near future.

Asked how he was adjusting to China, Mondale smiled and told reporters "I'm now an expert on Chinese food."

The vice-president delivered a speech Monday at Peking University and he said Tuesday he was pleased the talk had been covered in such detail by the Chinese media, which broadcast it on radio and television nationwide.

In it he said a strong China is in America's interests and offered the Chinese economic partnership in the 1980s along with a \$2 billion line of credit

from the Export-Import Bank. Senior Deputy Premier Deng Xiaoping Teng Hsiao-ping met with Mondale prior to his meeting with Hua and told the vice president, "I heard your speech was warmly welcomed."

In the speech, Mondale promised the Carter administration would submit the Sino-American trade agreement for congressional approval before the end of the year. The pact contains a most-favored-nation provision that would reduce tariffs on Chinese goods entering the United States.

## Jordan cocaine story under attack

By ROBERT PARRY  
Associated Press Writer

WASHINGTON — An affidavit intended to buttress an allegation that Hamilton Jordan sniffed cocaine at a New York City discotheque last year came under sharp White House attack Tuesday.

Presidential press secretary Jody Powell denounced the affidavit from a patron of Studio 54 as a "concoction" designed to correct factual inaccuracies in earlier versions of the allegation against the White House chief of staff.

Robert Kasanof, an attorney for one of two Studio 54 owners under indictment for tax evasion, said the sworn affidavit was given Monday by Barry Landau, a New York

public relations consultant. Kasanof said the affidavit was then filed with the Justice Department.

Kasanof, who represents Studio 54 owner Steve Rubell, said that in the affidavit, Landau alleged that Jordan tried to obtain cocaine from him at the fashionable discotheque on a night in June 1978.

## Trade cans for cash

Student organizations can cash in on aluminum cans and other clean household aluminum items during September with the Reynolds Aluminum Recycling Company.

Reynolds pays for aluminum beverage cans and other clean household aluminum items such as pie plates, foil, frozen food and dinner trays and dip, pudding and meat containers.

Certain other items, such as aluminum siding, gutters, storm door and window frames and lawn furniture tubing and aluminum casting are also worth 23 cents a pound if properly prepared. This aluminum must be free of all foreign materials, cut to lengths not exceeding three feet and should not be mixed with cans.

The Reynolds Aluminum recycling unit will make its regular visits to Lexington every Tuesday in September from 11 a.m. to noon at Turfand Mall on Harrodsburg Road.

**LYNN BLUEPRINT & SUPPLY CO.**  
SPECIAL STUDENT DISCOUNTS  
DRAFTING EQUIPMENT & SUPPLIES



327 E. Vine St.  
Lexington, Ky.  
255-1021

**MONDELLI'S BAKERY Inc.**  
"We Bake Fresh Daily"

- Cake Specialists
- Donuts
- Cookies
- Bread
- Pies

"We Really Knead the Dough"  
Mon-Sat 6am-7pm  
Sun 6am-4pm  
3321 Lansdowne Shopping Center  
Store Only  
233-4096  
1485 Alexandria

**SUB CENTER**  
SERVING OUTRAGEOUS SANDWICHES



EAT IN TAKE OUT FREE DELIVERY

438 S. ASHLAND CHEVY CHASE

**FREE DELIVERY 269-4693**

REGULAR SANDWICHES	SUBMARINE SANDWICHES	WEIGHT WATCHERS SPECIAL
Served on White, Rye, or Whole Wheat Bread Lettuce, Tomato, Mayo Mustard or Onion on Request 10¢ Extra	Include Lettuce, Tomato, Onions, Cheese Seasoning and our own Top Secret Dressing	"DIET THING" A CHEF'S CREATION Portions of Roast Beef, Ham Turkey, Salami and Swiss Cheese on a bed of Lettuce with Tomato Slices and your choice of Dressing 1.95
ROAST BEEF.....2.29	MIXED.....1.55.....2.25	<b>MINI MONSTER</b>
BOLOGNA.....1.19	HAM.....1.55.....2.25	ROAST BEEF.....2.25
TURKEY.....1.29	SALAMI (Genoa).....2.55.....2.25	TURKEY.....1.55.....2.25
HAM.....1.55.....2.25	ROAST BEEF.....1.55.....2.25	LIVERWURST.....1.55.....2.25
HAM & CHEESE...1.29	TUNA.....1.55.....2.25	CHEESE.....2.55.....2.25
SALAMI (Genoa)...1.29	LIVERWURST.....1.55.....2.25	TUNA SALAD.....1.29
SALAMI & CHEESE.1.39	CHEESE.....2.55.....2.25	CHEESE.....1.19

**DELIVERY MINIMUM \$1.75**

MON-THUR 10 A.M. to 12 P.M.  
FRI-SAT 10 A.M. to 2 A.M.  
SUNDAY 11 A.M. to 12 P.M.

We Accept Checks



**the Wicker Bazaar**

WOODLAND AT MAXWELL AND IMPERIAL PLAZA

SPECIALIZING IN:  
RATTAN, CANE, AND BAMBOO FURNITURE,  
BASKETS, GIFTS AND ACCESSORIES.

GOOD FOR **10% OFF**  
ON ANY REGULAR PRICE MERCHANDISE  
OFFER EXPIRES Oct. 30, 1979

**KINKO'S COPY SERVICE**

Xerox Copies \* Dissertations \* Bindings

Our Xerox 9400 will allow you to reproduce at our regular low price of only 4¢ a page with no minimum required.  
Dissertations copied on watermarked 100% cotton bond 8¢. 50% cotton only 7¢. And we do all the work.

**Grand Opening Sale!**

1st Visit	2nd Visit	3rd Visit
3 1/2¢	3 1/2¢	3¢

With This Coupon  
Expires Sept. 30, 1979  
8 1/2 x 11 Loose Sheets  
Price Per Copy  
No Minimum

**KINKO'S**  
345 S. Limestone 253-1360

**shoppers village liquors**

We're full of high spirit at five Lexington locations including Chevy Chase Place.



**Keg Facts**

1/4 BARREL=7 1/4 GALLONS (82 12-OZ. CANS) 1/2 BARREL=15 1/2 GALLONS (165 12-OZ. CANS)

**\$15-\$23** PLUS DEPOSIT ON EQUIPMENT  
**\$27-\$41** PLUS DEPOSIT ON EQUIPMENT

**BEER FEATURES**

<b>BOURBON</b>	Shoppers 4 Yr. 80° 5th \$4.59	<b>MILLER</b> 6-Pak 12-Oz. N.R. \$1.69
Makers Mark 90° 5th \$8.48	<b>Old Milwaukee</b> 12-Pak 12-Oz. Cans \$2.69	<b>PABST</b> 12-Pak 12-Oz. Cans \$3.09
<b>VODKA</b>	Shoppers 80° 5th \$3.89	<b>STROHS LIGHT</b> 6-Pak 12-Oz. Cans \$1.69
Tanqueray 94 6° 5th \$8.50	Smirnoff 80° 5th \$5.29	

# Co-ed

**Survey shows that parents approve with co-ed dorms**

**NEW YORK** — In a startling reversal of parental attitudes from as recently as ten years ago, nearly 95 percent of parents whose children live in co-ed dormitories approve of the living arrangements, according to a nationwide survey of college students.

The survey was conducted by *McCall's* and the results appeared in the September issue published August 15.

The statistics and personal comments of students indicate that the relaxed living arrangements have lessened the traditional campus preoccupation with sex.

More than half of the young people surveyed who live in co-ed dorms have little or no sex lives; more than 37 percent of these students say they never have sex; more than 16 percent claim to have sex "less than once a month."

Less than 18 percent say they have sex "more than twice a week," it was reported in *McCall's*.

Almost 85 percent of college men and women sharing campus living quarters say they do not date anyone living in their own dorms.

"The atmosphere isn't the least bit sexy," a female junior told *McCall's*. "We live together like brothers and sisters; it's all very family like, domestic and, uh, well chummy."

Almost 80 percent of student respondents say that co-ed

living has made it easier to form non-sexual relationships with the opposite sex.

Most students (84 percent) living in co-ed dorms report feeling "more at ease" with the opposite sex; 58 percent claim their "understanding of the opposite sex" has improved as the result of co-ed living arrangements; and 44 percent say they "appreciate" their opposite counterparts more.

Similarly, more than 60 percent of the men and women say sharing living space with the opposite sex caused "no change" in their feelings toward one another.

"Co-ed dorms don't lead to greater promiscuity," a male freshman told *McCall's*. "They lead to more brother-sister relationships. In single sex dorms, girls tend to pounce on any guy who passes through because they are denied the company of the opposite sex. Whether or not one chooses to indulge in premarital sex isn't a function of where you live, but of who you are," he said.

Sex and sex-related issues comprise less than six percent of students' complaints about campus living. Half of students griped about "circumstances that make it difficult to study" or "lack of privacy."

Only 3.3 percent of all respondents listed "too much sexual pressure" as one of their annoyances. "And the comment that 'more sexual pressure' exists in single-sex

dorms was not at all uncommon," according to the editors at *McCall's*.

The five-page questionnaire was sent to a carefully selected cross-section of colleges and universities across the country. Of the 690 respondents 543 lived in co-ed dorms.

The majority of students were freshman and sophomores between the ages of 18 and 21. Among the colleges included in the survey were University of Michigan, University of California at Santa Cruz, University of Illinois, Ohio Wesleyan.

Additionally, students and faculty from Yale, Stanford and Bennington, among others, were interviewed.

## Wanted



**phone persons**

Part or full time. Flexible hours and days. Must be at least 18. \$3.00 an hour to start.

Apply in person between 4:30 pm and 9:00 pm. 820 Lane Allen Rd. 1641 S. Limestone 470 New Circle Rd. N.E. 1395 Trent Blvd.



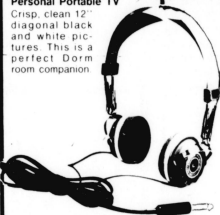
© Copyright 1978

# Back-To-School SPECIALS

Start the school year off right by shopping Barney Millers. We've chosen these special values especially for students. Everything here has Barney Miller's One Year parts & service warranty. Prices are good through September 5th.



**MAGNAVOX**  
5300 Personal Portable TV



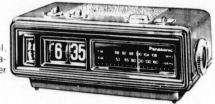
**Panasonic** \$28.  
EAH-510 Personal Headphones

These lightweight headphones will turn your head into a Concert hall without waking up the neighborhood. Take a test listen.

**Panasonic**

RC-6010 Digital Clock Radio. Has AM-FM radio, doze control, music or buzzer alarm, and panasonics 2 yrs. warranty. You'll never need to be late for class.

**\$24.**



**MAGNAVOX** AL070

Battery Operated AM-FM Pocket Portable. You can take the music with you. We include the batteries.

**\$12.<sup>88</sup>**



**Panasonic**

RC-3325 AC/Battery Mini-Cassette Recorder. This popular model with carrying case makes note taking easy. This is an excellent value. We even include the batteries.

**\$76.**



## COUPON

**Scotch** Clip Coupon Good for **15% OFF** (marked single unit price) ANY QUANTITY (if available). Offer void after September 15, 1979.

## Delivery Help

Domino Pizza has immediate openings for full & part time. Our drivers earn \$4.00 to \$5.00 per hour. Must be 18 & have reliable car with insurance, able to work nights & weekends & hustle during rush hours. Starting wage \$3.00 per hour plus tips, mileage & bonus.

Apply in Person from 4 to 8 p.m. At Any Domino Pizza location. Advancement Opportunity Available.



## Today's Image

HAIR DESIGNS FOR TODAY'S STYLE. Welcome to School. Special with This Ad you get a Hairstyle designed for you and also a bottle of Apple Pecten. Shampoo for only \$10.00.

264 W. Main (Across From The Courthouse) 254-4874

## SEX

The Mathematics Department needs graders of either sex.

## MONEY

Grading pays \$135 per semester per course. For each course that you grade, you are expected to work a maximum of 4 hours per week and 50 hours per semester. Graders may work 4, 8 or 12 hours per week. The job is grading homework papers and quizzes for lower division mathematics courses.

The Mathematics Department also has a limited number of positions as study hall tutors. Study hall will be conducted in the AIDS room of the King Library at the following times: Monday through Friday, 12 noon to 1:00 pm; and Monday through Thursday, 6:30 pm to 8:30 pm. (You do not have to be available for work during all of these hours.) The job is tutoring students in lower division math courses. You must have completed the calculus sequence to apply.

(The Math Department also maintains a tutor list.)

## WHERE TO APPLY

Math Department  
713 Patterson Office Tower

## WHEN TO APPLY

By 4:00 Friday, August 31.

Think Kernel



To Find A Bargain Kernel Advertising

It All Begins At...

**McAlpin's Styling Salons**

With A Back-To-School Precision Cut

Everybody's doing it... It's health... It's vitality... It's grooming... It's the cut of your clothes and the cut of your hair. For the clean cut look begin with the clean cut "cut"... at any of our McAlpin's Styling Salons. We welcome men, women, & children.

*John Mack*

Call and make an appointment or just drop by, appointments not always necessary.

Lexington Mall 269-3511 Turland Mall 272-2195 North Park 254-4046 South Park 272-1811

## Health fee increase benefits most students

Continued from page 1

Although some services have been discontinued, the \$3 increase in the student health fee will bring most students additional benefits, Cox said. The \$18 health fee will no longer cover physician charges made outside the Student Health Services. However, students will not be required to pay the \$10 charge for treatment at the UK Medical Center Emergency Room when Student Health Services are closed.

The Health Service administrative staff and the Student Health Advisory Committee made the changes in May because of rising costs in their student services.

Cox said these decisions were made "to provide a greater number of services to a greater number of students." Nearly 70 percent of UK's student population is covered by the health fee and only a few need the care of outside

## Physicists find a new particle

By SUSAN J. SMITH  
Associated Press Writer

BATAVIA, ILL. — An international team of physicists has found "strong" evidence of a new particle, the gluon, that holds together the centers of atoms like glue, scientists said Tuesday.

The new particle is not expected to have any immediate practical application, scientists said, but its discovery represents a fundamental step forward in human understanding of nature.

Scientists at a physics symposium at the Fermi National Accelerator Laboratory here presented the first direct evidence this week for the elusive gluon particle, which was first predicted by theory about a decade ago.

Dr. Leon Lederman, director of the laboratory, said the finding gives key support to the current theory of the internal structure of neutrons, protons and other bits of matter once thought to be indivisible.

"Physicists are ecstatic," Lederman said. "We're beginning to understand how it's all put together."

The experiments that uncovered the gluon were conducted this summer by more than 300 physicists from Germany, Japan, the United States, England, Norway, France, Israel and Red China. They were working at a new nuclear accelerator in Hamburg, Germany, which was dedicated only last April.

The accelerator, known by its German acronym PETRA, made it possible to find the new particle because it smashed electrons and positrons together at three times the energy of any earlier machine. A positron is identical to an electron except that it has an opposite electric charge.

Colliding the two particles produces sprays of other particles which scientists can analyze to identify their origin. At very high energies such as in PETRA, one of the sprays can be traced to an invisible particle believed to be the gluon, which physicists had predicted would be emitted by the electron-positron collision if the two collided with enough force.

The discovery of the gluon gives added support to the theory that protons, neutrons and other elementary particles of a class called hadrons are made up of even smaller bits of material called quarks.

When their existence was proposed in the early 1960s quarks were thought of as no more than an interesting coincidence in the mathematics of elementary particles. But recently, evidence has been mounting that they actually exist.

doctors, Cox said.

The University did not increase the Health Service's funding from the 1978-79 year. According to Cox, this means all increases in Student Health Services must be met through student health fees.

Students may sign up for Student Health Services and the Blue Cross Blue Shield policy this week in the Student Center from 9 a.m. to 3 p.m.

After Sept. 3, students can pay the health fee at the Billing and Collections office in the Service Building until Sept. 21. The deadline to pay Blue Cross/Blue Shield policies is Sept. 28.

# THANK YOU

FROM PANHELLENIC

TO ALL RUSHEES  
RUSH COUNSELORS  
& SORORITY WOMEN

For Making Fall Formal Rush  
A Great Success!

VALUE WEEK AT

# Wendy's

CLIP COUPON!

PRESENT COUPON WHEN ORDERING

**FREE HAMBURGER**

WHEN YOU BUY ONE

Now at Wendy's Old Fashioned Hamburgers this coupon entitles you to a free Single Hamburger with the purchase of a hamburger of any size. Offer expires Sept. 5, 1979.

ONE FREE HAMBURGER PER COUPON



CHEESE AND TOMATO EXTRA

OFFER GOOD AT

757 New Circle Rd., Lexington  
1499 Boardwalk, Lexington  
1792 Alexandria Dr., Lexington  
575 Nicholasville Rd., Lexington  
3010 Richmond Rd., Lexington  
Eastern Bypass, Richmond

PRESENT COUPON WHEN ORDERING

**FREE FRENCH FRIES**

WHEN YOU BUY ONE

Now at Wendy's Old Fashioned Hamburgers this coupon entitles you to a free order of French Fries with the purchase of an order of Fries. Offer expires Sept. 5, 1979.

ONE FREE ORDER OF FRIES PER PERSON



PRESENT COUPON WHEN ORDERING

**FREE CHILI**


WHEN YOU BUY ONE

Now at Wendy's Old Fashioned Hamburgers this coupon entitles you to a free bowl of Wendy's rich, meaty Chili with the purchase of a bowl of Chili. Offer expires Sept. 5, 1979.

ONE FREE BOWL OF CHILI PER PERSON



# TOMOS MOPEDS



140 MPG

- Easy to Ride
- Perfect for Campus
- No Parking Problems

2 spd Auto Transmission

- All Chain Drive
- No belt to slip

Reg. \$549  
Sale \$489

Bank Financing Available

## Cycle Center

The Best Deals on Wheels  
383 New Circle Rd. N.E.  
293-0551

# Kawasaki - Suzuki

SPECIAL SALE

# ACHIEVEMENT




## ARTCARVED


COLLEGE RINGS

Visit the Art Carved Representative This Week

Men's Contemporary



Women's Fashion



- Buy Now and Save on Selected Traditional and Contemporary Rings.
- See our Wide Variety of New Styles.


... symbolizing your ability to achieve

Date: August 29, 30 & 31

Place: University Bookstore

## UNIVERSITY BOOKSTORE

Deposit required. MasterCard or Visa accepted.



Supplier for the 1980 United States Olympic Team

# Good luck

on your first day of classes  
(You are going aren't you?)

# sports

## Wildcat Lodge undergoes changes to please NCAA

By BRIAN RICKERD  
Assistant Sports Editor

Students need not look upon the Joe B. Hall Wildcat Lodge with envy any longer.

Last week renovation was completed on the facility which finally brought it into compliance with legislation passed in January at the NCAA convention in San Francisco.

Gone are the wide-screen television, individual bath-rooms, first and second floor

lounges, easy chairs, ottomans, ping pong tables, pinball machine, and many of the plants which decorated the dorm. In addition, the seven foot long beds are not as wide as they used to be, and there are now two students to a room instead of one, and former guest rooms now hold three residents.

UK's athletic director Cliff Hagan said Monday the renovation of the lodge has increased its capacity from 19

to 40. The additional 21 students are "just normal students," said Hagan.

The story began last winter when the division one schools brought about legislation which initially said a school can't have better housing for student-athletes than for other students.

Confused by the vagueness of the ruling, the UK athletic department requested an interpretation from the NCAA. Hagan said he received that on June 1.

"The NCAA told us student-athletes could not live in housing that is better than more than half of the other students," Hagan explained.

In other words, if more than half the students at UK lived in luxury comparable to that of Wildcat Lodge, the facility would have been in compliance.

"We felt a little insecure about it," Hagan said, "so we asked the NCAA to send someone to look at our facility (Wildcat Lodge)."

Hagan said an NCAA representative came to look at the lodge during the second week of June but admitted it would not be practical to completely bring the lodge in compliance with the legislation.

"We told them what we would be able to do and they agreed to it," Hagan said.

Hagan said the NCAA was not "picking on the university," however he went on to say the legislation probably never would have been brought up had it not been for Wildcat Lodge which opened in January of 1978.

The former Wildcat All-American said it was the smaller universities in Division I that engineered the legislation.

Continued on page 10



By BILL BELL/Kernel Staff

"A mess," is probably the best way to describe the Wildcat Lodge now that it is undergoing reconstruction to meet new guidelines recently set by the NCAA. Several changes, such as the addition of more students and the removal of certain luxuries, are being taken to bring the Lodge into compliance with the NCAA.

## Phillip Gall & Son

### BAG IT!

Walking, biking, jogging or strolling to class hand-in-hand a book bag from ...

Phillip Gall & Son makes it easier. So give yourself a hand the next time you carry a book to class.

Bag it!

Name brands from:

- Dolt
- Kelty
- Sierra Designs
- North Face
- All bags nylon with reinforced stitching
- All bags waterproof

Colors: Navy, Royal Blue, Green, Red, Yellow and Brown

Many styles and sizes



Free parking, with purchase, in Rainbow Lot.

TWO LOCATIONS: • 230 W. MAIN ST. • LEXINGTON MALL

## Texas Instruments® Calculator Spectacular

### Attention UK Students!

If you don't want to spend your Friday nights figuring up anything more complicated than next week's football pool, you'd better get down to McAlpin's Texas Instruments Spectacular! The entire line of Texas Instruments calculators is on sale...from business to scientific and more! So don't wait till those math and engineering courses really get tough...get a calculator now...and save a bundle! McAlpin's offers you the lowest prices ever...really, check and compare.

TI-1030 Slimline 6 Function, LCD, memory Reg. 20.	16.99
TI-25 Slimline LCD Slide-Rule Calculator Reg. 33.00	18.88
TI Business Analyst Slimline LCD, Financial/Business With Statistics And Constant Memory Reg. 45.00	39.99
TI MBA Advanced Business Financial Calculator With Statistics And Programmability Reg. 70.00	57.99
TI-58 Advanced Programmable Reg. 125.	99.99

STATIONERY

# McAlpin's

LEXINGTON MALL      TURFLAND MALL

## Choose up to 4 of these software packages...FREE!

- Electronic Engineering
- Civil Engineering
- Mathematics
- Lab Chemistry/Marketing/Sales
- Fluid Dynamics
- Statistical Testing
- Securities
- Oil/Gas Energy
- Printer Utilities
- Programming Aids
- Blackbody
- Astrology
- 59 Fun!
- 3D Graphics
- Production Planning

\$20 value  
2 FREE software  
Packets with  
purchase of  
a TI-58C  
see coupon



\$40 value  
4 FREE software  
Packets with  
purchase of  
a TI-59  
see coupon

TI Programmable 58C — \$125.\*

TI Programmable 59 — \$300.\*

## Free software from Texas Instruments can help make this semester a little easier.

A special offer if you act now! From August 15 to October 31, 1979... that's your special opportunity to purchase one of the world's most advanced programmable calculators... and get up to \$40\* worth of free software Specialty Packages in your choice of 16 different application areas.

TI's Specialty Packages are a new way to expand the usefulness of your TI Programmable 58C or 59. The convenient notebook format includes complete step-by-step program listings, application notes, and sample programs. Just enter the program you need and you can put it to work right away.\*

Four FREE SPECIALTY PACKETES with the purchase of a TI Programmable 58C. A \$40\* value. Two FREE SPECIALTY PACKETES with the purchase of a TI Programmable 58C. A \$20\* value.

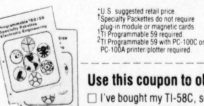
Both the TI Programmable 58C and 59 feature TI's exclusive Solid State Software™ plug-in library modules. Each 5,000-step module contains a wide selection of prerecorded programs. Optional library modules are available in a variety of fields, including engineering, science, statistics, and business.

The TI Programmable 59 has up to 960 program steps or up to 100 memories. Magnetic card read/write capability lets you record your own custom programs, or programs from your Specialty Packages. \$300.\*

The TI Programmable 58C features up to 480 program steps or up to 60 memories.

And it has TI's Constant Memory™ feature that retains data and program information even when the calculator is turned off. \$125.\*

Act now! Visit your college bookstore or other TI retailer for more information, and let him help you select the programmable that's right for you. Use the coupon below to take advantage of this special limited time offer.



### Use this coupon to obtain your FREE Specialty Packages.

- I've bought my TI-58C, send me these 2 free Packages.
- I've bought my TI-59, send me these 4 free Packages.

1 \_\_\_\_\_ 3 \_\_\_\_\_

2 \_\_\_\_\_ 4 \_\_\_\_\_

Send to: Texas Instruments, PO Box 53,  
Lubbock, TX 79408

Texas Instruments will fulfill the offer you have selected above when you: (1) return this completed coupon, including serial number; (2) along with your completed customer information card (packed in box); and (3) a dated copy of proof of your purchase verifying purchase of a TI Programmable 58C or 59 (whichever is applicable) between August 15 and October 31, 1979. Items must be postmarked on or before November 7, 1979, to qualify for this special offer.

Name \_\_\_\_\_  
Address \_\_\_\_\_  
City \_\_\_\_\_ State \_\_\_\_\_ Zip \_\_\_\_\_  
Calculator Serial Number (from back of calculator) \_\_\_\_\_

Please allow 30 days for delivery. Offer void where prohibited by law. Offer good in U.S. only.

Texas Instruments technology — bringing affordable electronics to your fingertips.

TEXAS INSTRUMENTS  
INCORPORATED





**Says Hagan**

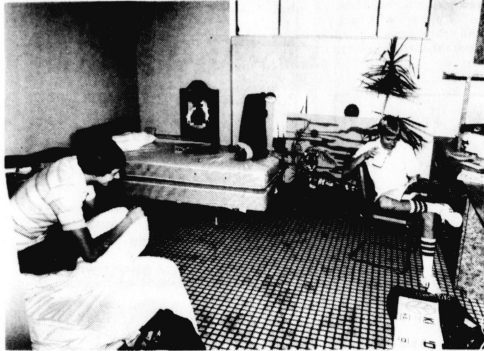
**Smaller schools passed dorm law**

Continued from page 8  
 "Large schools are outnumbered by the smaller ones," he said, "so the small schools control legislation."  
 Hagan said UK athletic housing should not have been singled out. He pointed to other dorms such as the

football dorm Bear Bryant had built for his athletes at Alabama 14 years ago and the Jayhawk Towers, an athletic complex built at the University of Kansas which was financed by Phillips Petroleum.  
 In all, Hagan said he thought three-fourths of the schools in

the nation with special athletic housing are not in compliance with the NCAA legislation.  
 "People are a little more aware now," Hagan said when asked why it took Wildcat Lodge to bring about an uproar that apparently should have

happened a long time ago.  
 "They are more vocal and willing to complain."  
 While admitting the lodge will now be "less manageable from Joe Hall's point of view," Hagan said the facility "will still be a big plus for our program."



By BILL BELL/Kernal Staff

Freshman basketball player Tom Heitz and neighbor Mike Perros, an Agriculture senior, relax in Heitz's room at the Wildcat Lodge.

Under new guidelines set down by the NCAA, students such as Perros have been moved into the Lodge.

**Fitness program open to students**

A physical fitness program will be available to all UK students beginning Tuesday, Sept. 4 from 3 to 5 p.m. Monday, Wednesday and Friday.

Interested students should report to the basketball training room in Memorial Coliseum and bring a doctor's statement certifying that they are physically fit to participate in strenuous activity.

Students must furnish their clothes, etc.

**The FOX is Coming**

**ALLERGY-HAY FEVER SUFFERERS OPPORTUNITY TO EARN \$50**

If you now have, or anticipate having, nasal congestion and related symptoms due to a seasonal allergy, you can earn \$50 by participating in a one-day medical study. Subjects needed every day during August and September. For more information call weekdays 1-4 p.m. 257-2770

**Even you can be a Kernel writer**

**St. Stephen's Orthodox Church (American Jurisdiction)**

Sunday Services 11:00 a.m. 170 American Ave. (behind Imperial Plaza) 873-5782

**YMCA**

**STUDENT ACTIVITIES**

Jogging - Swimming - Basketball Racquetball - Handball - Volleyball Weight Lifting - Body Building Fitness - Gym & Swims - Disco

Stop in For A Tour Or Call 255-5651 and 252-7543

Close Location to Campus

Monthly Payments with Small Downpayment

2 Locations 239 East High St. and 535 West Second St.

Visit Open House on September 16

**TO ALL OFF CAMPUS STUDENTS**

**University of Kentucky Food Services**

7635 NUMBER Jean F. Student Joan F. Student SIGNATURE

Here's your ticket to a more relaxing semester.

Think of all the advantages of having a meal card!

- \* not having to make frequent trips to buy groceries
- \* not having to cook after a busy day
- \* no dishes to wash
- \* no burnt food

**COST PER SEMESTER**

<b>PLAN 1</b> B, L, D - 7 days a week	<b>\$460.00</b>
<b>PLAN 2</b> Two (2) meals a day - 7 days	<b>\$412.00</b>
<b>PLAN 3</b> Two (2) meals a day - Mon.-Fri.	<b>\$333.00</b>
<b>PLAN 4</b> B, L, D - Mon.-Fri.	<b>\$384.00</b>

**MEAL CARD MAY BE BOUGHT**

- August 27 through August 31, in the Student Center Ballroom.
- Before August 27 or after August 31, contact the Housing Office in Rm 218 Service Building.

**Campus Calendar**

**Wildcat Welcome Week!**

Welcome Back to U.K.

- Activities Fair Student Center Patio 10-4pm Tuesday-Thursday.
- Meet the Administration, Wednesday 11:45-1pm Free Watermelon.
- Square Dance, Saturday Night 8 pm, Student Center Ballroom - Free Admission.

**Gene Cotton in Concert**

Thursday, September 13th, 1979

Tickets \$5.00

Student Center Ticket Window, by 203 S.C. Limited Number Available

**Fall Semester Calendar/datebooks**

Now available at the ticket window outside 203 Student Center, only \$1.50

**Fall Film Schedules**

Available Room 204 Student Center

**This Weeks Films**

Monday Aug. 27

- "Casablanca" 7 & 9 pm
- "King of Hearts" 7 & 9 pm

Wednesday Aug. 29

- "Singing in the Rain" 7 & 9 pm
- "East of Eden" 7 & 9 pm

Friday Aug. 31

Saturday Sept. 1

Sunday Aug. 2

- "Midnight Cowboy" 7 & 9 pm

Friday Aug. 31

Saturday Aug. 1

- "The Graduate" 11 pm

**AUGUST**

**29 WEDNESDAY**

- Classes Begin.
- Bid night all Greek Pledge Ceremonies.
- Late Registration P.O.T. Mezzanine 8:30-4pm. Beginning today a \$20 late registration fee will be assessed to students.
- SCB Movie: Singing in the Rain, SC Theatre, 7 pm. Adm. \$1.00.
- SCB Movie: East of the Eden, SC Theatre, 9 pm. Adm. \$1.
- Bookstore will be open, 8am-9pm.
- Student Health Service-Blue Cross/Blue Shield, 8:30am-4:30pm, Great Hall.
- General Telephone Co., SC Rm: 111 & 113, 8:30-4:30pm.
- Tuition and other Fee Payments, Ballroom 9am-3pm.
- Student Center Locker Rental, 9am-4pm, SC Rm 209.
- Parking Permits: C-2 and R, Art Gallery 8:30am-12N, SC.
- Student Center Board Activities Fair, SC Patio, 10am-4pm.
- Watermelon Cut, SC Patio, 11am-1pm. Meet the Administration!
- Late Registration: Wednesday and Thursday, Aug. 29 and 30, 8:30am-4pm. Mezzanine of Patterson Office Tower. Fee payment for all late registrants Sept. 10 & 11. \$20.00 fee for late registration.
- Add-Drop - College of Arts and Sciences in Buell Armory (today only). Students in all other colleges go to the Dean's Office of the respective college.
- LTI Registration in Oswald Bldg., lower foyer 9am-6pm. (Fee payment Student Center Ballroom 9am-3pm).
- Watermelon Cut, SC Patio, 11am-1pm. Meet the Administration!

**30 THURSDAY**

- Open Rush Begins for Sororities.
- SCB Movie: East of Eden, SC Theatre, 7pm. Adm. \$1.
- SCB Movie: Singing in the Rain, SC Theatre, 9 pm. Adm. \$1.
- Bookstore will open, 8am-9pm.
- Student Health Service-Blue Cross/Blue Shield, 8:30am-4:30pm, Great Hall.
- General Telephone Co., Rm 111 & 113 SC 8:30-4:30pm.
- Parking Permits C-2 and R, Art Gallery, 8:30am-12N.
- Parking Permits, Art Gallery, 1-4 pm.
- Tuition and Other Fee Payments, Ballroom, 9am-3pm.

**31 FRIDAY**

- Late registration (thru Sept. 5), Miller Hall rm 204, 8:30-4:30pm. \$20 late registration fee is in effect.
- SCB Movie: Midnight Cowboy, SC Theatre, 7pm & 9pm. Adm. \$1.
- SCB Movie: The Graduate, SC Theatre, 11 pm. Adm. \$1.
- Bookstore will be open, 8am-9pm.
- Student Health Service-Blue Cross/Blue Shield, Great Hall 8:30am-4:30pm.
- General Telephone Co, Rm. 111 & 113 SC, 8:30-4:30pm.
- Parking Permits, Art Gallery, C-2 and R, 8:30am-12N.
- Parking Permits, Art Gallery, 1-4pm.
- Parking Permits, Art Gallery, 1-2:45pm.
- Tuition and Other Fee Payments, SC Ballroom 9am-3pm.
- Student Center Locker Rental, SC 209, 9am-4pm.
- SCB Activities Fair, Patio, 10am-4pm.
- Late Registration, Friday, Aug. 31 through Wednesday, Sept. 5, Miller Hall 8:30am-4:30pm. \$20.00 fee for all late registrants. Fee payment for all late registrants is Sept. 10 & 11.
- Add-Drop: Dean's Office of the students' respective college.
- LTI Registration in Oswald Bldg., 8:30-4:30, Rm. 210 (Fee payment Student Center Ballroom 9am-3pm).

**SEPTEMBER**

**1 SATURDAY**

- SCB Movie: Midnight Cowboy, SC Theatre, 7pm & 9pm. Adm. \$1.
- SCB Movie: (Late Movie), The Graduate 11pm, SC Theatre, Adm. \$1.

**2 SUNDAY**

- SCB Movie: Top Hot, SC Theatre, 2pm. Adm. \$1.
- SCB Movie: Midnight Cowboy, SC Theatre, 7pm & 9pm. Adm. \$1.

**Where To Go After The Dust Has Settled** (Beginning Sept. 4, 1979)

**Payment of Tuition and Fees** (Including \$18.00 Health Fee)

Billings and Collections Office 7-2906 Room 220, Service Building 8am-3:30pm, M-F, including noon hour. If fees are not paid by Sept. 12 registration will be canceled. Refund period is Sept. 13-21, with payment of \$50.00 refund fee and full registration fee. Deadline for paying health fee is Sept. 12.

**Meal Cards** (New and Replacements)

If no prior contact has been signed student must first go to the Housing Operations Office (See paragraph below) Director of Food Services 8-4111, Food Storage Building (8am to 4:30p) Ballroom-M-F.

**Housing and Dining Payments** (if there are any left)

Housing Operations Office 7-1896 Room 218, Service Building, 8am-12 noon & 1pm-3:30pm, M-F.

**Student Parking Permits**

Public Safety Division 8-7127 Room 101, 305 Euclid Avenue (northeast corner of Ross & Euclid) 8am-4:40pm, M-F.

**Blue Cross/Blue Shield Insurance Information and Payment**

Student Health Services 8-6201 - Student Insurance Office, Medical Center Annex No. 4 (on Rose Street across from Med. Center) 8am-4:30pm. Deadline for payment for fall semester Sept. 21, 1979.

**Student Financial Aid**

Student Financial Aid Offices 5th floor, P.O.T. 8-5706 & 8-6008 8am-4:30pm, M-F. Loans and Grants - room 567, 8-8008. BEGG Info - Room 561, 8-5751. Work Study Info - Room 553, 7-5743. LTI Students - Room 516 8-4750.

**Student I.D. and Activity Cards**

Photographic Services 7-2821 Open Only At These Hours Mon. (except Labor Day) 1:15-4:15pm, Thurs 8:15-11:45am. If no I.D. picture has been made (new students only) - Fri. 1000K Kastle Hall. Person must have paid fee slip or be on mail payment print out. ID will be validated and Activity Cards issued at same time. Deadline Sept. 12 after that \$5.00 replacement fee. Replacement of Lost ID or Activity Card check first at the Assoc. Dean of Students Office 275 P.O.T., where all lost IDs are to be turned in and filed. If not located, go to Rm. 200K Kastle Hall. \$5.00 will be collected for ID replacement & second \$5.00 collected if Activity card is to be replaced. Pictures taken in Rm. 200K, cards will be issued and validated. Proof of fee payment necessary (either fee payment slip or name on latest printout). A student should go to the Registrar's Office ONLY if: 1. Change in status from full-time to part-time student or vice versa. 2. Name change due to marriage or legal action. 3. Error on the original (incorrect spelling, wrong social security).

**Freshman Registrar Distribution**

To be mailed directly to students at their home address from printer. Refer questions regarding the Freshman Registrar to Student Center Program Office, Room 203 S-8667.

**Student Center Lockers** - for Individual Students

S.C. Director's Office, Room 209, 9am-4pm M-F. Locker will be assigned with a deposit of \$5.00. Refund will be made when key is returned, less \$1.00 for each semester locker is used. Lockers to be renewed at beginning of each fall semester. No refund will be made if the key is lost.

**Coliseum Pool And/Or Seaton Center Campus Recreation Lockers**

Pay \$2.00 to Office of Billings and Collections in the Service Building. A \$5.00 fee is made if towel service is desired. Take receipt for payment to Coliseum Pool and/or Seaton Center where a locker will be assigned. The same receipt entitles holder to a locker at both places if this is desired.

**Football Game Tickets**

Student tickets - will be available with full-time ID and Activity Card on the Mon. and Tues. before the home game. Contact the Kernel for specific information for each game. Spouse Tickets - Total book for 5 home games may be purchased for \$20.00 (cash only) at the Coliseum Main Ticket Office inside the Lexington Ave. ground floor entrance from 9am-4pm 1st floor Aug. 27. A copy of a marriage certificate must be presented at the time of purchase along with a valid ID and Activity Card.

**Check Cashing Service**

Complex Central Facility - 8am-3pm, 3rd floor of Central Facility. Service is limited to residents of Complex, Donovan and Hagerman Halls. Limit \$50.00 - 10th semester charge for each check cashed. 7-2890 Student Center - 8:15am-3:45pm, M-F. Current validated Student or Faculty staff ID card is required. Limit is \$50.00 per day and 10th semester fee for each check cashed. Rm 213 S.C. 8-8781.

**Student Center Bookstore**

Open 8am-5pm starting Sept. 4, M-F 8-4731.

**General Telephone Co.**

Room 111 & 113 through Sept. 7 to accept applications and receive payment for off-campus service and credit cards for dorm residents.

**Central Kentucky Concert and Lecture Series (CKCLS)**

Full-time students with ID & Activity Card may attend free. Spouse Tickets Sept. 28, 209 Student Center \$5.00 upon presentation of spouse ID and some identification showing relation. Regular season tickets for faculty and staff \$15.00.

# arts & entertainment

## CKCLS, unique among series, is offering another season of sounds, dance, lectures

By MARK GREEN  
Copy Editor

Simply being a full-time student at UK or Transylvania University entails membership in the largest concert and lecture series of its kind in the United States.

The Central Kentucky Concert and Lecture Series (CKCLS) is "one of the oldest and most prestigious in the country" said Mrs. Burton Milward, secretary of the series for the past 14 years.

Full-time students are members of the CKCLS by virtue of the activity fee included in their tuition payment. Only members may attend the events. Students must show their UK or Transylvania ID card and present their activity card, which are punched in the same manner as they are for obtaining football or basketball game tickets.)

The series has operated in its present form since 1950 when Memorial Coliseum opened, providing a site for the events. At that time the Lexington Forum, the Central Kentucky Concert Association and UK collaborated to form the Central Kentucky Concert and Lecture Series.

The Lexington Forum was a lecture series that brought in speakers of interest to the community, while the Central Kentucky Concert Association had been bringing in top quality music acts for concerts since it was founded in 1932.

The CKCLS sponsors "high quality professional entertainment at a reasonable price... to enhance the cultural and educational atmosphere of the community," said Brett Cochrane, a representative of Community Concerts, a concert service organization from New York.

Community Concerts works with the Talent Selection Committee of the CKCLS to book the various groups and individuals who eventually appear.

In addition to students, memberships are sold to the public at \$15 apiece. (Memberships are available to spouses of a full-time students for \$5.) Cochrane said approximately 5000 memberships are purchased each year, principally by people in Lexington, but some members come from 50-100 miles away.

Actually, Cochrane said, if all of the members of the CKCLS showed up for one of the events there would not be enough room to seat everyone (Memorial Coliseum holds 11,500). So far that has not been a problem because student turnout is usually low, he said. Students attend the symphony orchestra shows in the largest numbers, said Milward.

Over the years some of the best symphonies in the world have appeared as part of the CKCLS, Cochrane said. He explained that after participating in the CKCLS, a group will include that fact in their promotional materials.

"It's a real feather in their cap to appear here," Milward said. Among those who have appeared in previous seasons are Beverly Sills, famed operatic singer, the New York Philharmonic, which rarely makes appearances away from its home, according to Cochrane; the Pittsburgh Symphony; Duke Ellington; the Budapest Symphony Orchestra and the Royal Winnipeg Ballet.

A ballet is usually included in each season's program, Cochrane said, and for the 1979-1980 CKCLS Les Grands Ballets Canadiens will appear (Jan. 29 at 8:15 p.m.).

Other acts scheduled for this season are:

— The Chinese Acrobats of Taiwan, who have added magic and illusion to their program of gymnastics and acrobatics.

They appeared in the CKCLS during their last tour of the U.S. (Oct. 25)

— The Fred Waring Show will present their "Best of Best" show of classic and popular choral music. (Oct. 29)

— John C. Sawhill, president of New York University and Deputy Secretary of Energy in the Carter administration, will lecture on the energy situation. (Nov. 8)

— The Dresden (Germany)

Staatskapelle Orchestra, the oldest orchestra in the world, was the orchestra of Richard Wagner and Richard Strauss. (Nov. 13)

— The Prague Chamber Orchestra with piano soloist Hans Richter-Hasser (Nov. 29)

— Hedrick Smith, an authority on the Middle East, Southeast Asia and diplomatic affairs in Washington, and a Pulitzer Prize winner. (Dec. 4)

— Joseph J. Sisco, president of American University in

Washington, served as an Under Secretary of State under Henry Kissinger and negotiator in the Arab-Israeli disputes. (Jan. 23)

— Eugene Fodor, past winner of the Tchaikovsky Competition in Moscow, is considered to be one of the finest violinists now playing. He has played with many of the major symphony orchestras and is a frequent guest on several national talk shows. (Feb. 15)

— Marshall Loeb, editor of Time magazine's Business, Economy and business section. (Feb. 26)

— Theodor Uppman and Eleanor Berquist, a baritone with the Metropolitan Opera and the leading soprano of the New York City Opera, in a joint operatic concert. (March 4)

— The Trimburtzan Dancers and Singers, an ethnic dance company from Duquesne University. (March 28)

## On Tap

an advance on artistic happenings

Welcome back, campers. Now that your pockets are lined with the cash made at that fabulous (if you were lucky) summer job, all the equipment needed to celebrate the coming season of entertainment in style is at your fingertips.

If, however, summer did not produce the gold bonanza you had prayed for, don't despair. Although bargains are not the word of the day in the entertainment world, they can be found lurking in the shadows.

BEST BETS: A weekend of solid stage presentations produced by UK Theatre beginning Thursday, Sept. 6 and running through Sunday, Sept. 9, and a week of classic (read good) films at the Student Center Cinema for only \$1.

EDITOR'S NOTE: All times listed are p.m. (after noon) unless otherwise noted.

### cinema

At the Student Center for \$1 each: **Singin' in the Rain** (7) and **East of Eden** (9). Thursday: **East of Eden** (7) and **Singin' in the Rain** (9). Friday and Saturday: **Midnight Cowboy** (7 and 9) and **The Graduate** (11). Sunday: **Top Hat** with Fred Astaire and Ginger Rogers (2) and **Midnight Cowboy** (7 and 9). Monday: **A Boy and His Dog** (5). Tuesday: **Performance** starring Mick Jagger (7) and **A Boy and His Dog** (9). Wednesday, Sept. 5: **Day of the Locusts** (6) and **Butley** (8:30). A complete semester schedule is available at Student Center Board office in the Student Center.

At the Kentucky Theatre, 214 E. Main St., for \$1.50 each: Today: **Top Hat** (1:30 and 7:30) and **Woodstock** (9:30). Thursday: **Top Hat** (1:30 and 7:30) and **Old Boyfriends** (9:30). Friday: **Brother Sun and Sister Moon** (1:30 and 7:30), **Casablanca** (9:40) and **Superman**, \$1 midnight show. Saturday: **Brother Sun and Sister Moon** (1 and 3), **Hair** (5), **It Happened One Night** (7:30), **Hair** (9:30) and **Superman** \$1 midnight show. Sunday: **Superman** (2 and 4:45), **It Happened One Night** (7:30), **Casablanca** (9:30) and **Hair** special \$1 midnight show. Monday: **Casablanca** (1:30), **It Happened One Night** (7:30) and **Superman** (9:30). Tuesday: **It Happened One Night** (1:30), **Casablanca** (7:30) and **The Buddy Holly Story** (9:30). Wednesday, Sept. 5: **Old Boyfriends** (1:30 and 9:30) and **The Buddy Holly Story** (7:30). A complete schedule through Oct. 10 is available at the theatre. More information available at 254-6010.

### theatre

At the Guignol Theatre in the Fine Arts Building: Running the weekend of Sept. 6 through 9, the UK Theatre companies of **Charlie's Aunt**, **You're A Good Man Charlie Brown**, **Vanities** and **Wait Until Dark** will encore their productions from the 1979 Summer Theatre Festival. Performance times and ticket information available at the theatre.

## TRANSFER STATION

T-Shirts & Jeans at Student Prices  
—Back to School Sale—

- 1/2 off All Jeans
- 1/3 off All T-Shirts
- 2/3 off Remaining Jackets/Vests/Skirts

Bring this coupon to the Transfer Station, 445 S. Ashland in Chevy Chase between Fred Moore Music and Tenth Gear. (Look for the H&R Block sign) and purchase any UK T-shirt for \$2.95. Offer good Fall Semester 1979.

**SPECIAL SALE!**

10 gallon aquariums \$8.88 limit 2  
Challenger 1 pump \$5.85  
100 watt heater \$5.75

FROZEN FISH FOODS  
TROPICAL & MARINE  
FISH  
SMALL  
ANIMALS  
PET SUPPLIES

**WITH THIS COUPON  
10 PER CENT OFF  
ON ALL AQUARIUM  
EQUIPMENT**

**Pet Gallery**

Mon.-Fri. 11-8:30 Sun. 12-5  
Sat. 10-8:00 266-7113  
in the Lansdowne Shops

RAIN CHECKS AVAILABLE GOOD THRU SEPT. 30

information at the Guignol Theatre box office, 258-2680 or 257-2797. Other productions by the UK Theatre company in the 1979-80 season will be **Something's Afoot**, **Tartuffe**, **Camino Real**, and **A Man For All Seasons**. Other UK productions and an Actor's Theatre of Louisville performance will be announced later in the year.

At the Lexington Opera House, 301 W. Short St.: The Broadway Nights season will begin Nov. 8-10 with **Show Boat**. Other shows are **Da**, Dec. 6-8; **Eubie**, Jan. 24-26; Leslie Nielsen in a one-man show as **Clarence Darrow**, Feb. 28-March 1; **Deathtrap**, March 20-22; and **Ain't Misbehavin'**, May 15-17. Seat price information available at 233-4567 or 233-3565.

### concerts

At Rupp Arena: **Rush** and **Pat Travers**, Wednesday, Sept. 5 at 8. Tickets are \$8.25 and \$7.25 at the Lexington Center Box Office, McAlpins and The Disc Jockey.

At the Lexington Opera House, 301 W. Short St.: **Don McLean**, Saturday, Sept. 8 at 8. Ticket information at the Lexington Center ticket office.

At the Student Center Ballroom: **Gene Cotton**, Thursday, Sept. 13 at 8. Tickets are \$5, available from 10 a.m. to 4 p.m. at the SC ticket window.

At Riverfront Coliseum, Cincinnati: **The Doobie Brothers** and **Night**, Friday at 8. Tickets are \$7.50 in advance, \$8.50 on day of show (DOS). **Kiss**, Friday, Sept. 14 at 8. Tickets are \$9. **Cheap Trick** and **The Ian Hunter Band** on Sunday, Sept. 23 at 8. Tickets are \$8.50 and \$7.50. Tickets available at Ticketron at Shillito's in the Fayette Mall.

At Freedom Hall in Louisville: **The Doobie Brothers** and **Night**, Saturday at 8. Tickets are \$7.50 in advance and \$8.50 DOS. "Five For Five," a combined show featuring Sun, Con-Funk Show, Mass Productions, Roy Ayres, and McFadden and Whitehead, Sunday at 7. Tickets are \$5 for the first 2500 and \$7.50 for the remainder. **Kiss** and **Judas Priest**, Sunday, Sept. 16 at 8. Tickets are \$10. Tickets available through Ticketron.

**Jim Barrett**  
B.H.F.C. Member




"FOR YOUR HAIR"

278-7591  
278-7711

**GARDEN PLAZA SALON**

1811 ALEXANDRIA DR. 9-5 DAILY  
(Behind Gardenaide Pharmacy) Thurs. Evenings



**GET IN SHAPE  
STAY IN SHAPE!**

"TRY US OUT FOR KICKS"

Call about our Student Rates  
in Tae-Kwon-Do

The Lexington Karate  
Academy

414 VILLAGE DRIVE  
LEXINGTON, KY 40504  
**255-9335**

**FARMHOUSE  
FRATERNITY**  
"Fall Rush 1979"

Wed. Aug. 29 - Live Band

Thurs. Aug. 30 - Jim Taylor Disco

Fri. Aug. 31 - "Smoker"

Mon. Sept. 3 - Homemade Ice Cream

Tues. Sept. 4 - Cook Out

Wed. Sept. 5 - Formal Dinner by Invitation

Come See Us!  
420 Hilltop Avenue 257-3341

**MOVED  
OR HAD  
PHONE NUMBER  
CHANGED?**

Address and phone number  
change can be made  
**August 27 - August 31**  
**8 a.m. - 4 p.m.**  
**Student Center  
Great Hall**

changes made at this time  
will be included in this Fall's Phone  
Directory!

Enter America's  
largest college  
photography contest.

seventh annual  
**NIKON/NUTSHELL  
PHOTO CONTEST**

If you're a student or faculty member, you could win one of 149 prizes totaling \$11,250. It's all made possible by Nikon, the most preferred camera on college campuses.

Submit black and white or color—there's no limit to the number of shots. Nikon will even return your photos, if you wish.

**How to Enter**  
Come by and pick up an official entry form and details. Also get a copy of *The Beginner's Guide To The Single Lens Reflex Camera*. It contains 52 pages of great picture-taking hints...free for the asking.

Gardenaide Plaza  
1759 Alexandria Drive  
Lexington, Kentucky 40504  
278-0704

**FAYETTE FOTO**

**WEDNESDAY**

**TGIW**  
ladies nite

- \*All drinks 75¢ (5-8)
- \*WQQQ buys the ladies drinks (8-9:30)
- \*All ladies drinks 50¢ (9:30-1)

at the  
**LIBRARY**  
University Plaza  
Euclid at Woodland  
254-8127

**Kernel classifieds work**

**After plane's 73-hour delay**

**Vlasova's government accuses United States of plotting; Bolshoi ballerina says detaining plane was 'madness'**

By NIKKI FINKE  
Associated Press Writer

MOSCOW — Bolshoi ballerina Ludmila Vlasova stepped from a long-overdue jet into the arms of her weeping mother on Tuesday, then told interviewers her 73-hour delay at Kennedy Airport was "madness." Her government accused the United States of "anti-Soviet" plotting.

Crowded by reporters and security men, the 36-year-old brunette walked from the plane at Sheremetyevo Airport, embraced her mother and said: "Please, Mama, don't cry, I'm back."

Later, Miss Vlasova said in an interview broadcast on Moscow radio: "I consider the U.S. authorities at a meeting Monday night she was returning to Moscow of her own free will. Convinced of that, U.S. authorities allowed the aircraft to leave three days late."

"I am very happy that I set foot back on native soil," said the dancer, who convinced U.S. authorities at a meeting Monday night she was returning to Moscow of her own free will. Convinced of that, U.S. authorities allowed the aircraft to leave three days late.

A statement published by the Soviet news agency Tass quoted Miss Vlasova as saying her ordeal was "an act of brutality" organized by people wanting "to worsen Soviet American relations."

The Soviet media failed to report that her husband, Bolshoi star dancer Alexander Godunov, had defected last Wednesday, setting off the chain of events that ended with her arrival home.

Tass' only reference to her husband was a statement that Miss Vlasova "did not want to find herself in a situation ... who had disappeared shortly before that under circumstances which are not yet clear."

Miss Vlasova refused to comment about her husband, but she did praise the Soviet government, saying that "I felt all the support I needed" from her relatives and countrymen.

Tass accused U.S. authorities of lacking "responsibility and common sense" throughout their dealings at Kennedy Airport and of planning an

international incident between the two nations.

"It would seem that if the U.S. authorities had any questions for anyone of the passengers or the crew of the plane, these questions could have been asked during the usual formalities before the flight," Tass declared.

"But the script of the provocation was planned in a different way. Its authors sought a scandal. They hoped for a noisy anti-Soviet sensation," the statement said.

"I am very tired, of course," Miss Vlasova told a Western reporter after her nine-hour flight here. She was driven off in a sedan without customs formalities.

At the airport, the 52 other passengers aboard the Aeroflot Ilyushin-62 jetliner said the atmosphere inside the craft at Kennedy Airport was warm

and tense while negotiations dragged on outside.

Passengers said they held a chess tournament and put on "very jolly" amateur entertainments while Miss Vlasova roamed the aisles

freely, joining in their songs and even signing autographs.

The passengers said they all were aware of Godunov's defection because they read about it in New York newspapers.

**TARANTULAS**

**\$9.95 Up**

**FISH BOWL/BEST PETS**

1817 Alexandria Dr.  
Gardenside Shopping Center  
277-0003



Expires Sept. 9th

**TONIGHT AT THETA CHI...**

**"Southern Flame Night"**

Come on over and enjoy some real Southern Hospitality!

Fun Starts at 8:30 pm

Theta Chi  
509 East Main  
255-4813

**Village Barber Shop**

Professional Hairstyling for Men and Women

All the Latest Cuts and Styles  
Permanents

9-6 Mon.-Fri. 2189 Versailles Rd.  
8-5 Sat. 255-6762

**SIGMA NU FRATERNITY**

Presents on . . .

Wed. Aug. 29 - DISCO DANCE  
Thurs. Aug. 30 - CASINO PARTY  
Fri. Aug. 31 - PASSION PARTY

Featuring **"RAEL"**

9:00 each night!  
422 Rose Lane

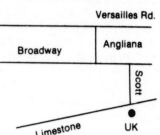
3 doors down from Newman Center

**BILLY FUDPUCKER'S**

"Have A Party At Our Place"

Nightly Favorite Super ENTERTAINMENT BEVERAGES SANDWICHES

5 Blocks from U.K.



1130 Versailles Rd.  
252-9255  
7 am-12 pm Mon.-Sat.

**KENTUCKY Kernel**

third largest morning daily in Kentucky

**The KERNEL -- Just for YOU**

Start YOUR day with ALL the information.

Pick up a copy of the award winning *Kentucky Kernel*.

Get the info on the Cats and intramurals, campus events and concerts, pick a movie, plan a shopping trip, check out the national, international and state news, read national columnists, see letters from your friends about campus concerns, learn more about the 35,000 person UK community.

It's all in the *Kentucky Kernel* Monday through Friday. Don't miss an issue. Complete news and views--JUST FOR YOU.

Serving you better this fall with 57 convenient locations on campus and in Lexington. Look for the blue rack and start YOUR day with ALL the UK News.

**Kernel Locations**

HOME EC.  
LAW  
PHARMACY  
MORGAN  
DONOVAN  
K-LAIR  
FUNKHOUSER  
CHEM/PHYSICS  
FINE ARTS  
SAFETY  
SECOND NATIONAL  
MEMORIAL COLISEUM  
JEWELL  
HOLMES  
KEENELAND  
BLAZER  
KENNEDY'S  
SERVICE BUILDING  
DICKEY HALL

MATHEWS  
COMMERCE  
ANDERSON  
WHITEHALL  
AD ANNEX  
ADMINISTRATION  
BARKER  
STUDENT CENTER  
TRANSY  
NURSING  
ANNEX 2  
ANNEX 4  
MED CENTER LIBRARY  
AG MED CENTER SIDE  
TOBACCO RESEARCH  
ES GOOD BARN  
COMMONWEALTH  
SHAWNEE  
FOOTBALL OFFICE

BUS STOP BUBBLE  
LTI  
SEATON  
COMPLEX  
COOPERSTOWN  
JOURNALISM  
KERNEL OFFICE  
MCVEY  
KASTLE  
ARCHITECTURE  
M I KING  
BIG DADDY'S  
KROGER  
CHEVY STORE  
FIRST SECURITY (DOWNTOWN)  
HYATT  
TURFLAND MALL  
FAYETTE MALL  
LEXINGTON MALL





## You go that way

New UK backfield coach Charlie McCullers points out some instructions to freshman running back Thomas Venable of Somerset during football practice yesterday.

## Pastore wins third Reds move to first place after 5-2 win over Phillies

PHILADELPHIA (AP) — Joe Morgan, Ray Knight and Dan Driessen hit home runs off Steve Carlton last night to carry the Cincinnati Reds to a 5-2 victory over the Philadelphia Phillies.

Coupled with the Montreal Expos 7-4 win over the Houston Astros, the victory moved the Reds into first place in the National League West.

Rookie Frank Pastore, with relief help from Tom Hume, gained his third victory against six losses as the Reds won their seventh straight game. Carlton's record dropped to 13-11.

Garry Maddox put the Phillies in front with his 12th home run of the season in the

second inning. Cincinnati tied the game when Morgan opened the fourth with his eighth homer.

Knight homered leading off the fifth inning, his eighth of the year, to put the Reds in front again, 2-1.

Cincinnati scored three more times before Carlton got an out in the sixth. George Foster started things with a walk and

went to third as Johnny Bench doubled down the left-field line. Driessen followed with a three-run blast, his 15th homer of the season.

Pastore gave up only five hits in 7 2-3 innings while striking out three and walking one. Hume picked up his 11th save.

## NAUTILUS Welcome Back Students!

### 50% OFF

(Any one or two year membership with this ad)



Complete Nautilus Facility

22 Machines

Complete Olympic Weight Room

197 MOORE DRIVE (Behind Steak & Ale)  
278-5495



LEXINGTON NAUTILUS

## Look Below For Good Buys

### Rates

**CLASSIFIEDS**  
One day, \$1.00  
Three days, 95 cents per day  
Five days, 90 cents per day

The above rates are for ads of 10 words or less, there is an additional charge of 12 cents for each extra word per day

### 258-4646

is the number to call for information about the best read bulletin board on campus, the Kernel Classifieds. The deadline for classified ads is noon. One day prior to the day of publication.

The Kernel Classified office is located in room 210 of the Journalism Building on campus. All ads must be paid in advance

# classifieds

**Everybody's Bike Shop**  
212 Woodland Ave.  
233-1764  
New & Used Bicycles  
Full Service - All Makes

### for sale

- 1971 VW BEETLE (73 engine) good condition \$1600 Call 277-7457 between 9-6. 29A31
- 24' MENS 18 SPEED (new) \$50 1967 1/2 Bird, good engine body, needs work \$350. Couch and chair \$50. 29A30
- WELCOME BACK** - need inexpensive furniture (used and newly upholstered) appliances, clothing. TRY THE VOLUNTEERS OF AMERICA next to the Southern Railway Station at 669 South Broadway. 29A29
- GARAGE SALE** - 672 Sheridan Dr. Lots of furniture, antiques, finished and rough dishes, household items, misc. 1971 VW Beetle, Saturday, Sunday, Monday. 29A31
- MENS WETEN** - SPEED-bike for sale. \$55 call 266-007. 29A30
- BEER SERVICE** - Big Daddy Liquors, 372 Woodland Avenue.
- TELEVISIONS** - Zenith 25" color \$150.00 19" B & W \$55 277-8516 evenings. 29A31
- FULL SIZE MATTRESS** - Box springs and frame \$100 278-6683. 29A31
- TWIN BED** - Box Springs and mattress maple \$80 253-1927. 29A29
- 1974 GREMLIN X-6 cylinder, great gas mileage. Book price \$1,600 - will sale for \$1,100 call 284-4874 after 9pm call 273-7772. 29A31
- 1978 FORD FAIRMONT FUTURA - 18,000 miles, 2mpg, automatic, air, vinyl top \$495 call 272-5310. 29A31
- DUPLEX** in NICHOLASVILLE - owner financing \$6,500.00 down payment rent pays \$150.00 per month on principle 887-1173, 887-1138.
- HOUSES** - Nicholasville Area, owner financing \$5,000.00 down payment. Two properties, many extras 887-1138, 887-1173. 29A55
- BRISSETT PUPPES** - registered shots wormed \$60 278-3646. 29A31

### help wanted

- PART TIME** - Sunday through Thursday Evenings - 7 to 11 pm - night supervisor in Library while school is in session - call 233-8225. 29A30
- ROUTE WORK** - 3 evenings a week good pay for dependable man call 885-8882. 29A31
- BABYSITTER** FOR TWO GIRLS - ages 2 1/2 and 5, Tue & Thursday 11:30am to 5:30pm. Your home or mine. 268-2642. 29A31
- CASANOVA'S PIZZA KING** - is now hiring for full and part time day positions as crew member. Apply anytime at the Fayette Mall. 29A54
- EXPERIENCED SHERIFF** - full or part time position in sales, some nights, primarily days. Apply Phillip Gall & Son, Lexington Mall Location. 29A54
- RESPONSIBLE PERSON NEEDED** - for night manager position Mon - Friday 5pm to Midnight, 21 or over. Apply in person. Lexington Tennis Club 410 Neddling Road. 29A55
- STUDENT SITTER** - earn while you learn. Study or use drafting table while supervising two after school. 277-9027 after 5. 29A31
- HELP IN TOBACCO** - working full or part time. Richmond Road Area. Phone 266-5809. 29A3
- MAINTENANCE WORKER** - immediate part time opening, hours 6 am to 10 am. Experience in floor care in general maintenance preferred, minimum starting salary 3.35hr. Apply in person to Personnel Dept. 2 to 4 pm Monday, Wednesday, and Friday. Montgomery Ward, 2021 Harrodsburg Road, Turland Mall Equid Opportunity - Affirmative Action Employer - Minority - Female - Handicap - Disabled - Veterans - Vietnam Era Veterans. 29A55
- WENDYS ON NICHOLASVILLE ROAD** - is looking for UK students. \$3.00 per hour. We will work with your schedule see Ron Sharkey. 29A31

**BASKIN ROBBINS** - North Park shopping center will hire two at three college students for part time work. Apply at store. Flexible hours. 29A55

**NIGHT AUDITOR** - experience preferred. Apply Best Western Motel 925 Newtown Pike Full time. 29A29

**SECRETARY FULL TIME OR TEMP** - December 31, 1979, must be experienced and excellent typist. call 257-1738. 8a.m. till 4:30 p.m. 29A55

**\$4 PER HOUR** - single parent needs part-time companion for 10 year old son. Weekdays 3-6 pm. Must have car and must be sensitive, funny, bright and athletic - because the boy is References required. Call Wood Simpson, 254-0108 (days) 266-7912 (nights). 29A54

**HOUSE PARENTS** - female residential facility evenings and weekends part-time. 252-8636 29A53

**MEDICAL MODELS** - Needed for physical examination. Instruction appointment required call 233-5752. 29A12

**POSITIONS AVAILABLE** - from 11:00am to 5:00pm, 5:00pm to Close. Good starting wages. apply in person. Arby's 212 Southland Dr. or 2449 Richmond Road. 29A55

**WAITRESSES, WAITERS** - Cocks and Boppers needed. Apply Pombo's, East and Rose Wednesday through Friday between 12:00 and 4:00. 29A31

**HORSE FARMS** - preparing very large confinement for November sales. Need two qualified workers. References required. Hurricane stud Georgetown Pike. No phone calls please. 29A55

### for rent

- WALK UK** - very small but nice furnished two bedroom apartment. Utilities paid. \$210.00 lease deposit. 272-2227. 29A31
- FEMALE GRADUATE STUDENT** OR **TEACHER** - Private bath garage, refrigerator etc. 266-2365. 29A31
- REASONABLE ROOM** - kitchen provided, great walking distance, girls only. 277-9676. 29A29
- NEAR U of K** - one bedroom furnished apartment, dishwasher, no pets, no children. call 278-0375. 29A31
- LARGE MODERN FURNISHED** - 1971-73 with in two blocks of UK \$300.00 per month. Pay own electricity. See at 254 Industrial or call W.B. Company 254-7888. 29A55
- ROOM FOR RENT** - five minute walk from Medical Center. Graduate student preferred. call 233-3830. 29A54



Now Hiring, Day & Night Shifts Positions Available For

- Waiters & Waitresses
- Cashiers
- Car Hops
- Fountain Help
- Dish Washers & Kitchen Personnel

Top pay & above average benefits including hospitalization, paid vacation, training program, meals & uniforms. Experience helpful but not necessary. Must be over 18 except day shift.

Apply in person at:

- 2304 Versailles Rd.
- Idle Hour Shopping Center
- 1927 Harrodsburg Rd.
- 118 E. New Circle Rd.

Between the hours of 8 a.m.-11 a.m. & 2 p.m.-5 p.m. or after 7 p.m.

An Equal Opportunity Employer M/F

**SLEEPING ROOM** - with refrigerator for-living. distance UK. 272-7407 1-987-7053. 29A31

**TWO BEDROOM** - basement efficiency, furnished, in exchange for remodeling, maintenance apartment building. Construction background required. call 277-9749. 29A55

**S-T-U-D-E-N-T Special! T-went** - UK - City. Efficiency, nice, air-conditioned carpeted - 266-S. Line. 9-5. 29A31

**LUXURIUS CONDOMINIUM** - in Lakeshore Village. Two bedroom. Boating, swimming, tennis. Lane Redford to \$495.00 per month. 255-3443. 252-4444. 29A55

**ROOMS** - one half blocks from campus. No pet. 278-4564 after 1pm. 29A31

### roommate wanted

**HELP** - need apt to share quiet nature desperate 233-7806. 29A30

**ROOMMATE WANTED** - Share furnished two bed room apt. on buslines, central air, pool, no lease no deposit. 378-4082 after 7:00pm. 29A31

**ROOMMATE WANTED** - \$160 month furnished utilities included. 266-8728 keep trying. 29A31

### services

- PIANO LESSONS** - all ages, all levels. Experienced teacher with advanced degrees in music. 273-2043. 29A52
- WHITE'S WINDOW CLEANING SERVICE** - Residential, Commercial and Industrial Business. Phone 255-1262 or 255-2257. 29A28
- STUDENTS** - earn better grades with minimal effort. Learn the secrets of the new semester. Tips on reading, studying, note taking, dealing with instructors, and test taking. Send \$4.00 to A.J. Enterprises, Box 27085, Omaha NE, 68127. 29A31
- CHILD CARE** - in my home near UK. Employment 254-4291. 29A31
- GUARANTEED BICYCLE REPAIR** at half price. One day service. 278-2934. 29A29
- GUARANTEED BICYCLE REPAIR** - Half Price. One day service. 278-3934. 29A55
- HOW TO STUDY** - \$1.00 papers. Dpt. K.T. Box 25126 Lexington, Mich. 48099. 29A56
- PHOTOGRAPHIC BLACK AND WHITE** - custom printer. Stone Photography 109 Clay Avenue. 29A31

**FRATERNITY ACTIVES** - Good Luck in fall rush! From the Panhellenic Council. 29A28

**EXPERIENCED AND PROFESSIONAL** - Typing Nancy Jones - 299-6447. 29A01

**WANTED House Boys Alpha Delta Pi**  
Call Mrs. Margan 255-7834

### misc.

**AEROBICS** - Ballet, Belly dancing, jazz, disco, yoga, dance, now registering at She Line, 160 Moore Dr. Small classes, individual attention, call 270-4503 to register. Student Faculty Staff of UK. Discount. 29A30

**PERSONAL DEVELOPMENT COURSE** - 8 week course featuring make up, hair styling, voice and diction, visual, posture, fashion, exercise, personal motivation. To register call She Line, 160 Moore Dr. 276-4503. 29A30

### memos

**VACANCIES IN UK CHORUS** - Come sing in the U.K. Chorus and perform the inaugural concert in the New Fine Arts Building under conductor Robert Shaw. For information contact Sara Holford, 257-1838. Rm. 10, Fine Arts. 29A31

**THE SCHOOL OF MUSIC** - announces two new courses, effective this fall, 1979, which will have openings: 920110 MLC (164.00), Class Instruction in Guitar, 1 Credit Hour, 1R 900-9 50m FA 22 Kelly, 919870 MUS (174.00) Theory for Non-Music Majors, 3 Credit Hours, MW 8:30-7:45pm FA 17 Miller. 29A31

**Kernel Ads Work**



### Tired of the Same Old Shift

Fridays could be for you! We are a New Antique Bar and Restaurant and have a limited number of positions available in the following areas:

- Bussers
- Dishwashers
- Cashiers
- Food Expeditors
- Line Cooks

If you are going to work! Why not work for the Best! Please apply in person

T.G.I. Friday's  
3220 Nicholasville Road  
South Park Shopping Center, 2pm-4:30pm



## At Sigees, We're Looking Goooood!

In fact, Sigees is looking so good, we're looking for help. Business is great at Lexington's Hospitality Inn. And it's even greater since we opened our second new restaurant, the 24 Hour Refreshery. If you're looking for a very satisfying job in the restaurant or lodging business, look here. We offer excellent pay, liberal fringe benefits and flexibility in working hours. Plus, we'll be happy to train you.

Apply in person at:



AT HOSPITALITY INN  
2143 N. Broadway 299-1261

## SAVE ON CLASSIFIEDS

75 cents one day 10 - words with this coupon

Good until September 30, 1979

# KENTUCKY Kernel

## Classified Ad Form

Print your want ad or personal here:

Personals  For Sale  Help Wanted  Services  Lost and Found  Wanted  For Rent  Other

Dates you want your ad to run

See the top of classified section for rates.

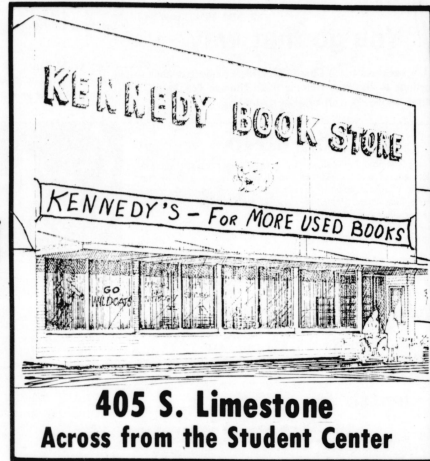
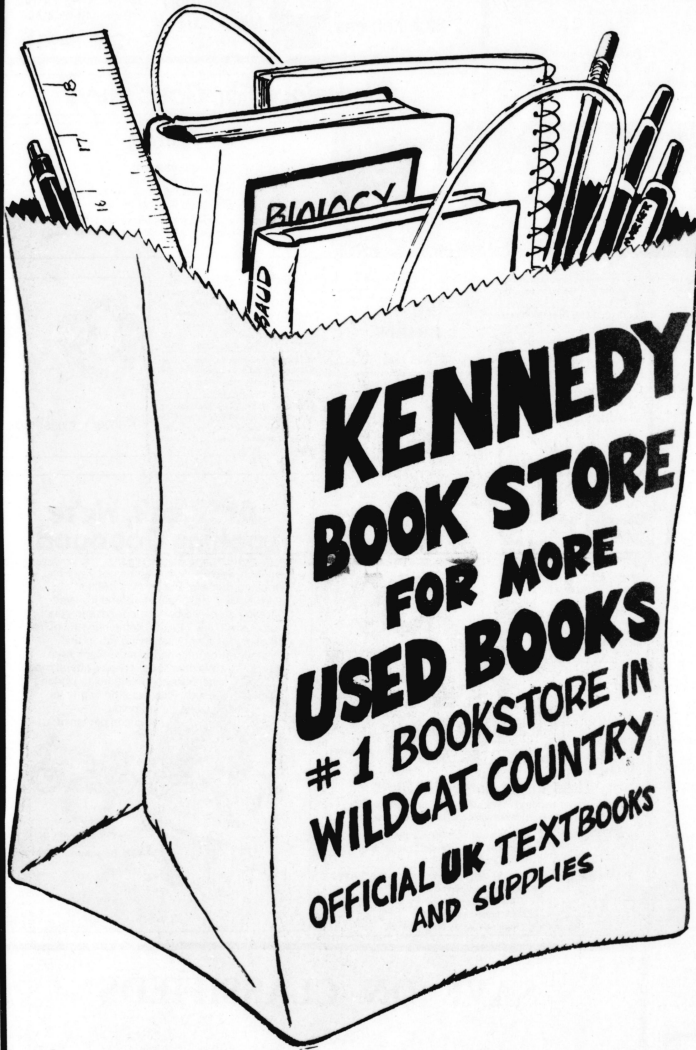
Make your check payable to *The Kernel Press, Inc.* Mail it with this form or bring it by our office, Rm. 210, Journalism Bldg. All classifieds must have payment in advance.

Your name: \_\_\_\_\_  
Campus address: \_\_\_\_\_  
Phone number: \_\_\_\_\_

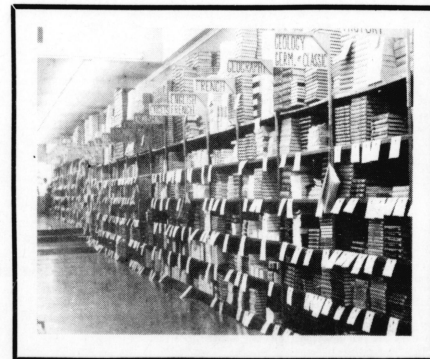


# KENNEDY BOOK STORE

**YOUR NO. 1 BOOK STORE IN WILDCAT COUNTRY!**



**More students by far  
Buy at Kennedy's  
We will be happy to  
cash your checks  
and money orders!**



- KENNEDY'S HAS MORE!**
- ✓ **MORE** notebooks (for better note taking)
  - ✓ **MORE** study aids and outlines (for better grades)
  - ✓ **MORE** UK shirts (for gym or pleasure wear)
  - ✓ **MORE** health and beauty aids
  - ✓ **MORE** UK novelties and souvenirs (for that UK spirit)
  - ✓ **MORE** space (the largest bookstore at UK)
  - ✓ **MORE** check-out lanes (for faster service)
  - ✓ **MORE** EXPERIENCE (29 years at UK)
  - ✓ **MORE** art, architecture and engineering supplies
  - ✓ **MORE** paperback books (for required or leisure)

**If saving money  
is your bag . . .**

**Be sure to  
get ours!**

