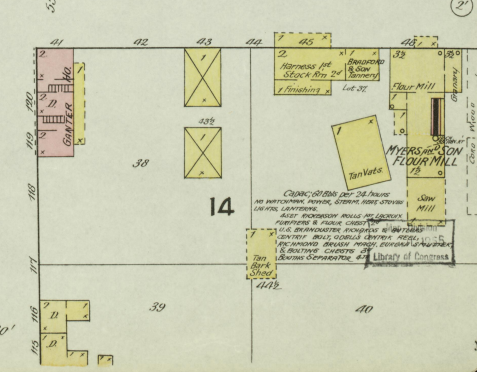
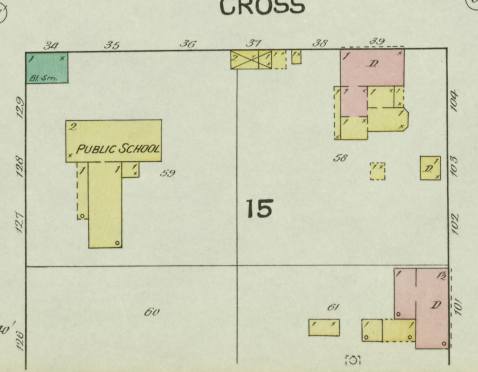
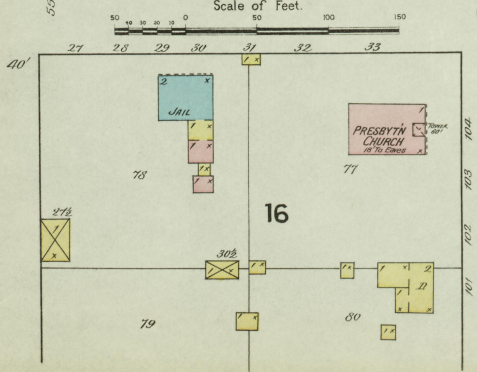
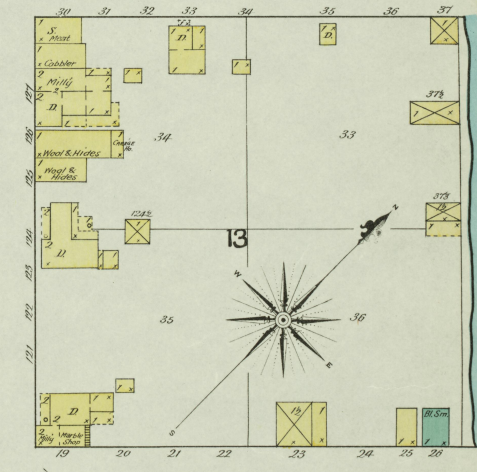
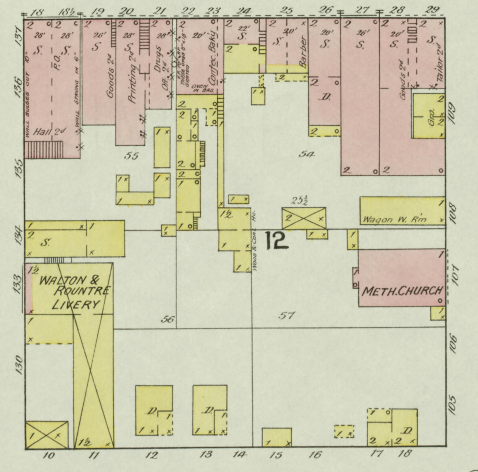
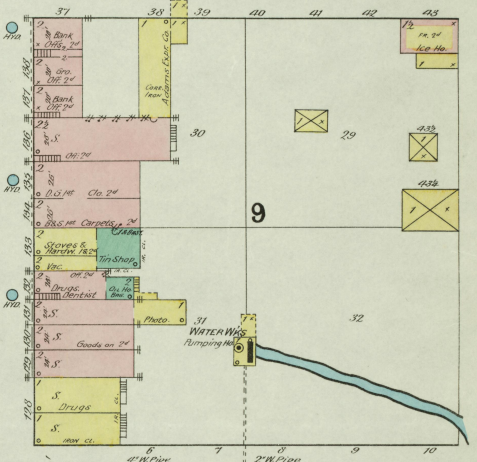
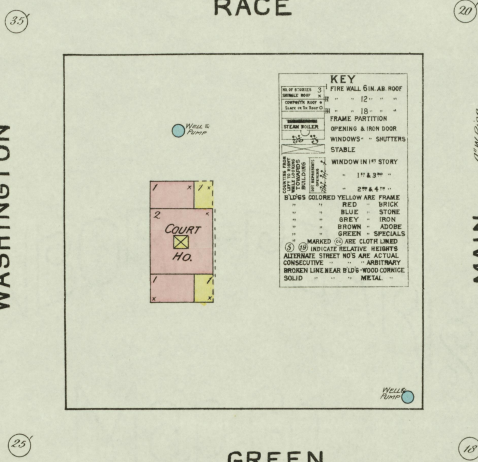
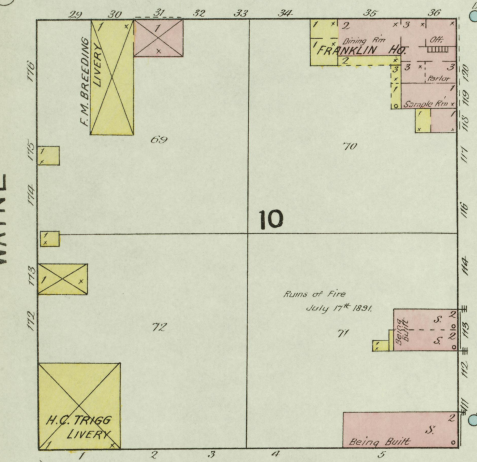
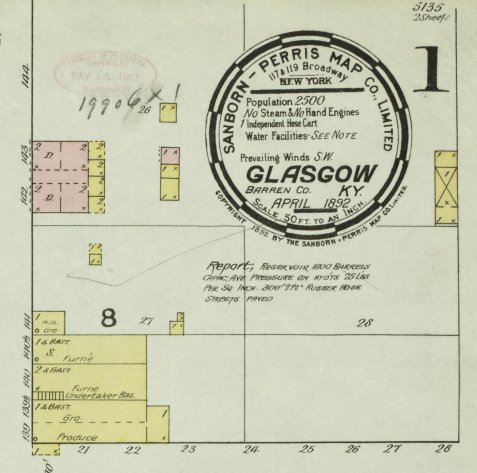
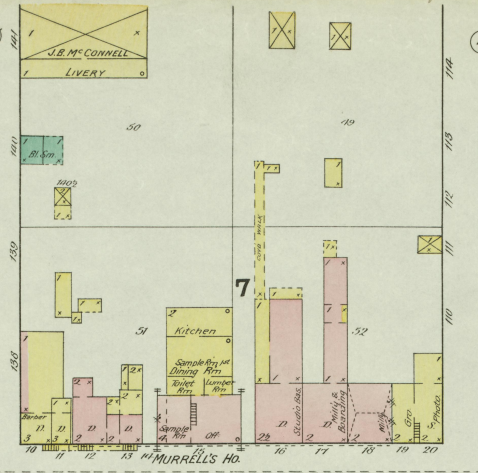
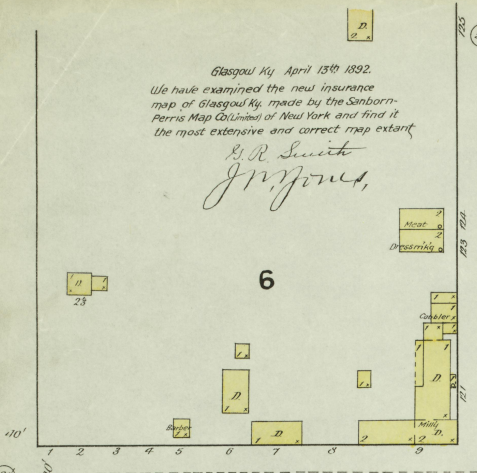


Glasgow Ky April 13th 1892.
 We have examined the new insurance
 map of Glasgow Ky made by the Sanborn
 Parris Map Co (Limited) of New York and find it
 the most extensive and correct map extant

R.R. Smith
J. Jones



Report: Block with 1800 BARREN
 CIVIC: FIRE PRESSURE ON WINDS S.W. List
 Fire 50' HIGH 300' DIA. RAILROAD HOUSE
 (SEE NOTE)



RACE

GREEN

CROSS

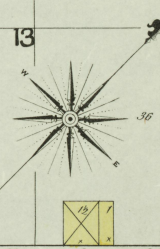
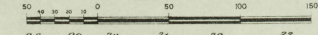
WAYNE

WASHINGTON

MAIN

SEE

Scale of Feet.



MYERS & SON FLOUR MILL
 LIBRARY OF CONGRESS

