

Bulletin of the

UNIVERSITY OF KENTUCKY



SUMMER SESSION

1948

June 18 to August 14

Published monthly, January to September inclusive, by the University of Kentucky, Lexington. Entered as Second-Class Matter at the Post Office, Lexington, Ky., under the Act of July 16, 1894.

Acceptance for mailing at special rate of postage provided for in Section 1103, Act of October 3, 1917, authorized June 30, 1920.

Vol. 40

APRIL

No. 4

BOARD OF TRUSTEES

1948

Ex-Officio Members

Earle C. Clements, Governor
Boswell B. Hodgkin, Superintendent of Public Instruction
Harry F. Walters, Commissioner of Agriculture

From the State Board of Agriculture

J. N. Smith, Eddyville
Eldred E. Adams, Louisa
Robert Tway, Louisville

Members at Large

Richard C. Stoll, Lexington
Edward C. O'Rear, Frankfort
Harper Gatton, Madisonville
Mrs. Paul G. Blazer, Ashland
John C. Everett, Maysville
R. P. Hobson, Louisville

Alumni Members

Guy Huguelet, Lexington
Thomas H. Cutler, Frankfort
Grover Creech, Louisville

Officers of the Board

Earle C. Clements, Chairman
Richard C. Stoll, Vice Chairman
Frank D. Peterson, Secretary and Treasurer

Executive Committee

Richard C. Stoll, Chairman
T. H. Cutler
John C. Everett
R. P. Hobson
Harper Gatton

BULLETIN
OF THE
University of Kentucky



SUMMER SESSION, 1948

June 18 to August 14

CONTENTS

| | Pages |
|---|-------|
| Calendar | 3 |
| Administrative Organization | 4 |
| Part I. General Information | 5 |
| The Summer Session for 1948 | 7 |
| Accredited Relations | 8 |
| The Environment of the University | 8 |
| Placement Service | 9 |
| The University School and Student Teaching..... | 10 |
| Length of Session | 11 |
| Admission | 11 |
| Numbering of Courses | 13 |
| Student Load | 13 |
| Fees | 13 |
| Refunds | 14 |
| Late Registration | 14 |
| Marking System | 14 |
| Room and Board | 14 |
| University Health Service | 15 |
| Requirements for Graduation | 15 |
| College of Arts and Sciences | 17 |
| College of Agriculture and Home Economics | 20 |
| College of Engineering | 21 |
| College of Law | 22 |
| College of Education | 22 |
| College of Commerce | 24 |
| College of Pharmacy | 24 |
| Graduate School | 24 |
| Part II. Schedule of Classes | 27 |

SUMMER SESSION CALENDAR—1948

| | |
|-------------|---|
| June 18 | Friday—Classification tests and physical examinations for all new students |
| June 18, 19 | Friday and Saturday—Registration and classification of all students, according to the alphabetical schedule below |
| June 21 | Monday—Class work begins |
| June 24 | Thursday—Last date one may enter an organized class for the Summer Session |
| July 1 | Thursday—Last date on which one may drop a course without a grade |
| July 1, 2 | Thursday and Friday—Period for filing application for degrees |
| July 3 | Saturday—Independence Day holiday |
| August 13 | Friday—Summer Session Commencement |
| August 14 | Saturday noon—End of Summer Session |

REGISTRATION SCHEDULE FOR SUMMER SESSION

June 18, Friday—Classification tests, physical examinations, and advisory conferences for new students. All freshmen and all other new students, except those enrolling in the Graduate School, must have the tests and examinations completed before they will be permitted to register. All new students should report first to Room 200, Biological Sciences Building.

June 18, Friday—Registration and classification of all former students according to the alphabetical schedule below:

June 19, Saturday—Registration and classification of new and former students.

| Friday Forenoon | Friday Afternoon |
|-------------------------|----------------------------|
| 8:00 to 8:50 M thru N | 1:30 to 2:20 C thru F |
| 9:00 to 9:50 O thru S | 2:30 to 3:20 G thru L |
| 10:00 to 10:50 T thru Z | 3:30 to 4:20 Miscellaneous |
| 11:00 to 11:50 A thru B | A thru Z |

Saturday Forenoon

| |
|--|
| 8:00 to 9:50 Miscellaneous A thru Z |
| 10:00 to 11:50 New Students |

ADMINISTRATIVE ORGANIZATION

HERMAN LEE DONOVAN, M.A., Ph.D., LL.D., President

LEO M. CHAMBERLAIN, M.A., Ph.D., Vice President

MAURICE F. SEAY, M.A., Ph.D., LL.D., Dean of the University and Registrar

FRANK D. PETERSON, A.B., University Comptroller

ALBERT DENNIS KIRWAN, M.A., Ph.D., Dean of Men

SARAH BENNETT HOLMES, M.A., Dean of Women

JOHN SHARPE CHAMBERS, M.S., M.D., Director of University Health Service

LOUIS M. CLIFTON, M.A., Director of University Extension

LYSLE WARRICK CROFT, M.A., Ph.D., Director of University Personnel Office

MARGARET ISADORA KING, A.B., B.S., Librarian

BART NIXON PEAK, A.B., LL.B., Executive Secretary, University Young Men's Christian Association

CAROLYN SPICER, A.B., Secretary, Young Women's Christian Association.

ELMER GRIFFITH SULZER, A.B., Director of University Radio Station

RAYMOND WESLEY WILD, A.B., Ph.M., Director of Public Relations

THE COLLEGES

MARTIN MARSHALL WHITE, M.A., Ph.D., Dean of the College of Arts and Sciences

THOMAS POE COOPER, B.S., D.Sc., LL.D., Dean of the College of Agriculture and Home Economics and Director of the Experiment Station

DANIEL VOIERS TERRELL, C.E., Dean of the College of Engineering

ALVIN E. EVANS, M.A., Ph.D., J.D., Dean of the College of Law

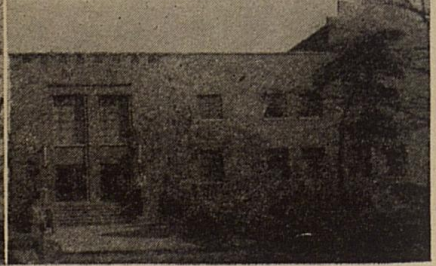
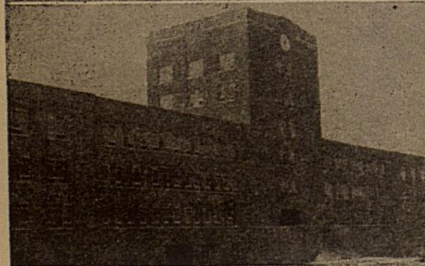
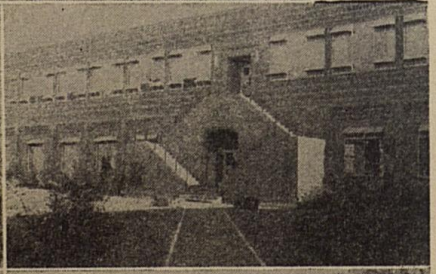
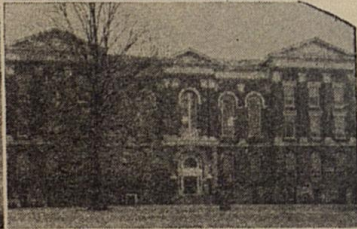
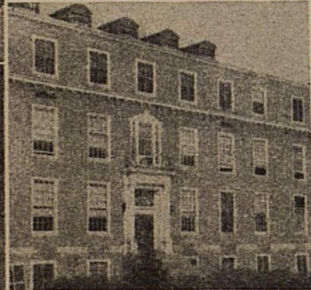
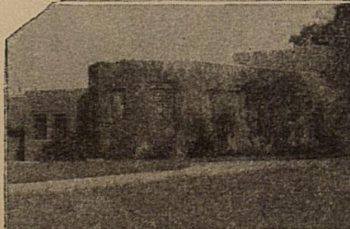
WILLIAM SEPTIMUS TAYLOR, M.S., Ph.D., LL.D., Dean of the College of Education

EDWARD WIEST, M.A., Ph.D., Dean of the College of Commerce

EARL PLATT SLONE, Ph.G., B.S., Dean of the College of Pharmacy

WILLIAM DELBERT FUNKHOUSER, M.A., Ph.D., D.Sc., Dean of the Graduate School.

Part I
GENERAL INFORMATION



GENERAL INFORMATION

THE SUMMER SESSION FOR 1948

The course offering during the 1948 Summer Session will be almost as extensive and varied as during the regular school year. As indicated in a later section of this bulletin, courses will be offered for graduates and undergraduates in the College of Arts and Sciences, the College of Agriculture and Home Economics, the College of Engineering, the College of Law, the College of Education, and the College of Commerce.

In particular, the needs of the following groups have been kept in mind in planning the Summer Session program for 1948.

1. The high school boy or girl who graduates this spring and wishes to begin college work without delay.
2. The veteran who is eligible for educational benefits under Public Law 16 or 346. It will be desirable for the veteran recently discharged to begin his college studies at the earliest date possible. Those already enrolled will find it desirable to continue in school through the summer, in order that graduation may be achieved with the least loss of time.
3. Teachers, principals, supervisors, and superintendents who wish to further their preparation for educational work. The in-service education of teachers has lagged greatly during the war, and it is expected that hundreds of teachers and other school officials will now wish to continue their summer studies.
4. All students, women and men, who are in college and wish to accelerate their programs of study.
5. Other persons who need certain courses to advance in their specific vocations, and to meet the requirements of the post-war economy.

Over and above its program of liberal education, the University Summer Session provides numerous opportunities for persons to prepare for specific occupations. The extent of the opportunities is indicated by the following vocational areas in which summer courses will be offered: Industrial Chemistry, Journalism, Medical Technology, Pre-Medicine, Pre-Dentistry, Pre-Nursing, Music, Library Science, Public Service, Art, Bacteriology, Geography, Geology, Psychology, Social Work, Sociology, Agriculture in its various phases, Pre-Forestry, Pre-Veterinary, Home Economics, Architectural Engineering, Aeronautical Engineering, Civil Engineering, Communications Engineering, Electrical Engineering,

Mechanical Engineering, Metallurgical Engineering, Mining Engineering, Law, Elementary Teaching, High School Teaching, Educational Supervision and Administration, General Business, Commerce-Law, Industrial Administration, and Secretarial Work.

ACCREDITED RELATIONS

The University of Kentucky is on the approved list of the Association of American Universities, and is a member of the Southern Association of Colleges and Secondary Schools and the Kentucky Association of Colleges and Secondary Schools. It is accredited in its respective colleges or departments by the Association of American Law Schools, the American Association of Collegiate Schools of Business, the American Association of Schools and Departments of Journalism, the American Library Association, the National Association of Schools of Music, and the Engineer's Council for Professional Development, the American Chemical Society, the National Association of Schools of Social Administration. The American Council on Pharmaceutical Education, and the American Association of Colleges of Pharmacy.

THE ENVIRONMENT OF THE UNIVERSITY

The University of Kentucky is located in Lexington in the center of the Bluegrass, a delightful country of scenic beauty and of great historical interest.

Many of the famous horse farms, some individual establishments containing more than a thousand acres, are open to visitors throughout the year. These farms, with their broad pastures, sparkling streams, woodlands, and paved roads provide Fayette County with a system of parks which is unique. Idle Hour, cradle of four Derby winners; Elmendorf; Walnut Hall; Calumet, home of Citation; Castleton; Hamburg Place; Dixiana; and Coldstream, are among the beautiful horse farms in Fayette County open to visitors.

Points of particular interest in Lexington, other than the nearby farms, are Ashland, the home of Henry Clay; General John Hunt Morgan's home; the home of Mary Todd, wife of Lincoln; the vast tobacco warehouses; the Keeneland Race Track; the track of the Kentucky Trotting Horse Breeder's Association; the United States Veterans' Hospital; and the U. S. Public Health Service Hospital.

Within a relatively short distance from Lexington are Frankfort, the Capital City, with its many historical features; Herrington Lake; Shakertown; Fort Harrod and its adjacent Pioneer Cemetery; the Old Kentucky Home; the Palisades of the Kentucky River; and many other points of historical and scenic interest.

STUDENT UNION BUILDING

The Union Building is the center of student activity on the campus. Various rooms are available for the enjoyment of stu-

dents during leisure hours. One may meet friends or read leading magazines and newspapers in the Great Hall; engage in pool, billiards, or pingpong in the Game Room; play cards, checkers, or chess in the Social Room; and hear the works of great composers in the Music Room.

For the convenience of students, the building maintains an information desk, telegraph and telephone service, a modern barber shop, a cafeteria serving foods of quality, an attractive soda grill, conference rooms and comfortable lounges.

The Student Union Board is eager for all University students to take advantage of the services and facilities of the building.

PLACEMENT SERVICE

There is a constantly growing demand for the services of the graduates of the University of Kentucky. Placement services are maintained by several colleges on the campus and every attempt is made to procure for the students and for the graduates of the University the type of employment which will enable each one to achieve the best results.

In the College of Commerce is the Senior-Commerce Employment Association which is self-supporting and is headed by a permanent secretary. The Association has been very successful in placing graduates with nationally operating industrial concerns, credit investigating and reporting companies, wholesale houses, banks, insurance companies, chain store companies, governmental agencies both federal and state, and in teaching positions. These positions included secretarial work, accounting, advertising, selling, personnel, and statistical work.

The Teacher Placement Bureau of the College of Education is designed particularly to assist in the placement of superintendents, principals, and teachers. Each student in attendance at the University who desires a teaching position should register with the Placement Bureau, Room 115, Education Building. Superintendents and college administrators who desire capable teachers should write directly to the bureau for recommendations and credentials.

The College of Engineering has an enviable reputation for educating its men well for successful careers in the engineering and industrial world. The demand for their services has been such that, with a few exceptions, all members of each class have been employed soon after graduation. The placement of engineering graduates is directed by the Dean of the College with the assistance of the heads of departments.

RECREATIONAL ACTIVITIES

The summer months are vacation and recreation time. Provision is made for Summer Session students to participate in numerous recreational activities and to learn the fundamental skills and

techniques involved. The Physical Education Department is offering recreational courses for men and women students in archery, badminton, tennis, social and folk dancing, volley ball, bowling, hiking, camping, and intramural sports. This is an opportunity for every summer session student to receive expert instruction in any or all of the above mentioned activities. If you are a novice it is your chance to learn; if an expert performer, it is your chance to participate under wholesome and enjoyable circumstances.

The primary purpose of the recreational courses is to provide pleasant and profitable leisure time activity for all students and to improve their performance ability. Teachers and supervisors of physical education and classroom teachers will find the courses valuable in organizing teaching material and methods. Recreational leaders and directors will get new ideas on promoting leisure time activities. All Summer Session students will find the activities healthful and enjoyable.

THE UNIVERSITY SCHOOL AND STUDENT TEACHING

The University School will be in session from Monday, June 7, through Saturday, July 24. The high school will be open from 8:00 to 12:00 o'clock in the morning six days in the week. Classes in the elementary school will meet five days a week.

Students desiring to register for student teaching in the University School should make application on or before May 31 to Professor Lyman Ginger, Director of the University School. Students are urged to file their applications for this course as early as possible, as time should be allowed to check the prerequisites before registration.

Summer school students who have children of school age have an opportunity to place them in the University School. Both the Elementary School and the High School maintain modern programs of education that should be of interest to parents attending the University of Kentucky summer session. Persons desiring to avail themselves of the opportunities of the University School should write the Director requesting reservations for their children.

The University School will provide instruction in subjects regularly offered in the schools of Kentucky. High school pupils may earn one unit of credit toward their graduation requirements. This unit of work may be done in one subject or in two different subjects.

Pupils from any school in the state will be permitted to enroll in the University School for the summer term. The tuition charge for high school pupils will be \$10 for one-half unit or \$15 for one full unit in the ninth, tenth, eleventh, and twelfth grades. The tuition charge for seventh and eighth grade pupils will be \$7.50. No tuition is charged in the Elementary School for the summer session.

LENGTH OF SESSION

The Summer Session of the University of Kentucky for 1948 will be eight weeks in length, six days a week. The session will open June 18 and close August 14.

Classes during the Summer Session will begin at 7:00 a. m.

ADMISSION

Students will be admitted to the University as their previous education warrants. They will be admitted to the freshman class, to advanced standing, as special students, as graduate students, or as auditors.

Applicants for admission should write the Registrar's Office for forms on which to submit their applications, stating at the time whether they wish forms for admission to the freshman class, to advanced standing, or to the Graduate School. Applications and transcripts of credit should be filed in advance. Students entering with advanced standing and those entering the Graduate School should present transcripts from each institution they have attended.

To the Freshman Class. Applicants who are graduates of accredited high schools will be admitted to the University on certificate, provided they have at least fifteen units of acceptable high school work. A unit represents the study of any subject for a school year of at least thirty-two weeks, with five recitation periods a week, each of at least forty-five minutes in length, or the equivalent thereof. Double periods are required in shop, drawing, typewriting, and all other courses which demand no out-of-class preparation. One unit is the minimum credit accepted in any foreign language, and one-half unit the minimum in any other subject.

While the University does not prescribe a pattern of work for admission, it recommends that at least ten of the units presented be chosen from English, the social studies, mathematics, the foreign languages, and the laboratory sciences, and that within these ten units the student offer at least three units in English, one and one-half in algebra, and one in plane geometry. Should a student lack these courses as prerequisites for any of his college work, he will be required to take them in college without credit.

Applicants who have graduated from unaccredited high schools and those not graduated from high school may be admitted as freshmen if, in addition to presenting the fifteen acceptable units, they successfully pass the University classification examinations.

Admission to the University does not necessarily qualify a student for admission to a particular college. In every case the student must meet the admission requirements of the college in which he is to enroll.

To Advanced Standing. A student who applies for admission with advanced standing is expected to present evidence that he is

in good standing in every respect in the institution last attended, and in general is required to have maintained a standing of 1.0 in all previous college work. The University does not disregard at any time or under any conditions college or university records in order to admit applicants solely on the basis of their high school records.

As a Special Student. A graduate of another university or college may enter the University as a special student. Other persons may be admitted as special students provided they are fully prepared to do the work desired and provided they are at least twenty-one years of age.

As an Auditor. By payment of the required fees any person may be admitted to a class or classes as an auditor. A student regularly enrolled in any college must apply to the Dean of the college in which he is registered in order to be an auditor. Other persons should apply to the Registrar's Office for admission. No credit can be given for a class audited, nor is the student permitted an examination for credit.

College of Arts and Sciences. Admission to this college is governed by the general admission requirements of the University outlined on the preceding pages.

College of Agriculture and Home Economics. Admission to this College is governed by the general admission requirements of the University outlined on the preceding pages.

College of Engineering. In addition to meeting the general admission requirements of the University, outlined on the preceding pages, the applicant for admission to the freshman class of the College of Engineering must rank in the upper three-fourths on the University classification tests. His high school credits must include one unit in plane geometry, one and one-half units in algebra, and one-half unit in solid geometry. If the student lacks only the half unit in solid geometry, he may be admitted, but this subject will be added to the requirements of the freshman year.

College of Law. An applicant for admission to the College of Law must offer 60 credits (exclusive of physical education and military science) completed in residence in colleges other than Law, six of which must be in English. A standing of 1.0 is the minimum qualitative requirement, but in other than exceptional cases an applicant will not be accepted unless he has maintained a standing of 1.3 on all previous work. While there is no prescribed pre-law curriculum, the applicant's record is evaluated in terms of its relationship to the study of law, and in terms of the requirements of the Association of American Law Schools.

College of Education. In addition to meeting the general admission requirements of the University, outlined on the preceding pages, the applicant for admission to the freshman class of the

College of Education must rank in the upper three-fourths on the University classification tests. In order to transfer to the College of Education from another institution or from another college of the University, a student must have a standing of 1.0 or higher.

College of Commerce. In addition to meeting the general admission requirements of the University, outlined on the preceding pages, the applicant for admission to the freshman class of the College of Commerce must rank in the upper three-fourths on the University classification tests.

College of Pharmacy. Admission to this college is governed by the general admission requirements of the University outlined on the preceding pages.

The Graduate School. A graduate of a fully accredited institution of higher learning may be admitted to the Graduate School upon evidence of graduation and an official transcript of undergraduate courses. However, such admission does not obligate the University to accept all credit granted by the undergraduate school. When full credit is not granted, the student will be required to do more than the normal amount of work to complete a graduate degree. Applications from graduates of institutions not fully accredited will be individually evaluated.

NUMBERING OF COURSES

Courses numbered 1 to 99, inclusive, may be taken for credit only by undergraduate students. Courses numbered 100 to 199, inclusive, may be taken for credit by juniors, seniors, and graduate students, provided that a course so numbered may carry graduate credit only with the approval of the student's graduate committee. Courses numbered 200 or above are open only to graduate students.

STUDENT LOAD

The normal load for the summer session is from 9 to 11 semester hours.

FEEES

For the summer session the full-time fee for all Kentucky students, except those enrolled in the Law School, will be \$28.50 and for students in the Law College the fee will be \$30.00. For out-of-state students in all colleges except law who entered before September 1, 1947, the fee will be \$43.50, and for those entering after September 1, 1947, the fee will be \$57.50. The fee for out-of-state students in the Law College will be \$45.00 and \$59.00 respectively.

Part-time students will pay according to the number of semester hours carried, except that the full-time fee will be paid in all cases when the student load for the session equals or exceeds six semester hours.

REFUNDS

During the first week after the opening of the Summer Session, students withdrawing from the University may receive a refund on the amount paid in fees, not to exceed 70 per cent of all fees paid. During the second week a refund of 50 per cent may be secured, and during the third week a refund of 30 per cent. In no case shall the amount refunded exceed 70 per cent and in no case will refunds be made after the first three weeks.

LATE REGISTRATION

No student will be allowed to register for credit after June 24. Students entering the University after the regular registration periods will be charged an additional fee of \$3.00 for the first day, \$4.00 for the second day, and \$5.00 for any day thereafter. No exceptions to this charge will be granted.

MARKING SYSTEM

Results of work will be recorded in the Registrar's office as follows:

- A—Exceptionally high quality, valued at 3 points for each credit.
- B—Good, valued at 2 points for each credit.
- C—Fair, valued at 1 point for each credit.
- D—Unsatisfactory, indicates a deficiency and gives no points, but gives credit for graduation if with such credit the student's standing is 1 or more.
- E—Failure, valued at no points and no credit.
- I—Incomplete.
- X—Absent from examination.
- WP—Withdrew passing.
- WF—Withdrew failing.

The standing of a student is defined as the ratio of his total number of points to his total number of credits. When a semester's work is to be considered a standing is understood to be the ratio of the number of points gained to the number of credits scheduled.

ROOM AND BOARD

Application for a room in the Women's Residence Halls should be made to the Dean of Women, and for a room in the Men's Residence Halls to the Dean of Men. Each application should be accompanied by a reservation fee of \$10.00. If a check is sent in payment of this fee it should be made payable to the University of Kentucky. **Refunds of this fee will be made only in case notification of cancellation is given the Dean of Women or the Dean of Men at least thirty days before the session opens for which the reservation is made.** Upon occupancy of the room by the student, this fee will be held as a breakage deposit to be returned at the close of the session.

Women's Residence Halls. As the housing shortage has seriously limited the number of available rooms in Lexington, prospective students should make reservations for the Residence Halls or Sorority Houses as early as possible. The three large halls and as many of the smaller units as needed will remain open. Meals will be served in the central dining unit of the Residence Halls. The cost of room and board is \$100 per summer session.* Bed linens are furnished but students should bring blankets and towels. An application blank for reserving a room in the Residence Halls should be secured from the office of the Dean of Women but a reservation will not be made until the completed application is returned accompanied by the \$10 deposit. Admission to the University by the Registrar's Office does not constitute a reservation in the Residence Halls. All room assignments are made in the order of receipt of the completed application. In order to hold a room beyond the regular registration dates, special arrangements for late arrival should be made with the Dean of Women.

MEN'S RESIDENCE HALLS

All freshman men are required, by order of the Board of Trustees, to live in the Men's Residence Halls as far as space is available, or unless excused by the Dean of Men. Upperclassmen will be accepted in the halls if they cannot be filled with freshmen. The Office of the Dean of Men also maintains a list of rooms in private homes which are available to students. Students may consult this list by calling at the Dean of Men's Office.

To make application for a room in the halls a \$10.00 deposit is necessary. This deposit will be refunded if notice is given the Dean's office within thirty days before the beginning of the session that the room is not desired. Otherwise, it will be forfeited.

For the 1948 Summer Session prices of rooms in the Men's Residence Halls will range between \$22.50 and \$34.50.

The University also maintains Officer Type Barracks, which were erected by the Federal Housing Administration and are operated under Government direction. Rent for the session per person will range between \$22.50 to \$25.00.

The University also maintains two housing projects for married veterans. To make application for units for married couples a \$10.00 deposit is also required. Rental for these units range from \$22.50 to \$41.00 per month.

University Cafeteria. Meals will be served at the University Cafeteria during the Summer Session.

Rooms and Board in Lexington. All prospective University of Kentucky students should make arrangements for living quarters before coming to Lexington. For information relative to

*The University reserves the right to change this figure in view of constantly rising living costs.

available rooms the student should apply to the Office of the Dean of Women, or Dean of Men. The housing shortage has seriously limited the number of available rooms in the city.

UNIVERSITY HEALTH SERVICE

The services of a physician and nurse and complete infirmary facilities will be available to the students registered in the Summer Session.

REQUIREMENTS FOR GRADUATION

Undergraduate Colleges. To be eligible for graduation from any under-graduate college of the University, a student must have completed the requirements of the curriculum as approved by the University Faculty. In addition to gaining the specified number of credits he must have an equal number of quality points—that is, a standing of 1.0.

Regardless of the length of time the student has attended the University, a minimum of thirty of the last thirty-six credits presented for the degree must be completed in residence at the University.

Not more than thirty-two of the credits required for an under-graduate degree may be gained by extension, special examination, or both. A student may not satisfy in excess of one-half the requirements for a major by extension, special examination, or both.

The Graduate School. A student is required to satisfy the requirements for the degree for which he is a candidate as of the date on which he enters the Graduate School. In all cases, however, a minimum residence of one year (36 weeks) is required for the master's degree, and three years (108 weeks) for the doctorate. See the Catalog or Graduate Bulletin for the specific requirements for the various graduate degrees.

No transferred credits are accepted toward the master's degree. Two years of graduate work from a fully accredited institution which offers the doctor's degree may be accepted toward the Ph.D. or the Ed.D. degree.

Theses must be presented in final form to the Dean of the Graduate School not later than three weeks before the date set for the final oral examination. The oral examination must be taken at least fifteen days before the close of the semester or summer session.

A graduate student must maintain a standing of 2.0 and no grade below C shall be counted.

No graduate credit is given for courses taken by correspondence.

No work is given graduate credit unless the student was enrolled in the Graduate School at the time during which the work was taken.

Application for a Degree. All students in residence during the summer session who are to be candidates for degrees in August should make formal application in the office of the Registrar on Friday, July 16. No applications for graduation in August will be received after this date. The student is responsible for making application for the correct degree. That is, if a student is working for the degree, Bachelor of Arts in Education, he should apply for this degree and not make application for the degree, Bachelor of Arts, granted in the College of Arts and Sciences. If, for any reason, a student does not receive the degree at the time indicated on the application, it will be necessary for him to file another application, as the University is not responsible for carrying over applications from one session to another.

COLLEGE OF ARTS AND SCIENCES

The college courses are planned to meet the needs of various classes of students. They may be listed under the following heads:

1. General cultural courses with majors and fields of concentration, leading to the degrees of A.B. and B.S.
2. Professional courses in industrial chemistry, leading to the degree of B.S. in Industrial Chemistry; in journalism, leading to the degree of A.B. in Journalism; in library science, leading to the degree of B.S. in Library Science; in music, leading to the degree of A.B. in Music; and in bacteriology, leading to the degree of B.S. in Medical Technology.
3. Professional courses in which the general requirements for the A.B. and B.S. degrees are fulfilled.
4. Pre-Professional courses meeting the requirements for admission to professional schools.
5. Combined courses, by means of which students may save a year or more in gaining both the A.B. or B.S. and a degree in Law, Medicine, or Dentistry.
6. Graduate courses leading to the master's and doctor's degrees in the Graduate School.

The Degree of Bachelor of Arts. For the degree of Bachelor of Arts the student is required to gain a total of 128 credits and 128 points; that is, a standing of 1.0, subject to the following conditions.

OUTLINE OF REQUIREMENTS FOR GRADUATION

Lower Division—Freshman and Sophomore Years

General Requirements:

Freshman Orientation, first quarter, freshman year, 1 credit.
English, first and second semesters, freshman year 6 credits.
General Hygiene, first or second semester, 1 credit.

Physical Education, freshman and sophomore years, passing the physical education achievement tests.

Military Science (men), freshman and sophomore years, 8 credits.

Group Requirements:

Humanities, freshman or sophomore year, 6 credits. (Literature, Art, Music, Philosophy.)

Social Studies, freshman or sophomore year 5-6 credits. (Economics, Geography, History, Political Science, Sociology.)

Physical Sciences, freshman or sophomore year, 5-6 credits. (Astronomy, Chemistry, Geology, Mathematics, Physics.)

Biological Sciences, freshman or sophomore year, 5-6 credits. (Anthropology, Bacteriology, Botany, Physiology, Psychology, Zoology.)

Foreign Languages until proficiency examination is passed on 6 credits. (French, German, Greek, Italian, Latin, Spanish.)

Ways in Which the Group Requirements May Be Satisfied:

1. *The Humanities.* All lower division students will be required to complete a series of three introductory courses in the Humanities (for a total of 6 credits), to be chosen in any combination of three from the following specific courses, except that one, and not more than two, shall be selected from the literature courses: (Each of these courses will carry two credits.)

English A, Introduction to Humanities Through English Literature; Romance Language A, Introduction to Humanities Through Romance Literature; German A, Introduction to Humanities Through German Literature; Philosophy A, Introduction to Humanities Through Philosophy; Music A, Introduction to Humanities Through Music; and Art A, Introduction to Humanities Through Art.

2. *The Social Studies.* The student is permitted to choose one of the following sequences, to satisfy the group requirement in the social studies: (Each sequence will carry 6 credits.)

History 10a, b or Political Science 10a, b, American Civilization; History 8a, b or Political Science 8a, b, European Civilization; Sociology 3a, b or Geography 3a, b, Societies Around the World.

3. *The Biological Sciences.* Those students who, upon entering the University, state that they expect to elect a science curriculum shall satisfy the biological group requirements of the lower division by any general course or courses in one of the departments of the biological group. Other students shall satisfy the group requirements in the biological sciences by tak-

ing any two of the following courses: Anatomy and Physiology 2; Anthropology 1 or 2; Botany 25; Psychology 1; Zoology 25.

4. *The Physical Sciences.* Students will be permitted to take work in either one or two departments in order to satisfy the physical science group requirement. The student may choose six or more credits from the following courses: Astronomy 51a, b; Chemistry 1a, b, 4a, b; Geology 50a, b (50a is prerequisite for 50b), 14a b (in connection with 50a, b), 3, 30a, b, '2; Mathematics 5a, b (only one counted on group), 17, 3, 19; Physics 1a, b, 3a, b, 51a, b (51a is prerequisite for 51b).

| Freshman Core Curriculum | Credits |
|---|----------------|
| Orientation | 1 |
| General Hygiene | 1 |
| Military Science (men) | 4 |
| Physical Education* | 0 |
| English | 6 |
| Humanities, or Social Studies | 6 |
| Physical or Biological Sciences | 6 |
| Foreign Languages or free electives | 6 |

Total number of credits required in Lower Division, 64.

The normal load per semester is 16 credits.

Rules and Procedures

1. Superior Students: Entering freshmen, in the upper twenty-five per cent of the classification scale, as determined by University of Kentucky classification tests, may substitute other courses in the groups for those courses which are set up especially to satisfy group requirements. Other students, in the top twenty-five per cent of the classification scale of the University of Kentucky classification tests, with a standing of 2, may be granted the same privilege.
2. The requirements in whole or in part for English, for General Hygiene, and for any of the Groups under Section II, may be satisfied without credit by passing a departmental proficiency examination.
3. A student deficient in English, as indicated by the freshman tests, will be required to pass English D (with no credit) in his first semester, and the regular freshman English course in his second and third semesters, or whenever he has satisfactorily removed the deficiency.
4. A student deficient in mathematics, as indicated by the freshman tests, will be required to pass Mathematics D (with no credit).

*Passing the physical education achievement tests.

Upper Division—Junior and Senior Years

Field of Concentration. Forty credits are to be elected subject to the approval of the student's adviser and the Dean of the College, and must be in courses not open to freshmen.

Major. At least 15 credits of the required 40 in the field of concentration must be in one department, the major department, exclusive of courses open to freshmen. However, the major department may require more than the minimum 15. A minimum of 6 credits is required as a prerequisite for a major in any department. **A Topical Major** is also offered which is not confined to one department or field.

The Four Generically Related Fields Are: 1. Literature, Philosophy, and the Arts. 2. Social Studies. 3. Physical Sciences. 4. Biological Sciences.

Tutorial Work and Comprehensive Examinations. Students majoring in the departments of Anatomy and Physiology, Ancient Languages, Art, Botany, Economics, Geology, German, Journalism, Music, Philosophy, Physical Education, Physics, Political Science, Psychology, Radio Arts, Romance Languages, Social Work, Sociology, and Zoology will be required to schedule tutorial courses as specified by their major department and to take final comprehensive examinations as a prerequisite for graduation for major students in these departments.

COLLEGE OF AGRICULTURE AND HOME ECONOMICS

Agriculture

To receive the degree Bachelor of Science in Agriculture a student is required to gain a total of 136 credits and 136 points. These represent the minimum requirements for graduation. There are six curricula in agriculture, and completion of the requirements of any one of these leads to the degree. In all cases the student is responsible for meeting the requirements for graduation.

The General Curriculum in Agriculture enables the student to obtain a general education and at the same time pursue some specialization in a chosen field. In this curriculum the student has the privilege of selecting one of the following options for study during the junior and senior years: Agricultural Entomology, Agricultural Extension, Agricultural Science, Agronomy, Farm Economics, General Agriculture, Vocational Agriculture, Rural Sociology, and Markets and Rural Finance.

The Curriculum in Agricultural Economics is for students desiring to enter some phase of agricultural business.

The Curriculum in Animal Industry is for students whose primary interest is in livestock production and the livestock industry. The student in this curriculum chooses one of the following options: Animal Husbandry, Dairy Manufacturing, Dairy Production,

or Poultry Husbandry. Proper use of free electives permits a student to prepare to teach Vocational Agriculture.

The Curriculum in Horticulture is for students interested in the production of fruits and vegetables and in allied industries. It provides opportunity for a student to prepare to teach Vocational Agriculture.

The Curriculum in Ornamental Horticulture prepares specialists in floriculture and landscape gardening.

The Curriculum for Teachers of Vocational Agriculture prepares students to be teachers of agriculture in high school.

Home Economics

To receive the degree Bachelor of Science in Home Economics a student is required to gain a total of 136 credits and 136 points. These represent the minimum requirements for graduation. There are six curricula in home economics and a student who completes the requirements of any one of these qualifies for the degree. In all cases the student is responsible for meeting requirements for graduation.

The General Curriculum in Home Economics meets the needs of most students and provides the basic requirements for the curricula in major fields. It enables the student to obtain a general education and at the same time pursue some specialization in a chosen field of home economics.

In addition to the general curriculum, provision is made for majors in the following fields: Child Development and Family Living; Clothing, Costume Design, Textiles and Interior Decoration; Home Economics Extension; Institution Economics; and Vocational Home Economics.

COLLEGE OF ENGINEERING

Admission. For admission to the freshman class in the College of Engineering, applicants should present one and one-half units in Algebra, one unit in Plane Geometry, and one-half unit in Solid Geometry, other requirements being the same as specified for admission to the freshman class in general. Applicants meeting all of the general requirements, except the half unit in Solid Geometry, may be admitted to the freshman class, but will be required to remove the deficiency during the freshman year. It is desirable, but not obligatory, that applicants also have high school credit in Chemistry, Physics, and Trigonometry. Admission to the freshman class of this college is limited to students rated in the upper three-quarters on the University classification tests. An applicant for admission who ranks in the lower one-fourth on the University classification tests may enter the College of Arts and Sciences and, if satisfactory progress is made during the year, may be admitted to the College of Engineering.

Courses of Study and Degrees. The College of Engineering offers instruction leading to the following baccalaureate degrees:

Bachelor of Science in Civil Engineering
Bachelor of Science in Electrical Engineering
Bachelor of Science in Mechanical Engineering
Bachelor of Science in Metallurgical Engineering
Bachelor of Science in Mining Engineering

The courses of study leading to these degrees are identical during the freshman year. This gives the student the benefit of a period of training in fundamental subjects before he is required to choose among the different fields.

There will be a freshman class in engineering beginning work in the Summer Session of 1948.

COLLEGE OF LAW

The Summer Session is a regular part of the work of the school, equivalent to one-half a semester. It thus permits students to shorten their full three-year course materially so far as length of time is concerned; the same quality of work is required as in the regular session, as is the same quantity, relatively.

The courses in the College of Law for the Summer Session are planned with special reference to three types of students: first, students who desire to shorten the three-year period by studying during the summer; second, public school teachers who desire to know something about the law either for their own benefit or for the purpose of advising students; third, lawyers, probate judges, and prosecuting attorneys who desire either to complete their work for a degree or to become acquainted with recent developments of the law.

The law library is one of the best in the South, consisting of approximately 34,000 volumes. It receives regularly approximately 100 legal periodicals.

The Order of the Coif was established in 1931. Summer school students are entitled to consideration for membership in this Order on the completion of other work.

The Law School publishes the Kentucky Law Journal four times a year.

COLLEGE OF EDUCATION

The College of Education grants the degree of Bachelor of Arts in Education.

To be admitted to the College of Education a student shall meet the following requirements: standing of at least 1.0 (average of C on all previous work) or, if an entering freshman, he must rank in the upper three-fourths on the University placement tests.

For a degree in education the student is required to present a total of 128 credits with a standing of 1.0.

General Requirements for Students in the Field of Secondary Education

A student who majors in secondary education must complete 128 credits with a standing of 1.0 to be graduated. Majors in secondary education have the following options in the choice of curricula leading to certificates: (1) an area of concentration, (2) two majors, (3) one major and two minors, or (4) one major and one minor when the credit in both is 48 credits, (54 credits when English is included as a major).

Teaching Majors, Minors, and Areas of Concentration

A major shall consist of 24 credits, except a major in English which shall require 30 credits.

A minor shall require 18 credits.

An area of concentration varies with the subjects. Usually it shall be 48 credits unless otherwise specified.

| I. General Requirements | Credits |
|---|---------|
| a. English, including composition, literature, and speech | 12 |
| b. Health, Physical Education, and Safety | 6 |
| c. Psychology | 6 |
| d. Group requirements | 27 |

Each candidate must present not less than 27 credits distributed among three fields with not fewer than 6 credits in any field. Two of these three groups must be in fields different from the majors and minors or area of concentration. One group may be in the same field but not in the same subject as the major or one minor. The fields from which the 27 credits may be selected are:

| | |
|---------------------------|---------------------|
| Fine Arts | Science |
| Foreign Language | Social Science |
| Mathematics | Vocational subjects |
| Philosophy and Psychology | |

| II. Professional Preparation | Credits |
|--|---------|
| a. Introduction to Education | 2 |
| b. Educational Psychology | 3 |
| c. School Organization | 3 |
| d. Fundamentals of Secondary Education | 3 |
| e. Student Teaching | 9 |

General Requirements for Students in the Field of Elementary Education

A student who majors in elementary education must complete a total of 128 credits, with a standing of 1.0, to be graduated.

| | |
|--|---------|
| I. General Requirements | Credits |
| a. English, including composition, speech, English and American literature | 15 |
| b. Science, including heredity | 12 |
| c. Social Sciences, including American Civilization, Kentucky History, Sociology, and Geography | 21 |
| d. Fine Arts, including public school music and public school art | 6 |
| e. Psychology | 6 |
| f. Nutrition | 3 |
| g. Health and Physical Education | 6 |
| II. Professional Preparation | |
| a. Child Growth and the Curriculum | 6 |
| b. Industrial Arts in the Elementary School | 2 |
| c. Teaching Arithmetic in the Elementary School | 3 |
| d. The Teaching of Reading | 3 |
| e. Children's Literature | 3 |
| f. Science in the Elementary School | 3 |
| g. Student Teaching in the Elementary School | 12 |
| III. Electives | 27 |

COLLEGE OF COMMERCE

The degree of Bachelor of Science in Commerce is conferred upon students who meet the requirements of any one of the curricula offered by the College of Commerce. The minimum number of semester credits required for graduation is 128, except under the Industrial-Administration Curriculum which requires 144. The scholarship standing must be at least 1.0. Unless two units in the ancient or modern foreign languages are offered for entrance, one year of language in college is required for graduation under all curricula except the Industrial-Administration. Regardless of the minimum requirements all Commerce students are urged to take some foreign language.

The courses listed in the General Business Curriculum constitute a core curriculum, because with minor exceptions, these courses are required in all curricula. They are considered basic to all majors or fields of concentration.

COLLEGE OF PHARMACY

At present the College of Pharmacy does not offer a summer session program.

THE GRADUATE SCHOOL

The Growth of the Graduate Program. The demand for graduate work at the University of Kentucky has grown rapidly in recent years. High school teachers, supervisors, principals and superintendents of schools, and teachers in normal schools and

junior and senior colleges are seeking the education and training represented by higher degrees. To meet this demand, the several colleges of the University are providing larger programs of work for graduate students.

Residence Credit. A graduate student must carry at least six hours in the Summer Session to be entitled to full residence credit for the session.

Applicants for Graduate Degrees. Applications for degrees must be made at least four weeks before the date of commencement. These applications are made at the office of the Registrar of the University.

Requirements for the Master's Degree. A candidate for the degree of Master of Arts or Master of Science is required to complete 24 credits of graduate work of which two-thirds is in a major and one-third in electives, spend a full year in residence, present an acceptable thesis, have a reading knowledge of one modern foreign language and pass a final oral examination. He must maintain a standing of 2.0.

Requirements for Professional Degrees. The professional degree of M.A. or M.S. in Education, or M.S. in Agriculture or Home Economics, may be secured with the same requirements except that there is no language requirement and, that with the permission of the department concerned, 12 additional credits and 12 additional weeks may be offered in lieu of a thesis.

General Requirements for a Master's Degree. All candidates for any master's degree must have completed the equivalent of a B.A. or B.S. degree in a fully accredited institution. Part-time residence during any semester or summer session is computed on the basis of one and one-half weeks of residence for each credit earned, but the amount of residence for part-time work is limited except for graduate assistants and part-time instructors, to not more than six weeks in any one semester. No credit toward advanced degrees is allowed for correspondence work.

General Requirements for the Doctor's Degree. The degree of Doctor of Philosophy is offered with major work in the following departments: Chemistry, Education, Economics, English, Farm Economics, History, Markets and Rural Finance, Mathematics, Physics, Rural Sociology, Psychology, Political Science, and Romance Languages. Minor work may be carried in any department offering graduate courses.

The degree of Doctor of Philosophy is conferred upon a candidate who after completing not less than three years of graduate work devoted to the study of a special field of knowledge, satisfies the language requirements, passes the required examination in the subjects, presents a satisfactory dissertation, and is deemed worthy of recognition as a scholar of high attainments in his chosen province.

The doctor's degree is intended to represent not a specified amount of work covering a specified time, but the attainment through long study of independent and comprehensive scholarship in a special field. Such scholarship should be shown by the candidate's thorough acquaintance with present knowledge in his special field of learning and a marked capacity for research.

A minimum of three collegiate years of resident graduate work, of which at least the last year must be spent at the University of Kentucky, is required for the doctorate. The full time of each of these years must be spent in study. Part-time students and those holding assistantships or engaging in other outside activities will of course be required to take a proportionately longer time.

While it is expected that a well prepared student of good ability may secure the degree upon the completion of three years of study, it should be understood that this time requirement is a minimum and is wholly secondary to the matter of scholarship. Neither time spent in study, however long, nor the accumulation of facts, however great in amount, nor the completion of advanced courses, however numerous, can be substituted for independent thinking and original research.

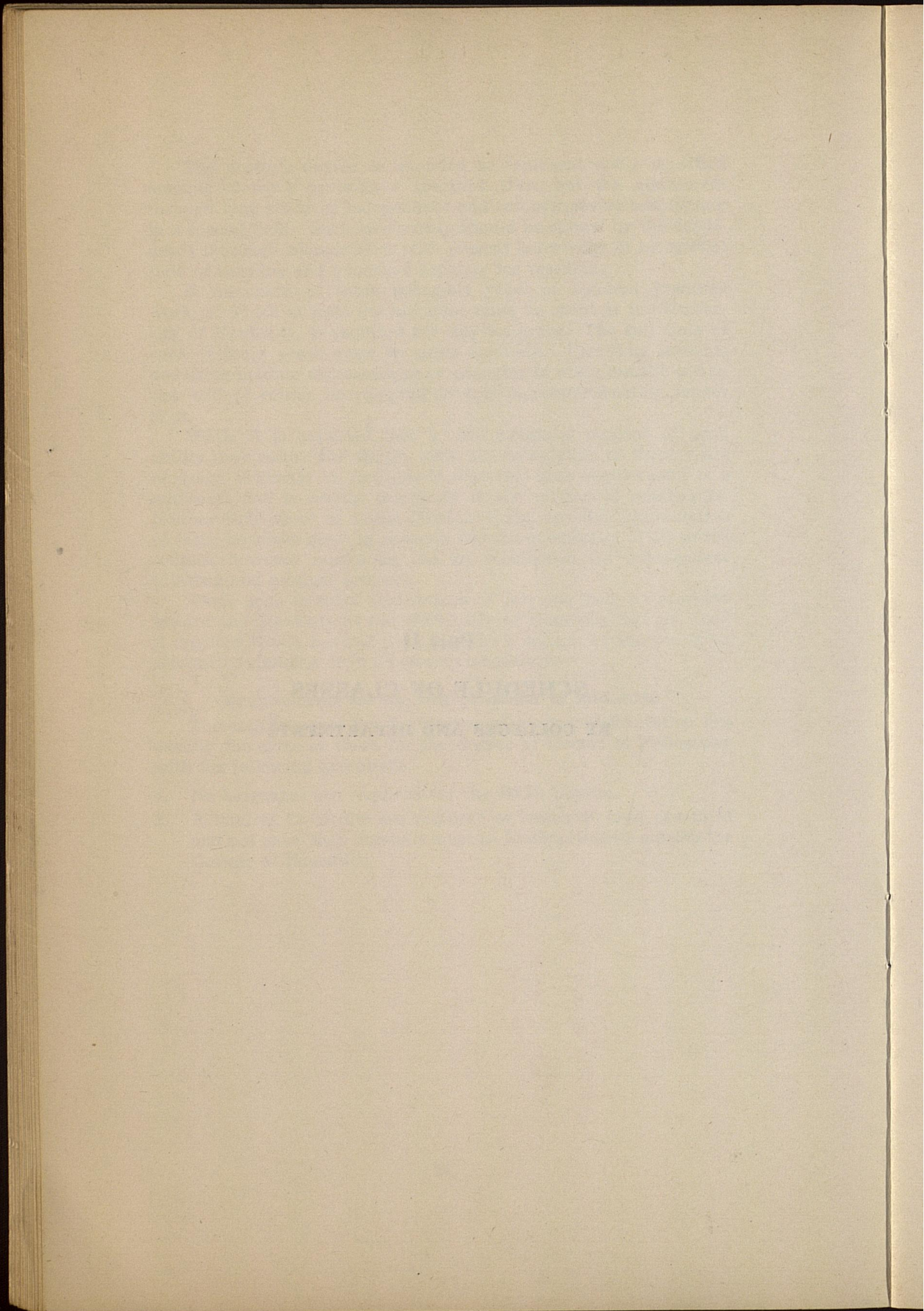
Work done in other institutions of learning may be accepted toward the doctorate at the University of Kentucky but no work is credited which has not been done in a college or university of recognized standing or in a research laboratory.

Requirements for the Degree Doctor of Education

The requirements for the degree of Doctor of Education are exactly the same as those for the degree of Doctor of Philosophy with the following exceptions:

1. No languages are required for the Ed.D. Degree.
2. A total of 72 credits are required of which at least one-third and not more than one-half must be in departments outside the College of Education.

Part II
SCHEDULE OF CLASSES
BY COLLEGES AND DEPARTMENTS



EXPLANATIONS AND ABBREVIATIONS

Colleges are arranged according to order in the catalog and in general, the departments of each College are arranged alphabetically.

Days of recitations are indicated by the initial letters of the days. For example, M-Th indicates the class is offered Monday through Thursday, M-S indicates the class is offered Monday through Saturday, etc.

The buildings are indicated as follows:

| | |
|------------------------------|----------------------------|
| A, Administration | MeH, Memorial Hall |
| AE, Agricultural Engineering | MeL, Meat Laboratory |
| AP, Animal Pathology | MG, Men's Gymnasium |
| Agr, Agriculture | MH, Miller Hall |
| BH, Barker Hall | ML, Mining Laboratory |
| BS, Biological Sciences | Museum |
| D, Dairy | MA, Music Annex |
| E, Education | NH, Neville Hall |
| Eng, Engineering | NorH, Norwood Hall |
| FH, Frazee Hall | NS, Nursery School |
| GA, Gymnasium Annex | Obs, Observatory |
| HB, Health and Hygiene | Pence, Pence Hall |
| HE, Home Economics | SP, Stock Judging Pavilion |
| KH, Kastle Hall | TL, Tobacco Laboratory |
| L, Lafferty Hall | UL, University Library |
| McVH, McVey Hall | WG, Women's Gymnasium |
| | WH, White Hall |

RECITATION HOURS

| | |
|--------------|-------------|
| First Hour | 7:00— 7:50 |
| Second Hour | 8:00— 8:50 |
| Third Hour | 9:00— 9:50 |
| Fourth Hour | 10:00—10:50 |
| Fifth Hour | 11:00—11:50 |
| Sixth Hour | 12:00—12:50 |
| Seventh Hour | 1:00— 2:00 |
| Eighth Hour | 2:10— 3:10 |
| Ninth Hour | 3:20— 4:20 |
| Tenth Hour | 4:30— 5:30 |

INSTRUCTIONS FOR CLASSIFICATION

1. After you have registered go to the Dean's booth in the Men's Gymnasium, for information and assignment to your adviser.
2. Make out your schedule with the help of your adviser.
3. In making out your schedule write, in the proper spaces, the **name of the department** with course and section numbers.
4. After classes are assigned leave four copies of your schedule at your Dean's booth.
5. **Any changes** from the original schedule must be made in the Dean's office. To drop a subject at any time during the quarter, you should first consult your Dean.
6. Extra work petitions must be presented when schedules exceed the amount permitted by the college in which you are enrolled. A standing of 2.0 is required.
7. Four copies of your completed schedule must be filed with your Dean before the close of the registration period. Failure to do this may result in loss of credit for the term.
8. A course cannot be added to your schedule after June 24.

COLLEGE OF ARTS AND SCIENCES

| Course No. | Subject | Credits | Hour | Days | Building | Room No. | Instructor |
|---|---------|---------|------|------|----------|----------|------------|
| AGRICULTURE | | | | | | | |
| <p align="center">-A student in the College of Arts and Sciences may elect toward the A.B. and B.S. degree a total of 30 credits from other colleges of the University.</p> | | | | | | | |
| ANATOMY AND PHYSIOLOGY | | | | | | | |

R. S. Allen, Head of Department, Biological Sciences, Room 304.

UPPER DIVISION REQUIREMENTS—Junior and Senior Years

Requirements in the Field of Concentration: Forty credits of advanced work in the field of Biological Sciences during the junior and senior years, including the major work.

Requirements for a Major. Prerequisites: Anatomy and Physiology 10; Zoology 1a and 1b; Physics 1a and 1b; Chemistry 1a and 1b. **Required:** A minimum of 7 elective credits of advanced work in Anatomy and Physiology plus the courses A. & P. 107, 109, 116a and 116b, and passing a comprehensive examination in the senior year.

LOWER DIVISION REQUIREMENTS—See Page 17.

| | | | | | | | |
|--|---|---|-----------|----------|----|--------------------------|-------------------------|
| *2 | Elementary Anat. and Physiol., Lec. and Rec. | 3 | 6 | M-S | BS | 313 | |
| *6b ₁ | Gen. Anat. and Physiol. for Nurses, Lec. and Rec..... | 3 | 3 | TThFS | BS | 313 | Wiedeman |
| *6b ₂ | Gen. Anat. and Physiol. for Nurses, Lab. | | | | | | |
| 5 ₁ | Elem. Physiol. (Home Ec. and Phys. Ed.), Lec. and Rec..... | 3 | 1 | MWFS | BS | 313 | Wiedeman |
| 5 ₂ | Elem. Physiol. (Home Ec. and Phys. Ed.), Lab. | | | | | | |
| 10 ₁ | General Physiology, Lec. and Rec. | 5 | 2 | M-S | BS | 313 | Allen, Archdeacon |
| 10 ₂ | General Physiology, Lab. | | | | | | |
| | | | 1:00-2:50 | TWThF | BS | 307 | Archdeacon, Wiedeman |
| Courses open only to Upper Division Graduate Students: | | | | | | | |
| 104a-d | Independent Work in Physiol.ea. | 3 | | By Appt. | BS | { 303a 304a 305a } | { Staff |
| 105 | Architecture of the Human Skeleton, Lec. and Rec..... | 4 | 4 | M-S | BS | 307 | Allen |
| 106 | Introduction to Endocrinology.. | | | | | | |
| | | 3 | 5 | TTh | BS | 307 | Allen |
| | | 3 | 5 | M-S | BS | 313 | Archdeacon |
| Course open only to Graduate Students: | | | | | | | |
| 201a-i | Research in Physiology.....ea. | 3 | | By Appt. | BS | { 304a 305a } | { Allen, Archdeacon |

ANCIENT LANGUAGES

Jonah W. D. Skiles, Head of Department, Administration, 303A.

UPPER DIVISION REQUIREMENTS—Junior and Senior Years

Requirements in the Field of Concentration: Forty credits of advanced work in the field of Literature, Philosophy, and the Arts during the junior and senior years, including the major work.

Requirements for a Major. Prerequisites: First two years of college Latin or Greek. **Required:** A minimum of 15 credits of advanced work in Ancient Languages; Tutorial Seminar; comprehensive examination in the senior year.

Note.—The student who presents one unit of high school foreign language will be permitted to enroll in first year work for full credit. The student who presents two units

* Open to Freshmen.

COLLEGE OF ARTS AND SCIENCES—Continued

| Course No. | Subject | Credits | Hour | Days | Building | Room No. | Instructor |
|--|--|---------|--------|----------------------|----------|------------|------------------|
| ANCIENT LANGUAGES—Cont. | | | | | | | |
| of high school foreign language will be permitted to enroll in first year work, but will receive credit only if he makes at least a B standing in this course. | | | | | | | |
| LOWER DIVISION REQUIREMENTS—See Page 17. | | | | | | | |
| 5 or 17 | {Prose Selections (Open to freshmen with 3 or 4 units of high school work.) | 3 | 4 | M-S | A | 303 | Skiles |
| | {Medieval Latin (Open to freshmen with 3 or 4 units of high school Latin.) | 3 | 4 | M-S | A | 303 | Skiles |
| *51a or 53 | {Beginning Greek Homer | 3 3 | | By Appt. By Appt. | | | |
| 70 | {Greek Mythology (Either 70 or 120 will be given.) | 2 | 5 | M-Th | A | 303 | Skiles |
| Courses open only to Upper and Graduate Students: | | | | | | | |
| 120 | {Greek Civilization (Either 70 or 120 will be given.) | 2 | 5 | M-Th | A | 303 | Skiles |
| 150 | {The Teaching of Latin | 3 | 2 | M-S | A | 303 | |
| C150 | {The Teaching of Latin (Demonstration) | 0 | 3 | M-F | A | 303 | |
| 151a-e | {Independent Work in Ancient Languages | 3 | | By Appt. | | | |
| Courses open only to Graduate Students: | | | | | | | |
| 200 | {Research in the Teaching of Classical Languages | 3 | 8 | M-F | A | 303 | Skiles |
| 202 or 203 | {The Works of Vergil Roman Comedy | 3 3 | 4 4 | M-S M-S | A A | 303 303 | Skiles Skiles |
| Note.—Only one reading course in Latin 5 or 17 or 202 or 203 will be given. | | | | | | | |

ANTHROPOLOGY

W. S. Webb, Head of Department, Pence Hall, 101.

UPPER DIVISION REQUIREMENTS—Junior and Senior Years

Requirements in the Field of Concentration: Forty credits of advanced work in the Social or Biological Sciences groups during the junior and senior years, including the major work.

Requirements for a Major. Prerequisites: Anthropology 1 and 2; Sociology or Geography 3a. **Required:** A minimum of 24 credits of advanced work including Anthropology 105, 106 or 107; 115; 125; 150a-b.

LOWER DIVISION REQUIREMENTS—See Page 17.

| | | | | | | | |
|--|---|---|---|----------|--------|-----|------------|
| *1 | {Introduction to Physical Anthro. | 3 | 2 | M-S | McVH | 111 | Snow |
| *2 | {Introduction to Cultural Anthropology | 3 | 4 | M-S | McVH | 111 | Essene |
| 10a | {Field Work in Anthropology..... | 3 | | By Appt. | Museum | | Haag |
| 10b | {Field Work in Anthropology..... | 3 | | By Appt. | Museum | | Haag |
| 60 | {Primitive Inventions | 3 | 2 | M-S | Pence | 208 | Essene |
| Open only to Upper Division and Graduate Students: | | | | | | | |
| 106 | {Ethnology of Europe | 2 | 4 | MTWF | BS | 200 | Funkhouser |
| 110a | {Field Methods in Anthropology | 3 | | By Appt. | Museum | | Haag |
| 110b | {Field Methods in Anthropology | 3 | | By Appt. | Museum | | Haag |
| 125 | {Adv. Physical Anthropology..... | 3 | 4 | MWF | BS | 313 | Snow |

* Open to Freshmen.

COLLEGE OF ARTS AND SCIENCES—Continued

| Course No. | Subject | Credits | Hour | Days | Building | Room No. | Instructor |
|------------|---------|---------|------|------|----------|----------|------------|
|------------|---------|---------|------|------|----------|----------|------------|

ART

Edward W. Rannells, Head of Department, Biological Sciences, 219-222.

UPPER DIVISION REQUIREMENTS—Junior and Senior Years

Requirements in the Field of Concentration: 40 credits in advanced work in the field of Literature, Philosophy, and the Arts during the junior and senior years, including the major work.

Requirements for a Major. Prerequisites: Art 61a (drawing), 62 (design), 35, 36 (history of art). **Required:** A minimum of 26 credits of advanced work in art—12 credits in studio courses, 12 credits in history of art, 2 credits in the senior seminar, plus a comprehensive examination in the senior year.

LOWER DIVISION REQUIREMENTS—See Page 17.

| | | | | | | | |
|--|--|---|-----------------------------------|-------|----|-----|----------|
| *A ₁ | An Introduction to the Humanities Through the Study of Art | 2 | 4 | MTThF | BS | 211 | Callihan |
| *A ₂ | An Introduction to the Humanities Through the Study of Art | 2 | 6 | MTThF | BS | 211 | Callihan |
| 10a | Public School Art | 2 | { 7, 8, 9 }and 3 hrs. by Appt. | TTh | BS | 315 | Fitz |
| 10b | Public School Art | 2 | 7, 8 | M-Th | E | 170 | Haines |
| *C61a | Elementary Drawing | 2 | { 7, 8, 9 }and 3 hrs. by Appt. | TTh | BS | 213 | Barnhart |
| 62 | Basic Design | 3 | { 7, 8, 9 }and 6 hrs. by Appt. | MWF | BS | 214 | Barnhart |
| 64a, b | Intermediate Design | 3 | By Appt. | | BS | 214 | Barnhart |
| 65a, b | Painting | 3 | { 7, 8, 9 }and 3 hrs. by Appt. | MWF | BS | 316 | Fitz |
| Courses open only to Upper Division and Graduate Students: | | | | | | | |
| 157 | Art in the Secondary Schools | 3 | 1 | M-S | BS | 212 | Rannells |
| 165a, b | Intermediate Painting | 3 | { 7, 8, 9 }and 6 hrs. by Appt. | MWF | BS | 316 | Fitz |

BACTERIOLOGY

M. Scherago, Head of Department, Biological Sciences, 104.

UPPER DIVISION REQUIREMENTS—Junior and Senior Years

Requirements in the Field of Concentration: Forty credits of advanced work in the field of Biological Sciences during the junior and senior years, including the major work.

Requirements for a Major. Prerequisites: Chemistry 1a, b; Bact. 2b or 52 and 104.

Required: Two credits in Seminar and a minimum of 14 additional credits of advanced work in Bacteriology, including Bact. 125a and b.

| | | | | | | | |
|-----------------|----------------------------------|---|------------------|-------|----|-----|----------------|
| 52 ₁ | Principles of Bacteriology, Lec. | 4 | 1 | MWFS | BS | 124 | Edwards |
| 52 ₂ | Principles of Bacteriology, Lab. | | 2, 3 | MWFS | BS | 208 | Scharfschwerdt |
| 52 ₃ | Principles of Bacteriology, Lab. | 4 | 7, 8 | MWThF | BS | 208 | Scharfschwerdt |
| 56 ₁ | Bacteriology of Foods, Lec. | | 1 | MTThF | BS | 125 | Weaver |
| 56 ₂ | Bacteriology of Foods, Lab. | 4 | { 1, 2 } 2, 3 | WS | BS | 207 | Muedeking |
| 57 ₁ | Bact. of Water & Sewage, Lec. | | 3 | TTh | BS | 207 | Muedeking |
| 57 ₂ | Bact. of Water & Sewage, Lab. | 4 | 4, 5 | MWFS | BS | 124 | Weaver |
| | | | 4, 5 | MTThS | BS | 207 | Muedeking |

* Open to Freshmen.

COLLEGE OF ARTS AND SCIENCES—Continued

| Course No. | Subject | Credits | Hour | Days | Building | Room No. | Instructor |
|--|-----------------------------------|---------|------|-------|----------|----------|----------------------|
| BACTERIOLOGY—Continued | | | | | | | |
| Courses open only to Upper Division and Graduate Students: | | | | | | | |
| 103 ₁ | Pathogenic Bacteriology, Lec.} | 4 | 5 | MTWF | BS | 124 | Humphries |
| 103 ₂ | Pathogenic Bacteriology, Lab.} | | 7, 8 | MWF | BS | 206 | Humphries |
| | | | 5 | ThS | BS | 206 | Humphries |
| 104 | Applied Bacteriology | 2 | By | Appt. | | 119 | Scharfschwerdt |
| 110a | Laboratory Diagnosis | 3 | 1, 2 | M-S | BS | 206 | Hotchkiss |
| 110b | Laboratory Diagnosis | 3 | 3, 4 | M-S | BS | 206 | Hotchkiss |
| 111 ₁ | General Pathology, Lec.} | 4 | 4 | MWThF | BS | 124 | Scherago |
| 111 ₂ | General Pathology, Lab.} | | 4, 5 | TS | BS | 210 | Scherago |
| | | | 5 | MWThF | BS | 210 | Scherago |
| 115a-f | Independent Work | 3 | By | Appt. | | 103 | Staff |
| 120a | Hospital Laboratory Practice.... | 4 | By | Appt. | | | G. S. Hospital |
| 120b | Hospital Laboratory Practice.... | 6 | By | Appt. | | | G. S. Hospital |
| Courses open only to Graduate Students: | | | | | | | |
| 201a-f | Research in Bacteriology, Lab... | 5 | By | Appt. | | 103 | Sr. Staff |
| 210 | Clinical Mycology | 2 | By | Appt. | | 110 | |
| 220 | History of Bacteriology | 2 | By | Appt. | | 104a | Weaver |
| 222 | Advanced General Bacteriology | 4 | By | Appt. | | 104a | Weaver and Muedeking |
| 224 | Disinfectants and Antibiotics.... | 3 | By | Appt. | | 110 | Hotchkiss |
| 270 | Electron Microscopy | 3 | By | Appt. | | B1 | Edwards |
| 272 | Viruses and Rickettsiae | 4 | By | Appt. | | B1 | Edwards |
| BOTANY | | | | | | | |

Herbert P. Riley, Head of Department, Norwood Hall.

UPPER DIVISION REQUIREMENTS—Junior and Senior Years

Requirements in the Field of Concentration: Forty credits of advanced work in the field of Biological Sciences during the junior and senior years, including the major work.

Requirements for a Major. Prerequisites: Botany 1b or 8b. **Required:** A minimum of 20 credits of advanced work in Botany and the passing of a comprehensive examination covering chiefly the fields of morphology, taxonomy, and physiology.

LOWER DIVISION REQUIREMENTS—See Page 17.

| | | | | | | | |
|---|-----------------------------------|---|---|------|------|-----|----------|
| *1a ₁ | General Botany, Lec.} | 3 | 2 | M-Th | NorH | 202 | McInteer |
| *1a ₂ | General Botany, Lab.} | | | | | | |
| *1a ₃ | General Botany, Lab.} | | | | | | |
| *1b ₁ | General Botany, Lec.} | 3 | 3 | M-Th | NorH | 203 | Riley |
| *1b ₂ | General Botany, Lab.} | | | | | | |
| Prerequisite to Botany 1b: Botany 1a, 8a, or 25. | | | | | | | |
| *25 | General Plant Biology | 3 | 3 | M-S | NorH | 202 | |
| No prerequisite to Botany 25. | | | | | | | |
| 30 | Introduction to Cytogenetics | 3 | 4 | M-S | NorH | 203 | Riley |
| Prerequisite: 6 credits in the biological sciences. | | | | | | | |

* Open to Freshmen.

COLLEGE OF ARTS AND SCIENCES—Continued

| Course No. | Subject | Credits | Hour | Days | Building | Room No. | Instructor |
|--|-----------------------------------|---------|------|----------|----------|----------|------------|
| BOTANY—Continued | | | | | | | |
| Courses open only to Upper Division and Graduate Students: | | | | | | | |
| 103b | Plant Physiology | 3 | | By Appt. | NorH | 206 | |
| Prerequisite: Botany 103a. | | | | | | | |
| 130 | Introduction to Cytogenetics..... | 3 | 4 | M-S | NorH | 203 | Riley |
| Prerequisite: Same as for Botany 30. | | | | | | | |
| Credit will not be given for both Botany 30 and 130. | | | | | | | |
| CHEMISTRY | | | | | | | |

Lyle R. Dawson, Head of Department, Kastle Hall, 105A.

UPPER DIVISION REQUIREMENTS—Junior and Senior Years

Requirements in the Field of Concentration: Forty credits of advanced work in the field of Physical Sciences during the junior and senior years, including the major work.

Requirements for a Major. Prerequisites: 1a, 1b, 21a, 21b, and mathematics through the calculus. **Required:** 130a, 130b, 140a, 140b, 144a, 144b, 110a, 110b, 111, 133, 188a, 188b, and eleven credits to be chosen from the field of physical sciences.

(For prerequisites see Catalog.)

LOWER DIVISION REQUIREMENTS—See Page 17.

| | | | | | | | | |
|-------------------|--|-----|------------|----------|-------|-----|-----------|-----------|
| *1a | General Chemistry, Lec. | 5 | 2 | MTThF | KH | 201 | Staff | |
| *1a | General Chemistry, Rec. | | | WS | KH | 201 | Staff | |
| *1a | General Chemistry, Lab. | | | 3, 4 | MWFS | KH | 101 | Staff |
| *C1b ₁ | General Chemistry, Lec. | 3.4 | 3 | MWF | KH | 201 | Staff | |
| *C1b ₁ | General Chemistry, Rec. | | | S | KH | 201 | Staff | |
| *C1b ₁ | General Chemistry, Lab. | | | 1, 2, 3 | TTh | KH | 101 | Staff |
| *C1b ₂ | General Chemistry, Lec. | 3.4 | 5 | MWF | KH | 201 | Staff | |
| *C1b ₂ | General Chemistry, Rec. | | | S | KH | 201 | Staff | |
| *C1b ₂ | General Chemistry, Lab. | | | 4, 5, 6 | TTh | KH | 101 | Staff |
| *C1b ₃ | General Chemistry, Lec. | 3.4 | 8, 9 | MW | KH | 201 | Staff | |
| *C1b ₃ | General Chemistry, Rec. | | | 8 | F | KH | 201 | Staff |
| *C1b ₃ | General Chemistry, Lab. | | | 8, 9, 10 | TTh | KH | 101 | Staff |
| *3b | Chemistry for Nurses, Lec. | 2.7 | 5 | MWF | KH | 200 | Staff | |
| *3b | Chemistry for Nurses, Lab. | | | 4, 5 | TTh | KH | B1 | Staff |
| *20 | Qualitative Analysis, Lec. and Rec. | 4 | 5 | MTThF | KH | 214 | Staff | |
| *20 ₁ | Qualitative Analysis, Lab. | 4 | 1, 2, 3, 4 | MW | KH | B1 | Staff | |
| *20 ₂ | Qualitative Analysis, Lab. | | | TTh | KH | B1 | Staff | |
| 21a | Quantitative Analysis, Lec. | 5 | 1 | MTThF | KH | 111 | Stewart | |
| 21a | Quantitative Analysis, Lab. | | | 2, 3, 4 | MTThF | KH | 113 | Stewart |
| 21b | Quantitative Analysis, Lec. | 4 | 5 | MTThF | KH | 111 | Watters | |
| 21b | Quantitative Analysis, Lab. | | | 6, 7 | MTThF | KH | 113 | Watters |
| 30a | Organic Chem., Lec. | 5 | 2 | M-S | KH | 214 | Barkenbus | |
| 30a | Organic Chem., Lab. | | | 3, 4 | MTThF | KH | 215 | Barkenbus |
| 37 | Organic Chem. (non-majors), Lec. | 4 | 1 | M-S | KH | 214 | Estes | |
| 37 | Organic Chem., Lab. | | | 2, 3 | TTh | KH | 215 | Estes |

* Open to Freshmen.

COLLEGE OF ARTS AND SCIENCES—Continued

| Course No. | Subject | Credits | Hour | Days | Building | Room No. | Instructor |
|--|---|---------|------------------|-------|----------|----------|------------|
| CHEMISTRY—Continued | | | | | | | |
| Courses open only to Upper Division and Graduate Students: | | | | | | | |
| 110a | Adv. Inorganic Chemistry | 2 | 2 | MTThF | KH | B14 | Leader |
| 115a | Nuclear Chemistry | 2 | 4 | TWTS | KH | B14 | Leader |
| 122 | Instrumental Analysis, Lec. | 3 | 2 hrs. by Appt. | KH | KH | B13 | Watters |
| 122 | Instrumental Analysis, Lab. | | 2 hrs. by Appt. | | | | |
| 130a | Organic Chem., Lec. | 5 | 2 | M-S | KH | 214 | Barkenbus |
| 130a | Organic Chem., Lab. | | 3, 4 | MTThF | KH | 215 | Barkenbus |
| 133 | Qual. Org. Anal., Lec. and Lab. | 3 | 18 hrs. by Appt. | KH | KH | 215 | Barkenbus |
| 140a | Physical Chemistry | 3 | 5 | M-S | KH | B14 | Dawson |
| 144a | Physical Chem., Lab. | 2 | 6, 7, 8 | MTThF | KH | B17 | Leader |
| 181 | Chemical Literature | 1 | 2 hrs. by Appt. | KH | KH | 111 | Stewart |
| Courses open only to Graduate Students: | | | | | | | |
| 232 | Stereoisomerism of Carbon Compounds | 3 | 5 | M-S | KH | 209 | Estes |
| 290a-h | Research in Chemistry | 5 | 15 hrs. by Appt. | KH | KH | Arr. | Staff |
| ECONOMICS | | | | | | | |

Economics Majors see Professor L. H. Carter, College of Commerce.

UPPER DIVISION REQUIREMENTS—Junior and Senior Years.

Requirements in the Field of Concentration: Forty credits of advanced work in the field of Social Studies during the junior and senior years, including the major work.

Requirements for a Major. Prerequisites: Two courses in Economics, including Economics 1. **Required:** A minimum of 21 credits of advanced work in Economics, including Economics 102, 104 and 105; the remainder of credits to be selected from the Arts and Sciences list of Economics courses numbered above 100. In addition tutorial course 16 must be taken in the senior year to prepare for the required comprehensive examination.

LOWER DIVISION REQUIREMENTS—See Page 17.

| | | | | | | | |
|--|-------------------------------------|--------|----------|-------|----|-----|-----------|
| 1 ₁ | Principles of Economics | 3 | 1 | M-S | WH | 103 | Ellis |
| 1 ₂ | Principles of Economics | 3 | 2 | M-S | WH | 103 | Tolman |
| 1 ₃ | Principles of Economics | 3 | 5 | M-S | WH | 103 | Tolman |
| *2 | Economic History of Europe | 3 | 2 | M-S | WH | 101 | Jennings |
| *3 | Economic History of the U. S. ... | 3 | 3 | M-S | WH | 101 | Jennings |
| 7a | Principles of Accounting, Rec. ... | 4 | 7 | MTThF | WH | 103 | Ellis |
| | Principles of Accounting, Lab. ... | | 8, 9 | MTThF | WH | 306 | Ellis |
| 16 | Tutorial Work in Economics.... | 1 | By Appt. | WH | | | Carter |
| Courses open only to Upper Division and Graduate Students: | | | | | | | |
| 102 | Labor Problems | 3 | 2 | M-S | WH | 102 | Carter |
| | (Prereq. Econ. 1) | | | | | | |
| 104 | Public Finance | 3 | 2 | M-S | WH | 205 | Sullivan |
| | (Prereq. Econ. 1) | | | | | | |
| 105 | Money and Banking | 3 | 4 | M-S | WH | 303 | Carpenter |
| | (Prereq. Econ. 1) | | | | | | |
| 107 | Statistical Method, Rec., Lab. | 3 | 5, 6 | MTThF | WH | 401 | Carpenter |
| 112a-f | Individual Work in Economics | each 1 | By Appt. | | | | Staff |
| 115 | Value and Distribution Theory.. | 3 | 5 | M-S | WH | 205 | Sullivan |
| | (Prereq. Econ. 1) | | | | | | |

* Open to Freshmen.

COLLEGE OF ARTS AND SCIENCES—Continued

| Course No. | Subject | Credits | Hour | Days | Building | Room No. | Instructor |
|--|--------------------------------------|---------|-----------|----------|----------|----------|------------|
| ECONOMICS—Continued | | | | | | | |
| Courses open only to Graduate Students: | | | | | | | |
| 202a, b | Seminar | 1 | | By Appt. | WH | 205 | Sullivan |
| 212a-f | Research Problems in Economics | 1 | | By Appt. | WH | | Staff |
| EDUCATION | | | | | | | |
| A student in the College of Arts and Sciences may elect toward the A.B. and B.S. degree a total of 30 credits from other colleges of the University. | | | | | | | |
| ENGINEERING | | | | | | | |
| A student in the College of Arts and Sciences may elect toward the A.B. and B.S. degree a total of 30 credits from other colleges of the University. | | | | | | | |
| ENGLISH | | | | | | | |
| George K. Brady, Acting Head of Department, McVey Hall, 219. | | | | | | | |
| UPPER DIVISION REQUIREMENTS—Junior and Senior Years. | | | | | | | |
| Requirements in the Field of Concentration: Forty credits of advanced work in the field of Literature, Philosophy, and the Arts, including a minimum of eighteen hours of advanced work in English. | | | | | | | |
| Requirements for a Major. Prerequisites: English 1a, 1b, 3a, 3b. Required: A minimum of eighteen semester hours of advanced work in English. | | | | | | | |
| LOWER DIVISION REQUIREMENTS—See Page 17. | | | | | | | |
| *D ₁ | English Composition | 0 | 1 | M-S | McVH | 200 | |
| *1a ₁ | English Composition | 3 | 2 | M-S | McVH | 209 | |
| *1a ₂ | English Composition | 3 | 3 | M-S | McVH | 209 | |
| *1a ₃ | English Composition | 3 | 4 | M-S | McVH | 209 | |
| *1a ₄ | English Composition | 3 | 5 | M-S | McVH | 209 | |
| *1a ₅ | English Composition | 3 | 2 | M-S | McVH | 210 | |
| *1a ₆ | English Composition | 3 | 3 | M-S | McVH | 207 | |
| *1a ₇ | English Composition | 3 | 4 | M-S | McVH | 204 | |
| *1a ₈ | English Composition | 3 | 5 | M-S | McVH | 210 | |
| *1a ₉ | English Composition | 3 | 1:00-2:00 | M-F | McVH | 210 | |
| *1a ₁₀ | English Composition | 3 | 2:10-3:10 | M-F | McVH | 210 | |
| *1a ₁₁ | English Composition | 3 | 1 | M-S | McVH | 206 | |
| *1a ₁₂ | English Composition | 3 | 1 | M-S | McVH | 209 | |
| *1b ₁ | English Composition | 3 | 2 | M-S | McVH | 206 | |
| *1b ₂ | English Composition | 3 | 3 | M-S | McVH | 200 | |
| *1b ₃ | English Composition | 3 | 4 | M-S | McVH | 231 | |
| *1b ₄ | English Composition | 3 | 1:00-2:00 | M-F | McVH | 230 | |
| *6 | The Essentials of Speech | 3 | 4 | M-S | McVH | 210 | Sterrett |
| Not open to Freshmen: | | | | | | | |
| 3a ₁ | History of English Literature.... | 3 | 1:00-2:00 | M-F | McVH | 204 | Brady |
| 3a ₂ | History of English Literature.... | 3 | 1 | M-S | McVH | 204 | Ward |
| 3a ₃ | History of English Literature.... | 3 | 2 | M-S | McVH | 206 | Cooke |
| 3b ₁ | History of English Literature.... | 3 | 3 | M-S | McVH | 230 | Farquhar |
| 3b ₂ | History of English Literature.... | 3 | 4 | M-S | McVH | 200 | Knight |
| 3b ₃ | History of English Literature.... | 3 | 2 | M-S | McVH | 204 | Faust |
| 30 ₁ | Business English | 2 | 1 | MTThF | McVH | 207 | Cutler |
| 30 ₂ | Business English | 2 | 2 | MTThF | McVH | 207 | Cutler |
| 30 ₃ | Business English | 2 | 4 | MTThF | McVH | 207 | Cutler |

* Open to Freshmen.

COLLEGE OF ARTS AND SCIENCES—Continued

| Course No. | Subject | Credits | Hour | Days | Building | Room No. | Instructor |
|--|---|---------|------|------|----------|----------|------------|
| ENGLISH—Continued | | | | | | | |
| 32 | Voice Development | 3 | 1 | M-S | Theater | | Briggs |
| C37 | Stage Productions in School and Community | 3 | 2 | M-S | Theater | | Briggs |
| 38a | Oral Interpretation | 3 | 3 | M-S | McVH | 210 | Sterrett |
| Courses open only to Upper Division and Graduate Students: | | | | | | | |
| 106a | English Romantic Poetry | 3 | 3 | M-S | McVH | 204 | Ward |
| 116 | The Contemporary Drama | 3 | 1 | M-S | McVH | 230 | Farquhar |
| 123b | American Literature after 1830.. | 3 | 2 | M-S | McVH | 200 | Knight |
| 153 | The Drama of the Restoration and Eighteenth Century | 3 | 4 | M-S | McVH | 206 | Cooke |
| Courses open only to Graduate Students: | | | | | | | |
| 210 | Seminar | 3 | 5 | M-F | McVH | 204 | Brady |
| GEOGRAPHY | | | | | | | |

J. R. Schwendeman, Head of Department, Biological Sciences, 321.

UPPER DIVISION REQUIREMENTS—Junior and Senior Years.

Requirements in the Field of Concentration: Forty credits, including the major work, in advanced courses in the field of Social Studies and certain closely allied physical science fields.

Requirements for a Major. Prerequisites: Geography 1, 2, 3a-b, or 10. **Requirements:** A minimum of 18 credits of advanced work in Geography varied according to the curriculum elected by the student, but including at least three credits in Geography 132a-d.

LOWER DIVISION REQUIREMENTS—See Page 17.

| | | | | | | | |
|--|--|---|--|------|----|-----|-------------|
| *1 | Elements of Geography | 3 | 1 | M-S | BS | 224 | Schwendeman |
| *3a | Societies Around the World..... | 3 | 3 | M-S | BS | 200 | |
| *3b | Societies Around the World (Prerequisite: Geog. 3a)..... | 3 | 2 | M-S | BS | 200 | Schwendeman |
| *10 ₁ | Economic Geography Survey | 3 | 2 | M-S | BS | 224 | Parmenter |
| *10 ₂ | Economic Geography Survey | 3 | 3 | M-S | BS | 224 | Parmenter |
| Courses open only to Upper Division and Graduate Students: | | | | | | | |
| 100 | Regional Geog. of Anglo America | 2 | 5 | M-Th | BS | 224 | |
| 101 | Geography of Kentucky | 2 | 4 | M-Th | BS | 224 | Schwendeman |
| 133a | Special Problems | 1 | (for those desiring an additional credit in Geog. 100) | | | | |
| 133b | Special Problems | 1 | (for those desiring an additional credit in Geog. 101) | | | | Schwendeman |
| GEOLOGY | | | | | | | |

A. C. McFarlan, Head of Department, Miller Hall, 209.

UPPER DIVISION REQUIREMENTS—Junior and Senior Years

Requirements in the Field of Concentration: Forty credits in the field of Physical and Biological Science, including the major work, in courses not open to freshmen.

Requirements for a Major: Geology 10a, b; 30a, b; 101a, b; 106a, b; 107a, b; 123a, b; 118a or 118b and 124a, b. **Field work:** A summer field course, Geology 118a-d, is re-

* Open to Freshmen.

COLLEGE OF ARTS AND SCIENCES—Continued

| Course No. | Subject | Credits | Hour | Days | Building | Room No. | Instructor |
|---|---------------------------------------|---------|------------------------|------|----------|----------|----------------------|
| GEOLOGY—Continued | | | | | | | |
| quired of major students for graduation. Local field work is offered throughout the year. | | | | | | | |
| LOWER DIVISION REQUIREMENTS—See Page 17. | | | | | | | |
| *50a | Outlines of Geology | 3 | 2 | M-S | MH | 108 | Hamilton |
| *50b | Outlines of Geology | 3 | 3 | M-S | MH | 108 | Hamilton |
| *23a | El. Field Work in Regional Geol. | 8 | Field camp in Colorado | | | | McFarland and Nelson |
| Courses open only to Upper Division and Graduate Students: | | | | | | | |
| 118a-d | Field Work in Regional Geology | 8 | Field camp in Colorado | | | | McFarland and Nelson |
| GERMAN LANGUAGE AND LITERATURE | | | | | | | |

A. E. Bigge, Head of Department, Miller Hall, 303A.

UPPER DIVISION REQUIREMENTS—Junior and Senior Years

Requirements in the Field of Concentration: Forty credits in the field of Literature, Philosophy and the Arts, including the major work, in courses not open to freshmen.

Requirements for a Major. Prerequisites: Junior standing, 1a, 1b, 2a, 2b. **Required:** A minimum of 18 credits of work, independent of junior and senior tutorial courses. Majors must also pass a final comprehensive examination.

Note.—No credit will be given for German 1a until German 1b has been completed. The student who presents one unit of high school foreign language will be permitted to enroll in first year work for full credit. The student who presents two units of high school foreign language will be permitted to enroll in first year work, but will receive credit only if he makes at least a B standing in this course.

LOWER DIVISION REQUIREMENTS—See Page 17.

| | | | | | | | |
|--|---|--------|----------|-----|----|------|----------|
| *1a ₁ | Elementary German | 3 | 1 | M-S | MH | 302 | Odor |
| *1a ₂ | Elementary German | 3 | 4 | M-S | MH | 302 | Bigge |
| *1b ₁ | Elem. German (Prereq. 1a)..... | 3 | 3 | M-S | MH | 302 | Hegeman |
| *1b ₂ | Elem. German (Prereq. 1a)..... | 3 | 2 | M-S | MH | 302 | Whitaker |
| 2a | Translation and Rapid Reading (Prereq. 1b) | 3 | 3 | M-S | MH | 310 | Odor |
| 10a | Elementary Conversation and Composition (Prereq. 1b)..... | 3 | 4 | M-S | MH | 303a | Ubben |
| 20b | Readings in Medical German (Prereq. 20a) | 3 | 3 | M-S | MH | 308 | Ubben |
| 21b | Readings in Chemical German (Prereq. 21a) | 3 | 4 | M-S | MH | 310 | Hegeman |
| 52 | Introduction to Classical and 19th Century German Literature (Prereq. 2b) | 3 | 5 | M-S | MH | 302 | Bigge |
| Courses open only to Upper Division and Graduate Students: | | | | | | | |
| 105a-f | Independent Work in German | each 3 | By Appt. | | MH | 314b | Odor |
| 106a | Advanced Scientific German (Prereq. 20b or 21b) | 3 | By Appt. | | MH | 314a | Whitaker |

* Open to Freshmen.

COLLEGE OF ARTS AND SCIENCES—Continued

| Course No. | Subject | Credits | Hour | Days | Building | Room No. | Instructor |
|------------|-----------------------------------|---------|------|-------|----------|----------|------------|
| | GERMAN LANG. & LIT.—Cont. | | | | | | |
| 112 | Proseminar in Kleist (Prereq. 53) | 2 | | | | | |
| 120a | Junior Tutorial | 1 | By | Appt. | MH | 314a | Whitaker |
| 130a | Senior Tutorial | 3 | By | Appt. | MH | 314c | Hegeman |
| | HISTORY | | | | | | |

Thomas D. Clark, Head of Department, Frazee Hall, 203.

UPPER DIVISION REQUIREMENTS—Junior and Senior Years

Requirements in the Field of Concentration: Forty credits of advanced work in the field of Social or Humanistic Studies, during the junior and senior years, including the major work.

Requirements for a Major. Prerequisites: History 2a and 2b, or 4a and 4b, or 8a and 8b; 5a and 5b, or 10a and 10b. **Required:** A minimum of 18 credits of advanced courses in history plus the Senior Seminar.

LOWER DIVISION REQUIREMENTS—See Page 17.

| | | | | | | | |
|-------------------|--|---|---|-----|----|-----|---------|
| 2a | History of British People to the Restoration | 3 | 1 | M-S | FH | 301 | Cone |
| *4b ₁ | Modern Eur. since the Fr. Rev. | 3 | 2 | M-S | FH | 204 | Lunde |
| *4b ₂ | Modern Eur. since the Fr. Rev. | 3 | 4 | M-S | FH | 204 | Lunde |
| *8a ₁ | European Civ. to 1815 | 3 | 1 | M-S | FH | 201 | Kirwan |
| *8a ₂ | European Civ. to 1815 | 3 | 5 | M-S | FH | 201 | |
| *8b ₁ | European Civ. since 1815 | 3 | 3 | M-S | FH | 204 | |
| *8b ₂ | European Civ. since 1815 | 3 | 6 | M-S | FH | 204 | |
| *10a ₁ | American Civ., 1607-1865 | 3 | 1 | M-S | FH | 202 | Wall |
| *10a ₂ | American Civ., 1607-1865 | 3 | 3 | M-S | FH | 201 | Hopkins |
| *10b ₁ | American Civ. since 1865 | 3 | 2 | M-S | FH | 301 | Gilliam |
| *10b ₂ | American Civ. since 1865 | 3 | 4 | M-S | FH | 201 | |

Note.—History 4b duplicates History 8b and Pol. Sci. 8b; History 5a duplicates History 10a and Pol. Sci. 10a; History 5b duplicates History 10b and Pol. Sci. 10b; History 8a duplicates Pol. Sci. 8a; History 10a duplicates History 5a and Pol. Sci. 10a, 51; History 10b duplicates History 5b and Pol. Sci. 10b, 51.

| Course No. | Subject | Credits | Hour | Days | Building | Room No. | Instructor |
|------------|--|---------|------|------|----------|----------|-------------|
| | Courses open only to Upper Division and Graduate Students: | | | | | | |
| 100a | The Diplomatic and Foreign Policy of the U. S. to 1898 | 3 | 2 | M-S | FH | 202 | Hopkins |
| 105 | Colonial America | 3 | 4 | M-S | FH | 301 | Gilliam |
| 120 | Europe in the Twentieth Century | 3 | 2 | M-S | FH | 201 | |
| 124a | Social and Cultural History of the U. S. to 1865 | 3 | 3 | M-S | FH | 202 | England |
| 139 | British History since 1815 | 3 | 5 | M-S | FH | 301 | Cone |
| C190b | The Far East since 1900 | 3 | 4 | M-S | FH | 202 | Vandenbosch |
| | Courses open only to Graduate Students: | | | | | | |
| C365 | The American Civil War Seminar | 2 | 7, 8 | MW | FH | 202 | Eaton |
| C320a | Origins of World War I Seminar | 2 | 7, 8 | TTh | FH | 204 | |

* Open to Freshmen.

COLLEGE OF ARTS AND SCIENCES—Continued

| Course No. | Subject | Credits | Hour | Days | Building | Room No. | Instructor |
|------------|---------|---------|------|------|----------|----------|------------|
|------------|---------|---------|------|------|----------|----------|------------|

HOME ECONOMICS

A student in the College of Arts and Sciences may elect toward the A.B. and B.S. degree a total of 30 credits from other colleges of the University.

HYGIENE AND PUBLIC HEALTH

J. S. Chambers, Head of Department, Health Building, 105.

UPPER DIVISION REQUIREMENTS—Junior and Senior Years

Requirements in the Field of Concentration: Forty credits in the field of Biological Sciences and Social Studies (Sociology, Social Work, Psychology, Political Science), including the major work, in the courses not open to freshmen.

Requirements for a Major. Prerequisites: 12 credits in the Biological Sciences. **Required:** A minimum of 15 credits of advanced work in Hygiene and Public Health.

LOWER DIVISION REQUIREMENTS—See Page 17.

| | | | | | | | |
|--------|--|---|---|----------|------|-----|----------|
| *9 | Fundamentals of Health | 2 | 3 | M-Th | McVH | 111 | Hamilton |
| | Courses open only to Upper Division and Graduate Students: | | | | | | |
| 100a | Public Health | 3 | 4 | M-S | BS | 125 | Hamilton |
| 100b | Public Health | 3 | 3 | M-S | BS | 125 | Heinz |
| 110 | Health Education | 3 | 5 | M-S | BS | 125 | Heinz |
| 111a-d | Independent Work in Hygiene and Public Health | 3 | | By Appt. | HB | 104 | Heinz |
| 115 | Communicable Diseases | 3 | 5 | M-S | BS | 125 | Hamilton |

JOURNALISM

Niel Plummer, Head of Department, McVey Hall, 55.

UPPER DIVISION REQUIREMENTS—Junior and Senior Years

Requirements in the Field of Concentration: Forty credits in courses not open to freshmen, including the major work, in either the field of Social Studies or that of Literature, Philosophy, and the Arts, during junior and senior years.

Requirements for a Major. Prerequisites: Journalism 2, 21, and 22. **Required:** Journalism 100a, b, 101, 105, 106, 107, 108, 109, 123, and 127.

The Degree of A.B. in Journalism: Four sequences leading to the degree of A.B. in Journalism are outlined in the general catalog.

Comprehensive Examinations: Majors and candidates for the degree in Journalism are required to pass a final comprehensive examination at the end of senior year.

LOWER DIVISION REQUIREMENTS—See Page 17.

| | | | | | | | |
|------|--|---|------|-------|------|----|------------|
| 10 | Survey of Journalism | 3 | 4 | M-S | McVH | 54 | McLaughlin |
| 21 | Etymology | 3 | 4 | M-S | | | Plummer |
| 22 | Principles of News Writing | 3 | 3 | M-S | McVH | 54 | Moore |
| | Courses open only to Upper Division and Graduate Students: | | | | | | |
| 100b | News Reporting | 3 | 3 | M-S | McVH | 66 | McCauley |
| 101 | Copyreading and Editing | 3 | 4 | MTh | McVH | 66 | McCauley |
| | | | 4, 5 | TWFS | McVH | 66 | McCauley |
| 105 | Law of the Press | 2 | 3 | MTWTh | McVH | 53 | Plummer |
| 106 | Influence of the Newspaper | 3 | 5 | M-S | McVH | 53 | Moore |
| 108 | History of Journalism | 3 | 2 | M-S | McVH | 54 | Portmann |
| 110 | Supervision of High School Publications | 3 | 4 | M-S | McVH | 53 | Portmann |
| 112 | Critical Writing for the Press.. | 3 | 5 | M-S | McVH | 54 | McLaughlin |

* Open to Freshmen.

COLLEGE OF ARTS AND SCIENCES—Continued

| Course No. | Subject | Credits | Hour | Days | Building | Room No. | Instructor |
|------------|---------|---------|------|------|----------|----------|------------|
|------------|---------|---------|------|------|----------|----------|------------|

LAW

A student in the College of Arts and Sciences may elect toward the A.B. degree a total of 30 credits from other colleges of the University. However, election of law courses is restricted. For the combined Arts-Law course see the University catalog.

LIBRARY SCIENCE

Robert H. Deily, Head of Department, University Library, 313.

UPPER DIVISION REQUIREMENTS—Junior and Senior Years.

Requirements in the Field of Concentration: Forty credits of advanced work in the field of Literature, Philosophy and the Arts (or acceptable equivalent), including the major, during the junior and senior years.

Requirements for a Major. Junior and senior standing. **Required:** The professional curriculum of 30 credits. With the approval of the Head of the Department a student may substitute one course outside the Library Science Department, e.g., Education 186, Visual Teaching, for one of the electives.

LOWER DIVISION REQUIREMENTS—See Page 17.

| Course No. | Subject | Credits | Hour | Days | Building | Room No. | Instructor |
|--|--|---------|------|----------------|----------|----------|------------|
| Courses open only to Upper Division and Graduate Students: | | | | | | | |
| 101a-d | Independent Work | 1 | | By Appt. | UL | 313 | Staff |
| 110 | The Library in the School | 3 | 2 | M-S | UL | 314 | Irvine |
| 112 | The Public Library | 3 | 2 | M-S | UL | 425 | |
| 121 | Introduction to Library Work | 3 | 5 | M-S | UL | 314 | Daily |
| 127 | Reading for Young People | 2 | 4 | MTThF | UL | 425 | Wofford |
| 129b | Cataloging and Classification | 3 | 8 | M-F | UL | 314 | Wofford |
| 133a | Reference and Bibliography | 3 | 3 | M-S | UL | 314 | Daily |
| 139 | Field Work | 2 | | By arrangement | UL | 313 | Martin |
| 145 | Organization of Library Materials | 2 | 4 | TWFS | UL | 314 | Martin |
| 152a | Book Selection | 3 | 7 | M-F | UL | 314 | Martin |
| 154 | Seminar in Problems of Librarianship | 3 | 7, 8 | MWF | UL | 425 | Daily |

MATHEMATICS AND ASTRONOMY

H. H. Downing, Head of Department, McVey Hall, 121.

UPPER DIVISION REQUIREMENTS—Junior and Senior Years.

Requirements in the Field of Concentration: Forty credits of advanced work in the field of Physical Science during the junior and senior years, including the major work.

Requirements for a Major. Prerequisites: Math. and Ast. 2, 5 or 17, 18, 19, 20a, 20b. **Required:** A minimum of 18 credits of advanced work in mathematics, including Math. and Ast. 25, 26, 27, and one course in Applications.

Requirements for Graduate Work: Graduate students must have had at least 12 credits of mathematics beyond integral calculus before counting work toward an advanced degree.

LOWER DIVISION REQUIREMENTS—See Page 17.

| Course No. | Subject | Credits | Hour | Days | Building | Room No. |
|-----------------|----------------------------------|---------|------|------|----------|----------|
| Mathematics | | | | | | |
| *2 ₁ | Sol. Geom., Eng. 10, Others 15.. | 3 | 6 | M-S | McVH | 103 |
| *2 ₂ | Sol. Geom., Eng. 10, Others 15.. | 3 | 8 | M-F | McVH | 103 |

* Open to Freshmen.

COLLEGE OF ARTS AND SCIENCES—Continued

| Course No. | Subject | Credits | Hour | Days | Building | Room No. | Instructor |
|-------------------|--|---------|------|----------|----------|----------|----------------|
| | MATH. & ASTR.—Continued Mathematics—Cont. | | | | | | |
| *5 ₁ | Coll. Alg., Com. 15, Others 10.... | 5 | { 1 | M-S | McVH | 328 | Snider |
| | | | { 2 | MTThF | McVH | 328 | |
| *5 ₂ | Coll. Alg., Com. 15, Others 10.... | 5 | { 3 | M-S | McVH | 104 | Church |
| | | | { 4 | MTThF | | | |
| *5 ₃ | Coll. Alg., Com. 15, Others 10.... | 5 | { 6 | M-S | McVH | 104 | Dyer-Jasper |
| | | | { 7 | MTThF | | | |
| *5 ₄ | Coll. Alg., Open 25 | 5 | { 2 | M-S | McVH | 103 | Cooper |
| | | | { 3 | MTThF | | | |
| *15 | Math. of Fin., Com. 20, Others 5 | 3 | 2 | M-S | McVH | 129 | Fields |
| *17 ₁ | Coll. Alg., Com. 25 | 3 | 2 | M-S | McVH | 100 | Foster |
| *17 ₂ | Coll. Alg., Com. 20, Others 5..... | 3 | 2 | M-S | | | Daly |
| *17 ₃ | Coll. Alg., Com. 25 | 3 | 3 | M-S | McVH | 106 | Riggs |
| *17 ₄ | Coll. Alg., Eng. 10, Others 15.... | 3 | 3 | M-S | McVH | 129 | Fields |
| *17 ₅ | Coll. Alg., Com. 20, Others 5..... | 3 | 4 | M-S | McVH | 328 | Cooper-Snider |
| *17 ₆ | Coll. Alg., Eng. 10, Others 15.... | 3 | 4 | M-S | McVH | 106 | Tiller |
| *18 ₁ | Pl. Trig., Eng. 15, Others 10..... | 3 | 1 | M-S | McVH | 109 | Daly |
| *18 ₂ | Pl. Trig., Eng. 20, Others 5..... | 3 | 2 | M-S | McVH | 106 | Church-Downing |
| *19 ₁ | Pl. Anal. Geom., Eng. 20, Others 5 | 3 | 2 | M-S | | | Riggs |
| *19 ₂ | Pl. Anal. Geom., Eng. 20, Others 5 | 3 | 3 | M-S | McVH | 107 | Brown |
| *19 ₃ | Pl. Anal. Geom., Eng. 20, Others 5 | 3 | 4 | M-S | McVH | 103 | Foster |
| 20a ₁ | Diff. Calc., Eng. 20, Others 5..... | 4 | { 5 | M-S | | | |
| | | | { 4 | WF | McVH | 109 | Atkins |
| 20a ₂ | Diff. Calc., Eng. 20, Others 5..... | 4 | { 2 | M-S | | | |
| | | | { 1 | TTh | McVH | 107 | Atkins-Rohde |
| 20a ₃ | Diff. Calc., Eng. 20, Others 5..... | 4 | { 4 | M-S | | | |
| | | | { 5 | TTh | McVH | 129 | Rohde |
| 20b ₁ | Int. Calc., Eng. 20, Others 5..... | 4 | { 3 | M-S | | | |
| | | | { 2 | TTh | McVH | 109 | Jasper |
| 20b ₂ | Int. Calc., Eng. 20, Others 5..... | 4 | { 2 | M-S | | | |
| | | | { 1 | TTh | McVH | 104 | Dyer |
| 20b ₃ | Int. Calc. Open 25 | 4 | { 4 | M-S | | | |
| | | | { 5 | TTh | McVH | 100 | South-Pence |
| | Courses open only to Upper Division and Graduate Students: | | | | | | |
| 105a ₁ | Diff. Equas., Eng. 20, Others 5.. | 3 | 5 | M-S | McVH | 107 | Brown |
| 105a ₂ | Diff. Equas. Open 25 | 3 | 6 | M-S | McVH | 106 | Tiller |
| 103 | Theory of Equas. | 3 | 5 | M-S | McVH | 103 | Downing |
| 110a-f | Indep. Work in Math.each | 3 | | By Appt. | | | Staff |
| 122 | Actuarial Mathematics | 3 | 2 | M-S | McVH | 105 | South |
| 123 | Curve Tracing | 3 | 3 | M-S | McVH | 100 | Pence |
| | Courses open only to Graduate Students: | | | | | | |
| 203a-d | Thesis | 3 | | By Appt. | | | Senior staff |

MUSIC

Mildred S. Lewis, Acting Head of Department, Music Annex, 620 S. Lime

UPPER DIVISION REQUIREMENTS—Junior and Senior Years

Requirements in Field of Concentration: Forty credits of advanced work in the field of Literature, Philosophy, and the Arts during the junior and senior years, including the major work.

* Open to Freshmen.

COLLEGE OF ARTS AND SCIENCES—Continued

| Course No. | Subject | Credits | Hour | Days | Building | Room No. | Instructor |
|------------|---------|---------|------|------|----------|----------|------------|
|------------|---------|---------|------|------|----------|----------|------------|

LAW

A student in the College of Arts and Sciences may elect toward the A.B. degree a total of 30 credits from other colleges of the University. However, election of law courses is restricted. For the combined Arts-Law course see the University catalog.

LIBRARY SCIENCE

Robert H. Deily, Head of Department, University Library, 313.

UPPER DIVISION REQUIREMENTS—Junior and Senior Years.

Requirements in the Field of Concentration: Forty credits of advanced work in the field of Literature, Philosophy and the Arts (or acceptable equivalent), including the major, during the junior and senior years.

Requirements for a Major. Junior and senior standing. **Required:** The professional curriculum of 30 credits. With the approval of the Head of the Department a student may substitute one course outside the Library Science Department, e.g., Education 186, Visual Teaching, for one of the electives.

LOWER DIVISION REQUIREMENTS—See Page 17.

| Courses open only to Upper Division and Graduate Students: | | | | | | | |
|--|--|---|------|----------------|----|-----|---------|
| 101a-d | Independent Work | 1 | | By Appt. | UL | 313 | Staff |
| 110 | The Library in the School | 3 | 2 | M-S | UL | 314 | Irvine |
| 112 | The Public Library | 3 | 2 | M-S | UL | 425 | |
| 121 | Introduction to Library Work | 3 | 5 | M-S | UL | 314 | Deily |
| 127 | Reading for Young People | 2 | 4 | MTThF | UL | 425 | Wofford |
| 129b | Cataloging and Classification | 3 | 8 | M-F | UL | 314 | Wofford |
| 133a | Reference and Bibliography | 3 | 3 | M-S | UL | 314 | Deily |
| 139 | Field Work | 2 | | By arrangement | UL | 313 | Martin |
| 145 | Organization of Library Materials | 2 | 4 | TWFS | UL | 314 | Martin |
| 152a | Book Selection | 3 | 7 | M-F | UL | 314 | Martin |
| 154 | Seminar in Problems of Librarianship | 3 | 7, 8 | MWF | UL | 425 | Deily |

MATHEMATICS AND ASTRONOMY

H. H. Downing, Head of Department, McVey Hall, 121.

UPPER DIVISION REQUIREMENTS—Junior and Senior Years.

Requirements in the Field of Concentration: Forty credits of advanced work in the field of Physical Science during the junior and senior years, including the major work.

Requirements for a Major. Prerequisites: Math. and Ast. 2, 5 or 17, 18, 19, 20a, 20b. **Required:** A minimum of 18 credits of advanced work in mathematics, including Math. and Ast. 25, 26, 27, and one course in Applications.

Requirements for Graduate Work: Graduate students must have had at least 12 credits of mathematics beyond integral calculus before counting work toward an advanced degree.

LOWER DIVISION REQUIREMENTS—See Page 17.

| Mathematics | | | | | | | |
|-----------------|----------------------------------|---|---|-----|------|-----|--|
| *2 ₁ | Sol. Geom., Eng. 10, Others 15.. | 3 | 6 | M-S | McVH | 103 | |
| *2 ₂ | Sol. Geom., Eng. 10, Others 15.. | 3 | 8 | M-F | McVH | 103 | |

* Open to Freshmen.

COLLEGE OF ARTS AND SCIENCES—Continued

| Course No. | Subject | Credits | Hour | Days | Building | Room No. | Instructor |
|-------------------|--|---------|------|----------|----------|----------|----------------|
| | MATH. & ASTR.—Continued Mathematics—Cont. | | | | | | |
| *5 ₁ | Coll. Alg., Com. 15, Others 10 | 5 | 1 | M-S | McVH | 328 | Snider |
| | | | 2 | MTThF | McVH | 328 | |
| *5 ₂ | Coll. Alg., Com. 15, Others 10 | 5 | 3 | M-S | McVH | 104 | Church |
| | | | 4 | MTThF | | | |
| *5 ₃ | Coll. Alg., Com. 15, Others 10 | 5 | 6 | M-S | McVH | 104 | Dyer-Jasper |
| | | | 7 | MTThF | | | |
| *5 ₄ | Coll. Alg., Open 25 | 5 | 2 | M-S | McVH | 103 | Cooper |
| | | | 3 | MTThF | | | |
| *15 | Math. of Fin., Com. 20, Others 5 | 3 | 2 | M-S | McVH | 129 | Fields |
| *17 ₁ | Coll. Alg., Com. 25 | 3 | 2 | M-S | McVH | 100 | Foster |
| *17 ₂ | Coll. Alg., Com. 20, Others 5 | 3 | 2 | M-S | | | Daly |
| *17 ₃ | Coll. Alg., Com. 25 | 3 | 3 | M-S | McVH | 106 | Riggs |
| *17 ₄ | Coll. Alg., Eng. 10, Others 15 | 3 | 3 | M-S | McVH | 129 | Fields |
| *17 ₅ | Coll. Alg., Com. 20, Others 5 | 3 | 4 | M-S | McVH | 328 | Cooper-Snider |
| *17 ₆ | Coll. Alg., Eng. 10, Others 15 | 3 | 4 | M-S | McVH | 106 | Tiller |
| *18 ₁ | Pl. Trig., Eng. 15, Others 10 | 3 | 1 | M-S | McVH | 109 | Daly |
| *18 ₂ | Pl. Trig., Eng. 20, Others 5 | 3 | 2 | M-S | McVH | 106 | Church-Downing |
| *19 ₁ | Pl. Anal. Geom., Eng. 20, Others 5 | 3 | 2 | M-S | | | Riggs |
| *19 ₂ | Pl. Anal. Geom., Eng. 20, Others 5 | 3 | 3 | M-S | McVH | 107 | Brown |
| *19 ₃ | Pl. Anal. Geom., Eng. 20, Others 5 | 3 | 4 | M-S | McVH | 103 | Foster |
| 20a ₁ | Diff. Calc., Eng. 20, Others 5 | 4 | 5 | M-S | | | |
| | | | 4 | WF | McVH | 109 | Atkins |
| 20a ₂ | Diff. Calc., Eng. 20, Others 5 | 4 | 2 | M-S | | | |
| | | | 1 | TTh | McVH | 107 | Atkins-Rohde |
| 20a ₃ | Diff. Calc., Eng. 20, Others 5 | 4 | 4 | M-S | | | |
| | | | 5 | TTh | McVH | 129 | Rohde |
| 20b ₁ | Int. Calc., Eng. 20, Others 5 | 4 | 3 | M-S | | | |
| | | | 2 | TTh | McVH | 109 | Jasper |
| 20b ₂ | Int. Calc., Eng. 20, Others 5 | 4 | 2 | M-S | | | |
| | | | 1 | TTh | McVH | 104 | Dyer |
| 20b ₃ | Int. Calc. Open 25 | 4 | 4 | M-S | | | |
| | | | 5 | TTh | McVH | 100 | South-Pence |
| | Courses open only to Upper Division and Graduate Students: | | | | | | |
| 105a ₁ | Diff. Equas., Eng. 20, Others 5 | 3 | 5 | M-S | McVH | 107 | Brown |
| 105a ₂ | Diff. Equas. Open 25 | 3 | 6 | M-S | McVH | 106 | Tiller |
| 103 | Theory of Equas. | 3 | 5 | M-S | McVH | 103 | Downing |
| 110a-f | Indep. Work in Math. each | 3 | | By Appt. | | | Staff |
| 122 | Actuarial Mathematics | 3 | 2 | M-S | McVH | 105 | South |
| 123 | Curve Tracing | 3 | 3 | M-S | McVH | 100 | Pence |
| | Courses open only to Graduate Students: | | | | | | |
| 203a-d | Thesis each | 3 | | By Appt. | | | Senior staff |
| | MUSIC | | | | | | |

Mildred S. Lewis, Acting Head of Department, Music Annex, 620 S. Lime

UPPER DIVISION REQUIREMENTS—Junior and Senior Years

Requirements in Field of Concentration: Forty credits of advanced work in the field of Literature, Philosophy, and the Arts during the junior and senior years, including the major work.

* Open to Freshmen.

COLLEGE OF ARTS AND SCIENCES—Continued

| Course No. | Subject | Credits | Hour | Days | Building | Room No. | Instructor |
|-----------------|---------|---------|------|------|----------|----------|------------|
| MUSIC—Continued | | | | | | | |

Requirements for a Major. Prerequisites: Junior standing; Music A; 12a, b; 33a, b; Applied Music 12 semester hours. **Required:** A minimum of 15 credits of advanced work in Applied Music and music courses 19a, b; 34a, b; and 114a or 115 (depending upon instrumental or choral major. Other courses such as Music 4a, b; 7, 8, 9; 13a, b; or 26 may be elected. Music 42 and a comprehensive examination are required of all music majors in the senior year. All music majors are required to take part in either the Orchestra or Glee Club for which participation they receive credit in the junior and senior years.

Fees for Applied Music: All Applied Music (piano, voice, organ, instrumental) requires a fee of \$25 for one half-hour lesson per week. Practice room fee is \$6 per semester, additionally. Organ practice fees are \$12.50 per semester for five hours a week practice; \$25 per semester for 10 hours a week practice. Organ practice may be arranged for on a semester basis only, not by the hour. Rental of instruments for use in Music 7, 8, 9 is \$3.00 per semester per course. Rental of orchestral or band instruments for other instruction is \$6.00 per semester, payable personally by both veterans and non-veterans.

Note.—Enrollment fee for non-University students (in addition to above fees) is \$15.00 per semester.

All fees payable within thirty days after registration. After that time a delinquency fee will be charged.

LOWER DIVISION REQUIREMENTS—See Page 17.

| | | | | | | | |
|-----------------|---|---|-------|------|----|-----|----------|
| *A ₁ | An Introduction to Humanities Through the Study of Music | 2 | 4 | M-Th | MA | 105 | Prindl |
| *A ₂ | An Introduction to Humanities Through the Study of Music | 2 | 5 | M-Th | MA | 105 | Lewis |
| *4a | Public School Music | 2 | 4 | M-Th | MA | 208 | Lewis |
| *22a, b | Band (Freshmen) | 2 | 9, 10 | TTh | MA | 105 | Prindl |
| 23a, b | Band (Sophomores) | 2 | 9, 10 | TTh | MA | 105 | Prindl |
| 33a | Elem. Harmony, Sight-singing, and Dictation | 4 | 2 | M-S | MA | 203 | E. Adams |
| *39a-h | Glee Club (For men & women) | 1 | 3 | TTh | | | |

Note.—Admittance to the Glee Club is through the Director.

| Applied Music | | | | | | | |
|------------------------------------|---|---|----------|-----|-----|-----------|--|
| *15a-h | Applied Music—Piano | 2 | By Appt. | {** | 2 | Morgan | |
| *C15a-h | Applied Music—Piano | 1 | By Appt. | {** | 6 | Cullis | |
| *16a-h | Applied Music—Strings (Violin, Viola, Cello) | 2 | By Appt. | {** | 2 | Morgan | |
| *C16a-h | Applied Music—Strings (Violin, Viola, Cello) | 1 | By Appt. | {** | 6 | Cullis | |
| *16a ₂ -h ₂ | Applied Music—Strings (Bass) | 2 | By Appt. | MA | 205 | E. Adams | |
| *C16a ₂ -h ₂ | Applied Music—Strings (Bass) | 1 | By Appt. | MA | 205 | E. Adams | |
| *17a-h | Applied Music—Voice | 2 | By Appt. | {† | 1 | Pinnell | |
| *C17a-h | Applied Music—Voice | 1 | By Appt. | {† | 3 | Kiviniemi | |
| *18a-h | Applied Music—Organ | 2 | By Appt. | {† | 1 | Pinnell | |
| *C18a-h | Applied Music—Organ | 1 | By Appt. | {† | 3 | Kiviniemi | |
| *31a-h | Applied Music—Woodwind Instruments | 2 | By Appt. | MeH | Aud | Cullis | |
| | | | | MeH | Aud | Cullis | |
| | | | By Appt. | MA | 206 | Prindl | |

* Open to Freshmen.

** 628 South Lime.

† 624 South Lime.

COLLEGE OF ARTS AND SCIENCES—Continued

| Course No. | Subject | Credits | Hour | Days | Building | Room No. | Instructor |
|--|--|---------|-------|----------|----------|----------|------------|
| MUSIC—Continued | | | | | | | |
| Applied Music—Cont. | | | | | | | |
| *C31a-h | Applied Music—Woodwind Instruments | 1 | | By Appt. | MA | 206 | Prindl |
| *32a-h | Applied Music—Brass and Percussion Instruments | 2 | | By Appt. | MA | 206 | Prindl |
| *C32a-h | Applied Music—Brass and Percussion Instruments | 1 | | By Appt. | MA | 206 | Prindl |
| Courses open only to Upper Division and Graduate Students: | | | | | | | |
| 7 | Strings—Methods, Materials and Techniques | 2 | 4 | M-Th | MA | 207 | E. Adams |
| 26 | High School Methods | 2 | 2 | M-Th | MA | 208 | Lewis |
| 28a, b | Concert Band (Juniors) | 2 | 9, 10 | TTh | MA | 105 | Prindl |
| 29a, b | Concert Band (Seniors) | 2 | 9, 10 | TTh | MA | 105 | Prindl |
| 34a | Adv. Harmony, Sightsinging and Dictation | 4 | 5 | M-S | MA | 203 | E. Adams |
| 115 | Choral Methods and Conducting | 2 | 4 | FS | MA | 203 | E. Adams |
| Courses open only to Graduate Students: | | | | | | | |
| 215a, b | Applied Music—Pianoeach | 2 | | By Appt. | ** | 2 | Morgan |
| C215a, b | Applied Music—Piano.....each | 1 | | By Appt. | ** | 2 | Morgan |
| 217a, b | Applied Music—Voiceeach | 2 | | By Appt. | † | 1 | Pinnell |
| C217a, b | Applied Music—Voiceeach | 1 | | By Appt. | † | 3 | Kiviniemi |
| | | | | | | 1 | Pinnell |
| | | | | | | 3 | Kiviniemi |
| PHILOSOPHY | | | | | | | |

John Kuiper, Head of Department, Frazee Hall, 103.

UPPER DIVISION REQUIREMENTS—Junior and Senior Years

Requirements in the Field of Concentration: Forty credits in courses not open to freshmen, which may be elected in either (1) the field of Literature, Philosophy, and the Arts, or (2) in the field of Social Studies.

Requirements for a Major. Prerequisites: Six credits in Philosophy. **Required:** A minimum of fifteen credits in Philosophy; Philosophy 35a-c; and a comprehensive examination in the senior year.

LOWER DIVISION REQUIREMENTS—See Page 17.

| | | | | | | | |
|--|---|---|---|----------|----|-----|--------|
| *A ₁ | An Introduction to the Humanities Through the Study of Philosophy | 2 | 1 | M-Th | FH | 205 | Kuiper |
| *A ₂ | An Introduction to the Humanities Through the Study of Philosophy | 2 | 5 | M-Th | FH | 205 | Melzer |
| 21 | Introduction to Philosophy | 3 | 2 | M-S | FH | 205 | Kuiper |
| 31 | Elementary Logic | 3 | 3 | M-S | FH | 105 | Melzer |
| 51 | Ethics | 3 | 4 | M-S | FH | 205 | DeBoer |
| 35a, b, c | Tutorial Work in Philosophyeach | 1 | | By Appt. | FH | 103 | Melzer |
| Courses open only to Upper Division and Graduate Students: | | | | | | | |
| 120 | Great Religions of the World | 3 | 3 | M-S | FH | 205 | DeBoer |
| 109a-d | Independent Workeach | 3 | | By Appt. | FH | 103 | Melzer |

* Open to Freshmen.

** 628 South Lime.

† 624 South Lime.

COLLEGE OF ARTS AND SCIENCES—Continued

| Course No. | Subject | Credits | Hour | Days | Building | Room No. | Instructor |
|------------|---------|---------|------|------|----------|----------|------------|
|------------|---------|---------|------|------|----------|----------|------------|

PHYSICAL EDUCATION

Don Cash Seaton, Head of Department, Alumni Gymnasium

Service (REQUIRED) COURSES

LOWER DIVISION REQUIREMENTS—See Page 17.

Undergraduate students who have not completed the physical education requirements must enroll in one of the following courses:

1. Orientation in Physical Education (P. E. 1)—for new students.
2. Adapted Physical Education (P. E. 2)—for students assigned to corrective work by the Health Department and students who failed the physical fitness test in P. E. 1.
3. Sports Classes for students who passed the physical fitness test in P. E. 1 or P. E. 2. Students must enroll in a sports class listed for men, women, or one for men and women.

| | | | | | | | |
|-----------------|--------------------------------|---|-------|-----|----|--|-------------|
| *1 ₁ | Orientation (Men) (40) | 0 | 7, 8 | MWF | MG | | Johnson |
| *1 ₂ | Orientation (Women) (40) | 0 | 7, 8 | MWF | WG | | Murray |
| *2 ₁ | Adapted P. E. (Men) (40) | 0 | 7, 8 | MWF | MG | | Hackensmith |
| *2 ₂ | Adapted P. E. (Women) (40).... | 0 | 9, 10 | MWF | WG | | Murray |

The following courses (4-25) are open to all graduate students for recreation.

| | | | | | | | |
|-----|--|---|----------|------|----|--|------------------------|
| *4 | Archery (Men & Women) (30).. | 0 | 7, 8 | MWF | MG | | Karsner |
| *8 | Bowling (Men & Women) (50) | 0 | 7, 8 | M-Th | MG | | McCubbin and Murray |
| *10 | Folk Dancing (Men & Women) (60) | 0 | 8, 9, 10 | MW | WG | | Karsner |
| *11 | Golf (Men & Women) (20) | 0 | 1, 2, 3 | TTh | MG | | Staff |
| *24 | Tennis (Men & Women) (32).... | 0 | 1, 2 | MWF | MG | | Lancaster and Shaw |

The following two activities are open to all students and faculty for recreation:

| | | | | | | | |
|-----|---------------------|---|------------|-----|----|--|---------------|
| *28 | Social Dacing | 0 | 4:30-6:00 | TTh | WG | | Shaw, Karsner |
| | Volleyball | 0 | 12:00-1:30 | M-S | MG | | Staff |

Veterans and students who have completed their Physical Education requirement may enroll in the following advanced sports course for one (1) credit.

| | | | | | | | |
|----|-----------------------------|---|---------|-----|----|--|-----------|
| 12 | Advanced Golf (Men & Women) | 1 | 1, 2, 3 | MW | MG | | Staff |
| 25 | Adv. Tennis (Men & Women).. | 1 | 3, 4 | MWF | MG | | Lancaster |

PROFESSIONAL COURSES

UPPER DIVISION REQUIREMENTS—Junior and Senior Years

Requirements in Field of Concentration: Forty credits of advanced work in the field of Biological Sciences, including the major work.

Requirements for a Major. Prerequisites: For men and women—Sociology 1; Anatomy and Physiology 4 and 5; Zoology 25; Physical Education 40, 51, 80. For men—Physical Education 41, 42, 43, 45, 52, 56, 70. For women—Hygiene 7; Physical Education 46, 47, 49, 53, 57, 90.

Required: For men and women—Home Economics 101; Physical Education 62a, 62b, 140, 143, 165, 170, 172, 180. For women—Physical Education 190.

| | | | | | | | |
|-----|--|---|---|------|----|--|-----------|
| *58 | Sports Officiating for Men | 1 | 5 | M-Th | | | Lancaster |
| *60 | Physical Education in the Elementary School | 3 | 4 | M-S | MG | | Murray |

* Open to Freshmen.

COLLEGE OF ARTS AND SCIENCES—Continued

| Course No. | Subject | Credits | Hour | Days | Building | Room No. | Instructor |
|--|--|---------|------------------------------|------|----------|----------|-------------|
| PROFESSIONAL COURSES—Continued | | | | | | | |
| Courses open only to Upper Division and Graduate Students: | | | | | | | |
| C141 | Coaching Advanced Basketball (For one week only) | 2 | { 8:00-12 } { 1:00-5:00 } | M-S | MG | | Staff |
| C142 | Coaching Advanced Football (For one week only) | 2 | { 8:00-12 } { 1:00-5:00 } | M-S | MG | | Staff |
| 144 | Physical Education in the Secondary School | 3 | 3 | M-S | | | Johnson |
| 165 | Safety in Physical Education.... | 2 | 5 | M-Th | | | Seaton |
| 180 | Administration and Organization of Recreation | 3 | 4 | M-S | | | Staff |
| Courses open only to Graduate Students: | | | | | | | |
| 240 | Graduate Seminar in P. E. | 2 | 2 | M-Th | | | Hackensmith |
| 243 | Problems in the Administration of Athletics | 2 | 3 | M-Th | | | McCubbin |
| 244 | Tests and Measurements in Health and P. E. | 3 | 1 | M-S | | | Hackensmith |
| 290 | Dance and Education | 3 | 5 | M-S | | | Shaw |
| PHYSICS | | | | | | | |

W. S. Webb, Head of Department, Pence Hall, 101.

UPPER DIVISION REQUIREMENTS—Junior and Senior Years

Requirements in the Field of Concentration: Forty credits of advanced work in the field of Physical Sciences, including the major work.

Requirements for a Major. Prerequisites: Physics 3a, 3b, Mathematics 17, 3, and 19.

Required: Mathematics 20a, 20b; Physics 125c, and a minimum of 16 credits of advanced work in Physics; and a comprehensive examination in the senior year.

LOWER DIVISION REQUIREMENTS—See Page 17.

| | | | | | | | |
|--------------------|------------------------------|---|-------------------|-------|-------|-----|---------|
| { 3a ₁ | Gen. Col. Physics, Lec. | 6 | { 3 } { 2 } | MTh | Pence | 201 | Koppius |
| | | | | | | | |
| { 3a ₁ | Gen. Col. Physics, Rec. | 6 | { 3 } { 1, 2 } | TWFS | Pence | 103 | |
| { 3a ₁₁ | Gen. Col. Physics, Lab. | | | | | | |
| { 3a ₂ | Gen. Col. Physics, Lec. | | | | | | |
| { 3a ₂ | Gen. Col. Physics, Rec. | 6 | { 3 } { 4 } | TWFS | Pence | 208 | |
| { 3a ₂₁ | Gen. Col. Physics, Lab. | | | | | | |
| { 3a ₃ | Gen. Col. Physics, Lec. | 6 | { 3 } { 4 } | MTh | Pence | 201 | Koppius |
| | | | | | | | |
| { 3a ₃ | Gen. Col. Physics, Rec. | | | | | | |
| { 3a ₃₁ | Gen. Col. Physics, Lab. | 4 | { 6, 7 } | TWThF | Pence | 105 | |
| { 3c ₁ | Gen. Col. Physics, Rec. | | | | | | |
| { 3c ₁₁ | Gen. Col. Physics, Lab. | 4 | { 1, 2 } | MWF | Pence | 109 | Koppius |
| { 3c ₂ | Gen. Col. Physics, Rec. | | | | | | |
| { 3c ₂₁ | Gen. Col. Physics, Lab. | 4 | { 1, 2 } | TThS | Pence | 109 | Cochran |
| { 3c ₃ | Gen. Col. Physics, Rec. | | | | | | |
| { 3c ₃₁ | Gen. Col. Physics, Lab. | 4 | { 5, 6 } | MWF | Pence | 109 | Cochran |
| { 3c ₄ | Gen. Col. Physics, Rec. | | | | | | |
| { 3c ₄₁ | Gen. Col. Physics, Lab. | 4 | { 4 } | M-S | Pence | 206 | Hanau |
| | | | | | | | |
| | | 4 | { 5, 6 } | TThS | Pence | 109 | |
| | | | | | | | |

COLLEGE OF ARTS AND SCIENCES—Continued

| Course No. | Subject | Credits | Hour | Days | Building | Room No. | Instructor |
|--|--|---------|------|------|----------|----------|------------|
| PHYSICS—Continued | | | | | | | |
| Courses open only to Upper Division and Graduate Students: | | | | | | | |
| 110 | Spectroscopy | 3 | 3 | M-S | Pence | 205 | Hanan |
| 114 | Vac. Tube and Circuit Theory.. | 3 | 4 | M-S | Pence | 103 | Crawley |
| †155a | Fund. Atomic and Nuclear Physics | 3 | 4 | M-S | Pence | 205 | Pardue |
| Courses open only to Graduate Students: | | | | | | | |
| †215a | Quantum Theory | 3 | 4 | M-S | Pence | 205 | Pardue |
| POLITICAL SCIENCE | | | | | | | |

Amry Vandenbosch, Head of Department, Administration Bld., 202.

UPPER DIVISION REQUIREMENTS—Junior and Senior Years

Requirements in the Field of Concentration: Forty credits of advanced work in the field of Social Studies, during the junior and senior years, including the major work.

Requirements for a Major. Prerequisites: Political Science or History 10a and 10b or Political Science 51. **Required:** At least one course in each of four fields of Political Science, including one course in Constitutional Development and one in Political Theory; Political Science 190; minimum of 15 credits of advanced work in Political Science; and a comprehensive examination in the senior year.

LOWER DIVISION REQUIREMENTS—See Page 17.

Note.—See History for duplications in Political Science and History.

| | | | | | | | |
|--|--|---|------|------|---|-----|-------------|
| *8a | European Civilization to 1815.... | 3 | 4 | M-S | A | 304 | Stout |
| *8b | European Civilization since 1815 | 3 | 6 | M-F | A | 302 | Stout |
| *10a | American Civilization 1607-1865 | 3 | 3 | M-S | A | 304 | Bach |
| *10b | Amer. Civilization since 1865.... | 3 | 7 | M-F | A | 203 | Povlovich |
| *51 ₁ | American Government | 3 | 1 | M-S | A | 302 | Bach |
| *51 ₂ | American Government | 3 | 2 | M-S | A | 302 | Povlovich |
| *51 ₃ | American Government | 3 | 3 | M-S | A | 203 | Edelmann |
| Not open to Freshmen: | | | | | | | |
| 80 | State Government | 3 | 2 | M-S | A | 304 | Reeves |
| Courses open only to Upper Division and Graduate Students: | | | | | | | |
| 150 | International Law | 3 | 2 | M-S | A | 203 | Vandenbosch |
| 159b | American Constitutional Development | 3 | 3 | M-S | A | 302 | Trimble |
| 165 | World Politics | 3 | 5 | M-S | A | 203 | Edelmann |
| 175 | Contemporary Amer. Political Thought | 3 | 4 | M-S | A | 302 | Shannon |
| Courses open only to Graduate Students: | | | | | | | |
| 202 | National and Regional Planning | 3 | 7, 8 | MWF | A | 202 | Shannon |
| 211 | The Constitution and Civil Rights | 3 | 7, 8 | TThF | A | 302 | Trimble |

* Open to Freshmen.

† Either 155 or 215a will be given.

COLLEGE OF ARTS AND SCIENCES—Continued

| Course No. | Subject | Credits | Hour | Days | Building | Room No. | Instructor |
|---|--|---------|-------|----------|----------|----------|-------------|
| PSYCHOLOGY | | | | | | | |
| Frank A. Pattie, Head of Department, Neville Hall, 106. | | | | | | | |
| UPPER DIVISION REQUIREMENTS—Junior and Senior Years | | | | | | | |
| <p>Requirements for a Major. Prerequisites: Psychology 1a and 1b and 8, or their equivalent. Required: The student may choose as his field of concentration either the Biological or the Social Science group of subjects. In either case 15 of the 40 credits in the field must be earned in courses in Psychology not open to freshmen. In addition students majoring in the Department must pass a comprehensive examination in the senior year.</p> | | | | | | | |
| LOWER DIVISION REQUIREMENTS—See Page 17. | | | | | | | |
| Note.—The student should assign one lecture section and one laboratory section for Psychology 1a. | | | | | | | |
| *1a ₁ | Introduction to Psychology, Lec.-Rec. | 3 | 1 | MTWTh | | | Pattie |
| *1a ₂ | Introduction to Psychology, Lec.-Rec. | 3 | 2 | MTWTh | | | Calvin |
| *1a ₃ | Introduction to Psychology, Lec.-Rec. | 3 | 4 | WThFS | | | Pattie |
| *1a ₄ | Introduction to Psychology, Lec.-Rec. | 3 | 8 | MTWTh | | | Calvin |
| *1a ₅ | Introduction to Psychology, Lab. | | 1, 2 | MW | NH | 205 | |
| *1a ₆ | Introduction to Psychology, Lab. | | 3, 4 | MW | NH | 205 | |
| *1a ₇ | Introduction to Psychology, Lab. | | 3, 4 | MW | NH | 206 | |
| *1a ₈ | Introduction to Psychology, Lab. | | 1, 2 | TTh | NH | 205 | |
| *1a ₉ | Introduction to Psychology, Lab. | | 3, 4 | TTh | NH | 206 | |
| *1a ₁₀ | Introduction to Psychology, Lab. | | 3, 4 | TTh | NH | 206 | |
| *1a ₁₁ | Introduction to Psychology, Lab. | | 9, 10 | MW | NH | 205 | |
| *1a ₁₂ | Introduction to Psychology, Lab. | | 7, 8 | TTh | NH | 206 | |
| *1a ₁₃ | Introduction to Psychology, Lab. | | 3, 4 | FS | NH | 205 | |
| 7 | Psychology of the Child (Prereq. Psych. 1a or equiv.) | 3 | 3 | M-S | NH | 112 | |
| 8 | Individual Differences (Prereq. Psych. 1a, 1b or equiv.) | 3 | 8 | M-F | NH | 112 | Newbury |
| Courses open only to Upper Division and Graduate Students: | | | | | | | |
| 101 | Practice in Testing: Intelli- gence Tests (Prereq. Psy. 8 or equiv.) | 3 | 9, 10 | M-F | NH | 112 | |
| 106 | Industrial Psy. | 3 | 4 | M-S | NH | 112 | Mellenbruch |
| 115 | Genetic Psychology (Prereq. Psy. 1a, 1b) | 3 | 7 | M-F | NH | 112 | Newbury |
| 120a-d | Independent Work in Psychologyeach | 2 | | By Appt. | | | Staff |
| (Prereq.: Major in the Department with a standing of two in Psychology courses.) | | | | | | | |

* Open to Freshmen.

COLLEGE OF ARTS AND SCIENCES—Continued

| Course No. | Subject | Credits | Hour | Days | Building | Room No. | Instructor |
|---|-----------------------------------|---------|--------|----------|----------|----------|-------------|
| PSYCHOLOGY—Continued | | | | | | | |
| Courses open only to Graduate Students: | | | | | | | |
| 210a-h | Research in Psychology.....each | 3 | | By Appt. | NH | 106 | Staff |
| 203a-h | Problems in Psychologyeach | 2 | | By Appt. | NH | 106 | Staff |
| 215 | Psychometricseach | 3 | 5 | M-S | NH | 112 | Mellenbruch |
| (Prereq.: Math. 4 or equiv.) | | | | | | | |
| 219 | Clinical Psychologyeach | 4 | { 1, 2 | MWF } | NH | 112 | Humphreys |
| 230 | Personality Theoryeach | 3 | 1 | TTh } | | | |
| 238 | The Rorschach Testeach | 4 | 3 | M-S | NH | 202 | Humphreys |
| 431a-p | Special Field Practicumeach | 2 | 1, 2 | M-Th | | | |
| (Prereq. Psy. 219) | | | | | | | |
| RADIO ARTS | | | | | | | |

Elmer G. Sulzer, Head of Department, McVey Radio Studios

UPPER DIVISION REQUIREMENTS—Junior and Senior Years

Requirements in Field of Concentration: Forty credits in courses not open to freshmen, including the major work, in the field of Literature, Philosophy, and the Arts, during the junior and senior years.

Requirements for a Major. Prerequisites: Radio Arts 1a, b. **Required:** Radio Arts 2a, 2b, 101, 102, 105, 106a, 106b, and 110; comprehensive examination.

LOWER DIVISION REQUIREMENTS—See Page 17.

| | | | | | | | |
|-----|------------------------------------|---|---|-----|------|-----|----------|
| *1a | Radio Today | 3 | 4 | M-S | McVH | Rad | Sulzer |
| 2a | Radio Announcing, Rec. & Lab. | 2 | 7 | M-F | McVH | Rad | Robinson |

ROMANCE LANGUAGES

Hobart Ryland, Head of Department, Miller Hall, 301.

UPPER DIVISION REQUIREMENTS—Junior and Senior Years

Requirements in the Field of Concentration: Forty credits of advanced work in the field of Literature, Philosophy, and the Arts during the junior and senior years, including the major work.

Requirements for a Major. Prerequisites: Junior standing; in French: R. L. 1a-b, 2a-b, 4a-b or 5a-b, 3a-b or 8a-b; in Spanish: R. L. 1a-b or 4a-b, 5a-b, 7a-b, 10a-b-c. **Required:** A minimum of 17 credits of advanced work in Romance Languages: R. L. 80a, b. Comprehensive examination in senior year.

LOWER DIVISION REQUIREMENTS—See Page 17.

Note.—No credit for first semester of a beginning language until second semester is completed. The student who presents one unit of high school foreign language will be permitted to enroll in first year work for full credit. The student who presents two units of high school foreign language will be permitted to enroll in first year work, but will receive credit only if he makes at least a B standing in this course.

| | | | | | | | |
|------------------|--|---|---|------|----|-----|--|
| *A | An Introduction to the Humanities Through the Study of Romance Literatures | 2 | 4 | M-Th | MH | 307 | |
| *1a ₁ | Elementary French | 3 | 3 | M-S | MH | 307 | |
| *1a ₂ | Elementary French | 3 | 5 | M-S | MH | 307 | |
| *1b ₁ | Elementary French | 3 | 2 | M-S | MH | 309 | |
| *1b ₂ | Elementary French | 3 | 4 | M-S | MH | 309 | |

* Open to Freshmen.

COLLEGE OF ARTS AND SCIENCES—Continued

| Course No. | Subject | Credits | Hour | Days | Building | Room No. | Instructor |
|--|-------------------------------|---------|------|----------|----------|----------|------------|
| ROMANCE LANGS.—Cont. | | | | | | | |
| *5a ₁ | Elementary Spanish | 3 | 2 | M-S | MH | 307 | |
| *5a ₂ | Elementary Spanish | 3 | 4 | M-S | MH | 308 | |
| *5b ₁ | Elementary Spanish | 3 | 1 | M-S | MH | 309 | |
| *5b ₂ | Elementary Spanish | 3 | 3 | M-S | MH | 309 | |
| *4b | Elementary Italian | 3 | 1 | M-S | MH | 307 | Schick |
| 2a | Intermediate French | 3 | 2 | M-S | MH | 306b | |
| 2b | Intermediate French | 3 | 3 | M-S | MH | 306b | Eilertsen |
| 3a, b | French Conversation & Comp. | 2 | 7, 8 | TTh | MH | 306b | Ryland |
| 6a, b, c | French Novel and Drama | 3 | 4 | M-S | MH | 306b | Eilertsen |
| 80a, b | Tutorial Seminar | 1 | | By Appt. | | | |
| Courses open only to Upper Division and Graduate Students: | | | | | | | |
| 113a, b | Advanced French Grammar | 3 | 5 | M-S | MH | 306b | Ryland |
| 122a, b | Advanced French Conversation | 2 | 7, 8 | TTh | MH | 306b | Ryland |
| 114a-h | Independent Work in R. L..... | 3 | | By Appt. | | | Staff |
| Courses open only to Graduate Students: | | | | | | | |
| 204b | Romance Philology | 3 | | By Appt. | | | |

The following courses will be given at a special University Summer School in Puebla, Mexico.

| | | | | | | | |
|-------------|--|--------|---|----------|--------|--------|--|
| 7a, b | Intermediate Spanish | each 3 | 2 | M-S | Puebla | Server | |
| 9a, b, c | Spanish Novel and Drama | each 3 | 3 | M-S | Puebla | Server | |
| 10a, b, c | Spanish Conversation and and Comp. | each 3 | 4 | M-S | Puebla | Server | |
| 108a | Spanish American Literature.... | 3 | 5 | M-S | Puebla | Server | |
| 114a-h | Independent Work in R. L. | each 3 | | By Appt. | Puebla | Server | |
| SOCIAL WORK | | | | | | | |

H. E. Wetzel, Head of the Department, McVey Hall, 314.

UPPER DIVISION REQUIREMENTS—Junior and Senior Years

Requirements in the Field of Concentration: Forty credits of advanced work in the field of Social Studies during the junior and senior years, including the major work in the department.

Requirements for a Major. Prerequisite: Social Work 24. A basic minimum of twenty credits in Social Work, including 100, 113, 122, 130a and 140a, plus additional courses depending on the student's area of specialization, including specific courses in Sociology, Psychology, Hygiene, and Rural Sociology. Tutorial and comprehensive examination in the senior year.

LOWER DIVISION REQUIREMENTS—See Page 17.

| | | | | | | | |
|--|---------------------------------|---|------------------|-----|------|-----|--------|
| Courses open only to Upper Division and Graduate Students: | | | | | | | |
| 105 | Child Welfare Services | 3 | 3 | M-S | McVH | 329 | Wetzel |
| 122 | Fields of Social Work | 3 | 4 | M-S | McVH | 329 | Rucker |
| 140a | Principles of Social Group Work | 3 | 5 | M-S | McVH | 329 | Rucker |
| Course for Senior Majors only: | | | | | | | |
| C127b | Tutorial Work in Social Work.. | 2 | (To be arranger) | | McVH | 329 | Staff |
| 113 | Introd. to Social Case Work | 2 | 1 | D | McVH | 329 | Taylor |

* Open to Freshmen.

COLLEGE OF ARTS AND SCIENCES—Continued

| Course No. | Subject | Credits | Hour | Days | Building | Room No. | Instructor |
|------------|---------|---------|------|------|----------|----------|------------|
|------------|---------|---------|------|------|----------|----------|------------|

SOCIOLOGY

Irwin T. Sanders, Head of Department, Frazee Hall, 102.

UPPER DIVISION REQUIREMENTS—Junior and Senior Years

Requirements in the Field of Concentration: Forty credits of advanced work in the field of Social Studies during the junior and senior years, including the major work.

Requirements for a Major. Prerequisites: Sociology 3a and 3b, or equivalent. **Required:** Minimum of 18 credits of advanced work in Sociology, including at least 3 credits in Theory and Methodology, 6 credits in one of the other subdivisions below, and Sociology 19a and b, and 20a and b. Comprehensive examination in senior year.

LOWER DIVISION REQUIREMENTS—See Page 17.

| | | | | | | | |
|--|---|--------|---|-----|--|--|----------|
| *1 | Principles of Sociology | 3 | 1 | M-S | | | Best |
| *2 | Modern Social Problems | 3 | 2 | M-S | | | Holmes |
| *3a† | Societies Around the World..... | 3 | 1 | M-S | | | Sanders |
| *3b ₁ ‡ | Societies Around the World..... | 3 | 2 | M-S | | | Hatch |
| *3b ₂ ‡ | Societies Around the World..... | 3 | 3 | M-S | | | Anderson |
| Courses open only to Upper Division and Graduate Students: | | | | | | | |
| 19a, b | Junior Tutorial | each 1 | 8 | MT | | | Sanders |
| 20a, b | Senior Tutorial | each 1 | 5 | WTh | | | Sanders |
| 103 | Criminology | 3 | 4 | M-S | | | Best |
| 109 | The Family | 3 | 5 | M-S | | | Hatch |
| 114a, b | Independent Work | each 1 | 8 | WTh | | | Sanders |
| 127 | Social Classes | 3 | 4 | M-S | | | Anderson |
| Courses open only to Graduate Students: | | | | | | | |
| 230 | Educational Sociology (Same as Education 230) | 3 | 1 | M-S | | | Hartford |
| (Also see courses in Rural Sociology, page 17.) | | | | | | | |

ZOOLOGY

W. D. Funkhouser, Head of Department, Biological Sciences Bld., 14.

UPPER DIVISION REQUIREMENTS—Junior and Senior Years

Requirements in the Field of Concentration: Forty credits of advanced work in the field of Biological Sciences, during the junior and senior years, including the major.

Requirements for a Major. Prerequisites: Junior standing; Zoology 1a, 1b. **Required:** Zoology 7a, b, or 157a, b; Zoology 106; Zoology 108a, b; Zoology 114a, b; a minimum of 15 credits above 1a, b, passing a comprehensive examination before graduation.

LOWER DIVISION REQUIREMENTS—See Page 17.

| | | | | | | | |
|------------------|--------------------------------|---|---------|------|----|-----|-------------------|
| *1a ₁ | General Zoology, Lec. | 4 | 6, 7 | MW | BS | 200 | Allen |
| *1a ₂ | General Zoology, Lab. | | | TTh | | | |
| *25 ₁ | General Animal Biology, Lec... | 4 | 6, 7, 8 | F | BS | 12 | Allen and others |
| *25 ₂ | General Animal Biology, Lab... | | | M-Th | | | |
| 30 ₁ | Limnology, Lec. | 4 | 2, 3 | M-Th | BS | 11 | Muller and others |
| 30 ₂ | Limnology, Lab. | | | M-Th | | | |
| | | | 7-10 | TTh | BS | B9 | Neel |

* Open to Freshmen.

† Sociology 3a, b same as Geography 3a, b.

‡ Prerequisite to 3b is 3a.

COLLEGE OF ARTS AND SCIENCES—Continued

| Course No. | Subject | Credits | Hour | Days | Building | Room No. | Instructor |
|--|--|---------|------|----------|----------|----------|------------|
| ZOOLOGY—Continued | | | | | | | |
| Courses open only to Upper Division and Graduate Students: | | | | | | | |
| 101a ₁ | Histology, Lec. | 3 | 2, 3 | M | BS | 125 | Brauer |
| 101a ₂ | Histology, Lab. | | 2, 3 | TWThF | BS | 127 | Brauer |
| 105 ₁ | Parasitology, Lec. | 3 | 2 | MW | BS | B3 | Edney |
| 105 ₂ | Parasitology, Lab. | | 7-10 | MW | BS | B9 | Edney |
| 108b | Principles of Zoology (Heredity) | 2 | 5 | MTWF | BS | 200 | Funkhouser |
| 110a-f | Independent Workeach | 3 | | By Appt. | | | Staff |
| 130 ₁ | Advanced Limnology | 4 | | By Appt. | | | Neel |
| 130 ₂ | Advanced Limnology | | | By Appt. | | | Neel |
| 166 | Physiology of Development | 2 | 4 | M-Th | BS | 125 | Brauer |
| Courses open only to Graduate Students: | | | | | | | |
| 210a-c | Problems in Zoologyeach | 3 | | By Appt. | | | Staff |

COLLEGE OF AGRICULTURE AND HOME ECONOMICS

| Course No. | Subject | Credits | Hour | Days | Building | Room No. | Instructor |
|--|--|---------|---------|----------|----------|----------|------------|
| AGRICULTURAL ENTOMOLOGY | | | | | | | |
| 2 ₁ | Apiculture, Lec. | 3 | 8 | MWF | Agr | 103 | Townsend |
| 2 ₂ | Apiculture, Lab. | | 8, 9 | TTh | Agr | 103 | Townsend |
| Courses open only to Upper Division and Graduate Students: | | | | | | | |
| 104 | Economic Entomology: Farm Crop, Insects and Animal Parasites | 3 | 3 | M-S | Agr | 1 | Townsend |
| AGRONOMY | | | | | | | |
| 1 ₁ | Elementary Farm Crops, Lec... | 3 | 5 | MTThS | Agr | 304 | Phillippe |
| 1 ₂ | Elementary Farm Crops, Lab... | | 5, 6 | WF | Agr | 304 | Phillippe |
| Courses open only to Upper Division and Graduate Students: | | | | | | | |
| 102 | Field Crop Ecology | 3 | 2 | M-S | Agr | 205 | Phillippe |
| 103 | Weeds | 2 | 3 | M-Th | Agr | 205 | Phillippe |
| 105 | Adv. Crops: Tobacco and Cereals | 3 | 4 | M-S | Agr | 205 | Kinney |
| 112a, b | Special Problems in Soils..each | 3 | | By Appt. | | | Karraker |
| 114 | Fertilizers and Soil Management (July 8 to 24)..... | 3 | 3, 4, 5 | M-S | Agr | 301 | Karraker |
| Courses open only to Graduate Students: | | | | | | | |
| 204a, b | Special Problems in Production of Forage Crops | 3 | | By Appt. | | | Fergus |
| 205a, b | Special Problems in Production of Tobacco or Cereals | 3 | | By Appt. | | | Kinney |
| 212a-d | Research in Soils | 3 | | By Appt. | | | Karraker |
| ANIMAL INDUSTRY | | | | | | | |
| 1 ₁ | Farm Livestock Production, Lec. | 3 | 8 | MWF | SP | 101 | Johnson |
| 1 ₂ | Farm Livestock Production, Lab. | | 8, 9 | TTh | SP | 107 | Johnson |
| 61 | Genetics | 3 | 4 | M-S | D | 113 | Steele |
| 81 | Principles of Animal Nutrition | 3 | 7 | M-F | D | 113 | Good |
| Courses open only to Upper Division and Graduate Students: | | | | | | | |
| 109a | Special Problems in Animal Husbandry | 3 | | By Appt. | | | Horlacher |
| ANIMAL PATHOLOGY | | | | | | | |
| 51 | Animal Hygiene | 3 | 4 | M-S | AP | 201 | Dimock |
| FARM ECONOMICS | | | | | | | |
| 1 | Agricultural Economics | 3 | 2 | M-S | AP | 201 | Bradford |

COLLEGE OF AGRICULTURE AND HOME ECONOMICS—Continued

| Course No. | Subject | Credits | Hour | Days | Building | Room No. | Instructor |
|--|---|---------|---------|-------|----------|----------|------------|
| Courses open only to Upper Division and Graduate Students: | | | | | | | |
| 110 | Farm Management | 3 | 4 | M-S | AP | 201 | Bradford |
| 112a-c | Special Problems in Farm Managementeach | 3 | 7 | M-F | AP | 201 | McComas |
| Courses open only to Graduate Students: | | | | | | | |
| 201a-c | Research in Farm Economicseach | 3 | By | Appt. | | | McComas |
| FARM ENGINEERING | | | | | | | |
| 4 ₁ | Farm Shop, Lec. | 3 | 1 | MW | AE | 106 | Young |
| 4 ₂ | Farm Shop, Lab. | | 1, 2 | TThFS | AE | 106 | Young |
| Courses open only to Upper Division and Graduate Students: | | | | | | | |
| 101a | Special Problems (July 8 to 24) | 2 | 3, 4, 5 | M-S | AE | 106 | Young |
| 101b | Special Problems (July 8 to 24) | 2 | 7, 8, 9 | M-F | AE | 106 | Young |
| FORESTRY | | | | | | | |
| 1 ₁ | Elements of Forestry, Lec. | 3 | 8 | MWF | Agr | 205 | Davenport |
| 1 ₂ | Elements of Forestry, Lab..... | | 8, 9 | TTh | Agr | 205 | Davenport |
| HOME ECONOMICS | | | | | | | |
| 5 ₁ | Foods, Lec. | 4 | 3 | MTh | HE | 303 | Barkley |
| 5 ₂ | Foods, Lab. | | 3, 4, 5 | TWFS | HE | 200 | Barkley |
| 6 | Foods | 3 | 7, 8, 9 | M-F | HE | 201 | Barkley |
| Courses open only to Upper Division and Graduate Students: | | | | | | | |
| 102 ₁ | Dietetics, Lec. | 3 | 7 | MWF | HE | 204 | Wooldridge |
| 102 ₂ | Dietetics, Lab. | | 7, 8 | TTh | HE | 204 | Wooldridge |
| 105a ₁ | Experimental Cookery, Lec. | 3 | 3 | MW | HE | 203 | Wooldridge |
| 105a ₂ | Experimental Cookery, Lab..... | | 3, 4, 5 | TThF | HE | 205 | Wooldridge |
| 107 | Workshop in Nutrition | 4 | 7, 8 | M-F | HE | 105 | Erikson |
| 114 | Food Preservation | 3 | 2, 3, 4 | M-Th | HE | 204 | Helton |
| 127 ₁ | Adv. Clothing, Lec. | 3 | 4 | MTh | HE | 307 | Sumner |
| 127 ₂ | Adv. Clothing, Lab. | | 4, 5 | TWFS | HE | 307 | Sumner |
| 129 ₁ | Interior Decoration, Lec. | 3 | 2 | MTh | HE | 303 | Seeds |
| 129 ₂ | Interior Decoration, Lab. | | 1, 2 | TWFS | HE | 300 | Seeds |
| 130 | Interior Decoration Projects (June 18 to July 17) | 2 | 5, 6 | M-S | HE | 303 | Seeds |
| 137 | Tailoring | 2 | 7, 8 | M-F | HE | 307 | Sumner |
| (June 18 to July 16) | | | | | | | |
| 140 ₁ | The School Lunch, Lec. | 3 | 5 | MWFS | HE | 105 | Helton |
| 140 ₂ | The School Lunch, Lab. | | 5, 6 | TTh | HE | 105 | Helton |
| 154 | Family Living | 3 | 9 | M-F | HE | 105 | Mumford |
| 155 | The Child and His Clothing..... | 3 | 1 | M-S | HE | 9 | Bentley |
| 156 | Play and Play Materials | 2 | 7, 8 | M-F | NS | | Bentley |
| (July 10 to August 13) | | | | | | | |
| 157 | Infant Development | 2 | 5, 6 | M-S | HE | 9 | Mumford |
| (July 19 to August 14) | | | | | | | |
| 161 | Consumer Problems | 3 | 3 | M-S | HE | 105 | Wilmore |

COLLEGE OF AGRICULTURE AND HOME ECONOMICS—Continued

| Course No. | Subject | Credits | Hour | Days | Building | Room No. | Instructor |
|------------|--|---------|----------------------|--------------|----------|----------|------------|
| | HOME ECONOMICS—Cont. | | | | | | |
| 162b | Home Management and Family Relationships | 3 | | By Appt. | | | Wilmore |
| | HORTICULTURE | | | | | | |
| | Courses open only to Upper Division and Graduate Students: | | | | | | |
| 120 | Landscape Gardening (June 18 to July 7) | 4 | { 3, 4, 5 7, 8, 9 | { M-S M-F | Agr | 202a | Elliott |
| | MARKETS AND RURAL FINANCE | | | | | | |
| | Courses open only to Upper Division and Graduate Students: | | | | | | |
| 100 | Agricultural Marketing | 3 | 3 | M-S | Agr | 4 | Clark |
| 102 | Marketing Tobacco and Other Farm Crops | 2 | 1 | T-F | Agr | 1 | Clark |
| 110 | Agricultural Prices | 3 | 6 | M-S | Agr | 1 | Card |
| 120 | Agricultural Finance | 2 | 5 | M-Th | Agr | 4 | Clark |
| | RURAL SOCIOLOGY | | | | | | |
| 10 | Introduction to Rural Sociology | 3 | 1 | M-S | Agr | 205 | Beers |

COLLEGE OF ENGINEERING

| Course No. | Subject | Credits | Hour | Days | Building | Room No. | Instructor |
|----------------------------------|--|---------|---|------|------------|----------------------|------------|
| ARCHITECTURAL ENGINEERING | | | | | | | |
| 5 | Building Equipment | 2 | 3 | M-Th | Eng. | 206 | Cheek |
| CIVIL ENGINEERING | | | | | | | |
| 15 | General Surveying | 3 | Summer Surveying Camp, Camp Robinson, Noble, Kentucky | | | Shaver and Blythe | |
| 16b | Route Surveying | 3 | | | | | |
| 17 | Hydrographic Surveying | 1 | | | | | |
| 31 | Highway Location, Construc- tion, and Maintenance | 2 | 3 | MWFS | Eng | 214 | Chambers |
| 81 ₁ | Testing Materials (20) | 1 | 1, 2 | TTh | Eng | 108 | Chambers |
| 81 ₂ | Testing Materials (20) | 1 | 7, 8 | MW | Eng | 108 | Chambers |
| 81 ₃ | Testing Materials (20) | 1 | 7, 8 | TTh | Eng | 108 | Chambers |
| 81 ₄ | Testing Materials (20) | 1 | 9, 10 | MW | Eng | 108 | Chambers |
| 110a | Reinforced Concrete | 4 | } Lec. 6 hrs. by appt. } Lab. 6 hrs. by appt. | | Eng | 206 | Mory |
| 120 | Hydraulics | 2 | 5 | MWFS | Eng | 206 | Cheek |
| 123 | Hydraulics Laboratory | 1 | 7, 8, 9 | TTh | Eng | 108 | Cheek |
| 171a | Theory of Structures | 3 | 4 | M-S | Eng | 214 | Leggett |
| 171b | Theory of Structures | 3 | 4 | M-S | Eng | 206 | Mory |
| 173a | Steel Structures | 3 | 7, 8, 9 | M-Th | Eng | 206 | Mory |
| 174 | Graphic Solutions | 2 | 7, 8, 9 | M-Th | Eng | 216 | Leggett |
| ELECTRICAL ENGINEERING | | | | | | | |
| 11 ₁ | Electrical Laboratory | 1 | 1, 2 | FS | Eng | 130 | Adams |
| 11 ₂ | Electrical Laboratory | 1 | 5, 6 | FS | Eng | 130 | Adams |
| 21 | Principles of Elec. Engr., Rec... | 4 | 3 | M-S | Nierenberg | | |
| 21 ₁ | Principles of Elec. Engr., Lab... | | 6, 7 | MW | | | |
| 21 ₂ | Principles of Elec. Engr., Lab... | | 1, 2 | TTh | | | |
| 21 ₃ | Principles of Elec. Engr., Lab... | | 1, 2 | WF | Boyd | | |
| 101 | Fundamentals of Elec. Ma- chinery, Rec. | 3 | 3 | FS | | | |
| 101 ₁ | Fundamentals of Elec. Mach., Lab. | | 4, 5, 6 | FS | | | |
| 191 ₂ | Fundamentals of Elec. Mach., Lab. | | 3, 4, 5 | TTh | Barnett | | |
| 105a | Electrical Engr. Circuits and Machinery, Rec. | 4 | 5 | M-S | | | |
| 105a ₁ | Elec. Engr. Circuits and Mach., Lab. | | 7, 8, 9 | M | | | |
| 105a ₁₁ | Elec. Engr. Circuits and Mach., Lab. | | 7, 8, 9 | T | Bureau | | |
| 105a ₁₂ | Elec. Engr. Circuits and Mach., Lab. | | 7, 8, 9 | W | | | |
| 107 | Electrical Controls, Rec. | 3 | 5 | MWFS | | | |
| 107 ₁ | Electrical Controls, Lab. | | 4, 5 | TTh | Romanowitz | | |
| 107 ₂ | Electrical Controls, Lab. | | 6, 7 | TTh | | | |
| 108 | Industrial Electronics, Rec. | 3 | 4 | MWFS | | | |
| 108 ₁ | Industrial Electronics, Lab. | | 7, 8, 9 | ThF | Eng | 234 | Romanowitz |
| 108 ₂ | Industrial Electronics, Lab. | | 8, 9, 10 | TW | Boyd | | |
| 110 ₁ | Electrical Laboratory | 1 | 1, 2 | MW | | | |
| 110 ₂ | Electrical Laboratory | 1 | 1, 2 | TTh | | | |
| 110 ₃ | Electrical Laboratory | 1 | 1, 2 | FS | Eng | 130 | Boyd |

COLLEGE OF ENGINEERING—Continued

| Course No. | Subject | Credits | Hour | Days | Building | Room No. | Instructor |
|-------------------------------|--------------------------------------|---------|--------------|-------|----------|----------|-----------------------|
| ENGINEERING—GENERAL | | | | | | | |
| Applied Mechanics | | | | | | | |
| 2 | Mechanisms (Mech.) | 3 | 3 7, 8, 9 | MWFS | Eng | 201 | Barber |
| 3 ₁ | Statics (Mech.) | 3 | | TTh | Eng | 204 | |
| 3 ₂ | Statics (Civil) | 3 | 4 | M-S | Eng | 201 | |
| 3 ₃ | Statics (Elec.) | 3 | 5 | M-S | Eng | 201 | |
| 4 | Dynamics (Civil & Elec.) | 3 | 6 | M-S | Eng | 201 | |
| 6 | Mechanisms (Elec.) | 2 | 3 | MWFS | Eng | 202 | Hawkins |
| 7 | Dynamics (Mech.) | 2 | 2 | MWFS | Eng | 201 | |
| 100 ₁ | Strength of Materials (Elec.) | 3 | 1 | M-S | Eng | 202 | Adams |
| 100 ₂ | Strength of Materials (Civil) | 4 | 1 2 | M-S | Eng | 201 | Barber |
| 100 ₃ | Strength of Materials (Mech.) | 4 | | TTh | | | |
| | | | 3 | M-S | Eng | 202 | Hawkins |
| | | | 4 | M-S | Eng | 202 | Hawkins |
| | | | 5 | MW | Eng | 202 | Adams |
| Engineering Drawing | | | | | | | |
| 1a | Elem. Engineering Drawing | 2 | 1, 2 | M-S | Eng | 216 | Nollau and staff |
| 1b | Descriptive Geometry | 2 | 3, 4 | M-S | Eng | 216 | Nollau and staff |
| *12 ₁ | Graphical Computations (Lec.) | 2 | 5 | TTh | Eng | 235 | Willis |
| *12 ₂ | Graphical Computations (Lec.) | 2 | 7 | TTh | Eng | 235 | Carter |
| *12 ₁₁ | Graphical Computations (Lab.) | | 2, 3 | T | Eng | 204 | Carter |
| *12 ₁₂ | Graphical Computations (Lab.) | | 4, 5 | M | Eng | 204 | Youngblood |
| *12 ₁₃ | Graphical Computations (Lab.) | | 2, 3 | W | Eng | 204 | Willis |
| *12 ₁₄ | Graphical Computations (Lab.) | | 4, 5 | W | Eng | 204 | Streeter |
| *12 ₁₅ | Graphical Computations (Lab.) | | 2, 3 | Th | Eng | 204 | Carter |
| *12 ₁₆ | Graphical Computations (Lab.) | | 4, 5 | F | Eng | 204 | Willis |
| *12 ₁₇ | Graphical Computations (Lab.) | | 2, 3 | S | Eng | 204 | Youngblood |
| *12 ₁₈ | Graphical Computations (Lab.) | | 4, 5 | S | Eng | 204 | Streeter |
| 18 | Advanced Engineering Drawing | 2 | 5, 6 | M-S | Eng | 216 | Nollau and staff |
| Student Assemblies | | | | | | | |
| 2 ₂₁ | Engineering Problems | 1 | 7 | M-Th | Eng | 232 | |
| 2 ₃₁ | Engineering Problems | 1 | 8 | MTThF | Eng | 236 | Baker |
| MECHANICAL ENGINEERING | | | | | | | |
| †15a ₁ | Manufacturing Processes (Lec.) | 2 | 5 | MTh | Eng | 232 | Carter |
| †15a ₁₁ | Manufacturing Processes (Lab.) | | 7, 8, 9, 10 | MTh | Eng | 110c | Mangelsen |
| †15a ₁₂ | Manufacturing Processes (Lab.) | | 7, 8, 9, 10 | TF | Eng | 110c | Mangelsen |
| †15b ₁ | Manufacturing Processes (Lec.) | 2 | 5 | TF | Eng | 232 | Carter |
| †15b ₁₁ | Manufacturing Processes (Lab.) | | 7, 8, 9, 10 | W | Eng | 110c | Mangelsen |
| 100b | Machine Design (Lec.) | 3 | 2, 3, 4, 5 | S | Eng | 110c | |
| | | | 3 | MWF | Eng | 235 | Carter |
| 104a | Engineering Thermodynamics | 3 | 8, 9, 10 | TThF | Eng | 204 | |
| 104b | Engineering Thermodynamics | 3 | 4 | M-S | Eng | 235 | Streeter |
| 105 | Power Plant Engineering | 3 | 3 | M-S | Eng | 236 | Savage |
| 107 | Fluid Mechanics | 3 | 4 | M-S | Eng | 236 | Stewart |
| †112 ₁ | Mechanical Laboratory (Lec.) | 2 | 2 | M-S | Eng | 236 | Savage |
| †112 ₁₁ | Mechanical Laboratory (Lab.) | | 3 | MW | Eng | 235 | Baker |
| | | | 9, 10, 11 | MW | Eng | 131a | Streeter and Baker |
| †112 ₁₂ | Mechanical Laboratory (Lab.) | | 9, 10, 11 | TTh | Eng | 131a | Willis and Youngblood |
| †113a ₁ | Mechanical Laboratory (Lec.) | 2 | 4 | MW | Eng | 235 | Knight |

* Student must sign for one lecture and three laboratory sections.
 † Student must sign for one lecture and one laboratory section.

COLLEGE OF ENGINEERING—Continued

| Course No. | Subject | Credits | Hour | Days | Building | Room No. | Instructor |
|----------------------------------|--|---------|------------------|------|----------|----------|------------|
| MECH. ENGRG.—Cont. | | | | | | | |
| †113a ₁₁ | Mechanical Laboratory (Lab.).. | | 6, 7, 8 | MF | Eng | 131a | Streeter |
| †113a ₁₂ | Mechanical Laboratory (Lab.).. | | 6, 7, 8 | MTh | Eng | 131a | Knight |
| †113b ₁ | Mechanical Laboratory (Lec.).. | 2 | 4 | TTh | Eng | 235 | Youngblood |
| †113b ₁₁ | Mechanical Laboratory (Lab.).. | | 6, 7, 8 | W | Eng | 131a | Savage |
| | | | 9, 10, 11 | F | Eng | 131a | |
| 114b | Air Conditioning, Heating and Ventilating Design | 3 | 3 | TTh | Eng | 235 | Knight |
| | | | 7, 8, 9, 10 | MWF | Eng | 204 | |
| 122b | Seminar | 1 | 9, 10 | TTh | Eng | 235 | Knight |
| 129 | Elements of Heat Transfer | 4 | 5 | M-S | Eng | 236 | Stewart |
| | | | 2 hrs. by Appt. | | | | |
| 134 | Elements of Engineering Thermodynamics | 3 | 2 | M-S | Eng | 236 | Baker |
| 114 ₁ | Alternating Current Circuits, Lec. and Rec. | 4 | 1 | M-S | Eng | 232 | Noble |
| 114 ₁₁ | Alternating Current Circuits, Lab. | | 2, 3, 4 | TTh | | | |
| 114 ₁₂ | Alternating Current Circuits, Lab. | | 2, 3, 4 | MW | | | |
| 114 ₁₃ | Alternating Current Circuits, Lab. | | 8, 9, 10 | TTh | | | |
| 114 ₂ | Alternating Current Circuits, Lec. and Rec. | 4 | 1 | M-S | Eng | 206 | Nierenberg |
| 114 ₂₁ | Alternating Current Circuits, Lab. | | 8, 9, 10 | MW | Eng | 130 | |
| 114 ₂₂ | Alternating Current Circuits, Lab. | | 2, 3, 4 | FS | Eng | 130 | |
| 114 ₂₃ | Alternating Current Circuits, Lab. | | 4, 5, 6 | MW | Eng | 130 | |
| 115 | Direct Current Machinery | 3 | 4 | MWFS | Eng | 232 | Noble |
| | | | 4, 5, 6 | TTh | | | |
| 116 | Alternating Current Machinery | 4 | 2 | M-S | Eng | 232 | Barnett |
| | | | 3, 4, 5 | FS | | | |
| 120 | Electrical Circuit Analysis | 3 | 2 | M-S | Eng | 234 | Allison |
| 123 | Electrical Equipment Problems | 2 | 12 hrs. by Appt. | | | | Bureau |
| 124 | Electrical Design | 2 | 12 hrs. by Appt. | | | | Barnett |
| 135 | Electrical Networks, Rec. | 4 | 3 | M-S | | | Allison |
| 135 ₁ | Electrical Networks, Lab. | | 4, 5, 6 | MW | | | Allison |
| 135 ₂ | Electrical Networks, Lab. | | 4, 5, 6 | TTh | | | Allison |
| 135 ₃ | Electrical Networks, Lab. | | 7, 8, 9 | MW | | | |
| 151b | Seminar | 1 | 3, 4 | TTh | Eng | 232 | Romanowitz |
| 161 | Electronics, Rec. | 4 | 1 | M-S | | | |
| 161 ₁ | Electronics, Lab. | | 2, 3, 4 | MW | | | |
| 161 ₂ | Electronics, Lab. | | 2, 3, 4 | TTh | | | |
| 161 ₃ | Electronics, Lab. | | 7, 8, 9 | TTh | | | |
| 162 | Radio Engineering I, Rec. | 4 | 1 | M-S | Eng | 234 | Romanowitz |
| 162 ₁ | Radio Engineering I, Lab. | | 2, 3, 4 | FS | | | |
| 162 ₂ | Radio Engineering I, Lab. | | 7, 8, 9 | MT | | | |
| 162 ₃ | Radio Engineering I, Lab. | | 2, 3, 4 | MW | | | Romanowitz |
| METALLURGICAL ENGINEERING | | | | | | | |
| 26 | Engineering Metallurgy | 2 | 4 | MWFS | Eng | 240 | Gerhard |
| 142b | Heat Treatment | 2 | 8 hrs. by Appt. | | Eng | | Orrell |
| 143b | Physics of Metals | 3 | 10 hrs. by Appt. | | Eng | | Orrell |
| 144 | Ferrous and Non-Ferrous Metallography | 3 | 14 hrs. by Appt. | | Eng | | Orrell |

†Student must sign for one lecture and one laboratory section.

COLLEGE OF LAW
Intersession, Summer, 1948 (June 7-19)

| Course No. | Subject | Credits | Hour | Days | Building | Room No. | Instructor |
|------------|-------------------|---------|------|-------------------|----------|----------|------------|
| C141 | Partnership | 1 | 2 | {MTW } {ThFS } | L | 213 | Matthews |
| *C147 | Restitution | 1 | 2 | {MTW } {ThFS } | L | 212 | Murray |
| *C152 | Oil and Gas | 1 | 3 | MT WTh | | | |
| | | | 5 | {MTW } {ThFS } | L | 212 | Moreland |
| C154 | Damages | 1 | 3 | FS | | | |
| | | | 4 | {MTW } {ThFS } | L | 213 | Oberst |

Summer Session, June 18-August 14

| First Year Subjects | | | | | | | |
|----------------------|---|-----|---|------------------|---|-----|----------|
| C101b | Contracts II | 3.5 | 2 | {MTW } {Th } | L | 100 | Murray |
| C102b | Torts II | 4 | 3 | {MTW } {FS } | L | 100 | Oberst |
| | | | 5 | TThF | | | |
| Second Year Subjects | | | | | | | |
| 124 | Evidence | 4 | 2 | MTW | | | |
| | | | 4 | {MTW } {ThF } | L | 212 | |
| C149 | Municipal Corporations | 1.5 | 3 | ThFS | L | 212 | Stahr |
| C174 | Credit Transactions— Mortgages | 2 | 5 | TWThF | L | 212 | Matthews |
| Third Year Subjects | | | | | | | |
| C150 | Public Utilities | 3.5 | 3 | MTW | | | |
| | | | 5 | MTWTh | L | 213 | Moreland |
| 170 | Legal Ethics | 2 | 2 | WThFS | L | 213 | Matthews |
| C180 | Labor Law | 2 | 4 | TThFS | L | 213 | Stahr |

* A continuation of this course will be offered for one semester credit in the 1949 intersession.

COLLEGE OF EDUCATION

A standing of 1.0 is required for admission to any course in the College of Education.

| Course No. | Subject | Credits | Hour | Days | Building | Room No. | Instructor |
|--|---|---------|------|----------|----------|----------|--------------------|
| DIVISION OF ADMINISTRATION | | | | | | | |
| 101 | School Organization | 3 | 3 | M-S | E | 140 | Adams, H. P. |
| 198 | The Administration of Pupil Personnel | 3 | 1 | M-S | E | 140 | Ridgway |
| Courses open only to Graduate Students: | | | | | | | |
| 202 | Local School Administration | 3 | 2 | M-S | E | 222 | Meece |
| C221a | Seminar in Administration | 3 | 4 | M-S | E | 144a | Cherry |
| 231 | Business Administration and Finance of Public Education.. | 3 | 3 | M-S | E | 131 | Meece |
| DIVISION OF FOUNDATIONS OF EDUCATION | | | | | | | |
| 119 | The Elementary School Pupil.. | 2 | 3 | T-F | E | 136 | |
| 122 | Educational Tests and Measurements | 3 | 4 | M-S | E | 131 | |
| 147 | The Secondary School Pupil.. | 2 | 1 | T-F | E | 222 | |
| Courses open only to Graduate Students: | | | | | | | |
| 201 | Foundations in Education | 5 | 4, 5 | M-F | E | 222 | Hartford, Sorenson |
| 220 | Comparative Education | 3 | 5 | M-S | E | 140 | Robinson, H. C. |
| 223 | Educational Statistics | 3 | 2 | M-S | E | 131 | Sorenson |
| 230 | Educational Sociology | 3 | 2 | M-S | E | 136 | Hartford |
| 255a | Guidance and Counseling in Today's Schools | 3 | 7, 8 | M-F | E | 131 | Davis |
| (June 18-July 17) | | | | | | | |
| 255b | Guidance and Counseling in Today's Schools | 3 | 7, 8 | M-F | E | 131 | Davis |
| (July 19-August 14) | | | | | | | |
| DIVISION OF INSTRUCTION AND PLACEMENT | | | | | | | |
| Business Education | | | | | | | |
| 104 | Foundations of Business Education in the High School | 3 | 2 | M-S | WH | 401 | |
| 158a | Teaching Secretarial Subjects.. | 2 | 3 | M-Th | WH | 103 | Thomas |
| 158b | Teaching Accounting | 2 | 1 | M-Th | WH | 101 | |
| 184 | Teaching Office Appliances | 2 | 6 | M-Th | WH | 101 | |
| 194 | Teaching Consumer Courses in the High School | 3 | 3 | M-S | WH | 401 | |
| Courses open only to Graduate Students: | | | | | | | |
| 208a-d | Problems in Business Education | 3 | | By Appt. | WH | 203 | Hoover |
| 257a, d | Seminar in Business Education | 1 | | By Appt. | WH | 203 | Hoover |
| 259 | The Commerce Curriculum | 3 | 3 | M-S | WH | 303 | Hoover |
| 271 | Administration and Super- vision of Business Education | 3 | 4 | M-S | WH | 401 | Hoover |
| 272a, b | Independent Work in Business Education | 3 | | By Appt. | WH | 203 | Hoover |

COLLEGE OF EDUCATION—Continued

| Course No. | Subject | Credits | Hour | Days | Building | Room No. | Instructor |
|---|--|---------|------|----------|----------|-----------|-----------------------------------|
| DIV. OF INSTRUCTION AND PLACEMENT—Continued Curriculum and Instruction | | | | | | | |
| 175f | Modern Educational Problems.. (July 28–August 14) | 3 | | By Appt. | E | Rec. Room | Baldree |
| 175g | Modern Educational Problems: Education of Handicapped Children | 3 | 6 | M–S | E | 222 | Retherford |
| 186 | Visual Teaching | 3 | 1 | M–S | FH | B | Godbey |
| Courses open only to Graduate Students: | | | | | | | |
| C225 | Supervision of Instruction | 3 | 3 | M–S | E | 222 | Spain |
| 234 | Problems of Curriculum Making | 3 | 8 | M–F | E | 222 | Spain |
| 245 | Organization of Audio-Visual Aids (June 18–July 8)..... | 3 | | By Appt. | E | Rec. Room | Ginger, Godbey, Robinson |
| Elementary Education | | | | | | | |
| C20 | Industrial Arts in the Ele- mentary School | 2 | 2, 3 | T–F | E | 170 | Haines |
| 110 | Art and Craft Activities in the Elementary School | 2 | 4, 5 | MTThF | E | 170 | Haines |
| *C133 | Student Teaching in the Ele- mentary School | 6 | | By Appt. | E | 126 | Ginger & Super- vising T'chers |
| 172 | The Teaching of Reading | 3 | 2 | M–S | E | 140 | Duncan |
| 196 | Science in the Elementary School | 3 | 5 | M–S | E | 131 | Kelley |
| Courses open only to Graduate Students: | | | | | | | |
| 229 | The Elementary Principal | 3 | 4 | M–S | E | 140 | Duncan |
| Secondary Education | | | | | | | |
| 105 | Fundamentals of Secondary Education | 3 | 8 | M–F | E | 140 | Dickey |
| Courses open only to Seniors and Graduate Students: | | | | | | | |
| *C153 ₁ | Student Teaching in English | 6 | | By Appt. | E | 107 | Anderson |
| *C153 ₂ | Student Teaching in English | 6 | | By Appt. | E | 201 | Shipman |
| *C153 ₃ | Student Teaching in English | 6 | | By Appt. | E | 101 | Neubauer |
| *C153 ₄ | Student Teaching in English | 6 | | By Appt. | E | 108 | Trolinger |
| *C154 | Student Teaching in Languages | 6 | | By Appt. | E | 208 | Robinson |
| *C155 | Student Teaching in the Sciences | 6 | | By Appt. | E | 204 | Kemper |
| *C156 | Student Teaching in Mathematics | 6 | | By Appt. | E | 211 | Porter |
| *C157 ₁ | Student Teaching in the Social Studies | 6 | | By Appt. | E | 207 | Peck |
| *C157 ₂ | Student Teaching in the Social Studies | 6 | | By Appt. | E | 201 | Shipman |
| *C157 ₃ | Student Teaching in the Social Studies | 6 | | By Appt. | E | 101 | Neubauer |
| *C193 | Student Teaching in Business Education | 6 | | By Appt. | E | 134 | McMurtry |
| Courses open only to Graduate Students: | | | | | | | |

* Application should be made in advance in order that prerequisites may be checked.

COLLEGE OF EDUCATION—Continued

| Course No. | Subject | Credits | Hour | Days | Building | Room No. | Instructor |
|--|--|---------|------|----------|----------|----------|---------------------------|
| DIV. OF INSTRUCTION AND PLACEMENT—Continued | | | | | | | |
| 214 | The Secondary School | 3 | 5 | M-S | E | 144a | Dickey |
| 232 | High School Administration | 3 | 7 | M-F | E | 222 | Cherry |
| DIVISION OF VOCATIONAL EDUCATION | | | | | | | |
| Agricultural Education | | | | | | | |
| 179 | Determining Content in Vocational Agriculture | 3 | | By Appt. | E | 226 | Hammonds, Wall |
| | (June 18-July 7) | | | | | | |
| 185a | Problems in Agricultural Education | 3 | | By Appt. | E | 240 | Tabb, Cox |
| | (July 26-August 14) | | | | | | |
| 185b | Problems in Agricultural Education (July 8-24) | 3 | | By Appt. | E | 245 | Tabb |
| | Courses open only to Graduate Students: | | | | | | |
| 285a | Modern Problems in Agricultural Education | 3 | | By Appt. | E | 226 | Hammonds |
| | (July 26-August 14) | | | | | | |
| 287a | Advanced Problems in Agricultural Education | 3 | | By Appt. | E | 219 | Hammonds, Armstrong, Tabb |
| 287b | Selecting Teaching Materials..... | 3 | | By Appt. | E | 226 | Wall |
| | (July 8-24) | | | | | | |
| 287c | Adult-Farmer Schools | 3 | | By Appt. | E | 240 | Tabb |
| | (June 18-July 7) | | | | | | |
| 287d | Directing Farm Practice | 3 | | By Appt. | E | 240 | Hammonds |
| | (July 8-24) | | | | | | |
| 287f | Young-Farmer Schools | 3 | | By Appt. | E | 245 | Wall |
| | (July 26-August 14) | | | | | | |
| 289a, b | Research in Agricultural Education | each 3 | | By Appt. | E | 219 | Hammonds, Armstrong, Tabb |
| Distributive Education | | | | | | | |
| 116 | Problems of the Coordinator in Distributive Education | 3 | | By Appt. | E | 136 | Baker |
| | (uly 29-August 14) | | | | | | |
| Home Economics Education | | | | | | | |
| 165 | Adult Education in Home Economics (June 18-July 17) | 3 | 1, 3 | M-S | E | Cafe | |
| | Courses open only to Graduate Students: | | | | | | |
| 263 | Current Problems in Home Economics Education | 3 | 1, 3 | M-S | E | Cafe | Parker |
| | (July 19-August 14) | | | | | | |
| 265a, b ₁ | Independent Work in Home Economics Education..... | each 3 | | By Appt. | E | 218 | Parker |
| | (June 18-July 17) | | | | | | |
| 265a, b ₂ | Independent Work in Home Economics Education..... | each 3 | | By Appt. | E | 218 | Parker |
| | (July 19-August 14) | | | | | | |

COLLEGE OF EDUCATION—Continued

| Course No. | Subject | Credits | Hour | Days | Building | Room No. | Instructor |
|---|---|---------|------|------|----------|----------|------------|
| DIV. OF VOCATIONAL EDUCATION—Continued | | | | | | | |
| Home Economics Ed.—Cont. | | | | | | | |
| 268 | Home Economics Curriculum Construction (July 19–August 14) | 3 | 2, 4 | M–S | E | Cafe | Sneed |
| 269 | Evaluation in Home Economics Education (June 18–July 17) .. | 3 | 2, 4 | M–S | E | Cafe | Parker |
| Industrial Education | | | | | | | |
| 71 | Trade Analysis (June 21–July 2) | 2 | 2, 3 | M–F | E | 144a | Crumpton |
| 77 | Shop Management Problems..... (August 16–27) | 2 | 2, 3 | M–F | E | 222 | Crumpton |
| 82 ₁ | Instructional Materials in Industrial Education (June 21–July 2) | 2 | 2, 3 | M–F | E | 144b | Hankins |
| 82 ₂ | Instructional Materials in Industrial Education (August 2–13) | 2 | 2, 3 | M–F | E | 144a | Hankins |
| 134 | Organization and Operation of Part-Time and Evening Classes (August 2–13) | 2 | 2, 3 | M–F | E | 144b | Crumpton |
| 171a | Principles and Philosophy of Industrial Education (August 16–27) | 2 | 2, 3 | M–F | E | 222 | Hankins |

COLLEGE OF COMMERCE

| Course No. | Subject | Credits | Hour | Days | Building | Room No. | Instructor |
|------------------|----------------------------------|---------|------|----------|----------|----------|------------|
| ECONOMICS | | | | | | | |
| 1 ₁ | Principles of Economics | 3 | 1 | M-S | WH | 103 | Ellis |
| 1 ₂ | Principles of Economics | 3 | 2 | M-S | WH | 103 | Tolman |
| 1 ₃ | Principles of Economics | 3 | 5 | M-S | WH | 103 | Tolman |
| *2 | Economic History of Europe | 3 | 2 | M-S | WH | 101 | Jennings |
| *3 | Economic History of the U. S.... | 3 | 3 | M-S | WH | 101 | Jennings |
| 16 | Tutorial Work in Economics..... | 1 | | By Appt. | WH | | Carter |
| 102 | Labor Problems | 3 | 2 | M-S | WH | 102 | Carter |
| | (Prereq.: Econ. 1) | | | | | | |
| 104 | Public Finance | 3 | 2 | M-S | WH | 205 | Sullivan |
| | (Prereq.: Econ. 1) | | | | | | |
| 105 | Money and Banking | 3 | 4 | M-S | WH | 303 | Carpenter |
| | (Prereq.: Econ. 1) | | | | | | |
| 107 | Statistical Method, Rec., Lab... | 3 | 5, 6 | MTThF | WH | 401 | Carpenter |
| 112a-f | Individual Work in | | | | | | |
| | Economics | each 1 | | By Appt. | | | Staff |
| 115 | Value and Distribution Theory | 3 | 5 | M-S | WH | 205 | Sullivan |
| 202a, b | Seminar | each 1 | | By Appt. | WH | 205 | Sullivan |
| 212a-f | Research Problems in | | | | | | |
| | Economics | each 1 | | By Appt. | WH | | Staff |
| COMMERCE | | | | | | | |
| 7a | Principles of Accounting, Rec... | 4 | 7 | MTThF | WH | 103 | Ellis |
| | Principles of Accounting, Lab... | | 8, 9 | MTThF | WH | 306 | Ellis |
| *9 ₁ | Business Organization | 3 | 2 | M-S | WH | 303 | Pickett |
| 10 | Principles of Marketing | 3 | 5 | M-S | WH | 303 | DeVoe |
| | (Prereq.: Econ. 1) | | | | | | |
| *†13a | Secretarial Pract., Shorthand... | 3 | 4 | M-S | WH | 101 | Humphreys |
| | (Prereq. or concurrent: | | | | | | |
| | Eng. 1a) | | | | | | |
| †13b | Secretarial Pract., Shorthand... | 3 | 2 | M-S | WH | 301 | |
| | (Prereq.: Com. 13a or | | | | | | |
| | equivalent) | | | | | | |
| 14a | Advanced Secretarial Practice... | 3 | 4 | M-S | WH | 301 | Thomas |
| 14b | Advanced Secretarial Practice... | 3 | 4 | M-S | WH | 301 | Thomas |
| *17a | Secretarial Pract., Typewriting | 2 | 1 | MTThF | WH | 301 | |
| | (Prereq. or concurrent: | | | | | | |
| | Eng. 1a) | | | | | | |
| 17b | Secretarial Pract., Typewriting | 2 | 3 | MTThF | WH | 301 | Humphreys |
| | (Prereq.: Com. 17a) | | | | | | |
| 20 | Principles of Advertising | 3 | 1 | M-S | WH | 303 | McIntyre |
| | (Prereq.: Com. 10) | | | | | | |
| 106a | Intermediate Accounting | 3 | 2 | M-S | WH | 306 | Beals |
| | (Prereq.: Com. 7a and b) | | | | | | |
| 108 | Accounting Theory | 2 | 7 | MTThF | WH | 101 | Beals |
| | (Prereq.: Com. 106b) | | | | | | |
| 109b | Business Law | 3 | 1 | M-S | WH | 103 | Haun |
| 117 | Corporation Finance | 3 | 4 | M-S | WH | 102 | Pickett |
| | (Prereq.: Econ. 1, Com. 7a, | | | | | | |
| | 7b) | | | | | | |
| 119 | Retail Merchandising | 3 | 3 | M-S | WH | 103 | McIntyre |
| 133 | Income Tax Procedure | 3 | 3 | M-S | WH | 205 | Haun |
| | (Prereq.: Com. 106a and | | | | | | |
| | 106b) | | | | | | |
| 135 | Advanced Marketing | 3 | 3 | M-S | WH | 102 | DeVoe |
| | (Prereq.: Com. 10) | | | | | | |
| 145 | Office Management | 3 | 4 | M-S | WH | 103 | Hoover |
| 155 | Industrial Relations | 3 | 5 | M-S | WH | 102 | Carter |

* Open to freshmen.

† No credit for 13b until 13a is completed.

