

INSURANCE MAPS

Wenestoro

KENTUCKY

PUBLISHED BY THE

SANBORN MAP COMPANY

SCALE 50 FT. TO AN INCH OCTOBER 11 BROADWAY NEW YORK

Copyright 1905, by the Sanborn Map Co.

Map Division
JAN 11 1906
Library of Congress

LIBRARY OF CONGRESS
DEC 29 1905
CLASS 717.105
CLASS 717.105
CLASS 717.105

INDEX

STREETS

Alexander Alley	16
Allen	3
400-633 14	
700-325 22	
1100-1331 30	
Anthony	see Eighth
Bhuff Ave.	34
Bolivar	100-332 *7
101-333 *8	
400-632 *15	
401-631 *16	
700-324 24	
400-632 17	
700-321 26	
Brick	34
Center	100-333 9
401-631 *17	
800-1024 *3	
Cherry	700-329 23
700-324 *3	
Chestnut E.	100-1127 30
200-327 31	
W	100-321 30
300-323 7	
400-633 15	
700-323 21	
100-333 7	
Crittenden	100-333 7
400-633 15	
700-324 *3	
701-321 *24	
Davies	100-325 6
400-635 14	
700-322 *22	
701-323 *23	
1000-1226 *31	
1001-1227 *30	
Dubin Ave.	3-36 5
Eighth E.	200-325 29
300-325 25	
600-825 15	
1000-1225 26	
1300-1426 *27	
1901-1215 *26	
W	100-321 22
300-324 30	
900-1218 19	
Eleventh E.	1401-1229 *27
W	300-327 28
600-827 28	
Elizabeth	100-323 5
100-322 *14	
101-321 *4	
400-632 *11	
100-322 *12	
700-326 20	
1000-1309 28	
900-1027 *21	
Fifth E.	100-225 14
600-824 16	
900-1126 17	
1200-1217 16	
W	100-123 14
200-325 13	
300-325 13	
800-1100 11	
1400-1200 33	
Fourth E.	101-321 *8
100-322 *9	
301-323 *7	
600-824 *16	
101-317 *12	
801-927 *9	
800-1118 *17	
1001-1111 *10	

McFarland	see Ninth
Main	see Second
Maple	8-234 *2
500-722 *12	
501-725 *4	
800-1026 *11	
801-1025 *2	
Maryland	300-333 31
Middle Ave.	400-331 32
Milled	see Eighth
Mill Ave.	34
Monarch	200-331 33
Morland Ave.	900-329 19
Moseley	900-344 *23
301-341 *24	
400-1228 *11	
100-1223 *23	
1000-1205 33	
near Kentucky	
Mulberry	101-129 *35
108-146 *4	
148-233 4	
400-635 15	
700-324 *20	
701-323 *21	
801-1025 *22	
901-1026 *29	
Ninth E.	100-123 22
400-635 14	
700-325 22	
700-326 23	
1800-1825 37	
1800-1827 36	
1800-1825 37	
W	100-121 21
301-327 *21	
301-328 *22	
800-1215 19	
1637-1709 35	
North Ave.	34
Oglesby Ave.	900-1031 27
Orchard	119-234 2
Parrish Ave.	28
Pearl	100-322 *8
101-323 *9	
S of Ninth 25	
Plum	13-233 2
627-826 19	
100-321 3	
400-633 11	
700-306 *10	
701-923 *20	
Railroad	34
Ravine, N	600-825 4
S	400-626 *5
401-625 *20	
500-324 *4	
St. Ann	100-322 *3
800-1023 3	
400-632 *13	
401-631 *14	
1300-1331 30	
600-725 8	
900-325 9	
100-126 6	
200-425 5	
500-725 4	
100-125 6	
1100-1153 31	
1200-1229 32	
1600-1709 *23	
see Eleventh	
Litlous Ave.	100-320 *12
144-328 *4	
400-620 *12	
401-617 *12	
619-629 *21	
700-327 31	
800-1021 30	
Seventh E.	100-120 20
101-224 *11	
200-322 *23	
301-323 *13	
400-622 *24	
601-831 *16	
700-830 *23	
801-825 *17	
900-1125 *12	
900-1216 *26	
1201-1229 *25	
100-230 *25	
500-224 *21	
600-725 8	
700-825 9	
800-1125 17	
100-1213 19	
1200-1202 18	
1200-1229 32	
100-233 2	
100-232 3	
100-231 4	
100-230 5	
100-229 6	
100-228 7	
100-227 8	
100-226 9	
100-225 10	
100-224 11	
100-223 12	
100-222 13	
100-221 14	
100-220 15	
100-219 16	
100-218 17	
100-217 18	
100-216 19	
100-215 20	
100-214 21	
100-213 22	
100-212 23	
100-211 24	
100-210 25	
100-209 26	
100-208 27	
100-207 28	
100-206 29	
100-205 30	
100-204 31	
100-203 32	
100-202 33	
100-201 34	
100-200 35	

SPECIALS

American Milling Co.	7
American Tobacco Co.	22-28 35
Ames, F. A. & Co. Carriage Factory	3
Applegate, G. L. & Co. Distillery (formerly)	33
Asbury M. E. Church	33
Baptist Church Colored	25
Barrett, J. H. & Co., Stemmery	16
Barrow, T. M. Coal Yard	35
Baxley, J. L., Feed Mill	32
Beckwood Distilling Co., formerly Bell, J. H. Stemmery	33
Birk, C. E. Stemmery	18
Brooks, C. & Co. Flour-mill and Elev.	32
Bryan, H. O., Junk Shop	6
Carriage Wood Stock Co.	34
Cheatham, J. W. Stemmery	5
Citizens Ice and Cold Storage Co.	31
Hospital	6
City Hall	25
St. R. R. Power House, etc.	17
School	7
Cooke, N. H., Stemmery	5
Columbus Hotel	5
County Court House	5
Cumberland Presbyterian Church	13
Davies Co., Distilling Co.	40
County Public W. H. Co.	39
Eagle Distillery Co.	42
Electric Planning Mill Co.	20
Elliot, J. D., Stemmery	32
Evans, R. O., Co. Furniture M'fy.	34
Farmers Hotel	8
First Baptist Church	6
Fire Department	6 & 8
First Christian Church	25
First Presbyterian Church	13
Fourth St. Presbyterian Church	7
Baptist Church	3
Gallagher Limited, Stemmery	19
German Evangel. Zion's Church	4
Gilbert, J. W. Sons, Flour-mills	4
Gilmore W., Stemmery	8
Glenmore Distilling Co.	38
Grand Central Hotel	5
Theatre	6
Green River Distillery Co.	40
Griffin, J. B. & Co. Planning-mill formerly	32
Guenther, W. A. & Sons, W. H.	4, 5 & 33
Gunter Wright Machine Co.	7
Hazel M. Grist Mill	18
Hickman-Elliott & Co., Wagon M'fy.	36
Higdon, J. L., Stemmery	17
High Grade Vehicle Co.	11
Hogland Buggy Co.	34
Hotel Brann	16
Ill. Central R. R. Stock Yard	27
Ill. Central R. R. Deposits	10
Imperial Tobacco Co., Stemmery	4 and 31
Kentucky Buggy Co.	23
Kentucky Distill' & W. H. Co.	37 and 39
Electric Co.	23
Lashbrook Bro. Saw Mill	27
Leas Machine Works	34
Long & Butler, Stemmery	17
L. & N. R. R. Deposits	35
L. H. & St. L. R. R. Deposits	30
May House	5
Massie, J. E. & Bro., Stemmery	15
Mattingly, M. P., Distillery	41
Messinger, G. W., Slaughter-house	35
Methodist Church, Mosley St.	21
Episc. Colored	11
Hins, F., Slaughter-house	35
Miller, D. C. & Co., Stemmery	33
Miller, T. C., Greenhouse	16
Morgan Lumber Co.	35
Municipal Elec. Light Plant	31
Nantz, C. G., Greenhouses	15
Navé, J. H. & Co., Stemmery	16
New Blue Grass Canning Co.	35
O'Flynn, P. E. Stemmery	25
Buggy Co.	19
Brick & Sewer Pipe Co.	33
College	36
Forging Co.	34
Gas Light Co.	3
High Grade Vehicle Co.	3
High School	29
Ice M'fy. & Cold Storage Co.	5
Planning-mill Co.	33
Lumber Co. Saw Mill	32
Public Warehouse Co. formerly	35
Sand Lime Brick Co.	22
Shoet & Tool Co.	33
Stave & Barrel Co.	36
Wagon Co.	10
Water Works Co.	8
Wheel Co.	22
Planters' House	5
Price-Klein Co. M'f's Furniture	34
Pulliam Hotel	10
Robby Hotel	5
Rock Spring Distilling Co.	41
Rudd Hotel	6
St. Francis Academy	14
Hotel	29
Paul's Catholic Church	15
Stephens' Catholic Church	4
Sample, D. F., Cooper Shop	37
Schuck Bros. Slaughter House	48
Settle Memorial M. E. Church	6
Seven Hills Brick Co.	24
Fifth St. Planning Mill Co.	19
Street School	16
Smith, W. J., Slaughter House & Ice Fac.	38
Snow Hill School, Colored	26
Southern Foundry Co.	31
Standard Oil Co.	31
Star Mills	33
Stimson, J. V. & Co., Saw-Mill	31
Stone, W. S., Distillery	42
Stout, G. W., Cooperage	19
Sweeney Warehouse Company	32
Synagogue	14
Temple Theatre	6
Tenn. J. A., Lumber Yard	17
J. J., Coal Yard	23
Third Baptist Church	13
Thompson, G. N., Stemmery	9
Trinity Episc. Church	14
Turpin & Wood, Tobacco Stemmery	11, 16
U. B. Hall, Colored	4
U. S. Custom House & P. O.	6
Vaughan, J. M. & Co., Stemmery	24
W. Main St. School	2
Volman Buggy Body Co.	34
Walnut St. Baptist Church	13
School	12
Western St. Baptist Church	35
Werner High School	3
W. Main St. School	2
Whitely, W. E., Stemmery	4
Whitey, J. W. & Co., Candy Factory	6
Yager-Small Co., Wagon Works	9
Y. M. C. A. Building	6

* Indicates only one side of street shown

Population 20,000, Prevailing Winds S.W.

WATER FACILITIES
 Old system of water works owned by Stock Corporation. Holly system. Water supply from Ohio River. One Buffalo compound condensing crank and fly wheel steam pump 68' dia x 18' x 36' capacity 4 million galls per day, also one compound condensing crank and fly wheel steam pump, designed by J.W. Harris 15' dia x 24' x 30' capacity 2 million galls per day. Pump cylinders 40 ft below pump flange. Two separate wells for each. 2.5 Miles of water pipes. (18 miles laid in 1879 and 5 miles in 1887 and 1888) Water pipes have flushing gates, flushing done three to five times yearly. Diameter of water pipes 4" to 18", 163 double hydrants. Domestic pressure 60 lbs. Fire pressure 80 to 125 lbs per sq inch. Average daily consumption 1 1/2 million galls.
 Water pipes shown on detail sheets thus: $\text{---} \text{---}$, and on key plan, thus: $\text{---} \text{---}$ hydrants $\text{---} \text{---}$ and on key plan, thus: ---

New system of water works owned by the city, direct pressure system. Water supply from 20 deep wells. Water pumped from wells by compressors air. Water purifies to two reservoirs of one million galls capacity each, located on Harbinsburg Road, 14 miles East of Post Off Pumping Station, not built at line of survey. To have two 10' dia crank and fly wheel pumps, capacity three million galls each per day. 30' suction, 20' discharge. 2.9 Miles of water pipes, 6" to 20" diam. 230 triple hydrants. Domestic pressure 60 lbs. Fire pressure 80 to 125 lbs per sq inch. Independent cut-off on each hydrant in business or manufacturing districts.
 Water pipes shown on detail sheets, thus: $\text{---} \text{---}$, and on key plan, thus: --- hydrants --- and on key plan, thus: ---

The new system is to be completed about January 1906, and as soon as it is in operation the old system will be abandoned.

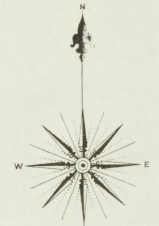
FIRE DEPARTMENT
 Paid 12 men and chief. Two fire stations with day and night watchman at each. 8 trained horses. Swinging harness. Automatic gas lights. Automatic trap and front doors, and chain drop to release horses. Responsive service. 1/2 seconds.
 Gaymans Fire alarm telegraph system. 24 boxes. Register and gong at each hose house and at water works. Steam whistle at water works indicates station by code. Telephone service. One combination hose and chemical wagon.
 One 4 wheel Preston hose cart.
 One double 60 gal overhead engine, 1000 ft 1" rubber hose attached, with shut off nozzle. One hook & ladder truck with 150' ft of ladders.
 One four wheel hose reel in reserve.
 300 ft 2 1/2" rubber hose and 800 ft 1 1/2" cotton rubber lined hose in good condition, and 1600 ft 2 1/2" second class hose.
 Streets level. Streets paved as shown. Public lights, gas and electric.

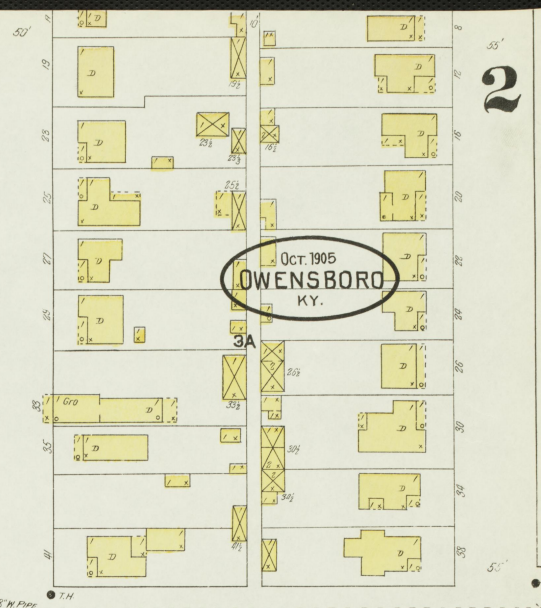
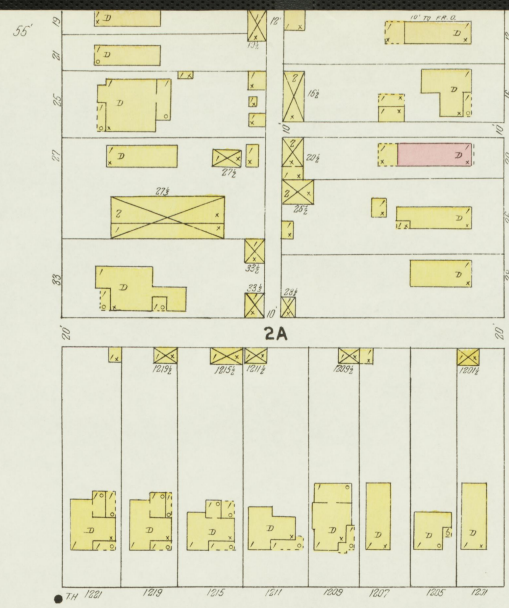
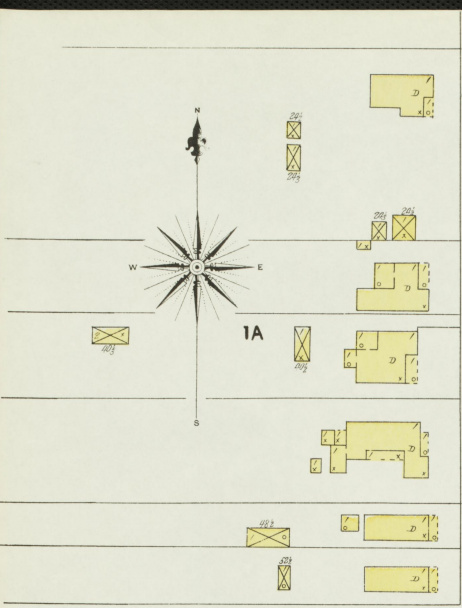
KEY

THE WALL OR AN ROOM
 METAL CORNER OR ROOF
 METAL WALL OR ROOF
 WOOD CORNER
 THE WALL OR AN ROOM
 FRAME PARTITION
 OPENING WITH SHUT DOOR
 WINDOW WITH SHUT DOOR
 WINDOW WITH SHUT DOOR
 WINDOW WITH SHUT DOOR
 WINDOW WITH SHUT DOOR
 WINDOW WITH SHUT DOOR

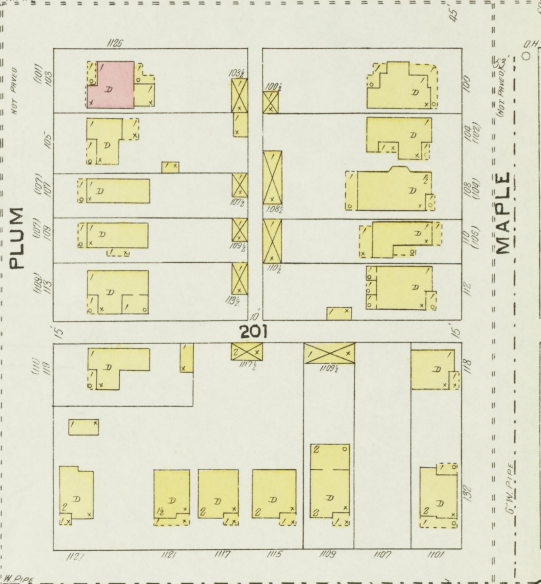
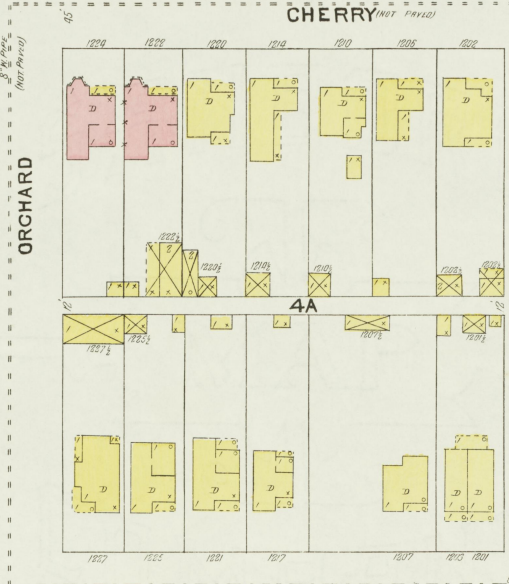
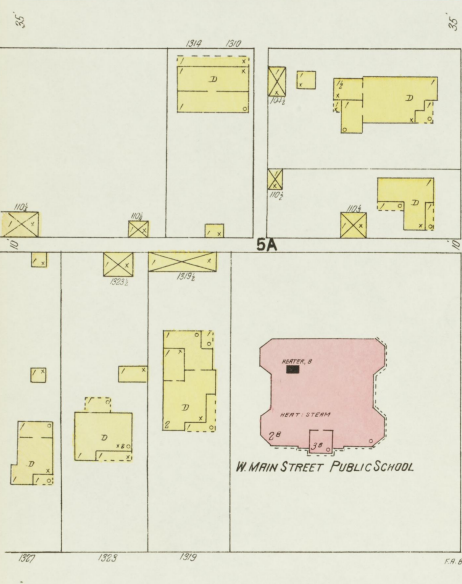
BUILDINGS COLORED YELLOW ARE FRAME
 BLUE
 BRICK
 RED
 BROWN
 GREEN

INDICATE RELATIVE HEIGHTS
 FIRE STATION AS SHOWN ON KEY MAP
 ALTERNATE STREET NUMBERS ARE ACTUAL
 CORRECTIVE STREET NUMBERS ARE ARBITRARY



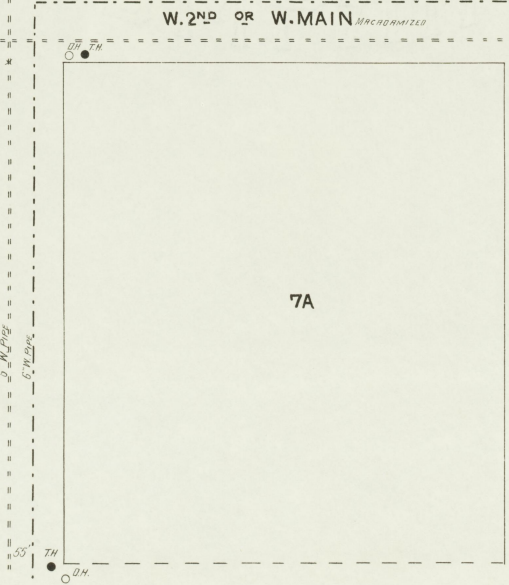
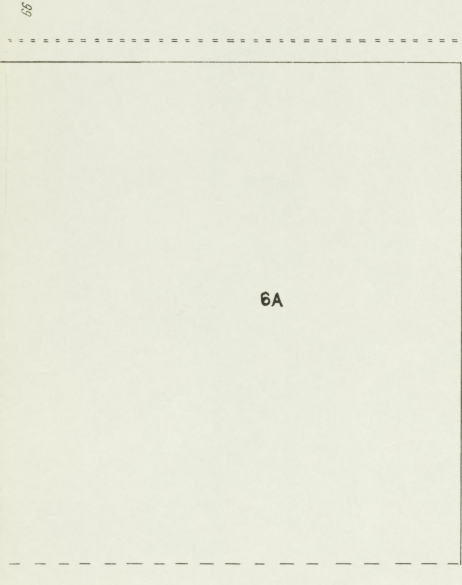


Oct. 1905
LOWENSBORO
 KY.

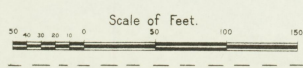


W. MAIN STREET PUBLIC SCHOOL

W. 2ND OR W. MAIN (RECORDIZED)

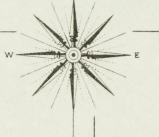
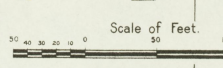
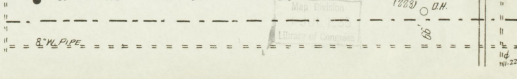
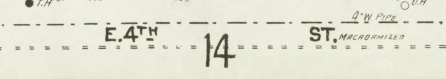
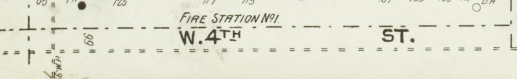
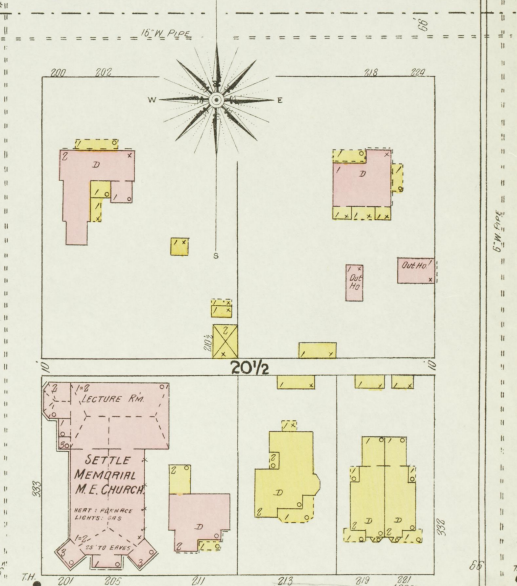
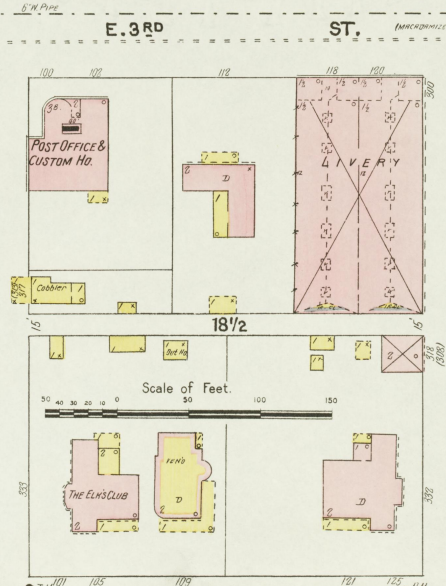
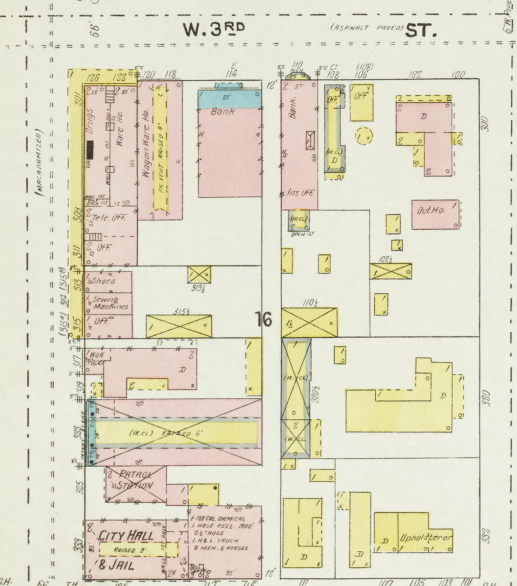
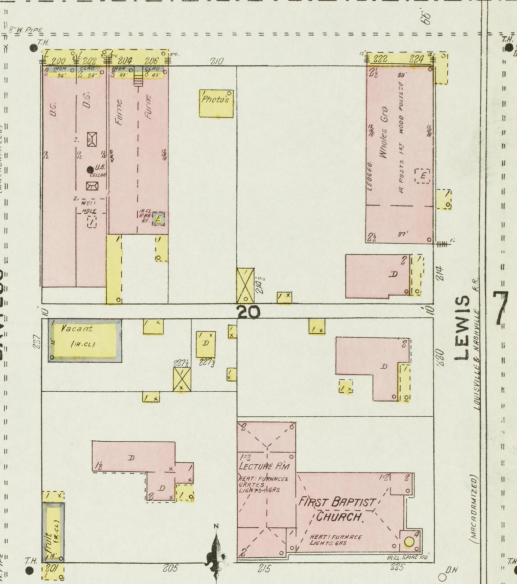
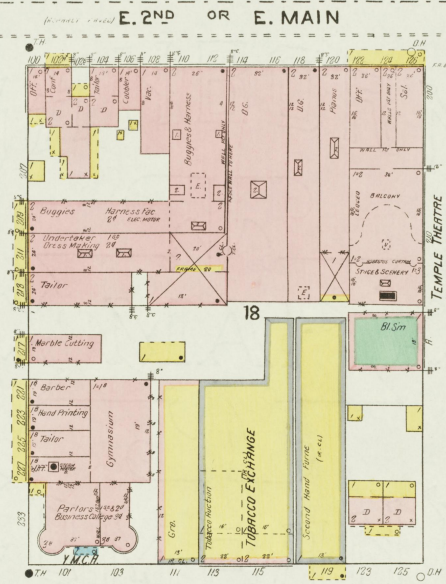
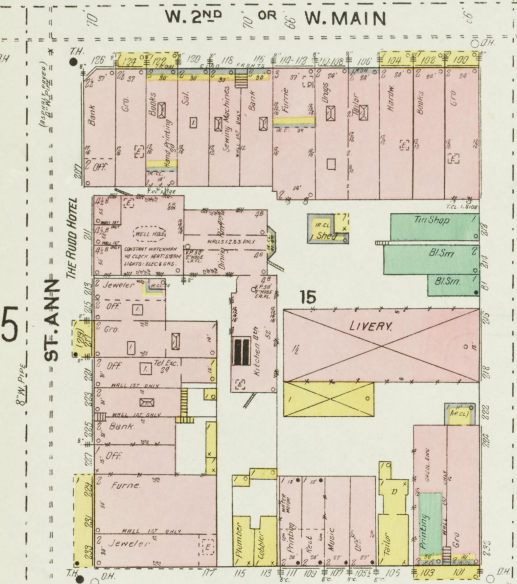
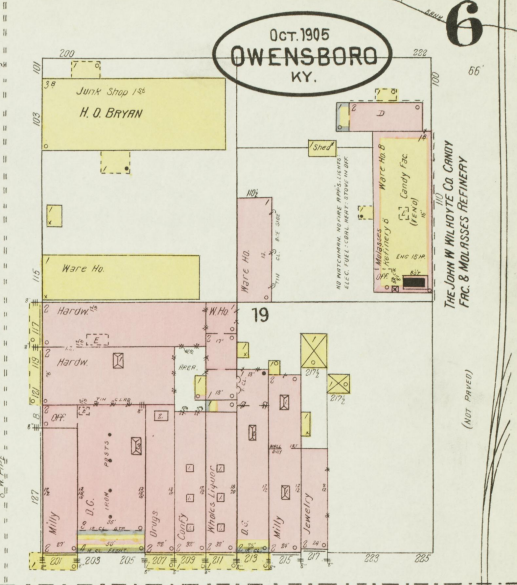
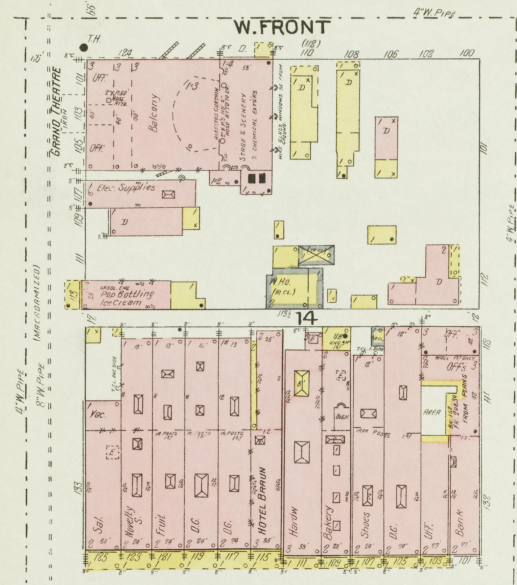


S + S T E R ' S A D D ' N



W. 3RD (NOT OPEN) ST.

OPPOSITE SIDE OF STREET NOT DEFINED. (NOT PAVED)



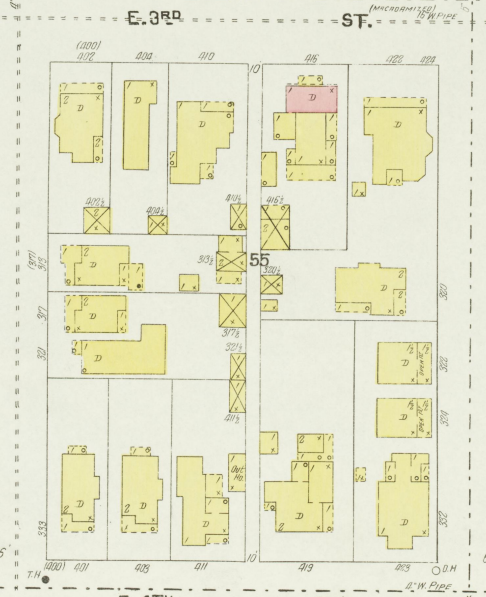
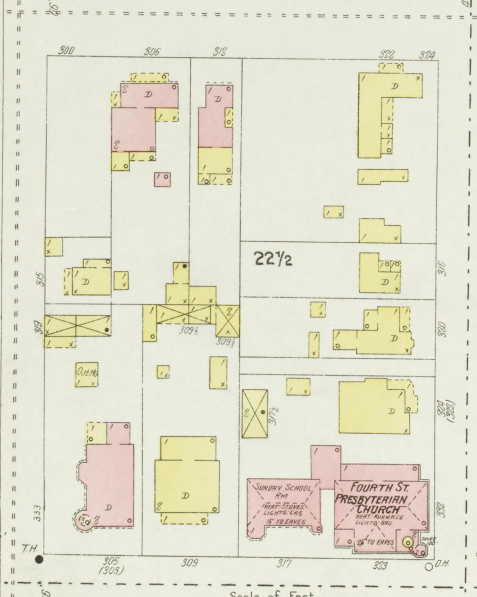
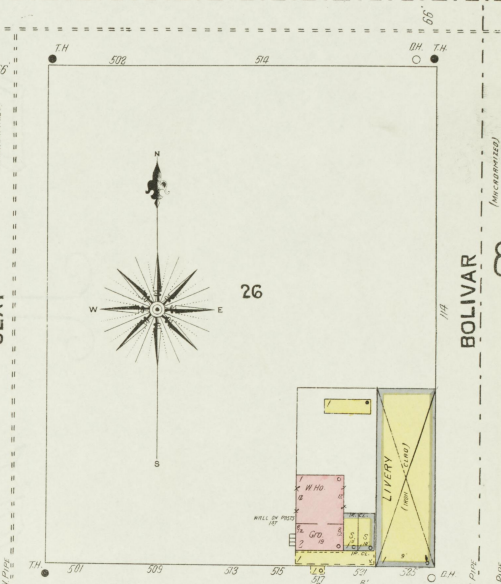
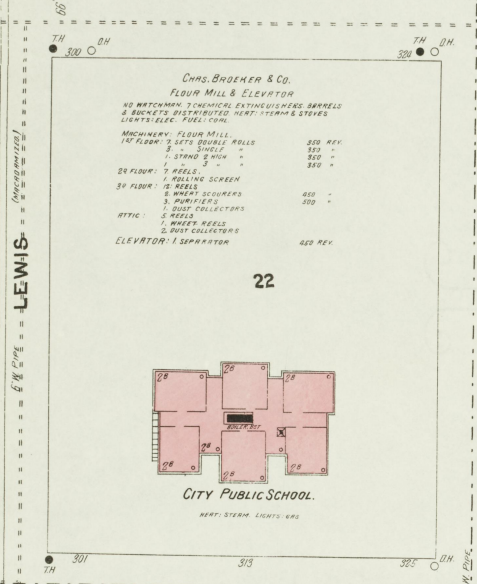
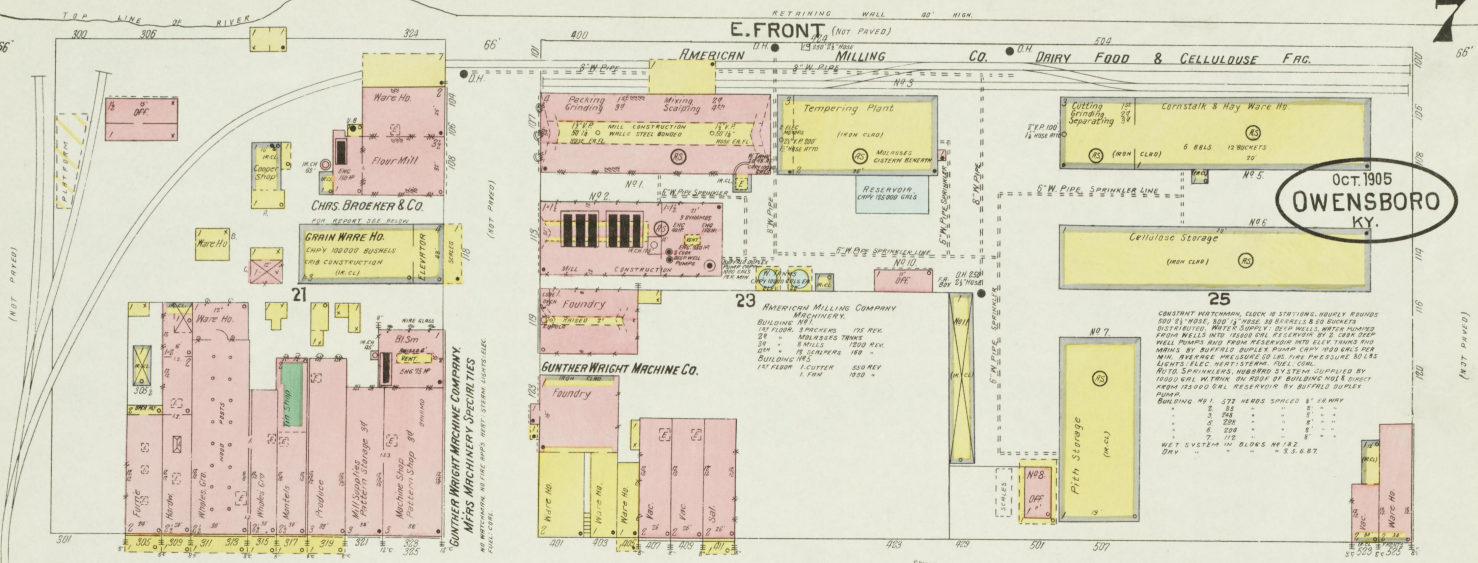
THE LOW W. MILHOYE CO. CANNY
FRG. & MOLLASSES REFINERY

TEMPLE THEATRE
REPRESENTATIVE THEATRE

FIRST BAPTIST CHURCH
FIRST FLOOR LIGHTS ON

SETTLE MEMORIAL M.E. CHURCH
FIRST FLOOR LIGHTS ON

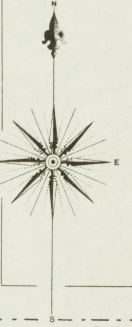
OCT 1905
OWENSBORO
KY.



OHIO RIVER 150' BEYOND

E. FRONT (NOT PAVED)

OCT. 1905
OWENSBORO
KY.



OWENSBORO WATER WORKS CO.
PUMPING STATION

ONE HUNDRED LBS. PORTLAND CEMENT PER DAY & MILLION GALS
PER DAY WATER. ONE OPERATOR WITH COUPY & MILLER
GALS PER 24 HOURS

27

OWENSBORO BOTTLING WORKS

WICK MILLER CONDY CO.

30

LIVERY

Boarding Ho.

Wholesale Drags

Wholesale Drags

Wholesale Drags

Wholesale Drags

Wholesale Drags

Wholesale Drags

Wholesale Drags

Wholesale Drags

Wholesale Drags

Wholesale Drags

Wholesale Drags

Wholesale Drags

Wholesale Drags

Wholesale Drags

Wholesale Drags

Wholesale Drags

Wholesale Drags

Wholesale Drags

Wholesale Drags

Wholesale Drags

Wholesale Drags

Wholesale Drags

Wholesale Drags

Wholesale Drags

Wholesale Drags

Wholesale Drags

Wholesale Drags

Wholesale Drags

Wholesale Drags

Wholesale Drags

Wholesale Drags

Wholesale Drags

Wholesale Drags

Wholesale Drags

Wholesale Drags

Wholesale Drags

Wholesale Drags

Wholesale Drags

Wholesale Drags

Wholesale Drags

Wholesale Drags

Wholesale Drags

Wholesale Drags

Wholesale Drags

Wholesale Drags

Wholesale Drags

Wholesale Drags

Wholesale Drags

Wholesale Drags

Wholesale Drags

BOLIVAR (MACADAMIZED)

TRIPLETT (MACADAMIZED)

PEARL (NOT PAVED)

E. 2ND

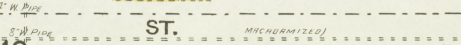
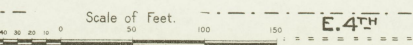
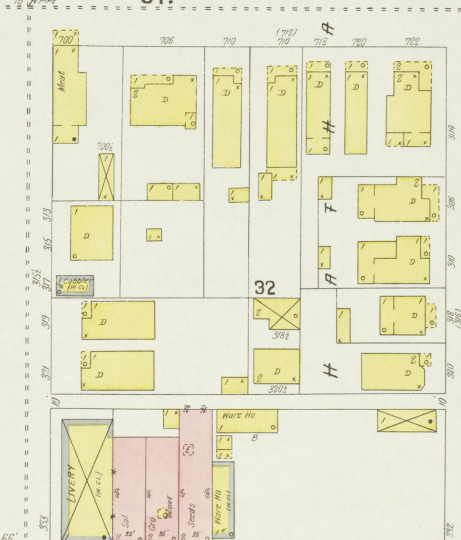
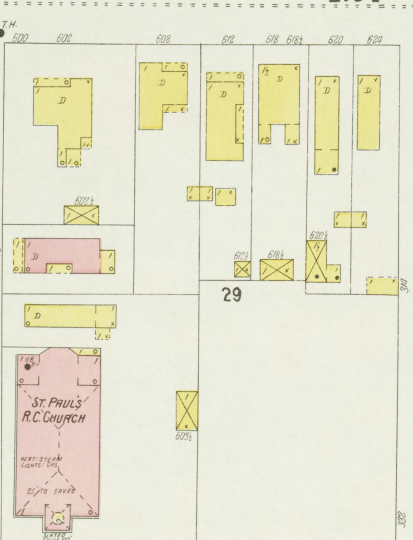
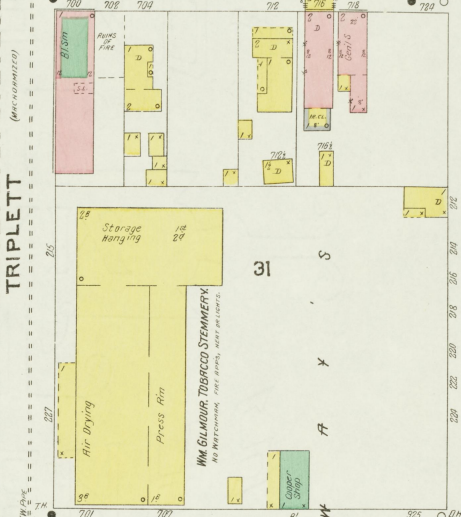
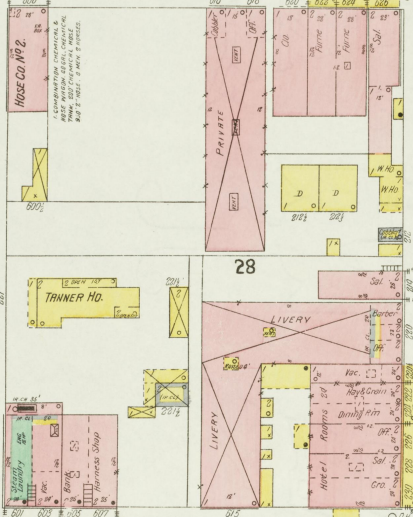
E. MAIN

E. 3RD

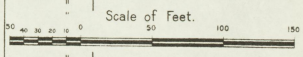
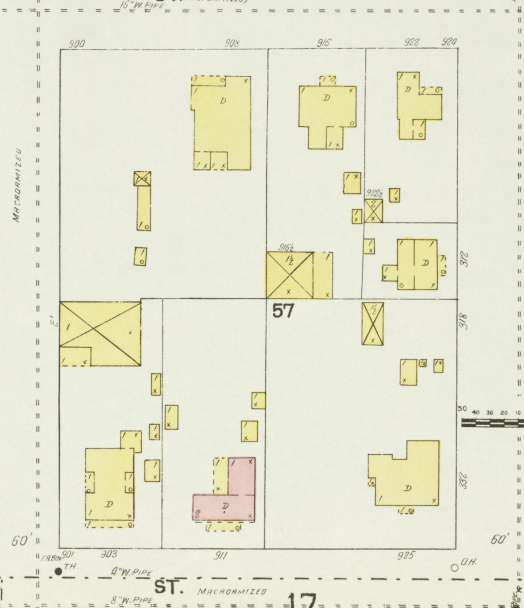
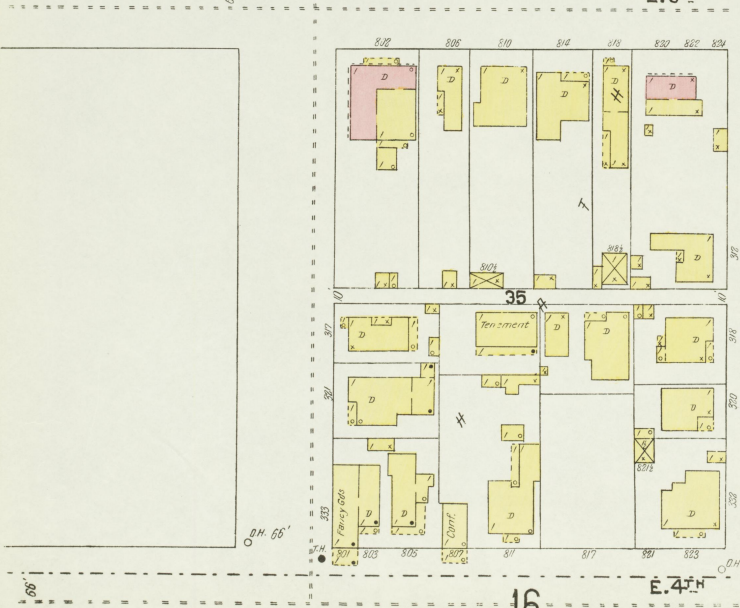
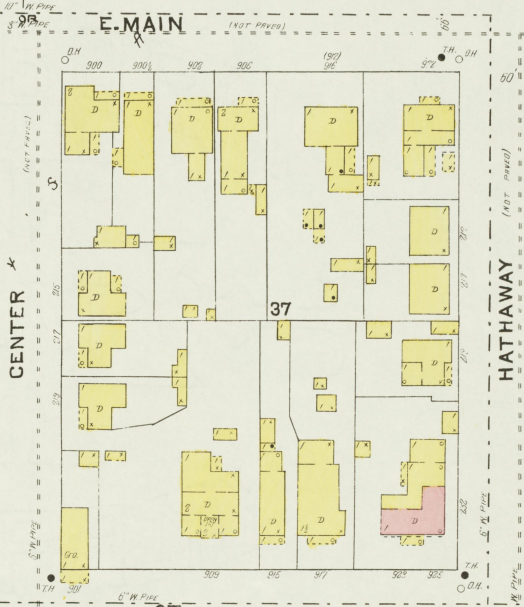
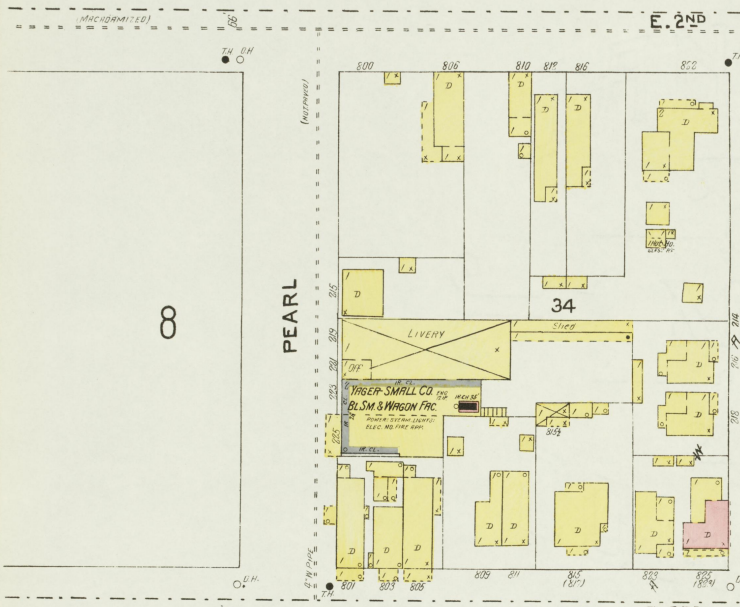
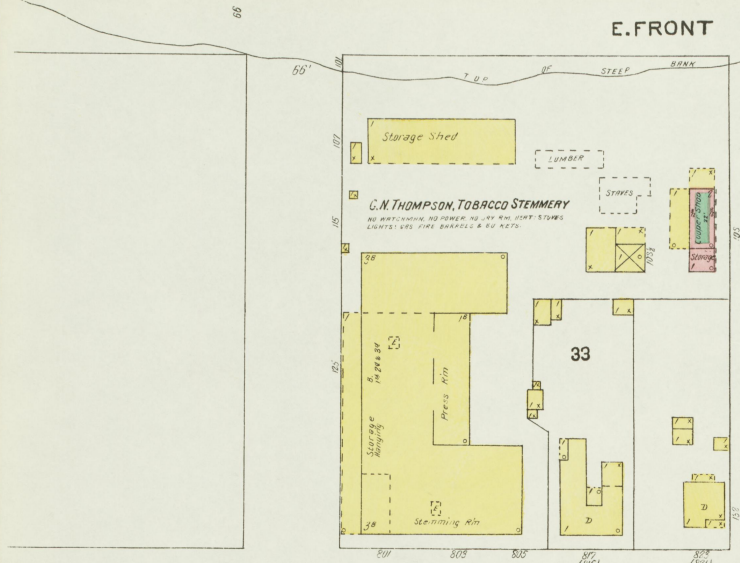
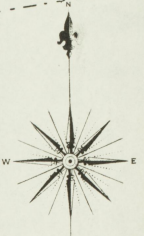
ST.

E. 4TH

ST.

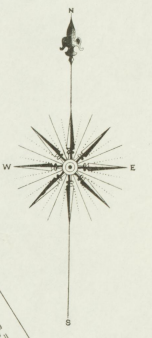


Oct. 1905
OWENSBORO
KY.



Scale of Feet.

OCT. 1905
OWENSBORO
KY.



E. 3RD ST. (MACADAMIZED)

Scale of Feet.

E. 4TH ST.

HATHAWAY

LEITCHFIELD

HAMILTON AV.

SEEL'S

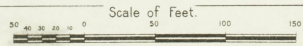
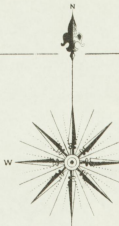
H T C H M P N B

FREIGHT DEPOT

HARDINSBURG ROAD

Bent Wood Ware Ho

OWENSBORO WAREHOUSES
Bent Wood Ware Co. 1005 1007 1009 1011 1013 1015 1017 1019 1021 1023 1025 1027 1029 1031 1033 1035 1037 1039 1041 1043 1045 1047 1049 1051 1053 1055 1057 1059 1061 1063 1065 1067 1069 1071 1073 1075 1077 1079 1081 1083 1085 1087 1089 1091 1093 1095 1097 1099 1101 1103 1105 1107 1109 1111 1113 1115 1117 1119 1121 1123 1125 1127 1129 1131 1133 1135 1137 1139 1141 1143 1145 1147 1149 1151 1153 1155 1157 1159 1161 1163 1165 1167 1169 1171 1173 1175 1177 1179 1181 1183 1185 1187 1189 1191 1193 1195 1197 1199 1201 1203 1205 1207 1209 1211 1213 1215 1217 1219 1221 1223 1225 1227 1229 1231 1233 1235 1237 1239 1241 1243 1245 1247 1249 1251 1253 1255 1257 1259 1261 1263 1265 1267 1269 1271 1273 1275 1277 1279 1281 1283 1285 1287 1289 1291 1293 1295 1297 1299 1301 1303 1305 1307 1309 1311 1313 1315 1317 1319 1321 1323 1325 1327 1329 1331 1333 1335 1337 1339 1341 1343 1345 1347 1349 1351 1353 1355 1357 1359 1361 1363 1365 1367 1369 1371 1373 1375 1377 1379 1381 1383 1385 1387 1389 1391 1393 1395 1397 1399 1401 1403 1405 1407 1409 1411 1413 1415 1417 1419 1421 1423 1425 1427 1429 1431 1433 1435 1437 1439 1441 1443 1445 1447 1449 1451 1453 1455 1457 1459 1461 1463 1465 1467 1469 1471 1473 1475 1477 1479 1481 1483 1485 1487 1489 1491 1493 1495 1497 1499 1501 1503 1505 1507 1509 1511 1513 1515 1517 1519 1521 1523 1525 1527 1529 1531 1533 1535 1537 1539 1541 1543 1545 1547 1549 1551 1553 1555 1557 1559 1561 1563 1565 1567 1569 1571 1573 1575 1577 1579 1581 1583 1585 1587 1589 1591 1593 1595 1597 1599 1601 1603 1605 1607 1609 1611 1613 1615 1617 1619 1621 1623 1625 1627 1629 1631 1633 1635 1637 1639 1641 1643 1645 1647 1649 1651 1653 1655 1657 1659 1661 1663 1665 1667 1669 1671 1673 1675 1677 1679 1681 1683 1685 1687 1689 1691 1693 1695 1697 1699 1701 1703 1705 1707 1709 1711 1713 1715 1717 1719 1721 1723 1725 1727 1729 1731 1733 1735 1737 1739 1741 1743 1745 1747 1749 1751 1753 1755 1757 1759 1761 1763 1765 1767 1769 1771 1773 1775 1777 1779 1781 1783 1785 1787 1789 1791 1793 1795 1797 1799 1801 1803 1805 1807 1809 1811 1813 1815 1817 1819 1821 1823 1825 1827 1829 1831 1833 1835 1837 1839 1841 1843 1845 1847 1849 1851 1853 1855 1857 1859 1861 1863 1865 1867 1869 1871 1873 1875 1877 1879 1881 1883 1885 1887 1889 1891 1893 1895 1897 1899 1901 1903 1905 1907 1909 1911 1913 1915 1917 1919 1921 1923 1925 1927 1929 1931 1933 1935 1937 1939 1941 1943 1945 1947 1949 1951 1953 1955 1957 1959 1961 1963 1965 1967 1969 1971 1973 1975 1977 1979 1981 1983 1985 1987 1989 1991 1993 1995 1997 1999 2001 2003 2005 2007 2009 2011 2013 2015 2017 2019 2021 2023 2025 2027 2029 2031 2033 2035 2037 2039 2041 2043 2045 2047 2049 2051 2053 2055 2057 2059 2061 2063 2065 2067 2069 2071 2073 2075 2077 2079 2081 2083 2085 2087 2089 2091 2093 2095 2097 2099 2101 2103 2105 2107 2109 2111 2113 2115 2117 2119 2121 2123 2125 2127 2129 2131 2133 2135 2137 2139 2141 2143 2145 2147 2149 2151 2153 2155 2157 2159 2161 2163 2165 2167 2169 2171 2173 2175 2177 2179 2181 2183 2185 2187 2189 2191 2193 2195 2197 2199 2201 2203 2205 2207 2209 2211 2213 2215 2217 2219 2221 2223 2225 2227 2229 2231 2233 2235 2237 2239 2241 2243 2245 2247 2249 2251 2253 2255 2257 2259 2261 2263 2265 2267 2269 2271 2273 2275 2277 2279 2281 2283 2285 2287 2289 2291 2293 2295 2297 2299 2301 2303 2305 2307 2309 2311 2313 2315 2317 2319 2321 2323 2325 2327 2329 2331 2333 2335 2337 2339 2341 2343 2345 2347 2349 2351 2353 2355 2357 2359 2361 2363 2365 2367 2369 2371 2373 2375 2377 2379 2381 2383 2385 2387 2389 2391 2393 2395 2397 2399 2401 2403 2405 2407 2409 2411 2413 2415 2417 2419 2421 2423 2425 2427 2429 2431 2433 2435 2437 2439 2441 2443 2445 2447 2449 2451 2453 2455 2457 2459 2461 2463 2465 2467 2469 2471 2473 2475 2477 2479 2481 2483 2485 2487 2489 2491 2493 2495 2497 2499 2501 2503 2505 2507 2509 2511 2513 2515 2517 2519 2521 2523 2525 2527 2529 2531 2533 2535 2537 2539 2541 2543 2545 2547 2549 2551 2553 2555 2557 2559 2561 2563 2565 2567 2569 2571 2573 2575 2577 2579 2581 2583 2585 2587 2589 2591 2593 2595 2597 2599 2601 2603 2605 2607 2609 2611 2613 2615 2617 2619 2621 2623 2625 2627 2629 2631 2633 2635 2637 2639 2641 2643 2645 2647 2649 2651 2653 2655 2657 2659 2661 2663 2665 2667 2669 2671 2673 2675 2677 2679 2681 2683 2685 2687 2689 2691 2693 2695 2697 2699 2701 2703 2705 2707 2709 2711 2713 2715 2717 2719 2721 2723 2725 2727 2729 2731 2733 2735 2737 2739 2741 2743 2745 2747 2749 2751 2753 2755 2757 2759 2761 2763 2765 2767 2769 2771 2773 2775 2777 2779 2781 2783 2785 2787 2789 2791 2793 2795 2797 2799 2801 2803 2805 2807 2809 2811 2813 2815 2817 2819 2821 2823 2825 2827 2829 2831 2833 2835 2837 2839 2841 2843 2845 2847 2849 2851 2853 2855 2857 2859 2861 2863 2865 2867 2869 2871 2873 2875 2877 2879 2881 2883 2885 2887 2889 2891 2893 2895 2897 2899 2901 2903 2905 2907 2909 2911 2913 2915 2917 2919 2921 2923 2925 2927 2929 2931 2933 2935 2937 2939 2941 2943 2945 2947 2949 2951 2953 2955 2957 2959 2961 2963 2965 2967 2969 2971 2973 2975 2977 2979 2981 2983 2985 2987 2989 2991 2993 2995 2997 2999 3001 3003 3005 3007 3009 3011 3013 3015 3017 3019 3021 3023 3025 3027 3029 3031 3033 3035 3037 3039 3041 3043 3045 3047 3049 3051 3053 3055 3057 3059 3061 3063 3065 3067 3069 3071 3073 3075 3077 3079 3081 3083 3085 3087 3089 3091 3093 3095 3097 3099 3101 3103 3105 3107 3109 3111 3113 3115 3117 3119 3121 3123 3125 3127 3129 3131 3133 3135 3137 3139 3141 3143 3145 3147 3149 3151 3153 3155 3157 3159 3161 3163 3165 3167 3169 3171 3173 3175 3177 3179 3181 3183 3185 3187 3189 3191 3193 3195 3197 3199 3201 3203 3205 3207 3209 3211 3213 3215 3217 3219 3221 3223 3225 3227 3229 3231 3233 3235 3237 3239 3241 3243 3245 3247 3249 3251 3253 3255 3257 3259 3261 3263 3265 3267 3269 3271 3273 3275 3277 3279 3281 3283 3285 3287 3289 3291 3293 3295 3297 3299 3301 3303 3305 3307 3309 3311 3313 3315 3317 3319 3321 3323 3325 3327 3329 3331 3333 3335 3337 3339 3341 3343 3345 3347 3349 3351 3353 3355 3357 3359 3361 3363 3365 3367 3369 3371 3373 3375 3377 3379 3381 3383 3385 3387 3389 3391 3393 3395 3397 3399 3401 3403 3405 3407 3409 3411 3413 3415 3417 3419 3421 3423 3425 3427 3429 3431 3433 3435 3437 3439 3441 3443 3445 3447 3449 3451 3453 3455 3457 3459 3461 3463 3465 3467 3469 3471 3473 3475 3477 3479 3481 3483 3485 3487 3489 3491 3493 3495 3497 3499 3501 3503 3505 3507 3509 3511 3513 3515 3517 3519 3521 3523 3525 3527 3529 3531 3533 3535 3537 3539 3541 3543 3545 3547 3549 3551 3553 3555 3557 3559 3561 3563 3565 3567 3569 3571 3573 3575 3577 3579 3581 3583 3585 3587 3589 3591 3593 3595 3597 3599 3601 3603 3605 3607 3609 3611 3613 3615 3617 3619 3621 3623 3625 3627 3629 3631 3633 3635 3637 3639 3641 3643 3645 3647 3649 3651 3653 3655 3657 3659 3661 3663 3665 3667 3669 3671 3673 3675 3677 3679 3681 3683 3685 3687 3689 3691 3693 3695 3697 3699 3701 3703 3705 3707 3709 3711 3713 3715 3717 3719 3721 3723 3725 3727 3729 3731 3733 3735 3737 3739 3741 3743 3745 3747 3749 3751 3753 3755 3757 3759 3761 3763 3765 3767 3769 3771 3773 3775 3777 3779 3781 3783 3785 3787 3789 3791 3793 3795 3797 3799 3801 3803 3805 3807 3809 3811 3813 3815 3817 3819 3821 3823 3825 3827 3829 3831 3833 3835 3837 3839 3841 3843 3845 3847 3849 3851 3853 3855 3857 3859 3861 3863 3865 3867 3869 3871 3873 3875 3877 3879 3881 3883 3885 3887 3889 3891 3893 3895 3897 3899 3901 3903 3905 3907 3909 3911 3913 3915 3917 3919 3921 3923 3925 3927 3929 3931 3933 3935 3937 3939 3941 3943 3945 3947 3949 3951 3953 3955 3957 3959 3961 3963 3965 3967 3969 3971 3973 3975 3977 3979 3981 3983 3985 3987 3989 3991 3993 3995 3997 3999 4001 4003 4005 4007 4009 4011 4013 4015 4017 4019 4021 4023 4025 4027 4029 4031 4033 4035 4037 4039 4041 4043 4045 4047 4049 4051 4053 4055 4057 4059 4061 4063 4065 4067 4069 4071 4073 4075 4077 4079 4081 4083 4085 4087 4089 4091 4093 4095 4097 4099 4101 4103 4105 4107 4109 4111 4113 4115 4117 4119 4121 4123 4125 4127 4129 4131 4133 4135 4137 4139 4141 4143 4145 4147 4149 4151 4153 4155 4157 4159 4161 4163 4165 4167 4169 4171 4173 4175 4177 4179 4181 4183 4185 4187 4189 4191 4193 4195 4197 4199 4201 4203 4205 4207 4209 4211 4213 4215 4217 4219 4221 4223 4225 4227 4229 4231 4233 4235 4237 4239 4241 4243 4245 4247 4249 4251 4253 4255 4257 4259 4261 4263 4265 4267 4269 4271 4273 4275 4277 4279 4281 4283 4285 4287 4289 4291 4293 4295 4297 4299 4301 4303 4305 4307 4309 4311 4313 4315 4317 4319 4321 4323 4325 4327 4329 4331 4333 4335 4337 4339 4341 4343 4345 4347 4349 4351 4353 4355 4357 4359 4361 4363 4365 4367 4369 4371 4373 4375 4377 4379 4381 4383 4385 4387 4389 4391 4393 4395 4397 4399 4401 4403 4405 4407 4409 4411 4413 4415 4417 4419 4421 4423 4425 4427 4429 4431 4433 4435 4437 4439 4441 4443 4445 4447 4449 4451 4453 4455 4457 4459 4461 4463 4465 4467 4469 4471 4473 4475 4477 4479 4481 4483 4485 4487 4489 4491 4493 4495 4497 4499 4501 4503 4505 4507 4509 4511 4513 4515 4517 4519 4521 4523 4525 4527 4529 4531 4533 4535 4537 4539 4541 4543 4545 4547 4549 4551 4553 4555 4557 4559 4561 4563 4565 4567 4569 4571 4573 4575 4577 4579 4581 4583 4585 4587 4589 4591 4593 4595 4597 4599 4601 4603 4605 4607 4609 4611 4613 4615 4617 4619 4621 4623 4625 4627 4629 4631 4633 4635 4637 4639 4641 4643 4645 4647 4649 4651 4653 4655 4657 4659 4661 4663 4665 4667 4669 4671 4673 4675 4677 4679 4681 4683 4685 4687 4689 4691 4693 4695 4697 4699 4701 4703 4705 4707 4709 4711 4713 4715 4717 4719 4721 4723 4725 4727 4729 4731 4733 4735 4737 4739 4741 4743 4745 4747 4749 4751 4753 4755 4757 4759 4761 4763 4765 4767 4769 4771 4773 4775 4777 4779 4781 4783 4785 4787 4789 4791 4793 4795 4797 4799 4801 4803 4805 4807 4809 4811 4813 4815 4817 4819 4821 4823 4825 4827 4829 4831 4833 4835 4837 4839 4841 4843 4845 4847 4849 4851 4853 4855 4857 4859 4861 4863 4865 4867 4869 4871 4873 4875 4877 4879 4881 4883 4885 4887 4889 4891 4893 4895 4897 4899 4901 4903 4905 4907 4909 4911 4913 4915 4917 4919 4921 4923 4925 4927 4929 4931 4933 4935 4937 4939 4941 4943 4945 4947 4949 4951 4953 4955 4957 4959 4961 4963 4965 4967 4969 4971 4973 4975 4977 4979 4981 4983 4985 4987 4989 4991 4993 4995 4997 4999 5001 5003 5005 5007 5009 5011 5013 5015 5017 5019 5021 5023 5025 5027 5029 5031 5033 5035 5037 5039 5041 5043 5045 5047 5049 5051 5053 5055 5057 5059 5061 5063 5065 5067 5069 5071 5073 5075 5077 5079 5081 5083 5085 5087 5089 5091 5093 5095 5097 5099 5101 5103 5105 5107 5109 5111 5113 5115 5117 5119 5121 5123 5125 5127 5129 5131 5133 5135 5137 5139 5141 5143 5145 5147 5149 5151 5153 5155 5157 5159 5161 5163 5165 5167 5169 5171 5173 5175 5177 5179 5181 5183 5185 5187 5189 5191 5193 5195 5197 5199 5201 5203 5205 5207 5209 5211 5213 5215 5217 5219 5221 5223 5225 5227 5229 5231 5233 5235 5237 5239 5241 5243 5245 5247 5249 5251 5253 5255 5257 5259 5261 5263 5265 5267 5269 5271 5273 5275 5277 5279 5281 5283 5285 5287 5289 5291 5293 5295 5297 5299 5301 5303 5305 5307 5309 5311 5313 5315 5317 5319 5321 5323 5325 5327 5329 5331 5333 5335 5337 5339 5341 5343 5345 5347 5349 5351 5353 5355 5357 5359 5361 5363 5365 5367 5369 5371 5373 5375 5377 5379 5381 5383 5385 5387 5389 5391 5393 5395 5397 5399 5401 5403 5405 5407 5409 5411 5413 5415 5417 5419 5421 5423 5425 5427 5429 5431 5433 5435 5437 5439 5441 5443 5445 5447 5449 5451 5453 5455 5457 5459 5461 5463 5465 5467 5469 5471 5473 5475 5477 5479 5481 5483 5485 5487 5489 5491 5493 5495 5497 5499 5501 5503 5505 5507 5509 5511 5513 5515 5517 5519 5521 5523 5525 5527 5529 5531 5533 5535 5537 5539 5541 5543 5545 5547 5549 5551 5553 5555 5557 5559 5561 5563 5565 5567 5569 5571 5573 5575 5577 5579 5581 5583 5585 5587 5589 5591 5593 5595 5597 5599 5601 5603 5605 5607 5609 5611 5613 5615 5617 561



OCT. 1905
OWENSBORO
KY.

12

W. 4TH ST.

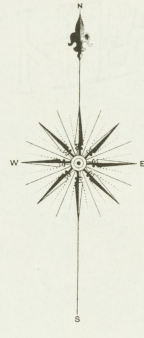
W. 5TH ST.

W. 7TH OR W. HARRIET ST.

WALNUT

MULBERRY

LOCUST



WALNUT STREET PUBLIC SCHOOL
HERY. STERN, NO. LIGHTS.

WALNUT ST. BAPTIST CHURCH
HERY. STERN, LIGHTS. ELEC.

Scale of Feet.
0 50 100 150

20

21

21

9
(208)

7
(208)

10
(207)

7

5

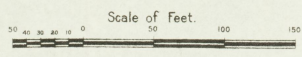
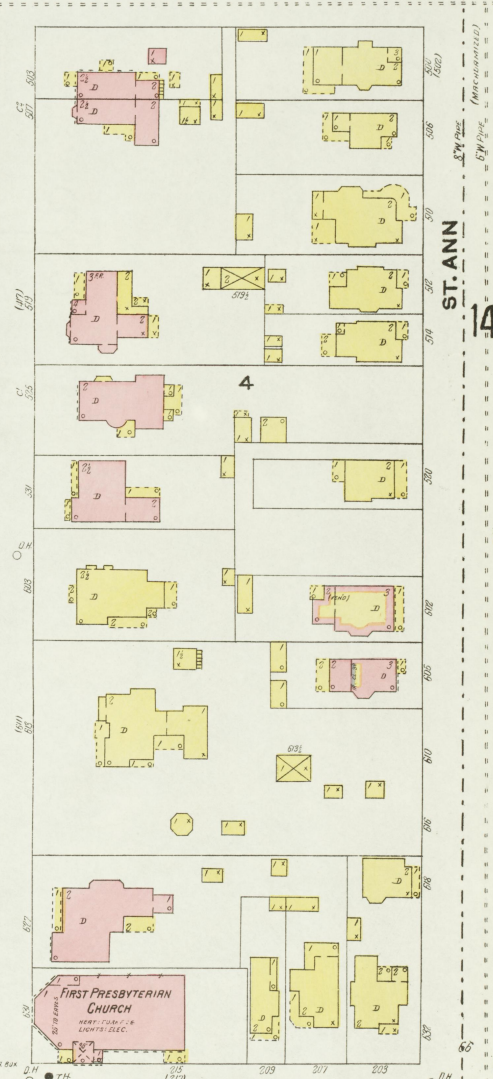
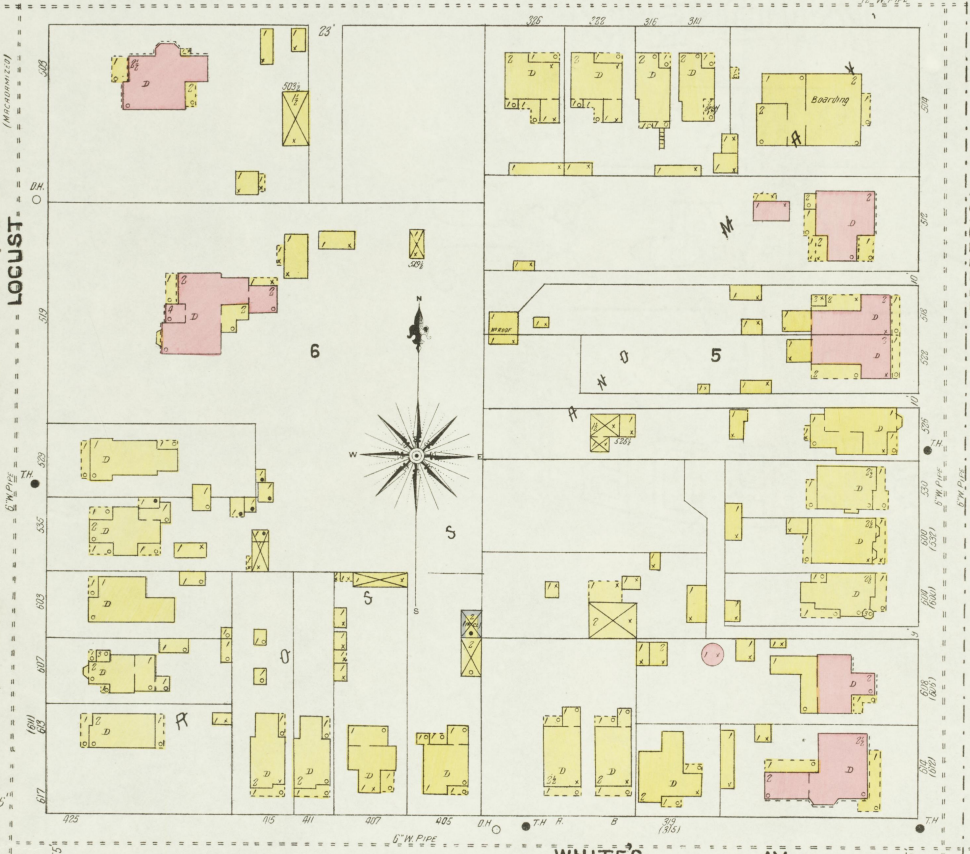
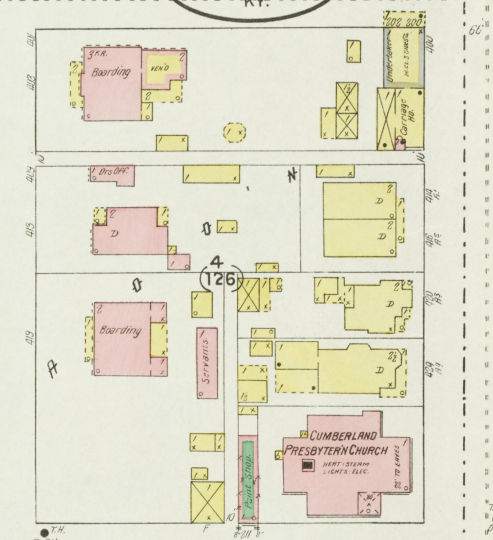
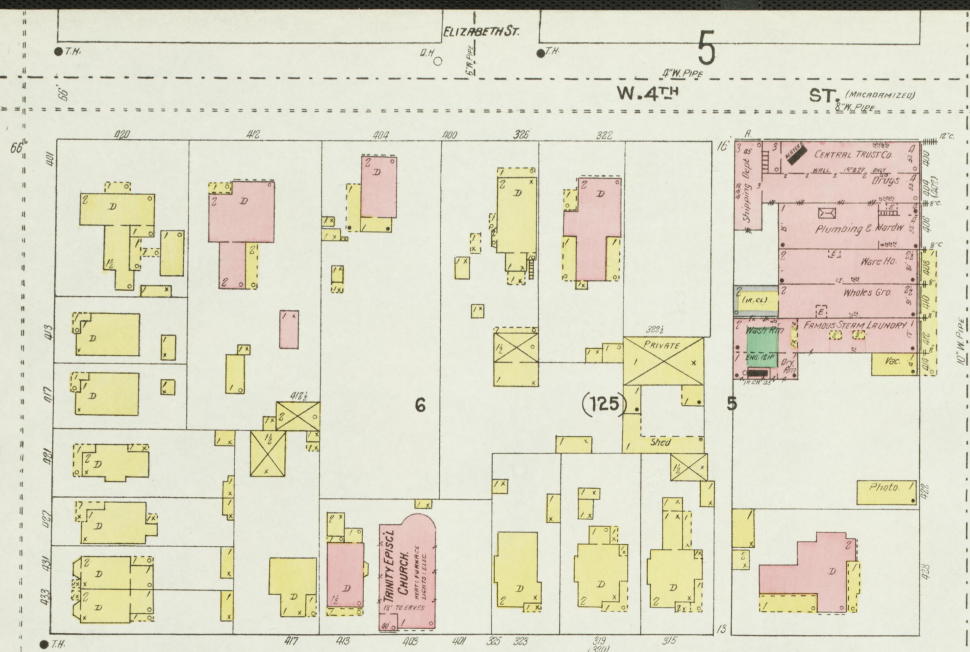
4

11

13

20

21



21

22

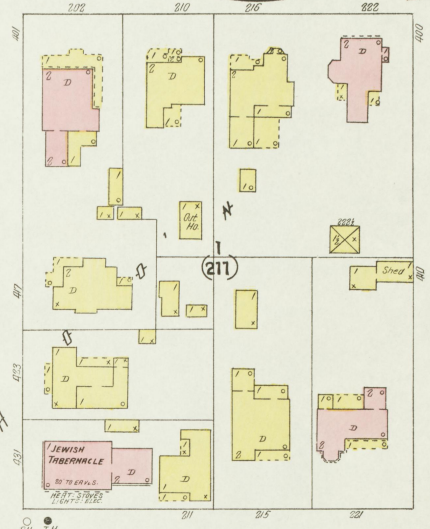
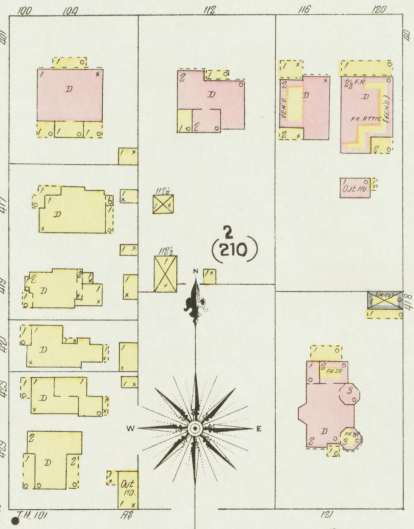
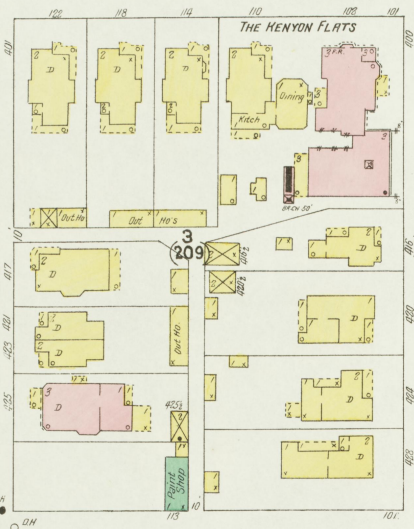
OCT. 1905
OWENSBORO
KY.

14

W. 4TH ST.

E. 4TH ST. (MACADAMIZED)

6

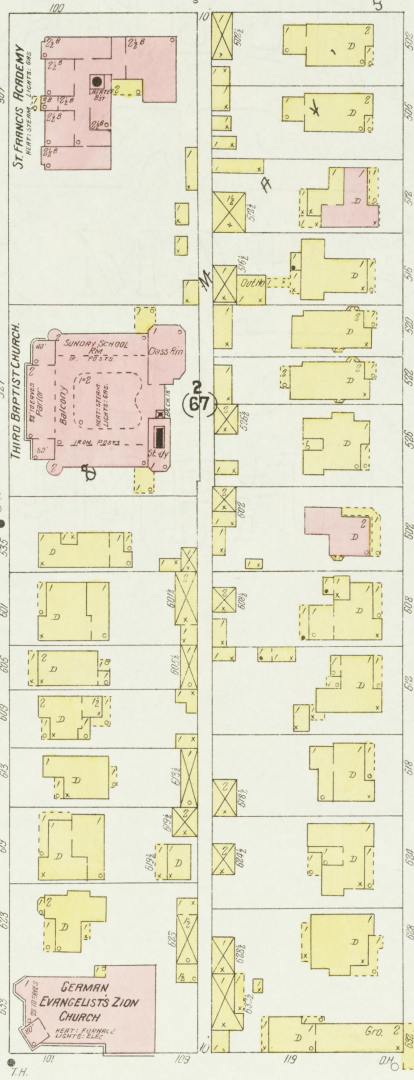
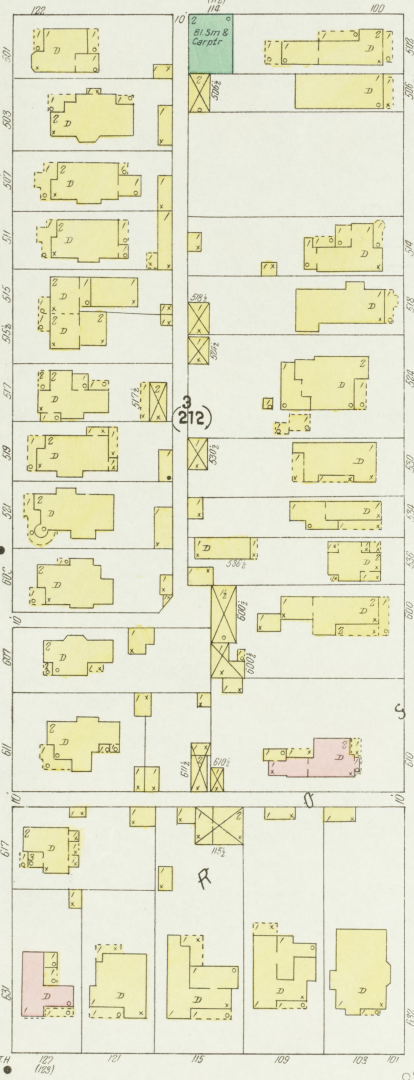


W. 5TH ST.

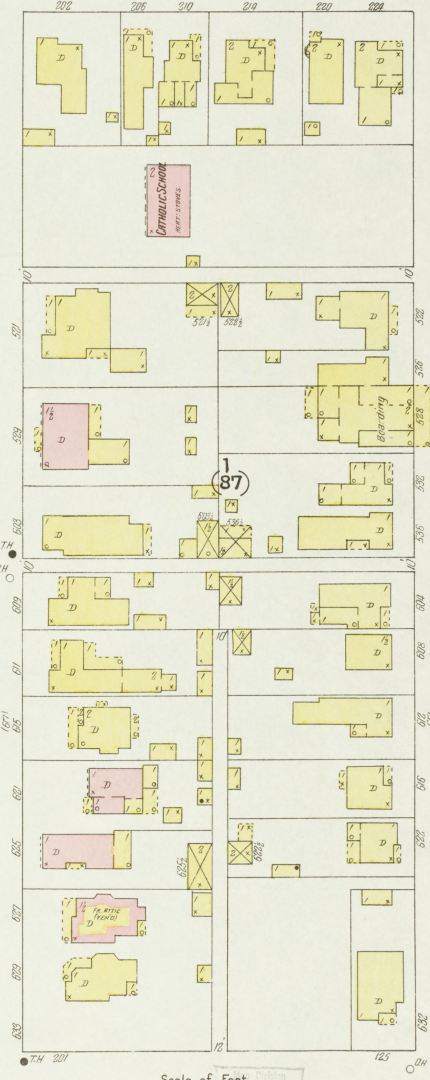
E. 5TH ST. (MACADAMIZED)

13

ALLEN



DAVIES



15

W. 7TH OR W. HARRIETT

E. 7TH OR E. HARRIETT

22

Scale of Feet.

23

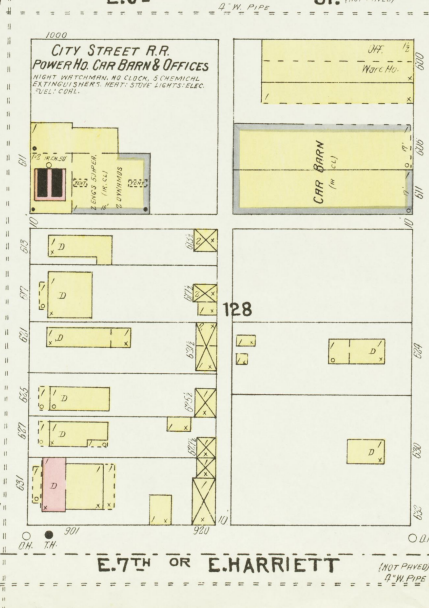
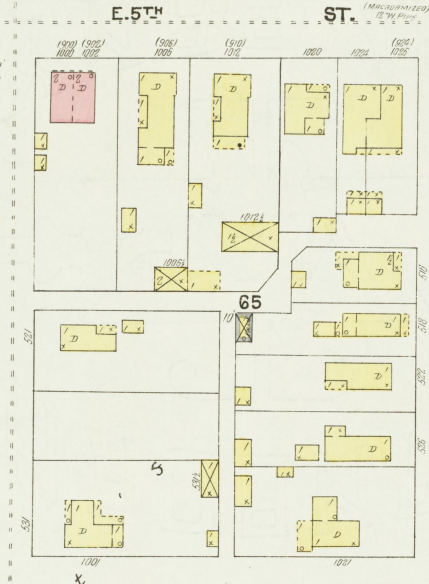
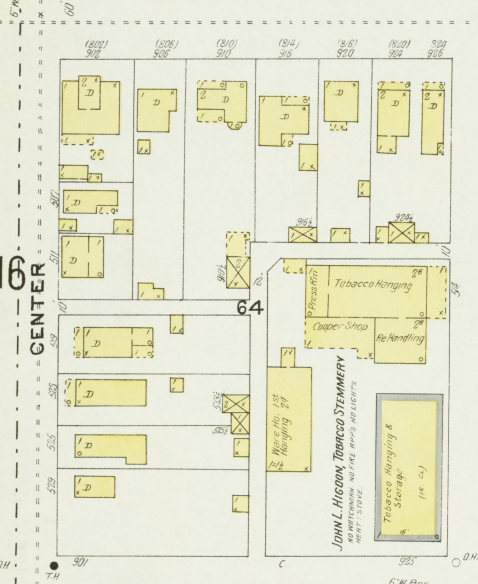
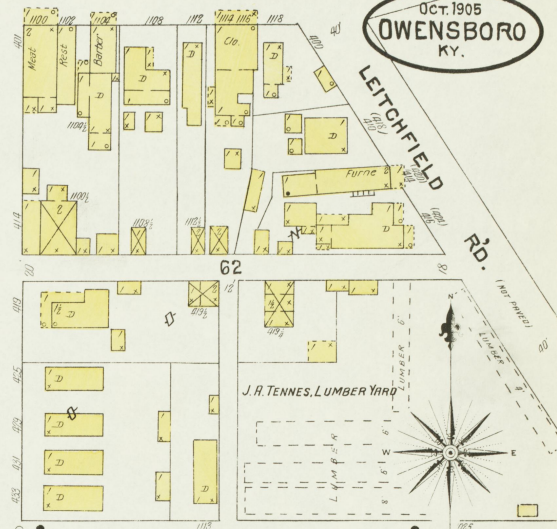
9

10

OCT. 1905
OWENSBORO
KY.

LEITCHFIELD
RD.

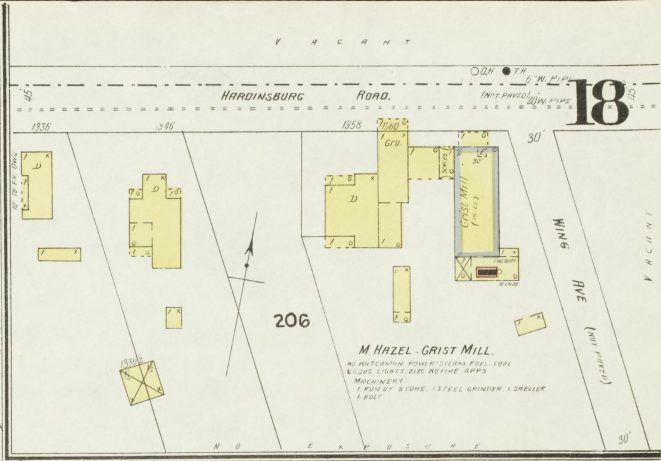
E. 4TH ST. (MICHIGAN 124)



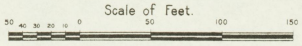
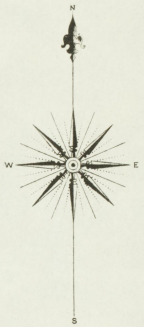
25

26

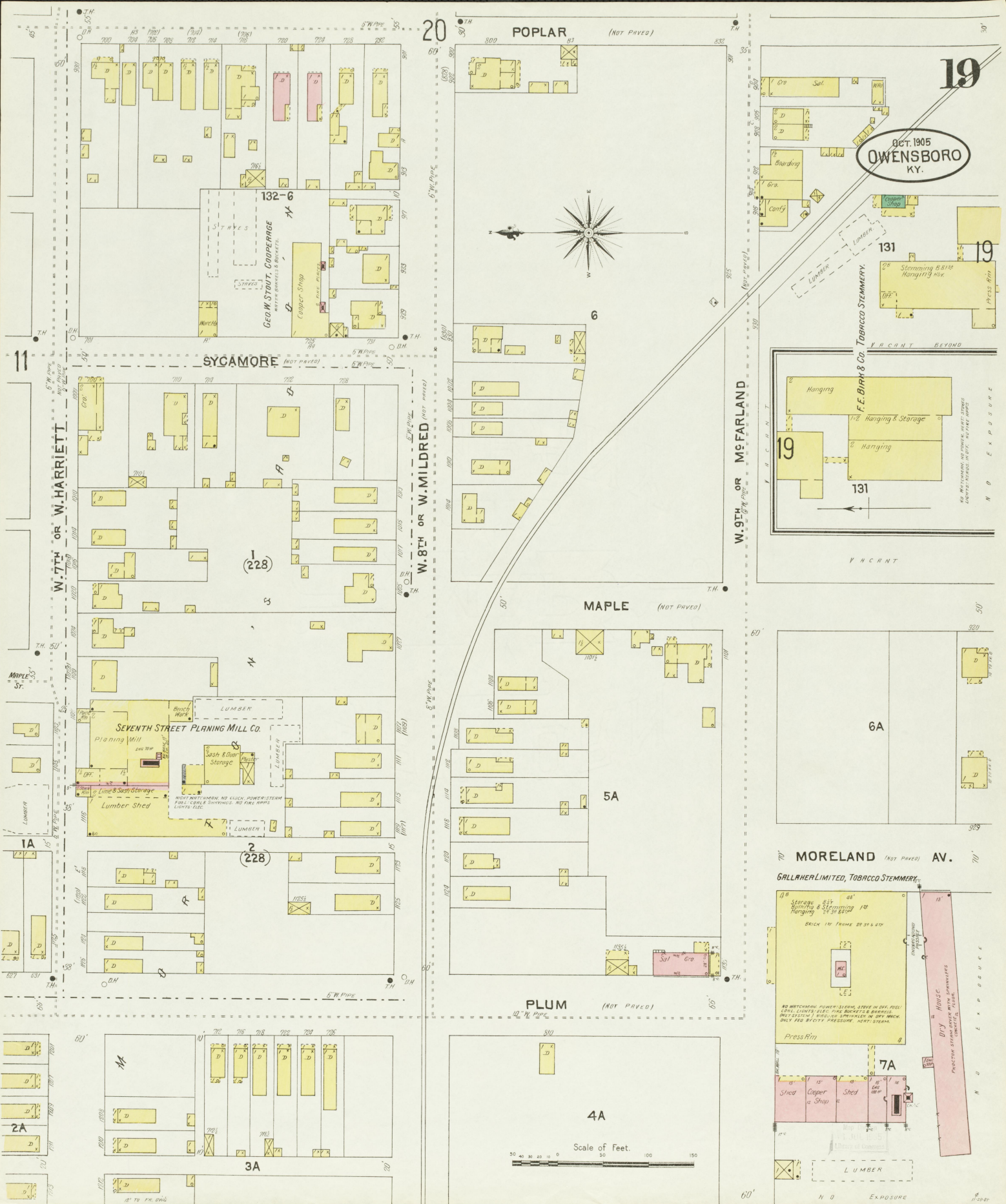
E. 7TH OR E. HARRIETT



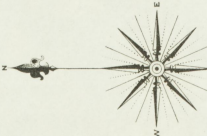
OCT. 1905
OWENSBORO
 KY



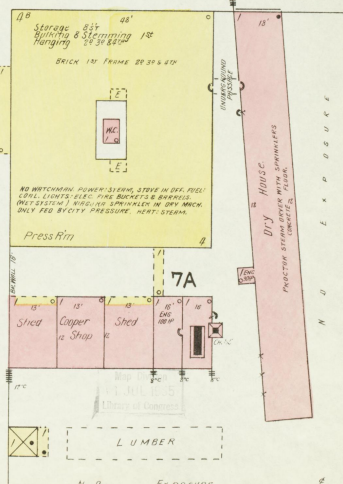
Map Printed
 1-1911, 1925
 1 Sheet of Progress



OCT. 1905
OWENSBORO
KY.



Scale of Feet.
0 50 100 150



70' MORELAND (NOT PAVED) AV. 70'
GALLNER LIMITED, TOBACCO STEMMERY.

11 B Storage 65' 45' 45'
Planing & Steaming 130'
Hanging 125' 30' 45'

NO WATCHMAN, NO FIRE, STEEL IN DOOR, DOOR, LIGHTS, ELEC. FIRE BASKETS & BARRIERS. PROTECTIVE INSULATION SPRINKLER IN SHOP. MACH. ONLY FED BY CITY PRESSURE. ADMT. STEAM.

Press Room

Shed Cooper Shop

7A

LUMBER

N O EXPOSURE

12-20-07

OCT. 1905
OWENSBORO
KY

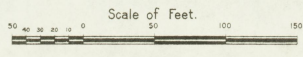
20

W. 7TH OR W. HARRIETT

W. 8TH OR W. MILDRED

W. 9TH OR W. MCFARLAND

W. 10TH (NOT PAVED) ST.



28

12

21

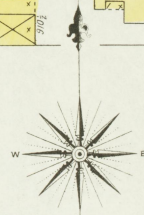
29

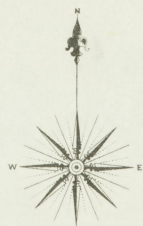
11

19

WALNUT

MULBERRY





WHITES AV.

W. 7TH OR W. HARRIETT

MULBERRY

LOCUST

FREDERICA

GROVE AV.

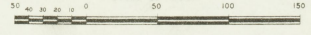
DRIVEWAY

Imperial Tobacco Co. of Kentucky
TOBACCO STEMMEY.
Ware Ho. (Cigarette Shop)
Stemming B.
Press Rm.
Hanging 131 268 39
Bulking B.
Ware Ho. LUMBER

NO SWITCHES, NO POWER, LIGHTS, AND
HEAT STOPS. FIRE BARRIERS & BURNERS
DISTRIBUTED.

W. 9TH OR W. McFARLAND

Scale of Feet.



Map drawn
1905

13

W. 7TH OR W. HARRIETT

14

E. 7TH OR E. HARRIETT

22

Oct. 1905
OWENSBORO
KY.

92-2

91-1

W. 8TH OR ANTHONY

93-2

W. 9TH OR W. McFARLAND

E. 9TH OR E. McFARLAND

FREDERICA

ALLEN

OWENSBORO WHEEL CO. MFGS. WAGON & BUGGY WHEELS

23

94

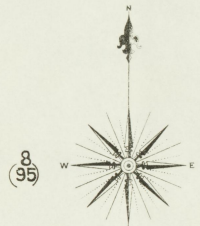
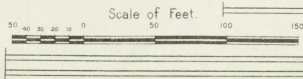
AMERICAN TOBACCO CO.
FINZER BRANCH.

OWENSBORO SAND LIME BRICK CO

W. VIRGINIA

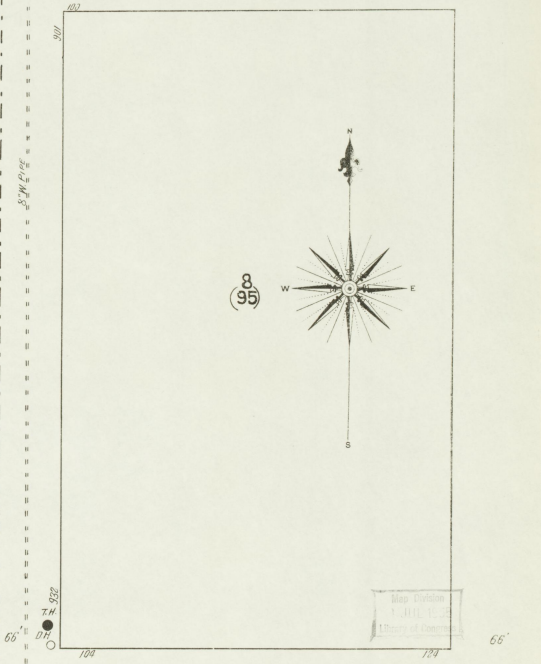
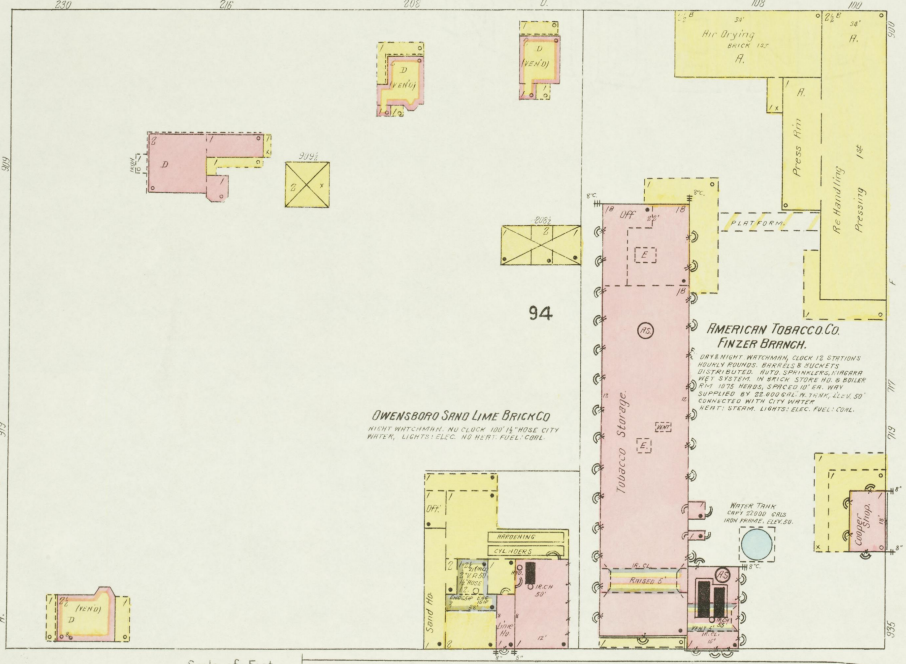
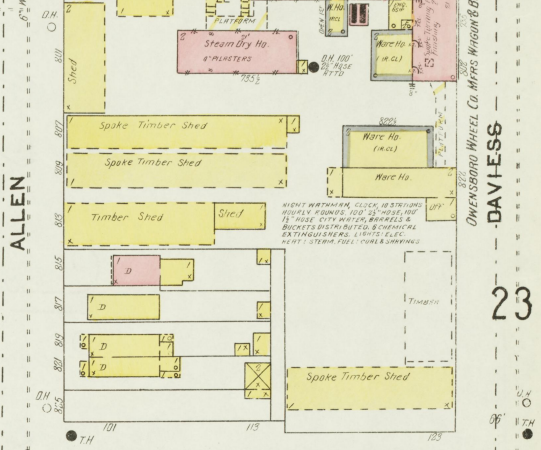
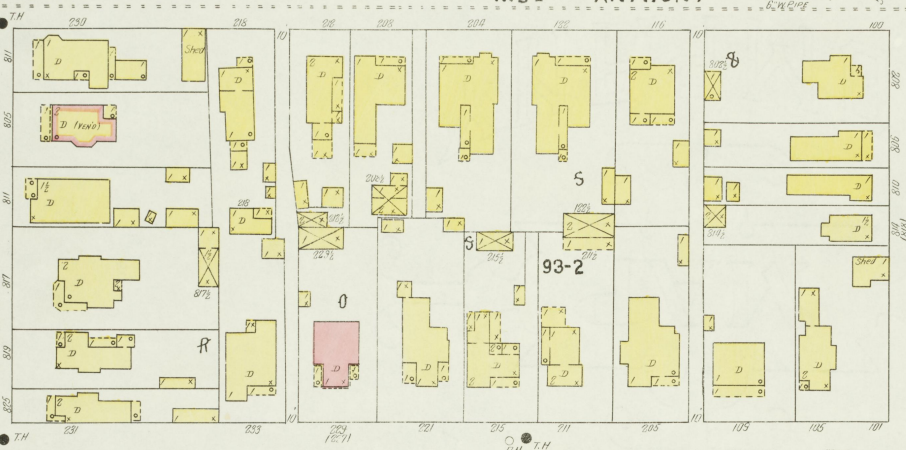
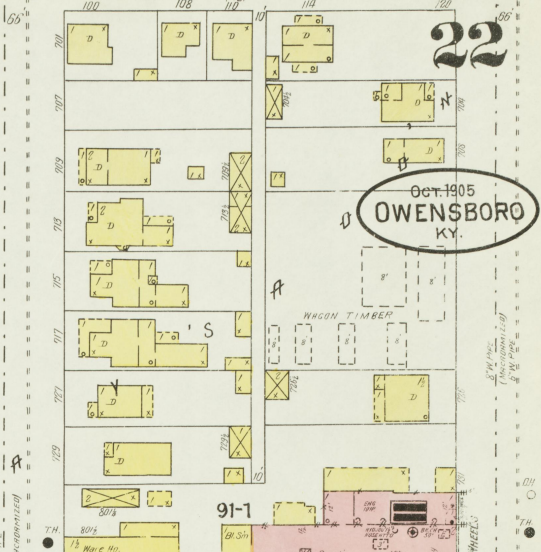
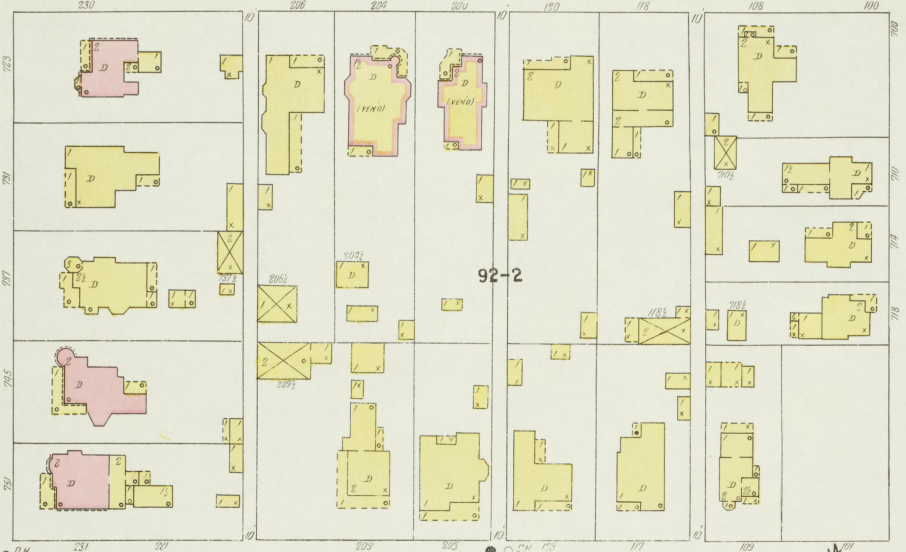
E. VIRGINIA

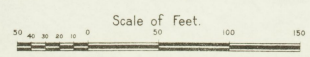
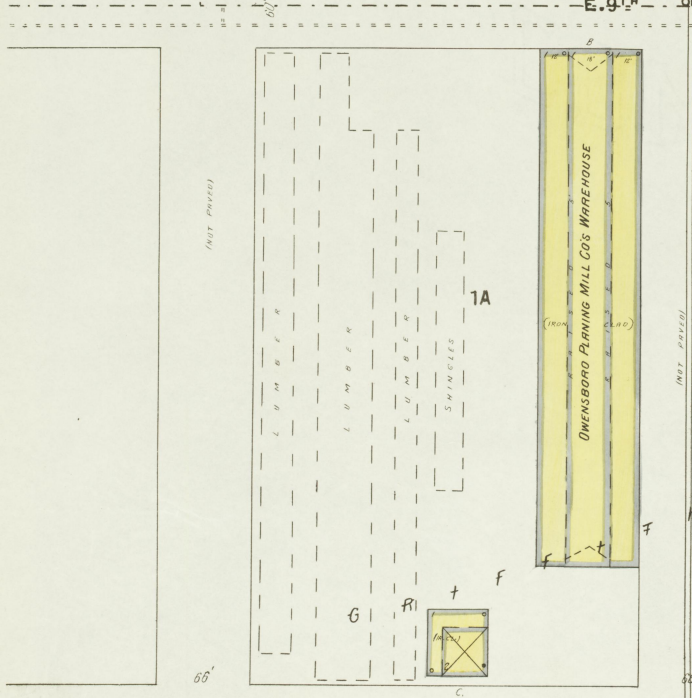
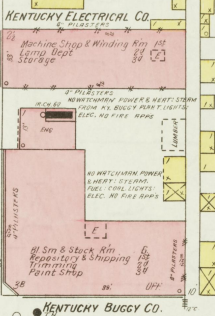
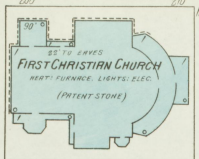
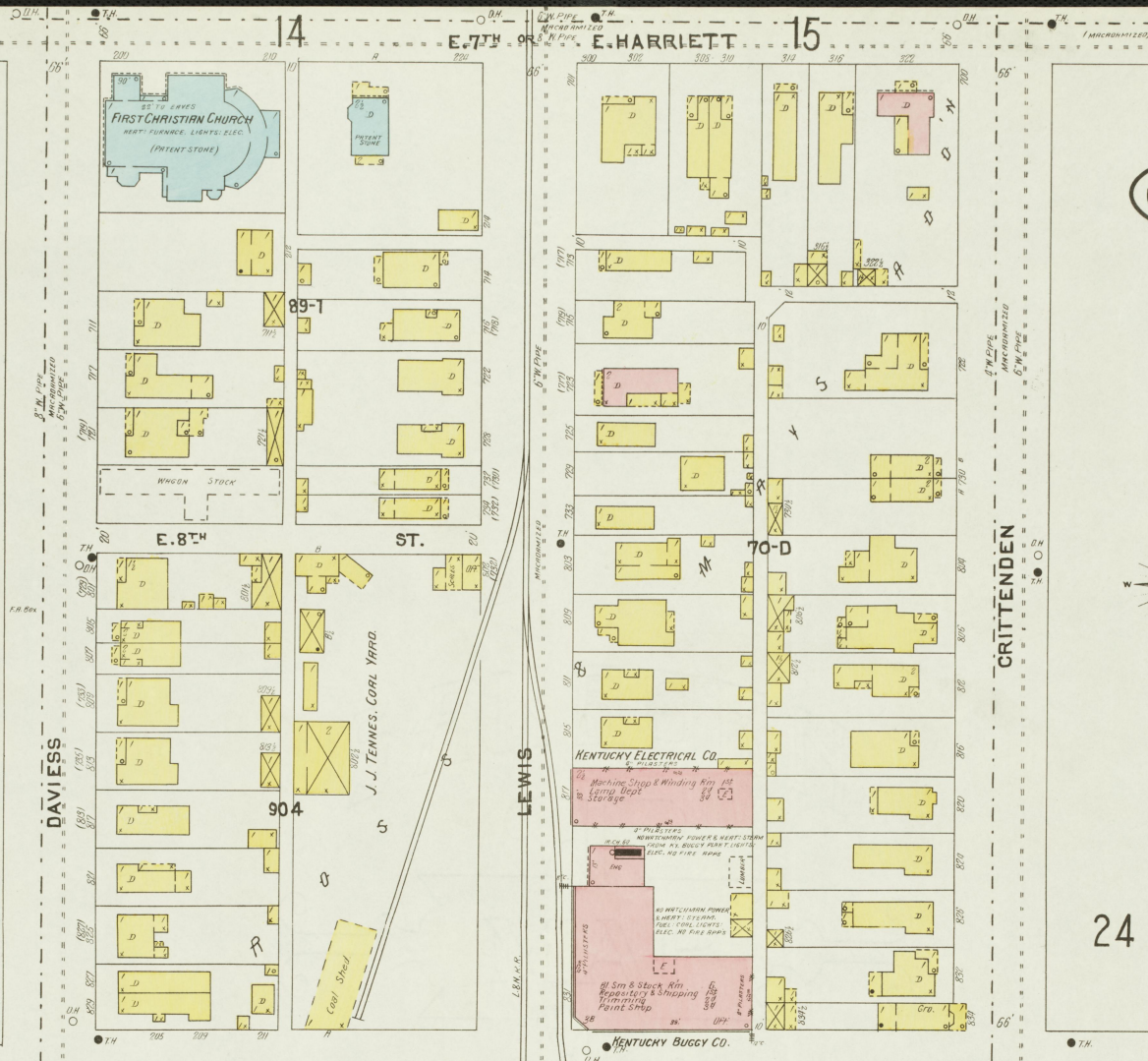
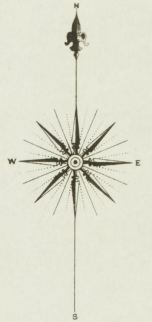
30



Scale of Feet
0 50 100 150

SPLITCH LOUISVILLE, HENDERSON & ST. LOUIS R.R. (NOT PAVED)

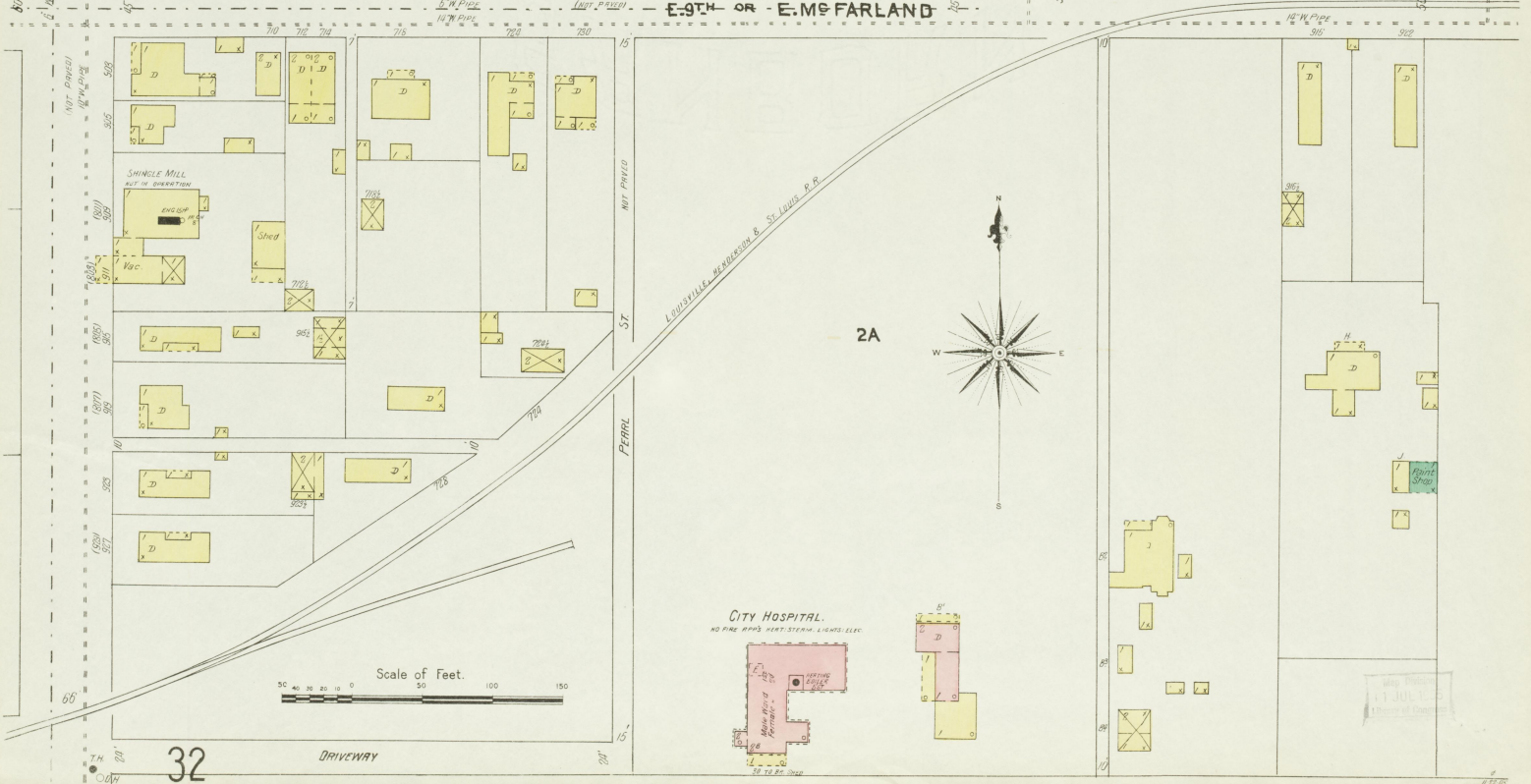
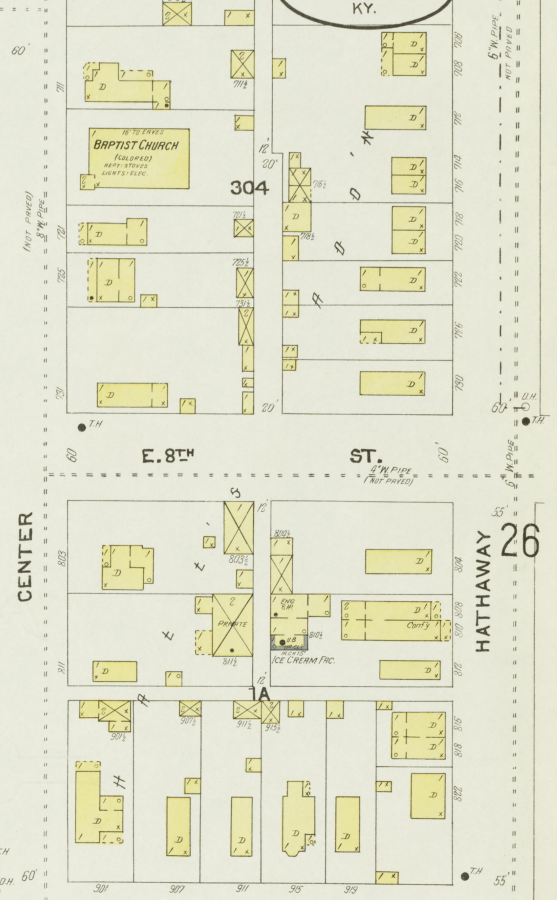
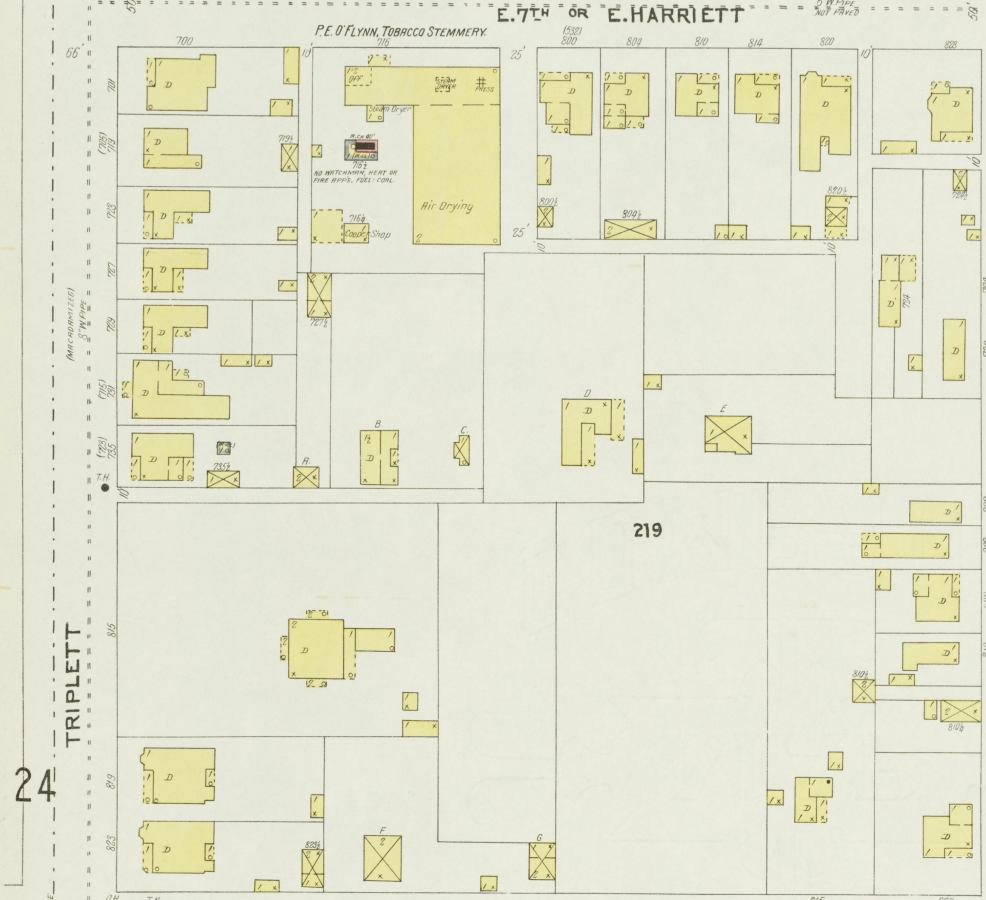


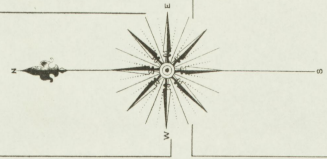


OWENSBORO PLANING MILL CO.
HIGH WATER-TANKING ROOMS
POWER BELT SYSTEM LIGHTS ELEC.
FUEL OIL TO CHEMICAL STORE
WATER MAINS & BACK TO DISTRI
DRAINING COVERED TO FLOOR BY
BLUESH TRUSS METAL PIPE

Map of Owensboro
11 JUL 1905
Library of Congress

16
E. 7TH OR E. HARRIETT
E. 7TH OR E. HARRIETT
17
E. 7TH OR E. HARRIETT
25
OCT. 1905
OWENSBORO
KY.





JACKSON

HALL

HALL

BRECKENRIDGE

BRECKENRIDGE

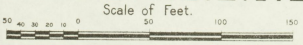
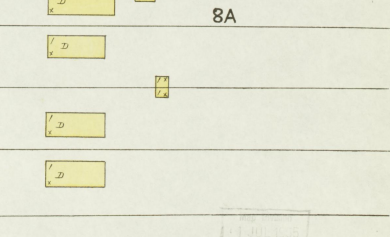
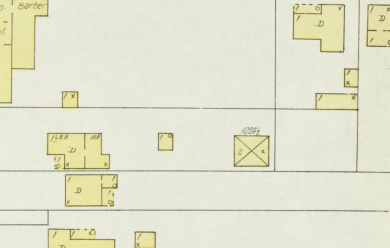
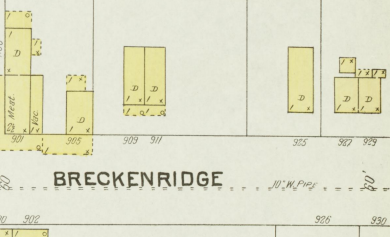
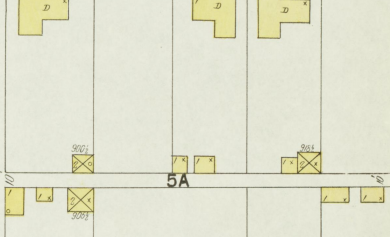
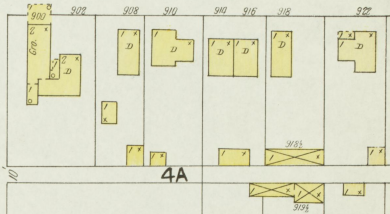
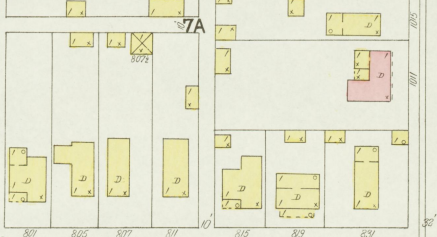
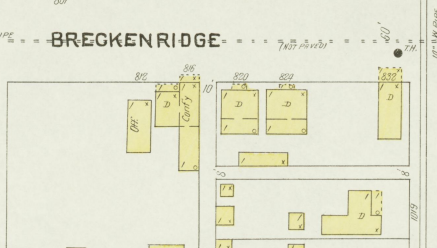
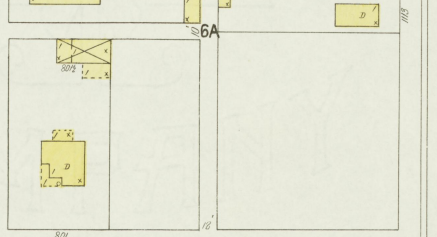
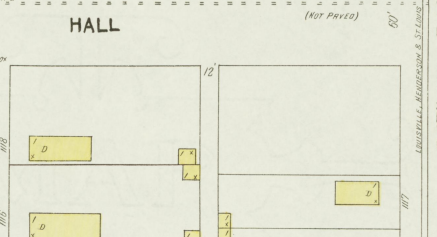
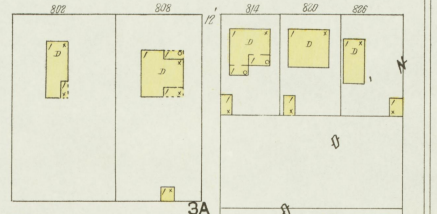
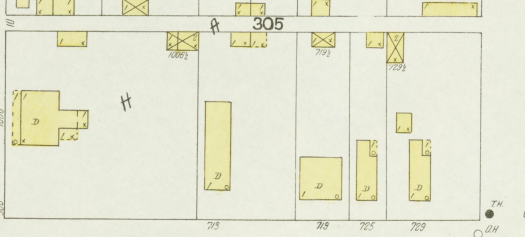
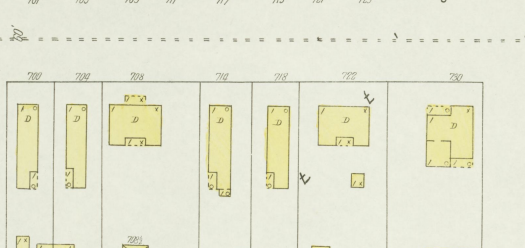
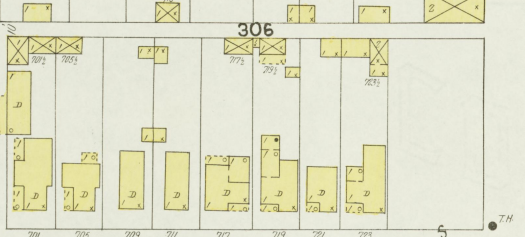
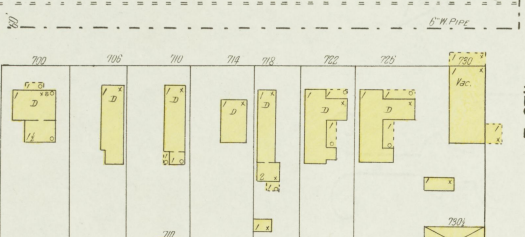
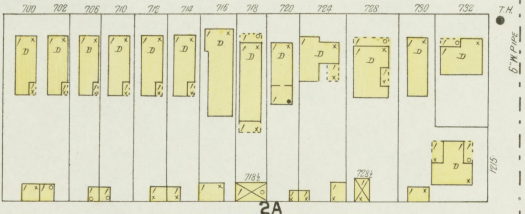
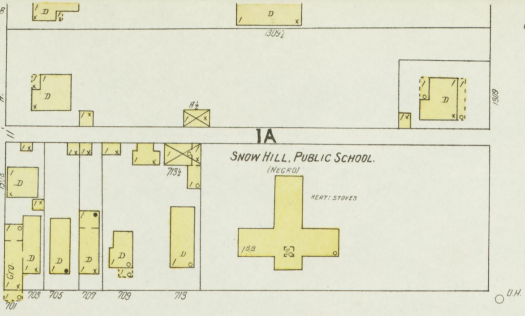
HATHAWAY

E. HARRIETT

E. 7TH

E. 8TH

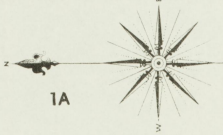
E. 9TH - OR - E. MCFARLAND



36

27

Oct. 1905
OWENSBORO
KY.



LOG YARD.

LASHBROOK BROS.
HARDWOOD LUMBER & SAW MILL

WENT WATCHMAN, POWER, SWAMP, FUEL WASTE
CITY WATER, 100 F. WISE

1A

2A

3A

4A

ELSMERE

AV.

E. 10TH ST.

E. 11TH ST.

ST.

E. 8TH ST.

E. 9TH ST. or E. McFARLAND

223

224

5A

OGLESBY

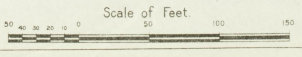
AV.

225

26

26

JACKSON



6-22-05

20

W. 10TH ST. (NOT PAVED)

28

133

OCT. 1905
OWENSBORO
KY.

MULBERRY (NOT PAVED)

W. 11TH OR LITTLES AV. (NOT PAVED)

29

ELM

WALNUT

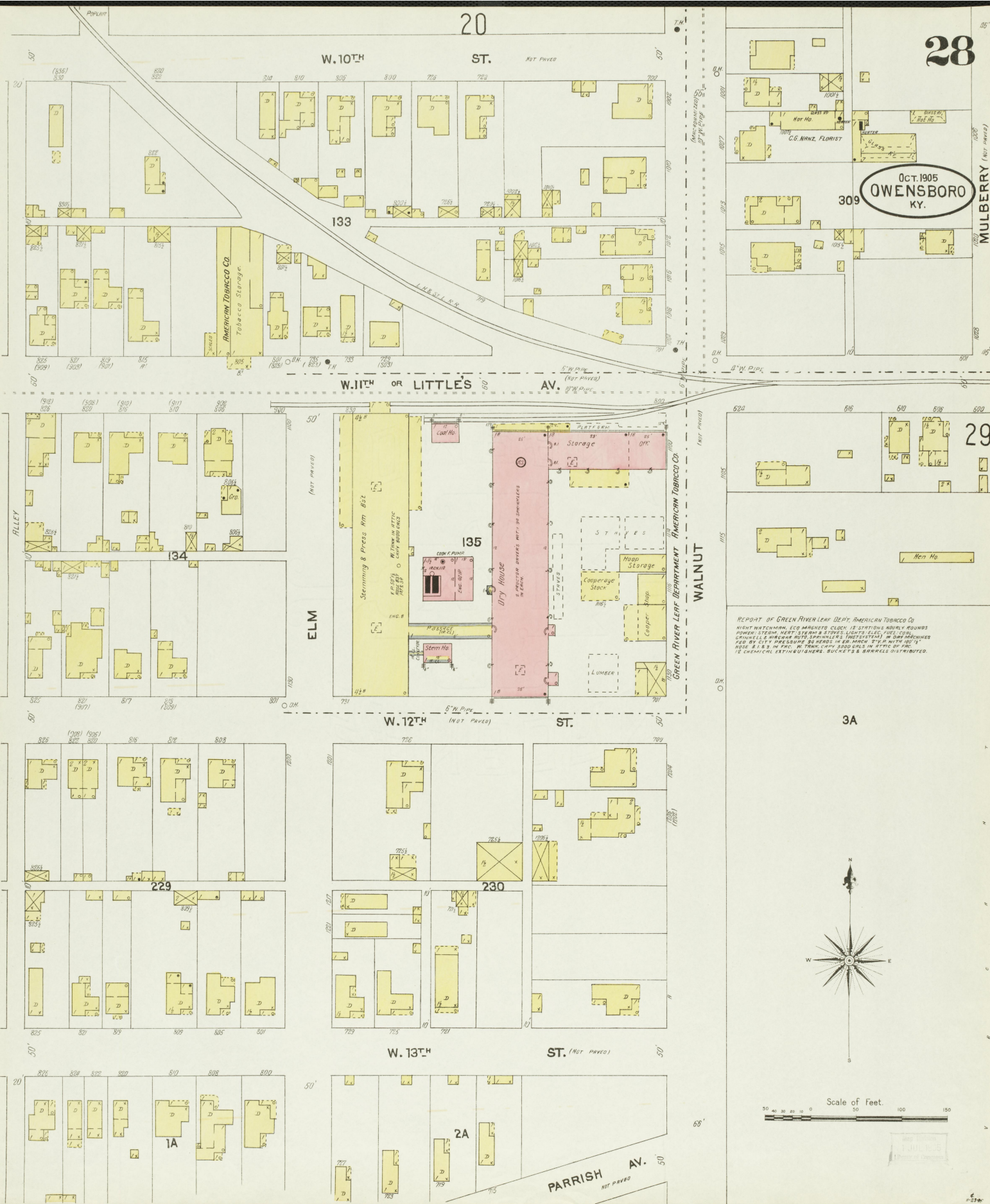
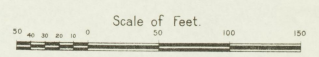
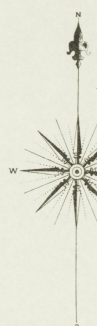
W. 12TH ST. (NOT PAVED)

3A

W. 13TH ST. (NOT PAVED)

PARRISH AV. (NOT PAVED)

REPORT OF GREEN RIVER LEAF DEPT. AMERICAN TOBACCO CO.
W. 11TH ST. BLDG. 120 S. GREEN RIVER, KY. 120 S. GREEN RIVER, KY.
POWER STEAM, HEAT, STEAM & STEEL LIGHTS, ELEC. PULVERIZERS,
CHILLERS, BURNERS, AUTO SPRINKLERS, (INDUSTRIAL) & SAFETY VALVES
FOR BY CITY RESUME 30 REELS IN 80 MARCH '11. WITH 100'S
AND 2 1/2'S IN 1905. IN TRUCK COPY 1000 CIGARS IN 1905. OF 100'S
& 1/2'S CHEMICAL EXTINGUISHERS, BUCKETS & BARRIERS DISTRIBUTED.



21

29

W. 9TH OR W. McFARLAND

20

22

OCT. 1905
OWENSBORO
KY.

OWENSBORO HIGH SCHOOL

MULBERRY

LOCUST

FREDERICA CT.

W. VIRGINIA

FREDERICA

J. HUNTER BELL, TOBACCO STEMMING

310

129

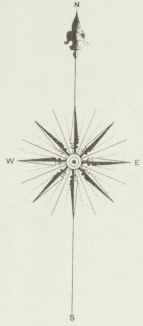
ST. FRANCIS HOTEL

W. 11TH OR LITTLES AV.

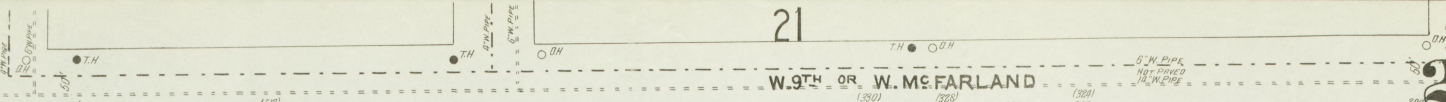
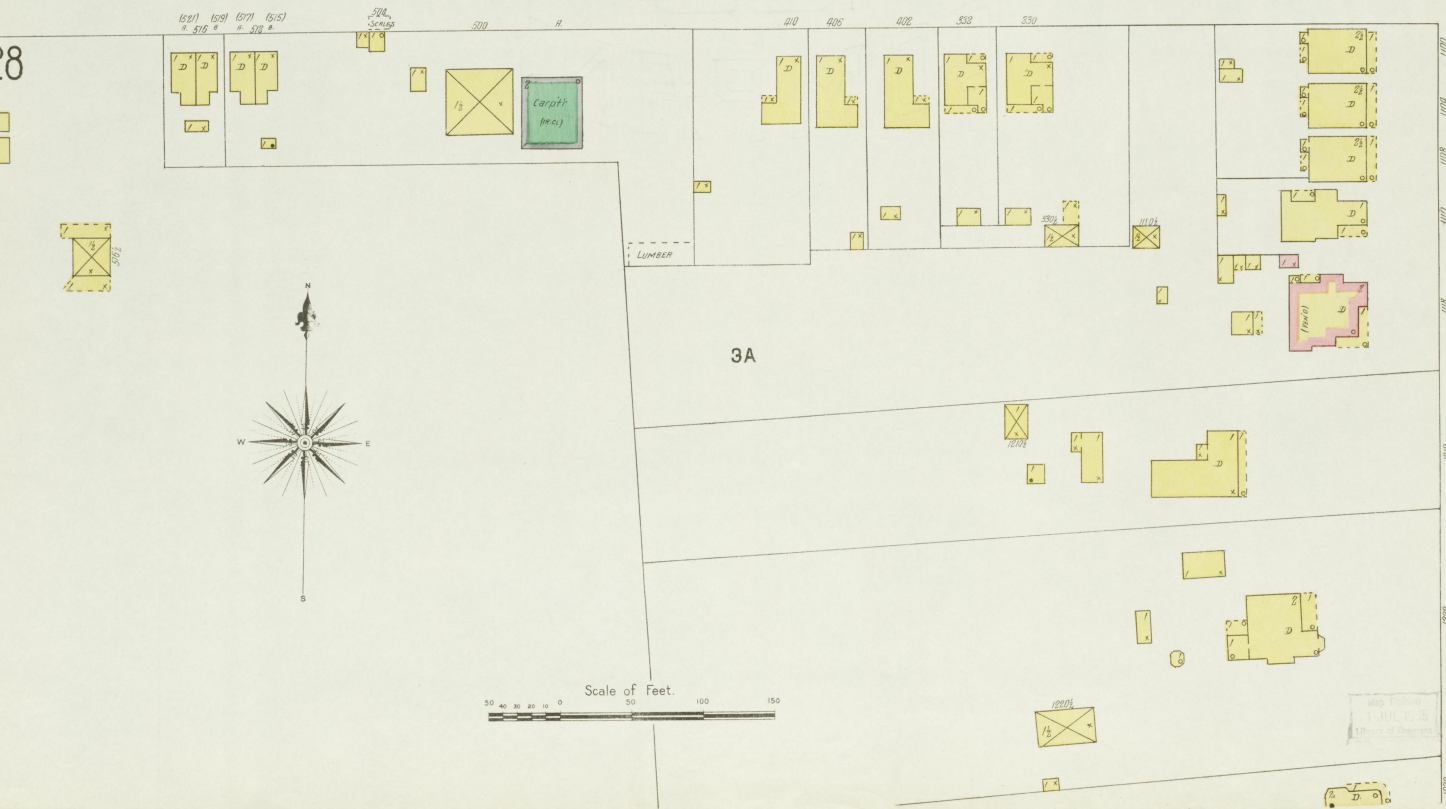
28

30

3A



Scale of Feet



22
W.VIRGINIA (NOT PAVED)

E.VIRGINIA

30

Oct. 1905
OWENSBORO
KY.

FREIGHT DEPOT

DEPOT

Buggy Warehouse

LOUISVILLE, HENDERSON & CLAYTON R.R.

1A

Warehouse (IRON CLAD)

Buggy Warehouse (IRON CLAD)

2A

29

W.CHESTNUT (NOT PAVED)

E.CHESTNUT

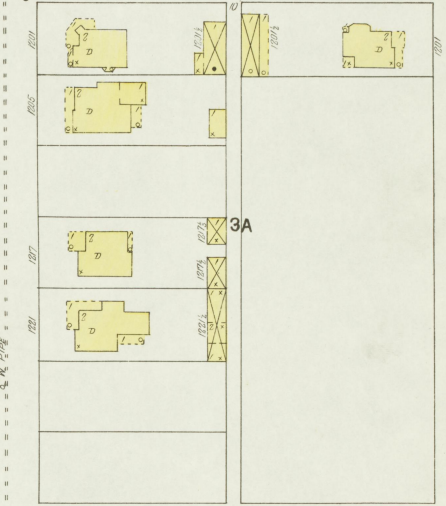
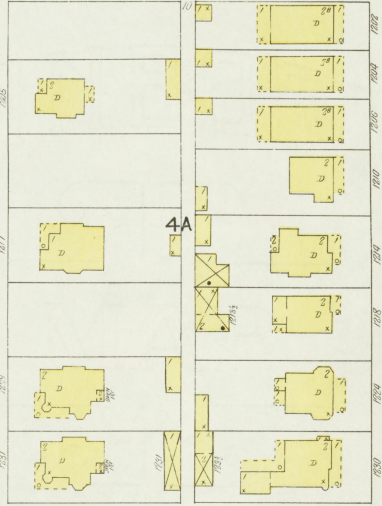
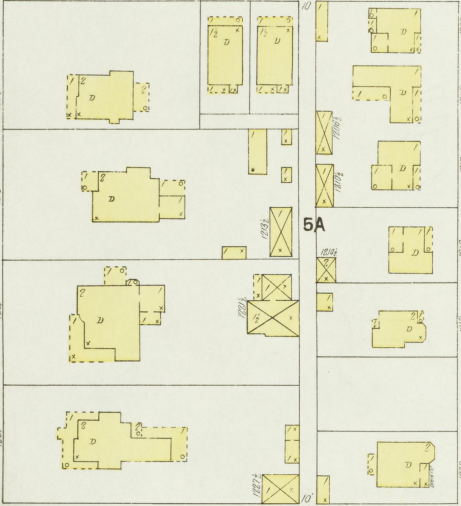
FREDERICA

ST. ANN

ALLEN

DAVISS

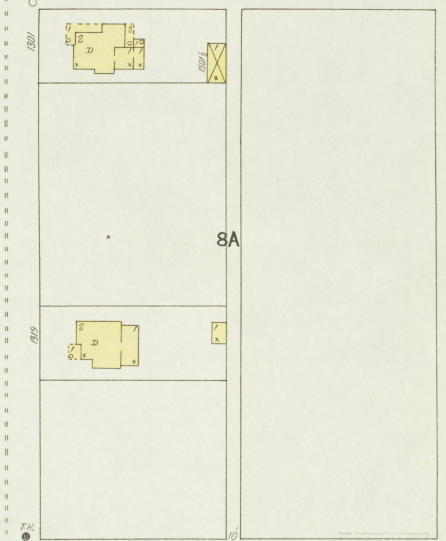
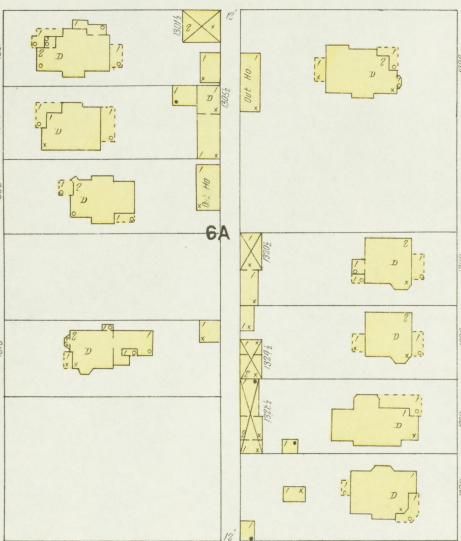
31



W.GRACE (NOT PAVED)

E.GRACE

(MACROIMIZE)



W.KENTUCKY (NOT PAVED)

E.KENTUCKY

Scale of Feet.



33

33

24

25
32

E. VIRGINIA

OCT. 1905
OWENSBORO
KY.

MOSELEY

SWEENEY

MARYLAND

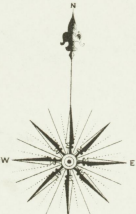
STRIPLETT

31

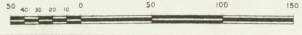
3A

2A

1A



Scale of Feet.

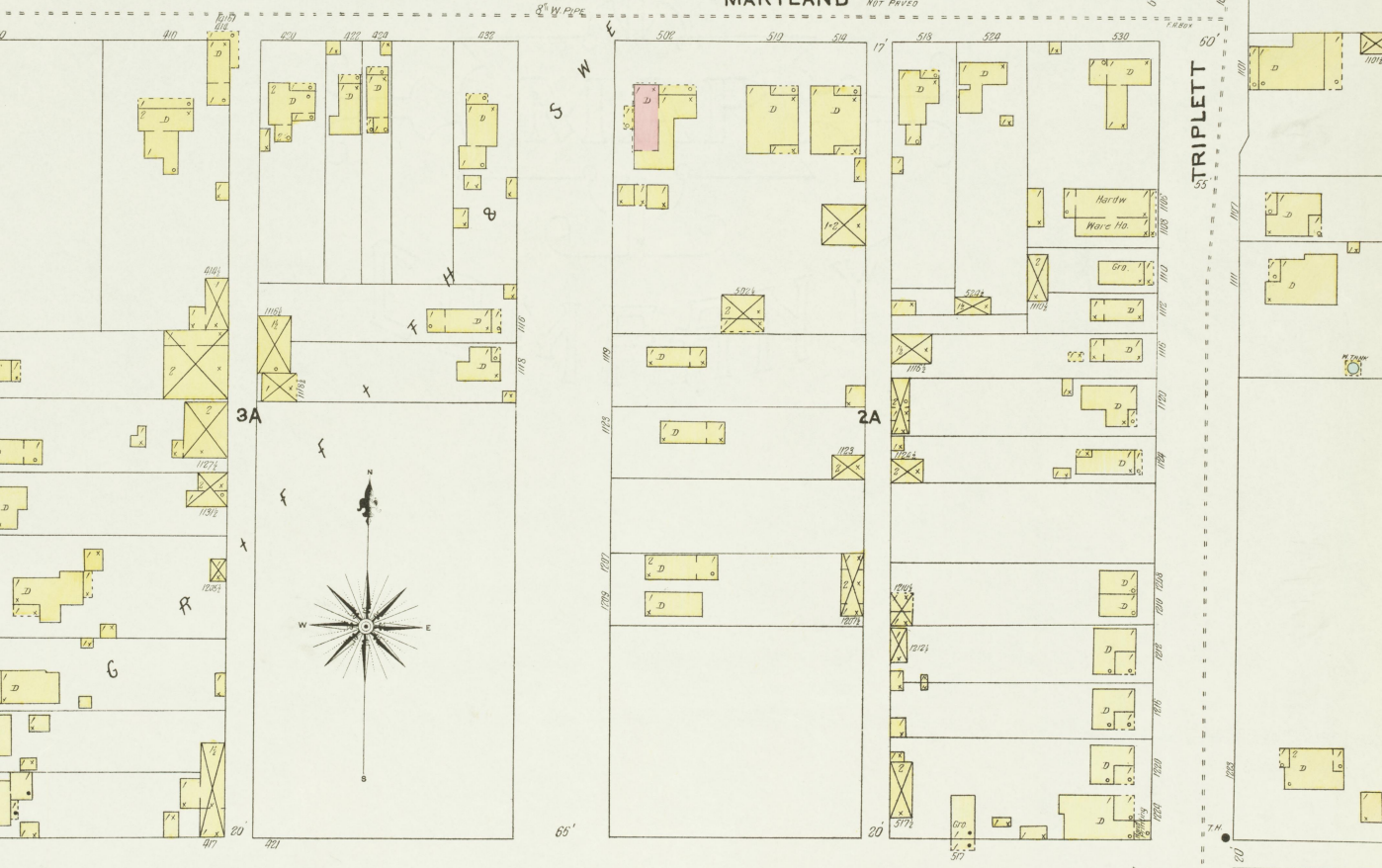
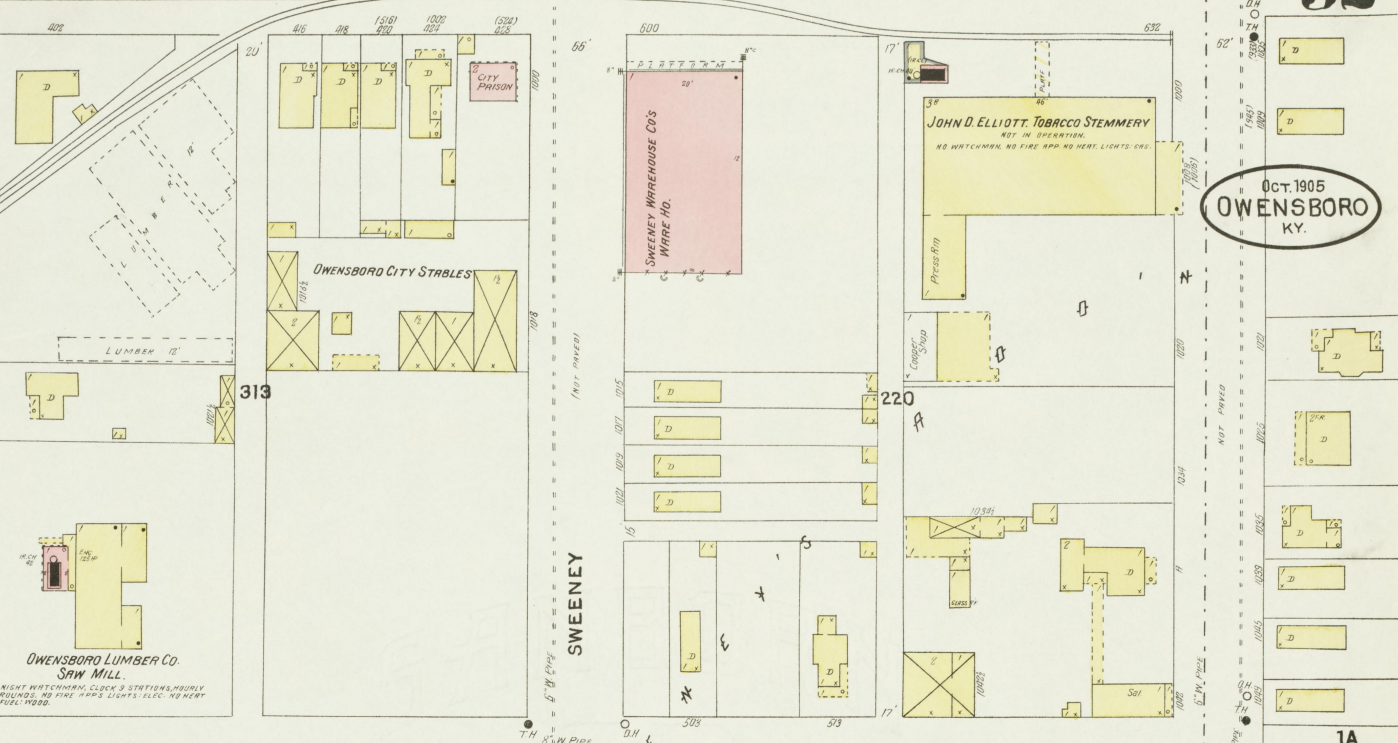


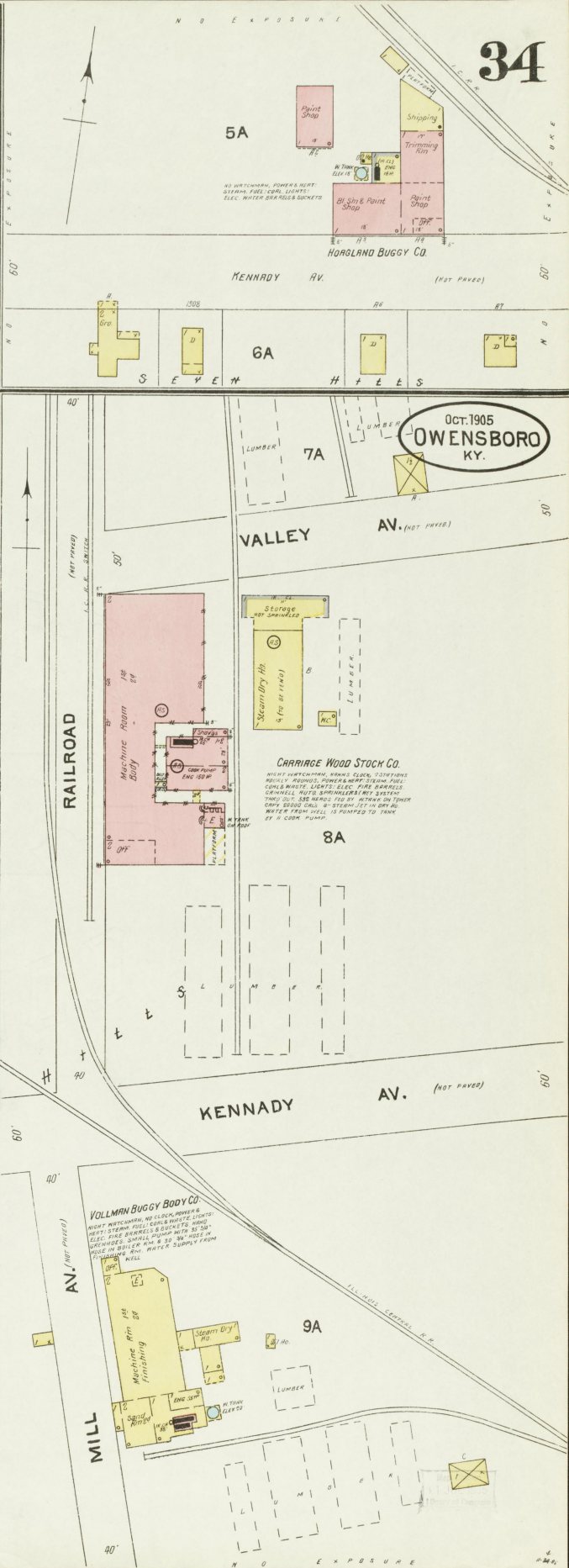
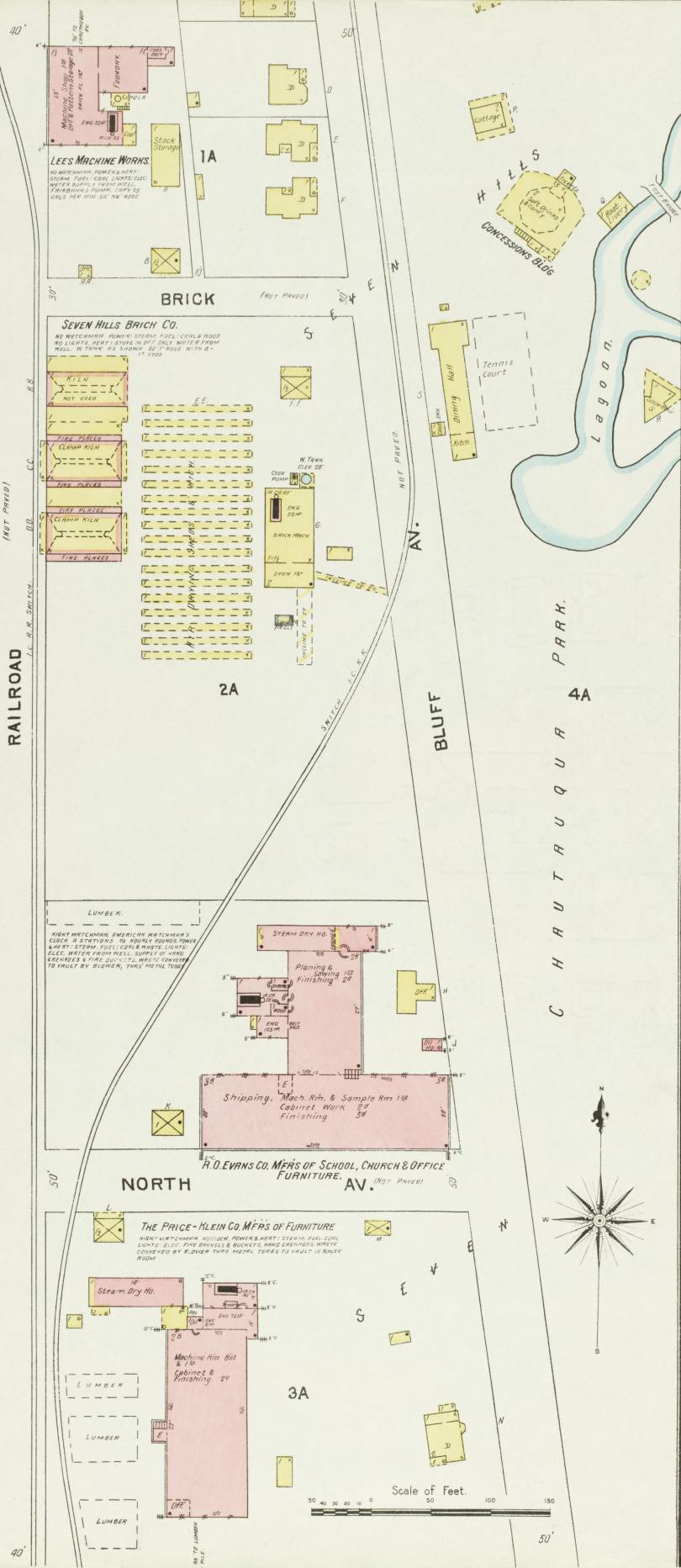
E. KENTUCKY

33

4A

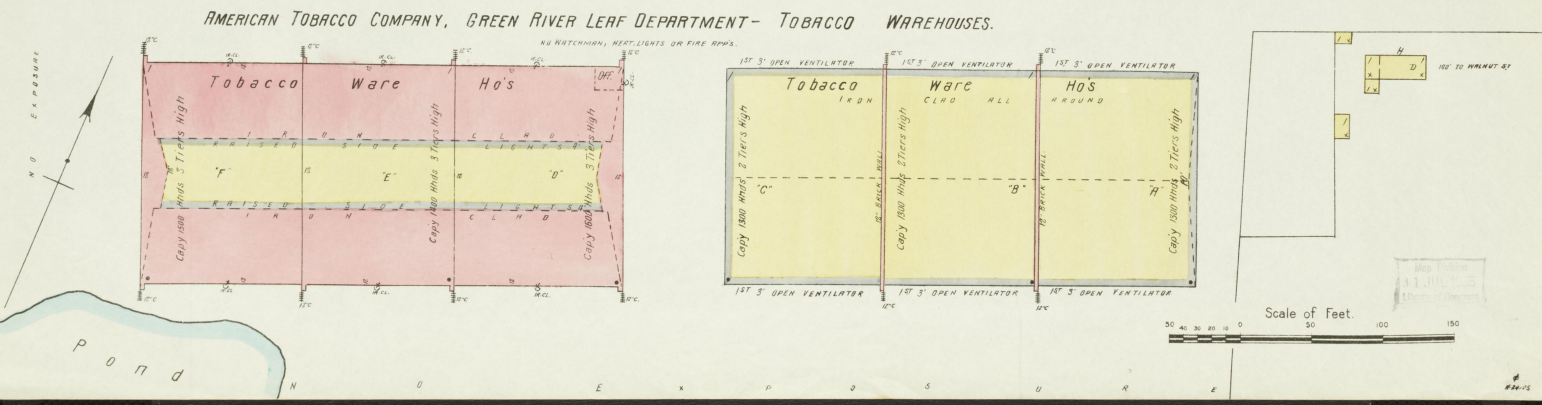
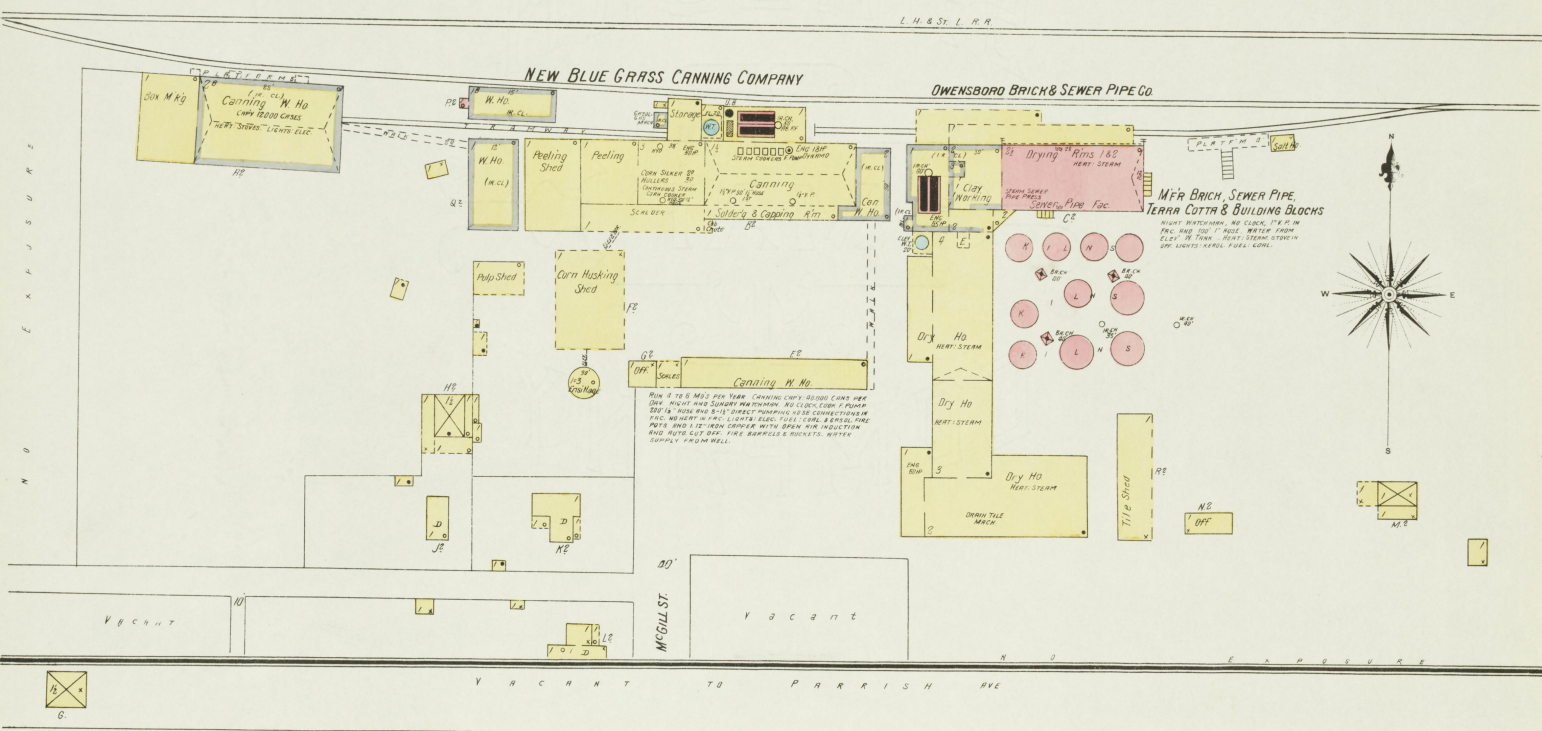
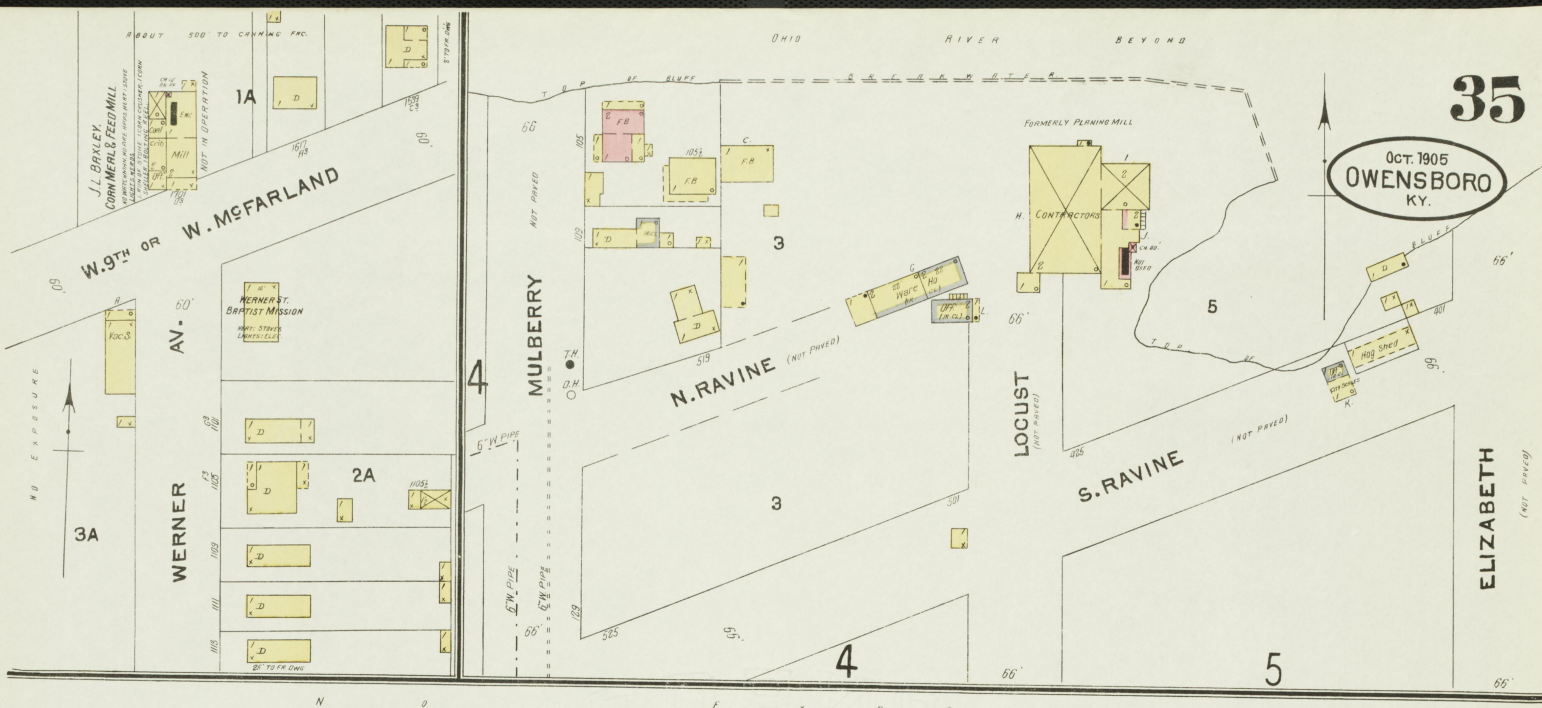
5A





Oct. 1905
OWENSBORO
KY.

OCT. 1905
OWENSBORO
KY.



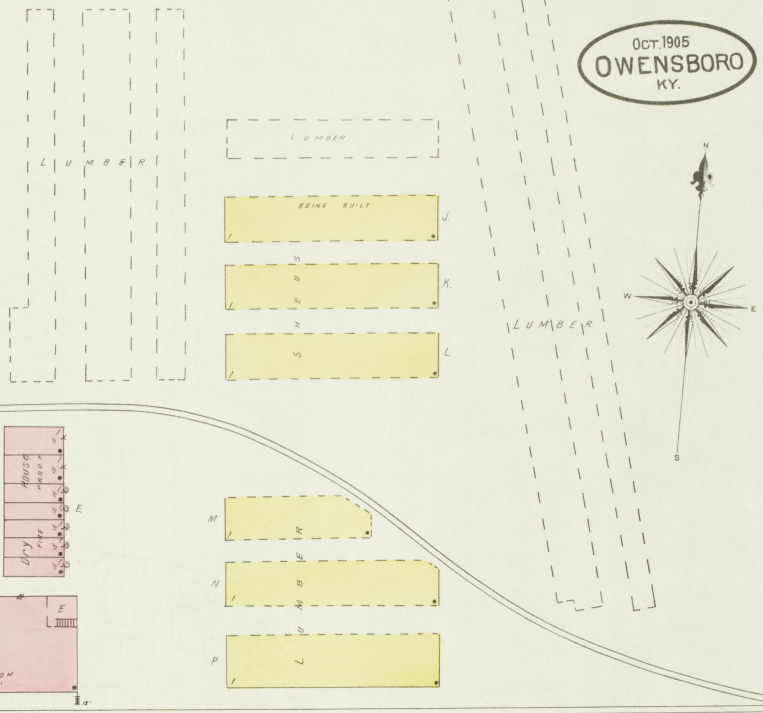
Oct. 1905
OWENSBORO
KY.

TO BE LUMBER YARD

The HICMAN EBBERT CO. MFRS OF FARM WAGONS.

SHOULD CONSTRUCTION BY THIS BY SURVEY EXTERIOR OF ALL BUILDINGS COMPLETED TO HAVE NIGHT WATCHMAN, AMERICAN CLOCK, PARADES & MORGAN'S ROOM, CHINA, BRASS, PERMANENT ALL OBSERVATIONS TO HAVE STANDARD DOUBLE FIRE DOORS, MFRS. NOTE: SOME WORKS TO BE BY E. W. TANKS & COMPANY ABOUT 1000 HOURS 4-7 HOURS IN YARD.

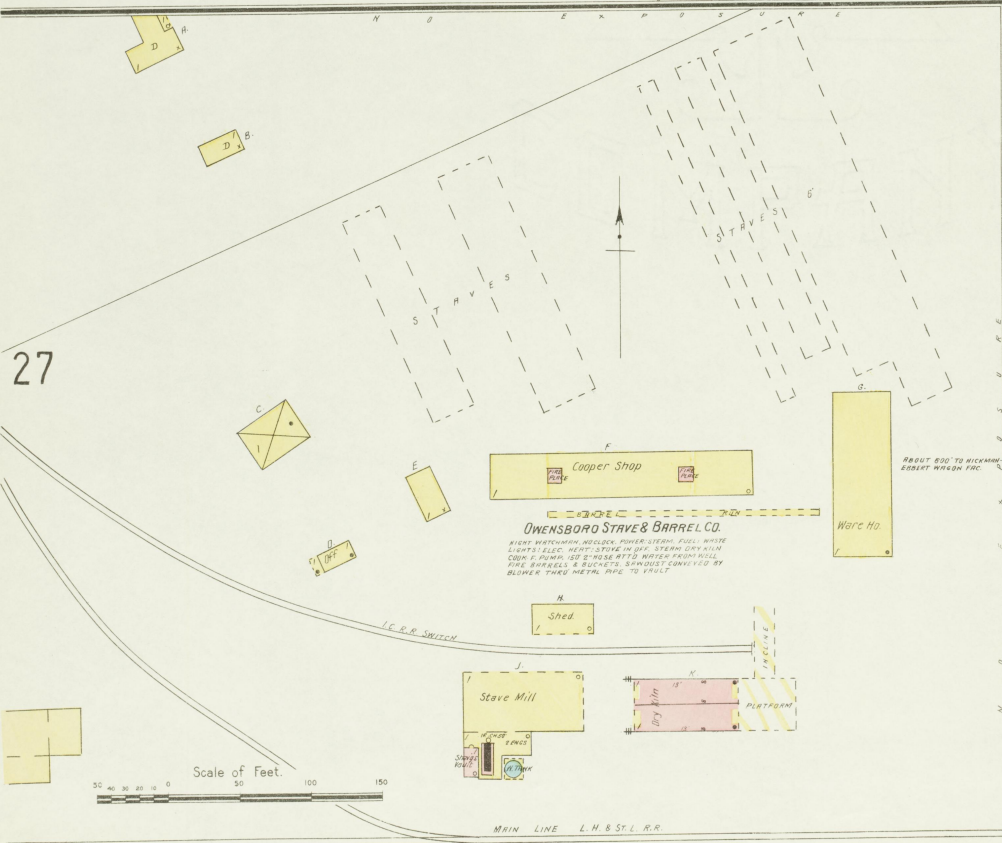
Dist No. 18 13'



ROUTE 600 TO OWENSBORO STAVE & BARREL CO. PLANT

MAIN LINE OF L.H. & S.L.R.R.

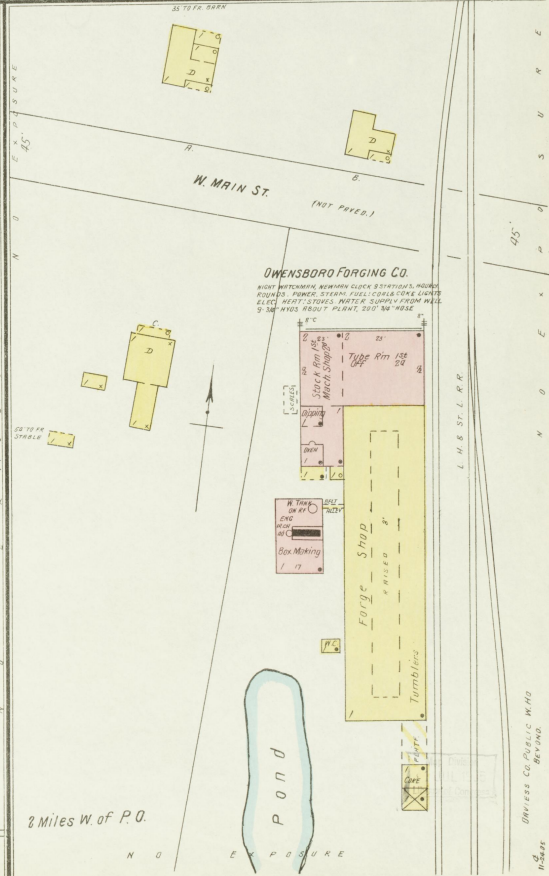
One Mile E of P.O.



27

Scale of Feet.

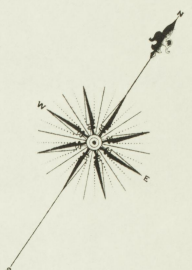
MAIN LINE L.H. & S.L.R.R.



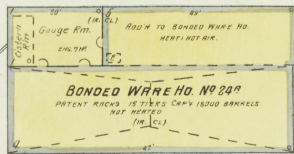
2 Miles W of P.O.

OWENSBORO FORGING CO. BEVING

OCT. 1905
OWENSBORO
KY.

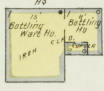
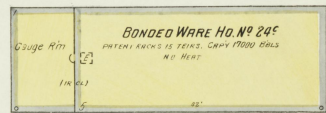
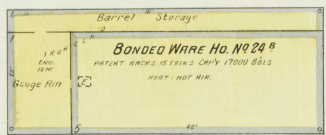
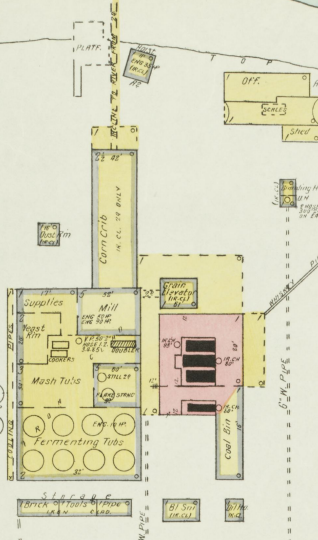


Ohio River



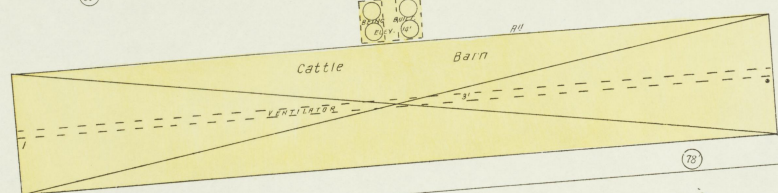
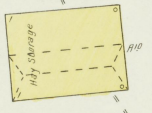
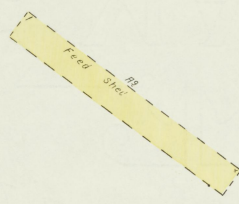
GLENMORPE DISTILLERIES CO.
N. S. DIXON GEN. MGR.
REGISTERED DISTILLERY NO 24, 29 DISTRICT DAVIESS CO. KY.

CHRY ISSUED BUSH FOR WHY HIND MADE SOUR MASH.
HOW ABOUT 8 MONTHS PER YEAR, NIGHT WATCHMAN
WORKING CLEAN UP STATIONS, HOBBS, WAGONS, WHEAT
STEAM FILL, COAL LIGHTS, ELEC. MNT. STORM &
HOT WTR. COOL WATER & DISTILLED WATER
TRUCK 24 - BUSH ON HAND 5000 GALLONS. IN
DISTILLERY WITH 50 - BUSH 4000 LBS. 50 BUSHES
BUSHES 4000 LBS. 50 BUSHES 4000 LBS. 50 BUSHES
HAND CREWLES PRIVATE FINE BLANDS CURED
WITH ALL BUSHES 4000 LBS. DIST. DEPARTMENT
DRAIN WIND LIVE IN THE DISTILLERY.



FR. BLDG TO BE BUILT HERE

W. HO. TO BE BUILT HERE



HARDINSBURG ROAD

1 1/2 Miles N.W. of P.O.

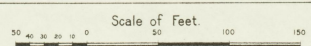
1 1/2 Miles N.E. of P.O.

FRANK MIES SLAUGHTER HO.
NO MEAT CHRYN. NO FINE APPLES. NO HEAT. LIGHTS. REFRIG. LIGHTS.

SCHMUCK BROS. SLAUGHTER HO.
NO MEAT CHRYN. NO FINE APPLES. NO HEAT. LIGHTS. REFRIG. LIGHTS.

G.W. MEISENHEIMER SLAUGHTER HO.
NOT IN USE. BROTHERN.

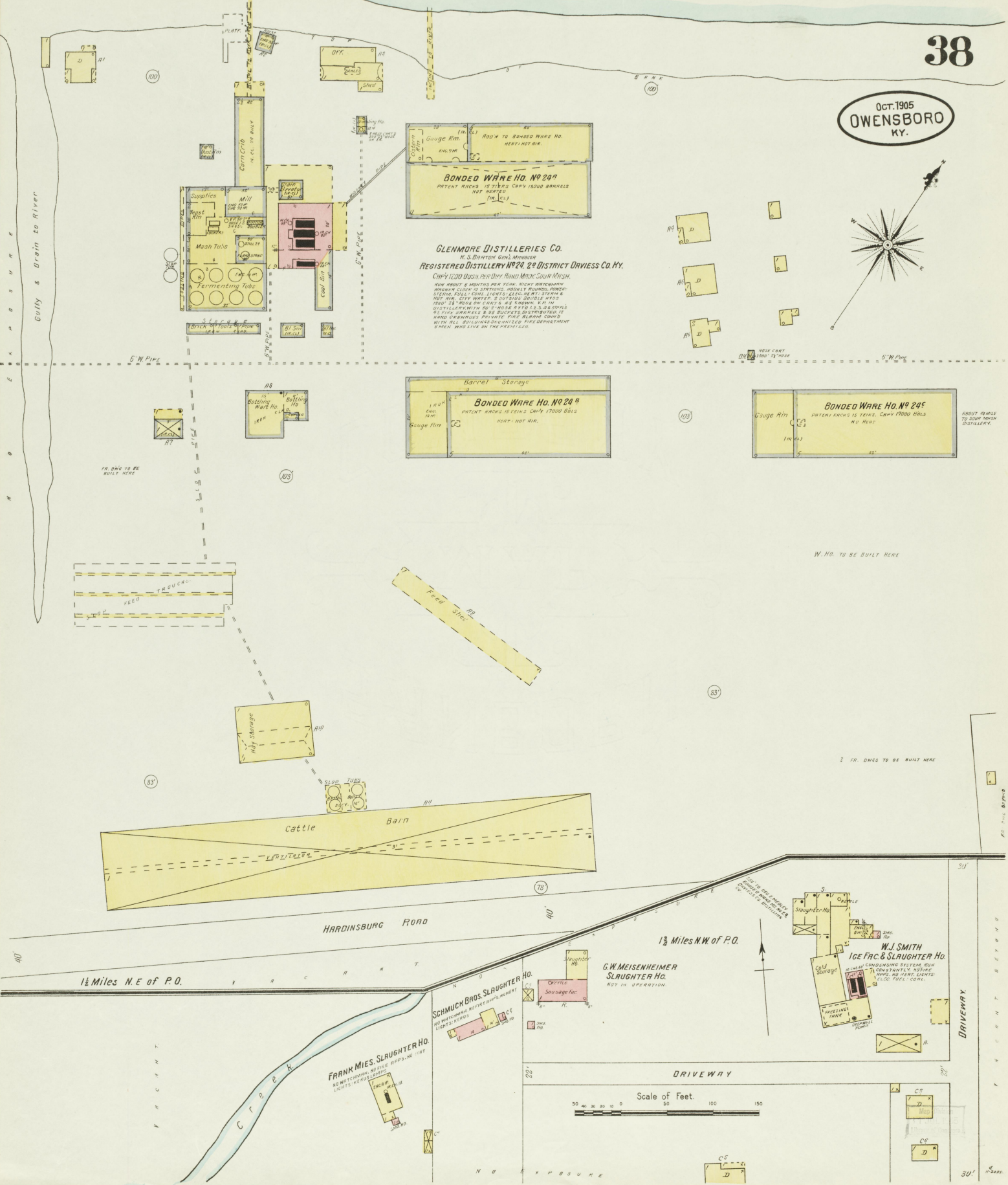
W.J. SMITH ICE FAC. & SLAUGHTER HO.
NO MEAT CHRYN. NO FINE APPLES. NO HEAT. LIGHTS. REFRIG. LIGHTS.



DRIVEWAY

DRIVEWAY

DRIVEWAY



40

OCT. 1905
OWENSBORO
KY.

THE DAVIES CO. DISTILLING CO.
REGISTERED DISTILLERY No. 29 DISTRICT
OF KENTUCKY
CAPY 400 BUSHELS. PRESENT PRODUCTION 400 BUSHELS
HAND MADE SOUP MASH WHISKEY
NO WATCHMAN. NO FIRE ALARMS. LIGHTS. LANTERNS
HEAT STEAM IN WARE HO. STOVE IN OFF. FUEL
COAL & WOOD

THE DAVIES CO. DISTILLING CO.
BONDED WARE HO. No. 2A
CAPY 15000 BLS
PATENT RACKS 158 1/2 TIERS
BACK INTO 20 FRAMES CLASS 30

THE DAVIES CO.
DISTILLING CO.
FREE WARE No. 2B
PATENT RACKS
12 TIERS
CAPY 1250 CRALS
NO HEAT
14' 6" 10'

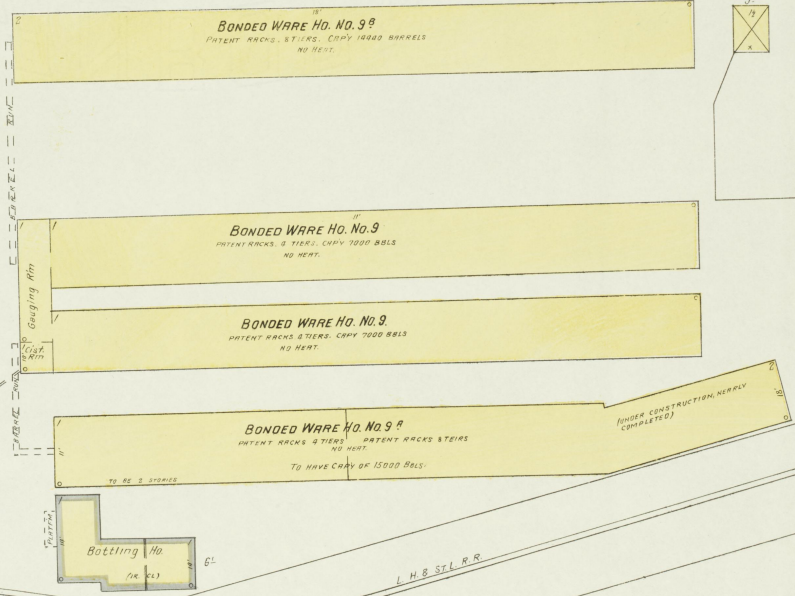
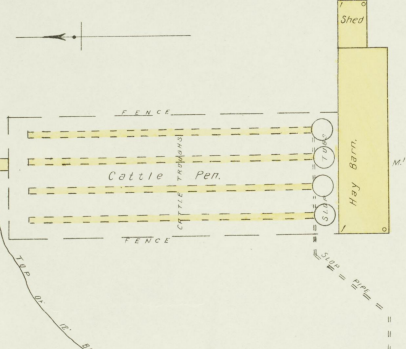
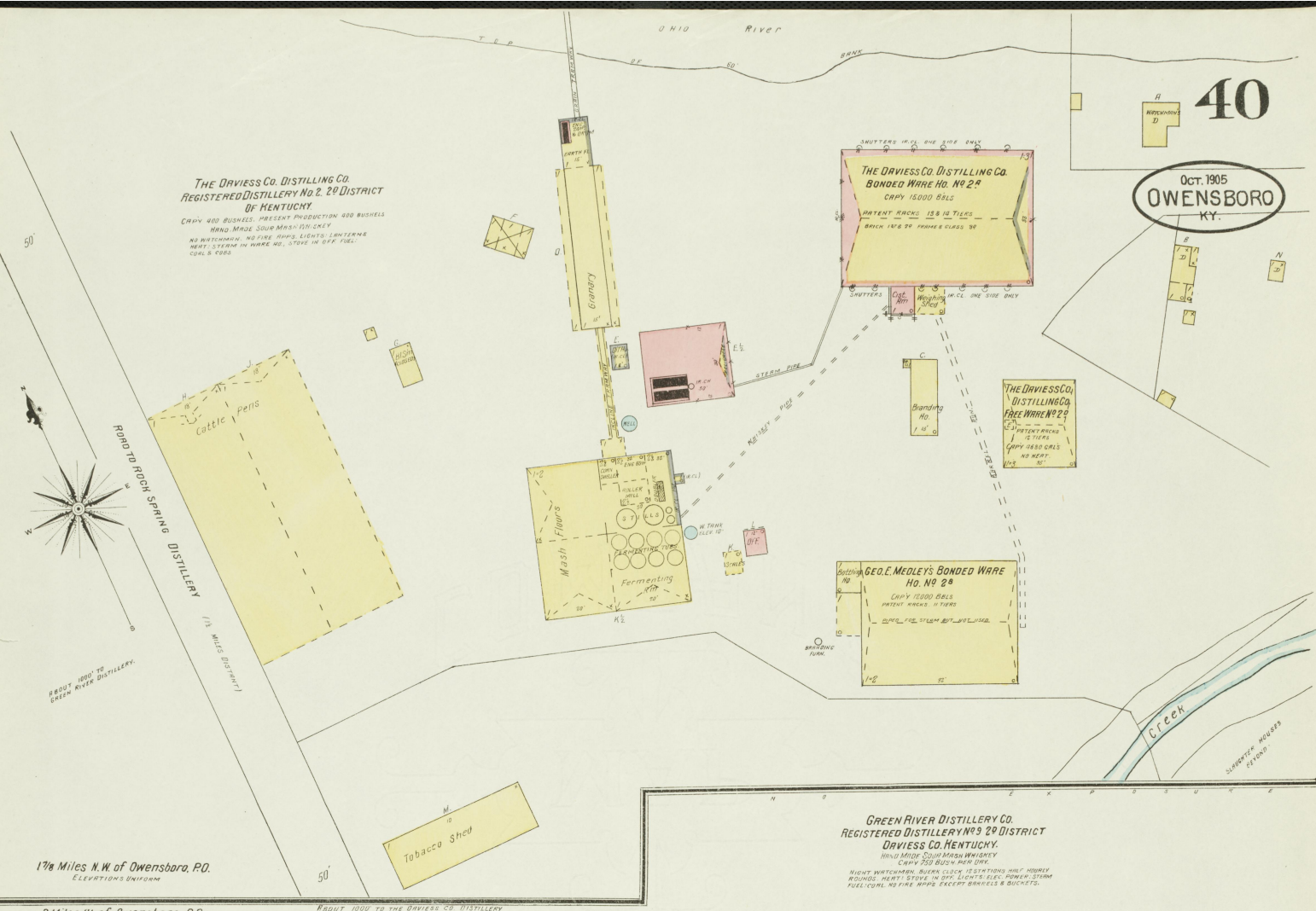
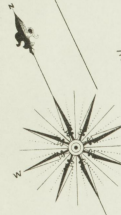
GEORGE MEDLEY'S BONDED WARE
HO. No. 2B
CAPY 12000 BLS
PATENT RACKS 11 TIERS
BACK INTO STEAM BOTT. 10' 10" 10"

GREEN RIVER DISTILLERY CO.
REGISTERED DISTILLERY No. 28 DISTRICT
DAVIES CO. KENTUCKY
HAND MADE SOUP MASH WHISKEY
CAPY 250 BUSH PER DAY
NIGHT WATCHMAN. BURNER SLOW. TESTATIONS 5/16 HOBBS
ROUNDS. HEAT STEAM IN OFF. LIGHTS. ELEC. POWER. STEAM
FUEL COAL. NO FIRE ARMES. EXCEPT BRICKS & BUCKETS

1 3/4 Miles N.W. of Owensboro, P.O.
ELEVATIONS UNIFORM

2 Miles W. of Owensboro, P.O.

ABOUT 1000 TO THE DAVIES CO. DISTILLERY



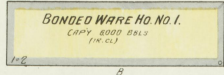
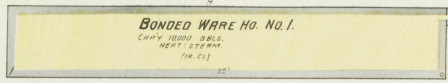
Scale of Feet.
0 50 100 150

SMALL P.O. & BANK BUILDINGS

Map of Owensboro, KY.

OCT. 1905
OWENSBORO
KY.

LOUISVILLE, HENDERSON & ST. LOUIS R.R.



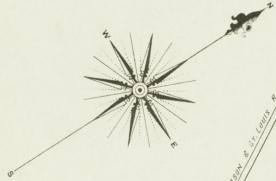
M. P. MATTINGLY
REGISTERED DISTILLERY NO. 13, 2ND DISTRICT
OF KENTUCKY.
HAND MADE SOUV. MASH WHISKEY.
CAPY 575 BUSHELS

DAY & NIGHT WATCHMAN, NO CLOCK, FIRE ARMS, LIGHTS, OR HEAT
FUEL: COAL.

N O E X P O S U R E S.

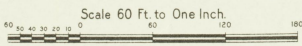
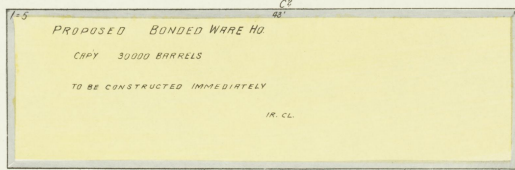
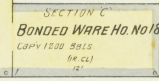
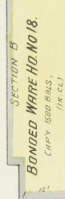
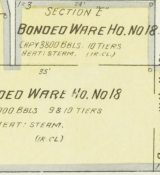
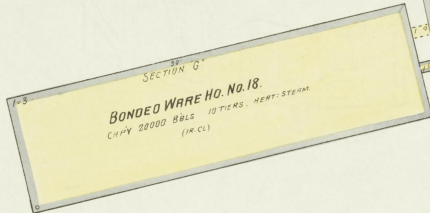
2 1/2 Miles N.W. of P.O.
ELEVATIONS UNIFORM

2 1/2 Miles N.W. of P.O.
ELEVATIONS UNIFORM



LOUISVILLE, HENDERSON & ST. LOUIS R.R.

ROCK SPRING DISTILLING CO.
8 THRESH. PADS
REGISTERED DISTILLERY NO. 18, 2ND DISTRICT, DAVIESS
CO., KENTUCKY.
HAND MADE SOUV. MASH WHISKEY.
CAPY 1500 BUSHELS. PRODUCE 700 BUSHELS.
TUN ABOUT 8 MONTHS PER YEAR.
NIGHT & SUNDAY WATCHMAN, CLOCK, 3 STATIONS, WALK ROOPLY
MOUNTED, HEAT STEAM, LIGHTS, TELE. FUEL: COAL & COKE. 250'
1" HOSE, NO OTHER FIRE ARMS.

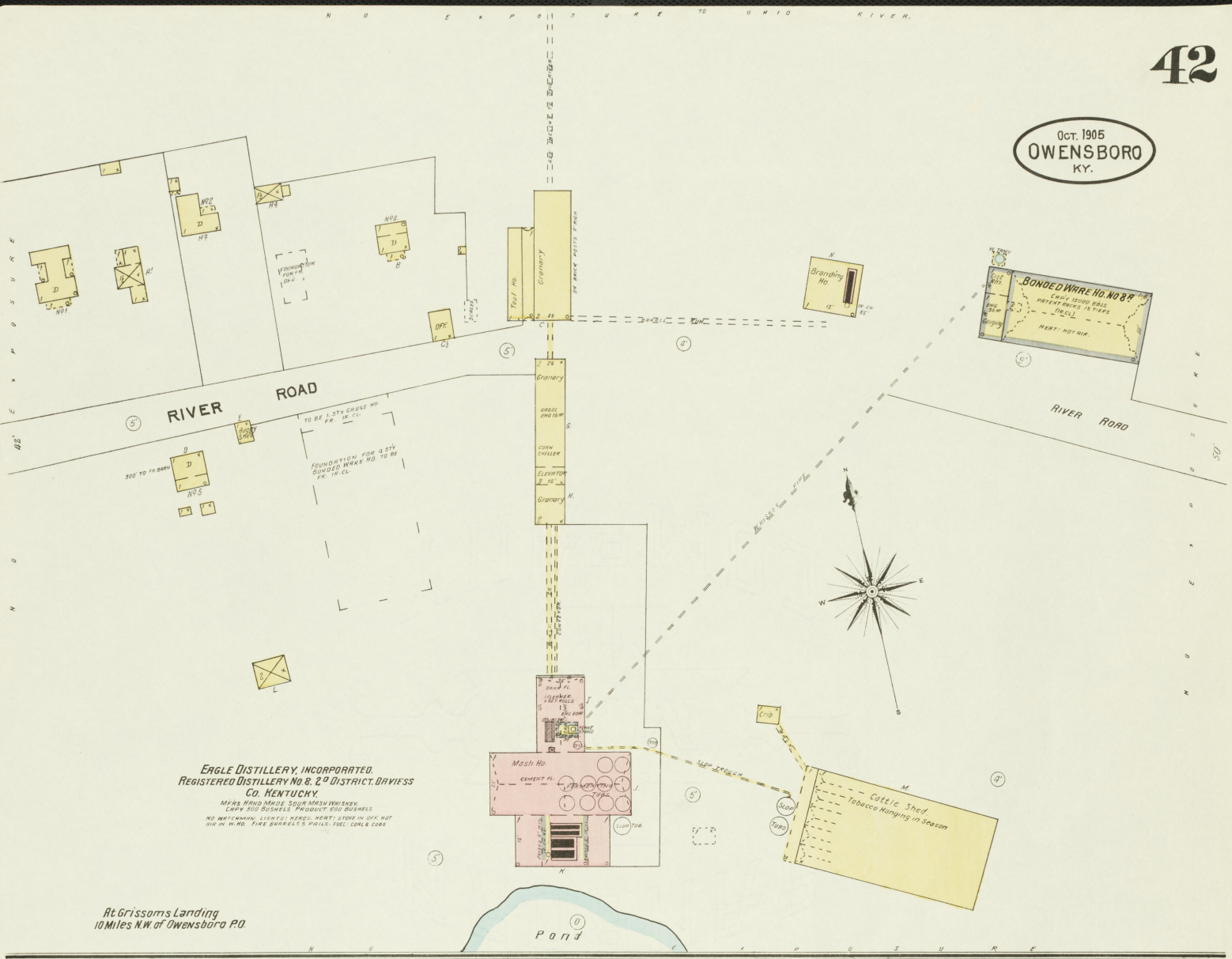


PUBLIC ROAD.

Ohio River

Map Prepared
1, 1905, 1906
By
Wm. H. ...

OCT. 1905
OWENSBORO
KY.



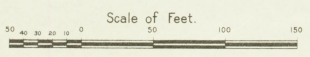
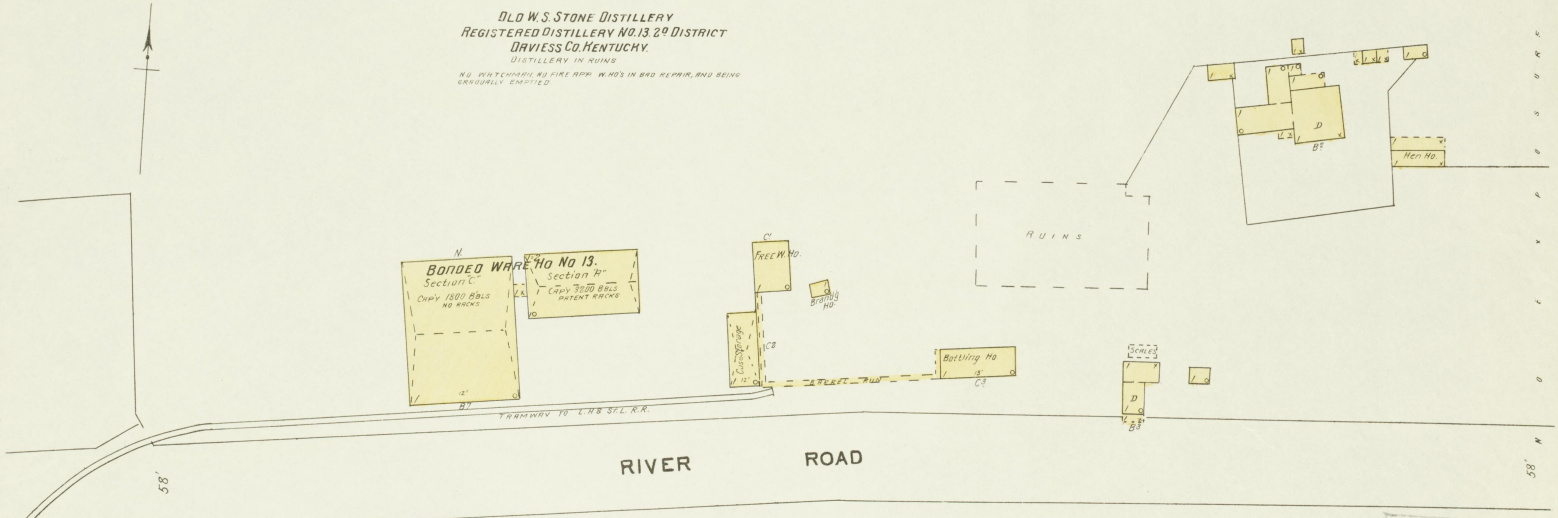
EAGLE DISTILLERY, INCORPORATED.
 REGISTERED DISTILLERY No. 8, 2nd DISTRICT, DAVIESS
 CO. KENTUCKY.
 MASH HOUSE MADE SOJA MASH WHISKY.
 CARRY 500 BUSHELS PRODUCT 500 BUSHELS
 NO WATCHMAN, LIGHTS, KEYS, HEAT, STOVE IN OFF. NOT
 100 IN W. NO. FIRE BARRELS & PAILS. FEEL. COALS, COGS

At Grissoms Landing
 10 Miles N.W. of Owensboro P.O.

5 Miles N.W. of Owensboro, on Road to Grissom Landing

OLD W.S. STONE DISTILLERY
 REGISTERED DISTILLERY No. 13 2nd DISTRICT
 DAVIESS CO. KENTUCKY.
 DISTILLERY IN RUINS

NO WATCHMAN, NO FIRE APP. W. NO'S IN BRO. REPAIR, AND BEING
 REGULARLY EMPTIED.



Map drawn
 1905
 J. H. ...