

FEBRUARY 1992 NEWS

Free at Selected Business Locations
Home Delivery at \$5 per Year

LEXINGTON GAY/LESBIAN SERVICE ORGANIZATION, P.O. BOX 11471, LEXINGTON, KY 40575

GAY COMMUNITY AWARDS BANQUET PLANNED FOR JUNE

The Lexington chapter of the Tri-State Gay Rodeo Association is proposing to sponsor a formal banquet this coming June in order to recognize and honor individuals within the Lexington area who have demonstrated outstanding achievement towards the advancement of Lexington's gay and lesbian community.

All lesbians and/or gay related organizations in the Lexington area that wish to be a part of this ceremony are encouraged to discuss it at their next meeting. Each organization is asked to choose one of its members to be honored at the banquet.

Lexington's gay and lesbian community has much to be proud of in regards to the efforts of the individuals who work tirelessly to make life better for us all. The proposed awards ceremony would be a way of formally recognizing these contributions on a community-wide basis.

A meeting of representatives from the various organizations will be held in the near future to discuss the proposal if enough interest is expressed. If your group or organization is interested in participating in this gala event please contact John at 254-7150 or write to TSGRA, P.O. Box 1576, Lexington, KY 40592.

FAIRNESS LEADERS PROMISE TO PRESS ON WITH CAMPAIGN

By DAVID WILLIAMS

Despite failure to have the Fairness Amendment reported out of committee on December 23, Louisville activists promise to continue working for the passage of the controversial ordinance by the Louisville Board of Aldermen in 1992. The campaign is also picking up new volunteers from a wide spectrum of the community.

"We no longer have the choice of going home." Carla Wallace, co-coordinator of the continued on page 9

PLANNING IS UNDER WAY FOR BLUEGRASS GAY PRIDE WEEK 1992

By Debbie Currie

Planning for Pride Week 1992 got officially under way at an organizational meeting of the Pride Week Committee, January 16, and we feel that we have plenty to be excited about. One of our primary goals this year is to promote higher attendance at the various events, to that end we are putting together a schedule of events that we hope you won't be able to resist!

Now that we have gotten organized, we are looking for volunteers who would like to help plan and produce Pride Week. We need help in a lot of different areas, but most specifically, we are looking for a person, or persons, to coordinate publicity, and someone to organize a raffle to be held during Pride Week. Give us a call if you you can help with either of these projects.

If you are willing to help, but unable to take on a major job, please contact us. There are many details to take care of, and we need your help. The committee's next three meetings are Wednesday, 8:00 P.M. February 5, 15, and March 4. Call Debbie at 255-3851 or Craig at 266-8887.

GLSO News

Published monthly by the Lexington
Gay/Lesbian Services Organization,
P.O. Box 11471, Lexington, KY 40575

Chuck Smith, editor

Craig Clere, president, GLSO Board

Mailing: Lee. Folding and stuffing: Lee,
Laurie, Mark, Steve, and Willy.

The *Esmerelda's Parlour* column with news and viewpoints of interest to lesbians in the Bluegrass is produced by Esmerelda Collective.

Views or opinions expressed in *GLSO News* are those of the authors and don't necessarily represent those of the GLSO Board of Directors. Submissions are welcome. All submissions become the property of GLSO and must indicate full name and address of the author. The staff reserves the right to edit submissions and ads to meet publishing requirements, as well as the right to reject any submission. Placement of advertising in the *GLSO News* does not denote a person's sexual orientation nor a business's customer preference. .

GLSO NEWS NEEDS YOUR HELP

To become a member of the Gay and Lesbian Services Organization send dues \$10/single or \$15/couple, this includes a *GLSO News* subscription. A subscription without membership is \$5 per year. Send to GLSO Newsletter, Post Office Box 11471, Lexington, Kentucky 40575.

2 - GLSO/February

A word from the editor

CLOSETS ARE FOR CLOTHES

By Chuck Smith

This issue of the *GLSO News* has a new format for the monthly calendar of events. This change should make it easier to keep track of what is going on. You may want to put the calendar on your bulletin board or the door of your fridge.

The new calendar represents more than just a new look for the list of events. This change was necessary because of the increasing number of events taking place in the Bluegrass that are organized by or of interest to gay men, lesbians, and bisexuals.

This is certainly good news. Even though one generally expects activities to diminish during the cold winter months, there seems to have been an increase in area events of interest to gay people. And, not only is there more going on, these events are across a wide spectrum: service, educational, social, spiritual and political activities are all on the increase. Moreover, the planning committee for Pride Week 1992 is hard at work to ensure that this June's celebration will be bigger and more exciting than ever.

There are reasons to expect more activity in several areas to be organized in the next few weeks. The well planned Fairness Campaign in Louisville inspired some here to start thinking along those lines. At UK the students' gay, lesbian, bisexual group has begun to network with other groups and give being gay a more positive image.

All of this is yet another indication that we can make good things happen. So look over what is going on and find something that interests you and get involved. That is hardly taking a risk. If you don't like it, don't do it again. But you will probably find something enjoyable and make some new friends.

VIEWPOINT

GAY MEN'S SPIRITUAL GROUP IS FORUM FOR SPIRITUAL GROWTH

A group of gay men have been meeting regularly to reflect on spirituality. Called the Gay Men's Spiritual Group, it provides a forum for gay men to recover, discover, and explore their spirituality in a non-threatening affirming environment. GMSG offers gay men in the Central Kentucky area an opportunity to affirm one another in our individual life journeys. This affirmation encourages growth for the individual and the community.

We all struggle with our "spiritual side," but without our spirituality we are without hope. We are hopeless. GMSG provides hope. GMSG lets us know that we are not alone. It provides us a forum for dialogue. This dialogue reflects our fears and frustrations, rejections, as well as our aspirations, dreams and hopes.

In February, GMSG will begin a two-part discussion on "spiritual friendship." You may be asking yourself, "What is spiritual friendship?" It is what we all seek, but are scared to find: acceptance.

Every other meeting the group has a potluck. That is where you can share your culinary delights. Yes, we accepted the thought of eating Oreo cookies and champagne together.

Through our discussions and potlucks we are able to experience the uniqueness and diversity within the gay community. "Diversity," as the song goes, "makes us strong." Help affirm yourself and your community. Attend GMSG.

GMSG Meeting Schedule

Feb. 7: Potluck dinner

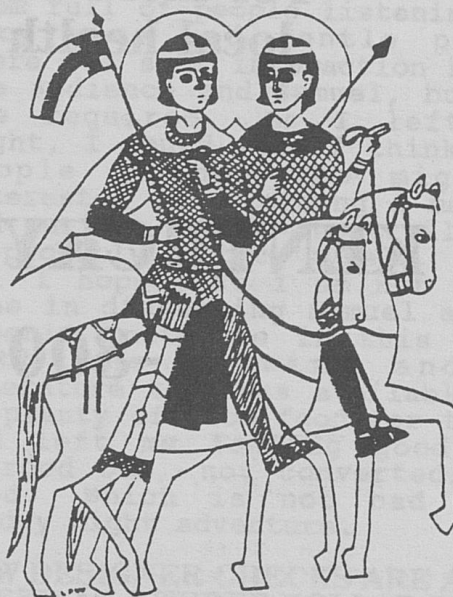
Feb. 21 "Spiritual Friendship"

In the months to come a variety of programs are planned: "The Way of the Cross of Persons with AIDS." on Good Friday, and examination on Buddhist spirituality, a presentation by the Dean of Lexington Theological Seminary, Michael Kinnamon, and a video on "AIDS, The Church's Response."

For more information about the GMSG and the meeting schedule or to get their newsletter contact Steve at 233-1782.

GLSO NEWS SEEKS INFORMATION ON GAY RELIGIOUS VIEWPOINTS

The March issue of *GLSO News* will examine the views of Bluegrass gay men, lesbians, and bisexual people about religion. Views on the role of spirituality and religion in our lives will be presented. There also will be a look at the activities of local gay religious and spiritual groups. If you would like to contribute to this issue, call Chuck at 253-0661.



SAINTS SERGIUS AND BACCHUS
Sergius and Bacchus are described in martyrologies as Christian soldier-lovers martyred in the 3rd or early 4th Century for refusing to worship the emperor's god. In orthodox icons they're portrayed as equestrian soldiers their halos overlapping and their horses nuzzling each other.



**The key to HIV
Prevention is
Through EDUCATION.**

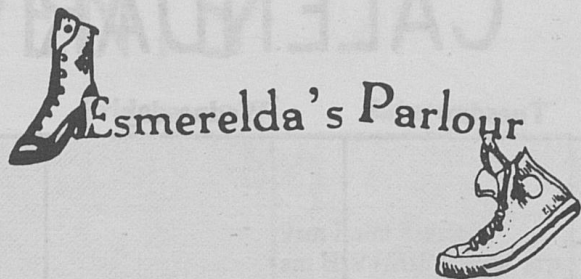
**Spread Facts,
not HIV.**

**For more information, call your
local health department or the**

**KENTUCKY AIDS HOTLINE
1-800-654-AIDS**

HIV is the virus that causes AIDS.

**KENTUCKY
RESPONDS
TO AIDS**



The Phoenix Institute -- It's Not So Weird after All!

By Debbie Currie

I'm going to delay beginning our series of articles on safe sex for lesbians until next month so I can share with you an experience I had last month. Many of you may be familiar with the Phoenix Institute, if only the name. It's been around for quite some time, and while I was aware of its existence, that was about all I knew about it. I had some vague awareness of a character named Samuel, and thought that there were some "weird" goings-on, but beyond that I had little interest in it beyond knowing a few people who attended meetings.

Last month that all changed. On January 4, I attended a meeting at the Phoenix Institute with a friend and heard Samuel. My friend had assured me that there would be no "weird" goings-on and allayed my fears that I would have to somehow participate (and perhaps make a fool of myself). So I thought, "Why not?" and off we went. And what an experience it was!

For those of you who know nothing about Samuel and the Phoenix Institute, I will try to explain it briefly, hopefully without offending anyone in the process. Or perhaps it would be safer to lift a quote directly from one of their pamphlets: "Samuel is a discarnate entity -- a being without physical form who is channeled by Lea Schultz. He is here to give a message, not to be a guru, not to be a leader, but to

teach us to become our own gurus and our own leaders . . . Samuel is here to deliver a message that will help us learn to trust ourselves, to love ourselves. His is a message of hope and love and growth for us and our world at a time when that message is desperately needed.

Now, I admit that the open-mindedness I brought to the meeting was tinged with a healthy dose of skepticism. However, while I am still not quite sure what to make of Samuel, I am quite clear on how his message made me feel: empowered.

The meeting, which lasted about an hour, brimmed with positive thoughts. It felt comfortable and non-threatening. There were quite a few familiar faces around me and there was nothing strange about it--just a room full of people listening to a very wise and gentle person. There was some interaction between the audience and Samuel, but none was required. As I left that night, I found myself thinking of people I know who might be interested in attending a meeting, and curious enough about all of it to probably go back myself.

I hope that I am not out of line in discussing Samuel and the Phoenix Institute in this forum. Both the meeting and the literature that was available gave me plenty of good food for thought and left me feeling good, not weirded out, not converted, just good. Which is not bad for a Sunday night adventure.

NEW DESIGNER CHECKS ARE AS QUEER AS A THREE DOLLAR BILL

Tasteful checks with themes related to Gay Pride, Women's Rights, and AIDS Awareness are now available. Contact: Harland, Check Printers, 2939 Miller Road, Decatur, GA 30035. 404 981-9460.

February CALENDAR OF EVENTS

1992

Sunday	Monday	Tuesday	Wednesday	Thursday	Friday	Saturday																								
<table border="1"> <tr> <td>January</td> <td>1992</td> <td>March</td> <td>1992</td> </tr> <tr> <td></td> <td>1 2 3 4</td> <td>1 2 3 4 5 6 7</td> <td></td> </tr> <tr> <td>5 6 7 8 9 10 11</td> <td>8 9 10 11 12 13 14</td> <td></td> <td></td> </tr> <tr> <td>12 13 14 15 16 17 18</td> <td>15 16 17 18 19 20 21</td> <td></td> <td></td> </tr> <tr> <td>19 20 21 22 23 24 25</td> <td>22 23 24 25 26 27 28</td> <td></td> <td></td> </tr> <tr> <td>26 27 28 29 30 31</td> <td>29 30 31</td> <td></td> <td></td> </tr> </table>	January	1992	March	1992		1 2 3 4	1 2 3 4 5 6 7		5 6 7 8 9 10 11	8 9 10 11 12 13 14			12 13 14 15 16 17 18	15 16 17 18 19 20 21			19 20 21 22 23 24 25	22 23 24 25 26 27 28			26 27 28 29 30 31	29 30 31								1 9am Front Runners am HIV+/AIDS supp. grp.
January	1992	March	1992																											
	1 2 3 4	1 2 3 4 5 6 7																												
5 6 7 8 9 10 11	8 9 10 11 12 13 14																													
12 13 14 15 16 17 18	15 16 17 18 19 20 21																													
19 20 21 22 23 24 25	22 23 24 25 26 27 28																													
26 27 28 29 30 31	29 30 31																													
2 Tri-state Gay Rodeo Asso. 4pm gay/lesbian AA	3	4 5:30pm GLSO phonline meeting 7pm gay/lesbian Al-Anon 8pm gay film festival (see p.8) 8:45pm rainbow bowling league	5 8pm gay/lesbian AA 8pm pride week committee	6 pm HIV+/AIDS supp. grp. 7:30pm Lex. mens Chorus 7:30pm GLUE meeting 8pm gay film festival	7 7pm gay mens spiritual group 8pm gay/lesbian AA	8 9am front runners am HIV+/AIDS supp. grp. Yer Girlfriend concert																								
9 4pm gay/lesbian AA 4pm AVOL board meeting 5:30pm AVOL general meeting	10	11 7pm gay/lesbian Al-Anon 8:45pm rainbow bowling league 8pm gay film festival	12 7pm NAMES project meeting 8pm gay/lesbian AA	13 7:30 GLUE social pm HIV+/AIDS supp. grp. 7:00pm NAMES panel making 7:30 Lex. mens Chorus 8pm gay film festival	14 8pm gay/lesbian AA	15 9am front runners am HIV+/AIDS supp. grp.																								
16 2pm lesbian potluck 4pm gay/lesbian AA	17	18 7pm gay/lesbian Al-Anon 8:45pm rainbow bowling league	19 8pm gay/lesbian AA 8pm pride week committee	20 pm HIV+/AIDS supp. grp. 7:30pm GLUE meeting 7:30pm Lex. mens Chorus	21 8pm gay/lesbian AA 7pm gay mens spiritual group	22 8am front runners am HIV+/AIDS supp. grp.																								
Transylvania Gay/Lesbian Video Fest, Feb. 17-21, 7 p.m.																														
23 4pm gay/lesbian AA	24	25 7pm gay/lesbian Al-Anon 8:45pm rainbow bowling league	26 6:30pm GLSO fold&stuff 7:30pm GLSO board meeting 8:00pm gay/lesbian AA	27 pm HIV+/AIDS supp. grp. 7:30pm GLUE social 7:30pm Lex. mens Chorus	28 7pm Dignity 8pm gay/lesbian AA	29 9am front runners 8pm Reel World Concert (see p.8)																								

DIRECTORY

GLSO Gayline	231-0335
GLSO Board (Craig)	266-8887
GLSO News (Chuck)	253-0661
GLSO Speakers Bureau (Bill)	268-9175
GLSO Phonline (Tony)	268-9175
GLSO Coming Out Group (Mary)	266-5904
(Steve)	233-1782
Rainbow Bowling League	267-2127
Tri-state Gay Rodeo (Terry)	233-7286
NAMBS Project Kentucky (Katie)	223-3855
Lesbian Potluck	223-3925
Esmerelda's Parlour (Debbie)	255-3851
Front Runners/running club (Dan)	254-6850
UK Gay/Lesbian Students (Keith)	266-8934
Lexington Men's Chorus (Shelby)	231-0090
(Michael)	233-3709
Gay/Lesbian AA (Dave)	277-9522
Gay/Lesbian Al-Anon (Robert)	293-0516
RELIGIOUS GROUPS	
Dignity: Catholic (Don)	299-4458
Inegrity: Episcopal (Kay)	277-4384
Interweaver: Unitarian (Craig)	266-8887
Gay Mens Spiritual Group (Steve)	233-1782
AIDS Information & Services	
Kentucky AIDS Hotline	800 645-2437
AVOL (info. & services)	254-2865
HIV + ARC, AIDS Support Groups (AVOL)	254-2865
Anonymous AIDS Testing	
Lexington-Fayette County	288-2437
Madison County	623-7312
Jessamine County	885-4149
Woodford County	837-4541
Louisville & Jefferson County	
Gay/Lesbian Information Line	589-3316
National Gay/Lesbian Crisisline	
(800) 347-4283	
Lexington Gay/Lesbian Information	
231-0335	

ARTS NEWS

BENEFIT CONCERT FEATURES REEL WORLD STRING BAND **By Debbie Currie**

Reel World String Band will be performing a benefit concert on Saturday, February 29, at the Unitarian Universalist Church in Lexington. The primary goal of the concert is to help raise funds to acquire a service dog for Linda Laporte.

The dog will be supplied through Paws with a Cause. This nonprofit organization identifies and develops ways to establish mutually beneficial working relationships between people with disabilities and dogs. The dogs can perform an amazing variety of service for their owners and training them is extremely expensive.

The concert is a wonderful opportunity for those of us in the community to show our support for Linda and to show our gratitude for all she has done for us. Through Athena Productions, and Crossed Fingers Productions before that, Linda has been instrumental in bringing an impressive array of performers to Lexington for our enjoyment. And of course, more is yet to come.

In addition to raising funds for Linda's service dog, (a female golden retriever, for you dog folks out there), a portion of the proceeds will go to support Pride Week 1992.

The doors will open at 7:30 p.m., with the concert beginning at 8:00 p.m. Admission is on a sliding scale for this event: \$7, \$6, and \$5. Please give all you can. For more information or to volunteer to help with the event call Debbie at 255-3851.

GAY/LESBIAN SCHOLARSHIP FOR THE UNIVERSITY OF TOLEDO

A University of Toledo graduate set up a scholarship fund for the exclusive benefit of Lesbian or Gay students at that university. Two scholarships will be awarded annually on the basis of need. Applicants also submit an essay on problems facing gay people today.

8 - GLSO/February

LOUISVILLE FESTIVAL FEATURES GAY, LESBIAN, BISEXUAL FILMS

The opportunity to see movies with gay, lesbian and bisexual themes is provided by a film festival being held on the campus of the University of Louisville the first two weeks of February.

The Louisville Gay, Lesbian, Bisexual Film Festival will run on Tuesdays and Thursdays at Floyd Theater in the New Student Center at the U of L.

Admission is \$3.00, students & senior citizens \$2.00. Shows start at 8:00 pm.

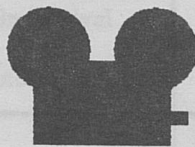
On February 4 and 6, "Salut Victor" and "International Sweethearts of Rhythm" will be shown. The features on February 11 and 13 are "If She Grows Up Gay," "Can't You Take A Joke," and "Looking For Langston."

"YER GIRLFRIEND" FEATURED IN FEBRUARY LEXINGTON CONCERT

Athena Productions presents the popular Louisville all-women rock band "Yer Girlfriend" in their first concert in Lexington since the release of their second album. The doors open at 9:00 p.m., Feb. 8, at the Lexington Unitarian Church. Tickets will be sold at the door for \$7.

TRULL & HIGBIE IN CONCERT

Teresa Trull and Barbara Higbie will present their reunion concert at Memorial Hall, University of Kentucky, on March 13. Full details will be in the next issue.



NEWS

LEADERS VOW TO PRESS ON WITH LOUISVILLE FAIRNESS CAMPAIGN

Continued from page 1

Fairness Campaign, told a crowd of about 50 supporters at a meeting at The Connection Complex on January 12. "We're still here, we're not going away."

The Fairness Amendment would protect citizens of Louisville from discrimination in employment, housing and public accommodations on the basis of sexual orientation. It was the subject of numerous public hearings held in December by the Human Relations Commission and the Board of Aldermen. It is patterned after similar laws in more than 100 communities nationwide.

The public hearings brought out the very worst elements of the religious community, who used

everyone from Moses to Paul Cameron to claim the proposal is evil. Such opposition indicates the ordinance is needed.

GAY/LESBIAN VIDEO FESTIVAL PLANNED AT TRANSYLVANIA U

Students at Transylvania University are presenting a Gay/Lesbian Video Fest, February 17-21. Films will be shown each evening at 7 o'clock in the Media Viewing Room of the basement of the University Library. The event is free. For more info, call Susan: 299-8167.

+ INTERNATIONAL NEWS NOTES +

Japan -- Occur, a gay rights group in Japan filed that nation's first suit claiming discrimination based on sexual orientation. The suit was filed against the city of Tokyo. There are very few gay political groups in Japan.

India -- The first Indian lesbian organization, Sakhi, was founded recently in New Delhi. Contact: Sakhi, P.O. Box 7032, Srinivas Puri, New Delhi 110065, India.

Germany -- A monument of pink granite in an inverted triangle has been placed on the Berlin Wall, to honor the gay victims of the holocaust. The inscription reads: "To be beaten to death, to be silenced by death: dedicated to the homosexual victims of the Nazis."

Argentina -- The Argentine Supreme Court refused to legalize the country's only gay group. Without legal status the group is unable to rent an office, open a bank account, accept donations, or conduct other routine business.

CLASSIFIED ADS

WANTED Remodeling Contractor, need estimate on framing, drywall, electrical, and plumbing work to finish one interior level of our home. Call David or Richard, evenings 273-6752.

Lesbians and AIDS -- AVOL now has literature on this and many other AIDS related subjects. AVOL: 254-2865.

VALENTINES

SHOOTING SAINT VALENTINE ARROWS of love for all the super member of GLUE. xxxooo your president, Jeff Gillispie

DOUGLAS, you are my one and only valentine. With love, Chuck

DEAR PEE WEE, Now that your days are free, maybe we can get together for a matinee. Captain Carl

AN AEROBIC VALENTINE FOR DAN M. -- from the Front Runners, you keep our hearts pumping!

TO TORA, FROM SUSAN, for 16 months of conjugal bliss.

VALENTINES -- Jeff G., Beth, Andrea, Curt, Tom, Chuck, Rob, Jesse, Will, and the whole GLUE gang - thanks for being here . . . in more ways than one. Happy Valentine Day, Cupid

POLITICAL NEWS

NUMBER OF GAY & LESBIAN CANDIDATES & VICTORS ON THE INCREASE

There may be much debate about what we call ourselves, but in New York City and Seattle, and in the Oregon and Texas legislatures, you can add a new title for lesbians and gay men: "honorable." This past year saw New York elect two openly gay city councilmen; Seattle elected the nation's first black, openly lesbian city council woman; and for the first time, good old boy networks in the Texas and Oregon House of Representatives had to negotiate with a gay man and a lesbian, respectively and respectfully.

While these are important gains for gay and lesbian rights, more are needed. Gay candidates lost in races for the Louisiana house, and city council seats in Cincinnati, Greece, N.Y., Tampa, Cambridge, Mass., and Houston.

There is no doubt that Tom Duane and Antonio Pagan will make a major difference in New York politics, where the gay men and lesbians have wrestled with the city power structure for years with very little representation. In Seattle, Sherry Harris changed how lesbian candidates are perceived, as a record turnout of over 150,000 voters propelled her into office. Gail Shibley was appointed to the Oregon House, where she announced her sexual orientation at her swearing-in ceremony. When she couldn't get a committee to hold hearings for the Oregon Lesbian and Gay Rights Bill, she held her own before the media, embarrassing House leaders who blocked it.

In Texas, Glen Maxey was sworn into the House by Gov. Ann Richards. After the ceremony, a House member rose to protest sitting next to Maxey. But now everyone wants to sit next to him, as he has become known as the leader of ethics reform in the scandal-plagued House where the speaker has been indicted.

[This article was supplied by Gay and Lesbian Victory Fund, a national organization that funnels funds into the election campaigns of gay men and lesbians. For more information about the fund, write: Gay and Lesbian Victory Fund, 1012 14th St. N.W., Suite 707, Washington, DC 20005.]

NEW ALTERNATIVE TO POPPERS POSES SERIOUS HEALTH RISK

A drug called ethyl chloride or Chlorethane that is being offered as a "safe" alternative to poppers, poses a serious danger. Use of the drug may cause death with absolutely no warning. It has been blamed for the deaths of two people in Minnesota.

There have been reports of this drug being used in bookstores and bars in Lexington. Occasionally, without warning, the drug simply shuts down a patient's heart or lungs or both, completely and all at once.

REEL WORLD STRING BAND

BENEFIT CONCERT

Saturday, February 29
8:00 p.m. (doors open at 7:30)

Proceeds to help Linda Laporte
acquire a service dog
from Paws with a Cause
and
support Pride Week 1992

Sliding Scale Admission
\$7 - \$6 - \$5

B. Y. O. B.

Unitarian Universalist Church
3564 Clays Mill Road
Lexington, Kentucky



News Reader's Survey

This survey has two purposes: to let us know who the readers of the "News" are and to find out what you think the gay and lesbian community in the Bluegrass needs. Please fill this form out and mail it to GLSO, P.O. Box 4183, Lexington, KY 40544.

1. Your gender: male female 2. city/county you live in _____
3. age: 15-25 26-35 36-45 46-55 56-65 66-75 76 and older
4. educational level: high school some college college degree graduate degree
5. race: a. African American, b. Asian, c. Hispanic, d. white, e. Native American
6. income level: <\$10,000; \$10,000-\$19,999; \$20,000-\$29,999; \$30,000-\$39,999;
\$40,000-\$49,999; \$50,000-\$59,000; \$60,000-\$69,000; > \$70,000
my occupation is _____
7. If you live in the Bluegrass area, how many years have you been here? _____
8. In what state or nation were you born? _____
9. How do you describe your sexual orientation? a. gay male, b. lesbian, c. bisexual
d. that other category _____
10. Number of people in your household? _____
11. What is your relationship status? a. single-not dating, b. single-dating,
c. long-term relationship, d. married/opposite sex, e. union/married, same sex
12. If you have children, how many? _____
13. How "out" or open are you about your sexual orientation? a. not open at all,
b. open with a few friends, c. open with a few friends and family,
d. open in lesbian/gay circles, e. open with everyone,
g. "flaming in yer face"
14. At what age did you realize your sexual orientation? _____
15. At what age do you consider that you came out? _____
16. Have you ever been verbally harassed because of your sexual orientation?
a. yes, b. no In Lexington? _____ Elsewhere? _____
17. Have you ever been physically attacked because of your sexual orientation?
a. yes, b. no In Lexington? _____ Elsewhere? _____
18. Have you ever been discriminated in housing, insurance, or employment because
of your sexual orientation? a. yes b. no In Lexington? _____ Elsewhere? _____
19. Do you practice safer sex methods in every instance? a. yes, b. no
20. Are you in a monogamous relationship? a. yes, b. no
21. Have you been tested for HIV? a. yes, b. no. Are you: a. HIV+ b. HIV-
22. I socialize mostly with: a. gay men b. lesbians c. straight men d. straight women
e. bisexuals f. a mixed crowd
23. What religion, if any, do you identify with? _____
24. Are you active in an organized group of that religion? a. yes b. no
25. Do you consider the overall environment of Lexington to be
a. very gay-negative b. gay-negative c. neutral d. gay-positive e. very gay-positive

GLSO READERS SURVEY

26. How are you registered to vote? a. not registered b. Democrat c. Republican
d. other e. independent

27. Have you voted in the past four years? a. yes b. no

28. Are you more likely to patronize a business you perceive as "gay friendly?"
a. yes b. no

29. List some Lexington business you consider to be particularly "gay friendly."

30. List some Lexington business you consider to be "gay hostile".

31. Do you use a computer? a. yes b. no With a modem? a. yes b. no

32. Do you travel frequently out side of the Lexington area? a. yes b. no

33. Where do you get the GLSO NEWS? a. in the mail b. pick it up at _____

34. How frequently do you go to nightclubs or bars? a. several times a week
b. once a week c. a few times a month d. a few times a year e. never

35. Is there any kind of gay/lesbian/bisexual group or organization that you would
like to see formed in Lexington? _____

36. What do you think is Lexington's best:

a. lesbian-oriented nightspot _____

b. gay male-oriented nightspot _____

c. straight-oriented nightspot _____

d. restuarant _____

e. entertainment spot _____

f. pizza place _____

g. place to meet gay men _____

h. place to meet lesbians _____

i. place to meet bisexuals _____

j. drag queen _____

k. music/record store _____

l. local music group _____

m. bookstore _____

n. florist _____

o. place to buy men's clothing _____

p. place to buy women's clothing _____

q. gay/lesbian neighborhood _____

r. bartender _____

+ o + o + o + o +

Please mail this completed survey to: GLSO, P.O. Box 4183, Lexington, KY 40544