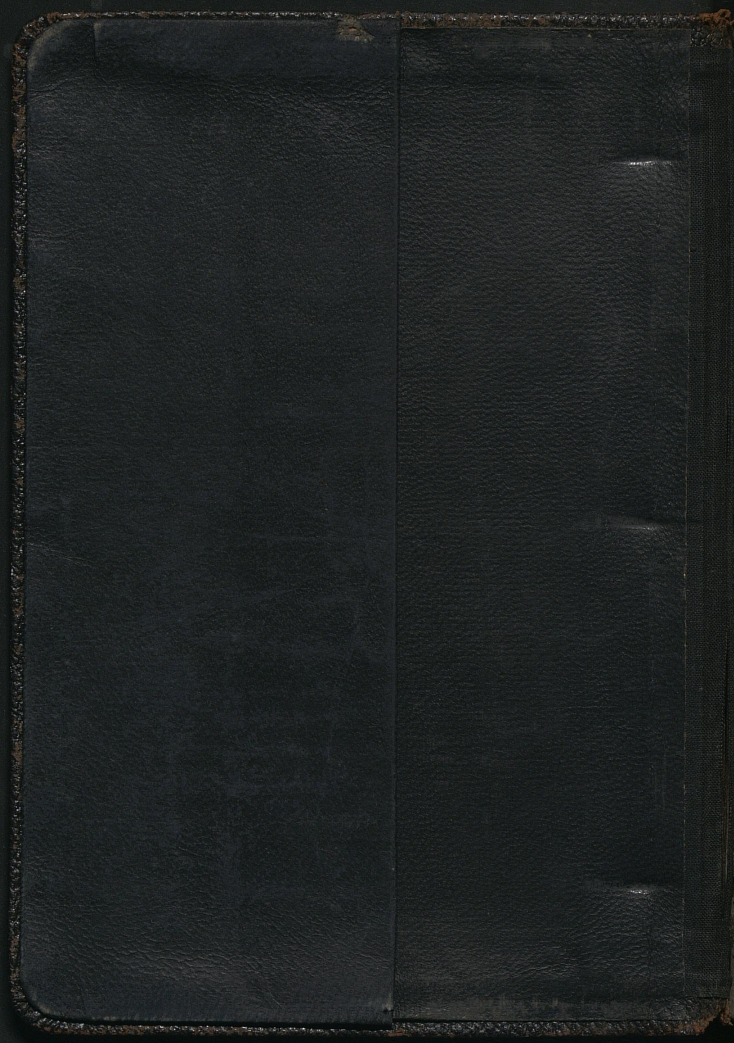


PHOTOGRAPHS
OF
TWO YEARS IN PERMISSION
BY
NORMAN KOHLHEPP





"LES VIEILLARDS"



THE OLD FRENCH RESERVES WHO
DID MORE THAN THEIR
SHARE.



X X X
GRASS
CAMOUFLAGE
SCREEN

"75's" IN WOODS AT VILLERS-EN-PRAYÈRES
READY FOR CASONS TO TAKE AWAY AT NIGHT



FERGIE →

AT COURLANDON (VESLE RIVER)
"LES VEILLARDS" ALWAYS READY TO STOP
WORK TO HAVE THEIR PICTURE TAKEN.



SOME 250 M.M. SHELLS.
"SAM" PROYN- "NUMPS" - ?



X
WROTE IN
MY DIARY
FOR 1 HOUR
HERE

SMALL TRAIN TO FEED BATTERIES
NEAR CHAUDARDES (AISNE RIVER)



DIRT TRACK
WORN BY
CASSONS

DUG-OUTS ON SIDE OF HILL NEAR
GUN IMPLACEMENTS - (VAILLY)



GASLINE ENGINE HAULING
TRENCH TIMBER - ALONG AISNE RIVER
NEAR VAILLY.



CAMOUFLAGE OVER LARGE
HOWITZERS IN PICTURE BELOW



← MAN
STANDING ON
LOADING BOX
X
BREECH OF
HOWITZER

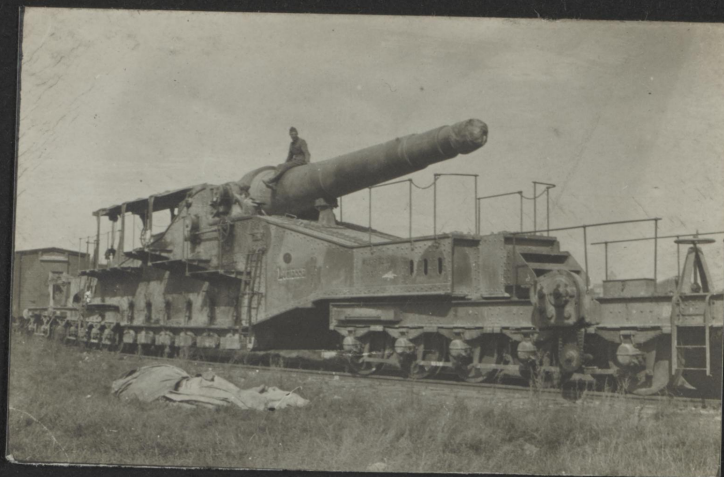
"THE GUN CREW & 'HUMPS'"



CAMOUFLAGED
GUNS →
ON HILLSIDE

← STEEL FOR
DUG OUTS

THE SOUP KITCHEN
BROUGHT UP FROM REAR FOR NOON MEAL



325 M.M. GUN AT
BAZOSCHES (VESLE RIVER)



CAMOUFLAGED ENGINE THAT
HAULED "325" GUN.



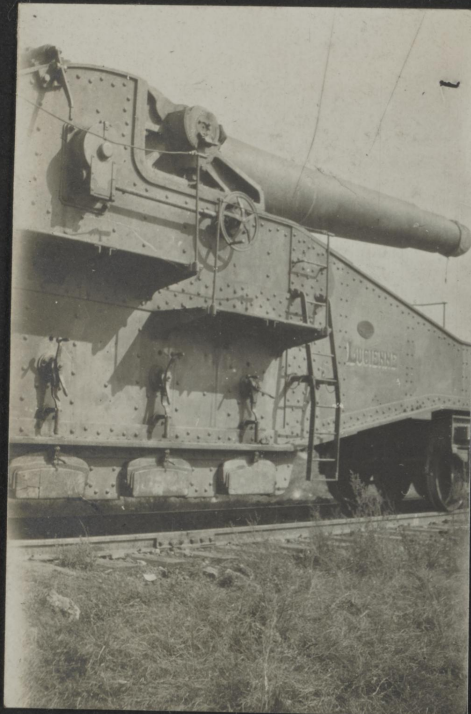
TAKEN FROM TOP OF GUN SHOWING
CARS THAT CARRIED THE AMMUNITION

X
ANOTHER ONE

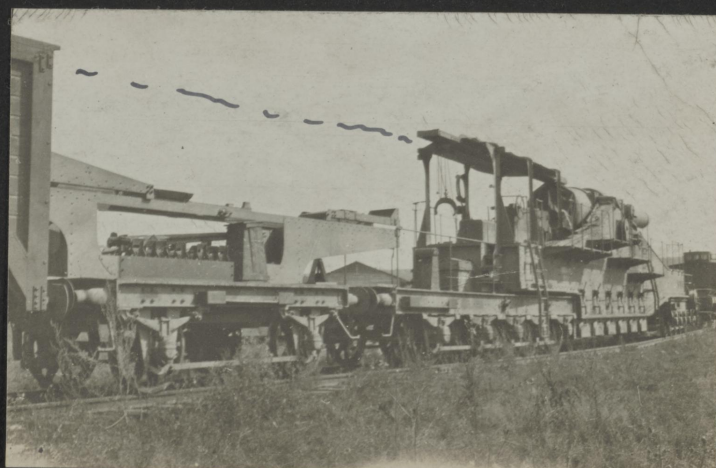


HAND
WORKED JACKS

SHOWING HOW GUN CARRIAGE IS
BLOCKED UP OFF THE WHEELS WHEN FIRING



"A BAD PLACE"



----- SHELLS ARE CARRIED ON A LITTLE
HOIST & OVERHEAD TRACK FROM CAR TO GUN.



GUARD ON BRIDGE
AT PONT-ARCY



BRIDGE INSTRUCTIONS



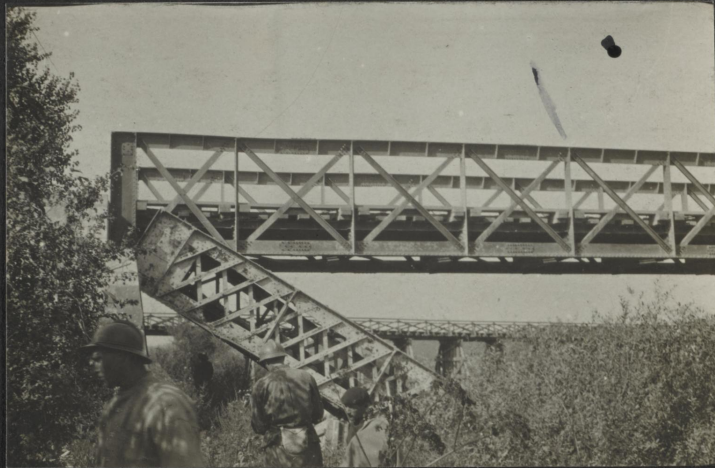
"A POOR JOB"
GUARD ON BRIDGE AT
VAILLY. - WAS SHELLLED
ALMOST DAILY.

VAILLY →



NEW BRIDGE OVER AISNE RIVER
VAILLY

WE HAD
JUST BEEN →
SWIMMING



BRIDGE IN
← ABOVE
PICTURE

"STEEL REPLACED BY STEEL"



"CHEMIN DES
DAMES" UP
← ON PLATEAU

CAMOUFLAGED ROAD TO VAILLY
GERMAN BALLOONS COULD BE SEEN UP ON HILL
IN THE DISTANCE



"POILUS" LOOKING FOR THEIR FRIENDS
GRAVE YARD AT VAILLY (AISNE)

BATTERIES
IN THESE
TREES →



HUNDREDS OF
WOODEN CROSSES!

OLD
BARBED
WIRE →



← WIRE
ENTANGLEMENTS

PART OF THE AISNE BATTLEFIELD
VAILLY IN THE DISTANCE AT
FOOT OF HILL.



"FERGIE"
"HEINIE"
"BOB"

"FUSSING"
HOSPITAL AT MONT NOTRE-DAME



"FERGIE" SHOWING 'EM HOW.
AREOPLANE WATCH AT HOSP. MONT NOTRE-DAME



A MACHINE GUN OUTFIT



A FUNERAL AT
MONT NOTRE-DAME



REMAINS OF AN
OLD CASTLE 1200 A.D.
IN FOREST OVERLOOKING
BRAISNE



↓ "ROUTE GARDEE"
SIGNS



KID HALL BOB BROWNING NUMPS
AND SOME OTHER SINAGALESE



A CORDUROY ROAD
NEAR BRAISNE



UNLOADING THE CORDUROY



(SEE SMALL PHOTO ON OTHER PAGE)

ORCHARDS RUINED BY GERMANS
WHEN RETREATING



DID NOT HAVE TIME ENOUGH TO
CUT THEM ALL DOWN - SO DID THIS



FRUIT TREES CUT DOWN.





"DUSTY?"

THIS WAS SNAPPED FROM A MOVING TRUCK
HOLDING ON WITH ONE HAND & LEARNING OUT
WITH CAMERA IN THE OTHER.



HOLES →
IN WALL
FOR RIFLES

A WALL THAT CAUSED A
LITTLE FIGHT.



ANOTHER WALL
NOTE STONES REARRANGED ON TOP
FOR RIFLE HOLES.



ARMORED ANTI-AIR CRAFT "75"
MEN'S COATS SPLOTCHED WITH
CAMAFLAUGE



HOODS TO HELP CAMAFLAUGE
X GRASS MAT OVER NEW DIRT FROM
NEWLY CONSTRUCTED DUG OUT



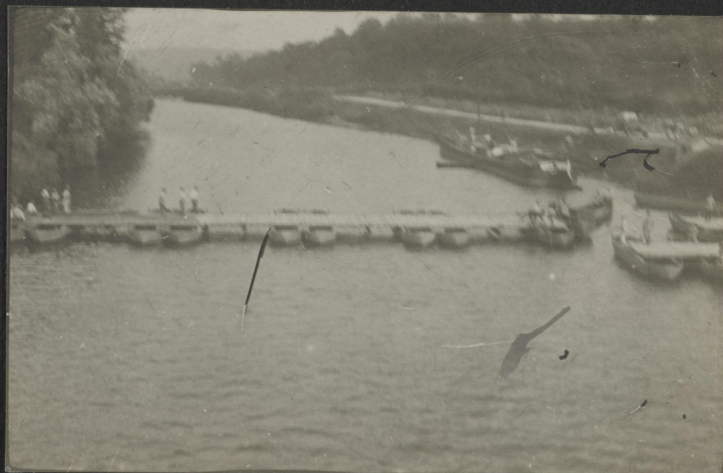
MACHINE GUNS & MORTARS
"ENROUTE"



TYPICAL "ABRI"



GERMAN "PILL BOX"
SOLID CONCRETE MACHINE GUN HOUSE



FRENCH THROWING PONTOON BRIDGE
ACROSS AISNE RIVER AT VENIZEL



"DUSTY TROOPS" GOING TO THE
FRONT - BOUCY-LE-LONG



MORROCCANS



"ALWAYS HAPPY"



PUBLIC SQUARE
SOISSONS



NATIONAL HIGHWAY
BRAISNE TO SOISSONS



OPEN AIR SANITATION



CHURCH HIT BY
SHELL

BOB ALLEN
LOOKING
AROUND



MAIN BRIDGE-SOISSONS



"WHERE THE AISNE RIVER RAN RED!"
SOISSONS



FACTORY ACROSS RIVER FROM SOISSONS
TERRIBLE FIGHTING HERE



FRENCH "NON-COM" SCHOOL
FERME DE CHAVIGNY OCT. 7, 1917



"WOULD BE" SERGEANTS



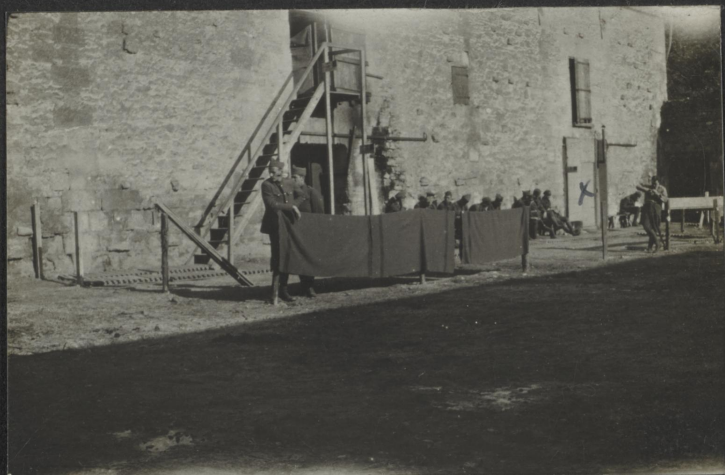
NUMPS
OUTSIDE OF OUR OXEN STALL
HOME



"NOON HOUR"



THE STUDENT BODY(?)



FENCED OFF FROM THE CATTLE



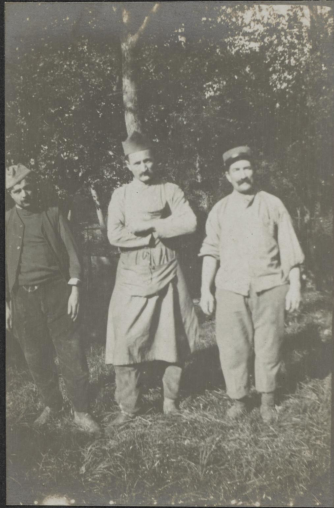
TOWN HALL - CHATEAU THIERRY
CONVOY OCT, '17.



"A MAN-WOMAN"
REAR OF CHATEAU AT
CHAVIGNY

DIRECTION
OF OUR
BARN

→
CHARLIE
CHAPLIN



OUR COOKS



AFTER A DAY IN THE
ROCK QUARRY.

LAFAYETTE ESCADRILLE
NEAR CHAUDUN



"MAC" - "WIT" WRIGHT.
LUFBERRY'S MACHINE (HE BROUGHT DOWN
2 BOSCHE THAT MORNING)



MECHANICS LEAVING AS
HE STARTS OFF.



"REPOS"



"CLAYT" GRANDY



"ROCKWELL" (CIN.O.)
SIDE OF HIS MACHINE



"LUFBERRY"
ONE BOSCHE - RADIATOR HOT
FORCED TO COME BACK - SAID
HE COULD HAVE GOTTEN MORE.



"LUFBERRY" STARTING AGAIN



"SPADS"
OUT READY FOR A HURRY CALL



HANGARS

"CENTRE D'INSTRUCTION AUTOMOBILE"
(OFFICER'S SCHOOL) MEAUX, DEC. 8, 1917



MAIN ENTRANCE, "ART" RALSTON



A BUNCH BACK OF
THE BARRACKS





x
Tom
CARROTHERS

ENROUTE - SCHOOL TO AUTO PARC.
(DIRTY CLOTHES ONLY)



MELTING THE ICE AND
CRANKING 'EM UP.



LAST DAY OF ORAL EXAMS!
BEAUCOUP "BENEDICTINE" - BICYCLES - HOT MOTOR



"FORCED TO LAND"



"A LITTLE UNSTEADY BUT
WE PULLED IT OVER"



"NO! YOU TRY IT I'M AFRAID
IT'LL KICK!"



THE CROWD THAT WATCHED



"WANTED - CANDY!"



CONVOY PRACTICE



"HOTEL DE VILLE" - MEAUX
CATHEDRAL IN DISTANCE



PROMENADE ALONG THE RIVER



CATHEDRAL FROM PROMENADE





THE OLD MILLS - (PART OF BRIDGE BLOWN
UP BY BRITISH - 1ST YR. OF WAR)



CONVOY PASSING OYER



x BOAT HOUSES FOR THE
VILLAGE WASH WOMEN.





"HIS FIRST SPRINGFIELD"



"DIRTY & COLD"



REAR OF THE OLD MILLS





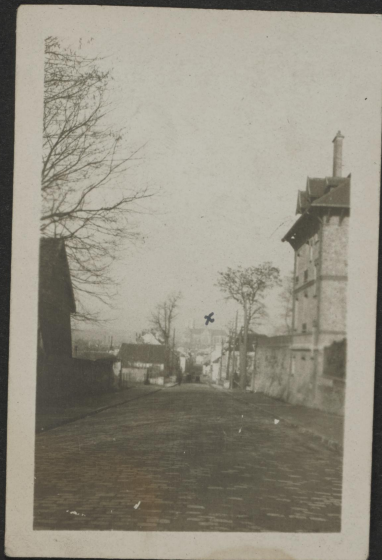
NOTE OLD CONSTRUCTION



BRIDGE OVER CANAL



A "HE-WOMAN" SWEARING AT THE
ICE IN THE CANAL



STREET TO TOWN
FROM SCHOOL
X(CATHEDRAL)



SIDE OF THE
CATHEDRAL AT MEAUX



FRONT VIEW.



ONE HOUR TO GET WARM!
PRACTICE CONVOY



FROSTED TREES
REAR OF SCHOOL



ABBHEY AT PONT ST. MAKENCE



MAIN
ENTRANCE →

FRONT VIEW



CLOCK
x SUN
DIAL

→

WASH TROUGHS INSIDE OF COLUMNS



LEFT WING



RIGHT WING



"PACK UP! BE READY TO LEAVE IN AN HOUR!"



BREAKING UP SCHOOL MAR 25, 1918
(SEE FRENCH ORDERS OF THE DAY.)



TWO AIRPLANE BOMBS!



LOADING THE WRECKED CARS



"FERGIE" & A WOUNDED RENAULT.

CAMP AT FERME DE L'EPINE
NEAR VIC-SUR-AISNE APRIL 1ST, 1918



OUR PERFECT LITTLE VALLEY
BACK OF FERME DE L'EPINE



"ART" RALSTON - "STEWY" ANDREWS
"STEWY" PRINCE - "HUMPS"



AND "SAM" MOSS



A FRENCH BOMBING PLANE THAT
LANDED AT NIGHT.



Y.M.C.A. SUNDAY MORN.



A COMMON OCCURRENCE



THE PIANO-VAUDEVILLE TRUCK "JIM" CRAIG



GET IN LINE - "AW! LOOSEN UP
GIMME A LITTLE MORE."



"GEE! BUT THAT PIANO SOUNDED GOOD!"



FRONT OF FERME DE L'EPINE
SHOWING TRUCKS PARKED ACCORDING TO
COMPANIES

AISNE DEFENSIVE
EVACUATION OF SOISSONS

MAY 27-JUNE 5, 1918



REFUGEES NEAR BELLEAU WOODS
WE CAMPED AT GIVRY MAY 29-



ONE OF THE MANY THINGS LEFT BY
THE REFUGEES.



CAMP AT JOUARRE MAY 30-JUNE 4, '18
ABOVE LA FERTE SOUS JOUARRE



A COMMON SIGHT.



"155" LONG



ONE WEEK IN A HAY WAGON
47. JOUARRE





BOXES OF
← "75's"
WE UNLOADED

SMALL FRENCH TANKS GOING UP
NEAR DORMANS



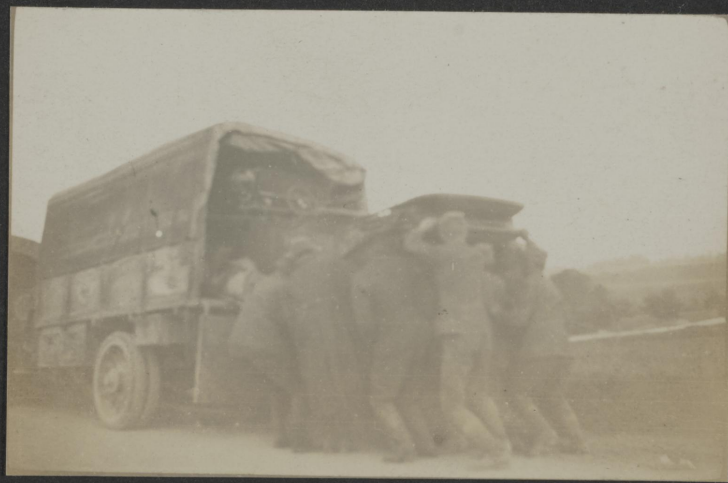
HIS NIBS THE MAJOR!



NO! JUST AN ACCIDENT



↑ TRUCK RADIATOR
SOME MORE SMALL ONES



"STEALING A DRIVERLESS FORD"
(SPARE PARTS NEEDED)



GERMAN PRISONERS CAMP.

CAMP AT LA CHAPELLE SUR CRECY

JUNE 4, - AUG 4, 1918



FRONT OF CHATEAU
"CRECY-EN-BRIE"



OUR
ROOMS

↑ LA BIBLIOTHÈQUE



RIGHT END OF CHATEAU



COMPANY COMMANDERS
"REMORQUES" & TRAILERS



CHURCH & ROAD IN FRONT
OF CHATEAU



REMAINS OF MORT IN
THE OLD GARDEN.



PART OF THE GARDEN



A NEW 2ND LT.



IN THE PARC-FRONT
OF CHATEAU



FRENCH
← TROOPS

THAT LONG HAUL FROM PARIS (6 MI. OUT)
TO CHATEAU THIERRY.



DISABLED →

AMERICAN
← TROOPS

"THE VILLAGE BELLE"



"155 M.M." GUN ON 5-TON PIERCE ARROW.



"MORT" WILKINSON (BUFFALO N.Y.)



VIEW FROM HILL ABOVE CHATEAU



"THE OLE SWIMMIN' HOLE"



"MA" STURGIS "DON" PERCY "MORT" "HUMPS"
IN THE BIBLIOTHÉQUE



"JIM" CRAIG'S
HOME →

MADAME LA MARQUISE DE MONTAULT
"MORT" & TWO COUCH LIZARDS "HUMPS"

CHATEAU THIERRY

BARRICADES →
ACROSS STREET



ROAD NORTH TO SOISSONS



THE STATION ON THE HILL



A DEAD "BOSCHE"

MAY-EN MULTIEN. (NORTH OF MEAUX)



NINE-5 TON PIERCE ARROW TRUCKS (FRENCH)
BOMBED WHILE UNLOADING AMMUNITION.
AT NIGHT. -



OUR TRUCKS WERE DRIVEN OUT
AND SAVED.



SMALL DONKEY THAT
CARRIED MACHINE GUN AMMUNITION.



OUR
← TRUCKS

"THEY'RE GOING THRU TO PARIS"
RESERVE TRENCHES NORTH OF LA FERTE SOUS JOUVILLE
(10 MILES IN THE REAR)



SETTING UP A "155" LONG



A GERMAN "77"



RUSHING UP THE GUNS!



GERMAN PRISONERS
FROM AROUND CHATEAU THIERRY.



SOMME DEFENSIVE
AUG 8-18, 1918



TANKS ABANDONED BY GERMANS
SOUTH OF MONTDIDIER.



THE WHITE DUST OF PICARDIE



GERMAN DUGOUTS

Somme DEFENSIVE



NATIONAL HIGHWAY AMIENS TO MONTDIDIER
TREES TORN BY SHELLS



ANOTHER PART OF ROAD



GERMAN DUGOUTS



AN OLD WIDOW WHO
WATCHED THE GERMANS
PASS THRU TOWN.



TOWN CLOCK - VILLERS-COTTERETS
DISPLAY OF GUNS (X) ON PUBLIC
SQUARE TAKEN BY FRENCH
COLONIALS FROM BOSS.



OUR
ROOM

MADAME COUSTEAU
OUR LANDLADY AT ETROY.

PICTURES PRINTED FROM FILM TAKEN
FROM DEAD GERMAN OFFICER'S CAMERA



TANK

TANK

TWO PICTURES ON ONE
NOTE TANK & SOLDIERS ADVANCING



SOLDIERS ADVANCING



1.0 SERIES
DURABLE
506
MFG. CO.
ASHTON, MD.



© 1906 J. P. LEAF
PATENTED FEB. 22, 1906
No. 506
IRVING CITY MFG. CO.
KANSAS CITY, MO.

