

JUNE 16-AUGUST 9

BULLETIN OF
The University of Kentucky

1952

Summer Session

LEXINGTON

BOARD OF TRUSTEES

1952

Ex Officio Members

Lawrence W. Wetherby, Governor
Wendell P. Butler, Superintendent of Public Instruction
Ben S. Adams, Commissioner of Agriculture

From the State Board of Agriculture

George M. Cheek, Frankfort, 1951
Dr. W. M. Coffee, LaCenter, 1949
Carl Dempewolfe, Henderson, 1950

Members at Large

Paul M. Basham, Hardinsburg.....	1953
Mrs. Paul G. Blazer, Ashland.....	1950
John C. Everett, Maysville.....	1951
Harper Gatton, Madisonville.....	1953
R. P. Hobson, Louisville.....	1950
J. Woodford Howard, Prestonsburg.....	1951

Alumni Members

Herndon J. Evans, Pineville.....	1953
Guy Huguelet, Lexington.....	1951
H. D. Palmore, Frankfort.....	1950

Officers of the Board

Lawrence W. Wetherby, Chairman
Frank D. Peterson, Secretary and Treasurer

Executive Committee

Guy Huguelet, Chairman
John C. Everett
Harper Gatton
R. P. Hobson
H. D. Palmore

BULLETIN OF THE

University of Kentucky

LEXINGTON



Summer Session, 1952

June 16 to August 9

Published monthly, January to September inclusive, by the University of Kentucky, Lexington. Entered as Second-Class Matter at the Post Office, Lexington, Ky., under the Act of August 24, 1912.

Vol. 44

APRIL

No. 4

CALENDAR FOR 1952 SUMMER SESSION

June 16	Monday, 7:45 a.m.— Classification tests and physical examinations for all new students
June 17	Tuesday, 8:00 a.m. to 4:30 p.m.— Registration and classification of all students, according to an alphabetical schedule
June 18	Wednesday — Class work begins
June 21	Saturday — Last date one may enter an organized class for the summer session
June 28	Saturday — Last date one may drop a course without a grade
June 27, 28	Friday and Saturday — Period for filing applications for degrees
July 4, 5	Friday and Saturday — Independence Day holiday
August 8	Friday — Summer Session Commencement
August 9	Saturday Noon — End of Summer Session

REGISTRATION SCHEDULE FOR 1952 SUMMER SESSION

June 16 — Monday, 7:45 a.m.— All new students, except those entering the Graduate School, will report to Memorial Hall for classification tests and physical examinations. These must be completed before registration.

June 17 — Tuesday, 8:00 a.m. to 4:00 p.m.— Registration and classification of all students, according to the following alphabetical schedule:

Tuesday Forenoon	Tuesday Afternoon
8:00 to 8:50—Ke through Ni	1:30 to 2:20—Clo through Ge
9:00 to 9:50—No through Si	2:30 to 3:20—Gi through Ka
10:00 to 10:50—Sj through Z	3:30 to 4:00—Miscellaneous
11:00 to 11:50—A through Cli	A through Z

June 18—Wednesday, 7:00 a.m.—Class work begins

CONTENTS

	Pages
Calendar	3
Administrative Organization	4
Part I. General Information	5
The Summer Session for 1952	7
Accredited Relations	8
The Environment of the University	8
Student Union Building	9
Placement Service	10
Recreational Activities	11
The University School and Student Teaching	12
Length of Session	12
Admission	12
Numbering of Courses	15
Student Load	15
Fees	15
Refunds	15
Late Registration	15
Marking System	16
Room and Board	16
University Health Service	18
Requirements for Graduation	18
College of Arts and Sciences	19
College of Agriculture and Home Economics	22
College of Engineering	24
College of Law	24
College of Education	25
College of Commerce	27
College of Pharmacy	28
Graduate School	28
Part II. Schedule of Classes	31

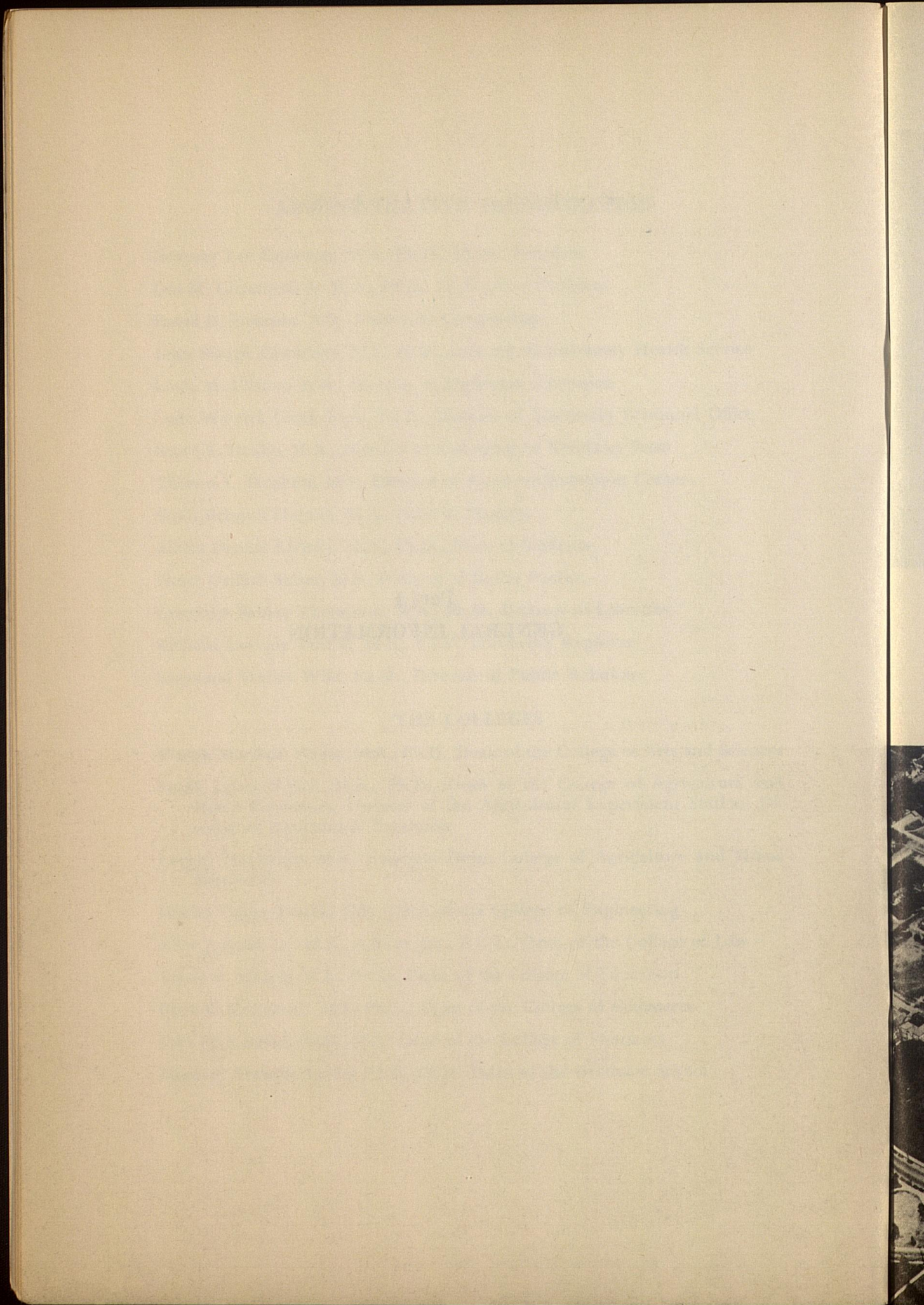
ADMINISTRATIVE ORGANIZATION

Herman Lee Donovan, M.A., Ph.D., LL.D., President
Leo M. Chamberlain, M.A., Ph.D., LL.D., Vice President
Frank D. Peterson, A.B., University Comptroller
John Sharpe Chambers, M.S., M.D., Director of University Health Service
Louis M. Clifton, M.A., Director of University Extension
Lysle Warrick Croft, M.A., Ph.D., Director of University Personnel Office
Bruce F. Denbo, M.A., Director of University of Kentucky Press
Thomas L. Hankins, M.S., Director of Northern Extension Center
Sarah Bennett Holmes, M.A., Dean of Women
Albert Dennis Kirwan, M.A., Ph.D., Dean of Students
Elmer Griffith Sulzer, M.S., Director of Radio Studios
Lawrence Sidney Thompson, M.A., Ph.D., Director of Libraries
Richard Lovejoy Tuthill, M.A., Ed.D., University Registrar
Raymond Wesley Wild, Ph.M., Director of Public Relations

THE COLLEGES

Martin Marshall White, M.A., Ph.D., Dean of the College of Arts and Sciences
Frank James Welch, M.A., Ph.D., Dean of the College of Agriculture and Home Economics, Director of the Agricultural Experiment Station, Director of Agricultural Extension
Levi J. Horlacher, M.S., Associate Dean, College of Agriculture and Home Economics
Daniel Voiers Terrell, C.E., Dean of the College of Engineering
Elvis J. Stahr Jr., M.A., A.B. in Jur., B.C.L., Dean of the College of Law
Frank G. Dickey, M.A., Ed.D., Dean of the College of Education
Cecil C. Carpenter, M.S., Ph.D., Dean of the College of Commerce
Earl Platt Slone, Ph.G., M.S., Dean of the College of Pharmacy
Herman Everette Spivey, M.A., Ph.D., Dean of the Graduate School

Part I
GENERAL INFORMATION



GENERAL INFORMATION

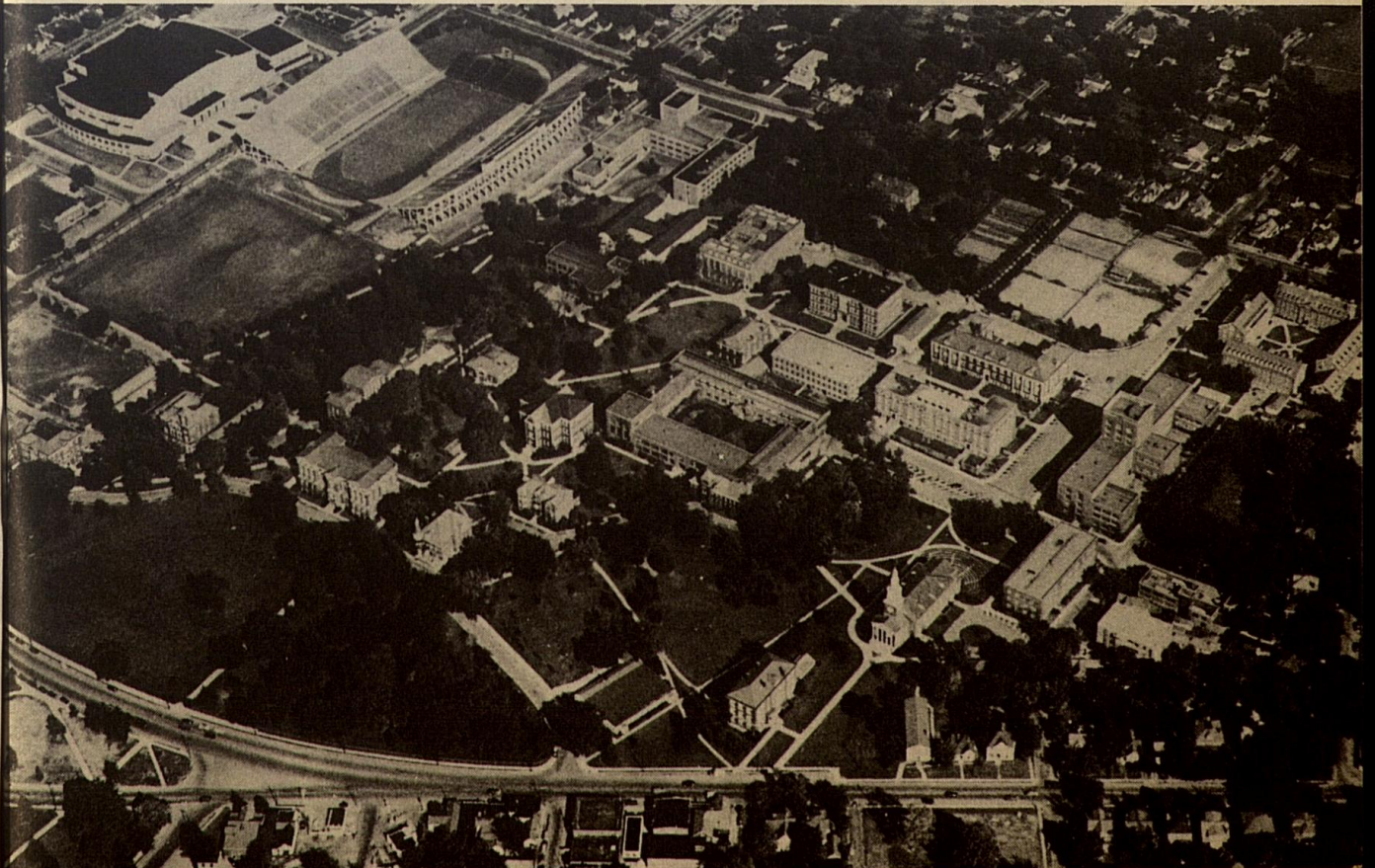
THE SUMMER SESSION FOR 1952

The course offering during the 1952 Summer Session will be almost as extensive and varied as during the regular school year. As indicated in a later section of this bulletin, courses will be offered for graduates and undergraduates in the College of Arts and Sciences, the College of Agriculture and Home Economics, the College of Engineering, the College of Law, the College of Education, and the College of Commerce.

In particular, the needs of the following groups have been kept in mind in planning the Summer Session program for 1952:

1. The high school boy or girl who graduates this spring and wishes to begin college work without delay.
2. The veteran who is eligible for educational benefits under Public Law 16 or 346. It will be desirable for the veteran recently discharged to begin his college studies at the earliest date possible. Those already enrolled will find it desirable to continue in school through the summer, in order that graduation may be achieved with the least loss of time.
3. Teachers, principals, supervisors, and superintendents who wish to further their preparation for educational work. The in-service edu-

AERIAL VIEW — This is how the U.K. campus looks from the air.



cation of teachers lagged greatly during the war, and it is expected that hundreds of teachers and other school officials will now wish to continue their summer studies.

4. All students, women and men, who are in college and wish to accelerate their programs of study.
5. Other persons who need certain courses to advance in their specific vocations, and to meet the requirements of the postwar economy.

Over and above its program of liberal education, the University Summer Session provides numerous opportunities for persons to prepare for specific occupations. The extent of the opportunities is indicated by the following vocational areas in which summer courses will be offered; Industrial Chemistry, Journalism, Medical Technology, Pre-Medicine, Pre-Dentistry, Pre-Nursing, Music, Library Science, Public Service, Art, Bacteriology, Geography, Geology, Psychology, Radio Arts, Social Work, Sociology, Agriculture in its various phases, Pre-Forestry, Pre-Veterinary, Home Economics, Architectural Engineering, Aeronautical Engineering, Civil Engineering, Communications Engineering, Electrical Engineering, Mechanical Engineering, Metallurgical Engineering, Mining Engineering, Law, Elementary Teaching, High School Teaching, Educational Supervision and Administration, General Business, Commerce-Law, Industrial Administration, and Secretarial Work.

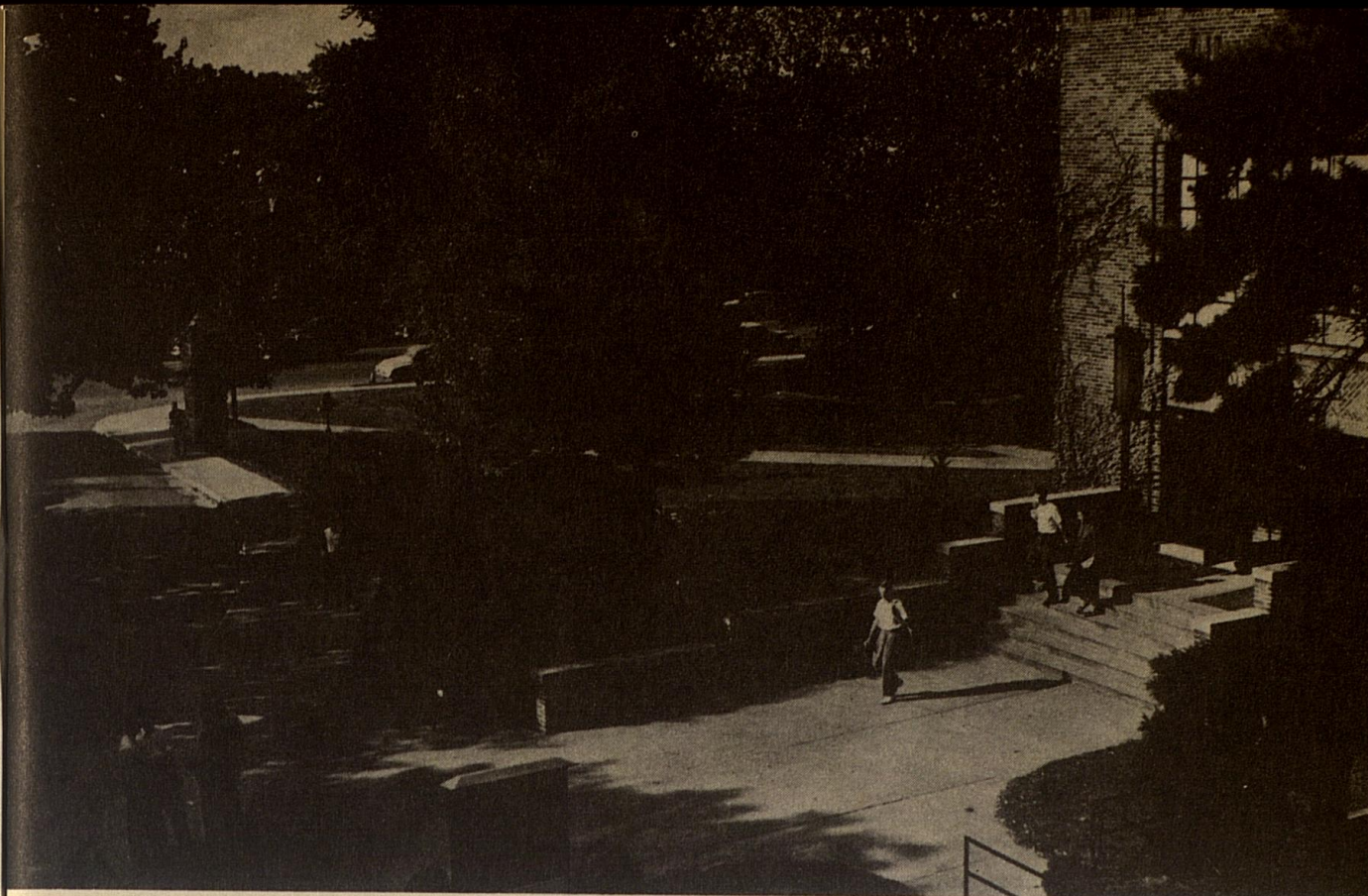
ACCREDITED RELATIONS

The University of Kentucky is a member of the Southern Association of Colleges and Secondary Schools and the Kentucky Association of Colleges and Secondary Schools. It is accredited in its respective colleges or departments by the Association of American Law Schools, the American Association of Collegiate Schools of Business, the American Association of Schools and Departments of Journalism, the American Library Association, the Association of Research Libraries, the National Association of Schools of Music, the Engineer's Council for Professional Development, the American Chemical Society, the National Association of Schools of Social Administration, the American Council on Pharmaceutical Education, the American Association of Colleges of Pharmacy, the American Association of Colleges for Teacher Education, and the National University Extension Association.

THE ENVIRONMENT OF THE UNIVERSITY

The University of Kentucky is located in Lexington in the center of the Bluegrass, a delightful country of scenic beauty and of great historical interest.

Many of the famous horse farms, some individual establishments containing more than a thousand acres, are open to visitors throughout the year. These farms, with their broad pastures, sparkling streams, woodlands, and paved roads provide Fayette County with a system of parks which is unique. Elmendorf; Walnut Hall; Calumet, home of Citation; Castleton; Hamburg Place; Dixiana; and Coldstream, are among the beautiful horse farms in Fayette County open to visitors.



SUMMERTIME — A campus scene between classes.

Points of particular interest in Lexington, other than the nearby farms, are Ashland, the home of Henry Clay; General John Hunt Morgan's home; the home of Mary Todd, wife of Lincoln; the vast tobacco warehouses; the Keeneland Race Track; the track of the Kentucky Trotting Horse Breeder's Association; the United States Veterans' Hospital; and the U. S. Public Health Service Hospital.

Within a relatively short distance from Lexington are Frankfort, the Capital City, with its many historical features; Herrington Lake; Shakertown; Fort Harrod and its adjacent Pioneer Cemetery; the Old Kentucky Home; the Palisades of the Kentucky River; and many other points of historical and scenic interest.

STUDENT UNION BUILDING

The Union Building is the center of student activity on the campus. Various rooms are available for the enjoyment of students during leisure hours. One may meet friends or read leading magazines and newspapers in the Great Hall; engage in billiards or pingpong in the Game Room and play cards, checkers, or chess in the Social Room.

For the convenience of students, the building maintains an information desk, check-rooms, telegraph and telephone service, a modern barber shop, a cafeteria serving foods of quality, an attractive snack grill, conference rooms and comfortable lounges.

The Student Union Board is eager for all University students to take advantage of the services and facilities of the building.

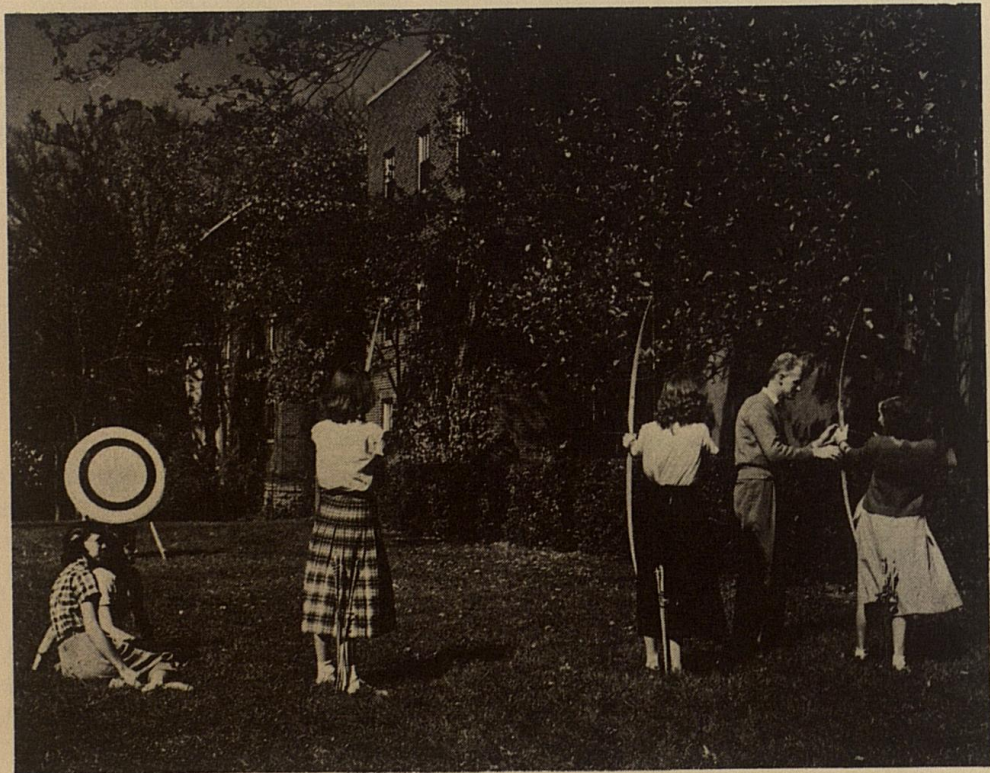
PLACEMENT SERVICE

There is a constantly growing demand for the services of the graduates of the University of Kentucky. Placement services are maintained by several colleges on the campus and every attempt is made to procure for the students and for the graduates of the University the type of employment which will enable each one to achieve the best results.

In the College of Commerce is the Senior-Commerce Employment Association which is self-supporting and is headed by a permanent secretary. The Association has been very successful in placing graduates with nationally operating industrial concerns, credit investigating and reporting companies, wholesale houses, banks, insurance companies, chain store companies, governmental agencies both federal and state, and in teaching positions. These positions included secretarial work, accounting, advertising, selling, personnel, and statistical work.

The Teacher Placement Bureau of the College of Education is designed to assist in the placement of superintendents, principals, and teachers. Each student in attendance at the University who desires a teaching position should

ARCHERY—A pleasant pastime for Summer Session Students.



FUN FOR ALL — Swimming, tennis, and golf are among the summer recreational activities at U.K.



register with the Placement Bureau, Room 115, Education Building. Superintendents and college administrators who desire capable teachers should write directly to the bureau for recommendations and credentials.

The long list of successful Alumni of the College of Engineering is indicative of its reputation for educating men for careers in the engineering and industrial world. Its graduates are continually in demand and contact between industries and the College is maintained through an Employment Placement Service. This service is considered as part of the College's obligation to its students and every effort is made to give each graduate the opportunity for a position of his preference.

RECREATIONAL ACTIVITIES

The summer months are vacation and recreation time. Provision is made for Summer Session students to participate in numerous recreational activities and to learn the fundamental skills and techniques involved. The Physical Education Department is offering recreational courses for men and women students in archery, badminton, tennis, social and folk dancing, volley ball, bowling, swimming, camping, and intramural sports. This is an opportunity for every summer session student to receive expert instruction in any or all of the above mentioned activities. If you are a novice it is your chance to learn; if an expert performer, it is your chance to participate under wholesome and enjoyable circumstances.

The primary purpose of the recreational courses is to provide pleasant and profitable leisure time activity for all students and to improve their performance ability. Teachers and supervisors of physical education and classroom teachers will find the courses valuable in organizing teaching material and methods. Recreational leaders and directors will get new ideas on promoting leisure time activities.

During the summer, many features will be added. The weekly movies will be continued. Musical programs, faculty recitals, lectures, summer opera in Cincinnati and Louisville, Blue Grass tours, picnics, dances, receptions, and teas are examples of some of the extracurricular offerings.

In addition to the overall program, departmental programs are many and varied. For instance, both the music and dramatic departments conduct programs for summer school students. All Summer School students will find these activities profitable and enjoyable. The fourth annual Family Life Institute will be held July 1-3, with headquarters at Memorial Hall. The Institute will be open to students and other interested citizens. Programs may be obtained from the Department of University Extension.

THE UNIVERSITY SCHOOL AND STUDENT TEACHING

The University Elementary School will be in session from Monday, June 9, through Friday, July 25. Classes in the school will meet five days a week from 8:00 to 12:00 o'clock. No tuition is charged for the summer session. Summer school students who have children of elementary school age have an opportunity to place them in the University School. The Elementary School maintains a modern program of education that should be of interest to parents attending the University of Kentucky summer session. Persons desiring to avail themselves of the opportunities of the University School should write the Director requesting reservations for their children.

Students desiring to register for student teaching should make application on or before May 23, to Professor Lyman Ginger, Director of the University School. Students are urged to file their applications for this course as early as possible as time should be allowed to check the prerequisites before registration. Students are requested to call at the office, 126 William S. Taylor Education Building for additional information.

Student teaching during the summer session will be limited to persons who have had previous teaching experience. Student teaching at the secondary level will be provided through the facilities of public schools within the area of the University.

LENGTH OF SESSION

The Summer Session of the University of Kentucky for 1952 will be eight weeks in length, six days a week. The session will open June 16 and close August 9. Classes during the Summer Session will begin at 7:00 a.m.

ADMISSION

Students will be admitted to the University as their previous education warrants. They will be admitted to the freshman class, to advanced standing, as special students, as graduate students, or as auditors.

Applicants for admission should write the Registrar's Office for forms on which to submit their applications, stating at the time whether they wish forms for admission to the freshman class, to advanced standing, or to the Graduate School. **Applications and transcripts of credit should be filed in advance.** Students entering with advanced standing and those entering the Graduate School should present transcripts from each institution they have attended.

To the Freshman Class. Applicants who are graduates of accredited high schools will be admitted to the University on certificate, provided they have at least fifteen units of acceptable high school work. A unit represents the study of any subject for a school year of at least thirty-two weeks, with five recitation periods a week, each of at least forty-five minutes in length, or the equivalent thereof. Double periods are required in shop, drawing, typewriting, and all other courses which demand no out-of-class preparation. One unit is the minimum credit accepted in any foreign language, and one-half unit the minimum in any other subject.

While the University does not prescribe a pattern of work for admission, it recommends that at least ten of the units presented be chosen from English, the social studies, mathematics, the foreign languages, and the laboratory sciences, and that within these ten units the student offer at least three units in English, one and one-half in algebra, and one in plane geometry. Should a student lack these courses as prerequisites for any of his college work, he will be required to take them in college without credit.

Applicants who have graduated from unaccredited high schools and those not graduated from high school may be admitted as freshmen, if, in addition to presenting the fifteen acceptable units, they successfully pass the University classification examinations.

Admission to the University does not necessarily qualify a student for admission to a particular college. In every case the student must meet the admission requirements of the college in which he is to enroll.

To Advanced Standing. A student who applies for admission with advanced standing is expected to present evidence that he is in good standing in every respect in the institution last attended, and in general is required to have maintained a standing of 1.0 in all previous college work. The University does not disregard at any time or under any conditions college or university records in order to admit applicants solely on the basis of their high school records.

As a Special Student. A graduate of another university or college may enter the University as a special student. Other persons may be admitted as special students provided they are fully prepared to do the work desired and provided they are at least twenty-one years of age.

As an Auditor. By payment of the required fees any person may be admitted to a class or classes as an auditor. A student regularly enrolled in any college must apply to the Dean of the college in which he is registered in order to be an auditor. Other persons should apply to the Registrar's Office for admission. No credit can be given for a class audited, nor is the student permitted an examination for credit.

College of Arts and Sciences. Admission to this college is governed by the general admission requirements of the University outlined on the preceding pages.

College of Agriculture and Home Economics. Admission to this College is governed by the general admission requirements of the University outlined on the preceding pages.

College of Engineering. In addition to meeting the general requirements for admission to the University, the applicant for admission to the freshman class of the College of Engineering shall include in high school credits one unit of plane geometry and one and one-half units of algebra. It is recommended that the student offer one-half unit in solid geometry; otherwise this subject will be added to the requirements of the freshman year.

Students whose scores on the University classification tests are in the lower one-fourth, or those lacking in the requirements for algebra, may enter the College of Engineering. The schedules of such students will be adjusted in accordance with their placement tests, as directed by a special orientation committee of the College of Engineering and the Personnel Office.

College of Law. An applicant for admission to the College of Law must be at least 18 years of age and have had the standard high school course that will satisfy the general requirements for admission to the University. In addition, he must meet the following requirements: Effective in September, 1952, three years of college credit (90 semester hours, at least 6 of which must be in English and not more than 9 of which may be in nontheory courses) will constitute the normal admission requirement. However, admission with only two years of college credit (60 semester hours, at least 6 of which must be in English and not more than 6 of which may be in nontheory courses) may be granted if the applicant contemplates four years of law work. Admission with only two years of college credit will depend upon the availability of a four-year program of law study at the time admission is sought. Any applicant who seeks to enter must communicate well in advance with the University Registrar's Office in order that the Registrar may determine the law program best suited to the individual's credentials.

College of Education. In addition to meeting the general admission requirements of the University, outlined on the preceding pages, the applicant for admission to the freshman class of the College of Education must rank in the upper three-fourths on the University classification tests. In order to transfer to the College of Education from another institution or from another college of the University, a student must have a standing of 1.0 or higher.

College of Commerce. In addition to meeting the general admission requirements of the University, outlined on the preceding pages, the applicant for admission to the freshman class of the College of Commerce must rank in the upper three-fourths on the University classification tests.

College of Pharmacy. Admission to the pre-pharmacy program of this college is governed by the general admission requirements of the University outlined on the preceding pages. For admission to the College of Pharmacy, see the University Catalog. The College of Pharmacy does not offer a summer session program.

The Graduate School. A graduate of a fully accredited institution of higher learning may be admitted to the Graduate School upon evidence of graduation and an official transcript of undergraduate courses. However, such

admission does not obligate the University to accept all credit granted by the undergraduate school. When full credit is not granted, the student will be required to do more than the normal amount of work to complete a graduate degree. Applications from graduates of institutions not fully accredited will be individually evaluated.

NUMBERING OF COURSES

Courses numbered 1 to 99 inclusive, may be taken for credit only by undergraduate students. Courses numbered 100 to 199, inclusive, may be taken for credit by juniors, seniors, and graduate students, provided that a course so numbered may carry graduate credit only with the approval of the student's graduate committee. Courses numbered 200 or above are open only to graduate students.

STUDENT LOAD

The normal load for undergraduates in the summer session is 9 semester hours. For graduate students the normal load is six hours; the maximum is nine. Graduate students who earn six or more graduate credits and who remain in residence throughout the summer session are assigned nine weeks of residence.

FEES

For the summer session the full-time fee for all Kentucky students, except those enrolled in the Law School, will be \$30.00 and for students in the Law College the fee will be \$31.50. For out-of-state students, in all colleges except law, who entered before September 1, 1947, the fee will be \$45.00, and for those entering after September 1, 1947, the fee will be \$60.00. The fee for out-of-state students in the Law College will be \$46.50 and \$63.00 respectively.

Part-time students will pay according to the number of semester hours carried, except that the full-time fee will be paid in all cases when the student load for the session equals or exceeds six semester hours.

Auditors are charged the same fee that they would pay for credit.

For special fees see the University Catalog.

REFUNDS

During the first week after the opening of the Summer Session, students withdrawing from the University may receive a refund on the amount paid in fees, not to exceed 70 per cent of all fees paid. During the second week a refund of 50 per cent may be secured, and during the third week a refund of 30 per cent. In no case shall the amount refunded exceed 70 per cent and in no case will refunds be made after the first three weeks.

A refund will not be granted unless the student makes his withdrawal official in the Registrar's Office.

LATE REGISTRATION

No student will be allowed to register for credit after June 21. (See University Calendar).

Students entering the University after the regular registration periods will be charged an additional fee of \$3.00 for the first day, \$4.00 for the second day, and \$5.00 for any day thereafter. No exceptions to this charge will be granted.

MARKING SYSTEM

Results of work will be recorded in the Registrar's Office as follows:

- A—Exceptionally high quality, valued at 3 points for each credit.
- B—Good, valued at 2 points for each credit.
- C—Fair, valued at 1 point for each credit.
- D—Unsatisfactory, indicates a deficiency and gives no points, but gives credit for graduation if with such credit the student's standing is 1 or more.
- E—Failure, valued at no points and no credits.
- I—Incomplete. WP—Withdrew passing.
- X—Absent from examination. WF—Withdrew failing.

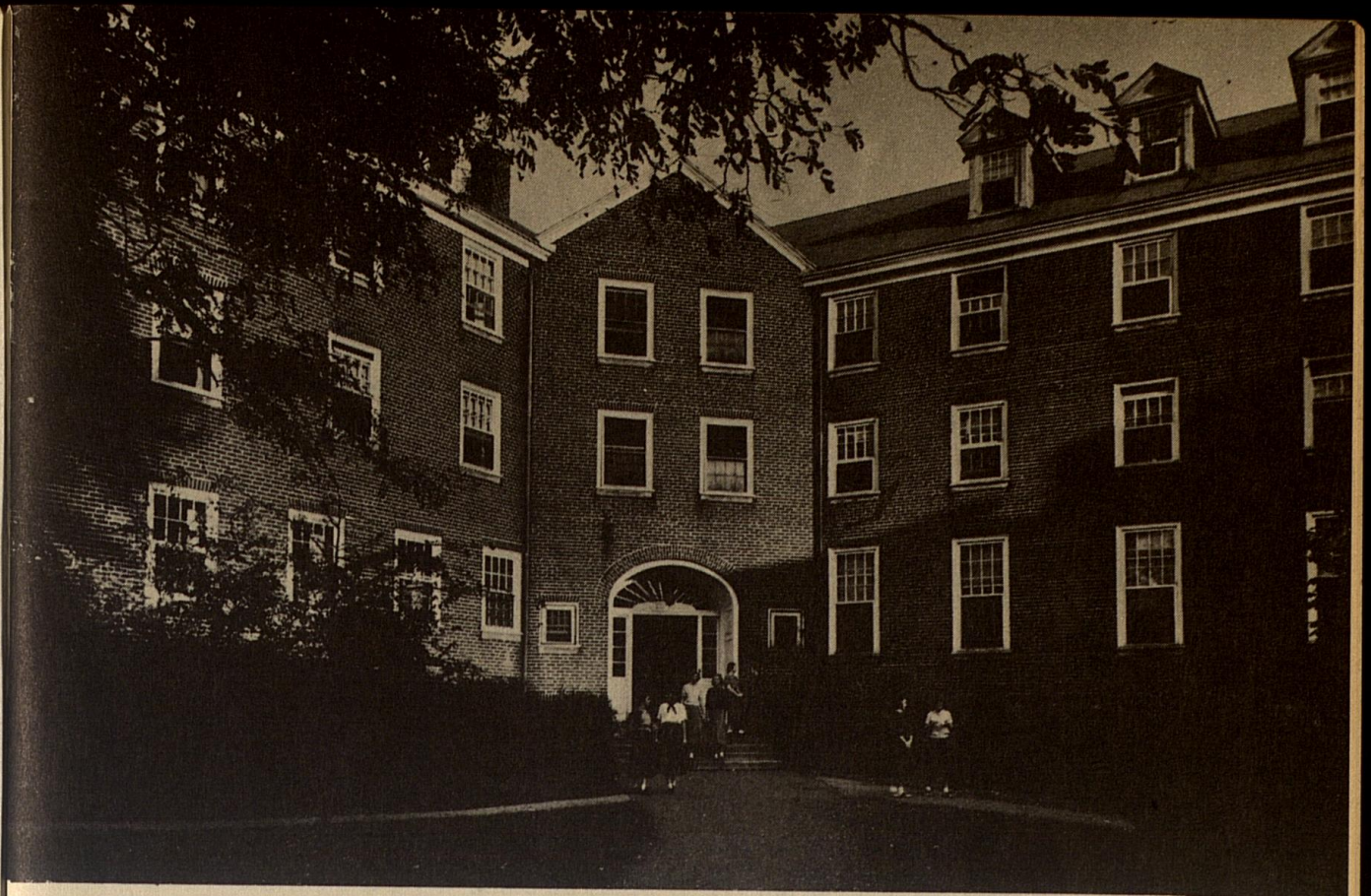
The standing of a student is defined as the ratio of his total number of points to his total number of credits. When a semester's work is to be considered a standing is understood to be the ratio of the number of points gained to the number of credits scheduled.

ROOM AND BOARD

Application for a room in the Women's Residence Halls should be made to the Dean of Women, and for a room in the Men's Residence Halls to the Dean of Men. Each application should be accompanied by a reservation fee of \$10.00. If a check is sent in payment of this fee it should be made payable to the University of Kentucky. **Refunds of this fee will be made only in case notification of cancellation is given the Dean of Women or the Dean of Men at least thirty days before the session opens for which the reservation is made.** Upon occupancy of the room by the student, this fee will be held as a damage deposit to be returned at the close of the session.

Women's Residence Halls. As the housing shortage has seriously limited the number of available rooms in Lexington, prospective students should make reservations for the Residence Halls or Sorority Houses as early as possible. The three large halls and as many of the smaller units as needed will remain open. Meals will be served in the central dining unit of the Residence Halls. The cost of room and board is \$110 per summer session.* Bed linens are furnished but students should bring blankets and towels. An application blank for reserving a room in the Residence Halls should be secured from the office of the Dean of Women but a reservation will not be made until the completed application is returned accompanied by the \$10 deposit. Admission to the University by the Registrar's Office does not constitute a reservation in the Residence Halls. All room assignments are made in the order of receipt of the completed application. In order to hold a room beyond the regular registration dates, special arrangements for late arrival should be made with the Dean of Women.

* The University reserves the right to change this figure in view of constantly rising living costs.



BOYD HALL—One of the three dormitories for women.

Men's Residence Halls. The University maintains four permanent Men's Residence Halls which are available to both undergraduate and graduate students during the summer term. Prices of rooms in these halls for the summer term range between \$22.50 and \$34.50.

The University also maintains temporary halls for men students. These are officer-type barracks which were erected at the end of the war by the Federal Housing Administration. Rent for the session per person ranges between \$22.50 and \$25.00.

To secure a room in either type hall the student should make application directly to the office of the Dean of Students.

Married Students' Housing. The University has two housing projects for married students and their families. To apply for a housing unit, communicate with the Office of the Dean of Students for general information and an application blank, then return the blank together with a deposit of \$10.00. This should be done as soon as possible as the assignment of these units is made according to the date of the application. The deposit is refundable upon request at any time.

University Cafeteria. Meals will be served at the University Cafeteria during the Summer Session.

Rooms and Board in Lexington. All prospective University of Kentucky students should make arrangements for living quarters before coming to

Lexington. For information relative to available rooms in the city the student should apply to the Office of the Dean of Women, or Dean of Students.

UNIVERSITY HEALTH SERVICE

The services of physicians and nurses and complete infirmary facilities will be available to the students registered in the Summer Session.

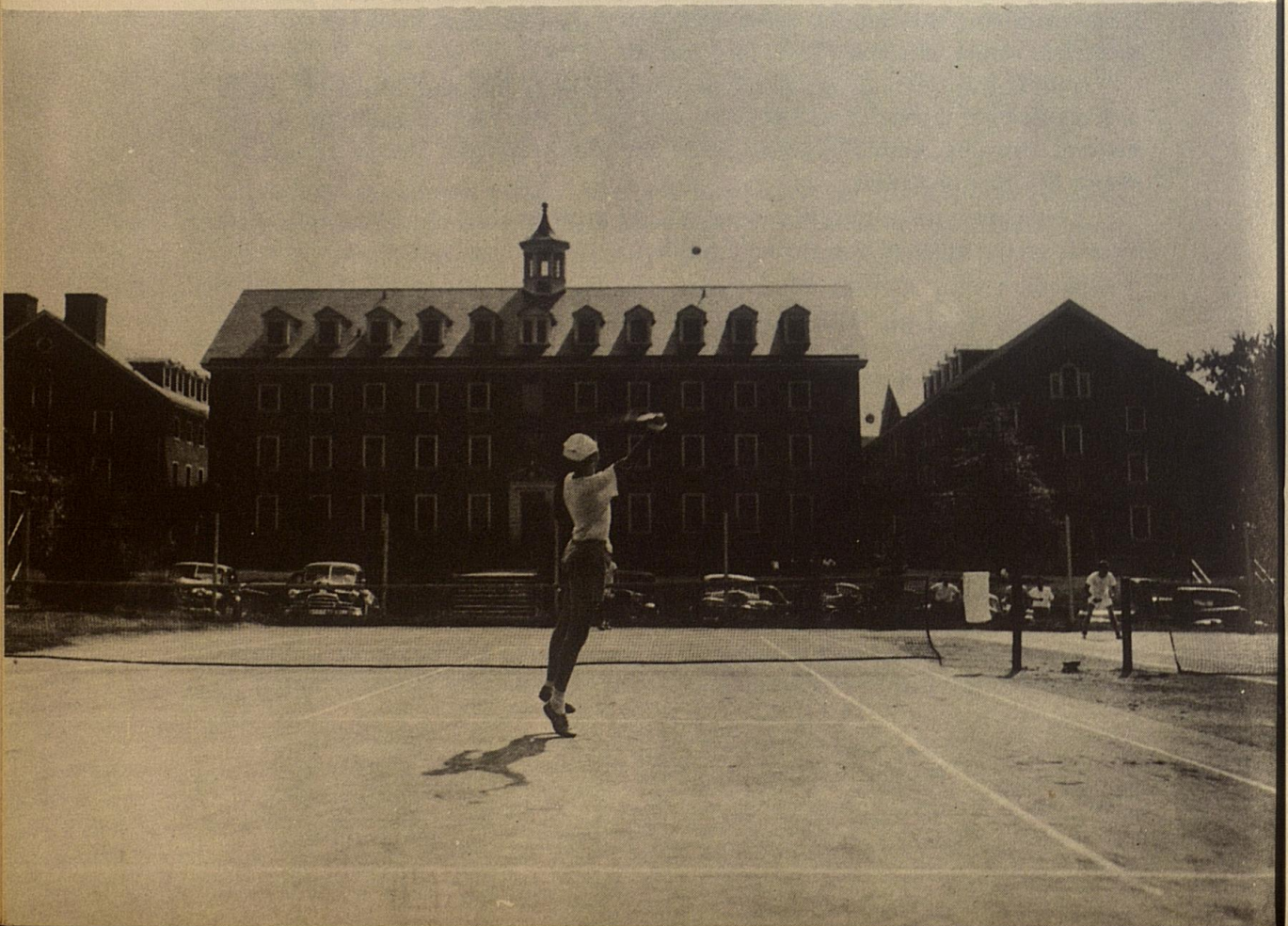
REQUIREMENTS FOR GRADUATION

Undergraduate Colleges. To be eligible for graduation from any undergraduate college of the University, a student must have completed the requirements of the curriculum as approved by the University Faculty. In addition to gaining the specified number of credits he must have an equal number of quality points — that is, a standing of 1.0.

Regardless of the length of time the student has attended the University, a minimum of thirty of the last thirty-six credits presented for the degree must be completed in residence at the University.

Not more than thirty-two of the credits required for an undergraduate degree may be gained by extension, special examination, or both. A student may not satisfy in excess of one-half the requirements for a major by extension, special examination, or both.

QUADRANGLE — There are four residence halls for U.K. men.



The Graduate School. A minimum residence of one year (36 weeks) is required for the masters degree, and three years (108 weeks) for the doctorate. See the Catalog or Graduate Bulletin for the specific requirements for the various graduate degrees.

No transferred credits are accepted toward the masters degree. In exceptional circumstances and with the approval of the student's special committee, two years of graduate work from a fully accredited institution which offers the doctors degree may be accepted toward the Ph.D. or the Ed.D. degree.

Theses must be presented in final form to the Dean of the Graduate School not later than ten days before the date set for the final oral examination. The oral examination must be taken at least fifteen days before the close of the semester or summer session.

A graduate student must maintain a standing of 2.0 and no grade below C shall be counted.

One-third of the residence and credit required for a master's degree may be taken by University extension.

No graduate credit is given for courses taken by correspondence.

No work is given graduate credit unless the student was enrolled in the Graduate School at the time during which the work was taken.

Application for a Degree. All students in residence during the summer session who are to be candidates for degrees in August should make formal application in the office of the University Registrar on Friday and Saturday, June 28 and June 29. **No applications for graduation in August will be received after July 9.** The student is responsible for making application for the correct degree. That is, if a student is working for the degree, Bachelor of Arts in Education, he should apply for this degree and not make application for the degree, Bachelor of Arts, granted in the College of Arts and Sciences. If, for any reason a student does not receive the degree at the time indicated on the application, it will be necessary for him to file another application, as the University is not responsible for carrying over applications from one session to another.

COLLEGE OF ARTS AND SCIENCES

The college courses are planned to meet the needs of various classes of students. They may be listed under the following heads:

1. General cultural courses with majors and fields of concentration, leading to the degrees of A.B. and B.S.
2. Professional courses in industrial chemistry, leading to the degree of B.S. in Industrial Chemistry; in journalism, leading to the degree of A.B. in Journalism; in music, leading to the degree of B.M.; and in bacteriology, leading to the degree of B.S. in Medical Technology.
3. Professional courses in which the general requirements for the A.B. and B.S. degrees are fulfilled.

4. Pre-Professional courses meeting the requirements for admission to professional schools.
5. Combined courses, by means of which students may have a year or more in gaining both the A.B. or B.S. and a degree in Law, Medicine, or Dentistry.
6. Graduate courses leading to the masters and doctors degrees in the Graduate School.

The Degree of Bachelor of Arts. For the degree of Bachelor of Arts the student is required to gain a total of 128 credits and 128 points; that is, a standing of 1.0, subject to the following conditions.

OUTLINE OF REQUIREMENTS FOR GRADUATION

Lower Division — Freshman and Sophomore Years

General Requirements:

- English, first and second semesters, freshman year 6 credits.
- General Hygiene, first or second semester, 1 credit.
- Physical Education, freshman and sophomore years, passing the physical education achievement tests.
- Military Science (men), freshman and sophomore year, 8 credits.

Group Requirements:

1. **Foreign Languages.** (French, German, Greek, Italian, Latin, Russian, Spanish. Required: Passing a basic achievement examination, or the second year of a language with C grades or better.
2. **The Humanities.** To satisfy the lower division requirements in the Humanities students in the College of Arts and Sciences must earn four credits in literature and philosophy (Humanities A, B, or C) and two credits in Art or Music (Humanities D or E). These courses should be taken during the sophomore year, and two courses from A, B, or C may not be taken simultaneously.
3. **The Social Studies.** The student is permitted to choose two of the following courses, to satisfy the group requirement in the social studies: History 5a, b, 4a, b, Political Science 51a, b, Anthropology 3a, Sociology 3a, b, Geography 3a, b.
4. **The Biological Sciences.** Students may satisfy the biological group requirements by completing a minimum of six semester credits from the following courses: Anatomy and Physiology 2, 10; Anthropology 1; Bacteriology, 2a, b, 52; Botany 1, 2, 25; Psychology 1a, b; Zoology 1. Note.—Six credits of the courses that satisfy the biological and physical sciences requirements must be in courses that have laboratory.
5. **The Physical Sciences.** Students will be permitted to take work in either one or two departments in order to satisfy the physical science requirement. Six or more credits can be taken from the following courses: Astronomy 51a, b; Chemistry 1a, b, 4a, b; Geology 50a, b (50a

is prerequisite for 50b), 3, 30a, b; Mathematics 5, 17, 18, 19; Physics 1a, b, 3a, b, 51a, b (51a is prerequisite for 51b). See note under Biological Sciences.

Note.— A student must have attained a standing of 1.0 in order to be promoted to the next higher classification.

Freshman Core Curriculum	Credits
General Hygiene	1
Military Science (men)	4
Physical Education	0
English	6
Social Studies	6
Physical or Biological Sciences	6
Foreign Languages or free electives	6

Total number of credits required in Lower Division, 64.

The normal load per semester is 16 credits.

Rules and Procedures

1. Superior Students: Entering freshmen, in the upper twenty-five per cent of the classification scale, as determined by University of Kentucky classification tests, may substitute other courses in the groups for those courses which are set up especially to satisfy group requirements. Other students, in the top twenty-five per cent of the classification scale of the University of Kentucky classification tests, with a standing of 2, may be granted the same privilege.
2. The requirements in whole or in part for English, for General Hygiene, and for any of the Groups under Section II, may be satisfied without credit by passing a departmental proficiency examination.

Upper Division — Junior and Senior Years

Field of Concentration. Forty credits are to be elected subject to the approval of the student's adviser and the Dean of the College, and must be in courses not open to freshmen.

Major. At least 15 credits of the required 40 in the field of concentration must be in one department, the major department, exclusive of courses open to freshmen. However, the major department may require more than the minimum 15. A minimum of 6 credits is required as a prerequisite for a major in any department. A **Topical Major** is also offered which is not confined to one department or field.

The Four Generically Related Fields Are: 1. Literature, Philosophy, and the Arts. 2. Social Studies. 3. Physical Sciences. 4. Biological Sciences.

Tutorial Work and Comprehensive Examinations. Students majoring in the departments of Anatomy and Physiology, Ancient Languages, Art, Botany, Economics, Geology, German, Journalism, Music, Philosophy, Physical Education, Physics, Political Science, Psychology, Radio Arts, Romance

Languages, Social Work, Sociology, and Zoology will be required to schedule tutorial courses as specified by their major department and to take final comprehensive examinations as a prerequisite for graduation.

COLLEGE OF AGRICULTURE AND HOME ECONOMICS

Agriculture

To receive the degree Bachelor of Science in Agriculture a student is required to complete a total of 136 credits and 136 points. These represent the minimum requirements for graduation. There are seven curricula in agriculture, and completion of the requirements of any one of these leads to the degree. The student is responsible for meeting the requirements for graduation.

The General Curriculum in agriculture enables the student to obtain a general education and at the same time pursue some specialization in a chosen field. In this curriculum the student has the privilege of selecting one of the following options for study during the junior and senior years: Agricultural Entomology, Agricultural Extension, Agricultural Inspection, Agricultural Journalism, Agricultural Science, Agronomy, Farm Economics, General Agriculture, Markets and Rural Finance, Rural Sociology, Soil Conservation, and Vocational Agriculture.

The Curriculum in Agricultural Economics prepares students for business opportunities in agriculture and allied industries.

The Curriculum in Agronomy prepares students to pursue graduate work, to be specialists in soils and crops, and to farm.

The Curriculum in Animal Industry is for students whose primary interest is in livestock production and the livestock industry. The student in this curriculum may choose one of the following options: Animal Husbandry, Dairy Manufacturing, Dairy Production, or Poultry Husbandry. Proper selection of electives permits a student to prepare to teach Vocational Agriculture.



BETWEEN CLASSES—The busy University campus is a place of beauty throughout the year.

The Curriculum in Horticulture is for students interested in the production of fruits and vegetables and in horticultural industries. It provides opportunity for a student to prepare to teach Vocational Agriculture.

The Curriculum in Ornamental Horticulture prepares specialists in floriculture and landscape gardening.

The Curriculum for Teachers of Vocational Agriculture prepares students to be teachers of agriculture in high school. Minimum standards for institutions training or preparing to train teachers of vocational agriculture have been approved by the Association of Land-Grant Colleges and Universities. Areas included are: The curriculum; number of professors; educational qualifications of the faculty; teaching assignments; research programs; and facilities, including farms, livestock, libraries, and well-equipped laboratories in all agriculture and science departments. The University of Kentucky meets the standards in agriculture, in education, and in arts and sciences.

An undergraduate transfer student is required to complete in the University a minimum of 68 credits, including 43 in agriculture. The College of Agriculture and Home Economics and Eastern Kentucky State College have in operation a cooperative plan which recognizes freshman and sophomore courses in agriculture taught at Eastern as carrying course and residence credit toward the degree, Bachelor of Science in Agriculture, awarded by the University of Kentucky. Acceptance of transfer credit for courses in agriculture is limited to courses numbered 1 to 99 in the University of Kentucky catalog. The student must have satisfied the prerequisites required by the University.

A student having a bachelors degree may be eligible for the degree Bachelor of Science in Agriculture when he has completed the requirements of a curriculum in agriculture. This shall consist of not less than thirty credits beyond the first degree.

Home Economics

To receive the degree Bachelor of Science in Home Economics a student is required to complete a total of 136 credits and 136 points. These represent the minimum requirements for graduation. There are six curricula in home economics and a student who completes the requirements of any one of these qualifies for the degree. The student is responsible for meeting requirements for graduation.

The General Curriculum in Home Economics meets the needs of most students and provides the basic requirements for the curricula in major fields. It enables the student to obtain a general education and at the same time pursue some specialization in a chosen field of home economics.

In addition to the general curriculum, provision is made for majors in the following fields: Child Development and Family Living; Clothing, Costume Design, Textiles and Interior Decoration; Home Economics Extension; Institution Economics; and Vocational Home Economics.

A transfer student is required to complete in the University a minimum of seventeen credits of home economics and an additional thirteen credits to meet the University regulations.

COLLEGE OF ENGINEERING

Admission. In addition to meeting the general requirements for admission to the University, the applicant for admission to the freshman class of the College of Engineering shall include in high school credits one unit of plane geometry and one and one-half units of algebra. It is recommended that the student offer one-half unit in solid geometry, otherwise this subject will be added to the requirements of the freshman year.

Students whose scores on the University classification tests are in the lower one-fourth or those lacking in the requirements for algebra may enter the College of Engineering. The schedules of such students will be adjusted in accordance with their placement test as directed by a special orientation committee of the College of Engineering and the Personnel Office.

Courses of Study and Degrees. The College of Engineering offers instruction leading to the following baccalaureate degrees:

- Bachelor of Science in Civil Engineering
- Bachelor of Science in Electrical Engineering
- Bachelor of Science in Mechanical Engineering
- Bachelor of Science in Metallurgical Engineering
- Bachelor of Science in Mining Engineering

The courses of study leading to these degrees are essentially the same during the freshman year. This gives the student the benefit of a period of training in fundamental subjects before he is required to choose among the different fields.

There will be a freshman class in engineering beginning work in the Summer Session of 1952.

THE COLLEGE OF LAW

The College of Law offers regular courses in the Summer Session, during which students may obtain credits and residence equivalent to one-half semester. By attending two Summer Sessions, students may thus materially shorten the time required for graduation. A total of six semesters or the equivalent is required for graduation. The same quality of work is required in the Summer Session as is required in the regular semesters.

The College is fully accredited by all agencies which establish standards for law schools, including the Court of Appeals of Kentucky, the Association of American Law Schools, the American Bar Association, the Regents of the University of the State of New York, and the Courts and Bar Examiners of all forty-eight states and the Federal jurisdictions. It has a chapter of the Order of the Coif, an honor society for the recognition of excellence in law study, and its law review, The Kentucky Law Journal, is on all lists of outstanding legal periodicals. Its Library of more than 37,000 volumes is among the six largest in the South and regionally recognized for the completeness of its Reports and periodical collections. All members of the Faculty have had experience in practice and done graduate work in law. Its graduates are frequently awarded scholarships and fellowships for graduate study in law.

The courses in the College of Law for the Summer Session are planned with special reference to three types of students: first, students who desire to shorten the three-year period by studying during the summer; second, public

school teachers who desire to know something about the law either for their own benefit or for the purpose of advising students; third, lawyers, probate judges, and prosecuting attorneys who desire either to complete their work for a degree or to become acquainted with recent developments of the law. However, no new class of beginning students is admitted to the College during the Summer Session. The next regular class of new students will be admitted in September, 1952.

Those interested in fuller information about the College and its facilities are invited to write the Dean, requesting a copy of the Bulletin of the College of Law or any specific information.

COLLEGE OF EDUCATION

The College of Education grants the degree of Bachelor of Arts in Education.

To be admitted to the College of Education a student shall meet the following requirements: standing of at least 1.0 (average of C on all previous work) or, if an entering freshman, he must rank in the upper three-fourths on the University placement tests.

For a degree in education the student is required to present a total of 128 credits with a standing of 1.0.

General Requirements for Students in the Field of Secondary Education

A student who majors in secondary education must complete 128 credits with a standing of 1.0 to be graduated. Majors in secondary education have the following options in the choice of curricula leading to certificates: (1) an area of concentration, (2) two majors, (3) one major and two minors, or (4) one major and one minor when the credit in both is 48 credits, (54 credits when English is included as a major).

Teaching Majors, Minors, and Areas of Concentration

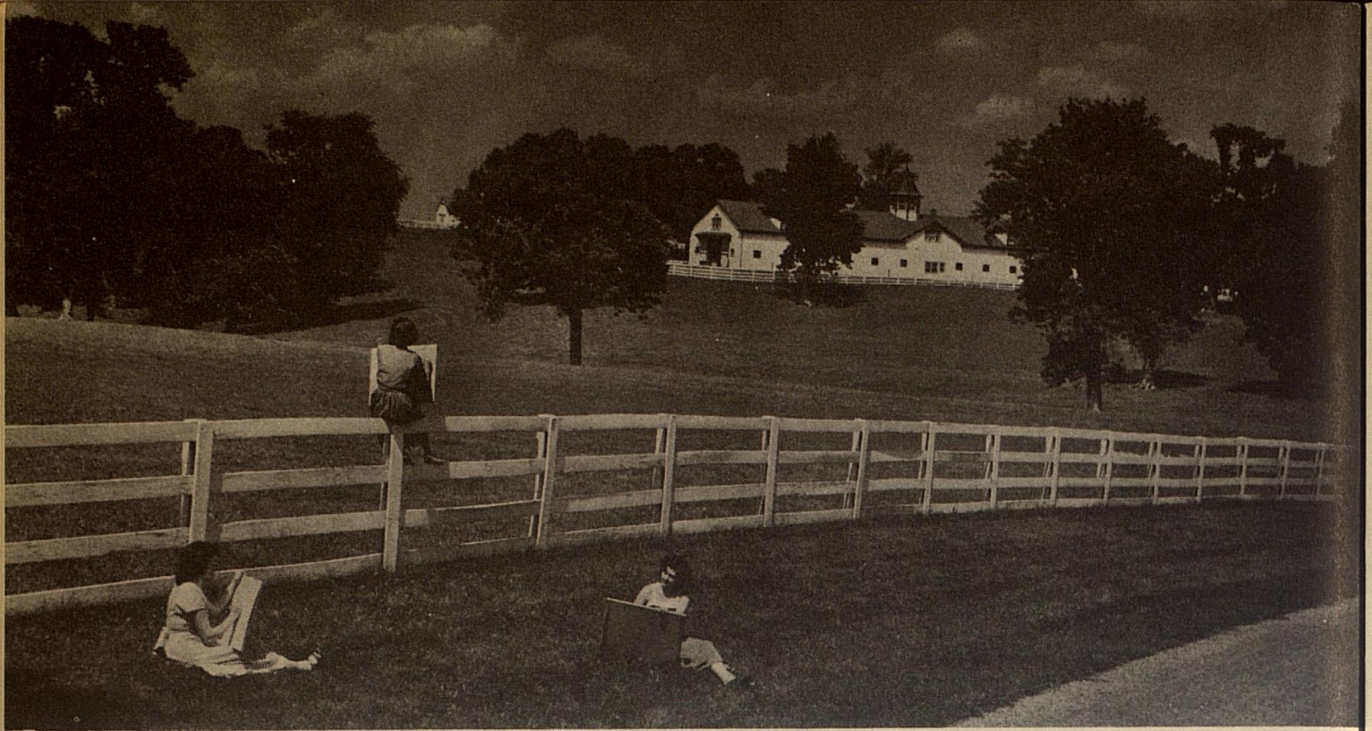
A major shall consist of 24 credits, except a major in English which shall shall require 30 credits.

A minor shall require 18 credits.

An area of concentration varies with the subjects. Usually it shall be 48 credits unless otherwise specified.

I. General Requirements	Credits
a. English, including composition, literature, and speech	12
b. Health, Physical Education, and Safety	6
c. Psychology	6
d. Group requirements	27

Each candidate must present not less than 27 credits distributed among three fields with not fewer than 6 credits in any field. Two of these three groups must be in fields different from the majors and minors or area of concentration. One group may be in the same field but not in the same



BUSINESS AND PLEASURE — Working on a class assignment.

subject as the major or one minor. The fields from which the 27 credits may be selected are:

Fine Arts (Music, Art, and Humanities D and E)

Foreign Languages (French, German, Italian, Latin, Russian, Spanish)

Mathematics (all mathematics courses except astronomy)

Philosophy and Psychology (all courses taught in the Departments of Philosophy and Psychology)

Sciences (Anatomy and Physiology, Anthropology 1, 11, 111, Astronomy, Botany, Chemistry, Geology, Physics, Zoology)

Social Sciences (Anthropology (except 1, 11, 111), Economics, Geography, History, Political Science, Sociology)

Vocational Subjects (Agriculture, Commerce, Engineering, Home Economics, Journalism, Law, Library Science, Radio Arts)

II. Professional Preparation	Credits
a. Introduction to Education	2
b. Educational Psychology	3
c. The Secondary School Pupil	3
d. Fundamentals of Secondary Education	3
e. Student Teaching	9

General Requirements for Students in the Field of Elementary Education

A student who majors in elementary education must complete a total of 128 credits, with a standing of 1.0, to be graduated.

I. General Requirements	Credits
a. English, including composition, speech, and English literature	15
b. Science	12
c. Social Sciences, including American History, European History, Kentucky History, Sociology, and Geography	21
d. Fine Arts, including public school music and public school art	12
e. Psychology	6
f. Nutrition	3
g. Health and Physical Education	6
II. Professional Preparation	
a. Child Growth and the Curriculum	6
b. Arts and Crafts in the Elementary School	2
c. Teaching Arithmetic in the Elementary School	3
d. The Teaching of Reading	3
e. Children's Literature	3
f. Science in the Elementary School	3
g. Student Teaching in the Elementary School	12
III. Electives	21

COLLEGE OF COMMERCE

The degree of Bachelor of Science in Commerce is conferred upon students who meet the requirements of any one of the curricula offered by the College of Commerce. The minimum number of semester credits required for graduation is 128, except under the Industrial-Administration Curriculum which requires 140. The scholarship standing must be at least 1.0.

The courses listed in the General Business Curriculum constitute a core curriculum, because with minor exceptions, these courses are required in all curricula. They are considered basic to all majors or fields of concentration.

COLLEGE OF PHARMACY

At present the College of Pharmacy does not offer a summer session program.

THE GRADUATE SCHOOL

The Growth of the Graduate Program. The demand for graduate work at the University of Kentucky has grown rapidly in recent years. High school teachers, supervisors, principals and superintendents of schools, and teachers in teachers' colleges and junior and senior colleges are seeking the education and training represented by higher degrees. To meet this demand, the several colleges of the University are providing larger programs of work for graduate students.

Residence Credit. A graduate student must carry at least six hours (the normal load) in the Summer Session to be entitled to full residence credit for the session. The maximum load is nine hours and one lower than this is strongly recommended.

Applicants for Graduate Degrees. Applications for degrees must be made at least four weeks before the date of commencement. These applications are made at the office of the Registrar of the University.

Minimum Requirements for the Masters Degree. A candidate for the degree of Master of Arts or Master of Science is required to complete 24 credits of graduate work (of which two-thirds is in a major and one-third in electives), spend a full year or the equivalent in residence, present an acceptable thesis, have a reading knowledge of one modern foreign language and pass a final oral examination. He must maintain a standing of 2.0.

Minimum Requirements for Professional Degrees. Professional Masters degrees in Education, Agriculture, Engineering, Home Economics, and Public Health may be secured with the same requirements as given above except that there is no language requirement. In Education 6 additional credits may be offered in lieu of the thesis with permission of the department. In Agriculture and Home Economics, with departmental consent, 12 additional credits and 9 additional weeks may be offered in lieu of the thesis.

General Requirements for a Masters Degree. All candidates for any master's degree must have completed the equivalent of a B.A. or B.S. degree in a fully accredited institution. Part-time residence during any semester or summer session is computed on the basis of one and one-half weeks of residence for each credit earned.

Under certain conditions, up to one-third of the credit and residence requirement for any master's degree may be satisfied by off-campus courses taught by regular faculty members. Correspondence credits may not be applied toward advanced degrees.

General Requirements for the Doctors Degree. The degree of Doctor of Philosophy is offered with major work in the following fields: Agricultural

Economics, Bacteriology, Chemistry, Education, Economics, English, History, Mathematics, Physics, Psychology, Political Science, and in the combined fields of Sociology and Rural Sociology. Minor work may be carried in any department offering graduate courses.

The degree of Doctor of Philosophy is conferred upon a candidate who after completing not less than three years of graduate work devoted to the study of a special field of knowledge, satisfies the language requirements, passes the required examination in the subjects, presents a satisfactory dissertation, and is deemed worthy of recognition as a scholar of high attainments in his chosen province.

The doctor's degree is intended to represent not a specified amount of work covering a specified time, but the attainment through long study of independent and comprehensive scholarship in a special field. Such scholarship should be shown by the candidate's thorough acquaintance with present knowledge in his special field of learning and a marked capacity for research.

A minimum of three collegiate years of resident graduate work, of which at least the last year must be spent at the University of Kentucky, is required for the doctorate. The full time of each of these years must be spent in study. Part-time students and those holding assistantships or engaging in other outside activities will of course be required to take a proportionately longer time.

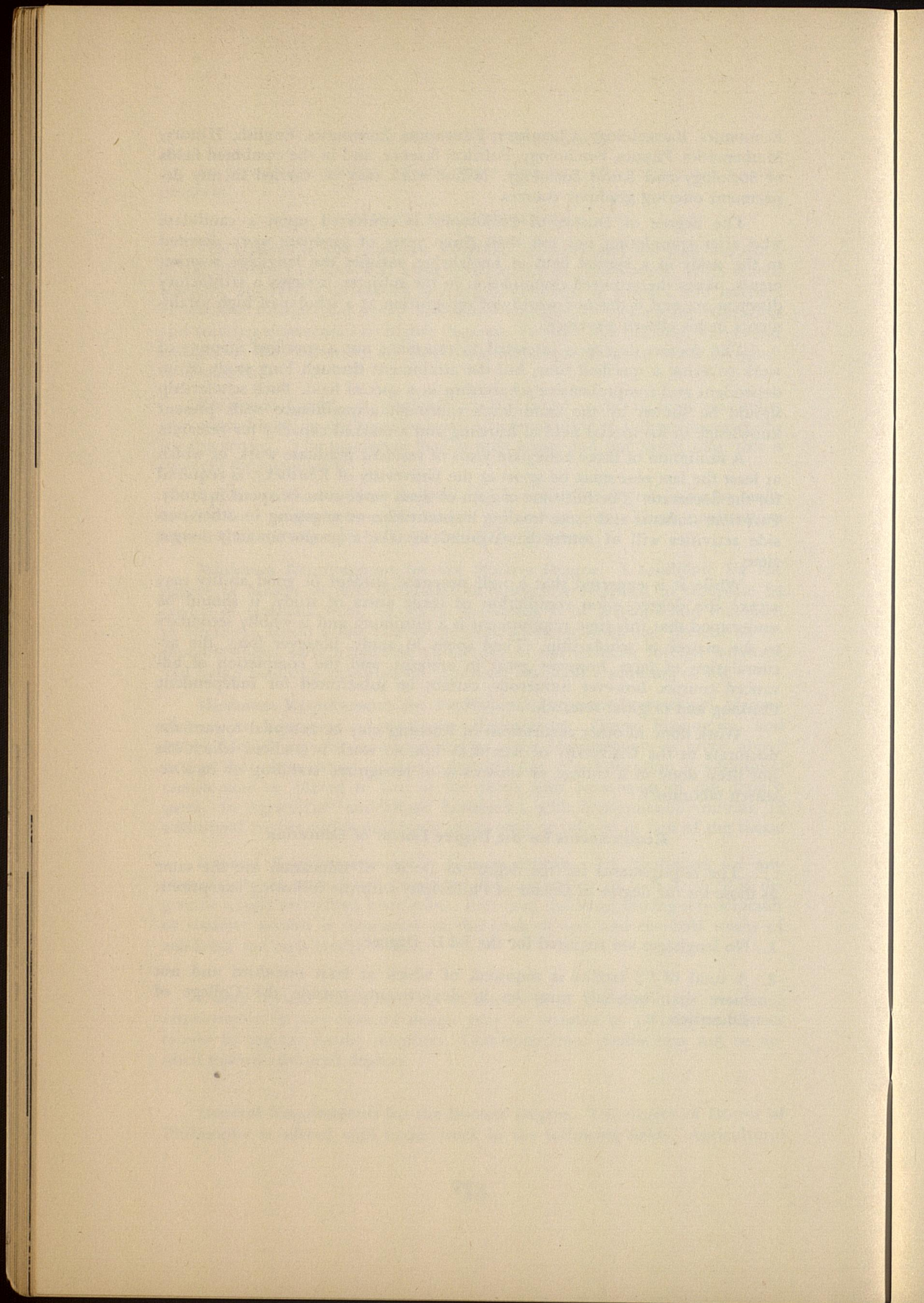
While it is expected that a well prepared student of good ability may secure the degree upon completion of three years of study, it should be understood that this time requirement is a minimum and is wholly secondary to the matter of scholarship. Time spent in study, however long, the accumulation of facts, however great in amount, and the completion of advanced courses, however numerous, cannot be substituted for independent thinking and original research.

Work done in other institutions of learning may be accepted toward the doctorate at the University of Kentucky but no work is credited which has not been done in a college or university of recognized standing or in a research laboratory.

Requirements for the Degree Doctor of Education

The requirements for the degree of Doctor of Education are the same as those for the degree of Doctor of Philosophy with the following exceptions:

1. No languages are required for the Ed.D. Degree.
2. A total of 72 credits is required, of which at least one-third and not more than one-half must be in departments outside the College of Education.



Part II

SCHEDULE OF CLASSES

BY COLLEGES AND DEPARTMENTS

THE
LIBRARY OF THE
MUSEUM OF NATURAL HISTORY
AND
ZOOLOGY
OF THE
SMITHSONIAN INSTITUTION
WASHINGTON, D. C.

EXPLANATIONS AND ABBREVIATIONS

Colleges are arranged according to order in the catalog and in general, the departments of each College are arranged alphabetically.

Days of recitations are indicated by the initial letters of the days. For example, M-TH indicates the class is offered Monday through Thursday, M-S indicates the class is offered Monday through Saturday, etc.

The buildings are indicated as follows:

A, Administration	McVH, McVey Hall
AE, Agricultural Engineering	MeH, Memorial Hall
AG, Alumni Gymnasium	MeL, Meat Laboratory
AH, Anderson Hall	MC, Memorial Coliseum
AP, Animal Pathology	MH, Miller Hall
Agr, Agriculture	ML, Mining Laboratory
BH, Barker Hall	Museum
BL, Bowling Lanes	NH, Neville Hall
CA, Chemistry Annex	NS, Nursery School
D, Dairy	Obs, Observatory
DC, Dairy Center	Pence, Pence Hall
EGJ, Enoch Grehan Journalism	PA, Psychology Annex
FA, Fine Arts	Q, Quonset
FH, Frazee Hall	SP, Stock Judging Pavilion
FB, Funkhouser Biological Sciences	SS, Social Sciences
HB, Health and Hygiene	SU, Student Union
HE, Home Economics	TEB, Taylor Education Building
KH, Kastle Hall	TL, Tobacco Laboratory
KL, King Library	WG, Women's Gymnasium
L, Lafferty Hall	WH, White Hall

RECITATION HOURS**

First Hour	7:00— 7:50
Second Hour	8:00— 8:50
Third Hour	9:00— 9:50
Fourth Hour	10:00—10:50
Fifth Hour	11:00—11:50
Sixth Hour	12:00—12:50
Seventh Hour	1:00— 2:00
Eighth Hour	2:10— 3:10
Ninth Hour	3:20— 4:20
Tenth Hour	4:30— 5:30

**Recitation hours are fifty minutes during the mornings and sixty minutes during the afternoons.

INSTRUCTIONS FOR CLASSIFICATION

1. After you have registered go to the Dean's booth in the Coliseum for information and assignment to your adviser.
2. Make out your schedule with the help of your adviser.
3. In making out your schedule write, in the proper spaces, the **name of the department** with the course and section numbers.
4. After classes are assigned leave four copies of your schedule at your Dean's booth.
5. **Any changes** from the original schedule must be made in the Dean's office. To drop a subject at any time during the quarter, you should first consult your Dean.
6. Extra work petitions must be presented when schedules exceed the amount permitted by the college in which you are enrolled. A standing of 2.0 is required.
7. Four copies of your completed schedule must be filed with your Dean before the close of the registration period. Failure to do this may result in loss of credit for the term.
8. A course cannot be added to your schedule after June 21.

Course Number	Subject	Credits	Days	Hour	Building and Room Number	Instructor
---------------	---------	---------	------	------	--------------------------	------------

AGRICULTURE

A student in the College of Arts and Sciences may elect toward the A.B. or B.S. degree a total of 30 credits from other colleges of the University.

ATOMIC SCIENCE FOR NON-SCIENCE MAJORS

A series of two credit courses in the physical and biological sciences designed to acquaint the student who has not taken more than 6 hours in the field of science with the developments in the atomic field. The courses are especially designed for such groups as: high school teachers, majors in social studies, majors in literature, philosophy and the arts, and the civilian defense workers.

Prerequisites: classified as junior or above; 6 hours in biology or in the physical sciences, including mathematics.

The student may sign up for four of the courses, and cannot sign up for less than three of them.

METHOD

1. Lectures by well known authorities from 8:00 to 9:00 o'clock, Monday through Thursday.
2. Meetings in groups of 5 in the Cafeteria from 9:00 to 10:00 o'clock.
3. Discussion meetings from 10:00 to 12:00 of specialized topics from the fields of botany, chemistry, physics, physiology, and zoology. The meetings will be in groups of 24 for periods of two weeks each for the three or four classes selected by the student.

A detailed class schedule will be published later.

AIR SCIENCE AND TACTICS

Edward G. Davis, Col. USAF, Head of Department, Barker, 205

*1a31	AS I ROTC	2	M-S	3	BH 203	Staff
41a31	AS II ROTC	2	M-S	3	BH 201	Staff

ANATOMY AND PHYSIOLOGY

R. S. Allen, Head of Department, Funkhouser Biological Sciences, 304

UPPER DIVISION REQUIREMENTS - Junior and Senior Years

Requirements in the Field of Concentration: Forty credits of advanced work in the field of Biological Sciences during the Junior and Senior years, including the Major work.

Requirements for a Major. Prerequisites: Anatomy and Physiology 10; Zoology 1; Botany 1; Physics 1a and 1b; Chemistry 1a and 1b. Required: A minimum of 3 elective credits of advanced work in Anatomy and Physiology plus the courses Anatomy and Physiology 107, 108, 109, 116a, and 116b, and passing a comprehensive examination in senior year.

LOWER DIVISION REQUIREMENTS - See Page 20

The Biological Sciences. Students may satisfy the biological group requirements by completing a minimum of six semester credits from the following courses: Anatomy and Physiology 2, 10; Anthropology 1; Bacteriology, 2a,b, 52; Botany 1, 2, 25; Psychology 1a,b; Zoology 1.

Note: Six credits of the courses that satisfy the biological and physical sciences requirements must be in courses that have laboratory.

*2	Elem. Anat. & Physiol. (Lec. & Rec.)	3	M-S	3	FB 313	Allen
C10-1	Gen. Physiol., Lec.	4	M-S	4	FB 313	Boyarsky
C10-11	Gen. Physiol., Lab.		TTh	1-2:50	FB 307	Staff

Prereq: Chem. 1a & 1b; Physics 1a & 1b. Physics may be taken concurrently.

* Open to Freshmen

Course Number	Subject	Credits	Days	Hour	Building and Room Number	Instructor
---------------	---------	---------	------	------	--------------------------	------------

ANATOMY AND PHYSIOLOGY - cont.Courses open only to Upper Division and Graduate Students:

C105	Arch. of the Human Skeleton (Lec. & Rec.) Prereq: Junior standing	3	M-S	4	FB 306	Allen
106	Intro. to Endocrinology Prereq: A. & P. 10 or equiv; Zool. 7b; Chem. 1a & 1b; & the Instructor's consent	3	M-S	2	FB 313	Archdeacon
108	Circulation, Respiration, & Metabolism Prereq: A. & P. 10 or equiv.	3	M-S	4	FB 307	Archdeacon
109	Cellular Physiol. Prereq: A. & P. 10 or equiv., Physics & Gen. Chem.	3	M-S	5	FB 306	Boyarsky

Course open only to Graduate Students:

201a-i	Res. in Physiol.	3 ea.	By Appt.		303a FB 304a 305a	Staff
--------	------------------	-------	----------	--	-------------------------	-------

ANCIENT LANGUAGES

Jonah W. D. Skiles, Head of Department, Frazee, 102

UPPER DIVISION REQUIREMENTS - Junior and Senior Years

Requirements in the Field of Concentration: Forty credits of advanced work in the field of Literature, Philosophy, and the Arts during the Junior and Senior years, including the Major work.

Requirements for a Major: Prerequisites: First two years of college Latin or Greek. Required: A minimum of fifteen credits of advanced work in Ancient Languages; Tutorial Seminar; Comprehensive Examination in the Senior year.

Note: The student who presents one unit of high school foreign language will be permitted to enroll in first year work in the same language for full credit. The student who presents two units of high school foreign language will be permitted to enroll in first year work in the same language, but will receive credit only if he makes at least a B standing in this course.

LOWER DIVISION REQUIREMENTS - See Page 20

*C1a	Beginning Latin	1	M-S	2	FH 102	
*C1b	Elem. Latin Reading	2	M-S	2	FH 102	
	(C1a and C1b are planned as a refresher sequence for teachers and may not be taken separately.)					
*1a	Beginning Latin	3	M-S	2	FH 106	
*1b	Elem. Latin Reading	3	M-S	2	FH 106	
70	Greek Mythology	2	M-Th	5	FH 102	
	(No prereq. Given in English)					

Courses open only to Upper Division and Graduate Students:

120	Greek Civilization	2	M-Th	5	FH 106	Skiles
150	The Tchg. of Latin	3	M-S	3	FH 106	Skiles
C150	The Tchg. of Latin	1	M-S	4	FH 106	
	(Demonstration Class in Beginning High School Latin, June 18 - July 12)					
C150	The Tchg. of Latin	4	M-S	3, 4, 5	FH 106	
	(June 18 - July 12)					
151a-h	Indp. Work in Anc. Lang.	3 ea.	By Appt.		FH 102	Skiles
	(Reading, grammar and composition, and research courses in Greek or Latin to suit the needs of individual students)					

Courses open only to Graduate Students:

200	Res. in the Tchg. of Classical Languages	3	By Appt.		FH 102	Skiles
-----	--	---	----------	--	--------	--------

* Open to Freshmen

Course Number	Subject	Credits	Days	Hour	Building and Room Number	Instructor
---------------	---------	---------	------	------	--------------------------	------------

ANTHROPOLOGY

Head of Department, Pence, 101

UPPER DIVISION REQUIREMENTS - Junior and Senior Years

Requirements in the Field of Concentration: Forty credits of advanced work in the Social or Biological Science groups during the Junior and Senior years, including the Major work.

Requirements for a Major: Anthropology 1, 2, and 3a (Geography 3a or Sociology 3a is equivalent of Anthropology 3a) Required: A minimum of 24 credits of advanced work, including Anthropology 115, 125, 141, 150a-b. Comprehensive Examination.

LOWER DIVISION REQUIREMENTS - See Page

Note: 1. Six credits from the following courses will satisfy the lower division requirements in the social studies: History 4a, b, 5a, b. Political Science 51a, b, Sociology, Geography or Anthropology 3a and Sociology or Geography 3b.

2. Students may satisfy the biological group requirements by completing a minimum of six semester credits from the following courses: Anatomy and Physiology 2, 10; Anthropology 1; Bacteriology 2a, b, 52; Botany 1, 2, 25; Psychology 1a, b; Zoology 1.

Note: Six credits of the courses that satisfy the biological and physical sciences requirements must be in courses that have laboratory.

*1	Intro. to Phy. Anthro.	3	M-S	1	SS 128	Snow
*2	Intro. to Cultural Anthro.	3	M-S	2	SS 128	Essene

Courses open only to Upper Division and Graduate Students:

103a, b, c, d	Indp. Work in Anthro.	3 ea	By Appt.		SS 125	Staff
116	Beginnings of Civilization	3	M-S	4	SS 128	Woodbury
150a, b, c, d	Tutorial Seminar	2 ea	By Appt.		SS 125	Staff
180	Anthro: Man and His Works	3	M-S	3	SS 128	Staff

Courses open only to Graduate Students:

201a, b	Seminar	1 ea	By Appt.		SS 125	Staff
---------	---------	------	----------	--	--------	-------

ART

Donald L. Weismann, Head of Department, Fine Arts 207

UPPER DIVISION REQUIREMENTS - Junior and Senior Years

Requirements in the Field of Concentration: 40 credits in advanced work in the field of Literature, Philosophy, and the Arts during the Junior and Senior years, including the Major work.

Requirements for a Major. Prerequisites: Art 30 and 61 (drawing), 62 (design), 35 or 36 (history of art). Required: A minimum of 26 credits of advanced work in art-12 credits in studio courses, 12 credits in history of art, 2 credits in the senior seminar plus a comprehensive examination in the Senior year.

Requirements for a Major in Art Education. Prerequisites: Art 30 and 61, 62. Required: A minimum of 18 credits in Art - Art 10a, b, 36, 65a, 65b, or 64a, 143, 157; and 22 credits in Education - Education 16, C44, 105, 110, 142, C147.

LOWER DIVISION REQUIREMENTS - See Page 20

10a	Pub. Sch. Art	2	TTh	7, 8, 9	FA 308	Weismann
				4 hrs. By Appt.		
10b	Pub. Sch. Art	2	WF	7, 8, 9	FA 308	
				4 hrs. By Appt.		
*61	Elem. Drawing	2	MWF	7, 8, 9	FA 206	Sternbergs
				1 hr. By Appt.		
65a, b	Painting	3 ea.	M-F	7, 8, 9	FA 302	Sternbergs

* Open to Freshmen

COLLEGE OF ARTS AND SCIENCES — Continued

Course Number	Subject	Credits	Days	Hour	Building and Room Number	Instructor
---------------	---------	---------	------	------	--------------------------	------------

ART - cont.Courses open only to Upper Division and Graduate Students:

143	Contemp. Art	3	M-S	4	FA 208	Amyx
155	Art in Elem. Schools	2	MTThF	5	FA 308	Weismann
157	Art in Sec. Schools	3	M-S	5	FA 309	Rannells
165a, b	Intermed. Painting	3 ea.	M-F	7, 8, 9	FA 202	Amyx
175a-d	Indp. Work: Hist. Criticism	3 ea.	15 hrs.	By Appt.	FA 205	Rannells
177a-d	Indp. Work: Painting, Print-making	3 ea.	15 hrs.	By Appt.	FA 202	Amyx

BACTERIOLOGY

M. Scherago, Head of Department, Funkhouser Biological Sciences, 104

UPPER DIVISION REQUIREMENTS - Junior and Senior Years

Requirements in the Field of Concentration: Forty Credits of advanced work in the field of Biological Sciences during the Junior and Senior years, including the major work.

Requirements for a Major: Prerequisites: Chem. 1a, b; Bact. 2b or 52 and 104.

Required: Two credits in Seminar and a minimum of 13 additional credits of advanced work in Bacteriology, including Bact. 125.

LOWER DIVISION REQUIREMENTS - See Page 20

The Biological Sciences. Students may satisfy the biological group requirements by completing a minimum of six semester credits from the following courses: Anatomy and Physiology 2, 10; Anthropology 1; Bacteriology, 2a, b, 52; Botany 1, 2, 25; Psychology 1a, b; Zoology 1.

Note: Six credits of the courses that satisfy the biological and physical sciences requirements must be in courses that have laboratory.

52-1	Prin. of Bact., Lec., all		MWThF	1	FB 124	Edwards
52-2	Prin. of Bact., Lab	4	MWThF	2,3	FB 208	Edwards
52-3	Prin. of Bact., Lab.		MWThF	7,8	FB 208	Edwards
	Prereq., or concurrent: Chem. 1b or 4b					
56-1	Bact. of Foods, Lec.		MTThF	1	FB 125	Weaver
56-2	Bact. of Foods, Lab	4	WS	1,2	FB 207	Hardin
			TTh	2,3		
	Prereq: Bact. 102 or 52; or 2b & Chem. 1b					
57-1	Bact. of Water & Sewage, Lec.	4	MWFS	3	FB 124	Weaver
57-2	Bact. of Water & Sewage, Lab.		MTThS	4,5	FB 207	Hardin
	Prereq: Bact. 102 or 52; or 2b & Chem. 1b					

Courses open only to Upper Division and Graduate Students

103-1	Pathogenic Bact., Lec.	4	MTWF	5	FB 124	Humphries
103-2	Pathogenic Bact., Lab.		MTWF	7,8	FB 206	Humphries
	Prereq: Bact. 102 or 52; or 2b & Chem. 1b					
104	Appl. Bact. Lab.	2	By Appt		FB 210	Humphries
	Prereq: Bact. 102 or 52; or 2b & Chem. 1b					
110a	Lab. Diagnosis, Lab.	3	M-S	1,2	FB 206	Hotchkiss
	Prereq: Preceded or accompanied by Bact. 103					
110b	Lab. Diagnosis, Lab.	3	By Appt.		FB 206	Hotchkiss
	Prereq: Preceded or accompanied by Bact. 103					
111-1	Gen. Path., Lec.		FS	3	FB 5	Hotchkiss
111-2	Gen. Path., Lab.	4	TTh	5	FB 5	Hotchkiss
			MWFS	4,5	FB 210	Hotchkiss
	Prereq: Anat. & Physiol. 10; Zool. 7b, 101b and 106; Bact. 103 and consent of Head of Department					
115a-f	Indp. Work	3 ea.	By Appt.		FB 104	Staff
	Prereq: Any course in Bact. above 2b.					
120a	Hospital Lab Practice	4	By Appt.		Good Sam. Hospital Lab.	
120b	Hospital Lab Practice	6	By Appt.		Good Sam. Hospital Lab.	
	Prereq: Bact. 110a and b					

Course Number	Subject	Credits	Days	Hour	Building and Room Number	Instructor
<u>BACTERIOLOGY - cont.</u>						
<u>Courses open only to Graduate Students:</u>						
201a-g	Res. in Bact., Lab.	5 ea.	By Appt.		FB 104	Staff
206-1	Bact. of Foods, Lec.	4	By Appt.		FB 125	Weaver
206-2	Bact. of Foods, Lab.		By Appt.		FB 207	Hardin
	Prereq: Bact. 102 or 52; or 2b; Chem. 1b					
207-1	Bact. of Water & Sewage, Lec.	4	By Appt.		FB 124	Weaver
207-2	Bact. of Water & Sewage, Lab.		By Appt.		FB 207	Hardin
	Prereq: Bact. 102 or 52; or 2b; Chem. 1b					
210	Clinical Mycology, Lab.	2	By Appt.		FB 119A	Hotchkiss
	Prereq: Chem. 130b; reading knowledge of one foreign language; preceded or accompanied by Bact. 125.					
220	Hist. of Bact., Lec.	2	By Appt.		FB 104A	Weaver
	Prereq: Bact. 125					
222	Adv. Gen. Bact.	4	By Appt.		FB 119A	Weaver & Hardin
	Prereq: Bact. 125; Chem. 130b					
224	Disinfectants & Antibiotics	3	By Appt.		FB 119A	Hotchkiss
	Prereq: Bact. 2b or 52 and 104; Chem. 130b					
270	Electron Microscopy	3	By Appt.		FB 5	Edwards
	Prereq: Phys. 3a, 3b					
272	Viruses & Rickettsiae	4	By Appt.		FB 5	Edwards
	Prereq: Bact. 125					

BOTANY

Herbert P. Riley, Head of Department, Funkhouser Biological Sciences, 220

UPPER DIVISION REQUIREMENTS - Junior and Senior Years

Requirements in the Field of Concentration: Forty credits of advanced work in the field of Biological Sciences during the Junior and Senior years, including the Major work.

Requirements for a Major. Prerequisites: Botany 2 or 1b. Required: a minimum of 20 credits of advanced work in Botany and the passing of a comprehensive examination covering chiefly the fields of morphology, taxonomy, and physiology.

LOWER DIVISION REQUIREMENTS - See Page 20

The Biological Sciences. Students may satisfy the biological group requirements by completing a minimum of six semester credits from the following courses: Anatomy and Physiology 2, 10; Anthropology 1; Bacteriology, 2a, b, 52, Botany 1, 2, 25; Psychology 1a, b; Zoology 1.

Note: Six credits of the courses that satisfy the biological and physical sciences requirements must be in courses that have laboratory.

*1	Gen. Bot.	4	M-Th	2	FB 213	Henrickson
			M-Th	4, 5	FB 217	Henrickson & McInteer
15	Local Flora	3	M-Th	2	FB 315	McInteer
	Prereq: Bot. 1 or 25					
19	Dendrology	2	M-Th	3	FB 315	McInteer
	Prereq: Bot. 1 or 25					

Courses open only to Upper Division and Graduate Students:

C103b	Plant Physiol.	3	M-F	3	FB 316	Henrickson
	Prereq: Bot. 103a or equiv.					
130	Intro. to Heredity	3	M-S	3	FB 213	Riley
	Prereq: 4 credits in the Biol. Sciences					
135	Plant Cytotaxonomy	3	M-S	4	FB 213	Riley
	Prereq: Bot. 15 and 134 or equiv.					

* Open to Freshmen

COLLEGE OF ARTS AND SCIENCES — Continued

Course Number	Subject	Credits	Days	Hour	Building and Room Number	Instructor
---------------	---------	---------	------	------	--------------------------	------------

CHEMISTRY

Lyle R. Dawson, Head of Department, Kastle, 105A

UPPER DIVISION REQUIREMENTS - Junior and Senior Years

Registration of Juniors or Seniors as majors in the Department of Chemistry is restricted to students having a grade-point average of 1.0 or more in all Chemistry courses.

Requirements in the Field of Concentration: Forty credits of advanced work in the field of Physical Sciences during the Junior and Senior years, including the major work.

Requirements for a Major: Prerequisites: 1a, 1b, 21a, 21b, and mathematics through the calculus. Required: 130a, 130b, 140a, 140b, 144a, 144b, 110a, 110b, 111, 133, 188a, 188b, and eleven credits to be chosen from the field of physical science.

LOWER DIVISION REQUIREMENTS - See Page 20

The Physical Sciences. Students will be permitted to take work in either one or two departments in order to satisfy the physical science requirement. Six or more credits can be taken from the following courses: Astronomy 51a, b; Chemistry 1a, b, 4a, b; Geology 50a, b, 14a, b, c, d; 20a, b, — with 50a, b, (50a is prerequisite for 50b), 3, 14a, b, c, d (with 3) 30a, b; Mathematics 5, 17, 18, 19; Physics 1a, b, 3a, b, 51a, b (51a is prerequisite for 51b). See note under Biological Sciences.

*1a	Gen. Chem., Lec.	5	MTThF	3	KH 201	Staff
*1a	Gen. Chem., Rec.		WS	3	KH 201	Staff
*1a	Gen. Chem., Lab.		MWFS	4, 5	KH 101	Staff
	Prereq: proficiency in arith. and algebra					
*1b	Gen. Chem., Lec.	5	MTThF	5	KH 201	Staff
*1b	Gen. Chem., Rec.		WS	5	KH 201	Staff
*1b	Gen. Chem., Lab.		MWF	2, 3	CA 100	Staff
*1b	Gen. Chem., Lab.		MW	4	CA 100	Staff
	Prereq: 1a					
*4a	Gen. Chem. for Stud. in Agr. and H. Ec., Lec.	4	MTThF	3	KH 201	Staff
*4a	Gen. Chem. for Stud. in Agr. and H. Ec., Rec.		WS	3	KH 201	Staff
*4a	Gen. Chem. for Stud. in Agr. and H. Ec., Lab.		TTh	4, 5	KH 101	Staff
	Prereq: proficiency in arith. and algebra					
*4b	Gen. Chem. for Stud. in Agr. and H. Ec., Lec.	4	MTThF	2	KH 201	Staff
*4b	Gen. Chem. for Stud. in Agr. and H. Ec., Rec.		WS	2	KH 201	Staff
*4b	Gen. Chem. for Stud. in Agr. and H. Ec., Lab.		TTh	7, 8	KH 101	Staff
	Prereq: 4a					
21a	Quant. Anal., Lec.	5	MTThF	1	KH 111	Stewart
21a	Quant. Anal., Lab.		MTThF	2, 3, 4	KH 113	Stewart
	Prereq: 1b or 2b					
21b	Quant. Anal., Lec.	4	MTThF	6	KH 111	Wagner
21b	Quant. Anal., Lab.		MTThF	7, 8	KH 113	Wagner
	Prereq: 21a					
30a	Organic Chem., Lec.	5	M-S	2	KH 214	Barkenbus
30a	Organic Chem., Lab.		MTThF	3, 4	KH 215	Barkenbus
	Prereq: 1b or 2b					
37	Organic Chem., Lec.	4	M-S	4	KH 209	Estes
37	Organic Chem., Lab.		TTh	5, 6	KH 215	Estes
	Prereq: 1b, 2b, or 4b					

Courses open only to Upper Division and Graduate Students:

110a	Adv. Inorganic Chem.	2	MTThF	2	KH B-14	Wagner
	Prereq: Quant. Anal. and Organic Chem.					
122	Instrumental Anal., Lec.	3	2 hrs. to be Arr.		KH 205	Wagner
122	Instrumental Anal., Lab.		12 hrs. to be Arr.		KH 115	Wagner
	Prereq: 21b					

*Open to Freshmen

Course Number	Subject	Credits	Days	Hour	Building and Room Number	Instructor
<u>CHEMISTRY - Cont.</u>						
130a	Organic Chem., Lec.	5	M-S	2	KH 214	Barkenbus
130a	Organic Chem., Lab. Prereq: 1b or 2b		MTThF	3,4	KH 215	Barkenbus
133	Qual. Organic Anal., Lec. & Lab. Prereq: 30b or 130b	3	18 hrs. By Appt.		KH 215	Barkenbus
141	Chemical Thermodynamics Prereq: 140b	3	M-S	3	KH B-14	Dawson
145	Colloid Chemistry Prereq: 140b	2	MTThF	4	KH B-14	Black
160	Ind. Chem. Prereq: 140b	3	M-S	5	KH 205	Meadow
181	Chemical Lit.	1	2 hrs. By Appt.		KH 111	Stewart
<u>Courses open only to Graduate Students:</u>						
239a	Topics in Organic Chem. Prereq: 130b	2	MTThF	2	KH 209	Estes
290a-1	Res. in Chem.	5 ea.	15 hrs. By Appt.		KH Arr.	Staff
<u>ECONOMICS</u>						
*2	Econ. Hist. of Eur.	3	M-S	3	WH 102	Jennings
*3	Econ. Hist. of the U.S.	3	M-S	2	WH 103	Jennings
*7a	Prin. of Acctg., Rec. Prin. of Acctg., Lab.	4	MTThF	1	WH 306	Cojeen
*7b	Prin. of Acctg., Rec. Prin. of Acctg., Lab.	4	M-Th	2,3	WH 306	Cojeen
16	Tutorial Work in Econ.	1	MTThF	4	WH 306	Tolman
51	Prin. of Econ.	3	M-Th	5,6	WH 306	Tolman
52	Prin. of Econ.	3	By Appt.		WH 104	Carter
102	Labor Econ. Prereq: Econ. 52	3	M-S	5	WH 102	Christian
104	Pub. Finance Prereq: Econ. 52	3	M-S	4	WH 301	Massie
105	Money and Banking Prereq: Econ. 52	3	M-S	4	WH 102	Carter
107	Statistical Method, Rec. & Lab.	3	M-S	2	SS 202	Hargreaves
112a-f	Indiv. Work in Econ.	1 ea.	M-S	1	WH 102	Tolman
153	Econ. of Consumption	2	MTThF	2	WH	Sullivan
155	Ind. Relations	3	M-S	4	WH 401	Cojeen
200	Bus. Econ.	3	M-S	3	WH 103	Sullivan
202a-f	Seminar	1 ea.	By Appt.			Carpenter
204	Surv. of Econ. Theory Since the Austrian School	3	M-S	4	SS 202	Hargreaves
218a	Econ. Theory	3	M-S	3	SS 202	Haynes
255	Adv. Personnel Mgt.	3	M-S	2	WH 102	Carter

EDUCATION

A student in the College of Arts and Sciences may elect toward the A.B. or B.S. degree a total of 30 credits from other colleges of the University.

ENGINEERING

A student in the college of Arts and Sciences may elect toward the A.B. or B.S. degree a total of 30 credits from other colleges of the University.

ENGLISH, SPEECH, AND DRAMATIC ARTS

W. S. Ward, Head of Department, Fine Arts, 109

UPPER DIVISION REQUIREMENTS - Junior and Senior Years

Requirements in the Field of Concentration: Forty credits of advanced work in the field of Literature, Philosophy, and the Arts, including the Major work.

Requirements for a Major: Prerequisites: English 1a, 1b; 3a, 3b. Required: A minimum of eighteen credits of advanced work in English.

* Open to Freshmen

COLLEGE OF ARTS AND SCIENCES — Continued

Course Number	Subject	Credits	Days	Hour	Building and Room Number	Instructor
---------------	---------	---------	------	------	--------------------------	------------

ENGLISH, SPEECH, AND DRAMATIC ARTS - cont.

LOWER DIVISION REQUIREMENTS - See Page 20

*1a-1	Eng. Comp.	3	M-S	2	McVH 203	
*1a-2	Eng. Comp.	3	M-S	3	McVH 209	
*1a-3	Eng. Comp.	3	M-S	3	McVH 204	
*1a-4	Eng. Comp.	3	M-S	4	McVH 203	
*1a-5	Eng. Comp.	3	M-S	5	McVH 200	
*1b-1	Eng. Comp.	3	M-S	2	McVH 209	
*1b-2	Eng. Comp.	3	M-S	3	McVH 210	
*1b-3	Eng. Comp.	3	M-S	4	FA 216	
3a	Surv. of Eng. Lit.	3	M-S	4	FA 222	Shine
3b	Surv. of Eng. Lit.	3	M-S	2	McVH 206	Cooke
*6-1	The Essen. of Speech	3	M-S	5	FA 226	Robinson
*6-2	The Essen. of Speech	3	M-S	2	FA 226	Blyton
*6-3	The Essen. of Speech	3	M-S	4	FA 226	Sterrett
30-1	Bus. Eng.	2	MTThF	5	McVH 203	Black
30-2	Bus. Eng.	2	MTThF	2	McVH 210	Black
*35	Stagecraft	2	MTThF	7	FA Guig.	Rhodes
	Stagecraft, Lab.		MTThF	8, 9	Shop	Rhodes
38	Oral Interpretation	3	M-S	2	FA 218	Sterrett

Courses open only to Upper Division and Graduate Students:

102	Intro. to the Study of the Eng. Lang.	3	M-S	5	McVH 204	Cutler
105	Chaucer	3	M-S	3	McVH 206	Moore
107a	Victorian Poets	3	M-S	2	FA 222	Shine
110b	Shakespeare: The Tragedies	3	M-S	2	McVH 204	Hatch
123a	Am. Lit. before 1830	3	M-S	3	McVH 200	Budd
137	Stage Prod. in Sch. and Community	3	M-S	5	FA Lab. Th.	Briggs
152	The Age of Pope	3	M-S	4	McVH 206	Cooke
155a	Contemp. Amer. Poetry	3	M-S	4	FA 224	Farquhar
157	Tchg. of Speech and Oral Eng.	3	M-S	4	FA 218	Blyton
172	Writing the One-Act Play	3	M-F	7	FA 222	Robinson
180	Eng. Comp. and Lit. for Teachers	3	M-S	3	FA 218	Ward

Courses open only to Graduate Students:

210	Seminar: Bibliographical Studies	3	M-F	8	McVH 204	Brady
224c	Seminar: Studies in Eng. Lit. from 1500-1660 (Donne and his Circle)	3	M-F	7	KL 412	Stroup

GEOGRAPHY

J. R. Schwendeman, Head of Department, Social Sciences, 226

UPPER DIVISION REQUIREMENTS - Junior and Senior Years

Requirements in the Field of Concentration: Forty credits, including the Major work in advanced courses in the field of Social Studies, and certain closely allied physical science fields.

Requirements for a Major. Prerequisites: Geography 1, 2, 3a-b or 10. Requirements: A minimum of 18 credits of advanced work in Geography varied according to the curriculum elected by the student, but including at least three credits in Geography 132a-d.

LOWER DIVISION REQUIREMENTS - See Page 20

Note: Six credits from the following courses will satisfy the lower division requirements in the social studies: History 4a, b, 5a, b, Political Science 51a, b, Sociology, Geography or Anthropology 3a and Sociology or Geography 3b.

*3a	Societies Around the World	3	M-S	2	SS 231	Field
*10	Econ. Geog. Surv.	3	M-S	3	SS 228	

* Open to Freshmen

Course Number	Subject	Credits	Days	Hour	Building and Room Number	Instructor
---------------	---------	---------	------	------	--------------------------	------------

GEOGRAPHY - cont.

Courses open only to Upper Division and Graduate Students:

100	Regional Geog. of Anglo - America	2	M-Th	4	SS 228	
133a	Special Prob. (Anglo-America)	1	By Appt.		SS	
101	Geog. of Ky.	2	M-Th	1	SS 229	Schwendeman
133b	Special Prob. (Ky.)	1	By Appt.		SS	Schwendeman
105	Regional Geog. of Australia and the Pacific Is.	2	M-Th	3	SS 229	Field
133f	Special Prob. (Australia and the Pacific Is.)	1	By Appt.		SS	Field
132a, b, c, d	Indp. Work in Geog. (Majors only)	3 ea.	By Appt.		SS	Staff
130	Regional Field Observation	3	"International Cooperative Summer School in Geography" in cooperation with the Monterrey Technological Institute at Monterrey, Mexico — six weeks, July 14-Aug. 23 — including field tours in Mexico. All students intending to enroll for this International Cooperative Summer School in Geography must first be regularly enrolled in the University of Kentucky summer school. Students can then take a 4 week course at the University in any such course available. In Geography, 101, Geography of Kentucky is offered. At Monterrey Tech 6 semester hours must be taken, 3 of which must be in geography. These credits can be transferred to the University of Kentucky since Monterrey Tech is a fully accredited institution. While enrollment at the University of Kentucky summer school is required for International Cooperative Summer School in Geography credit, it is not necessary to attend U.K. summer school. It is only necessary to attend the Cooperative Summer School in Monterrey. The all-expense cost of this International Cooperative Summer School in Geography from the time we leave Lexington July 10 until we return Aug. 27 is \$315.00 of which \$230.00 pays all expenses including tuition at Monterrey Tech. The balance (\$85.00) is all-expense round trip costs (food, lodging, border charges, transportation) Lexington to Lexington. No more than 20 students may be enrolled in this International Cooperative Summer School in Geography — also no less than 12 students.			

Important Note: Sears-Roebuck Foundation is sponsoring this International Cooperative Summer School in Geography by providing for 12 scholarships, 5 of which cover the entire cost — \$230.00 Monterrey expenses — and the remaining 7 most of the cost at Monterrey. Cost of instruction is also partially provided by the Sears-Roebuck Foundation.

If interested in the International Cooperative Summer School in Geography, please write for folder for particulars. Also state if you care to apply for a scholarship.

GEOLOGY

A. C. McFarlan, Head of Department, Miller, 209

UPPER DIVISION REQUIREMENTS - Junior and Senior Years

Requirements in the Field of Concentration: Forty credits in the field of Physical and Biological Sciences, including the Major work, in courses not open to Freshmen.

Requirements for a Major: Geology 10a, b; 30a, b; 101a, b; 112; 107a, b; 123a, b; 126a, b; 118a; 129; 130; Field Work; A summer field course, Geology 118a is required of major students for graduation. Local field work is offered throughout the year. Comprehensive examination in senior year.

LOWER DIVISION REQUIREMENTS - See Page 20

The Physical Sciences. Students will be permitted to take work in either one or two departments in order to satisfy the physical science requirement. Six or more credits can be taken from the following courses: Astronomy 41a, b; Chemistry 1a, b, 4a, b; Geology 50a, b, 14a, b, c, d, 20a, b, — with 50a, b, (50a is prerequisite for 50b), 3, 14a, b, c, d, (with 3) 30a, b; Mathematics 5, 17, 18, 19; Physics 1a, b, 3a, b, 51a, b (51a is prerequisite for 51b). See note under Biological Sciences.

*3	Elem. Geology	3	M-Th	3	MH 108	Stokley
3-11	Lab. Conf.		MW	4	MH 101A	Staff
3-12	Lab. Conf.		TTh	4	MH 101A	Staff

* Open to Freshmen

Course Number	Subject	Credits	Days	Hour	Building and Room Number	Instructor
<u>GEOLOGY - cont.</u>						
12a	Elem. Geology for Engr.	3	M-Th	3	MH 108	Stokley
12a-11	Lab. Conf.		MW	4	MH 101A	Staff
12a-12	Lab. Conf.		TTh	4	MH 101A	Staff
*50a	Outlines of Geology	3	M-S	2	MH 108	Stokley
†23a, b	Elem. Field Wk. in Regional Geology	6 ea.	June 16 to August 9			McFarlan Nelson Fisher

Courses open only to Upper Division and Graduate Students:

Field Camp in Crested Butte, Colorado

†118a, b	Field Wk. in Regional Geology	8 ea.	June 16 to August 9	McFarlan Nelson Fisher
†C118a, b	Field Wk. in Regional Geology	6 ea.	June 16 to August 9	McFarlan Nelson Fisher

GERMAN LANGUAGE AND LITERATURE

A. E. Bigge, Head of Department, Miller, 303-A

UPPER DIVISION REQUIREMENTS - Junior and Senior Years

Requirements in the Field of Concentration: Forty credits in the field of Literature, Philosophy, and the Arts, including the Major work, in courses not open to freshmen.

Requirements for a Major. Prerequisites: Junior standing, 1a, 1b, 2a, 2b. Required: A minimum of 18 credits of work independent of Junior and Senior Tutorial Courses. Majors must also pass a final comprehensive examination.

Note: No credit will be given for German 1a until German 1b has been completed.

No student should enroll in two beginning language courses at the same time.

A student who presents one unit of high school foreign language will receive credit for the first year of college work if repeated. A student who presents 2 units of high school foreign language will receive credit provided he makes at least a B standing in these two courses. All appointment students will meet in Room 303-A, Miller Hall, at 2:00 on Wednesday, June 24.

LOWER DIVISION REQUIREMENTS - See Page 20

*1a-1	Elem. German	3	M-S	5	MH 310	Whitaker
*1a-2	Elem. German	3	M-S	4	MH 302	Hegeman
C-1a	Elem. German	0	M-W	7-9 pm	FA 2	Binger
This course is designed to meet the needs of upper division and graduate students who are preparing for the graduate reading examination. There is no prerequisite.						
*1b-1	Simple Read. & Pronun.	3	M-S	2	MH 309	Binger
Prereq: 1a or 1 HS unit						
2a	Translation & Rapid Reading					
Prereq: 1b						
2b	Translation & Rapid Reading	3	M-S	2	MH 310	Bigge
Prereq: 2a						
8	Elem. Aural-Oral Pract.					
Prereq: 1a						
10a,b	Elem. Conversation & Comp.					
Prereq: 1b, 10a						
20a,b	Readings in Med. German	3 ea.	M-S	2	MH 302	Ubben
Prereq: 1b, 20a						
21a, b	Readings in Chem. German	3 ea.	M-S	1	MH 302	Ubben
Prereq: 1b, 21a						
52	Intro. to Classical & 19th Cent. Ger. Lit.					
Prereq: 2b						
		3	M-S	3	MH 303A	Bigge

* Open to Freshmen

† See special announcement

Course Number	Subject	Credits	Days	Hour	Building and Room Number	Instructor
---------------	---------	---------	------	------	--------------------------	------------

GERMAN LANGUAGE AND LITERATURE - cont.

75	Surv. of Ger. Lit. in Eng. Translation	2	MThF	5	MH 302	Hegeman
----	---	---	------	---	--------	---------

Courses open only to Upper Division and Graduate Students

105a-f	Indp. Work in German	3 ea	By Appt		MH	Staff
112	Proseminar in Kleist	3	By Appt.		MH	Whitaker

HISTORY

Thomas D. Clark, Head of Department, Frazee, 203

UPPER DIVISION REQUIREMENTS - Junior and Senior Years

Requirements in the Field of Concentration: Forty semester hours in advanced work in the field of social or humanistic studies, during the junior and senior years, including the major work.

Requirements for a Major. Prerequisites: History 2a and 2b, or 4a and 4b, or 5a and 5b. Required: A minimum of 18 semester hours of advanced courses in History plus the Senior Seminar.

LOWER DIVISION REQUIREMENTS - See Page 20

Note: Six credits from the following courses will satisfy the lower division requirements in the social studies: History 5a, b, 4a, b; Sociology, Geography or Anthropology 3a and Sociology or Geography 3b, Pol. Sci. 51a, b.

*4a	Mod. Eur. to the Fr. Rev.	3	M-S	2	FH 202	Lunde
*4b-1	Mod. Eur. since the Fr. Rev.	3	M-S	1	FH 204	McCloy
*5a-1	Hist. of the U.S. thru 1865	3	M-S	3	FH 202	Gilliam
*5a-2	Hist. of the U.S. thru 1865	3	M-S	5	FH 201	Wall
*5a-3	Hist. of the U.S. thru 1865	3	M-S	1	FH 202	Taylor
*5a-4	Hist. of the U.S. thru 1865	3	M-S	1	FH 302	
*5b-1	Hist. of the U.S. since 1865	3	M-S	3	FH 301	Taylor
*5b-2	Hist. of the U.S. since 1865	3	M-S	4	FH 201	
40	Hist. of Ky.	3	M-S	3	FH 302	Clark

Courses open only to Upper Division and Graduate Students

105a	Colonial America	3	M-S	1	FH 201	Gilliam
124a	Social & Cultural Hist. of the U.S. to 1865	3	M-S	2	FH 201	England
132	Hist. of Am. Agr.	3	M-S	3	FH 201	Wall
151b	The Am. Frontier	3	M-S	4	FH 202	Clark
179	Mod. Eur.	3	M-S	4	FH 301	Lunde
180a	Hist. of the Old South	3	M-S	3	FH 204	Eaton
180b	The South in the Civil War and Reconstruction	3	M-S	5	FH 202	Kirwan

Courses open only to Graduate Students

247b	Seminar in U.S. Hist.	3	MW	7	FH 202	Eaton
320c	Seminar in Mod. Eur. Hist.	3	TTh	7	FH 204	McCloy

HOME ECONOMICS

A student in the College of Arts and Sciences may elect toward the A.B. or B.S. degree a total of 30 credits from other colleges of the University.

HUMANITIES

To satisfy the lower division requirements in the Humanities, students in the College of Arts and Sciences must earn four credits in literature and philosophy (Humanities A, B, or C) and two credits in Art and Music (Humanities D or E). These courses should be taken during the sophomore year, and two courses from A, B, or C may not be taken simultaneously.

*Open to Freshmen

COLLEGE OF ARTS AND SCIENCES — Continued

Course Number	Subject	Credits	Days	Hour	Building and Room Number	Instructor
<u>HUMANITIES - cont.</u>						
A	Classicism: Graeco-Roman; Mod. Eur.	2	MTThF	2	FA 216	Kuiper
B	The Renaiss: Romanticism	2	MTThF	3	MH 302	Hegeman
C	Realism and Naturalism: The Contemp.	2	MTThF	4	McVH 204	Brady
D	Art: The Renaiss. to the Present	2	MTThF	3	FA 208	Rannells
E	Music: The Renaiss. to the Present	2	M-F	4	FA 17	Kinney

HYGIENE AND PUBLIC HEALTH

Dr. J. S. Chambers, Head of Department, Health 105

UPPER DIVISION REQUIREMENTS - Junior and Senior Years

Requirements in the Field of Concentration: Forty credits in the field of Biological Sciences and Social Studies (Soc., Social Work, Psy., Political Science) including the Major work, in courses not open to Freshmen.

Requirements for a Major. Prerequisites: 12 credits in the Biological Sciences. Required: A minimum of 15 credits of advanced work in Hygiene and Public Health.

LOWER DIVISION REQUIREMENTS - See Page 20

*9	Fund. of Hlth.	2	M-Th.	3	FB B-8	Hamilton
----	----------------	---	-------	---	--------	----------

Courses open only to Upper Division and Graduate Students

100a	Pub. Hlth.	3	M-S	4	FB B-3	Hamilton
100b	Pub. Hlth.	3	M-S	3	FB B-3	Heinz
110	Hlth. Ed.	3	M-S	5	FB B-8	Heinz
111a-f	Indp. Work in Hyg. & Pub. Hlth.	3 ea	By Appt.		HB 104	Heinz

JOURNALISM-SEE SCHOOL OF JOURNALISM on pageLAW

A student in the College of Arts and Sciences may elect toward the A.B. degree a total of 30 credits from other colleges of the University. However, election of law courses is restricted. A 1.3 standing on all work attempted is required to enter the College of Law; a standing of 1.0 is required on the professional work on the combined Arts-Law Degree.

For the combined Arts-Law course see the University Catalog for requirements. A student must have a total of 128 credits for the A.B. degree. In the junior year check with the Dean of the College of Arts and Sciences and the Registrar's Office.

DEPARTMENT OF LIBRARY SCIENCE

Leslie I. Poste, Head of Department, King Library, 416

UPPER DIVISION REQUIREMENTS Junior and Senior Years

Requirements in Field of Concentration: Forty credits of advanced work in the field of Literature, Philosophy, and the Arts, or acceptable equivalent, including the Major work.

Requirements for a Major. Prerequisites: Junior or Senior standing, with average scholastic record for the first two college years. Prospective majors should consult with the Head of the Department regarding courses to be taken during

* Open to Freshmen

Course Number	Subject	Credits	Days	Hour	Building and Room Number	Instructor
---------------	---------	---------	------	------	--------------------------	------------

LIBRARY SCIENCE - cont.

the first two years of college. A broad academic program is recommended.
Required: A minimum of 21 semester hours.

LOWER DIVISION REQUIREMENTS - See Page 20

Courses open only to Upper Division and Graduate Students:

101a, b, c, d	Indp. Work	1 ea.	By Appt.			Staff
110	The Library in the Sch.	3	M-S	2	J 208	Wofford
127a	Bks. & Related Mat. for Children & Young People	3	M-S	4	J 208	
127b	Bks. & Related Mat. for Children & Young People	3	M-S	4	KL 314	Martin
129	Cataloging & Classification	3	M-S	2	KL 314	Whitten
133a	Reference & Bibliography	3	M-S	5	KL 314	Whitten
139	Library Practice	3	By Appt.			Poste, Roser
145	Org. of Library Mat.	3	M-S	3	KL 314	
152	Bk. Select.	3	M-F	7	J 208	Martin

Courses open only to Graduate Students:

212	The Pub. Library	2	MTWTh	8	KL 314	Poste
227	Prob. in Reading for Children & Young People	2	MTThF	7	KL 314	Wofford
254	Seminar	2	TWThF	3	J 208	Poste

MATHEMATICS AND ASTRONOMY

H. H. Downing, Head of Department, McVey, 121

UPPER DIVISION REQUIREMENTS - Junior and Senior Years

Requirements in the Field of Concentration: Forty credits of advanced work in the field of Physical Science during the Junior and Senior years, including the Major work.

Requirements for a Major. Prerequisites: Mathematics and Astronomy 2, 5 or 17, 18, 19, 20a, 20b. Required: A minimum of 18 credits of advanced work in mathematics, including Mathematics and Astronomy 25, 26, 27, and one course in Applications.

Requirements for Graduate Work: Graduate students must have had at least 12 credits of mathematics beyond integral calculus before counting work toward an advanced degree.

LOWER DIVISION REQUIREMENTS - See Page 20

The Physical Sciences. Students will be permitted to take work in either one or two departments in order to satisfy the physical science requirement. Six or more credits can be taken from the following courses: Astronomy 51a, b; Chemistry 1a, b, 4a, b; Geology 50a, b, 14a, b, c, d, 20a, b, — with 50a, b, (50a is prerequisite for 50b) 3, with 14a, b, c, d (with 3) 30a, b; Mathematics 5, 17, 18, 19, Physics 1a, b, 3a, b, 51a, b, (51a is prerequisite for 51b). See note under Biological Sciences.

Mathematics

*1-1	Basic Math. Agr. 20, Others 5	3	M-S	1	McVH	Brown, R. C.
*1-2	Basic Math.	3	M-S	4	McVH 129	Burnette
*2	Solid Geom.	3	M-S	5	McVH 104	Zaring
*5-1	Coll. Algebra	5	M-F	1, 2	McVH 103	Downing Wells
*5-2	Coll. Algebra	5	M-F	4, 5	McVH 106	Moore Royster
*15	Math. of Fin.	3	M-S	3	McVH 103	Wheeler

* Open to Freshmen

COLLEGE OF ARTS AND SCIENCES — Continued

Course Number	Subject	Credits	Days	Hour	Building and Room Number	Instructor
<u>MATHEMATICS AND ASTRONOMY - cont.</u>						
Prereq: for 17. 1 unit high school algebra and a score of E on University Placement Test.						
*17	Coll. Algebra	3	M-S	3	McVH 109	Leser Royster
Prereq. for 18: 1 unit high sch. plane geom. and M&A 5 or a score of E on University Placement Test.						
*18-1	Plane Trig.	3	M-S	1	McVH 100	Vanaman
*18-2	Plane Trig.	3	M-S	2	McVH 106	Ward South
Prereq. for 19: M&A 5 or 17 and 18						
*19-1	Plane Anal. Geom.	3	M-S	2	McVH 100	Goodman Pence
*19-2	Plane Anal. Geom.	3	M-S	3	McVH 107	Davis Cowling
Prereq. for 20a: M&A 2 or 1/2 unit of high school geometry and M&A 19						
20a	Diff. Calc.	4	M-S	1	McVH 107	Brown, M.C.
Prereq. for 20b: M&A 20a						
20b	Int. Calc.	4	M-S	5	McVH 109	Leser
Prereq. for 35: M&A 20b						
35	Diff. Equas. for Engrs.	2	MTThF	5	McVH 107	Brown, M.C.

Courses open only to Upper Division and Graduate Students:

Consult the instructor for prerequisites for the following courses:

25	Intermed. Calculus	3	M-S	2	McVH 109	Rose
101a-f	Indp. Work in Math.	3 ea	By Appt.			
102	Vector Anal.	3	M-S	3	McVH 104	Goodman
119	Coll. Geom.	3	M-S	4	McVH 100	Pence

Courses open only to Graduate Students:

201a-f	Indp. Work in Math.	3 ea	By Appt.			Sr. Staff
206	Theory of Groups	3	M-S	4	McVH 103	Ward
C220a,b	Math. Seminar (Statistics)	3 ea	M-S	3	McVH 106	South
221	Tensor Anal.	3	M-S	2	McVH 104	Cowling

Astronomy

53	Intro. Astronomy	3	M-S	4	McVH 109	Davis
	Observatory (Open House)	0	T	8-9:30	Observatory	Davis

MUSIC

Edwin E. Stein, Head of Department, Fine Arts, 16a

UPPER DIVISION REQUIREMENTS - Junior and Senior Years

Requirements in the Field of Concentration: Forty semester hours of advanced work in the field of Literature, Philosophy, and the Arts during the Junior and Senior years including the major work.

Requirements for a Major. Prerequisites: Junior standing: Humanities E; Music 11a, b; 33a, b; 34a, b; Applied Music - 8 to 12 semester hours. Required: A minimum of 30 semester hours of advanced work in music as prescribed by the Department of Music. All Music Majors are required to take part in two performing organizations each semester. A comprehensive is required in the Senior year.

Fees for Applied Music: All applied music (piano, voice, organ, instrumental) requires a fee of \$25 for two one-half hour lessons per week. Practice room fee is \$6 per summer term. Rental of instruments for use in Music 46 courses is \$3 per summer term per course. Rental of orchestral or band instruments for other instruction is \$6 per term, payable by veterans and non-veterans. All fees are due before instruction begins at the beginning of the Summer Term.

* Open to Freshmen

Course Number	Subject	Credits	Days	Hour	Building and Room Number	Instructor
---------------	---------	---------	------	------	--------------------------	------------

MUSIC - cont.

Note: Enrollment fee for non-University students (in addition to the above fees) is \$5.25 per credit hour.

LOWER DIVISION REQUIREMENTS - See Page 20

*4a	Pub. Sch. Music (for non Music Majors)	2	M-Th	4	FA 4	
*4b	Pub. Sch. Music (for non-Music Majors)	2	M-Th	4	FA 6	Lewis
*22a,b	Band (Freshman)	2 ea	MW	9,10	FA 22	Lutz
23a,b	Band (Sophomores)	2 ea	MW	9,10	FA 22	Lutz
28a,b	Concert Band (Juniors)	2 ea	MW	9,10	FA 22	Lutz
29a,b	Concert Band (Seniors)	2 ea	MW	9,10	FA 22	Lutz
*46j	Class Instruct. in French Horn	1	By Appt.		FA 22	
*46m	Class Instruct. in Bassoon	1	By Appt.		FA 22	Lutz
*49a-h	University Chorus	1	M-Th	8	FA 6	Lewis
*15a-q	Appl. Music - Piano	2 ea	By Appt.		FA 147	Patch
					145	Montgomery
					149	Cullis
*C15a-q	Appl. Music - Piano	1 ea	By Appt.		FA 147	Patch
					145	Montgomery
					149	Cullis
16a-q	Appli. Music - Strings	2 ea	By Appt.		FA 29	Wright
					27	Kinney
					25	Rabin
*C16a-q	Appl. Music - Strings	1 ea	By Appt.		FA 29	Wright
					27	Kinney
					25	Rabin
*17a-q	Appl. Music - Voice	2 ea	By Appt.		FA 141	Kiviniemi
					151	Holloway
*C17a-q	Appl. Music - Voice	1 ea	By Appt.		FA 141	Kiviniemi
					151	Holloway
*18a-q	Appl. Music - Organ	2 ea	By Appt.		FA 130	Blackburn
*C18a-q	Appl. Music - Organ	1 ea	By Appt.		FA 130	Blackburn
*31a-q	Appl. Music - Woodwind Instr.	2 ea	By Appt.		FA 20a	Lutz
					16a	Stein
*C31a-q	Appl. Music - Woodwind Instr.	1 ea	By Appt.		FA 20a	Lutz
					16a	Stein
*32a-q	Appl. Music - Brass & Percussion Instruments	2 ea	By Appt.		FA 33a	Prindl
*C32a-q	Appl. Music - Brass & Percussion Instruments	1 ea	By Appt.		FA 33a	Prindl

Courses Open only to Upper Division and Graduate Students :

102b	Vocal Pedagogy	2	M-Th	7	FA 4	Kiviniemi
103a	Piano Pedagogy	1	F	2,3	FA 2	Montgomery
106a	Piano Lit.	2	M-Th	3	FA 2	Patch
107a	Vocal Lit.	2	M-Th	5	FA 2	Holloway
108b	Hist. & Lit. of the Organ	2	M-Th	7	FA 130	Blackburn
118	Marching Band Tech.	2	M-Th	6	FA 20	Lutz
120b	Surv. of Music Lit. (for non-Music Majors)	2	M-Th	3	FA 4	Kinney
123	Surv. of Contemp. Music	2	M-Th	5	FA 6	Kinney
124a, b, c,	Opera Workshop	1 ea	M-Th	8	FA 17	Kiviniemi Holloway

Courses open only to Graduate Students:

203	Choral Lit. and Tech.	2	M-Th	2	FA 2	Lewis
204	Adv. Band Tech.	2	M-Th	2	FA 4	Prindl
205	Medieval and Renaiss. Music Instrumental	2	M-Th	5	FA 16	Stein
214	Adv. Instrumental Conducting	2	By Appt.		FA 33	Prindl
215a-f	Appl. Music - Piano	2 ea	By Appt.		FA 147	Patch
					145	Montgomery

* Open to Freshmen

COLLEGE OF ARTS AND SCIENCES — Continued

Course Number	Subject	Credits	Days	Hour	Building and Room Number	Instructor
<u>MUSIC</u> - cont.						
C215a-f	Appl. Music - Piano	1 ea	By Appt.		FA 147 145	Patch Montgomery
216a-f	Appl. Music - Strings	2 ea	By Appt.		FA 29 27 25	Wright Kinney Rabin
C216a-f	Appl. Music - Strings	1 ea	By Appt.		FA 29 27 25	Wright Kinney Rabin
217a-f	Appl. Music - Voice	2 ea	By Appt.		FA 141 151	Kiviniemi Holloway
C217a-f	Appl. Music - Voice	1 ea	By Appt.		FA 141 151	Kiviniemi Holloway
218a-f	Appl. Music - Organ	2 ea	By Appt.		FA 130	Blackburn
C218a-f	Appl. Music - Organ	1 ea	By Appt.		FA 130	Blackburn
231a-f	Appl. Music - Woodwind Instruments	2 ea	By Appt.		FA 20	Lutz
C231a-f	Appl. Music - Woodwind Instruments	1 ea	By Appt.		FA 20	Lutz
232a-f	Appl. Music - Brass & Percussion	2 ea	By Appt.		FA 33a	Prindl
C232a-f	Appl. Music - Brass & Percussion	1 ea	By Appt.		FA 33a	Prindl
224a	Adv. Musical Anal.	2	M-Th	4	FA 2	Wright
242	Adm. and Supervision of Pub. Sch. Music	3	M-S	3	FA 6	

PHILOSOPHY

John Kuiper, Head of Department, Frazee, 103

UPPER DIVISION REQUIREMENTS - Junior and Senior Years

Requirements in the Field of Concentration: Forty credits in courses not open to Freshmen, which may be elected in either the field of Literature, Philosophy and the Arts, or the field of Social Studies.

Requirements for a Major. Prerequisites: Six credits in Philosophy including Philosophy 21. Required: A minimum of 15 credits in Philosophy; Philosophy 35a,b and a comprehensive examination in the senior year.

LOWER DIVISION REQUIREMENTS - See Page 20

21	Intro. to Phil.	3	M-S	1	FH 205	Kuiper
31	Elem. Logic	3	M-S	3	FH 205	Melzer
51	Ethics	33	M-S	2	FH 205	DeBoer

Courses open only to Upper Division and Graduate Students:

120	Great Religions	3	M-S	4	FH 205	DeBoer
190	Prob. of Phil.	3	M-S	F	FH 205	Melzer

Courses open only to Graduate Students:

220a, b,c,d	Res. in Phil.	3 ea	By Appt.		FH 103	Staff
----------------	---------------	------	----------	--	--------	-------

PHYSICAL EDUCATION

Don Cash Seaton, Head of Department, Alumni Gymnasium

SERVICE (Required) COURSES:

Undergraduate students who have not completed the physical education requirements must enroll in one of the following courses:

A. Orientation in Physical Education (P.E.1) - for new students. (not offered in Summer)

B. Adapted Physical Education (P.E.2) - for students assigned to corrective work

Course Number	Subject	Credits	Days	Hour	Building and Room Number	Instructor
---------------	---------	---------	------	------	--------------------------	------------

PHYSICAL EDUCATION - cont.

by the Health Department and for women students who failed the posture test. (not offered in summer.)

- C. Weightlifting and Conditioning (P.E. 29)-for men students who failed the physical fitness test in P.E.1 (not offered in summer)
- D. Sports Classes (P.E. 3-28)-for students who have satisfied the requirements in A, B, or C. (Men students are expected to learn one indoor individual sport, one outdoor individual sport, and one team sport. Women students are expected to learn one individual sport, one team sport, and some form of the dance.)

LOWER DIVISION REQUIREMENTS - See Page 20 20

*11	Golf (Men & Women)	0	MWF	7,8	AG	Staff
*15	Horseback Riding (Men & Women)	0	By Appt.		AG	Ryen
†16	Horsemanship (Men & Women)	1	By Appt.		AG	Ryen
*21	Swimming for Beginners (Men & Women)	0	M-F	3	Pool	Staff
†22	Adv. Swimming (Men & Women)		M-F	4	Pool	Staff
*24	Tennis (Men & Women)	0	MWF	4,5	Courts	Staff
*28	Volleyball	0	M-F	6	AG	McCubbin

Recreation (Open to all Students and Faculty)

Archery	0	W	3-5:00	WG	Staff
Badminton	0	M	1-3:00	AG	Staff
Folk Dancing	0	Th	7:30-10	WG	Lewis
Golf	0	T	12:30-1:30	MC	Staff
Horseback Riding	0	By Appt.		AG	Ryen
Social Dancing	0	T	7:30-10:00	WG	Staff
Swimming (Children-faculty, staff & students)	0	M-S	8:00-9:00	Pool	Staff
Swimming (Men & Women)	0	M-S	3:00-5:00	Pool	Staff
Tennis	0	M-F	3:00-5:00	Courts	Staff
Volleyball	0	MWF	12:00-1:30	AG	McCubbin

PROFESSIONAL COURSES

UPPER DIVISION REQUIREMENTS - Junior and Senior Years

Requirements in Field of Concentration: Forty credits of advanced work in the field of Biological Sciences, including the major work.

Requirements for a Major. Prerequisites: For Men And Women Anatomy and Physiology 4 and 5; Zoology 1; Sociology 3a or b or 40; English 6, 32 or 159; Hygiene 9; Physical Education 40, 51. For Men - Physical Education 41, 42, 43, 45, 56. For Women - Hygiene 7; Physical Education 46, 47, 49, 57, 90.

Required: For Men And Women - Home Economics 101; Hygiene 110; Physical Education 61, 62a, b, 80, 140, 143, 165, 172, 180. For Men - Physical Education 52, 70. For Women - 53, 190. (For teaching certificate; Education 148, C147, 105, 169a, b, P.E. 60, 144.)

Only 6 hours of Education count in Field of Concentration in A & S.

*C42	Football Coaching Fund.	3	By Appt.		MC	Bryant
49	Indiv. Sports for Women (Tennis, Golf)	2	M-Th	4,5	WG	Carr & Lewis
51	Co-recreational Activities (Bowling, Archery, Badminton)	3	M-S	1,2	AG	Carr, Seaton McCubbin
52	Swimming & Diving (for Men)	2	M-Th	6,7	MC	Staff

* Open to Freshmen † Open only to those who have completed their physical education requirements.

COLLEGE OF ARTS AND SCIENCES — Continued

Course Number	Subject	Credits	Days	Hour	Building and Room Number	Instructor
<u>PHYSICAL EDUCATION - cont.</u>						
53	Swimming & Diving (for Women)	2	M-Th	6,7	MC	Staff
<u>Courses open only to Upper Division And Graduate Students:</u>						
60	Phy. Ed. in the Elem. Sch.	3	M-S	4	WG	Lewis
142	Coaching Adv. Football	2	M-Th	4	AG 9	Bryant & McCubbin
143	Hist. & Prin. of Phy. Ed.	3	M-S	3	AG 106	Hackensmith
144	Phy. Ed. in the Sec. Sch.	3	M-S	2	WG	Carr & Clay
154	Adv. Aquatics (for Men)	1	By Appt.		MC	Staff
155	Adv. Aquatics (for Women)	1	By Appt.		MC	Staff
158b	Sports Officiating for Men	1	By Appt.		AG 9	Staff
165	Safety in Phy. Ed.	2	M-Th	5	AG 106	Seaton
180	Adm. & Org. of Recreation	3	M-S	4	MG 2	Kauffman
181	Camping in Ed.	2	M-Th	2	MG 2	Kauffman
182	Intramural Sports	2	M-Th	8 and Appt.	MG 4	McCubbin
†195	Folk Dance Workshop	2	M-Th	3	WG	Carr & Lewis
<u>Courses open only to Graduate Students:</u>						
240	Grad. Seminar in Phy. Ed.	2	M-Th	1	AG 101	Clay
241	Current Studies & Trends in Hlth. & Phy. Ed.	3	By Appt.		MG 3	Seaton
243	Prob. in the Adm. of Athletics	2	M-Th	3	AG 1	Clay
244	Test & Measurements in Hlth. & Phy. Ed.	3	M-S	2	AG 101	Hackensmith
280	Prob. in Recreation	2	By Appt.		MG 2	Kauffman

PHYSICS

O. T. Koppius, Head of Department, Pence, 101

UPPER DIVISION REQUIREMENTS - Junior and Senior Years

Requirements in the Field of Concentration: Forty credits of advanced work in the field of Physical Sciences, including the Major work.

Requirements for a Major. Prerequisites: Physics 3a, 3b, Mathematics 17, 18, and 19. Required: Mathematics 20a, 20b; a minimum of 19 credits of advanced work in Physics, including at least two advanced laboratory courses; and a comprehensive examination in the senior year.

LOWER DIVISION REQUIREMENTS - See Page 20

The Physical Sciences. Students will be permitted to take work in either one or two departments in order to satisfy the physical science group requirement. The student may choose six or more credits from the following courses: Astronomy 51a, b; Chemistry 1a, b, 4a, b, Geology 50a, b, 14a, b, c, d, 20a, b (with 50a, b) 3, 14a, b, c, d (with 3) 30a, b; Mathematics 5, 17, 18, 19; Physics 1a, b, 3a, b, 51a, b (51a is prerequisite for 51b). See note under Biological Sciences.

1a-1	Gen. Elem. Phys., Lect		TFS	1	Pence 201
1a-1	Gen. Elem. Phys., Rec.	5	M-S	2	Pence 309
1a-11	Gen. Elem. Phys., Lab.		MWT	1	Pence 305
	Prereq: High Sch. Alg. & Geom.				
3a-1	Gen. Coll. Phys., Lect		TF	3	Pence 201
3a-1	Gen. Coll. Phys., Rec.	6	M-S	2	Pence 208
3a-11	Gen. Coll. Phys., Lab.		MWThS	3,4	Pence 105
	Prereq: Math. 19; Chem. 1b				
3b-1	Gen. Coll. Phys., Lect		MTh	2	Pence 201
3b-1	Gen. Coll. Phys., Rec.	6	M-S	3	Pence 208
3b-11	Gen. Coll. Phys., Lab.		TWFS	1,2	Pence 107
	Prereq: Phys. 3a or equiv.				

†Dates to be announced

Course Number	Subject	Credits	Days	Hour	Building and Room Number	Instructor
---------------	---------	---------	------	------	--------------------------	------------

PHYSICS - cont.

Courses open only to Upper Division and Graduate Students

131	Exp. Phys.: Elect. & Mag.	2	MTThF	7,8	Pence 2	
135	Exp. Phys.: Atomics & Nucleonics	2	MTThF	7,8	Pence 2	
155a	Fund. Atomic & Nuclear Phys.	3	M-S	5	Pence 208	

Courses open only to Graduate Students:

C217a	Theoretical Phys.	3 ^a	M-S	2	Pence 103	
250	Cosmic Rays & Relativistic Phenomena	3	M-S	4	Pence 103	

Other Advanced or Graduate Courses will be offered if demand for them arises.

POLITICAL SCIENCE

Amry Vandenbosch, Head of Department, Social Sciences, 105

UPPER DIVISION REQUIREMENTS - Junior and Senior Years

Requirements in the Field of Concentration: Forty credits of advanced work in the field of Social Studies, during the Junior and Senior years, including the Major work.

Requirements for a Major. Prerequisites: Political Science 51a & b or Economics 1. Required: At least one course in each of four fields of Political Science, including one course in Constitutional Development and one in Political Theory; Political Science 190; minimum of 15 credits of advanced work in Political Science; and a comprehensive examination in the senior year.

LOWER DIVISION REQUIREMENTS - See Page 20

Note: Six credits from the following courses will satisfy the lower division requirements in the social studies: History 4a, b, 5a,b, Political Science 51a, b, Geography or Anthropology 3a and Sociology or Geography 3b.

*51a-1	Am. Govt.	3	M-S	1	SS 129	Drennon
*51a-2	Am. Govt.	3	M-S	2	SS 129	Trimble
*51b	Am. Govt.	3	M-S	5	SS 129	Kammerer

Courses not open to Freshmen:

80	State Govt.	3	M-S	2	SS 118	Reeves
----	-------------	---	-----	---	--------	--------

Courses open only to Upper Division and Graduate Students:

140	Rur. Local Govt.	3	M-S	2	SS 132	Vanlandingham
155b	Compara. Govt.-Contemp. Dictatorship	3	M-S	2	SS 117	Drennon
159a	Am. Constitutional Develop.	3	M-S	4	SS 132	Trimble
166	The United Nations	3	M-S	3	SS 117	Vandenbosch
172	Ky. Govt. & Constitution	3	M-S	4	SS 118	Reeves
173	Pub. Opinion	3	M-S	3	SS 129	Shannon
177b	Pub. Personnel Adm.	3	M-S	3	SS 118	Kammerer

Courses open only to Graduate Students:

204	International Relations & Org.	3	M-S	4	SS 117	Vandenbosch
271	Seminar in Contemp. Political Theory	3	M-S	5	SS 132	Shannon

PSYCHOLOGY

James S. Calvin, Head of Department, Neville Hall, 106

UPPER DIVISION REQUIREMENTS - Junior and Senior Years

* Open to Freshmen

COLLEGE OF ARTS AND SCIENCES — Continued

Course Number	Subject	Credits	Days	Hour	Building and Room Number	Instructor
---------------	---------	---------	------	------	--------------------------	------------

PSYCHOLOGY - cont.

Requirements in the Field of Concentration: The student may choose as his field of concentration either the Biological Sciences or the Social Studies. In either case, forty credits of advanced work, including the Major work, must be completed during the junior and senior years.

Requirements for a Major. Prerequisites: Psychology 1a and 1b.

Required: A minimum of 15 credits of advanced work in psychology, and a comprehensive examination in the senior year.

LOWER DIVISION REQUIREMENTS - See Page 20

The Biological Sciences. Students may satisfy the biological group requirements by completing a minimum of six semester credits from the following courses: Anatomy and Physiology 2, 10; Anthropology 1; Bacteriology, 2a b, 52; Botany 1, 2, 25; Psychology 1a, b; Zoology 1.

Note: Six credits of the courses that satisfy the biological and physical sciences requirements must be in courses that have laboratory.

Note: The student should enroll in one lecture-recitation section and one laboratory section for Psychology 1a.

*1a-1	Intro. to Psy., Lec.- Rec.	3	M-Th	3		Meyers
*1a-2	Intro. to Psy., Lab.		MW	4,5	NH 206	Meyers
*1a-3	Intro. to Psy., Lab.		MW	7,8	NH 206	Meyers
7	Psy. of the Child Prereq: Psy. 1a	3	M-S	3		Bills
8	Indiv. Differences Prereq: Psy. 1a, 1b, or equiv.	3	M-S	5	NH 112	Newbury

Courses open only to Upper Division & Graduate Students:

114	Abnormal Psy. Prereq: Psy. 1a, 1b	3	M-S	1	NH 112	Pattie
117	Biol. of Motivation Prereq: Psy. 1a, 1b	2	M-Th	3	NH 112	Newbury
120a, b, c, d	Indp. Work in Psy. Prereq: Major in Department with standing of 2 in Psy. courses.	2 ea	By Appt.		NH	Staff
124	Mental Hyg. Prereq: Psy. 1a, 1b	3	M-S	4	PA 208	Bills
127	Intro. to Ind. Psy. Prereq: Psy. 1a, 1b	3	M-S	2	NH 112	Mellenbruch
128	Psy. of Ind. Personnel Procedures Prereq: Psy. 1a, 1b	3	M-S	4	NH 112	Mellenbruch
130a	Speech Correction: A Surv. Prereq: 9 semester credits in Psy.	3	M-S	3	PA 205	Diehl
130b	Speech Correction: An Intro. to Therapy (May be taken concomitantly with Psy. 130a)	3	By Appt.		PA 203	Diehl
150	Psychological Testing Prereq: Psy. 1a, 1b and 8	3	M-S	2	NH 205	Webster

Courses open only to Graduate Students:

203a-h	Prob. in Psy.	2 ea	By Appt.		NH	Staff
210a-h	Res. in Psy.	3 ea	By Appt.		NH	Staff
219	Clinical Psy.	4	M-Th	7, 8	NH 117	Webster
222	Systems of Psy. & Their Hist.	3	M-S	3	NH 201	Pattie
238	The Rorschach Test	4	M-Th	1,2	NH 202	Dimmick
311a, b, c, d	Practicum in Stud. Personnel	3 ea	By Appt.		A	Croft, North
431a-p	Special Field Practicum	1 ea	By Appt.		VA Hospital	Dimmick

* Open to Freshmen

Course Number	Subject	Credits	Days	Hour	Building and Room Number	Instructor
---------------	---------	---------	------	------	--------------------------	------------

PSYCHOLOGY - cont.

Open only to VA trainees in clinical psy.

500-1	Thesis	0	By Appt.		NH	Staff
500-2	Thesis	0	By Appt.		NH	Staff
500-3	Thesis	0	By Appt.		NH	Staff

RADIO ARTS

Elmer G. Sulzer, Head of Department, McVey, Radio Studios

UPPER DIVISION REQUIREMENTS - Junior and Senior Years

Requirements in Field of Concentration: Forty credits in courses not open to Freshmen, including the major work, in the field of Literature, Philosophy and the Arts, during the Junior and Senior Years.

Requirements for the Major. Prerequisites: Radio Arts 1a,b.

Required: Radio Arts 2a, 101, 102, 103, 105, 106a, 106b, and 110: Comprehensive examination.

LOWER DIVISION REQUIREMENTS - See Page 20

*1a	Radio Today	3	M-S	4	McVH Rad	Sulzer
2a	Radio Announcing	2	MW	5	McVH Rad	Henderson
				(4 hr. Lab. by Appt.)		

Courses open only to Upper Division and Graduate Students:

105a	Radio Script Writing	2	TTh	5	McVH Rad	Henderson
				(4 hr. Lab. by Appt.)		
106a	Radio Production	2	MW	7	McVH Rad	Sulzer
				(4 hrs. Lab. by Appt.)		

ROMANCE LANGUAGES

Hobart Ryland, Head of Department, Miller, 301

UPPER DIVISION REQUIREMENTS - Junior and Senior Years

Requirements in the Field of Concentration: Forty credits of advanced work in the field of Literature, Philosophy, and the Arts, during the Junior and Senior years, including the Major works.

Requirements for a Major. Prerequisites: Junior standing: 12 hours of English: in French; RL 1a-b, 2a-b, 4a-b, or 5a-b, 3a-b, or 8a-b; In Spanish: RL 1a-b, or 4a-b, 5a-b, 7a-b, 10a-b. Required: A minimum of 17 credits of advanced work in Romance Languages: R. L. 80a,b. Comprehensive examination in senior year.

LOWER DIVISION REQUIREMENTS - See Page 20

Note: No credit for first semester of a beginning language until second semester is completed. The student who presents one unit of high school foreign language will be permitted to enroll in first year work for full credit. The student who presents two units of high school foreign language will be permitted to enroll in first year work, but will receive credit only if he makes at least a B standing in both semesters of this course.

See Page— for Basic Achievement Examination.

C1a	Elem. French (For Reading Knowledge)	0	M-F	4	MH 307	Ryland
*1a	Elem. French	3	M-S	4	MH 307	Ryland
*1b	Elem. French	3	M-S	5	MH 307	Walker
*5a	Elem. Spanish	3	M-S	3	MH 307	Server
*5b	Elem. Spanish	3	M-S	2	MH 307	Schick
8a	French Phonetics	3	M-S	3	MH 306b	Schick

* Open to Freshmen

COLLEGE OF ARTS AND SCIENCES — Continued

Course Number	Subject	Credits	Days	Hour	Building and Room Number	Instructor
---------------	---------	---------	------	------	--------------------------	------------

ROMANCE LANGUAGES - cont.Courses open only to Upper Division and Graduate Students:

103a	Adv. Phonetics	3	M-S	3	MH 306b	Schick
106a	Spanish Lit. of the XX Cent.	3	M-S	2	MH 306b	Server
109a	French Lit. of the XIX Cent.	3	M-S	4	MH 306b	Walker
113a	Adv. French Grammar	3	M-S	5	MH 306b	Ryland
114a-h	Indp. Work in RL	3 ea	By Appt.			Staff

SOCIAL WORK

H. E. Wetzel, Head of Department, McVey, 314

UPPER DIVISION REQUIREMENTS - Junior and Senior Years

Requirements in the Field of Concentration: Forty Semester hours of advanced work in the field of social studies during the junior and senior years, including the Major work in the department.

Requirements for a Major. Prerequisite: Social Work 24. A basic minimum of twenty hours in social work including 100, 113, 116, 122, 130a, and 140a plus additional courses depending on the student's area of specialization, including specific courses in Sociology, Psychology, Hygiene and Economics. Tutorial and comprehensive examination in the senior year.

LOWER DIVISION REQUIREMENTS - See Page 20Courses open only to Upper Division and Graduate Students:

105	Child Welfare Services	3	M-S	3	McVH 329	Wetzel
122	Field of Social Work	3	M-S	4	McVH 329	
130b	Community Org. for Social Welfare	3	M-S	5	McVH 329	

Courses for Senior Majors Only:

111a	Indp. Work	1	By Appt.		McVH 329	Staff
C127a	Tutorial Work in Social Work	2	By Appt.		McVH 329	Wetzel

SOCIOLOGY

Howard W. Beers, Head of Department, Social Sciences, 206

UPPER DIVISION REQUIREMENTS - Junior and Senior Years

Requirements in the Field of Concentration: Forty credits of advanced work in the field of Social Studies during the Junior and Senior years, including the Major work.

Requirements for a Major. Prerequisites: Sociology 3a and 3b, or equivalent.

Required: Minimum of 18 credits of advanced work in Sociology, including at least 3 credits in Theory and Methodology, 6 credits in one of the other subdivisions below, and Sociology 191a and b and 192a and b. Comprehensive examination in senior year.

LOWER DIVISION REQUIREMENTS - See Page 20

Note: Six credits from the following courses will satisfy the lower division requirements in the social studies: Sociology, Geography, or Anthropology 3a; Sociology or Geography 3b; History 4a, b; 5a, b; Pol. Sci. 51a, b.

*3b	Societies Around the World	3	M-S	4	SS 203	
-----	----------------------------	---	-----	---	--------	--

Courses open only to Upper Division and Graduate Students

106	Prin. of Soc.	3	M-S	4	SS 202	Anderson
109a	The Family	3	M-S	2	SS 212	Gladden
109b	The Family	3	M-S	2:10-4:20	SS 212	Gladden
127	Social Classes	3	M-S	5	SS 212	Anderson

* Open to Freshmen

Course Number	Subject	Credits	Days	Hour	Building and Room Number	Instructor
---------------	---------	---------	------	------	--------------------------	------------

SOCIOLOGY - cont.

114a-c	Independent Work (Seminar in Inter-group Relations. June 30-Aug. 9) (Same as Ed. 175c)	1	M-S			Lovejoy and Staff
--------	--	---	-----	--	--	-------------------

TOPICAL MAJORS

John Kuiper, Chairman of Committee on Topical Majors, Frazer, 103.

The student may elect for his concentration field some topic and choose for the field courses which contribute to these central interests. To pursue a topical major the student must have earned a minimum academic standing of 1.5 during the freshman and sophomore years, and must have the approval of the Committee on Topical Majors which will require as a rule completion of the lower division requirements as prerequisites.

ZOOLOGY

J. M. Edney, Acting Head of Department, Funkhouser Biological Sciences, 14

UPPER DIVISION REQUIREMENTS - Junior and Senior Years

Requirements in the Field of Concentration: Forty credits of advanced work in field of Biological Sciences, during the Junior and Senior years, including the Major.

Requirements for a Major. Prerequisites: Junior standing; Zoology 6 credits.
Required: Zoology 7a or 157a; 7b or 157b or 21; Zoology 106, 108a, 108b, 114a, b; a minimum of 15 credits of advanced work passing a comprehensive examination before graduation.

Courses Recommended for Special Curricula: Medical Sciences, 1, 7b, 101a, b, 105, 106, 108b, 117, 119, 123. Teacher Training: 1, 7a, b, 11, 21, 102, 103a, b, 108a, b, 109. Preconservation Training: 1, 7a, 21, 102, 103a, b, 105, 109, 112, 117, 119, 123, 130, 141.

LOWER DIVISION REQUIREMENTS - See Page 20

The Biological Sciences. Students may satisfy the biological group requirements by completing a minimum of six semester credits from the following courses: Anatomy and Physiology 2, 10; Anthropology 1; Bacteriology 2a, b, 52; Botany 1, 2, 25; Psychology 1a, b; Zoology 1.

Note: Six credits of the courses that satisfy the biological and physical sciences requirements must be in courses that have laboratory.

*1-1	Prin. of An. Biol., Lec.	4	MTWTh	2	FBS B-3	Barbour
*1-2	Prin. of An. Biol., Lab.		MTWTh	3-4	FBS 12	Barbour

Courses open only to Upper Division and Graduate Students:

106-1	Embryology, Lec.	4	TTh	2-3	FBS 125	Brauer
106-2	Embryology, Lab.		MWFS	2-3	FBS 126	Brauer
108a	Prin. of Zoology (Evolution)	2	Daily	5	FBS B-8	Allen
110a-f	Indp. Work	3 ea	By Appt.			Staff
123-1	Medical Ent., Lec.	4	MTWTh	2	FBS B-8	Edney
123-2	Medical Ent., Lab.		MTWTh	3-4	FBS B-9	Edney

Courses open only to Graduate Students:

205a, b, c, d	Prob. in Parasitology	3 ea	By Appt.			Edney
206a, b, c, d	Prob. in Embryology & Histology	3 ea	By Appt.			Brauer
212a, b, c, d	Prob. in Ichthyology	3 ea	By Appt.			Allen
221a, b, c, d	Prob. in Herpetology and Mammalogy	3 ea	By Appt.			Barbour

* Open to Freshmen

COLLEGE OF ARTS AND SCIENCES — Continued

Course Number	Subject	Credits	Days	Hour	Building and Room Number	Instructor
---------------	---------	---------	------	------	--------------------------	------------

ZOOLOGY - cont.

500-1-3 Thesis 0 By Appt. Staff

SCHOOL OF JOURNALISM

Niel Plummer, Director, Enoch Grehan Journalism, 116.

UPPER DIVISION REQUIREMENTS - Junior and Senior Years

Requirements in the Field of Concentration: Forty semester hours in courses not open to Freshmen, including the major work, in either the field of Social Studies or that of Literature, Philosophy, and the Arts, during the Junior and Senior years.

Requirements for a Major. Prerequisite: Journalism, six to eight hours. Required: Journalism 100a, b, 101, 105, 106, 107, 108, 109, 114, 123, and 127. The Degree of A.B. in Journalism. Four sequences leading to the degree of A.B. in Journalism are outlined in the general catalog. Comprehensive Examinations. Majors and candidates for the degree in Journalism are required to pass a final comprehensive examination at the end of the Senior year.

LOWER DIVISION REQUIREMENTS - See Page 20

10 Surv. of Jour. 3 M-S 3 EGJ 211 McLaughlin

Courses open only to Upper Division and Graduate Students:

100a-1	News Reporting (Lec.)	3	MF	8,9	EGJ 112	McCauley
100a-2	News Reporting (Lab.)		TW	8,9	EGJ 112	McCauley
110	Supervision of High Sch. Publications	3	MWF	7,8	EGJ 207	Portmann
112	Critical Writing for the Press	3	M-S	4	EGJ 211	McLaughlin
114	Newspaper Adv. and Promotion	3	M-S	5	EGJ 206	Portmann
118	Pub. Relations	3	M-S	3	EGJ 112	McCauley
125	Magazine Article Writing	3	MWF	7,8	EGJ 211	Moore
130	Intro. to Press Photography	3	MWF	1,2	EGJ 219	Moore

Course Number	Subject	Credits	Days	Hour	Building and Room Number	Instructor
---------------	---------	---------	------	------	--------------------------	------------

AGRICULTURAL ENTOMOLOGY

Courses open only to Upper Division and Graduate Students:

103	Econ. Ent: Fruit & Garden Insects	3	M-F	5	Agr 1	Townsend
				1 hour	By Appt.	
104	Econ. Ent: Fm. Crop Insects & Animal Parasites	3	M-S	3	Agr 1	Townsend

AGRONOMY

Courses open only to Upper Division and Graduate Students:

102	Field Crop Ecology Prereq: Agron. 1, Bot. 1	3	M-S	1	Agr 205	Sigafus
103	Weeds Prereq: Bot. 1	2	M-Th	5	Agr 205	Sigafus
109a-c	Special Prob. in Crops Prereq: Agron. 1	3 ea	By Appt.			Sigafus
111	Soil Conservation Prereq: Agron. 10 (July 7 to 23)	3	M-S	2,3,4,5	Agr 301	Survant
112a-c	Special Problems in Soils Prereq: Agron. 10	3 ea	By Appt.			Survant
114	Fertilizers & Soil Mgt. Prereq: Agron. 10 (June 17-July 3)	3	M-S	2,3,4	Agr 301	Karraker

Courses open only to Graduate Students:

212a-d	Res in Soils	3	By Appt.			Weeks, Karraker
--------	--------------	---	----------	--	--	--------------------

ANIMAL INDUSTRY

Inter-Session Course in Animal Industry

*46,
146 Survey of the Poultry Industry, 3 credits, is a travel course to be given June 1-16. Each student is responsible for his own expenses; transportation to be prorated. Special registration is required.

Summer Session Courses

*1	Fm. Livestock Prod.	3	M-Th	4,5	SP 101	Barnhart
61	Genetics	3	M-S	2	D 109	Steele
62	Genetics Lab.	1	MW	8,9	D 225	Steele
81	Prin. of Animal Nutrition Prereq: Chem. 4a	3	M-F	7	SP 101	Good

Courses open only to Upper Division and Graduate Students:

109a-c	Special Prob. in Animal Husbandry	3 ea	By Appt.			Staff
129a-f	Special Prob. in Dairying	3 ea	By Appt.			Staff
149a-c	Special Prob. in Poultry	3 ea	By Appt.			Staff
161	Genetics	3	M-S	2	D 109	Steele
162	Genetics Lab.	1	MW	8,9	D 225	Steele
169a-c	Special Prob. in Genetics	3 ea	By Appt.			Steele

Courses open only to Graduate Students:

221a-c	Res. in Dairying	3 ea	By Appt.			Seath Morrison Freeman
289a-c	Special Prob. in Animal Nutrition	3 ea	By Appt.			Thomas

*Open to Freshmen

Course Number	Subject	Credits	Days	Hour	Building and Room Number	Instructor
<u>ANIMAL PATHOLOGY</u>						
<u>Course open only to Upper Division and Graduate Students:</u>						
102	Infect. Diseases of Domestic Animals (June 17 to July 3)	3	M-S	2,3,4	AP 207	Hull, Brown
<u>FARM ECONOMICS</u>						
<u>Courses open only to Upper Division and Graduate Students:</u>						
112a-c	Special Prob. in Farm Econ. Prereq: F E 110	3 ea	By Appt.			Staff
124	Cur. Farm Mgt. Prob. Prereq: F E 110 (July 7 to July 23)	3	M-S	2,3,4	AP 106	Bradford
<u>Courses open only to Graduate Students:</u>						
201a-c	Res in Farm Econ.	3 ea	By Appt.			Staff
C202b	Econ. of Prod. as Appl. to Agr.	2	By Appt.			Johnson
203	Cost, Price & Prod. Relationships in Agr. (July 24-August 9)	3	M-S	2,3,4	AP 106	Johnson
<u>FARM ENGINEERING</u>						
*3	Farm Struct Engr	3	M-F	8,9	AE 201	Brooks
*4-1	Farm Shop	3	M-F	6,7	AE 106	Young
*4-2	Farm Shop (July 24 to August 9)	3	M-S	2,3,4,5	AE 106	Young
<u>Courses open only to Upper Division and Graduate Students:</u>						
105	Engr. Practices in Water Mgt. (July 7 to July 23) F.E. 105-registration limited to 16. Reservations should be requested prior to June 17.	3	M-S	2,3,4,5	AE 201	Brooks
<u>FORESTRY</u>						
<u>Courses open only to Upper Division and Graduate Students:</u>						
110-1	Wood Identification & Tech. Lec	3	M-Th	4	Agr 1	Davenport
110-2	Wood Identification & Tech. Lab		MW	6,7	Agr 205	Davenport
115	Wood Conditioning	3	M-S	2	Agr 1	Davenport
<u>HORTICULTURE</u>						
<u>Course open only to Upper Division and Graduate Students:</u>						
105	Pomology: Small Fruits (July 7 to 23)	2	M-F	2,3,4	Agr 205	Waltman
<u>MARKETS & RURAL FINANCE</u>						
<u>Courses open only to Upper Division and Graduate Students:</u>						
100	Agr. Mktg. (Prereq: Econ 51)	3	M-S	3	Agr 4	Binkley
C103	Mktg. Livestock & Livestock Prod. (Prereq: M & R F 100)	3	M-S	1	Agr 4	Binkley
C120	Agr. Finance (Prereq: Fm Ec 1) (June 17 to July 3)	3	M-S	2,3,4	Agr 205	Clark and Bradford
<u>Courses open only to Graduate Students:</u>						
202a-c	Spec. Prob. in Mktg. & Rur. Fin	3 ea	By Appt.			Brown and Staff
204	Res. in Mktg.	3	By Appt.			Price

* Open to Freshmen

Course Number	Subject	Credits	Days	Hour	Building and Room Number	Instructor
---------------	---------	---------	------	------	--------------------------	------------

RURAL SOCIOLOGY
Courses open only to Upper Division and Graduate Students:

115	Org. of Rur. Groups	3	M-S	1	Agr 1	Bauder
160	Rur. Community Anal. (July 24 to August 9)	3	M-S	2,3,4	Agr 205	Ramsey
190a-c	Spec. Prob. in Rur. Life	2 ea.	By Appt.			Staff

Course open only to Graduate Students:

200a-c	Res. in Rur. Soc.	2 ea.	By Appt.			Staff
--------	-------------------	-------	----------	--	--	-------

HOME ECONOMICS

3-1	Dietetics for Nurses	4	M-Th	3,4,5	HE 205	Taylor
3-2	Dietetics for Nurses	4	M-Th	3,4,5	HE 200	Warren
*52-1	Intro. to Child Develop., Lec.	4	M-F	7	HE 1	Bentley
52-2	Intro. to Child Develop., Lab.		M	2,3	NS	Bentley
			W	4,5		
52-3	Intro. to Child Develop., Lab.		T	2,3	NS	Bentley
			Th	4,5		
52-4	Intro. to Child Develop., Lab.		M	4,5	NS	Bentley
			W	2,3		
52-5	Intro. to Child Develop., Lab.		T	4,5	NS	Bentley
			Th	2,3		
52-6	Intro. to Child Develop., Lab.		F	2,3,4,5	NS	Bentley

Courses open only to Upper Division and Graduate Students:

101	Prin. of Nutrition	3	M-F	11:00a.m	HE 1	Clemmons
				12:00 N	*	
102	Dietetics	3	M-Th	3,4	HE 201	Clemmons
	Prereq: H E 6,11					
114	Food Preservation	3	M-Th	2,3,4	HE 204	Helton
	Prereq: Bact 52					
C115	Food for Spec. Occasions	3	M-Th	5,6,7	HE 201	Barkley
119a	Spec. Prob. in Foods & Nutrition	2	By Appt.			Clemmons
125	Adv. Textiles	2	M-Th	2	HE 302	Guenther
	Prereq: H E 25, 161					
126	Costume design	3	M-F	6,7	HE 300	Crumrine
	Prereq: H E 27, Art 30					
127	Adv. Clothing	3	MW	6,7,8	HE 307	Guenther
	Prereq: H E 27		TTh	6,7		
135	Decorative Textiles	2	By Appt.		HE 302	Guenther
	Prereq: H E 25, Art 30					
139	Adv. Interior Decoration	2	By Appt.			Crumrine
	Prereq: H E 129					
140	The Sch. Lunch	3	M-Th	5,6	HE 203	Helton
	Prereq: H E 5, Econ. 51					
159a-c	Spec. Prob. in Child Develop. & Family Living	2 ea.	By Appt.			Bentley
161	Consumer Prob.	3	M-F	5	HE 105	Wilmore
	Prereq: H E 61, Econ. 51					
162b	Home Mgt. & Family Relationships	3	By Appt.			Wilmore
	Prereq: H E 162a					Warren
169a-c	Sp. Prob. in Home Mgt.	2 ea.	By Appt.			Wilmore

*Open to Freshmen

COLLEGE OF ENGINEERING

Course Number	Subject	Credits	Days	Hour	Building and Room Number	Instructor
<u>ARCHITECTURAL ENGINEERING</u>						
1	Arch. Rendering	2		12 hrs. By Appt.	AH 216	Gray
4a	Arch. Design	3		18 hrs. By Appt.	AH 216	Gray
4b	Arch. Design	3		18 hrs. By Appt.	AH 216	Gray
<u>CIVIL ENGINEERING</u>						
15	Gen. Surv.	3		(Summer Surveying Camp		(Shaver
16b	Route Surv.	3		(Camp Robinson		(Blythe &
17	Hydrographic Surv.	1		(Noble, Kentucky		(Others
18	Map. & Topographic Draw.	2	M-F	1-2:50	Engr. Annex 200	Hoffmann
81	Testing Mat.	1	TTh	1, 2	AH 108	Chambers
107-1	Soil Mechanics	3	M-Th	1	AH 214	Pendley
107-11	Soil Mechanics, Lab.		TTh	1-4:00	Highway Lab.	
120	Hydraulics	2	T-F	5	AH 210	Cheek
123	Hydraulics Lab.	1	TTh	1-3:50	AH 108	Cheek
171a	Theory of Structures	3	M-S	4	AH 214	Leggett
171b	Theory of Structures	3	M-S	2	AH 214	Mory
173a	Steel Structures	3	M-S	4, 5	AH 212	Mory
173b	Steel Structures	2		12 hrs. By Appt.	AH 216	Leggett
<u>ELECTRICAL ENGINEERING</u>						
11	Elec. Lab.	1	W	1-4:50	Engr. Annex Lab.	Adams
21	Prin. Of Elec. Engr. Rec. & Lab.	4	M-F	7	AH 201	Boggess
			W-F	8, 9	AH 130	
105b	Elec. Engr. Circ. & Mach., Rec. & Lab.	4	M-F	6	AH 232	Boggess
			TTh	8-10	AH 130	
107-1	Elec. Controls, Rec.	3	M-F	4	AH 210	Boggess
107-11	Elec. Controls, Lab.		TTh	6, 7	AH 130	
107-12	Elec. Controls, Lab.		MF	6, 7	AH 130	
†108-1	Ind. Electronics	3	M-F	2	AH 201	Romanowitz
108-11	Ind. Electronics, Lab.		MF	6, 7	AH 244	
108-12	Ind. Electronics, Lab.		TTh	6, 7	AH 244	
108-13	Ind. Electronics, Lab.		MF	7, 8	AH 244	
110	Elec. Lab., Lec. Lab.	2	MF	5	AH 210	Bureau
				6 hrs. By Appt.		
114	Alt. Cur. Circ., Rec. Lab.	4	M-F	4	AH 232	Barnett
			MW	8-10	AH 130	
115	Dir. Cur. Mach., Rec. Dir. Cur. Mach., Lab.	3	MWF	3	AH 201	Barnett
			TTh	7-9	AH 130	
116	Alt. Cur. Mach., Rec. & Lab.	4	M-F	2	AH 232	Barnett
			MF	7-9	AH 130	
120	Elec. Circ. Anal.	3	M-F	3	AH 232	Smith
			W	1-3:50	AH 232	
123	Elec. Equip. Prob.	2	TTh	7	AH 205	Boggess
				10 hrs. By Appt.		
124	Elec. Design	2	TTh	6	AH 201	Barnett
				10 hrs. By Appt.		
137	Elec. Power Trans. & Distribution	3	M-S	3	AH 232	Bureau
†151a, b	Seminar	1 ea.	W	7-9	AH 202	Romanowitz
161	Electronics, Rec. Electronics, Lab.	4	M-F	4	AH 201	Graham
			TTh	7-9	Engr. Annex Lab.	
†164	Radio Engr. II, Rec. Radio Engr. II, Lab.	4	M-F	4	AH 210	Allison
			MF	7-9	AH 244	
†165	Radio Engr. - Fund. of Elec. Waves	2	MTThF	3	AH 210	Romanowitz
<u>ENGINEERING - GENERAL</u>						
<u>Applied Mechanics</u>						
2	Mechanisms (Mech.)	3	MTThF	4	AH 204	Staff
			TTh	1-3:50	AH 216	

† August Graduates, Only

COLLEGE OF ENGINEERING — Continued

63

Course Number	Subject	Credits	Days	Hour	Building and Room Number	Instructor
---------------	---------	---------	------	------	--------------------------	------------

ENGINEERING - GENERAL - cont.

3	Statics	3	M-S	4	AH 202	Staff
4	Dynamics (Civil & Elec.)	2	MWFS	3	AH 204	Staff
6	Mechanisms (Elec.)	2	MTThF	6	AH 204	Staff
7	Dynamics (Mech.)	3	M-S	2	AH 202	Staff
100	Strength of Mat.	4	TTh	3	AH 202	Staff
			M-S	5		

Engineering Drawing

1a-1	Elem. Engr. Draw.	2	M-S	2, 3	Engr. Annex 200	Nollau,
1a-2	Elem. Engr. Draw.	2	M-S	4, 5	Engr. Annex 200	Hoffmann &
1b	Descript. Geom.	2	M-S	4, 5	Engr. Annex 200	Mock
2	Mech. Draw. (For students in Ind. Chem.)	1	MWF	2, 3	Engr. Annex 200	
18-1	Adv. Engr. Draw.	2	M-S	4, 5	Engr. Annex 200	
18-2	Adv. Engr. Draw.	2	M-F	1-2:50	Engr. Annex 200	
			ThF	3-3:50	Annex 200	

MECHANICAL ENGINEERING

†15a-1	Mfg. Proc., Lec.	2	MW	5	AH 232	Staff
15a-11	Mfg. Proc., Lab.		M	1-3:50	AH 110c	
15a-12	Mfg. Proc., Lab.		W	1-3:50	AH 110c	
15a-13	Mfg. Proc., Lab.		F	1-3:50	AH 110c	
15a-14	Mfg. Proc., Lab.		S	2-4	AH 110c	
†15b-1	Mfg. Proc., Lec.	2	TTh	5	AH 232	Staff
15b-11	Mfg. Proc., Lab.		T	1-3:50	AH 110c	
15b-12	Mfg. Proc., Lab.		Th	1-3:50	AH 110c	
100b	Mach. Design	3	MWF	1-4:50	AH 216	Staff
			TTh	1-3:50		
107	Fluid Mech.	3	M-S	3	AH 235	Staff
108	Int. Comb. Engines	3	M-S	2	AH 236	Staff
112-1	Mech. Lab., Lec.	2	MW	1-1:50	AH 235	Staff
112-11	Mech. Lab., Lab.		MW	2-4:50	AH 131a	
113a-1	Mech. Lab., Lec.	2	MW	1-1:50	AH 236	Staff
113a-11	Mech. Lab., Lab.		MW	2-4:50	AH 131a	
113b-1	Mech. Lab., Lec.	2	TTh	1-1:50	AH 235	Staff
113b-11	Mech. Lab., Lab.		TTh	2-4:50	AH 131a	
113b-2	Mech. Lab., Lec.	2	MW	1-1:50	AH 219	Staff
113b-21	Mech. Lab., Lab.		MW	2-4:50	AH 131a	
114b-1	Air Condit., Heat. & Ventila. Design, Lec.	3	MW	5	AH 236	Staff
114b-11	Air Condit., Heat. & Ventila. Design, Lab.		MWF	1-4:50	AH 216	
122a	Seminar	1	M-Th	4	AH 235	Staff
122b	Seminar	1	M-Th	4	AH 235	Staff
136	Int. Comb. Engine Lab.	1	MW	1-3:50	Aero. Lab.	Staff

METALLURGICAL ENGINEERING

C60	Met. Lab. & Shop Prac.	4	20 hrs. By Appt.			Staff
-----	------------------------	---	------------------	--	--	-------

MINING ENGINEERING

131	Mine Surv.	1	Summer Surveying Camp Camp Robinson Noble, Kentucky			Spokes
-----	------------	---	---	--	--	--------

† Student must sign for 1 lecture section and 2 shop sections

COLLEGE OF LAW

Course Number	Subject	Credits	Days	Hour	Building and Room Number	Instructor
123	Negotiable Instruments	3	M-W	3, 5	L 212	Ham
163	Wills and the Adm. of Estates	2	Th-S	4	L 212	Whiteside
164	Conflict of Laws	3	Th-S	3, 5	L 213	Moreland
166	Sales	3	M-W	3, 5	L 213	Gilliam
167	Administrative Law	3	M-W	2, 4	L 212	Oberst
C173	Federal Jurisdiction and Procedure	3	M-W	2, 4	L 213	McEwen
C190	Estate, Inheritance and Gift Taxation	1	ThF	2	L 213	Whiteside
194	Mortgages	2	ThF	2, 5	L 212	Matthews

COLLEGE OF EDUCATION

65

Course Number	Subject	Credits	Days	Hour	Building and Room Number	Instructor
---------------	---------	---------	------	------	--------------------------	------------

A standing of 1.0 is required for admission to any course in the College of Education.

DIVISION OF ADMINISTRATION

101	Sch. Org.	3	M-S	1	TEB 131	Davis
<u>Courses open only to Graduate Students:</u>						
202	Local Sch. Adm.	3	M-F	7	TEB 222	Meece
207	Sch. Bldgs. & Equip.	3	M-S	2	TEB 231	Hopper
221a	Seminar in Adm. (June 16- July 12)	3	By Appt.		Engr. Annex 101	Hopper
C221a	Seminar in Adm. (June 16 - June 28)	2	By Appt.		Engr. Annex 101	Hopper
229	The Elem. Prin.	3	M-S	3	TEB 231	Harris
231	Bus. Adm. & Fin. of Pub. Ed.	3	M-S	4	TEB 222	Meece
232	High Sch. Adm.	3	M-S	2	TEB 222	Davis
301a, b	Res. Prob. in Ed. Adm.	3 ea.	By Appt.		TEB 229	Hopper, Meece
321a, b	Res. Prob. in Higher Ed.	3 ea.	By Appt.		TEB 128	Dickey, Tuthill

DIVISION OF FOUNDATIONS OF EDUCATION

119	The Elem. Sch. Pupil	2	M-Th	4	TEB 131	
147	The Sec. Sch. Pupil	2	M-Th	2	TEB 131	
C147	The Sec. Sch. Pupil	3	M-S	3	TEB 131	Reed
148	Ed. Psy.	3	M-S	3	TEB 105	Sorenson

Courses open only to Graduate Students:

201	Foundations in Ed.	5	M-F	1-3:00	TEB Aud	Hartford & Others
222	Methodology of Ed. Res.	3	M-S	5	TEB 222	Sorenson
241b	Seminar in Foundations of Ed. (Moral & Spiritual Values in Ed.) (June 16-July 12)	3	By Appt.		Engr. Annex 101	Hartford & Others
255a	Guidance & Counseling in Today's Schs. (June 16-July 12)	3	M-F	1-3:00	TEB 231	Martin
255b	Guidance & Counseling in Today's Schs. (July 14-August 9)	3	M-F	1-3:00	TEB 231	Martin

DIVISION OF INSTRUCTION AND PLACEMENT

Business Education

158b	Tchg. Bookkeeping & Acctg.	3	M-S	5	TEB 231	Musselman
------	----------------------------	---	-----	---	---------	-----------

Courses open only to Graduate Students:

208a-d	Prob. in Bus. Ed. (Bookkeeping Workshop)	3 ea.	M-S	5	TEB 231	Musselman
C257a, b	Seminar in Bus. Ed. (Visual Aids Workshop) (July 7-18)	2 ea.	M-F	1-4:00	TEB 108	Thomas
271	Adm. & Supervision of Bus. Ed.	3	M-S	4	TEB Kdg A	Humphreys
273	Classification & Possible Use of Community Resources in Bus. Ed.	3	By Appt.		TEB 232	Musselman

Curriculum and Instruction

175a	Mod. Ed. Prob. (Classroom Teachers Workshop) (June 16-July 3)	3	By Appt.		Engr. Annex 101	Ginger, Stallings, & Others
C175b	Mod. Ed. Prob. (Atomic Energy)	2	Open only to students taking "Atomic Energy Courses." See page			
175c	Mod. Ed. Prob. (Intergroup Relations) (July 30-Aug. 9) (Same as Soc. 114a-c)	3	By Appt.			Lovejoy

COLLEGE OF EDUCATION — Continued

Course Number	Subject	Credits	Days	Hour	Building and Room Number	Instructor
---------------	---------	---------	------	------	--------------------------	------------

DIVISION OF INSTRUCTION AND PLACEMENT - Cont.

175g	Mod. Ed. Prob: Ed. of Handi- capped Children) (June 18-July 12)	3	By Appt.		TEB 207	Retherford
186	Visual Tchg.	3	M-S	1	TEB 222	Kelley

Courses open only to Graduate Students:

224	Org. & Supervision of Stud. Tchg. (July 27-August 9)	3	By Appt.		TEB Rec Rm	Ginger
225	Supervision of Instruct.	3	M-F	8	TEB 222	Adams
227	Prin. of Curriculum Construct.	3	M-S	3	TEB 222	Musselman
234	Prob. of Curriculum Making (Core Curriculum in Junior and Senior High School) (July 14-August 9)	3	By Appt.		TEB 207	Anderson Shipman

Elementary Education

20	Arts & Crafts in the Elem. Sch.	2	M-F	2, 3	TEB 170	Haines
42	Tchg. Arithmetic in the Elem. Sch.	3	M-S	1	TEB 231	Porter
C44	Child Develop. & the Curriculum	3	M-S	5	TEB 131	Harris
110	Adv. Arts & Crafts in the Elem. Sch.	2	M-F	7, 8	TEB 170	Haines
C133	Stud. Tchg. in the Elem. Sch.	8	By Appt.		TEB 126	Ginger & Staff
172	The Tchg. of Reading	3	M-S	2	TEB Kdg A	Hayes
173	Children's Lit.	3	M-S	3	TEB Kdg A	Duncan
196	Science in the Elem. Sch.	3	M-F	7	TEB 105	Kelley

Courses open only to Graduate Students:

212	The Elem. Sch.	3	M-S	5	TEB Kdg A	Duncan
215a, b	Indp. Work in Elem. Ed.	2 ea.	By Appt.		TEB 134	Duncan, Harris, Ginger

Secondary Education

105	Fund. of Sec. Ed.	3	M-F	8	TEB 131	Reed
111	Tchg. of Reading in the Junior and Senior High Schools	2	M-Th	7	TEB 131	Hart

Courses open only to Seniors and Graduate Students:

142	Stud. Tchg. in Art	8	By Appt.		TEB 170	Haines
153	Stud. Tchg. in Eng.	9	By Appt.		TEB 126	Ginger & Staff
154	Stud. Tchg. in Languages	9	By Appt.		TEB 126	Ginger & Staff
155	Stud. Tchg. in the Sciences	9	By Appt.		TEB 126	Ginger & Staff
156	Stud. Tchg. in Mathematics	9	By Appt.		TEB 126	Ginger & Staff
157	Stud. Tchg. in the Social Studies	9	By Appt.		TEB 126	Ginger & Staff
169a	Stud. Tchg. in Phy. Ed. (by special arrangement only)	4	By Appt.		TEB 126	Ginger & Staff
C169b	Stud. Tchg. in Phy. Ed. (by special arrangement only)	5	By Appt.		TEB 126	Ginger & Staff
177a, b	Stud. Tchg. in Music	4 ea.	By Appt.		TEB 126	Ginger & Staff
193	Stud. Tchg. in Bus. Ed.	9	By Appt.		TEB 126	Ginger & Staff

Courses open only to Graduate Students:

214	The Sec. Sch.	3	M-S	4	TEB 231	Adams
248a, b	Indp. Work in Sec. Ed.	3 ea.	By Appt.		TEB 126	Ginger, Adams

DIVISION OF VOCATIONAL EDUCATIONAgricultural Education

179	Determining Content in Voca- tional Agr. (June 16-July 5)	3	By Appt.		TEB 226	Hammonds
-----	--	---	----------	--	---------	----------

COLLEGE OF EDUCATION — Continued

67

Course Number	Subject	Credits	Days	Hour	Building and Room Number	Instructor
---------------	---------	---------	------	------	--------------------------	------------

DIVISION OF VOCATIONAL EDUCATION - Cont.

185a	Prob. in Agr. Ed. (June 16-July 5)	3	By Appt.		TEB Kdg B	Binkley
185b	Prob. in Agr. Ed. (July 7-23)	3	By Appt.		TEB Kdg B	Binkley

Courses open only to Graduate Students:

280	Meth. in Tchg. Vocational Agr. (July 7-23)	3	By Appt.		TEB 101	Hammonds
285a-d	Mod. Prob. in Agr. Ed. (July 24 - August 9)	3 ea.	By Appt.		TEB 226	Hammonds & Staff
287a	Adv. Prob. in Agr. Ed.	3	By Appt.		TEB 219	Hammonds,
287b	Selecting Tchg. Mat. (July 7-23)	3	By Appt.		TEB 226	Tabb, Wall
287c	Adult-Farmer Schs. (June 16-July 5)	3	By Appt.		TEB 201	Tabb
287e	Tchg. Farm Shop (July 7-23)	3	By Appt.		TEB 201	Tabb
287f	Young-Farmer Schs. (June 16-July 5)	3	By Appt.		TEB 101	Wall
289a, b	Res. in Agr. Ed.	3 ea.	By Appt.		TEB 219	Hammonds, Tabb

Home Economics Education

C165	Adult Ed. in Home Econ. (Workshop) (June 30-July 26)	4	By Appt.		TEB Cafe	Wood, Parker, Sneed
------	---	---	----------	--	----------	------------------------

Courses open only to Graduate Students:

C261	Home Econ. Supervision (July 14-August 9)	4	By Appt.		TEB 136	Sneed
C263	Current Prob. in Home Econ. Ed. (June 16-July 12)	4	By Appt.		TEB 136	Sneed
C264	Mod. Trends in Home Econ. Ed. (June 16-July 12)	4	By Appt.		TEB 107	Parker
C269	Evaluation in Home Econ. Ed. (July 14-August 9)	4	By Appt.		TEB 107	Parker

Industrial Education

C71	Trade Analysis (August 4-16)	3	By Appt.		TEB 201	Crumpton
C123	Vocational Guidance (August 18-30)	3	By Appt.		TEB 222	Youmans
C171a	Prin. & Phil. of Ind. Ed. (August 4-16)	3	By Appt.		TEB 101	Baker
C171b	Prin. & Phil. of Ind. Ed. (August 4-16)	3	By Appt.		TEB Kdg B	Youmans
C183b	Meth. In Ind. Ed. (August 18-30)	3	By Appt.		TEB 231	Crumpton

COLLEGE OF COMMERCE

Course Number	Subject	Credits	Days	Hour	Building and Room Number	Instructor
<u>ECONOMICS</u>						
*2	Econ. Hist. of Eur.	3	M-S	3	WH 102	Jennings
*3	Econ. Hist. of the U.S.	3	M-S	2	WH 103	Jennings
*7a	Prin. of Acctg., Rec.	4	MTThF	1	WH 306	Cojeen
	Prin. of Acctg., Lab.		M-Th	2,3	WH 306	Cojeen
*7b	Prin. of Acctg., Rec.	4	MTThF	4	WH 306	Tolman
	Prin. of Acctg., Lab.		M-Th	5,6	WH 306	Tolman
16	Tutorial Work in Econ.	1		By Appt.	WH 104	Carter
51	Prin. of Econ.	3	M-S	5	WH 102	Christian
52	Prin. of Econ.	3	M-S	4	WH 301	Massie
102	Labor Econ.	3	M-S	4	WH 102	Carter
	Prereq: Econ. 52					
104	Pub. Finance	3	M-S	2	SS 202	Hargreaves
	Prereq: Econ. 52					
105	Money and Banking	3	M-S	1	WH 102	Tolman
	Prereq: Econ. 52					
107	Statistical Method, Rec. & Lab.	3	M-Th	1,2	WH 401	Christian
112a-f	Indiv. Work in Econ.	1 ea		By Appt.		Staff
153	Econ. of Consumption	2	MTThF	2	WH	Sullivan
155	Ind. Relations	3	M-S	4	WH 401	Cojeen
200	Bus. Econ.	3	M-S	3	WH 103	Sullivan
202a-f	Seminar	1 ea		By Appt.		Carpenter
204	Surv. of Econ. Theory Since the Austrian School	3	M-S	4	SS 202	Hargreaves
218a	Econ. Theory	3	M-S	3	SS 202	Haynes
255	Adv. Personnel Mgt.	3	M-S	2	WH 102	Carter
<u>COMMERCE</u>						
*7a	Prin. of Acctg., Rec.	4	MTThF	1	WH 306	Cojeen
	Prin. of Acctg., Lab.		M-Th	2,3	WH 306	Cojeen
*7b	Prin. of Acctg., Rec.	4	MTThF	4	WH 306	Tolman
	Prin. of Acctg., Lab.		M-Th	5,6	WH 306	Tolman
†13a	Sect. Pract. Shorthand	3	M-S	3	EB 114	McMurtry
	Prereq: or concurrent: Eng. 1a					
13b	Sect. Pract. Shorthand	3	M-S	4	WH 303	Thomas
	Prereq: Com. 13a					
14a	Adv. Sect. Pract.	3		By Appt.	WH	Humphreys
	Prereq: Com. 13b and 17b					
14b	Adv. Sect. Pract.	3		By Appt.	WH	Humphreys
*17a	Sect. Pract., Type	2	MTThF	2	WH 303	McMurtry
	Prereq: or concurrent: Eng. 1a					
*C17a	Sect. Pract., Type.	3	M-S	2	WH 303	McMurtry
	Intensive course to attain vocational proficiency in one term.					
17b	Sect. Pract. Type.	2	MTThF	3	WH 303	Humphreys
60	Prin. of Mktg.	3	M-S	5	WH 103	Coolsen
96a	Intermed. Acctg.,	3	M-S	5	WH 207	Grady
96b	Intermed. Acctg.,	3	M-S	3	WH 301	Grady
109a	Bus. Law	3	M-S	3	WH 101	Lewis
109b	Bus. Law	3	M-S	5	WH 101	Lewis
117	Corp. Finance	3	M-S	2	WH 301	Pickett
118	Cost Acctg.,	3	M-S	3	WH 401	Beals
	Prereq: Com. 7b					
119	Retail Merchandising	3	M-S	4	WH 101	McIntyre
	Prereq: Com. 60					
129	Credit and Statement Anal.	2	MTThF	2	WH 207	Haun
131	Investments	3	M-S	4	WH 207	Pickett
133	Income Tax Procedure	3	M-S	4	WH 103	Haun
	Prereq: Com. 96b					
136	Sales Mgt.	3	M-S	2	WH 101	McIntyre
	Prereq: Com. 60					
137	Ind. Mgt.	3	M-S	1	WH 103	Massie
	Prereq: Com. 52					
138	Cases in Mgt.	3	M-S	5	SS 202	Haynes
145	Office Mgt.	3	M-S	5	WH 301	Thomas
146	Spec. Acctg., Prob.	3	M-S	5	WH 401	Beals

*Open to Freshmen

† No credit for 13a until 13b is complete

SHORT COURSES

69

Course Number	Subject	Credits	Days	Hour	Building and Room Number	Instructor
---------------	---------	---------	------	------	--------------------------	------------

COLLEGE OF ARTS AND SCIENCES

ANCIENT LANGUAGES

C150	The Tchg. of Latin (Demonstration class in Beginning High School Latin (June 18 - July 12).)	1	M-S	4	FH 106	
C150	The Tchg. of Latin (June 18 - July 12)	4	M-S	3-5	FH 106	

GEOGRAPHY

130	Regional Field Observation - "International Cooperative Summer School in Geography" Tour of Mexico - Six weeks, July 14 - Aug. 23. (Group will leave for Mexico July 10 and return Aug. 27.) All expense cost of the tour will be \$315.00. Twelve scholarships are available. A special folder will be sent upon request by writing to the Geography Department.	3				
-----	---	---	--	--	--	--

COLLEGE OF AGRICULTURE & HOME ECONOMICS

AGRONOMY

111	Soil Conservation Prereq: Agron. 10 (July 7 to 23)	3	M-S	2-5	Agr 301	Survant
114	Fertilizers & Soil Mgt. Prereq: Agron. 10 (June 17 - July 3)	3	M-S	2-4	Agr 301	Karraker

ANIMAL PATHOLOGY

102	Infect. Diseases of Domestic Animals (June 17 - July 3)	3	M-S	2-4	AP 207	Hull, Brown
-----	--	---	-----	-----	--------	----------------

FARM ECONOMICS

124	Cur. Farm Mgt. Prob. Prereq: F.E. 110 (July 7 - July 23)	3	M-S	2-4	AP 106	Bradford
203	Cost, Price & Prod. Relations in Agr. (July 24 - Aug. 9)	3	M-S	2-4	AP 106	Johnson

FARM ENGINEERING

*4-2	Farm Shop (July 24 - Aug. 9)	3	M-S	2-5	AE 106	Young
105	Engr. Practices in Water Mgt. (July 7 to 23) Registration limited to 16 - reservations should be requested prior to June 17.	3	M-S	2-5	AE 201	Brooks

HORTICULTURE

105	Pomology: Small Fruits (July 7 to 23)	2	M-F	2-4	Agr 205	Waltman
-----	--	---	-----	-----	---------	---------

MARKETS & RURAL FINANCE

C120	Agr. Finance Prereq: F.Ec. 1 (June 17 - July 3)	3	M-S	2-4	Agr 205	Clark, Bradford
------	--	---	-----	-----	---------	--------------------

RURAL SOCIOLOGY

160	Rur. Community Anal. (July 24 - Aug. 9)	3	M-S	2-4	Agr 205	Ramsey
-----	--	---	-----	-----	---------	--------

COLLEGE OF EDUCATION

DIVISION OF ADMINISTRATION

221a	Seminar in Adm. (June 16 - July 12)	2	By Appt.		Engr. Annex 101	Hopper
------	--	---	----------	--	--------------------	--------

* Open to Freshmen

SHORT COURSES — Continued

Course Number	Subject	Credits	Days	Hour	Building and Room Number	Instructor
<u>DIVISION OF ADMINISTRATION - Cont.</u>						
C221a	Seminar in Adm. (June 16 - June 28)	2	By Appt.		Engr. Annex 101	Hopper
<u>DIVISION OF FOUNDATIONS OF EDUCATION</u>						
241b	Seminar in Foundations of Ed. (Moral & Spiritual Values in Ed)	3	By Appt.	(June 16 - July 12)	Engr. Annex 101	Hartford & Others
255a	Guidance & Counseling in Today's Schs. (June 16 - July 12)	3	M-F	1-3:00	TEB 231	Martin
255b	Guidance & Counseling in Today's Schs. (July 14 - Aug. 9)	3	M-F	1-3:00	TEB 231	Martin
<u>DIVISION OF INSTRUCTION AND PLACEMENT</u>						
C257a,b	Seminar in Bus. Ed. (Visual Aids Workshop) (July 7 - 18)	2 ea.	M-F	1-4:00	TEB 108	Thomas
<u>Curriculum and Instruction</u>						
175a	Mod. Ed. Prob. (Classroom Teachers Workshop) (June 16 - July 3)	3	By Appt.		Engr. Annex 101	Ginger, Stallings & Others
175c	Mod. Ed. Prob. (Intergroup Relations) (July 30 - Aug. 9)	3	By Appt.	Same as Soc. 114a-c		Lovejoy
175g	Mod. Ed. Prob: Ed. of Handi- capped Children (June 18 - July 12)	3	By Appt.		TEB 207	Retherford
224	Org. & Supervision of Stud. Tchg. (July 27 - Aug. 9)	3	By Appt.		TEB Rec Rm	Ginger
234	Prob. of Curriculum Making (Core Curriculum in Junior and Senior High School) (July 14 - Aug. 9)	3	By Appt.		TEB 207	Anderson, Shipman
<u>DIVISION OF VOCATIONAL EDUCATION</u>						
<u>Agricultural Education</u>						
179	Determining Content in Voca- tional Agr. (June 16 - July 5)	3	By Appt.		TEB 226	Hammonds
185a	Prob. in Agr. Ed. (June 16 - July 5)	3	By Appt.		TEB Kdg B	Binkley
185b	Prob. in Agr. Ed. (July 7 - 23)	3	By Appt.		TEB Kdg B	Binkley
280	Meth. in Tchg. Vocational Agr. (July 7 - 23)	3	By Appt.		TEB 101	Hammonds
285a-d	Mod. Prob. in Agr. Ed. (July 24 - Aug. 9)	3 ea.	By Appt.		TEB 226	Hammonds & Staff
287b	Selecting Tchg. Mat. (July 7 - 23)	3	By Appt.		TEB 220	Tabb, Wall
287c	Adult-Farmer Schs. (June 16 - July 5)	3	By Appt.		TEB 201	Tabb
287e	Tchg. Farm Shop (July 7 - 23)	3	By Appt.		TEB 201	Tabb
287f	Young-Farmer Schs. (June 16 - July 5)	3	By Appt.		TEB 101	Wall
<u>Home Economics Education</u>						
C165	Adult Ed. in Home Econ. (Workshop) (June 30 - July 26)	4	By Appt.		TEB Cafe	Wood, Parker, Sneed
C261	Home Econ. Supervision (July 14 - Aug. 9)	4	By Appt.		TEB 136	Sneed
C263	Current Prob. in Home Econ. Ed. (June 16 - July 12)	4	By Appt.		TEB 136	Sneed
C264	Mod Trends in Home Econ. Ed. (June 16 - July 12)	4	By Appt.		TEB 107	Parker

SHORT COURSES — Continued

Course Number	Subject	Credits	Days	Hour	Building and Room Number	Instructor
---------------	---------	---------	------	------	--------------------------	------------

DIVISION OF VOCATIONAL EDUCATION - Cont.

Home Economics Education - Cont.

C269	Evaluation in Home Econ. Ed. (July 14 - Aug. 9)	4	By Appt.		TEB 107	Parker
------	--	---	----------	--	---------	--------

Industrial Education

C71	Trade Analysis (Aug. 4 - 16)	3	By Appt.		TEB 201	Crumpton
C171a	Prin. & Phil. of Ind. Ed. (Aug. 4 - 16)	3	By Appt.		TEB 101	Baker
C171b	Prin. & Phil. of Ind. Ed. (Aug. 4 - 16)	3	By Appt.		TEB Kdg B	Youmans

POST SUMMER SESSION COURSES

Industrial Education

C71	Trade Analysis (Aug. 4 - 16)	3	By Appt.		TEB 201	Crumpton
C171a	Prin. & Phil. of Ind. Ed. (Aug. 4 - 16)	3	By Appt.		TEB 101	Baker
C171b	Prin. & Phil. of Ind. Ed. (Aug. 4 - 16)	3	By Appt.		TEB Kdg B	Youmans
C123	Vocational Guidance (Aug. 18 - 30)	3	By Appt.		TEB 222	Youmans
C183b	Meth. in Ind. Ed. (Aug. 18 - 30)	3	By Appt.		TEB 231	Crumpton

