





Oct. 1903  
EMINENCE  
KY.

RAILROAD

RAILROAD

MAIN

ELM

FIRST

FREMO & CO  
CARRIAGE FAC.

M.E. CHURCH

CATHOLIC CHURCH

St. Anthony's Brown Under Ward

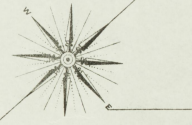
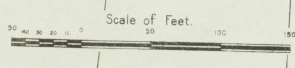
RAILROAD LIVERY

Moody Ho

3

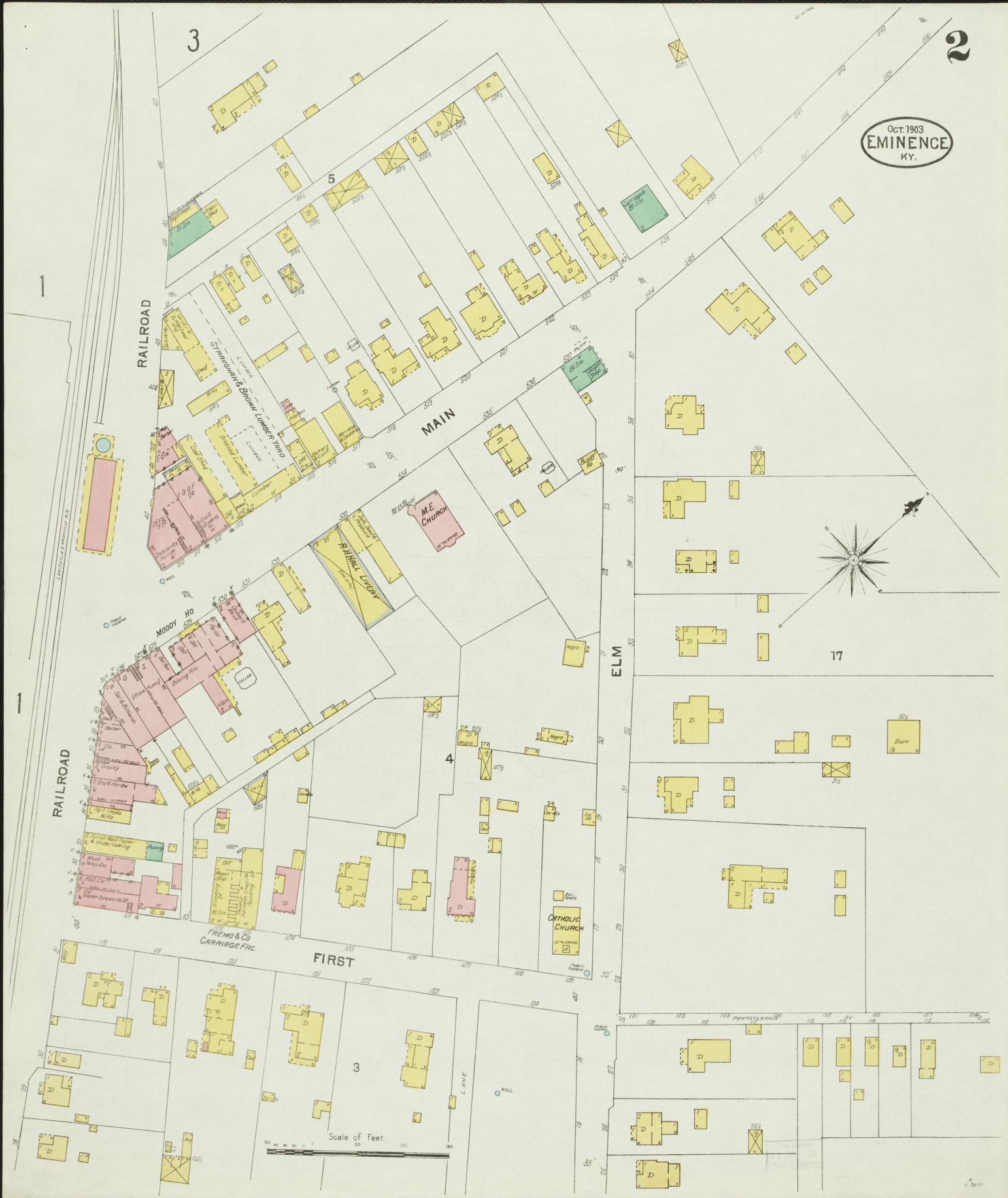
4

17



3

2

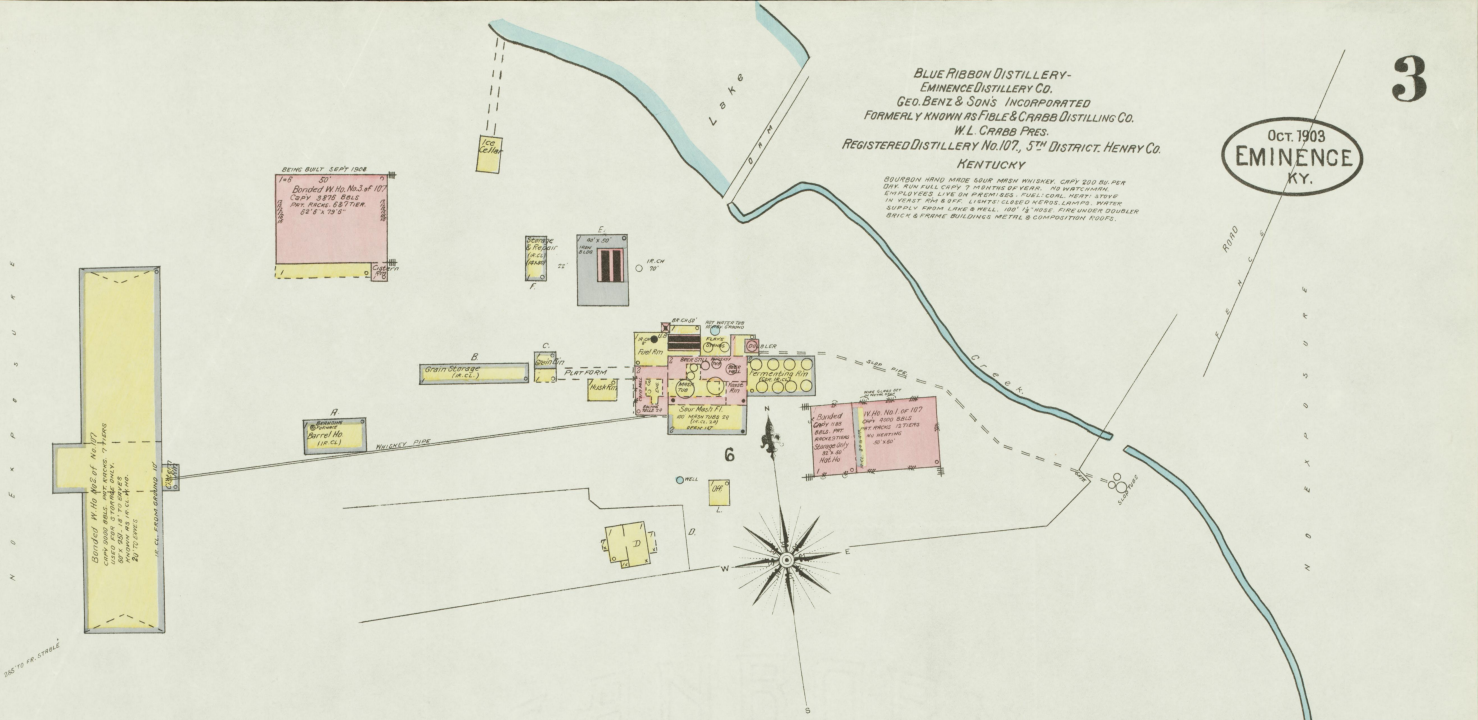




BLUE RIBBON DISTILLERY-  
EMINENCE DISTILLERY CO.  
GEO. BENZ & SONS INCORPORATED  
FORMERLY KNOWN AS FIBLE & CRABB DISTILLING CO.  
W. L. CRABB PRES.  
REGISTERED DISTILLERY No. 107, 5th DISTRICT, HENRY CO.  
KENTUCKY

OCT. 1903  
EMINENCE  
KY.

BOURBON WHISKY MADE FOUR MASH WHISKEY, CAPY 200 BU PER DAY, AND FILL CAPY 7 HOURS PER YEAR. 70 WATCHMEN EMPLOYED, LIVE ON PREMISES. FULL SOCIAL REST. STAY IN HOUSE. 200 & 200 L. HOTEL (SEEN) HOTEL, WATER SUPPLY FROM LAKE & WELL, 100' 1/2" HOSE FIRE UNDER DOUBLER BENCH & FRAME BUILDINGS METAL & COMPOSITION ROOF.



Scale of Feet.  
0 10 20 30 40 50 60 70 80 90 100 110 120 130 140 150

Map drawn  
by J. L. JUL 1905