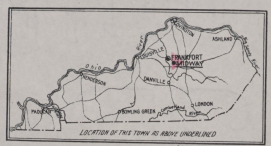
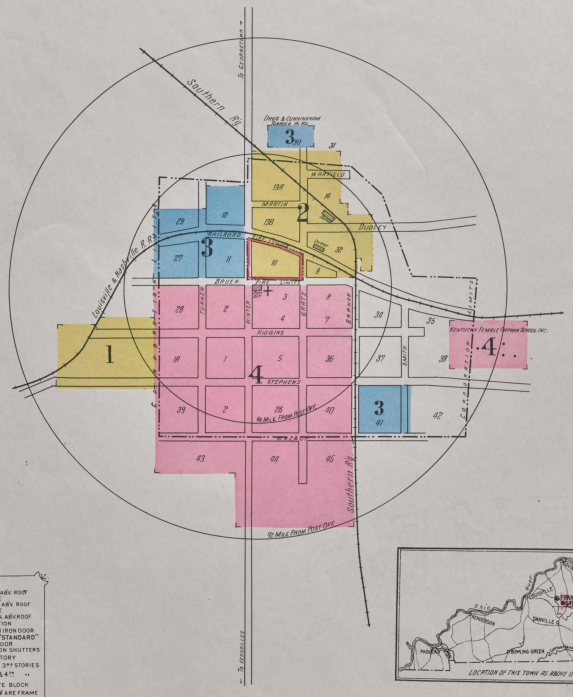




INDEX

SPECIALS	BOOKET
A. M. E. Church, A	4
Baptist Church, B	4
(Colored), B	4
Christian Church, C	4
(Colored), C	4
Cogar-Rumley Co., Coal, Feed, Hardware and Farm Equipment, D	2
Davis & Cunningham, Hoghead Tobacco Warehouse, F	3
Fire Department, F	4
Kentucky Female Orphan School, Inc., K	4
L. & N. R. R. Depot, L	2
Midway Graded and High School, M	4
Hotel, M	2
Ice and Coal Co., M	2
Old Kentucky Rockwood Ham Co., O	2
Post Office, P	4
Presbyterian Church, P	3
Public School (Colored), P	4
S. R. R. Depot, S	2

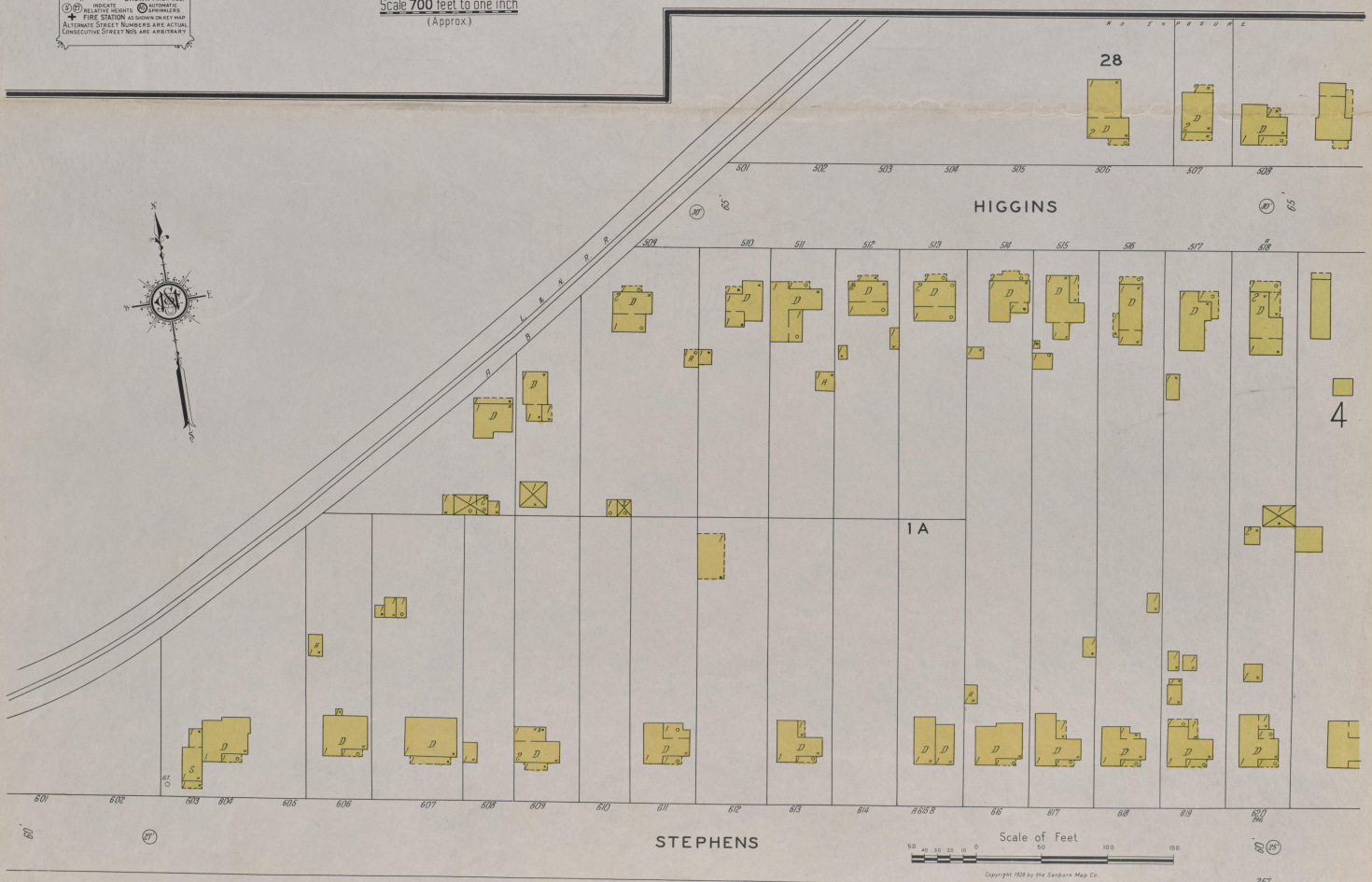
FEB 15 1929
©C.I.F. 47611
WATER FACILITIES:
3 cisterns, owned by City & supplied from Lees Branch by fire pumping apparatus.
FIRE DEPT:
No hydrants. 1st off "pump" & 1st hose - One fire station - Apparatus of Ford truck with hose pump cap. 1500 gal. per min. - 250' 70' hose. 1 hose tank capacity cap. 1200 gal. per min. 1000' 70' hose. 1 50 gal. hose cap. cap. 1000 gal. (trucks) - fully maintained. - 1000' 70' hose & telephone.
83 streets paved - Ground elevations as shown - Public Highways red -
NOTE:
No fire-retardive roofing ordinance.



KEY

- METAL WALL, ASB. ROOF
- METAL CORNER
- FIRE WALL IN ASB. ROOF
- BRICK CORNER
- BRICK PARTITION
- OPENING WITH SHUTTERS
- "STANDARD"
- WINDOW & IRON SHUTTERS
- WINDOW, 1ST STORY
- WINDOW, 2ND STORY
- WINDOW, 3RD STORY
- WINDOW, 4TH STORY
- WINDOW, 5TH STORY
- WINDOW, 6TH STORY
- WINDOW, 7TH STORY
- WINDOW, 8TH STORY
- WINDOW, 9TH STORY
- WINDOW, 10TH STORY
- WINDOW, 11TH STORY
- WINDOW, 12TH STORY
- WINDOW, 13TH STORY
- WINDOW, 14TH STORY
- WINDOW, 15TH STORY
- WINDOW, 16TH STORY
- WINDOW, 17TH STORY
- WINDOW, 18TH STORY
- WINDOW, 19TH STORY
- WINDOW, 20TH STORY
- WINDOW, 21ST STORY
- WINDOW, 22ND STORY
- WINDOW, 23RD STORY
- WINDOW, 24TH STORY
- WINDOW, 25TH STORY
- WINDOW, 26TH STORY
- WINDOW, 27TH STORY
- WINDOW, 28TH STORY
- WINDOW, 29TH STORY
- WINDOW, 30TH STORY
- WINDOW, 31ST STORY
- WINDOW, 32ND STORY
- WINDOW, 33RD STORY
- WINDOW, 34TH STORY
- WINDOW, 35TH STORY
- WINDOW, 36TH STORY
- WINDOW, 37TH STORY
- WINDOW, 38TH STORY
- WINDOW, 39TH STORY
- WINDOW, 40TH STORY
- WINDOW, 41ST STORY
- WINDOW, 42ND STORY
- WINDOW, 43RD STORY
- WINDOW, 44TH STORY
- WINDOW, 45TH STORY
- WINDOW, 46TH STORY
- WINDOW, 47TH STORY
- WINDOW, 48TH STORY
- WINDOW, 49TH STORY
- WINDOW, 50TH STORY
- WINDOW, 51ST STORY
- WINDOW, 52ND STORY
- WINDOW, 53RD STORY
- WINDOW, 54TH STORY
- WINDOW, 55TH STORY
- WINDOW, 56TH STORY
- WINDOW, 57TH STORY
- WINDOW, 58TH STORY
- WINDOW, 59TH STORY
- WINDOW, 60TH STORY
- WINDOW, 61ST STORY
- WINDOW, 62ND STORY
- WINDOW, 63RD STORY
- WINDOW, 64TH STORY
- WINDOW, 65TH STORY
- WINDOW, 66TH STORY
- WINDOW, 67TH STORY
- WINDOW, 68TH STORY
- WINDOW, 69TH STORY
- WINDOW, 70TH STORY
- WINDOW, 71ST STORY
- WINDOW, 72ND STORY
- WINDOW, 73RD STORY
- WINDOW, 74TH STORY
- WINDOW, 75TH STORY
- WINDOW, 76TH STORY
- WINDOW, 77TH STORY
- WINDOW, 78TH STORY
- WINDOW, 79TH STORY
- WINDOW, 80TH STORY
- WINDOW, 81ST STORY
- WINDOW, 82ND STORY
- WINDOW, 83RD STORY
- WINDOW, 84TH STORY
- WINDOW, 85TH STORY
- WINDOW, 86TH STORY
- WINDOW, 87TH STORY
- WINDOW, 88TH STORY
- WINDOW, 89TH STORY
- WINDOW, 90TH STORY
- WINDOW, 91ST STORY
- WINDOW, 92ND STORY
- WINDOW, 93RD STORY
- WINDOW, 94TH STORY
- WINDOW, 95TH STORY
- WINDOW, 96TH STORY
- WINDOW, 97TH STORY
- WINDOW, 98TH STORY
- WINDOW, 99TH STORY
- WINDOW, 100TH STORY

Scale 700 feet to one inch (Approx)

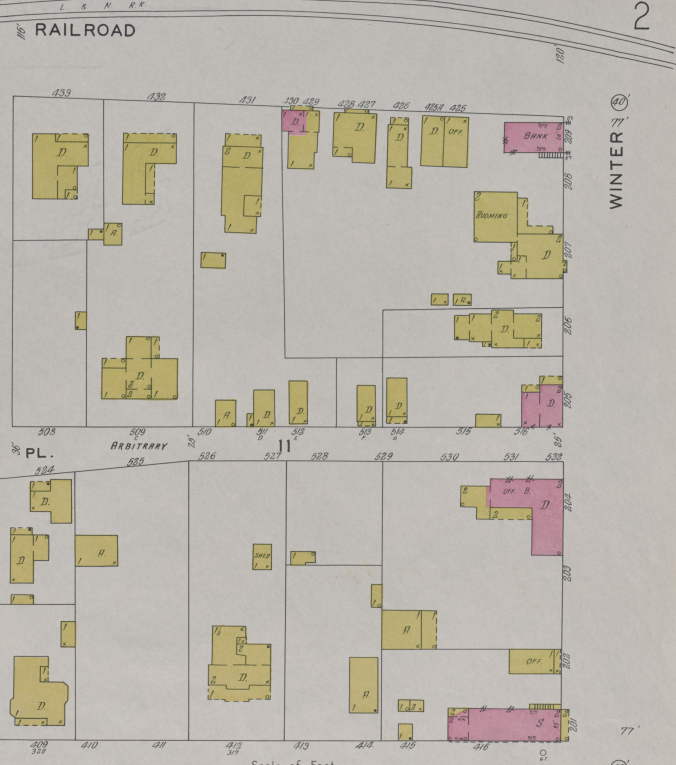
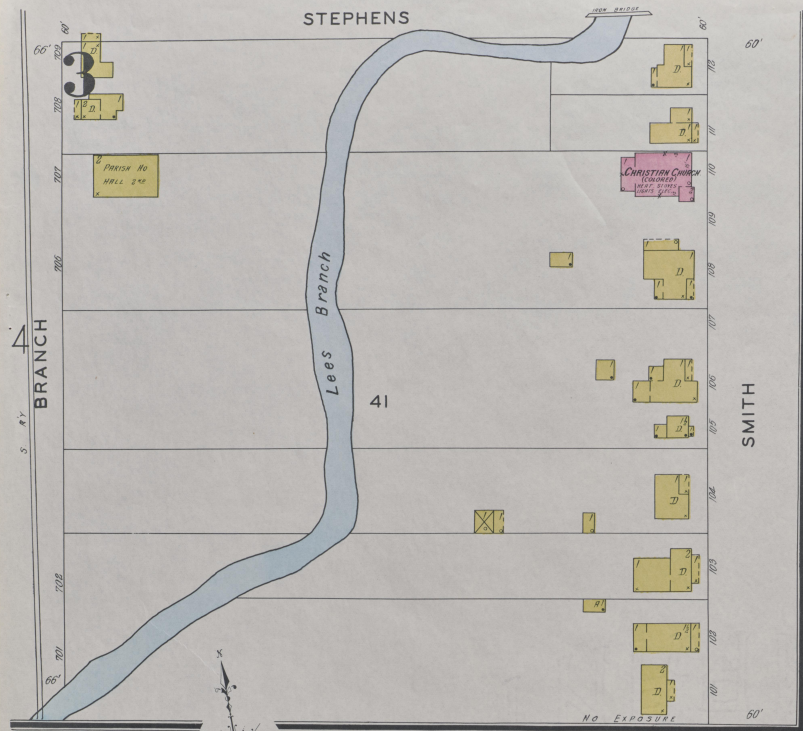




Nov. 1928
MIDWAY
Ky.

3

31



4

Nov. 1928
MIDWAY
KY.

