

Kentucky Alumnus

Volume VII

LEXINGTON, KY., JUNE, 1936

Number 4

Alumni Return to Campus for Reunions

THESE HELPED TO "BRING 'EM BACK"



Here are five of the reunion secretaries whose loyalty and earnest work made the reunion this year so successful. Left to right, above, they are: Ernest L. Becker, class of '11; Hazel Nollau, class of '34; Frances Lee (Mrs. Allan D.) McLean, class of '26; Eileen Lary (Mrs. W. S.) Webb, class of '01; and Robert C. Terrell, class of '06. Other secretaries who were not present when the picture was taken are: Louise Michot (Mrs. E. T.) Proctor, class of '16; James Carnahan and J. Irvine Lyle, class of '96; Willie Victor Cromwell, class of '21; and Buena Mathis, class of '31.

Classes Ending In "2" and "7" Are Scheduled to Return In June, 1937

With a tentative program including special celebrations in connection with the 70th annual Commencement festivities and reunions of classes ending in "2," "7," and the class of '35, alumni can look forward to a great reunion in 1937.

Thursday, June 3, will be Alumni Day, and also on that day annual baccalaureate exercises will be held.

Alumni events will include the class day exercises, reunion luncheons, baccalaureate services, a special tea at Maxwell Place and the alumni banquet in the evening.

Greater plans are being made for the reunions next year. Special attention will be devoted, during the year, to class organization and class

(Continued on Page Eight)

More than 600 strong, University alumni — old-timers, not so old-timers, and many comparatively new-timers—made their way back to the campus June 4 to indulge in gloried reminiscence and shake the hands of friends, old and new, in the most successful alumni reunion in many a year.

Thursday of commencement week was the day, and, in traditional Kentucky fashion, it dawned bright and sunny. Events officially began with registration at 9 o'clock in the Alumni Office. Grady Sellards, Lexington, of the reunion class of '21, was the first to "sign on the dotted line," and was only a few minutes ahead of Howell Spears, class of '07. The Alumni Office lounge was soon filled with returning grads renewing their friendships and connections, and talking over old times.

Annual Class Day exercises, given by the class of '36, were held in Memorial Hall at 10:30 a. m. Elvis J. Stahr, president of the class, was in charge, and a delightful and amusing program was presented.

Noon brought reunion class members together in reunion luncheons. Classes celebrating this year were those ending in '01 and '06 and the class of '34. Attendance at the various luncheons was the largest in many years and secretaries reported "a good time was had by all." Permanent class secretaries and college representatives in each class were elected at the luncheons.

The afternoon program included annual baccalaureate exercises held in Memorial hall at 3 p. m., with Dr. A. W. Fortune, pastor of the Central Christian church in Lexington, delivering the baccalaureate sermon. Following the services, President and Mrs. McVey were hosts at Maxwell Place for a tea in honor of the graduates, alumni and friends.

Over 350 alumni, guests, and friends, an all-time record, packed

(Continued on Page Two)

Official organ of the Alumni Association of the University of Kentucky published quarterly on the campus of the University, at Lexington. Subscription to non-members, \$1.00, to members of the Association, 50 cents. Membership in the Association includes subscription to the Alumnus.

Entered as Second Class Matter at the Postoffice at Lexington, Ky., May 22, 1929, under the Act of March 3, 1879.

Alumni Return to Campus for Reunions

(Continued from Page One)

the Lafayette hotel ballroom for the annual banquet at 7 p. m. to enjoy an interesting and lively program. Lieutenant-Governor Keen Johnson, '22, president of the Association, presided and introduced the toastmaster, Mr. Harvey Babb, '11, president of Morehead State Teachers College. Accompanied by appropriate remarks by Mr. Babb, the program moved along in enjoyable fashion. Greetings were extended by Dr. Frank L. McVey for the University, Professor Merry L. Pence, '81, Professor Emeritus of Physics at the University, representing the oldest of the reunion classes, and Elvis J. Stahr, Rhodes-Scholar-elect, representing the class of '36.

A unique feature of the program was a fantasy dedicated to the reunion classes, entitled "Backward, Turn Backward," presented by University students under the direction of Helen King, '25, of the University Publicity Bureau. A parade of beautiful girls, attired in the fashions of each respective reunion class period, passed across the stage while the University radio orchestra, under the direction of Elmer G. Sulzer, director of radio and publicity at the University, played appropriate music. The orchestra also furnished music

CLASS OF '81



Dr. Merry Lewis Pence, Professor Emeritus of Physics at the University, represented the class of '81, of which he is the only living graduate, this year, and extended greetings from his class at the banquet.

throughout the dinner, presenting special numbers featuring Mary Louise McKenna, soprano, and Gentry Shelton, baritone, in classical and semi-classical selections.

The principal address of the evening was delivered by Hon. A. B. "Happy" Chandler, '23, Governor of Kentucky. Governor Chandler expressed sincere hopes for greater things in the University Alumni Association during the coming years, and pledged his whole-hearted support of all its undertakings. He lauded the graduates of the University who have become leaders in State and Nation, and expressed the hope that University men and women will continue to take the lead in public affairs.

Closing event of the program was announcement of officers of the Association for 1936-37, made by L. K. Frankel, '00, member of the Alumni Executive Committee. Mr. Frankel introduced Keen Johnson, re-elected president, and Miss Helen McCandless, '06, of Louisville, newly-elected vice-president.

Many alumni remained until Friday to attend the commencement program, which included exercises at 10 a. m. in the Alumni gymnasium, with Dr. Thomas Parran, surgeon-general of the United States, delivering the address, and the annual commencement luncheon at noon in the University Commons.

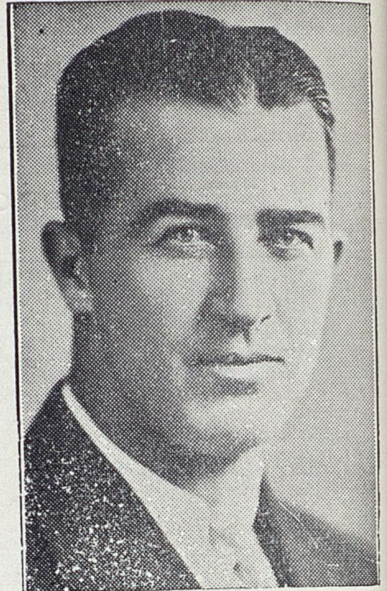
The annual meeting of the Alumni Association was held after the luncheon in the Faculty Club rooms adjoining the Commons. L. K. Frankel, of the Alumni Executive Committee, presided. Reports of the secretary and treasurer were heard and routine business discussed.

Bringing UK to You

A highly successful phase of the Association's program last year was the maintenance of headquarters in cities where the Wildcats played during the football season and at the Southeastern basketball tournament in the spring. Hundreds of alumni who are unable to get to Lexington were contacted and their associations with other alumni and the University renewed.

This plan will be continued during the coming football season. Alumni and former students will have the opportunity of renewing

SPEAKER AT BANQUET



Governor A. B. "Happy" Chandler, '23, above, delivered the principal address at the annual Alumni banquet held June 4 in the Lafayette hotel.

their contacts at Kentucky headquarters to be established at Atlanta, Georgia, for the Georgia-Tech game, New York City for the Manhattan College game, and at Knoxville, for the Tennessee game.

Location of the headquarters will be announced in your weekly Kernel, in daily newspapers, and in letters to alumni living in territories where these games are being played. Make your plans to arrive in town Saturday morning and spend a little time at Kentucky headquarters before going to the game. Representatives of the Association and of the University, officers of local alumni clubs, and of course, other alumni, will be on hand to greet you. In several of the above cities, special events have been planned by the Kentucky alumni club there. Plans are already under way for a big celebration with the New York Alumni Club on November 7, when the Wildcats play Manhattan College.

When you "hit town," look for Kentucky headquarters — we'll be looking for you!

Annual Summer Session Opens With Second Largest Enrollment In Its History

With a total enrollment of 1,654, second largest in its history, representing 116 of Kentucky's 120 counties and thirty-two states, the first term of the University Summer Session started another big year June 15, featuring a well-arranged curriculum of special courses as well as a delightful series of extra-curricular activities.

The enrollment this year fell a little short of equalling the all-time summer school record of 1,716 made last year. This record enrollment, however, was attributed to the necessity for many teachers to fill the new requirements of the standard certificate set up last year. The second term enrollment last year was 1,028 which also was a record number. Officials of the Session estimated that this year's second term enrollment will run in

the same proportion as that of the first period.

Features of the first term included an opening convocation with President Frank L. McVey as speaker, a series of band concerts in the amphitheatre behind Memorial Hall, an All-University Picnic at Lexington reservoir, weekly teas in honor of the various colleges held at Maxwell Place with President and Mrs. McVey as hosts, two performances by the famous Coffey-Miller Players, presenting Shakesperian drama, and a presentation of Gilbert and Sullivan's "Pinafore" by the music department, under the direction of Professor Carl Lampert.

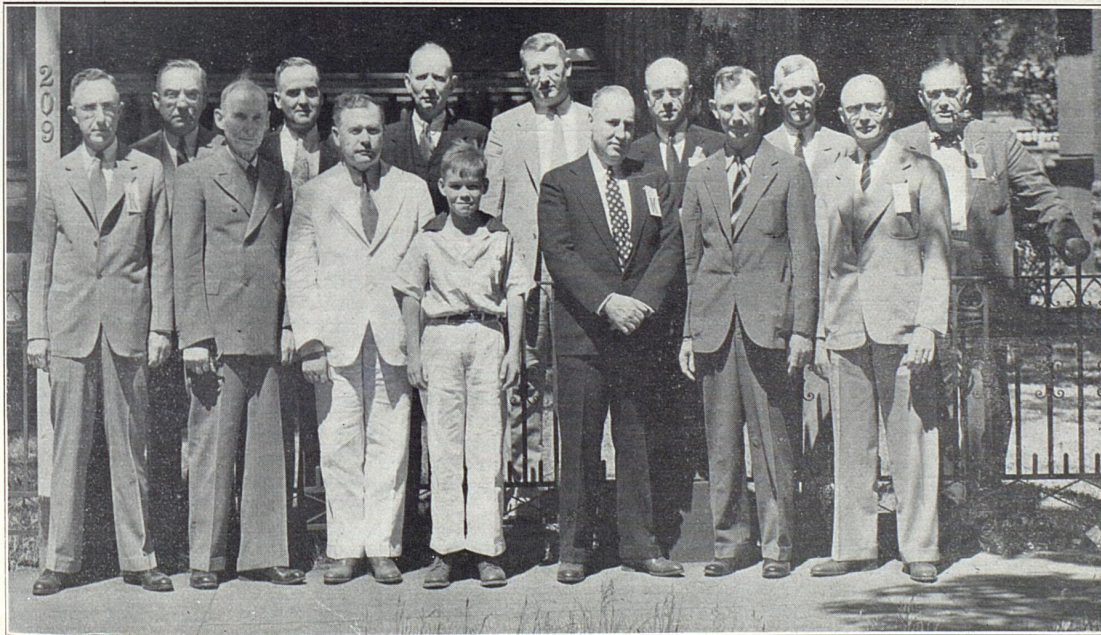
A series of ballroom dancing lessons was also offered by popular request during the term, and two Saturday night dances were held

for the benefit of the socially-minded. For the first time in six years, the Kentucky Kernel was published during the summer, appearing weekly. Campus news, as well as interesting articles, editorials, and feature stories were carried in each issue.

Registration for the second term began June 20. Extra-curricular activities of this term include a series of Little Symphony concerts under the direction of Carl Lampert, a summer school party in Patterson Hall, two performances by the Chamber Opera Company, and a program by Herman Ivarson, Norwegian bass-baritone.

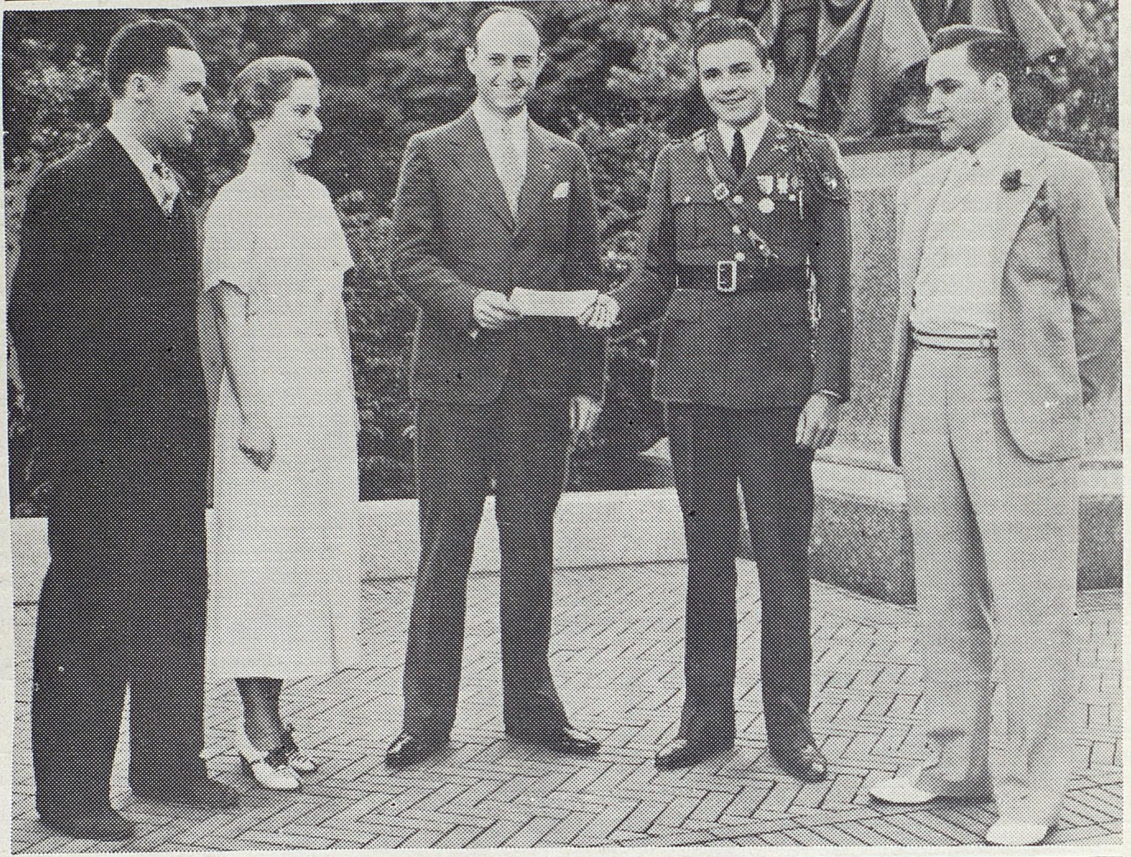
Annual summer school Commencement will begin with the commencement dinner Wednesday, August 19, in the University Commons. The annual reception for graduates will be held Thursday, August 20, and commencement exercises Friday, August 21, in Memorial hall.

THE CLASS OF 1911 — TWENTY-FIVE YEARS AFTER



Above are those who returned this year in the class of '11—the 25-year class—taken after their reunion luncheon at the Teacup Inn. They are, left to right: top row, E. L. Becker, reunion secretary, S. C. Ebbert, L. N. Weller, A. B. Phister, T. S. Slade, G. C. Routt, A. Carlton Ball; front row, F. T. Miles, Dean Emeritus C. R. Melcher, H. G. Lytle, Ebbert, Jr., B. M. Smarr, F. R. Naylor, A. B. Haswell.

GRADUATING CLASS ENROLLS 100 PER CENT AS ASSOCIATION BEGINS NEW YEAR



Lieutenant-Governor Keen Johnson, president of the Alumni Association, is shown above receiving a check for \$400 from Elvis J. Stahr, president of the class of '36, in payment for Association memberships for one year of the 400 graduating members of his class. For the first time in the history of the University the graduating class joined the Association as a unit. Left to right in the picture are: Robert Hensley, treasurer of the class of '36; Frances Kerr, vice-president of the class of '36; Mr. Johnson; Mr. Stahr; and R. K. Salyers, secretary of the Association.

Plans for Current Year Announced

An increase in the number of active members, special attention to revision of alumni records and class reunions, and continuation of the liberal membership plan will be features of the Alumni Association during the current year.

The membership plan, which proved so satisfactory during 1936-37, will remain this year, with dues at \$1.00. Active members will again receive the weekly alumni edition of the Kentucky Kernel during the regular school year. You know the Kernel—one of the outstanding college publications in the nation—full of interesting articles about sports, campus activities and information that keeps you in close touch with all that goes on at the

THE ALUMNI FUND

Alumni dues were reduced to \$1.00 to meet the challenge of depression years and to bring Association membership within the reach of all. Occasionally someone asks, "How can you do it?" To be perfectly frank, it costs the alumni office practically the entire amount received in dues just to pay for sending the Kernel and other communications to active members.

You can help solve this problem by making a contribution to the alumni fund, which is used for the furtherance of general alumni activities and extension of alumni office services. This is entirely voluntarily and has no relation to the regular dues.

University. Each issue sent active members will contain a column devoted exclusively to alumni news.

As was the case last year, the alumni office will devote a great deal of attention to revising alumni records. Keeping up with thousands of former Kentucky students is no easy matter and requires the cooperation of all concerned. By keeping the office informed of your correct address at all times, you can help it to keep in touch with you. As usual, the Association will sponsor various activities in connection with the home-coming game, including the annual home-coming dance in the Alumni gymnasium. Headquarters will be maintained in Lexington hotels for registration of alumni who return for the event.

Alumni who are unable to return for the game at Lexington will have an opportunity to renew con-

(Continued on Page Eight)

Doubling of Membership, Improved Financial Condition Features of 1935-36 Association Year

A membership more than double the 1934-35 total, improved financial condition, headquarters in cities where the Wildcats played, class reunions, and home-coming festivities were features of the past year's work of the Association as set out in the secretary's report approved at the annual meeting June 5.

During the year 1934-35, according to the report, there were 358 active members in the Association, including 56 life members. However, with adoption of a new membership plan at the beginning of the year 1935-36, membership more than doubled, bringing the active number to 808, including the life members, at the end of the past year. Under this plan, dues remained at \$1.00, with all memberships expiring at the close of the Association's fiscal year. Active members were sent weekly, during the regular school year, an issue of the Kentucky Kernel, containing, beside regular campus news and features, a section devoted to news of special alumni interest.

In addition to 31 issues of the Kernel, eight other mailings were sent from the Alumni Office, containing information on football and basketball games, glee club and band concerts, and other items of interest to all alumni. The Alumni Office has tried, at all times, to keep Association members informed of University activities.

In June, 1933, the report states, the Association had a deficit of approximately \$500. By June, 1934, this had been reduced to \$265, and at the close of the fiscal year ending May 31, 1935, the deficit had been reduced still further to \$150.94. The treasurer's report at the close of the fiscal year ending May 31, 1936, shows that this deficit had been wiped out and a cash balance of \$185.68 remained, with all bills paid. In addition, \$100 was transferred during the year to the sustaining fund.

For the first time in the history of the University, the entire 1936 graduating class joined the Association as a unit. Memberships will be paid from the class fund, through an arrangement with the class officers. This brings the Association more members with which to start this year than it had during the entire year of 1934-35.

The report points out, however, that with alumni dues at the low figure of \$1.00, funds received from this source are barely sufficient to

pay for the mailing of the Kernel and other communications to active members. During the past year, the University has furnished the services of the secretary and a full-time stenographer. The office has also had the help of several students working under the National Youth Administration. A fund of \$368.98 was obtained from the class of 1932. Proceeds of two dances given in cooperation with the Lexington Alumni club, netted \$500, and a basketball game, \$49.65.

In order that the Alumni Office

continued during the remainder of the summer.

The Association met with great success in the sponsorship of its various activities during the past year. The annual home-coming day was celebrated November 9 in connection with the Florida-Kentucky game. Alumni headquarters were set up in both down-town hotels, and several hundred alumni registered during the day. The annual home-coming dance was held in the Alumni Gymnasium in the evening. Headquarters were also set up for the Tennessee game on Thanksgiving Day, and another dance was held after that game.

A highly successful, though new, activity of the Association the past year was the maintenance of headquarters, with the secretary in charge, at Columbus, Montgomery, and Birmingham, in connection with football games played in those cities, and at Knoxville during the Southeastern Conference basketball tournament. Many alumni who seldom get to Lexington were contacted and in some cities special programs were put on by local alumni clubs. It is planned to continue these headquarters during the football season this year.

It was not possible this year to arrange for the regular alumni basketball game, but through the cooperation of Coach Adolph Rupp and the athletic department, the Association received the proceeds of the Wildcat-Berea game.

The Association entertained the mid-year graduating class with a dinner in the University Commons January 24, 1936. Judge Brady Stewart, of Paducah, delivered the principal address, and Marcus Redwine, member of the Executive Committee, was toastmaster.

Annual reunions for classes ending in "0" and "5" and the class of '33 were held on May 30, 1935. All reunion classes were well represented and everyone enjoyed the splendid program of activities that had been arranged. Dr. A. M. Peter, member of the University staff for many years, represented the class of 1880 at its 55th reunion. Largest representation among the older classes was the class of '95.

The Executive Committee of the Association was authorized in May, 1935, to recommend to the University Board of Trustees a new plan for selection of members of the board. A plan was presented whereby six qualified alumni would be

(Continued on Page Eight)

WHERE WILDCATS PLAY

- Sept. 19—Maryville at Lexington.
25—Xavier (Night) at Cincinnati.
Oct. 3—V. M. I. at Lexington.
Oct. 10—Georgia Tech at Atlanta.
Oct. 17—W. & L. at Lexington, Virginia.
Oct. 24—Florida at Lexington.
Oct. 31—Alabama at Lexington. (Home-coming)
Nov. 7—Manhattan College at New York City.
Nov. 14—Clemson College at Lexington.
Nov. 26—Tennessee at Knoxville.

A schedule for basketball is not available at this early date as many of the dates are only tentative and many have yet to be filled. However, according to Coach Adolph Rupp, a schedule will be ready for publication in the September issue of the *Alumnus*.

may carry on and extend its activities, it is essential that its income from dues be supplemented from other sources. It is planned, therefore, to give active members an opportunity to assist, in addition to payment of membership dues, through contributions to the alumni fund.

One of the most difficult jobs of an alumni office is the securing of up-to-date addresses of former students. In January, 1936, the Association made application for a project under the National Youth Administration for checking the files and compiling a geographical list. This project was approved and has been under way for several months. It is hoped that this can be con-

YEAR

\$400 from
ting mem-
unit. Left
of '36; Mr.

sent active
column de-
ni news.
year, the
te a great
ising alum-
with thou-
xy students
requires the
erned. By
ned of your
times, you
touch with
ociation will
es in con-
e - coming
annual home-
umni gym-
s will be
n hotels for
who return

le to return
ington will
renew con-
Eight)

❖ ❖ ❖ NEWS OF THE CLASSES ❖ ❖ ❖

'84

C. S. Graves is connected with the Lexington Laundry Company in Lexington, Ky. His home address is 242 Arlington avenue.

* * *

'90

John W. Gunn is a Civil and Mining Engineer, practicing generally in Surveying, Civil and Mining Engineering throughout central and eastern Kentucky. His home address is 353 South Mill street, Lexington.

* * *

'93

J. R. (Dick) Johnson is professor of Applied Mechanics at the University of Kentucky, Lexington. Home address—727 Central avenue, Lexington.

* * *

'94

Pearl Wells teaches in Lexington. Her home address is 727 W. Main street, Lexington.

* * *

'95

Richard C. Stoll practices law in Lexington, with offices in the City Bank Building. Home address—44 W. Third street, Lexington.

'97

Mrs. Martha Blessing is Teacher of Mathematics at Swarthmore College, Swarthmore, Pa.

* * *

'99

C. C. Jett is Professor of Engineering at the University of Kentucky in Lexington. His home address—112 Maxwellton Court, Lexington.

* * *

'00

L. K. Frankel is an architect and engineer with offices in the Citizens Bank Building, Lexington. His home address—419 S. Hanover avenue.

* * *

'01

Frank Milbourn, 830 Mentor avenue, Painesville, Ohio, is president of the Coe Manufacturing Company and the First National Bank in that city. . . . **Frank Daugherty** is Consulting Engineer and president of the Scofield Engineering Company in Philadelphia. His home address is 160 Greenwood avenue, Jenkinstown, Pa. . . . **W. T. Bewlay** is a Chemical Engineer for the Imperial Electric Company, Akron, Ohio. His home address—736 Evergreen Drive, Akron. . . . **Perry West** is a Consulting Engineer in Newark, N. J. His home address—

13 Central avenue, Newark. . . . **Ellein Larry Webb**, "homemaker," lives at 1713 S. Limestone street, Lexington. She was reunion secretary for '01 this year. Her husband, Dr. W. S. Webb, is Professor of Physics at the University. . . . **Mary L. Gordon** is a teacher in the Alabama School for the Deaf in Talladega, Ala. Her summer address is Archer, Fla. . . . **Dr. N. H. Ellis** is full time health officer for Grant county, Ky., with offices in Williamstown. . . . **William James Craig** is Director of Personnel at

WANTED—ALUMNI NEWS!

A department devoted exclusively to news and features of special interest to former students of the University will be a feature of The Kernel issue which is sent weekly to all active members of the Association. The Alumni Office wants news about you both for this column and for the alumni records. If you change your address—take a new job—get married—write a book—receive an honorary or advanced degree—meet a classmate you haven't seen for years—do anything or hear anything of interest—let us know about it. A postcard will do, but we'd rather have a letter at least once a year letting us know where you are and how you are getting along. May we count on your help in this matter?

Western State Teachers College, Bowling Green, Ky.

* * *

'04

W. E. Freeman is head of the Department of Electrical Engineering at the University of Kentucky, Lexington. His home address—1020 Fincastle road.

* * *

'06

Robert C. Terrell, reunion secretary this year for '06, is City Engineer and Superintendent of Water Works in Danville, Ky. Home address—430 Transylvania Park, Lexington. . . . **Thornton Lewis** is vice-president of the Carrier Engineering Corporation, Newark, N. J. Home address—156 Irving avenue, South Orange, N. J. . . . **S. C. Jones** is Field Agent in Agronomy at the University of Kentucky, Lexington.

Home Address—131 Hamilton Park, Lexington. . . . **J. S. McHargue** is Research Chemist at the Kentucky Agricultural Experiment Station in Lexington. Home address—411 Transylvania Park, Lexington. . . . **H. C. Robinson** is a tobacco warehouseman in Lexington and lives on the Paris Pike, Lexington, Route 3.

* * *

'07

Howell D. Spears is Chemist at the Kentucky Agricultural Experiment Station in Lexington. Home address—201 N. Broadway. . . . **C. A. Mahan** is State Agent in Extension Work at the University of Kentucky, Lexington. Home address—1715 Bonair avenue. . . . **Louis E. Hillenmeyer** is manager of Hillenmeyer Nurseries in Lexington. Home Address—Georgetown Pike. . . . **William D. Nicholls** is Professor of Agriculture at the University of Kentucky, Lexington. Home address—126 University avenue. . . . **Viola Lewis Herndon** lives at Irvington, Ky.

'08

R. Miller Holland practices law in Owensboro, Ky. . . . **H. H. Downing** is professor of Astronomy at the University of Kentucky, Lexington. Home address—138 State street. . . . **G. Davis Buckner** is a chemist in the Kentucky Agricultural Experiment Station in Lexington. Home Address—461 N. Limestone street.

* * *

'11

A. B. Haswell is an engineer located in Birmingham, Ala. His home address—Claridge Manor, Birmingham. . . . **Ernest L. Becker** is Vice-President and General Manager of Cincinnati Merchandise Warehouses, Inc., Cincinnati. His home address—1544 Ruth avenue. . . . **S. C. Ebbert** is a member of the firm of Ebbert and Kirkman Company, Birmingham, Ala. Home address—1510 S. 19th street. . . . **A. B. Phister** is a manufacturer in Ft. Thomas, Ky. Home address—115 Tower Place. . . . **B. M. Smarr** is Engineer in the General Motors Parts Corporation. His business address is Chevrolet Motor Company, Detroit, Mich., and his home address is 841 Chicago Blvd., Detroit. . . . **Frank Thorpe Miles** is an industrial engineer in Ft. Thomas, Ky. Home address—17 Holmes avenue. . . . **Theodore Slade** is sales manager for Central Kentucky Natural Gas Company, in Lexington. Home address—116 Rand avenue. . . . **Ben H. Collings** is president of Andrew

Collings Asphalt Company, Colonial Supply Company, and Louisville Sand & Gravel Company in Louisville, engaged in Contracting and Builders' Supplies. Home address—1483 St. James Court.

'14

Edwin Proctor is General Agent for Northwestern Mutual Life Insurance Company, with offices in the Nashville Trust building, Nashville, Tenn. . . . **W. J. Sanford Jr.** is Recreational Supervisor for Pickwick Dam, Tenn. His home address—169 Kentucky avenue, Lexington, Ky.

'15

Ruth Mathews teaches in Henry Clay High School, Lexington, Ky. Home address—660 S. Limestone street. . . . **Harry F. Otto** is Engineer for the Department of Water and Power, City of Los Angeles, California. Home address—732 N. Harvard Blvd., Los Angeles. . . . **Wayland Rhoads** is Extension Agent for Kentucky Agricultural Experiment Station in Lexington. Home address—1435 S. Limestone street. . . . **Robert D. Hawkins** is Professor of Hydraulic Engineering at the University of Kentucky, Lexington. Home address—816 Tremont avenue.

'16

E. A. Blackburn is a partner in Cox and Blackburn, wholesale distributors of Frigidaire products in Houston, Texas. Home address—3315 Delmonte avenue, Houston. . . . **William C. Johnstone** is McCracken County Farm Agent with offices in Paducah, Ky. Home address—1417 Jefferson street. . . . **N. Minton Gregor** is treasurer of Vegex, Incorporated, 122 Hudson street, New York City. Home address—300 W. 23rd street. . . . **E. Harold Clark** is Manufacturer's Agent, selling heating equipment and automatic controls for heating and refrigerating equipment in Detroit, Mich. Home address—2539 Lakewood, Detroit. . . . **Bessie Fogle Judd**, "homemaker," lives in Mansfield, La. After graduation she taught for fourteen years in Louisiana, Mississippi, and North Carolina, and has done further work in Peabody, Duke University, University of Vermont, and University of Colorado. . . . **Everett Smith Penick** practices law in Elkton, Ky. Home address—306 Main street. . . . **James Franklin Corn** is City Judge and practices law in Cleveland, Tenn., with offices in the Merchants Bank Building. Home address—1702 Ocoee street. . . . **C. C. Wilson** is Attorney and Referee in Bankruptcy in Hazard, Ky. . . . **Glover Birk** is Manufacturing Chemist and president of Birk Manufacturing Company, makers of Betty Lees

Shoe Creams and Ohio Valley Brand Chemicals, New Albany, Ind. His business address is Monon and Lincoln avenues, New Albany. . . . **L. M. Amburgy** is County Agricultural Agent at Athens, Tenn. . . . **Herbert L. Felix** is superintendent of Franklinton Schools, Franklinton, La. . . . **Pearl Bastin Herring** lists herself as "housewife" and her home address as 625 E. Main street, Lexington, Ky. . . . **A. D. Galantz** is a Clothier in Maysville, Ky. . . . **Mrs. Marie Michot Proctor**, reunion secretary this year for '16, lives at "Winfield," Belle Meade Park, Nashville, Tenn. . . . **R. M. Heath** is County Agent of Franklin County, Ky., with headquarters in Frankfort.

* * *

'17

Mrs. Russell A. Hunt, "homemaker," lists her home address as 460 Park avenue, Lexington, Ky.

* * *

'18

Charles L. Morgan is Head of the Poultry Division of the A. & M. College of South Carolina at Clemson, S. C.

* * *

'19

Margaret H. Tuttle is Departmental Librarian at the University of Kentucky, Lexington. Home address—125 E. Maxwell street. . . . **Eliza Piggott (Mrs. Thomas R.) Underwood**, member of the Alumni Executive Committee, lives at 223 Woods Point Road, Lexington, Ky.

* * *

'21

Grady Sellards, first one to register on Alumni Day this year, is Field Agent in Animal Husbandry at the University in Lexington. Home address—423 Park avenue.

* * *

'22

Keen Johnson, president of the Alumni Association, is Lieutenant-Governor of Kentucky and publisher of the Richmond Daily Register at Richmond, Ky.

* * *

'23

Anna B. Sprague teaches lip-reading in Lexington, Ky. Her home address is 1600 Richmond Road. She recently visited her brother, John S. Sprague, '31, who received his M. D. degree at Johns Hopkins University in Baltimore, Md., this June. . . . **C. O. Mock** is instructor in Engineering Drawing at the University in Lexington. Home address—165 Preston avenue. . . . **Sarah Gibson Blanding** is Dean of Women and Assistant Professor of Political Science at the University in Lexington. Home address—R. F. D. No. 5, Lexington. . . . **Graham McCormick** manages McCormick Lumber Company in Lexington. Home address—108 Irvine Road.

'24

Lucy Gardner is Secretary to the Dean, College of Education, University of Kentucky, Lexington. Home address—Winchester, Ky. . . . **Margaret M. Reynolds** is Professor in Adult Education in Lexington. Home address—132 E. Third street.

* * *

'25

Russell A. Hunt is Agronomist at the Kentucky Agricultural Experiment Station in Lexington. Home address—460 Park avenue.

* * *

'26

Frances Lee McLean lives at 350 Aylesford Place, Lexington, Ky. She was reunion secretary this year for '26. . . . **Henry B. Moore** is Assistant Chief of Marketing, Research Division, U. S. Department of Commerce, Bureau of Foreign and Domestic Commerce. His home address—Beverly Hills, Alexandria, Va. . . . **H. H. Grooms** practices law in Birmingham, Ala., and is a member of the law firm of Coleman, Spain, Stewart, and Davies. Home address—2537 15th Avenue, South. . . . **Franklin P. Guerin** is a teacher in the high school at Tulsa, Okla. Home address—309 E. 8th street. . . . **William Ashbrook** is Extension Professor at Kent University, Kent, Ohio. Home address—325 High street, Kent. . . . **Isadore Goldben** is Agent for the Metropolitan Life Insurance Company in Cairo, Ill. Home address—517 25th street. . . . **Ernestine Cross** teaches school at Simpsonville, Ky. She may be reached at Route No. 2, Shelbyville, Ky. . . . **Mrs. Flora Bryant Mackey** is a "housewife" in Williamsburg, Ky. . . . **Ottie B. Travis** is County Agricultural Agent with offices in Jamestown, Ky. . . . **J. B. Johnson** practices law in Williamsburg, Ky. . . . **W. Emmet Milward** is manager of the Milward Mortuary in Lexington, Ky. Home address—463 W. Third street. . . . **James McMahan** is Superintendent of Trimble County Schools with offices in Bedford, Ky. . . . **John L. Crawford** is an Editor and Publisher in Corbin, Ky., and is president of the Kentucky Press Association. . . . **T. R. Davies** is a Physician and Surgeon in Barbourville, Ky. . . . **J. W. Prewitt** superintends the Williamsburg, Ohio, schools. . . . **Georgia Thornton Brown** teaches in Independence, Kans. Home address—912 Main street. . . . **James O. Boswell** is an Insurance Agent in Owensboro, Ky. . . . **Henry Randolph Brown** is Assistant Secretary-Treasurer of the Uvalde Rock Asphalt Company, San Antonio, Texas. Home address—P. O. Box No. 1158. . . . **James Witt**, teacher at Glencoe, Ky., says "have never been in jail, the 'bug-house,' or on relief. Have made many friends and

a few enemies." His home address is 1281 Bassett avenue, Louisville, Ky. . . . **George Phillips Young** is Secretary - Treasurer and Sales Manager of the Corvallis Lumber Company, Corvallis, Ore., and lives at 120 N. 14th street in Corvallis. . . . **J. Ernest Threlkeld** teaches in Madisonville, Ky. . . . **John Estill Reeves** is a teacher in Manumit School, Pawling, N. Y. . . . **Thomas Oliver** is Engineer for the West Virginia Pulp and Paper Company in Luke, Md. His home address—Box No. 2. . . . **E. M. Nichols** is "just a hard-working country lawyer" in Madisonville, Ky. . . . **Georgia M. Rouse** is teaching in Somerset, Ky. . . . **Margaret Wooton Higgins** teaches fifth grade in Hazard, Ky. schools, and her husband, **James T. Higgins**, '16, is director of the CCC camp at Pikeville, Ky. . . . **Susie Clay** is Principal of Clay's Cross-Roads School near Paris, Ky. Home address—R. F. D. No. 6. . . . **Elizabeth Miller (Mrs. E. C. Tarpley)** is a "housekeeper" at 5700 Wilkins avenue, Pittsburgh, Pa. . . . **Kenneth H. Tuggle** is president of the Union National Bank, Barbourville, Ky. . . . **Hughes M. Hamilton** is Farmer and Dairyman and lives on the Yarnalton Pike, Lexington Ky.

Plans for Current Year Announced

(Continued from Page Four)

tacts with the University through headquarters to be maintained in New York, Atlanta, and Knoxville, in connection with the games with Manhattan, Georgia - Tech, and Tennessee.

Special attention will be devoted to class organization and class reunions during the year. Plans are already underway for the reunions to be held next June for classes ending in "2," "7," and the class of '35. Plans for class organization in connection with these reunions contemplates appointment of a class secretary where there is no record of a permanent secretary, and in addition, selection of a representative for each college having graduates in the class. If you don't hear from your secretary in the near future, write the alumni office and ask about plans being made for your class reunion.

Every day the alumni office handles requests for addresses of alumni, information about football and basketball games and other University matters. It is ready to serve in every possible way. Help it to serve you by giving it information about where you are and what you are doing.

Doubling of Membership, Better Financial Condition Features of Association Year

(Continued from Page Five)

nominated and become the candidates for membership on the board. These names were to be placed in alphabetical order on a ballot, together with three blank spaces, and the ballots sent to those alumni qualified to vote. Names of the three persons receiving the highest number of votes would then be submitted to the Governor and he would appoint one in accordance with the law. This plan was put into effect, resulting in the

largest number of ballots from alumni ever received. Mr. Louis Hillenmeyer, Lexington, was appointed as alumni member of the board for a six-year term.

Keen Johnson, lieutenant-governor of Kentucky, and president of the Association for the past year, was re-elected for the year 1936-37. Miss Helen McCandless, Louisville, was elected vice-president, and Senator Ray Moss and Dr. E. Cronley Elliott were elected members of the Executive Committee for three-year terms.

Classes of "2," "7" To Return In 1937

(Continued from Page One)

reunions. Plans already underway include appointments of a class secretary where there is no record of a permanent secretary, and in addition, selection of a representative for each college having graduates in the class.

The Commencement program next year will mark the twentieth year

of the presidency of Doctor McVey, and special plans are being made to celebrate his administration. Of course, speakers for the various events have not yet been scheduled, but the tentative dates have been set. Alumni will be informed through the Kernel when permanent plans have been completed.

Seventieth Commencement exercises will be held on Friday, June 4, followed by the annual luncheon in the University Commons. The annual meeting of the Alumni Association will be held following this luncheon.

ALUMNI ASSOCIATION—UNIVERSITY OF KENTUCKY Financial Report, 1935-36

Balance on hand July 1, 1935		\$ 204.04
Bills outstanding June 1, 1935:		
*Salary	\$ 21.90	
*Phoenix Hotel for annual Banquet	201.85	
*University of Kentucky	75.50	
*Student Loan Fund	25.98	
*Kentucky Kernel	24.75	
*American Surety Company	5.00	
	354.98	354.98
Deficit June 1, 1935		\$ 150.94
Income 1935-36		
Dues for 1935-36	640.00	
Class of 1932	368.98	
Homecoming Dance	500.00	
Basketball Game	49.65	
Miscellaneous Income	61.60	
Total Receipts	\$ 1,620.23	1,824.27
Expenditures 1935-36		
Kentucky Kernel—mailing Kernel to active members	444.50	
Kentucky Kernel—Printing (*24.75 of this for 1934-35)	142.15	
Salaries for part-time work in Alumni Office (*21.90 of this for 1934-35)	206.26	
Postage and Office Supplies	242.97	
Telephone and Telegraph	27.73	
*Banquet,*May, 1935	201.85	
Florist	20.44	
Surety Bonds (*5.00 of this from 1934-35)	12.50	
Cuts and Photographs	2.80	
Student Loan Fund (*due from Loyalty Fund)	25.98	
*University of Kentucky (due from memberships during 1934-35)	75.50	
Expense of headquarters at Birmingham, Columbus, Montgomery, and Knoxville	95.75	
Expense of Secretary at American Alumni Council Convention	23.20	
Total Expenditures	\$ 1,538.59	
Transferred to Sustaining Fund	100.00	
Total	\$ 1,638.59	1,638.59
Balance on Hand		\$ 185.68