

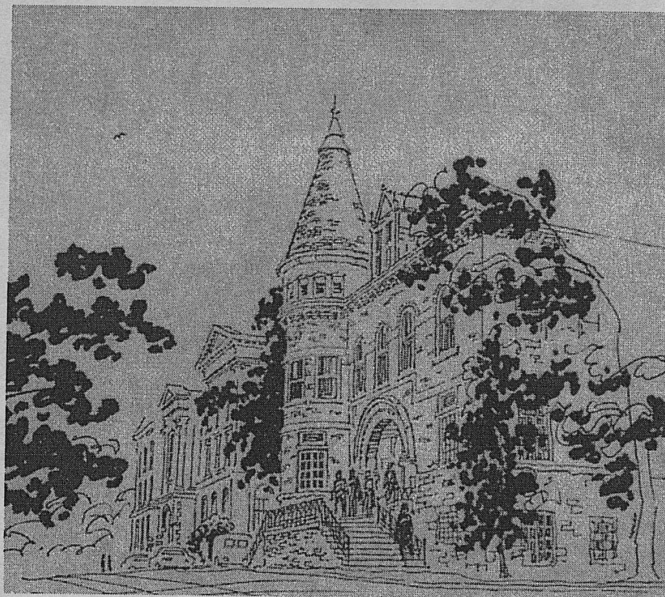
UNIVERSITY OF KENTUCKY



THE GRADUATE SCHOOL BULLETIN

PART 2 - PROGRAMS, CERTIFICATES AND COURSES

JANUARY 2009



THE GRADUATE SCHOOL
THE GILLIS BUILDING

The Graduate Bulletin lists Official Guidelines for all Graduate Matters.

The Graduate School
The Gillis Building
University of Kentucky
Lexington, KY 40506-0033
<http://www.gradschool.uky.edu>

To sign up for Graduate Record Exam: Educational Testing Service
<http://www.ets.org/>

To apply for admission:
<http://www.uky.edu/FineArts/Music>

<http://www.gradschool.uky.edu/gsapplcation.html>

Minimum admission score for Test of English as a Foreign Language (TOEFL)--
550 (or 213 computer version, or 79 internet-based test)
www.toefl.org

Current graduate students should visit the School of Music web site for internal
procedures:
<http://www.uky.edu/FineArts/Music/DGS>

MUSIC

The School of Music offers the Master of Arts (M.A.) with specialty areas or emphases in musicology or theory; Master of Music (M.M.) with specialty areas in performance (including choral or instrumental conducting), composition, sacred music, or music education; Doctor of Musical Arts (D.M.A.) with specialty areas in performance (including choral or instrumental conducting), or composition; and the Doctor of Philosophy (Ph.D.) with specialty areas in musicology, music education or theory. The applicant for the master's degree is expected to have earned an appropriate undergraduate degree, and the applicant for the doctoral degree is expected to have earned an appropriate master's degree or equivalent.

Graduate work is also provided for persons seeking Rank I and Rank II state certification in music education. Requirements for Rank II coincide with those for the M.M. in Music Education; requirements for Rank I may be completed by a planned and approved 30 semester hour program in addition to Rank II requirements or 60 semester hours of planned and approved graduate credit, including the master's degree. The URL for the School of Music Home Page is www.uky.edu/FineArts/Music.

Entrance Requirements

Applicants must meet the entrance requirements of The Graduate School as well as those of the School of Music. Applicants to all graduate programs in music are required to take entrance exams in the areas of music theory (aural and written) and music history and literature. Applicants to programs in music education and voice, as well as doctoral study in musicology,

are also required to take an additional exam in the proposed area. Those seeking a degree in performance must audition as well. Applicants can send a video/DVD of a recent concert for preliminary audition. Live auditions should be scheduled by contacting the faculty member in charge of the student's performing area, or filling out an audition request form on the School of Music web page. The purpose of these exams and the audition is to discern the applicant's readiness to pursue graduate work in music. Students who have graduated from or are currently enrolled as undergraduate students at the University of Kentucky are not exempt from these entrance requirements. Applicants must demonstrate a minimum level of skills and knowledge on the entrance exams in order to be accepted into the program. For students who are accepted, the exams indicate whether they need review classes in specific areas before entering into graduate-level course work, but a willingness to take review classes is not a substitute for satisfactory performance on the exams. All applicants should take the exams seriously and attempt to do their best work. Admission of students who need review classes will be admitted conditionally until these requirements have been completed, which should be before the student has completed 12 graduate credit hours, or registration for additional classes may be blocked. Entrance examinations are usually scheduled on 4 dates per year at the School of Music: the 2nd Saturday in November, the first Saturday in February, the 1st Saturday in March, and the 3rd Saturday in June. *The applicant should notify the Music Graduate Office of his/her intention to take the entrance exams and confirm the date at least four weeks prior to the exam.* There is no charge to take the exams on the scheduled dates. Students who cannot arrange to take the exams on one of these dates may hire a private proctor to give them the exams at a mutually convenient time.

Note: Persons not applying for financial assistance may choose any of the above dates. Persons who meet the GPA and GRE score requirements for Non-Service Fellowships and wish to be considered for these awards **must** take the examinations (and the audition if applicable) no later than the first Saturday in February. Those applying for teaching assistantships may choose to take the examinations in November or February for application for the subsequent fall semester. Those wishing to begin studies during a summer session must take the examinations no later than the first Saturday of March. Applicants should complete the application online at the Graduate School homepage prior to doing the audition and entrance exams.

GENERAL REQUIREMENTS FOR MASTER'S DEGREE

Foreign Language Requirement: The Master of Arts degree requires a reading knowledge of one foreign language, preferably French or German. Voice Performance majors in the Masters of Music are expected to have taken at least one year each of undergraduate level German, French, and Italian (or the equivalent by petition to the Director of Graduate Studies in the School of Music) as a prerequisite for degree study. If deficient, a student must enroll in language courses each semester of study until the deficiency is removed. Language classes must be passed with a letter grade of B or above.

Thesis Requirement: The Master of Arts degree requires a thesis (Plan A: see general requirements). For the Master of Music degree in Performance, a public recital acceptable to the faculty is required in lieu of a thesis. For the Master of Music degree in Composition, a composition of major proportions, acceptable to the composition-theory faculty and publicly performed, must be submitted in lieu of a written thesis. For the Master of Music in Music Education, students may choose the thesis option (Plan A), or the non-thesis option which requires taking six hours of additional course work instead (Plan B).

A final **comprehensive examination** is required for each program. At least fifty percent of all course credits must be at the 600 level or above.

MASTER OF ARTS

Prerequisites: A suitable background in music literature and music theory, and a reading knowledge of one foreign language, normally French or German.

MASTER OF ARTS (Musicology Emphasis)

Music History and Literature	(9-12)
Theory (including MUS 670, 671, 672, or 676)	(6-9)
Research Methods (MUS 618)	(3)
Directed Electives	(0-6)
Thesis	(6)
Total	(30)

MASTER OF ARTS (Theory Emphasis)

Theory (including MUS 670, 671, 672, or 676)	(9-12)
Music History and Literature	(6-9)
Research Methods (MUS 618)	(3)
Directed Electives	(0-6)
Thesis	(6)
Total	(30)

MASTER OF MUSIC (Composition)

Prerequisites: Submission of three original compositions.

Advanced Composition (MUS 673)	(4)
Orchestration (MUS 570 and 571)	(4)
Music History and Literature	(6)
Theory (including a minimum of one course from: MUS 670, 671, 672, or 676)	(9)
Directed Electives	(1)
Thesis Composition	(6)

Total (30)

The thesis composition must be publicly performed. The student is responsible for the preparation of legible score and parts.

MASTER OF MUSIC (Performance)

Prerequisites: Acceptance by the appropriate faculty of applied music.

Music Performance (including recital)	(9)
Music History and Literature	(6)
Theory (including MUS 670, 671, 672, or 676)	(6)
Directed Electives	(9)
Recital	(0)
Total	(30)

A minimum of three full semesters, excluding summer sessions, is necessary for an M.M. in Performance.

This MM degree program is offered in the following specialty areas: piano, piano with emphasis in instrumental or vocal accompanying (see below), voice (see below), organ, violin, viola, cello, bass, guitar, flute, oboe, clarinet, saxophone, bassoon, trumpet, horn, trombone, euphonium, tuba, percussion and conducting (choral or instrumental). Wind, string, percussion, and conducting majors must participate in at least one University-sponsored performing organization for two semesters.

MASTER OF MUSIC (Piano Performance: Instrumental Accompanying)

Piano Performance (MUP 601, including recital)	(9)
Music History and Literature (at 600 level, including MUS 624)	(9)
Theory (including MUS 670, 671, 672, or 676)	(6)
Advanced Chamber Ensemble (MUC 570)	(4)
Electives (MUP 503 or MUP 520 recommended)	(2)
Total	(30)

MASTER OF MUSIC (Piano Performance: Vocal Accompanying)

Piano Performance (MUP 601, including recital)	(9)
Music History and Literature (at 600 level, including MUS 520)	(9)
Theory (including MUS 670, 671, 672, or 676)	(6)
Vocal Coaching for Singers (MUP 530 and MUP 630)	(4)
Electives (MUP 503 or MUP 520 recommended)	(2)
Total	(30)

MASTER OF MUSIC (Voice Performance)

Voice Performance (including recital)	(9)
Music History and Literature (must include MUS 623 or 627)	(6)
Theory (including MUS 670, 671, 672, or 676)	(6)
Physiology and Functioning of the Singing Voice (MUS 665)	(3)
Materials, Techniques, and Literature of Voice Teaching (MUS 667)	(3)
Advanced Vocal Repertory (MUS 620)	(3)
Total	(30)

A minimum of three full semesters, excluding summer sessions, is necessary for an M.M. in Performance.

MASTER OF MUSIC (Sacred Music)

UK Requirements:	(27)
MUS 660 Choral Methods	(3)
Music History and Literature	(3)
Music Theory (including MUS 578, 670, 671, 672, or 676)	(3)
Ensemble	(2)
Music Education	(3)
(Choose from MUS 560, MUS 561, MUS 650 or other graduate music education course in consultation with advisor)	
Internship	(3)
Specialized area of study	(10)
Course work at an accredited seminary or other institution specializing in religious studies	(6-9)
(Choose from topics such as Music in Worship, Designing Worship, Congregation, Worship and Spirituality, Worship and Music in the Liturgical Year, or other courses. Credits must be completed with a grade "B" or above and must be transferred to UK officially prior to graduation)	
Total	(33)
Specialized areas of study:	
VOICE or KEYBOARD (organ or piano)	
MUP 558 Choral Conducting	(4)
Music Performance (Voice or Keyboard)	(6 **)
CHORAL CONDUCTING	
MUP 558 & 658 Choral Conducting	(8)
Keyboard, MUP 501 or 503	(2)

+ An audition in the performing area (voice, organ, or piano) is required.

* A 15-minute jury before either the voice faculty (for vocal emphasis) or the keyboard faculty (for piano or organ emphasis) is required at the end of the applied study.

MASTER OF MUSIC (Music Education - Plan A)

Core Requirements:	(12)
MUS 600 Research I	(3)
MUS 601 Foundations of Music Education	(3)
Music History and Literature	(3)
Music Theory (including MUS 578, MUS 670, MUS 671, or MUS 672)	(3)
Thesis	(6)
Music Education Electives	(6)
The student can select any Music Education courses 500 level or above.	
Music Electives	(6)
The student can select any Music course 500 level or above in Performance, Music History, Music Theory, or Composition.	
Total	(30)

Students planning to earn a doctorate in Music Education should elect Plan A.

(Students planning to obtain a Rank II certification should contact the Chair of Music Teacher Education Program (TEP) to get informed about the latest Rank II requirements.)

MASTER OF MUSIC (Music Education - Plan B)

Core Requirements:	(12)
MUS 600 Research I	(3)
MUS 601 Foundations of Music Education	(3)
Music History and Literature	(3)
Music Theory (including MUS 578, 670, 671, 672, or 676)	(3)
Specialized Area of Study	(12)
(The student will select 12 hours from the five areas described below, Instrumental Teaching, Choral Teaching, General Music, Orff Methods, and Choral or Instrumental Conducting. The student and advisor will determine the general area of emphasis and plan a set of courses which best fulfills the needs of the student).	
Music or Education Electives	(6)
(The student can select any music or education courses 500 level or above.)	
Total	(30)

(Students planning to obtain a Rank II certification should contact the Chair of Music Teacher Education Program (TEP) to get informed about the latest Rank II requirements.)

Specialized areas of study for Plan B

INSTRUMENTAL TEACHING EMPHASIS - Band or Orchestra (Student and Advisor choose twelve hours from courses below which would best fulfill the student's needs.)

MUP Applied Performance (maximum of 4 hours)	(1-4)
MUP Secondary Applied	(1-2)
MUS 680 Band History and Literature	(3)
MUS 622 Symphonic Literature	(3)
MUS 660 Adv. Methods: Elementary General Music	(3)
MUP 558 Conducting or MUP 658 Conducting	(1-4)
MUS 684 Advanced String Methods and Materials	(3)
MUS 570 Orchestration	(2)
MUS 706 Music Learning and Behavior	(3)

CHORAL TEACHING EMPHASIS (Student and Advisor choose twelve hours from courses below which would best fulfill the student's needs.)

MUP Applied Performance (Maximum of 4 hours)	(1-4)
MUS 660 Adv. Methods: Elementary General Music	(3)
MUS 650 Music Education Workshop	(1-3)
MUS 660 Adv. Methods: Choral Techniques	(3)
MUP 558 Conducting or MUP 658 Conducting	(1-4)
MUS 706 Music Learning and Behavior	(3)

GENERAL MUSIC TEACHING EMPHASIS - Elementary Music, Jr. High, Middle School General Music (Student and Advisor choose twelve hours from courses below which would best fulfill the student's needs.)

MUP Applied Performance (maximum of 4 hours)	(1-4)
MUS 660 Adv. Methods: Elementary General Music	(3)
MUS 560 Orff Schulwerk Workshop	(1-3)
MUS 561 Orff Schulwerk Certification	(2-6)
MUS 650 Music Education Workshop	(1-3)
MUS 766 Seminar in Music Education	(3)
MUS 664 Music and Special Learners	(3)
MUS 706 Music Learning and Behavior	(3)

GENERAL MUSIC TEACHING EMPHASIS - Orff Schulwerk Concentration
This program follows all current requirements leading to the Master of Music Degree specializing in General Music with an Orff Schulwerk emphasis. Students must complete at least nine hours of coursework including MUS 560 Orff Schulwerk and MUS 561 Orff Schulwerk Certification Levels One and Two within the 12-hour general music specialization.

These courses are normally offered only in the summer as part of the Orff Teacher Training Courses. Students desiring to write a master's thesis may do so by choosing a topic related to Orff Schulwerk for the thesis and completing six hours of Orff Schulwerk and achieving Level Two Orff Certification.

This MM degree with Concentration in Orff Schulwerk is part of the Academic Common Market program recognized in the state of West Virginia. Residents of West Virginia can pay Kentucky in-state tuition by submitting an application to their State Academic Common Market Coordinator for approval.

CONDUCTING EMPHASIS - Instrumental or Choral (Student and advisor choose twelve hours from courses below which would best fulfill the student's needs.)

MUP Applied Performance (maximum of 4 hours)	(1-4)
MUP Secondary Applied Performance	(1-2)
MUS 680 Band History and Literature	(3)
MUS 622 Symphonic Literature	(3)
MUS 681 Advanced Rehearsal Techniques - Band	(3)
MUP 558 Conducting or MUP 658 Conducting (4 hours required)	(1-4)
MUS 660 Adv. Methods: Choral Techniques	(3)
MUS 570 Orchestration or MUS 571 Orchestration	(2)
MUS 684 Adv. String Methods & Materials	(3)
MUS 706 Music Learning and Behavior	(3)

DOCTOR OF MUSICAL ARTS

The Doctor of Musical Arts program offers opportunity for fullest development as a performer, composer, or teacher of music performance or composition. Technical excellence is a prerequisite for admission into the program; doctoral study emphasizes work in adjunct areas of music, related fields, and research as they enhance and support the major area. Language requirement differs among performance areas. If required and if deficient, a student must enroll in language courses each semester of study until the deficiency is removed. Language classes must be passed with a grade of B or higher.

Recital requirement differs among performance areas. At least three weeks prior to each recital, the student must do a pre-recital hearing for three members of the applied faculty who must sign and submit a Pre-Recital Hearing Form to be placed in the student's file. The program content of the recitals will be established in cooperation with the student's Advisory Committee. Immediately after each successful recital, a Recital Approval form must be signed by three members of the Advisory Committee and placed in the student's file. The student should complete at least one recital prior to taking the Qualifying Exam.

If the Major Professor of a student in a performance program is an Associate Member of the Graduate Faculty, he/she can serve as co-chair and another member of the Advisory Committee, who is a Full Member of the Graduate Faculty, shall serve as chair. If the major professor of a student in a performance program is not a member of the Graduate Faculty, a Full Member of the Graduate Faculty shall serve as chair and major academic professor; the performance teacher shall serve as an additional, non-voting member of the committee.

DMA students are required to pass a Qualifying Exam (QE) upon completion of all coursework. Part I of the QE (History and Theory, 3 hours each) will be given as a common exam early every semester. Students should Part I prior to taking Part II of the QE which is the Specialty Area portion (six hours) of the QE. Part III of the QE is the oral exam (2 hours maximum) and should be taken last.

Dissertation requirement differs among the performance areas. The Project for the D.M.A. specializing in Composition will consist of two parts. Part 1 is a large-scale original composition. The candidate is responsible for arranging a public performance of the work. Part 2 is an in-depth analysis and discussion of the composition. The composition and in-depth written analysis and discussion are to be approved by the Advisory Committee in the same manner as a Ph.D. dissertation.

DOCTOR OF MUSICAL ARTS

The minimum course requirements beyond the master's degree are as follows:

MUS 618 Research Methods*	(3)
Music History and Literature	(9)
Advanced Music Theory**	(6)
Performance Major	(12)
Minor (optional)***	(9)
Total	(30-39)

DOCTOR OF MUSICAL ARTS (Voice Performance)

Research Methods (MUS 618)*	(3)
Music History and Literature (must include MUS 623 or 627*)	(6)
Advanced Music Theory**	(6)
Voice Performance	(12)
Performance Related Study: must include MUS 665*, 667*, and 620* and 6 credits of Directed Research in Vocal Literature (MUS 780)	(6-15)
Minor (Optional)***	(9)
Total	(33-51)

DOCTOR OF MUSICAL ARTS (Choral Conducting)

Research Methods (MUS 618)*	(3)
Music History and Literature (must include MUS 625)	(9)
Advanced Music Theory**	(6)
Advanced Choral Methods (MUS 660)	(3)
Performance Major****	(12)
Minor (Optional)***	(9)
Total	(33-42)

DOCTOR OF MUSICAL ARTS (Instrumental Conducting)

Research Methods (MUS 618)*	(3)
Music History and Literature (must include MUS 622 or MUS 680)	(9)
Advanced Music Theory**	(6)
Advanced Rehearsal Techniques (MUS 681)	(3)
Performance Major (6 hours of MUP 658 and 6 hours of MUP 758)	(12)
Minor (Optional)***	
Total	(33-42)

*If not completed at the master's level.

**MUS 578 cannot be used to fulfill this requirement.

***The minor may be taken within or outside the School of Music, and is subject to the approval of the Advisory Committee and the chairman of the department concerned.

****Must include a minimum of 4 credits of MUP 758

DOCTOR OF PHILOSOPHY

The School of Music offers courses and research opportunities leading to the Ph.D. Applicants must meet the entrance requirements of The Graduate School as well as those of the School of Music. Applicants must submit a master's thesis or a research paper of sufficient scope and quality to demonstrate competence in research and clarity of expression. The basic core requirements beyond the master's degree are as follows:

Research Methods: MUS 618 (if not taken at the master's level)	(3)
Music History and Literature beyond the master's	(9)
Advanced Music Theory beyond the master's*	(6)
Three seminars (minimum) beyond the master's	
Total	(27)

(24 hours if competency in Research Methods is accepted by the Musicology faculty.)

*MUS 578 cannot be used to fulfill this requirement.

There is no specific requirement in a minor area, but such work may be required by a student's Advisory Committee if it is essential to the major research or field of concentration.

Satisfaction of **language requirements** will conform to The Graduate School policy; however, specific languages required will vary with individual options. The foreign language requirement(s), if applicable, must be met by the end of the first full year of study in the Ph.D. program. The student's Advisory Committee must be formed and appointed by the Dean of the Graduate School prior to advance registration for the student's third semester. The dissertation topic and prospectus must be approved by the Advisory Committee; the dissertation itself must be the result of original research which adds to or modifies what has previously been known on the subject. Qualifying examinations should be taken no later than one semester after the completion of course work. A student is admitted to candidacy for the Ph.D. degree only after meeting the language requirement(s) and passing the qualifying examinations.

The Ph.D. in music may be pursued in one of three areas: music education, music theory, or musicology. The program outline for each area beyond the core requirements is given below; the student's Advisory Committee advises on and plans the actual program of study.

MUSIC EDUCATION

Music in Higher Education (MUS 762)

Psychology of Music (MUS 770)

At least one graduate level course in statistics

Knowledge of acoustics (PHY 140 or equivalent); Knowledge of specialized research in music education (MUS 600 or equivalent). These requirements must be met by the end of the first year of doctoral study.

A foreign language is not required but student must show competency in computer use and statistical understanding for research purposes.

Additional courses in music education or adjunct subjects as recommended by the Advisory Committee.

MUSIC THEORY

Pedagogy of Theory (MUS 674)

Advanced Analytical Techniques (MUS 676)

History of Music Theory (MUS 678)

Additional courses in music theory or adjunct subjects as recommended by the Advisory Committee

A reading knowledge of French, German, or a language appropriate to the research interest

MUSICOLOGY

Medieval and Renaissance Notation (MUS 700)

Proseminar in Musicological Methods (MUS 703)

Additional courses in musicology or adjunct subjects as recommended by the Advisory Committee

A reading knowledge of at least two foreign languages, normally German and either French or Italian

GRADUATE CERTIFICATE IN MUSIC THEORY PEDAGOGY

The School of Music offers course work leading to the Certificate in Music Theory Pedagogy. The Certificate requires a total of 15 hours consisting of the following courses:

MUS 674 Theory Pedagogy	(3)
MUS 675 Internship	(3)
MUS 676 Advanced Analytic Techniques	(3)
<i>and two elective theory courses selected from the following:</i>	
MUS 572 Counterpoint	(3)
MUS 573 Counterpoint	(3)
MUS 670 Musical Style I	(3)
MUS 671 Musical Style II	(3)
MUS 672 Musical Style III	(3)
MUS 677 Contemporary Music Idioms	(3)
MUS 678 History of Theory	(3)
MUS 772 Seminar in Theory	(3)
MUS 799 Independent Work in Music Theory	(1-3)

The Certificate will be awarded upon completion of the requirements. Students working on the Certificate are expected to earn a grade of B or higher in each certificate requirement.

GRADUATE CERTIFICATE IN ORFF SCHULWERK

The School of Music offers course work leading to the Certificate in Orff Schulwerk. The Certificate requires a total of 12 hours consisting of the following courses:

MUS 561 Orff Schulwerk Certification I	(2-4)
MUS 561 Orff Schulwerk Certification II	(2-4)
MUS 561 Orff Schulwerk Certification III (2-4) or MUS 560 Orff Schulwerk	(1-3)
MUS 750 Independent Project	(1-3)

The content for MUS 750 and MUS 560 must be pre-approved by the UK Director of Orff Schulwerk.

DISMISSAL POLICY

After admission into a music graduate program, a student will be dismissed for any one of the following conditions:

- Review courses not completed (with passing grade at B or higher) by the end of first year of study
- Two "C's" or lower in grade report for courses in the degree program
- Failure to pass full faculty-jury twice

MUSIC COURSES

All music performance courses (MUP) may be repeated for credit as needed. Music ensemble courses (MUC) may be repeated indefinitely.

All music performance courses carry from one to four credits, though three credits is the norm for performance majors, during the fall and spring semesters. (Applied music offerings during the summer are limited. Two credits is the maximum allowed, and one credit is the norm.)

GRADUATE COURSES

MUC 570	ADVANCED CHAMBER MUSIC ENSEMBLE	(1)
MUC 596	OPERA WORKSHOP	(1-3)
MUC 675	JAZZ ENSEMBLE	(1)
MUC 689	WIND ENSEMBLE	(1)
MUC 691	ORCHESTRA	(1)
MUC 692	UNIVERSITY CHORISTERS	(1)
MUP 501	PIANO	(1-4)
MUP 502	VOICE	(1-4)
MUP 503	ORGAN	(1-4)
MUP 504	VIOLIN	(1-4)
MUP 505	VIOLA	(1-4)
MUP 506	CELLO	(1-4)
MUP 507	STRING BASS	(1-4)
MUP 508	FLUTE	(1-4)
MUP 509	OBOE	(1-4)
MUP 510	CLARINET	(1-4)
MUP 511	BASSOON	(1-4)
MUP 512	TRUMPET	(1-4)
MUP 513	FRENCH HORN	(1-4)
MUP 514	TROMBONE	(1-4)
MUP 515	EUPHONIUM	(1-4)
MUP 516	TUBA	(1-4)
MUP 517	SAXOPHONE	(1-4)
MUP 518	PERCUSSION	(1-4)

MUP 520	HARPSICHORD	(1-4)
MUP 521	ENGLISH HORN	(1-4)
MUP 523	CLASSICAL GUITAR	(1-4)
MUP 530	VOCAL COACHING FOR SINGERS	(1-3)
MUP 558	CONDUCTING	(1-4)
MUP 601	PIANO	(1-4)
MUP 602	VOICE	(1-4)
MUP 603	ORGAN	(1-4)
MUP 604	VIOLIN	(1-4)
MUP 605	VIOLA	(1-4)
MUP 606	CELLO	(1-4)
MUP 607	STRING BASS	(1-4)
MUP 608	FLUTE	(1-4)
MUP 609	OBOE	(1-4)
MUP 610	CLARINET	(1-4)
MUP 611	BASSOON	(1-4)
MUP 612	TRUMPET	(1-4)
MUP 613	FRENCH HORN	(1-4)
MUP 614	TROMBONE	(1-4)
MUP 615	EUPHONIUM	(1-4)
MUP 616	TUBA	(1-4)
MUP 617	SAXOPHONE	(1-4)
MUP 618	PERCUSSION	(1-4)
MUP 620	HARPSICHORD	(1-4)
MUP 623	CLASSICAL GUITAR	(1-4)
MUP 630	VOCAL COACHING FOR SINGERS	(1-3)
MUP 658	CONDUCTING	(1-4)
MUP 701	PIANO	(1-4)
MUP 702	VOICE	(1-4)
MUP 703	ORGAN	(1-4)
MUP 704	VIOLIN	(1-4)
MUP 705	VIOLA	(1-4)
MUP 706	CELLO	(1-4)
MUP 708	FLUTE	(1-4)
MUP 709	OBOE	(1-4)
MUP 710	CLARINET	(1-4)
MUP 711	BASSOON	(1-4)
MUP 712	TRUMPET	(1-4)
MUP 713	FRENCH HORN	(1-4)
MUP 714	TROMBONE 0	(1-4)
MUP 716	TUBA	(1-4)
MUP 717	SAXOPHONE	(1-4)
MUP 718	PERCUSSION	(1-4)
MUP 730	VOCAL COACHING FOR SINGERS	(1-3)
MUP 758	CONDUCTING	(1-4)
MUS 400G	MUSIC HISTORY REVIEW	(3)
MUS 470G	REVIEW OF HARMONY	(1)
MUS 471G	REVIEW OF AURAL SKILLS	(1)

MUS 500	MUSIC OF THE MIDDLE AGES	(3)
MUS 501	MUSIC OF THE RENAISSANCE	(3)
MUS 502	MUSIC OF THE BAROQUE ERA	(3)
MUS 503	MUSIC OF THE CLASSIC PERIOD	(3)
MUS 504	MUSIC OF THE NINETEENTH CENTURY	(3)
MUS 505	MUSIC OF THE TWENTIETH CENTURY	(3)
MUS 506	HISTORY OF AMERICAN MUSIC	(3)
MUS 520	VOCAL SOLO LITERATURE	(3)
MUS 521	ORGAN LITERATURE	(3)
MUS 522	PIANO LITERATURE TO 1830	(3)
MUS 523	PIANO LITERATURE SINCE 1830	(3)
MUS 540	APPLICATIONS OF MUSIC TECHNOLOGY	(3)
MUS 550	TOPICS IN MUSIC EDUCATION (SUBTITLE REQUIRED)	(1-3)
MUS 560	ORFF SCHULWERK	(1-3)
MUS 561	ORFF CERTIFICATION: LEVEL I, II, OR III	(2)
MUS 566	PIANO PEDAGOGY	(3)
MUS 570	ORCHESTRATION	(2)
MUS 571	ORCHESTRATION	(2)
MUS 572	COUNTERPOINT	(3)
MUS 573	COUNTERPOINT	(3)
MUS 574	COMPOSITION	(2)
MUS 575	COMPOSITION	(2)
MUS 578	ANALYSIS AND STYLE SURVEY	(3)
MUS 600	RESEARCH I	(3)
MUS 601	FOUNDATIONS IN MUSIC EDUCATION	(3)
MUS 618	RESEARCH METHODS	(3)
MUS 620	ADVANCED VOCAL REPERTORY (SUBTITLE REQUIRED)	(3)
MUS 622	SYMPHONIC LITERATURE	(3)
MUS 623	OPERA LITERATURE I	(3)
MUS 624	CHAMBER MUSIC LITERATURE	(3)
MUS 625	CHORAL LITERATURE	(3)
MUS 627	OPERA LITERATURE II	(3)
MUS 650	MUSIC EDUCATION WORKSHOP	(1-4)
MUS 660	ADVANCED MUSIC EDUCATION METHODS AND MATERIALS (SUBTITLE REQUIRED)	(3)
MUS 664	MUSIC AND SPECIAL LEARNERS	(3)
MUS 665	PHYSIOLOGY AND FUNCTIONING OF THE SINGING VOICE	(3)
MUS 667	MATERIALS, TECHNIQUES AND LITERATURE OF VOICE TEACHING	(3)
MUS 670	MUSICAL STYLE I	(3)
MUS 671	MUSICAL STYLE II	(3)
MUS 672	MUSICAL STYLE III (3)	(3)
MUS 673	ADVANCED COMPOSITION	(2)
MUS 674	PEDAGOGY OF THEORY	(3)
MUS 675	INTERNSHIP IN THEORY PEDAGOGY	(1)
MUS 676	ADVANCED ANALYTICAL TECHNIQUES	(3)
MUS 677	CONTEMPORARY MUSIC IDIOMS	(3)

MUS 678	HISTORY OF THEORY	(3)
MUS 680	BAND HISTORY AND LITERATURE	(3)
MUS 684	ADVANCED STRING METHODS AND MATERIALS	(3)
MUS 690	TOPICS IN MUSICOLOGY (SUBTITLE REQUIRED)	(3)
MUS 694	INTERNSHIP IN SACRED MUSIC	(1)
MUS 695	INDEPENDENT WORK IN MUSIC	(1-3)
MUS 700	MEDIEVAL AND RENAISSANCE NOTATION	(3)
MUS 702	SEMINAR IN MUSICOLOGY	(3)
MUS 703	PROSEMINAR IN MUSICOLOGICAL METHODS	(3)
MUS 704	MUSIC TECHNOLOGIES	(3)
MUS 705	RESEARCH II	(3)
MUS 706	MUSIC LEARNING AND BEHAVIOR	(3)
MUS 707	TESTS AND MEASUREMENTS IN MUSIC	(3)
MUS 719	INDEPENDENT WORK IN MUSICOLOGY	(1-3)
MUS 748	MASTER'S THESIS RESEARCH	(0)
MUS 749	DISSERTATION RESEARCH	(0)
MUS 750	INDEPENDENT WORK IN MUSIC EDUCATION	(1-3)
MUS 762	MUSIC IN HIGHER EDUCATION	(3)
MUS 766	SEMINAR IN MUSIC EDUCATION	(3)
MUS 767	DISSERTATION RESIDENCY CREDIT	(2)
MUS 768	RESIDENCE CREDIT FOR THE MASTER'S DEGREE	(1-6)
MUS 769	RESIDENCE CREDIT FOR DOCTOR'S DEGREE	(1-12)
MUS 770	PSYCHOLOGY OF MUSIC	(3)
MUS 772	SEMINAR IN THEORY	(3)
MUS 780	DIRECTED RESEARCH IN VOCAL LITERATURE	(1-3)
MUS 799	INDEPENDENT WORK IN MUSIC THEORY	(1-3)

DMA Minimum-Requirements Chart (January 2009)

Specialty Areas		Language*	Recitals*	Monograph Project*	Advisory Committee
Composition		One language other than English	Public performance of project composition	Large-scale composition and in-depth analysis	Five members
Choral Conducting		One language other than English	2 conducting recitals (Accumulation of 2 semesters with UK choirs + Full recital with outside choir or UK choir) + 1 lecture-demonstration	75-page minimum	Four members
Wind Band Conducting		One language other than English	2 conducting recitals, with pre-approved ensembles at or outside UK + 1 lecture demonstration	75-page minimum	Five members
Orchestral Conducting	Option 1	One language other than English	2 conducting recitals with pre-approved orchestra at/outside UK + 1 lecture demonstration	75-page minimum	Four members
	Option 2		3 conducting recitals with pre-approved orchestras at/outside UK + 1 lecture demonstration	25-page minimum	Four members
Brass	Option 1	One language other than English	2 solo recitals + 1 lecture recital of 60 minutes	75-page minimum	Four members
	Option 2		4 solo recitals (or 3 solo + chamber ensemble; or 2 solo + chamber ensemble + concerto)	25-page minimum	
Organ	Option 1	French or German	2 recitals, repertoire pre-approved + 1 lecture recital	75-page minimum	Four members
	Option 2		4 recitals (1 may include instrumental or choral ensemble + 1 lecture recital)	25-page minimum	
Percussion	Option 1	None	2 recitals with pre-approved repertoire and ensemble type + 1 lecture recital	75-page minimum	Four members
	Option 2		4 recitals with pre-approved repertoire and ensemble type + 1 lecture recital	25-page minimum	
Piano	Option 1	None	2 recitals of 60 minutes of music each & from memory + 1 lecture recital	75-page minimum	Four members
	Option 2		4 recitals of 50-60 minutes of music each & from memory (1 can be chamber recital and/or concerto with orchestra) + 1 lecture recital	25-page minimum	

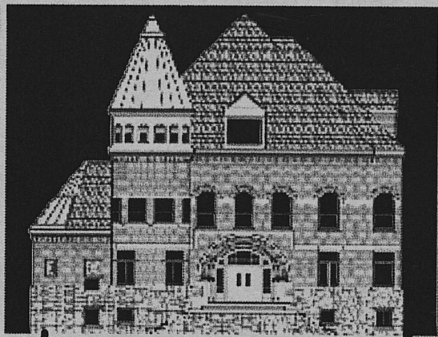
DMA Minimum-Requirements Chart (January 2009) cont.

String	Option 1	One language other than English	2 recitals with pre-approved repertoire and ensemble type + 1 lecture recital	75-page minimum	Four members
	Option 2		4 recitals with pre-approved repertoire and ensemble type + 1 lecture recital	25-page minimum	
Voice	Option 1	3 languages: French, German, and Italian	2 recitals with pre-approved repertoire (opera role may not be used) + 1 lecture recital	75-page minimum	Four members
	Option 2		4 recitals with pre-approved repertoire (1 may be opera role; 1 maybe chamber recital) + 1 lecture recital	25-page minimum	
Woodwind	Option 1	None	2 recitals with pre-approved repertoire and ensemble type + 1 lecture recital	75-page minimum	Four members
	Option 2		4 recitals with pre-approved repertoire and ensemble type + 1 lecture recital	25-page minimum	

- ***All content of requirements must be pre-approved by the student's Advisory Committee.**
- **Each recital is 50-minute of music in length.**
- **Lecture Recital/Demonstration should include 50% performance and 50% lecture.**
- **The Project Document length pertains to the main text only.**
- **Students who choose an optional minor in Music Theory, Musicology, or Music Education must select Performance Option 1 and add a member from the minor area to the DMA Committee.**

The Graduate School

101 GILLIS BUILDING, LEXINGTON, KY 40506 (859) 257-4613

Prospective Graduate Students		Search this Site
New Graduate Students		FAQs
* Current Graduate Students		For DGSs
Admission		Graduate School Directory
Tuition and Fees		Directors of Graduate Studies
Health Insurance Coverage		Graduate Faculty Directory *
Fellowships, Assistantships, and Support Funding		Important Dates *
Graduate Centers and Schools		Graduate School News
* Graduate School Bulletin *		Graduate Council
Graduate Student Resources		Graduate Programs and Certificates
Support Services	Schedule of Classes	Graduate School Survey
Office of the Registrar	Academic Calendar *	
Update Your Address	Preparation of Theses and Dissertations	Contact Us
Scheduled Dissertation Defenses	Giving to UK Online	

Commencement 2009 Graduate Student Interdisciplinary Conference

<u>Graduate Student Events</u>	<u>GradShare</u>	* <u>Graduate School Forms</u> *
<u>TA Resources</u>	<u>Honorary Degrees</u>	<u>Graduate School Reports</u>
<u>International TA Language Screening</u>	<u>For College Deans</u>	<u>Graduate School Strategic Plan</u>
<u>Preparing Future Faculty</u>	<u>For GS Staff</u>	<u>Benchmark Institutions</u>
<u>Request More Information</u>	<u>Log in to Grad seeblue page</u>	<u>UK Graduate Student Listserv</u>
<u>Questions?</u>		